



Pioneer Energy Services

Microresistivity Log

15-195-22,841-00-00

API No.

Company Palomino Petroleum, Inc.

Well Permelia No. 1

Field Revilo

County Trego

State

Kansas

Location

SW SW NE NE
1,200' FNL & 1,054' FEL

Other Services
RAG

Sec: 18

Twp: 15S

Rge: 25W

Elevation

K.B. 2394

D.F. 2389

G.L. 2389

Permanent Datum Ground Level

Log Measured From Kelly Bushing

Drilling Measured From Kelly Bushing

5 Ft. Above Perm. Datum

Date 12/13/2012

Run Number Two

Depth Driller 4420

Depth Logger 4417

Bottom Logged Interval 4416

Top Log Interval 3500

Casing Driller 8.625 @ 217

Casing Logger 217

Bit Size 7.875

Type Fluid in Hole Chemical

Salinity, ppm CL 3000

Density / Viscosity 9.4 48

pH / Fluid Loss 10.0 70

Source of Sample Flowline

Rm @ Meas. Temp .55 @ 67

Rmf @ Meas. Temp .41 @ 67

Rmc @ Meas. Temp .74 @ 67

Source of Rmf / Rmc Charts

Rm @ BHT .31 @ 120

Operating Rig Time 4 Hours

Max Rec. Temp. F 120

Equipment Number 108

Location Hays

Recorded By J. Long

Witnessed By John Goldsmith

<<< Fold Here >>>

All interpretations are opinions based on inferences from electrical or other measurements and we cannot and do not guarantee the accuracy or correctness of any interpretation, and we shall not, except in the case of gross or willful negligence on our part, be liable or responsible for any loss, costs, damages, or expenses incurred or sustained by anyone resulting from any interpretation made by any of our officers, agents or employees. These interpretations are also subject to our general terms and conditions set out in our current Price Schedule.

Comments

Thank you for using Pioneer Energy Services
www.pioneerres.com
785 625 3858

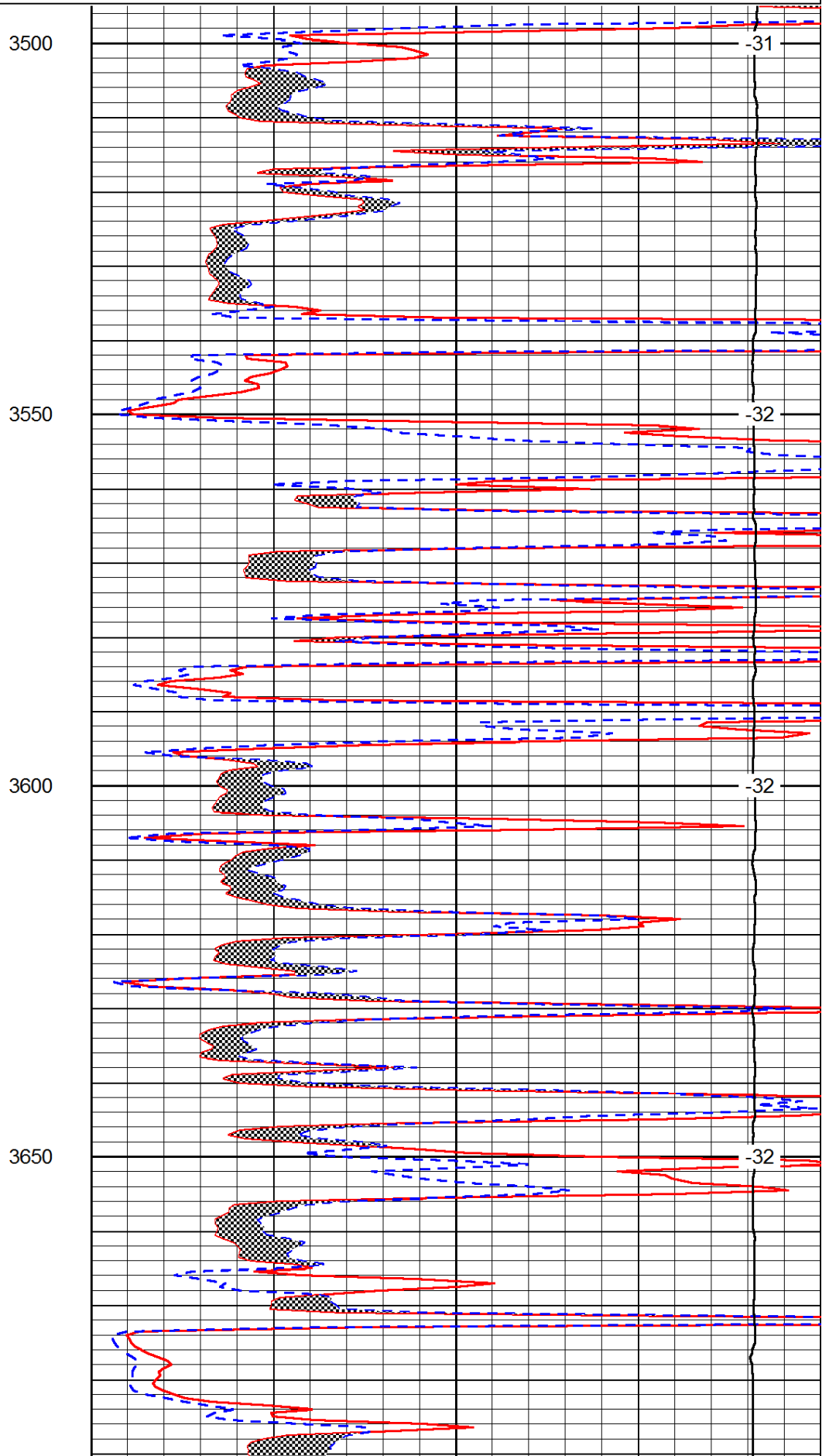
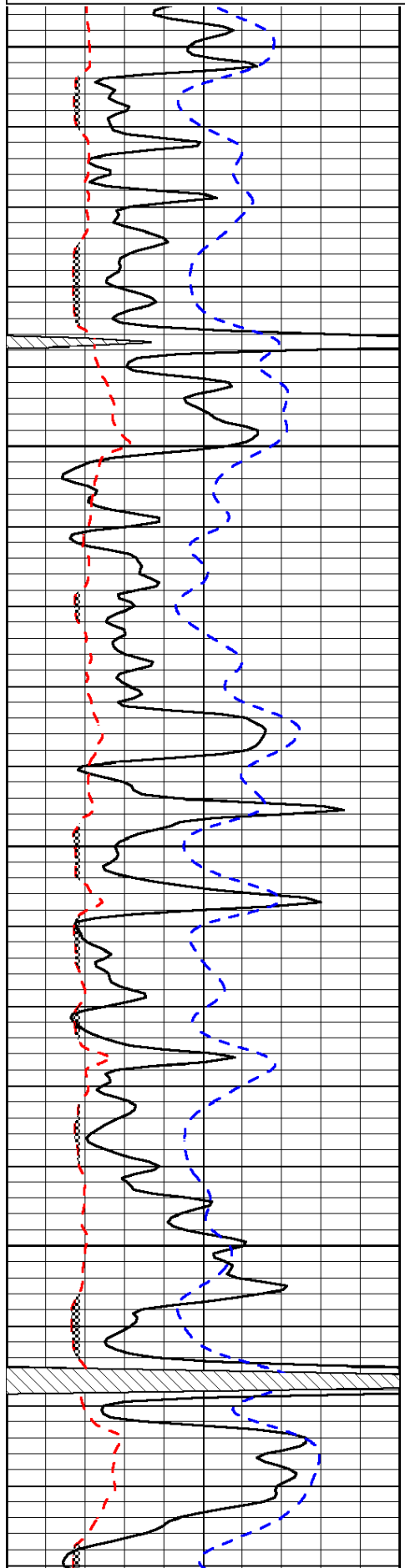
Utica, 1 East to E Road, 4 North to County Line, 4 North at jog in road, 3/4 East, South Into

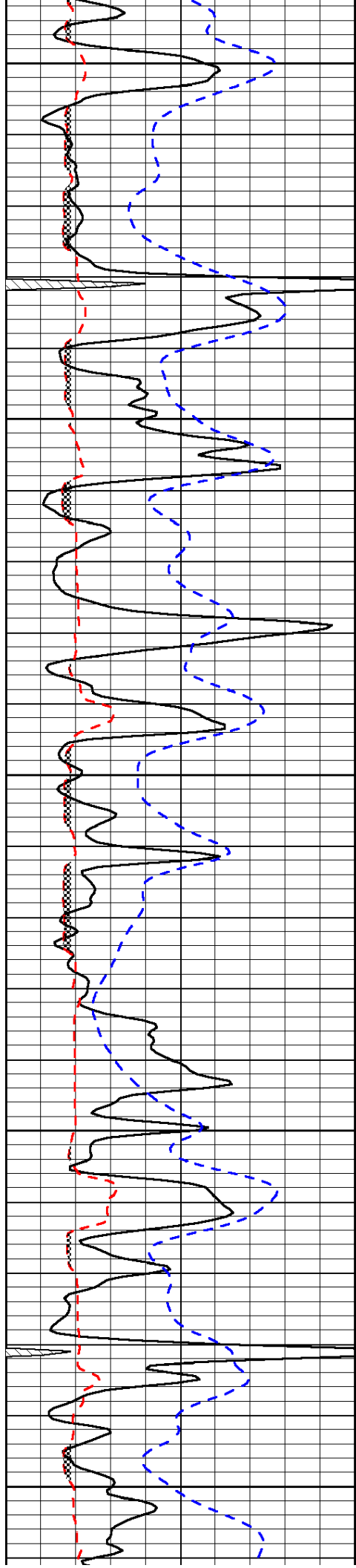
Database File: c:\warrior\data\palomino_permelia #1\palomino_permelia_1hd.db
Dataset Pathname: rag/palorag
Presentation Format: micro
Dataset Creation: Thu Dec 13 11:06:50 2012
Charted by: Depth in Feet scaled 1:240

0	Gamma Ray	150
6	Micro Log Caliper (GAPI)	16
-200	SP (mV)	0

0	Micro Inverse 1 X 1	40
0	Micro Normal 2"	40
15000	Line Weight	0

LSPD





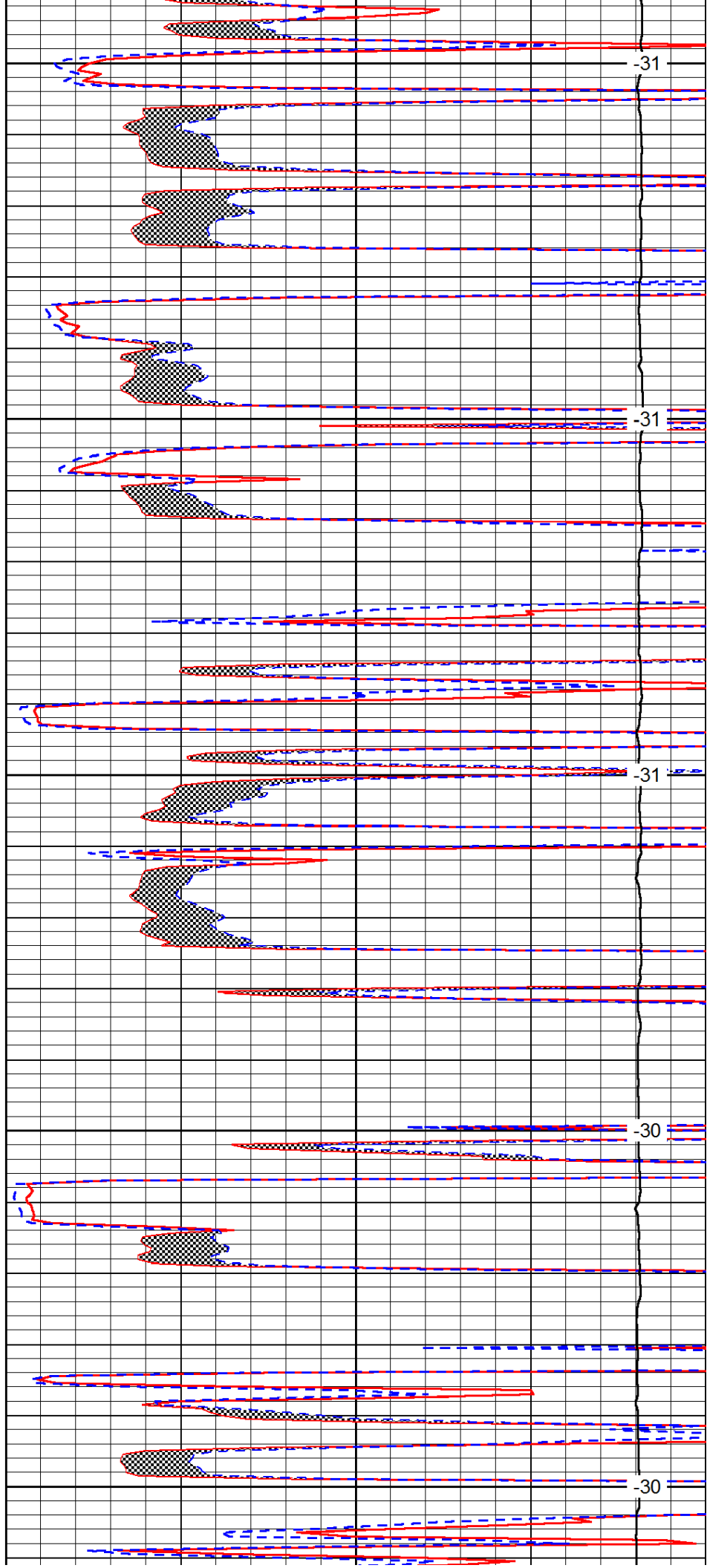
3700

3750

3800

3850

3900



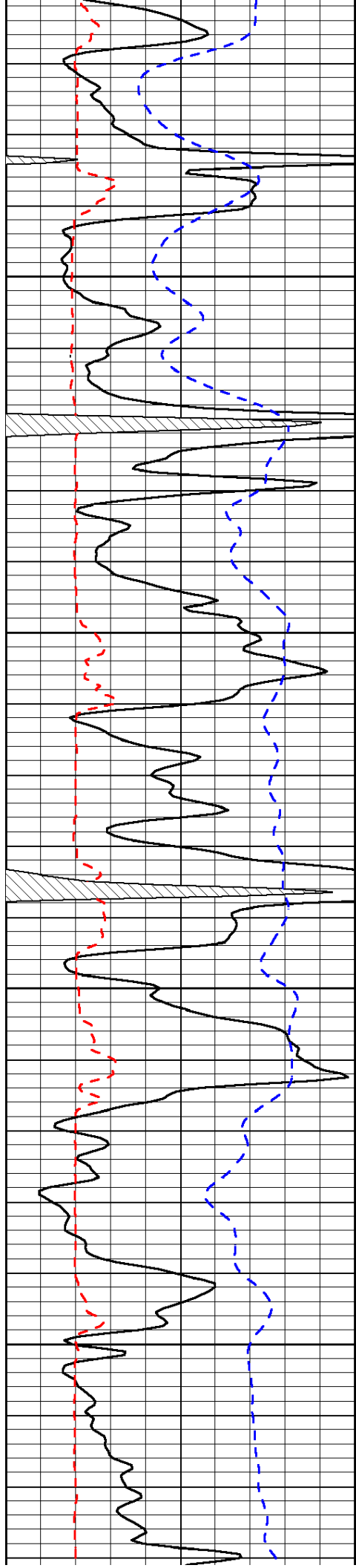
-31

-31

-31

-30

-30

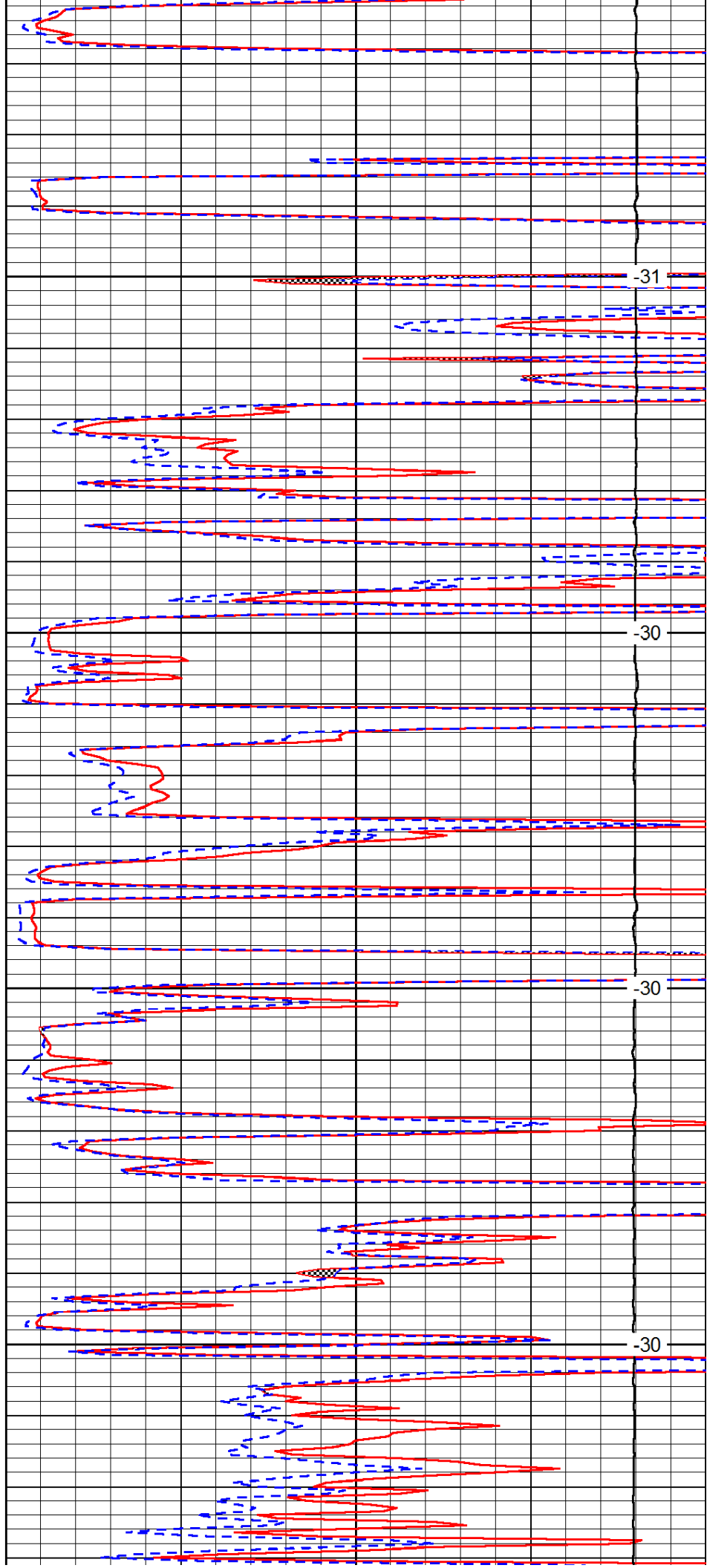


3950

4000

4050

4100

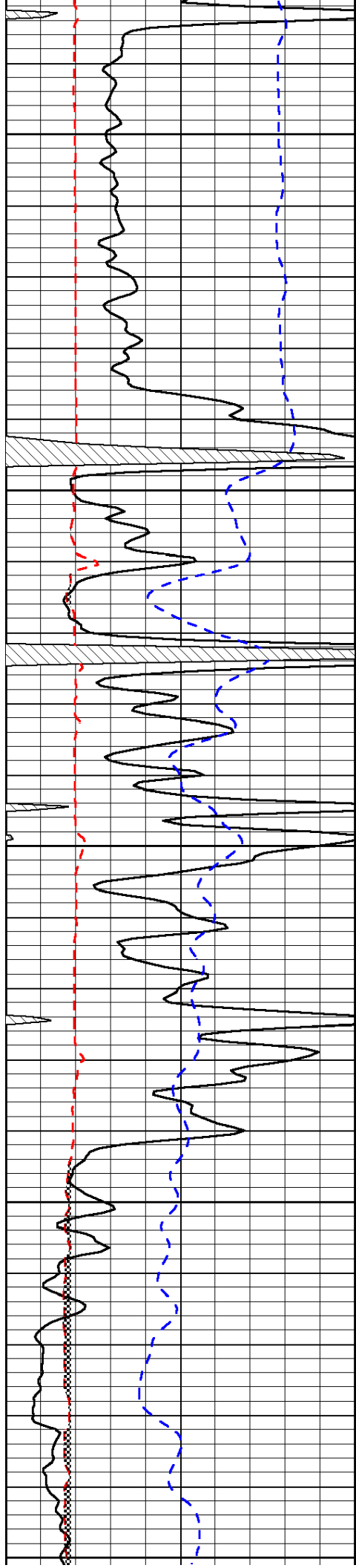


-31

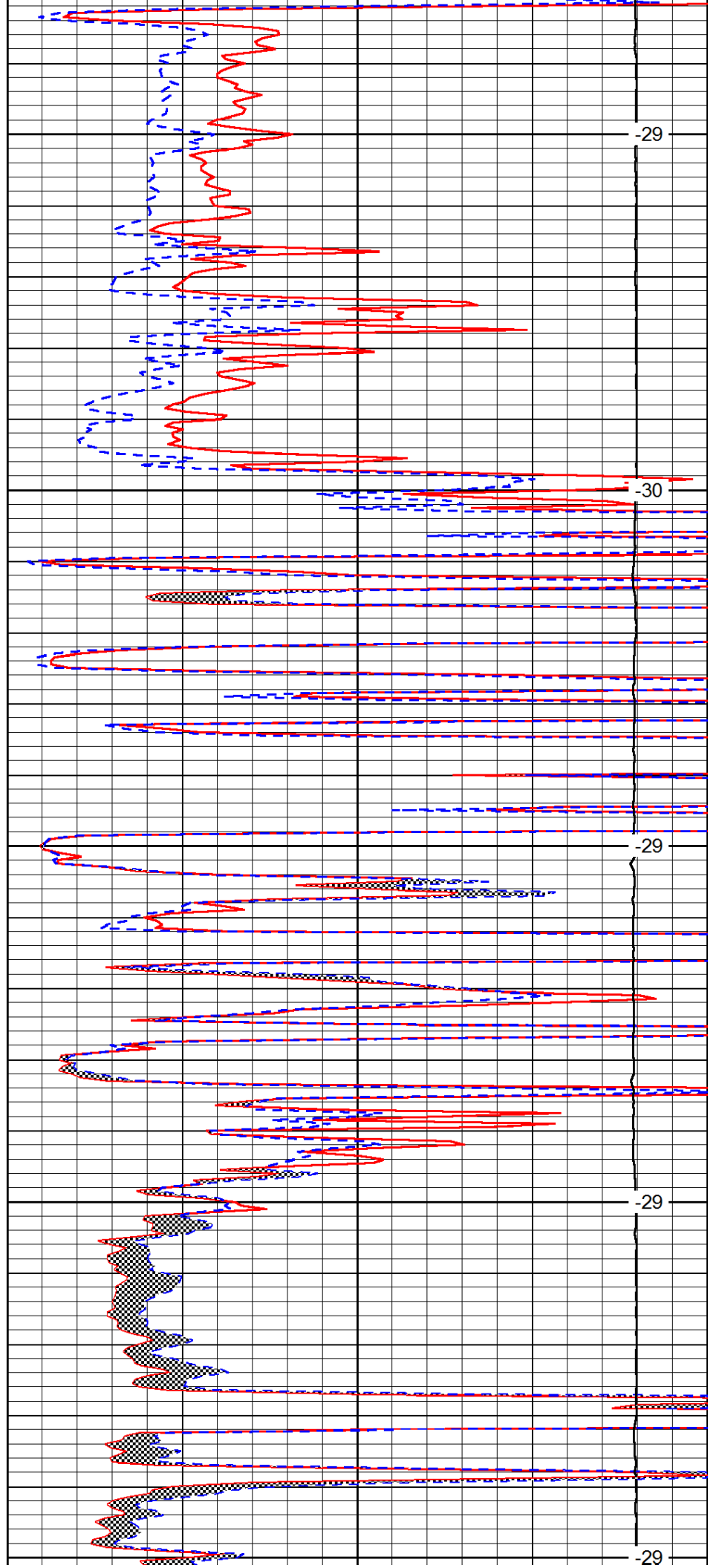
-30

-30

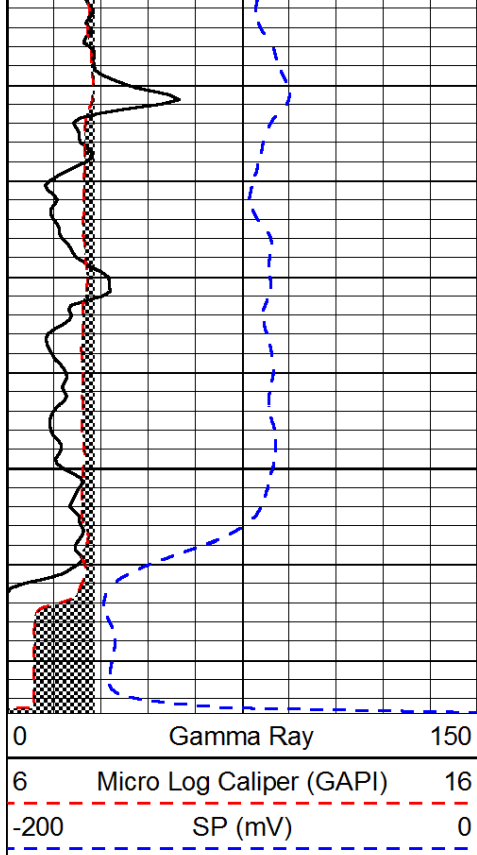
-30



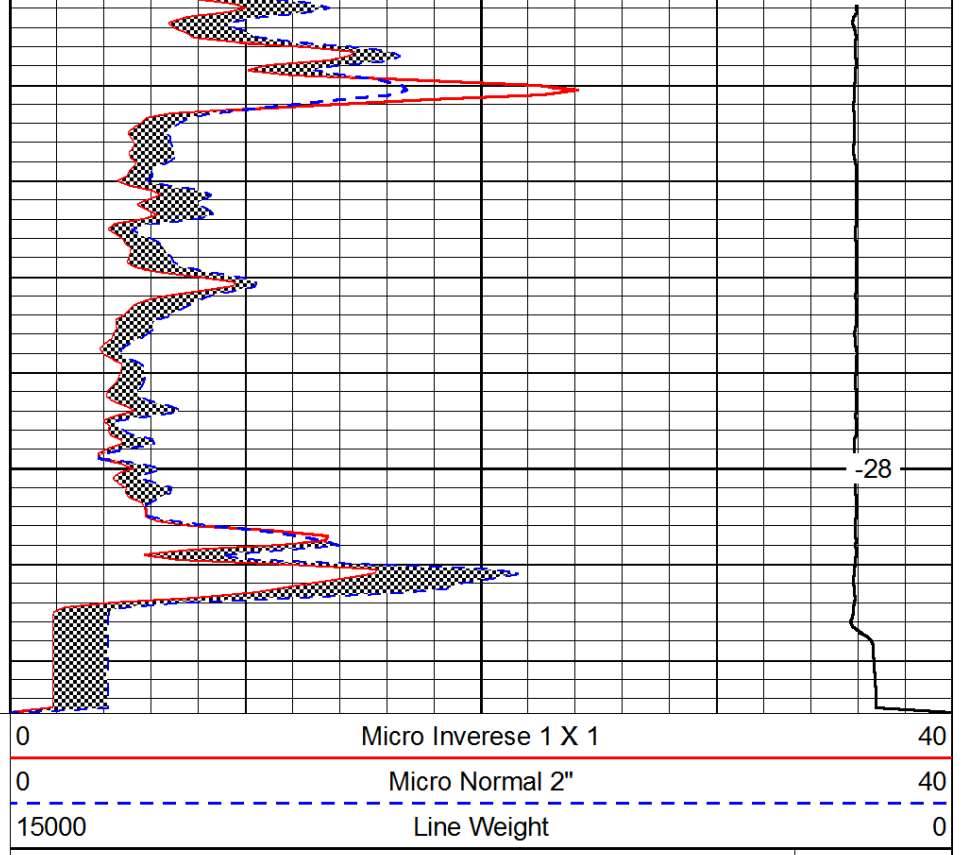
4150
4200
4250
4300
4350



-29
-30
-29
-29
-29
-29



4400



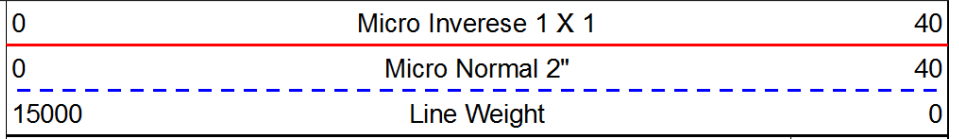
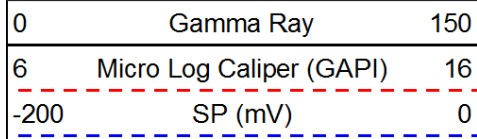
-28

LSPD

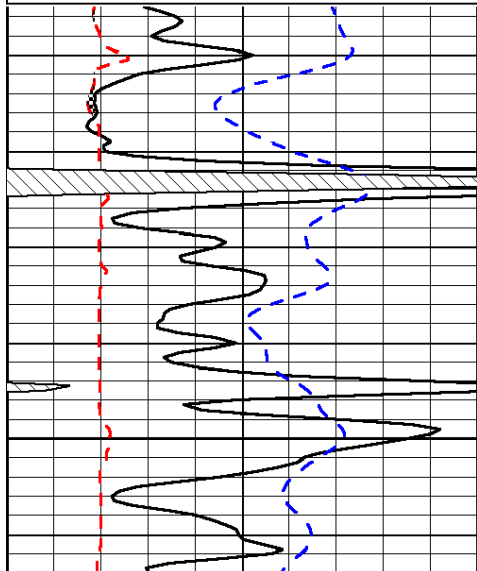


Repeat Section

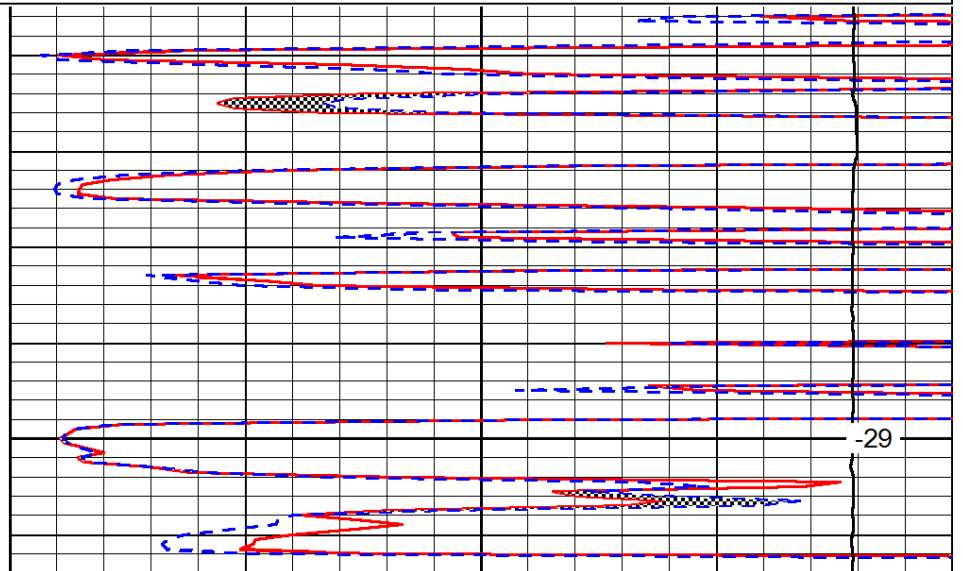
Database File: c:\warrior\data\palomino_permelia #1\palomino_permelia_1hd.db
 Dataset Pathname: rag/palorep
 Presentation Format: micro
 Dataset Creation: Thu Dec 13 11:06:53 2012
 Charted by: Depth in Feet scaled 1:240



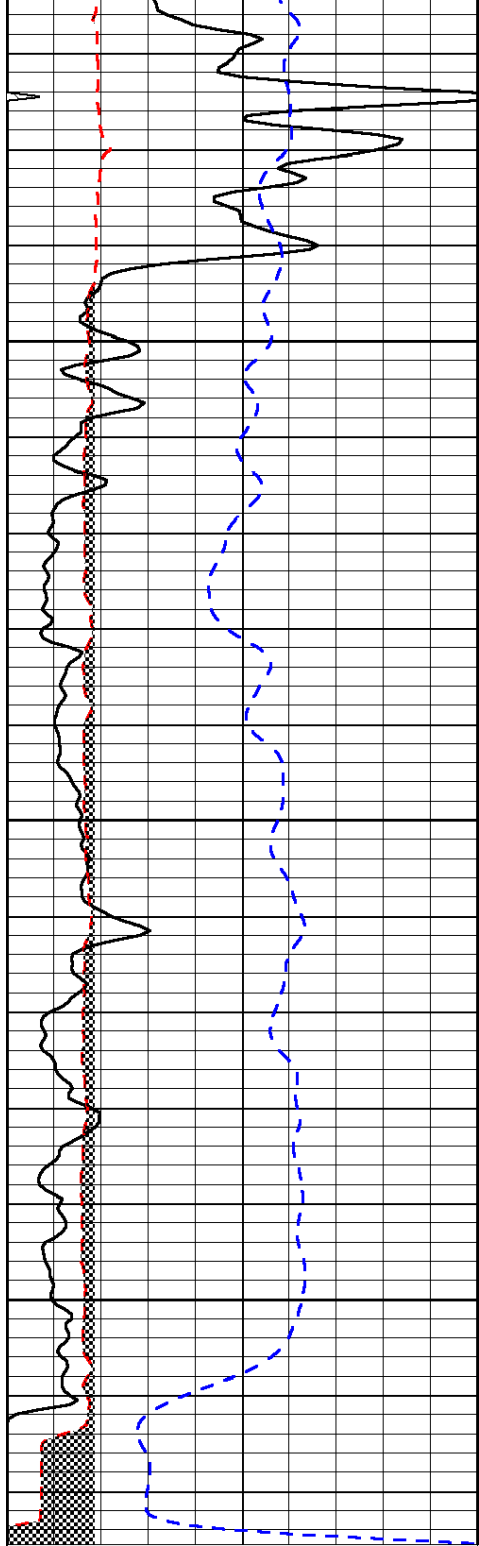
LSPD



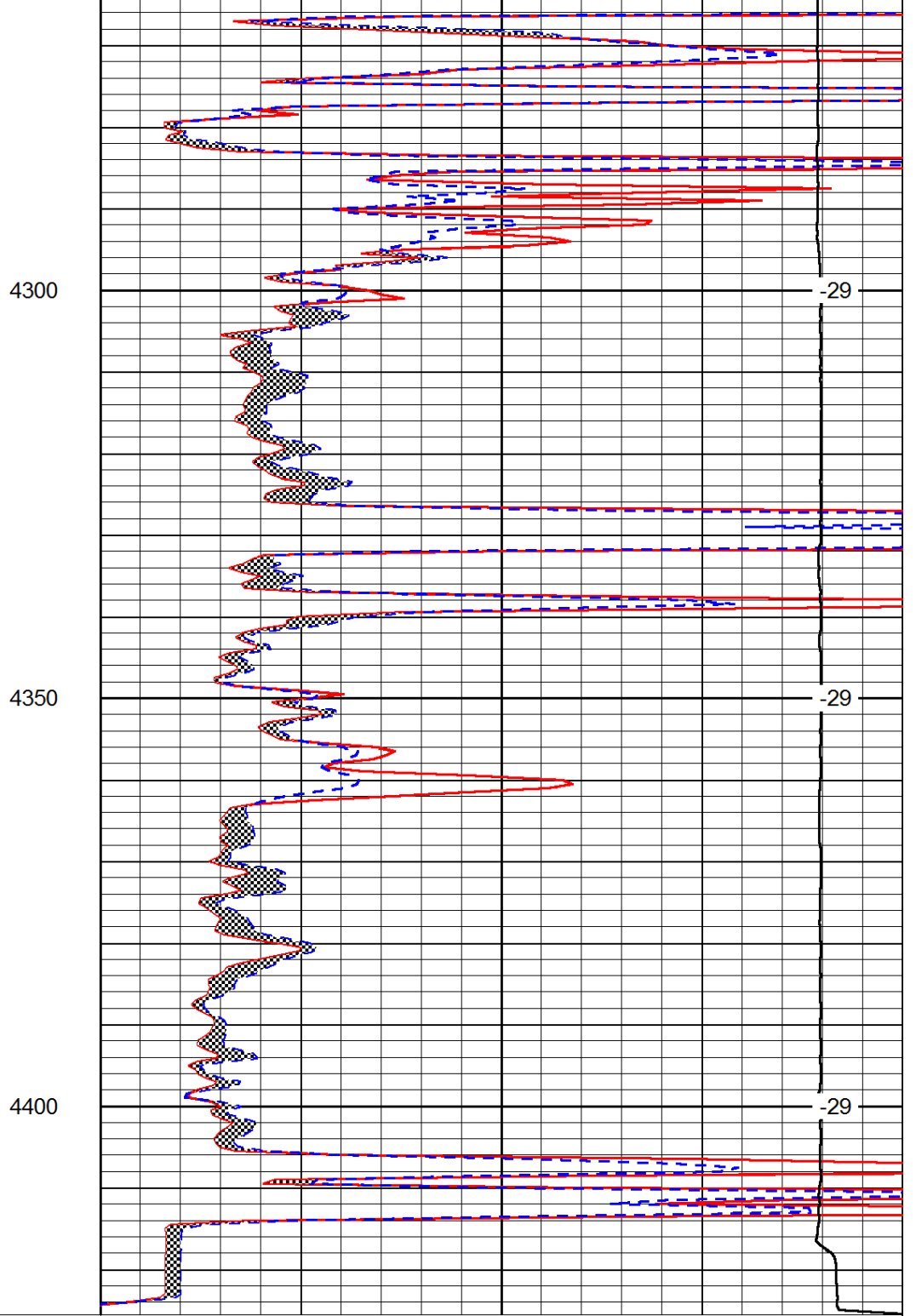
4250



-29



0	Gamma Ray	150
6	Micro Log Caliper (GAPI)	16
-200	SP (mV)	0



0	Micro Inverse 1 X 1	40
0	Micro Normal 2''	40
15000	Line Weight	0

LSPD