



Pioneer Energy Services

# Radiation Guard Log

15-195-22,841-00-00

API No.

Company **Palomino Petroleum, Inc.**

Well **Permelia No. 1**

Field **Revilo**

County **Trego**

State

**Kansas**

Location

**SW SW NE NE  
1,200' FNL & 1,054' FEL**

Other Services  
**MEL**

Sec: **18**

Twp: **15S**

Rge: **25W**

Elevation

Permanent Datum **Ground Level**

Log Measured From **Kelly Bushing**

Elevation **2389**

Drilling Measured From **Kelly Bushing**

**5 Ft. Above Perm. Datum**

K.B. **2394**  
D.F. **2389**  
G.L. **2389**

Date **12/13/2012**

Run Number **One**

Depth Driller **4420**

Depth Logger **4417**

Bottom Logged Interval **4416**

Top Log Interval **200**

Casing Driller **8.625 @ 217**

Casing Logger **217**

Bit Size **7.875**

Type Fluid in Hole **Chemical**

Salinity, ppm CL **3000**

Density / Viscosity **9.4 48**

pH / Fluid Loss **10.0 70**

Source of Sample **Flowline**

Rm @ Meas. Temp **.55 @ 67**

Rmf @ Meas. Temp **.41 @ 67**

Rmc @ Meas. Temp **.74 @ 67**

Source of Rmf / Rmc **Charts**

Rm @ BHT **.31 @ 120**

Operating Rig Time **4 Hours**

Max Rec. Temp. F **120**

Equipment Number **108**

Location **Hays**

Recorded By **J. Long**

Witnessed By **John Goldsmith**

<<< Fold Here >>>

All interpretations are opinions based on inferences from electrical or other measurements and we cannot and do not guarantee the accuracy or correctness of any interpretation, and we shall not, except in the case of gross or willful negligence on our part, be liable or responsible for any loss, costs, damages, or expenses incurred or sustained by anyone resulting from any interpretation made by any of our officers, agents or employees. These interpretations are also subject to our general terms and conditions set out in our current Price Schedule.

### Comments

Thank you for using Pioneer Energy Services  
www.pioneerres.com  
785 625 3858

Utica, 1 East to E Road, 4 North to County Line, 4 North at jog in road, 3/4 East, South Into

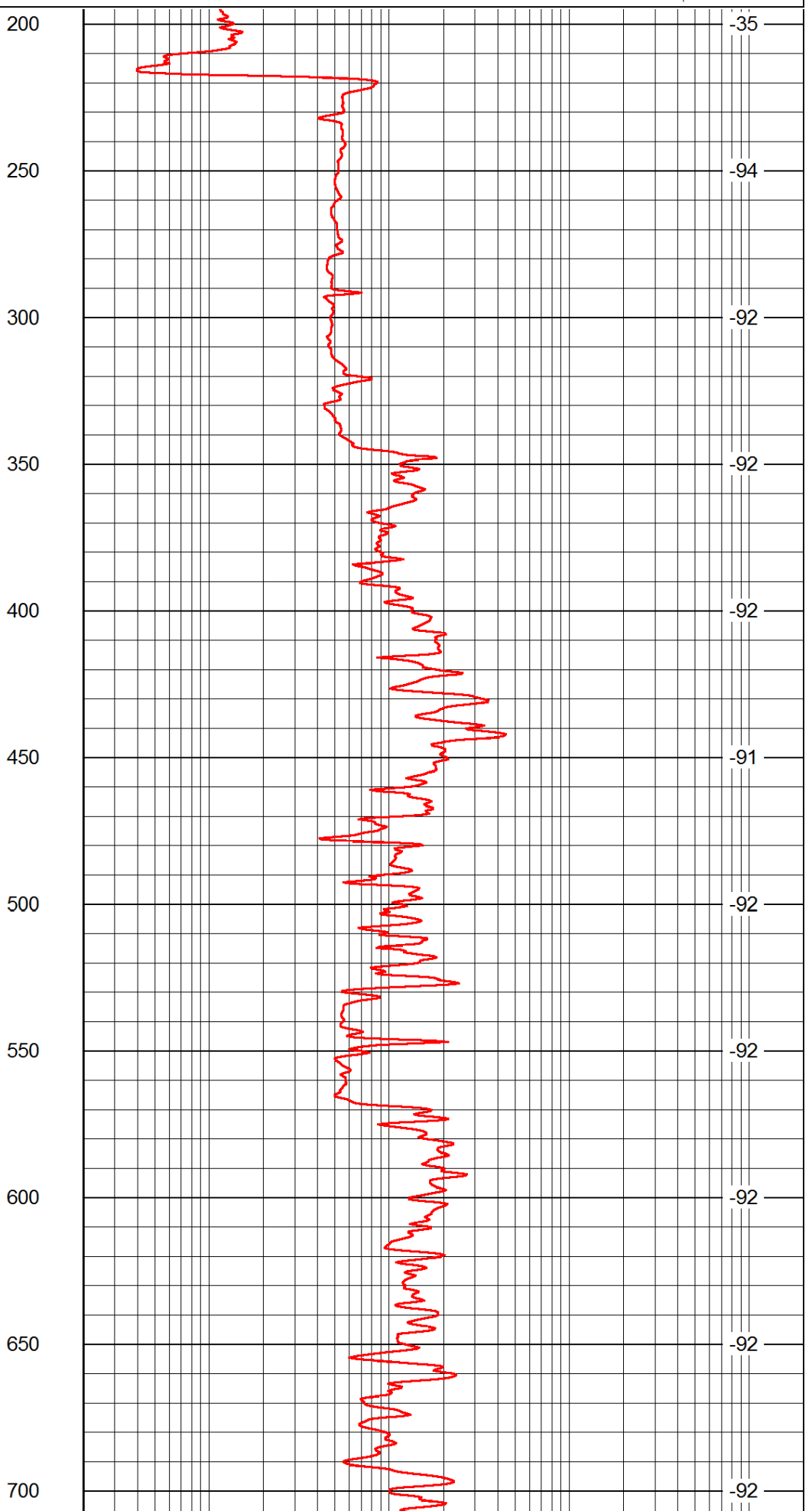
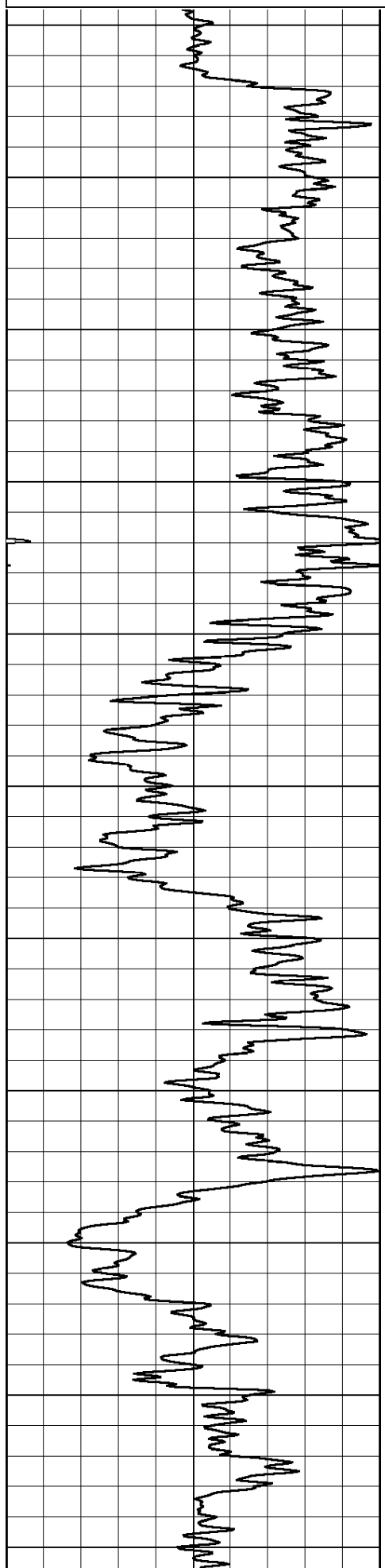
Database File: c:\warrior\data\palomino\_permelia #1\palomino\_permelia\_1hd.db  
 Dataset Pathname: rag/palorag  
 Presentation Format: rag2in  
 Dataset Creation: Thu Dec 13 11:06:50 2012  
 Charted by: Depth in Feet scaled 1:600

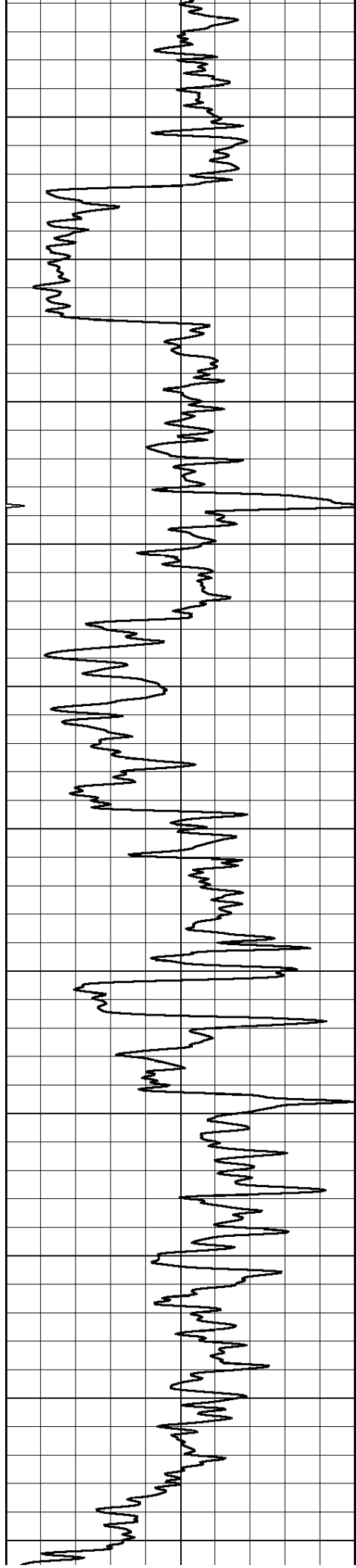
0 Gamma Ray 150

0.2 lgrd

2000

LSPD





750

800

850

900

950

1000

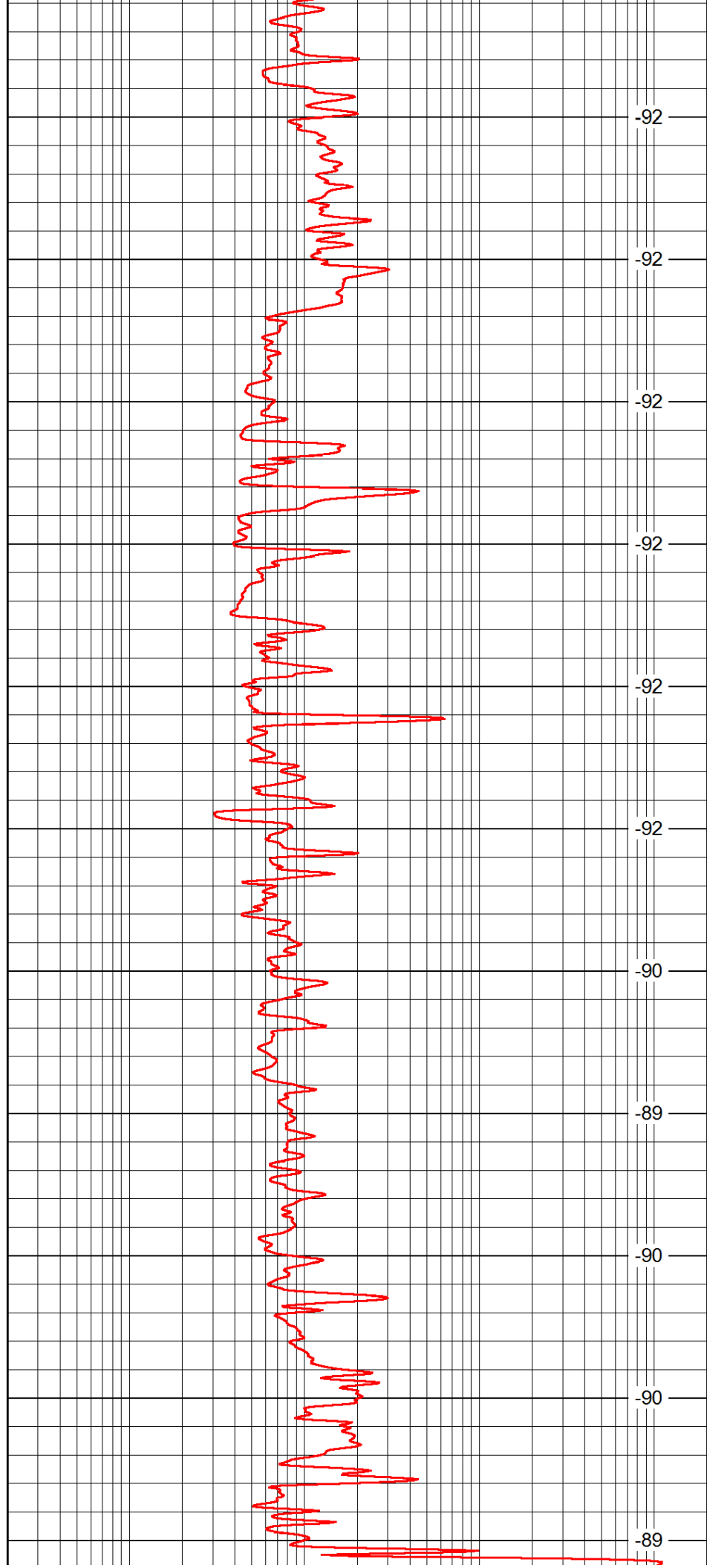
1050

1100

1150

1200

1250



-92

-92

-92

-92

-92

-92

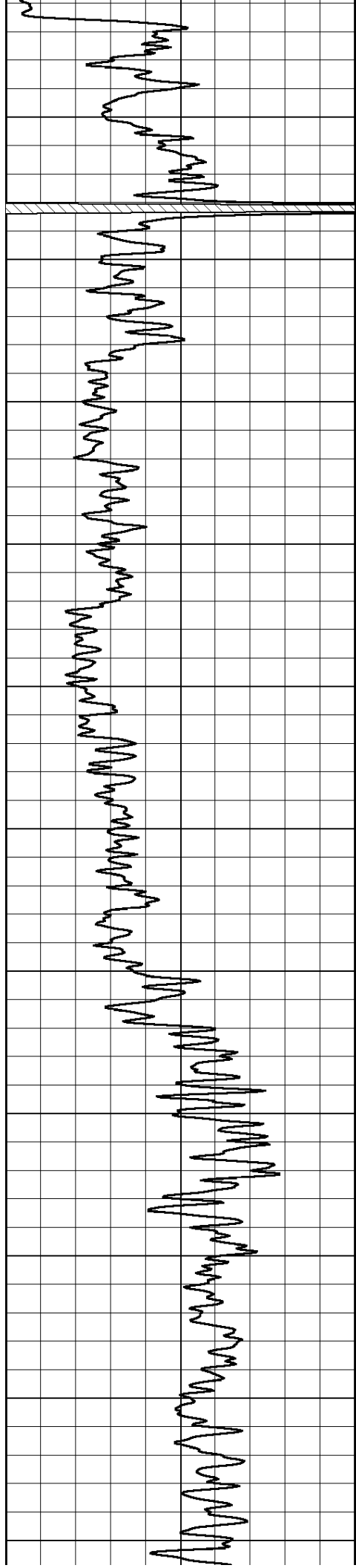
-90

-89

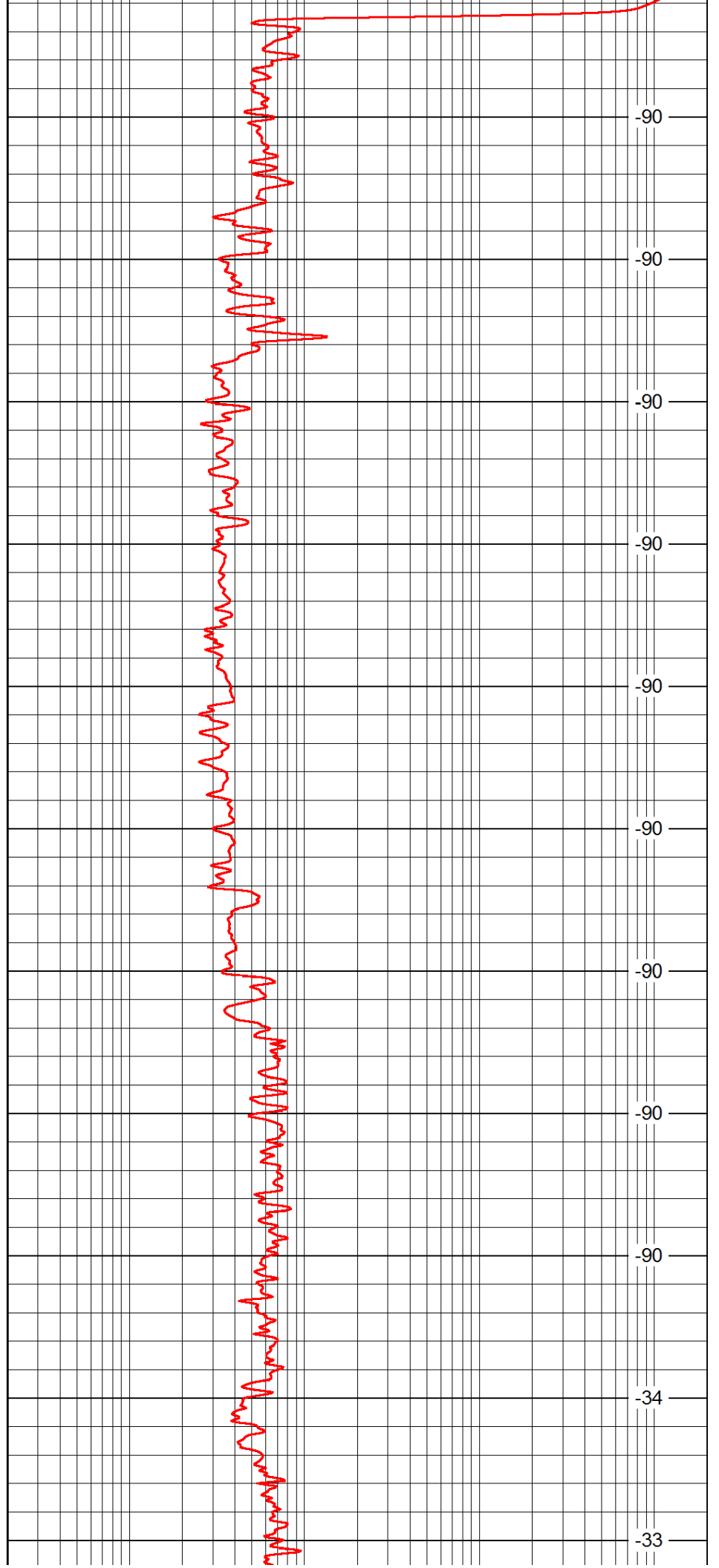
-90

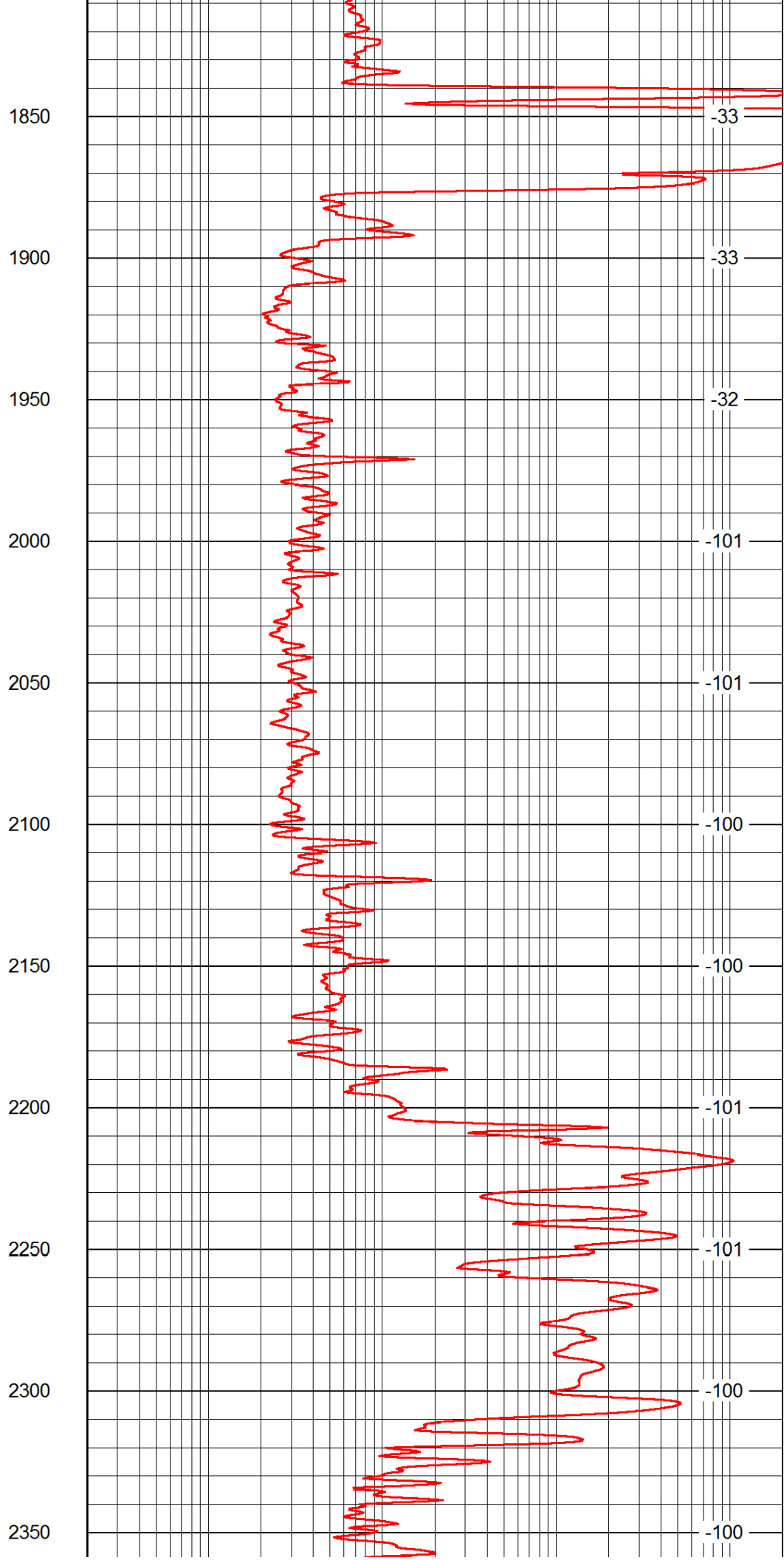
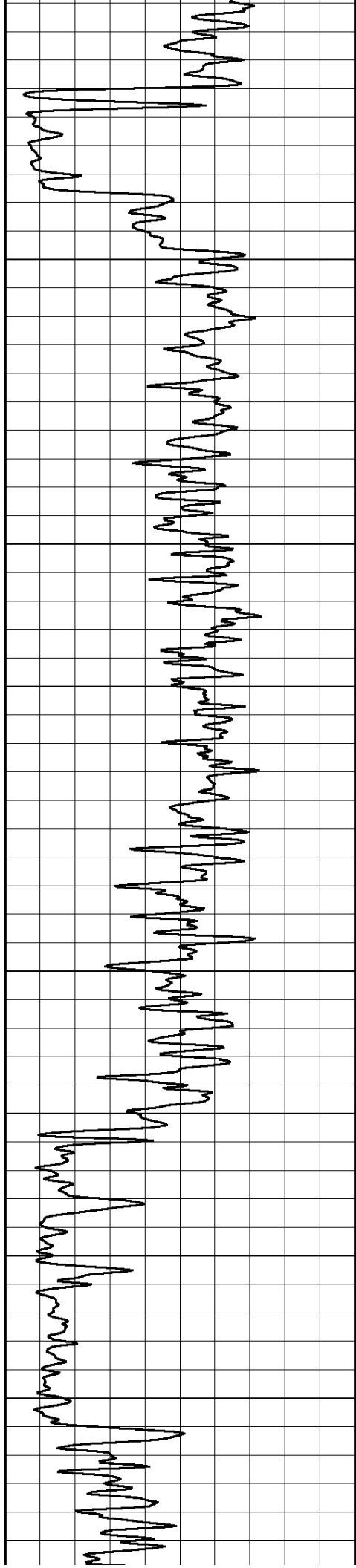
-90

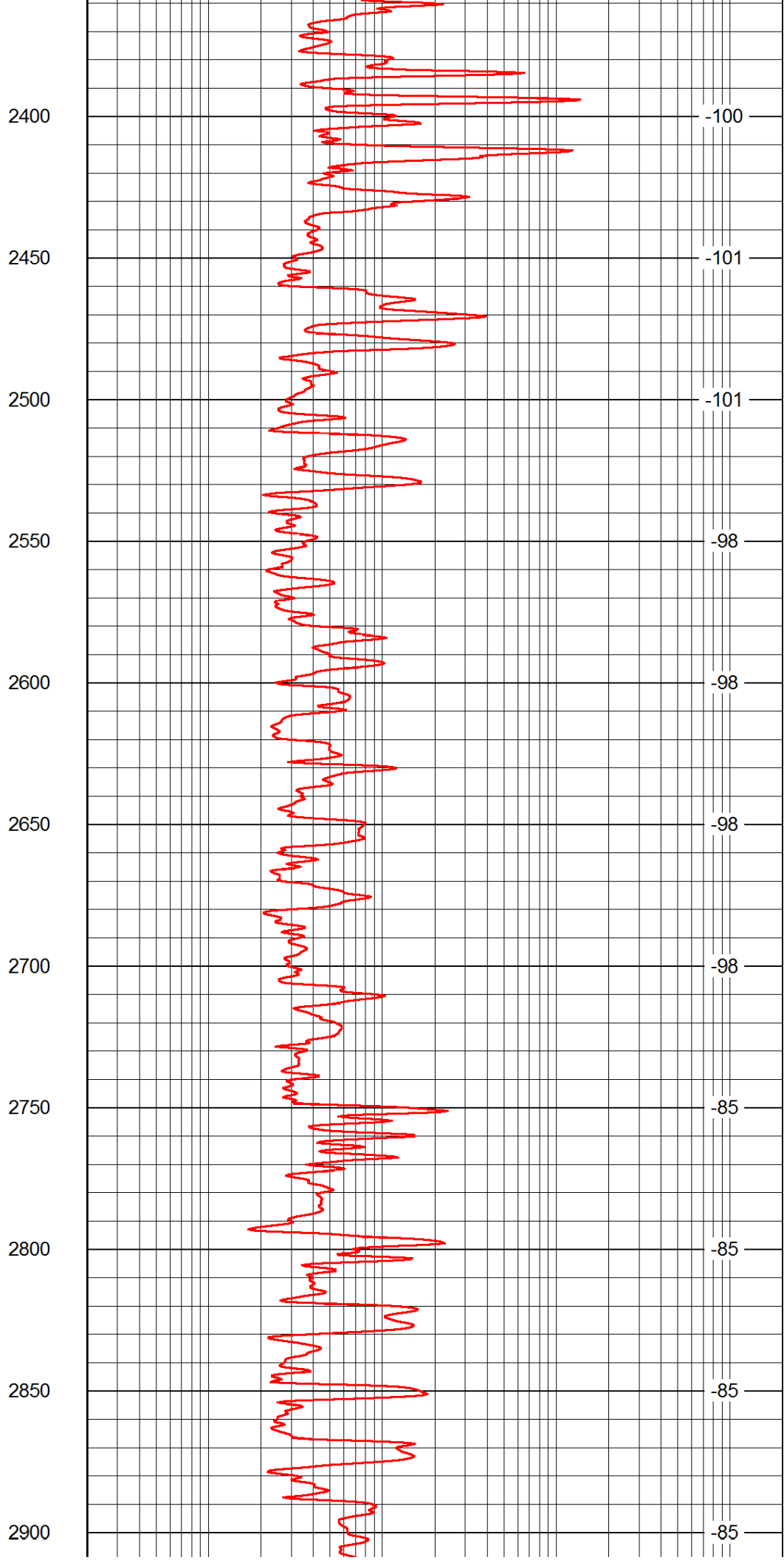
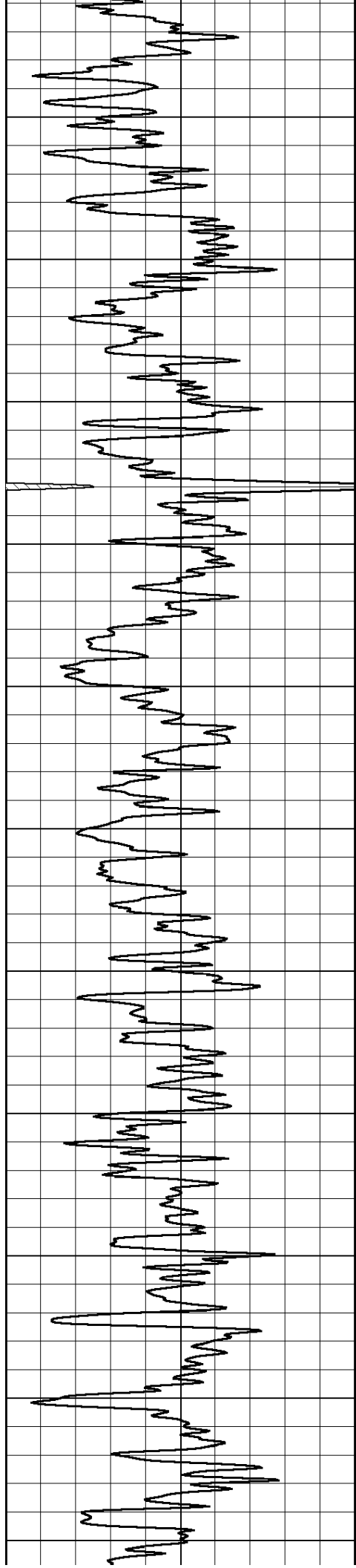
-89

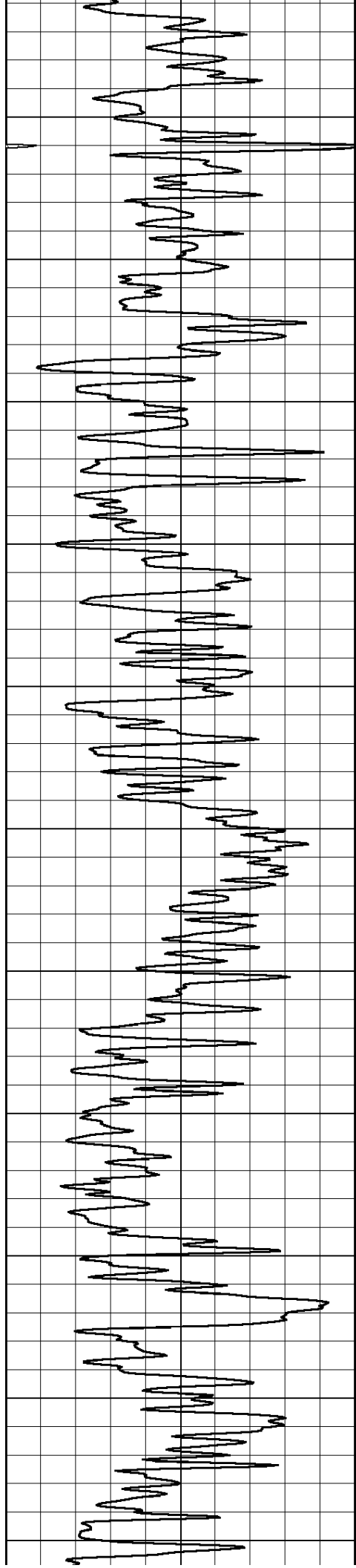


1300  
1350  
1400  
1450  
1500  
1550  
1600  
1650  
1700  
1750  
1800









2950

3000

3050

3100

3150

3200

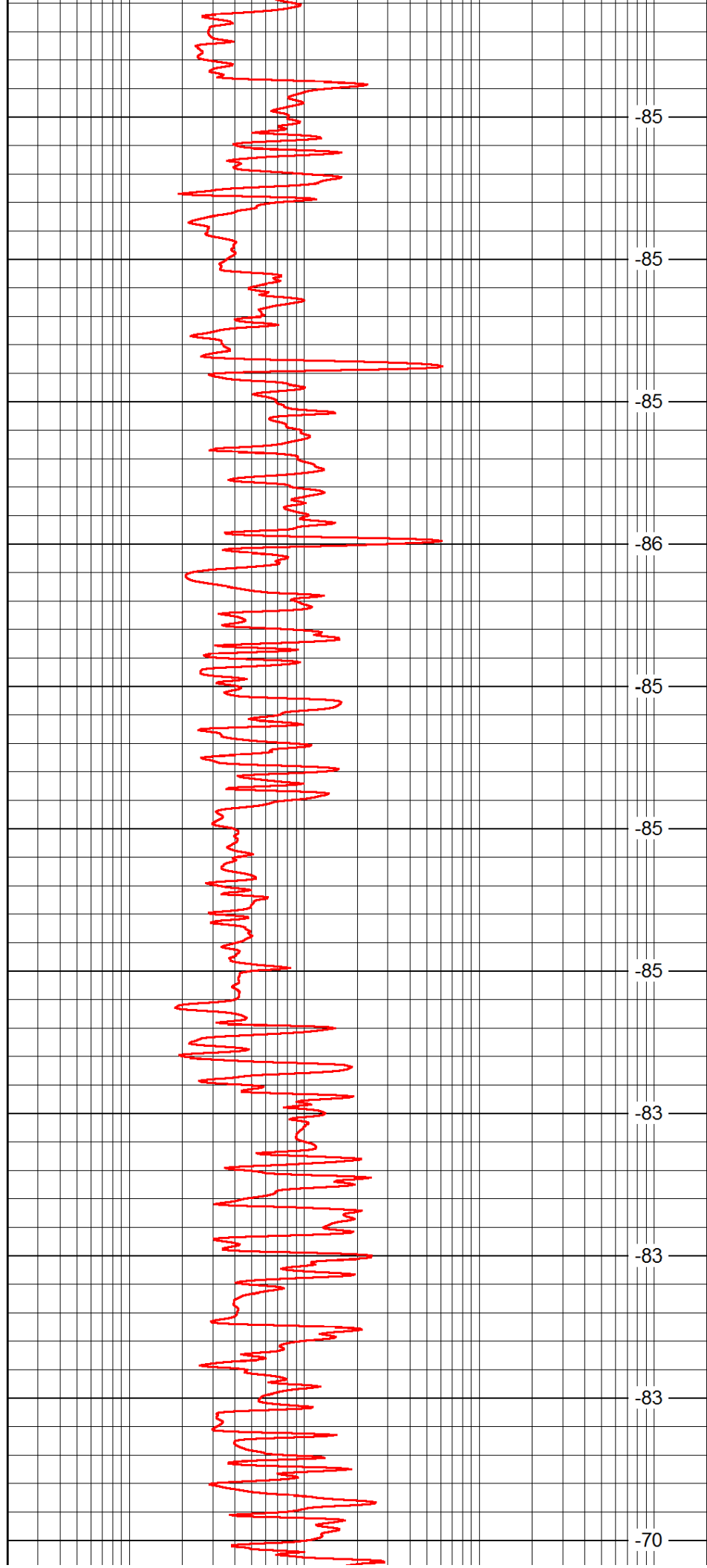
3250

3300

3350

3400

3450



-85

-85

-85

-86

-85

-85

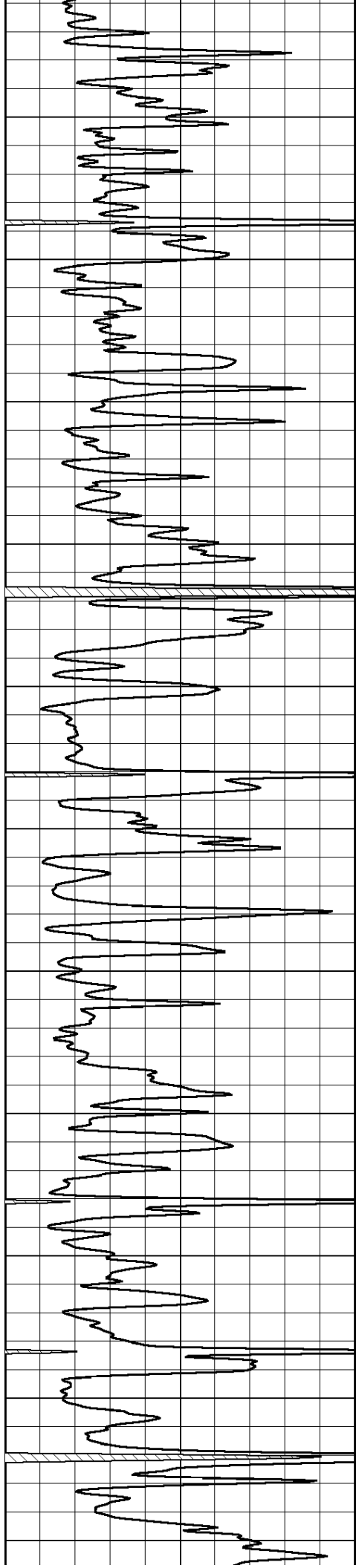
-85

-83

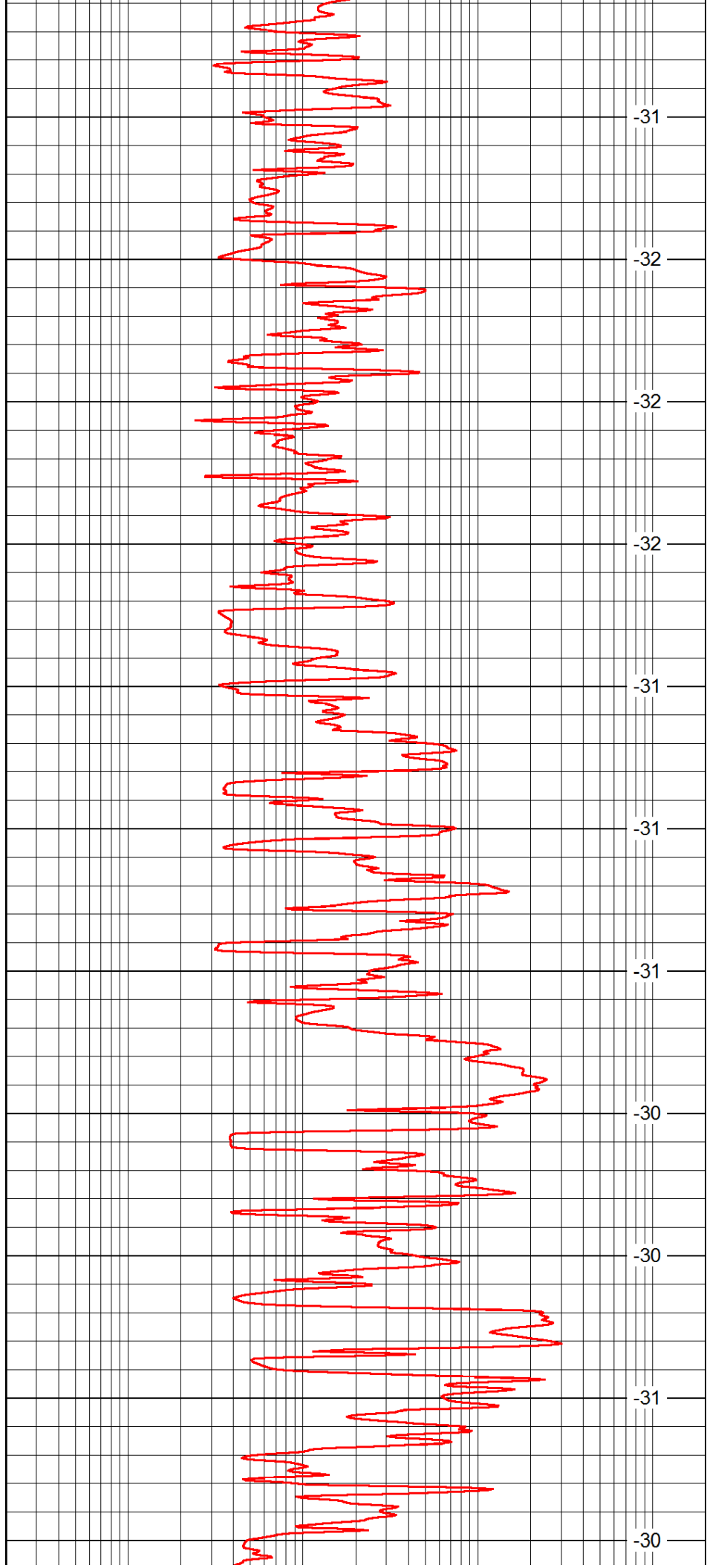
-83

-83

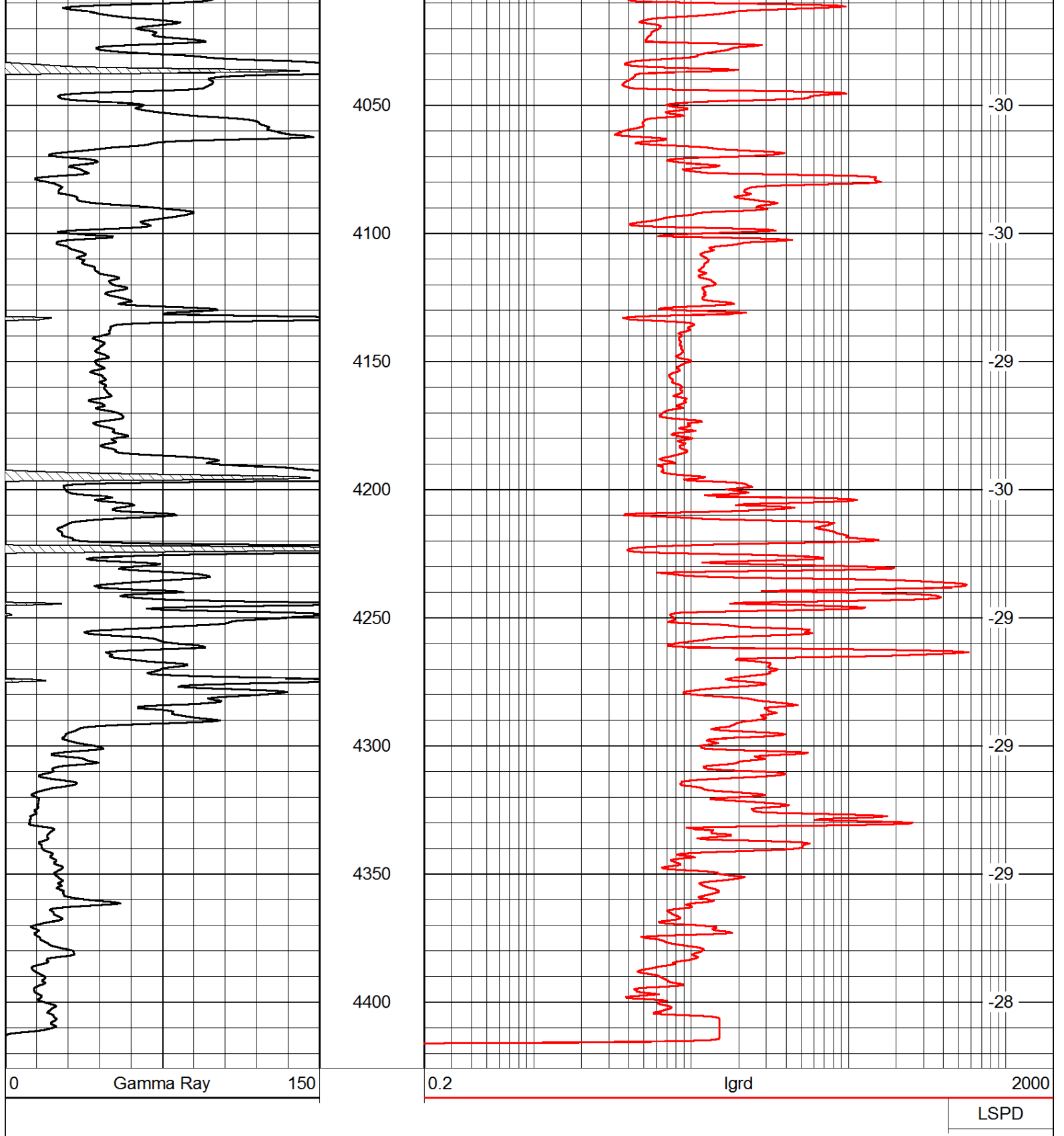
-70



3500  
3550  
3600  
3650  
3700  
3750  
3800  
3850  
3900  
3950  
4000



-31  
-32  
-32  
-32  
-31  
-31  
-31  
-31  
-30  
-30  
-31  
-30

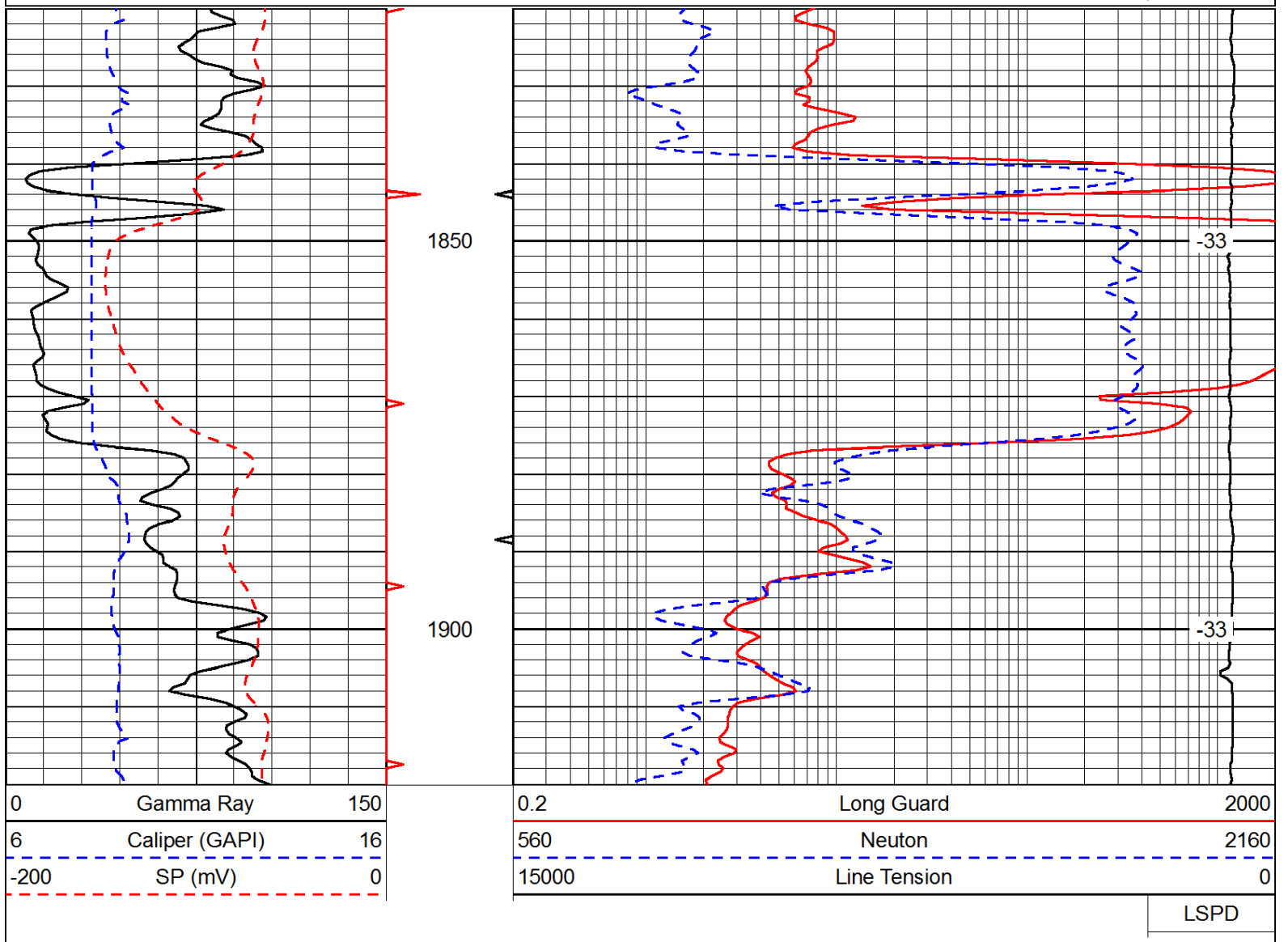


Database File: c:\warrior\data\palomino\_permelia #1\palomino\_permelia\_1hd.db  
 Dataset Pathname: rag/palorag  
 Presentation Format: rag  
 Dataset Creation: Thu Dec 13 11:06:50 2012  
 Charted by: Depth in Feet scaled 1:240

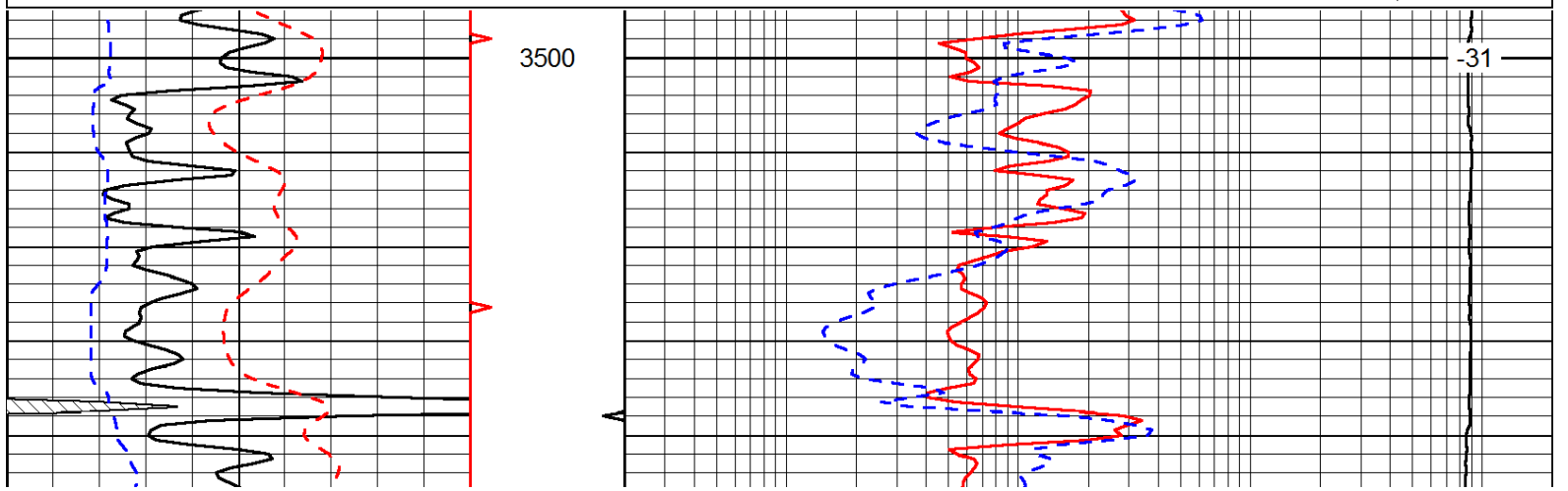
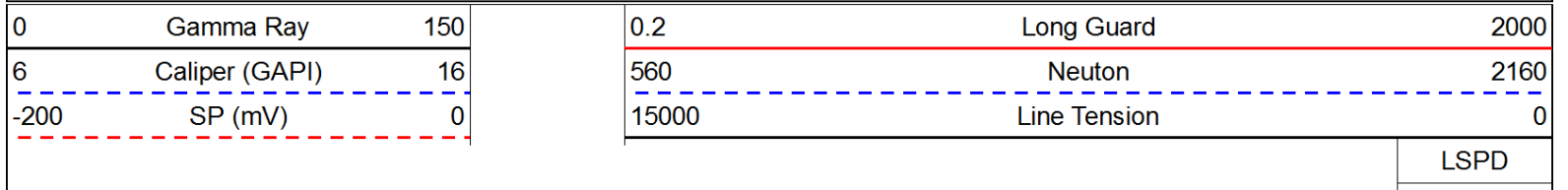
0	Gamma Ray	150
6	Caliper (GAPI)	16
-200	SP (mV)	0

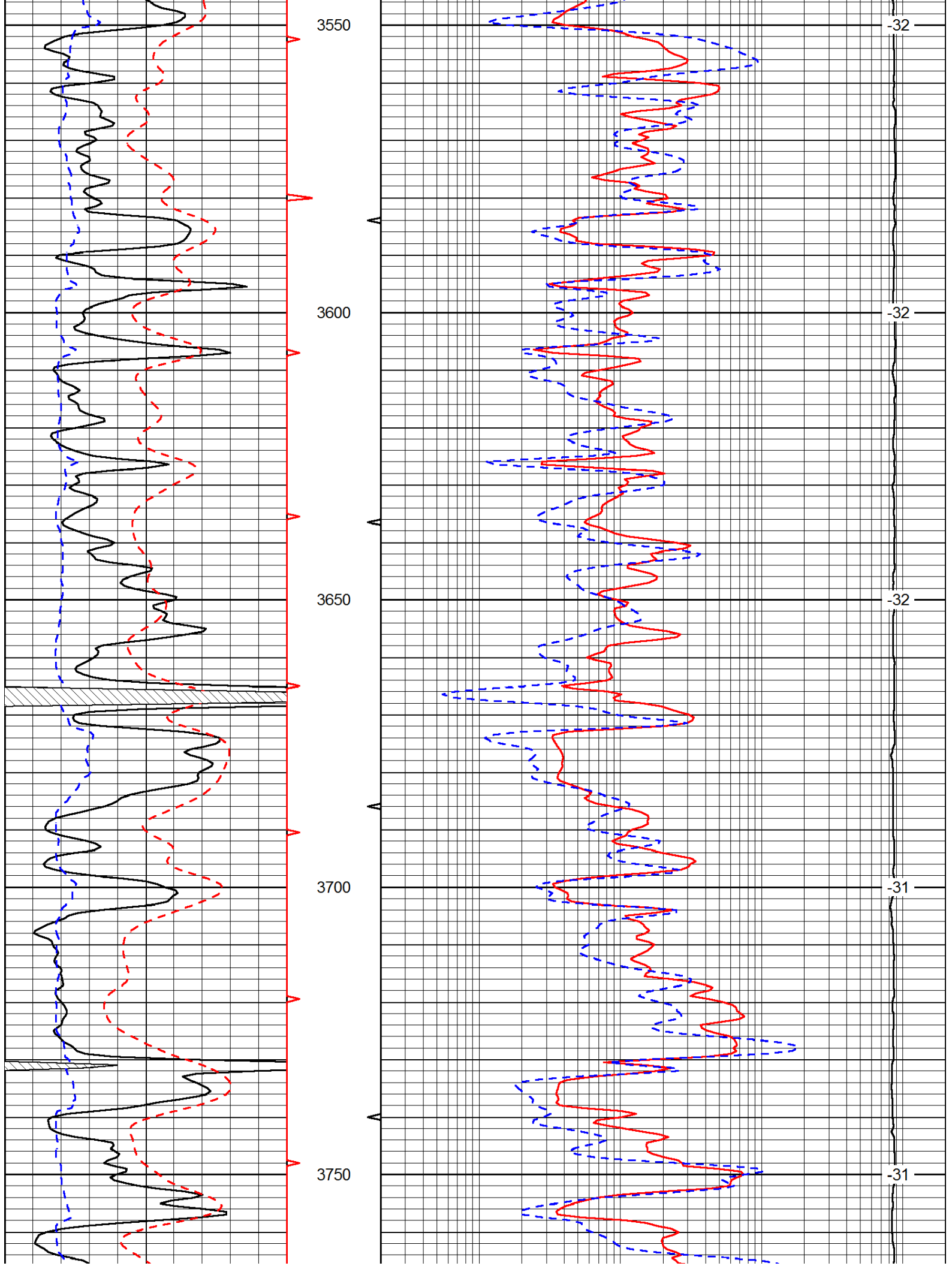
0.2	Long Guard	2000
560	Neutron	2160
15000	Line Tension	0

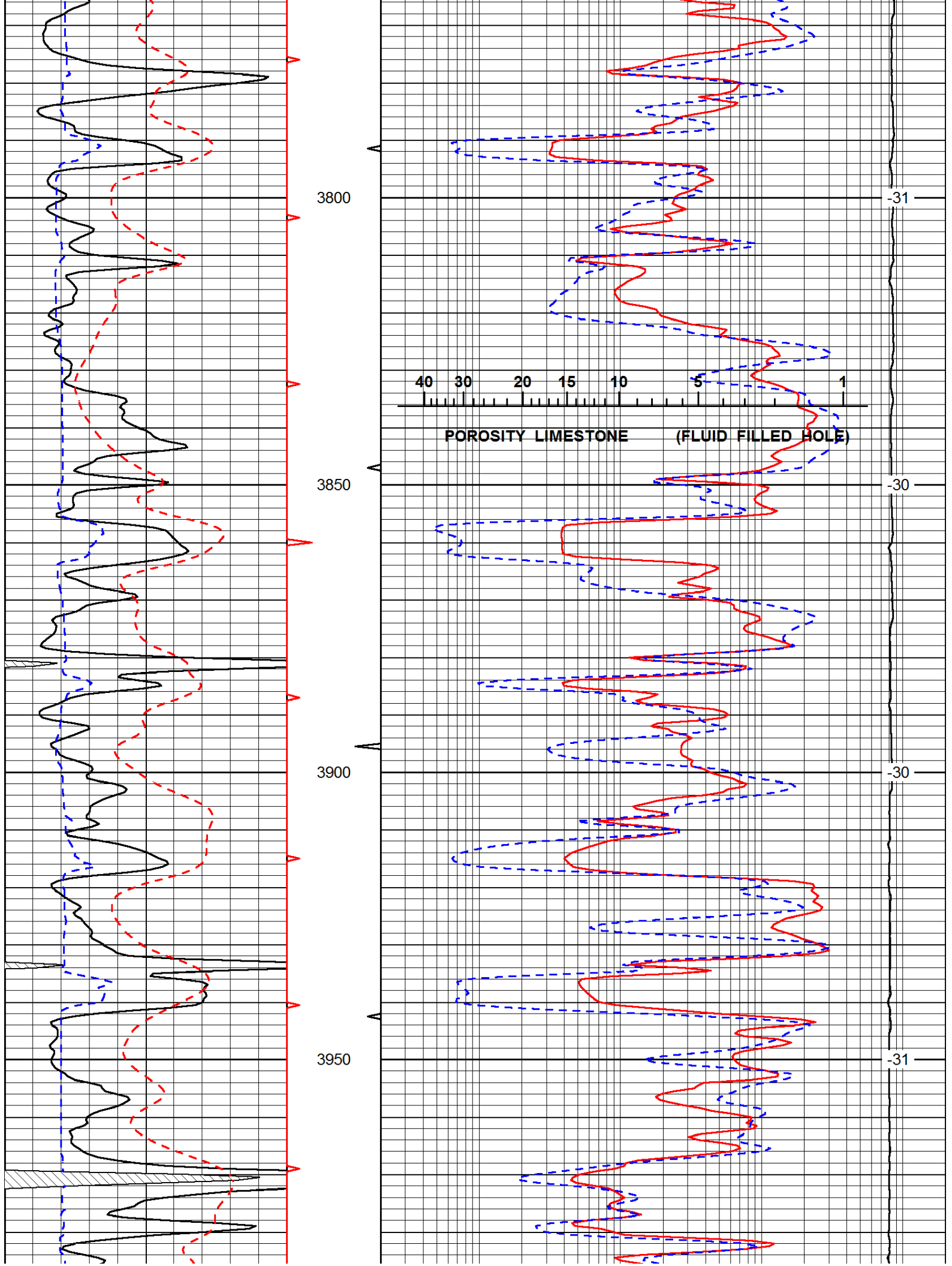
LSPD

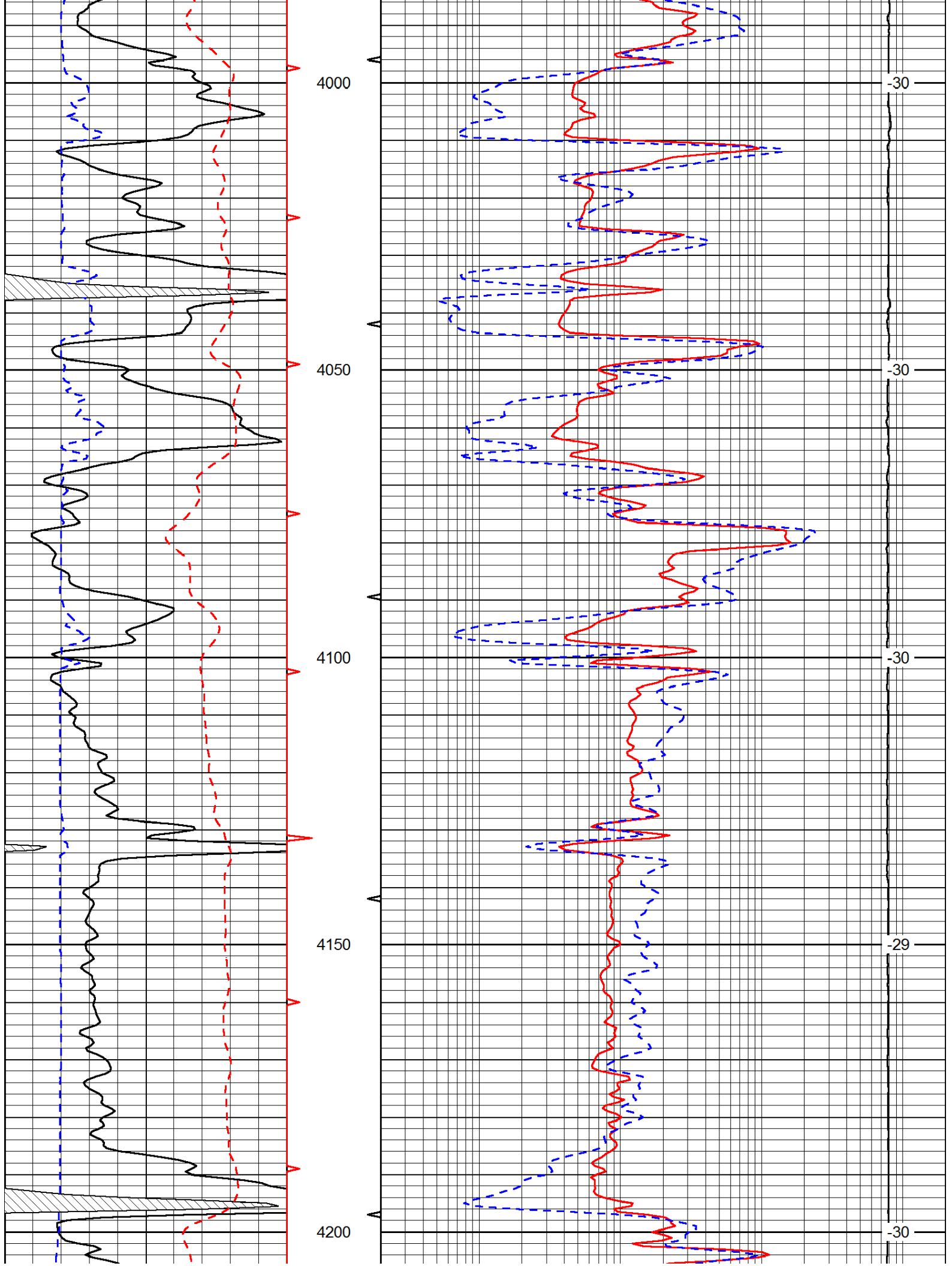


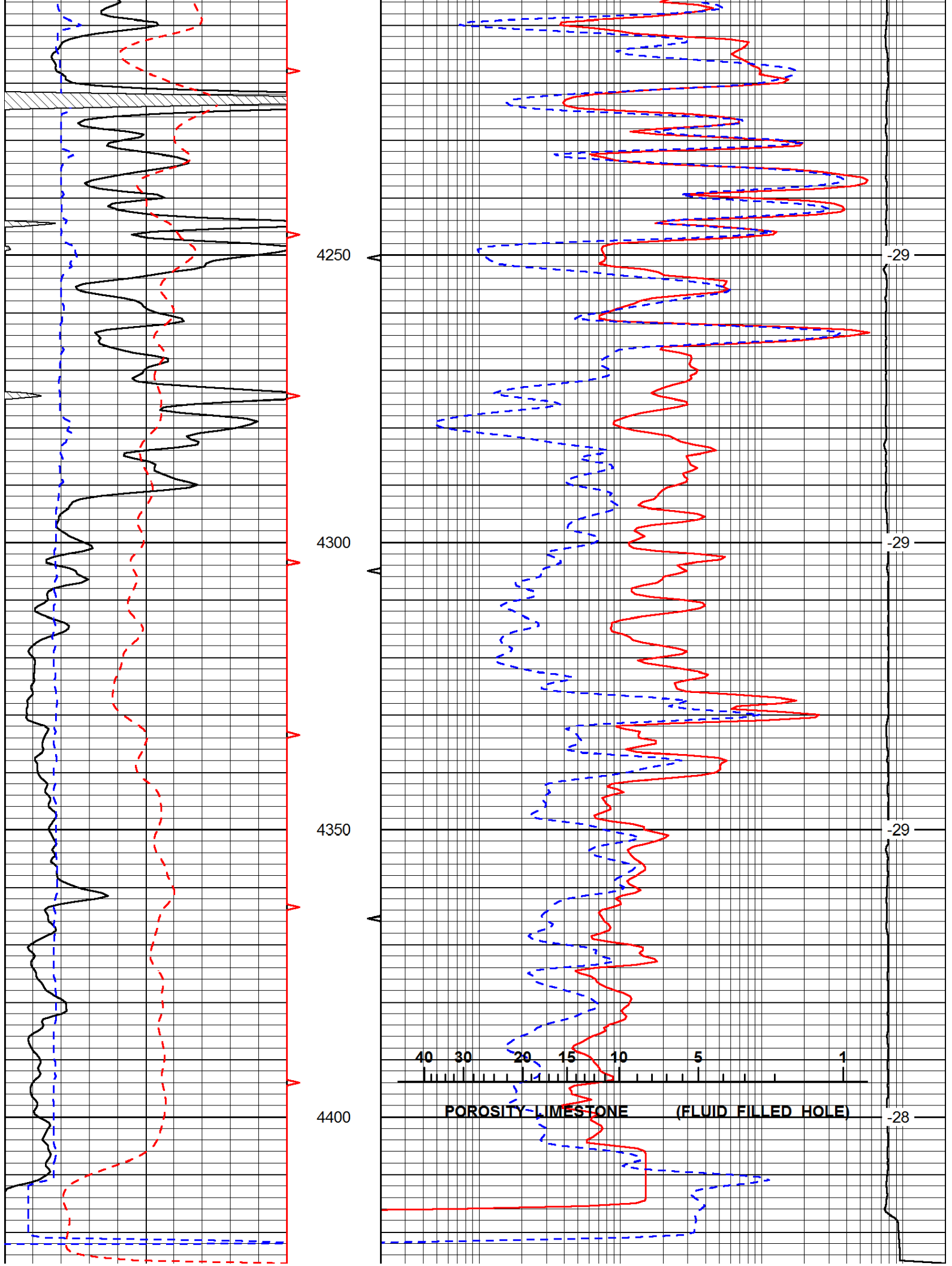
Database File: c:\warrior\data\palomino\_permelia #1\palomino\_permelia\_1hd.db  
 Dataset Pathname: rag/palorag  
 Presentation Format: rag  
 Dataset Creation: Thu Dec 13 11:06:50 2012  
 Charted by: Depth in Feet scaled 1:240











0	Gamma Ray	150
6	Caliper (GAPI)	16
-200	SP (mV)	0

0.2	Long Guard	2000
560	Neuton	2160
15000	Line Tension	0

LSPD



Pioneer Energy Services

# Repeat Section

Database File: c:\warrior\data\palomino\_permelia #1\palomino\_permelia\_1hd.db  
 Dataset Pathname: rag/palorep  
 Presentation Format: rag  
 Dataset Creation: Thu Dec 13 11:06:53 2012  
 Charted by: Depth in Feet scaled 1:240

0	Gamma Ray	150
6	Caliper (GAPI)	16
-200	SP (mV)	0

0.2	Long Guard	2000
560	Neuton	2160
15000	Line Tension	0

LSPD

