



Pioneer Energy Services

Dual Induction Log

15-009-25,786-00-00

API No.

Company **John Roy Evans Oil Company, LLC**

Well **Zorn "B" #3**

Field **Demel**

County **Barton**

State

Kansas

Location

**SW NE NE NW
520' FNL & 3,285' FEL**

Sec: **6**

Twp: **17S**

Rge: **11W**

Elevation

Permanent Datum **Ground Level**

Log Measured From **Kelly Bushing**

Drilling Measured From **Kelly Bushing**

Elevation **1866**

13 Ft. Above Perm. Datum

Date

12/1/2012

Run Number

One

Depth Driller

3337

Depth Logger

3332

Bottom Logged Interval

3331

Top Log Interval

700

Casing Driller

8.625 @ 745

Casing Logger

741

Bit Size

7.875

Type Fluid in Hole

Chemical

Salinity, ppm CL

4800

Density / Viscosity

9.1

pH / Fluid Loss

10.0

Source of Sample

Flowline

Rm @ Meas. Temp

1.20 @ 70

Rmf @ Meas. Temp

.90 @ 70

Rmc @ Meas. Temp

1.62 @ 70

Source of Rmf / Rmc

Charts

Rm @ BHT

.77 @ 109

Operating Rig Time

4 Hours

Max Rec. Temp. F

109

Equipment Number

108

Location

Hays

Recorded By

J. Long

Witnessed By

Josh Austin

<<< Fold Here >>>

All interpretations are opinions based on inferences from electrical or other measurements and we cannot and do not guarantee the accuracy or correctness of any interpretation, and we shall not, except in the case of gross or willful negligence on our part, be liable or responsible for any loss, costs, damages, or expenses incurred or sustained by anyone resulting from any interpretation made by any of our officers, agents or employees. These interpretations are also subject to our general terms and conditions set out in our current Price Schedule.

Comments

Thank you for using Pioneer Energy Services
www.pioneerenergy.com
 785 625 3858

Clafflin, 6 North, 2 3/4 West, South Into

Database File: c:\warrior\data\john r evans_zorn 'b' #3\johnroyevans_zorn_b_3hd.db
 Dataset Pathname: dil/johnstck
 Presentation Format: dil2in
 Dataset Creation: Sat Dec 01 13:22:35 2012
 Charted by: Depth in Feet scaled 1:600

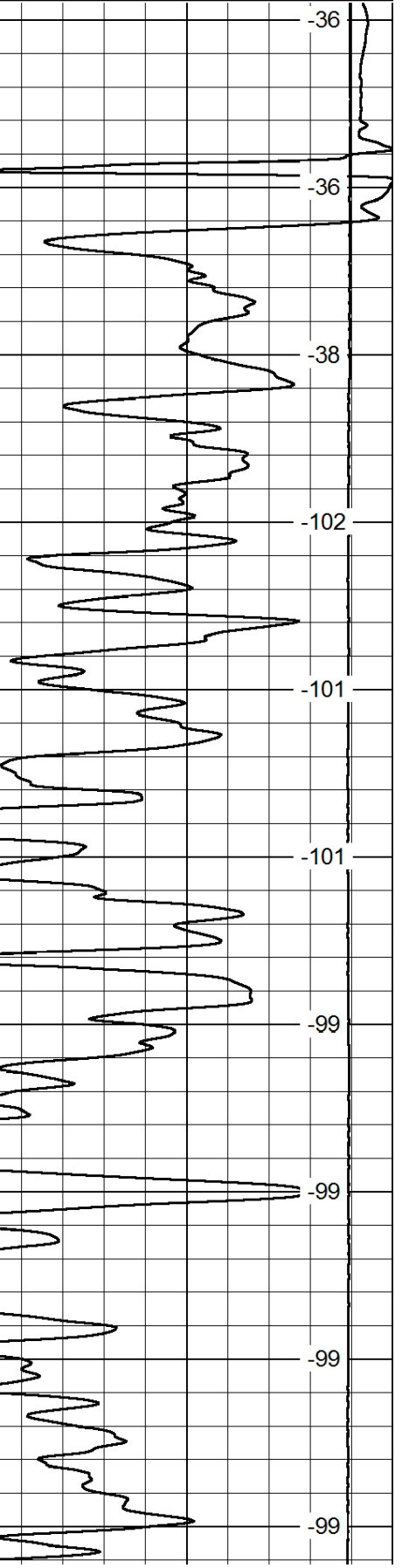
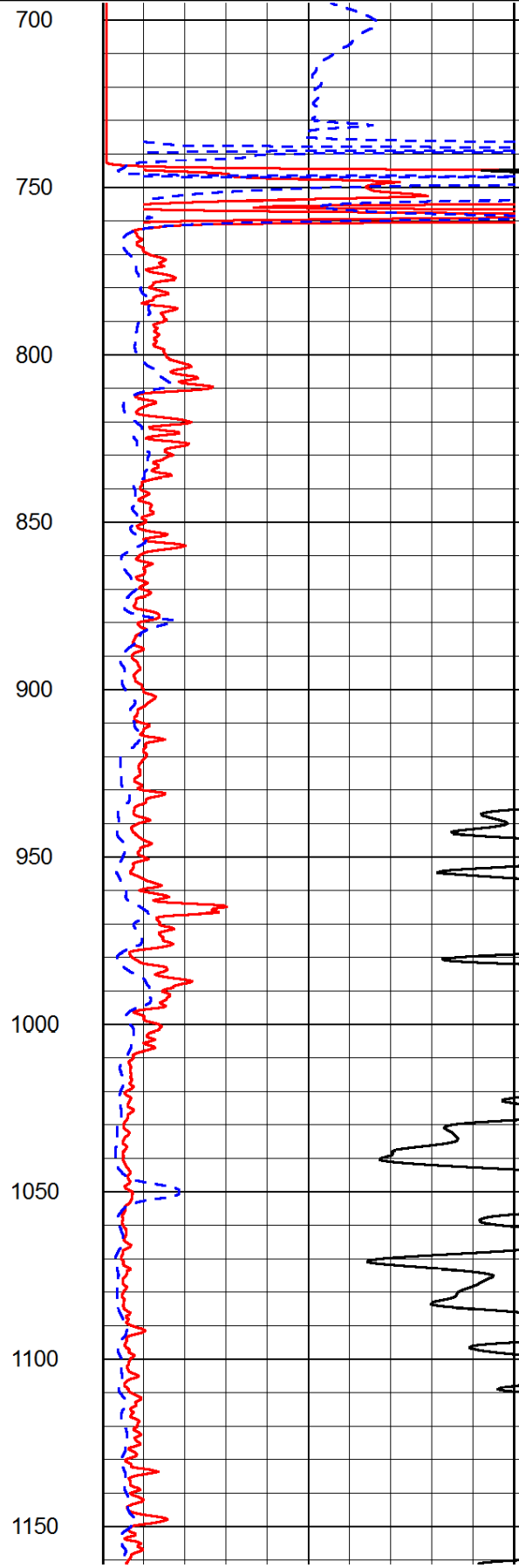
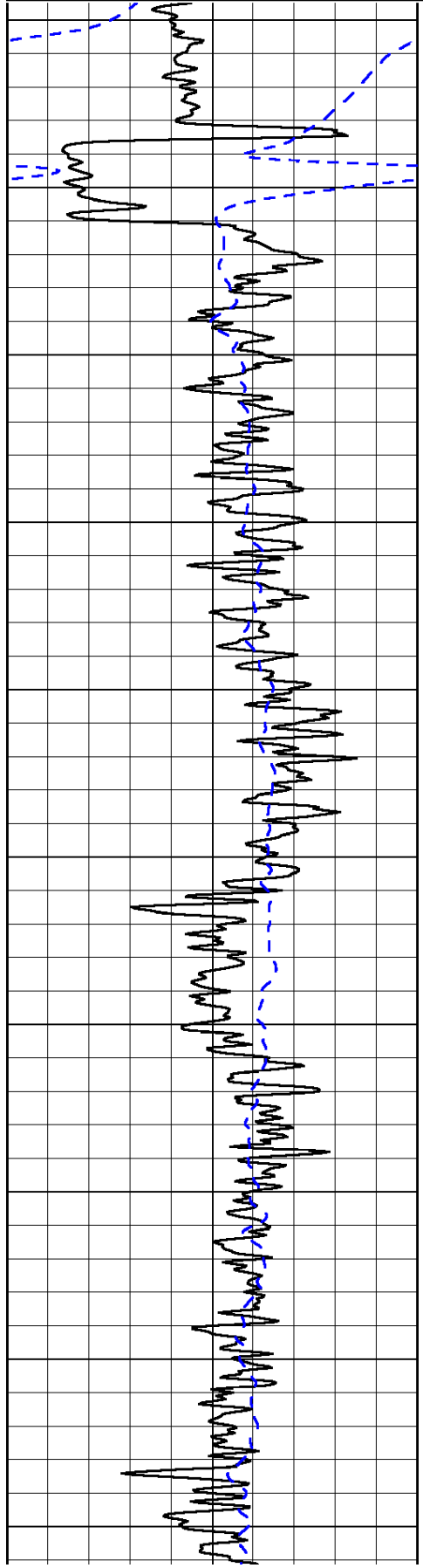
0	Gamma Ray	150
-200	SP (mV)	0

0	Shallow Resistivity	50
0	Deep Resistivity	50

LSPD

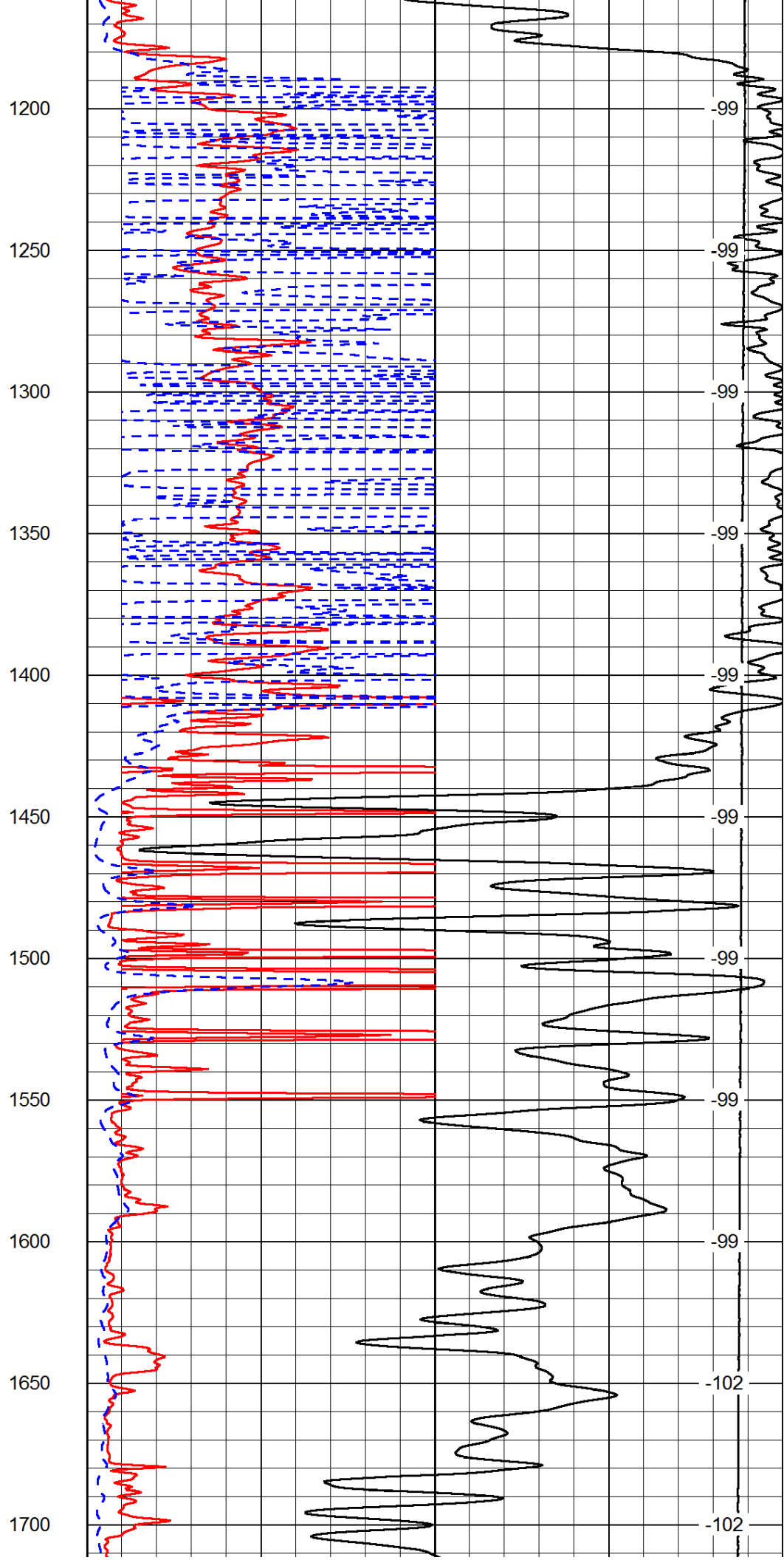
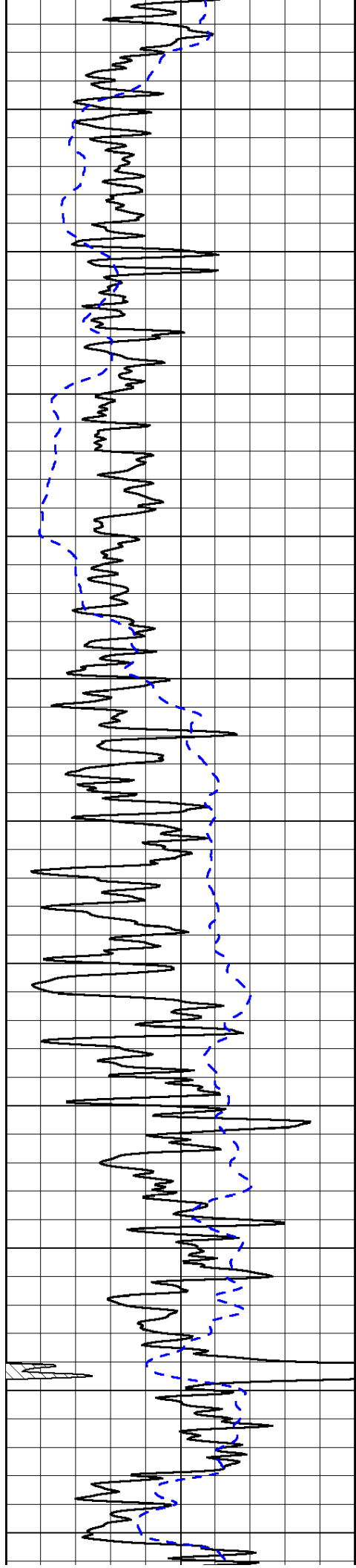
1000	Conductivity	0
15000	Line Tension	0

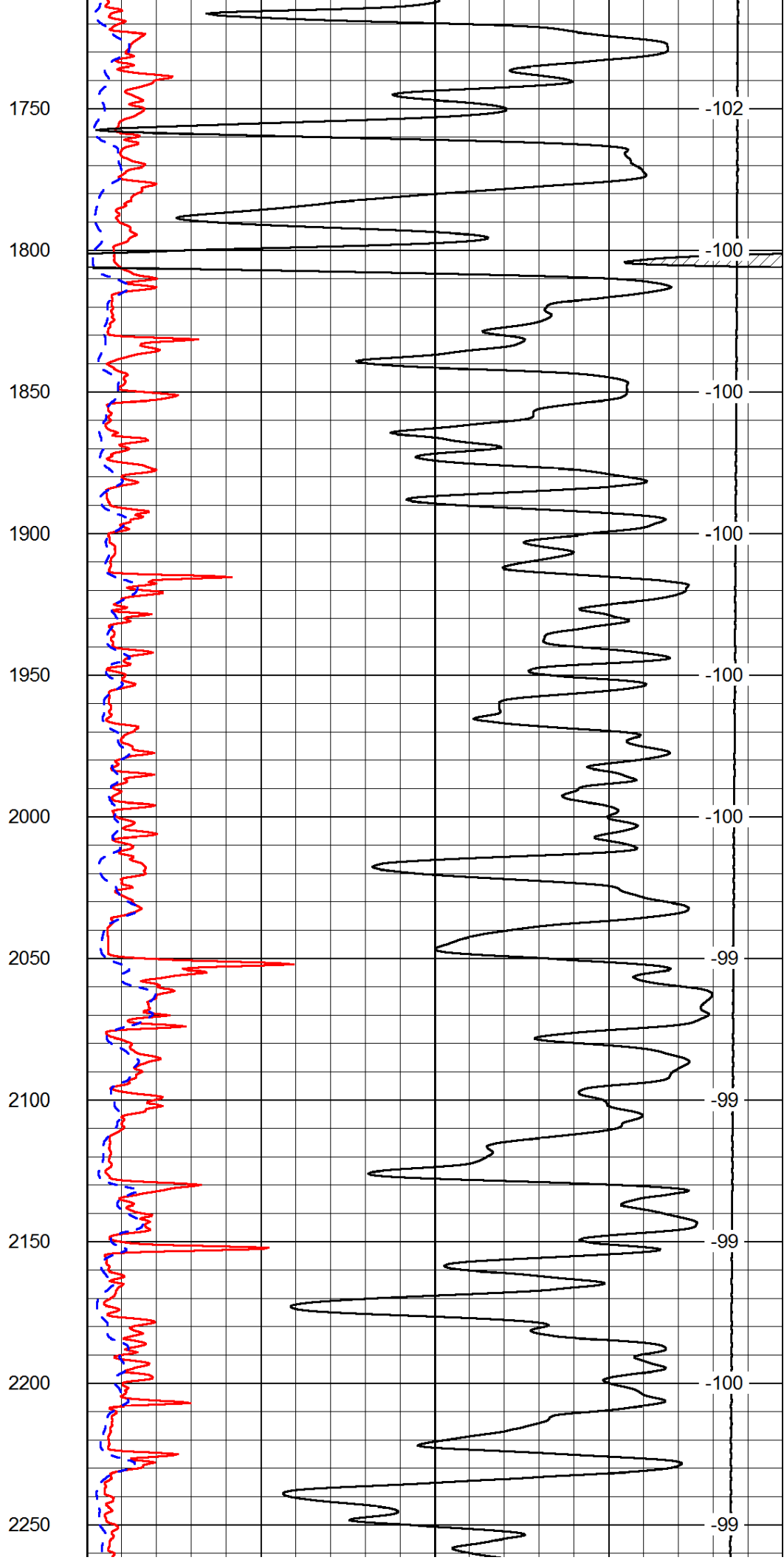
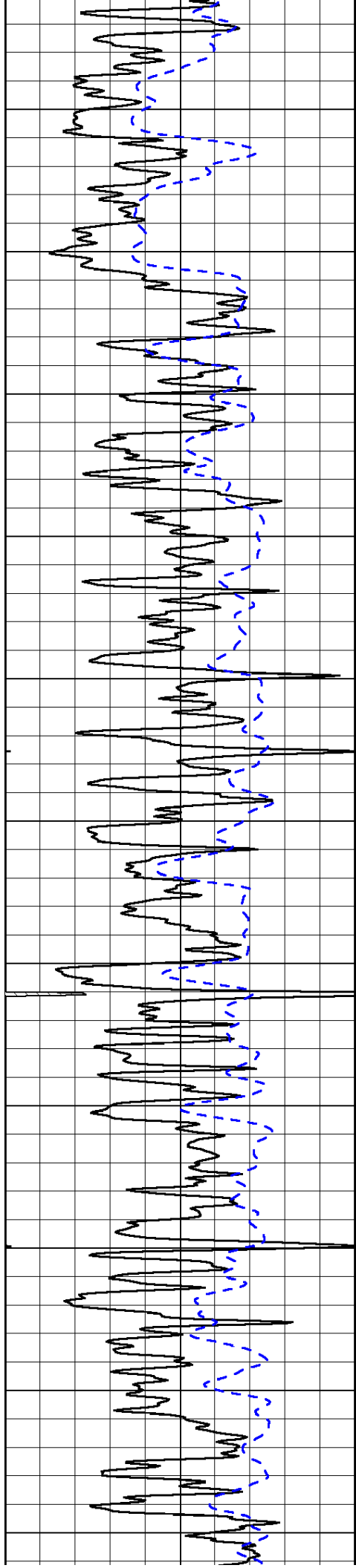
50	Shallow Resistivity	500
50	Deep Resistivity	500

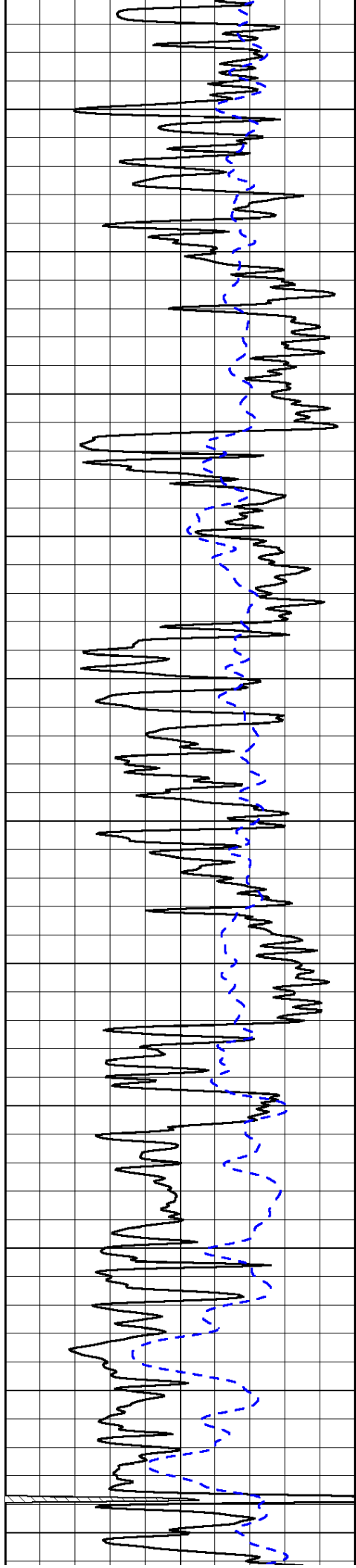


700
750
800
850
900
950
1000
1050
1100
1150

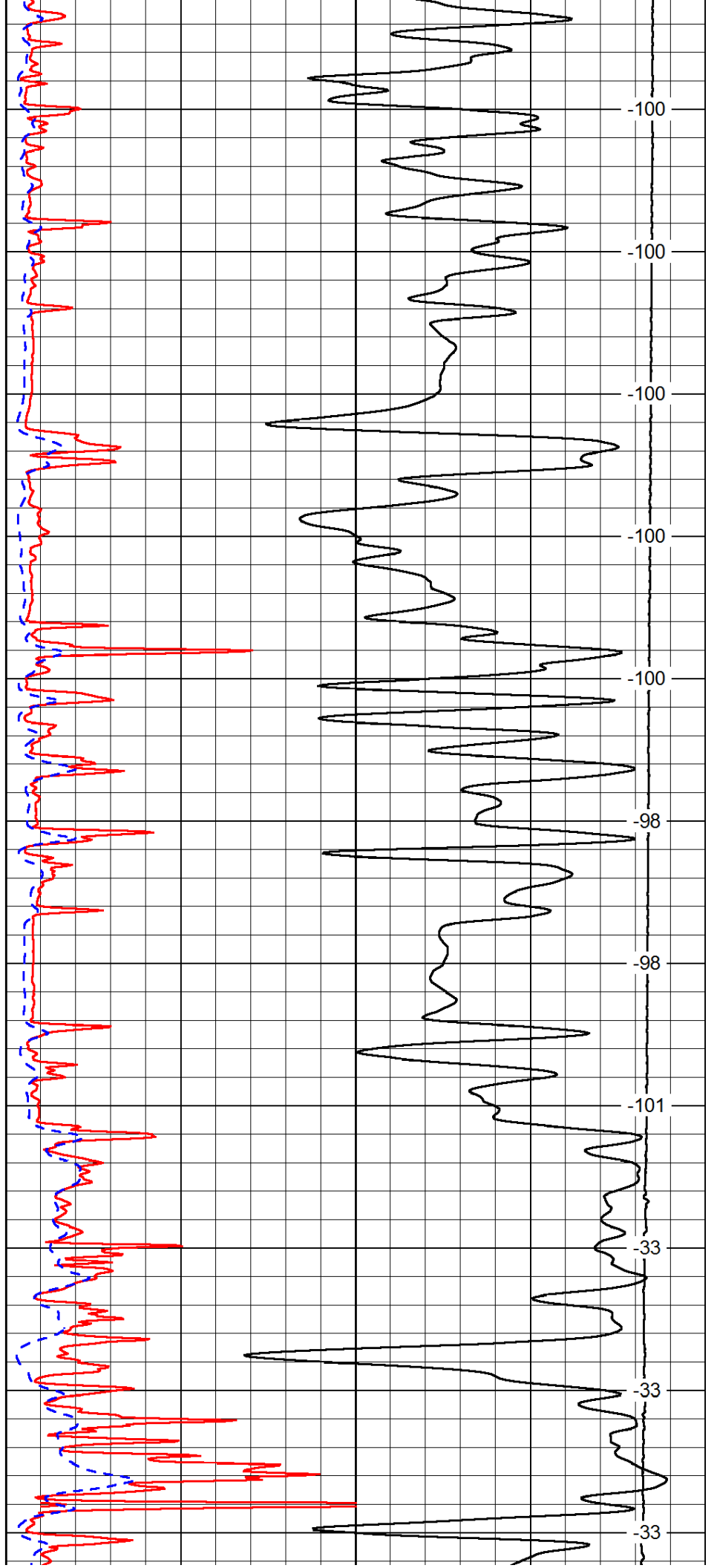
-36
-36
-38
-102
-101
-101
-99
-99
-99
-99



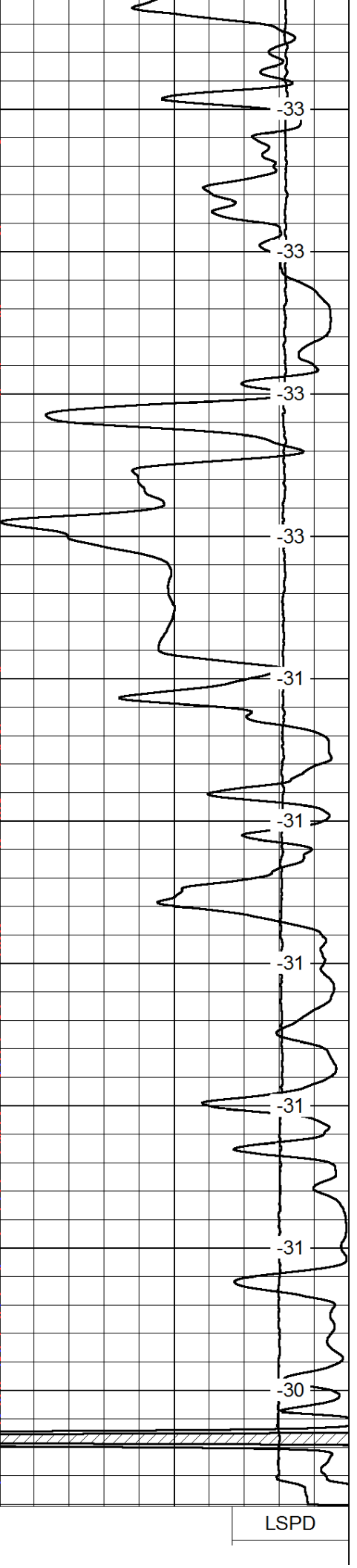
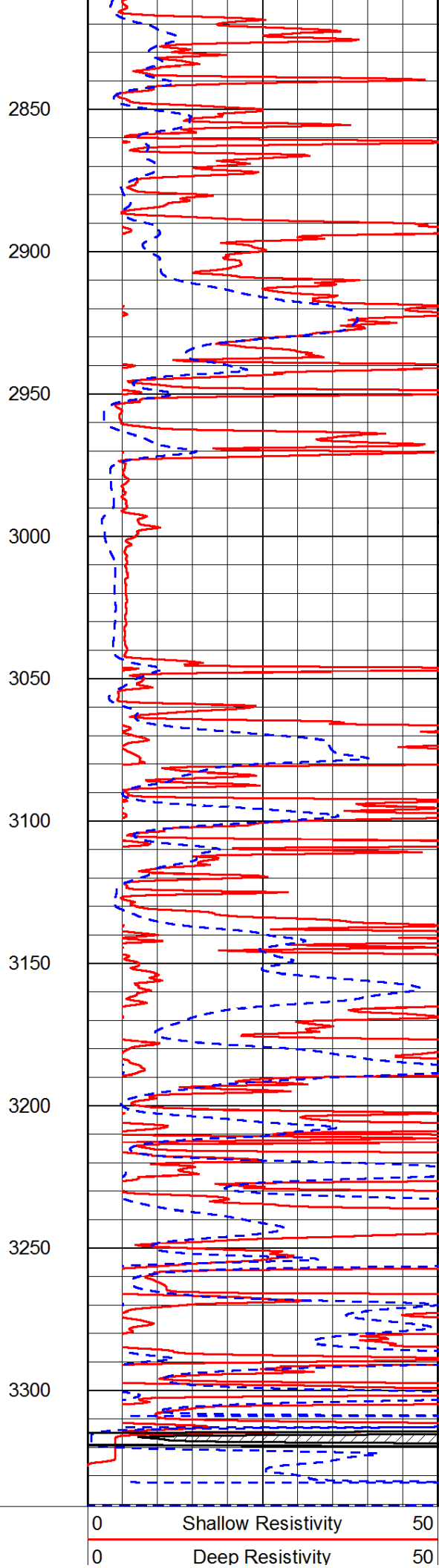
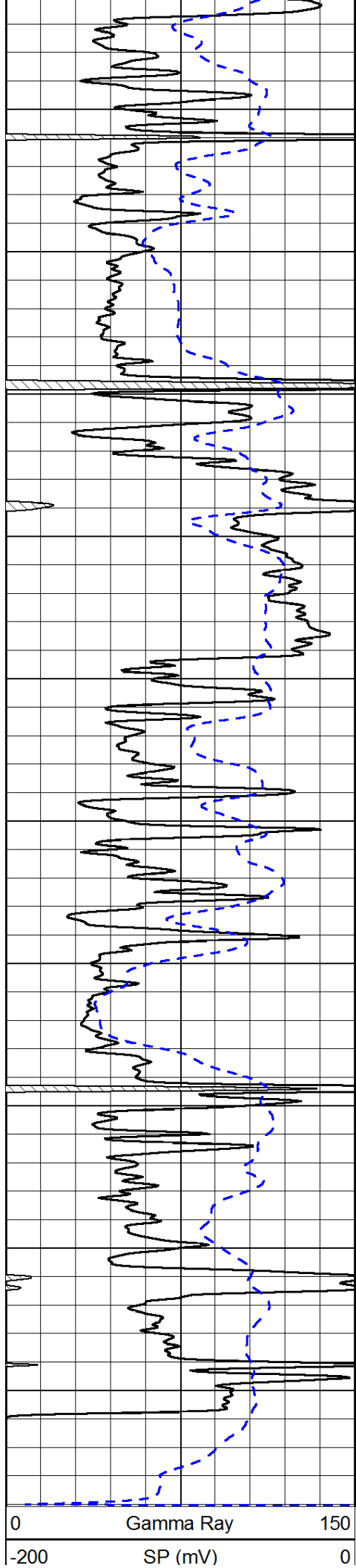




2300
2350
2400
2450
2500
2550
2600
2650
2700
2750
2800



-100
-100
-100
-100
-100
-98
-98
-101
-33
-33
-33



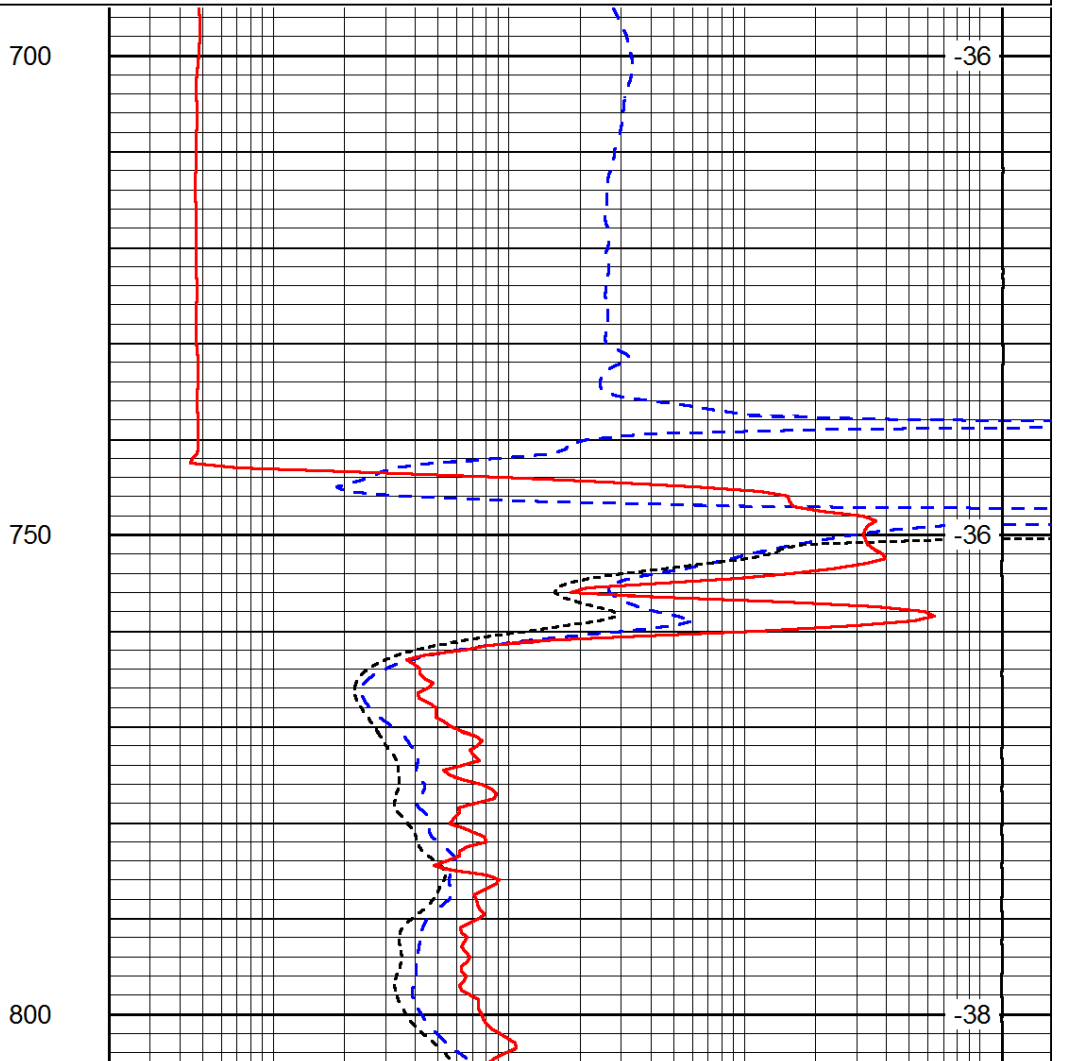
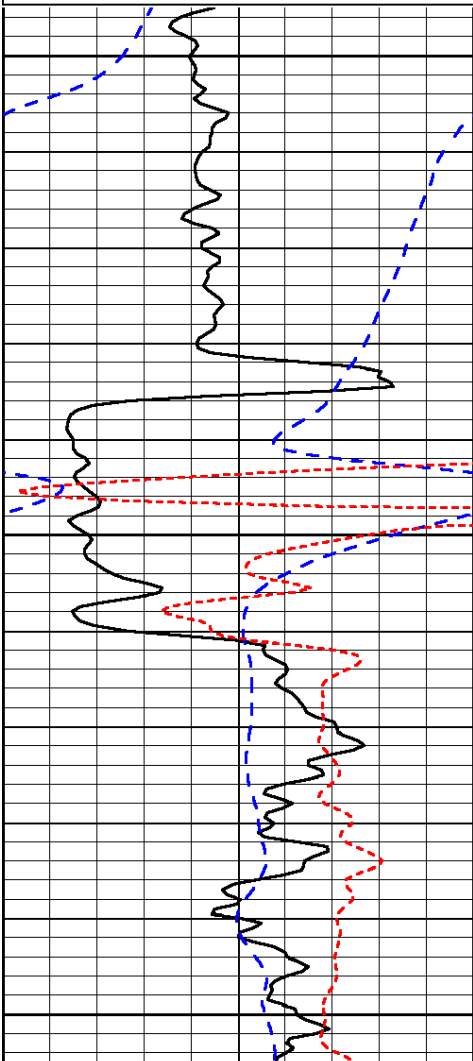
1000	Conductivity	0
15000	Line Tension	0
50	Shallow Resistivity	500
50	Deep Resistivity	500

Database File: c:\warrior\data\john r evans_zorn 'b' #3\johnroyevans_zorn_b_3hd.db
 Dataset Pathname: dil/johnstck
 Presentation Format: dil
 Dataset Creation: Sat Dec 01 13:22:35 2012
 Charted by: Depth in Feet scaled 1:240

0	Gamma Ray	150
-200	SP (mV)	0
-160	RxoRt	40

0.2	Deep Resistivity	2000
0.2	Medium Resistivity	2000
0.2	Shallow Resistivity	2000
15000	Line Tension	0

LSPD



0	Gamma Ray	150
-200	SP (mV)	0
-160	RxoRt	40

0.2	Deep Resistivity	2000
0.2	Medium Resistivity	2000
0.2	Shallow Resistivity	2000
15000	Line Tension	0

LSPD

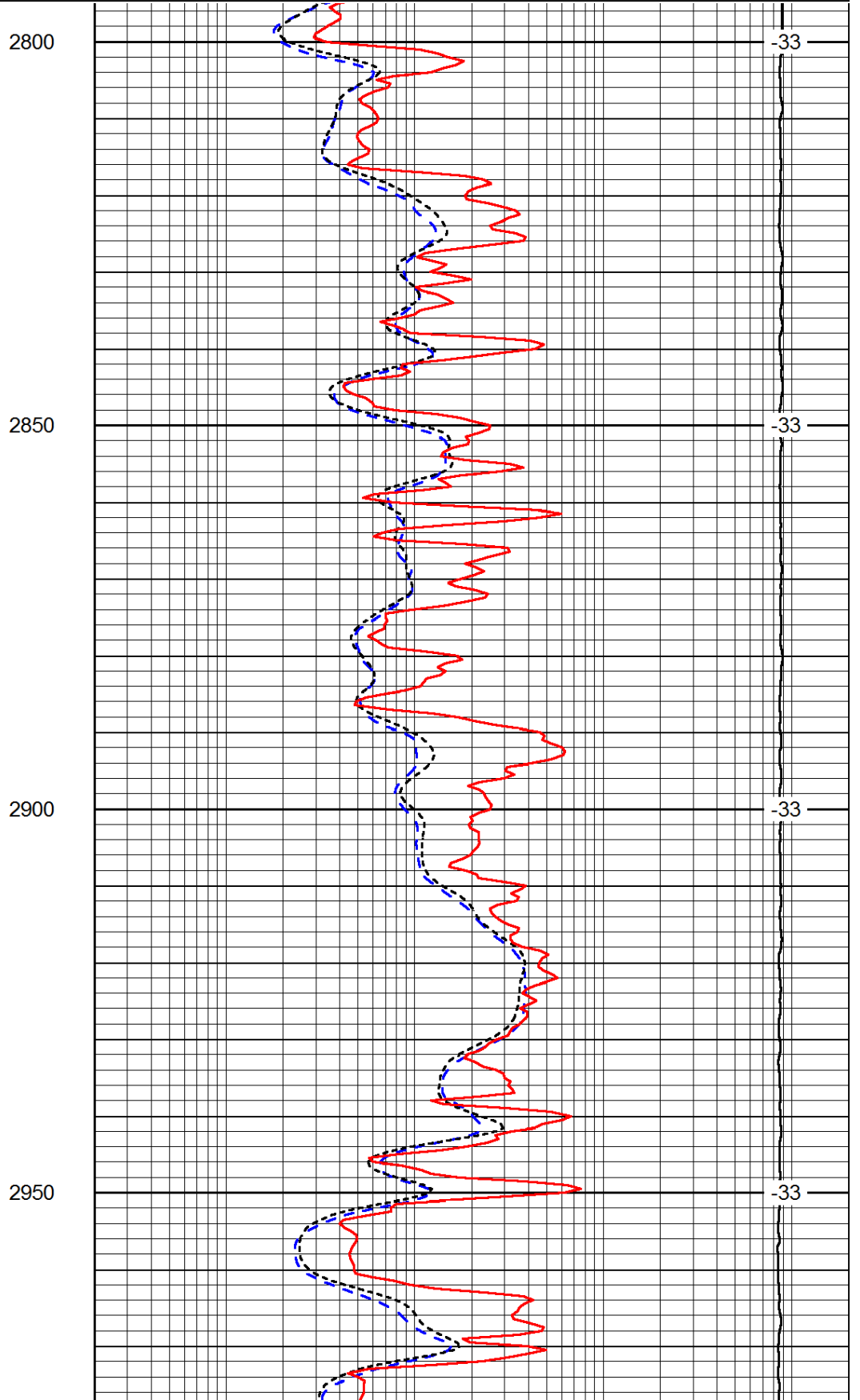
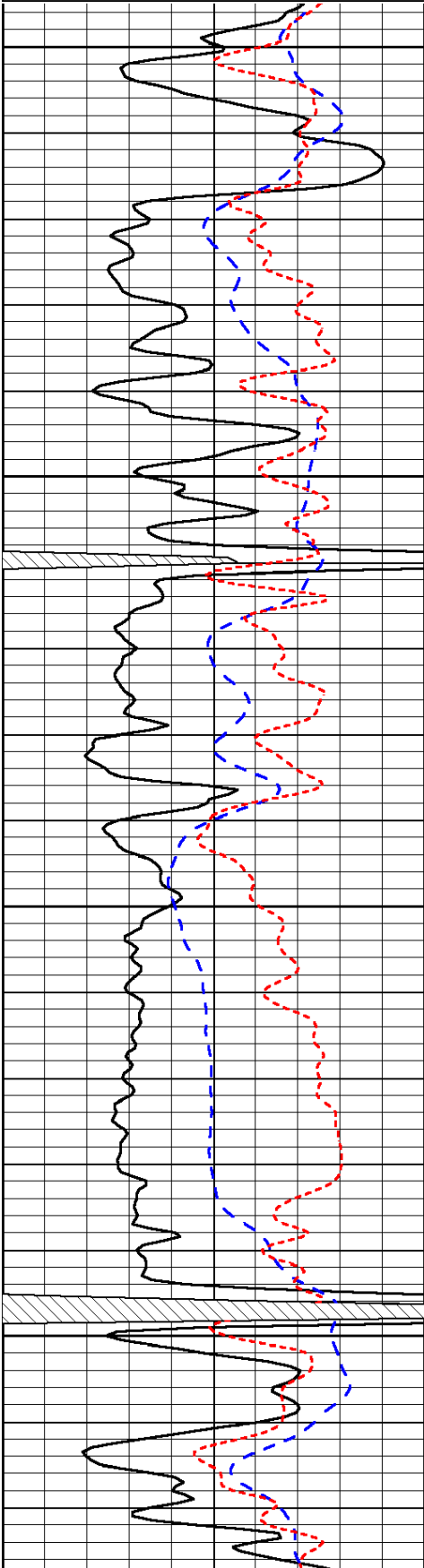
Database File: c:\warrior\data\john r evans_zorn 'b' #3\johnroyevans_zorn_b_3hd.db
 Dataset Pathname: dil/johnstck

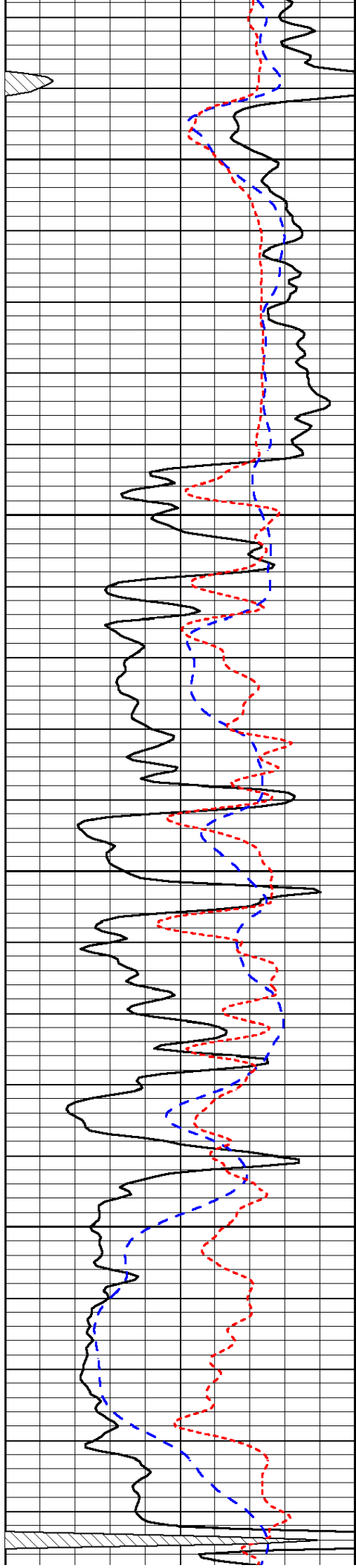
Presentation Format: dil
 Dataset Creation: Sat Dec 01 13:22:35 2012
 Charted by: Depth in Feet scaled 1:240

0	Gamma Ray	150
-200	SP (mV)	0
-160	RxoRt	40

0.2	Deep Resistivity	2000
0.2	Medium Resistivity	2000
0.2	Shallow Resistivity	2000
15000	Line Tension	0

LSPD



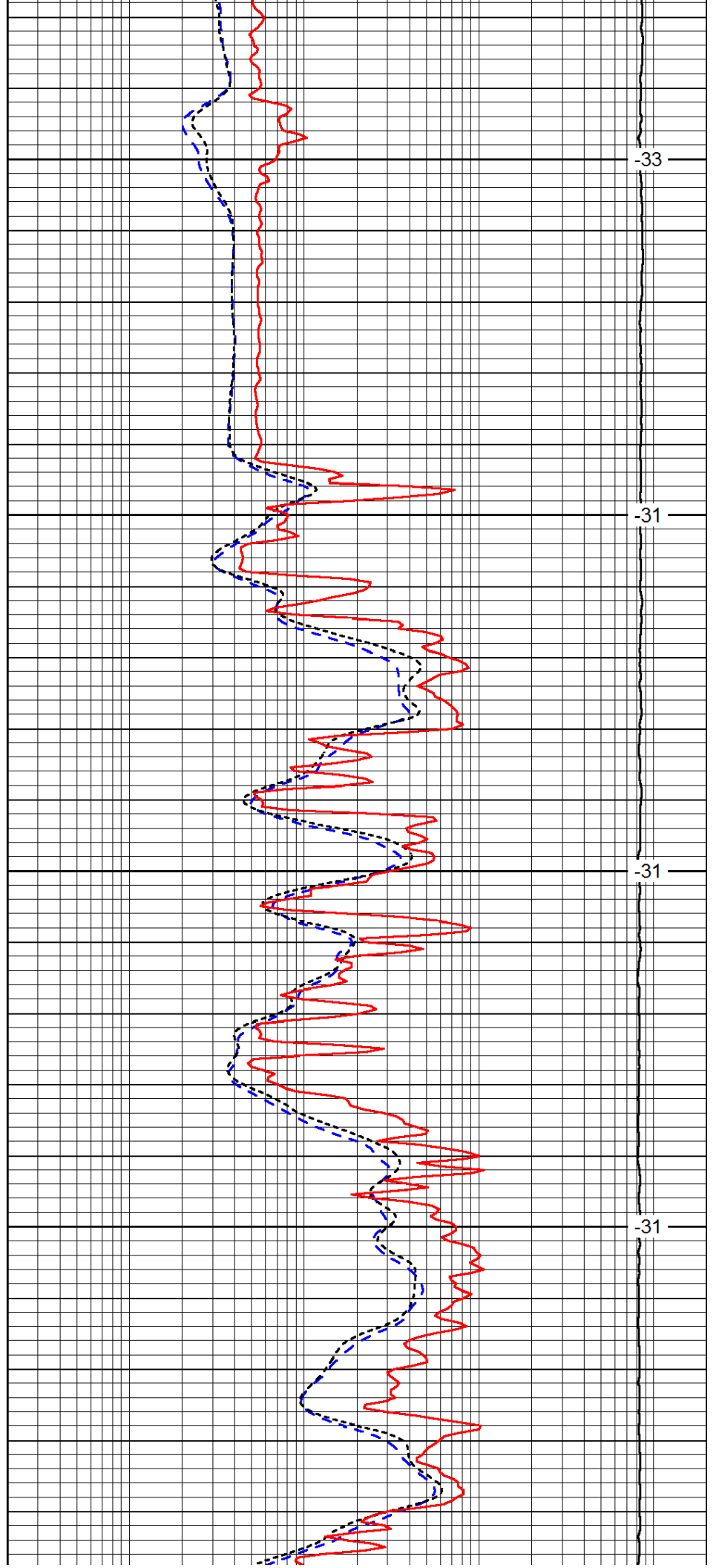


3000

3050

3100

3150

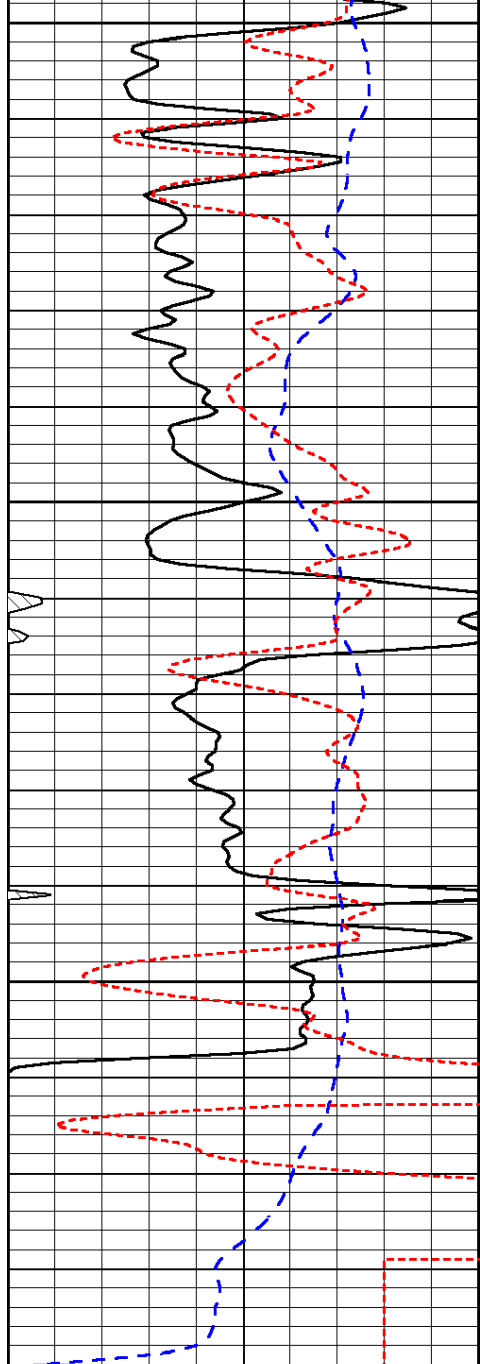


-33

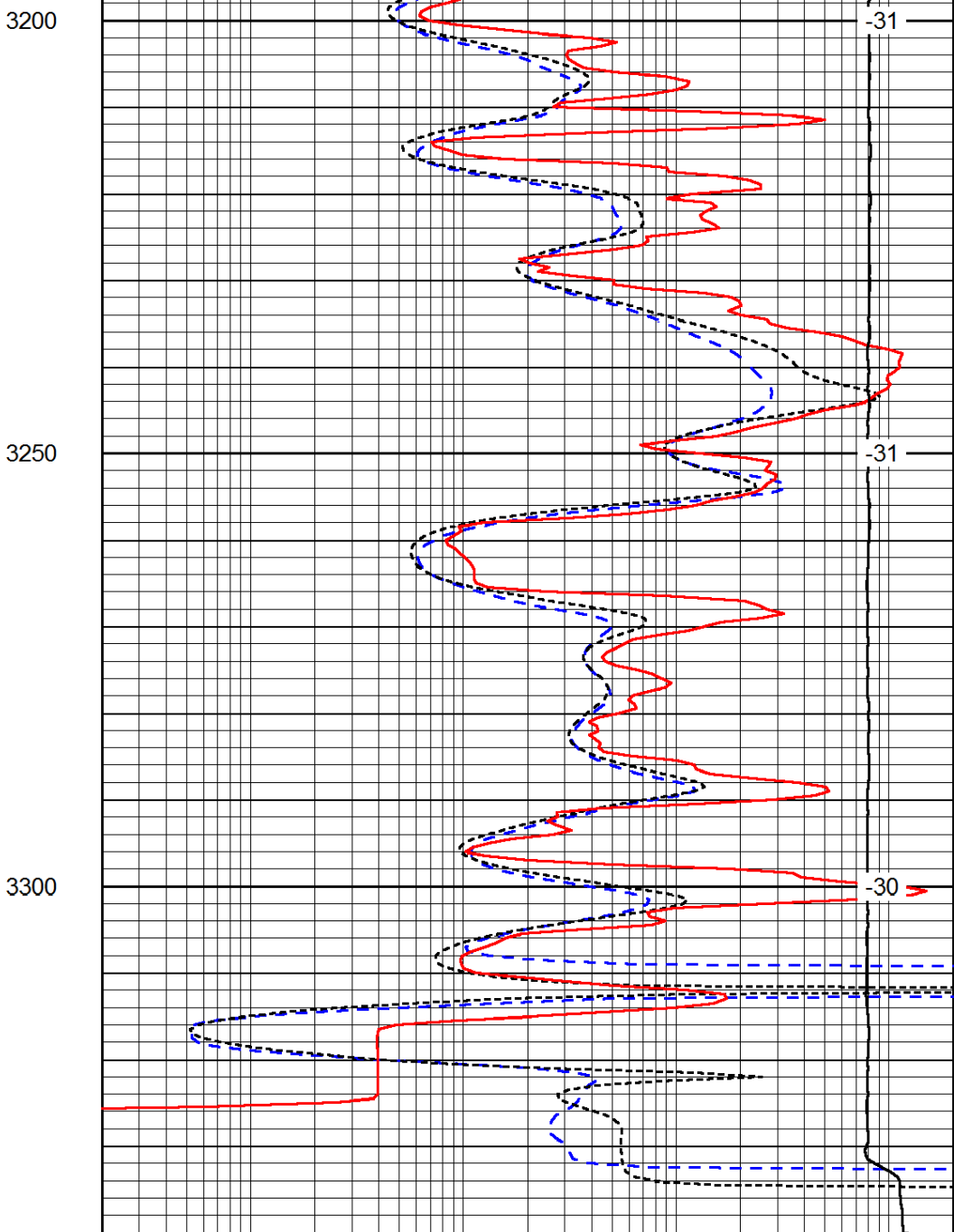
-31

-31

-31



0	Gamma Ray	150
-200	SP (mV)	0
-160	RxoRt	40



0.2	Deep Resistivity	2000
0.2	Medium Resistivity	2000
0.2	Shallow Resistivity	2000
15000	Line Tension	0

LSPD