



Pioneer Energy Services

## Dual Compensated Porosity Log

15-009-25,786-00-00

API No.

Company **John Roy Evans Oil Company, LLC**  
 Well **Zorn "B" #3**  
 Field **Demel**  
 County **Barton** State **Kansas**

Location **SW NE NE NW  
520' FNL & 3,285' FEL**  
 Sec: **6** Twp: **17S** Rge: **11W**

Other Services  
DIL  
MEL

Elevation  
K.B. 1879  
D.F. 1866  
G.L. 1866

Date	12/1/2012
Run Number	One
Type Log	CNL / CDL
Depth Driller	3337
Depth Logger	3332
Bottom Logged Interval	3311
Top Logged Interval	3800
Type Fluid In Hole	Chemical
Salinity, PPM CL	4800
Density Level	9.1
Level	Full
Max. Rec. Temp. F	109
Operating Rig Time	4 Hours
Equipment -- Location	108 Hays
Recorded By	J. Long
Witnessed By	Josh Austin

Borehole Record				Casing Record			
Run No.	Bit	From	To	Size	Wgt.	From	To
1	12.25	00	745	8.625	24#	00	745
2	7.875	754	3337				

<<< Fold Here >>>

All interpretations are opinions based on inferences from electrical or other measurements and we cannot and do not guarantee the accuracy or correctness of any interpretation, and we shall not, except in the case of gross or willful negligence on our part, be liable or responsible for any loss, costs, damages, or expenses incurred or sustained by anyone resulting from any interpretation made by any of our officers, agents or employees. These interpretations are also subject to our general terms and conditions set out in our current Price Schedule.

### Comments

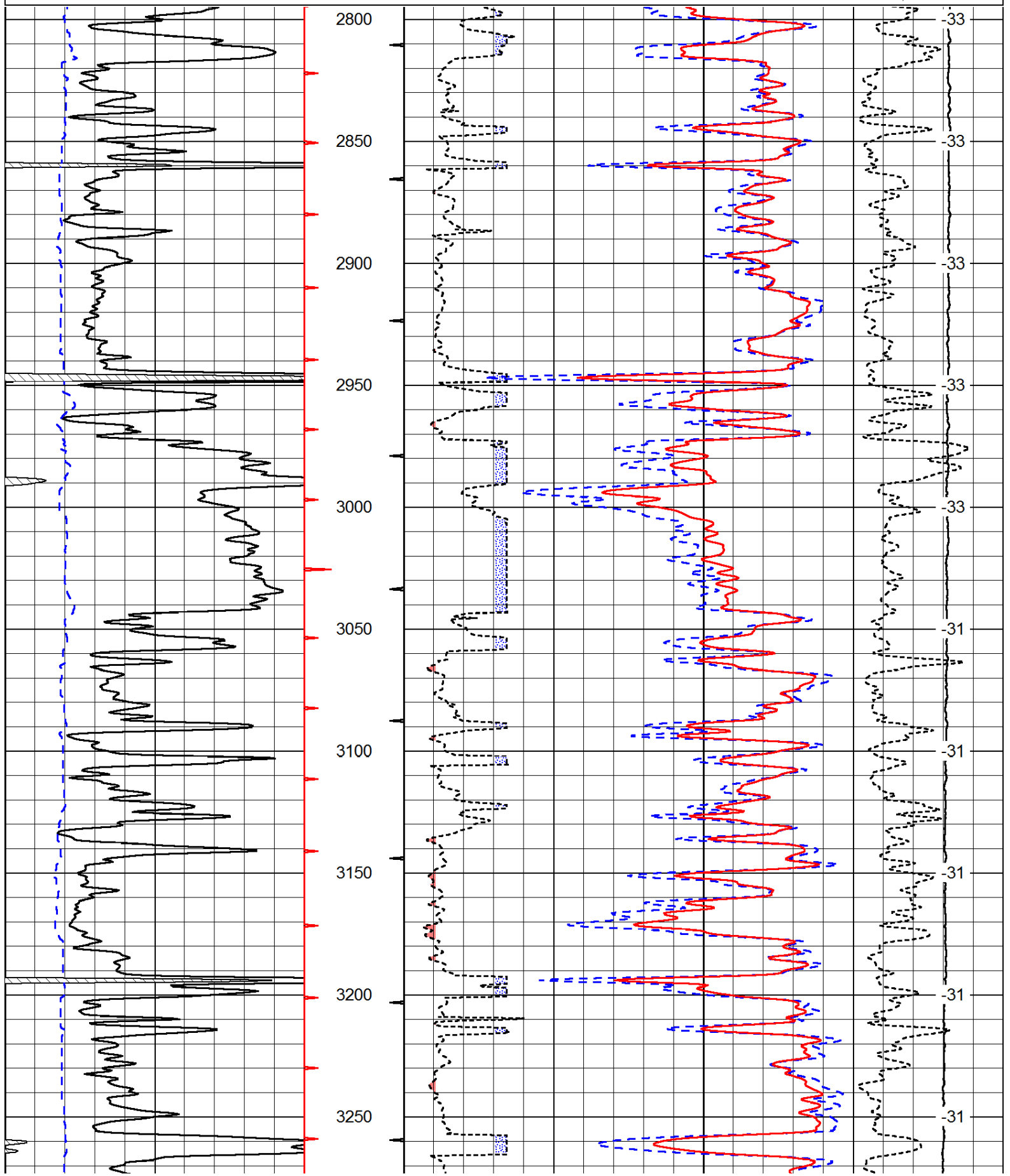
Thank you for using Pioneer Energy Services  
[www.pioneerenergy.com](http://www.pioneerenergy.com)  
 785 625 3858

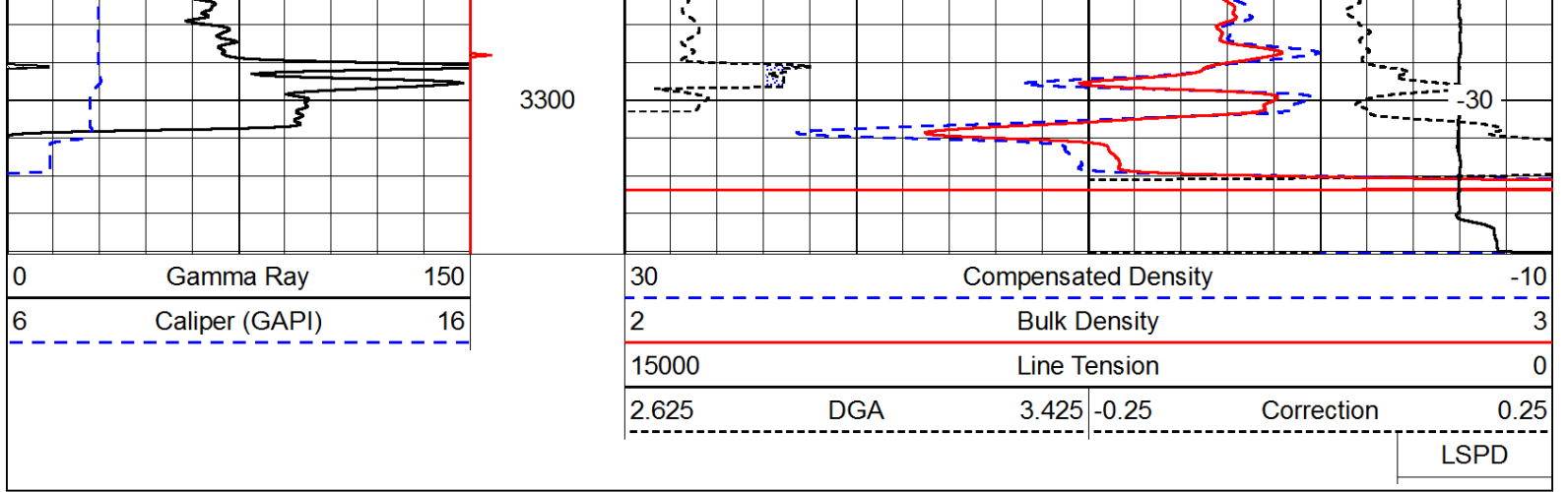
Claflin, 6 North, 2 3/4 West, South Into

Database File: c:\warrior\data\john r evans\_zorn 'b' #3\johnroyevans\_zorn\_b\_3hd.db  
 Dataset Pathname: dil/johnstck  
 Presentation Format: cdl  
 Dataset Creation: Sat Dec 01 13:22:35 2012  
 Charted by: Depth in Feet scaled 1:600

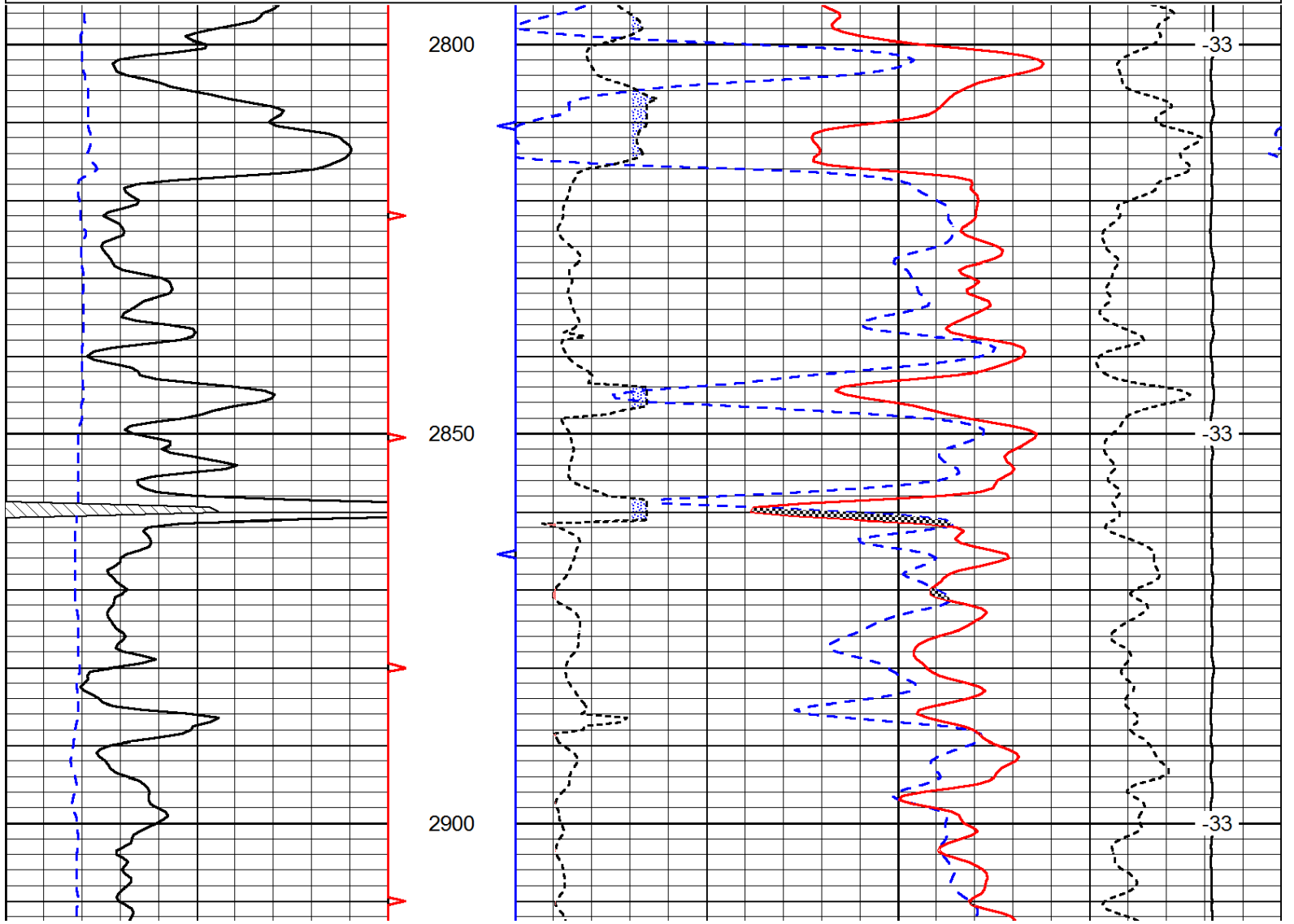
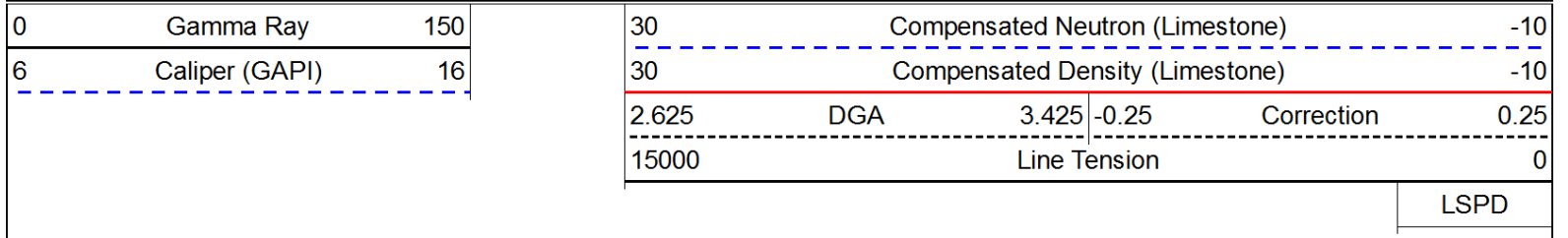
0	Gamma Ray	150
6	Caliper (GAPI)	16

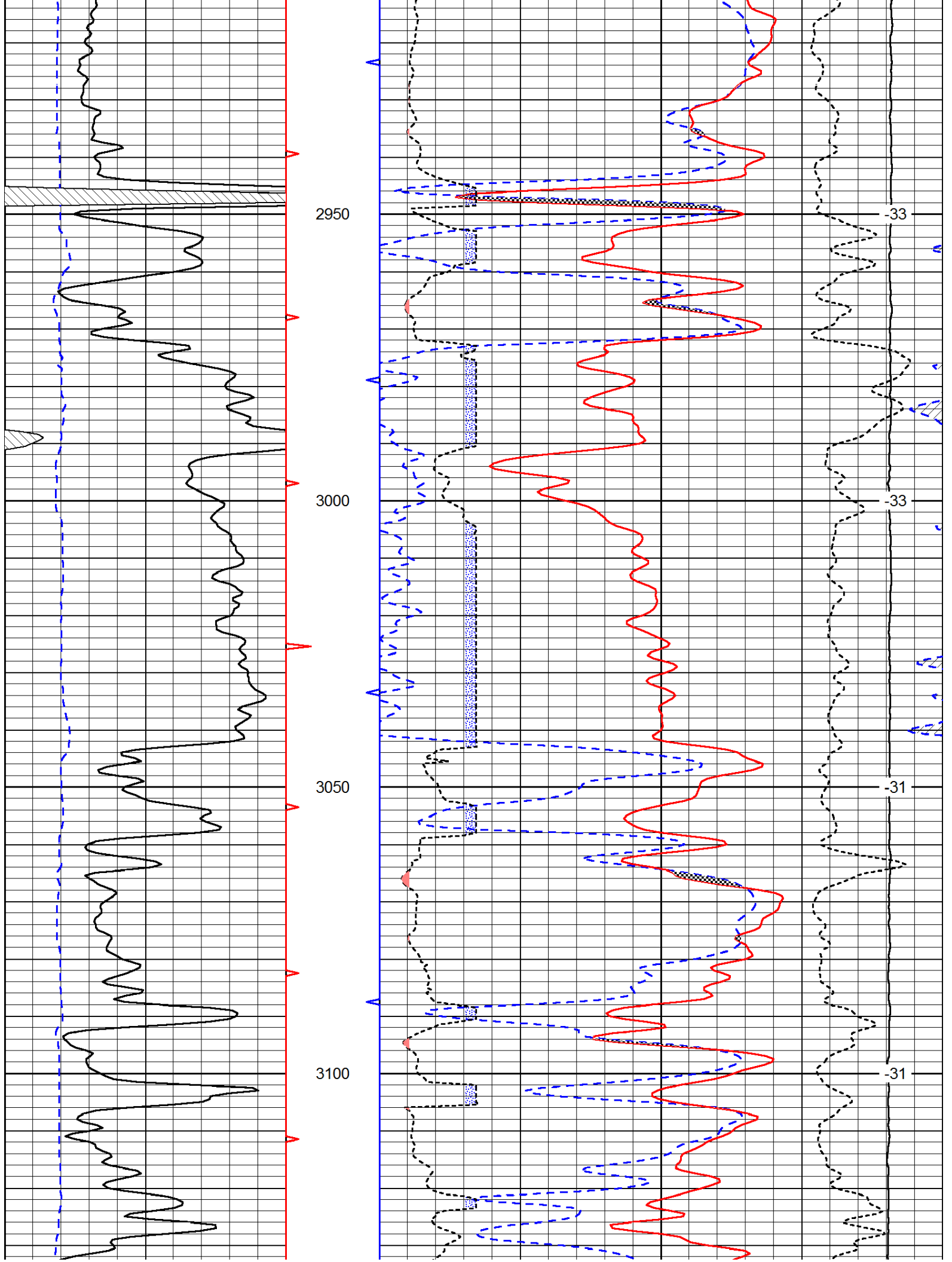
30	Compensated Density		-10
2	Bulk Density		3
15000	Line Tension		0
2.625	DGA	3.425	-0.25
		Correction	0.25
			LSPD

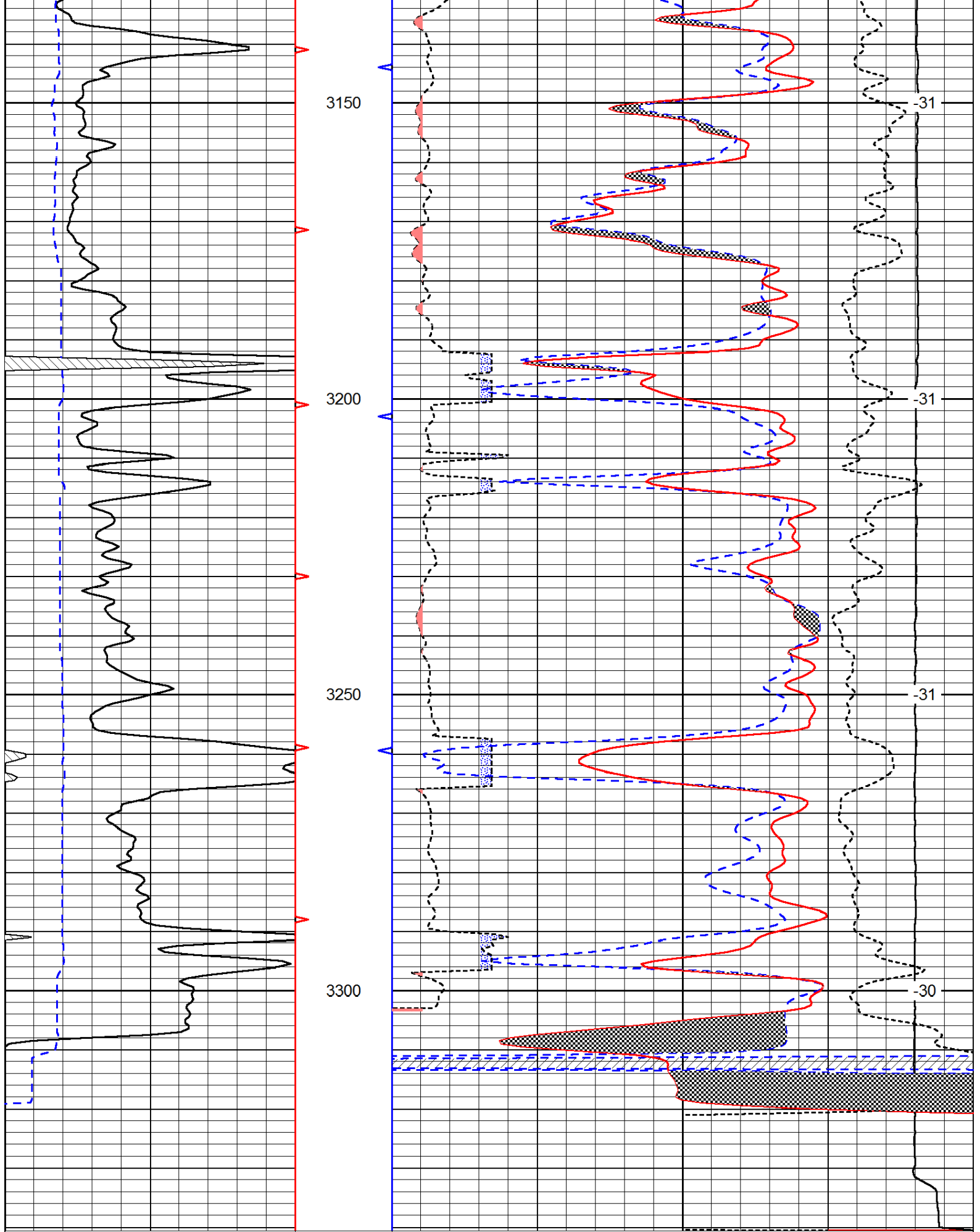




Database File: c:\warrior\data\john r evans\_zorn 'b' #3\johnroyevans\_zorn\_b\_3hd.db  
 Dataset Pathname: dil/johnstck  
 Presentation Format: cndlspec  
 Dataset Creation: Sat Dec 01 13:22:35 2012  
 Charted by: Depth in Feet scaled 1:240







0	Gamma Ray	150
6	Caliper (GAPI)	16

30	Compensated Neutron (Limestone)	-10
30	Compensated Density (Limestone)	-10
2.625	DCA	0.25
3.425	Correction	0.25

2.025	DCA	3.425	-0.25	Correction	0.25
15000		Line Tension			0
				LSPD	