



Pioneer Energy Services

Microresistivity Log

15-009-25,786-00-00

API No.

Company John Roy Evans Oil Company, LLC

Well Zorn "B" #3

Field Demel

County Barton

State

Kansas

Location

SW NE NE NW
520' FNL & 3,285' FEL

Sec: 6

Twp: 17S

Rge: 11W

Elevation

K.B. 1879
D.F. 1866
G.L. 1866

Permanent Datum Ground Level

13 Ft. Above Perm. Datum

Log Measured From Kelly Bushing

Drilling Measured From Kelly Bushing

12/1/2012

Two

Run Number

3337

Depth Driller

3332

Bottom Logged Interval

3331

Top Log Interval

2800

Casing Driller

8.625 @ 745

Casing Logger

741

Bit Size

7.875

Type Fluid in Hole

Chemical

Salinity, ppm CL

4800

Density / Viscosity

9.1 52

pH / Fluid Loss

10.0 7.2

Source of Sample

Flowline

Rm @ Meas. Temp

1.20 @ 70

Rmf @ Meas. Temp

.90 @ 70

Rmc @ Meas. Temp

1.62 @ 70

Source of Rmf / Rmc

Charts

Rm @ BHT

.77 @ 109

Operating Rig Time

4 Hours

Max Rec. Temp. F

109

Equipment Number

108

Location

Hays

Recorded By

J. Long

Witnessed By

Josh Austin

<<< Fold Here >>>

All interpretations are opinions based on inferences from electrical or other measurements and we cannot and do not guarantee the accuracy or correctness of any interpretation, and we shall not, except in the case of gross or willful negligence on our part, be liable or responsible for any loss, costs, damages, or expenses incurred or sustained by anyone resulting from any interpretation made by any of our officers, agents or employees. These interpretations are also subject to our general terms and conditions set out in our current Price Schedule.

Comments

Thank you for using Pioneer Energy Services
www.pioneerenergy.com
785 625 3858

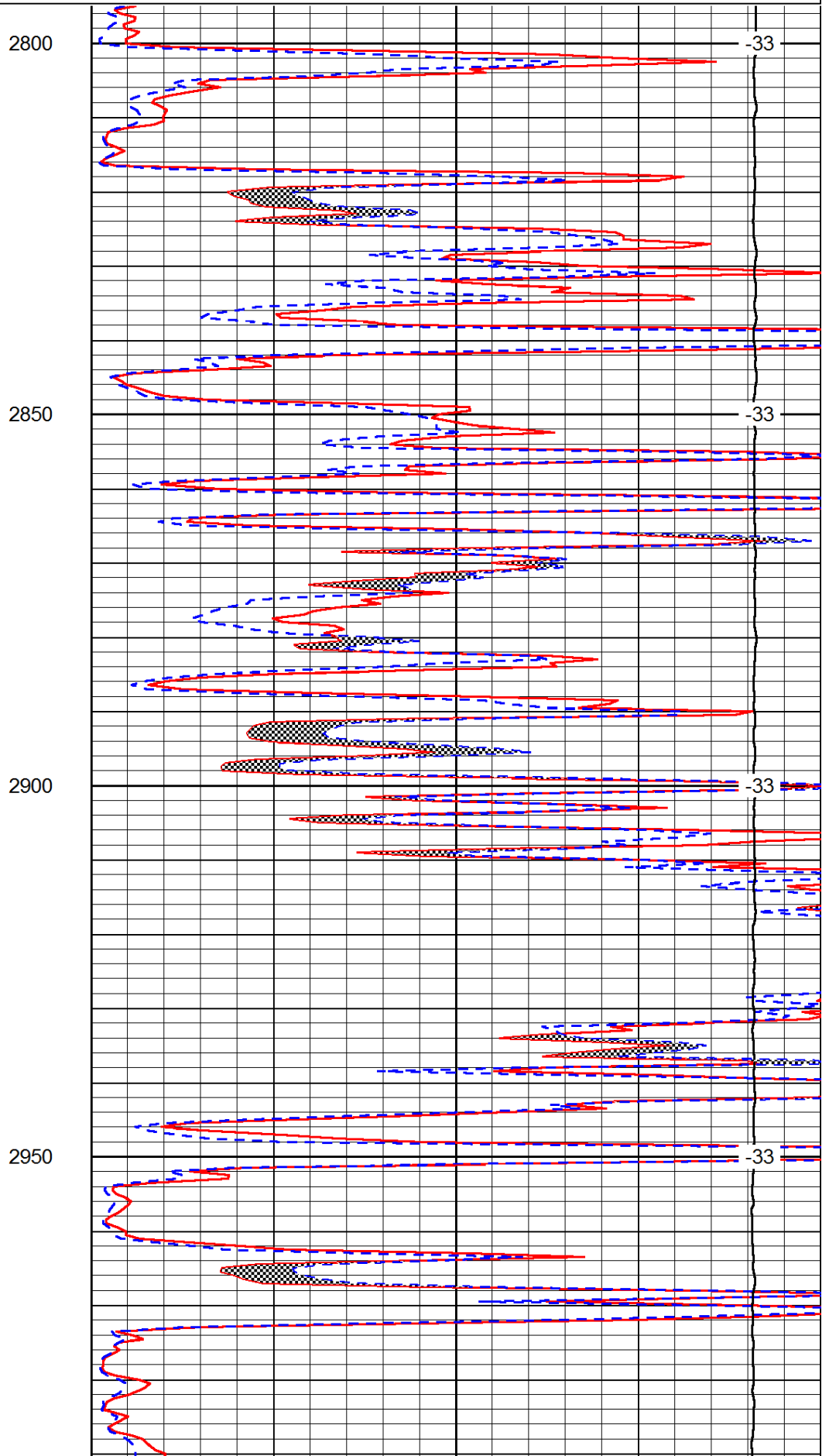
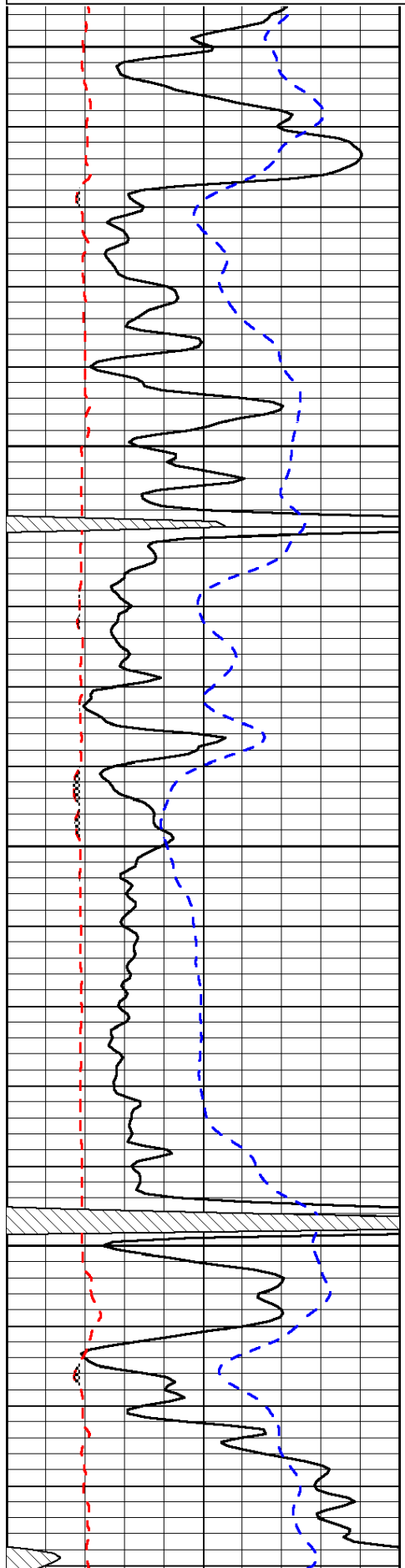
Clafflin, 6 North, 2 3/4 West, South Into

Database File: c:\warrior\data\john r evans_zorn 'b' #3\johnroyevans_zorn_b_3hd.db
Dataset Pathname: dil/johnstck
Presentation Format: micro
Dataset Creation: Sat Dec 01 13:22:35 2012
Charted by: Depth in Feet scaled 1:240

0	Gamma Ray	150
6	Micro Log Caliper (GAPI)	16
-200	SP (mV)	0

0	Micro Inverse 1 X 1	40
0	Micro Normal 2"	40
15000	Line Weight	0

LSPD



2800

-33

2850

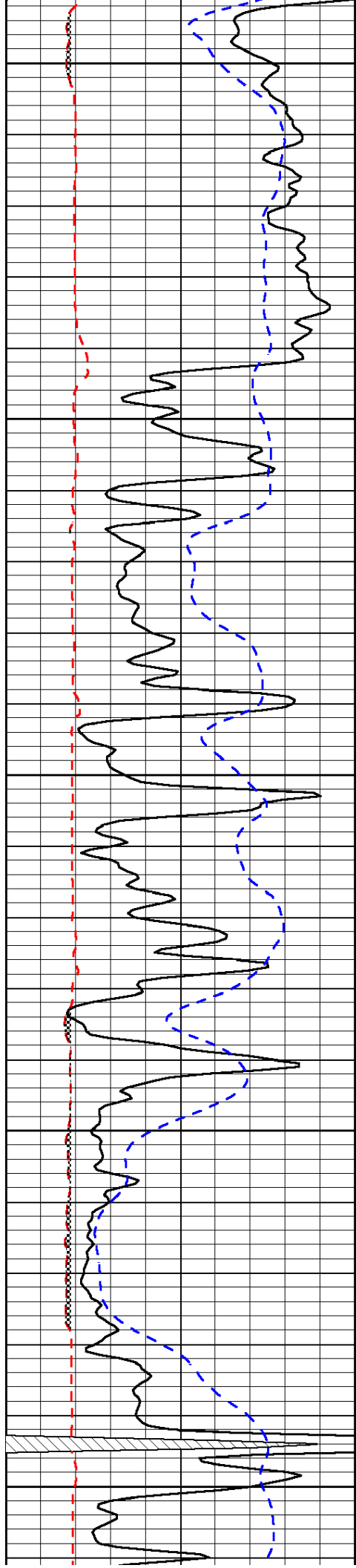
-33

2900

-33

2950

-33



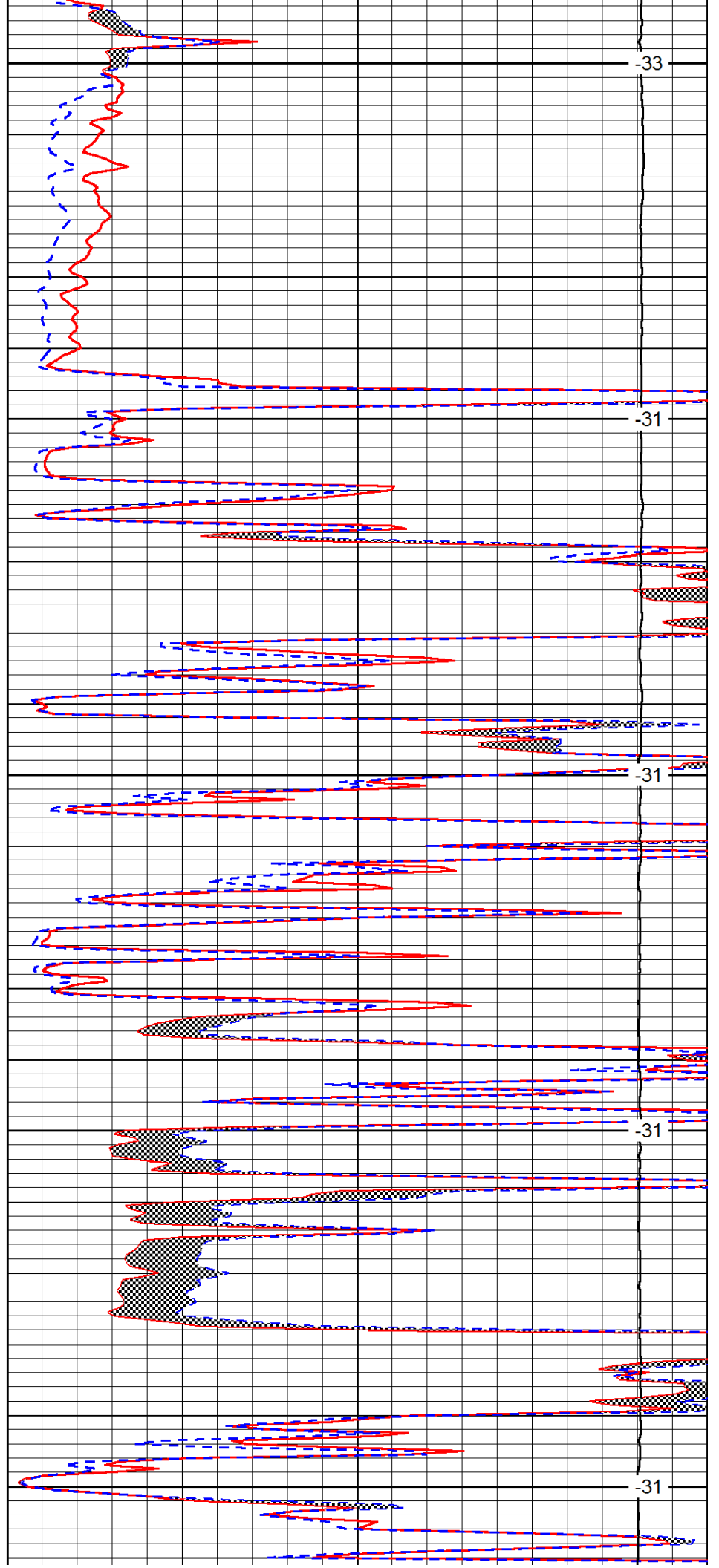
3000

3050

3100

3150

3200



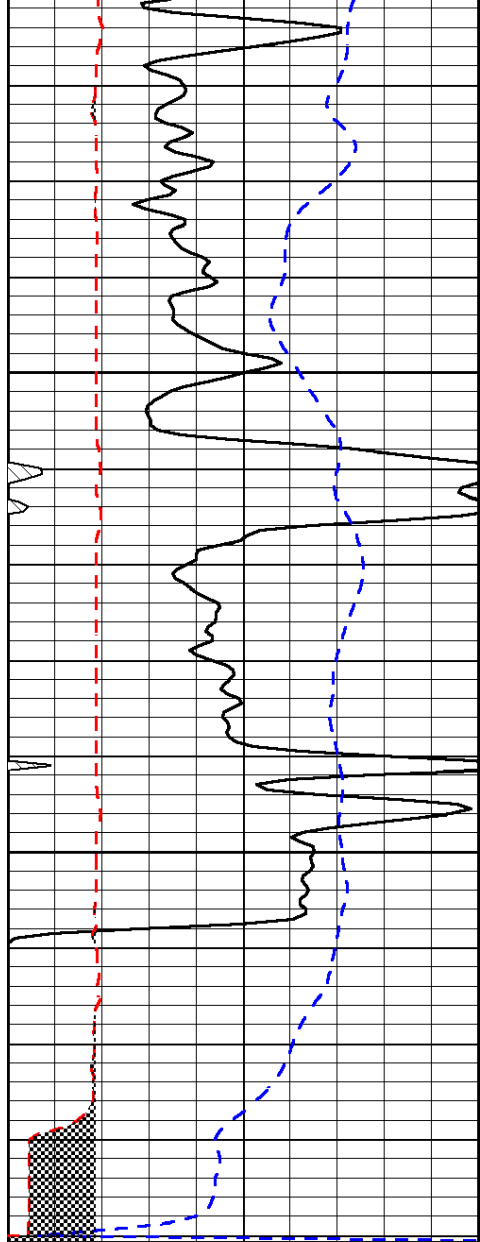
-33

-31

-31

-31

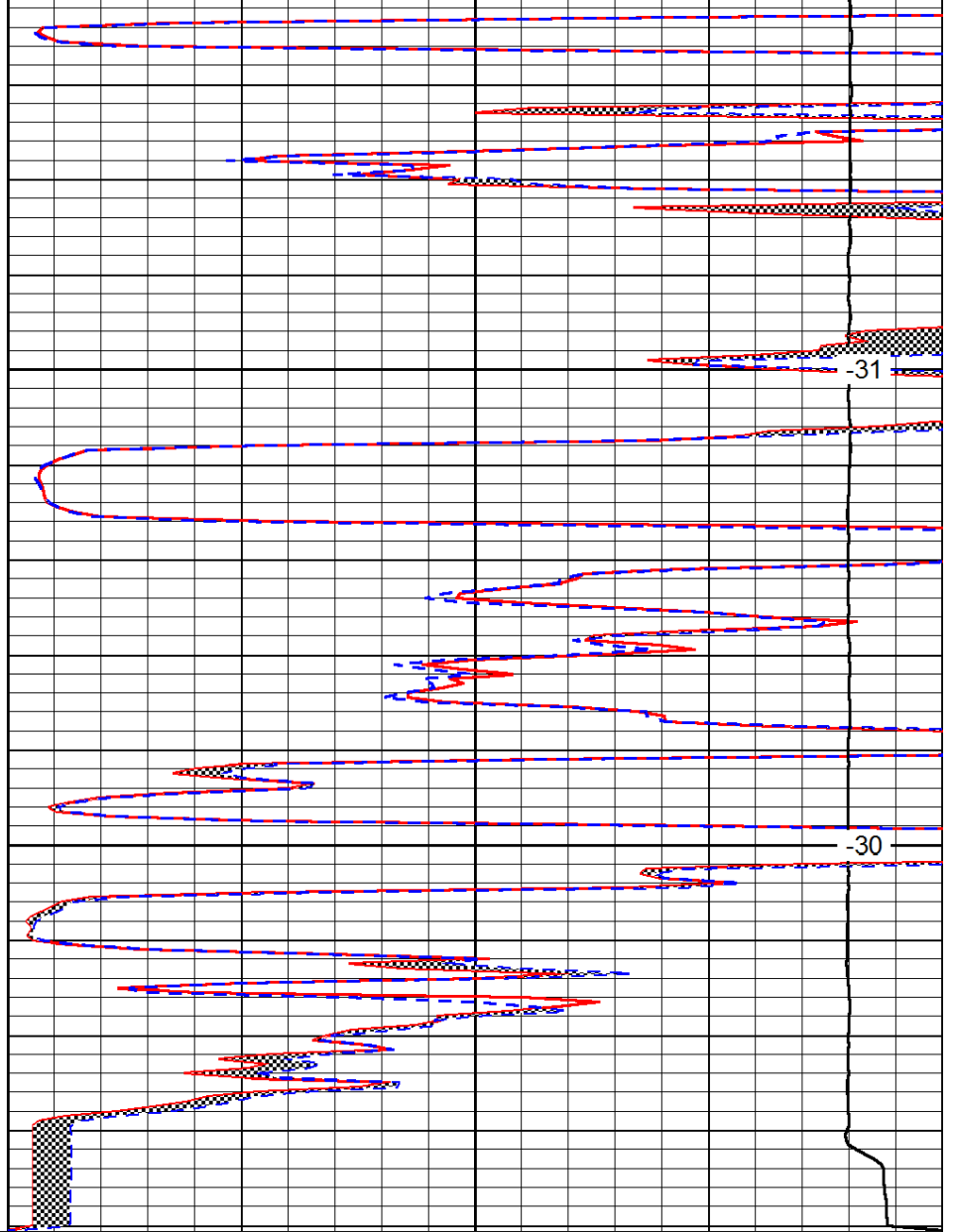
-31



0	Gamma Ray	150
6	Micro Log Caliper (GAPI)	16
-200	SP (mV)	0

3250

3300



0	Micro Inverse 1 X 1	40
0	Micro Normal 2''	40
15000	Line Weight	0

-31

-30

LSPD