



**SUPERIOR**  
Hays,  
Kansas

**MICRO**  
LOG

Company SHELBY, LLC.  
Well #1-3 WFYOG  
Field EVERS  
County PAWNEE  
State KANSAS

Company SHELBY, LLC.  
Well #1-3 WFYOG  
Field EVERS  
County PAWNEE  
State KANSAS

Location: 330' FNL & 1602' FEL  
API # : 15-145-21683-0000  
SEC 3 TWP 22S RGE 16W  
Permanent Datum GROUND LEVEL Elevation 1986  
Log Measured From KELLY BUSHING 9.5' A.G.L.  
Drilling Measured From KELLY BUSHING  
Elevation  
K.B. 1995.5  
D.F. 1993.5  
G.L. 1986

Date	9/8/12
Run Number	TWO
Depth Driller	3950
Depth Logger	3949
Bottom Logged Interval	3931
Top Log Interval	3050
Casing Driller	8 5/8" @ 1002
Casing Logger	1006
Bit Size	7 7/8
Type Fluid in Hole	CHEMICAL MUD
Density / Viscosity	9.0/54
pH / Fluid Loss	9.5/7.6
Source of Sample	FLOWLINE
Rim @ Meas. Temp	.60 @ 88F
Rmf @ Meas. Temp	.45 @ 88F
Rmc @ Meas. Temp	.72 @ 88F
Source of Rmf / Rmc	MEASURED
Rim @ BHT	.45 @ 115F
Time Circulation Stopped	2 HOURS
Time Logger on Bottom	
Maximum Recorded Temperature	115F
Equipment Number	680
Location	HAYS, KS.
Recorded By	JASON CAPPELLUCCI
Witnessed By	CHARLIE STURDAVANT

<<< Fold Here >>>

All interpretations are opinions based on inferences from electrical or other measurements and we cannot and do not guarantee the accuracy or correctness of any interpretation, and we shall not, except in the case of gross or willful negligence on our part, be liable or responsible for any loss, costs, damages, or expenses incurred or sustained by anyone resulting from any interpretation made by any of our officers, agents or employees. These interpretations are also subject to our general terms and conditions set out in our current Price Schedule.

**Comments**

THANK YOU FOR USING SUPERIOR WELL SERVICE (785) 628-6395  
DIRECTIONS  
LARNED, KS. - S. ON MAIN STREET - 2 BLOCKS PAST RR TRACKS  
2 E. ON 1ST ST. - S. & E. INTO

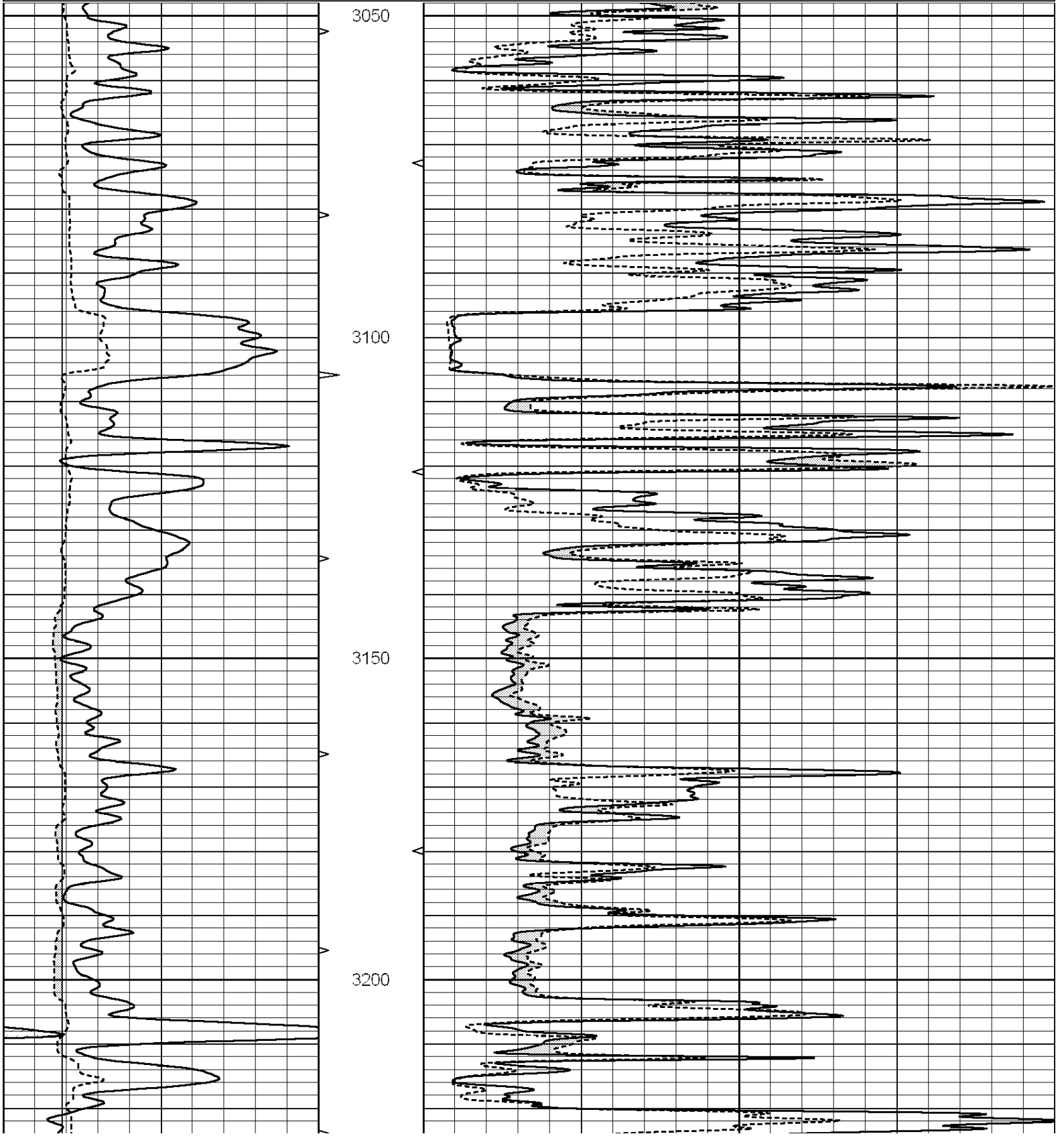


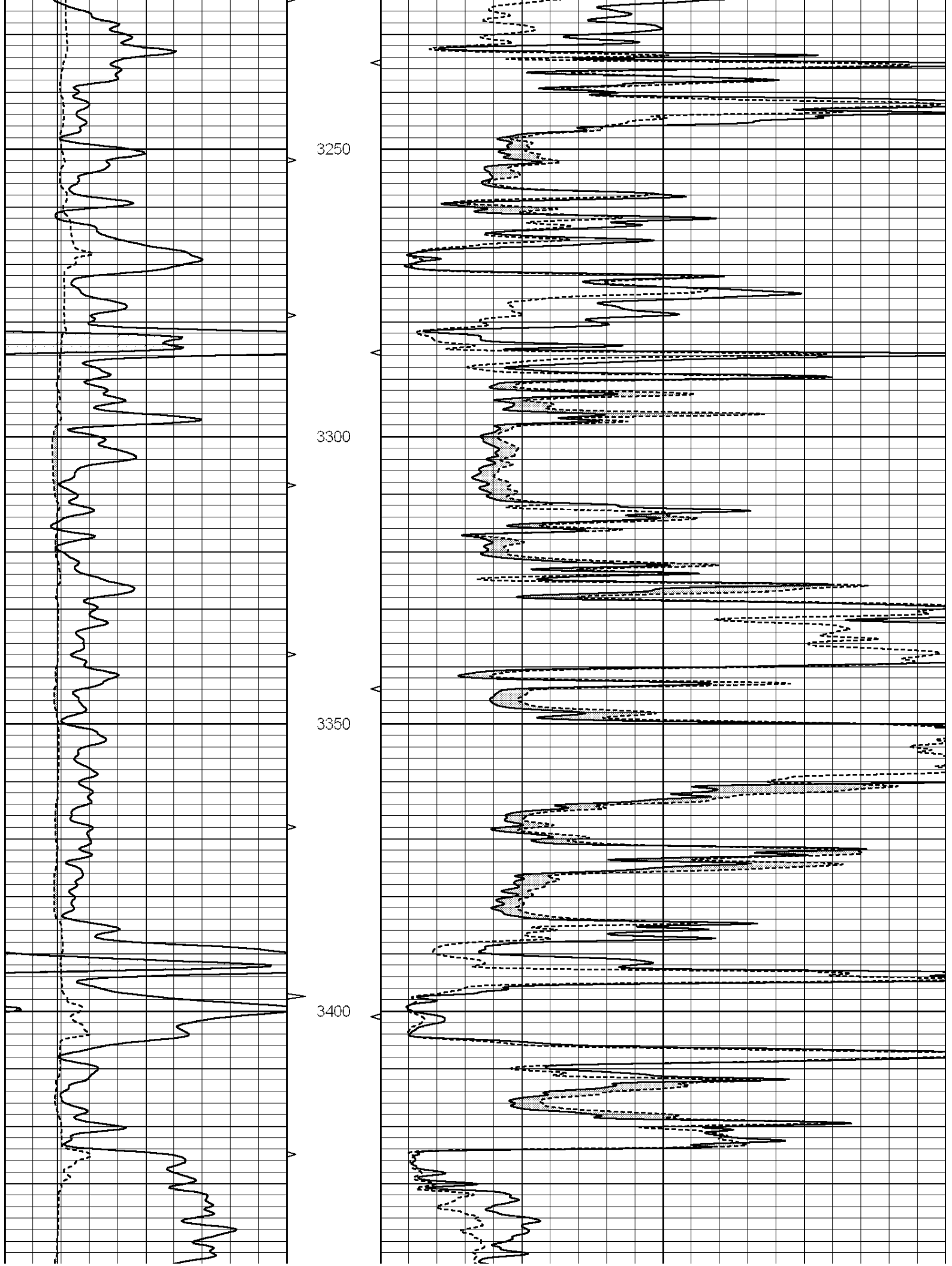
**SUPERIOR**  
Hays,  
Kansas

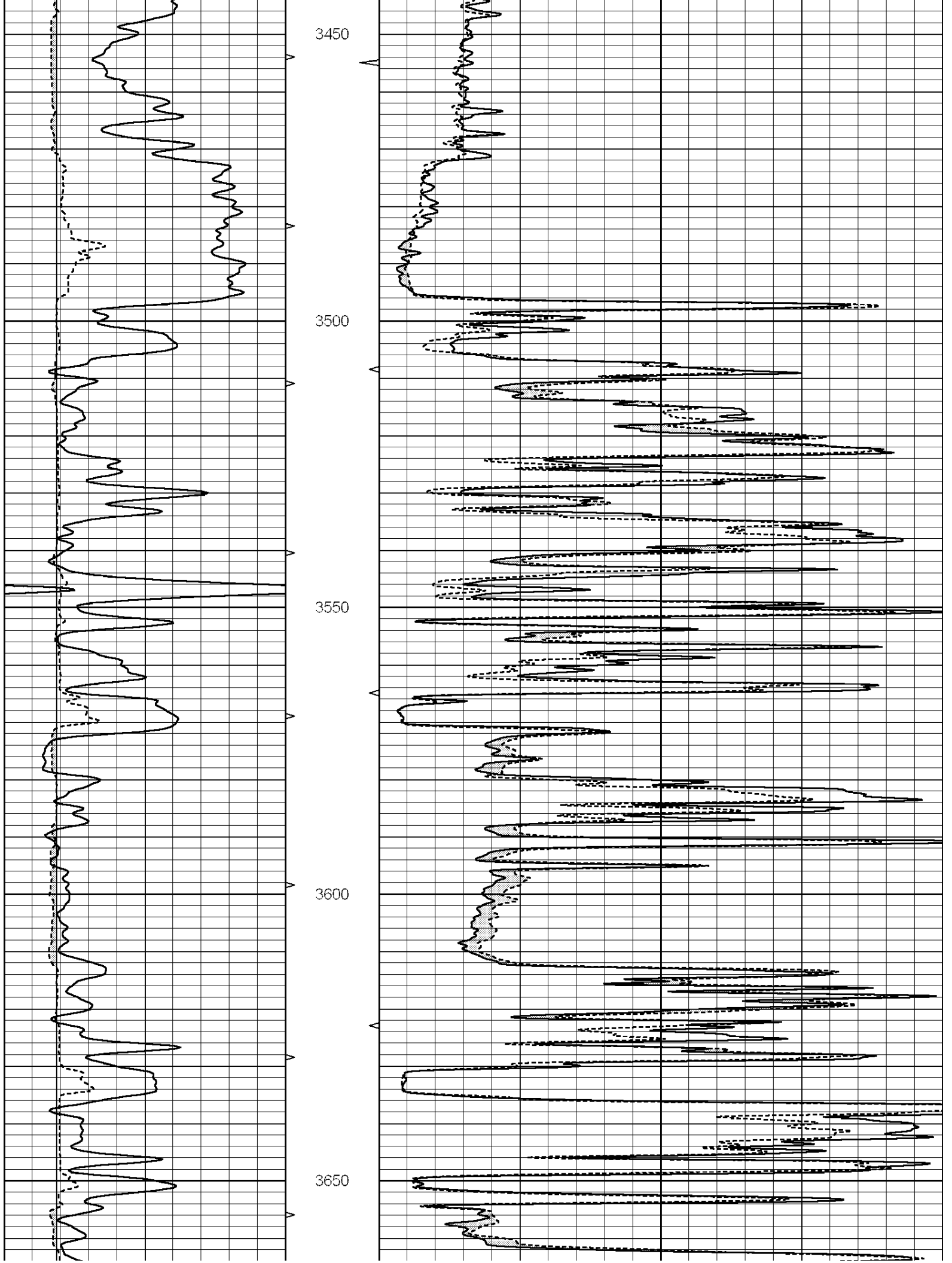
**MAIN SECTION**

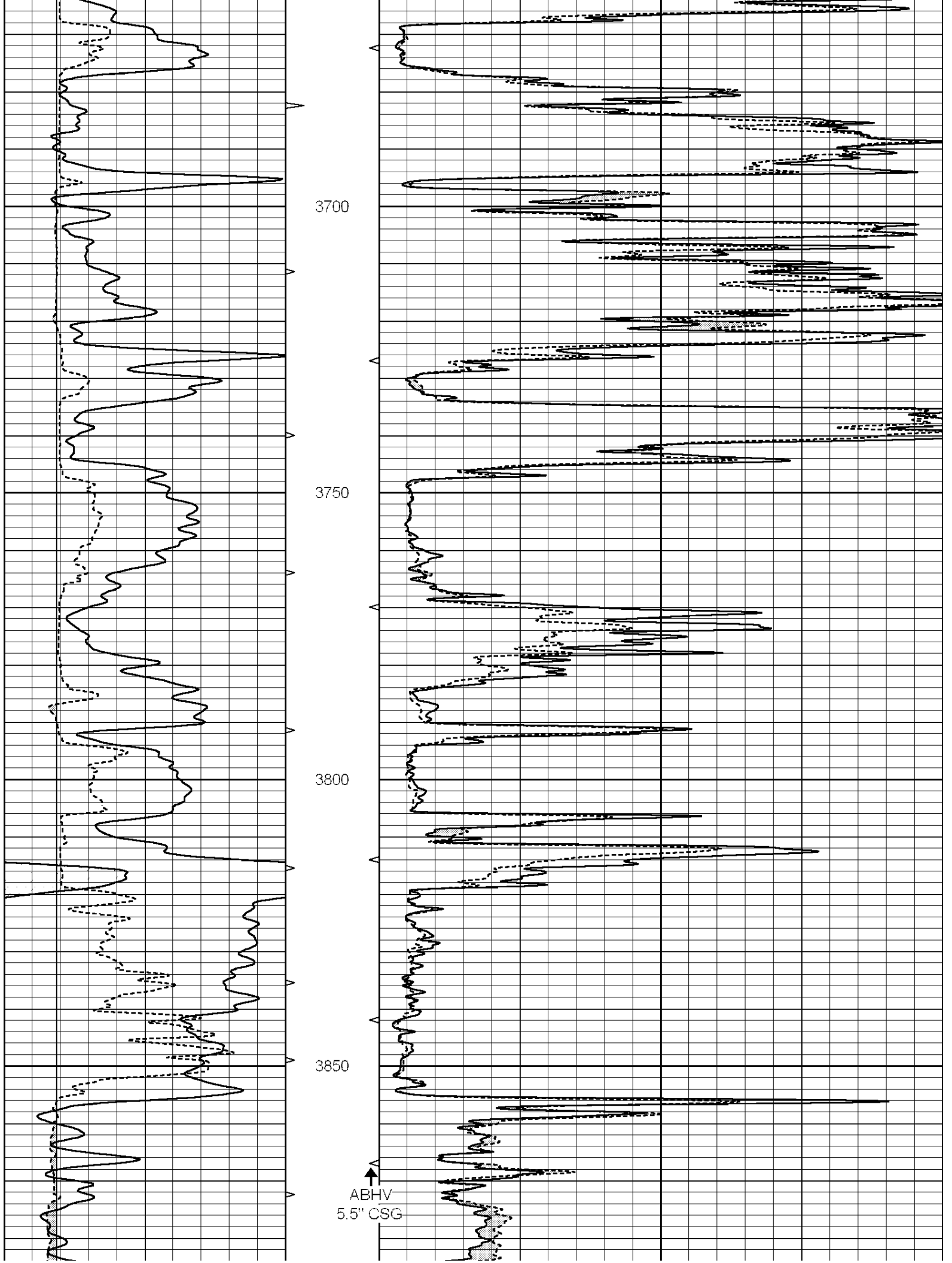
Database File: 009600ddn.db  
 Dataset Pathname: pass6.1  
 Presentation Format: \_micro  
 Dataset Creation: Sat Sep 08 12:25:27 2012 by Calc Open-Cased 090629  
 Charted by: Depth in Feet scaled 1:240

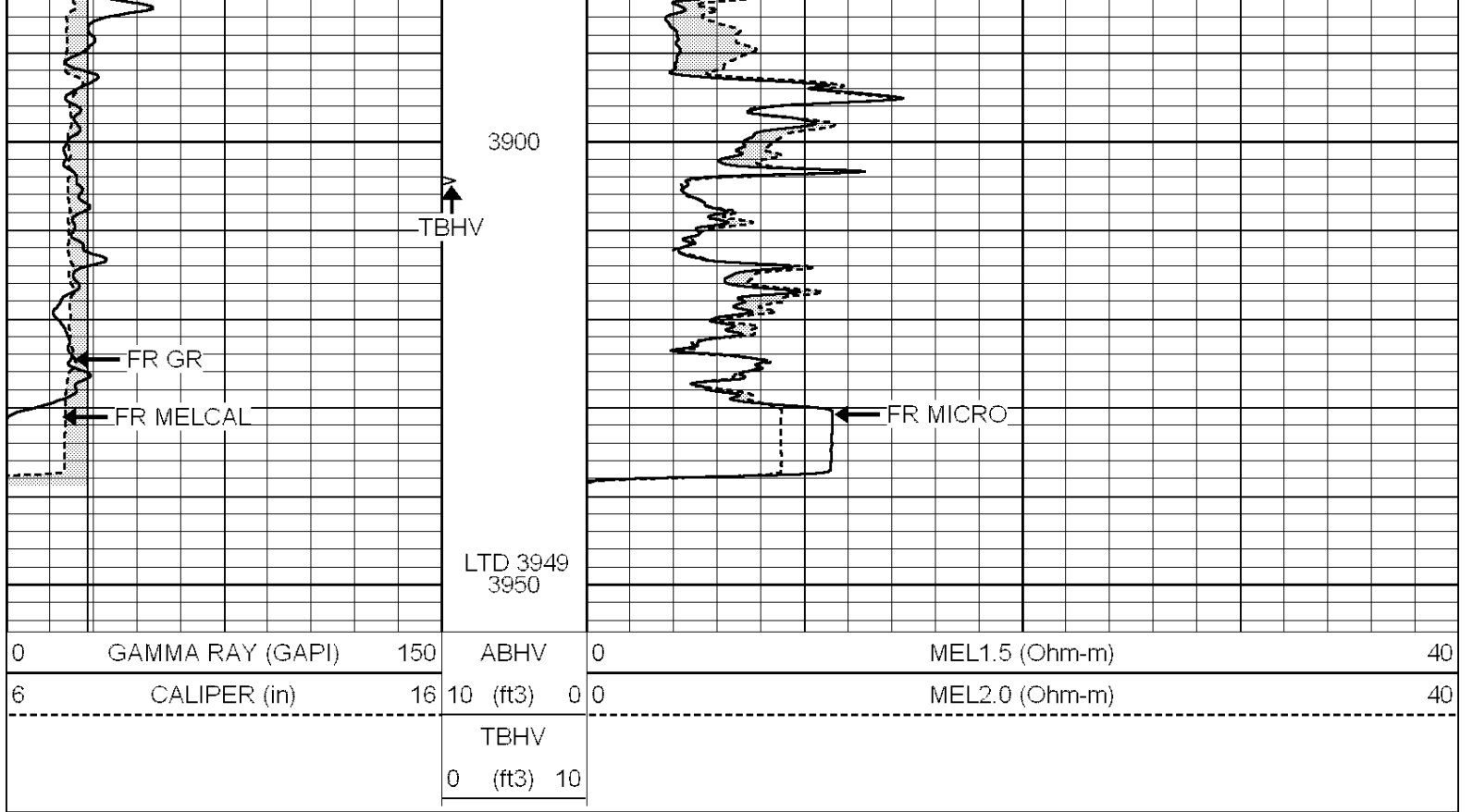
0	GAMMA RAY (GAPI)	150	ABHV	0	MEL1.5 (Ohm-m)	40
6	CALIPER (in)	16	10 (ft3)	0	MEL2.0 (Ohm-m)	40
			TBHV			
			0 (ft3)	10		









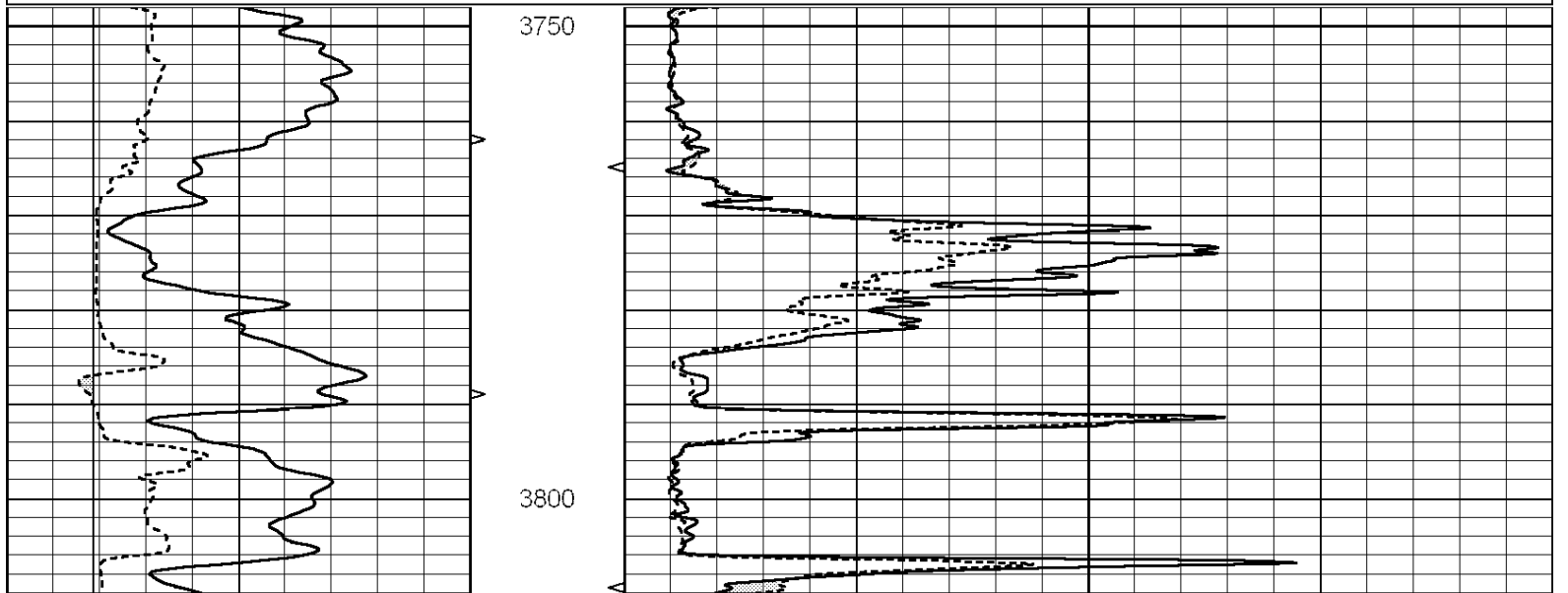


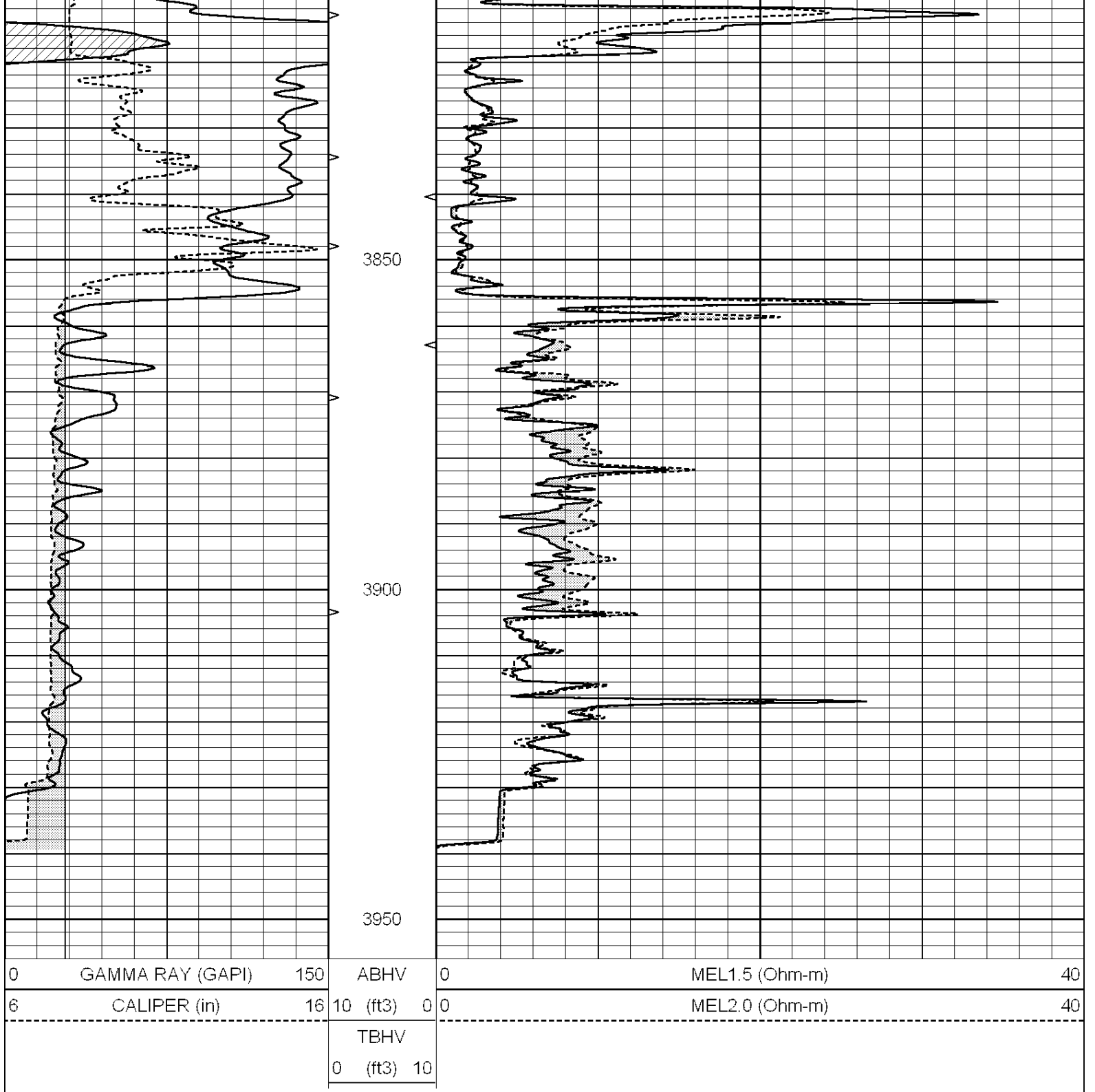
SUPERIOR  
Hays,  
Kansas

# REPEAT SECTION

Database File: 009600ddn.db  
 Dataset Pathname: pass5.2  
 Presentation Format: \_micro  
 Dataset Creation: Sat Sep 08 12:04:33 2012 by Calc Open-Cased 090629  
 Charted by: Depth in Feet scaled 1:240

0	GAMMA RAY (GAPI)	150	ABHV	0	MEL1.5 (Ohm-m)	40
6	CALIPER (in)	16	10 (ft3)	0	MEL2.0 (Ohm-m)	40
			TBHV			
			0 (ft3)	10		





### Calibration Report

Database File: 009600ddn.db  
 Dataset Pathname: pass5.2  
 Dataset Creation: Sat Sep 08 12:04:33 2012 by Calc Open-Cased 090629

### MICRO Calibration Report

Serial Number: MICRO6  
 Tool Model: PROBE  
 Performed: Thu Aug 16 14:43:41 2012

Caliper Calibration: Gain=6.253      Offset=-1.608

References      Low Cal      High Cal  
                          5.800      13.000

Readings	1.178	2.330
1.5" Calibration:	Gain=30.075	Offset=-0.200
References	Low Cal 0.000	High Cal 20.000
Readings	0.004	1.196

2" Calibration:	Gain=30.041	Offset=0.000
References	Low Cal 0.000	High Cal 20.000
Readings	0.006	0.913

Gamma Ray Calibration Report		
------------------------------	--	--

Serial Number:	#8	
Tool Model:	OPEN	
Performed:	Mon Jun 13 16:56:43 2011	
Calibrator Value:	150.0	GAPI
Background Reading:	0.0	cps
Calibrator Reading:	175.0	cps
Sensitivity:	0.8371	GAPI/cps