



SUPERIOR
Hays,
Kansas

SONIC
LOG

Company SHELBY, LLC.
Well #1-3 WFYOG
Field EVERS
County PAWNEE
State KANSAS

Company SHELBY, LLC.
Well #1-3 WFYOG
Field EVERS
County PAWNEE
State KANSAS

Location: 330' FNL & 1602' FEL
API #: 15-145-21683-0000
SEC 3 TWP 22S RGE 16W
Permanent Datum GROUND LEVEL Elevation 1986
Log Measured From KELLY BUSHING 9.5' A.G.L.
Drilling Measured From KELLY BUSHING
Elevation
K.B. 1995.5
D.F. 1993.5
G.L. 1986

Date	9/8/12		
Run Number	TWO		
Depth Driller	3950		
Depth Logger	3949		
Bottom Logged Interval	3939		
Top Log Interval	980		
Casing Driller	8 5/8" @ 1002		
Casing Logger	1006		
Bit Size	7 7/8		
Type Fluid in Hole	CHEMICAL MUD	CHLORIDES 5600 PPM	
Density / Viscosity	9.0/54		
pH / Fluid Loss	9.5/7.6		
Source of Sample	FLOWLINE		
Rin @ Meas. Temp	.60 @ 88F		
Rmf @ Meas. Temp	.45 @ 88F		
Rmc @ Meas. Temp	.72 @ 88F		
Source of Rmf / Rmc	MEASURED		
Rin @ BHT	.45 @ 115F		
Time Circulation Stopped	2 HOURS		
Time Logger on Bottom			
Maximum Recorded Temperature	115F		
Equipment Number	680		
Location	HAYS, KS.		
Recorded By	JASON CAPPELLUCCI		
Witnessed By	CHARLIE STURDAVANT		

<<< Fold Here >>>

All interpretations are opinions based on inferences from electrical or other measurements and we cannot and do not guarantee the accuracy or correctness of any interpretation, and we shall not, except in the case of gross or willful negligence on our part, be liable or responsible for any loss, costs, damages, or expenses incurred or sustained by anyone resulting from any interpretation made by any of our officers, agents or employees. These interpretations are also subject to our general terms and conditions set out in our current Price Schedule.

Comments

THANK YOU FOR USING SUPERIOR WELL SERVICE (785) 628-6395
DIRECTIONS
LARNED, KS. - S. ON MAIN STREET - 2 BLOCKS PAST RR TRACKS
2 E. ON 1ST ST. - S. & E. INTO

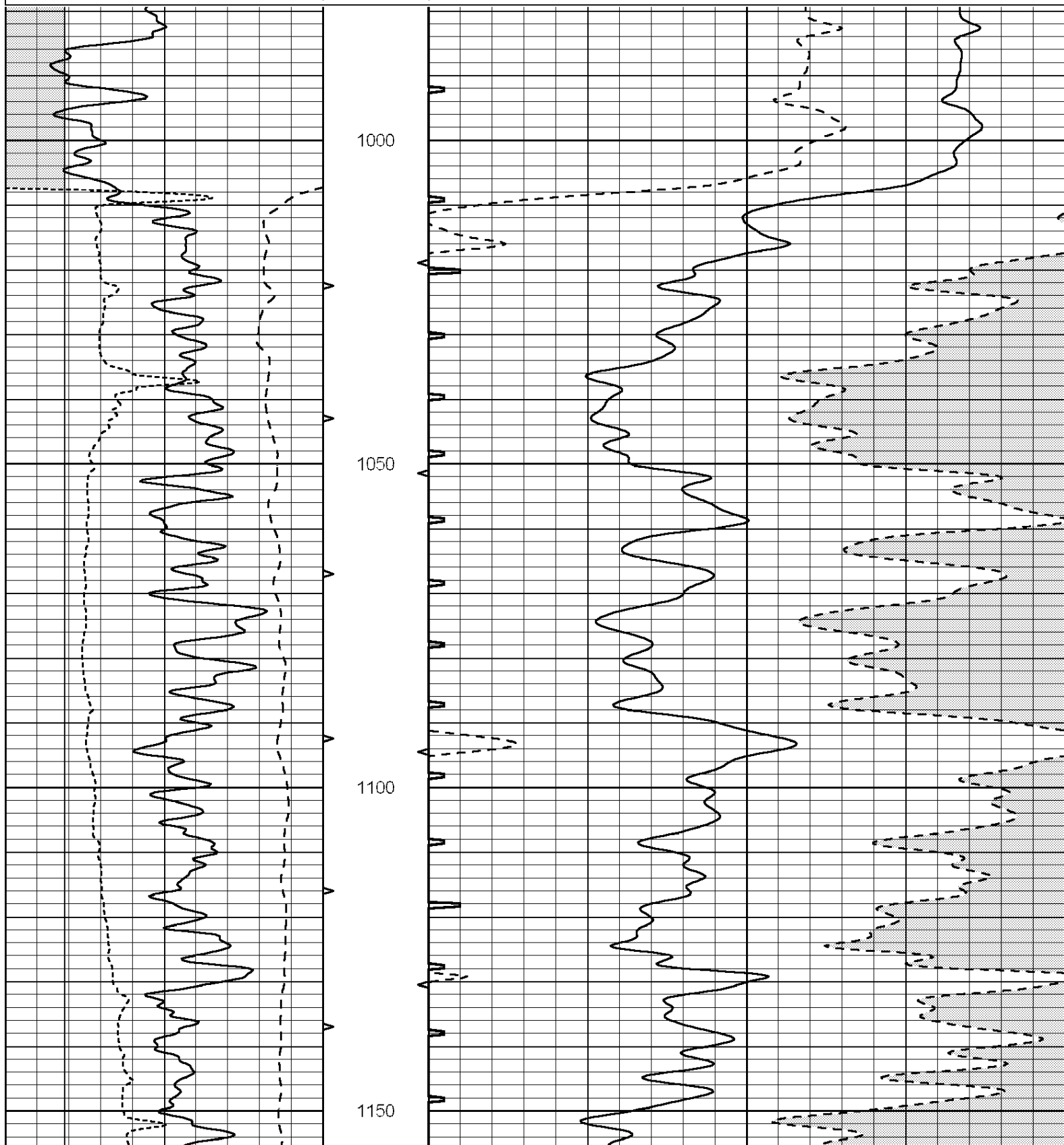


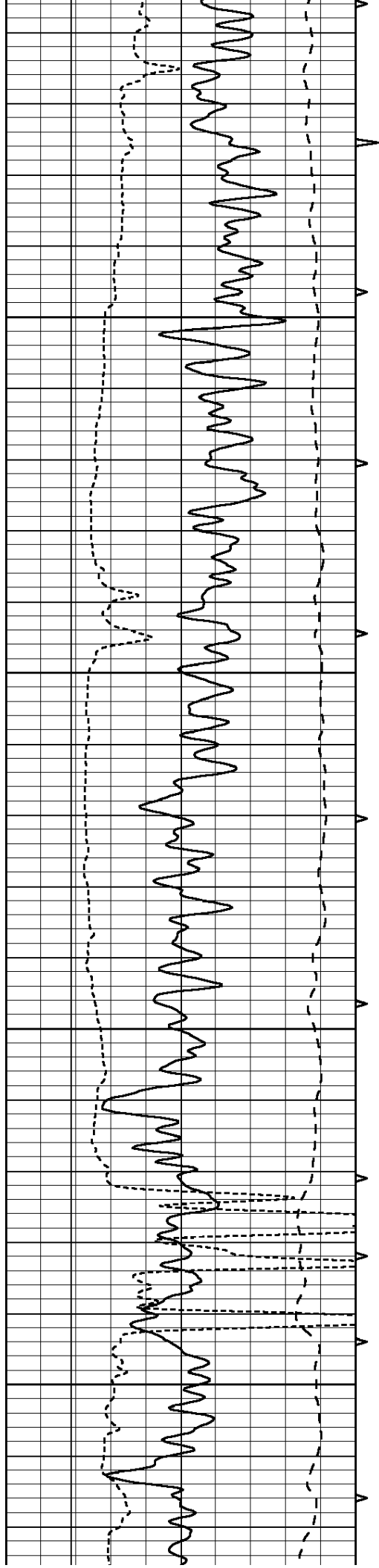
SUPERIOR
Hays,
Kansas

MAIN SECTION

Database File: 009600ddn.db
 Dataset Pathname: pass6.2
 Presentation Format: _slt
 Dataset Creation: Sat Sep 08 12:58:44 2012 by Calc Open-Cased 090629
 Charted by: Depth in Feet scaled 1:240

0	GAMMA RAY (GAPI)	150	ABHV	140	DELTA TIME (usec/ft)	40	
6	CALIPER (in)	16	10 (ft3)	0	30	SONIC POROSITY (pu)	-10
-100	SP (mV)	100	TBHV	0	ITT (msec)	20	
			0 (ft3)	10			



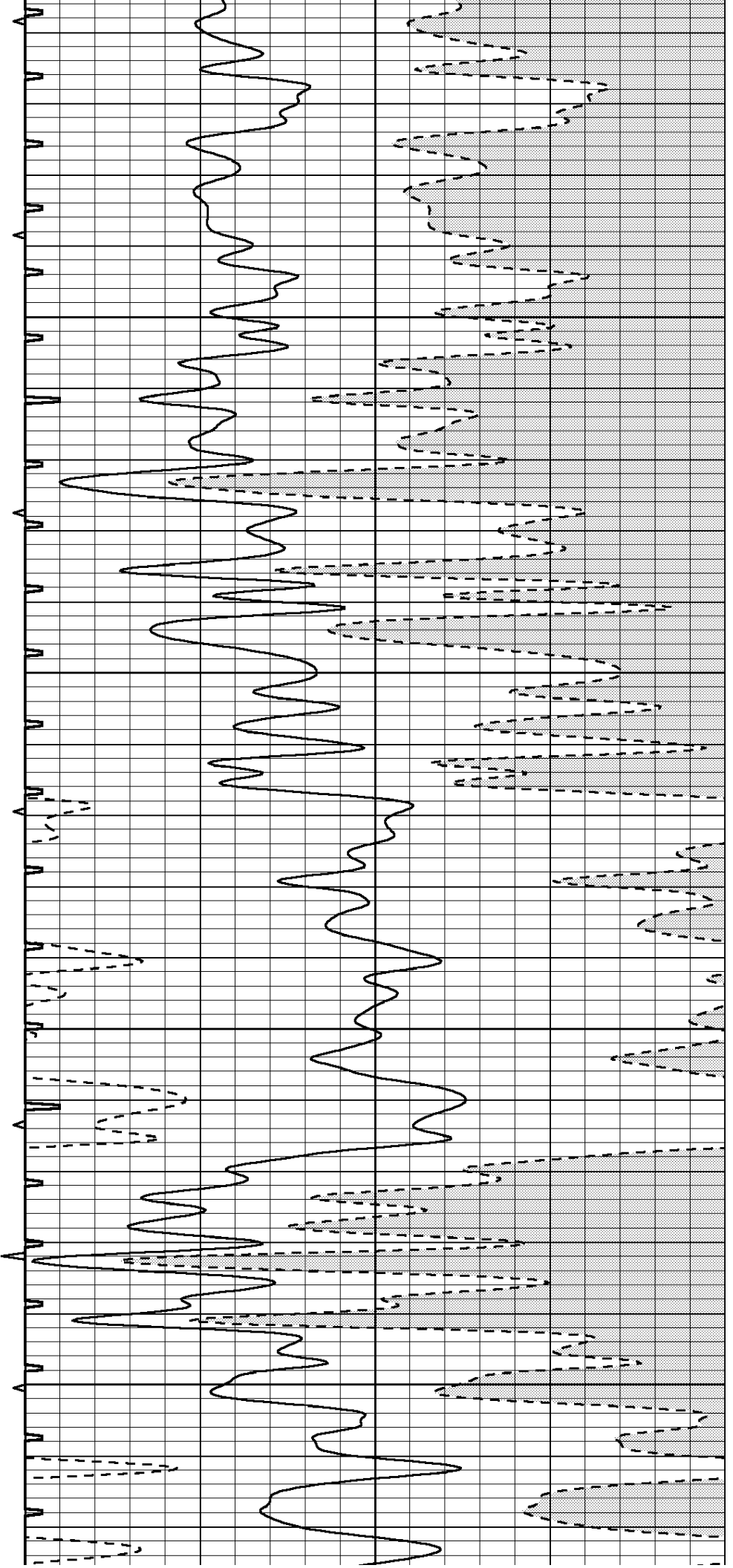


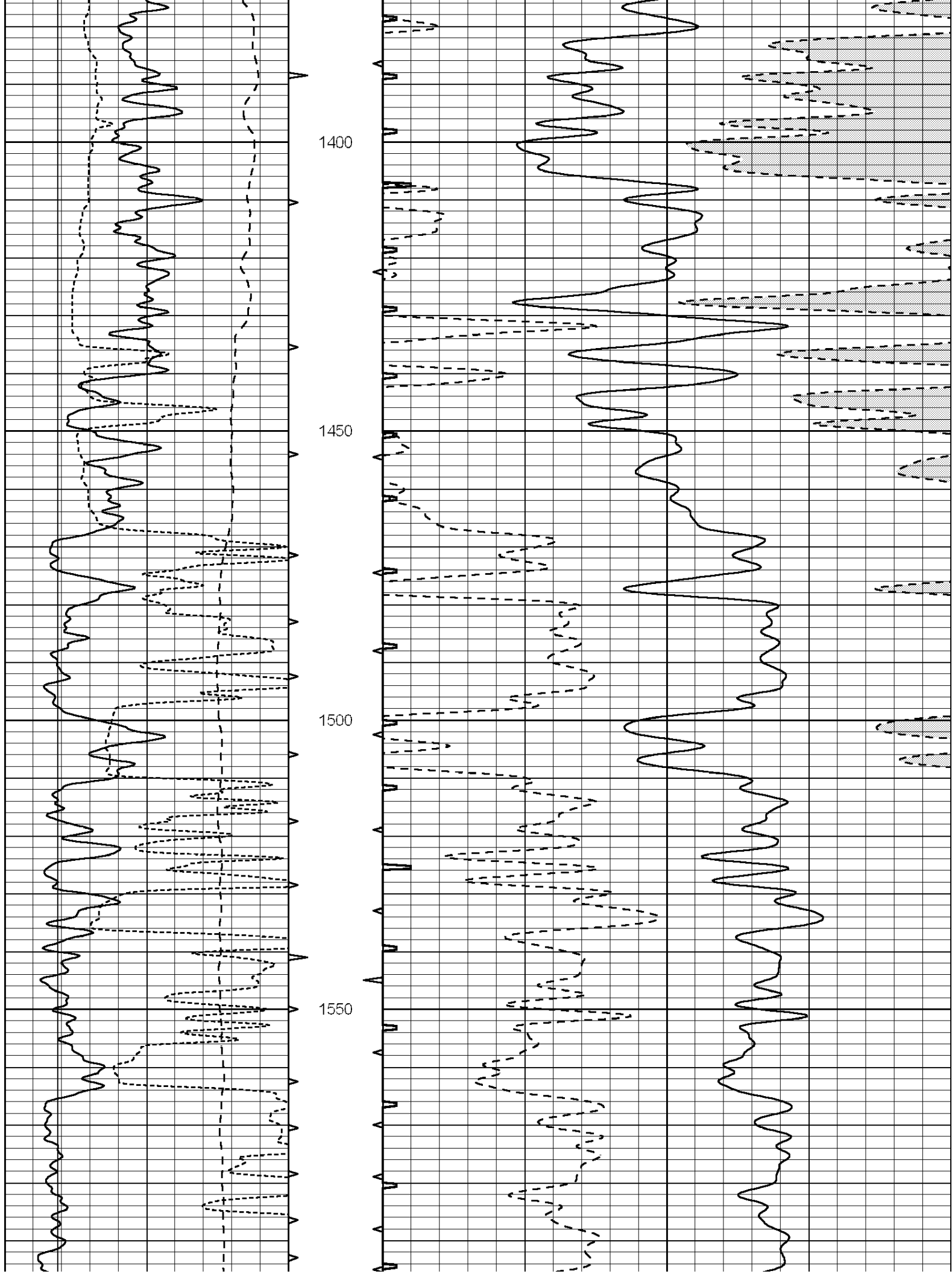
1200

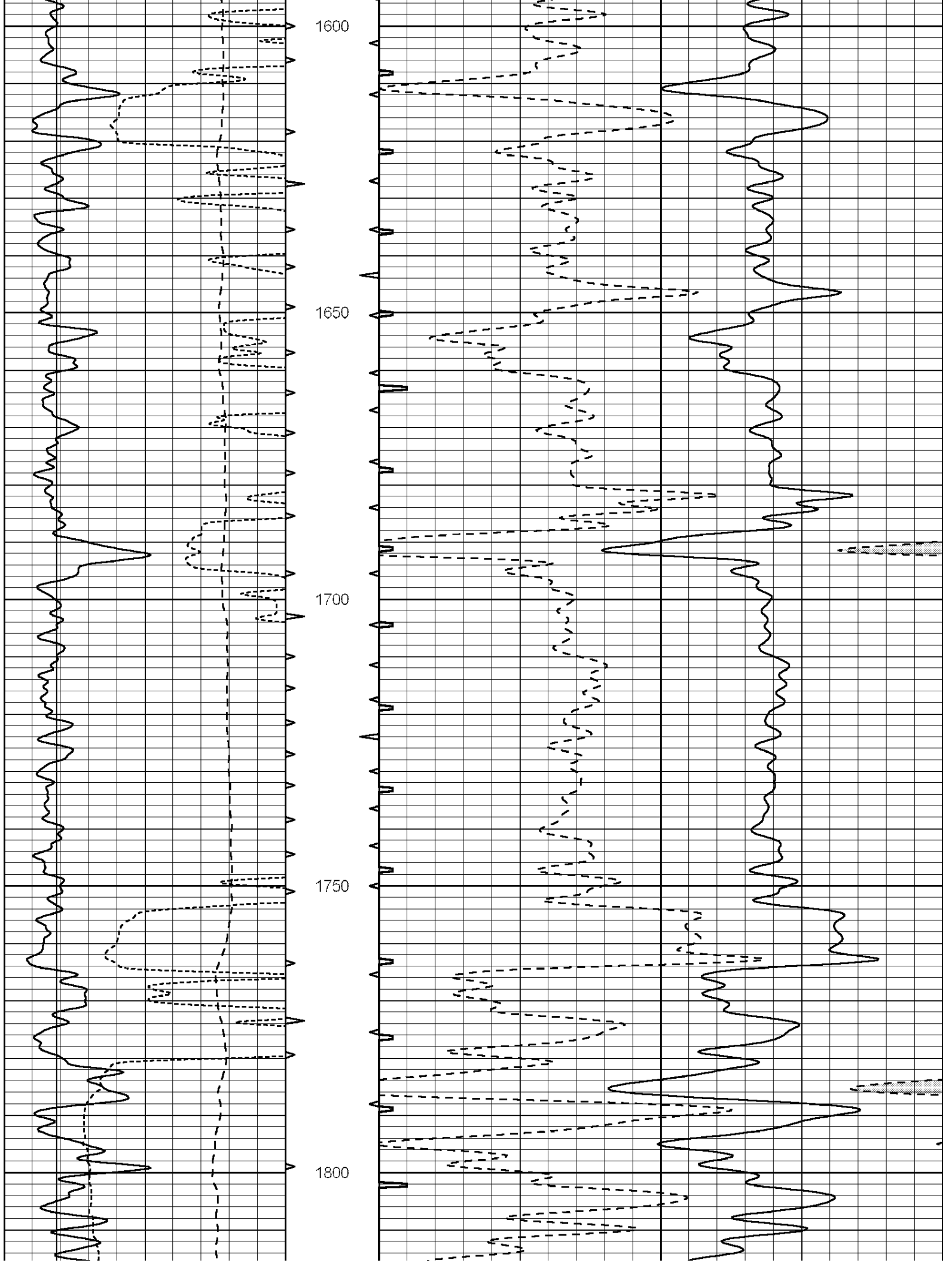
1250

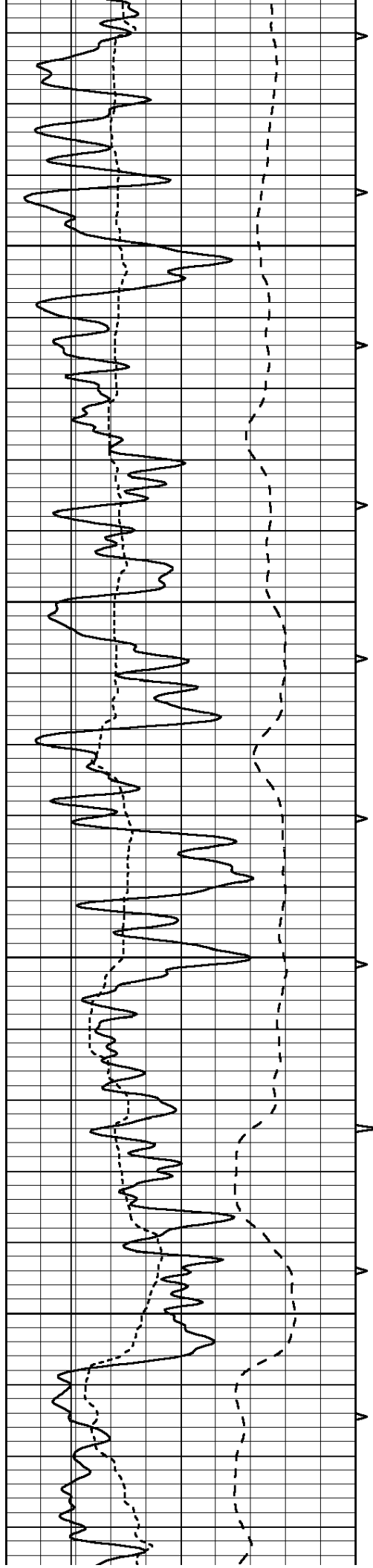
1300

1350







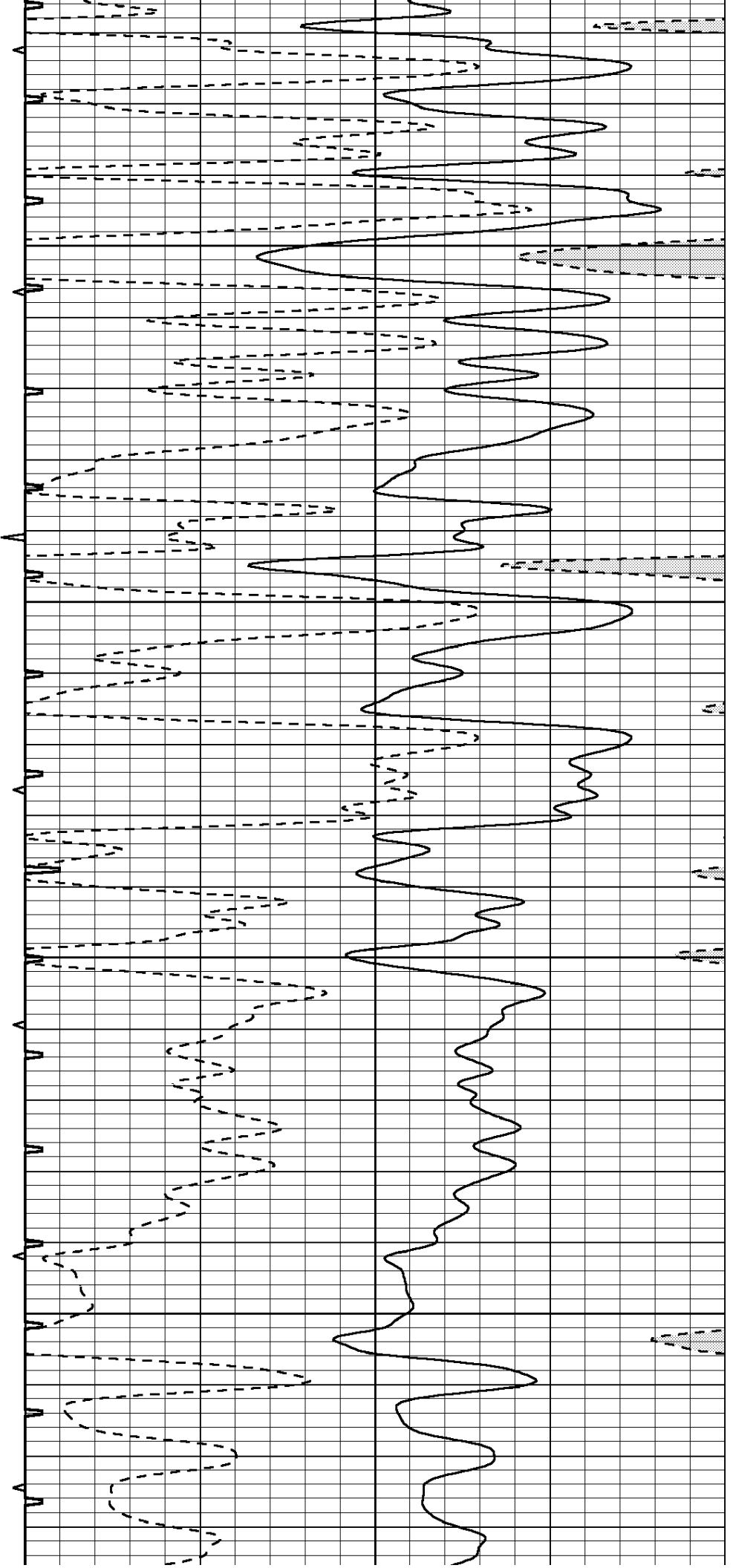


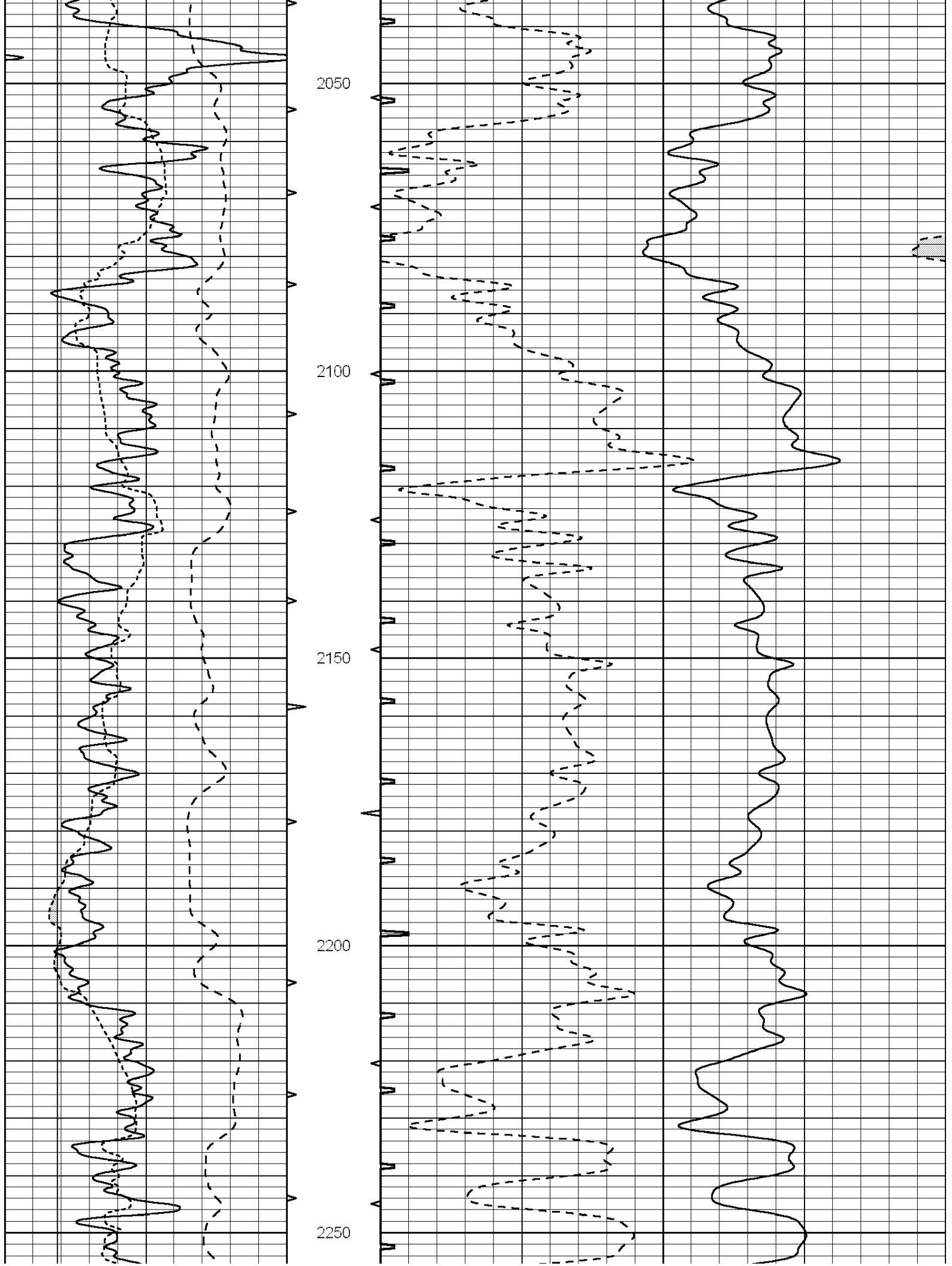
1850

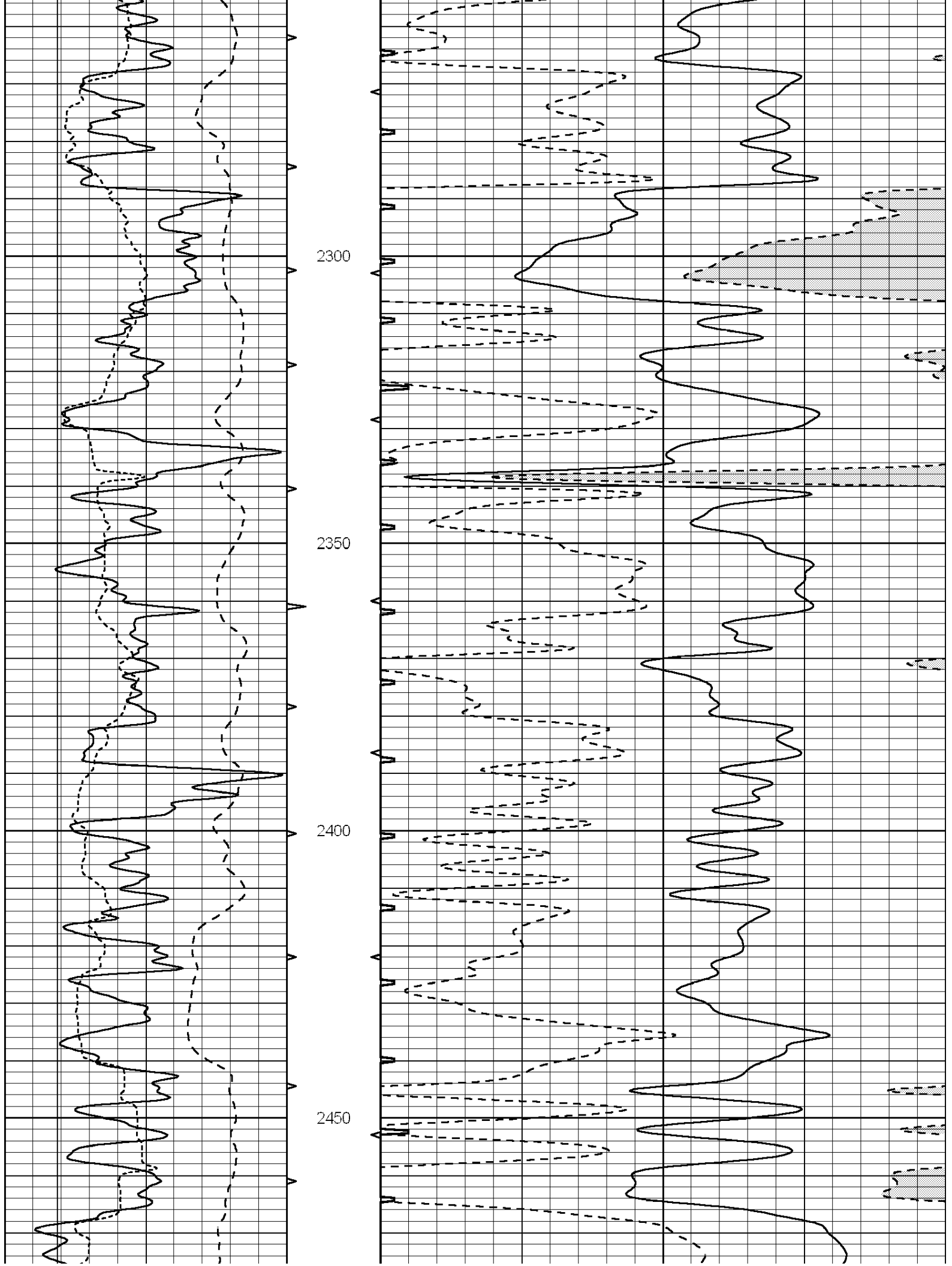
1900

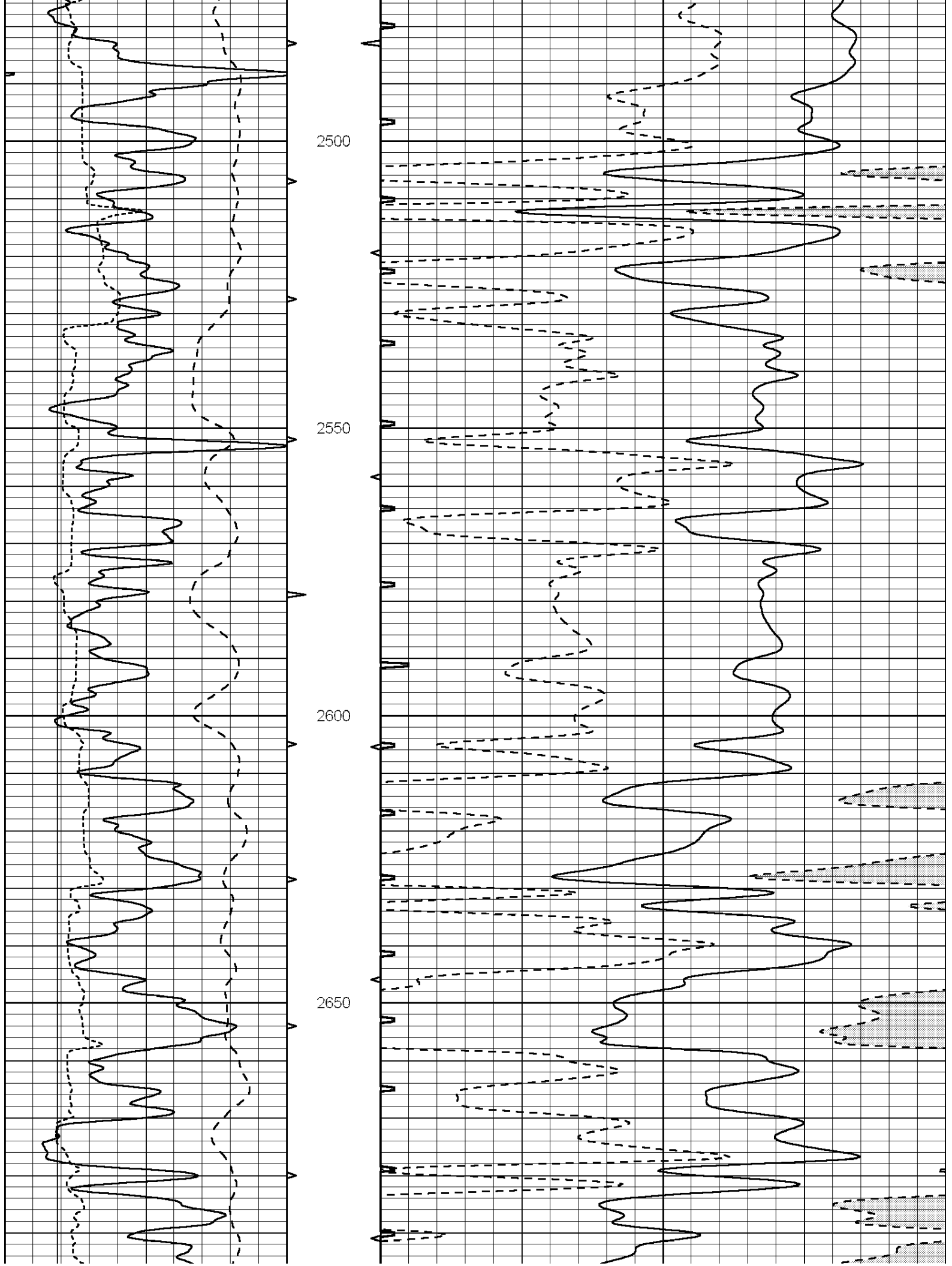
1950

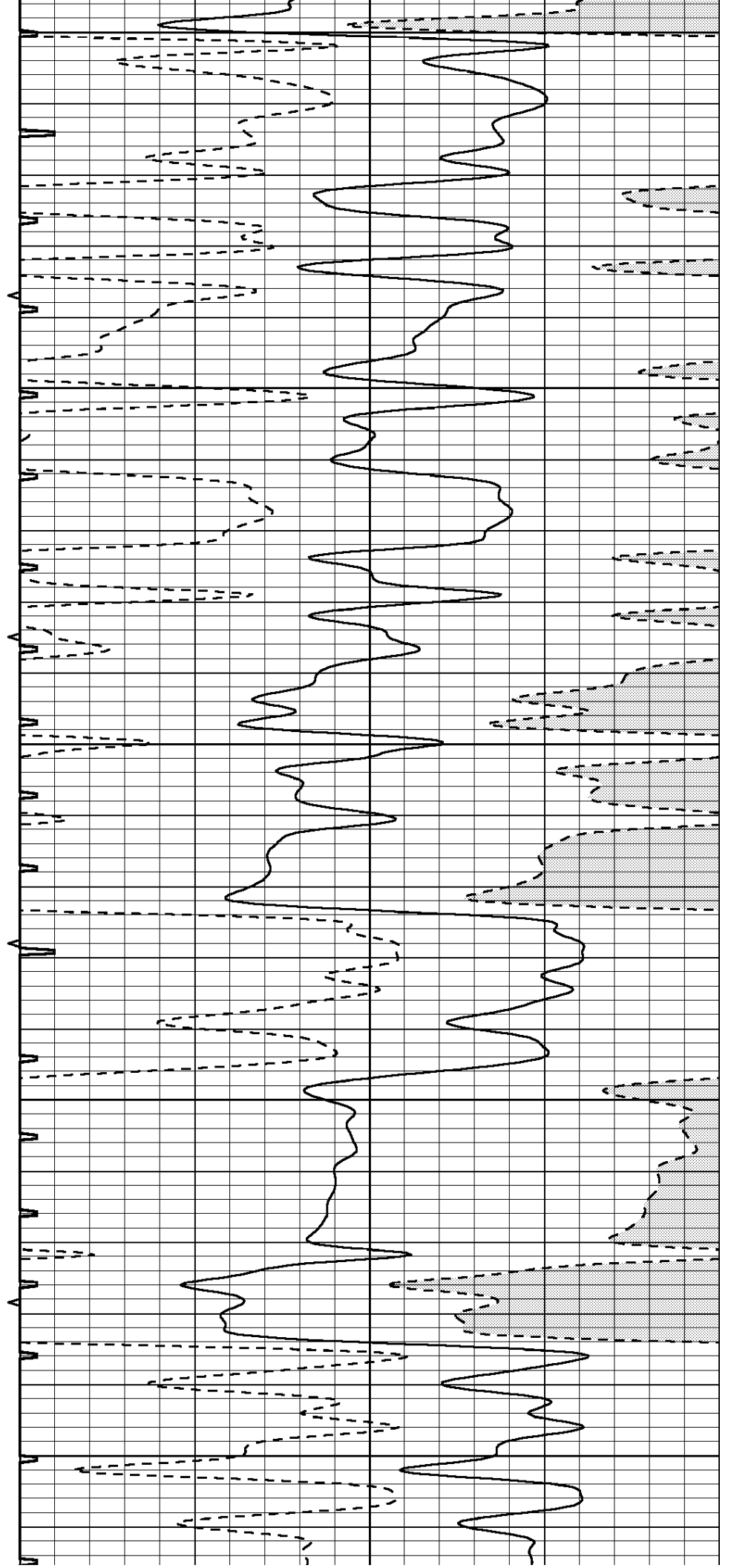
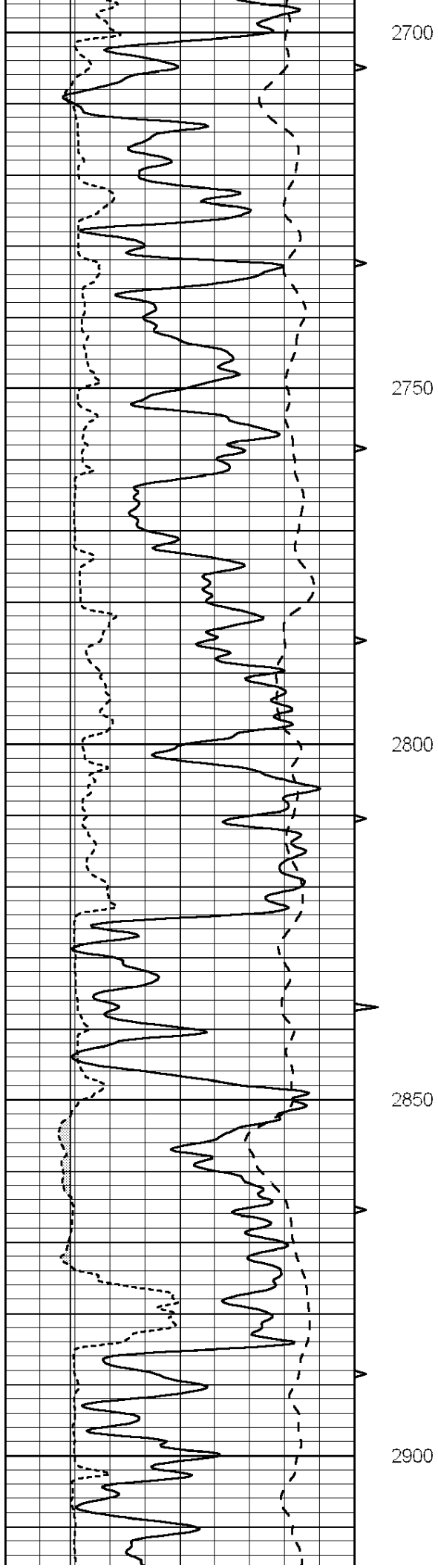
2000

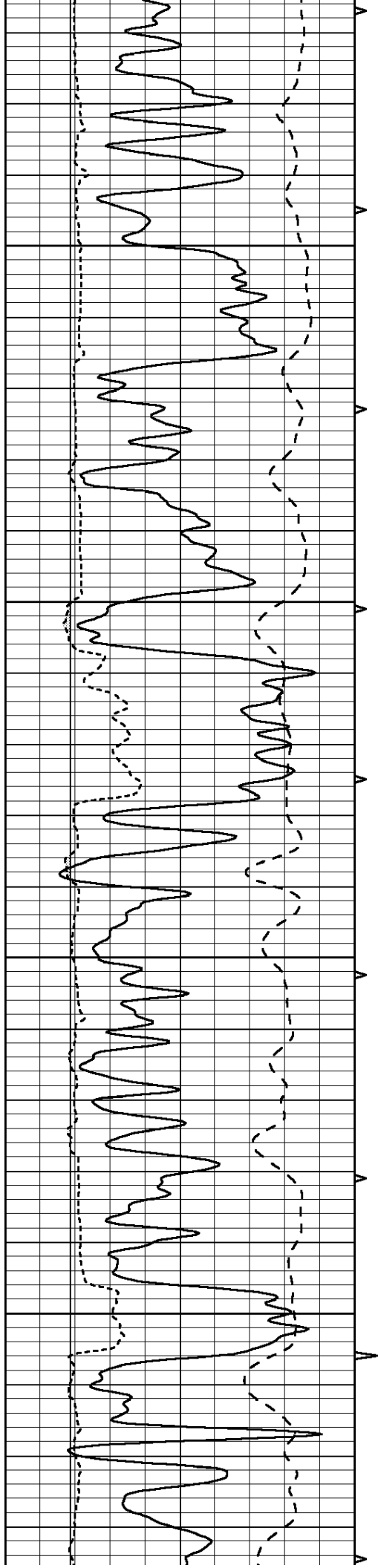










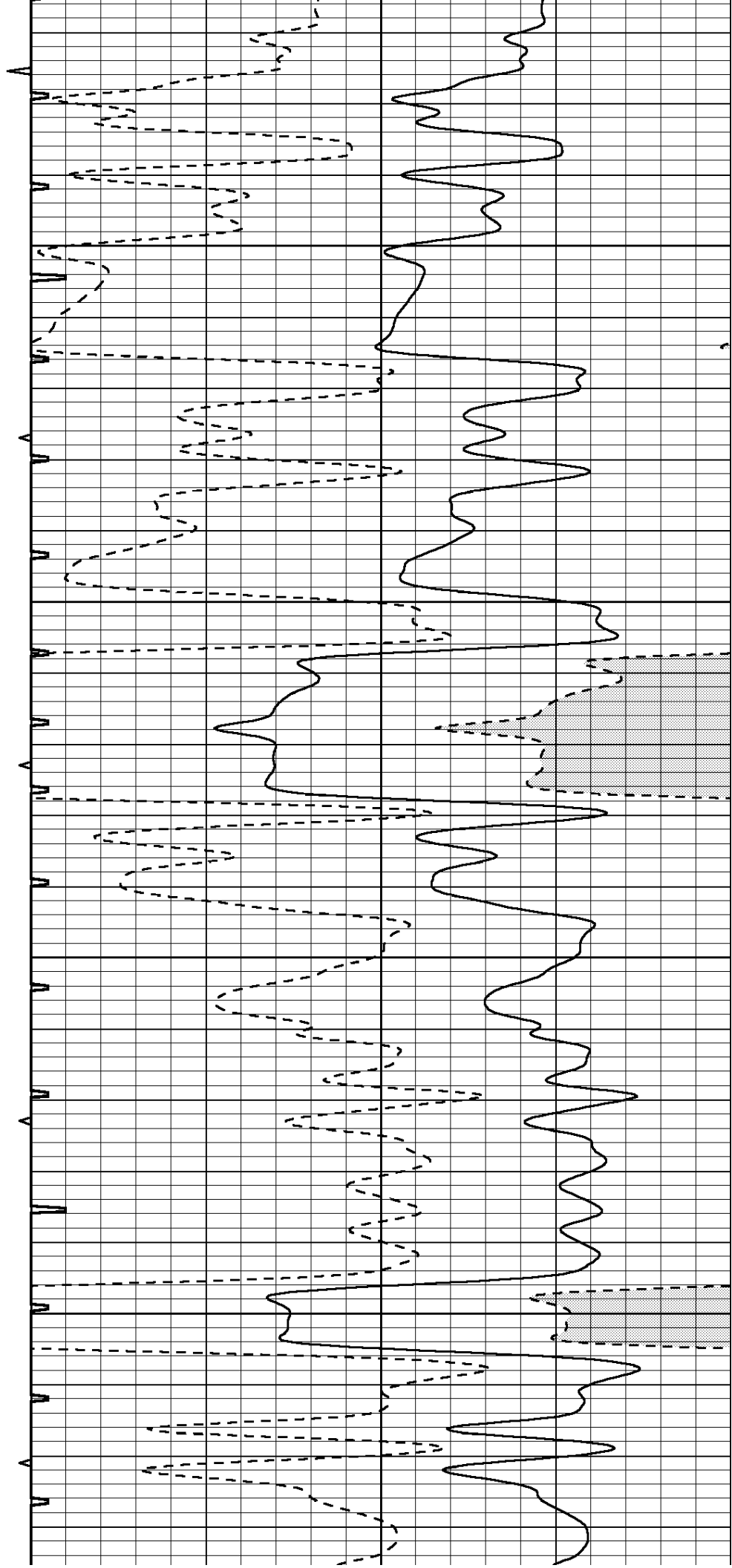


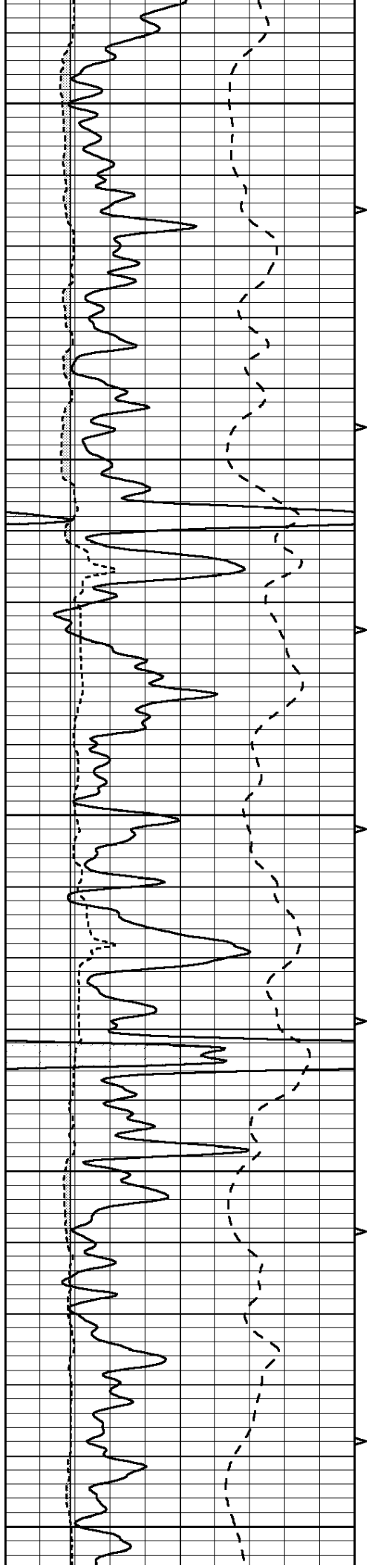
2950

3000

3050

3100





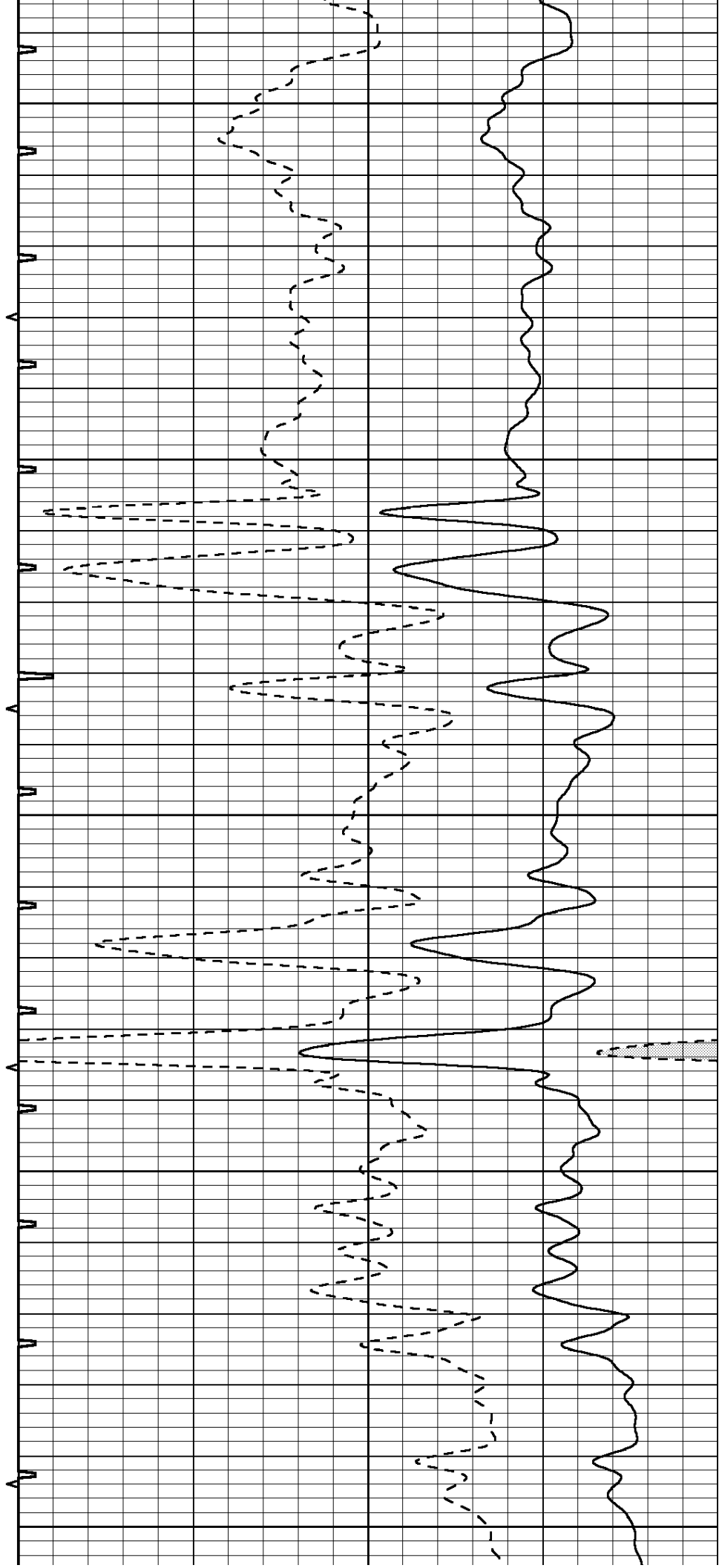
3150

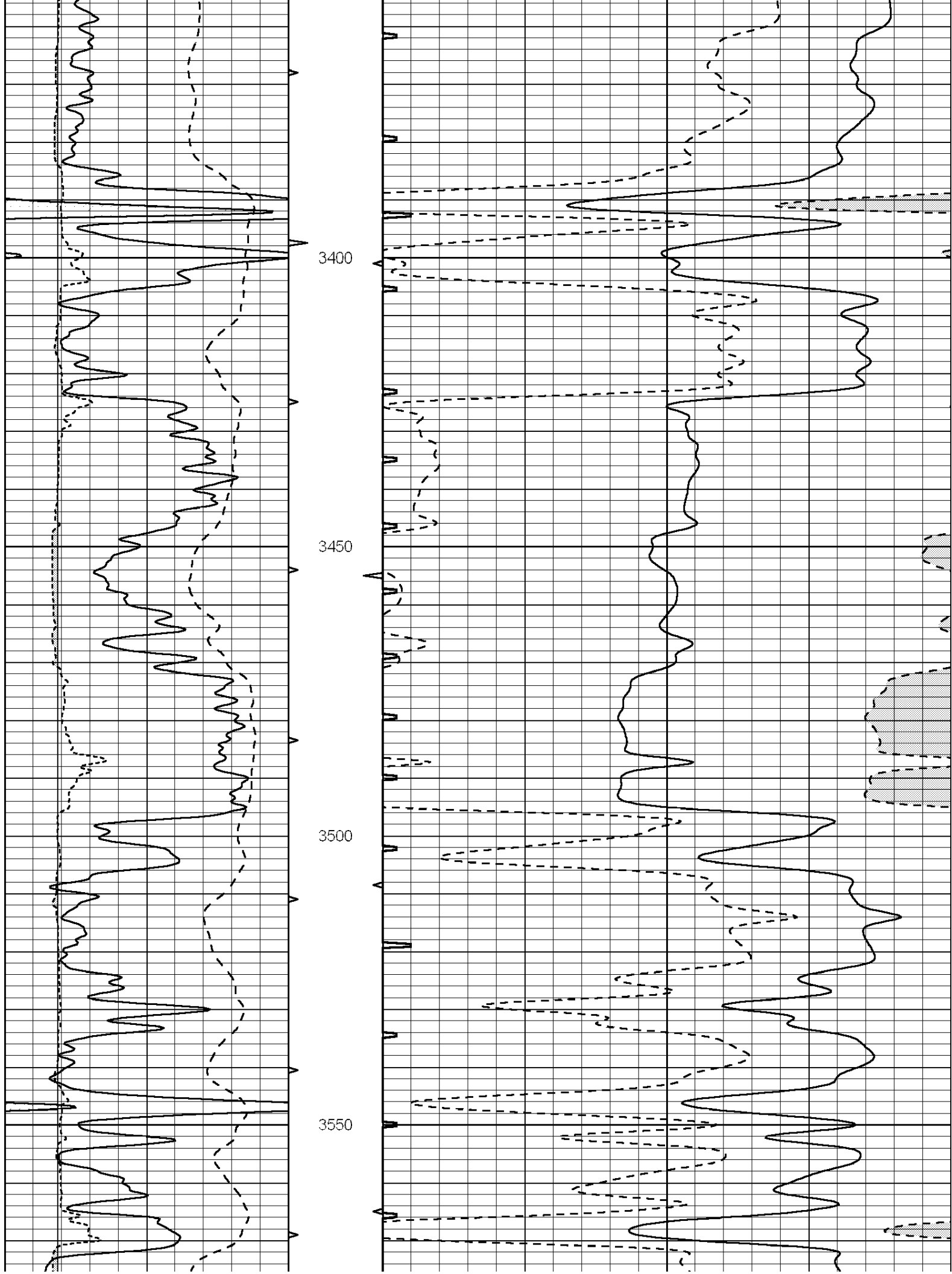
3200

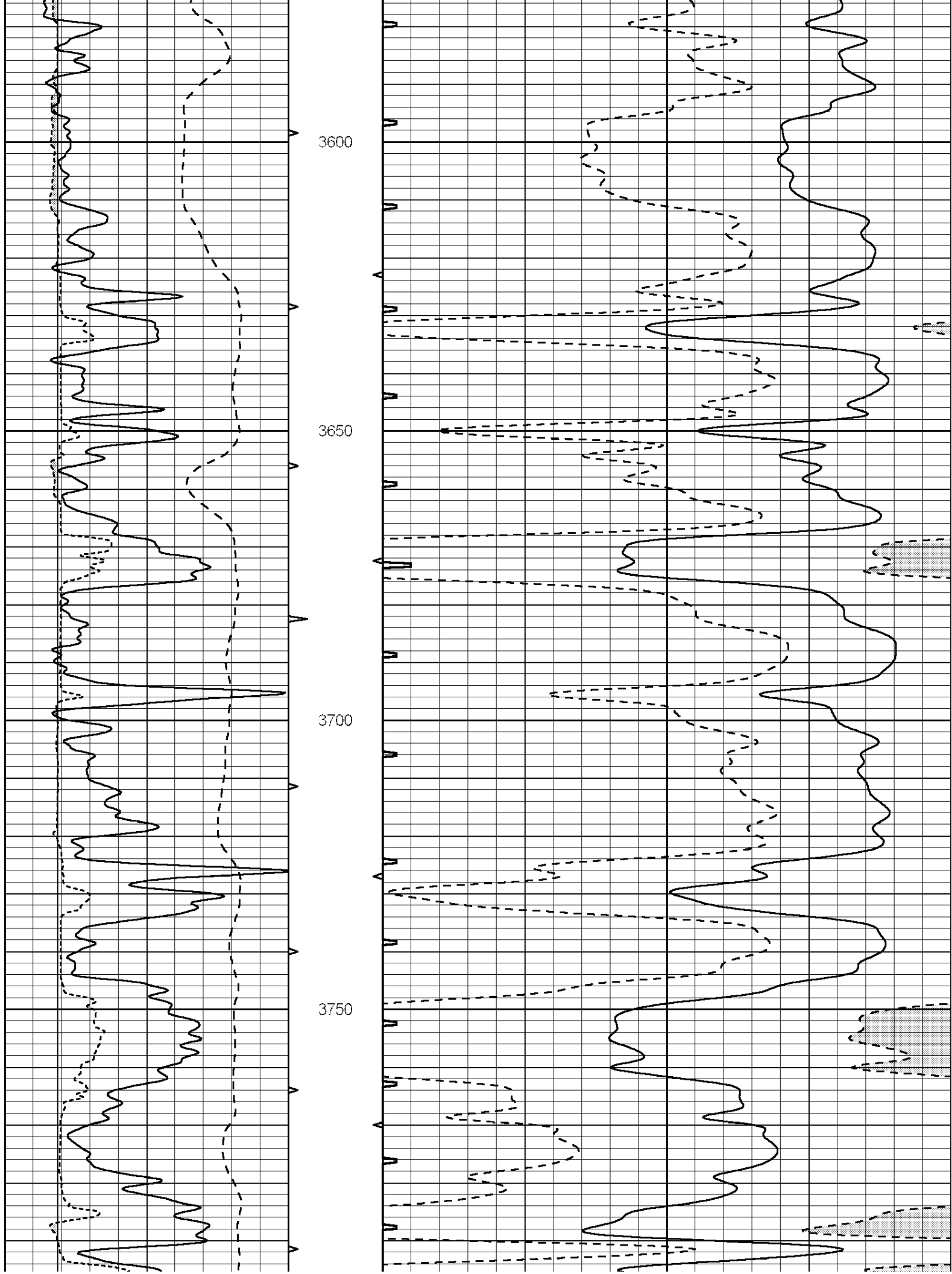
3250

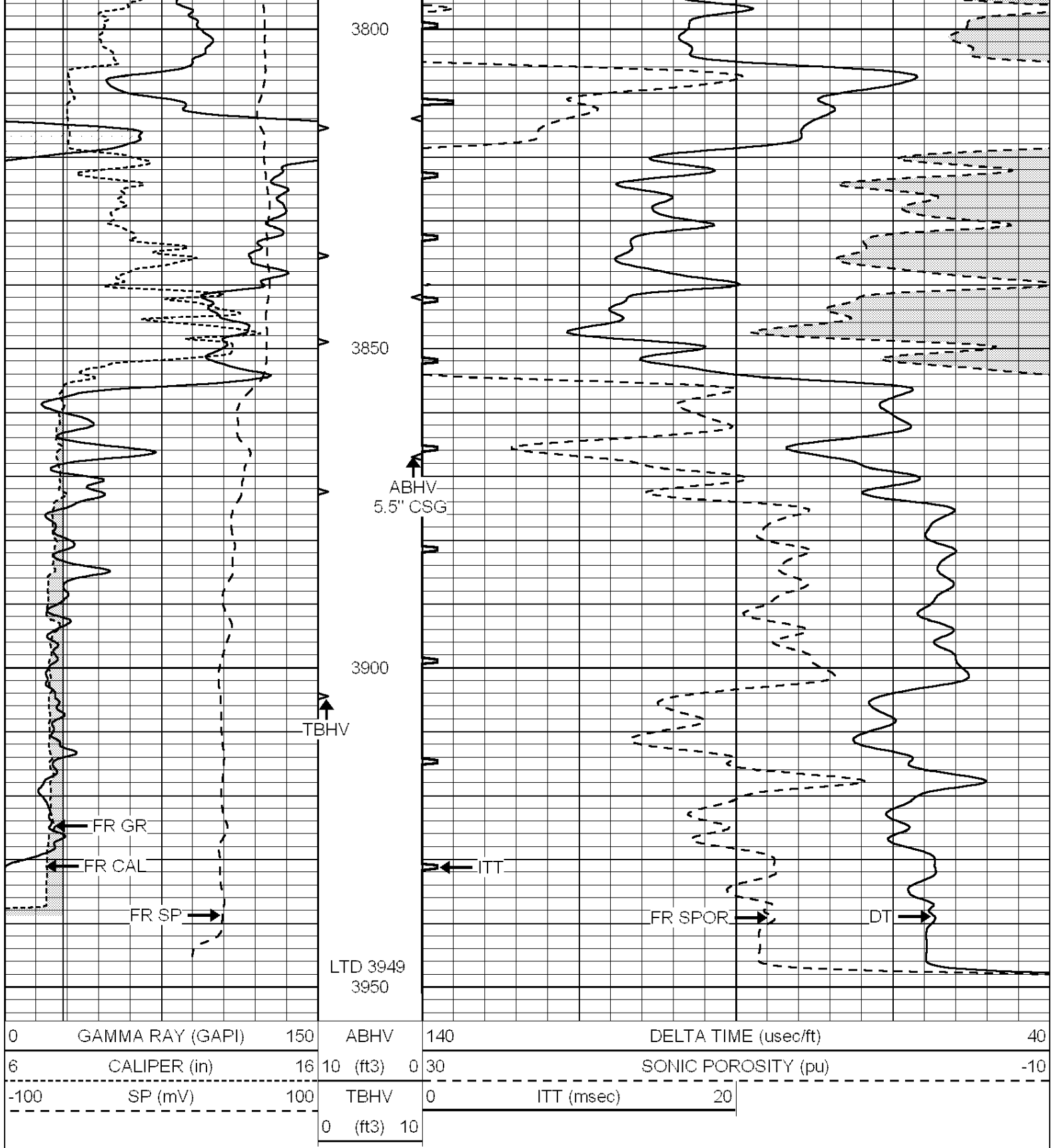
3300

3350









SUPERIOR
Hays,
Kansas

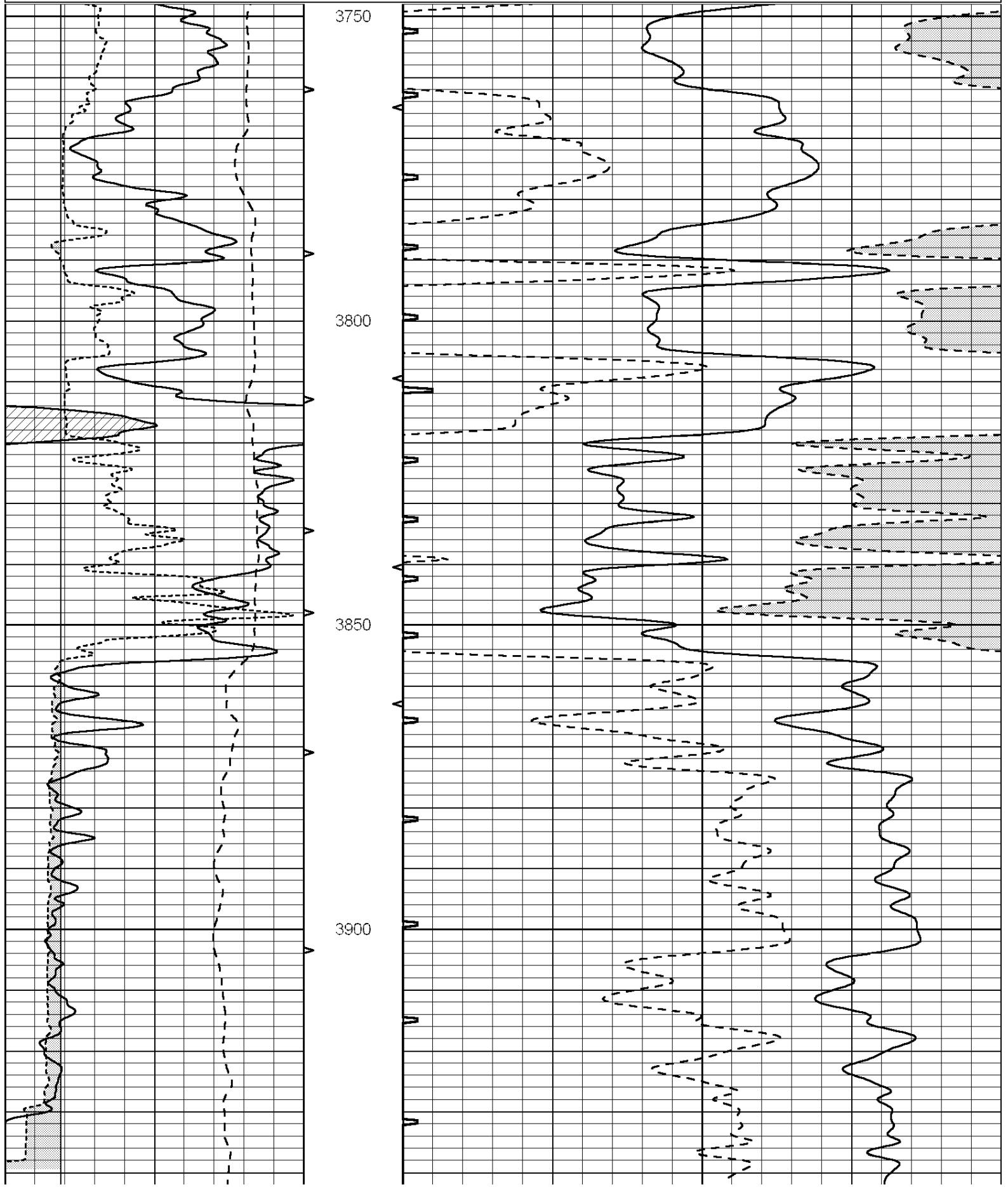
REPEAT SECTION

Database File: 009600ddn.db
 Dataset Pathname: pass5.1
 Presentation Format: _slt
 Dataset Creation: Sat Sep 08 11:54:08 2012 by Calc Open-Cased 090629

Charted by:

Depth in Feet scaled 1:240

0	GAMMA RAY (GAPI)	150	ABHV	140	DELTA TIME (usec/ft)	40
6	CALIPER (in)	16	10 (ft3) 0	30	SONIC POROSITY (pu)	-10
-100	SP (mV)	100	TBHV	0	ITT (msec)	20
			0 (ft3) 10			



			3950						
0	GAMMA RAY (GAPI)	150	ABHV	140	DELTA TIME (usec/ft)			40	
6	CALIPER (in)	16	10 (ft3)	0	30	SONIC POROSITY (pu)			-10
-100	SP (mV)	100	TBHV	0	ITT (msec)	20			
			0 (ft3)	10					