



SUPERIOR
Hays,
Kansas

**COMPENSATED
DENSITY/NEUTRON
LOG**

Company SHELBY, LLC.
Well #1-3 WFYOG
Field EVERS
County PAWNEE
State KANSAS

Company SHELBY, LLC.
Well #1-3 WFYOG
Field EVERS
County PAWNEE State KANSAS

Location: 330' FNL & 1602' FEL
API # : 15-145-21683-0000
SEC 3 TWP 22S RGE 16W
Permanent Datum GROUND LEVEL Elevation 1986
Log Measured From KELLY BUSHING 9.5' A.G.L.
Drilling Measured From KELLY BUSHING
Other Services
DIL
MEL/SON
Elevation
K.B. 1995.5
D.F. 1993.5
G.L. 1986

Date	9/8/12		
Run Number	ONE		
Depth Driller	3950		
Depth Logger	3949		
Bottom Logged Interval	3925		
Top Log Interval	3050		
Casing Driller	8 5/8" @ 1002		
Casing Logger	1006		
Bit Size	7 7/8		
Type Fluid in Hole	CHEMICAL MUD	CHLORIDES 5600 PPM	
Density / Viscosity	9.0/54		
pH / Fluid Loss	9.5/7.6		
Source of Sample	FLOWLINE		
Rin @ Meas. Temp	.60 @ 88F		
Rmf @ Meas. Temp	.45 @ 88F		
Rmc @ Meas. Temp	.72 @ 88F		
Source of Rmf / Rmc	MEASURED		
Rin @ BHT	.45 @ 115F		
Time Circulation Stopped	2 HOURS		
Time Logger on Bottom			
Maximum Recorded Temperature	115F		
Equipment Number	680		
Location	HAYS, KS.		
Recorded By	JASON CAPPELLUCCI		
Witnessed By	CHARLIE STURDAVANT		

<<< Fold Here >>>

All interpretations are opinions based on inferences from electrical or other measurements and we cannot and do not guarantee the accuracy or correctness of any interpretation, and we shall not, except in the case of gross or willful negligence on our part, be liable or responsible for any loss, costs, damages, or expenses incurred or sustained by anyone resulting from any interpretation made by any of our officers, agents or employees. These interpretations are also subject to our general terms and conditions set out in our current Price Schedule.

Comments

THANK YOU FOR USING SUPERIOR WELL SERVICE (785) 628-6395
DIRECTIONS
LARNED, KS. - S. ON MAIN STREET - 2 BLOCKS PAST RR TRACKS
2 E. ON 1ST ST. - S. & E. INTO

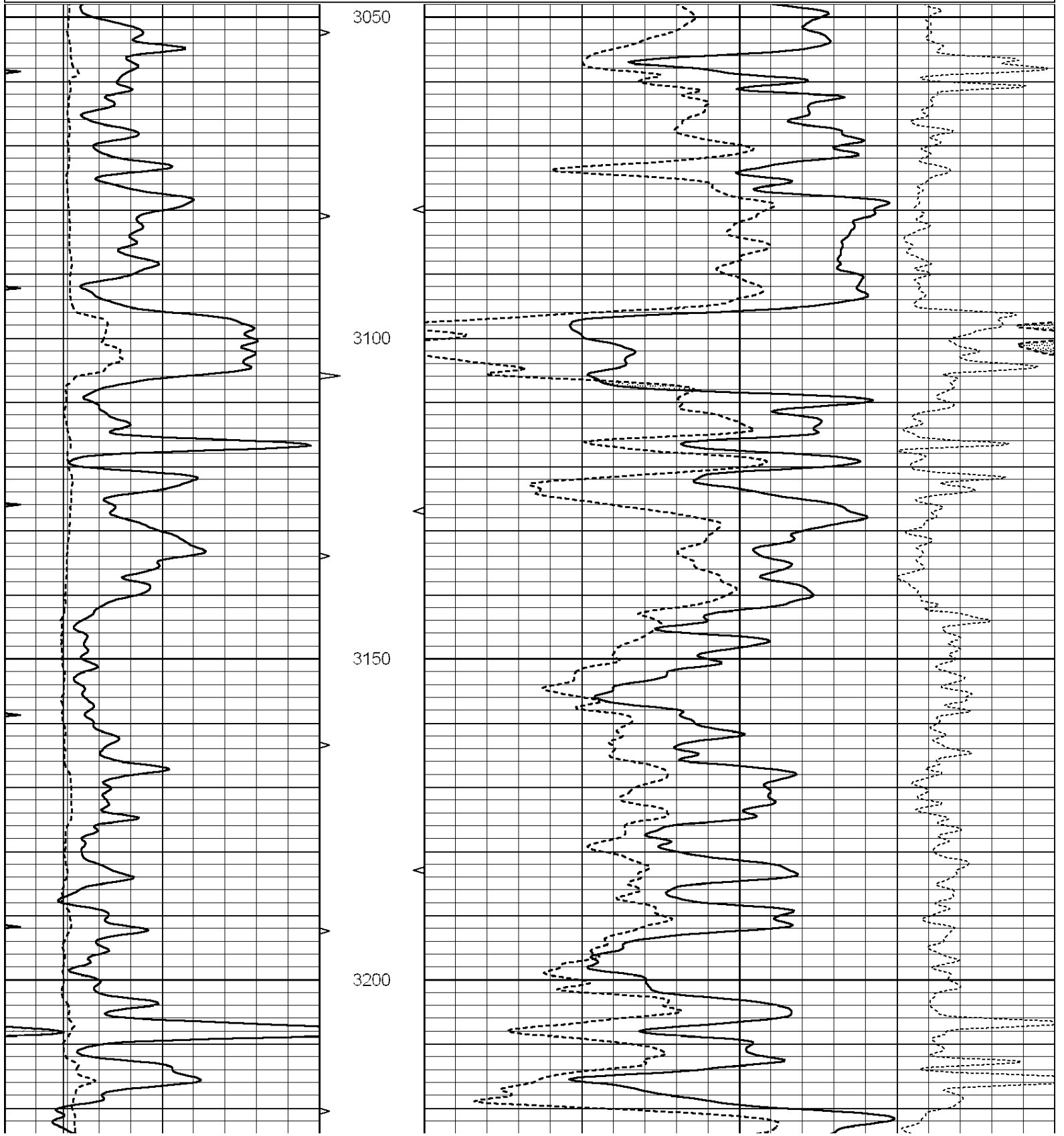


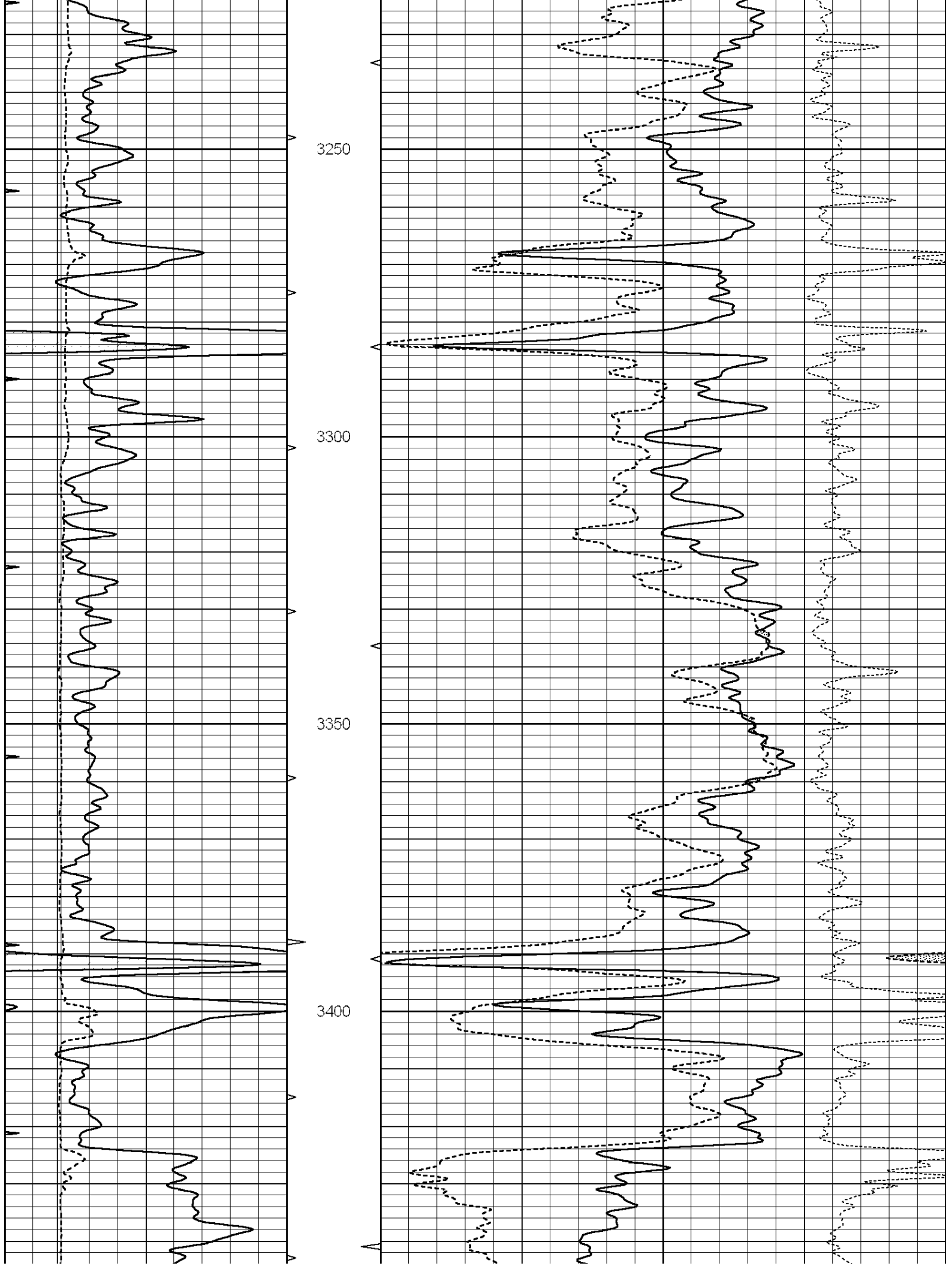
SUPERIOR
Hays,
Kansas

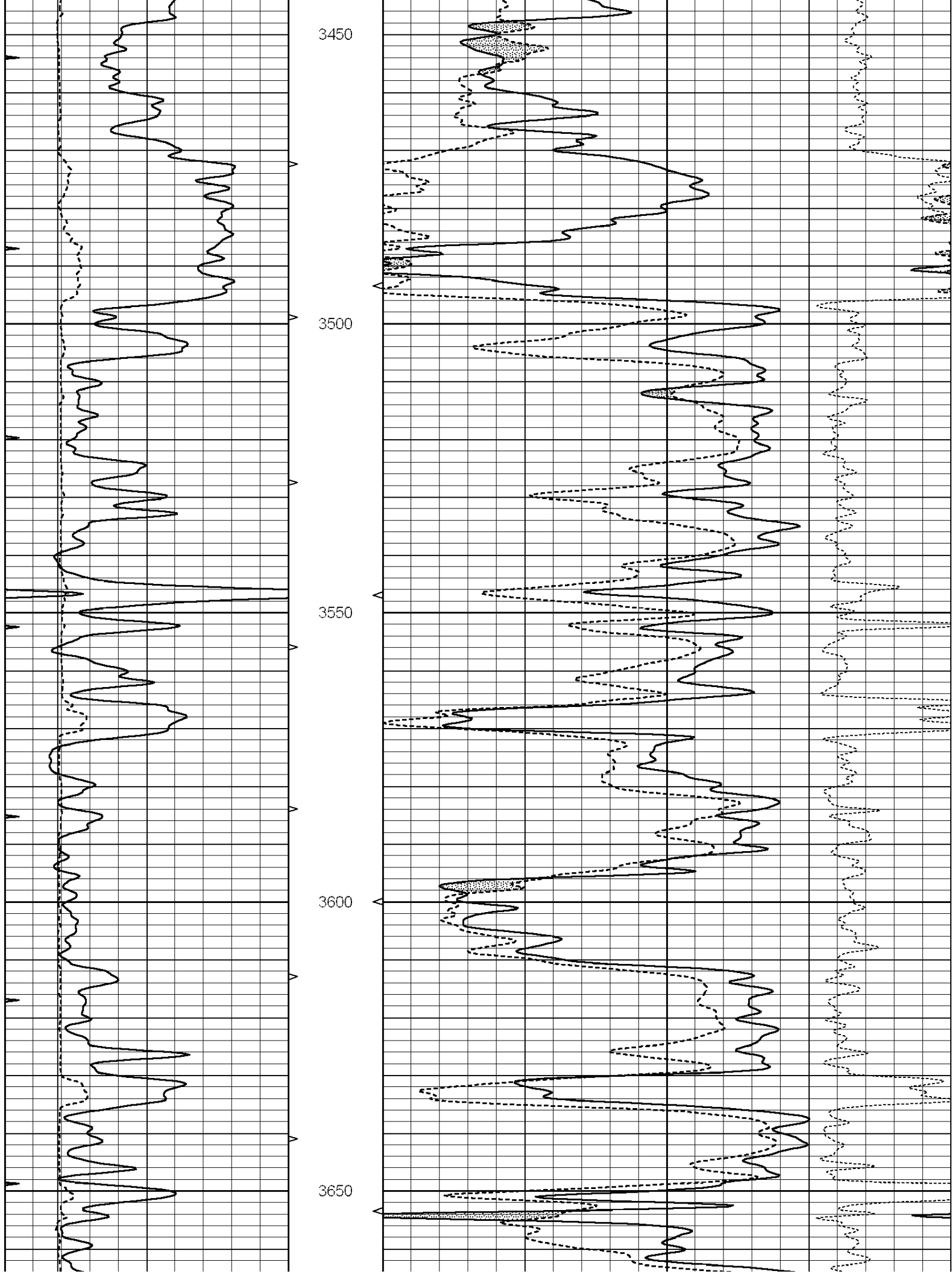
MAIN SECTION

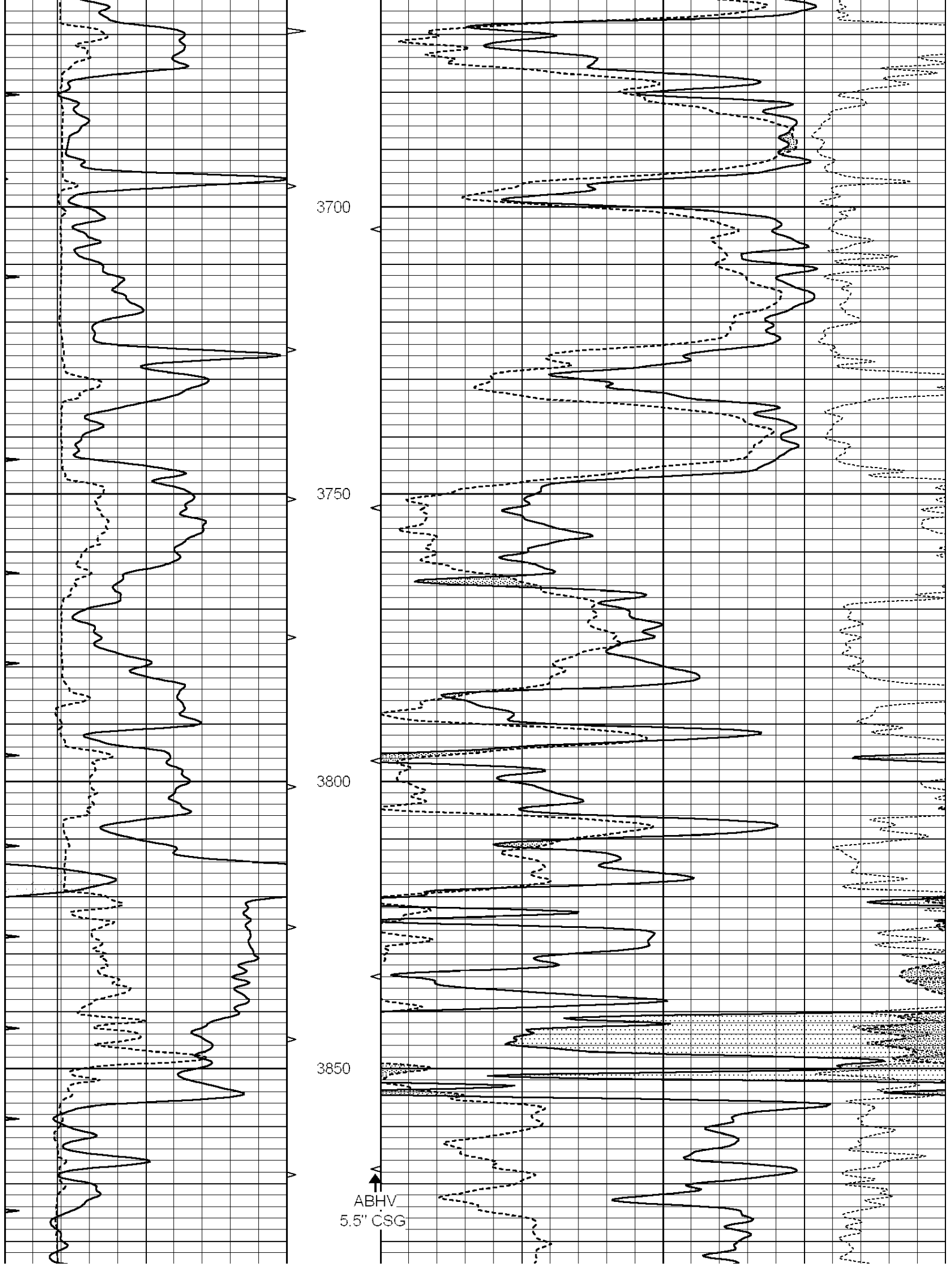
Database File: 009600ddn.db
 Dataset Pathname: pass3.1
 Presentation Format: _den_neu
 Dataset Creation: Sat Sep 08 10:16:02 2012 by Calc Open-Cased 090629
 Charted by: Depth in Feet scaled 1:240

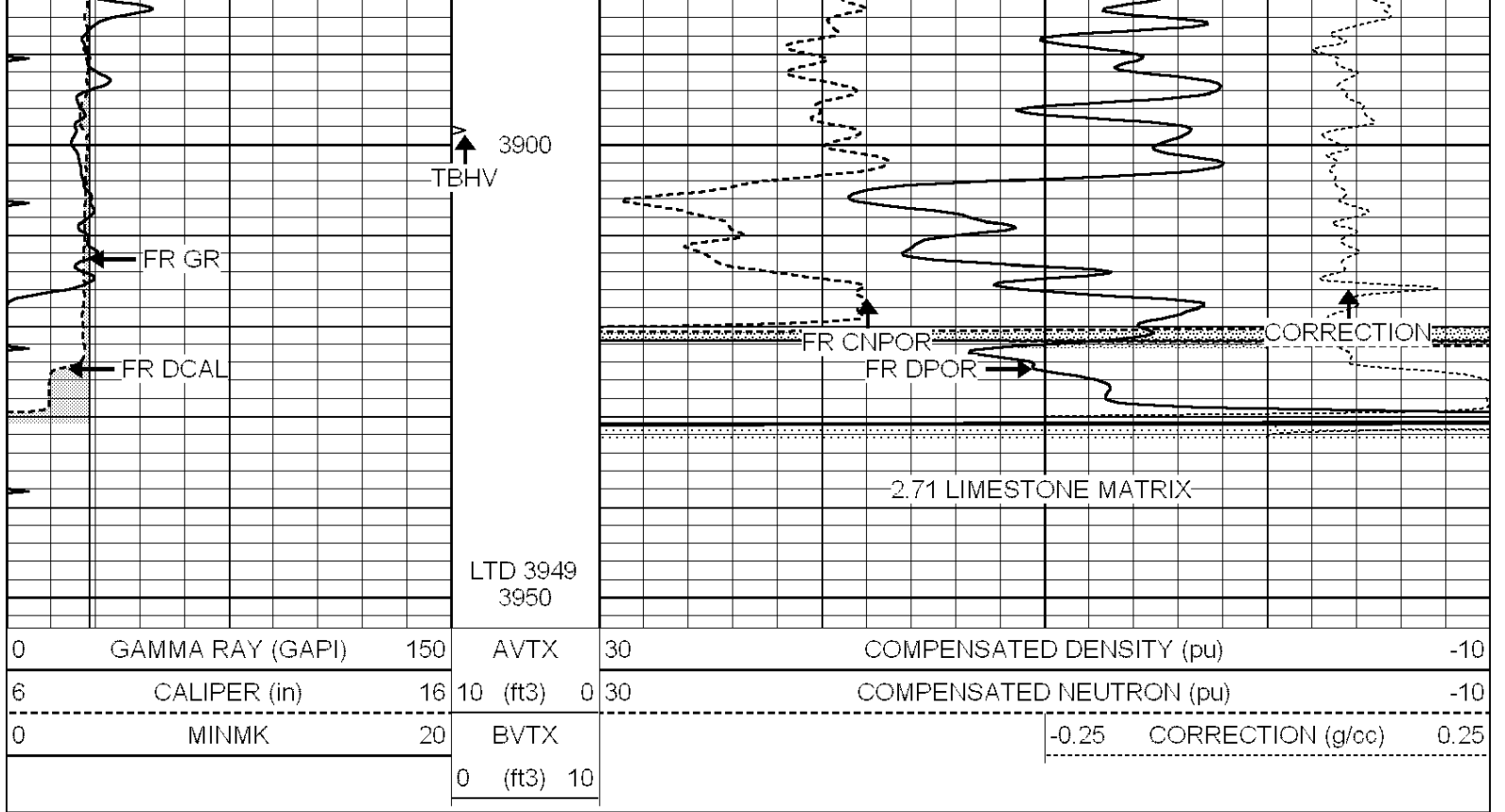
0	GAMMA RAY (GAPI)	150	AVTX	30	COMPENSATED DENSITY (pu)	-10
6	CALIPER (in)	16	10 (ft3)	0 30	COMPENSATED NEUTRON (pu)	-10
0	MINMK	20	BVTX		-0.25 CORRECTION (g/cc)	0.25
			0 (ft3)	10		









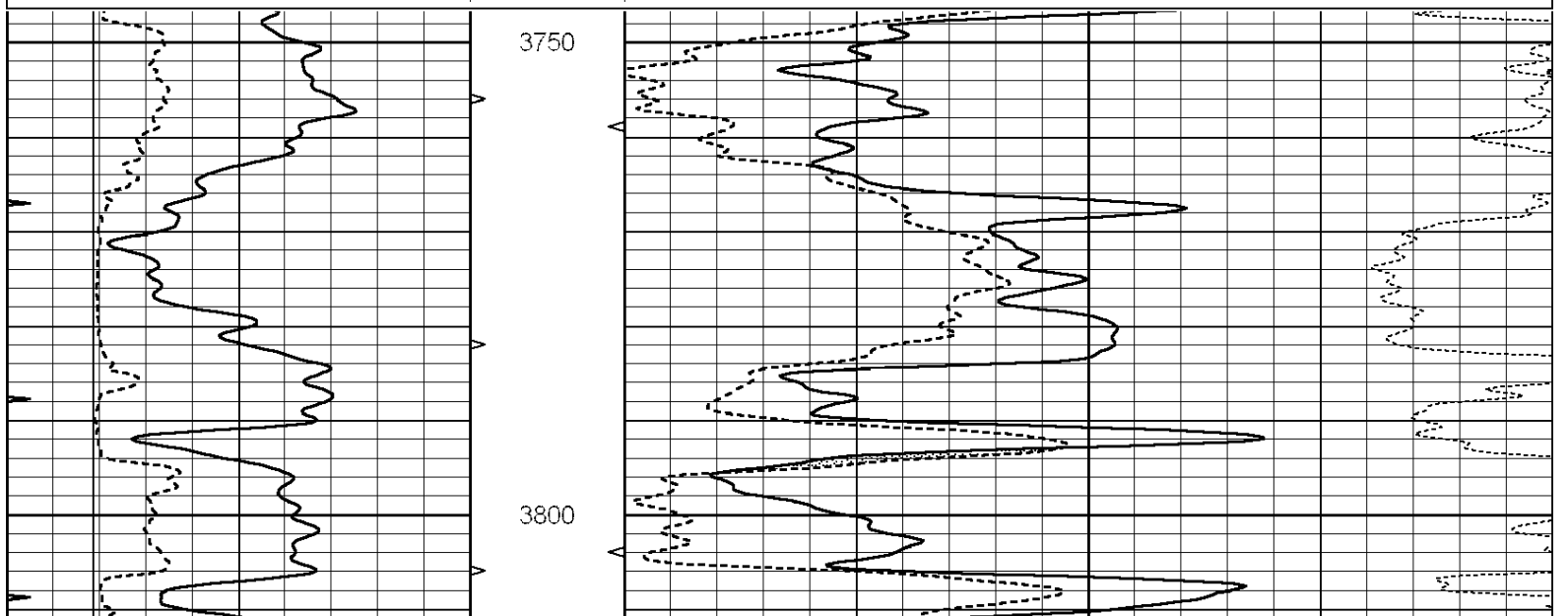


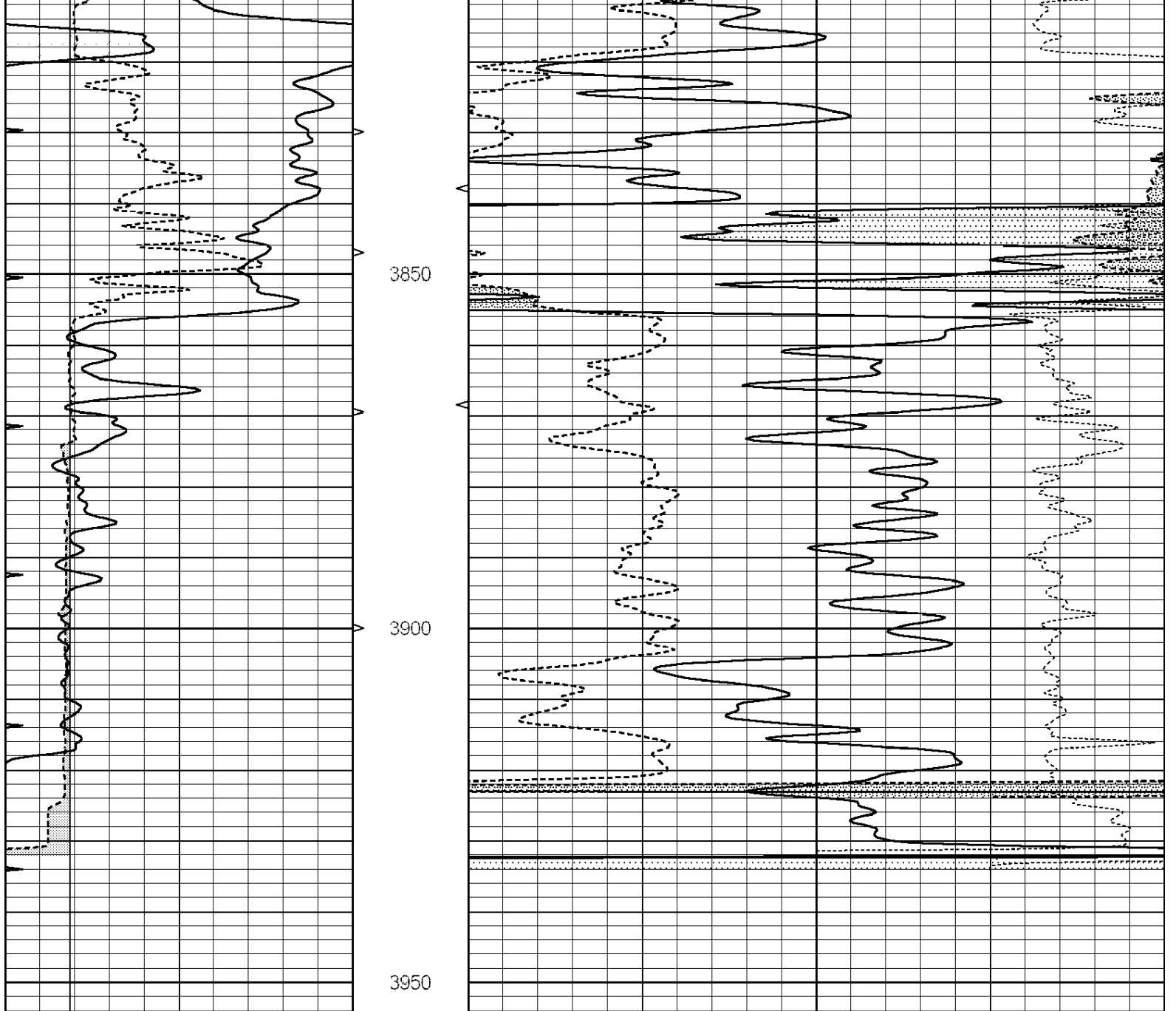
SUPERIOR
Hays,
Kansas

REPEAT SECTION

Database File: 009600ddn.db
 Dataset Pathname: pass2.1
 Presentation Format: _den_neu
 Dataset Creation: Sat Sep 08 09:52:32 2012 by Calc Open-Cased 090629
 Charted by: Depth in Feet scaled 1:240

0	GAMMA RAY (GAPI)	150	AVTX	30	COMPENSATED DENSITY (pu)	-10	
6	CALIPER (in)	16	10 (ft3)	0	30	COMPENSATED NEUTRON (pu)	-10
0	MINMK	20	BVTX		-0.25	CORRECTION (g/cc)	0.25
			0 (ft3)	10			





0	GAMMA RAY (GAPI)	150	AVTX	30	COMPENSATED DENSITY (pu)	-10
6	CALIPER (in)	16	10 (ft3)	0 30	COMPENSATED NEUTRON (pu)	-10
0	MINMK	20	BVTX		-0.25 CORRECTION (g/cc)	0.25
			0 (ft3)	10		

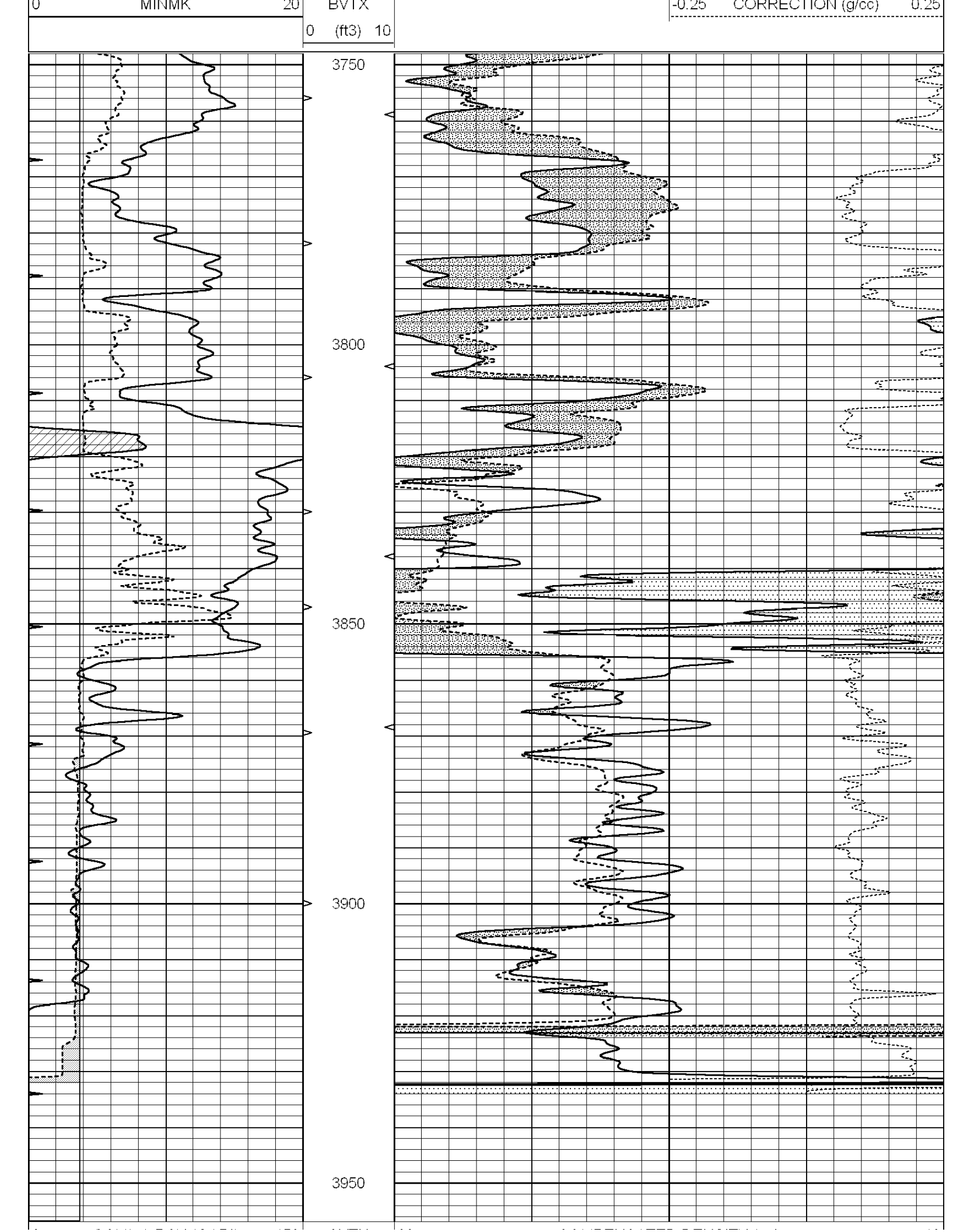


SUPERIOR
Hays,
Kansas

DOLOMITE MATRIX

Database File: 009600ddn.db
 Dataset Pathname: pass2.2
 Presentation Format: _den_neu
 Dataset Creation: Sat Sep 08 09:41:57 2012
 Charted by: Depth in Feet scaled 1:240

0	GAMMA RAY (GAPI)	150	AVTX	30	COMPENSATED DENSITY (pu)	-10
6	CALIPER (in)	16	10 (ft3)	0 30	COMPENSATED NEUTRON (pu)	-10
0	MINMK	20	BVTX		-0.25 CORRECTION (g/cc)	0.25
			0 (ft3)	10		



0	GAMMA RAY (GAPI)	150	AVIX	30	COMPENSATED DENSITY (pu)	-10	
6	CALIPER (in)	16	10 (ft3)	0	30	COMPENSATED NEUTRON (pu)	-10
0	MINMK	20	BVTX			-0.25 CORRECTION (g/cc)	0.25
			0 (ft3)	10			

Calibration Report

Database File: 009600ddn.db
 Dataset Pathname: pass3.1
 Dataset Creation: Sat Sep 08 10:16:02 2012 by Calc Open-Cased 090629

Dual Induction Calibration Report

Serial-Model: PROBE8-DILG
 Surface Cal Performed: Fri Aug 01 06:33:19 2008
 Downhole Cal Performed: Mon Jul 28 11:08:27 2008
 After Survey Verification Performed: Mon Jul 28 11:08:27 2008

Surface Calibration

Loop:	Readings			References			Results	
	Air	Loop		Air	Loop		m	b
Deep	0.015	0.648	V	0.000	400.000	mmho/m	632.616	-9.730
Medium	0.029	0.796	V	0.000	464.000	mmho/m	605.049	-17.680
Internal:	Zero	Cal		Zero	Cal		m	b
Deep	0.017	0.657	V	0.000	400.000	mmho/m	625.153	-10.619
Medium	0.016	0.757	V	0.000	464.000	mmho/m	625.992	-9.739

Downhole Calibration

	Readings			References			Results	
	Zero	Cal		Zero	Cal		m'	b'
Deep	0.000	0.000	mmho/m	2.011	405.777	mmho/m	1.000	0.000
Medium	0.000	0.000	mmho/m	7.590	503.393	mmho/m	1.000	0.000
LL3		7.500	V		1500.000	Ohm-m		
		0.000	V		20.000	Ohm-m		
		-7.200	V		3800.000	mmho-m		

After Survey Verification

	Readings			Targets			Results	
	Zero	Cal		Zero	Cal		m'	b'
Deep	0.000	0.000	mmho/m	0.000	0.000	mmho/m	0.000	0.000
Medium	0.000	0.000	mmho/m	0.000	0.000	mmho/m	0.000	0.000
LL3		1.000	Ohm-m		1.000	Ohm-m		
		0.000	Ohm-m		0.000	Ohm-m		
		1.000	mmho-m		1.000	mmho-m		

Compensated Density Calibration Report

Serial-Model: GEAR4-GEARHART
 Source / Verifier: 143 / 143
 Master Calibration Performed: Mon Mar 19 19:07:19 2012

Master Calibration

	Density		Far Detector	Near Detector	
Magnesium	1.710	g/cc	1015.91	497.51	cps
Aluminum	2.600	g/cc	227.67	350.20	cps

Spine Angle = 76.79

Density/Spine Ratio = 0.579

	Size		Reading	
Small Ring	8.00	in	3.21	V
Large Ring	14.00	in	5.46	V

Compensated Neutron Calibration Report

Serial Number:	6I
Tool Model:	G

CALIBRATION						
Detector	Readings		Target		Normalization	
Short Space	1.00	cps	1.00	cps	1.0000	
Long Space	1.00	cps	1.00	cps	1.0000	

Gamma Ray Calibration Report

Serial Number:	#8	
Tool Model:	OPEN	
Performed:	Mon Jun 13 16:56:43 2011	
Calibrator Value:	150.0	GAPI
Background Reading:	0.0	cps
Calibrator Reading:	175.0	cps
Sensitivity:	0.8371	GAPI/cps