



Pioneer Energy Services

Sonic Cement
Bond Log

15-063-22039-00-00

Company Shakespeare Oil Company, Inc.
Well Parsons No. 2-27
Field Wildcat
County Gove State Kansas

Location

2480' FNL & 1100' FWL

Other Services
Perforate

Sec: 27 Twp: 13S Rge: 31W

Permanent Datum Ground Level Elevation 2838
Log Measured From Kelly Bushing 10 Ft. Above Perm. Datum
Drilling Measured From Kelly Bushing

K.B. 2848
D.F. 2846
G.L. 2838

Run Number	One	
Date Survey	10/5/2012	
Date Cementing	9/29/2012	
Type Cementing Operation	Primary	
Depth Driller	4630	
Depth Logger	4584	
Logged Interval	4582 to 3100	to
Casing Driller	5.5 @ T.D.	@
Float Collar -- D.V. Tool	2309	
Squeeze Depth		
Amount & Type Cement		
Amount & Type Admix		
Type Fluid In Hole	Water	
Fluid Level	190	
Salinity PPM CL		
Weight lb/gal -- Vis.		
Approx. Logged Cement Top	3245	
Calculated Cement Top		
Max. Hole Temperature	119	
Tool No.	D-1	
Spacing Recorded	3-5	
Equipment -- Location	72 Hays	
Recorded By	K. Ladrigan	
Witnessed By	Tom Larson	

<<< Fold Here >>>

All interpretations are opinions based on inferences from electrical or other measurements and we cannot and do not guarantee the accuracy or correctness of any interpretation, and we shall not, except in the case of gross or willful negligence on our part, be liable or responsible for any loss, costs, damages, or expenses incurred or sustained by anyone resulting from any interpretation made by any of our officers, agents or employees. These interpretations are also subject to our general terms and conditions set out in our current Price Schedule.

Comments

Thank you for using Pioneer Energy Services, Inc. 785.625.3858

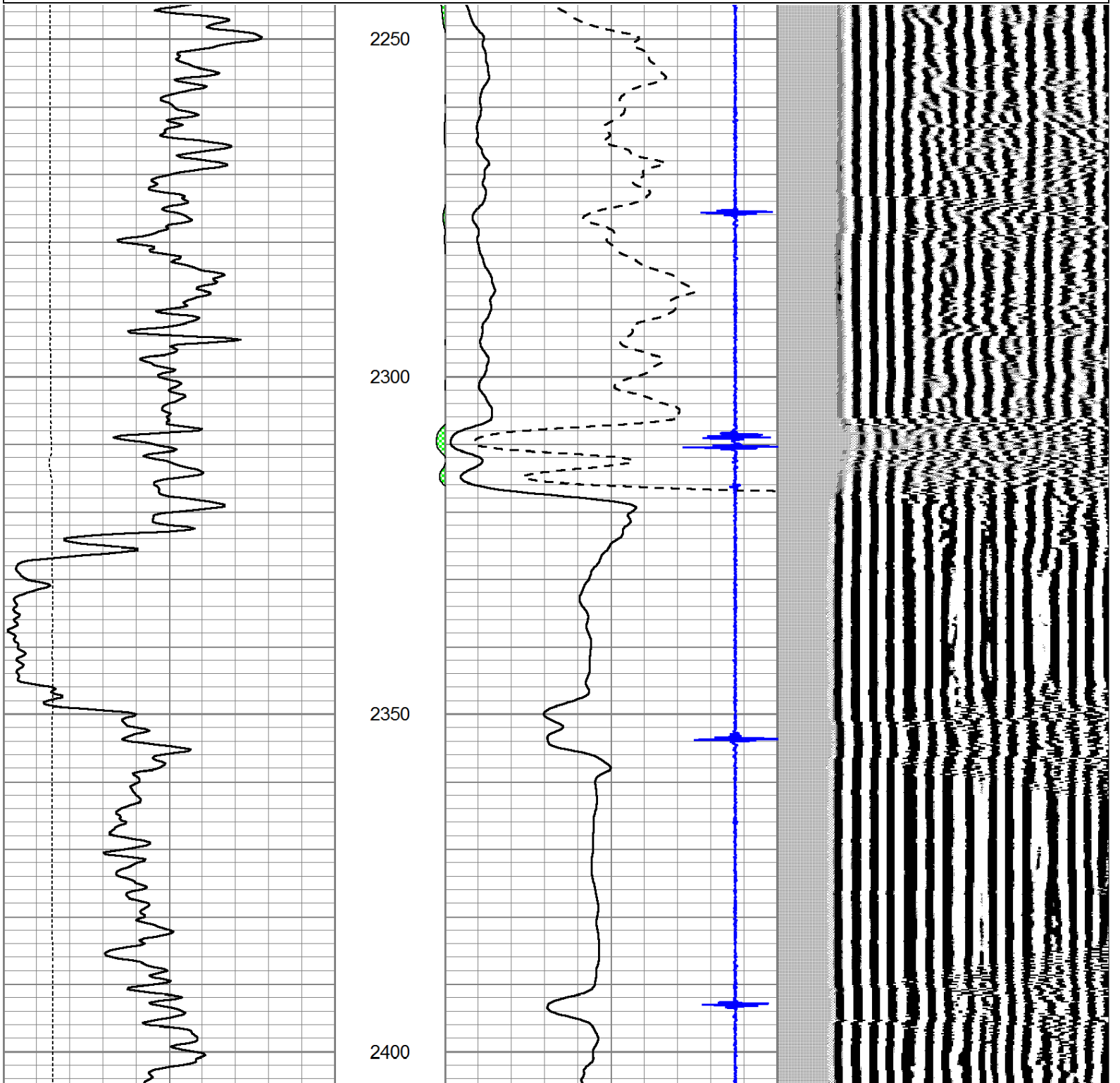
Oakley, KS., South on HWY 83 to Seneca Road (Gove Road)
5 East to 16 Road, 4 South to O Road, 1/2 South
East and North Into.



Port Collar @ 2309

Database File: shake-parsons2-27.db
 Dataset Pathname: Parsons2-/grcbl/pass4
 Presentation Format: cldig
 Dataset Creation: Fri Oct 05 09:22:43 2012 by Log SCH 111116
 Charted by: Depth in Feet scaled 1:240

0	GR (GAPI)	150	AMP3	0	Amplitude (mV)	100	200	Variable Density	1200
0	LTEN (lb)	5000	(mV)	0	Amplified Amplitude (mV)	20			
			-100 10	7	Collar Locator	-1			



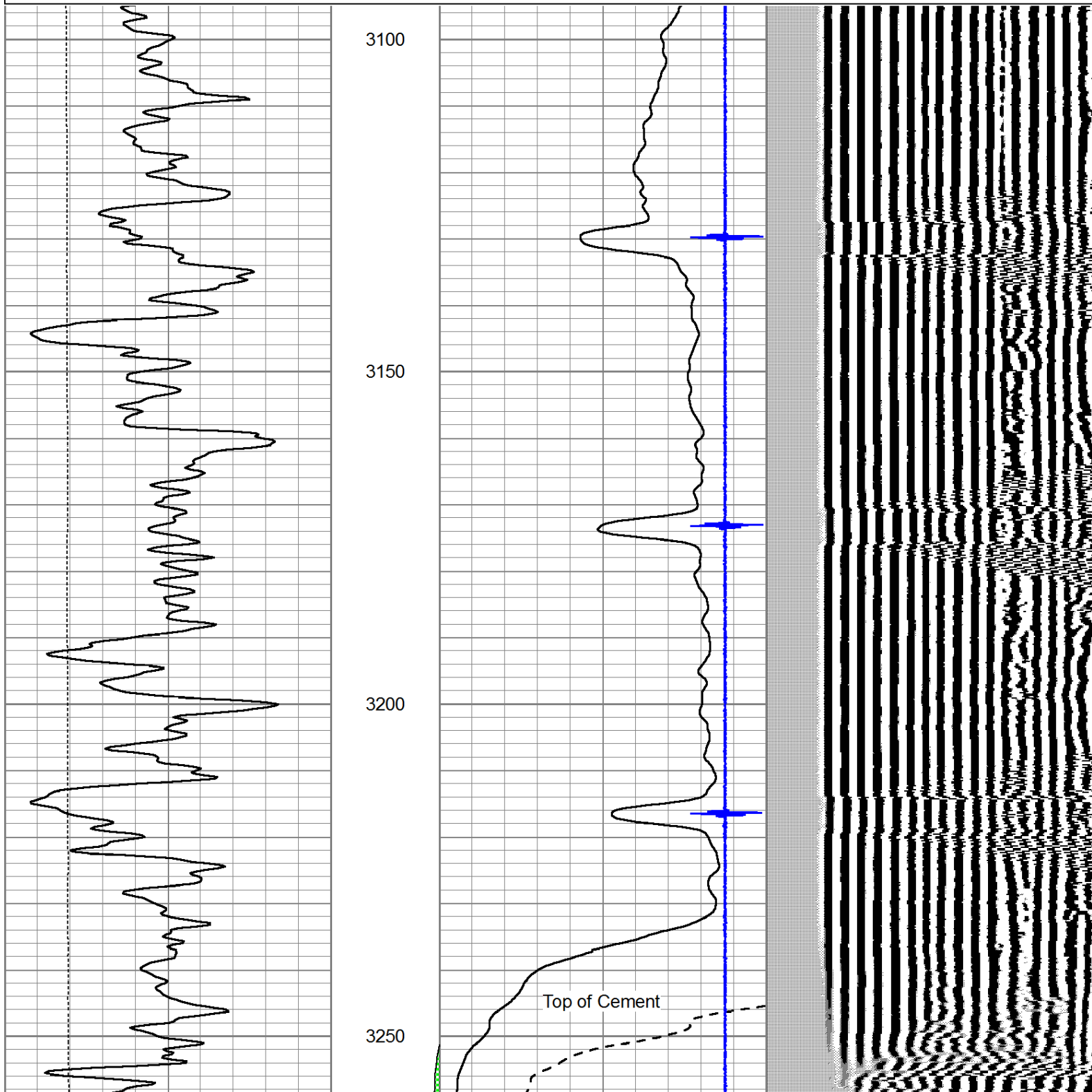
0	GR (GAPI)	150	AMP3	0	Amplitude (mV)	100	200	Variable Density	1200
0	LTEN (lb)	5000	(mV)	0	Amplified Amplitude (mV)	20			
			-100 10	7	Collar Locator	-1			

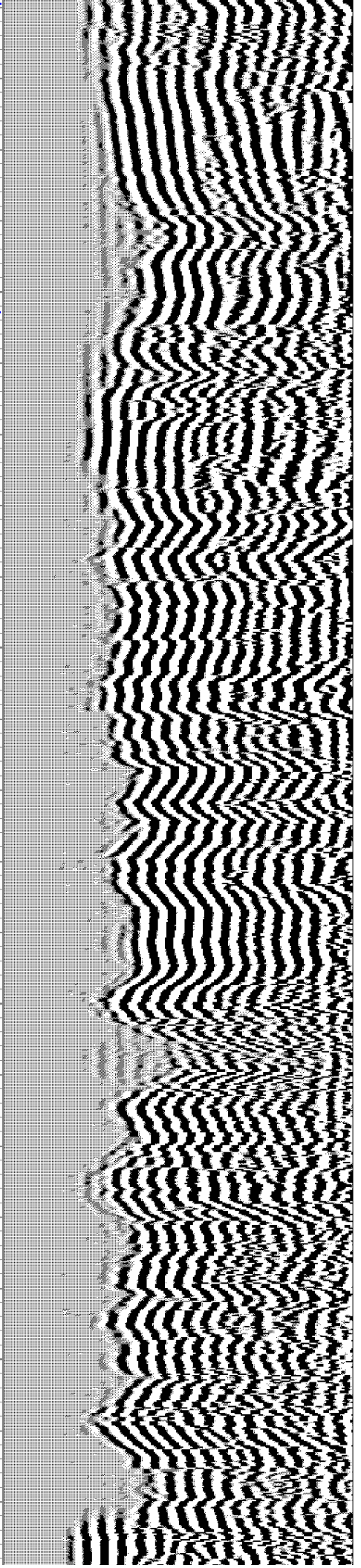
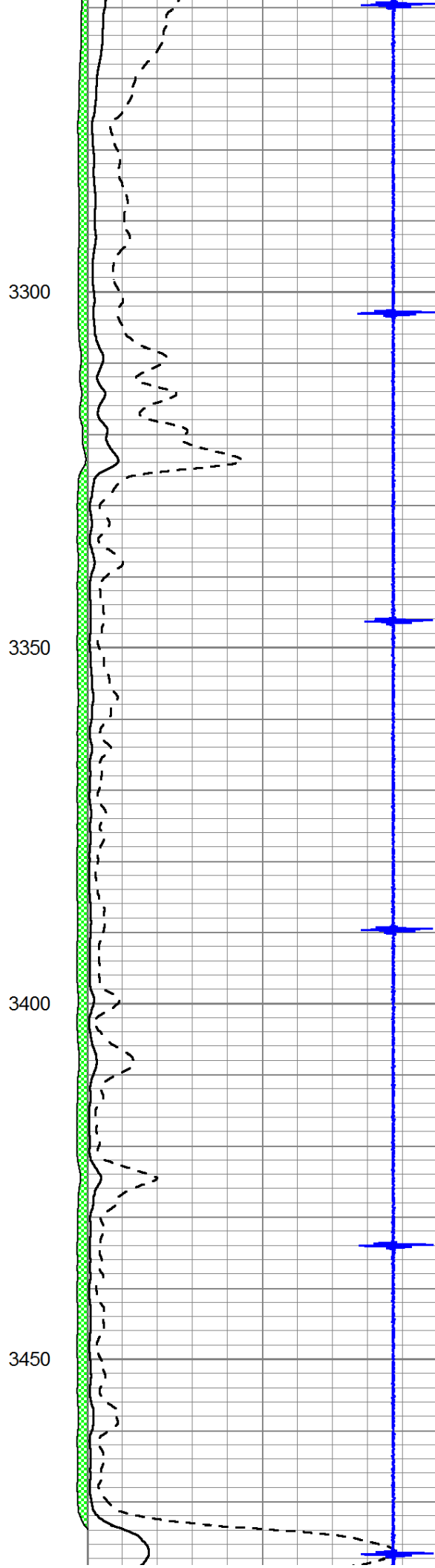
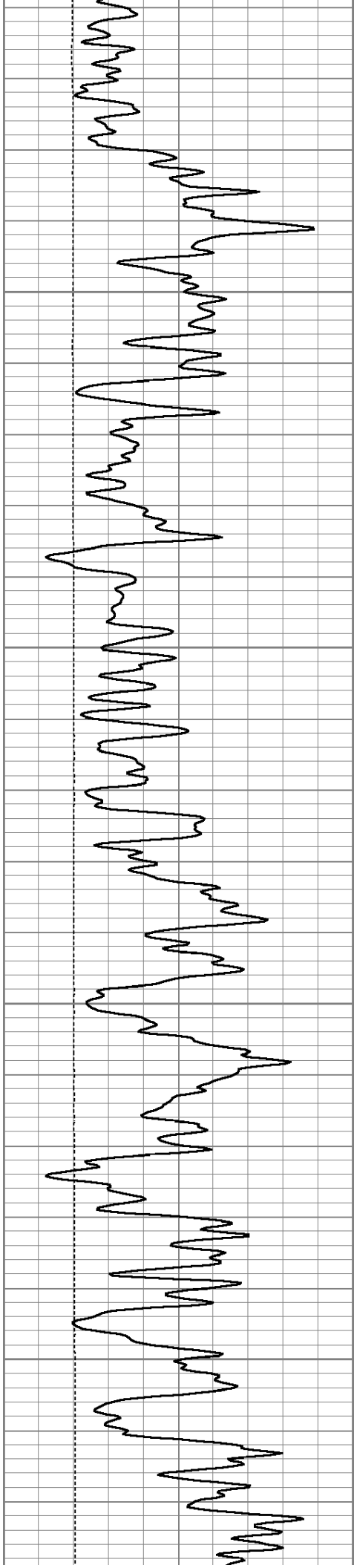
Main Pass

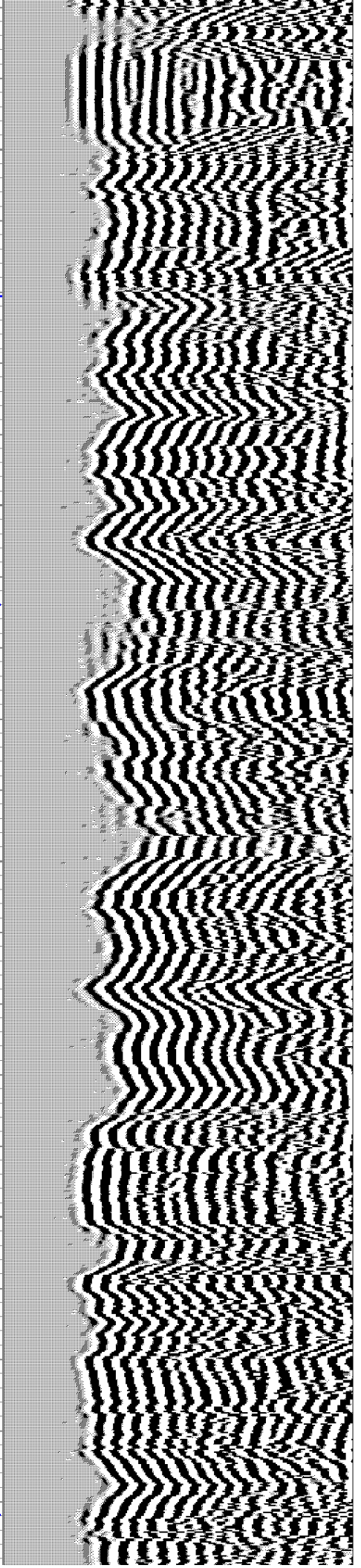
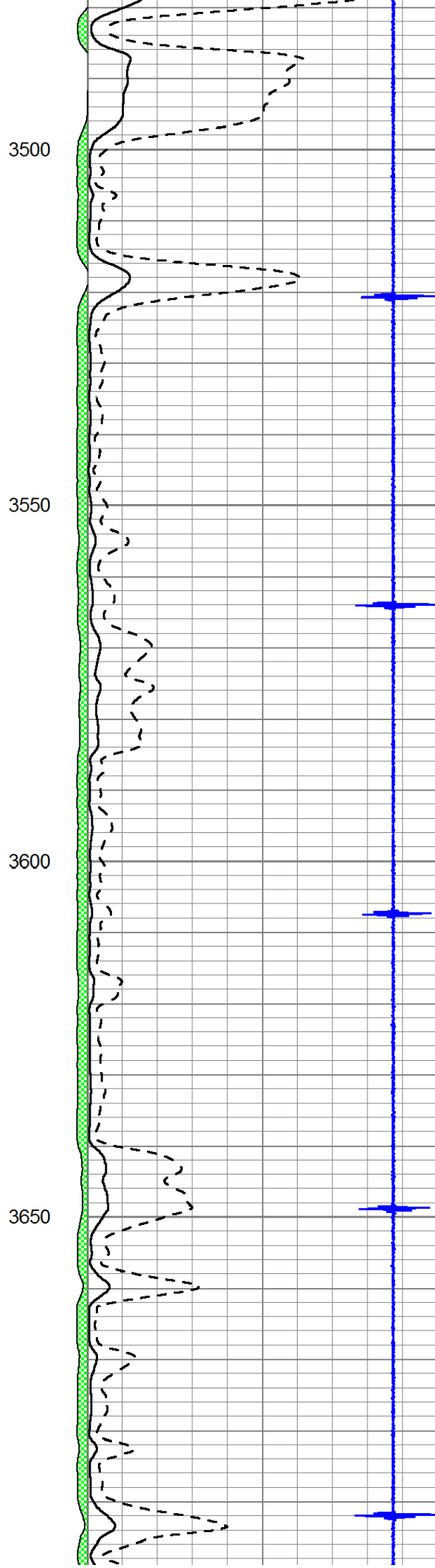
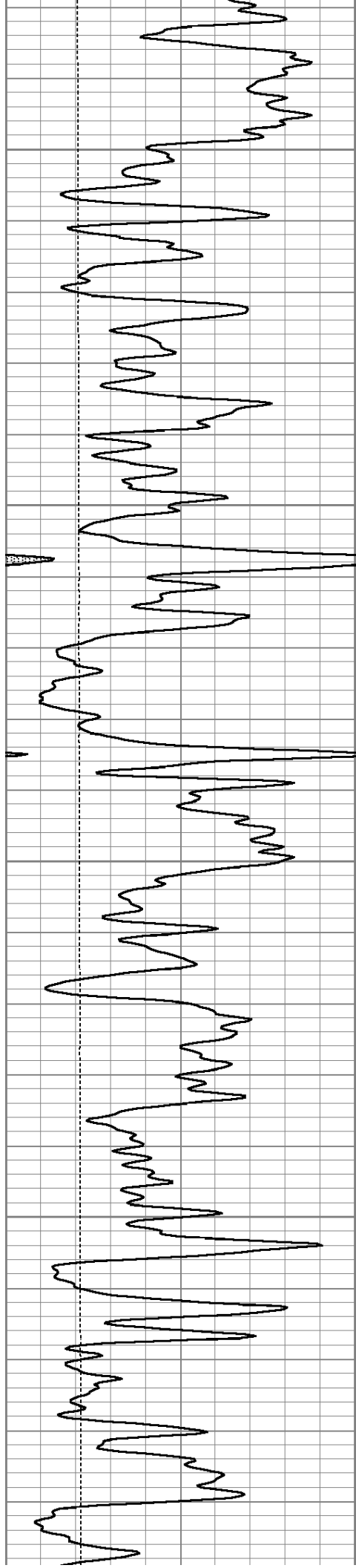
Pioneer Energy Services

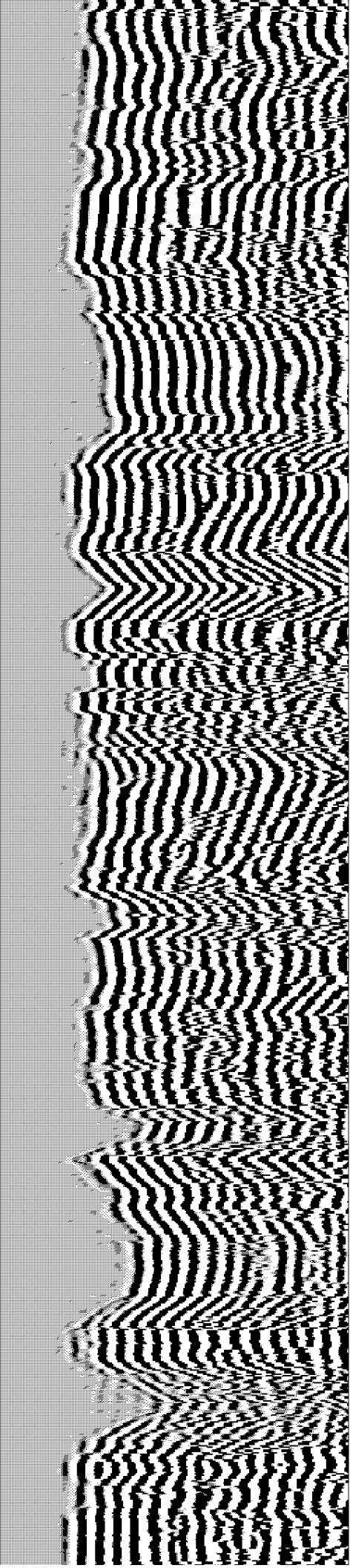
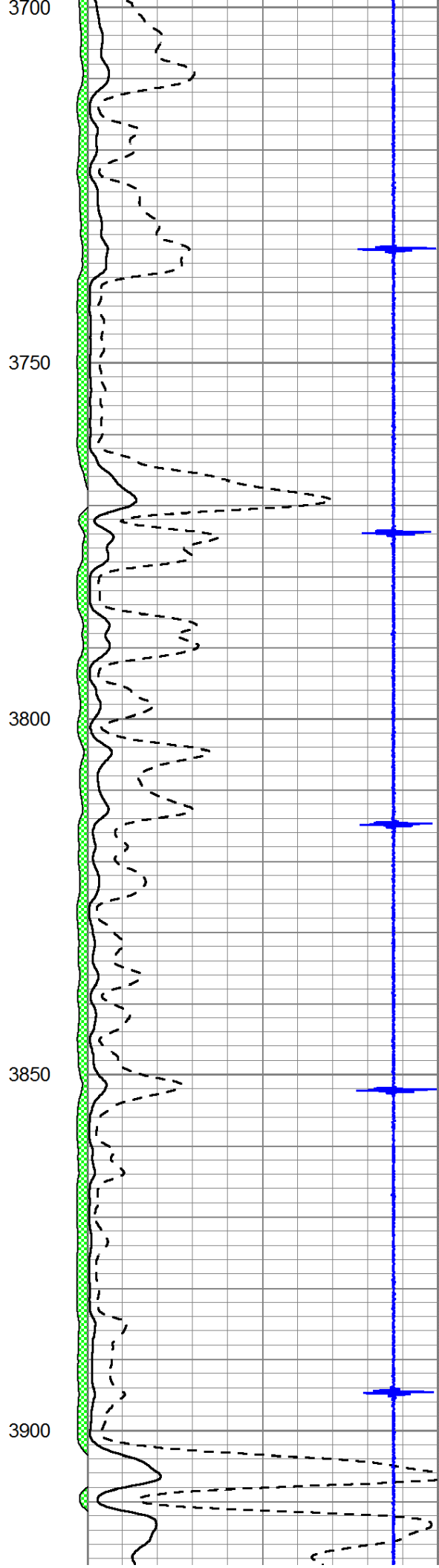
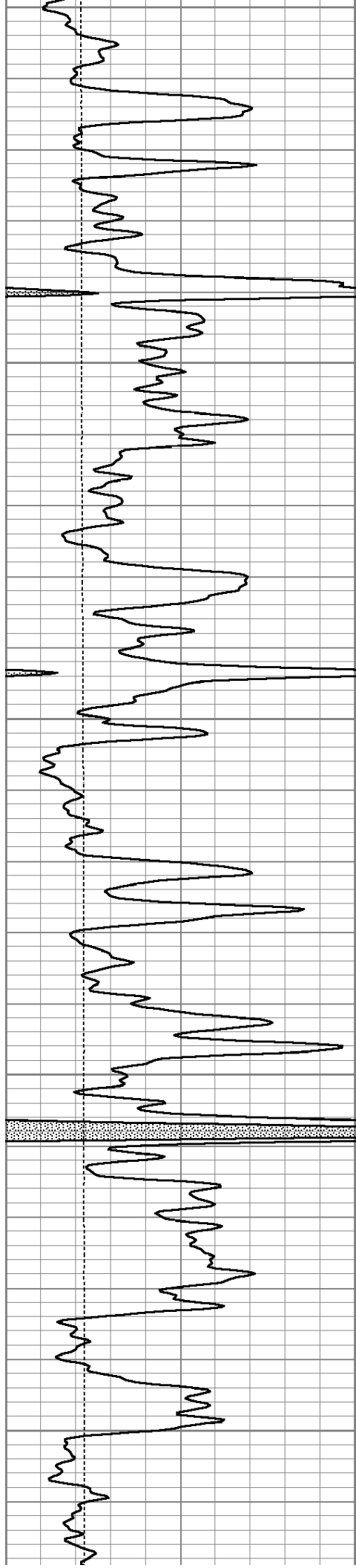
Database File: shake-parsons2-27.db
 Dataset Pathname: Parsons2-/grcbl/pass2.1
 Presentation Format: cbldig
 Dataset Creation: Fri Oct 05 09:34:19 2012
 Charted by: Depth in Feet scaled 1:240

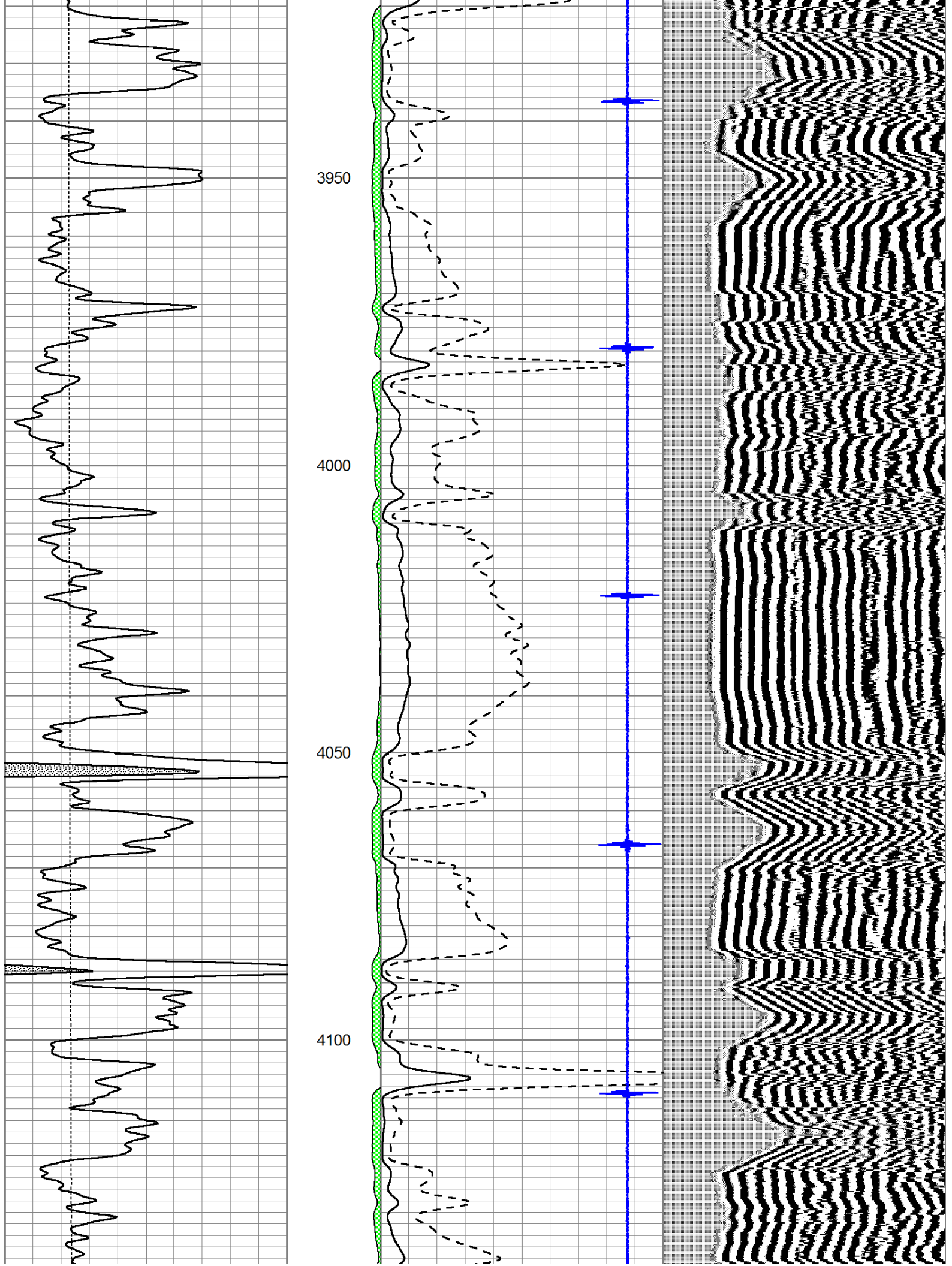
0	GR (GAPI)	150	AMP3	0	Amplitude (mV)	100	200	Variable Density	1200
0	LTEN (lb)	5000	(mV)	0	Amplified Amplitude (mV)	20			
			-100 10	7	Collar Locator	-1			

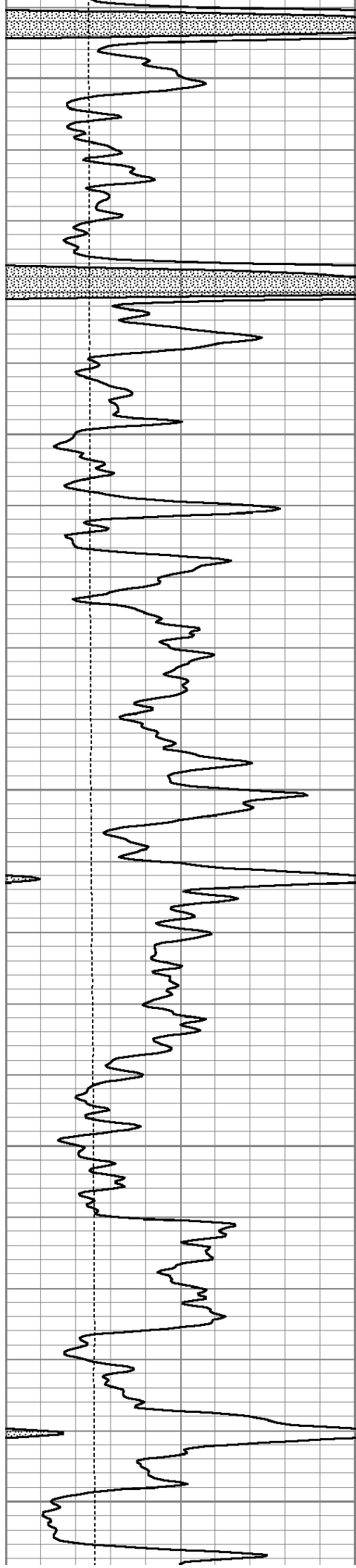












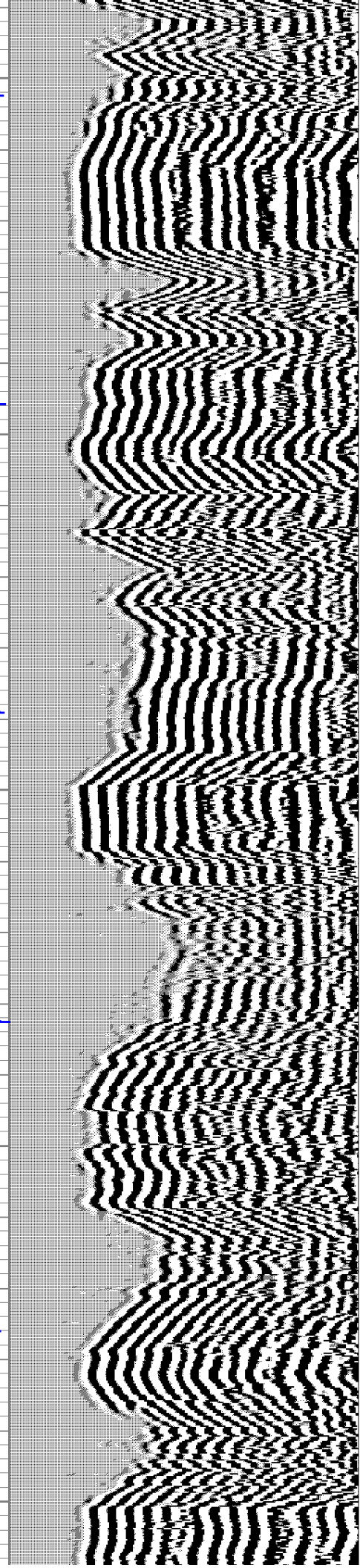
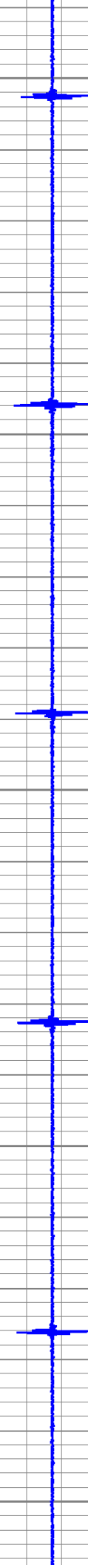
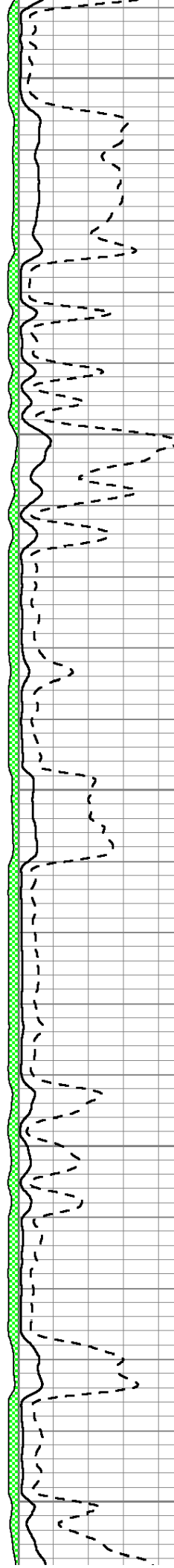
4150

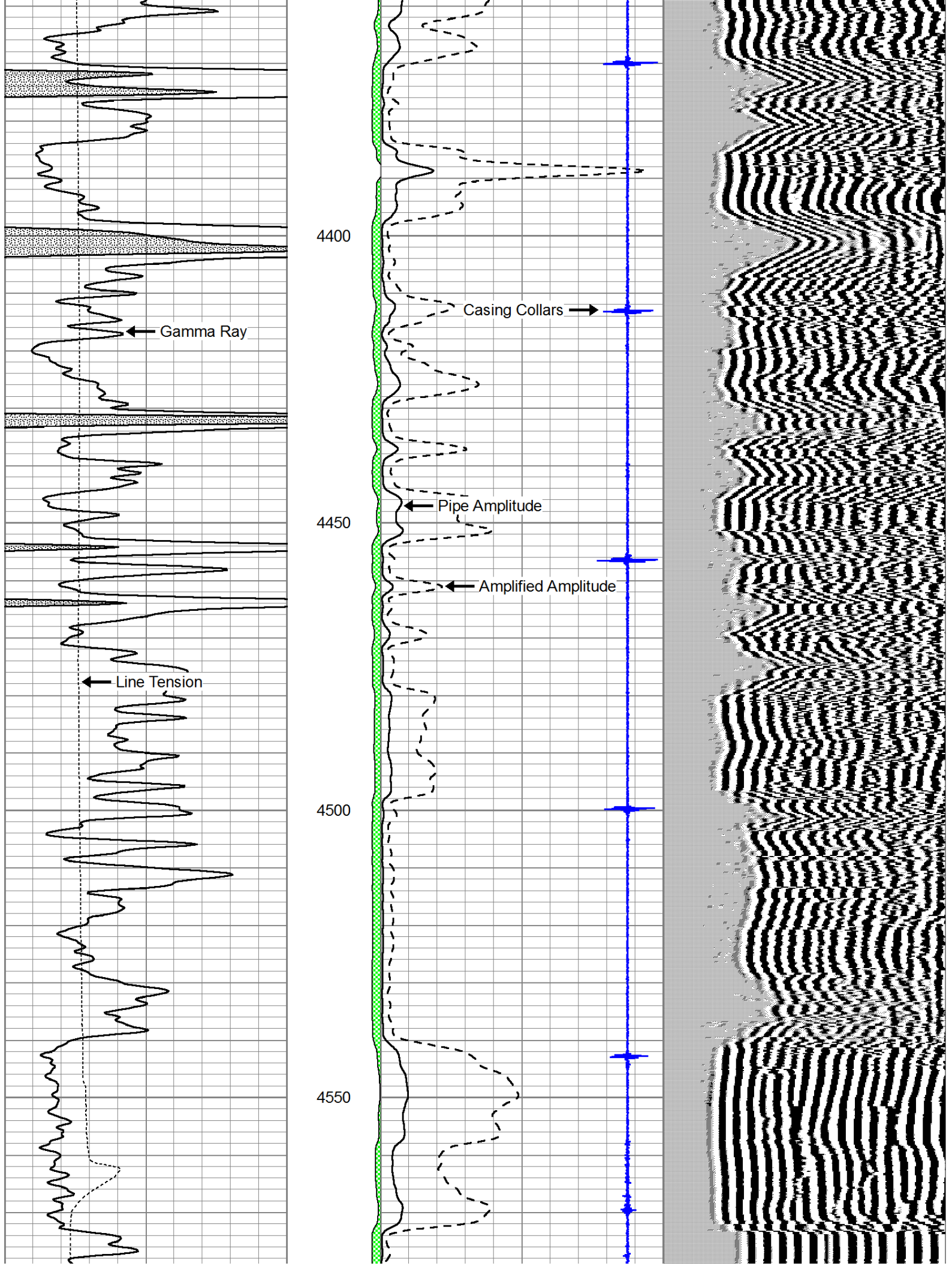
4200

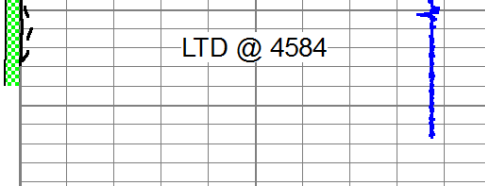
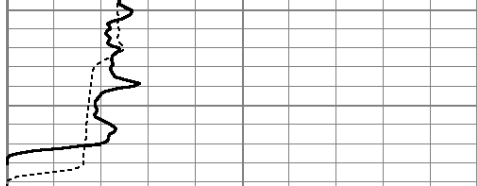
4250

4300

4350







0	GR (GAPI)	150	AMP3	0	Amplitude (mV)	100	200	Variable Density	1200
0	LTEN (lb)	5000	(mV)	0	Amplified Amplitude (mV)	20			
			-100 10	7	Collar Locator	-1			