



Pioneer Energy Services

Dual Induction Log

15-051-26,387-00-00

API No.

Company **TDI, Inc.**

Well **Moore Pond No.1**

Field

County **Eljis**

State

Kansas

Location **1660' FSL & 980' FWL**

Sec: **8**

Twp: **15S**

Rge: **19W**

Other Services
CNL/CDL
MEL

Permanent Datum **Ground Level**

Elevation **1991**

Log Measured From **Kelly Bushing**

10 Ft. Above Perm. Datum

Drilling Measured From **Kelly Bushing**

K.B. 2001
D.F.
G.L. 1991

Date

10/3/2012

Run Number

One

Depth Driller

3700

Depth Logger

3700

Bottom Logged Interval

3699

Top Log Interval

1250

Casing Driller

8.625 @ 1254

Casing Logger

1249

Bit Size

7.875

Type Fluid in Hole

Chemical

Salinity,ppm CL

4.000

Density / Viscosity

9.3

pH / Fluid Loss

10.5

Source of Sample

Flowline

Rm @ Meas. Temp

.8 @ 77

Rmf @ Meas. Temp

.6 @ 77

Rmc @ Meas. Temp

1.08 @ 77

Source of Rmf / Rmc

Charts

Rm @ BHT

.55 @ 113

Operating Rig Time

3 Hours

Max Rec. Temp. F

113

Equipment Number

17

Location

Hays

Recorded By

C. Desaire

Witnessed By

Tom Denning

Herb Deines

<<< Fold Here >>>

All interpretations are opinions based on inferences from electrical or other measurements and we cannot and do not guarantee the accuracy or correctness of any interpretation, and we shall not, except in the case of gross or willful negligence on our part, be liable or responsible for any loss, costs, damages, or expenses incurred or sustained by anyone resulting from any interpretation made by any of our officers, agents or employees. These interpretations are also subject to our general terms and conditions set out in our current Price Schedule.

Comments

Thank you for using Pioneer Energy Services
www.pioneerenergy.com
785 625 3858

Antonino KS, 3 W, 2 S,
3/4 W, N Into

Database File: c:\warrior\data\tdi_moore pond #1\tdihd.db
Dataset Pathname: dil\tdistk
Presentation Format: dil2in
Dataset Creation: Wed Oct 03 14:22:04 2012
Charted by: Depth in Feet scaled 1:600

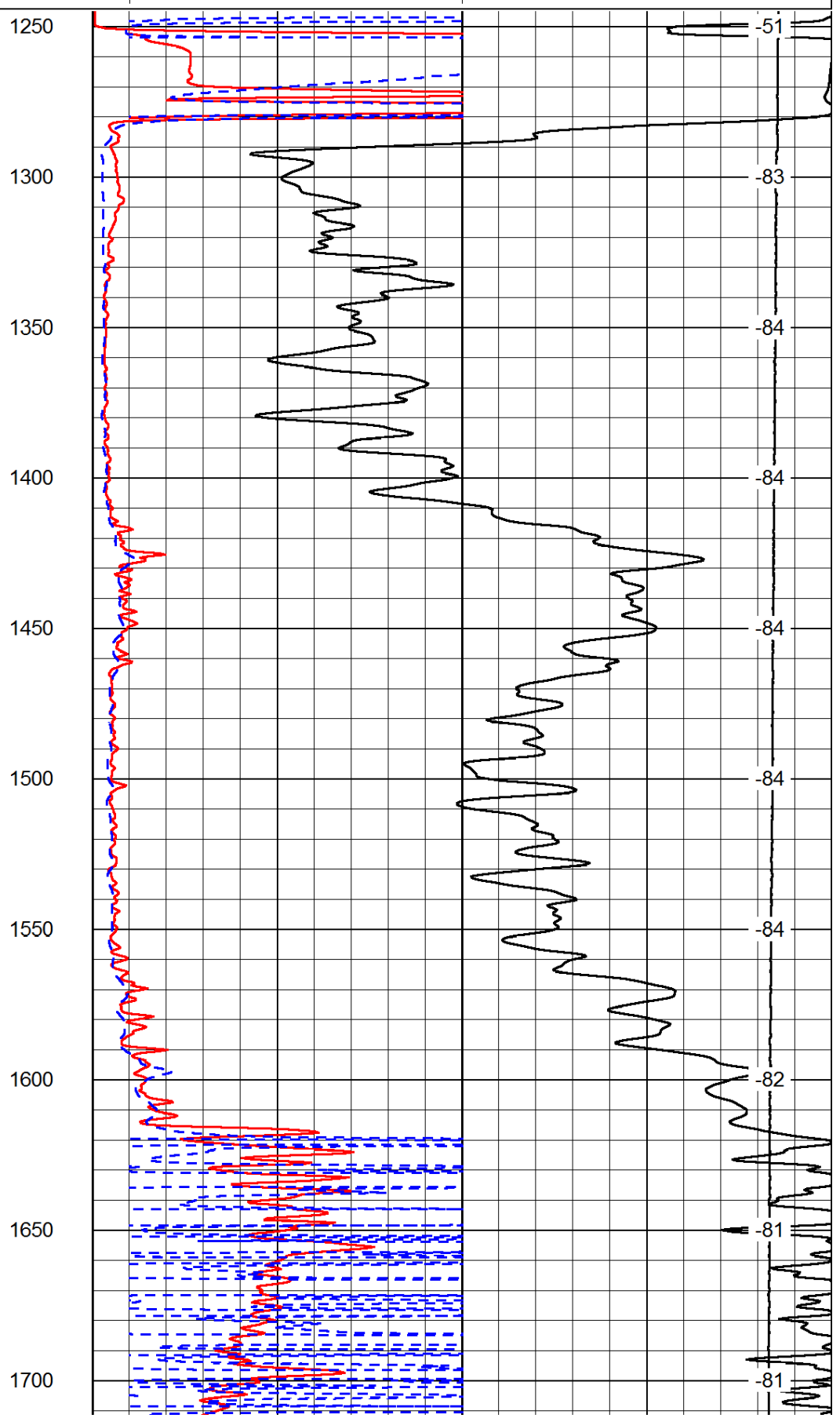
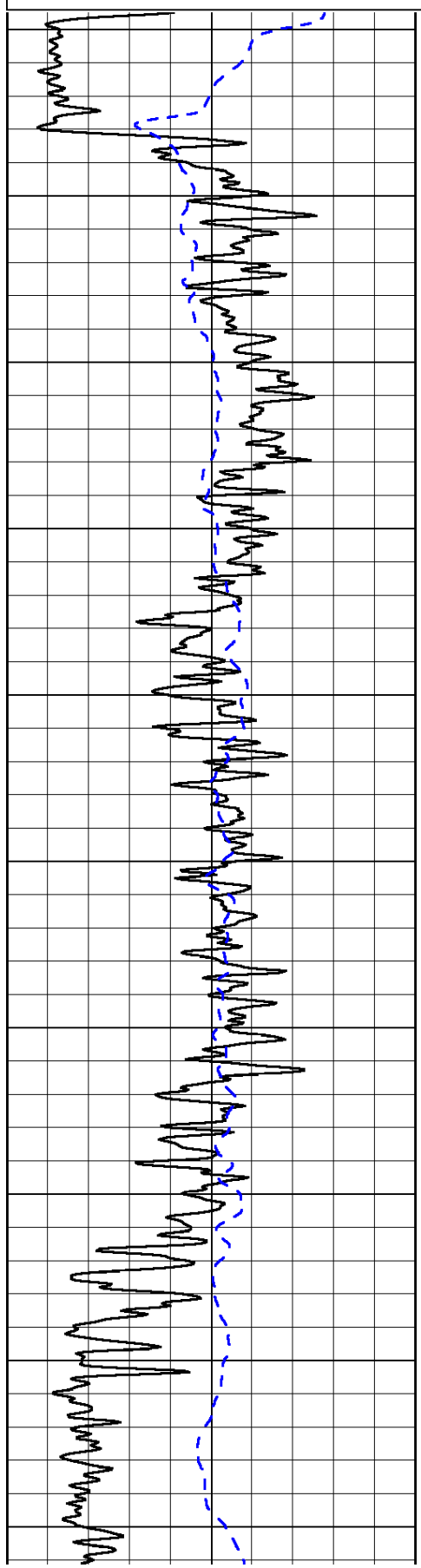
| | | |
|------|-----------|-----|
| 0 | Gamma Ray | 150 |
| -200 | SP (mV) | 0 |

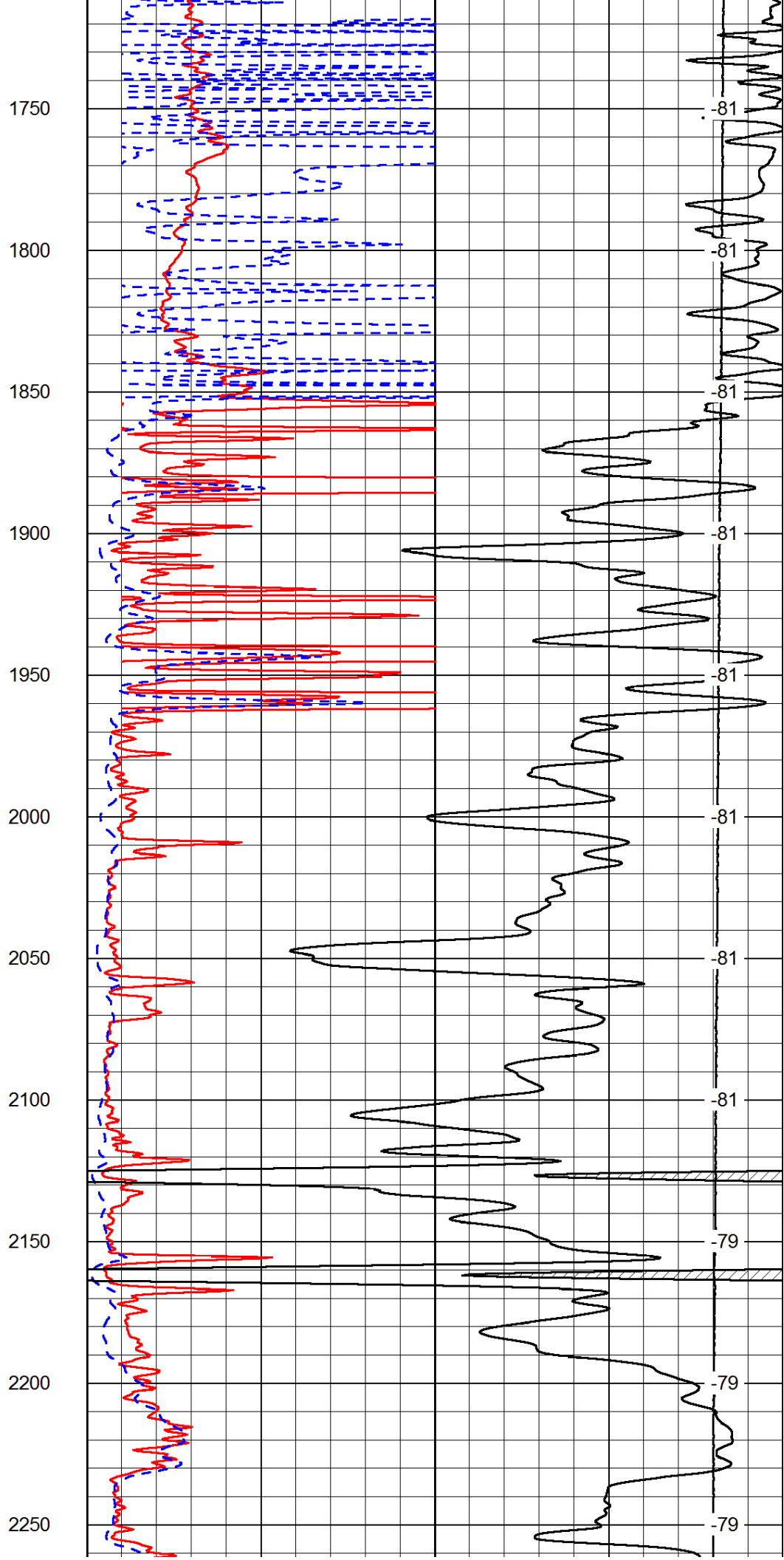
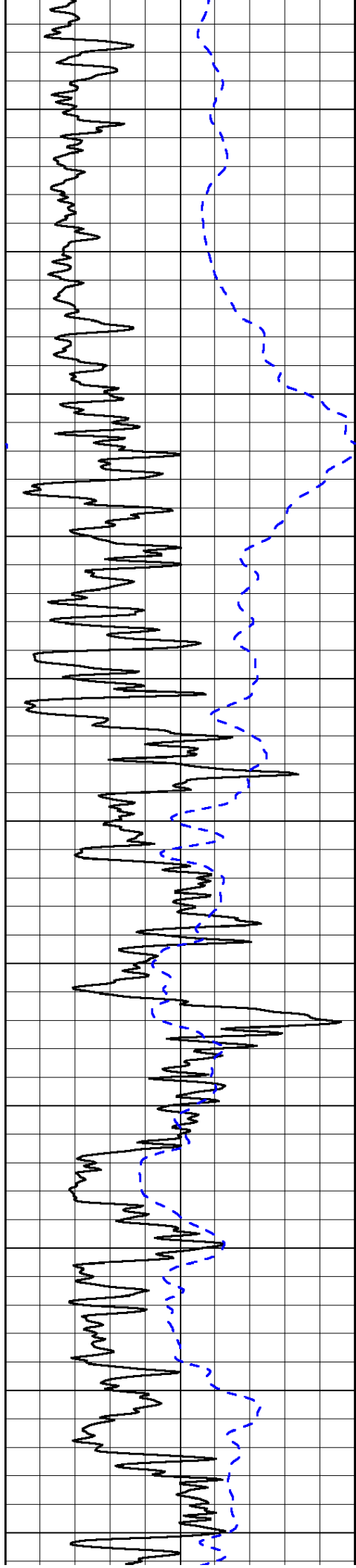
| | | |
|---|---------------------|----|
| 0 | Shallow Resistivity | 50 |
| 0 | Deep Resistivity | 50 |

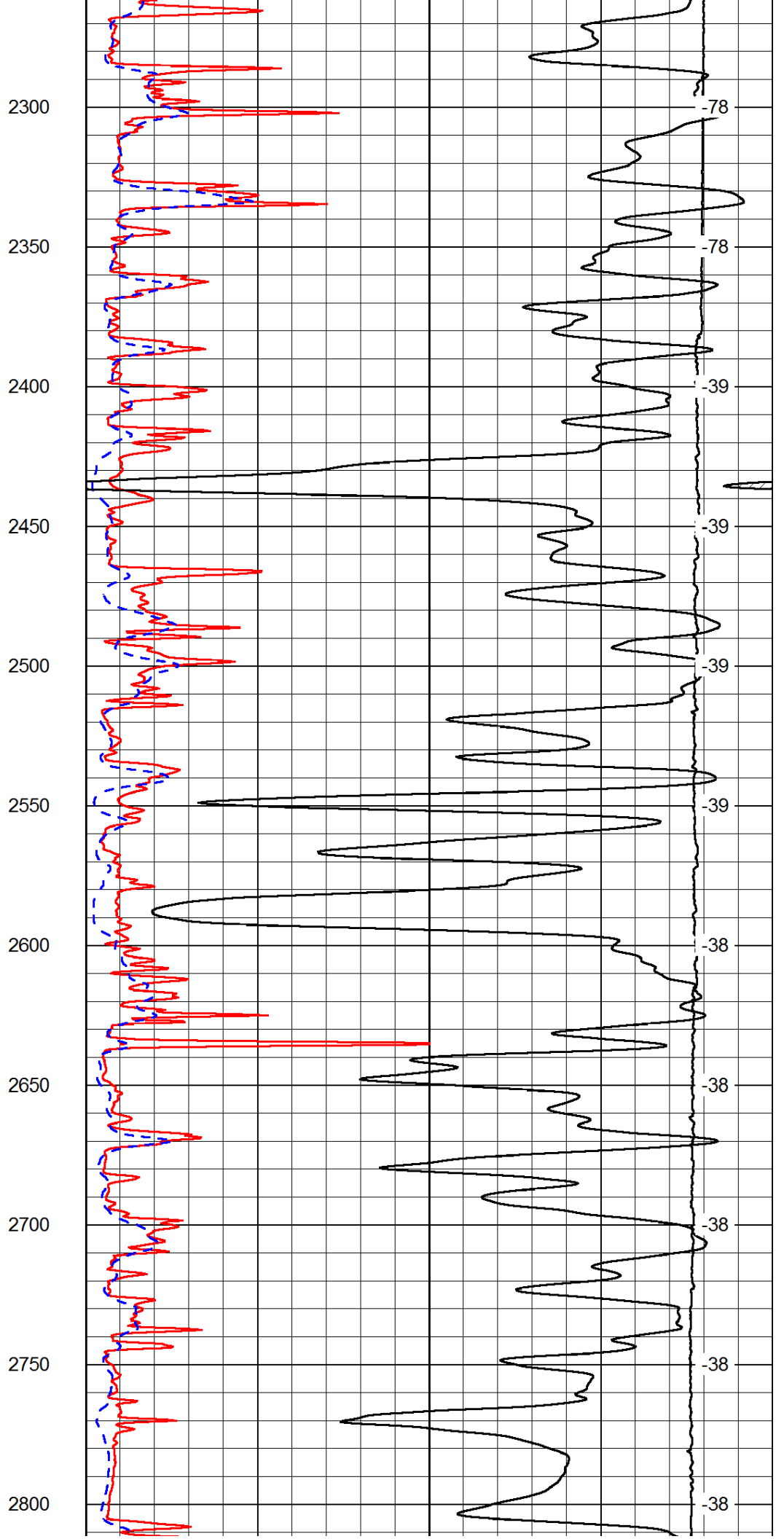
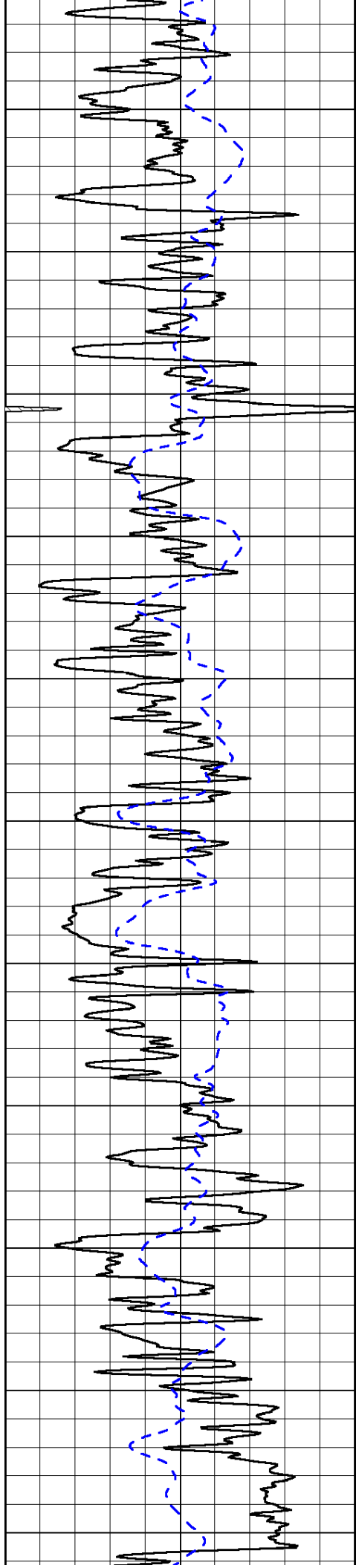
LSPD

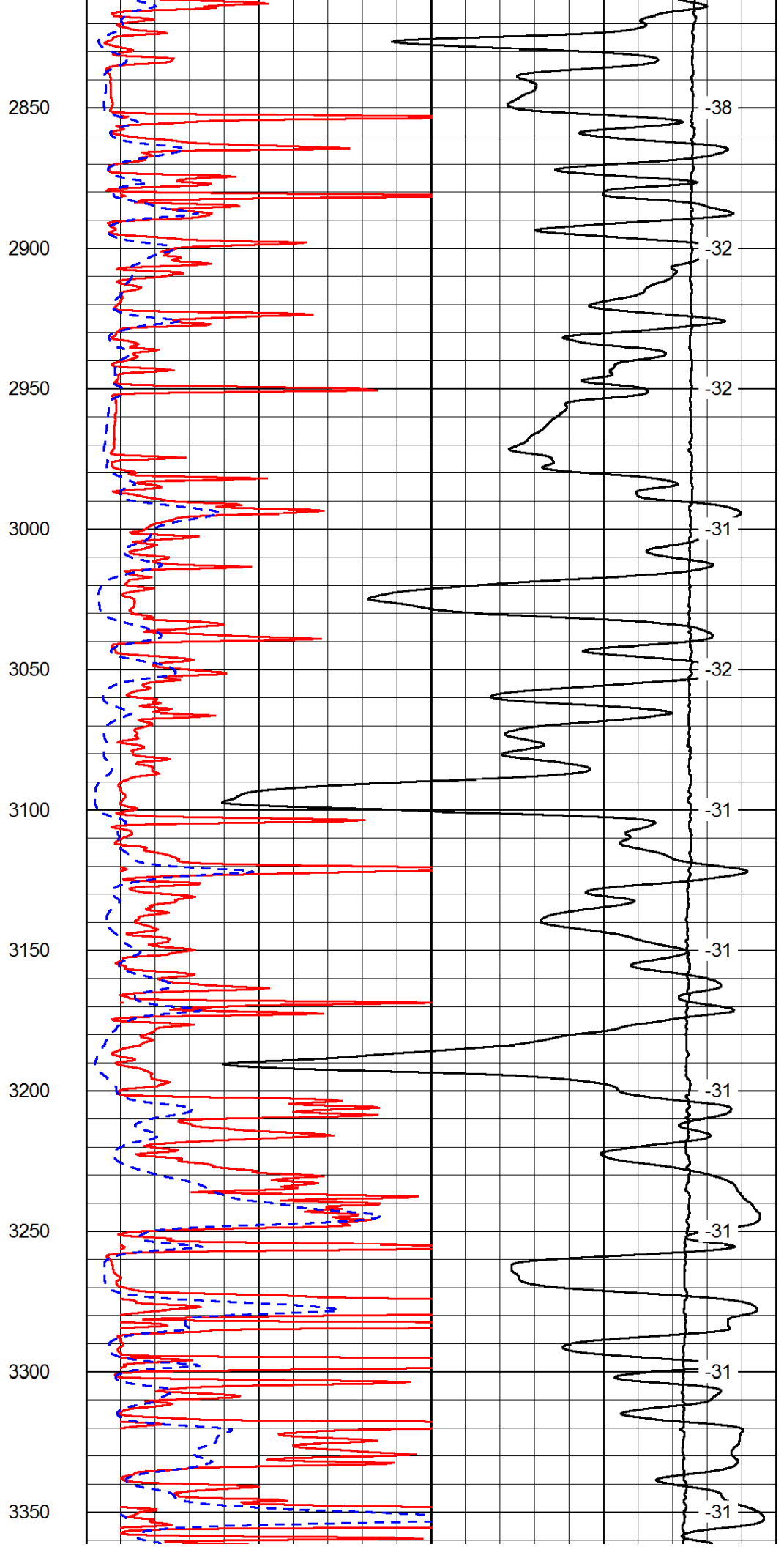
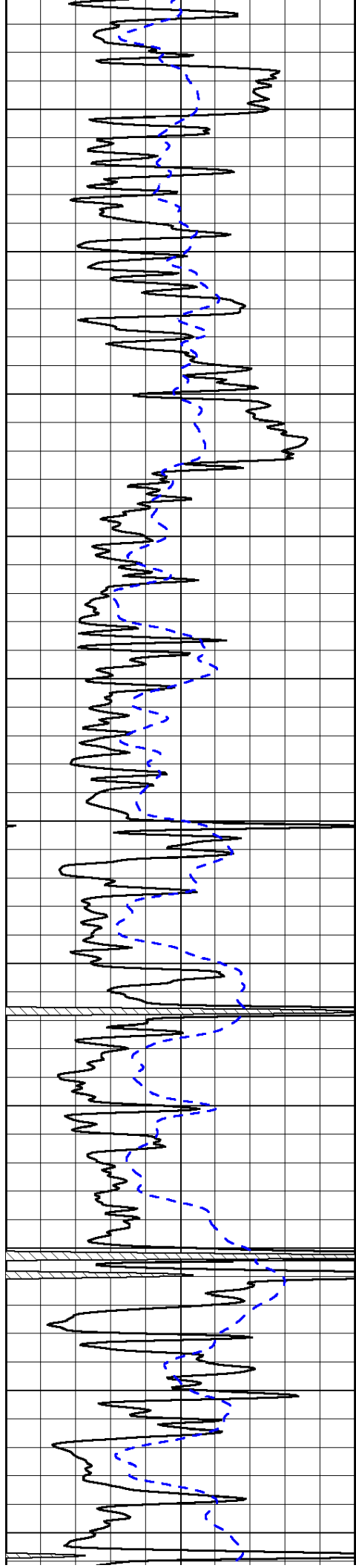
| | | |
|-------|--------------|---|
| 1000 | Conductivity | 0 |
| 15000 | Line Tension | 0 |

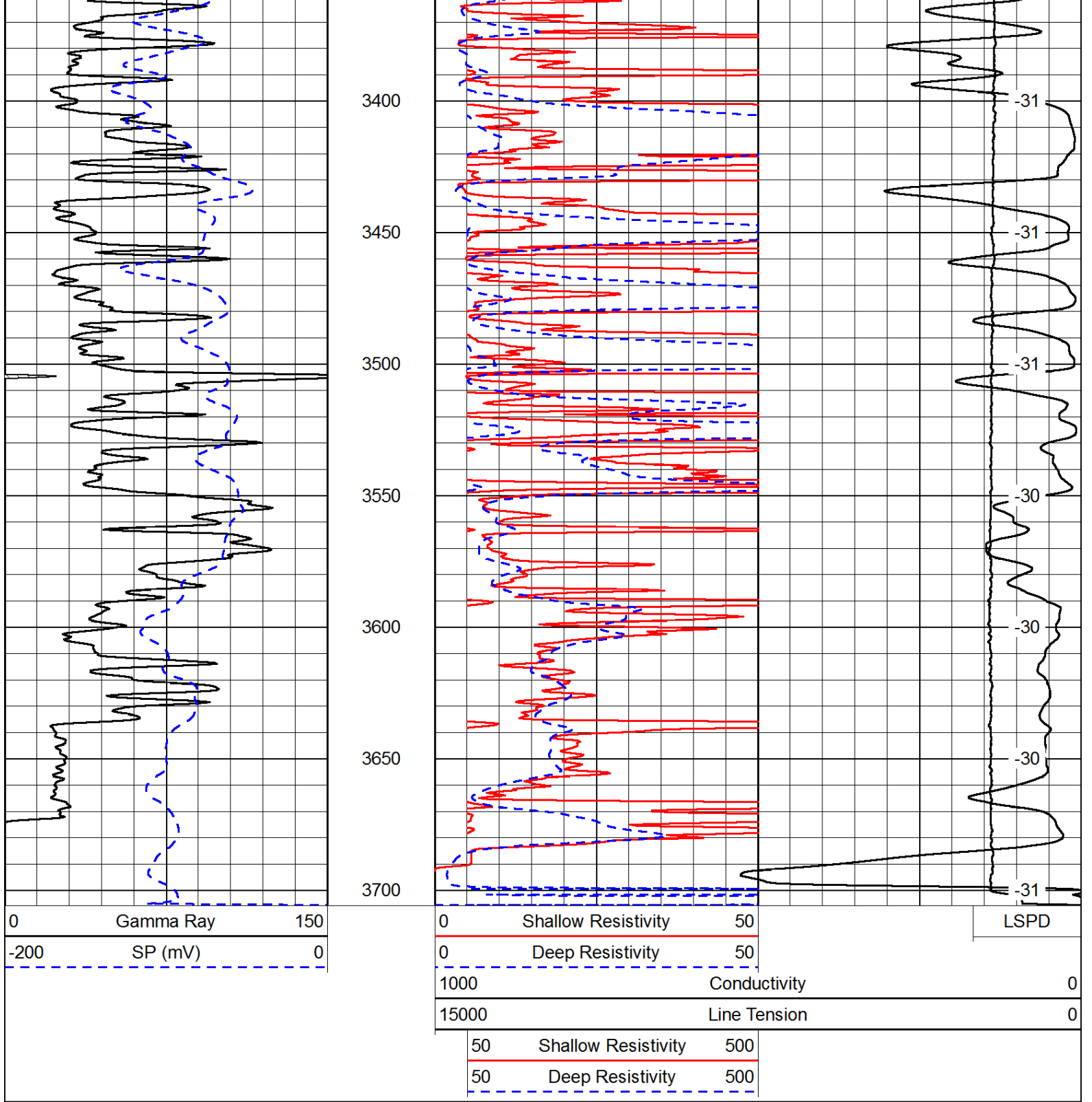
| | | |
|----|---------------------|-----|
| 50 | Shallow Resistivity | 500 |
| 50 | Deep Resistivity | 500 |



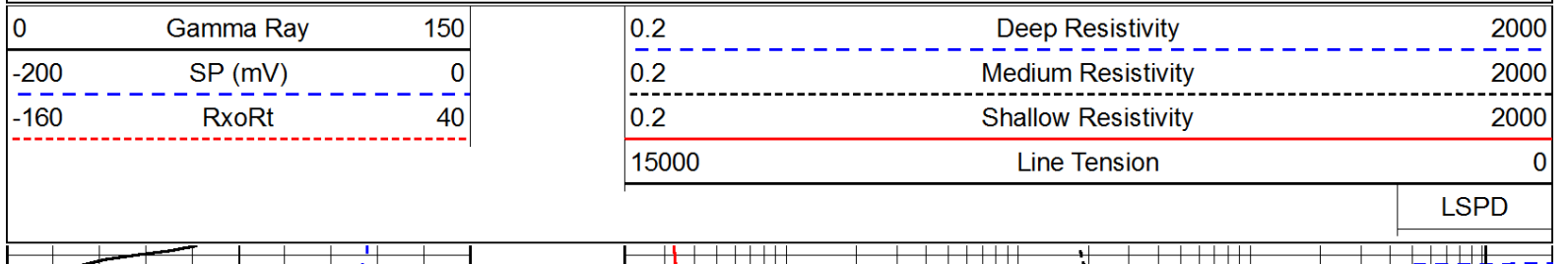


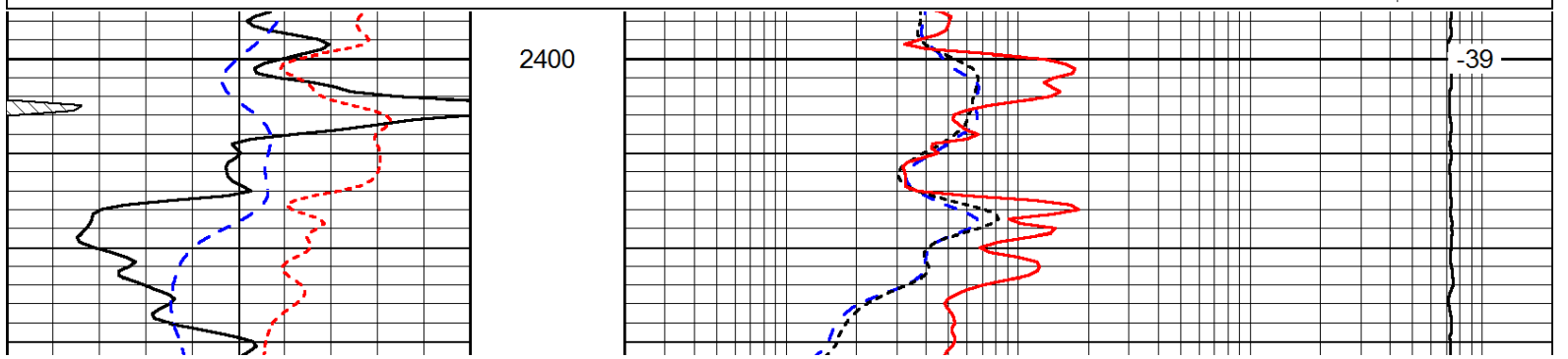
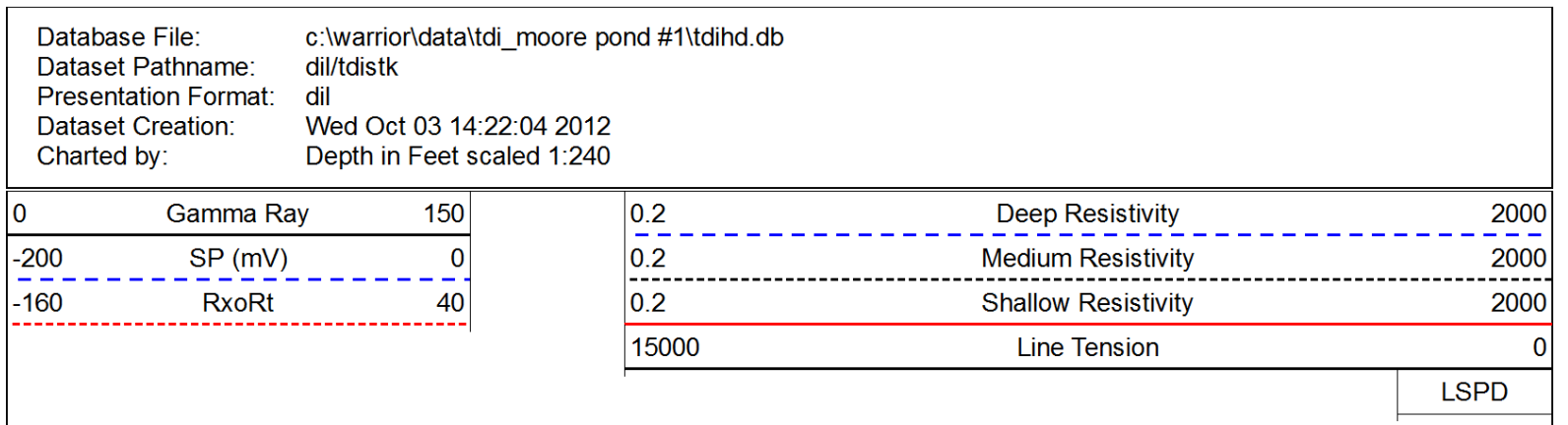
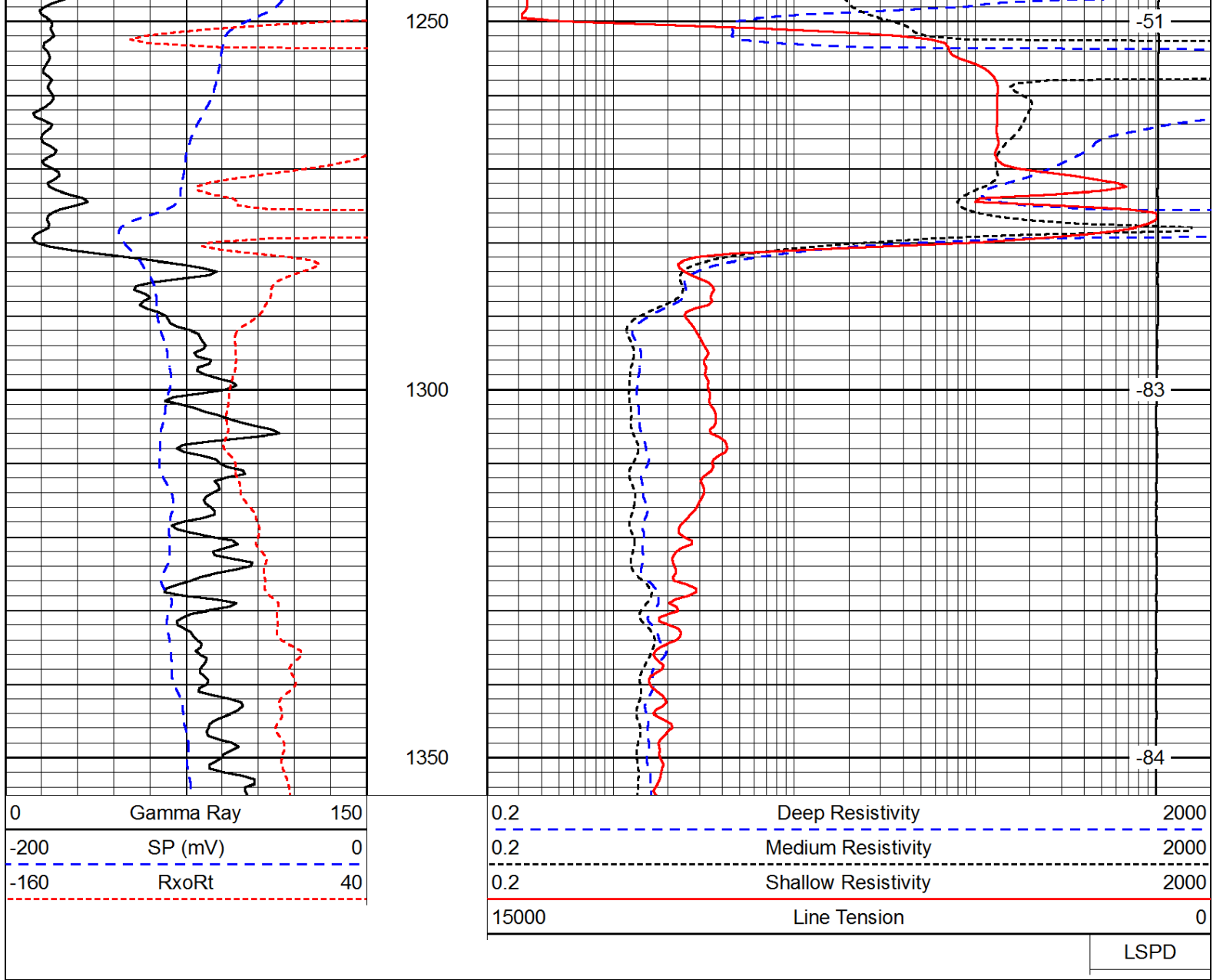


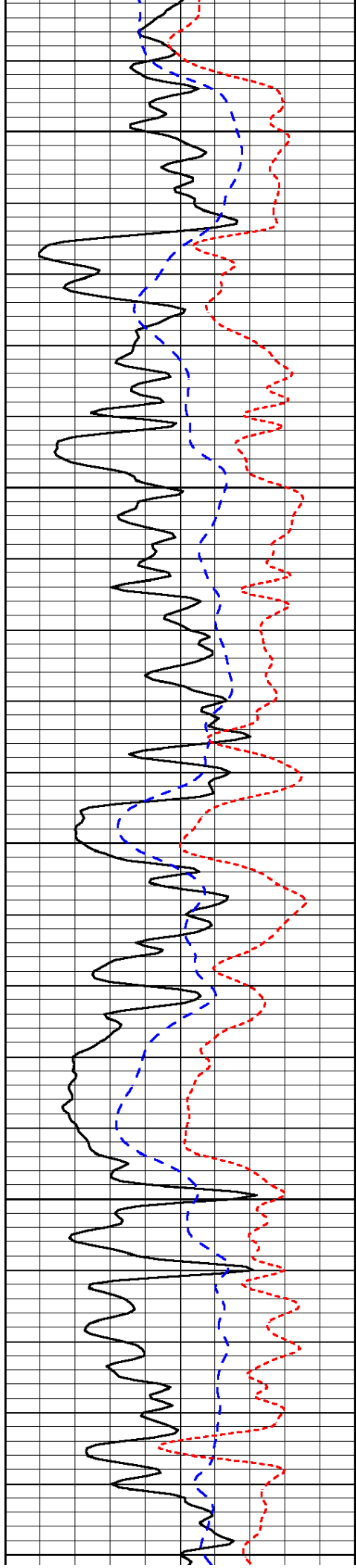




Database File: c:\warrior\data\tdi_moore pond #1\tdihd.db
 Dataset Pathname: dil/tdistk
 Presentation Format: dil
 Dataset Creation: Wed Oct 03 14:22:04 2012
 Charted by: Depth in Feet scaled 1:240







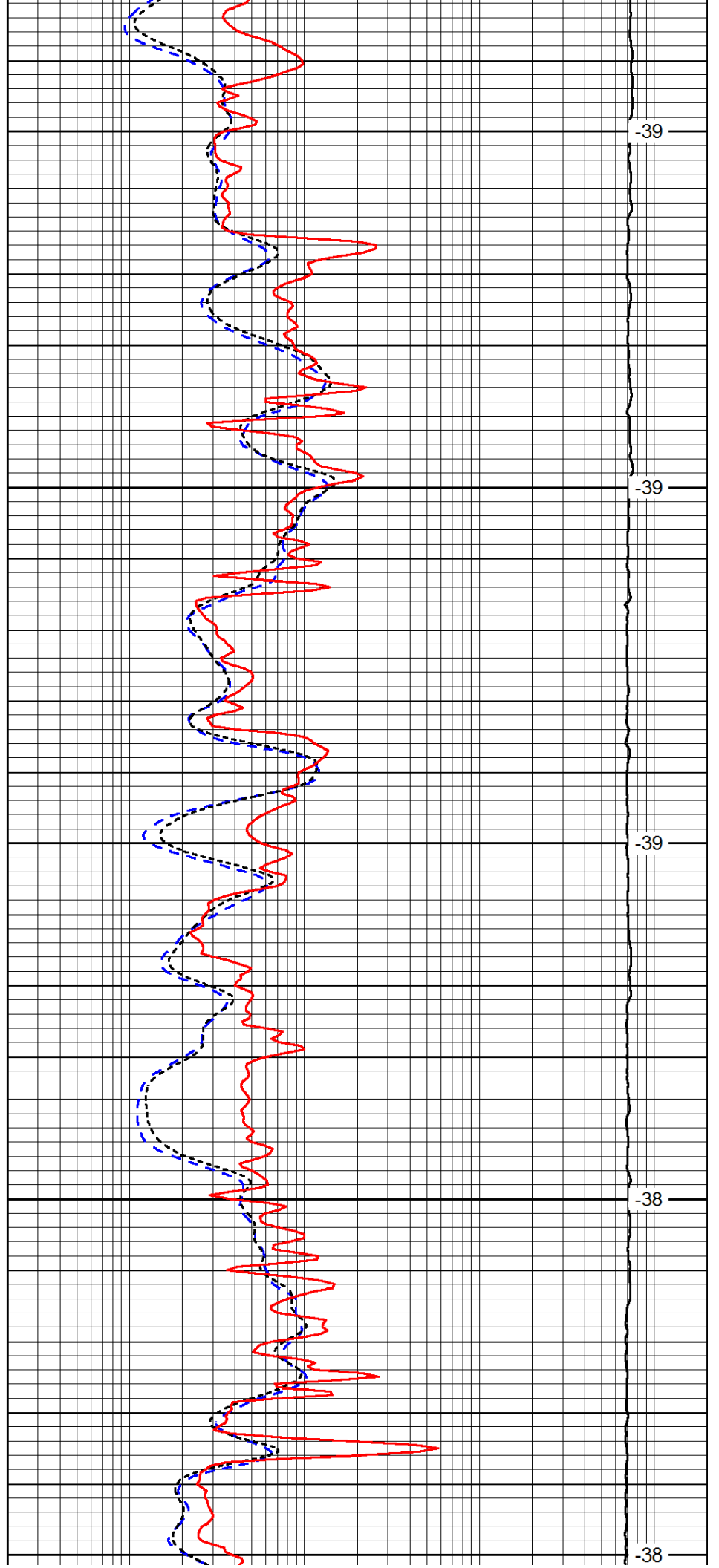
2450

2500

2550

2600

2650



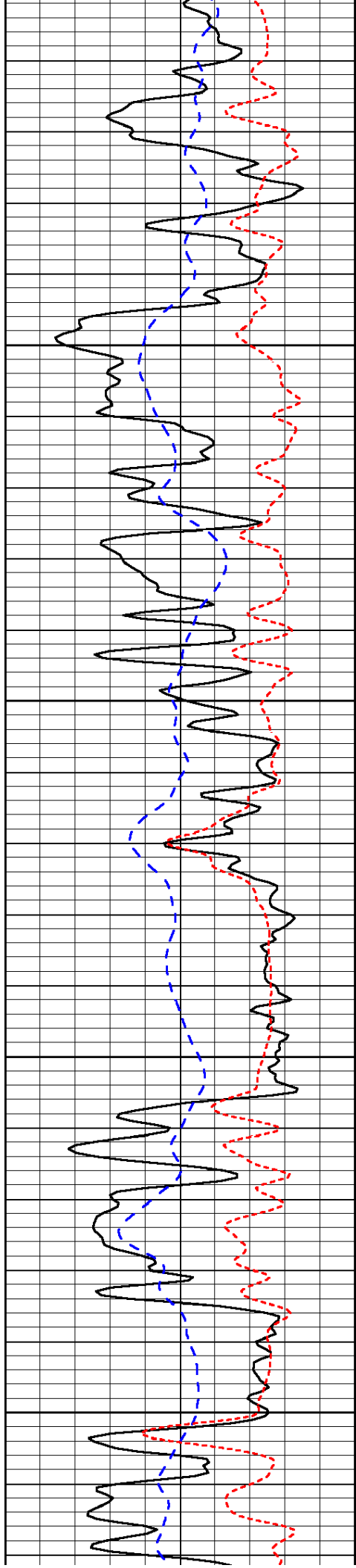
-39

-39

-39

-38

-38

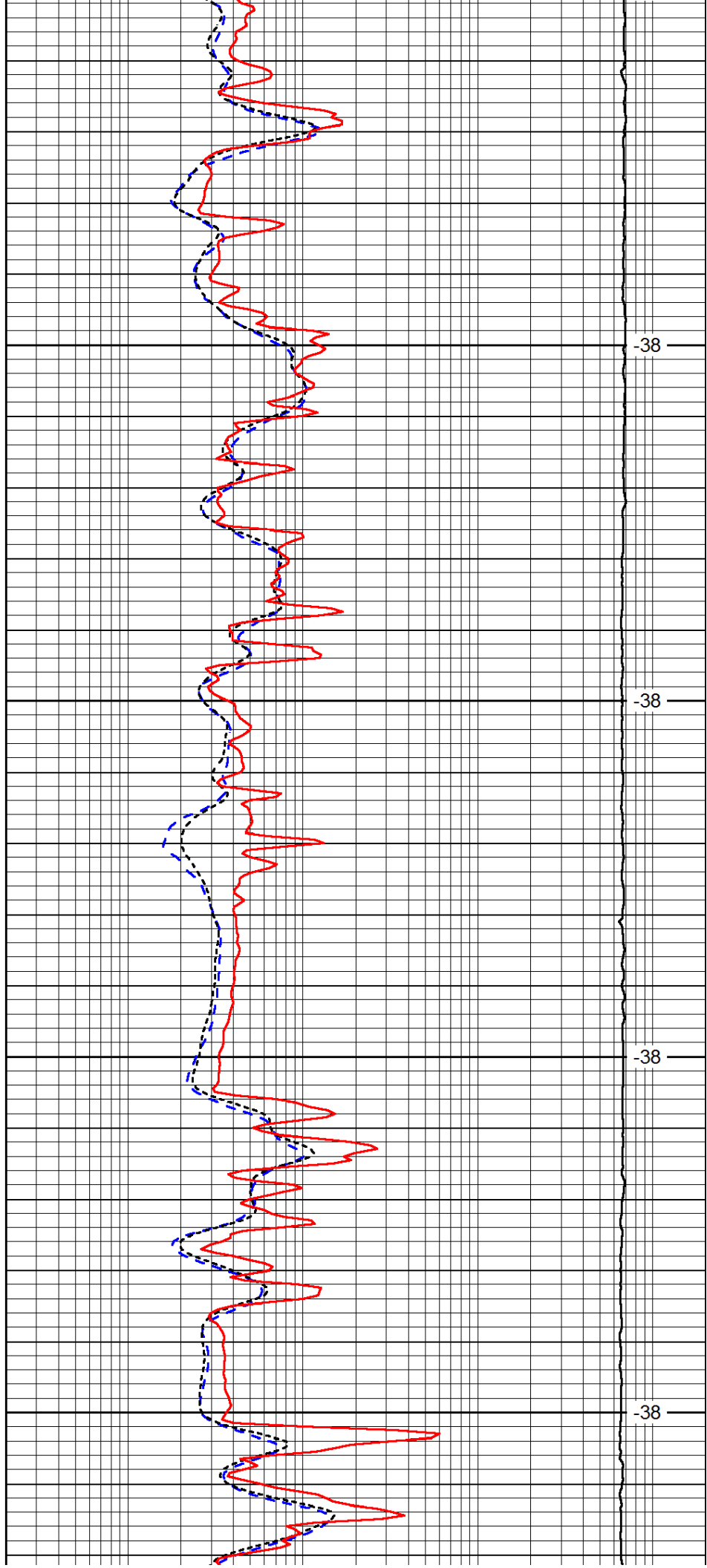


2700

2750

2800

2850

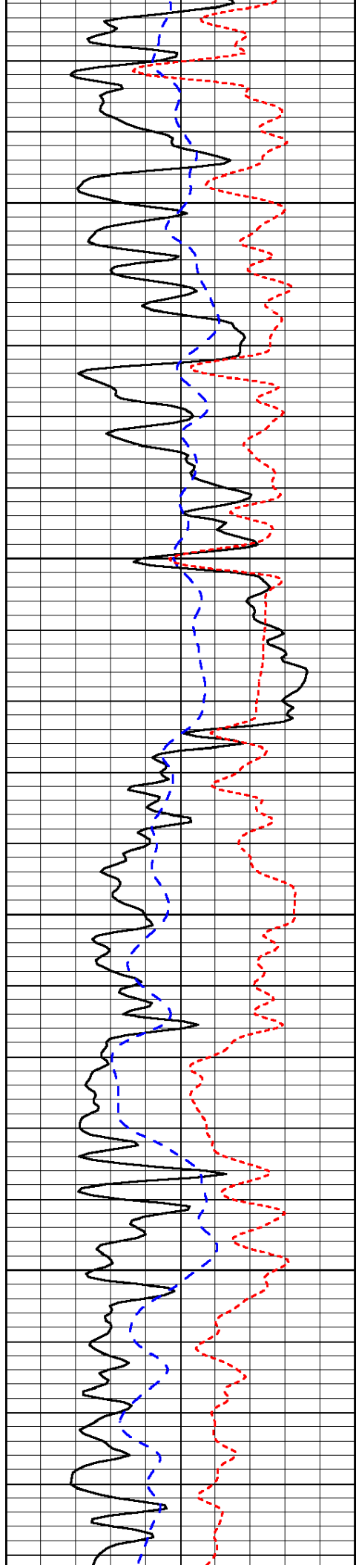


-38

-38

-38

-38

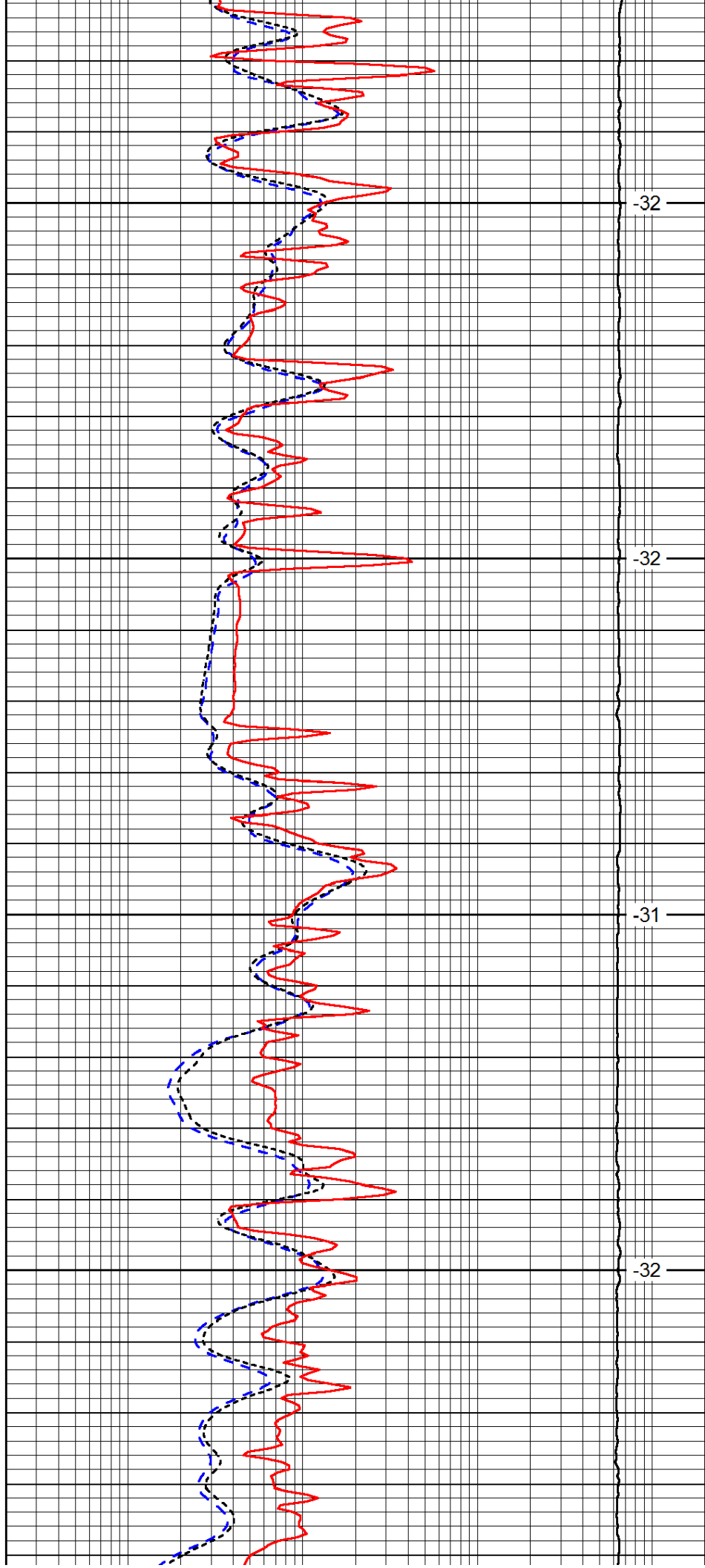


2900

2950

3000

3050

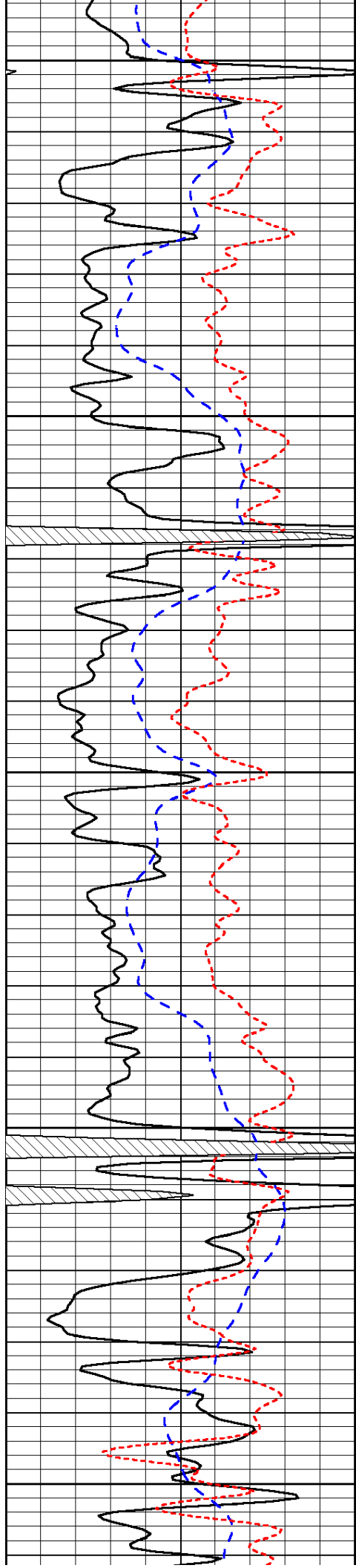


-32

-32

-31

-32



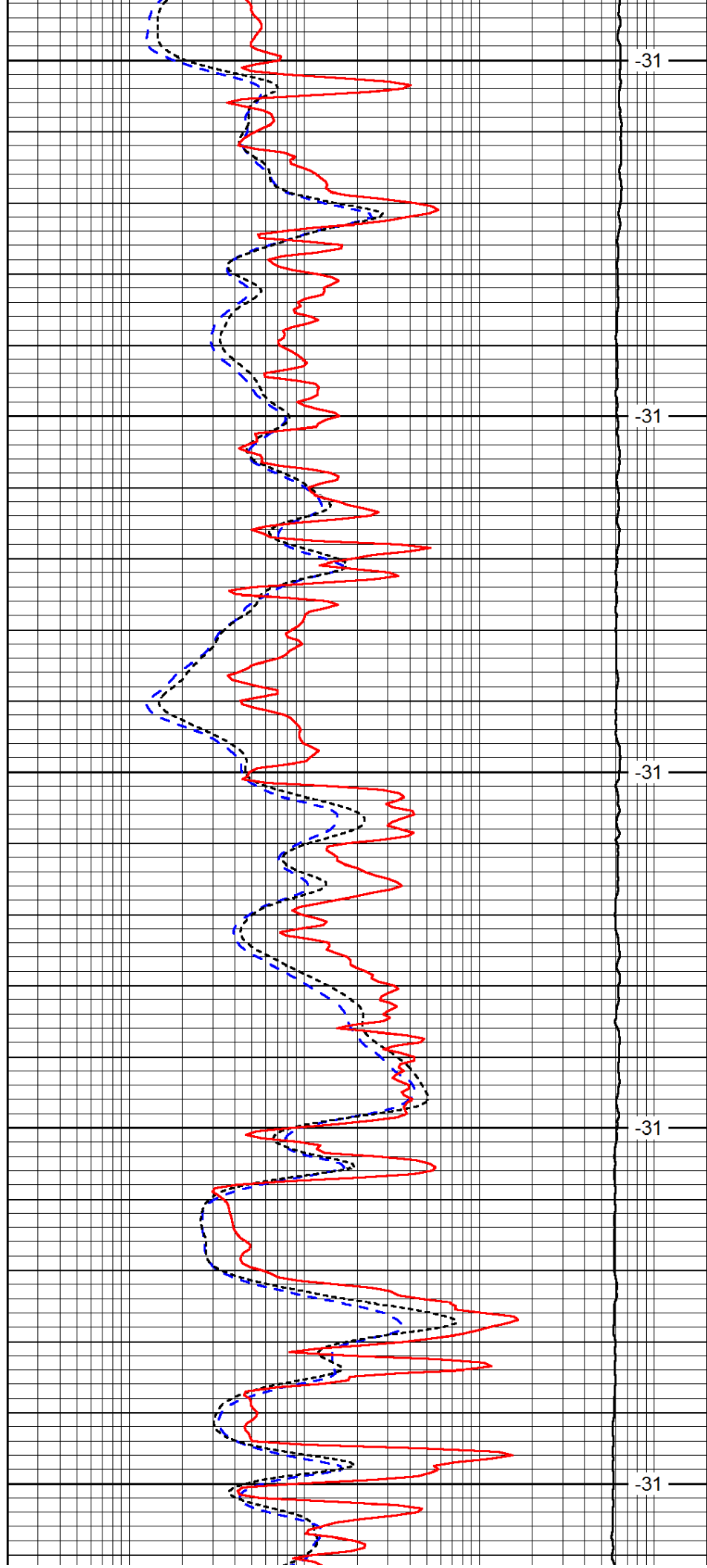
3100

3150

3200

3250

3300



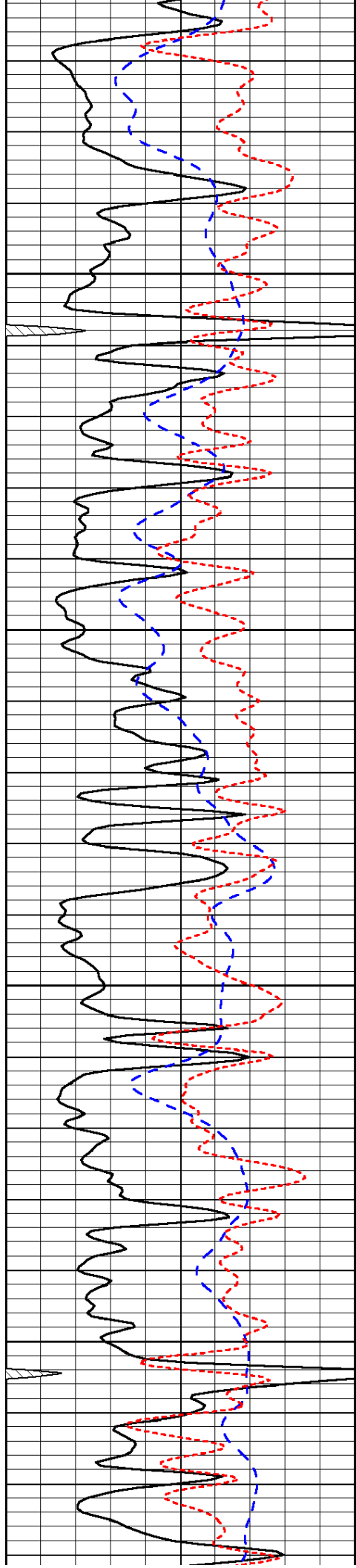
-31

-31

-31

-31

-31

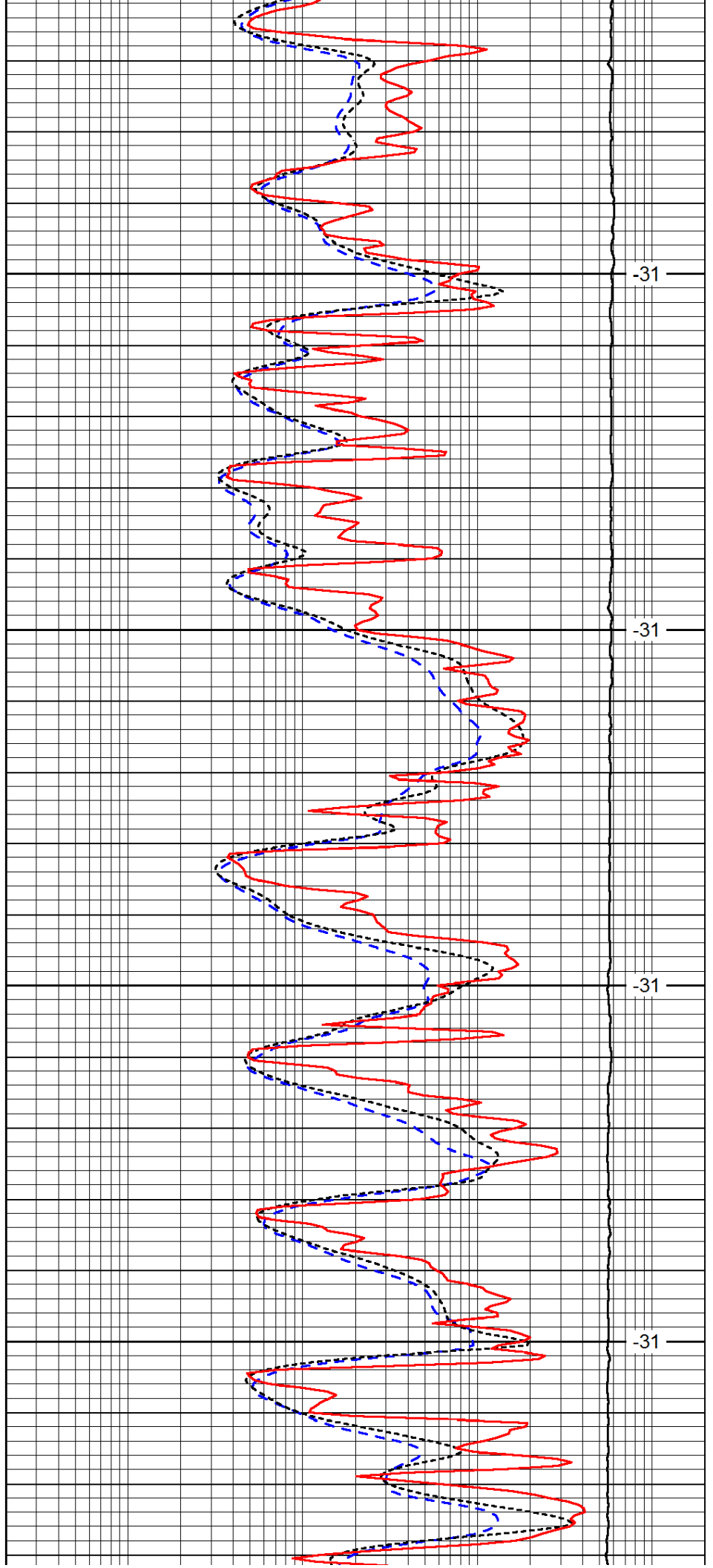


3350

3400

3450

3500

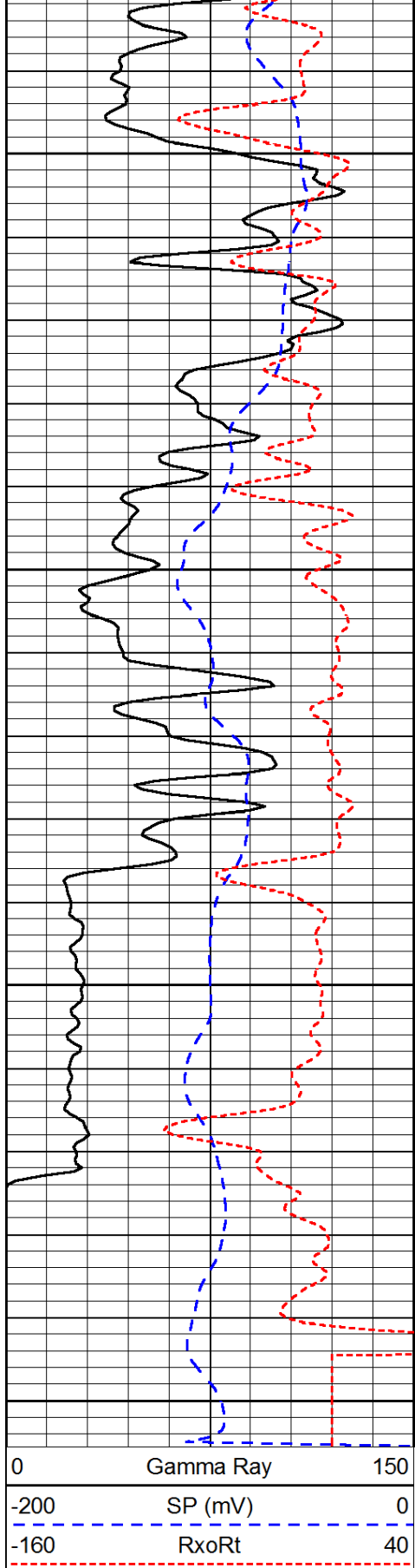


-31

-31

-31

-31

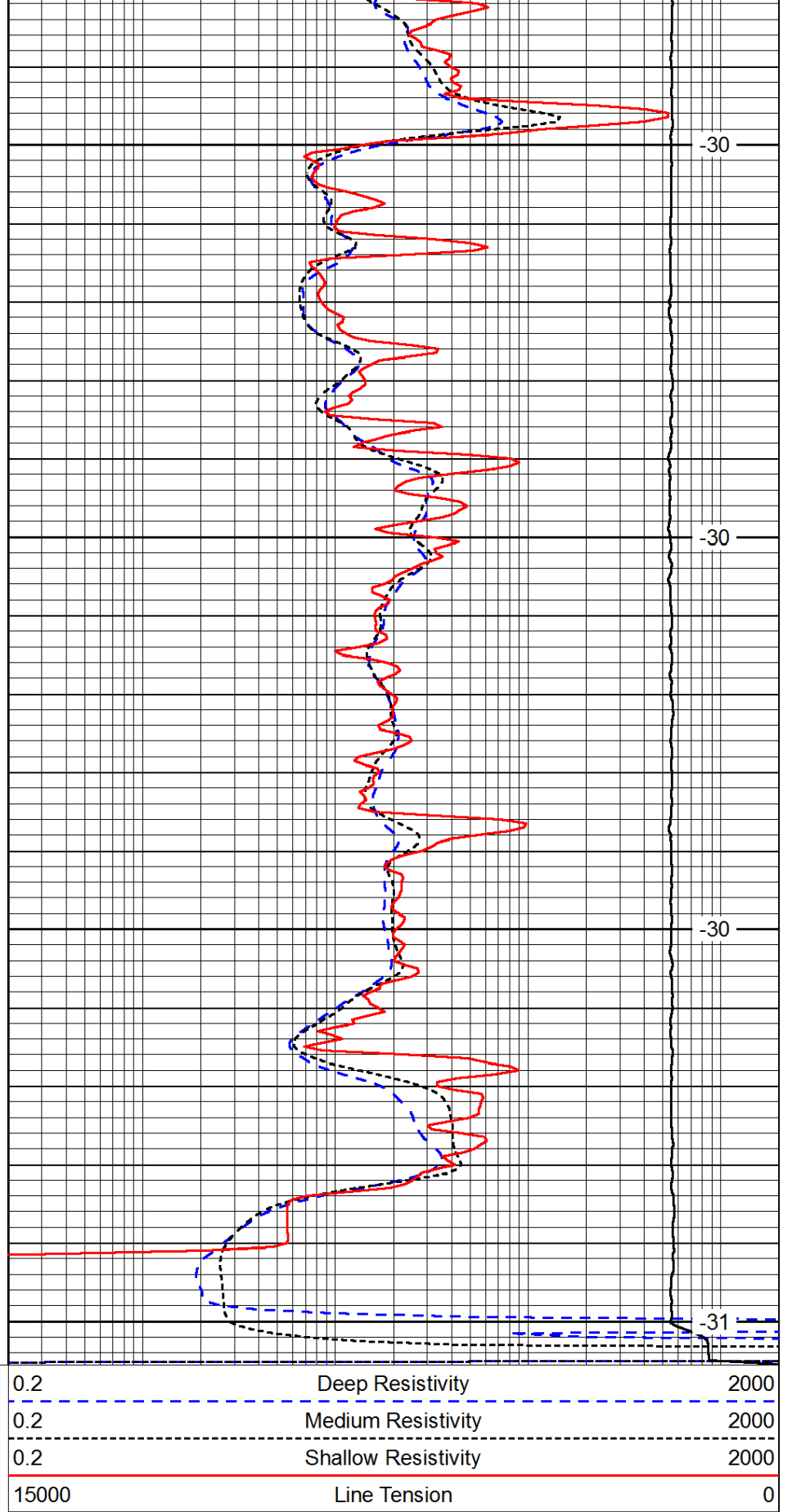


3550

3600

3650

3700



-30

-30

-30

-31

LSPD