



Pioneer Energy Services

Microresistivity Log

15-051-26,387-00-00

API No.

Company **TDI, Inc.**

Well **Moore Pond No.1**

Field

County **Eljis**

State

Kansas

Location

1660' FSL & 980' FWL

Other Services
CNL/CDL
DIL

Sec: **8**

Twp: **15S**

Rge: **19W**

Elevation

K.B. 2001
D.F.
G.L. 1991

Permanent Datum
Log Measured From
Drilling Measured From

Ground Level
Kelly Bushing
From Kelly Bushing

Elevation 1991
10 Ft. Above Perm. Datum

Date

10/3/2012

Run Number

Two

Depth Driller

3700

Depth Logger

3700

Bottom Logged Interval

3699

Top Log Interval

2400

Casing Driller

8.625 @ 1254

Casing Logger

1249

Bit Size

7.875

Type Fluid in Hole

Chemical

Salinity, ppm CL

4,000

Density / Viscosity

9.3 54

pH / Fluid Loss

10.5 8.0

Source of Sample

Flowline

Rm @ Meas. Temp

.8 @ 77

Rmf @ Meas. Temp

.6 @ 77

Rmc @ Meas. Temp

1.08 @ 77

Source of Rmf / Rmc

Charts

Rm @ BHT

.55 @ 113

Operating Rig Time

3 Hours

Max Rec. Temp. F

113

Equipment Number

17

Location

Hays

Recorded By

C. Desaire

Witnessed By

Tom Denning

Herb Deines

<<< Fold Here >>>

All interpretations are opinions based on inferences from electrical or other measurements and we cannot and do not guarantee the accuracy or correctness of any interpretation, and we shall not, except in the case of gross or willful negligence on our part, be liable or responsible for any loss, costs, damages, or expenses incurred or sustained by anyone resulting from any interpretation made by any of our officers, agents or employees. These interpretations are also subject to our general terms and conditions set out in our current Price Schedule.

Comments

Thank you for using Pioneer Energy Services
www.pioneerenergy.com
785 625 3858

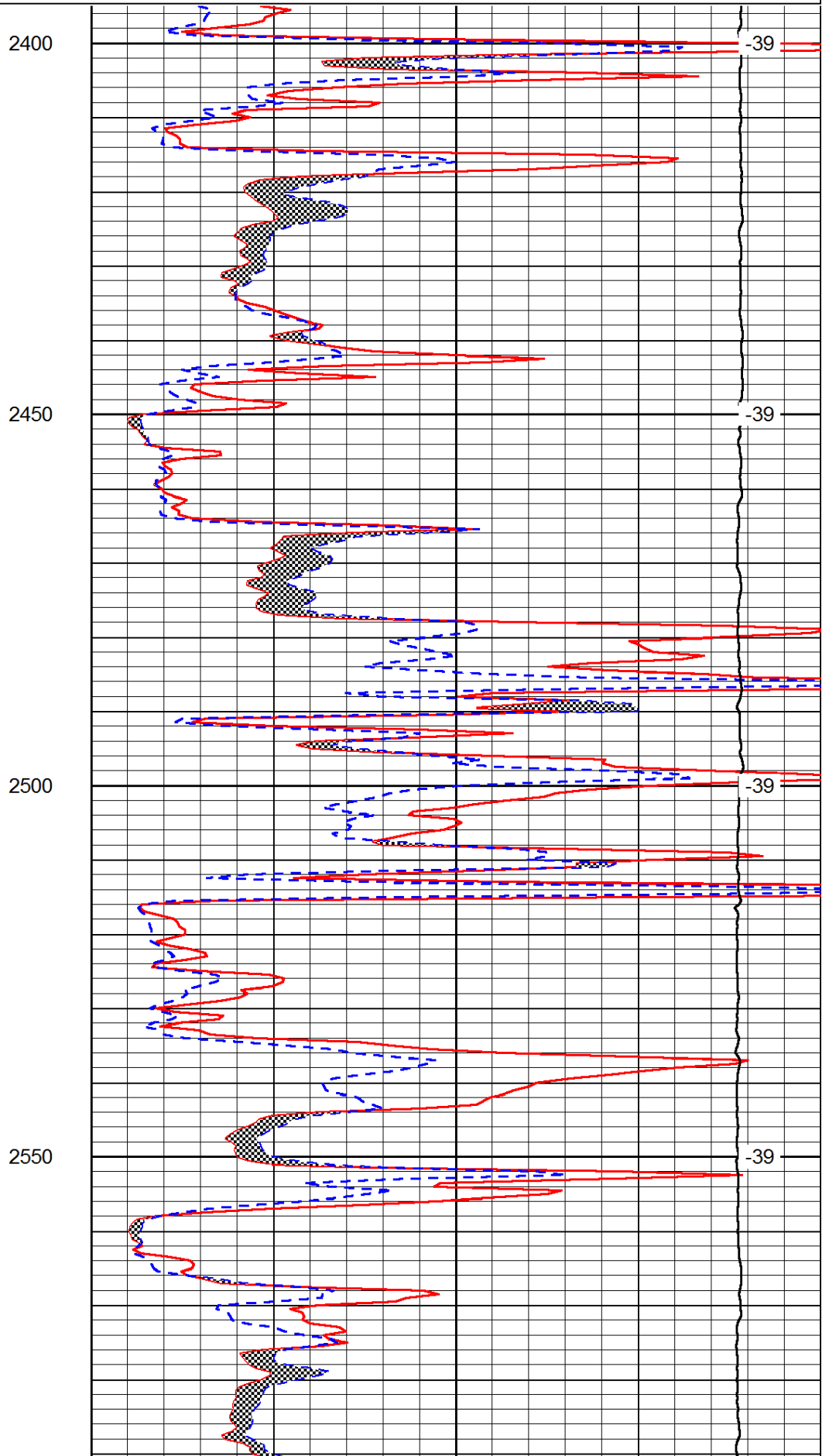
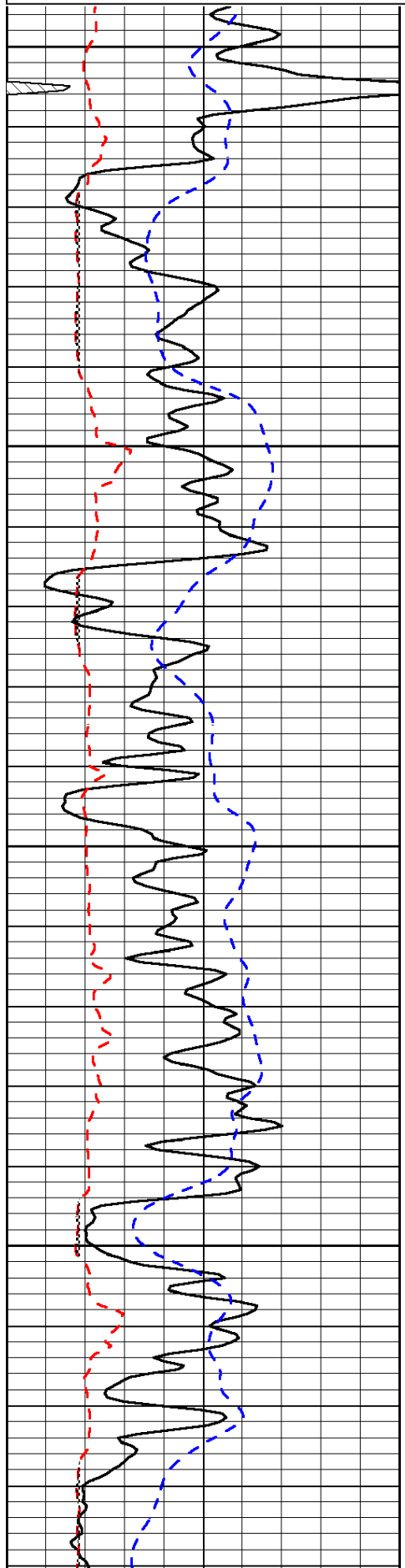
Antonino KS, 3 W, 2 S,
3/4 W, N Into

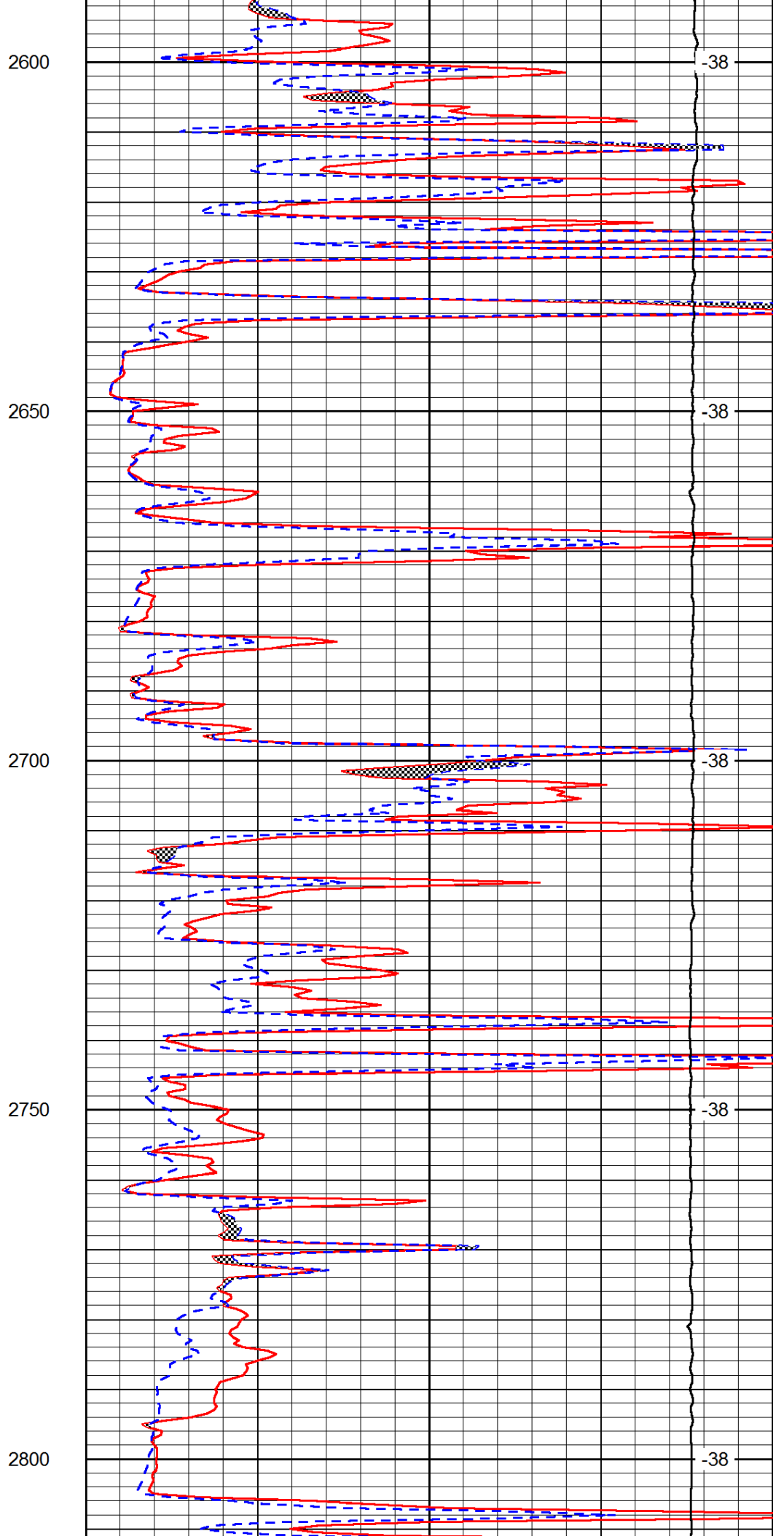
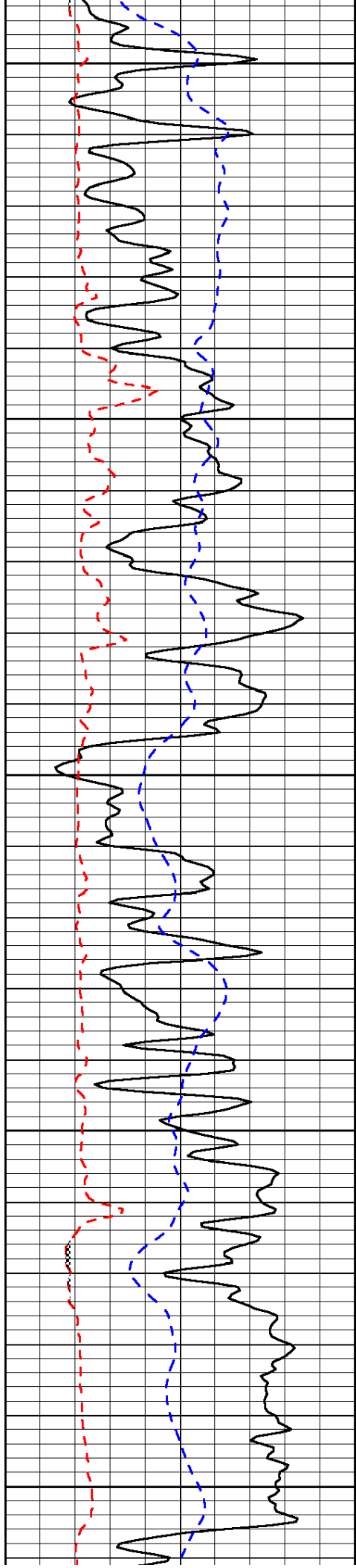
Database File: c:\warrior\data\tdi_moore pond #1\tdihd.db
Dataset Pathname: dil\tdistk
Presentation Format: micro
Dataset Creation: Wed Oct 03 14:22:04 2012
Charted by: Depth in Feet scaled 1:240

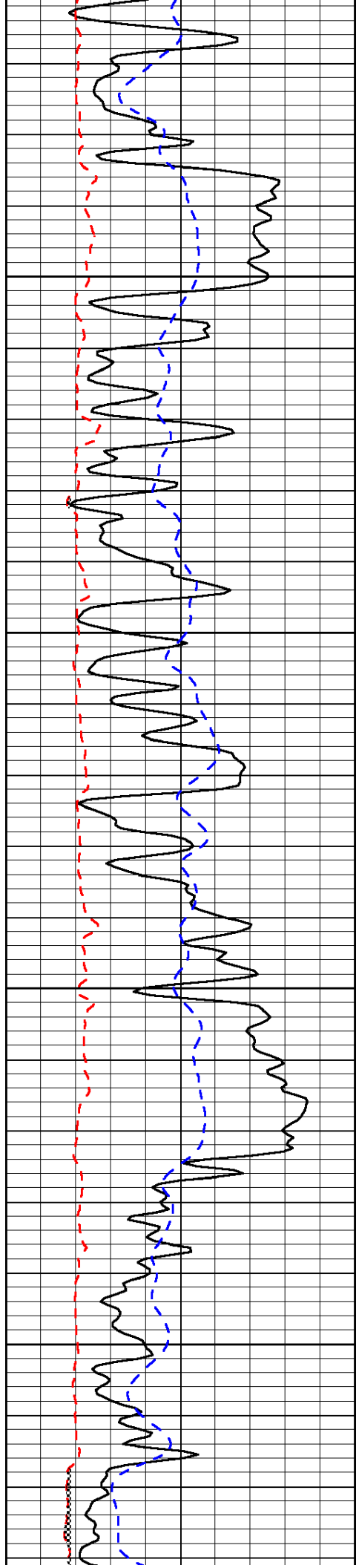
0	Gamma Ray	150
6	Micro Log Caliper (GAPI)	16
-200	SP (mV)	0

0	Micro Inverse 1 X 1	40
0	Micro Normal 2"	40
15000	Line Weight	0

LSPD





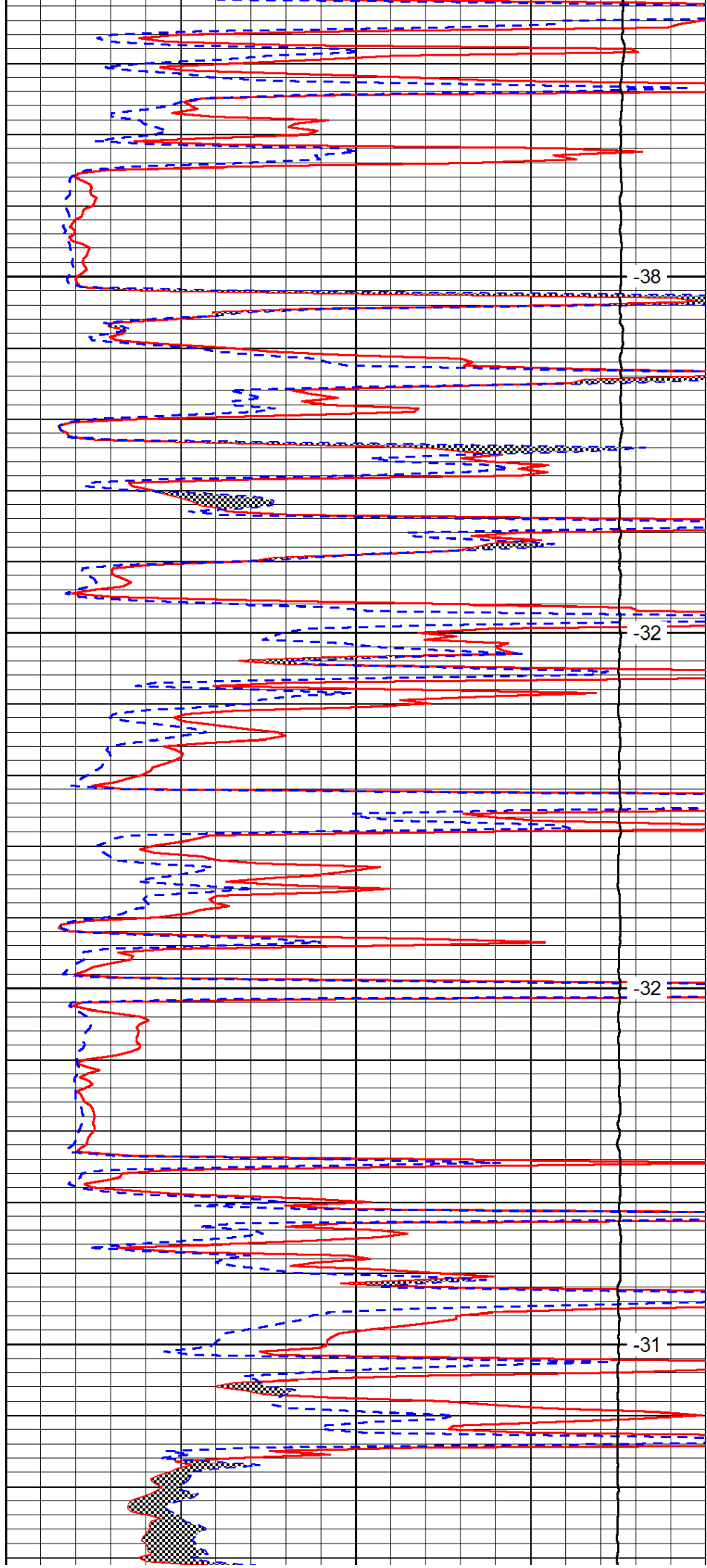


2850

2900

2950

3000

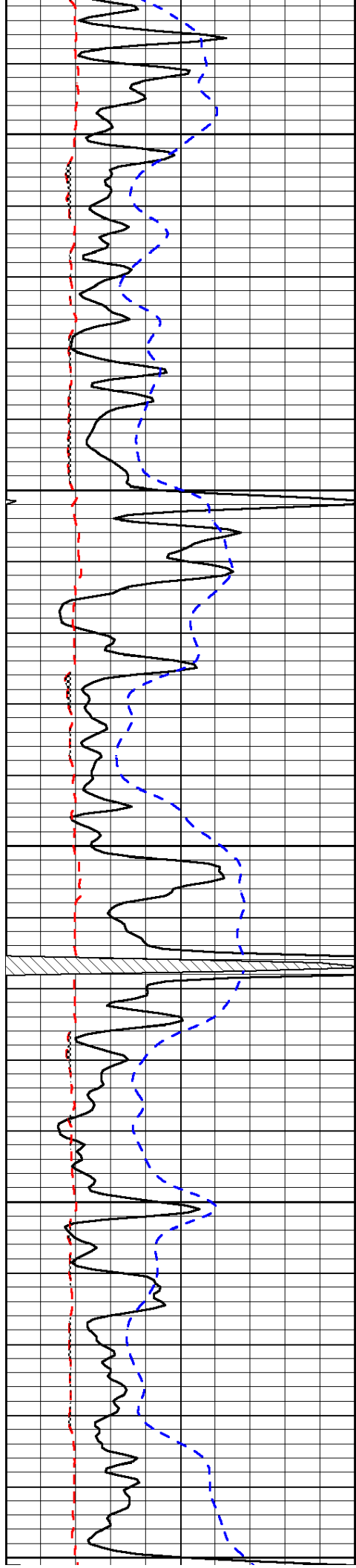


-38

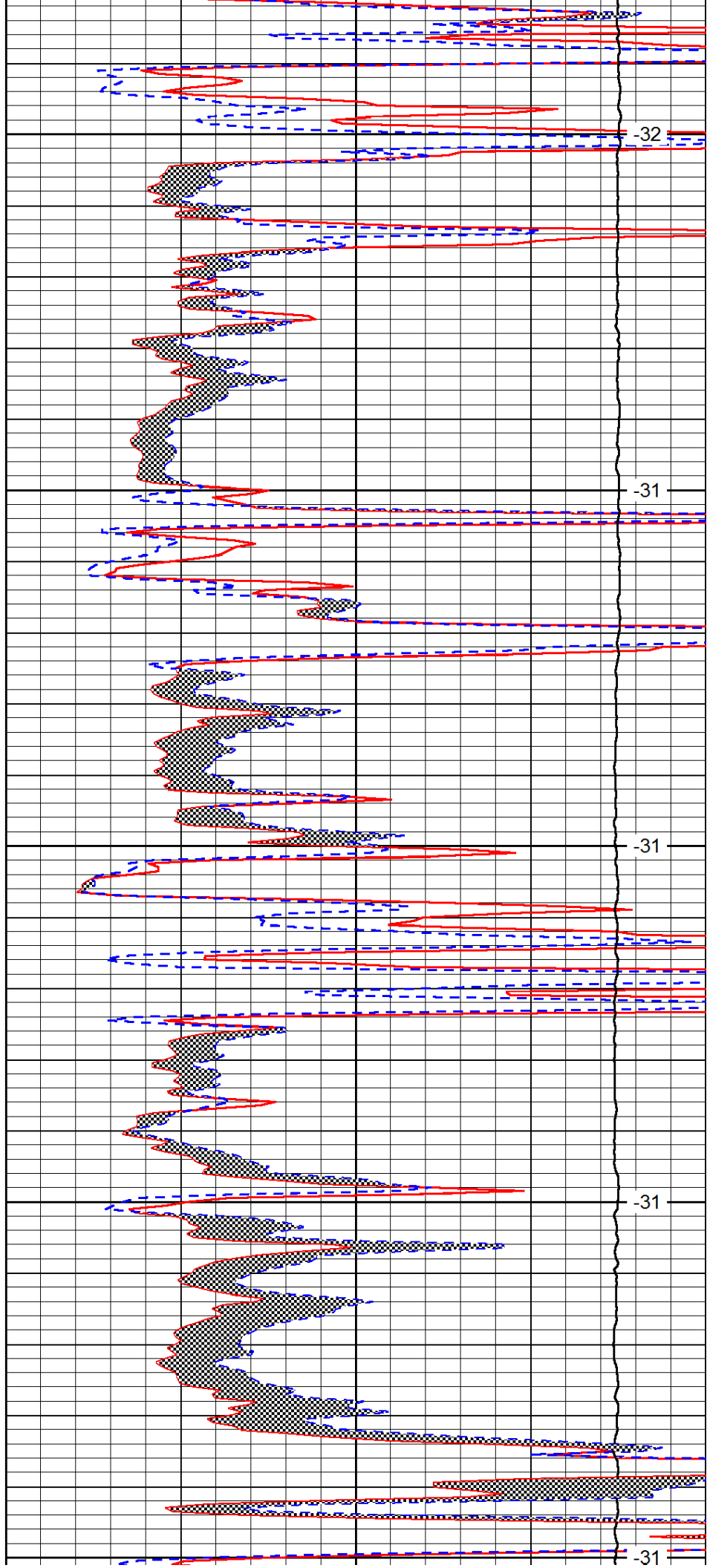
-32

-32

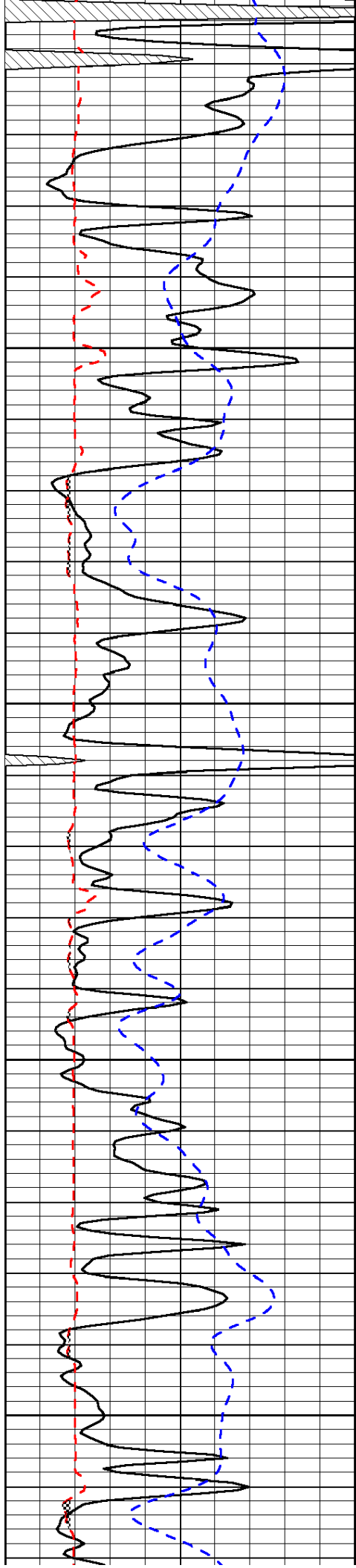
-31



3050
3100
3150
3200
3250



-32
-31
-31
-31
-31

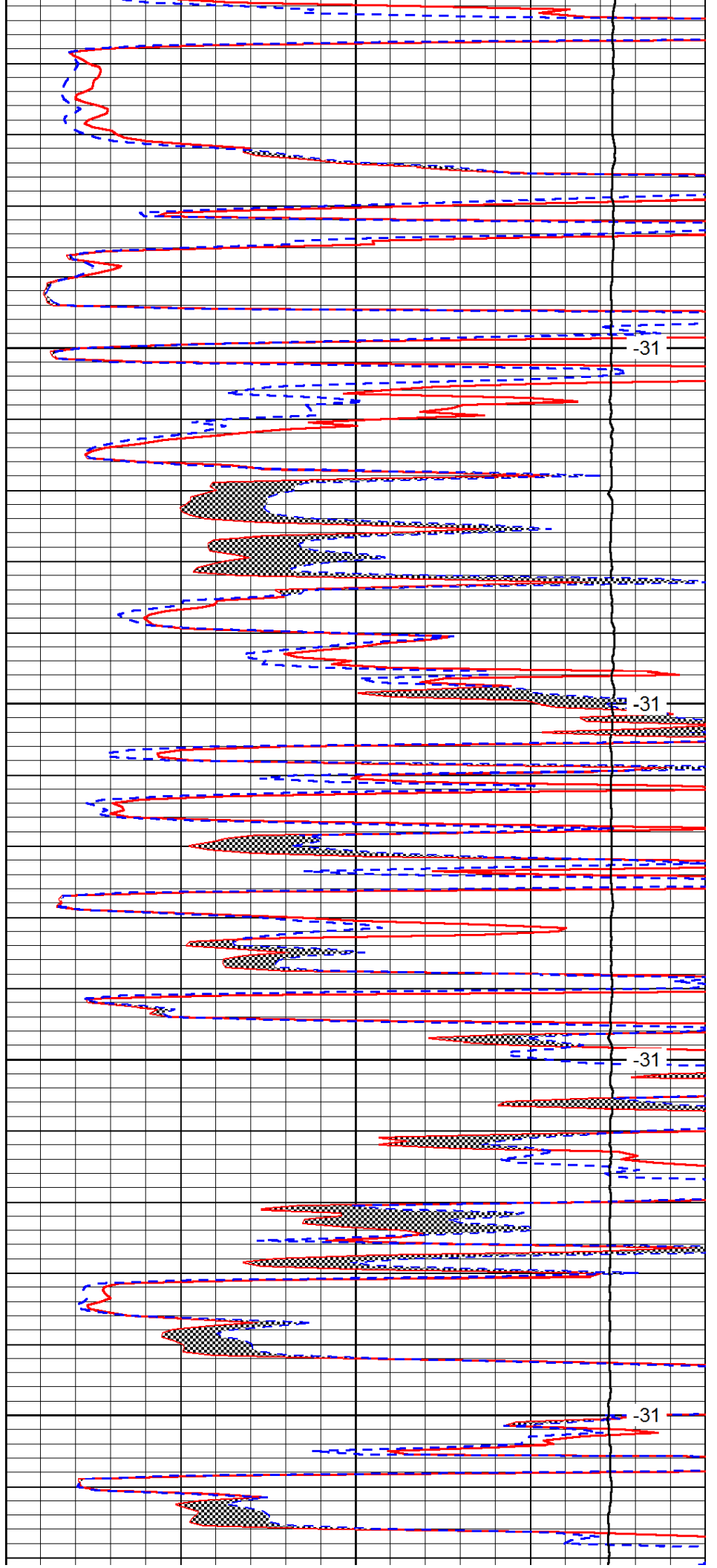


3300

3350

3400

3450

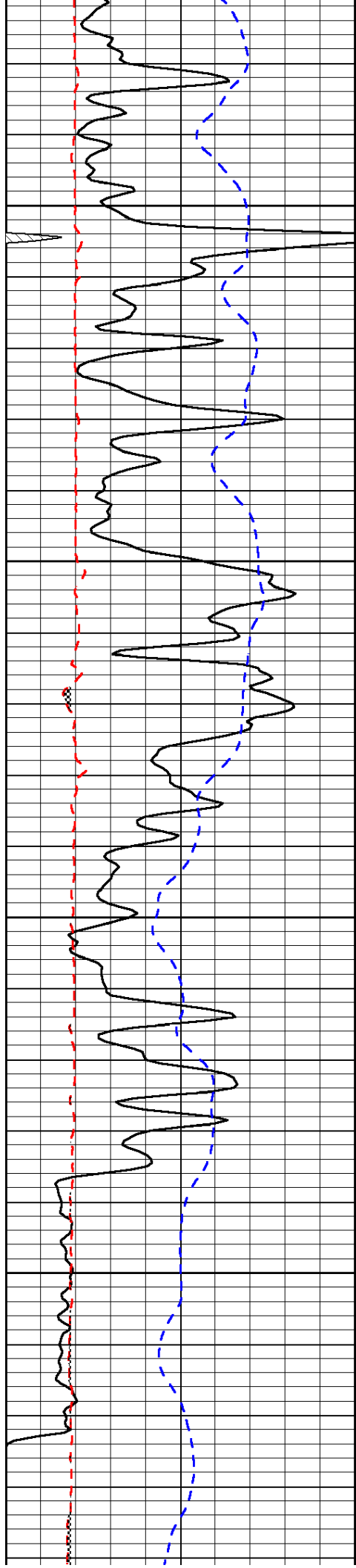


-31

-31

-31

-31

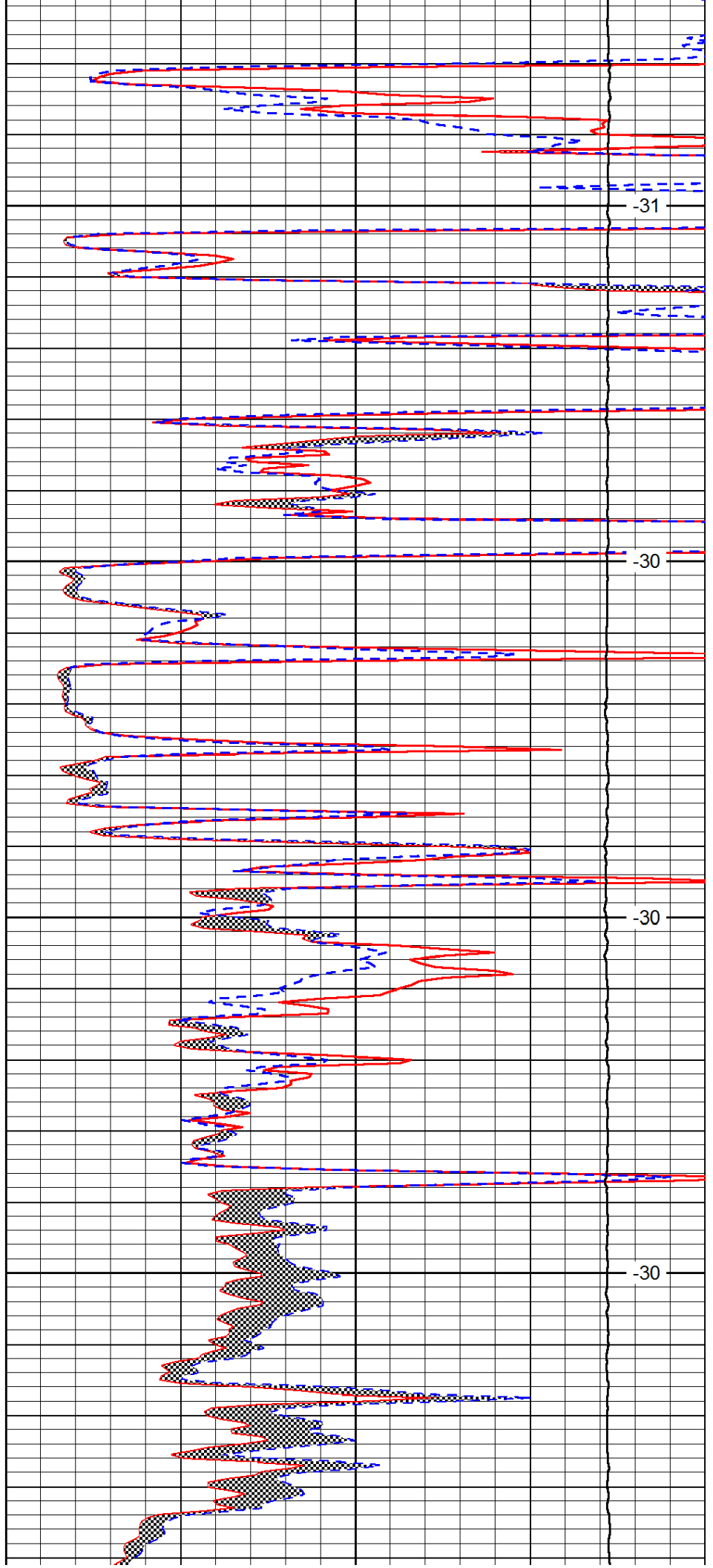


3500

3550

3600

3650

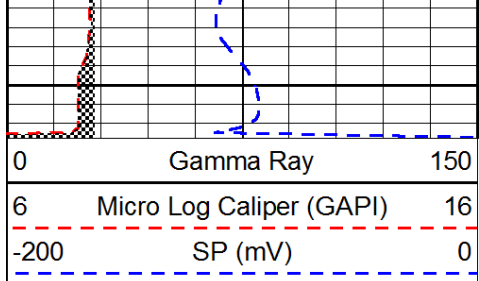


-31

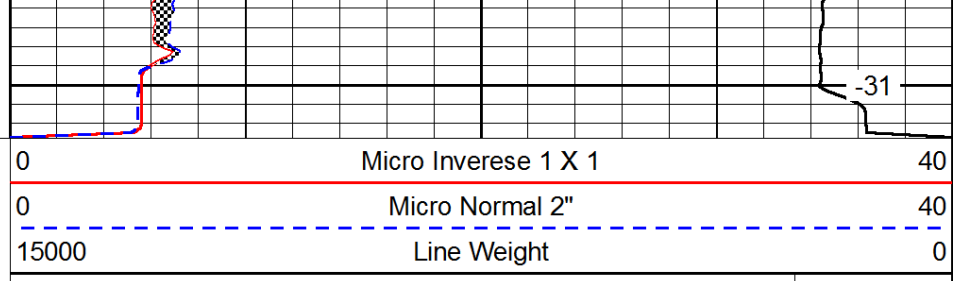
-30

-30

-30



3700



LSPD