



## Exploration Services LLC

Scale 1:240 (5"=100') Imperial

Well Name: Sandridge Energy, Inc. Alberta Marie SWD 3119 1 23  
Location: SW/4 Section 23-T31S-R19W Comanche County, Oklahoma  
Licence Number: API#15-033-21653 Region: Spur Field Area  
Spud Date: 7-9-2012 Drilling Completed: 7-21-2012  
Surface Coordinates: 225' FSL & 2422' FWL of Section 23-T31S-R19W

Bottom Hole Coordinates: 225' FSL & 2422' FWL of Section 23-T31S-R19W  
Ground Elevation (ft): 2110 K.B. Elevation (ft): 2121  
Logged Interval (ft): 950 To: 7116 Total Depth (ft): 7116  
Formation: Anhydrites to Arbuckle  
Type of Drilling Fluid: Water-based Mud, Water

Printed by MUD.LOG from WellSight Systems 1-800-447-1534 [www.WellSight.com](http://www.WellSight.com)

### OPERATOR

Company: Sandridge Energy, Inc.  
Address: 123 Robert S. Kerr Avenue  
Oklahoma City, OK 73102  
405-429-5720

### GEOLOGIST

Name: Kathy Gentry  
Company: Sandridge Energy, Inc.  
Address: 123 Robert S. Kerr Avenue  
Oklahoma City, OK 73102  
405-250-3801 off.

### Drilling Co.

Tom Cat Rig #2

### Mudlogging Co.

PML Exploration Services LLC  
5601 NW 72nd Street, Suite 354  
Oklahoma City, OK 73132  
405-702-5415

### Data Analysts

Dawn English, Michael Bickford

### ROCK TYPES

	Anhy		Coal		Lmst		Shcol		Shlygw
	Bent		Congl		Meta		Shgy		Shale (carb)
	Brec		Dol		Mrlst		Sltst		Grtwsh
	Cht		Gyp		Salt		Ss		
	Clyst		Igne		Shale		Till		

### ACCESSORIES

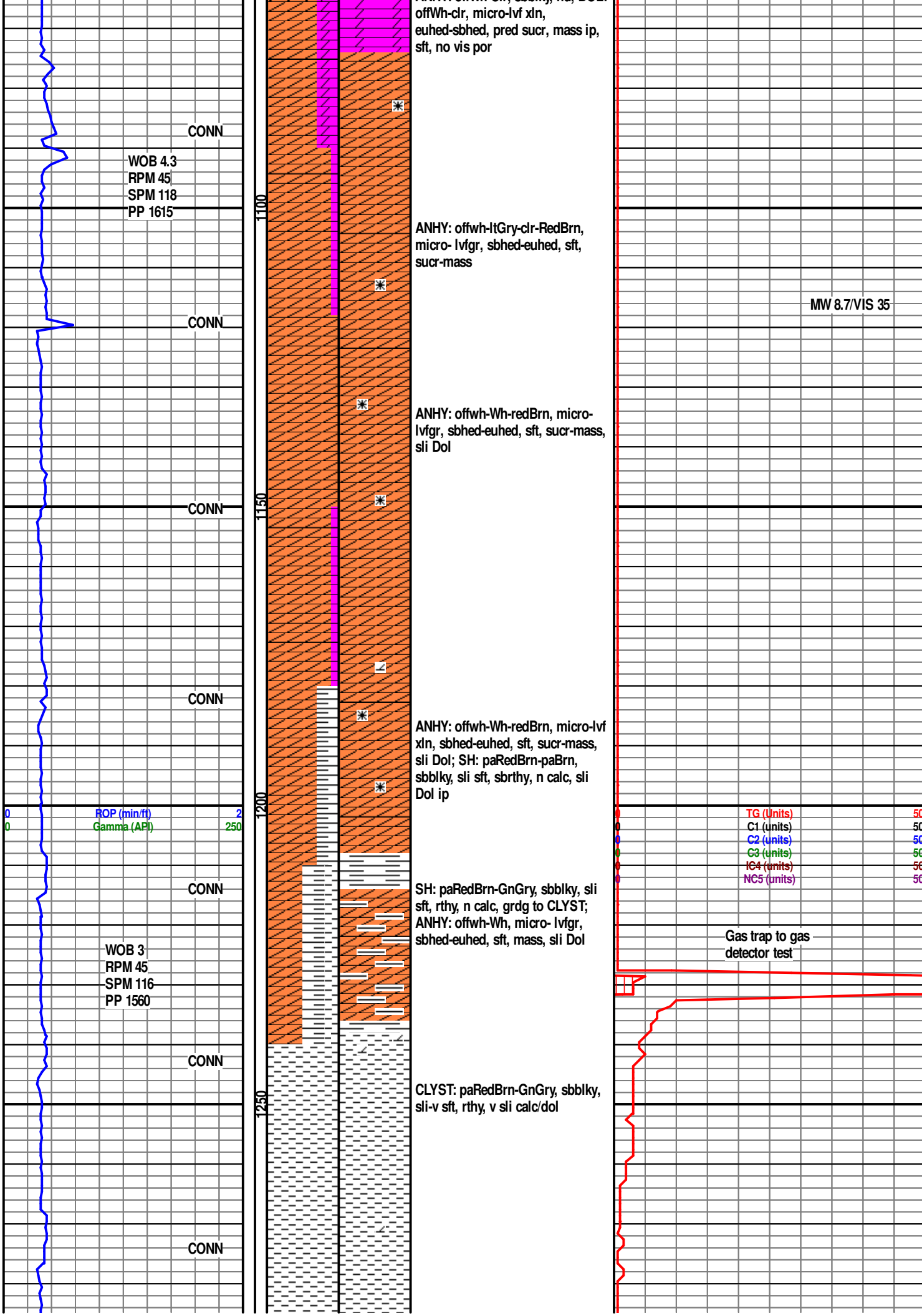
<b>MINERAL</b>		Gyp	<b>FOSSIL</b>		Ostra		Sltstrg
	Anhy		Hvymin		Algae		Ssstrg
	Arggrn		Kaol		Amph		
	Arg		Marl		Belm	<b>TEXTURE</b>	
	Bent		Minxl		Bioclst		Boundst
	Bit		Nodule		Brach		Chalky
	Brecfrag		Phos		Bryozoa		Cryxln
	Calc		Pyr		Cephal		Earthy
	Carb		Salt		Coral		Finexln
	Chtdk		Sandy		Crin		Grainst
	Chtlt		Silt		Echin		Lithogr
	Dol		Sil		Fish		Microxln
	Feldspar		Sulphur		Foram		Mudst
	Ferrpel		Tuff		Fossil		Packst
	Ferr				Gastro		Wackest
	Glau				Oolite		
				<b>STRINGER</b>			
					Anhy		
					Arg		
					Bent		
					Coal		
					Dol		
					Gyp		
					Ls		
					Mrst		

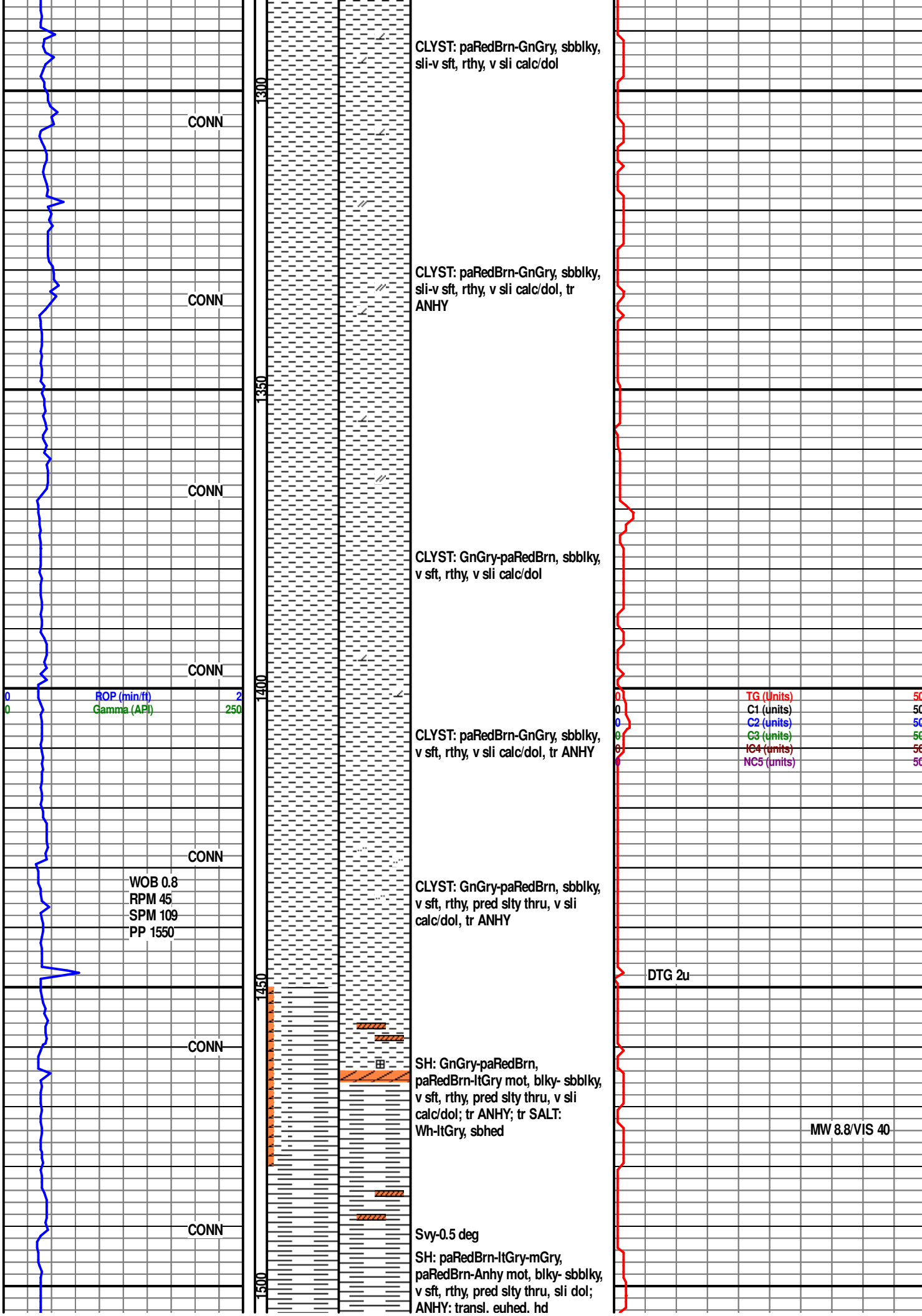
### OTHER SYMBOLS

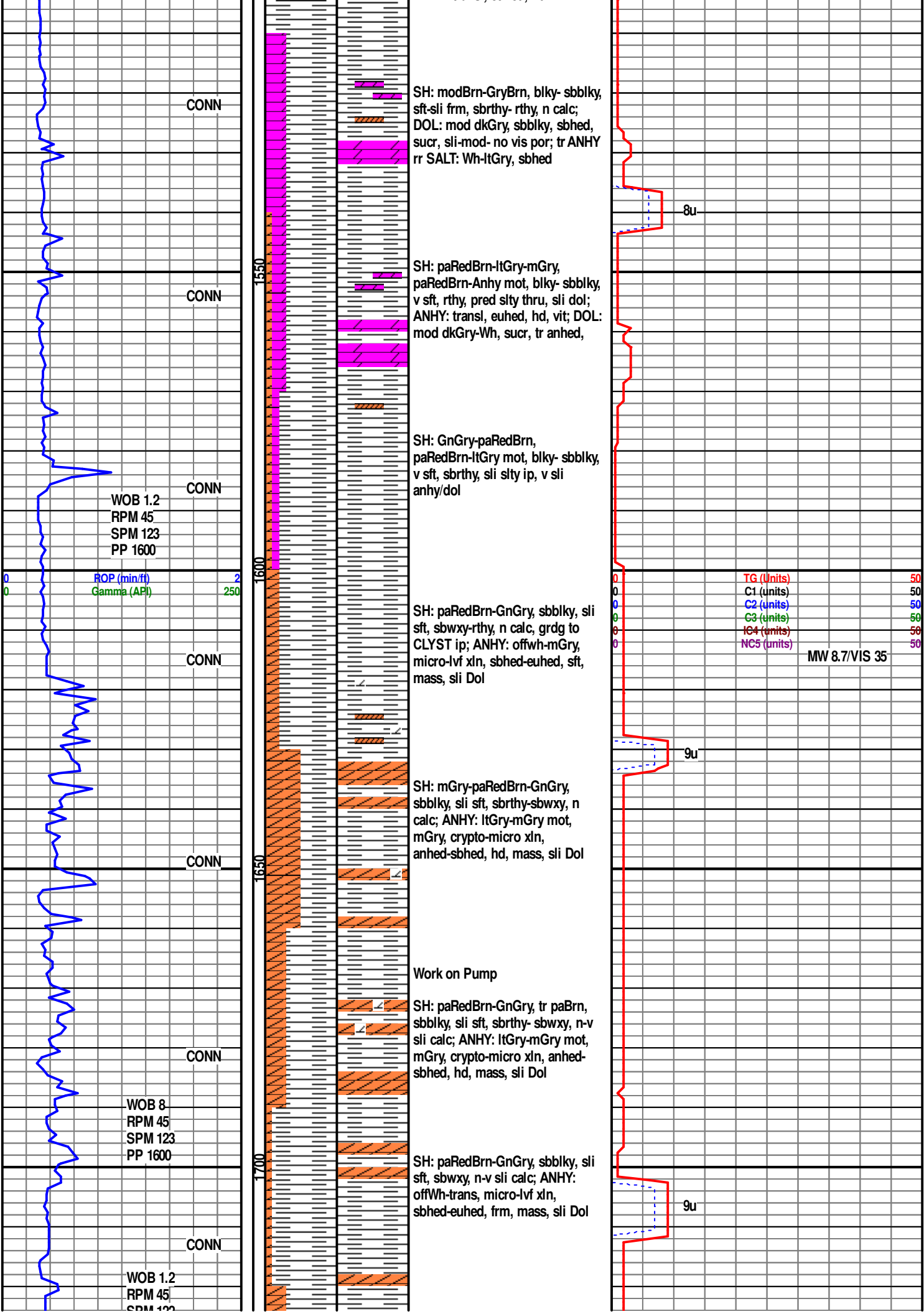
<b>POROSITY</b>		Vuggy	<b>ROUNDING</b>		Spotted	<b>EVENT</b>		
	Earthy			Rounded		Ques		Rft
	Fenest	<b>SORTING</b>		Subrnd		Dead		Sidewall
	Fracture		Well					
	Inter		Moderate	<b>INTERVAL</b>				
	Moldic		Poor		Core			
	Organic				Dst			
	Pinpoint							
		<b>OIL SHOW</b>		Even				

Sandridge Energy		Lithology	Lithology	Geological Descriptions	TG, C1-C5					
ROP (min/ft)	Gamma (API)				TG (Units)	C1 (units)	C2 (units)	C3 (units)	IC4 (units)	NC5 (units)
0	0	800			0	0	0	0	0	0
Sandridge Energy, Inc. Alberta Marie SWD 3119 1-23 Section 23-T31S-R19W Comanche County, Kansas					Began two-man logging operations @ 850' on 7-9-2012.					
White = rotate Black = slide										
ROP scale: 0 - 2 min/ft Gamma scale: 0 - 250 API				833' Work tight hole 9 5/8" Surface Casing set @ 833'; Tag cement @ 787'	Gas scale: 0 - 50 u 100 units = 1% methane					
7-10-12 to 7-12-12										

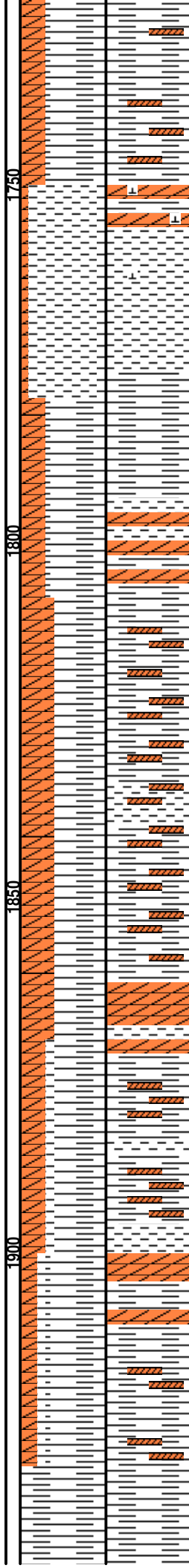
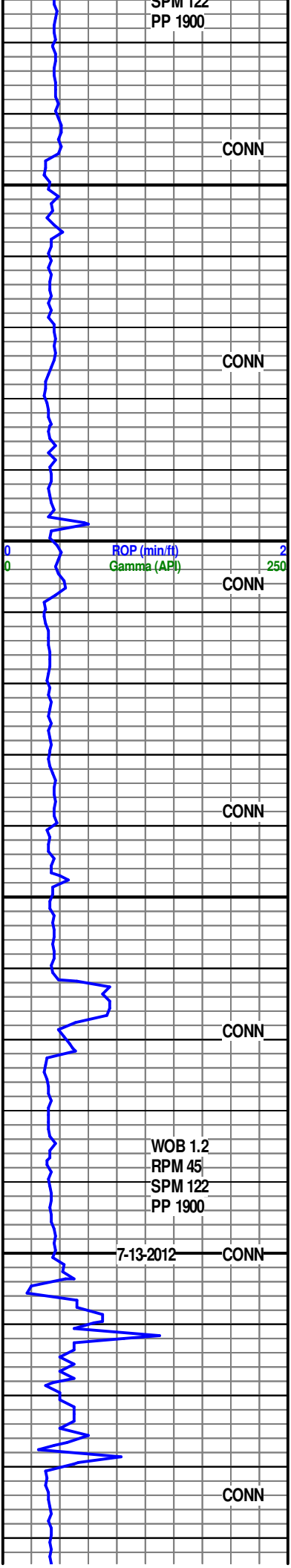








SPM 122  
PP 1900



SH: mGry-GnGry-paRedBrn,  
sbbkly, frm-hd, sbrthy-rthy- sbwxy,  
n-v sli calc; ANHY: offWh-ltGry,  
micro-lvf xln, sbhed-euhed, frm,  
mass ip, sli Dol

CONN

CLYST: ltGry-mGry, sbbkly,  
frm-sft, rthy, sli-mod calc, grdg to  
Sh ip

CONN

SH: BrnGry-mGry, sbbkly, frm-hd,  
sbrthy-rthy- sbwxy, n-v sli calc,  
grdg to CLYST; ANHY: offWh-ltGry,  
micro-lvf xln, sbhed-euhed, frm,  
mass, sli calc

CONN

ANHY: offWh-ltGry, micro-lvf xln,  
sbhed-euhed, frm, mass, sli calc

CONN

SH: BrnGry-mGry, sbbkly, frm-hd,  
sbrthy-rthy- sbwxy, n-v sli calc,  
grdg to CLYST; ANHY: offWh-ltGry,  
micro-lvf xln, sbhed-euhed, frm,  
mass, sli calc

CONN

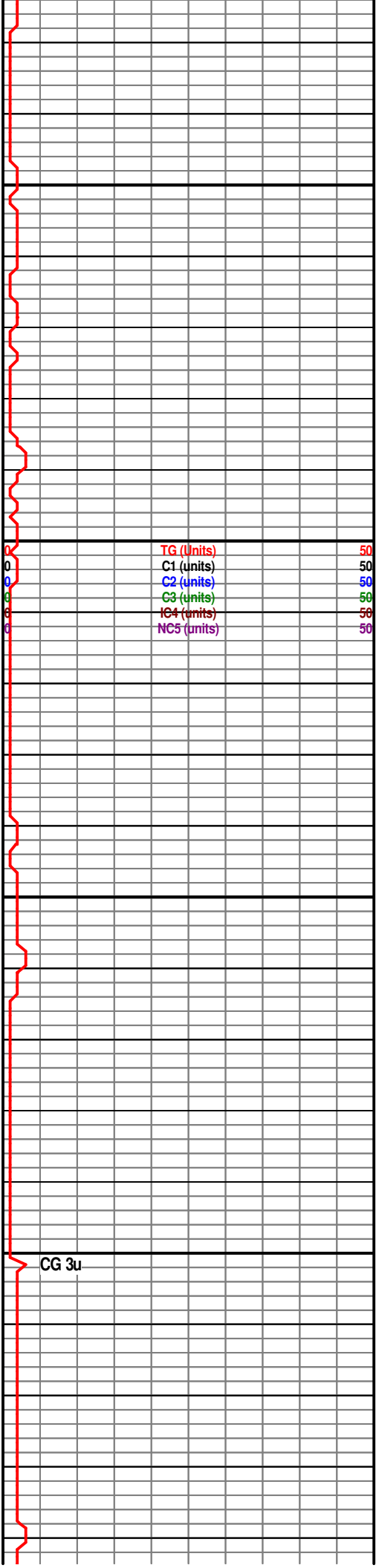
WOB 1.2  
RPM 45  
SPM 122  
PP 1900

7-13-2012

CONN

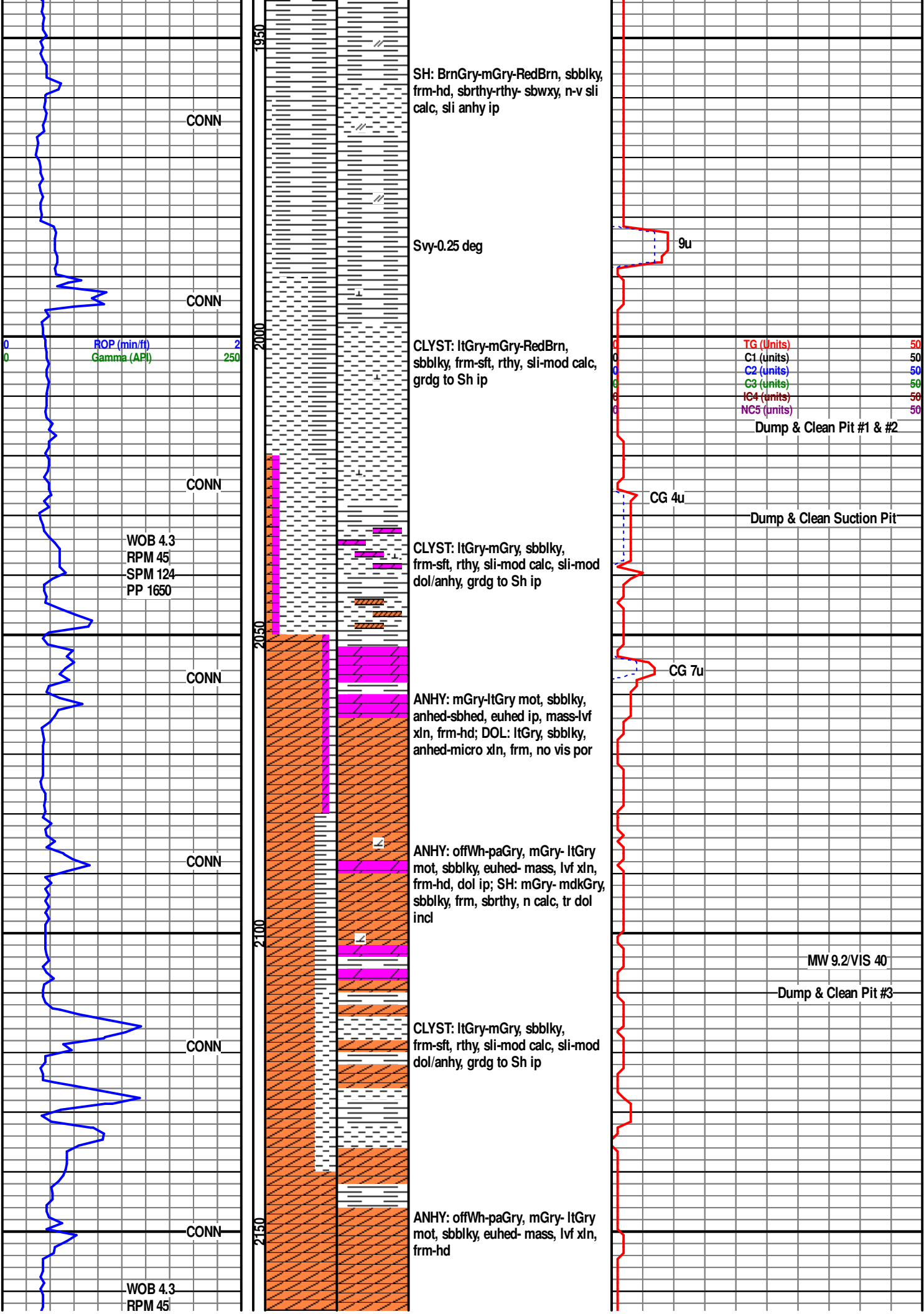
SH: BrnGry-mGry, sbbkly, frm-hd,  
sbrthy-rthy- sbwxy, n-v sli calc,  
grdg to CLYST; ANHY: offWh-ltGry,  
micro-lvf xln, sbhed-anhed, frm, sli  
calc

CONN



TG (Units)	50
C1 (units)	50
C2 (units)	50
C3 (units)	50
IC4 (units)	50
NC5 (units)	50

CG 3u



SPM 120  
PP 1885

CONN

ANHY: offWh-paGry, mGry- ltGry  
mot, sbblky, sbhed- anhed, euhed,  
ip, lvf xln, frm-hd, v sli dol ip,  
intbd w/ Sh

2200

ROP (min/ft) 2  
Gamma (API) 250

CONN

ANHY: offWh-paGry, mGry- ltGry  
mot, sbblky, sbhed- anhed, euhed,  
lvf xln, frm-hd, intbd w/ Sh

2250

CONN

SH: mGry-mod RedBr, blk-  
sbblky, plty, sbrthy, frm-sft, n calc,  
occ Fos, intbd w/ ANHY

MUD @ 2243'  
WT 9.2  
VIS 36  
PV 11  
YP 10  
GELS 7/17  
FIL 60.0  
CK 2  
SOL 6.5  
O/W /93.5  
pH 9.5  
Fil Alk 0.2/0.8  
CI 80K  
TH 120

CONN

ANHY: offWh-paGry, mGry- ltGry  
mot, sbblky, sbhed- anhed, euhed,  
lvf xln, frm-hd, intbd w/ Sh

2300

CONN

ANHY: offWh-paGry, mGry- ltGry  
mot, sbblky, anhed- sbhed, tr  
euhed, lf xln, frm-hd, intbd w/Sh

WOB 6.1  
RPM 45  
SPM 121  
PP 1950

CONN

SH: GryOlVgn-mdkGry-mGry-  
ltBrn, sbblky-sbplty, sbrthy, frm,  
mas, n calc, tr euhed Dol xis; DOL:  
ltGry, sft, micro xln, v arg

Dump & Clean Pit #1 & #2

2350

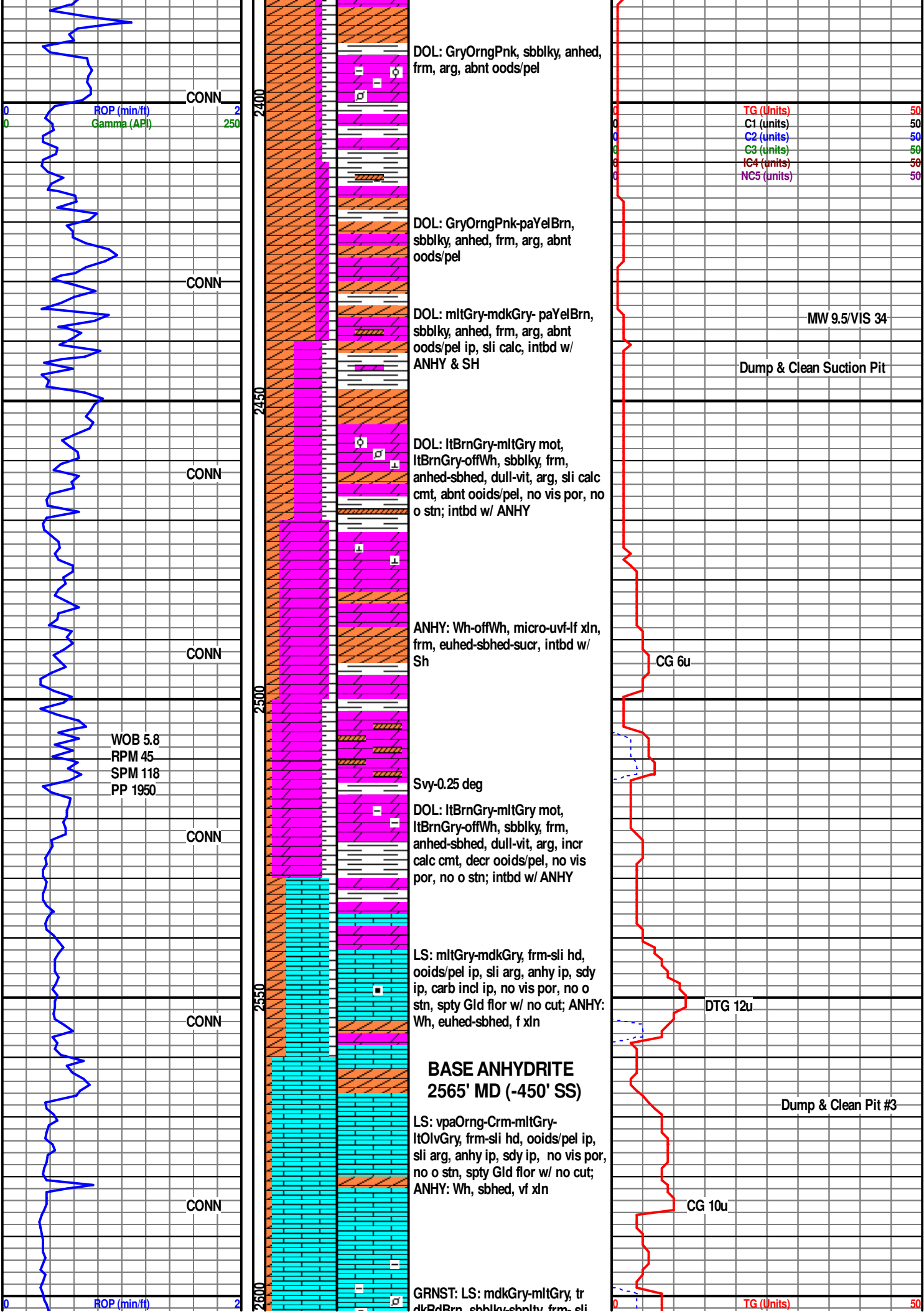
CONN

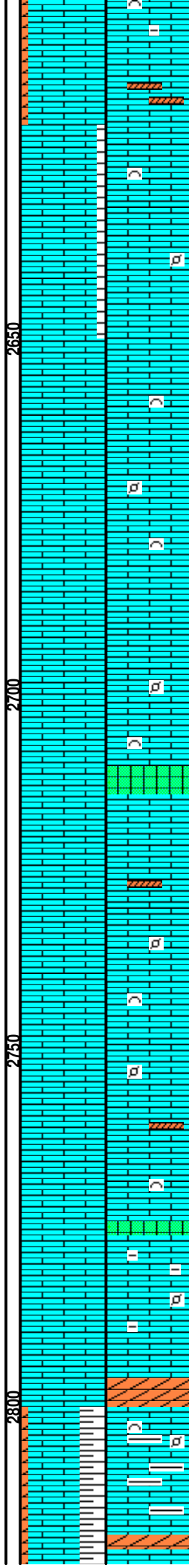
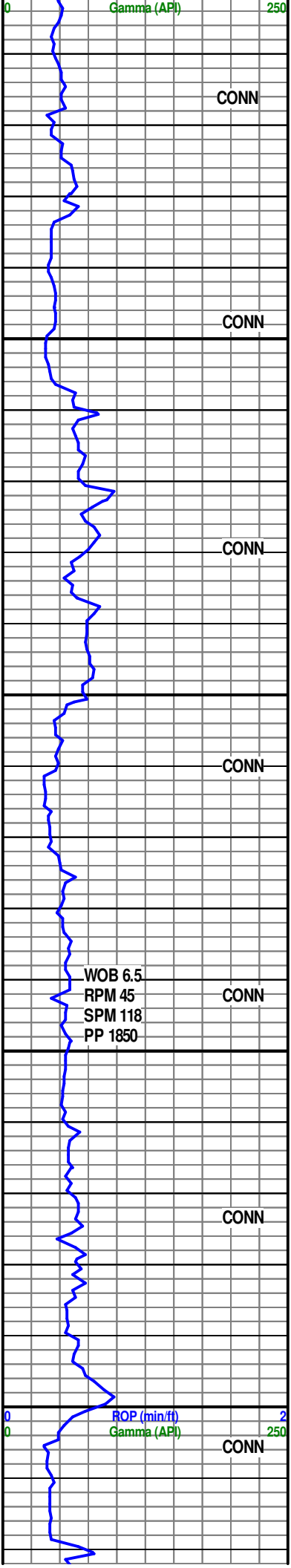
ANHY: Wh-offWh, micro-uvf-lf xln,  
frm, euhed-sbhed-sucr, intbd w/  
Sh; tr SALT

CG 4u

Dump & Clean Pit #3 & #4

TG (Units) 50  
C1 (units) 50  
C2 (units) 50  
C3 (units) 50  
IC4 (units) 50  
NC5 (units) 50





dkRdBn, sbblky-sbpty, n m- sn  
sft, crypt-vf xln, dull-rthy, abnt  
oids/pel/ biocl, tr cln, tr arg, spty  
Gld flor w/ no cut; ANHY: Wh,  
euhed, uvf xln

LS: mdkGry-vpaOrng, sbblky-  
sbpty, v hd, crypt-vf xln, dull-rthy,  
oids/pel/ biocl ip, tr cln, tr arg,  
spty Gld flor w/ no cut; SH:  
dkRdBn, sbblky, sbtrthy, n calc,  
NFSOC

GRNST: LS: mdkGry-mltGry, tr  
dkRdBn, sbblky-sbpty, v hd,  
crypt-vf xln, dull-rthy, abnt  
oids/pel/ biocl, tr cln, tr arg, spty  
Gld flor w/ no cut

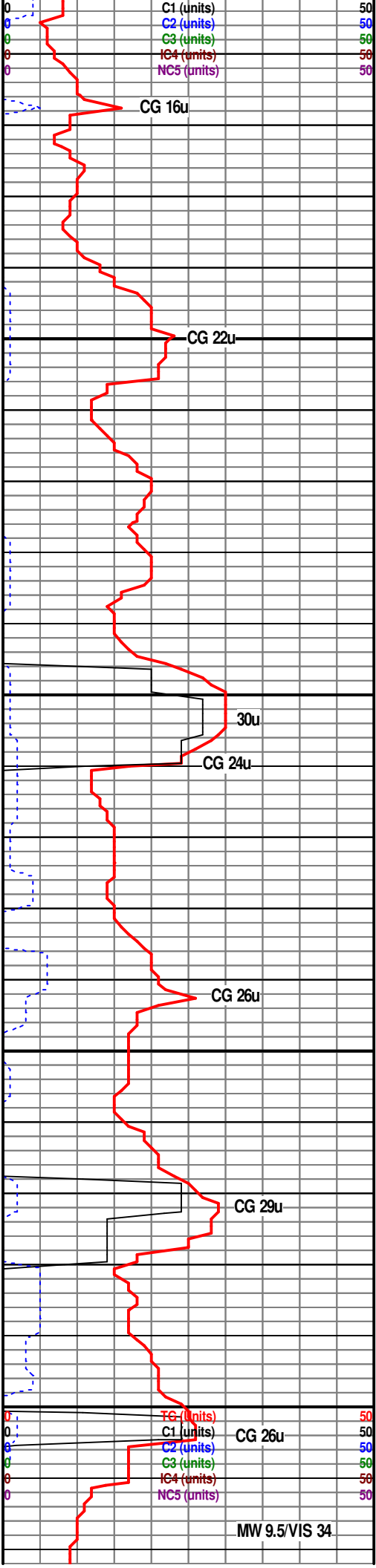
GRNST: LS: mdkGry-mltGry, tr  
dkRdBn, sbblky-sbpty, v hd,  
crypt-vf xln, rsn, abnt ooids/ pel/  
biocl, tr cln, tr arg, tr CALC frac fl,  
tr ANHY strng & rr SALT in spl,  
spty Gld flor w/ no cut

GRNST: LS: mdkGry-mltGry,  
sbblky- sbpty, v hd, crypt-vf xln,  
rsns, abnt ooids/pel/ biocl, tr cln, f  
euhed Dol xls ip, tr CALC frac fl, tr  
ANHY strng & rr SALT in sp', spty  
Gld flor w/ no cut

LS: mdkGry-mltGry, sbblky-  
sbpty, v hd, crypt-vf xln, rsn, abnt  
oids/pel ip, abnt biocl ip, tr CALC  
frac fl, tr ANHY strng & rr SALT in  
spl, spty Gld flor w/ no cut

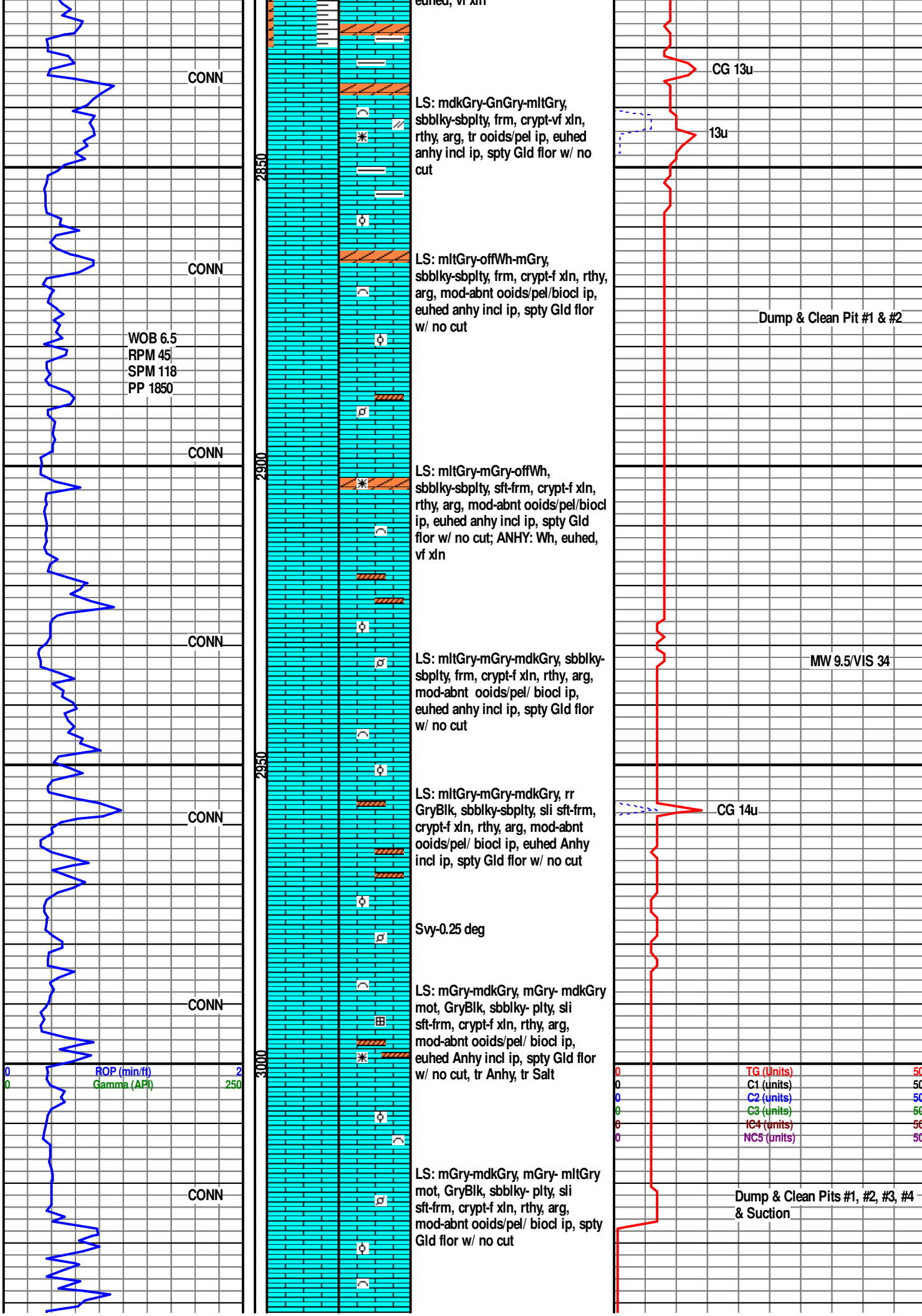
LS: mdkGry-mltGry, sbblky-  
sbpty, v hd, crypt-vf xln, rsn, abnt  
oids/pel ip, abnt biocl ip, tr  
ANHY strng & rr SALT in spl, spty  
Gld flor w/ no cut

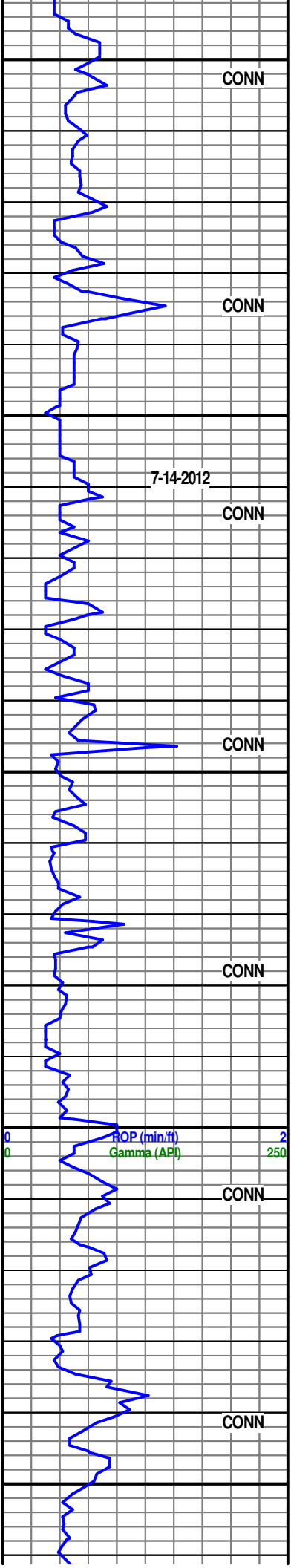
LS: mdkGry-mltGry, sbblky-  
sbpty, v hd, crypt-vf xln, rsn, abnt  
oids/pel ip, abnt biocl ip, spty  
Gld flor w/ no cut; ANHY: Wh,  
euhed, uvf xln



WOB 6.5  
RPM 45  
SPM 118  
PP 1850

MW 9.5/VIS 34





3050  
3100  
3150  
3200  
3250

CONN

CONN

7-14-2012

CONN

CONN

CONN

CONN

CONN

LS: Crm-mGry-mdkGry, mGry-mltGry mot, GryBlk, sbblky-plty, sft, crypt-f xln, rthy, arg, mod-abnt ooids/pel/ biocl ip, spty Gld flor w/ no cut

LS: Crm-ltBrnGry,-mltGry, sbblky, sli sft, crypt-f xln, rthy, arg, mod-abnt ooids/pel/ biocl ip, spty dl Gld & Yel flor w/ no cut

LS: ltBrnGry-paBrn-vpaOrng, vapOrng-paBrn mot, sbblky, frm-sli hd, crypto xln, abnt ooids/pel/fos ip, mod arg, tr-mod o stn, spty gd bri Yel flor w/ no cut

LS: ltBrnGry-paBrn-vpaOrng, vapOrng-paBrn mot, mdkGry w/ scat pp Pyr, sbblky, frm-sli hd, crypto xln, abnt ooids/ pel/fos thru, mod arg ip, tr-mod o stn, gd bri Yel flor w/ no cut

LS: vpaOrng-ltYelGry mot, ltBrnGry-paBrn, vapOrng- paBrn mot, mdkGry, sbblky, frm-sli hd, mas, chky, abnt ooids/pel/biocl thru, mod arg ip, tr o stn, spty dl Gld & Yel flor w/ no cut

LS: vpaOrng-ltYelGry mot, ltBrnGry-paBrn, vapOrng- offWh mot, mGry, sbblky, frm, mas, chky, abnt ooids/ pel/biocl thru, mod arg ip, tr o stn, gd bri Yel-Gld-Brn flor w/ no cut

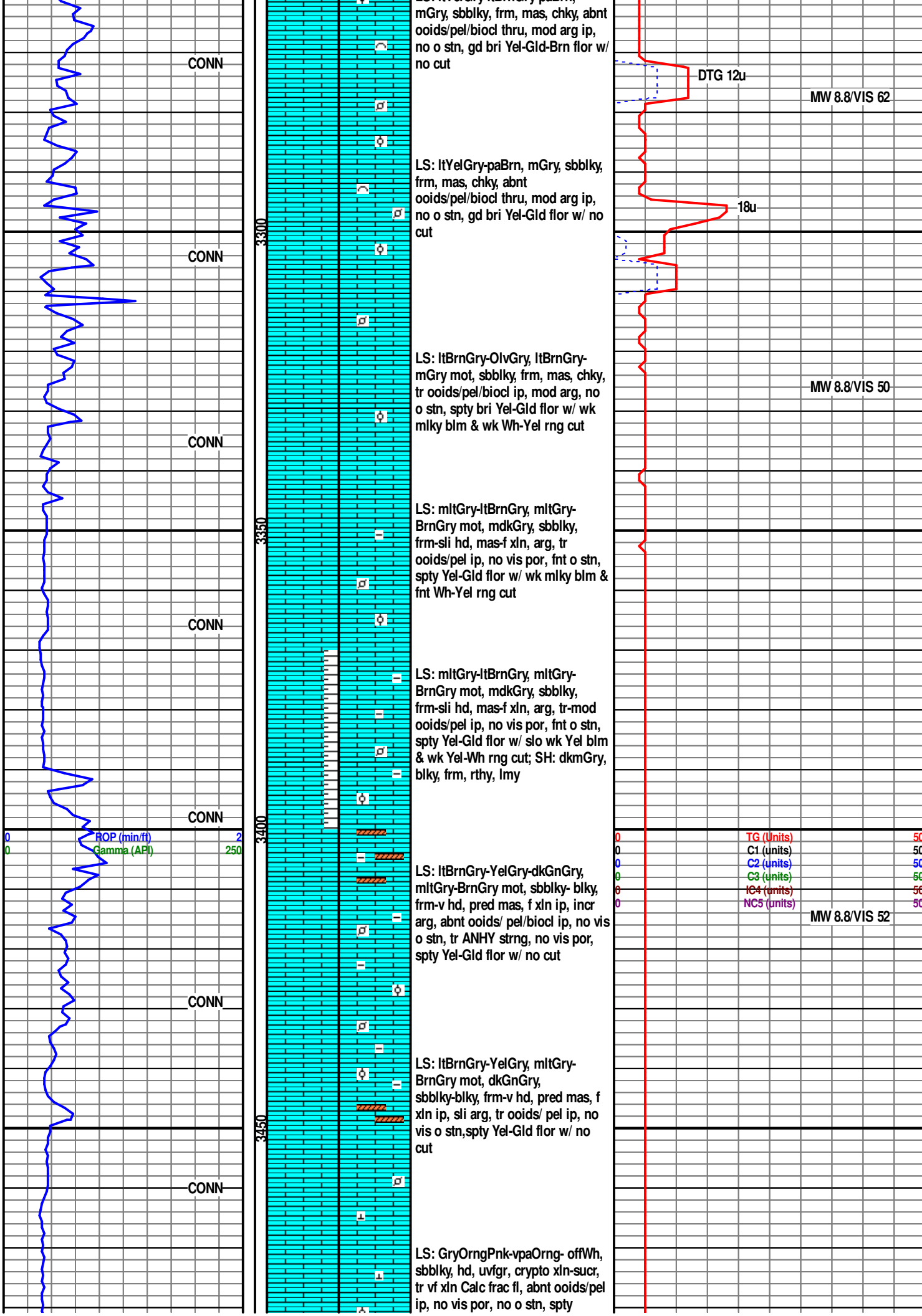
LS: ltYelGrv-ltBrnGrv-paBrn.

Repairing Generator

Repairing Generator

MW 8.7/VIS 77

TG (Units)	50
C1 (units)	50
C2 (units)	50
C3 (units)	50
IC4 (units)	50
NC5 (units)	50



CONN

CONN

CONN

CONN

CONN

CONN

CONN

LS: mGry, sbblky, frm, mas, chky, abnt ooids/pel/biocl thru, mod arg ip, no o stn, gd bri Yel-Gld-Brn flor w/ no cut

LS: ltYelGry-paBrn, mGry, sbblky, frm, mas, chky, abnt ooids/pel/biocl thru, mod arg ip, no o stn, gd bri Yel-Gld flor w/ no cut

LS: ltBrnGry-OlvGry, ltBrnGry-mGry mot, sbblky, frm, mas, chky, tr ooids/pel/biocl ip, mod arg, no o stn, spty bri Yel-Gld flor w/ wk milky blm & wk Wh-Yel rng cut

LS: mltGry-ltBrnGry, mltGry-BrnGry mot, mdkGry, sbblky, frm-sli hd, mas-f xln, arg, tr ooids/pel ip, no vis por, fnt o stn, spty Yel-Gld flor w/ wk milky blm & fnt Wh-Yel rng cut

LS: mltGry-ltBrnGry, mltGry-BrnGry mot, mdkGry, sbblky, frm-sli hd, mas-f xln, arg, tr-mod ooids/pel ip, no vis por, fnt o stn, spty Yel-Gld flor w/ slo wk Yel blm & wk Yel-Wh rng cut; SH: dkmGry, blk, frm, rthy, lmy

LS: ltBrnGry-YelGry-dkGnGry, mltGry-BrnGry mot, sbblky-blky, frm-v hd, pred mas, f xln ip, incr arg, abnt ooids/ pel/biocl ip, no vis o stn, tr ANHY strng, no vis por, spty Yel-Gld flor w/ no cut

LS: ltBrnGry-YelGry, mltGry-BrnGry mot, dkGnGry, sbblky-blky, frm-v hd, pred mas, f xln ip, sli arg, tr ooids/ pel ip, no vis o stn, spty Yel-Gld flor w/ no cut

LS: GryOrngPnk-vpaOrng- offWh, sbblky, hd, uvfgr, crypto xln-sucr, tr vf xln Calc frac fl, abnt ooids/pel ip, no vis por, no o stn, spty

DTG 12u

MW 8.8/VIS 62

18u

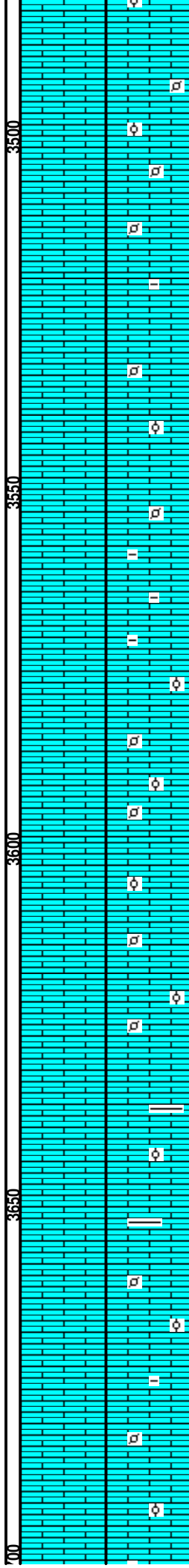
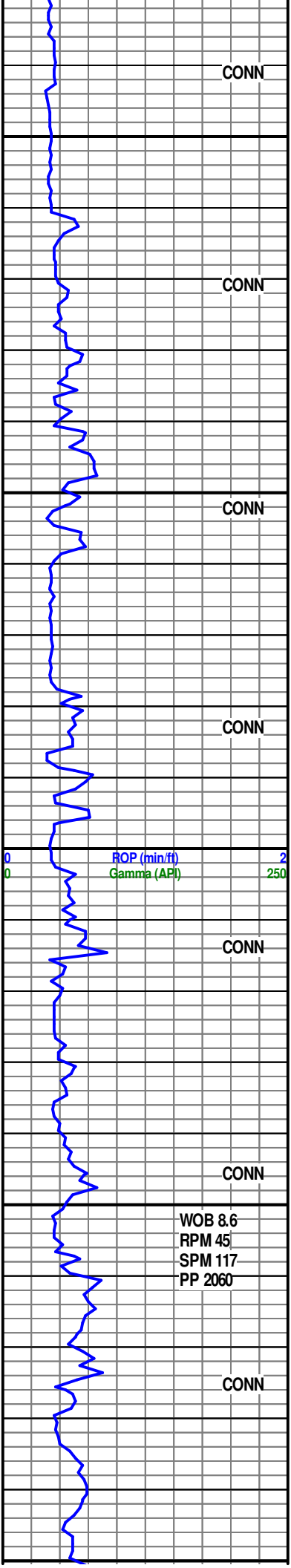
MW 8.8/VIS 50

TG (Units) 50  
 C1 (units) 50  
 C2 (units) 50  
 C3 (units) 50  
 IC4 (units) 50  
 NC5 (units) 50

MW 8.8/VIS 52

ROP (min/ft) 2  
 Gamma (API) 250

3300  
3350  
3400  
3450



Yel-Gld flor w/ no cut

CONN

3500

LS: GryOrngPnk-vpaOrng- offWh, sbbly, hd, uvgr, crypto xln-sucr, incr ooids/ pel ip, no o show, no vis por, spty Yel-Gld-paVio flor w/ no cut

CONN

3550

LS: GryOrng-BrnGry, sbbly, sli sft, chky, sucr, lvgr, ooids/pel ip, arg ip, no vis por, no o stn, spty Yel-Gld- paVio flor w/ no cut

CONN

3600

LS: GrnGry-GryOrng, sbbly, sli sft, chky, sucr, lvgr, ooids/ pel ip, arg ip, no vis por, no o stn, spty Yel-Gld-paVio flor w/ no cut

CONN

3650

LS: GryOrngPnk-vpaOrng-offWh-BrnGry, sbbly, frm-sli hd, uvgr, crypto xln-sucr, incr ooids/pel, no o show, no vis por, spty Yel-Gld-paVio flor w/ no cut

CONN

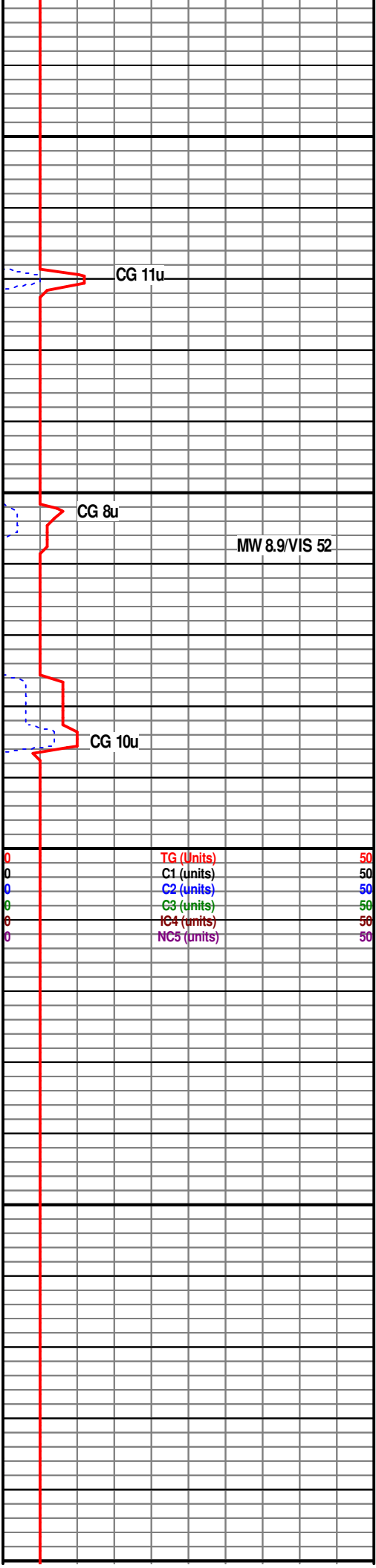
3700

LS: GryOrngPink, tr GrnGry, blk, frm-hd, mas, occ ooids/ pel, chky-sbwxy, no vis por, tr fnt o stn, tr Sh lam, spty Yel-Gld-paVio flor w/ no cut

CONN

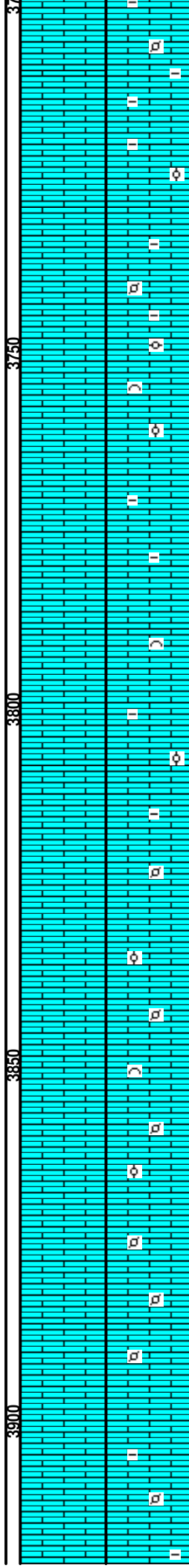
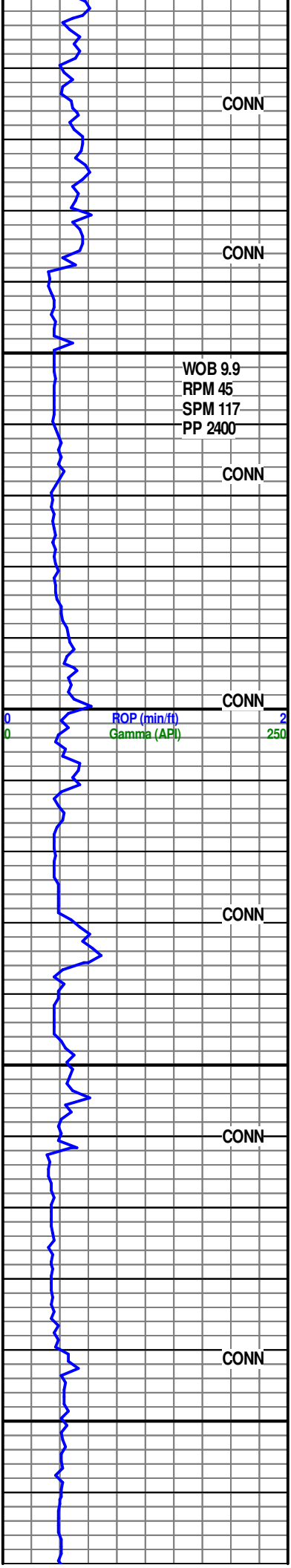
3750

LS: GryOrngPink, tr GrnGry, blk, frm-sli sft, mas, occ ooids/ pel, chky-sbwxy, no vis por, tr fnt o stn, spty Yel-Gld-paVio flor w/ no cut



WOB 8.6  
RPM 45  
SPM 117  
PP 2060

TG (Units)	50
C1 (units)	50
C2 (units)	50
C3 (units)	50
IC4 (units)	50
NC5 (units)	50



CONN  
 LS: GryOrngPnk-paBrn-ltGry, blkly, sft, mas, occ ooids/ pel, chky-sbwxy, no vis por, tr fnt o stn, spty Yel-Gld-paVio flor w/ no cut

CONN

LS: ltBrnGry-ltGry, blkly- sbblky, frm-sft, mas, abnt ooids/pel/biocl, chky-sbwxy, no vis por, tr fnt o stn, spty Yel-Gld-paVio flor w/ fnt slo mlky blm & fnt Wh rng cut

WOB 9.9  
 RPM 45  
 SPM 117  
 PP 2400

CONN

LS: ltBrnGry-ltGry, blkly- sbblky, v sft, mas, chky, abnt ooids/pel/biocl, no vis por, tr fnt o stn, spty Yel-Gld-paVio flor w/ no cut

CONN

ROP (min/ft) 2  
 Gamma (API) 250

LS: ltBrnGry-GryOrngPnk, blkly-sbblky, v sft, mas, chky, abnt ooids/pel/biocl, tr arg lam, no vis por, tr fnt o stn, spty Yel-Gld-paVio flor w/ no cut

TG (Units) 50  
 C1 (units) 50  
 C2 (units) 50  
 C3 (units) 50  
 C4 (units) 50  
 NC5 (units) 50

WT 9.0/VIS 48

CONN

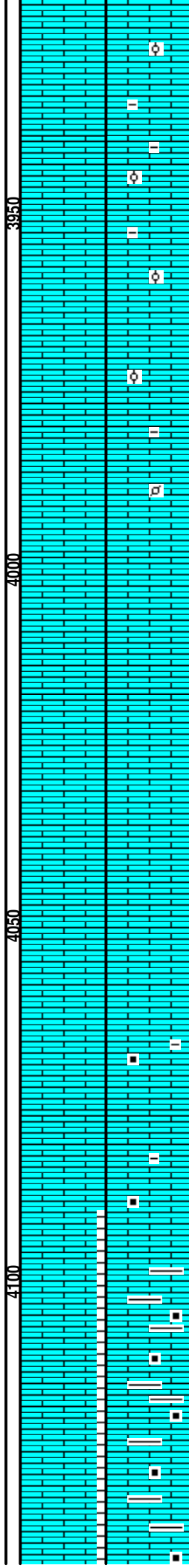
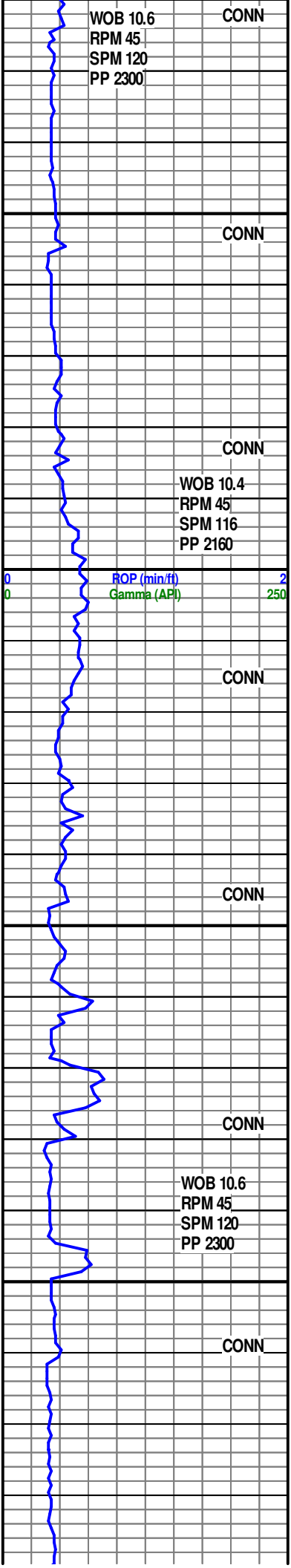
LS: GryOrngPnk-ltBrnGry-tr GnGry, blkly- sbblky, sli sft, mas-lfgr, chky, abnt ooids/ pel, v arg, no vis por, no o stn, spty Yel-Gld-paVio flor w/ no cut

CONN

LS: GryOrngPnk-ltBrnGry-tr GnGry, blkly-sbblky, frm-sli sft, mas-lfgr, chky, abnt ooids/pel/bio, v arg, no vis por, no o stn, wk paVio & Yel flor w/ no cut

CONN

LS: mGry-ltGry mot, sbblky, hd, mas-micro xln, chky, tr ooids/pel/bio, v arg, no vis por, no o stn, spty dl Gld flor w/ no cut



LS: GryOrngPnk-ltBrnGry, mGry-ltGry mot, sbblky, hd, mas-micro xln, chky, tr ooids/pel/bio, v arg, no vis por, no o stn, spty dl Gld flr w/ bri Wh strmg cut & no rng cut

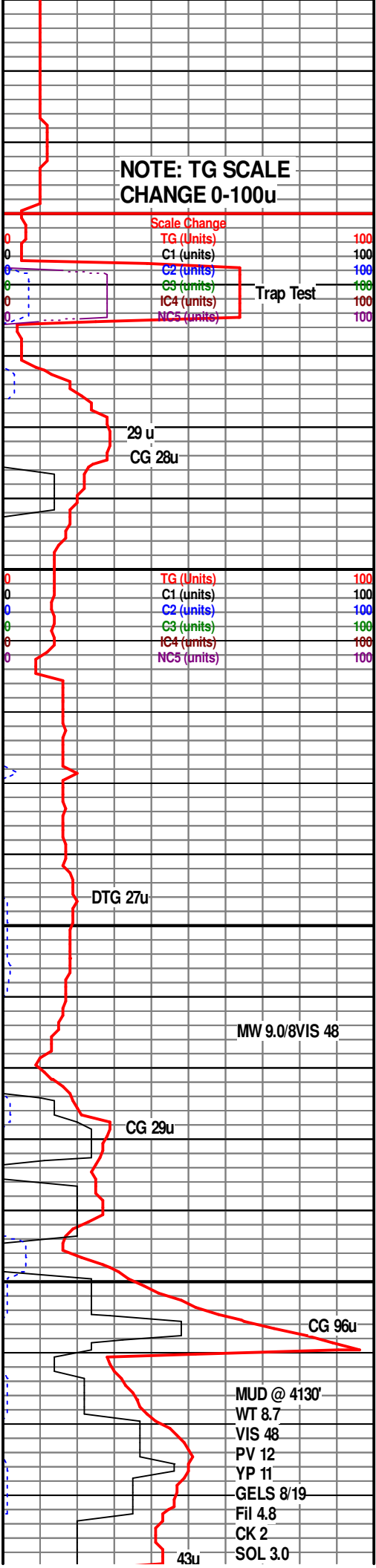
LS: GryOrngPnk-ltBrnGry, mGry-ltGry mot, sbblky, hd, mas-micro xln, chky, tr ooids/pel/bio, v arg, no vis por, no o stn, spty dl Gld flr w/ no blm no cut

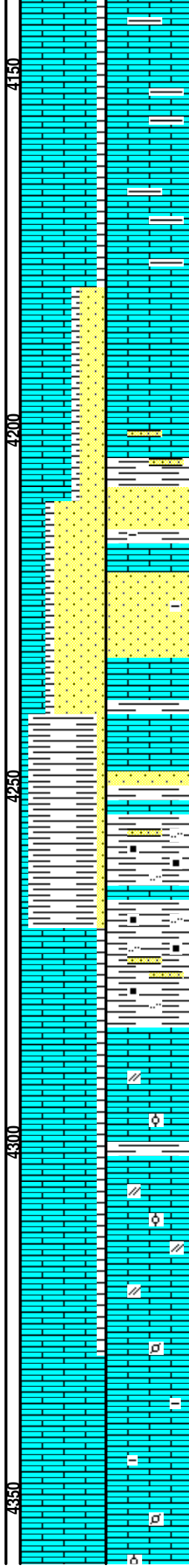
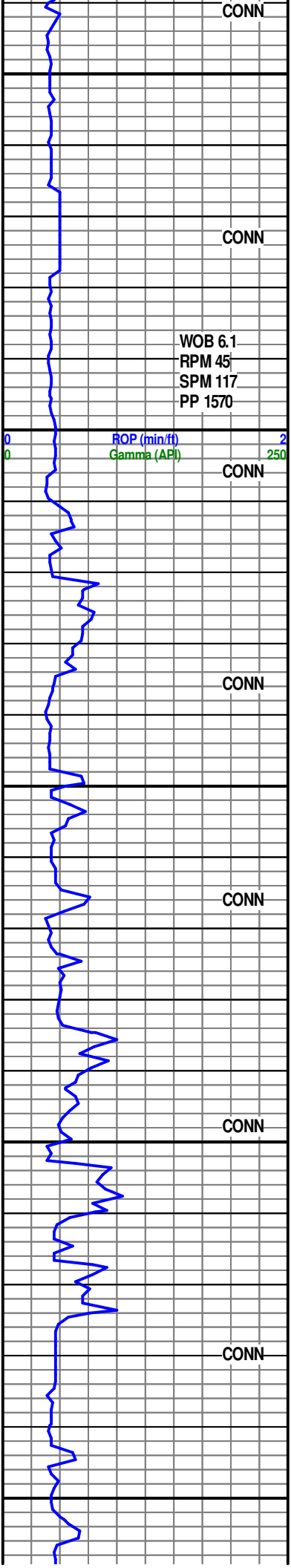
LS: GryOrngPnk-paBrn-ltGry-mdkGry, blk, sft, mas, occ ooids/pel, chky-sbwxy, no vis por, tr fnt o stn, spty dl Gld flr w/ no cut

LS: ltBrnGry-Crm mot, ltBrnGry, blk, hd, mas, occ ooids/pel, chky-sbwxy, no vis por, wk o stn, spty dl Gld flr w/ no cut

LS: GryOrngPnk-paBrn-ltGry-mdkGry-BrnBlk, blk, sli hd- sft, mas, occ ooids/pel, chky-sbwxy-sbrthy, carb ip, shly ip, no vis por, spty dl Gld flr w/ no cut

LS: mdkGry-BrnBlk-GryOrngPnk-paBrn-ltGry, blk, sli sft frm, mas, occ ooids/pel, chky-sbrthy, abnt carb ip, v shly ip, no vis por, spty dl Gld flr w/ no cut; grdg to SH: Blk-GryBlk, blk-pty, frm, rthy, sli-v calc, NFSOC





LS: mdkGry-BrnBlk-paBrn- ltGry, blky, sli sft frm, mas, occ ooids/pel, chky-sbrthy, abnt carb ip, v shly ip, no vis por, spty dl Gld flr w/ no cut; grdg to SH: Blk-GryBlk, blky- plty, frm, rthy, sli-v calc, NFSOC

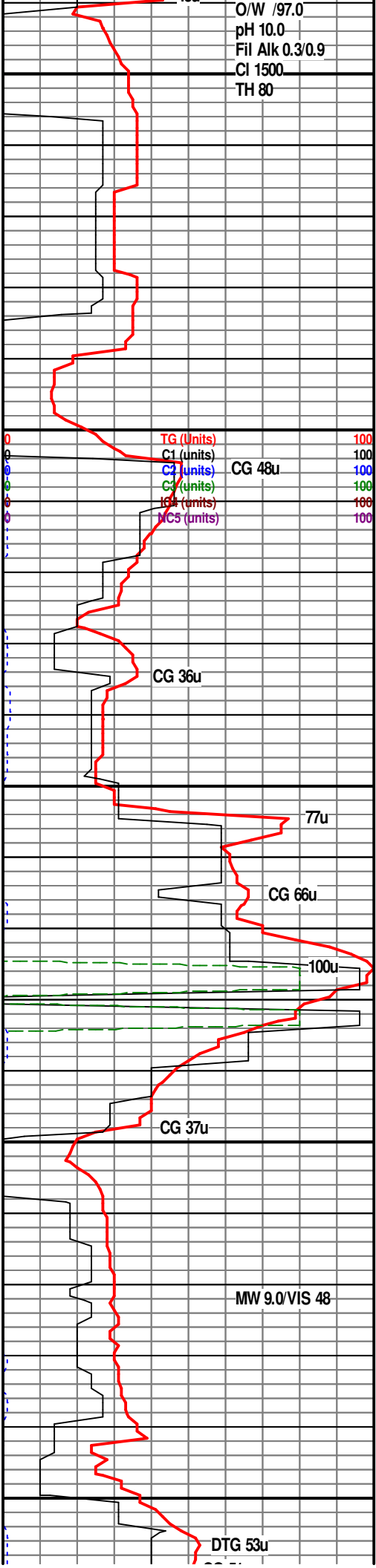
SS: mltGry-ltGry, lf-uvf-ufgr, w rnd, w srt, mod-w cmt, sli lmy, scat carb frag thru, arg ip, sli-no is por, NFSOC

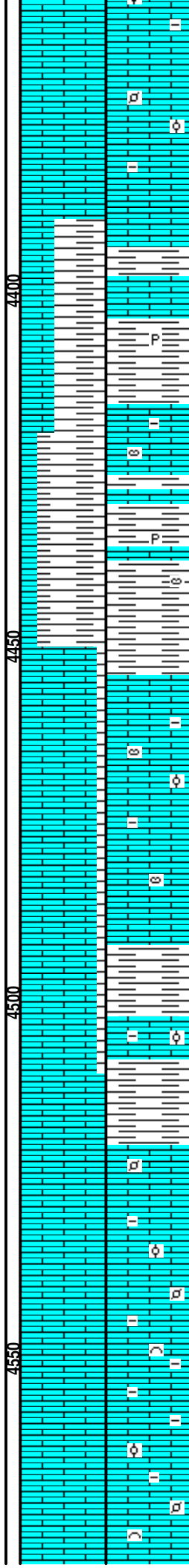
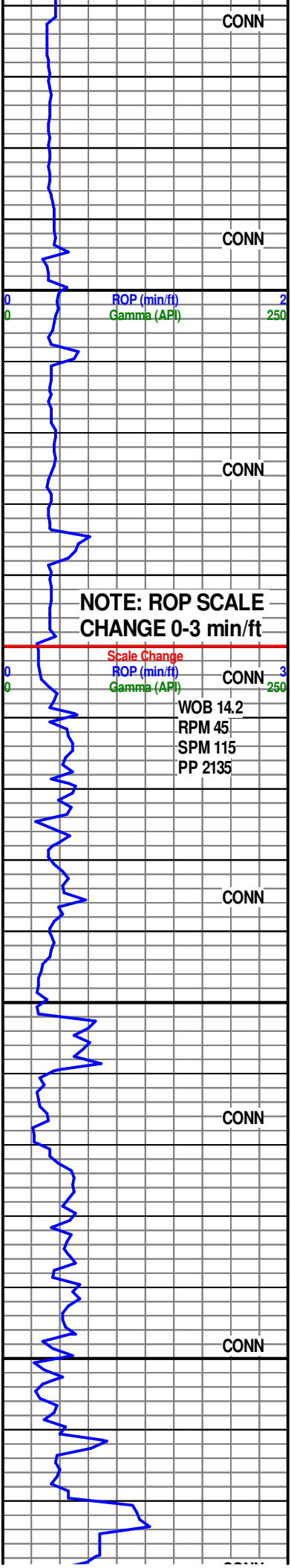
SH: OlivBlk-Blk, blky, frm-hd, rthy, carb, stly, sdy ip, sli calc, NFSOC

**BASE HEEBNER SHALE**  
4284' MD (-2164' SS)

LS: YelBrn-paBrn mot, paBrn, sbbkly-blky, frm-sft, crypto xln, arg, dull, chky, sli anhy, abnt ooids/pel/biocl ip, cln ip, spty gld flr w/ wk Wh strmg cut & no rng cut

LS: dskyYelBrn-paBrn mot, paBrn-dsky YelBrn, sbbkly- blky, frm-sft, crypto xln-uvf xln, arg, dull, chky, ufgr, abnt ooids/pel/biocl ip, cln ip, spty gld flr w/ no cut





LS: mGry-mdkGry, blk- sbblky, sli sft, crypto xln, uvgr ip, arg, mod ooids/pel/ biocl, no vis por, no vis o stn, NFSOC

SH: mdkGry-mGry, sbblky, sft, abnt sil lvgr thru, sli- mod calc, rthy, rr pp Pyr, NFSOC

**LANSING LS/SH  
4435' MD (-2314' SS)**

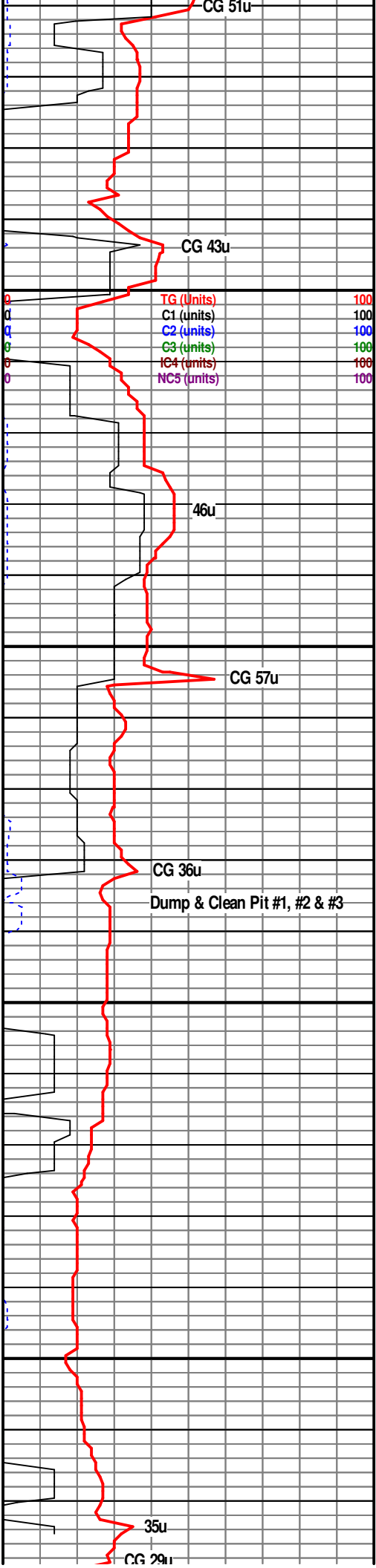
SH: mGry, sbblky, sft, abnt sil lvgr thru, sli-mod calc, rthy, rr pp Pyr, NFSOC; intbd w/ LS: vpaOrng-YelGry, sbplty, crypt xln, v hd, arg, abnt ooids/ pel/Echin thru, gd Gld flr w/ no cut

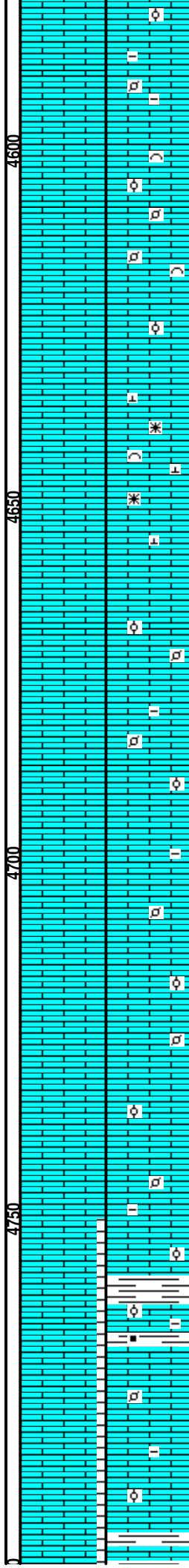
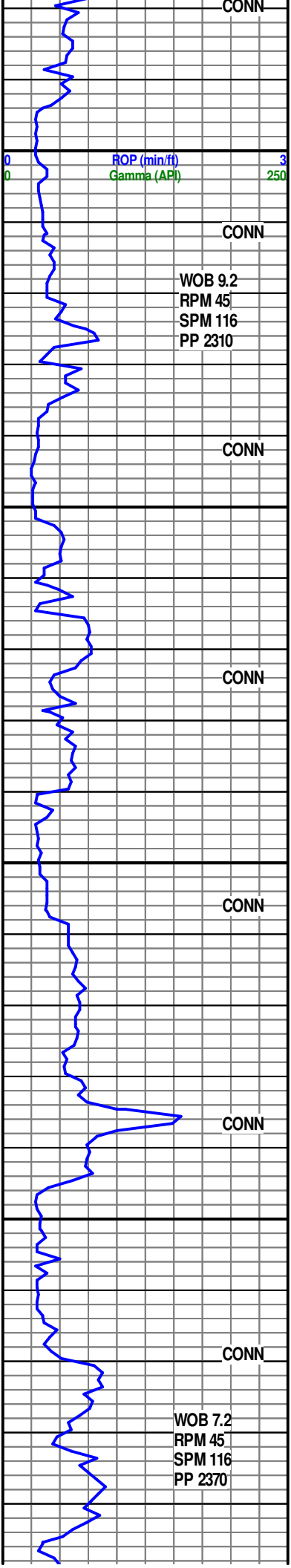
LS: GryOrngPnk-ItBrnGry mot, mGry, blk- sbblky, crypt xln, frm, arg, abnt Echin, ooids/pel thru, NFSOC

LS: GryOrngPnk-ItBrnGry - ItOlvGry, blk- sbblky, crypt xln, frm-hd, decr arg, abnt ooids/pel/Echin thru, spty dl Gld flr w/ no cut; SH: mdkGry, plty, frm-hd, rthy, n-v sli calc, NFSOC

LS: PaBrn-ItBrnGry-ItOlvGry, blk- sbblky, crypt xln, frm- hd, sli arg, abnt ooids/pel thru, no vis por, no o stn, spty dl Gld flr w/ no cut

LS: PaBrn-ItBrnGry-mGry, blk- sbblky, f-crypt xln, frm-hd, sli-mod arg, abnt ooids/pel/biocl thru, no vis por, no o stn, spty dl Gld flr w/ no cut





LS: PaBrn-ltBrnGry-mGry, tr Blk, blk-sbblky, f-crypt-micro xln, frm-hd, sli arg, decr ooids/pel/biocl thru, nop vis por, no o stn, spty dl Gld flor w/ no cut

LS: offWh-paBrn, sbblky-blky, f-crypt xln, frm-hd, dull-sbvit, ooids/pel/biocl thru, no vis por, no o stn, NFSOC

LS: PaBrn-ltBrnGry-mGry, tr Blk, blk-sbblky, f-crypt xln-micro xln, frm-hd, sbvit, sli arg, ooids/pel/biocl thru, abnt euhed vf xln Calc, NFSOC

LS: GryOrngPnk-ltBrnGry - ltOlvGry, blk-sbblky, crypt xln, sft-frm, chky, sli arg, mod ooids/pel thru, NFSOC

LS: Crm-paBrn-ltBrnGry, blk-sbblky, crypt xln, hd-frm, vit, sli arg, mod ooids/pel thru, no vis por, fnt o stn ip, fnt dlGld & paVio flor w/ no cut

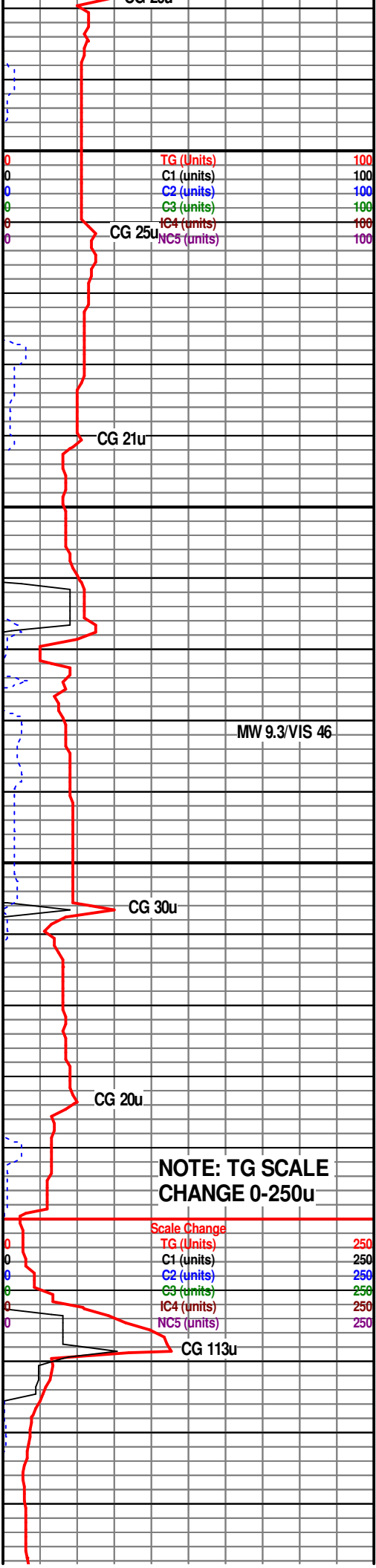
LS: Crm-modOrngPnk-paBrn-ltBrnGry, sbblky, crypt xln, hd-frm, vit, chky, v sli arg, mod-abnt ooids/pel thru, no vis por, fnt o stn ip, fnt dlGld & paVio flor w/ no cut

LS: Crm-modOrngPnk-paBrn-ltBrnGry, sbblky, crypt xln, hd-frm, vit, chky, v sli arg, mod-abnt ooids/pel thru, no vis por, fnt o stn ip, fnt paVio flor w/ no cut; SH: GryBlk-Blk, sbblky, frm, rthy, sli carb ip, fnt dl Gld flor w/ no cut

LS: modOrngPnk-paBrn, sbblky, crypt xln, hd-frm, vit, chky, v sli arg, mod-abnt ooids/pel thru, no vis por, fnt o stn ip, fnt paVio flor w/ no cut

CONN  
WOB 9.2  
RPM 45  
SPM 116  
PP 2310

CONN  
WOB 7.2  
RPM 45  
SPM 116  
PP 2370



**NOTE: TG SCALE CHANGE 0-250u**

Scale Change  
TG (Units) 250  
C1 (units) 250  
C2 (units) 250  
C3 (units) 250  
C4 (units) 250  
C5 (units) 250

CG 25u  
TG (Units) 100  
C1 (units) 100  
C2 (units) 100  
C3 (units) 100  
C4 (units) 100  
C5 (units) 100

CG 30u

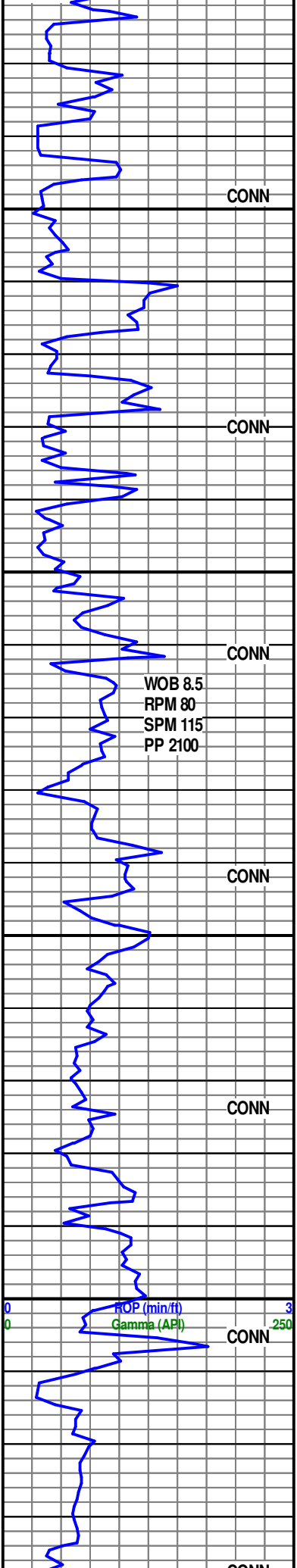
CG 20u

CG 113u

MW 9.3/VIS 46



7-15-2012



CONN

CONN

CONN

CONN

CONN

CONN

CONN

WOB 8.5  
RPM 80  
SPM 115  
PP 2100

ROP (min/ft)  
Gamma (API)

### CHEROKEE SH 5024' MD (-2903' SS)

LS: GryOrng-offWh-GryBlk, sbbkly, plty, crypt-f xln, frm, chky, sli-v arg, tr-mod ooids/ pel thru, no vis por, fnt o stn ip, fnt dl Gld & paVio flor w/ no cut

LS: GryOrng-offWh, sbbkly, crypt-f xln, sft, chky, sli arg, mod ooids/pel thru, no vis por, fnt o stn ip, fnt dl Gld & paVio flor w/ no cut

### MISS UNCOMFORMITY 5092' MD (-2971' SS)

### MISS CHT/LS/DOL 5101' MD (-2980' SS)

LS: GryOrng-paBrn, sbbkly, crypt-f xln, sft, chky, sli arg, mod ooids/pel thru, no vis por, fnt o stn ip, fnt dl Gld & paVio flor w/ no cut; SH: mdkGry-GryBlk, sbbkly, hd, n calc, sbrthy, carb ip

LS: GryOrngPnk-ltBrn, sbbkly, crypt xln, fg ip, sft, chky, sli arg, mod ooids/pel thru, no vis por, fnt o stn ip, fnt dl Gld & paVio flor w/ no cut

LS: GryOrng-offWh, sbbkly, sft-frm, crypt-sucr-uvfgr, mod ooids/pel/biocl, no vis por, fnt o stn ip, rr Glau, euhd f xln Dol incl, gd Gld flor w/ wk mlky blm & wk Wh rng cut

LS: GryOrng-offWh, sbbkly, sft-frm, crypt-sucr-uvfgr, mod ooids/pel/biocl, no vis por, fnt o stn ip, euhd f xln Dol incl, fnt dl Gld & paVio flor w/ no cut

5050  
5100  
5150  
5200

**NOTE: TG SCALE CHANGE 0-200u**

Scale Change	
TG (Units)	200
C1 (units)	200
C2 (units)	200
C3 (units)	200
IC4 (units)	200
NC5 (units)	200

CG 137u

CG 204u  
MW 9.1/VIS 52

CG 667u

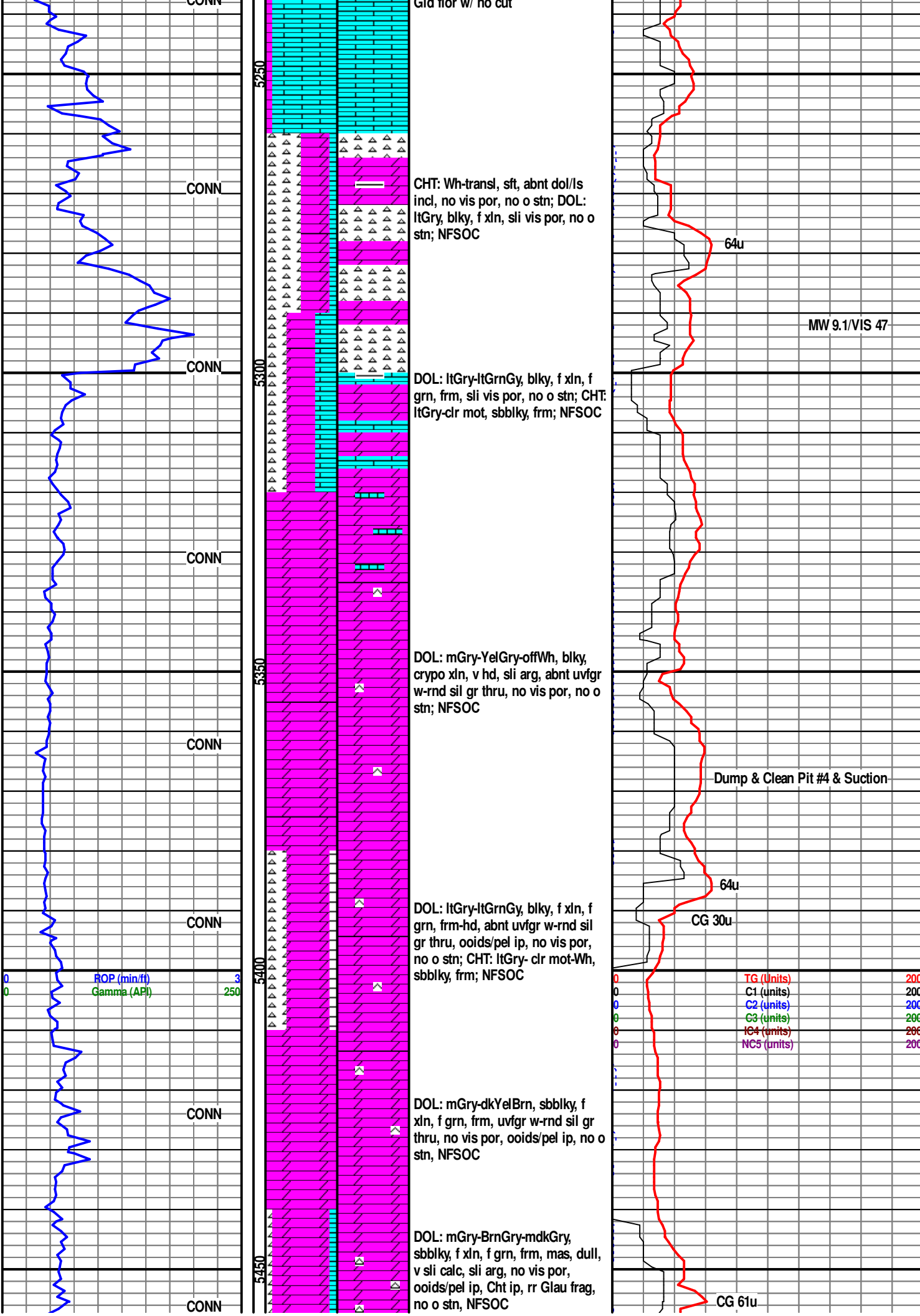
Dump & Clean Pit #3

CG 92u

MW 9.0/VIS 62  
133u

TG (Units)	200
C1 (units)	200
C2 (units)	200
C3 (units)	200
IC4 (units)	200
NC5 (units)	200

78u



Gid floor w/ no cut

CONN

CHT: Wh-transl, stf, abnt dol/l's  
incl, no vis por, no o stn; DOL:  
ltGry, blk, f xln, sli vis por, no o  
stn; NFSOC

64u

MW 9.1/VIS 47

CONN

DOL: ltGry-ltGrnGy, blk, f xln, f  
grn, frm, sli vis por, no o stn; CHT:  
ltGry-clr mot, sbbkly, frm; NFSOC

CONN

DOL: mGry-YelGry-offWh, blk,  
cryo xln, v hd, sli arg, abnt uvgr  
w-rnd sil gr thru, no vis por, no o  
stn; NFSOC

Dump & Clean Pit #4 & Suction

CONN

DOL: ltGry-ltGrnGy, blk, f xln, f  
grn, frm-hd, abnt uvgr w-rnd sil  
gr thru, ooids/pel ip, no vis por,  
no o stn; CHT: ltGry-clr mot-Wh,  
sbbkly, frm; NFSOC

64u

CG 30u

ROP (min/ft) 3  
Gamma (API) 250

TG (Units)	200
C1 (units)	200
C2 (units)	200
C3 (units)	200
IC4 (units)	200
NC5 (units)	200

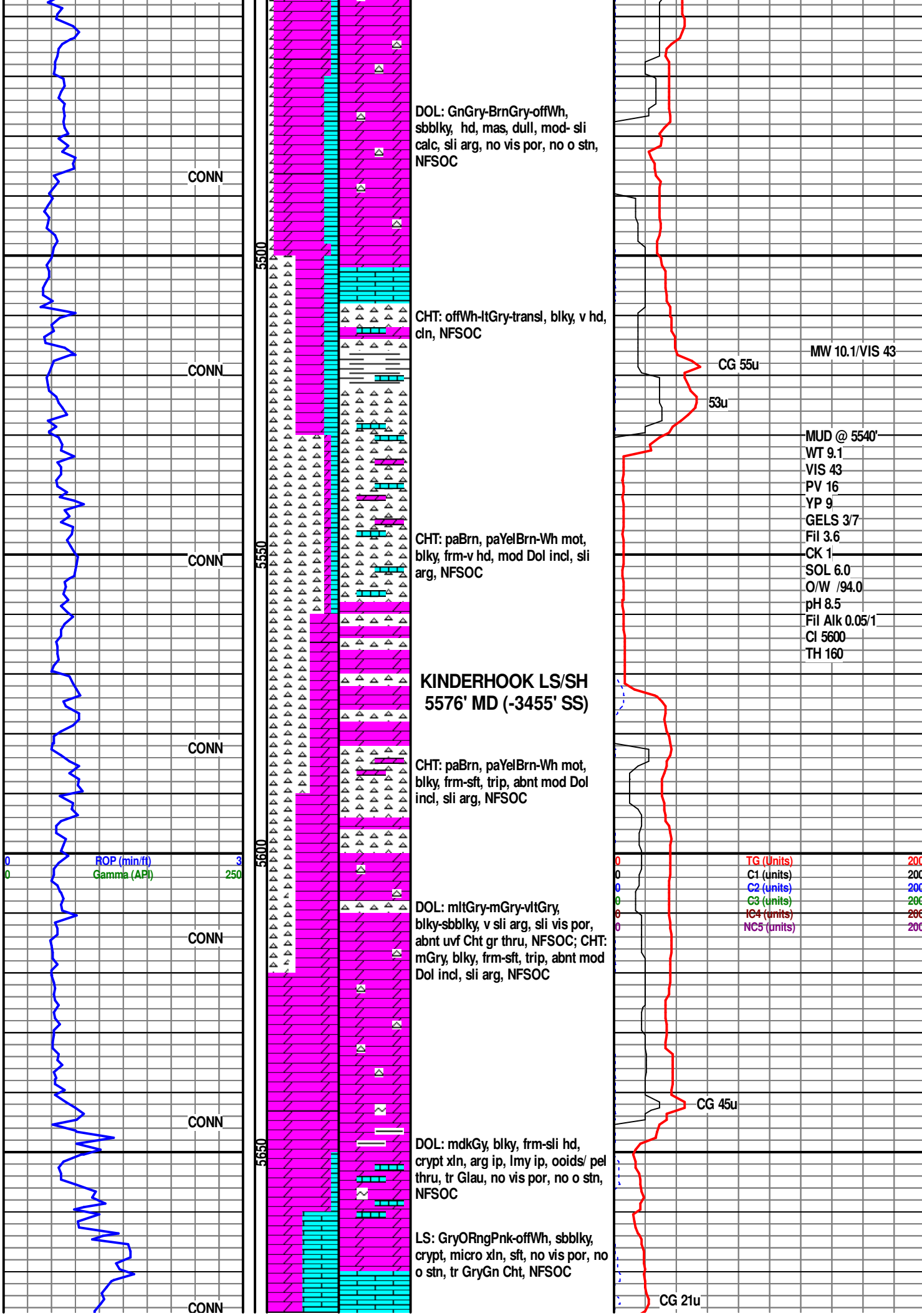
CONN

DOL: mGry-dkYelBrn, sbbkly, f  
xln, f grn, frm, uvgr w-rnd sil gr  
thru, no vis por, ooids/pel ip, no o  
stn, NFSOC

CONN

DOL: mGry-BrnGry-mdkGry,  
sbbkly, f xln, f grn, frm, mas, dull,  
v sli calc, sli arg, no vis por,  
ooids/pel ip, Cht ip, rr Glau frag,  
no o stn, NFSOC

CG 61u



DOL: GnGry-BrnGry-offWh, sbbly, hd, mas, dull, mod- sli calc, sli arg, no vis por, no o str, NFSOC

CHT: offWh-ltGry-transl, blk, v hd, cln, NFSOC

CHT: paBrn, paYelBrn-Wh mot, blk, frm-v hd, mod Dol incl, sli arg, NFSOC

**KINDERHOOK LS/SH 5576' MD (-3455' SS)**

CHT: paBrn, paYelBrn-Wh mot, blk, frm-sft, trip, abnt mod Dol incl, sli arg, NFSOC

DOL: mltGry-mGry-vltGry, blk-sbbly, v sli arg, sli vis por, abnt uvf Cht gr thru, NFSOC; CHT: mGry, blk, frm-sft, trip, abnt mod Dol incl, sli arg, NFSOC

DOL: mdkGy, blk, frm-sli hd, crypt xln, arg ip, lmy ip, ooids/ pel thru, tr Glau, no vis por, no o str, NFSOC

LS: GryORngPnk-offWh, sbbly, crypt, micro xln, sft, no vis por, no o str, tr GryGn Cht, NFSOC

MW 10.1/VIS 43

CG 55u

53u

MUD @ 5540'

- WT 9.1
- VIS 43
- PV 16
- YP 9
- GELS 3/7
- Fil 3.6
- CK 1
- SOL 6.0
- O/W /94.0
- pH 8.5
- Fil Alk 0.05/1
- CI 5600
- TH 160

TG (Units)	200
C1 (units)	200
C2 (units)	200
C3 (units)	200
IC4 (units)	200
NCS5 (units)	200

CG 45u

CG 21u

**VIOLA LS/DOL**  
5687' MD (-3566' SS)

CHT: Wh-vltGry-ltGry, sbbkly, vh,  
conch frac ip, tr repl PYR,,NFSOC;  
SH: GryBlk, plty, w ind, NFSOC

DOL: offwh-ltGry, blk-sbbkly, sli  
stf, chky-f xln, mod calc ip, abnt  
ooids/pel ip, NFSOC

SH: GryBlk, plty, frm-fri, n calc,  
sbwxy, tr embd ehud f xln Dol,  
NFSOC; SS: mGry, lvf-uvfgr, ang,  
w srt, w cmt, dol cmt, sli vis por,  
NFSOC

LS: paYelBrn-mGry, sbbkly, frm,  
crypt microxln-sucr, abnt  
ooids/pel, NFSOC; SH: Blk-paBrn,  
plty, frm-fri, n calc, sbwxy, tr embd  
ehud f xln Dol, NFSOC

**SIMPSON GRP**  
5791 MD (-3670' SS)

LS: paYelBrn-mGry, sbbkly, frm,  
crypt microxln-sucr, abnt  
ooids/pel, mod ehud f xln Dol  
incl, NFSOC

LS: paBrn-paYelBrn, sbbkly,  
frm-hd, uvfgr, crypto xln, mod dol,  
NFSOC

DOL: offWh-PaBrn, opa, q,  
sbhed-ehud, f xln, lmy cmt, fnt o  
stn ip, NFSOC

SH: dkGry-BrGry-GryBlk, blk-  
pltv. hd. v sli-mod calc. sbrthv.

CONN

CONN

CONN

CONN

CONN

CONN

CONN

**NOTE: ROP  
SCALE CHANGE  
0-5 min/ft**

Scale Change  
ROP (min/ft)  
Gamma (API)

CG 20u

CG 20u

24u

CG 24u

CG 35u

CG 14u

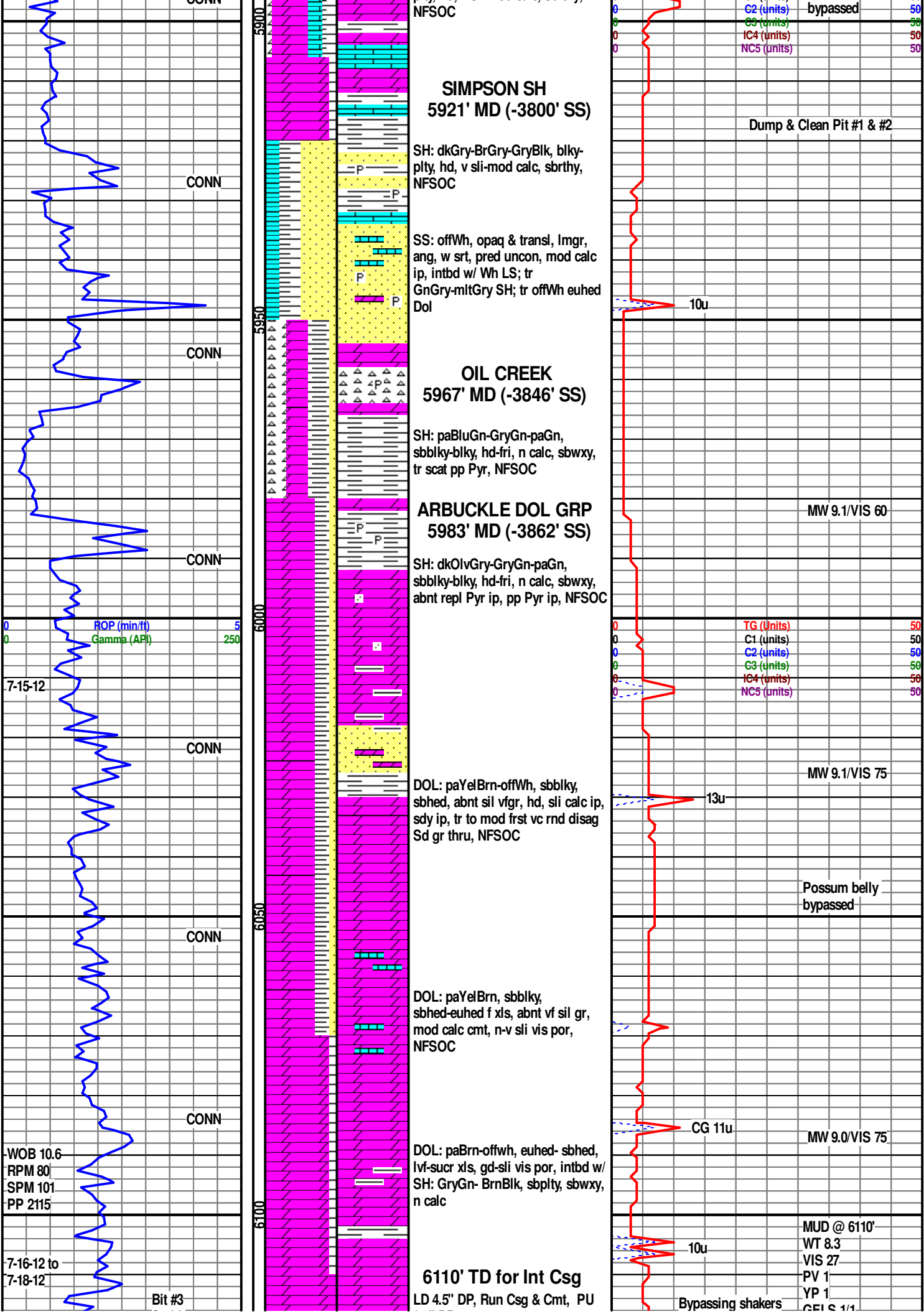
TG (Units)	200
C1 (units)	200
C2 (units)	200
C3 (units)	200
IC4 (units)	200
NC5 (units)	200

Possum belly  
bypassed

MW 9.0/VIS 48/LCM 6#

**NOTE: TG SCALE  
CHANGE 0-50u**

Scale Change  
TG (Units)  
C1 (units) Possum belly





WOB 24  
RPM 92  
SPM 82  
PP 2670

CONN

DOL: offWh, euhed-sbhed, lvf-uf  
xln, v sli calc, sbvit-vit, disag, no  
vis por, no o stn; CHT: Wh, sbblky,  
vf xln, disag, hd

Bypassing shakers

CONN

DOL: offWh-offwh, euhed-sbhed,  
lvf xln, v sli calc, vit, disag, no vis  
por, no o stn; CHT: Wh, sbblky, vf  
xln, disag, hd

Pump Sweep

ROP (min/ft) 5  
Gamma (API) 250

12u Dump & Clean Pit #3

0	TG (Units)	50
0	C1 (units)	50
0	C2 (units)	50
0	C3 (units)	50
0	IC4 (units)	50
0	NC5 (units)	50

CONN

DOL: offWh-offwh, euhed-sbhed,  
uvf-lf xln, sli-n calc, vit, disag, no  
vis por, no o stn

WOB 24.1  
RPM 93  
SPM 84  
PP 2680

Bypassing shakers

CONN

DOL: offWh-offwh-transp,  
sbhed-euhed, uvf-lf xln, sli-n calc,  
vit, disag, no vis por, no o stn, tr  
Wh Cht

WOB 24.1  
RPM 102  
SPM 85  
PP 2745

CONN

DOL: offWh-offwh-transp,  
euhed-sbhed, m-c xln, sli-n calc,  
sbvit-vit, disag, no vis por, no o  
stn

MUD @ 6513'  
WT 8.3  
VIS 27  
PV 1  
YP 1  
GELS 1/1  
Fil 60.0  
CK 1  
SOL 0.0  
O/W /100  
pH 11.0  
Fil Alk 0.08/1.2  
CI 600  
TH 120

DOL: offWh, euhed-sbhed, lvf-uvf  
xln, vit, disag, no vis por, no o stn;  
CHT: Wh, sbblky, f xln, hd

6513' Rig Repair

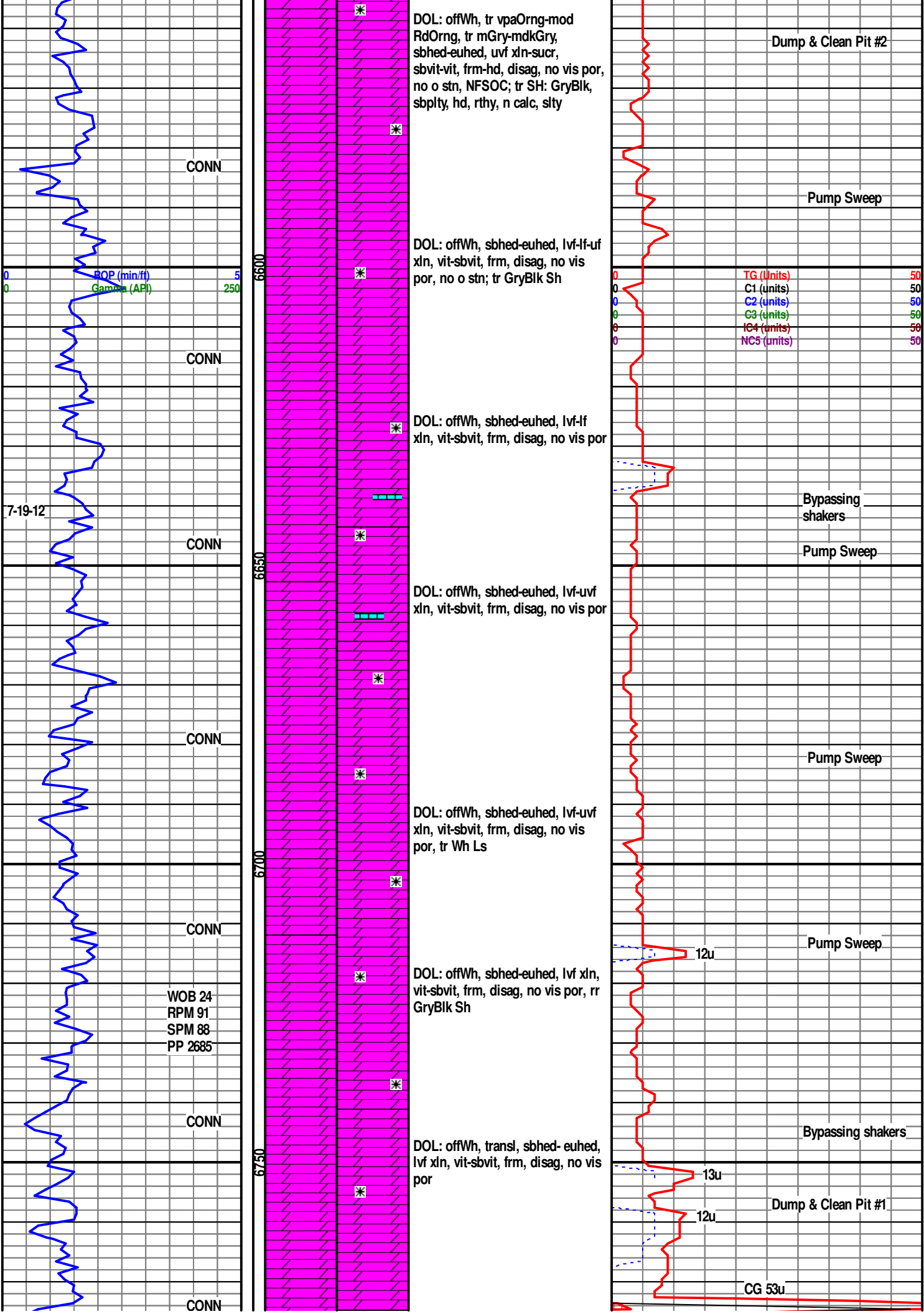
Pump Sweep

CONN

DOL: offWh, tr vpaOrng-mod  
RdOrng sbhed-euhed, uvf xln,  
sbvit-vit, disag, no vis por, no o  
stn, NFSOC

12u Bypassing shakers

CONN



**NOTE: ROP SCALE  
CHANGE 0-10u**

Scale Change  
ROP (min/f) 10  
Gamma (API) 250

CONN

CONN

CONN

CONN

CONN

CONN

Bit #4  
JZ 6.125"  
HF43-SBH  
3x10  
in @ 6853'

WOB 16.5  
RPM 92  
SPM 81  
PP 2900

DOL: offWh, transl, sbhed- euhed,  
lf-uvf xln, vit-sbvit, frm, disag, no  
vis por

DOL: offWh, transl, sbhed- euhed,  
lf-uvf xln, vit-sbvit, frm, disag, no  
vis por

DOL: offWh, transl, euhed- sbhed,  
micro-lvf xln, vit-sbvit, frm, disag,  
no vis por

**6858' TOOH for Bit #4**

DOL: offWh, transl, euhed- sbhed,  
micro-lvf xln, vit-sbvit, frm, disag,  
no vis por

**6904' No Returns**

No returns - Assumed lithology  
f/6904' t/TD

Pump Sweep

**NOTE: TG SCALE  
CHANGE 0-100u**

Scale Change  
TG (Units) 100  
C1 (units) 100  
C2 (units) 100  
C3 (units) 100  
IC4 (units) 100  
NC5 (units) 100

15u

Bypassing shakers

MUD @ 6858'  
WT 8.3  
VIS 27  
PV 1  
YP 1  
GELS 1/1  
Fil 60.0  
CK 1  
SOL 0.0  
O/W /100  
pH 9.5  
Fil Alk 0.04/1  
CI 2000  
TH 120

75u

