



DIGITAL LOG (785) 625-3858

Dual Induction Log

15-055-22,162-00-00

API No.

Company Lebsack Oil Production, Inc.

Well Barlow No.2

Field West ext. Damme

County Finney State Kansas

Location

NE SE SE
1000' FSL & 335' FEL

Sec: 13 Twp: 22S Rge: 34W

Other Services
CNL/CDL
MEL

Elevation

K.B. 2920
D.F.
G.L. 2909

Permanent Datum Ground Level Elevation 2909
Log Measured From Kelly Bushing 11 Ft. Above Perm. Datum
Drilling Measured From Kelly Bushing

Date 7/14/2012

Run Number One

Depth Driller 4850

Depth Logger 4845

Bottom Logged Interval 4844

Top Log Interval 400

Casing Driller 8.625 @ 411

Casing Logger 418

Bit Size 7.875

Type Fluid in Hole Chemical

Salinity,ppm CL 3,200

Density / Viscosity 9.3 49

pH / Fluid Loss 10.5 6.4

Source of Sample Flowline

Rm @ Meas. Temp .8 @ 82

Rmf @ Meas. Temp .6 @ 82

Rmc @ Meas. Temp 1.08 @ 82

Source of Rmf / Rmc Charts

Rm @ BHT .53 @ 124

Operating Rig Time 4 Hours

Max Rec. Temp. F 124

Equipment Number 17

Location Hays

Recorded By C. Desaire

Witnessed By Wayne Lebsack

<<< Fold Here >>>

All interpretations are opinions based on inferences from electrical or other measurements and we cannot and do not guarantee the accuracy or correctness of any interpretation, and we shall not, except in the case of gross or willful negligence on our part, be liable or responsible for any loss, costs, damages, or expenses incurred or sustained by anyone resulting from any interpretation made by any of our officers, agents or employees. These interpretations are also subject to our general terms and conditions set out in our current Price Schedule.

Comments

Thank you for using Log-Tech, Inc.
(785) 625-3858

Scott City KS,
S to Co. Ln., 4 W, 9 S,
1 W, 1/2 N, W Into

Database File: c:\warrior\data\lebsack_barlow no.2\lebsackhd.db
Dataset Pathname: dil/lebstk
Presentation Format: dil2in
Dataset Creation: Sat Jul 14 17:09:48 2012
Charted by: Depth in Feet scaled 1:600

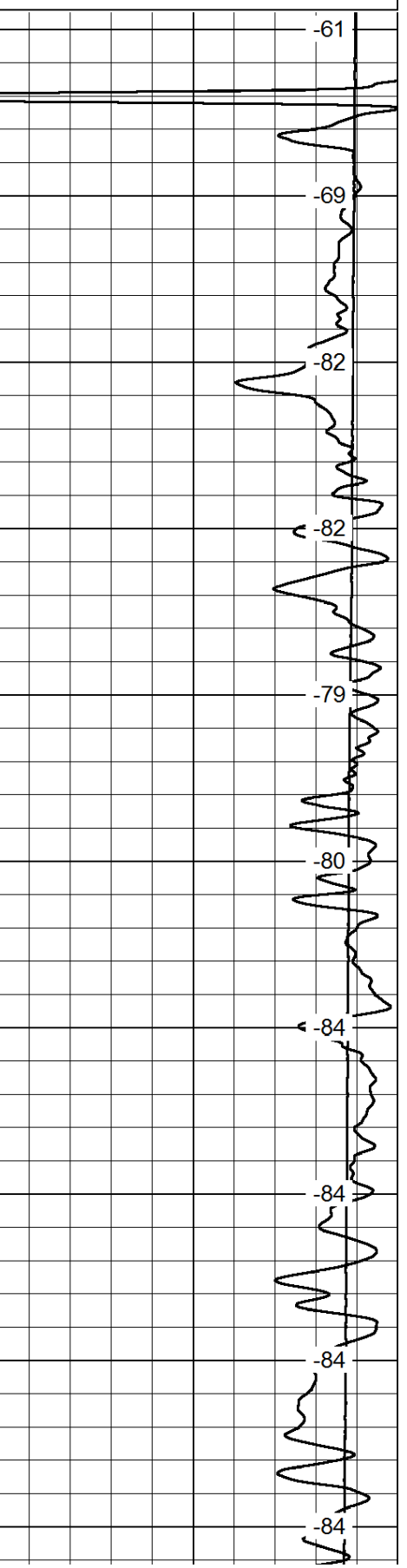
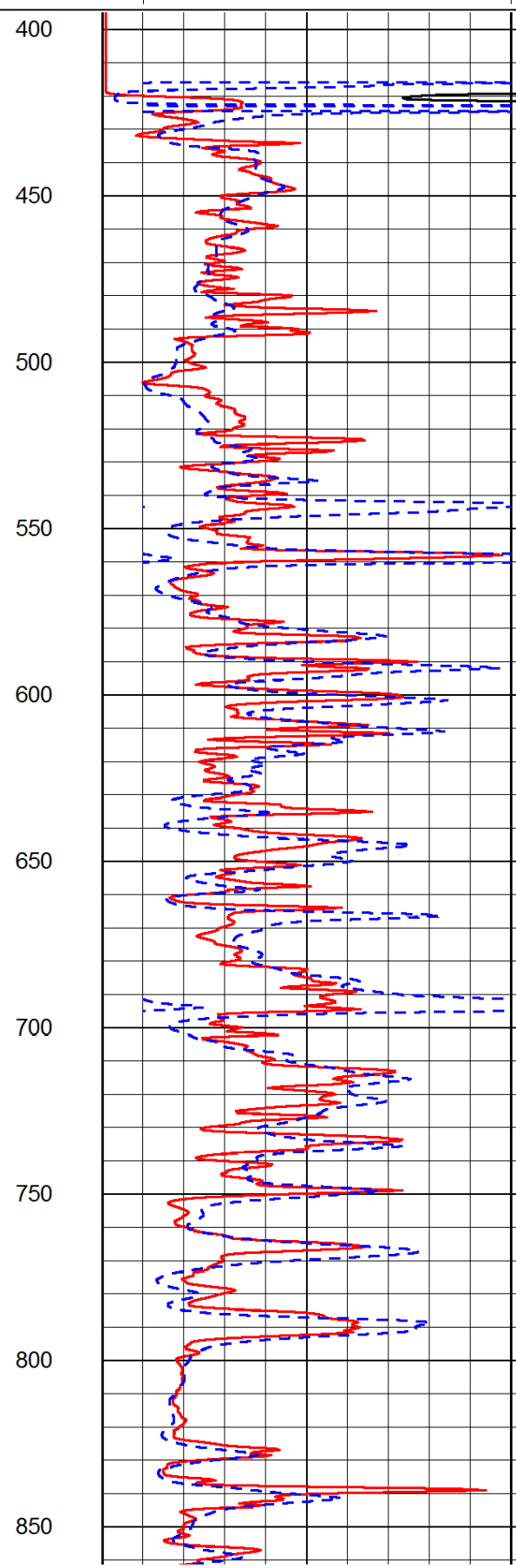
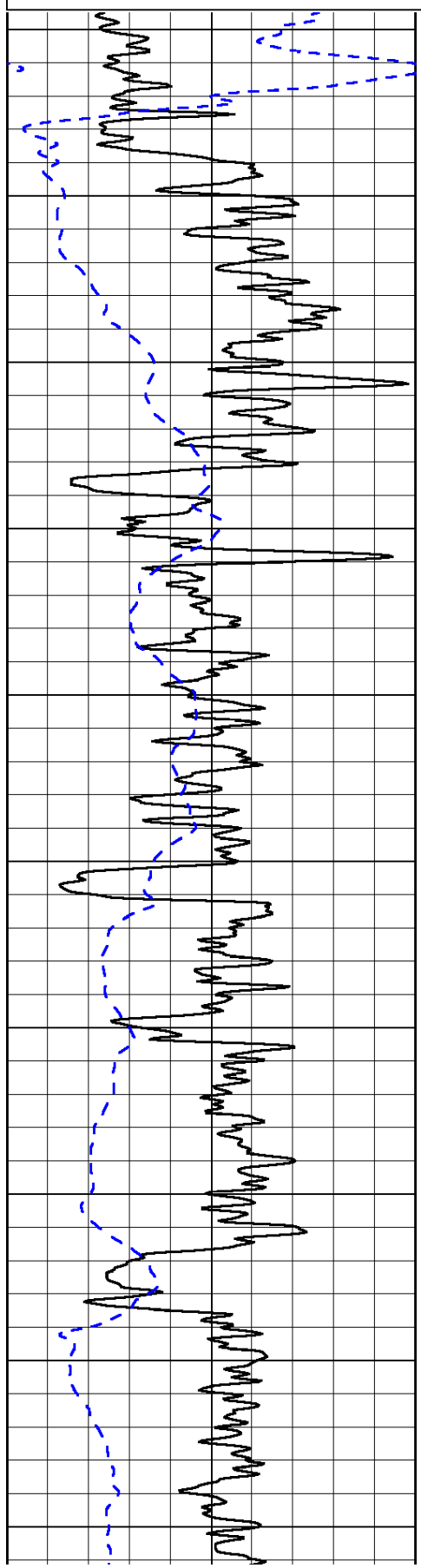
0	Gamma Ray	150
-200	SP (mV)	0

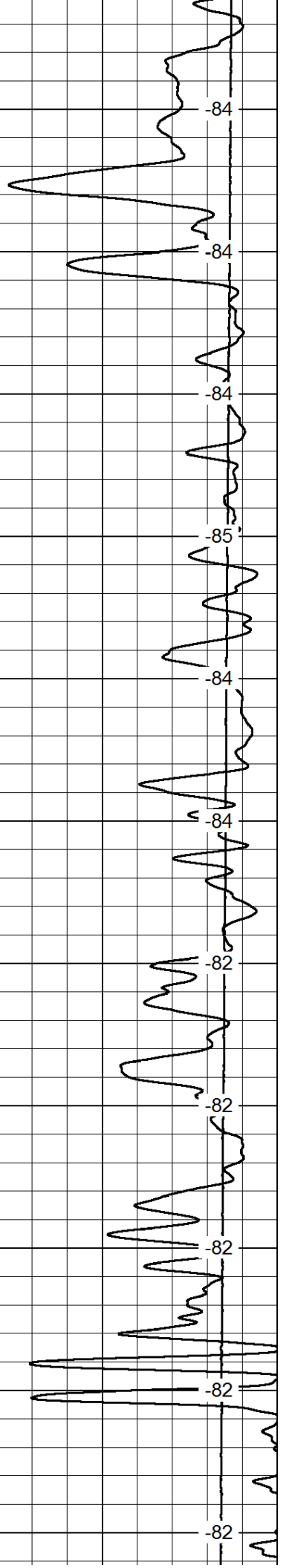
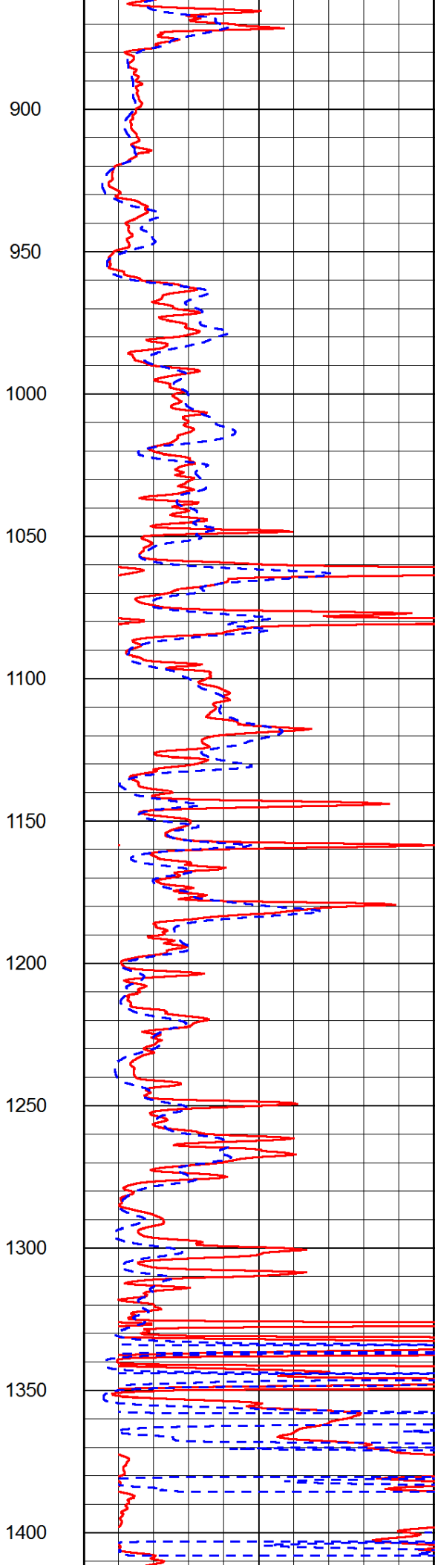
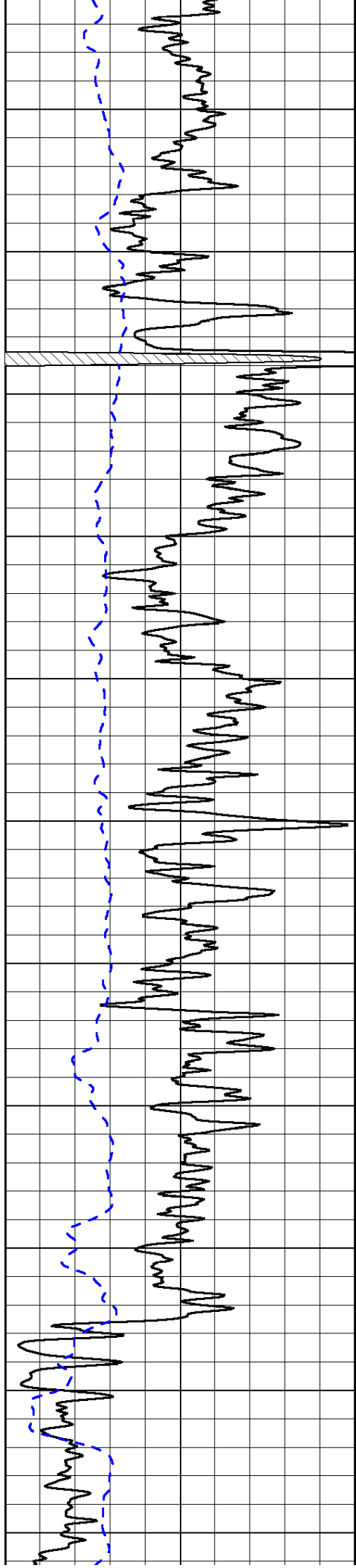
0	Shallow Resistivity	50
0	Deep Resistivity	50

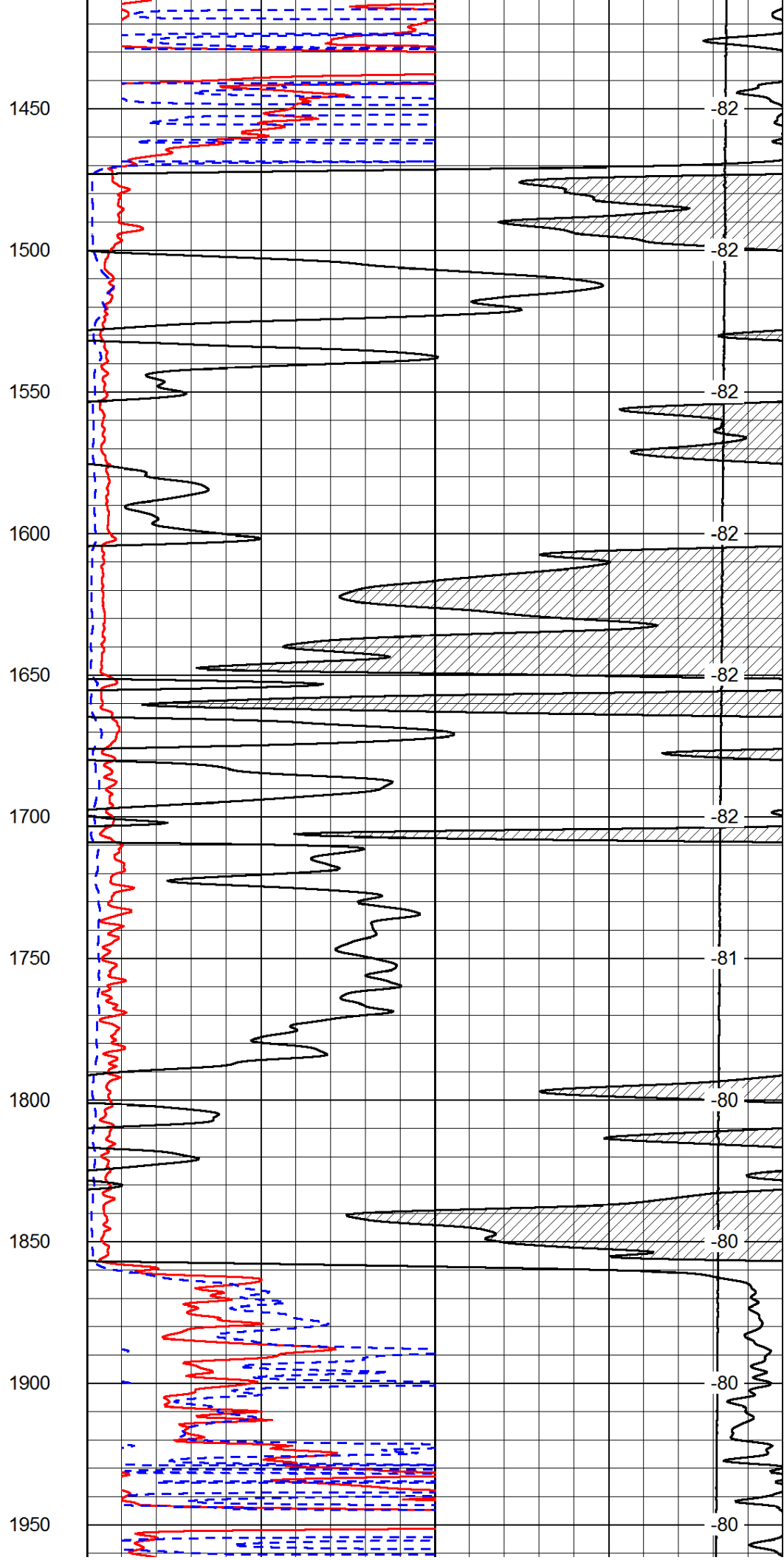
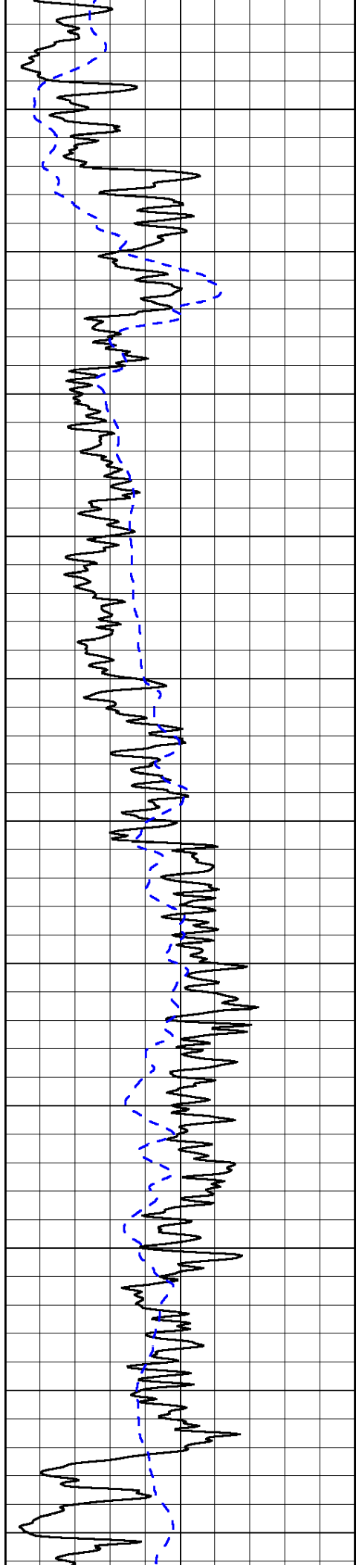
LSPD

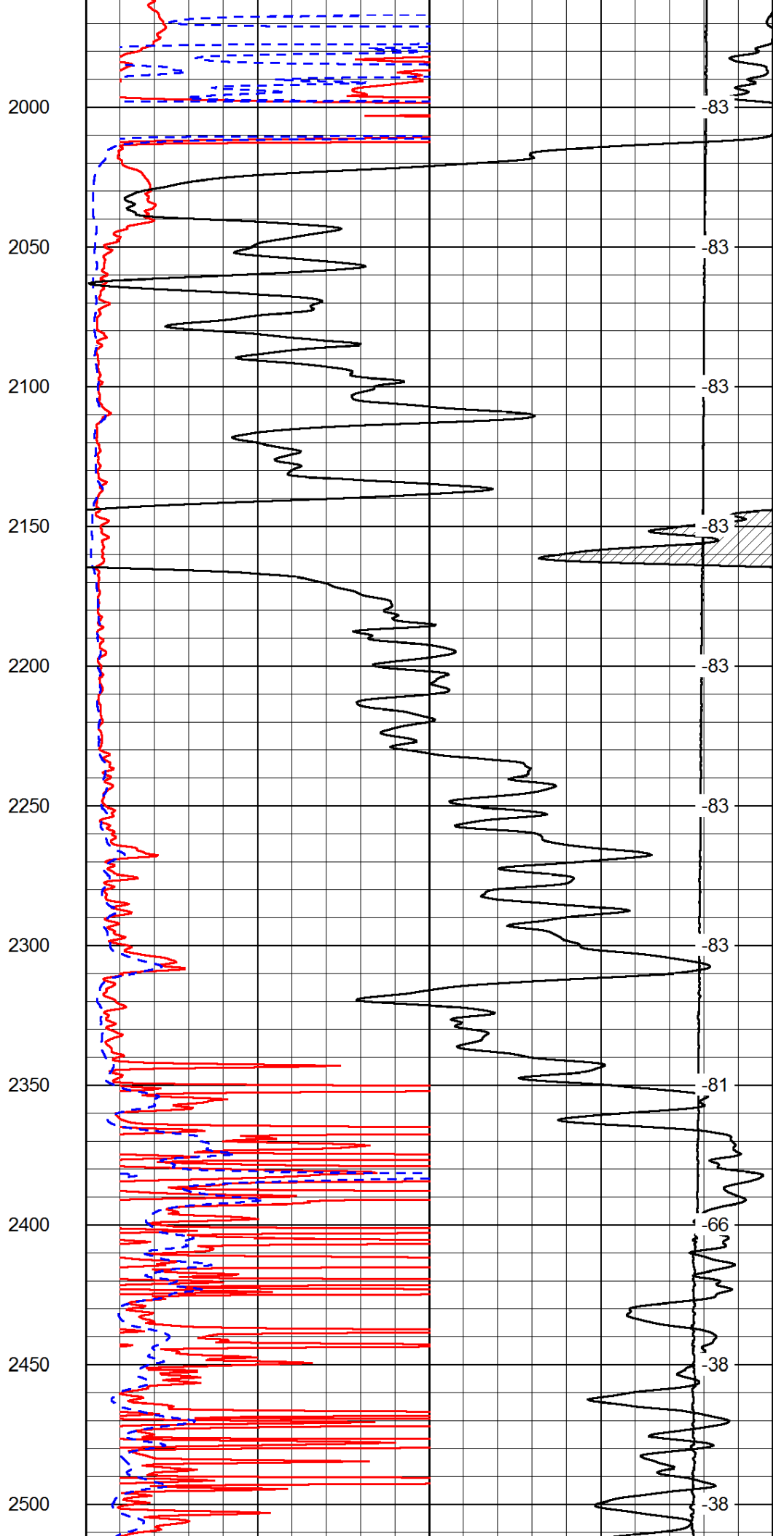
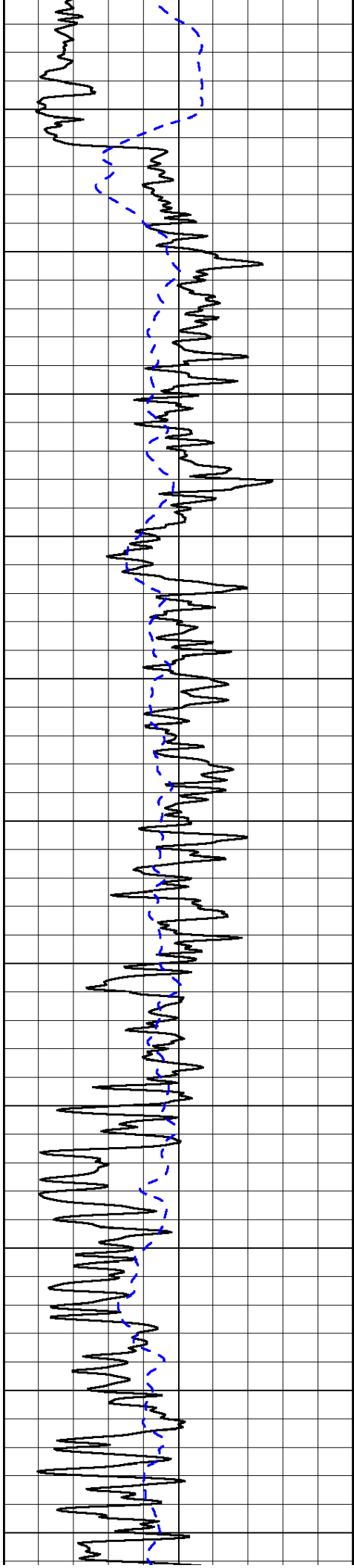
1000	Conductivity	0
15000	Line Tension	0

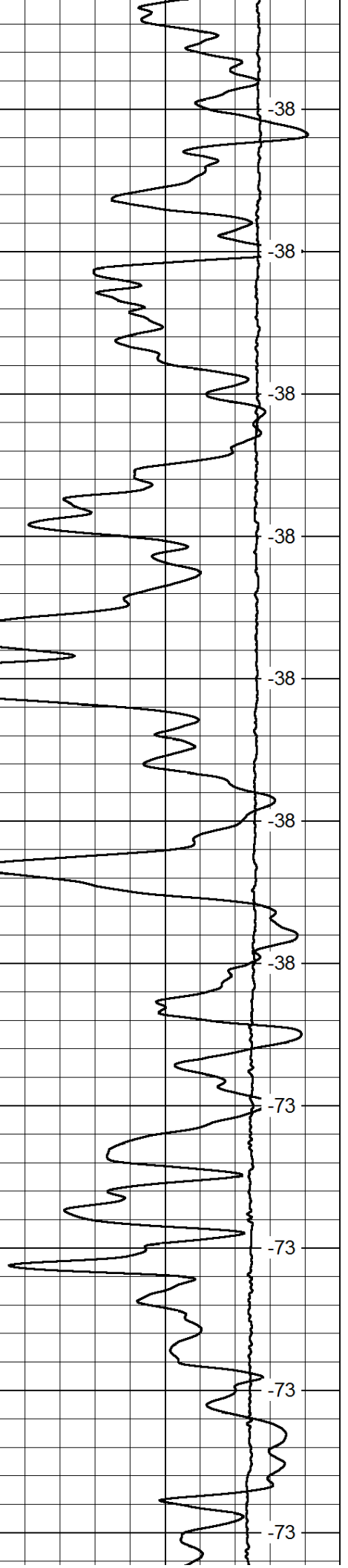
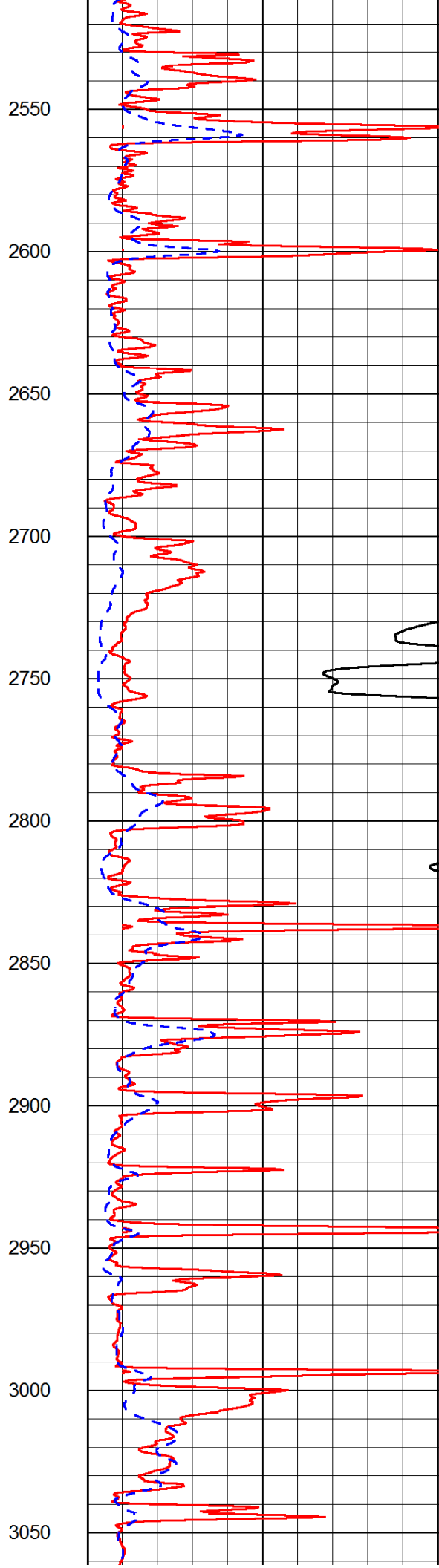
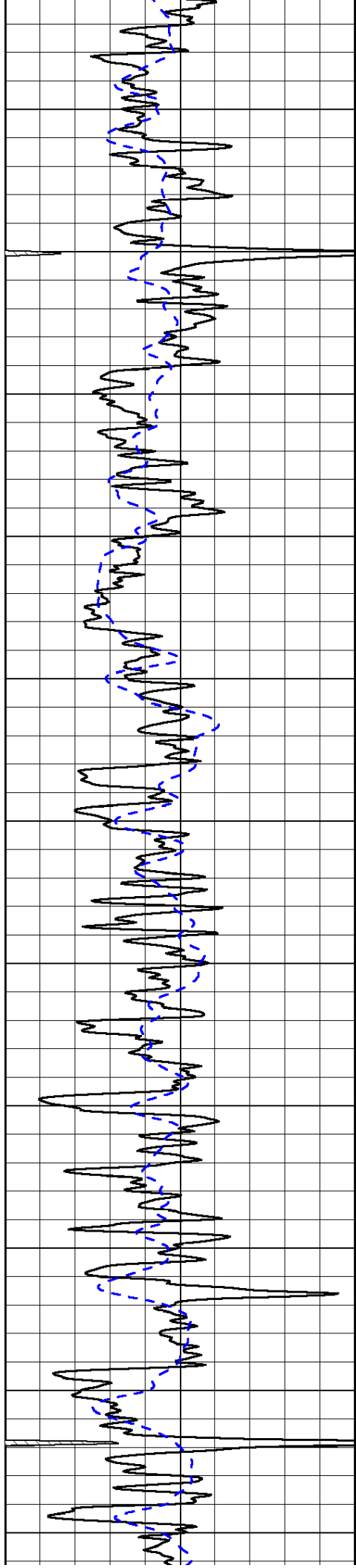
50	Shallow Resistivity	500
50	Deep Resistivity	500

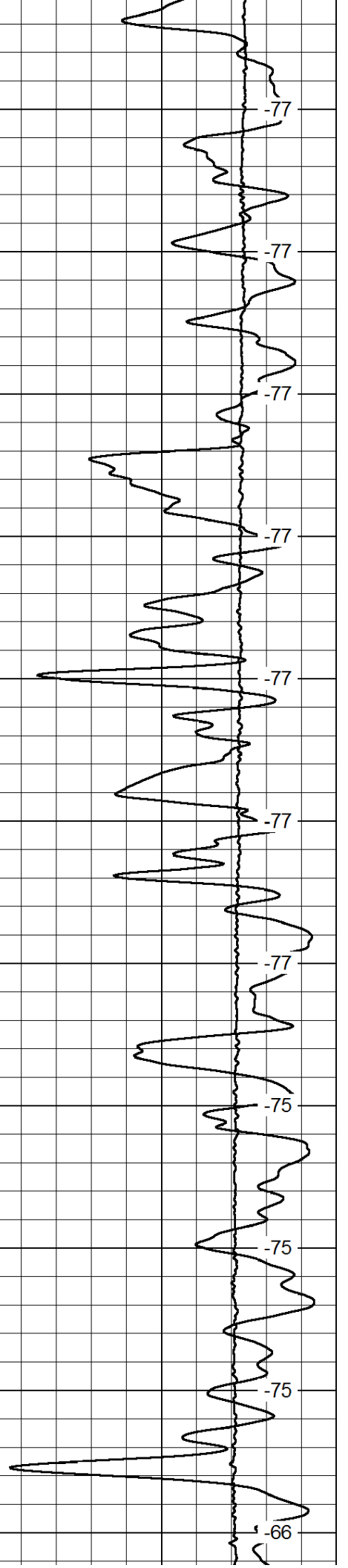
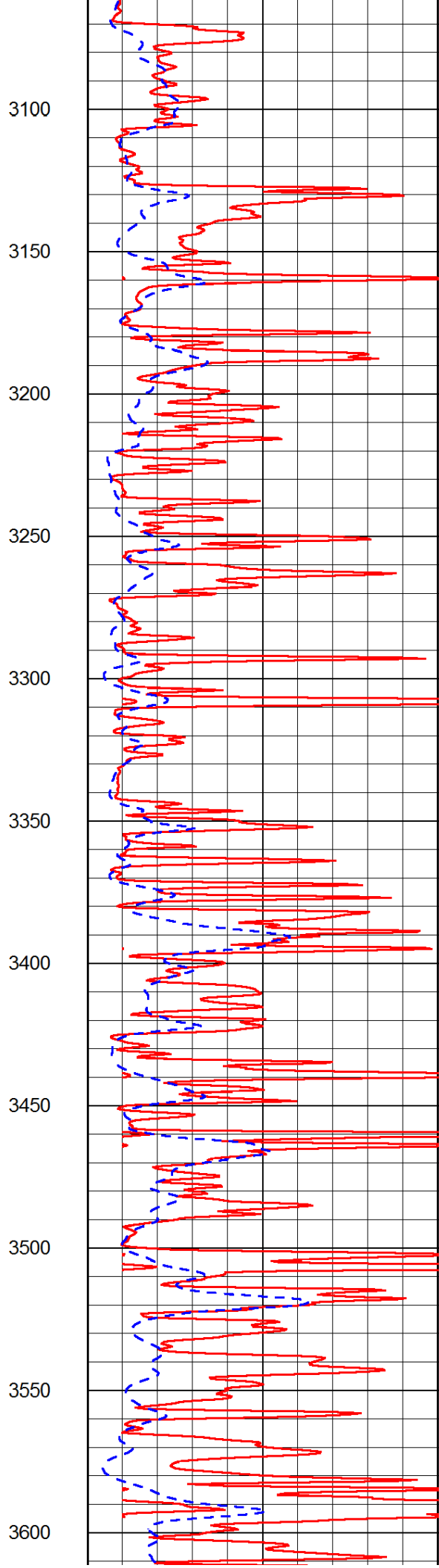
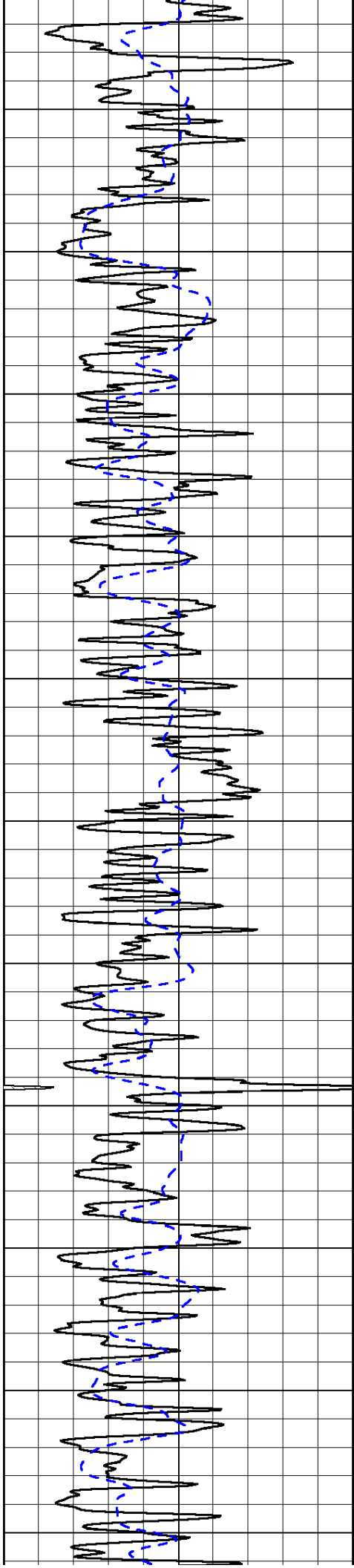


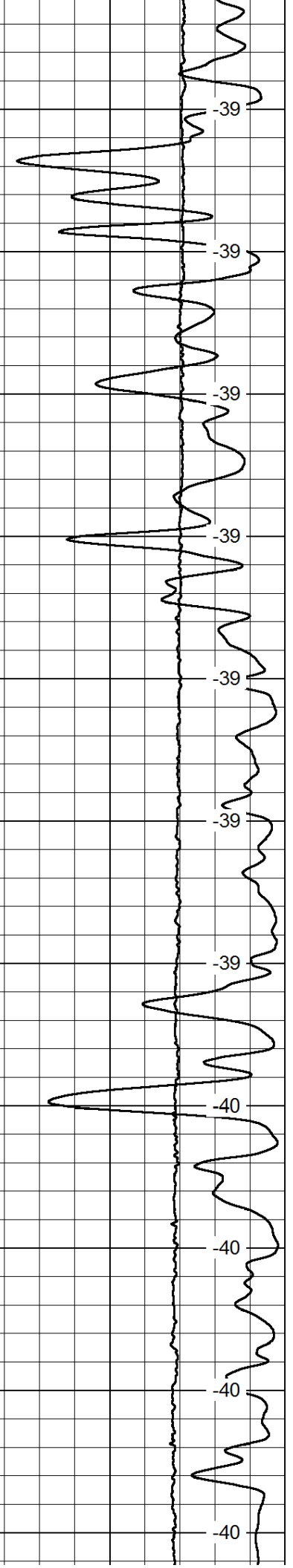
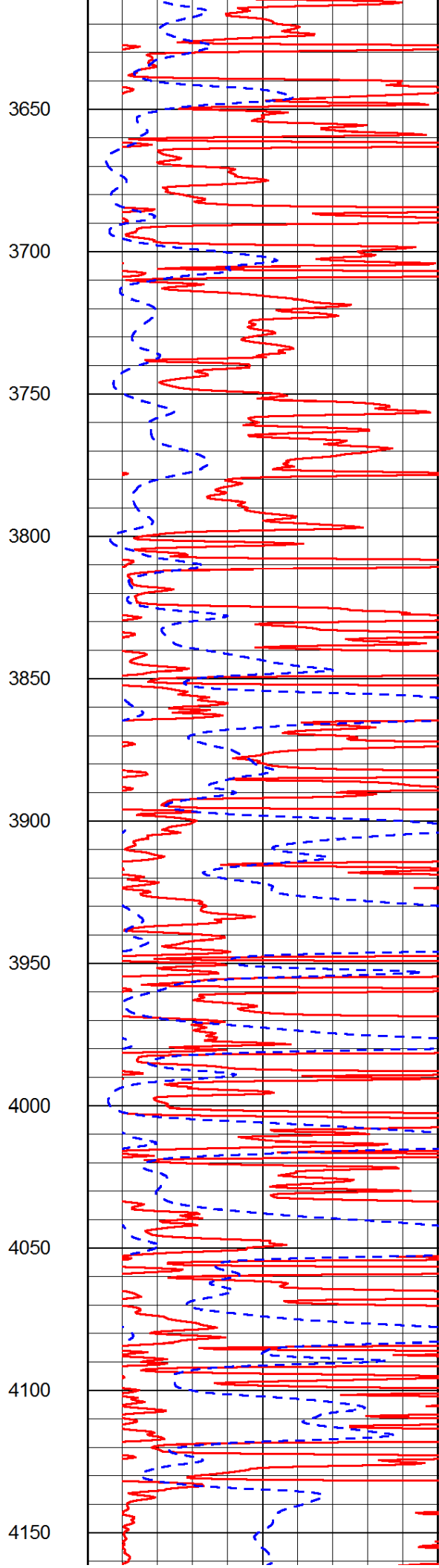
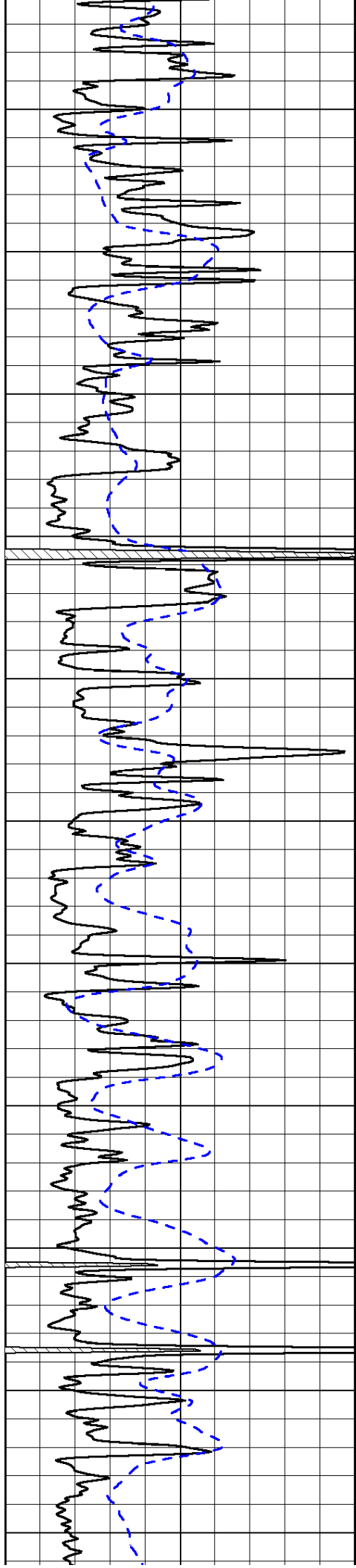


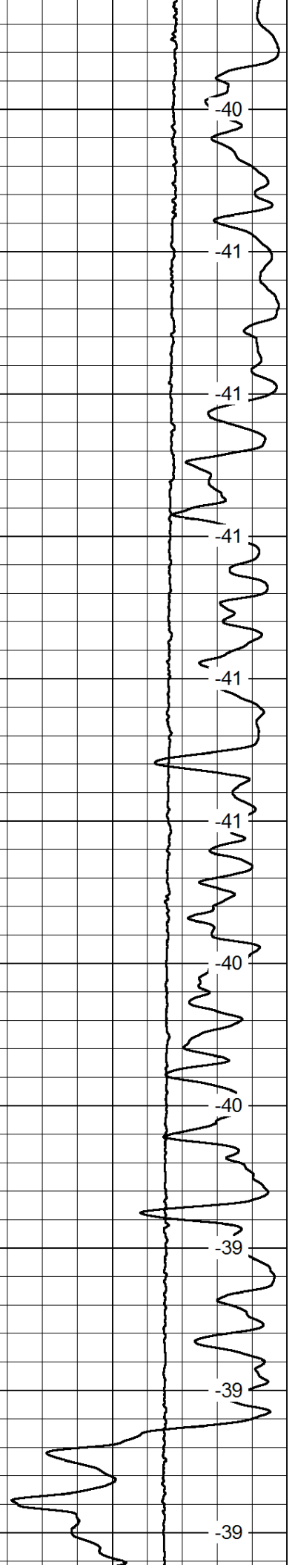
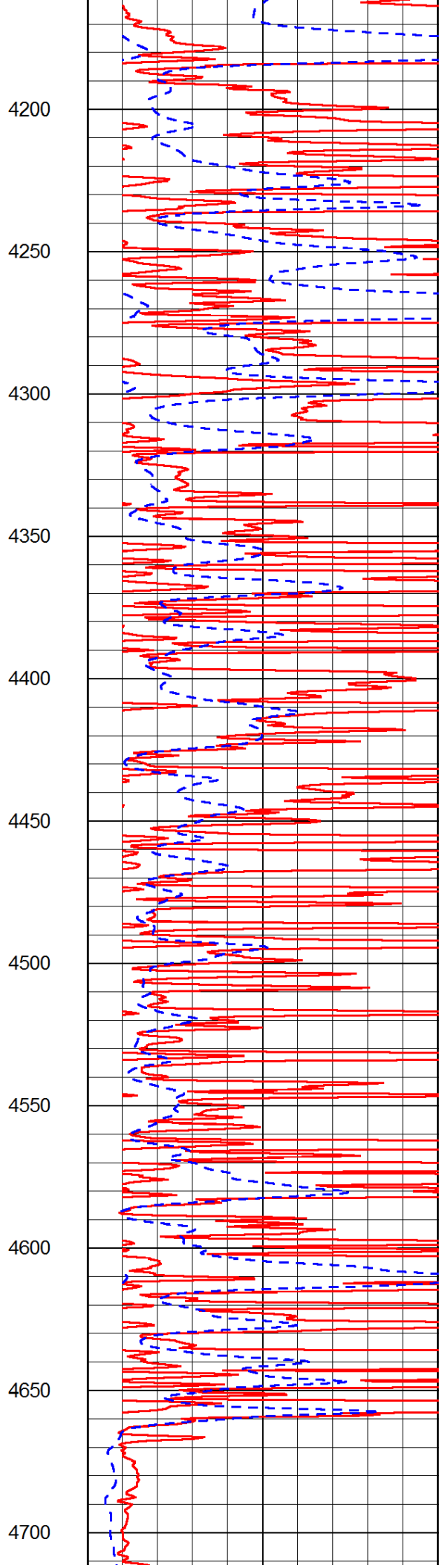
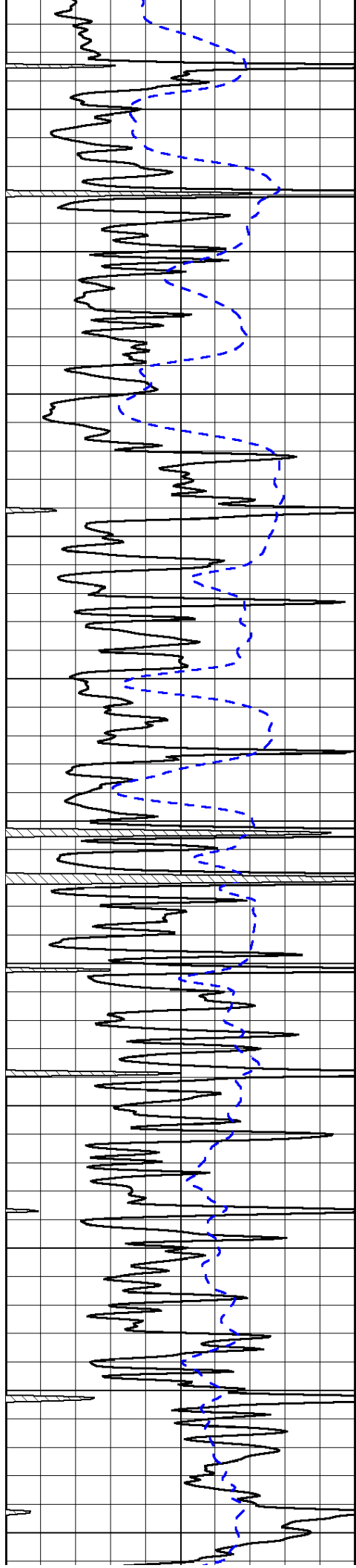


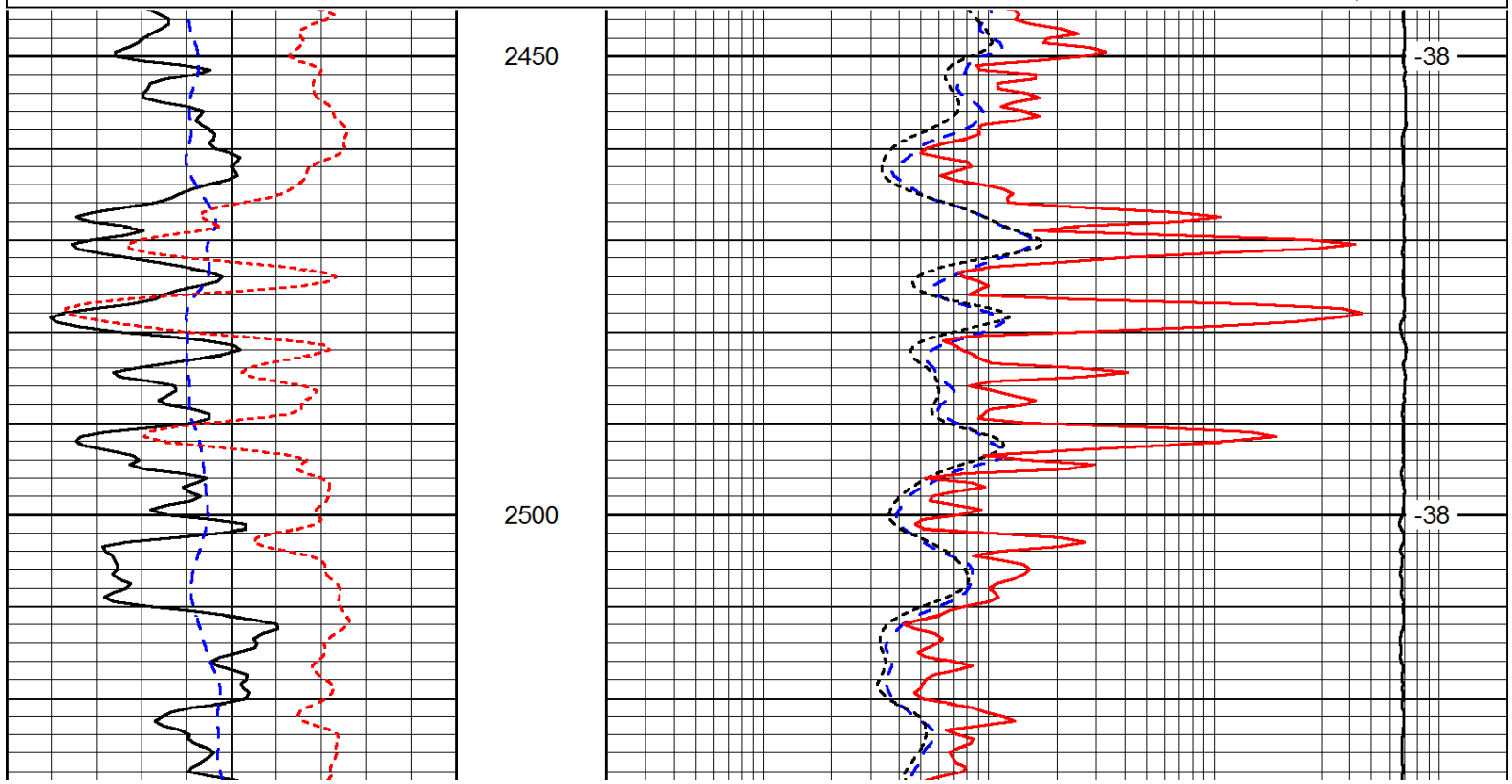
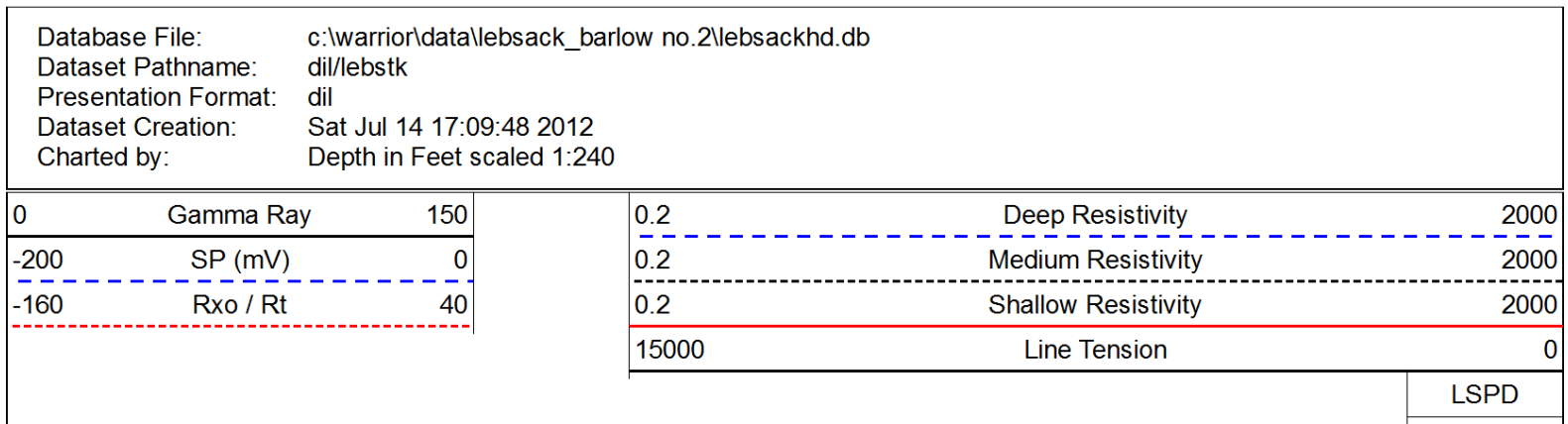
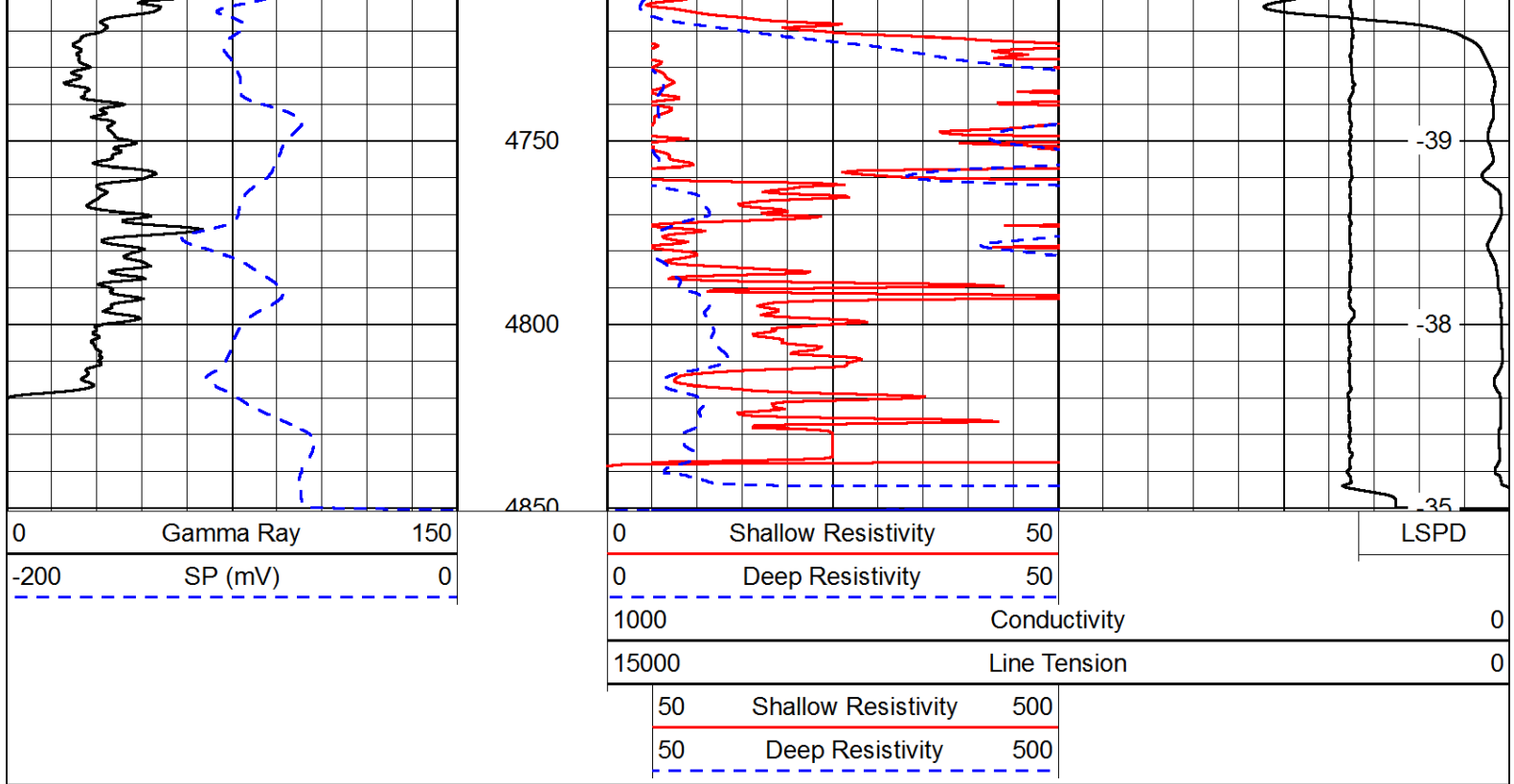


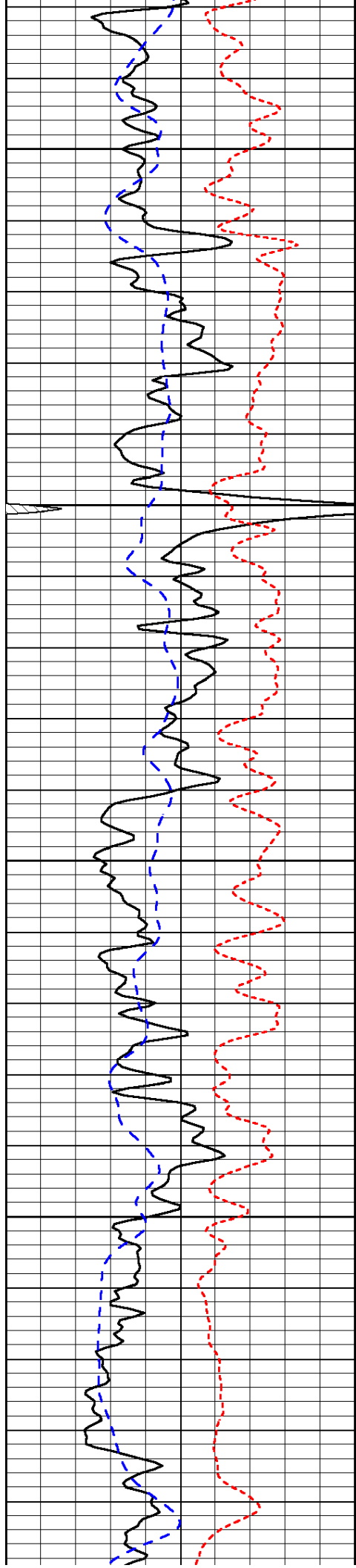










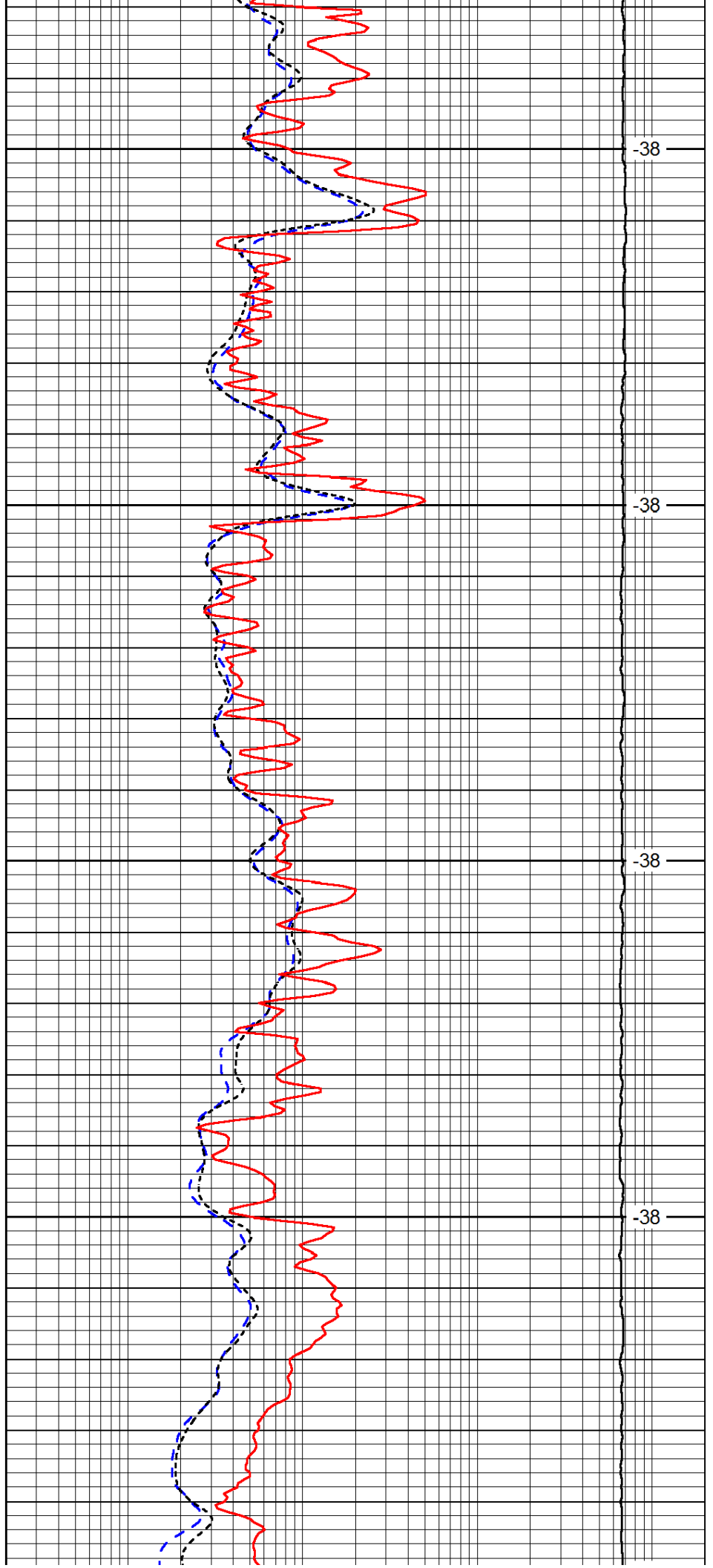


2550

2600

2650

2700

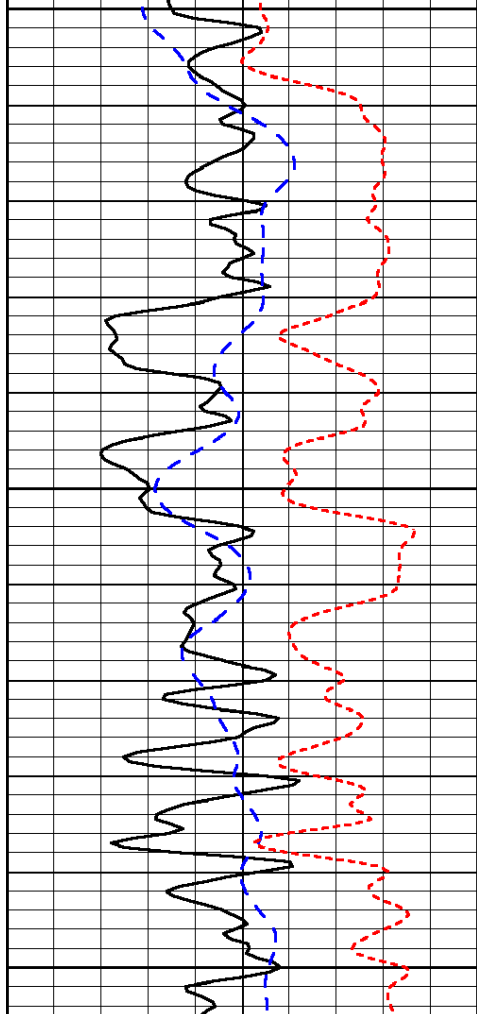


-38

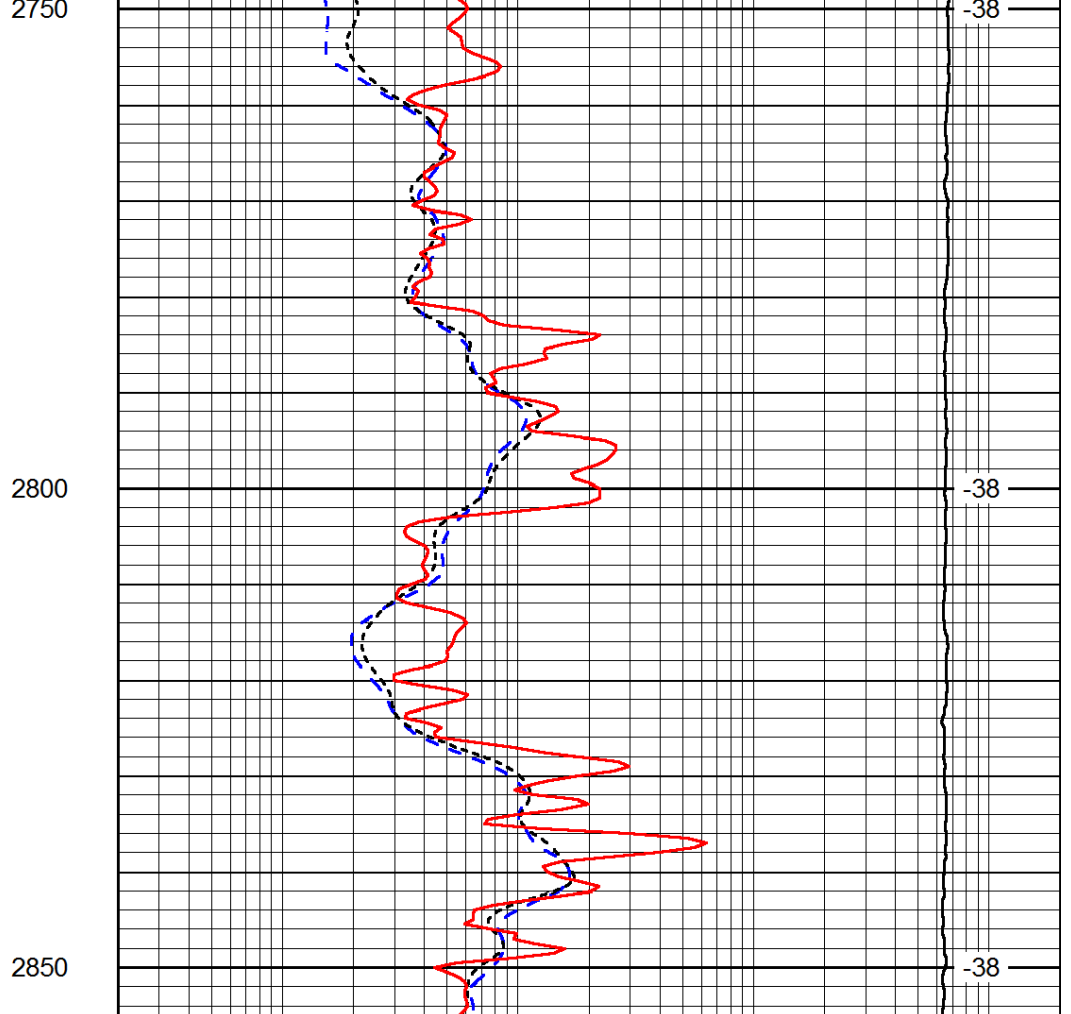
-38

-38

-38



0	Gamma Ray	150
-200	SP (mV)	0
-160	Rxo / Rt	40



0.2	Deep Resistivity	2000
0.2	Medium Resistivity	2000
0.2	Shallow Resistivity	2000
15000	Line Tension	0

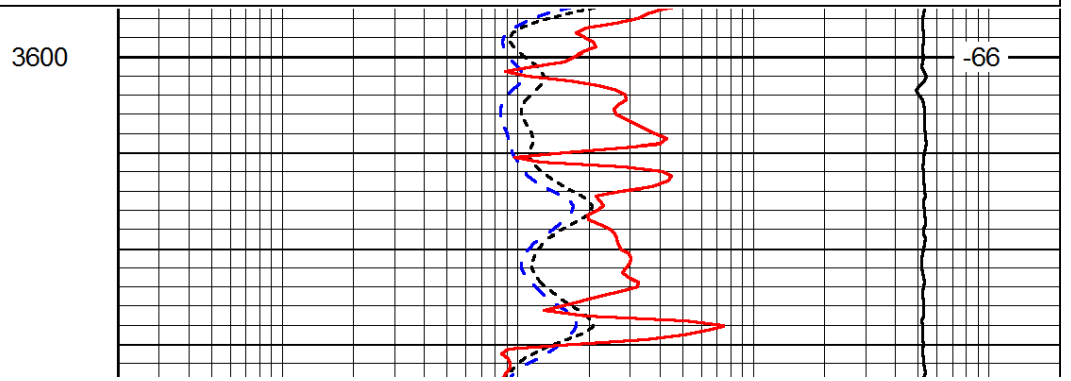
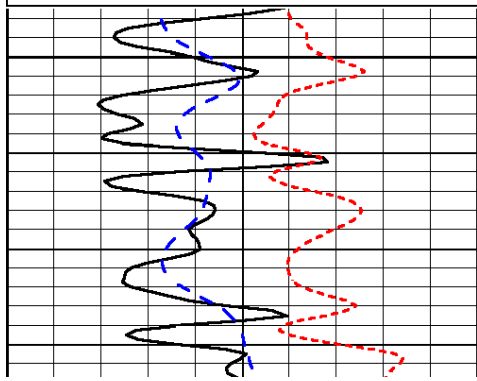
LSPD

Database File: c:\warrior\data\lebsack_barlow no.2\lebsackhd.db
 Dataset Pathname: dil/lebstk
 Presentation Format: dil
 Dataset Creation: Sat Jul 14 17:09:48 2012
 Charted by: Depth in Feet scaled 1:240

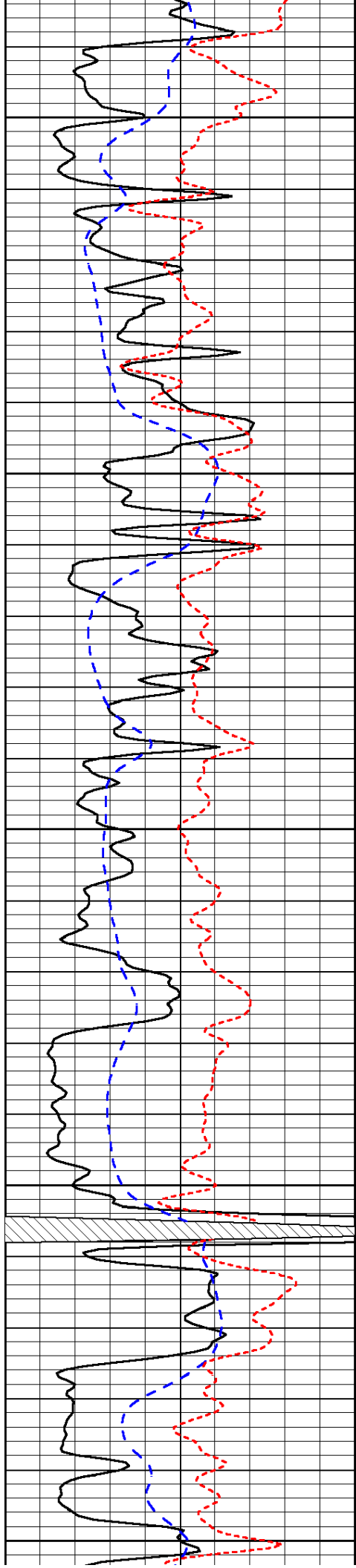
0	Gamma Ray	150
-200	SP (mV)	0
-160	Rxo / Rt	40

0.2	Deep Resistivity	2000
0.2	Medium Resistivity	2000
0.2	Shallow Resistivity	2000
15000	Line Tension	0

LSPD



-66



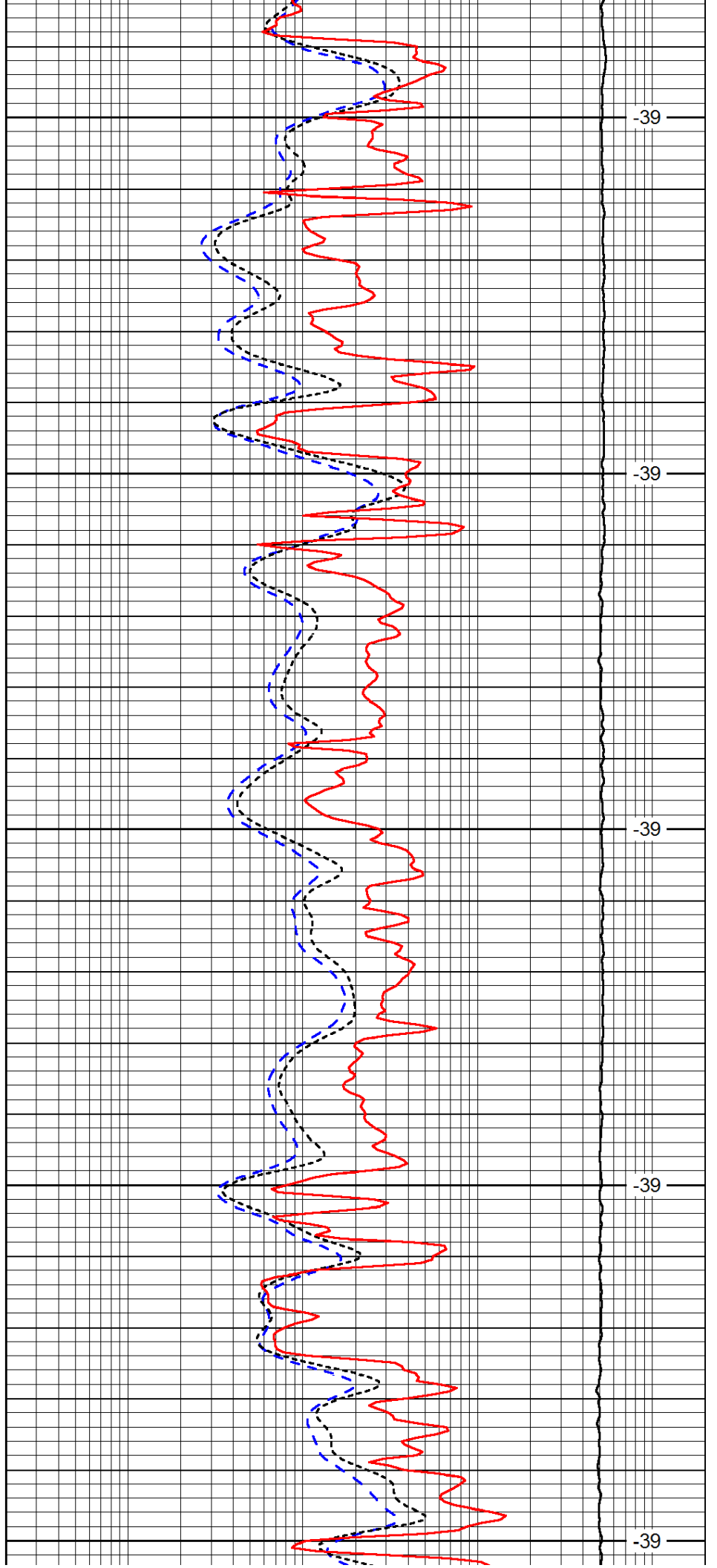
3650

3700

3750

3800

3850



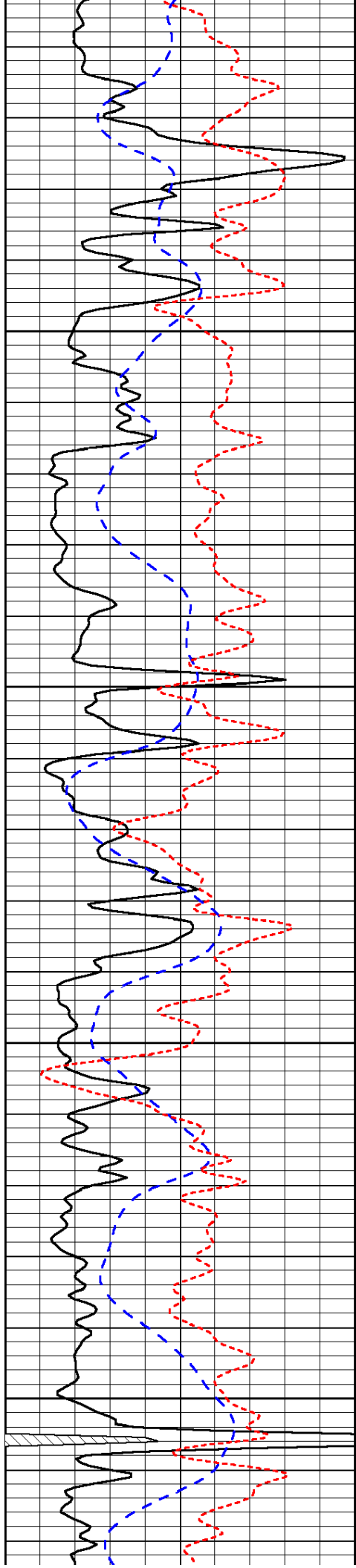
-39

-39

-39

-39

-39

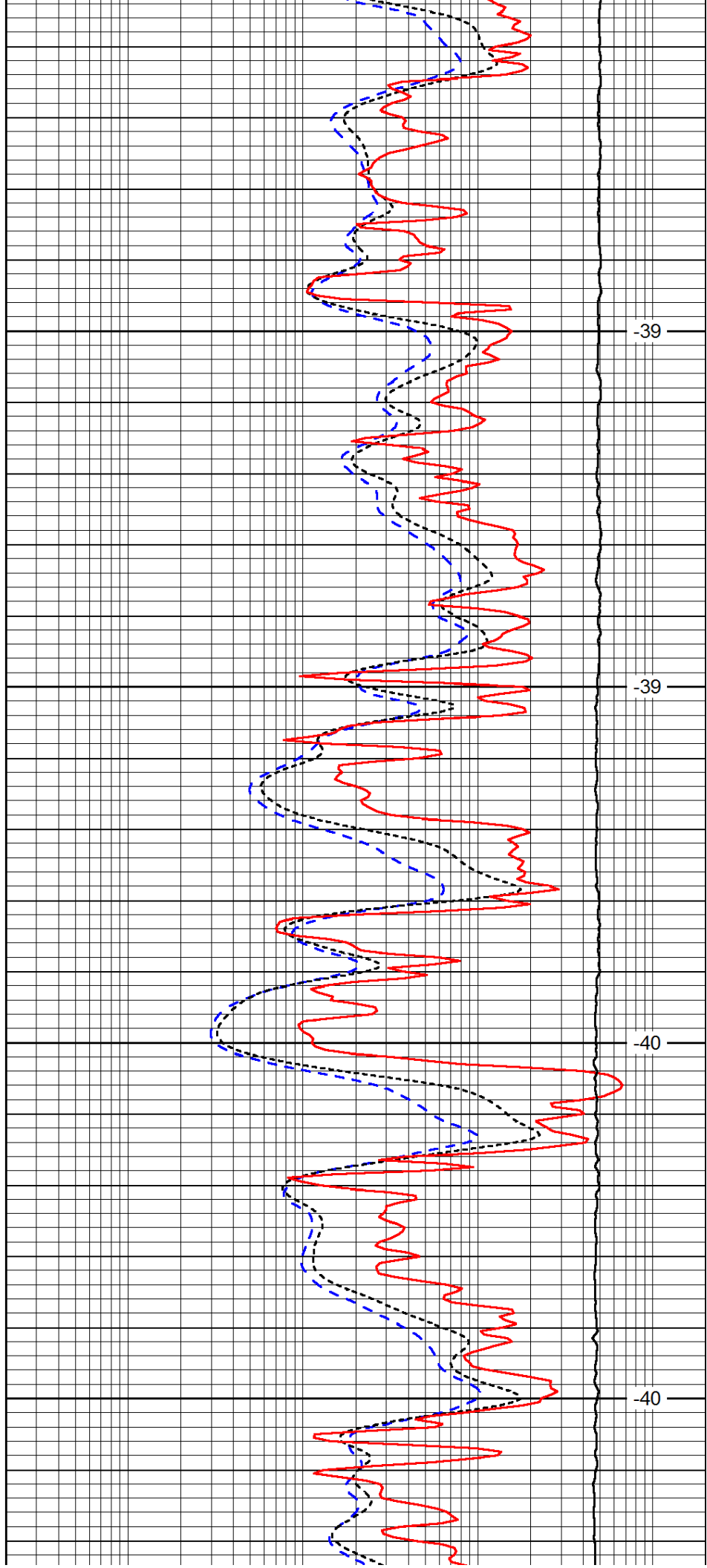


3900

3950

4000

4050

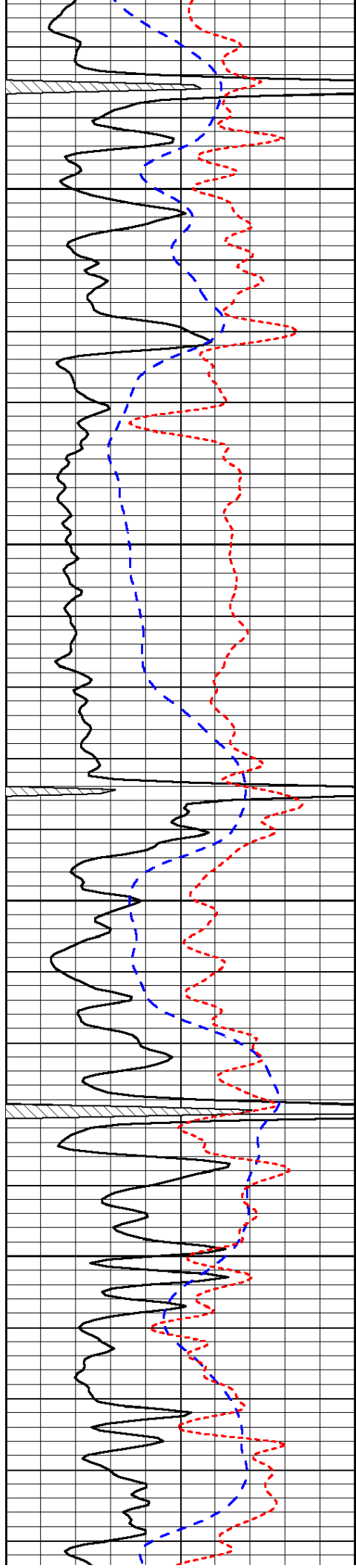


-39

-39

-40

-40

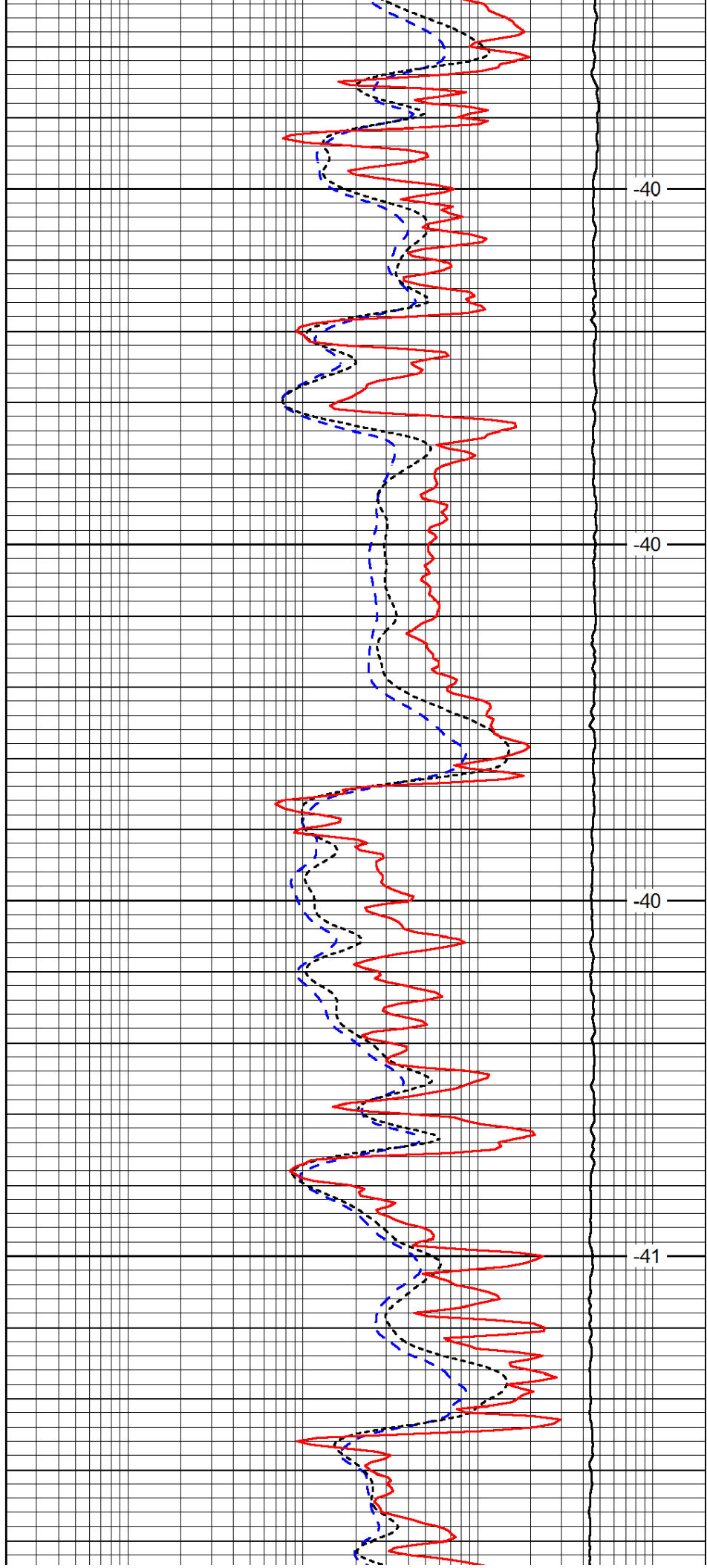


4100

4150

4200

4250

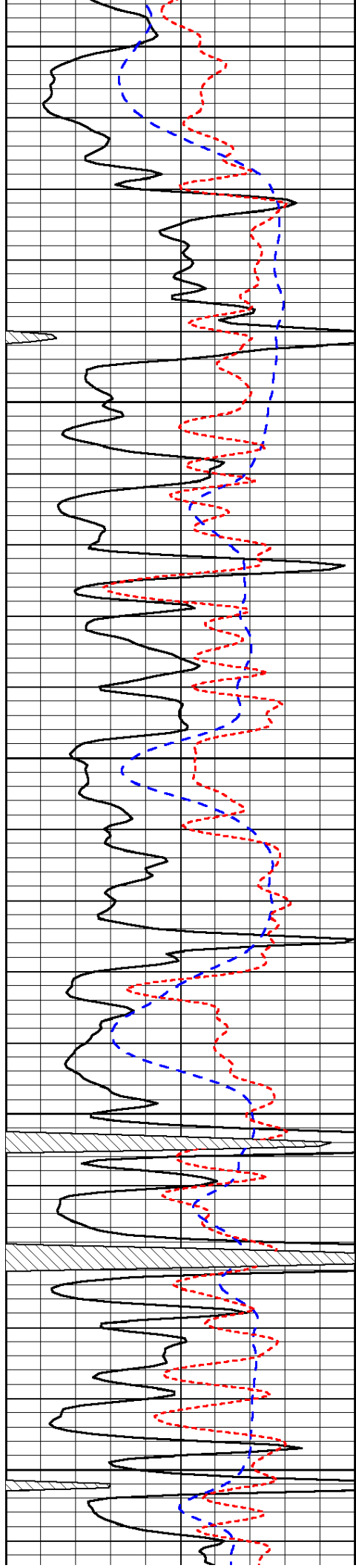


-40

-40

-40

-41



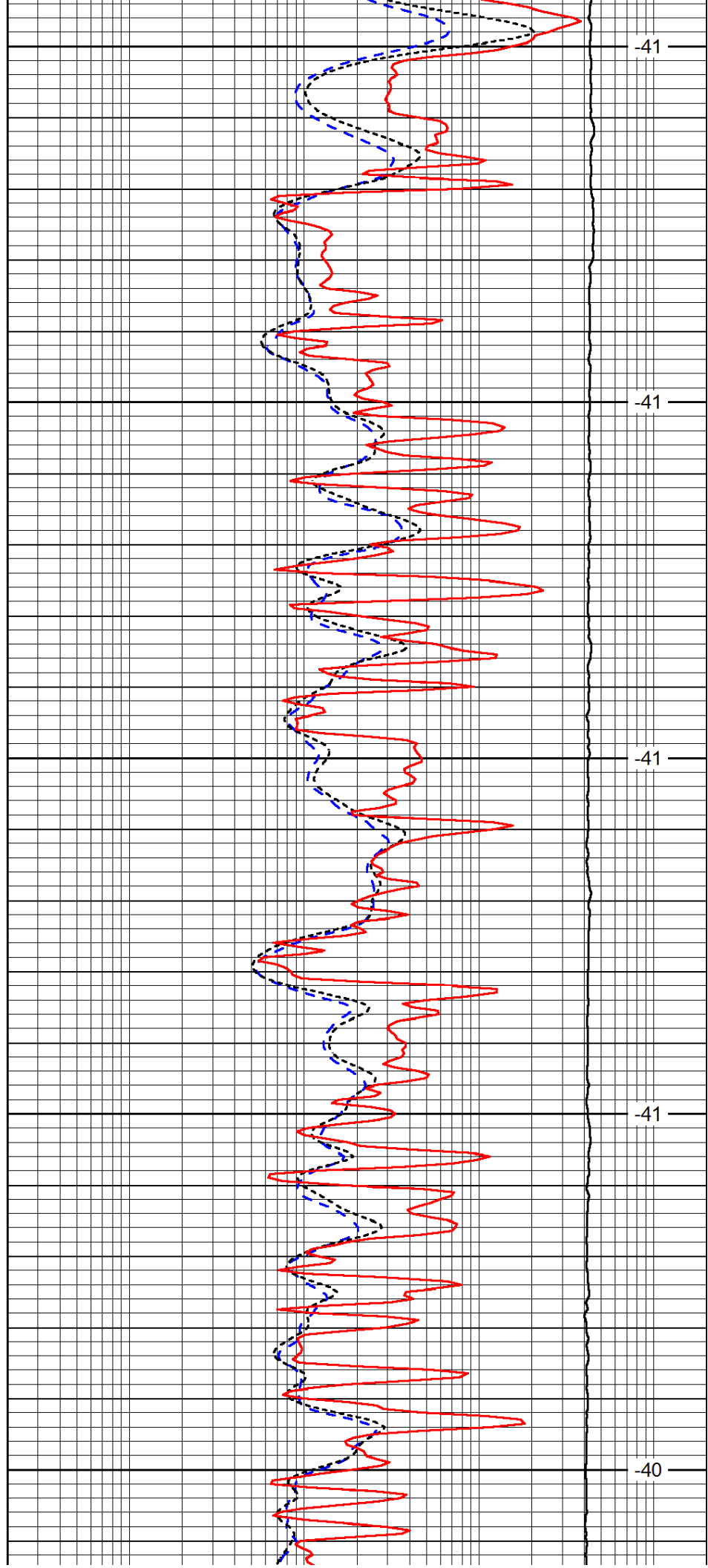
4300

4350

4400

4450

4500



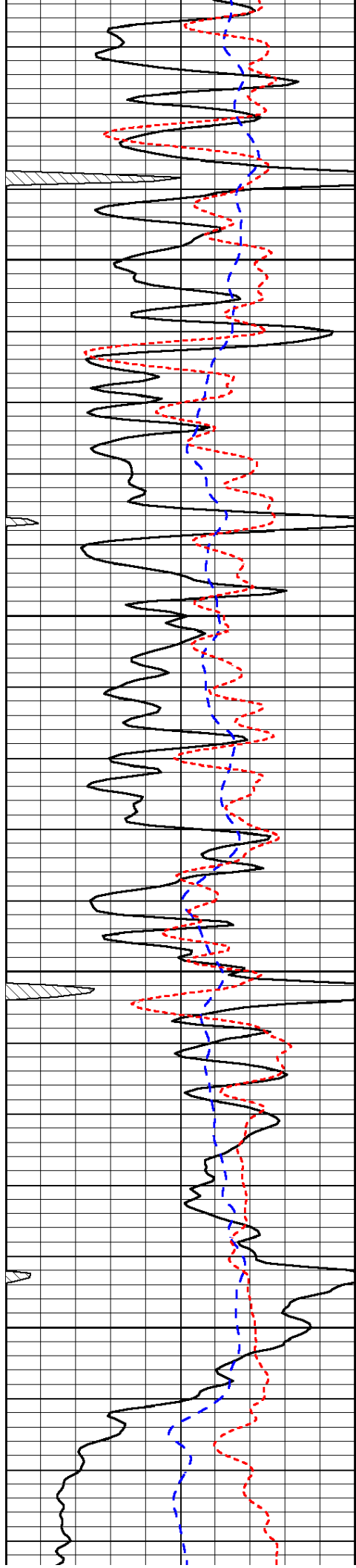
-41

-41

-41

-41

-40

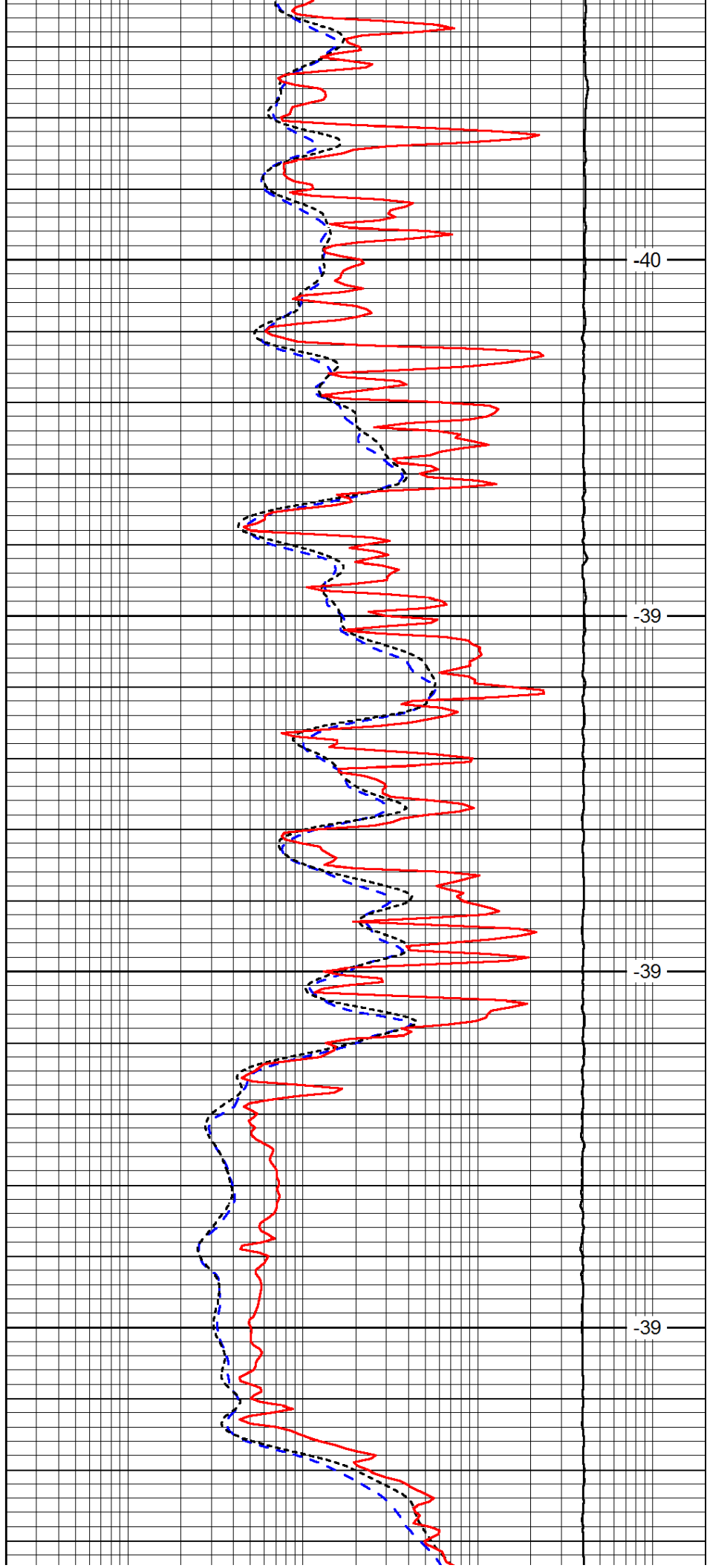


4550

4600

4650

4700

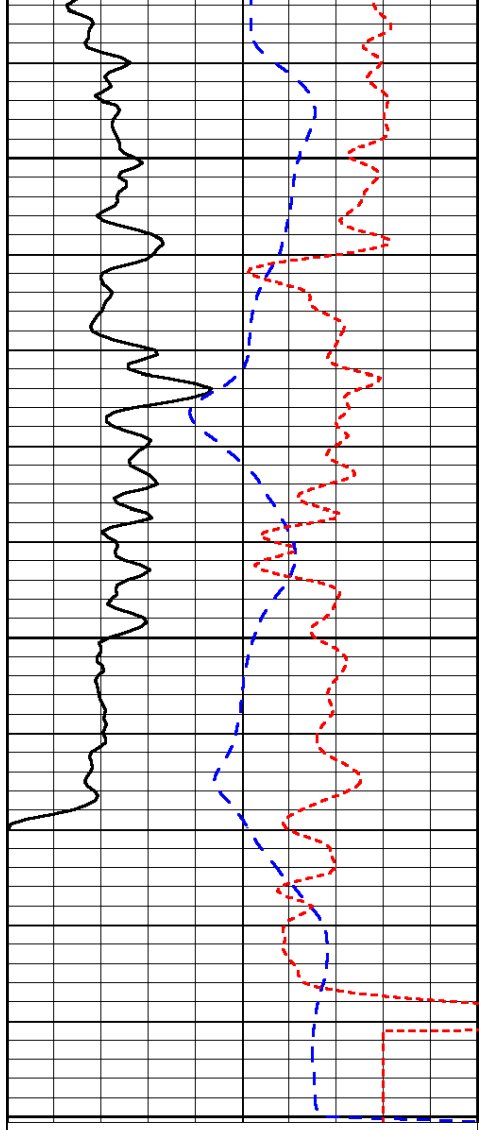


-40

-39

-39

-39

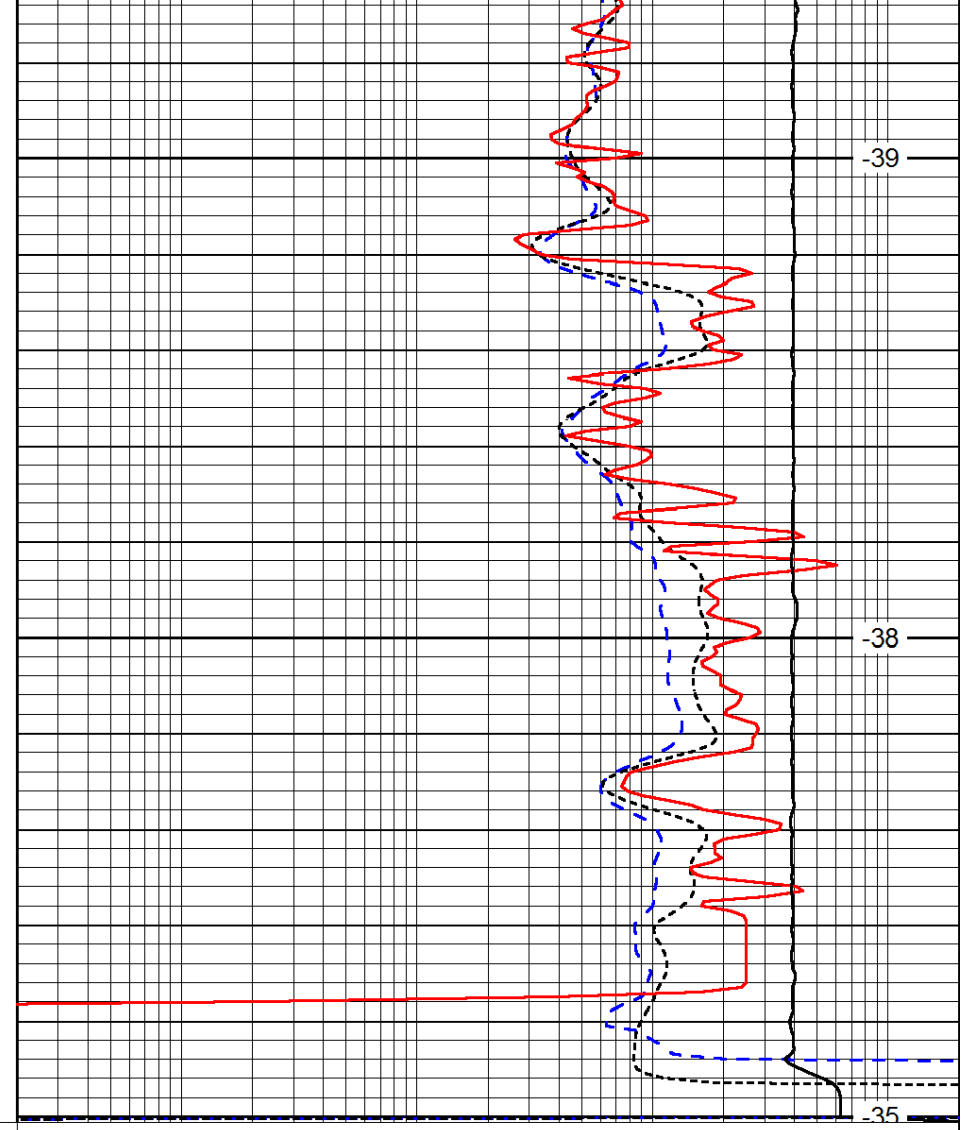


0	Gamma Ray	150
-200	SP (mV)	0
-160	Rxo / Rt	40

4750

4800

4850



-39

-38

-35

0.2	Deep Resistivity	2000
0.2	Medium Resistivity	2000
0.2	Shallow Resistivity	2000
15000	Line Tension	0

LSPD