



DIGITAL LOG (785) 625-3858

Dual Compensated Porosity Log

15-055-22, 162-00-00

API No. 15-055-22, 162-00-00

Company Lebsack Oil Production, Inc.
 Well Barlow No.2
 Field West ext. Damme
 County Finney State Kansas

Location NE SE SE
 1000' FSL & 335' FEL

Sec: 13 Twp: 22S Rge: 34W

Other Services
 DIL
 MEL

Permanent Datum Ground Level Elevation 2909
 Log Measured From Kelly Bushing 11 Ft. Above Perm. Datum
 Drilling Measured From Kelly Bushing

K.B. 2920
 D.F.
 G.L. 2909

Date	7/14/2012	
Run Number	One	
Type Log	CNL / CDL	
Depth Driller	4850	
Depth Logger	4845	
Bottom Logged Interval	4824	
Top Logged Interval	2450	
Type Fluid In Hole	Chemical	
Salinity, PPM CL	3,200	
Density	9.3	
Level	Full	
Max. Rec. Temp. F	124	
Operating Rig Time	4 Hours	
Equipment -- Location	17 Days	
Recorded By	C. Desaire	
Witnessed By	Wayne Lebsack	

Borehole Record				Casing Record			
Run No.	Bit	From	To	Size	Wgt.	From	To
1	12.25	00	411	8.625	24#	00	411
2	7.875	411	4850				

<<< Fold Here >>>

All interpretations are opinions based on inferences from electrical or other measurements and we cannot and do not guarantee the accuracy or correctness of any interpretation, and we shall not, except in the case of gross or willful negligence on our part, be liable or responsible for any loss, costs, damages, or expenses incurred or sustained by anyone resulting from any interpretation made by any of our officers, agents or employees. These interpretations are also subject to our general terms and conditions set out in our current Price Schedule.

Comments

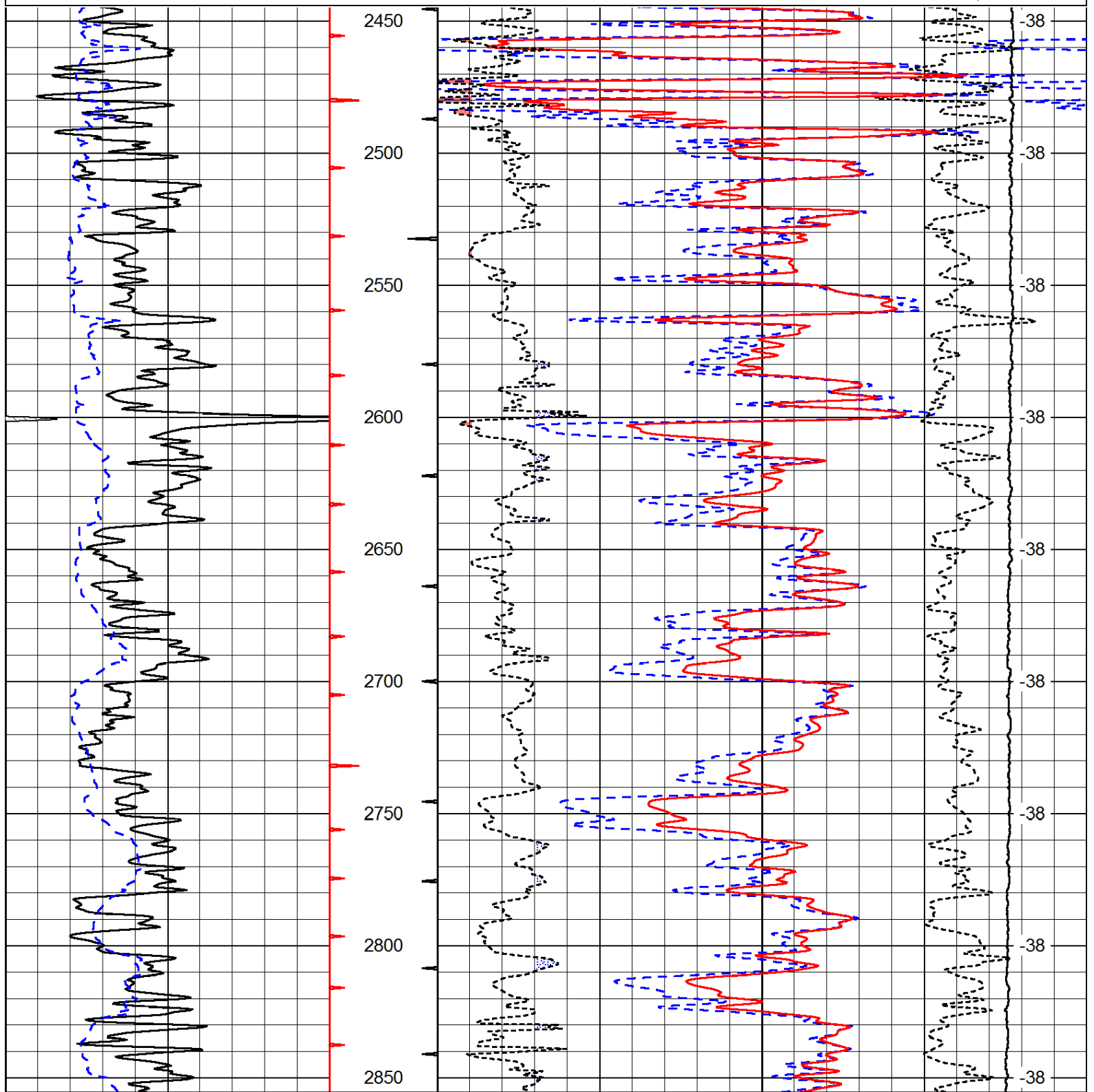
Thank you for using Log-Tech, Inc.
 (785) 625-3858

Scott City KS,
 S to Co. Ln., 4 W, 9 S,
 1 W, 1/2 N, W Into

Database File: c:\warrior\data\lebsack_barlow no.2\lebsackhd.db
 Dataset Pathname: dil/lebstk
 Presentation Format: cdl
 Dataset Creation: Sat Jul 14 17:09:48 2012
 Charted by: Depth in Feet scaled 1:600

0	Gamma Ray	150
6	Caliper (GAPI)	16

30	Compensated Density			-10	
2	Bulk Density			3	
15000	Line Tension			0	
2.625	DGA	3.425	-0.25	Correction	0.25
LSPD					

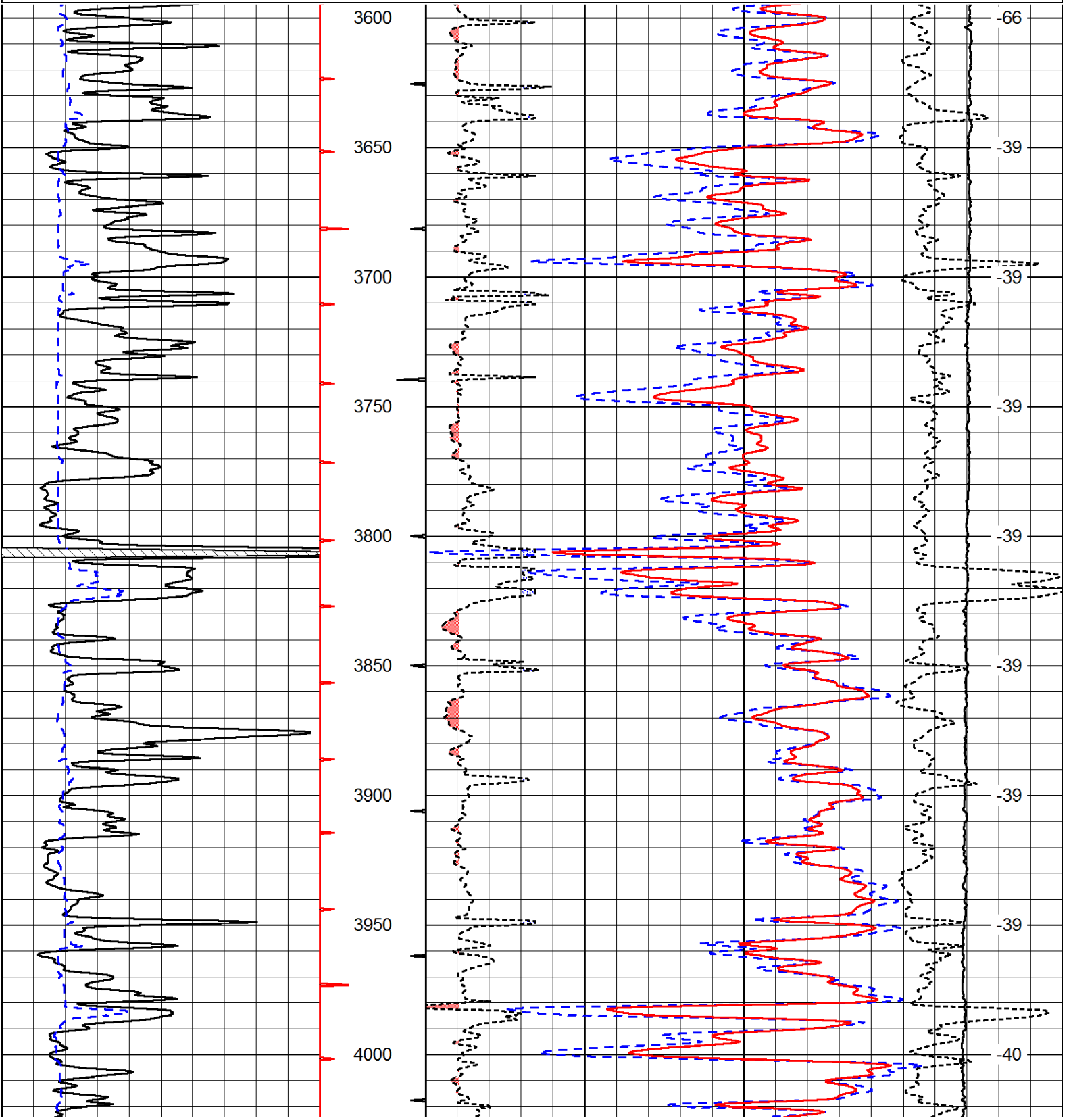


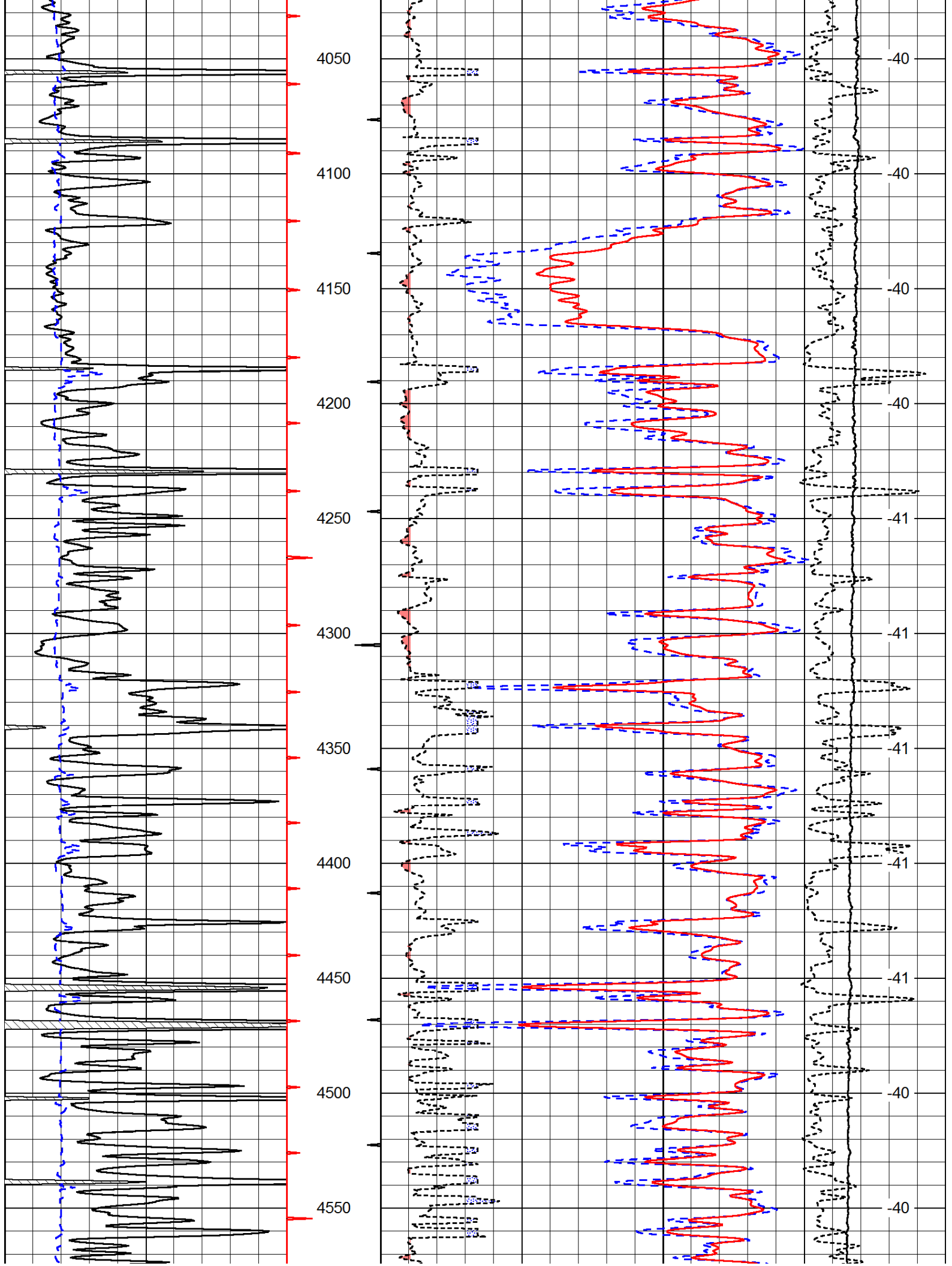
0	Gamma Ray	150
6	Caliper (GAPI)	16

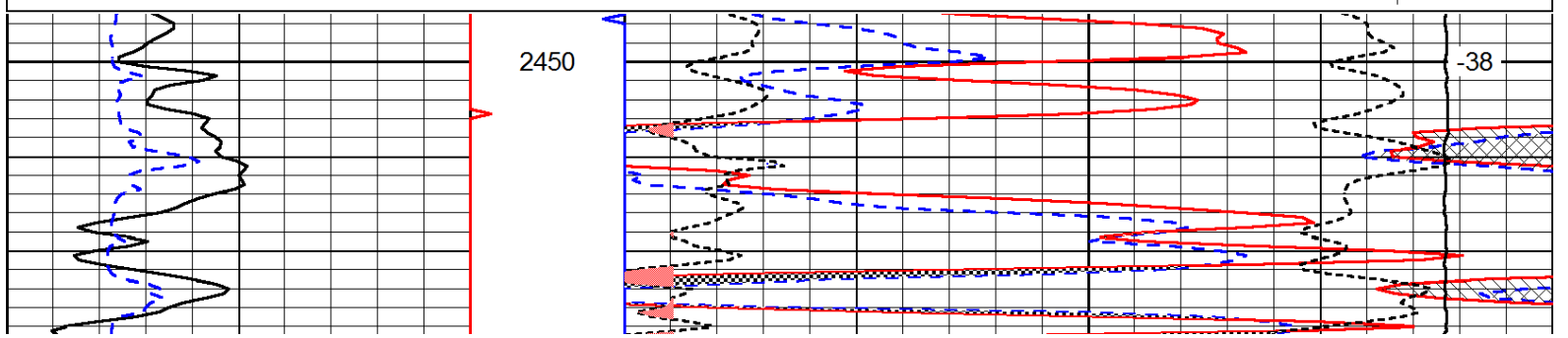
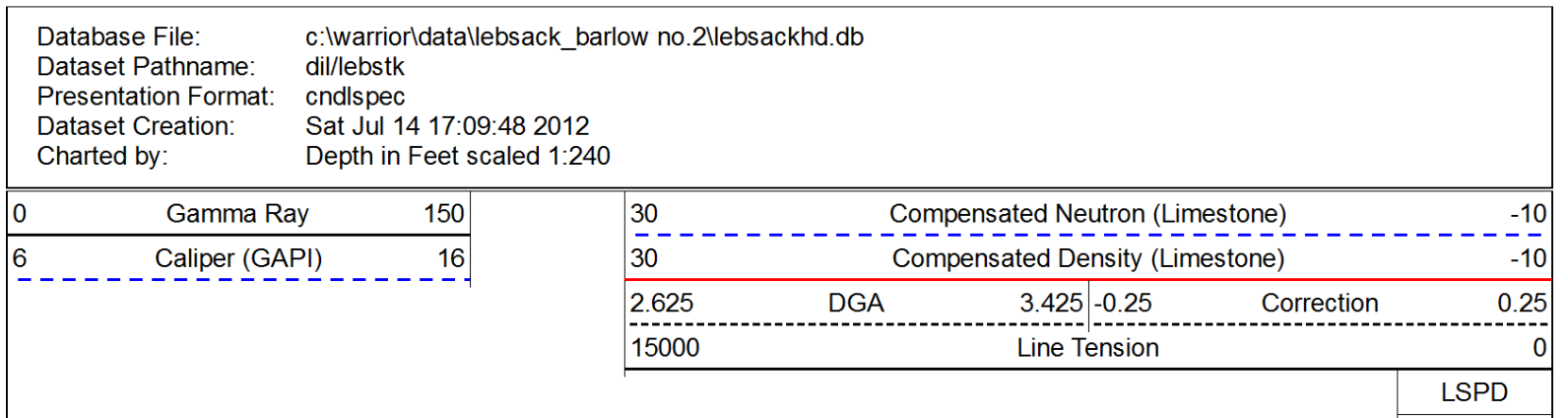
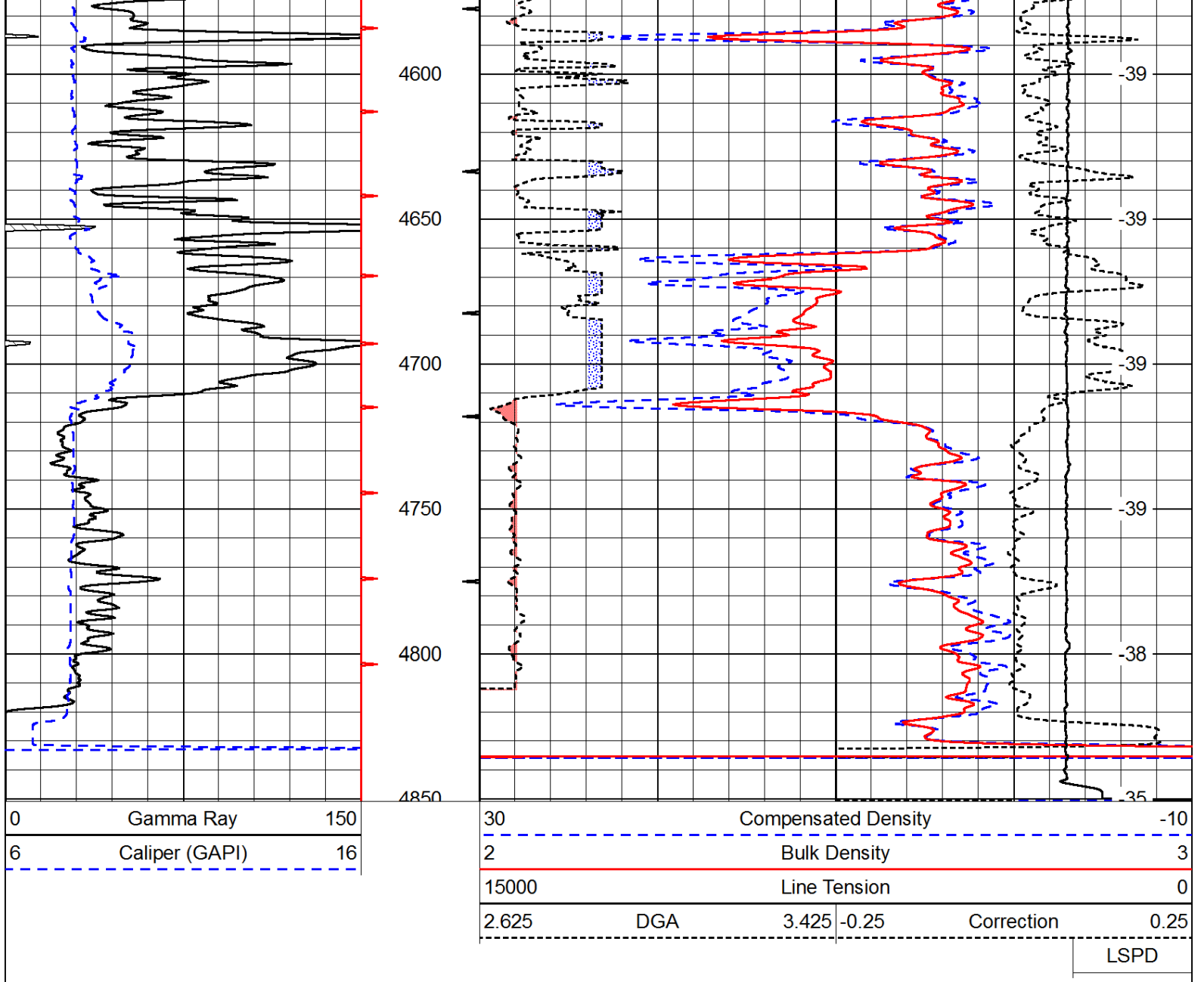
30	Compensated Density			-10	
2	Bulk Density			3	
15000	Line Tension			0	
2.625	DGA	3.425	-0.25	Correction	0.25
LSPD					

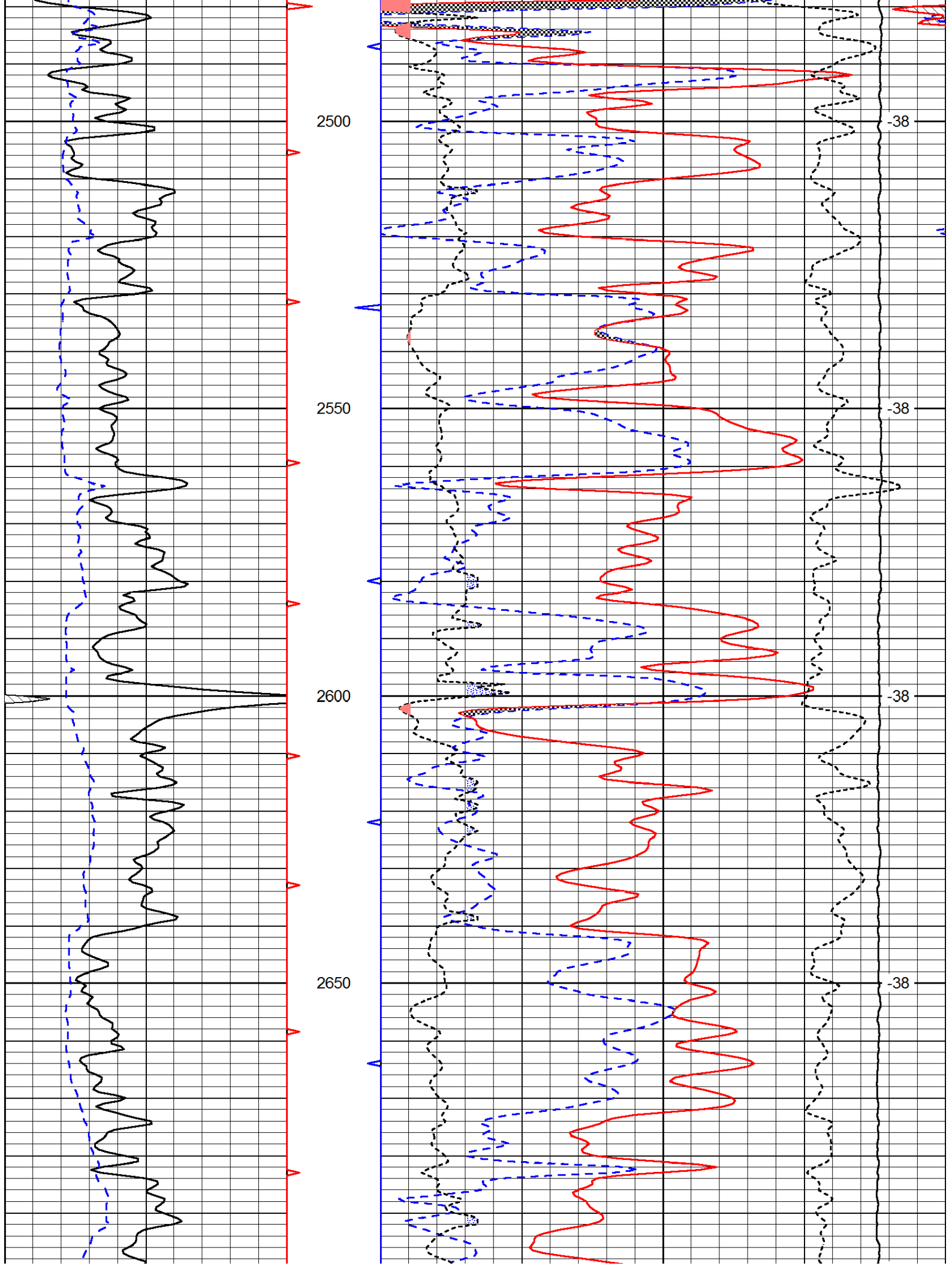
Database File: c:\warrior\data\lebsack_barlow no.2\lebsackhd.db
 Dataset Pathname: dil/lebstk
 Presentation Format: cdl
 Dataset Creation: Sat Jul 14 17:09:48 2012
 Charted by: Depth in Feet scaled 1:600

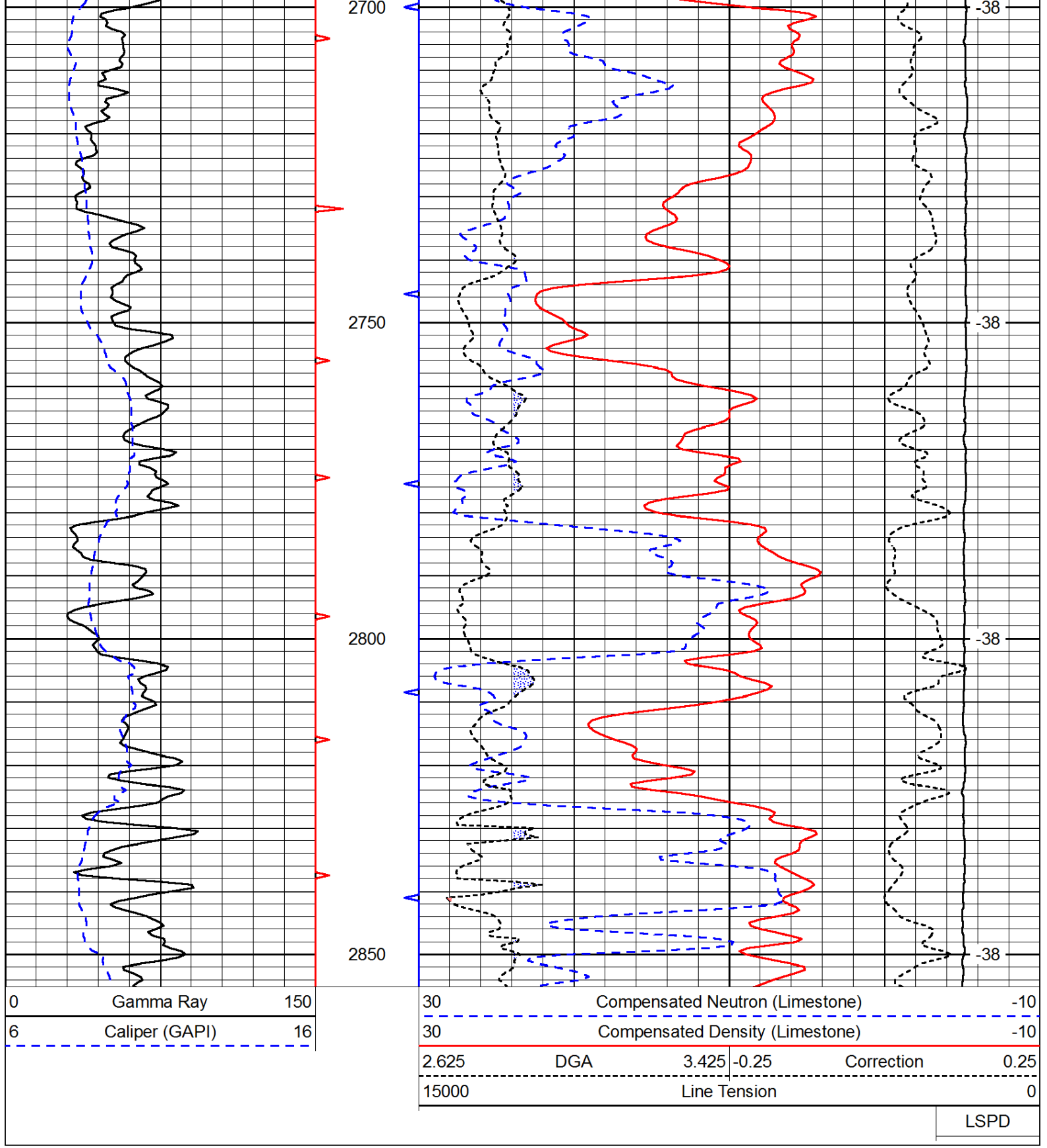
0	Gamma Ray	150	30	Compensated Density		-10
6	Caliper (GAPI)	16	2	Bulk Density		3
			15000	Line Tension		0
			2.625	DGA	3.425	-0.25
				Correction		0.25
						LSPD





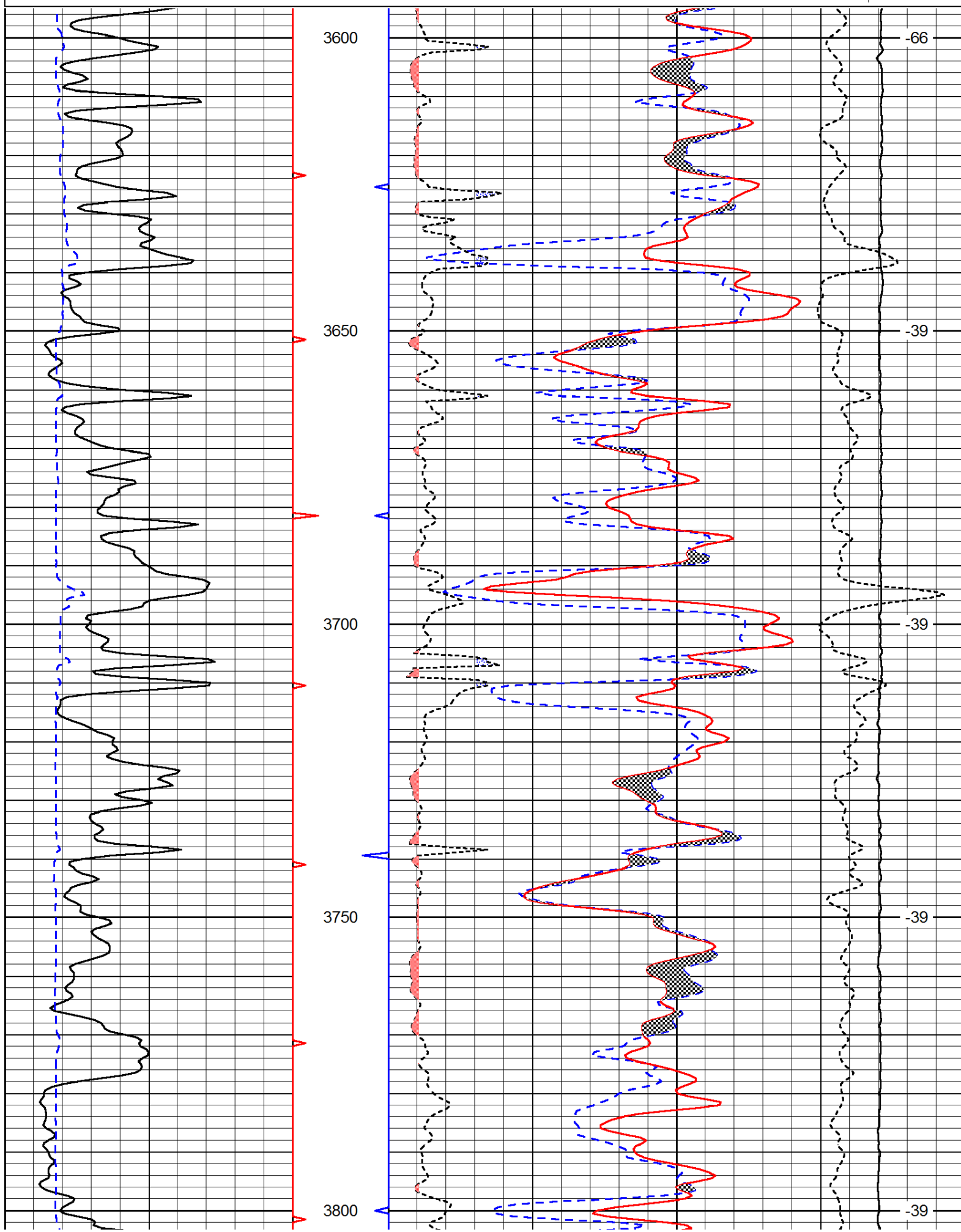


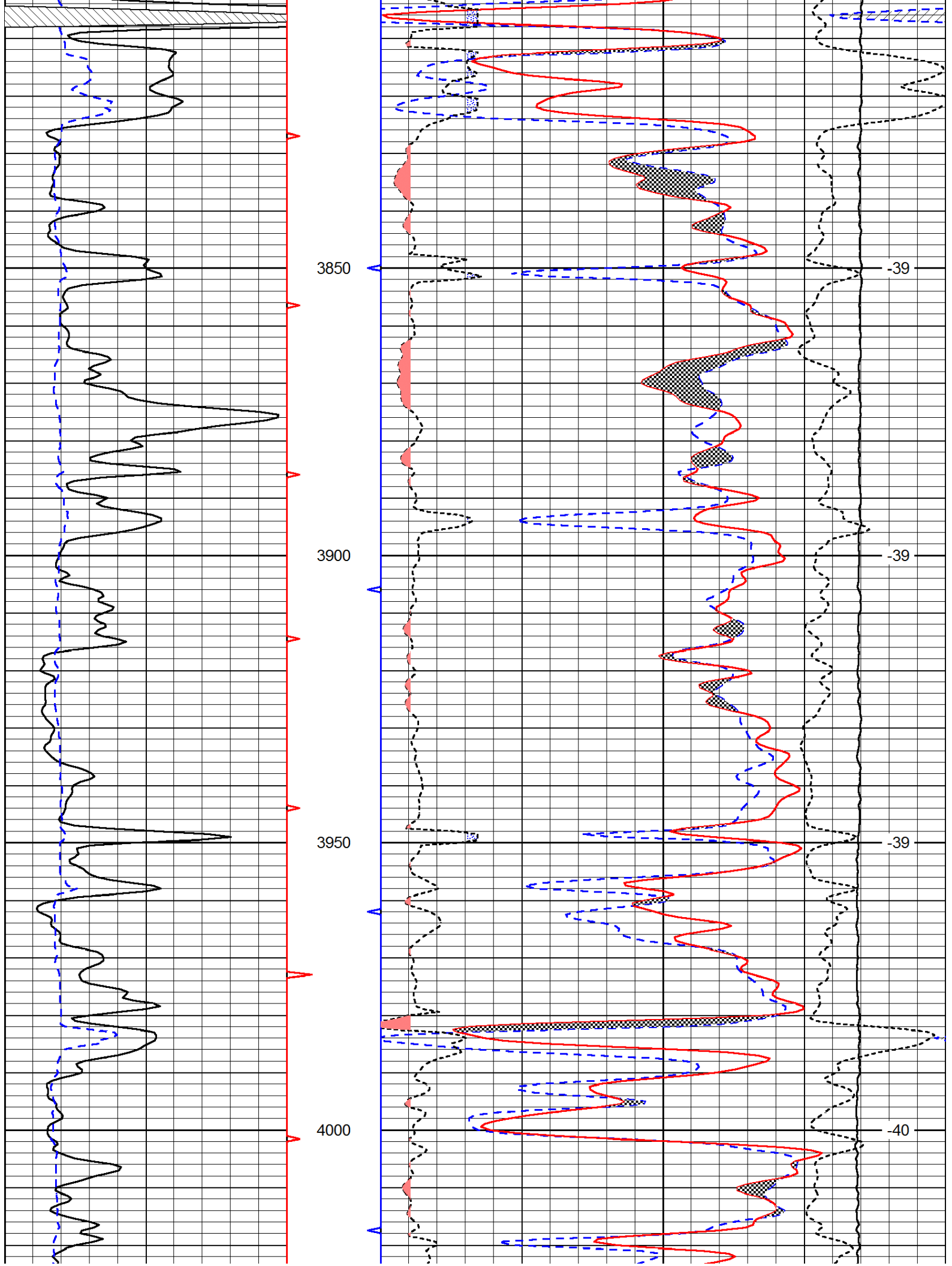


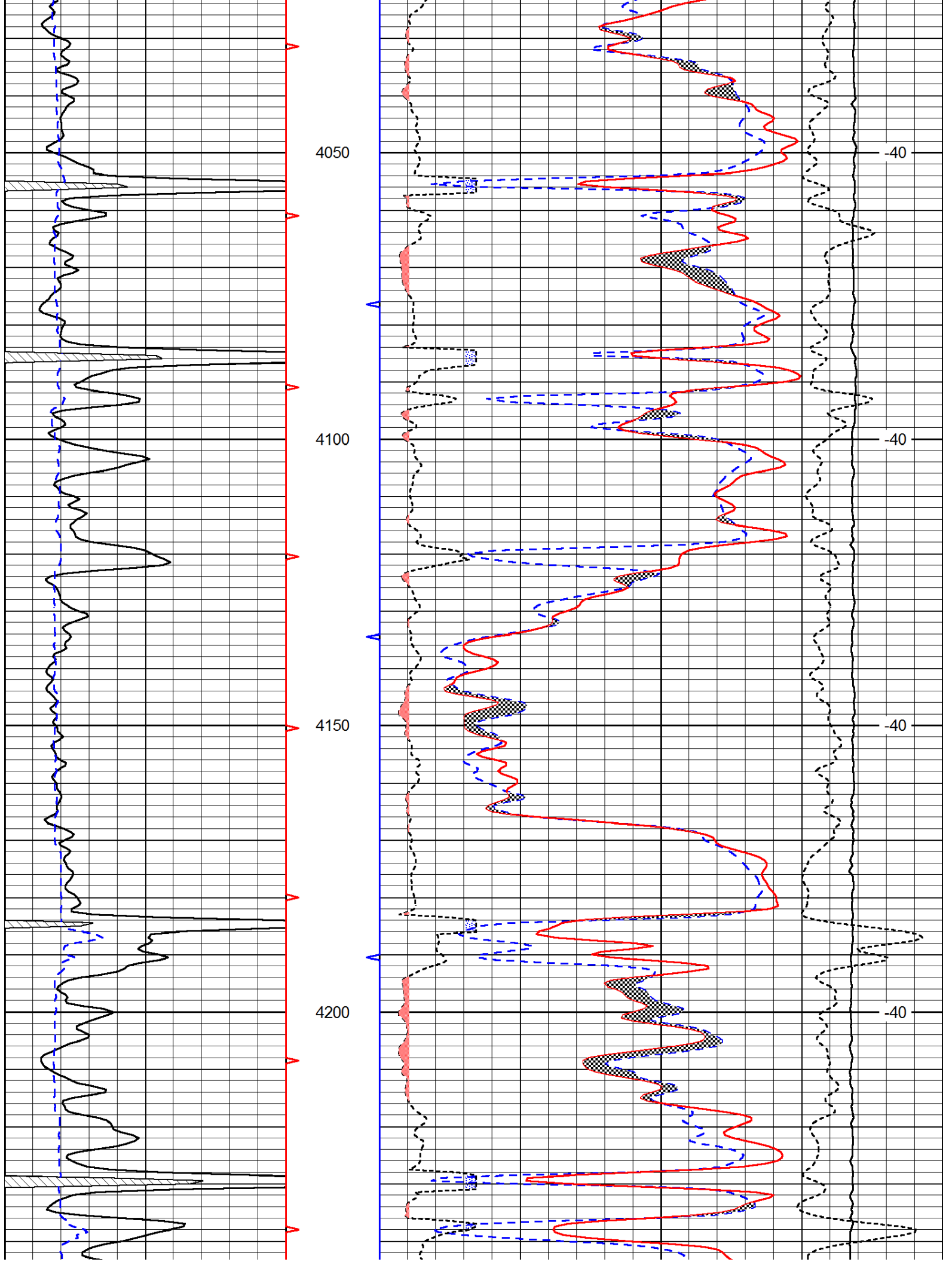


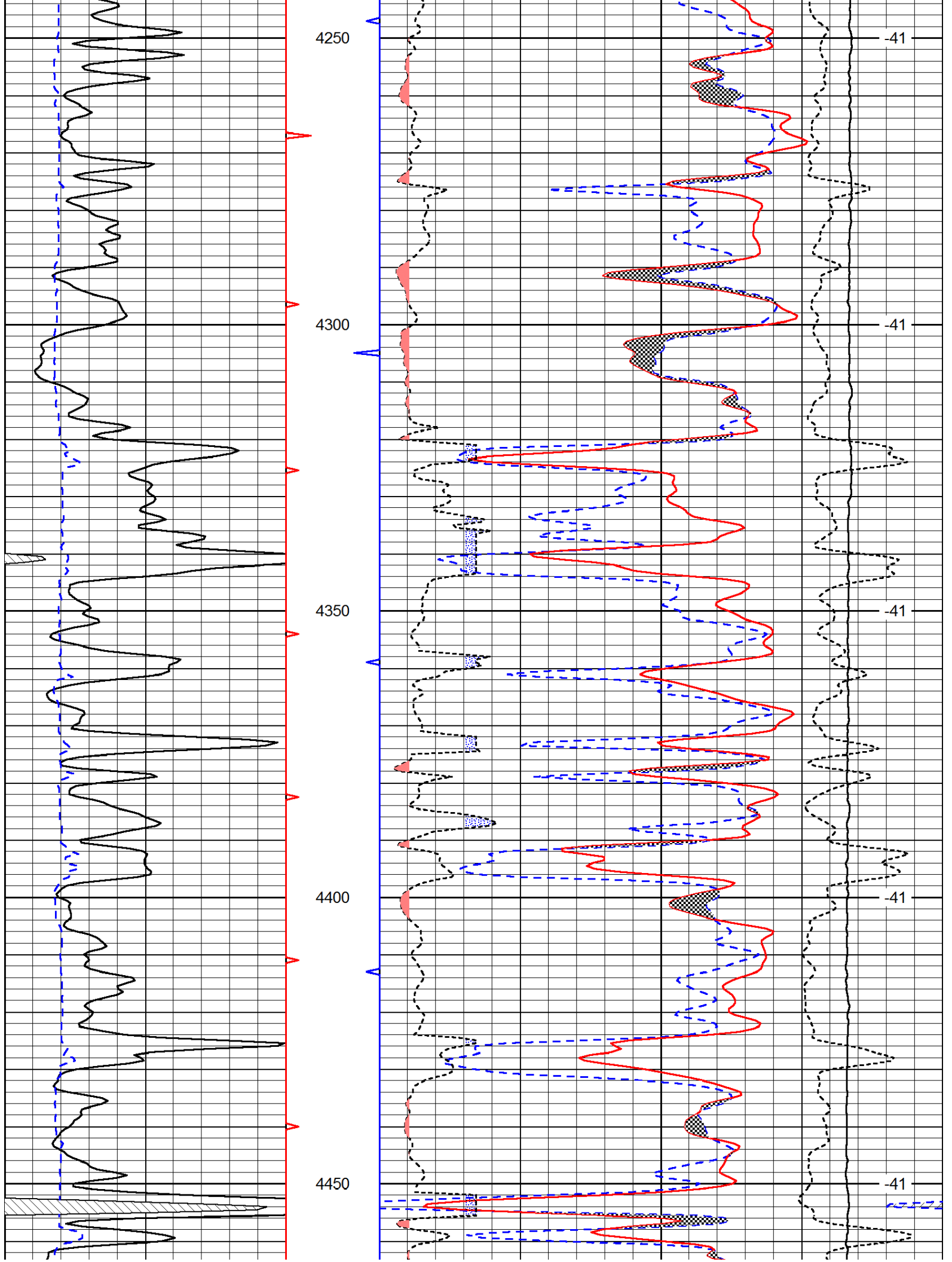
Database File: c:\warrior\data\lebsack_barlow no.2\lebsackhd.db
 Dataset Pathname: dil/lebstk
 Presentation Format: cndlspec
 Dataset Creation: Sat Jul 14 17:09:48 2012
 Charted by: Depth in Feet scaled 1:240

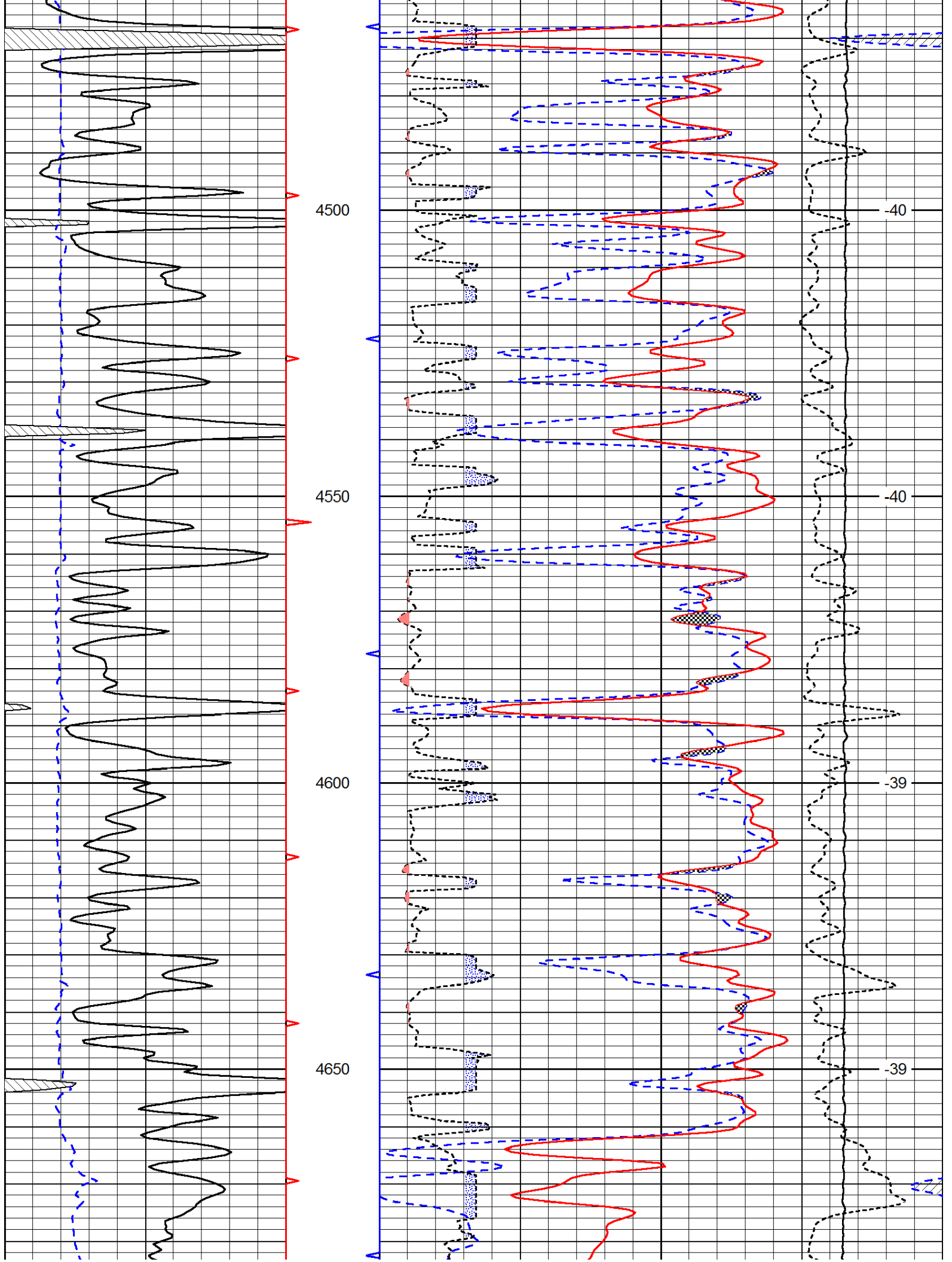
0	Gamma Ray	150	30	Compensated Neutron (Limestone)	-10
6	Caliper (GAPI)	16	30	Compensated Density (Limestone)	-10
2.625	DGA	3.425	-0.25	Correction	0.25
15000	Line Tension				0

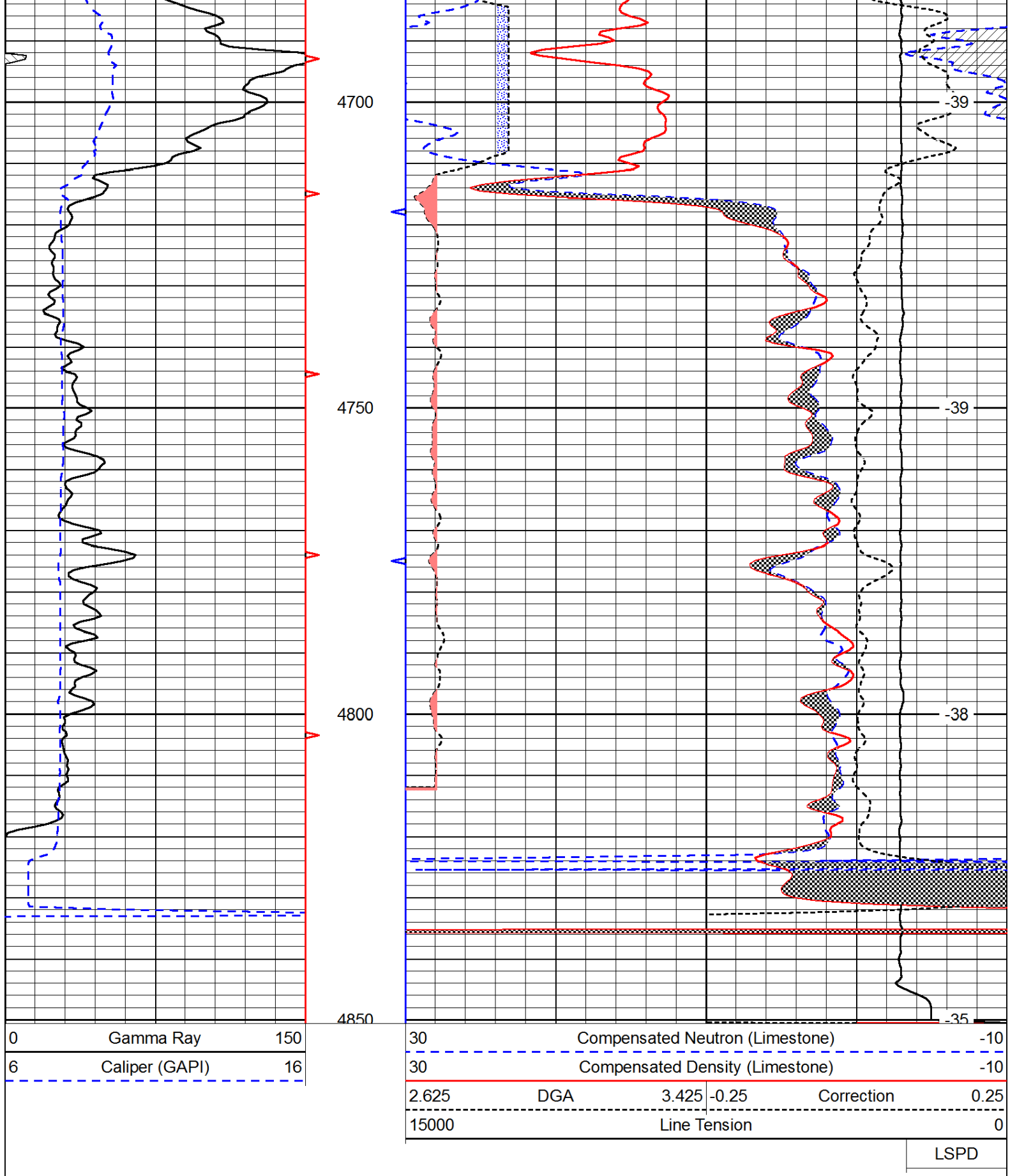












4700

4750

4800

4850

-39

-39

-38

-35

0	Gamma Ray	150
6	Caliper (GAPI)	16

30	Compensated Neutron (Limestone)		-10
30	Compensated Density (Limestone)		-10
2.625	DGA	3.425 -0.25	Correction 0.25
15000	Line Tension		0

LSPD