



Microresistivity Log

DIGITAL LOG (785) 625-3858

15-055-22,162-00-00

API No.

Company Lebsack Oil Production, Inc.

Well Barlow No.2

Field West ext. Damme

County Finney State Kansas

Location

NE SE SE
1000' FSL & 335' FEL

Other Services
CNL/CDL
DIL

Sec: 13 Twp: 22S Rge: 34W

Permanent Datum Ground Level Elevation 2909
Log Measured From Kelly Bushing 11 Ft. Above Perm. Datum

Drilling Measured From Kelly Bushing

Elevation
K.B. 2920
D.F.
G.L. 2909

Date 7/14/2012

Run Number Two

Depth Driller 4850

Depth Logger 4845

Bottom Logged Interval 4844

Top Log Interval 2450

Casing Driller 8.625 @ 411

Casing Logger 418

Bit Size 7.875

Type Fluid in Hole Chemical

Salinity,ppm CL 3,200

Density / Viscosity 9.3 49

pH / Fluid Loss 10.5 6.4

Source of Sample Flowline

Rm @ Meas. Temp .8 @ 82

Rmf @ Meas. Temp .6 @ 82

Rmc @ Meas. Temp 1.08 @ 82

Source of Rmf / Rmc Charts

Rm @ BHT .53 @ 124

Operating Rig Time 4 Hours

Max Rec. Temp. F 124

Equipment Number 17

Location Hays

Recorded By C. Desaire

Witnessed By Wayne Lebsack

<<< Fold Here >>>

All interpretations are opinions based on inferences from electrical or other measurements and we cannot and do not guarantee the accuracy or correctness of any interpretation, and we shall not, except in the case of gross or willful negligence on our part, be liable or responsible for any loss, costs, damages, or expenses incurred or sustained by anyone resulting from any interpretation made by any of our officers, agents or employees. These interpretations are also subject to our general terms and conditions set out in our current Price Schedule.

Comments

Thank you for using Log-Tech, Inc.
(785) 625-3858

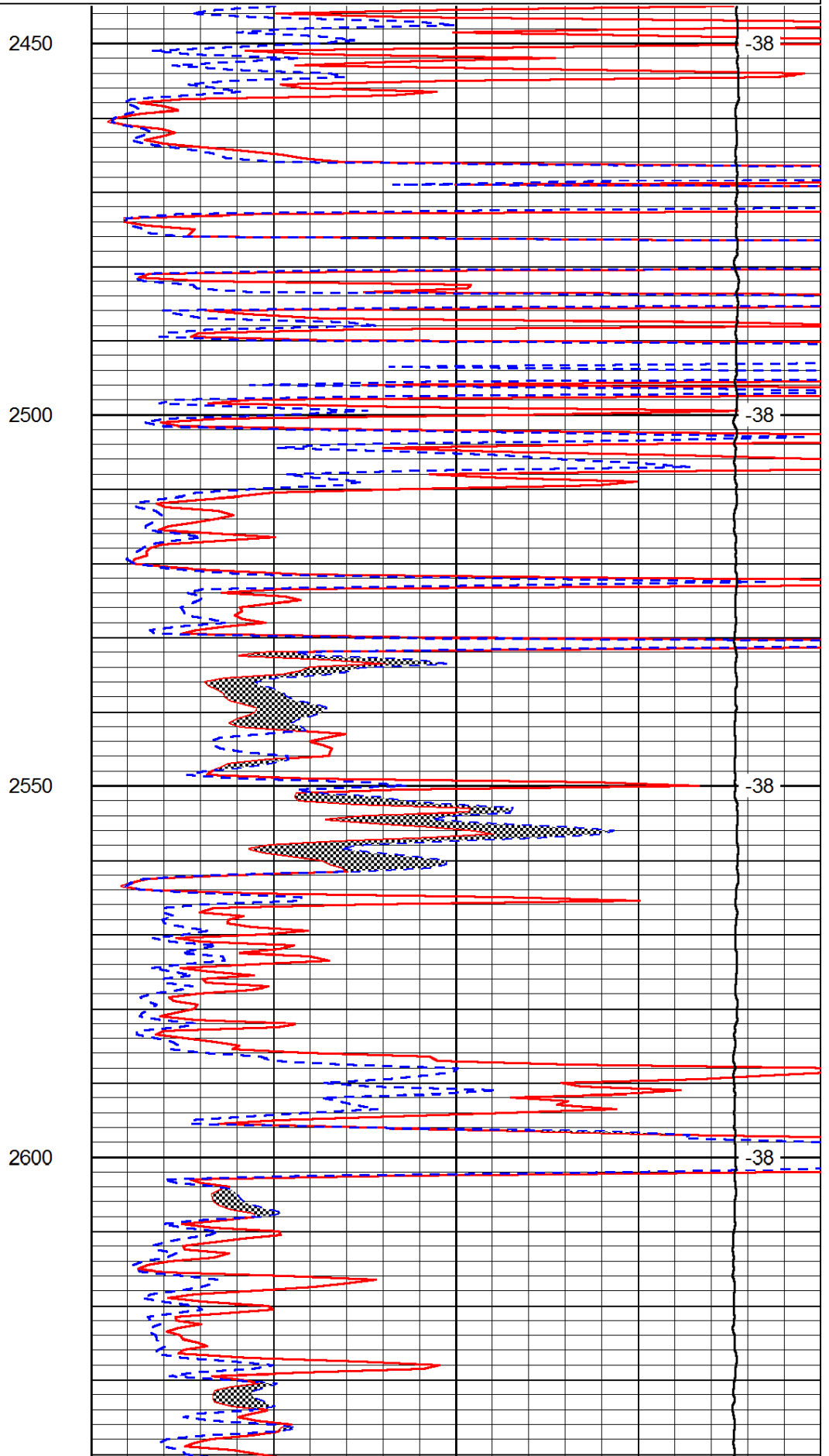
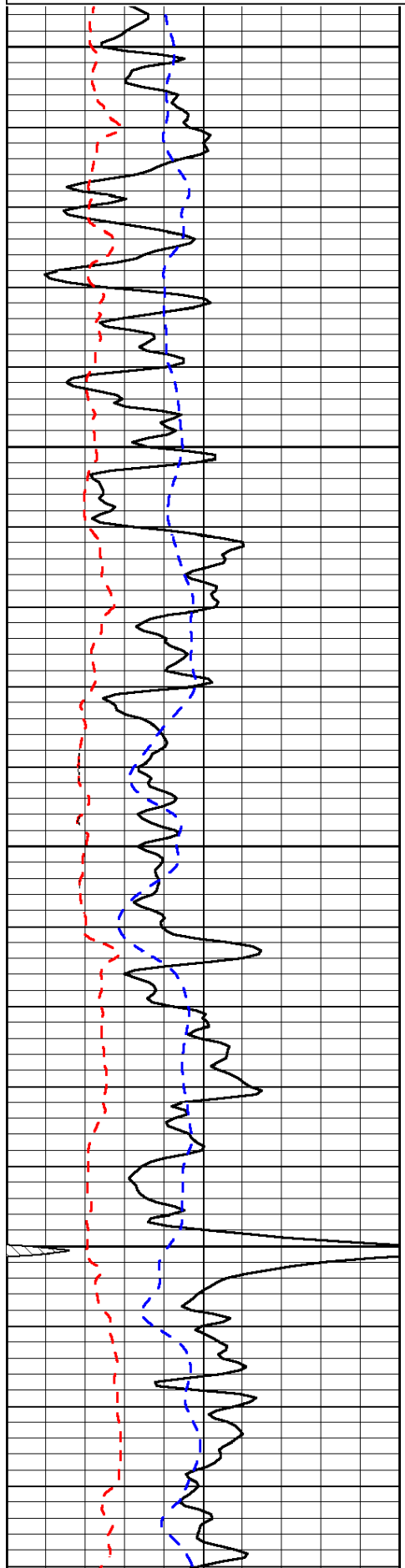
Scott City KS,
S to Co. Ln., 4 W, 9 S,
1 W, 1/2 N, W Into

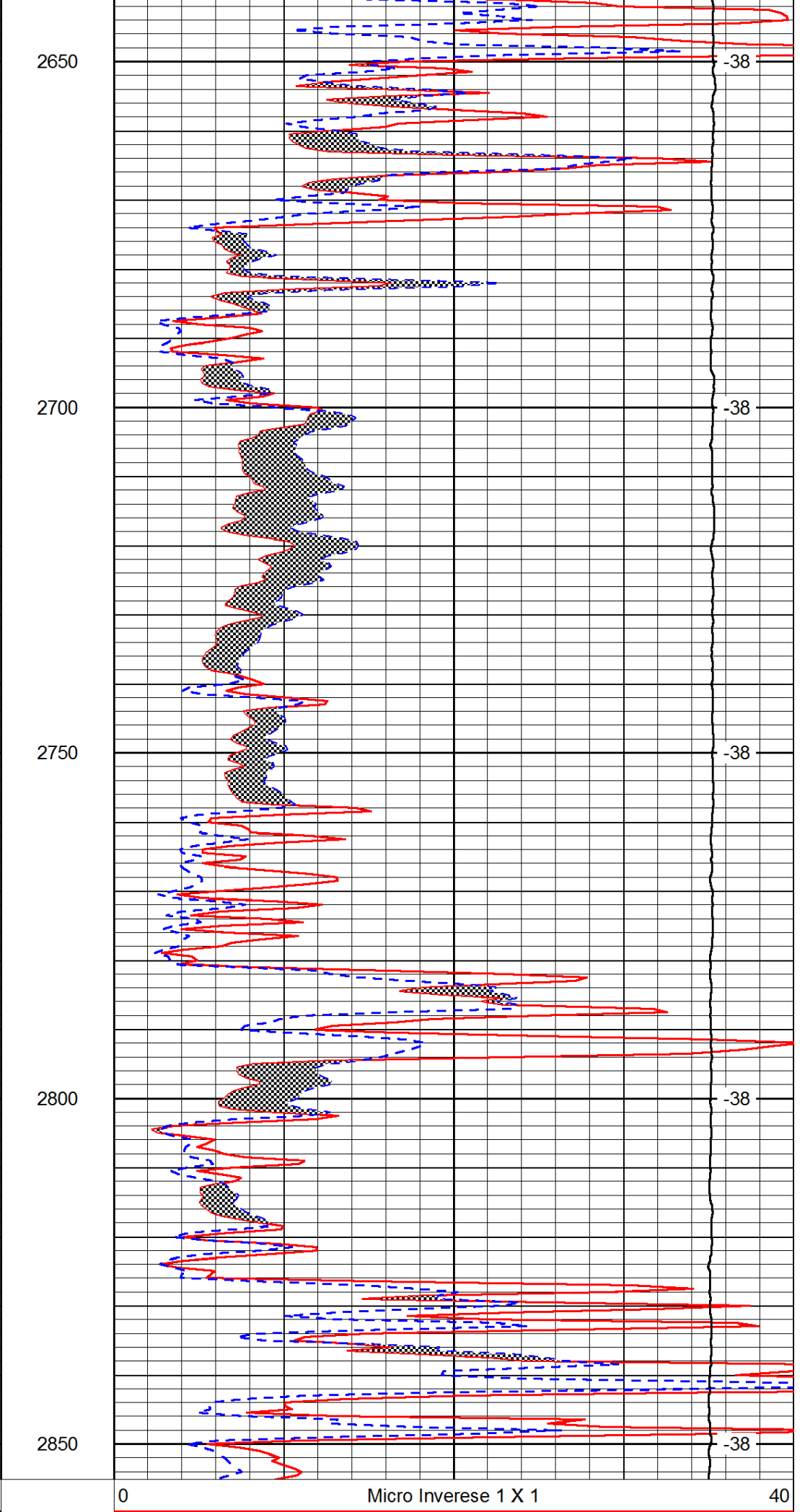
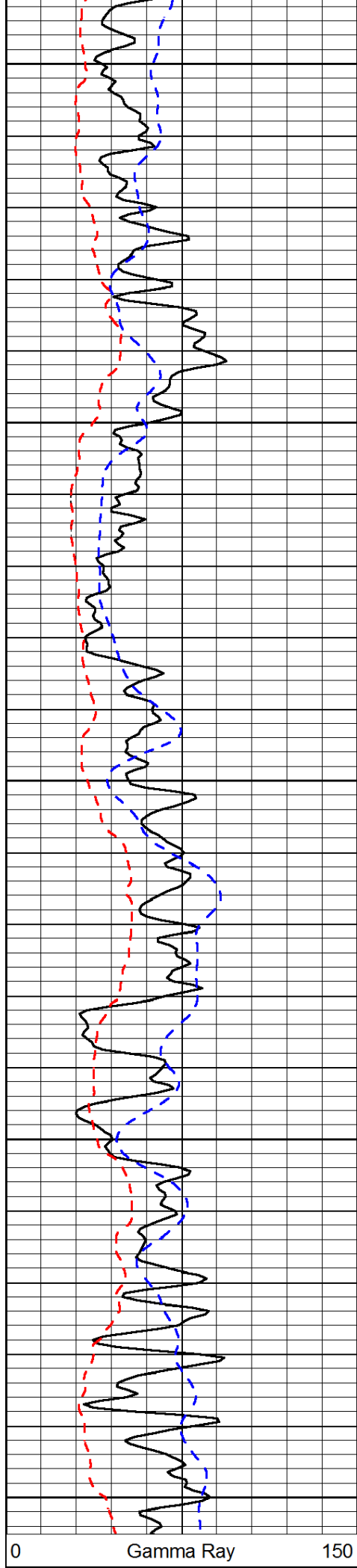
Database File: c:\warrior\data\lebsack_barlow no.2\lebsackhd.db
Dataset Pathname: dil/lebstk
Presentation Format: micro
Dataset Creation: Sat Jul 14 17:09:48 2012
Charted by: Depth in Feet scaled 1:240

0	Gamma Ray	150
6	Micro Log Caliper (GAPI)	16
-200	SP (mV)	0

0	Micro Inverse 1 X 1	40
0	Micro Normal 2"	40
15000	Line Weight	0

LSPD





6	Micro Log Caliper (GAPI)	16
-200	SP (mV)	0

0	Micro Inverse 1 X 1	40
15000	Line Weight	0

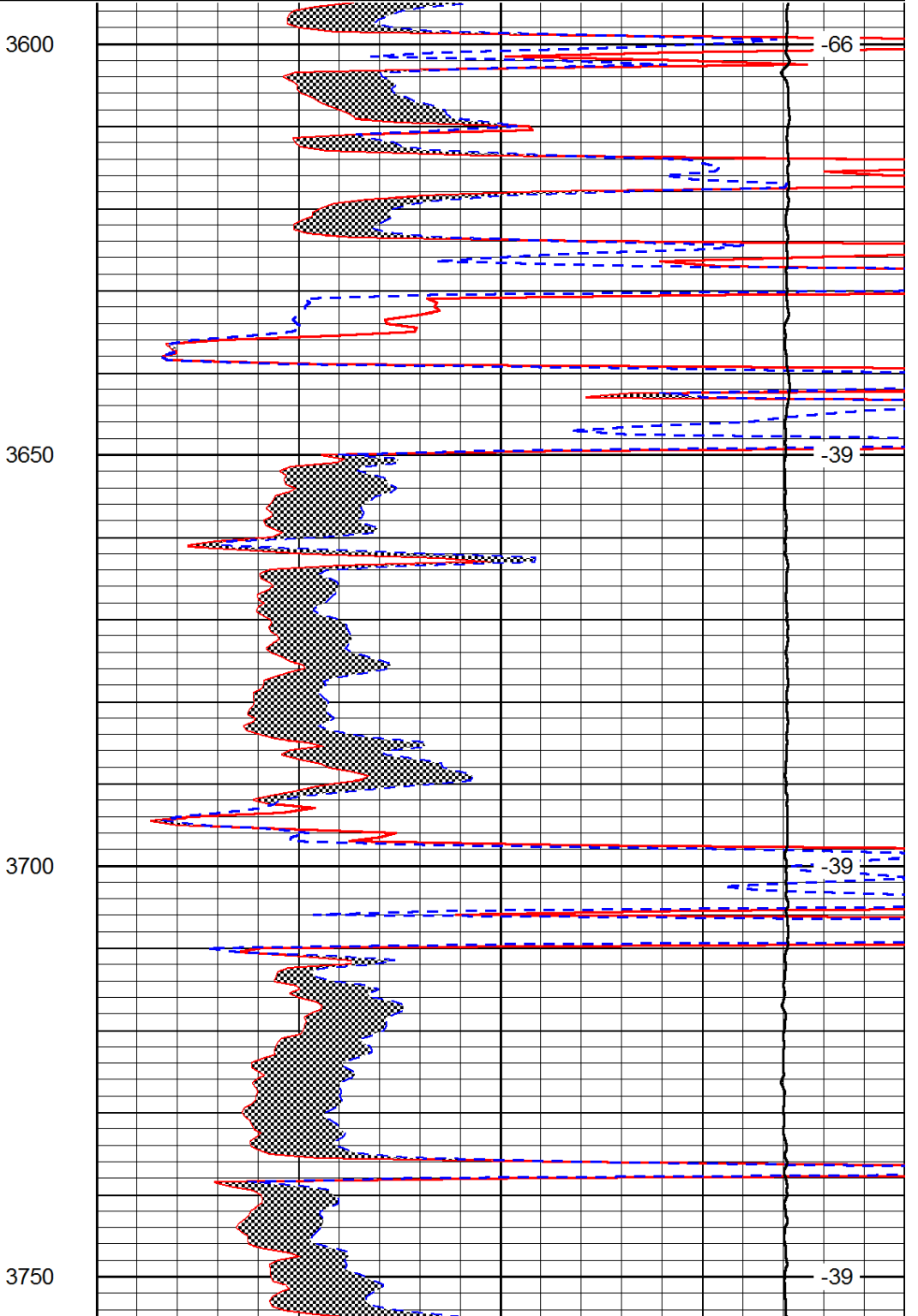
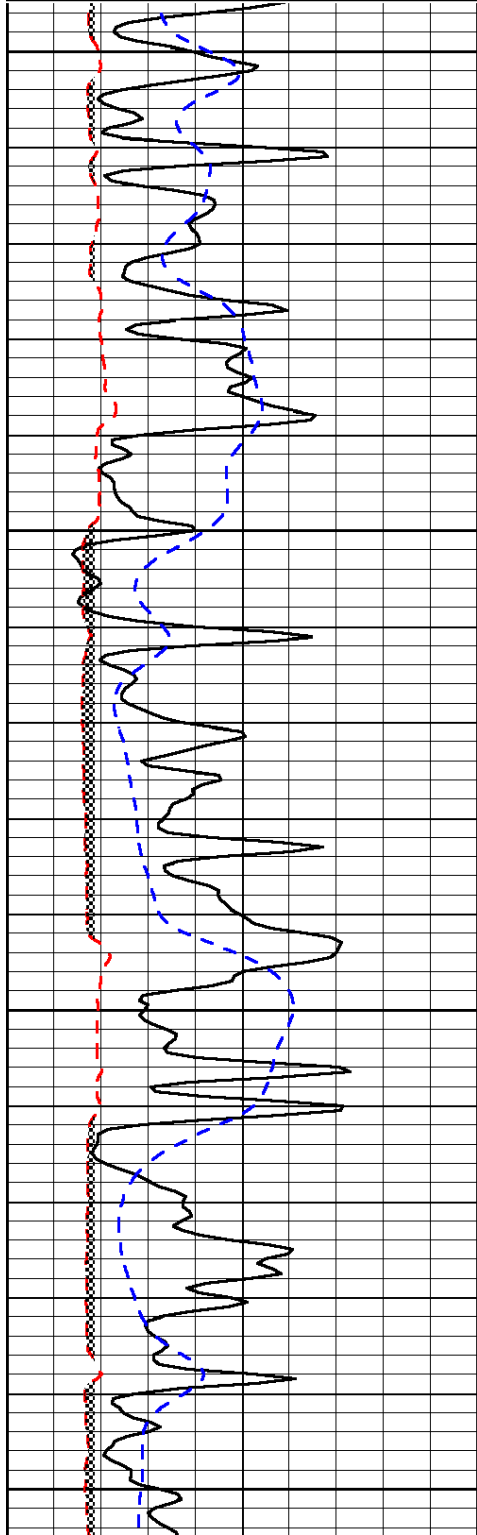
LSPD

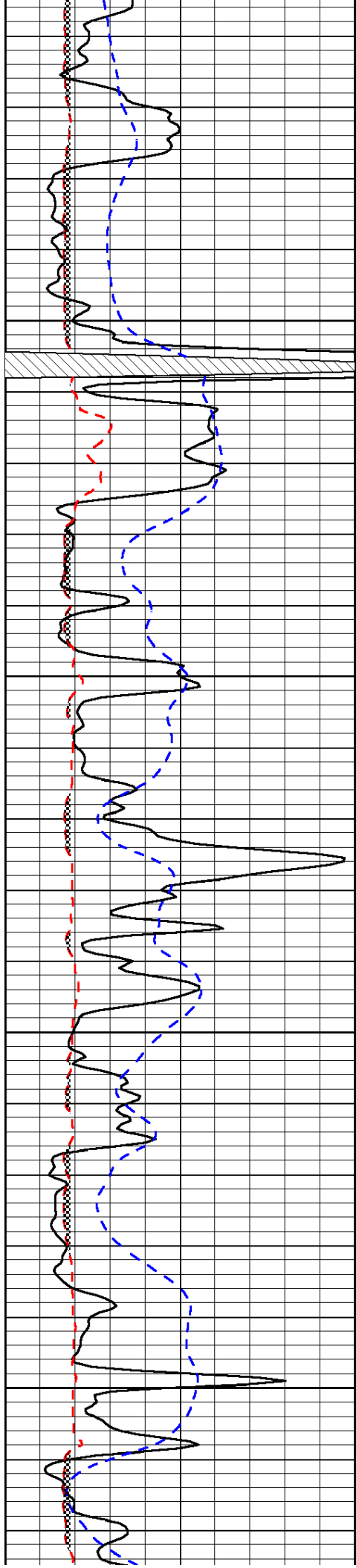
Database File: c:\warrior\data\lebsack_barlow no.2\lebsackhd.db
 Dataset Pathname: dil/lebstk
 Presentation Format: micro
 Dataset Creation: Sat Jul 14 17:09:48 2012
 Charted by: Depth in Feet scaled 1:240

0	Gamma Ray	150
6	Micro Log Caliper (GAPI)	16
-200	SP (mV)	0

0	Micro Inverse 1 X 1	40
0	Micro Normal 2"	40
15000	Line Weight	0

LSPD



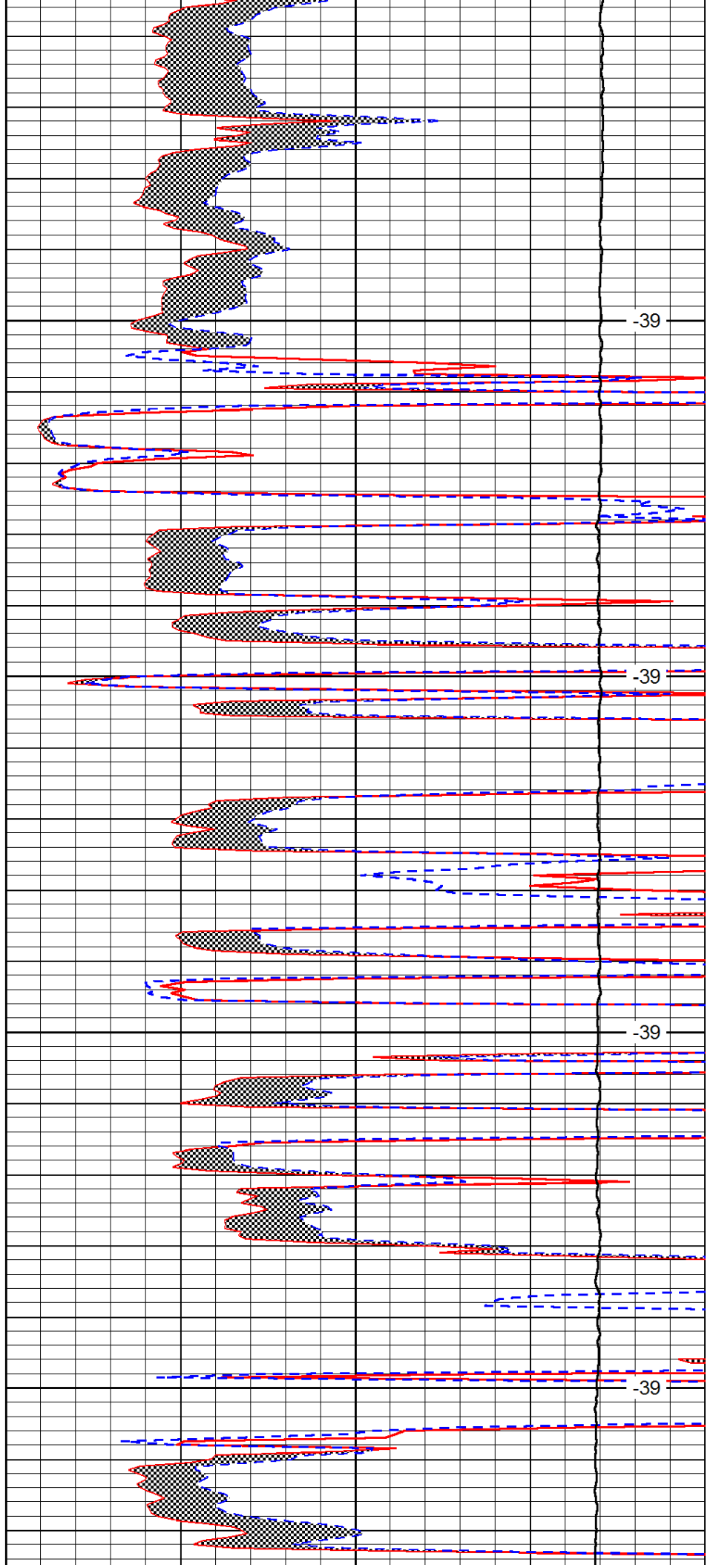


3800

3850

3900

3950

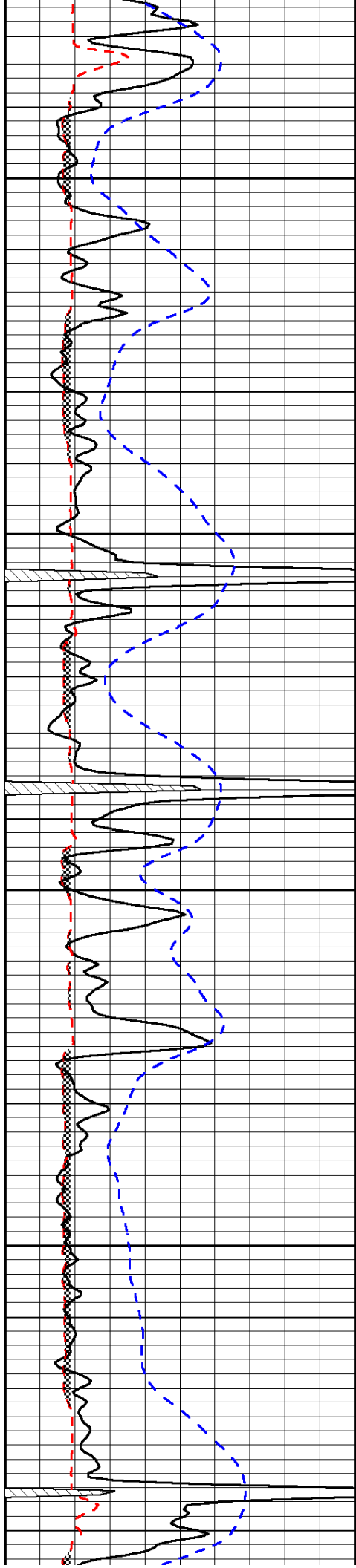


-39

-39

-39

-39

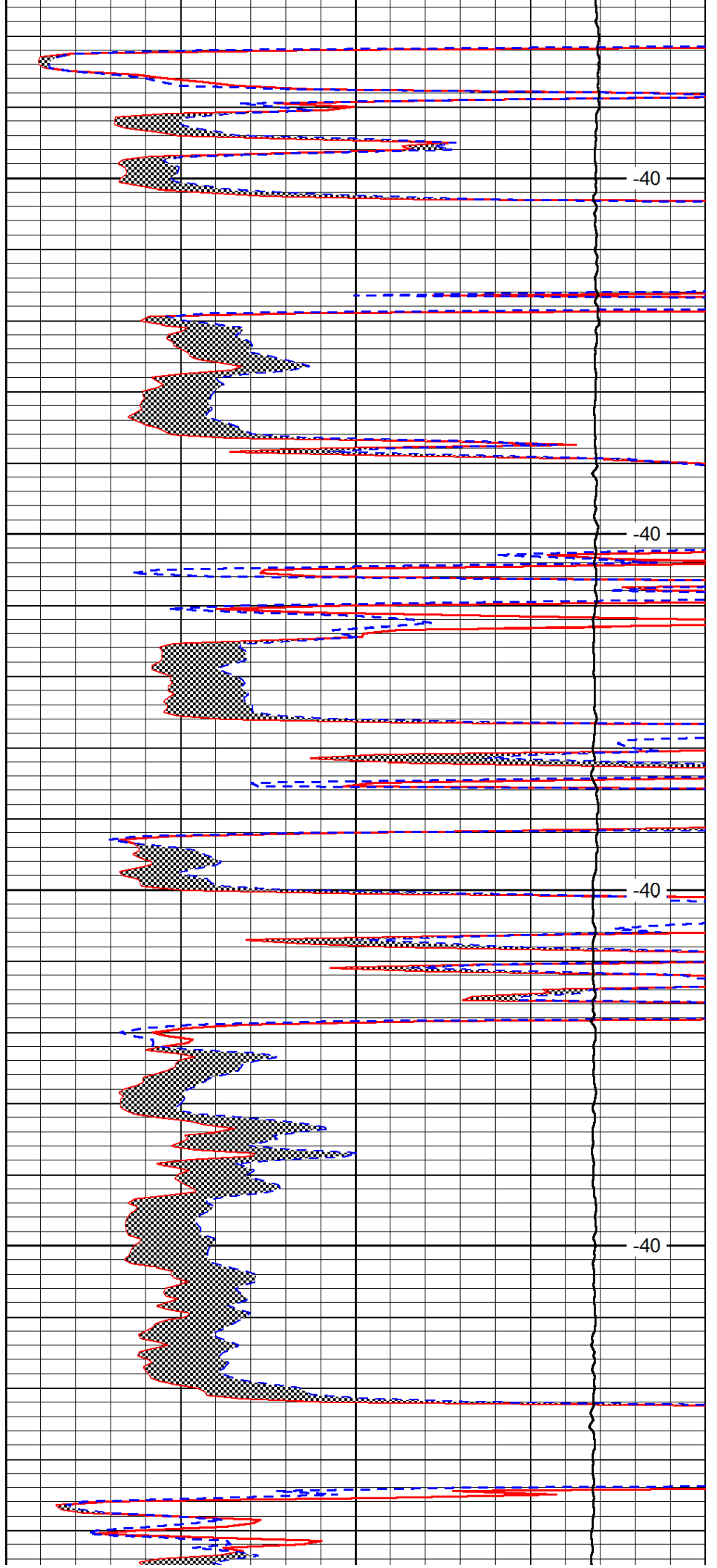


4000

4050

4100

4150

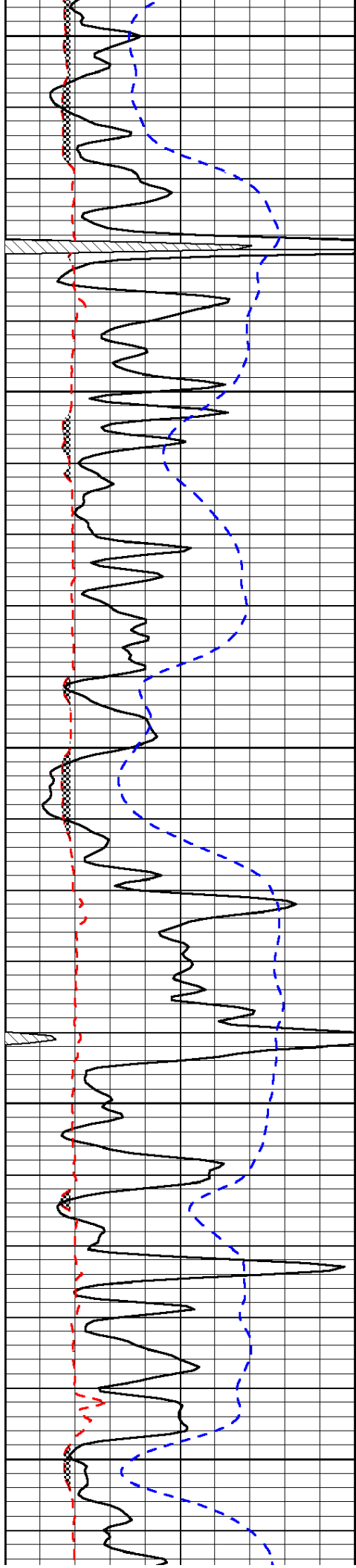


-40

-40

-40

-40



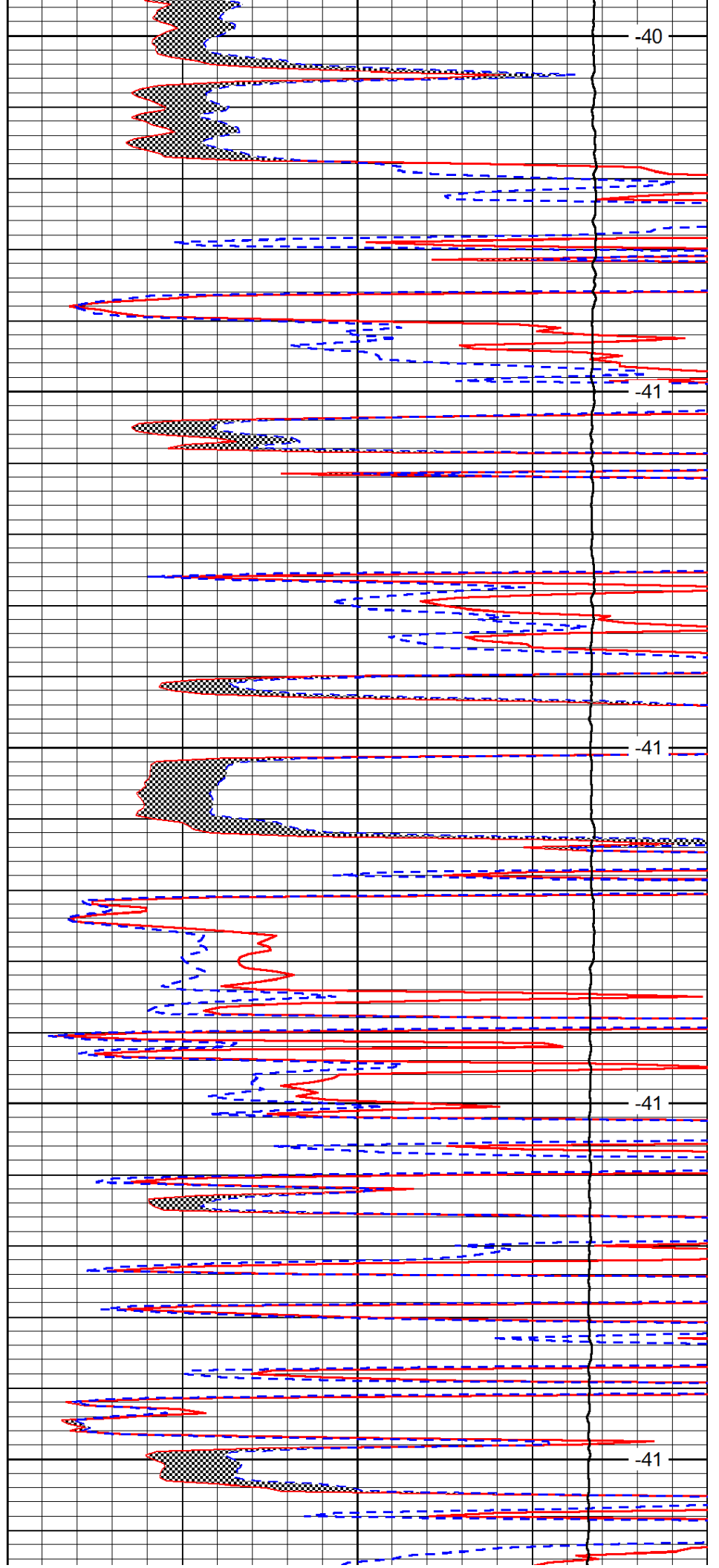
4200

4250

4300

4350

4400



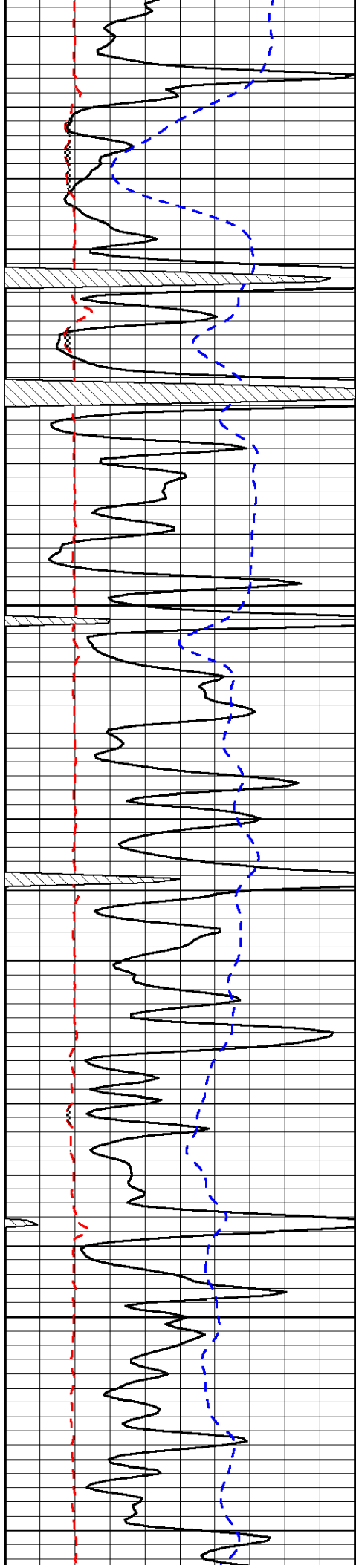
-40

-41

-41

-41

-41

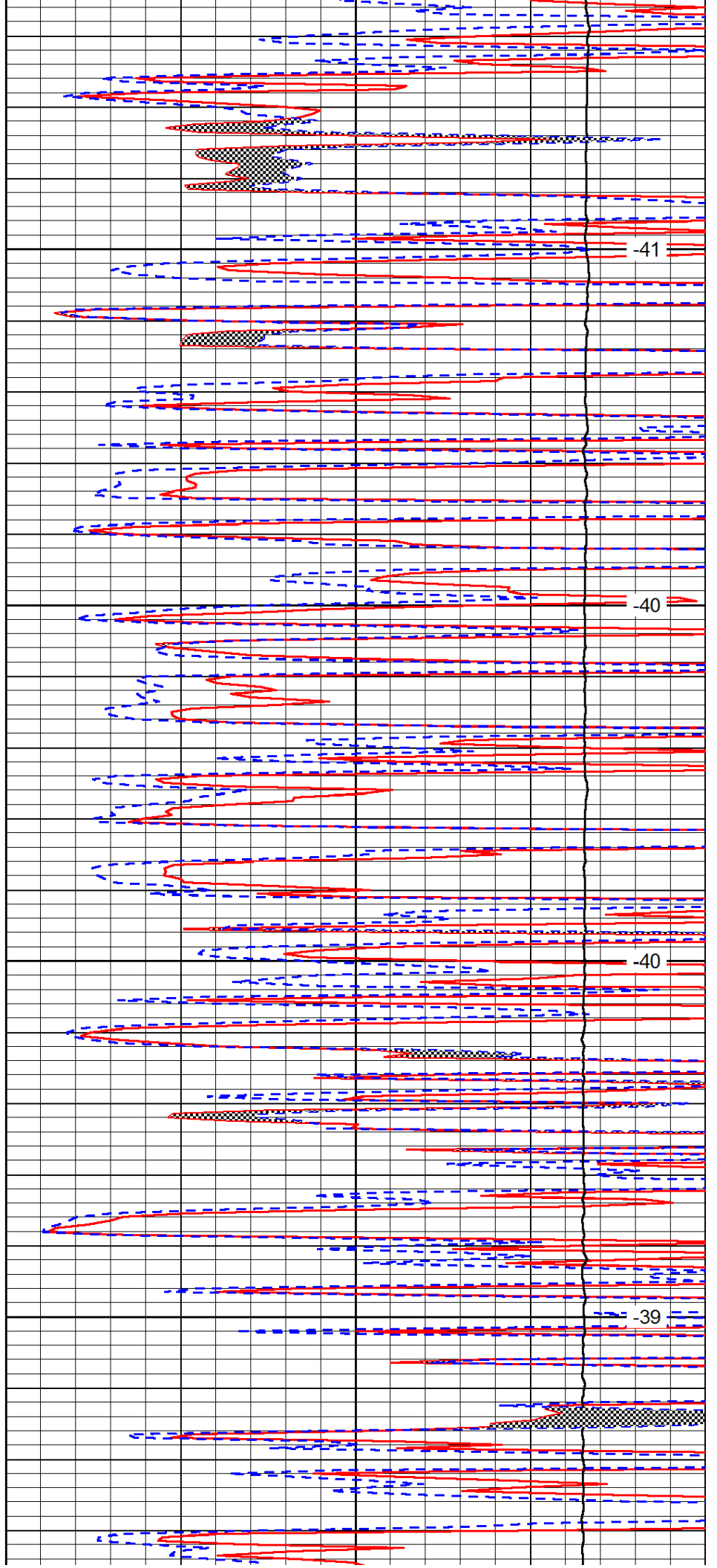


4450

4500

4550

4600

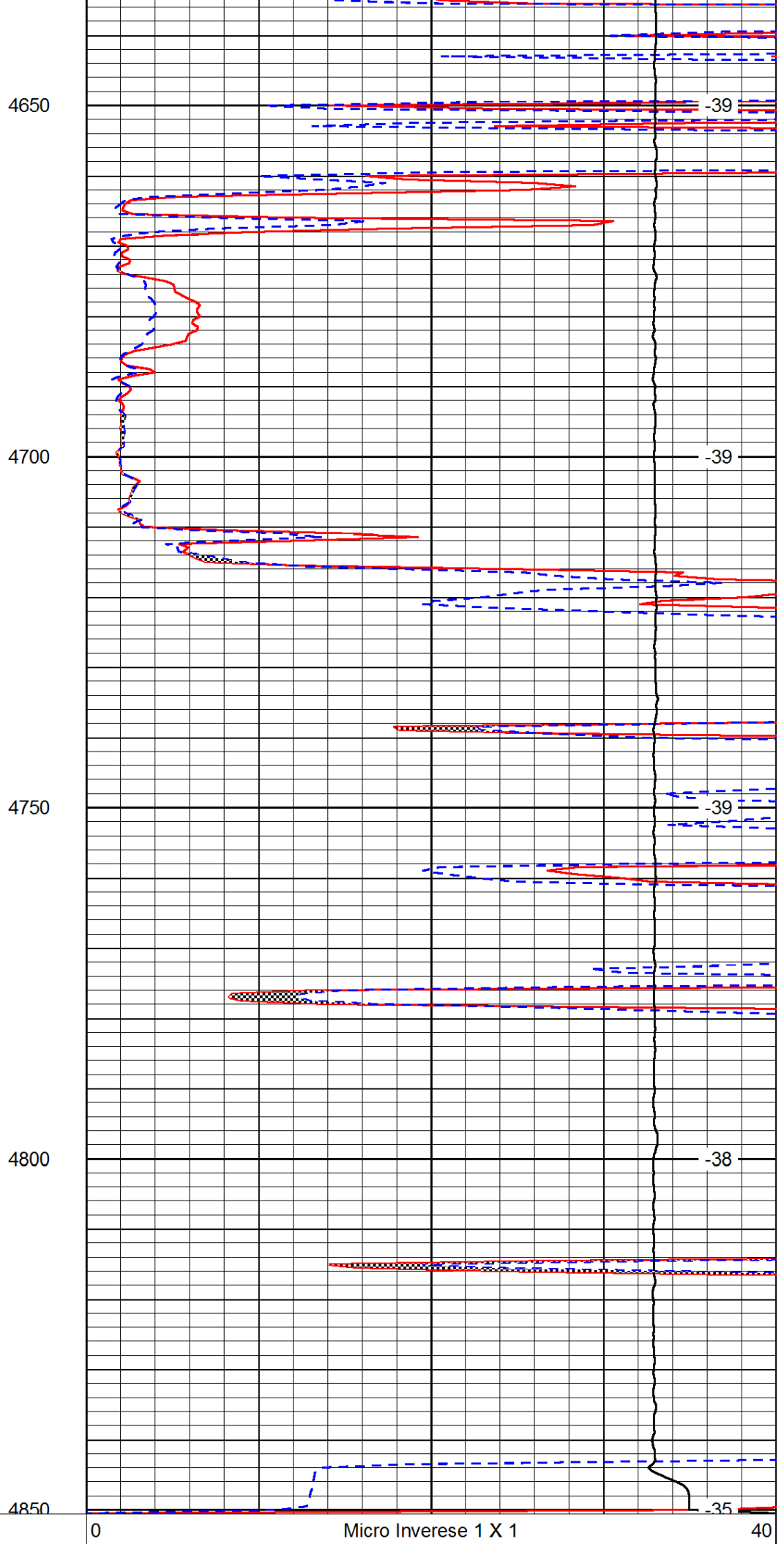
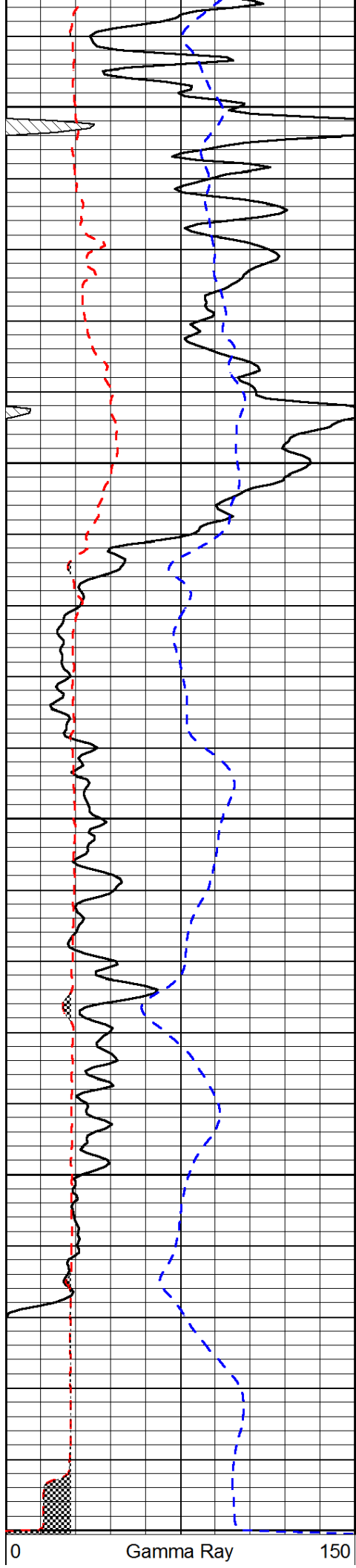


-41

-40

-40

-39



6	Micro Log Caliper (GAPI)	16
-200	SP (mV)	0

0	Micro Normal 2"	40
15000	Line Weight	0

LSPD
