



**GAMMA RAY
CEMENT BOND LOG
COMPLETION LOG**

WILSON, KANSAS
CHAUVEE, KANSAS

Company: POSTROCK ENERGY CORP.
Well: GRADY, JAMES A. #5-5
Field: CHEROKEE BASIN CBM
County: WILSON
State: KANSAS

Location: 1900' FNL & 1300' FNL
SE NE SW NW
API #: 15-205-28079-00-00
Other Services: OPEN HOLE
1-07-2013

Date: 1-15-2013
Run Number: 1107
Depth Logger: 1107
Top Log Interval: 0
Bottom Logged Interval: 1100'
Fluid Level: FULL

Production Casing: WATER
Type Fluid: 5.5' @ TD
Max. Recorded Temp.:
Estimated Cement Top:
Calculated Cement Top:
Amount & Type Cement:
Drilling Contractor:
Equipment Number: 105
Location: GORMLEY R.
Recorded By: MICHELS, J.

Permanant Datum: SEC 5 TWP 28S RGE 17E
Log Measured From: QL
Drilling Measured From: QL
Elevation: 985'
Elevation: 985'
K.B.
G.L. 985'

<<< Fold Here >>>

All interpretations are opinions based on inferences from electrical or other measurements and we cannot and do not guarantee the accuracy or correctness of any interpretation, and we shall not, except in the case of gross or willful negligence on our part, be liable or responsible for any loss, costs, damages, or expenses incurred or sustained by anyone resulting from any interpretation made by any of our officers, agents or employees. These interpretations are also subject to our general terms and conditions set out in our current Price Schedule.

Comments

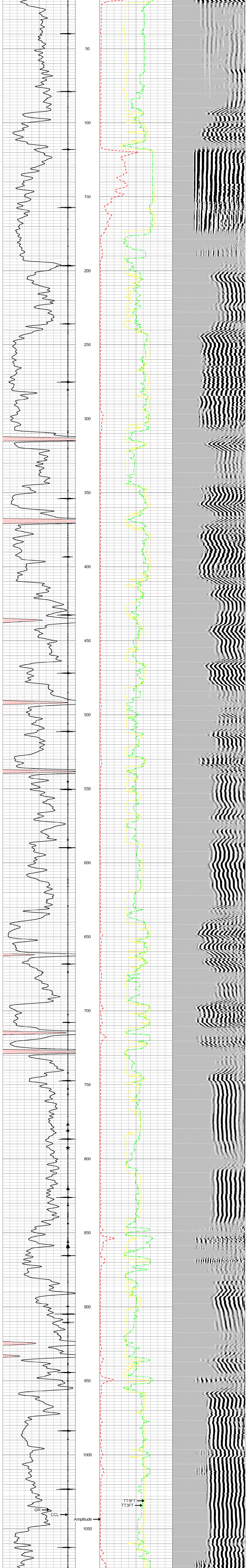
THANK YOU

Sensor	Offset (ft)	Schematic	Description	Len (ft)	OD (in)	Wt (lb)
			tekco tekco cent.	2.17	1.69	5.00
WVF3FT	6.58		CBLTEKCO-TEKCO2RCVR (TEKCO169) 1 1/16" TEKCO 2 RCVR DELWARE	9.75	1.69	50.00
WVF5FT	5.58					
WVFCAL	2.17					
WVFSYNC	2.17		tekco tekco cent.	2.17	1.69	5.00

Dataset: grady james a #5-5.db: field/well/run1/pass2MERGE
Total Length: 14.08 ft
Total Weight: 60.00 lb
O.D.: 1.69 in

Database File: e:\grady james a #5-5.db
Dataset Pathname: pass2MERGE
Presentation Format: scl, dr
Dataset Creation: Tue Jan 15 11:47:31 2013
Charted by: Depth in Feet scaled 1:240

9	CCL	-1	0	Amplitude (mV)	100	300	VDL	1200
0	GR	150	1100	TT3FT (usec)	200			
150	gr	300	1800	TT5FT (usec)	200			



9	CCL	-1	0	Amplitude (mV)	100	300	VDL	1200
0	GR	150	1100	TT3FT (usec)	200			
150	gr	300	1800	TT5FT (usec)	200			