



Pioneer Energy Services

## Dual Compensated Porosity Log

API No. 15-101-22,394-00-00

Company **Larson Engineering, Inc.**  
 Well **Busst Unit No. 1-27**  
 Field **Wildcat**  
 County **Lane** State **Kansas**  
 Location **2540' FSL & 93' FEL**  
 Sec: **27** Twp: **19 S** Rge: **28 W**

Other Services  
DIL/MEL

Elevation  
K.B. 2768  
D.F. 2761  
G.L. 2761

Permanent Datum Ground Level Elevation 2761  
 Log Measured From Kelly Bushing 7 Ft. Above Perm. Datum  
 Drilling Measured From Kelly Bushing

Date	8/5/2012
Run Number	One
Type Log	CNL / CDL
Depth Driller	4700
Depth Logger	4700
Bottom Logged Interval	4679
Top Logged Interval	3600
Type Fluid In Hole	Chemical
Salinity, PPM CL	3200
Density	9.4
Level	Full
Max. Rec. Temp. F	123
Operating Rig Time	4 Hours
Equipment -- Location	17 Hays
Recorded By	D. Martin
Witnessed By	Bob Lewellyn

Borehole Record		Casing Record				
Run No	Bit From	To	Size	Wgt.	From	To
One	12.25	00	240	8.625	23#	240
Two	7.875	240	TD			

<<< Fold Here >>>

All interpretations are opinions based on inferences from electrical or other measurements and we cannot and do not guarantee the accuracy or correctness of any interpretation, and we shall not, except in the case of gross or willful negligence on our part, be liable or responsible for any loss, costs, damages, or expenses incurred or sustained by anyone resulting from any interpretation made by any of our officers, agents or employees. These interpretations are also subject to our general terms and conditions set out in our current Price Schedule.

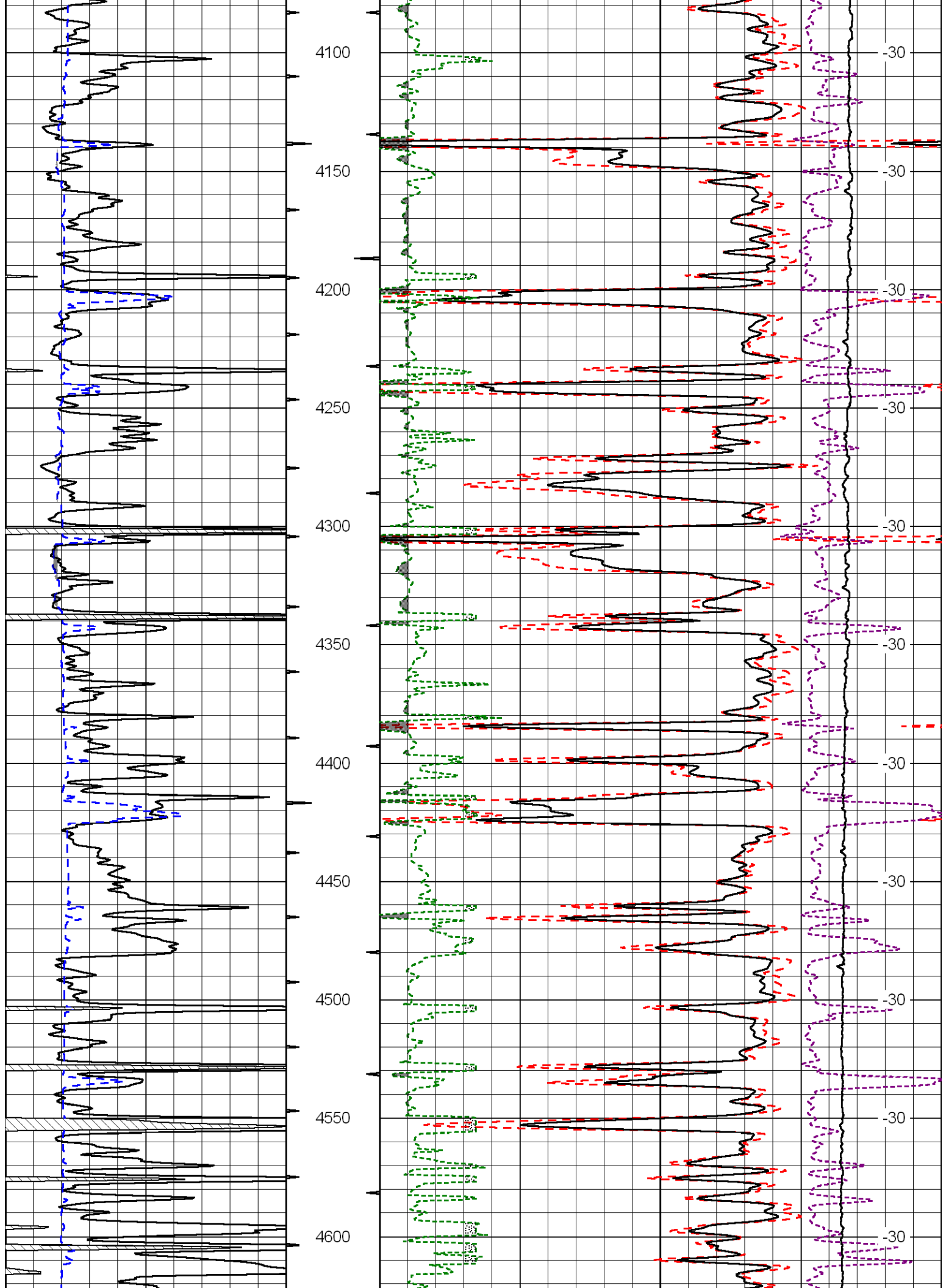
Comments

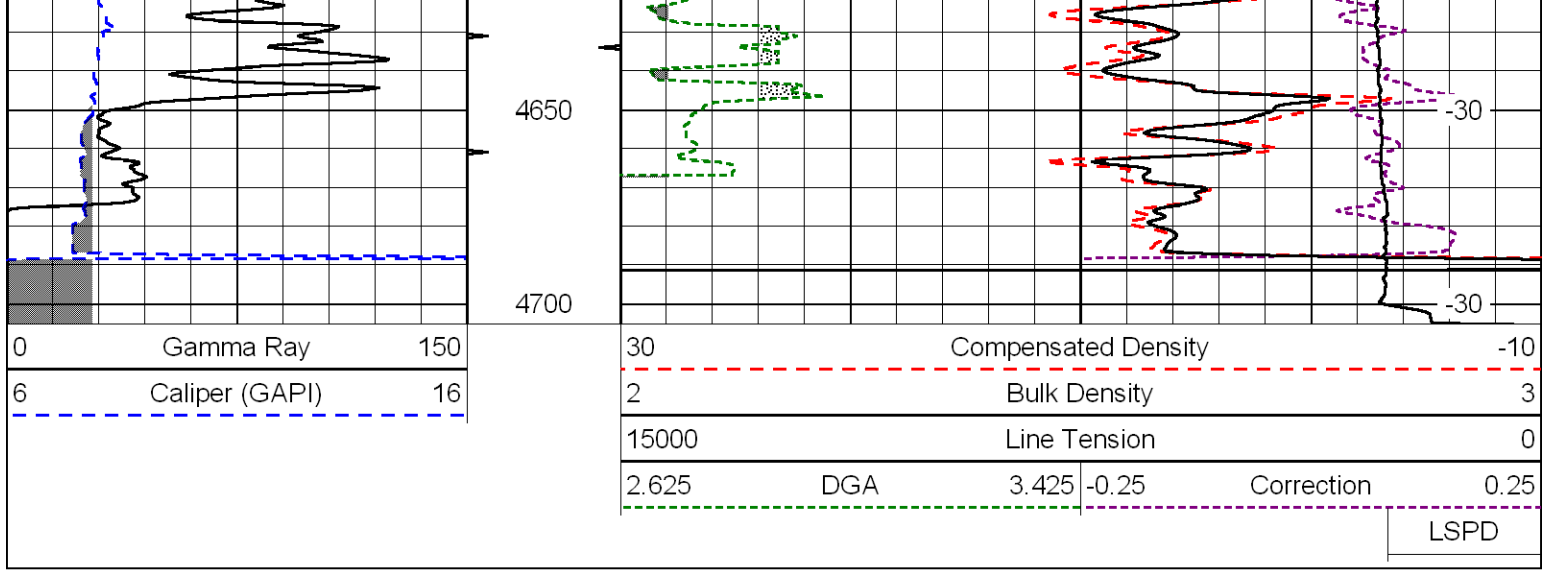
Thank you for using Log-Tech, Inc.  
 (785) 625-3858

Dighton, KS  
 8 S to Rd. 70, 4 E,  
 3/4 N, W Into

Database File: larshd.db  
 Dataset Pathname: DIL/larstk  
 Presentation Format: cdl  
 Dataset Creation: Sun Aug 05 03:11:40 2012  
 Charted by: Depth in Feet scaled 1:600







Database File: larshd.db  
 Dataset Pathname: DIL/larstk  
 Presentation Format: cndlspec  
 Dataset Creation: Sun Aug 05 03:11:40 2012  
 Charted by: Depth in Feet scaled 1:240

