



Pioneer Energy Services

Microresistivity Log

API No.	15-101-22,394-00-00	
Company	Larson Engineering, Inc.	
Well	Busst Unit No. 1-27	
Field	Wildcat	
County	Lane	State
Location	2540' FSL & 93' FEL	
	Sec: 27	Twp: 19 S Rge: 28 W
Permanent Datum	Ground Level	Elevation 2761
Log Measured From	Kelly Bushing	7 Ft. Above Perm. Datum
Drilling Measured From	Kelly Bushing	
		Other Services CNL/CDL DIL
		Elevation K.B. 2768 D.F. G.L. 2761

Date	8/5/2012
Run Number	Two
Depth Driller	4700
Depth Logger	4700
Bottom Logged Interval	4699
Top Log Interval	3600
Casing Driller	8.625 @ 240
Casing Logger	257
Bit Size	7.875
Type Fluid in Hole	Chemical
Salinity, ppm CL	3200
Density / Viscosity	9.4 53
pH / Fluid Loss	10.0 9.2
Source of Sample	Flowline
Rm @ Meas. Temp	.86 @ 67
Rmf @ Meas. Temp	.65 @ 67
Rmc @ Meas. Temp	1.16 @ 67
Source of Rmf / Rmc	Charts
Rm @ BHT	.47 @ 123
Operating Rig Time	4 Hours
Max Rec. Temp. F	123
Equipment Number	17
Location	Hays
Recorded By	D. Martin
Witnessed By	Bob Lewellvn

<<< Fold Here >>>

All interpretations are opinions based on inferences from electrical or other measurements and we cannot and do not guarantee the accuracy or correctness of any interpretation, and we shall not, except in the case of gross or willful negligence on our part, be liable or responsible for any loss, costs, damages, or expenses incurred or sustained by anyone resulting from any interpretation made by any of our officers, agents or employees. These interpretations are also subject to our general terms and conditions set out in our current Price Schedule.

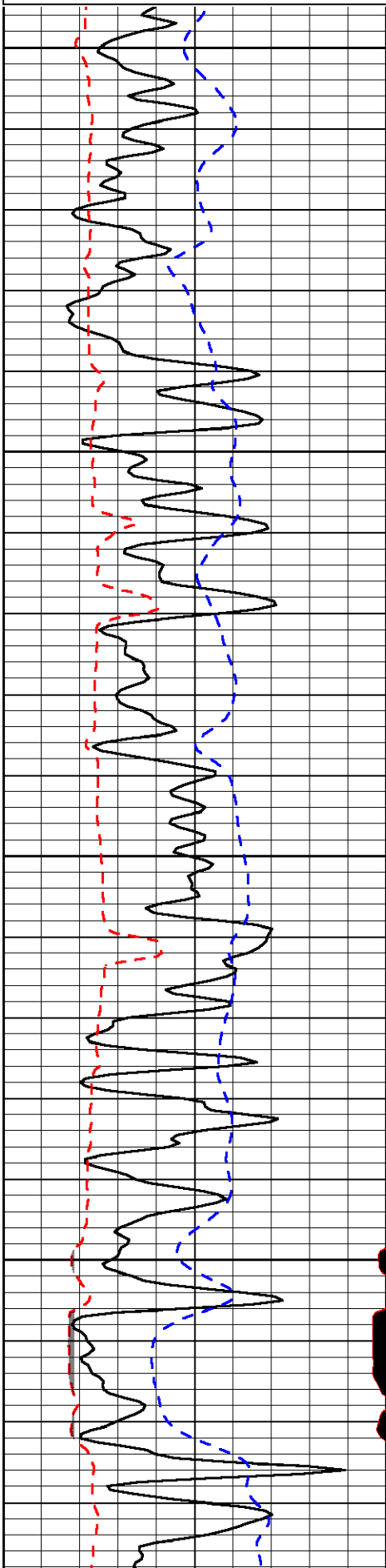
Comments

Thank you for using Log-Tech, Inc.
 (785) 625-3858
 Dighton, KS
 8 S to Rd. 70, 4 E,
 3/4 N, W Into

Database File: larshd.db
 Dataset Pathname: DIL/larstk
 Presentation Format: micro
 Dataset Creation: Sun Aug 05 03:11:40 2012
 Charted by: Depth in Feet scaled 1:240

0	Gamma Ray	150
6	MCAL (GAPI)	16
2.875	Mud Cake (GAPI)	7.875
-200	SP	0

0	Micro Inverse 1 X 1	40
0	Micro Normal 2"	40
10000	Line Weight	0
		LSPD

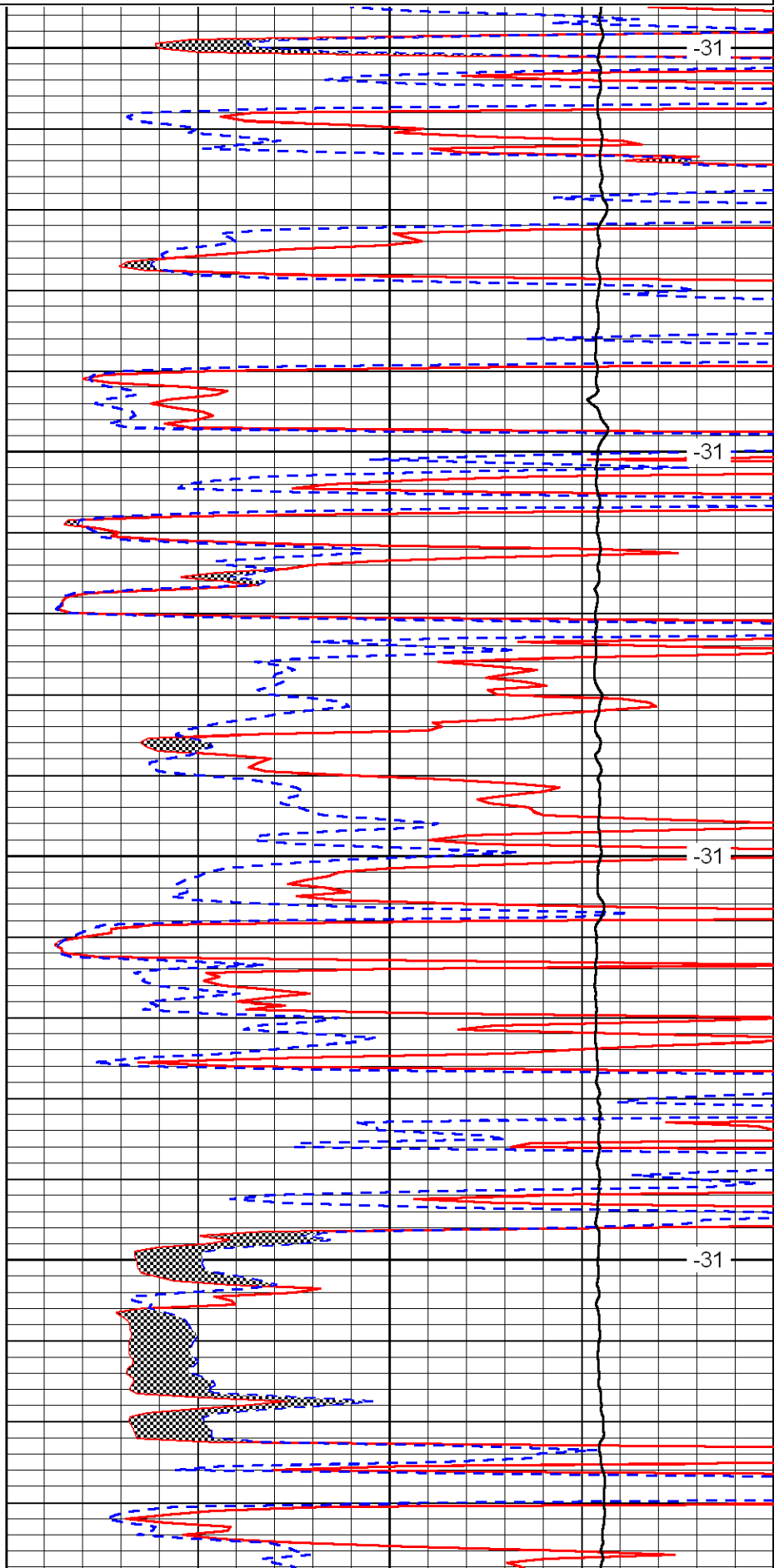


3600

3650

3700

3750

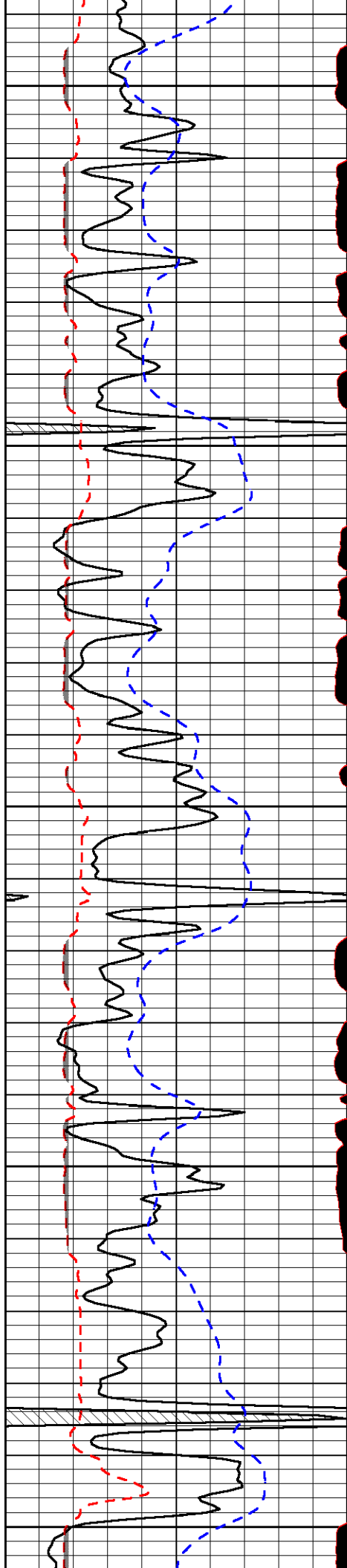


-31

-31

-31

-31



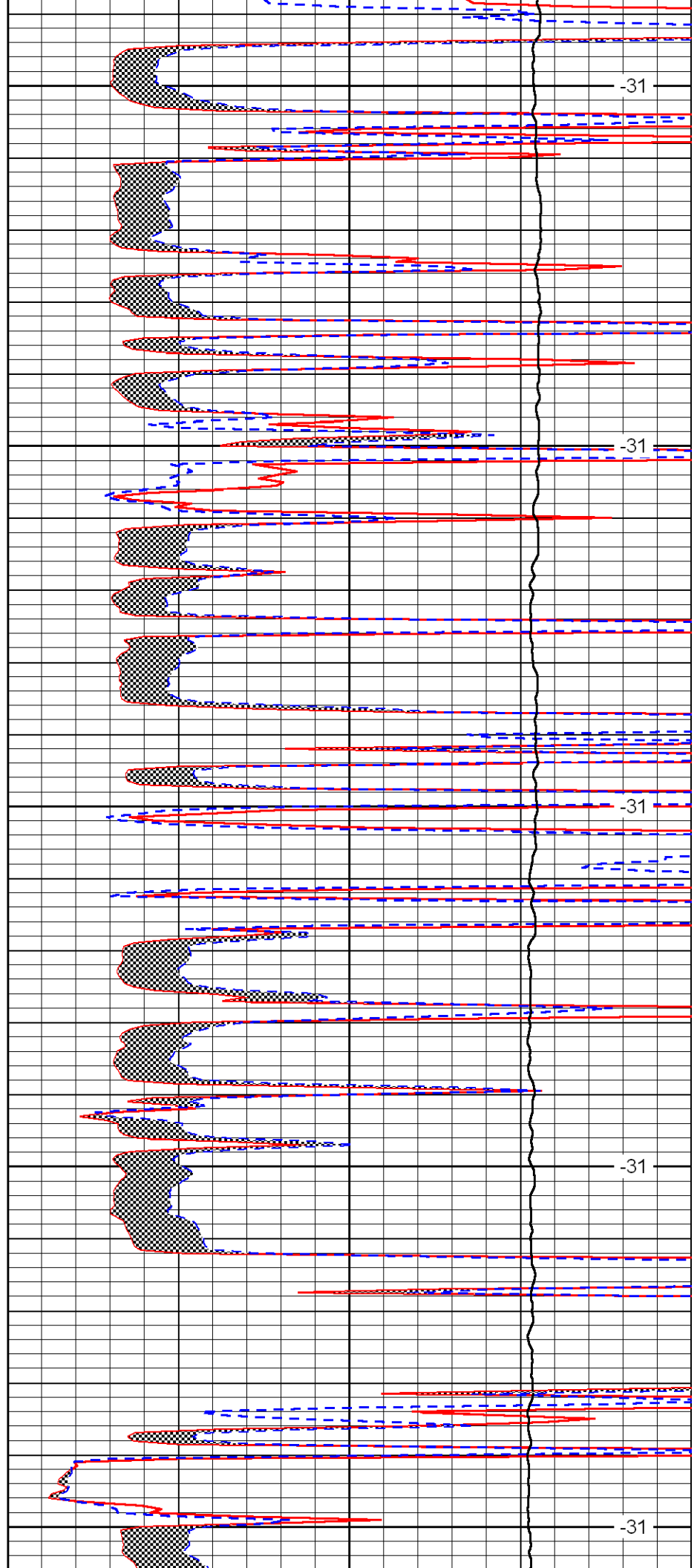
3800

3850

3900

3950

4000



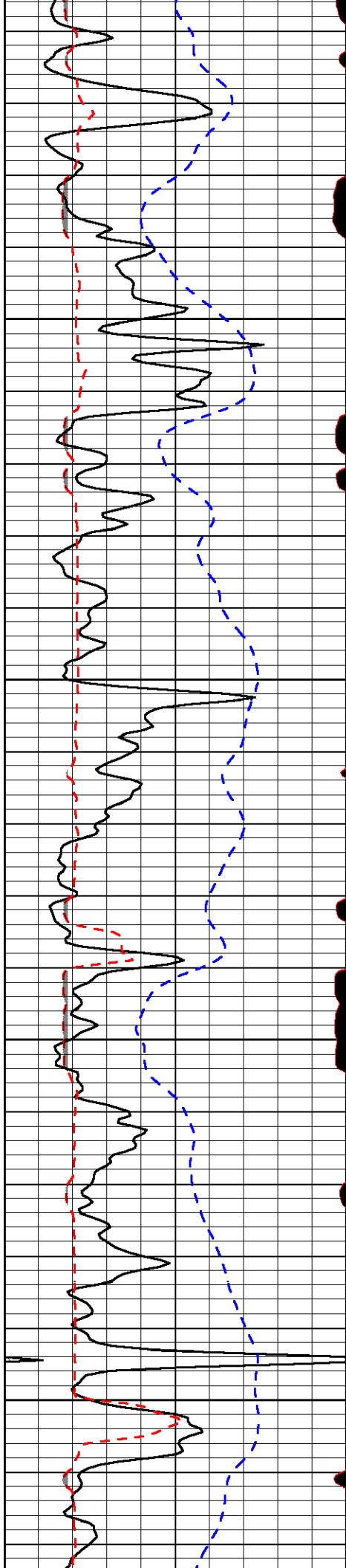
-31

-31

-31

-31

-31

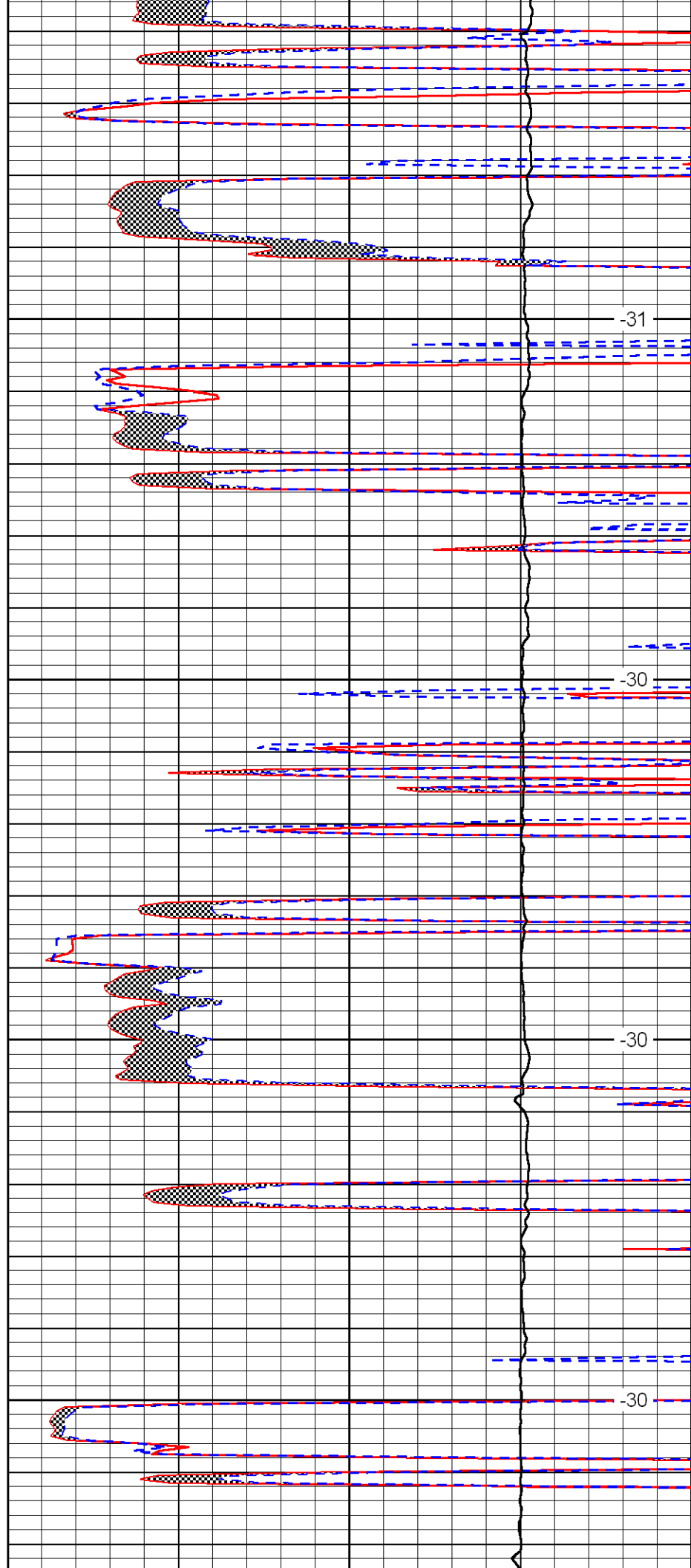


4050

4100

4150

4200

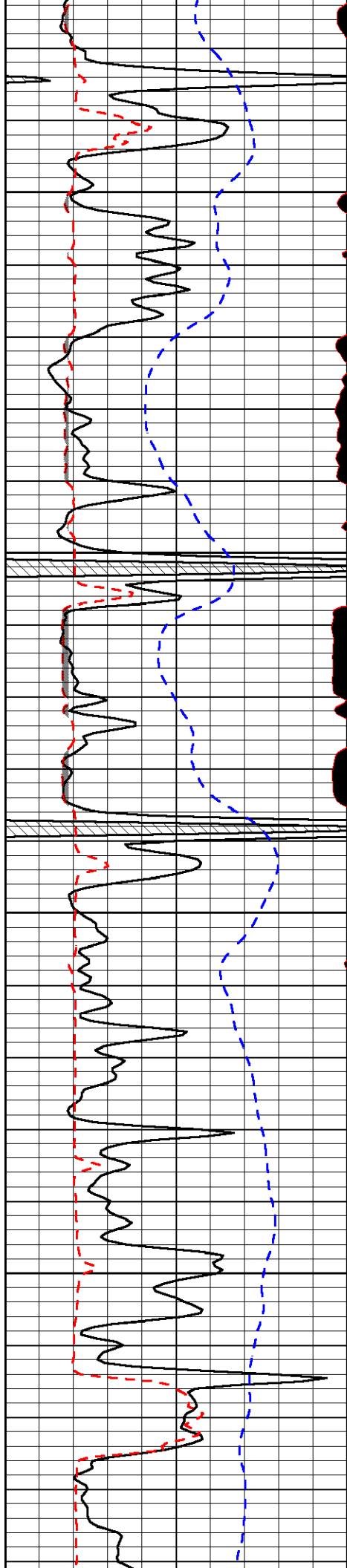


-31

-30

-30

-30

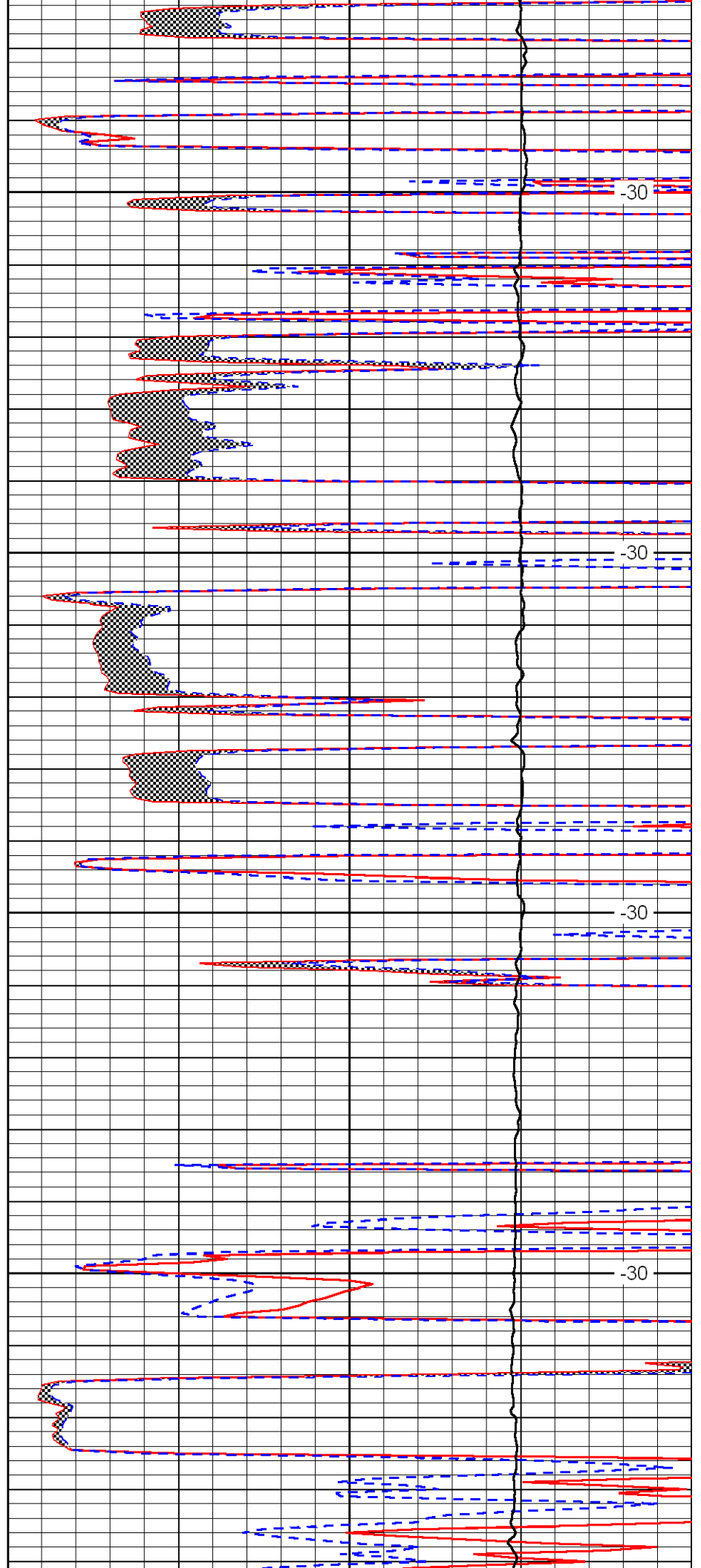


4250

4300

4350

4400

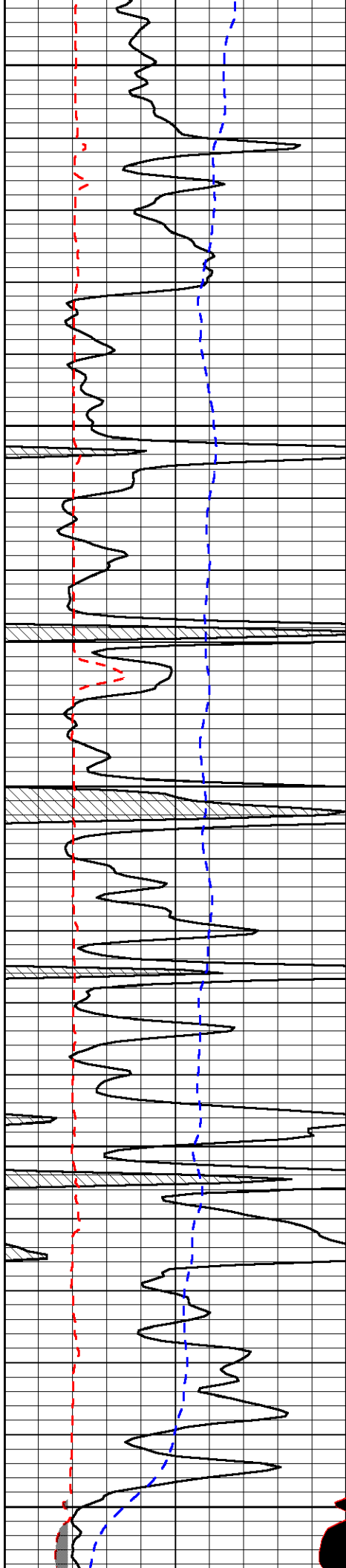


-30

-30

-30

-30



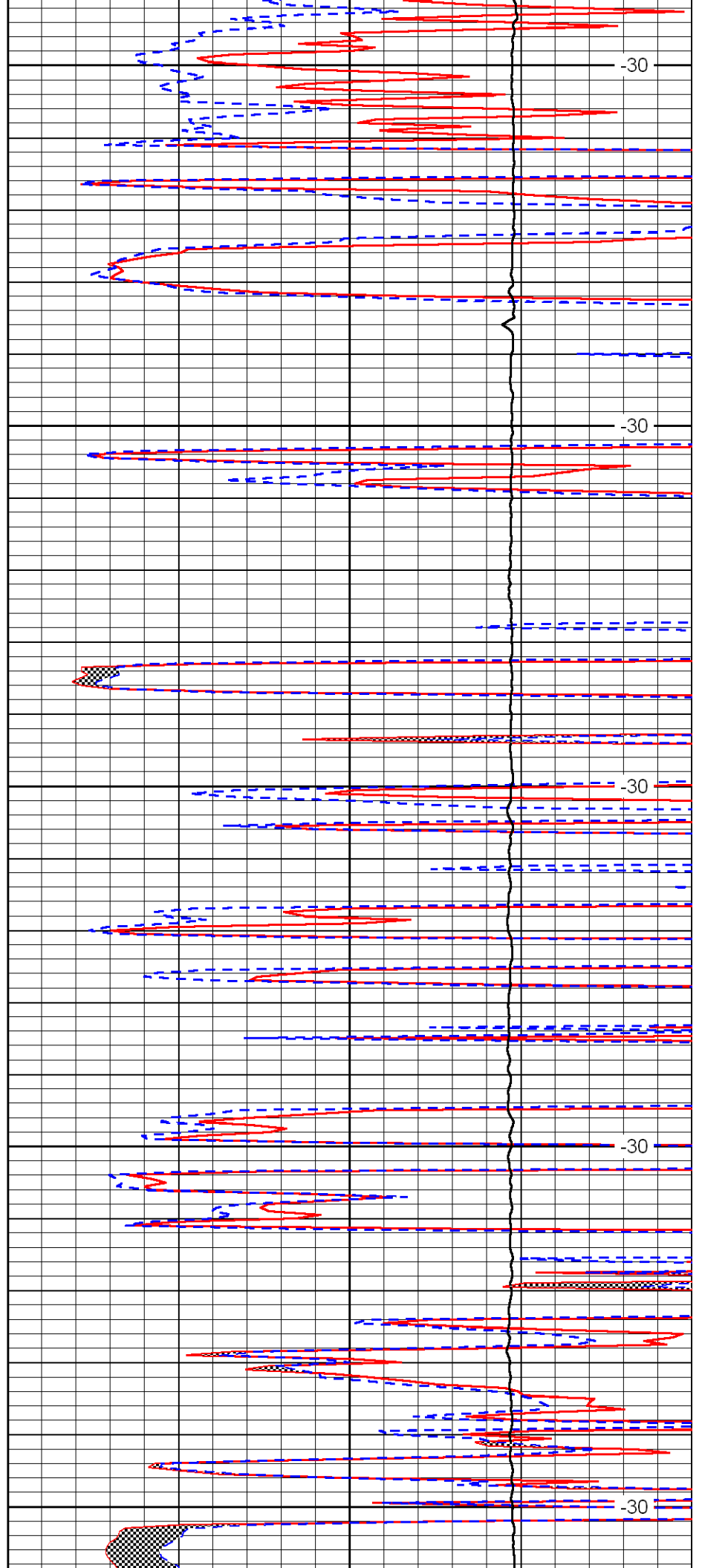
4450

4500

4550

4600

4650



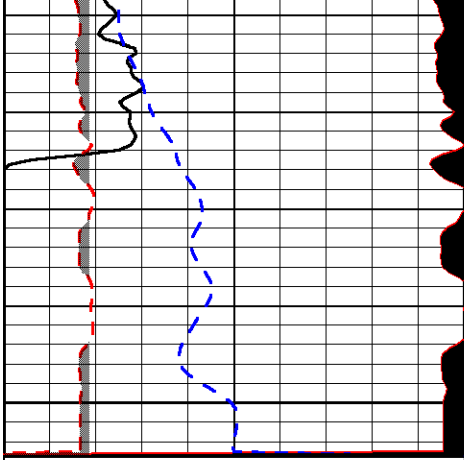
-30

-30

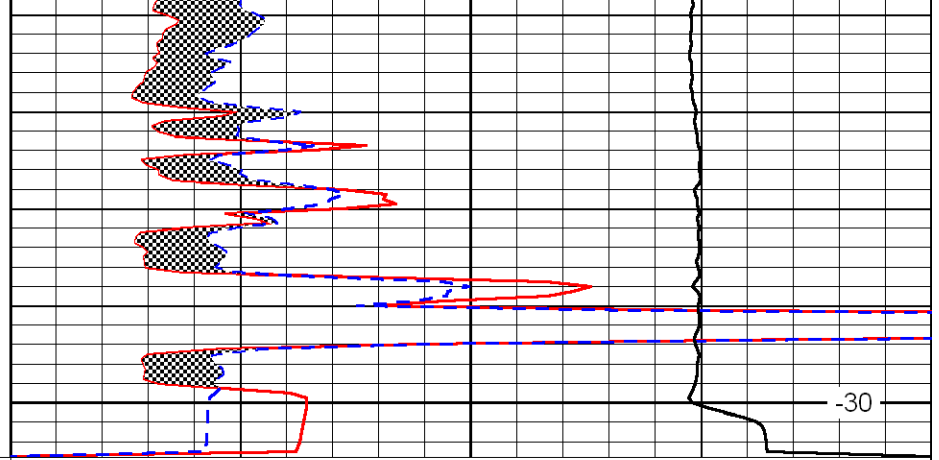
-30

-30

-30



4700



-30

0	Gamma Ray	150
6	MCAL (GAPI)	16
2.875	Mud Cake (GAPI)	7.875
-200	SP	0

0	Micro Inverse 1 X 1	40
0	Micro Normal 2''	40
10000	Line Weight	0

LSPD