



Dual Compensated  
Porosity Log

DIGITAL LOG (785) 625-3858

15-083-21,736-00-00

API No.

Company **Becker Oil Corporation**  
 Well **Bach No. 1**  
 Field **N/A**  
 County **Hodgeman** State **Kansas**

Location **SW NE SE**  
**1650' FSL & 990' FEL:**  
 Sec: **11** Twp: **24 S** Rge: **24 W**

Permanent Datum **Ground Level** Elevation **2478**  
 Log Measured From **Kelly Bushing** **7** Ft. Above Perm. Datum  
 Drilling Measured From **Kelly Bushing**

Other Services  
**DIL**  
 Elevation  
**K.B. 2485**  
**D.F. 2478**  
**G.L. 2478**

Date	1/13/2012	
Run Number	One	
Type Log	CNL / CDL	
Depth Driller	4891	
Depth Logger	4890	
Bottom Logged Interval	4869	
Top Logged Interval	2550	
Type Fluid In Hole	Chemical	
Salinity, PPM CL	7.400	
Density	9.3	
Level	Full	
Max. Rec. Temp. F	127	
Operating Rig Time	3 1/2 Hours	
Equipment -- Location	91 Hays	
Recorded By	K. Bange	
Witnessed By	Clyde Becker	

Borehole Record				Casing Record			
Run No.	Bit	From	To	Size	Wgt.	From	To
1	12.25	00	259	8.625	24#	00	259
2	7.875	259	4891				

<<< Fold Here >>>

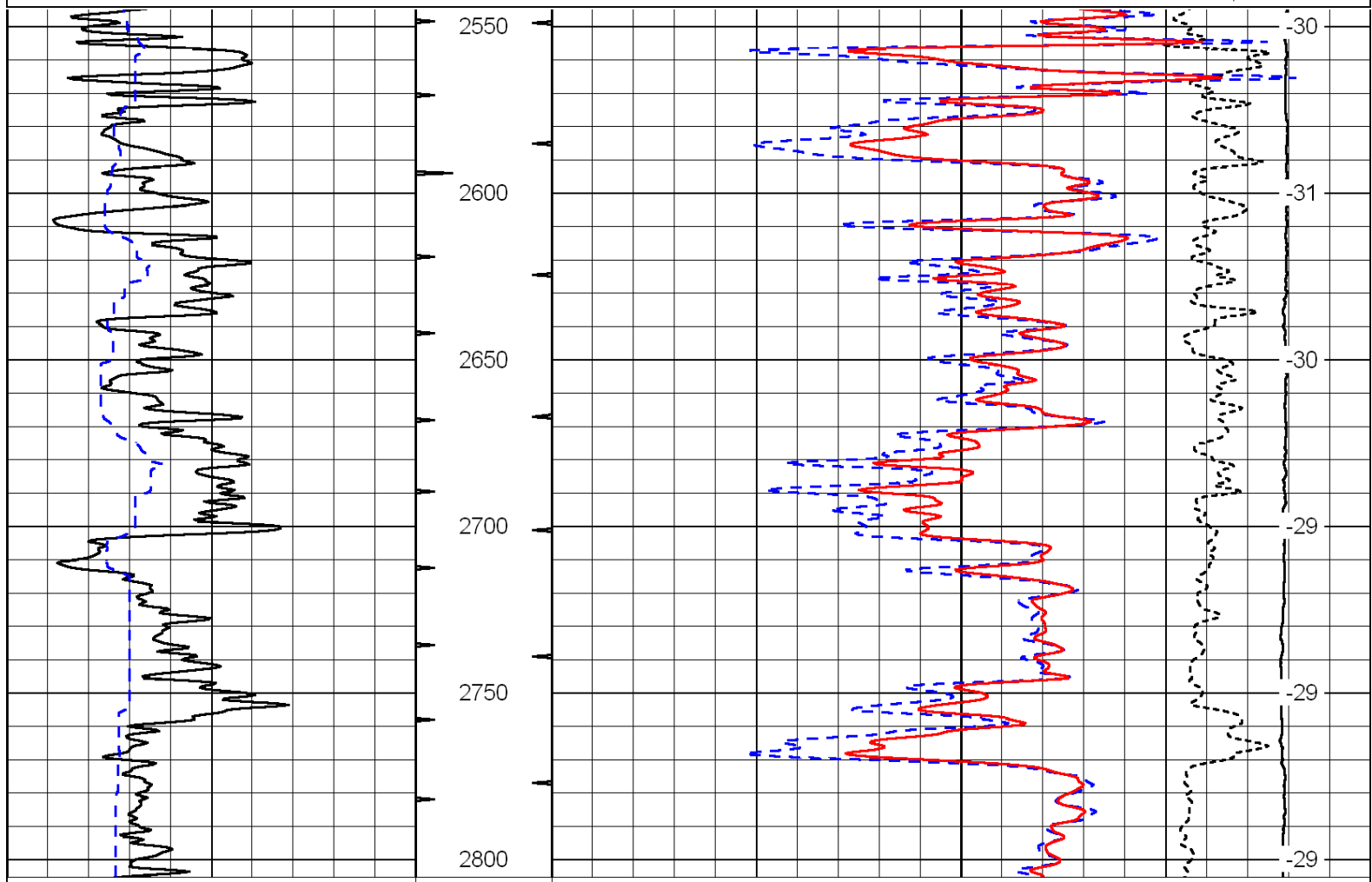
All interpretations are opinions based on inferences from electrical or other measurements and we cannot and do not guarantee the accuracy or correctness of any interpretation, and we shall not, except in the case of gross or willful negligence on our part, be liable or responsible for any loss, costs, damages, or expenses incurred or sustained by anyone resulting from any interpretation made by any of our officers, agents or employees. These interpretations are also subject to our general terms and conditions set out in our current Price Schedule.

Comments

Thank you for using Log-Tech, Inc.  
 (785) 625-3858  
 Jetmore KS, 7 S to F rd  
 1 W, 3/4 S, W into

0	Gamma Ray	150
6	Caliper (GAPI)	16

30	Compensated Density	-10
2	Bulk Density	3
15000	Line Tension	0
-0.25	Correction	0.25
LSPD		



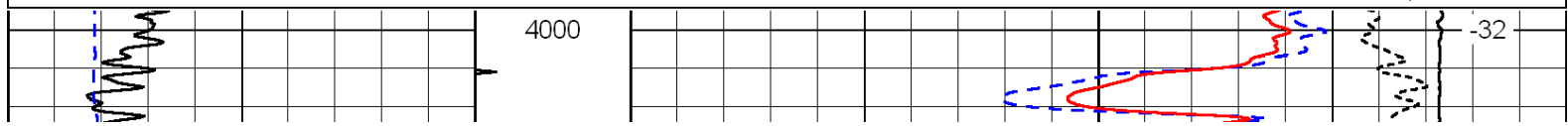
0	Gamma Ray	150
6	Caliper (GAPI)	16

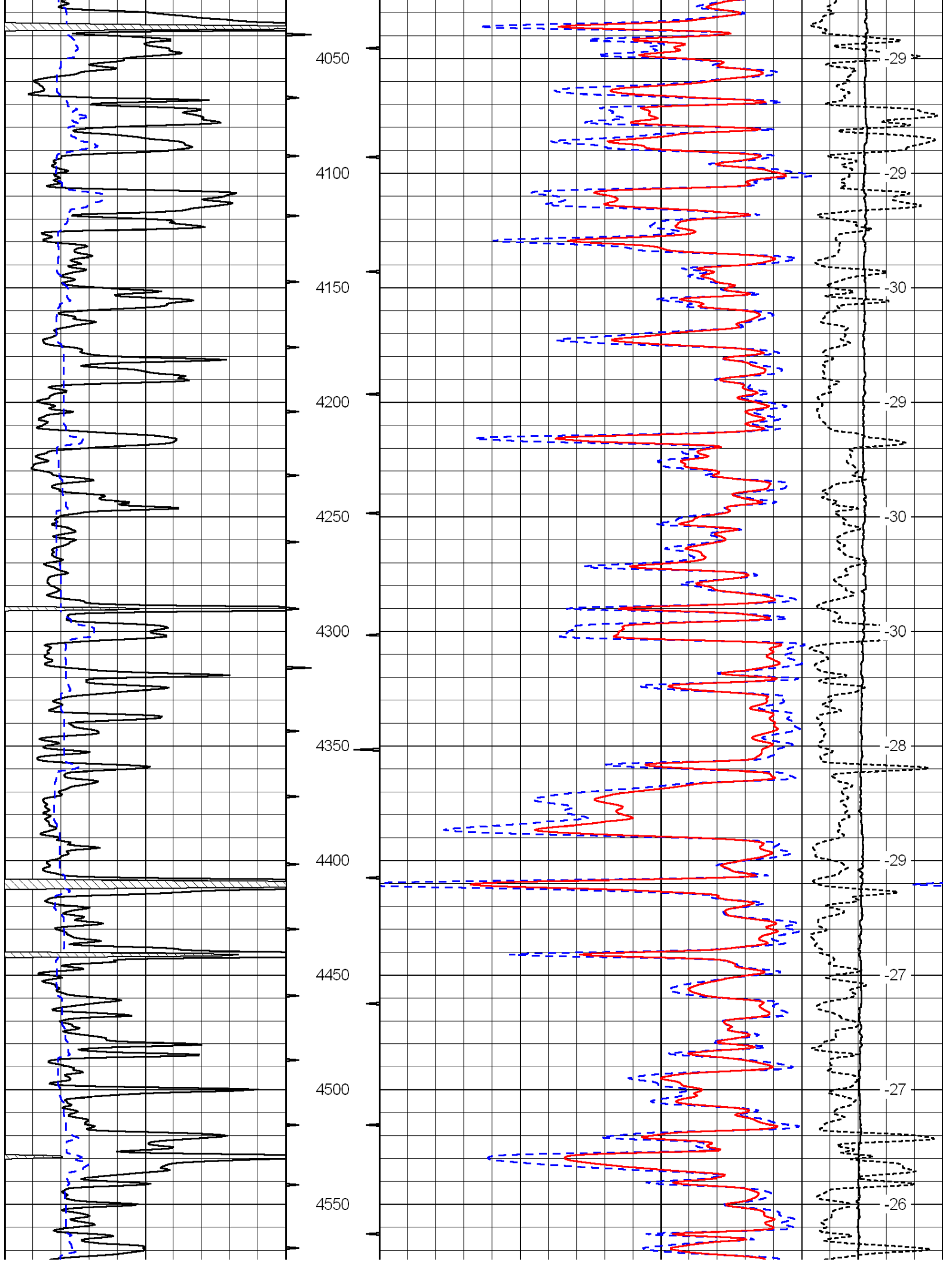
30	Compensated Density	-10
2	Bulk Density	3
15000	Line Tension	0
-0.25	Correction	0.25
LSPD		

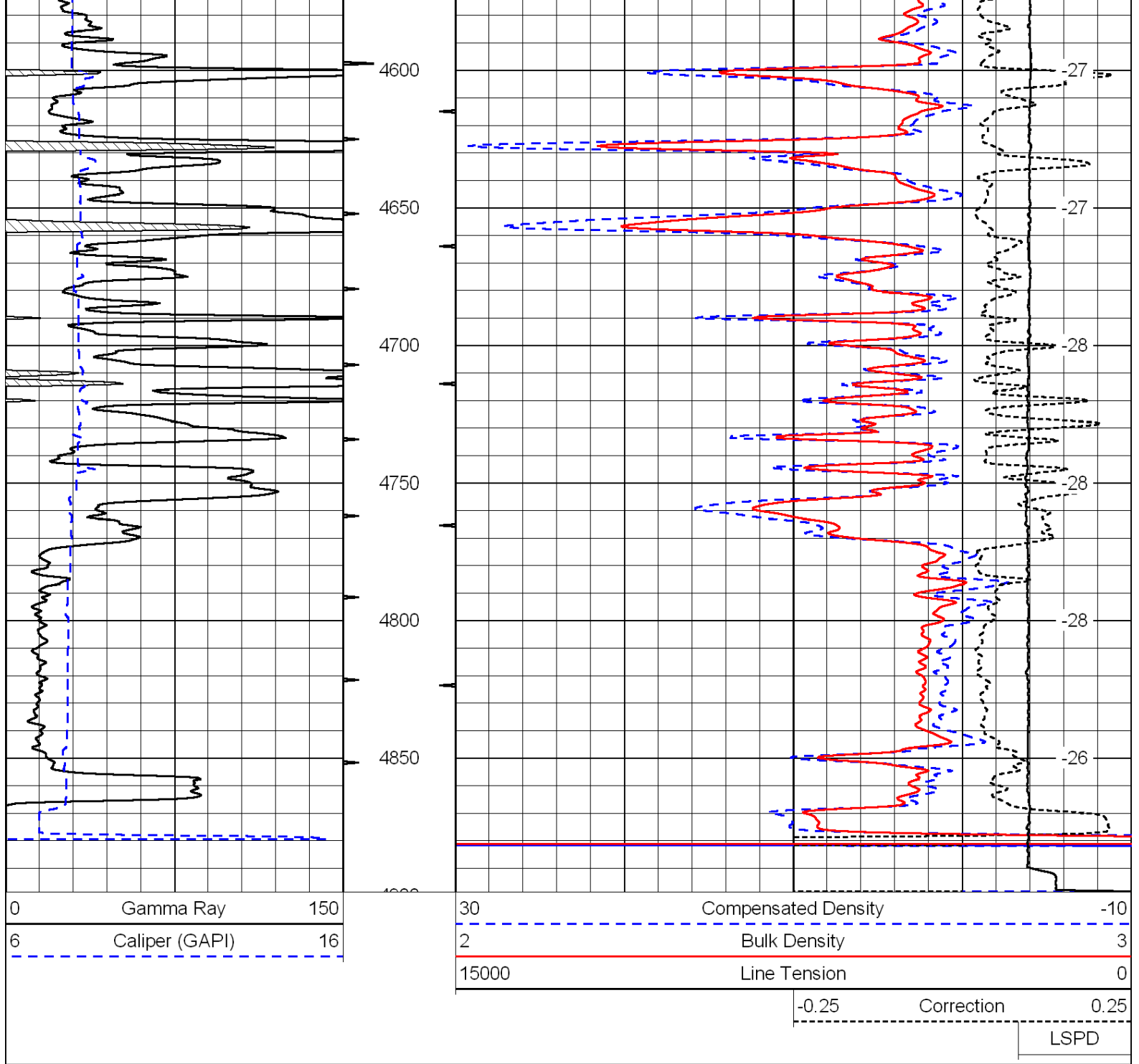
Database File: c:\warrior\data\becker\_bach no. 1\becker011312hd.db  
 Dataset Pathname: dil/@00000e60  
 Presentation Format: cdl  
 Dataset Creation: Fri Jan 13 23:40:53 2012  
 Charted by: Depth in Feet scaled 1:600

0	Gamma Ray	150
6	Caliper (GAPI)	16

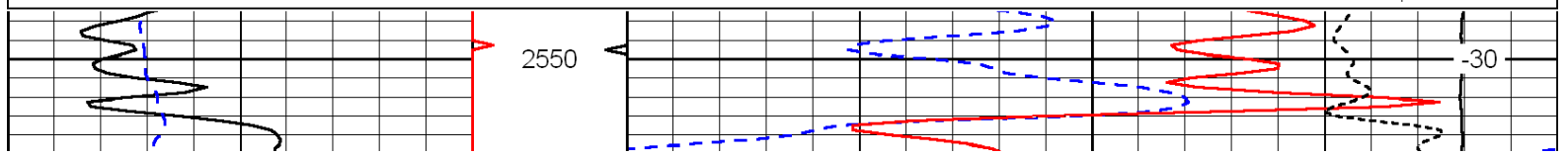
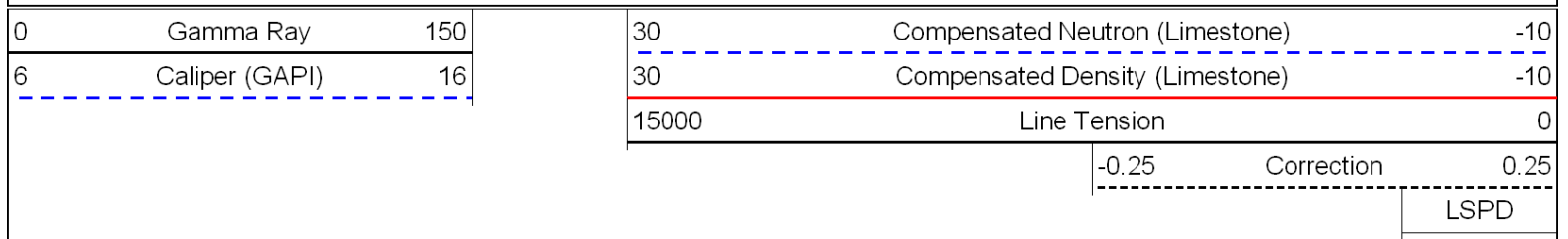
30	Compensated Density	-10
2	Bulk Density	3
15000	Line Tension	0
-0.25	Correction	0.25
LSPD		

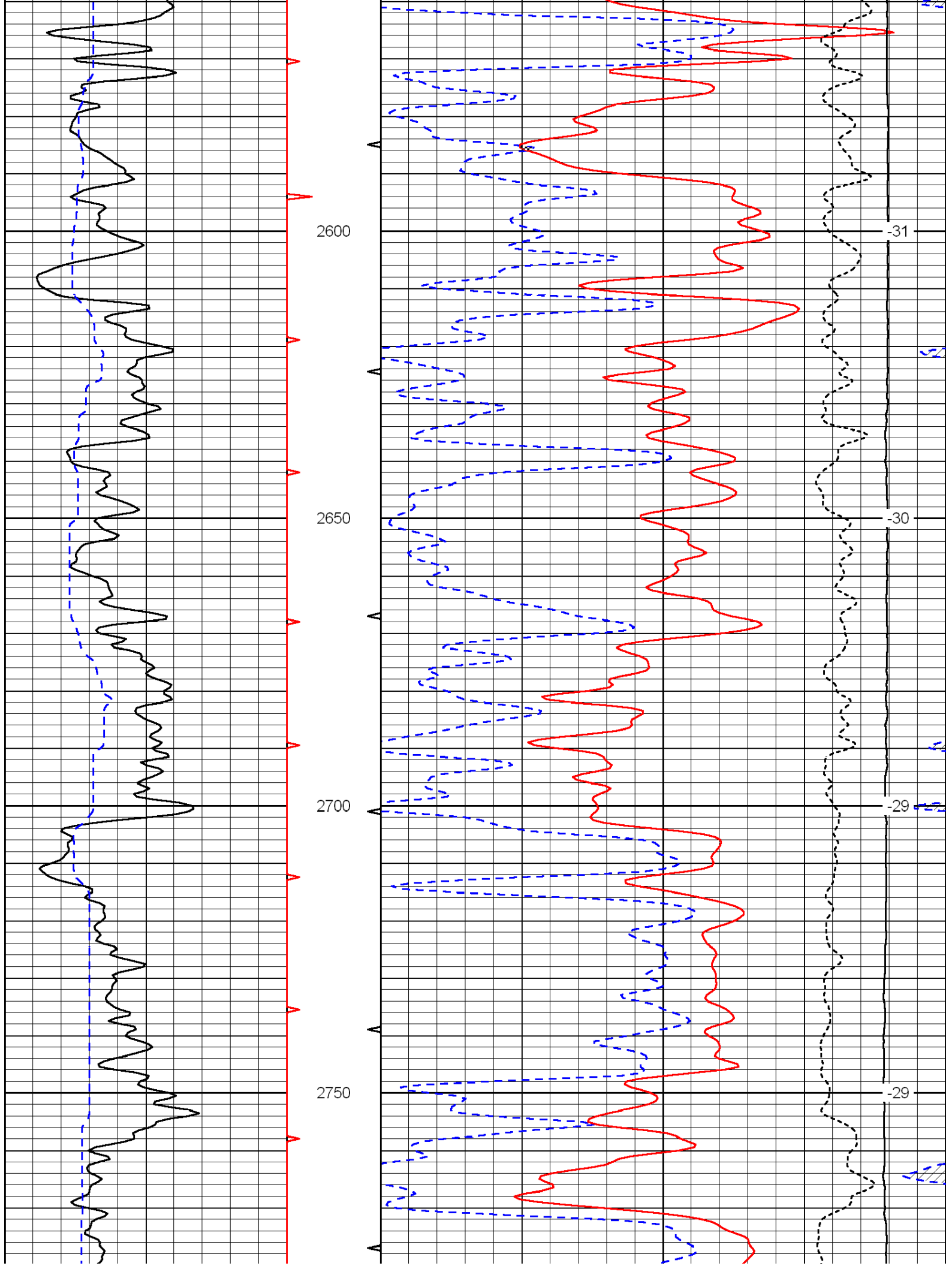


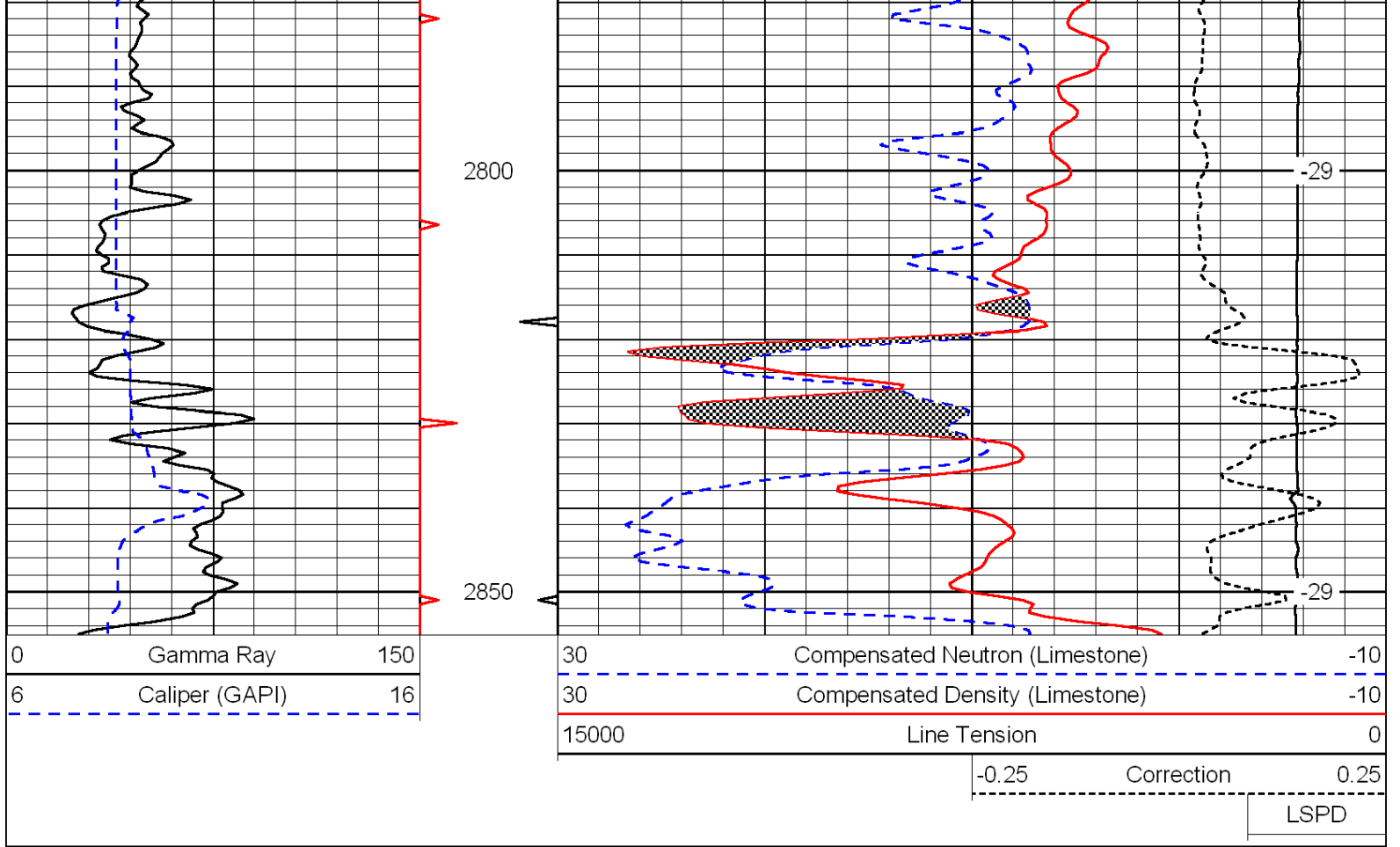




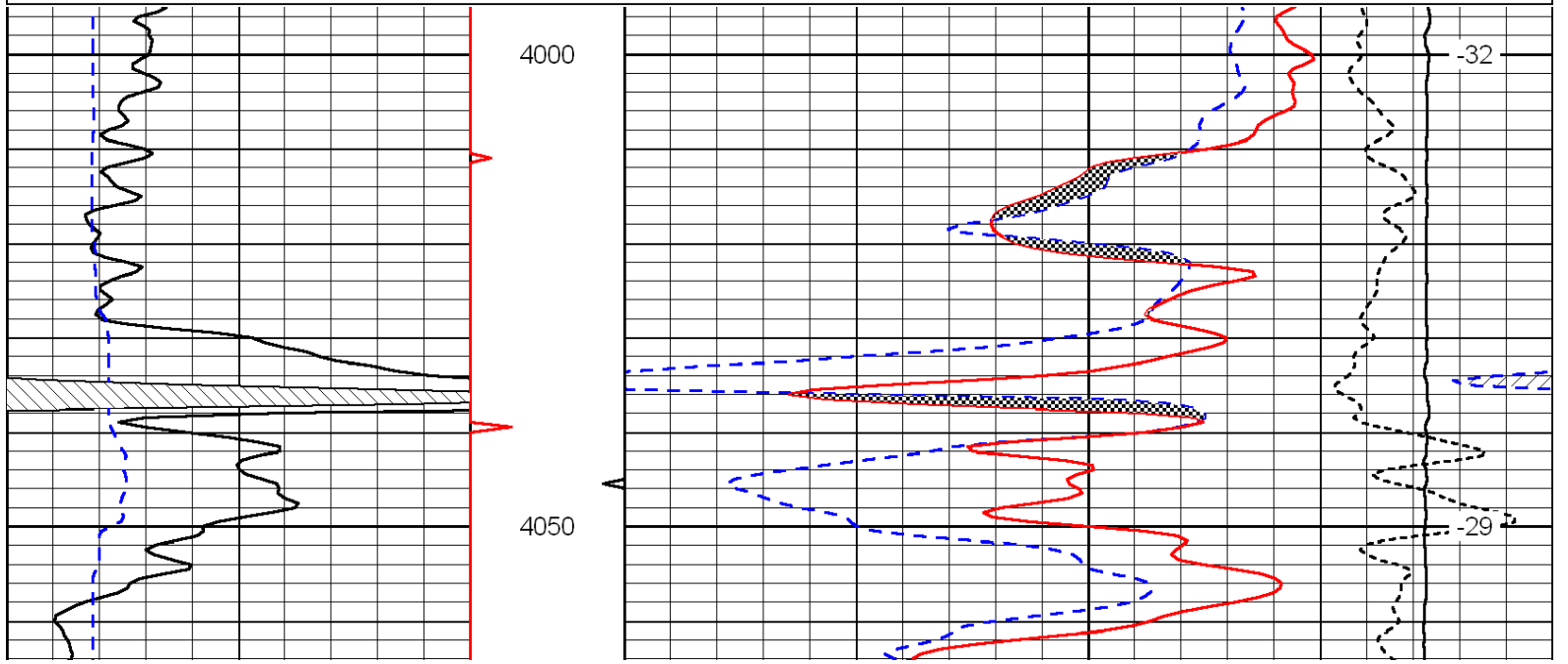
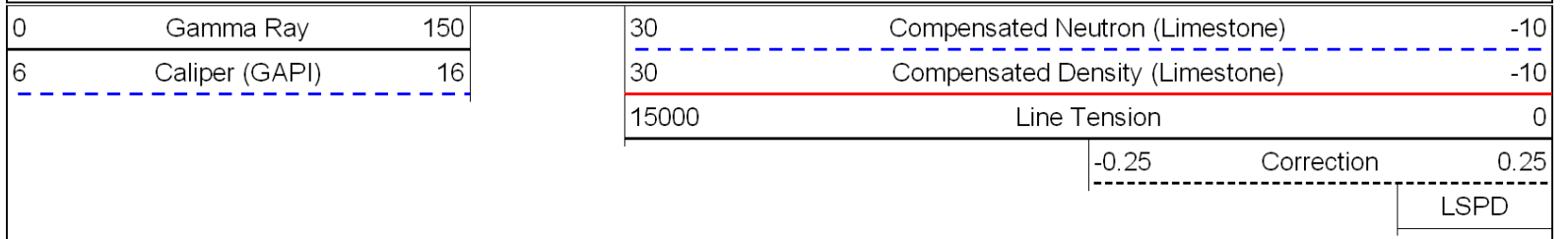
Database File: c:\warrior\data\becker\_bach no. 1\becker011312hd.db  
 Dataset Pathname: dil/@00000e60  
 Presentation Format: cndlspec  
 Dataset Creation: Fri Jan 13 23:40:53 2012  
 Charted by: Depth in Feet scaled 1:240

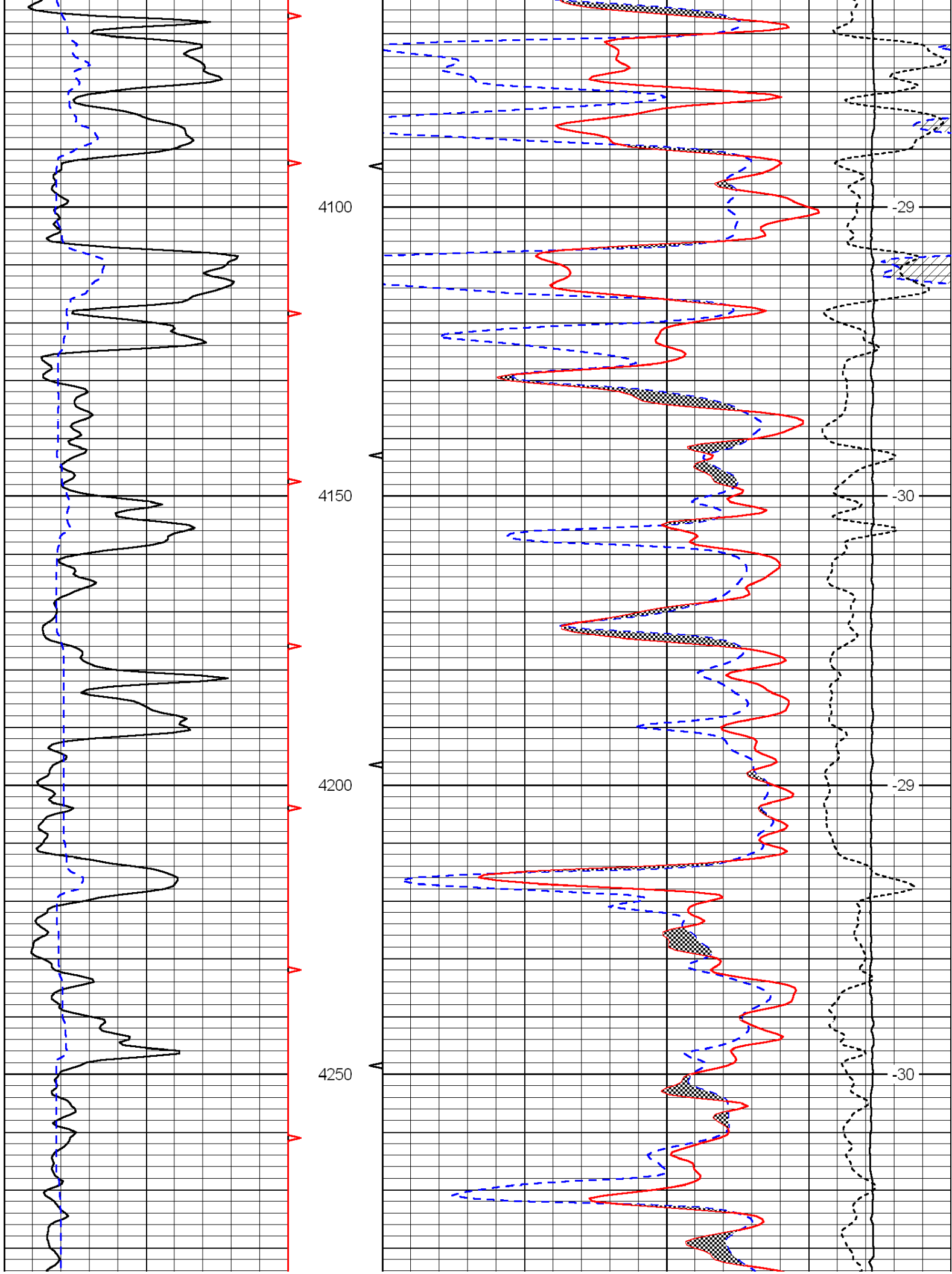


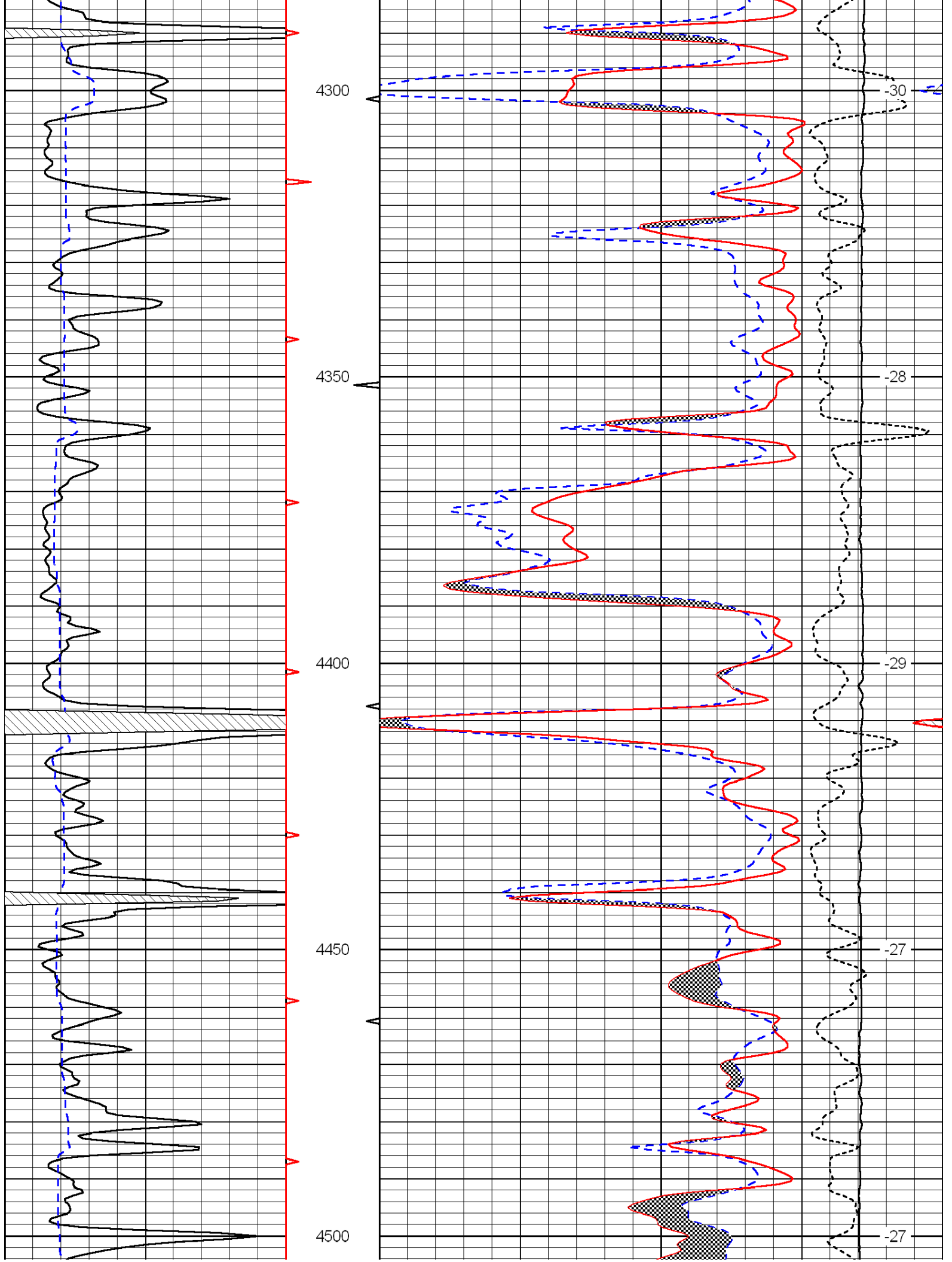


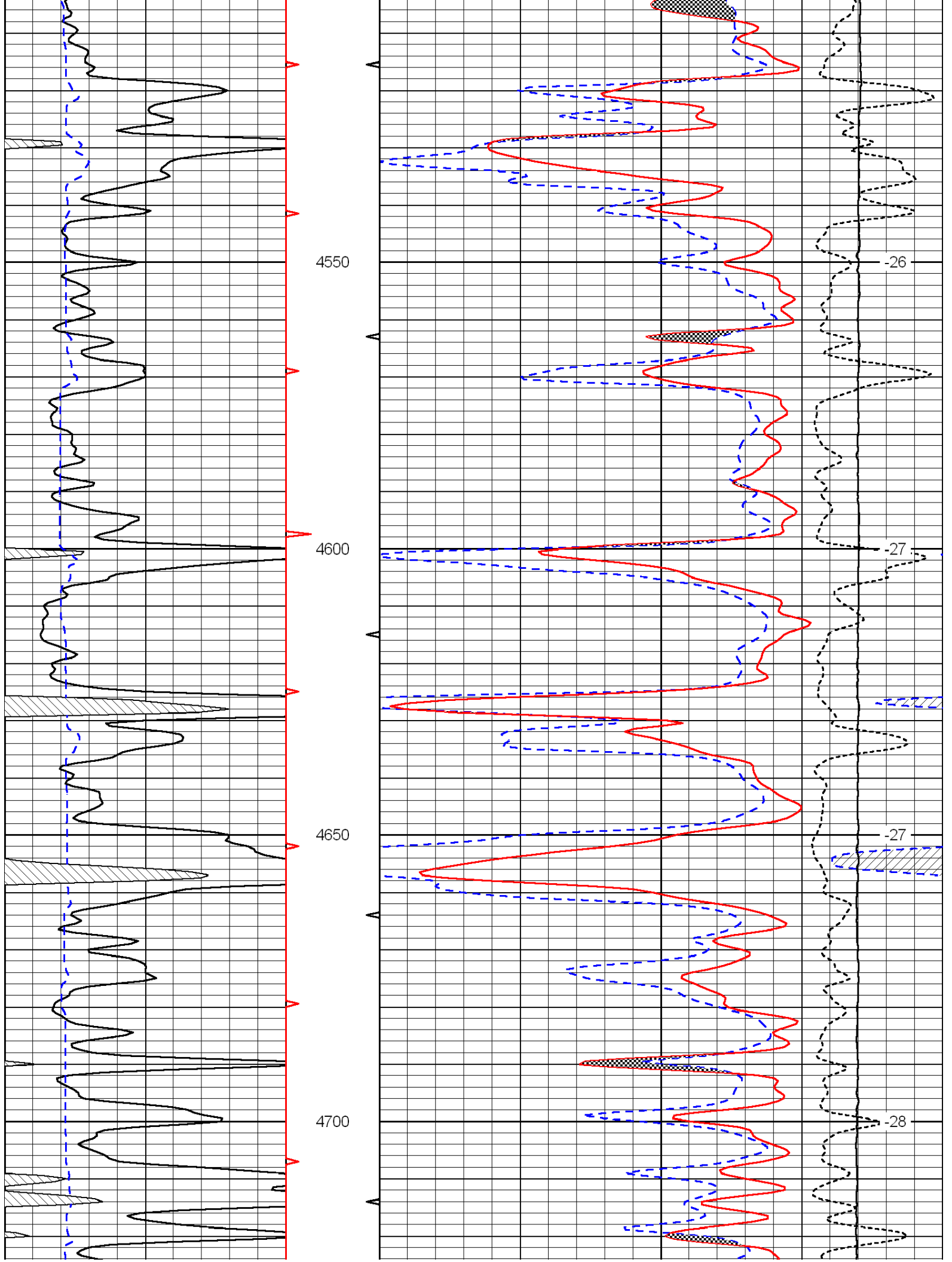


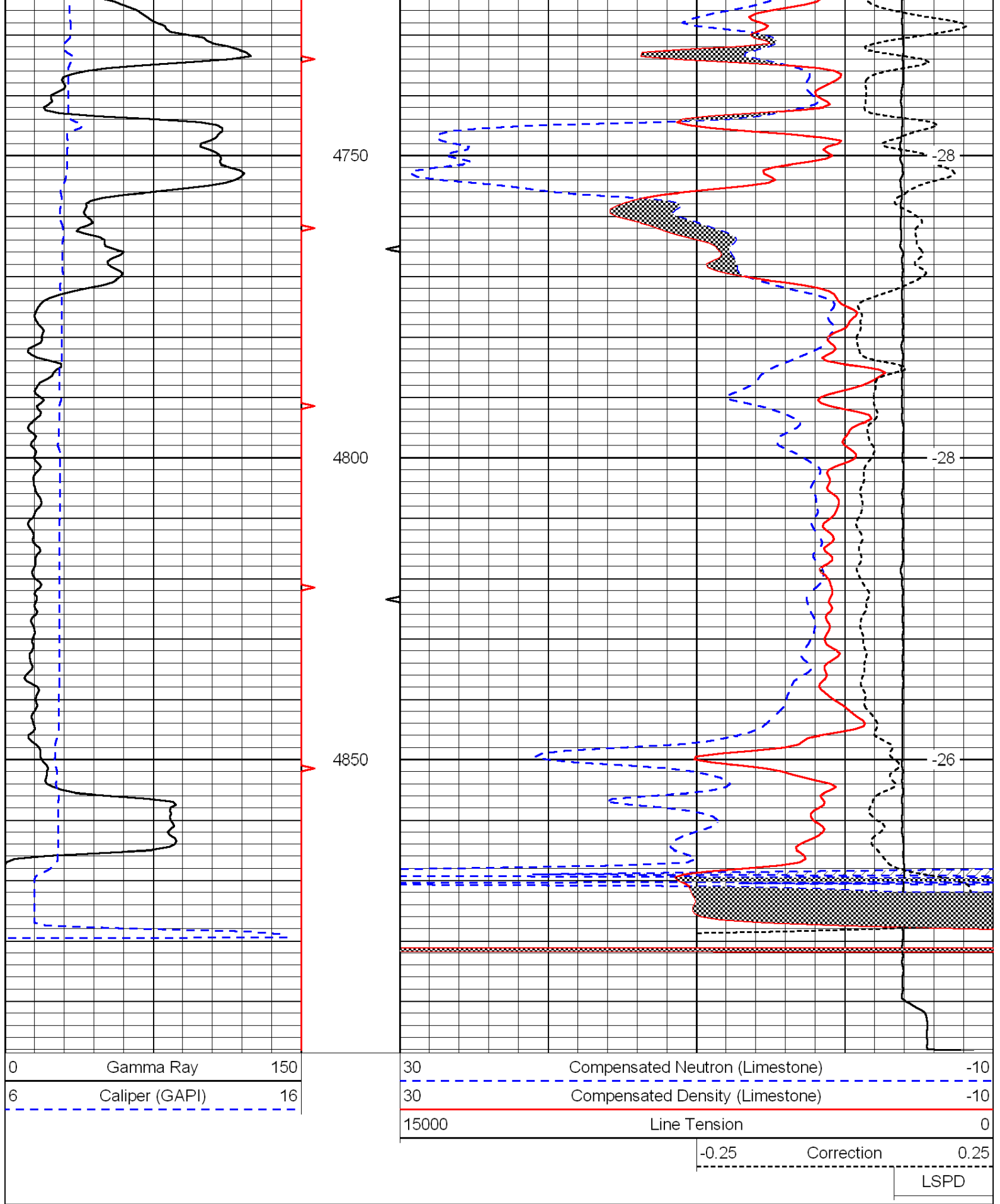
Database File: c:\warrior\data\becker\_bach no. 1\becker011312hd.db  
 Dataset Pathname: dil/@00000e60  
 Presentation Format: cndlspec  
 Dataset Creation: Fri Jan 13 23:40:53 2012  
 Charted by: Depth in Feet scaled 1:240











0	Gamma Ray	150
6	Caliper (GAPI)	16

30	Compensated Neutron (Limestone)	-10
30	Compensated Density (Limestone)	-10

15000	Line Tension	0
-------	--------------	---

-0.25	Correction	0.25
-------	------------	------

LSPD
------