



Pioneer Energy Services

## Dual Compensated Porosity Log

15-101-22,531-00-00

API No.

Company **Larson Engineering, Inc.**  
 Well **E.M. Stanley Unit #1-20**  
 Field **Wildcat**  
 County **Lane** State **Kansas**

Location **134' FSL & 347' FEL**  
 Sec: **20** Twp: **18S** Rge: **27W**

Permanent Datum **Ground Level** Elevation **2687**  
 Log Measured From **Kelly Bushing** **7** Ft. Above Perm. Datum  
 Drilling Measured From **Kelly Bushing**

Other Services  
 DIL  
 MEL  
 Elevation  
 K.B. 2694  
 D.F.  
 G.L. 2687

Date	8/4/2014	
Run Number	One	
Type Log	CNL / CDL	
Depth Driller	4644	
Depth Logger	4640	
Bottom Logged Interval	4619	
Top Logged Interval	3600	
Type Fluid In Hole	Chemical	
Salinity, PPM CL	3500	
Density	9.2	
Level	Full	
Max. Rec. Temp. F	122	
Operating Rig Time	4.5 Hours	
Equipment -- Location	108   Hays	
Recorded By	J Long	
Witnessed By	Vern Schrag	

**Borehole Record**

Run No.	Bit	From	To	Size	Wgt.	From	To
1	12.25	00	262	8.625	24#	00	262
2	7.875	262	4644				

**Casing Record**

<<< Fold Here >>>

All interpretations are opinions based on inferences from electrical or other measurements and we cannot and do not guarantee the accuracy or correctness of any interpretation, and we shall not, except in the case of gross or willful negligence on our part, be liable or responsible for any loss, costs, damages, or expenses incurred or sustained by anyone resulting from any interpretation made by any of our officers, agents or employees. These interpretations are also subject to our general terms and conditions set out in our current Price Schedule.

**Comments**

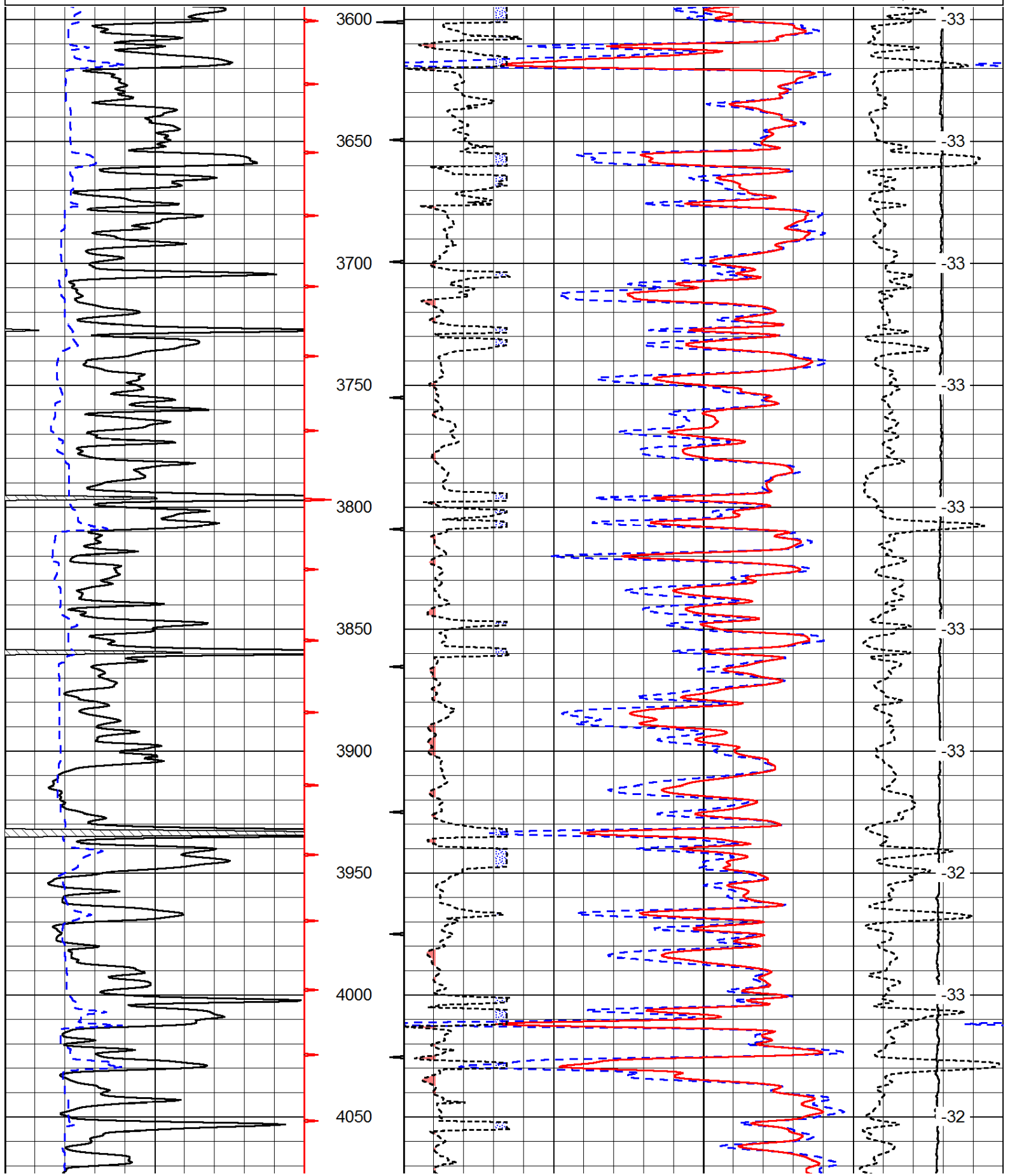
Thank you for using Pioneer Energy Services  
[www.pioneerenergy.com](http://www.pioneerenergy.com)  
 785 625 3858

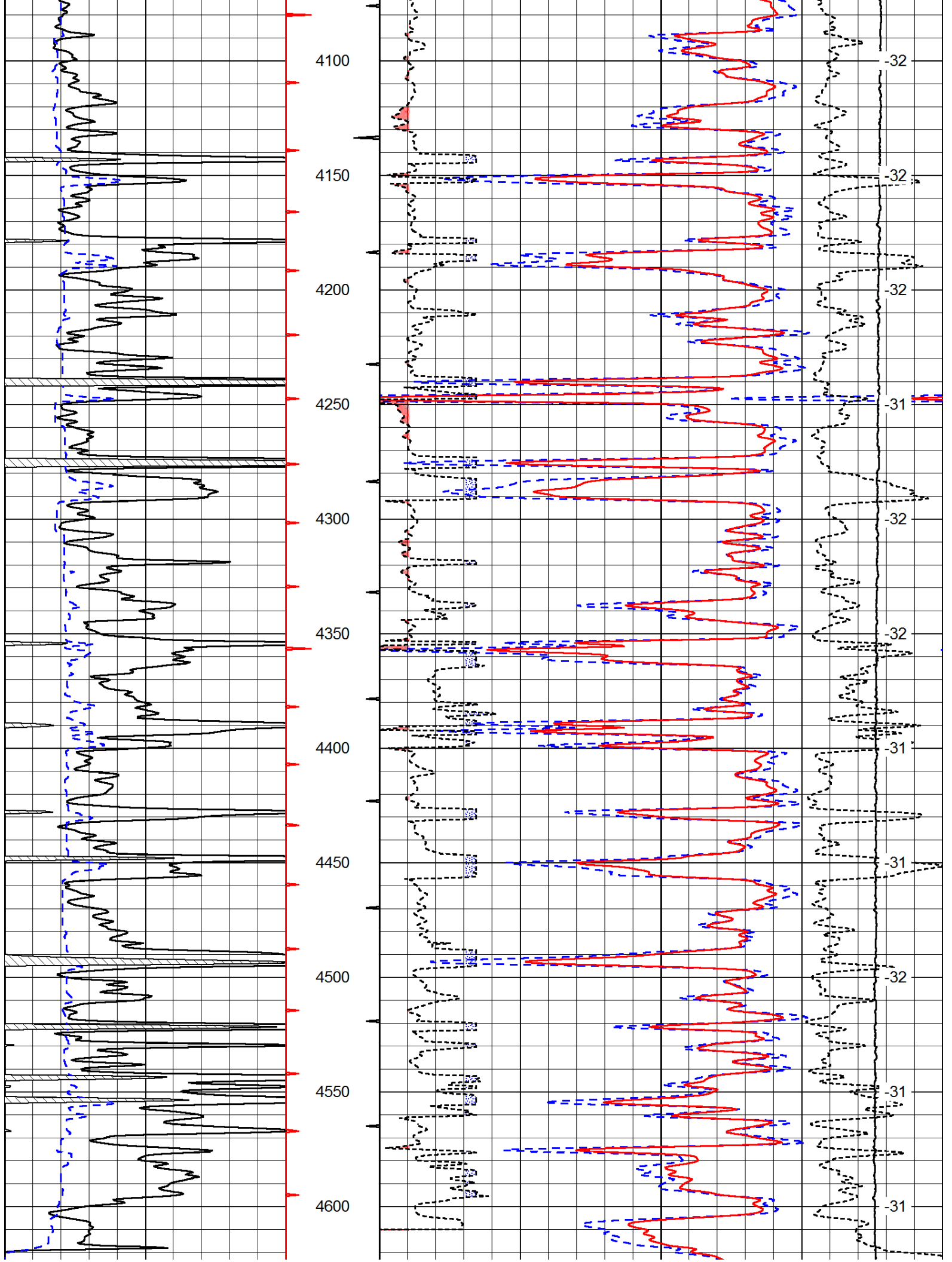
Dighton Ks., 8 East to Scout Rd., 1 South, West Into.

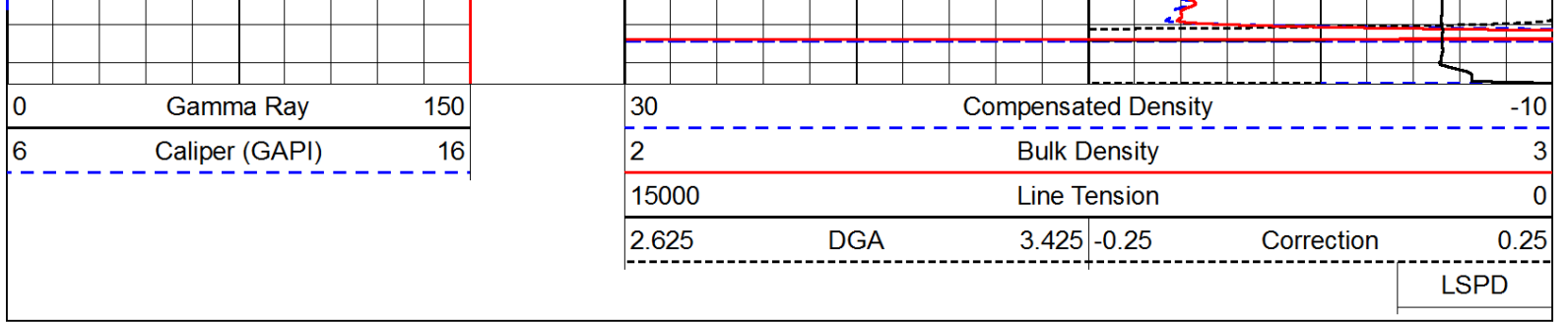
Database File: c:\warrior\data\larson\_e.m. stanley unit #1-20\larson\_e\_m\_stanley\_1-20hd.db  
 Dataset Pathname: DIL\larsstck  
 Presentation Format: cdl  
 Dataset Creation: Mon Aug 04 19:04:04 2014  
 Charted by: Depth in Feet scaled 1:600

0	Gamma Ray	150
6	Caliper (GAPI)	16

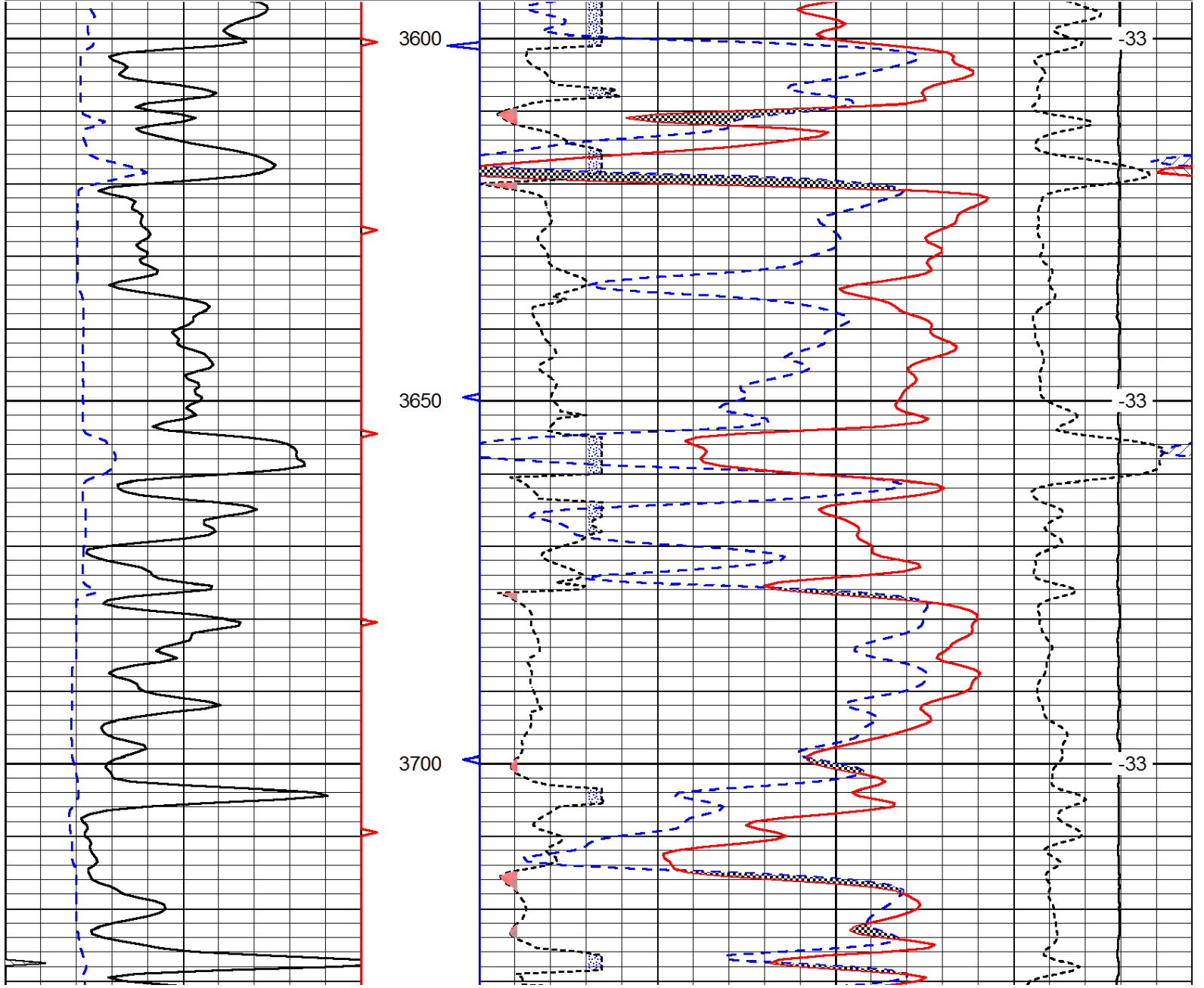
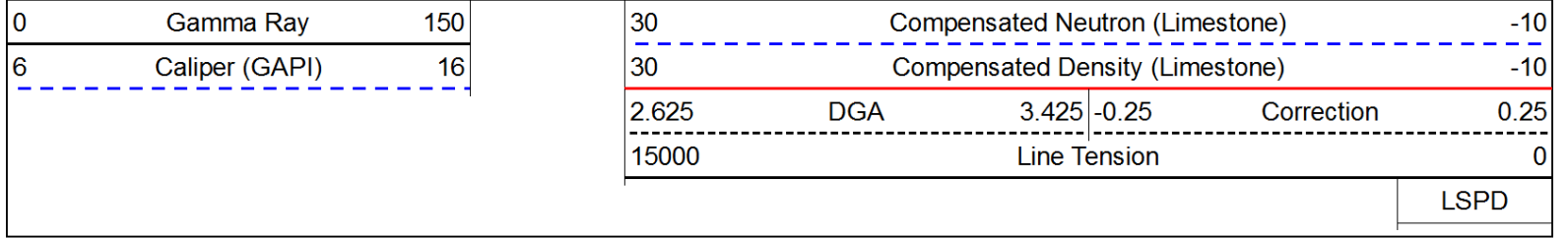
30	Compensated Density		-10
2	Bulk Density		3
15000	Line Tension		0
2.625	DGA	3.425	-0.25
Correction			0.25
LSPD			

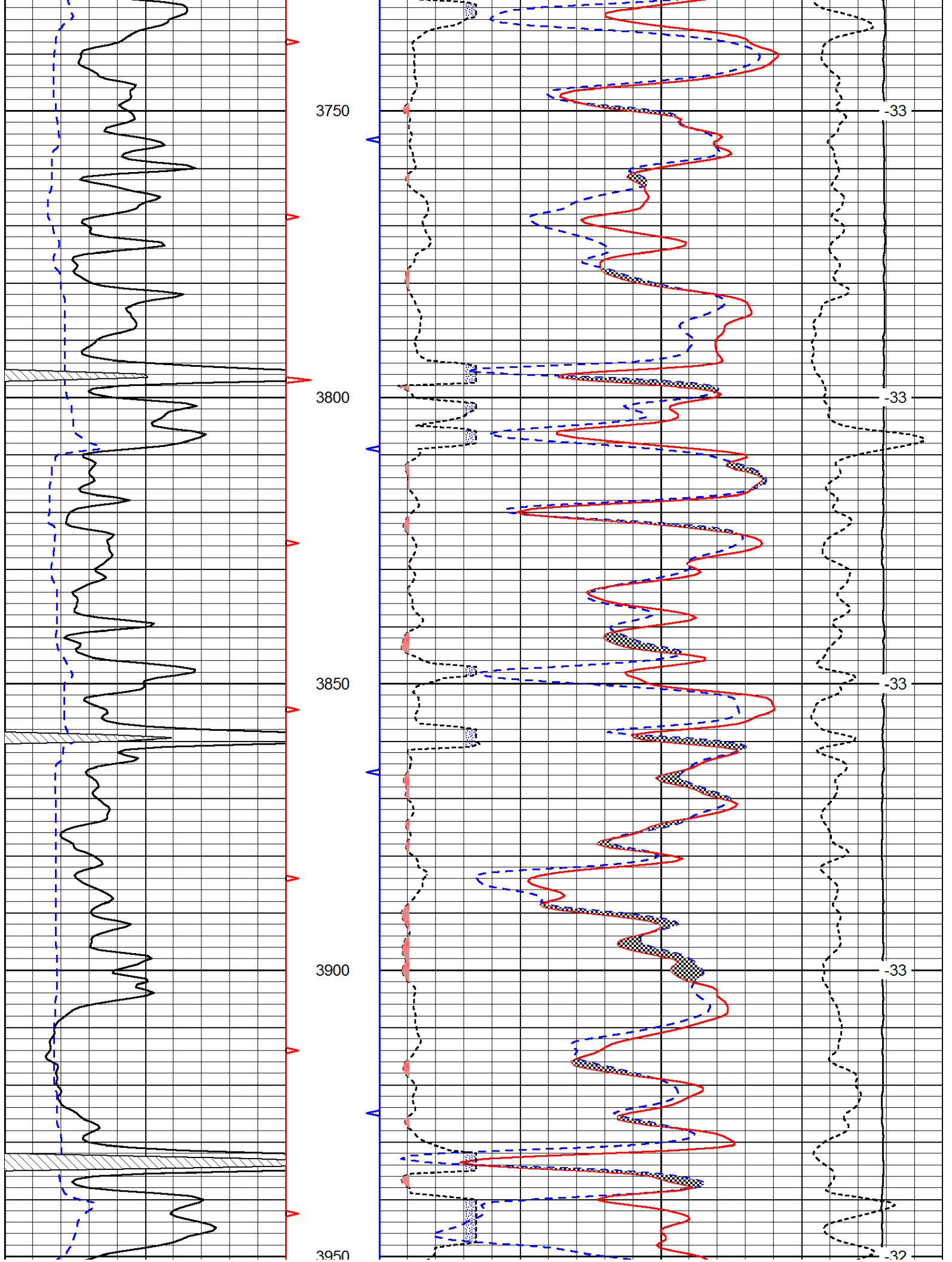


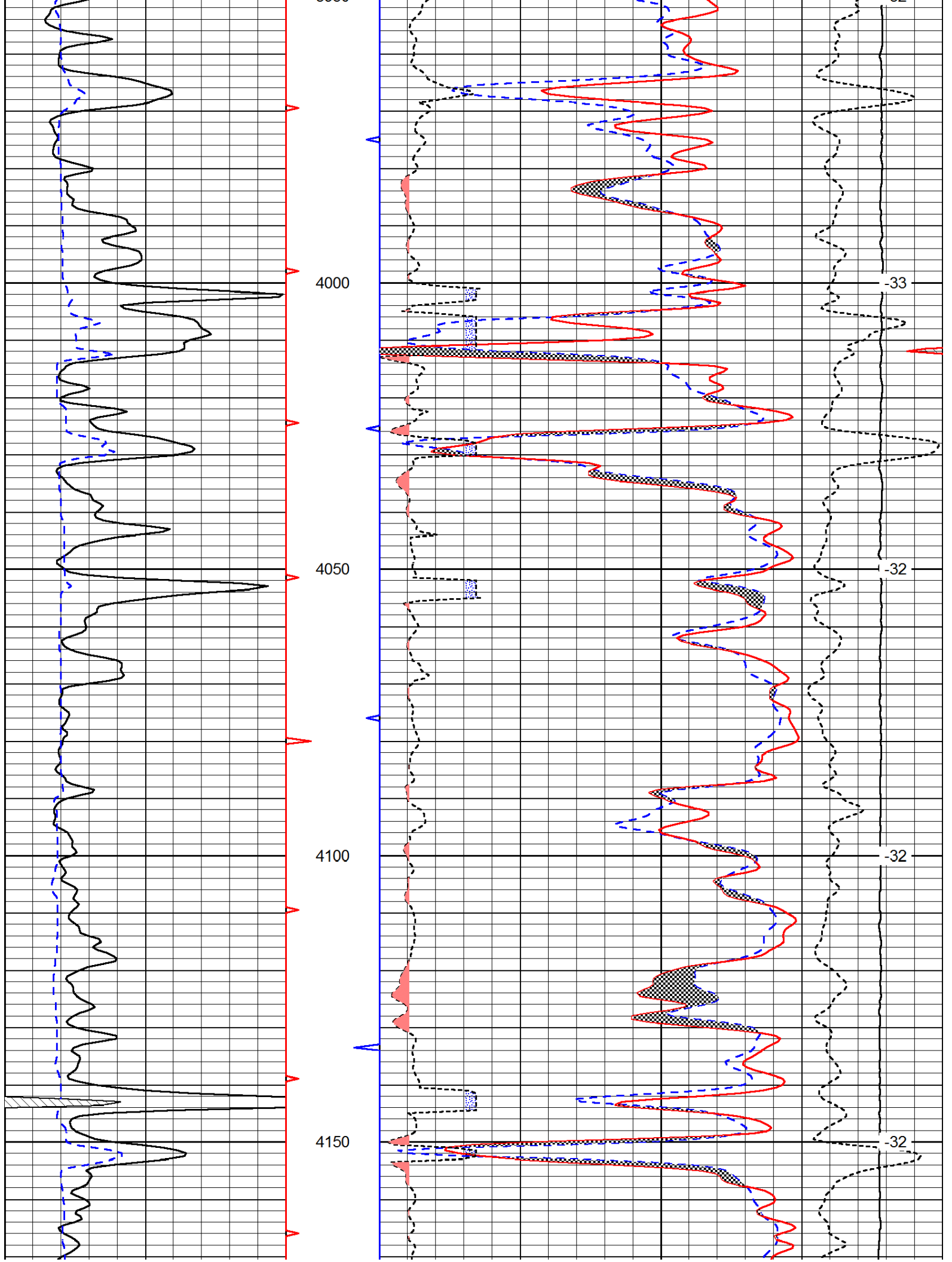


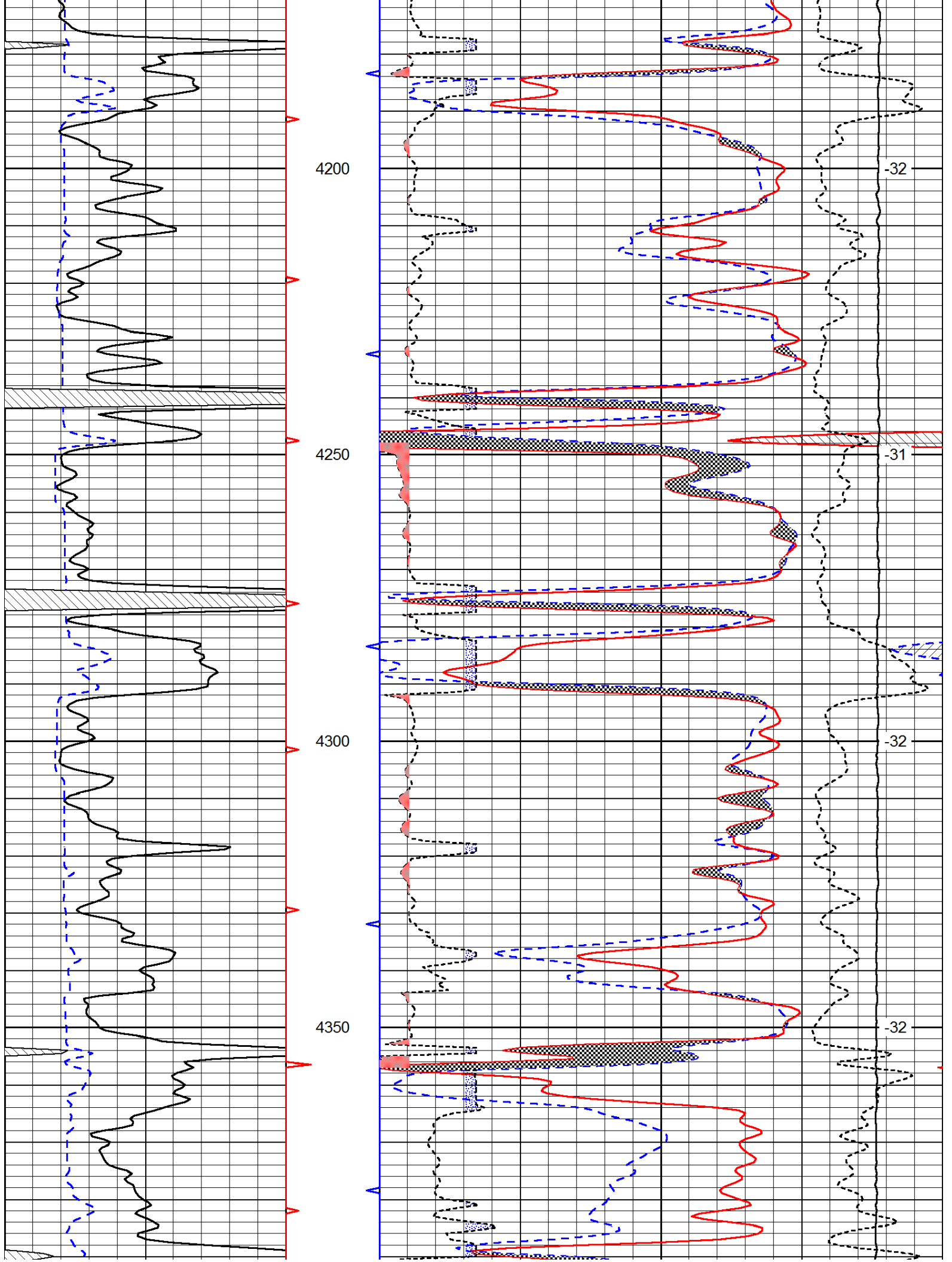


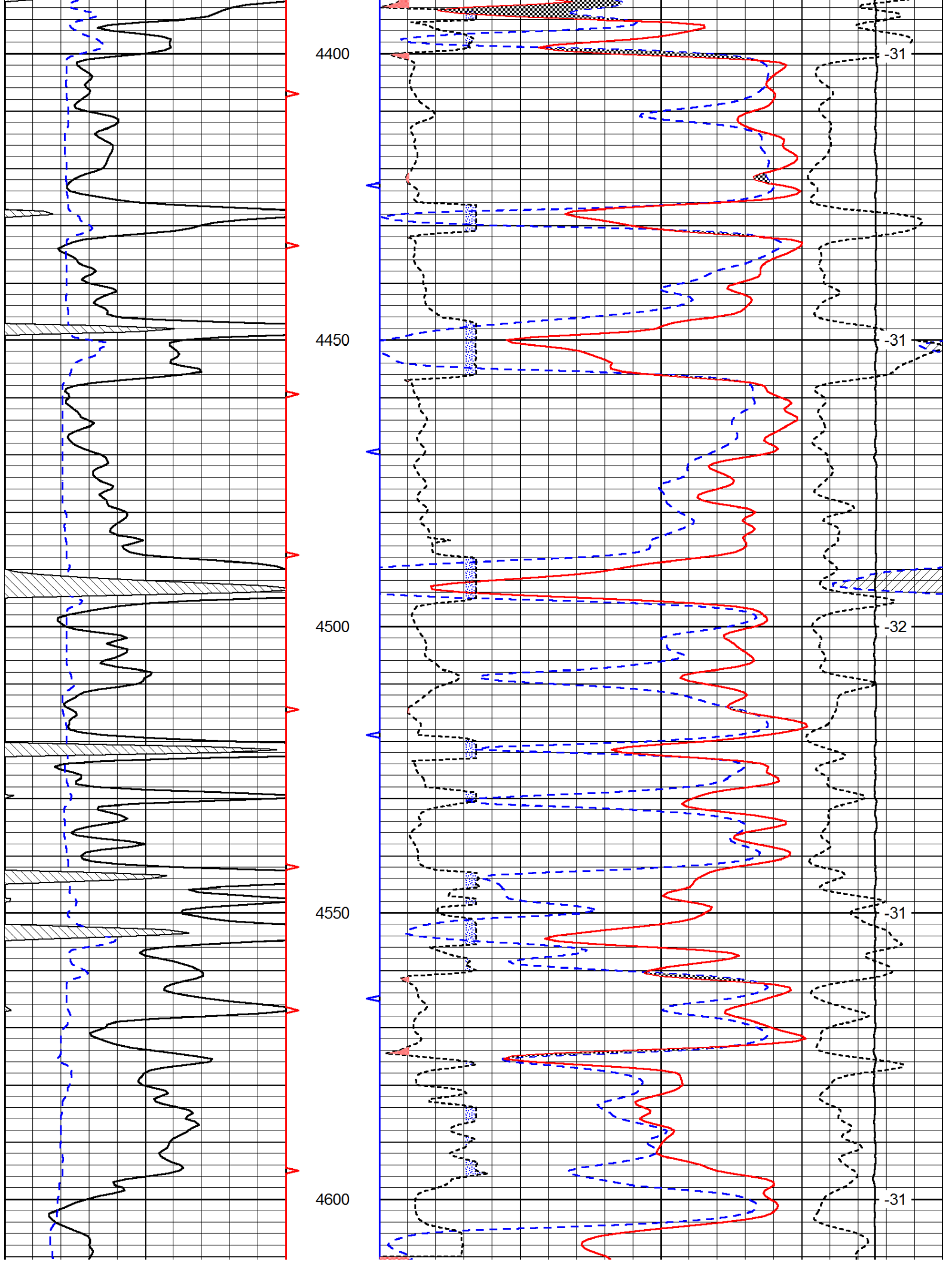
Database File: c:\warrior\data\larson\_e.m. stanley unit #1-20\larson\_e\_m\_stanley\_1-20hd.db  
 Dataset Pathname: DIL/larsstck  
 Presentation Format: cndlspec  
 Dataset Creation: Mon Aug 04 19:04:04 2014  
 Charted by: Depth in Feet scaled 1:240

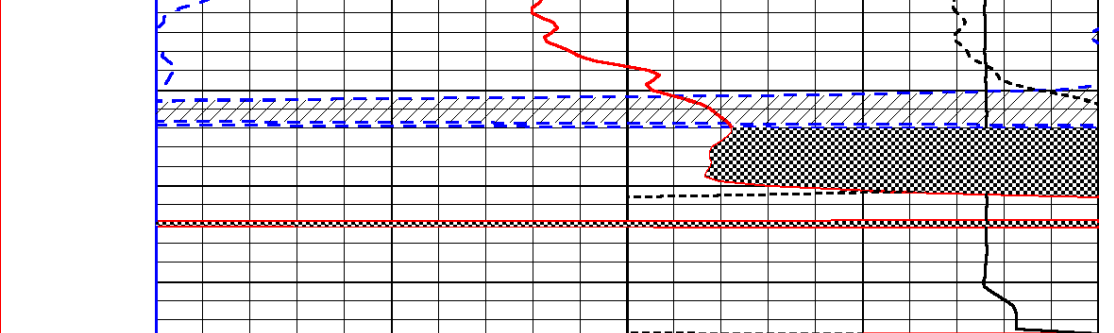
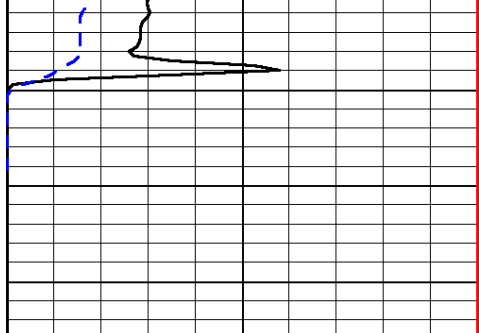












0	Gamma Ray	150
6	Caliper (GAPI)	16

30	Compensated Neutron (Limestone)	-10
30	Compensated Density (Limestone)	-10

2.625	DGA	3.425	-0.25	Correction	0.25
15000	Line Tension				0

LSPD