



Pioneer Energy Services

Dual Induction Log

15-101-22,531-00-00

API No.

Company Larson Engineering, Inc.

Well E.M. Stanley Unit #1-20

Field Wildcat

County Lane State

Kansas

Location 134' FSL & 347' FEL

Sec: 20 Twp: 18s Rge: 27w

Permanant Datum Ground Level Elevation 2687

Log Measured From Kelly Bushing 7 Ft. Above Perm. Datum

Drilling Measured From Kelly Bushing

Other Services
CNL/CDL
MEL
Elevation
K.B. 2694
D.F. 2687
G.L. 2687

Date	8/4/2014	
Run Number	One	
Depth Driller	4644	
Depth Logger	4640	
Bottom Logged Interval	4639	
Top Log Interval	250	
Casing Driller	8.625 @ 262	
Casing Logger	260	
Bit Size	7.875	
Type Fluid in Hole	Chemical	
Salinity,ppm CL	3500	
Density / Viscosity	9.2 58	
pH / Fluid Loss	10.0 9.6	
Source of Sample	Flowline	
Rm @ Meas. Temp	.68 @ 78	
Rmf @ Meas. Temp	.51 @ 78	
Rmc @ Meas. Temp	.92 @ 78	
Source of Rmf / Rmc	Charts	
Rm @ BHT	.43 @ 122	
Operating Rig Time	4.5 Hours	
Max Rec. Temp. F	122	
Equipment Number	108	
Location	Hays	
Recorded By	J Long	D Fischer
Witnessed By	Vern Schrag	

<<< Fold Here >>>

All interpretations are opinions based on inferences from electrical or other measurements and we cannot and do not guarantee the accuracy or correctness of any interpretation, and we shall not, except in the case of gross or willful negligence on our part, be liable or responsible for any loss, costs, damages, or expenses incurred or sustained by anyone resulting from any interpretation made by any of our officers, agents or employees. These interpretations are also subject to our general terms and conditions set out in our current Price Schedule.

Comments

Thank you for using Pioneer Energy Services
www.pioneerenergy.com
 785 625 3858
 Dighton Ks., 8 East to Scout Rd., 1 South, West Into.

Database File: c:\warrior\data\larson_e.m. stanley unit #1-20\larson_e_m_stanley_1-20hd.db
 Dataset Pathname: DIL\larsstck
 Presentation Format: dil2in
 Dataset Creation: Mon Aug 04 19:04:04 2014
 Charted by: Depth in Feet scaled 1:600

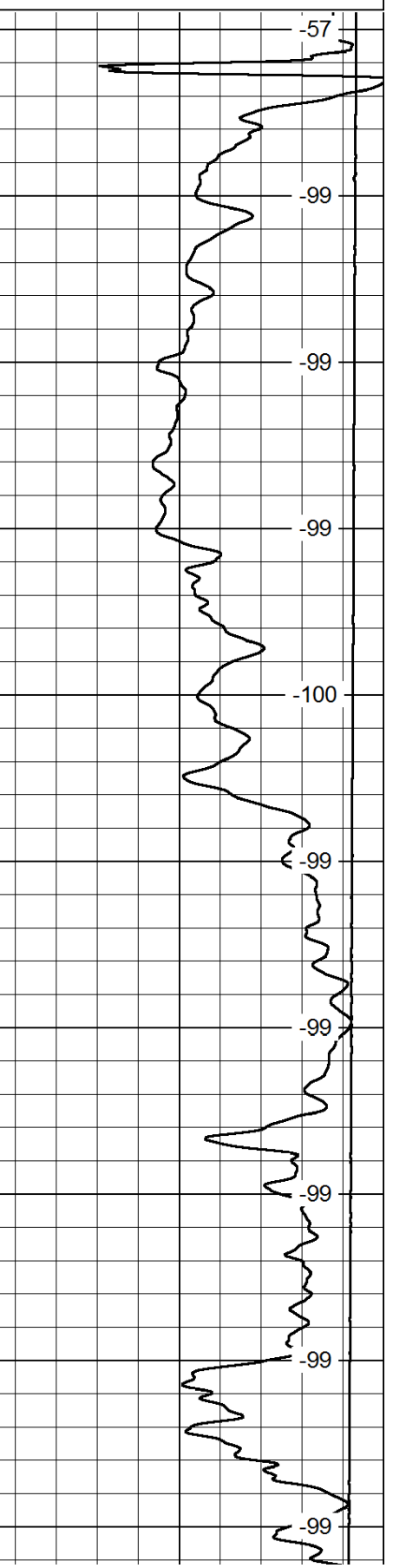
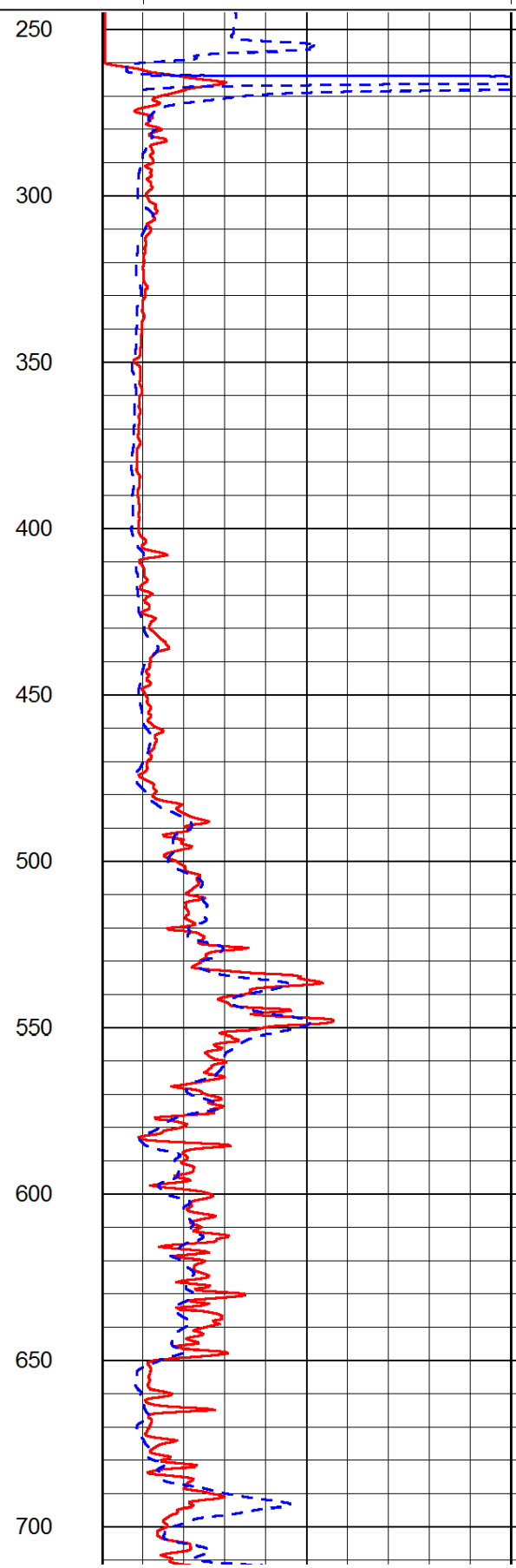
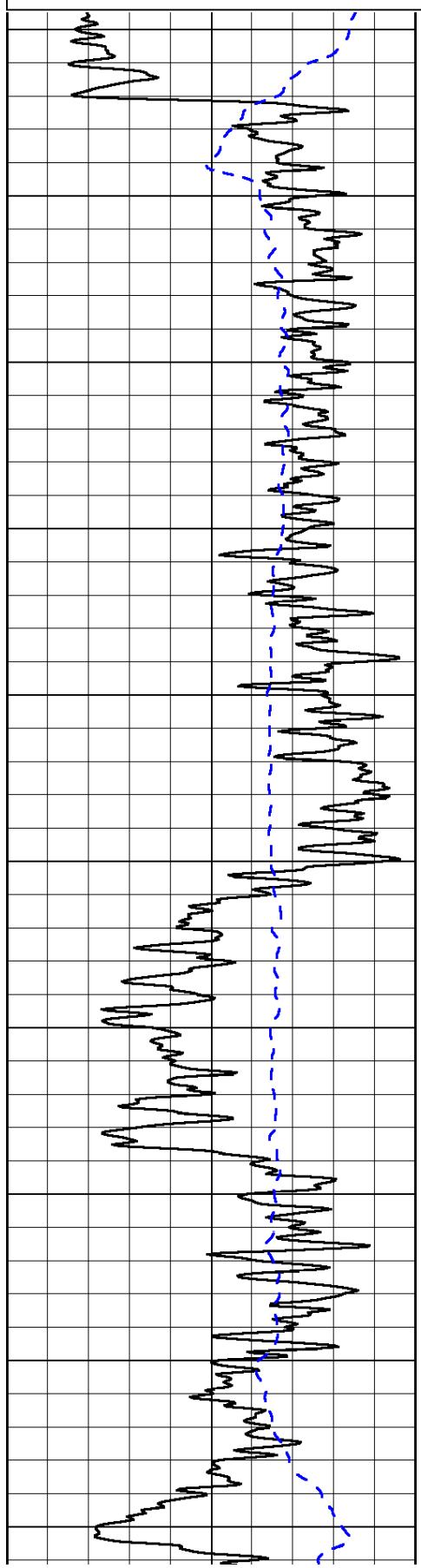
0	Gamma Ray	150
-200	SP (mV)	0

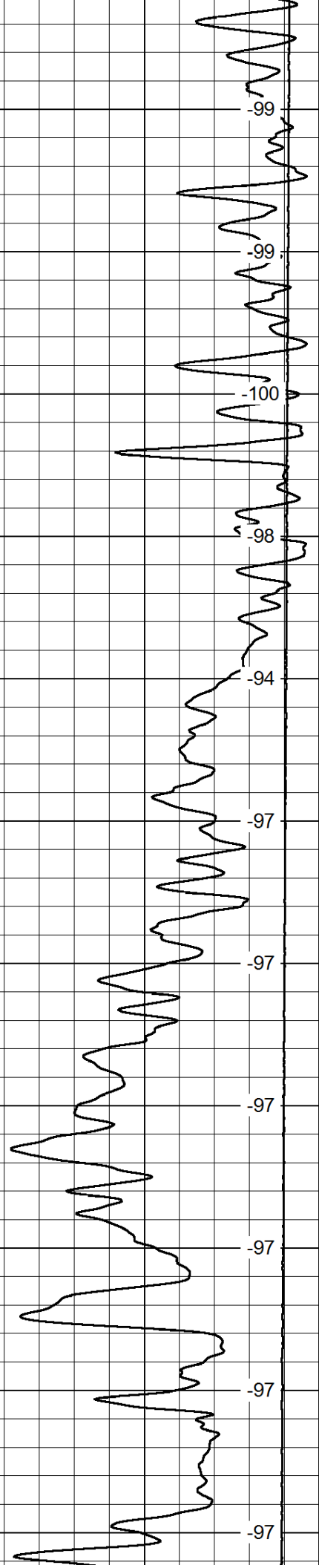
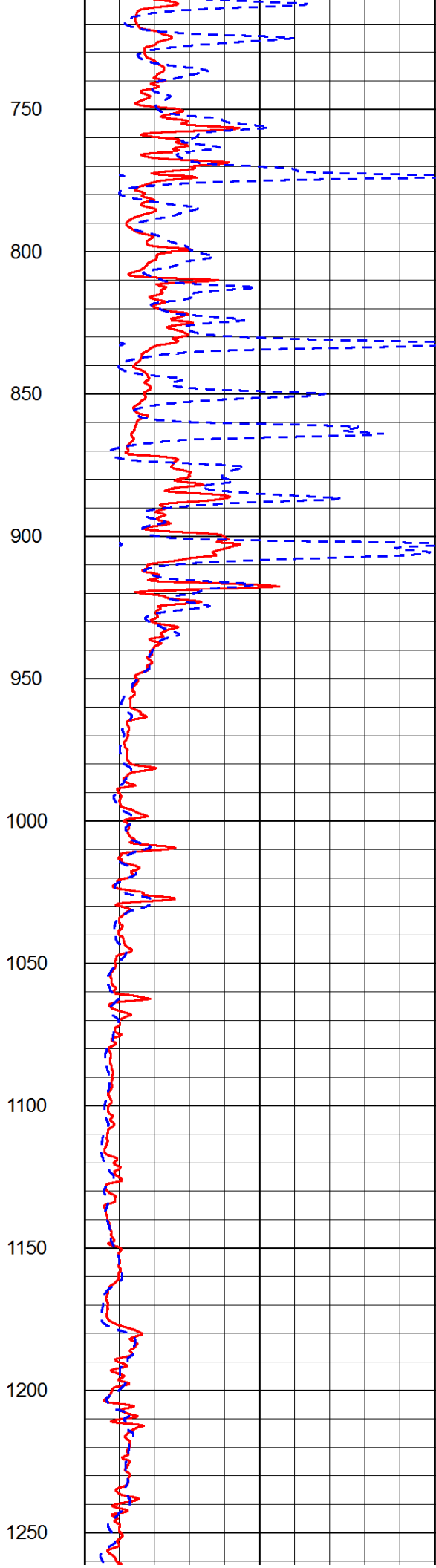
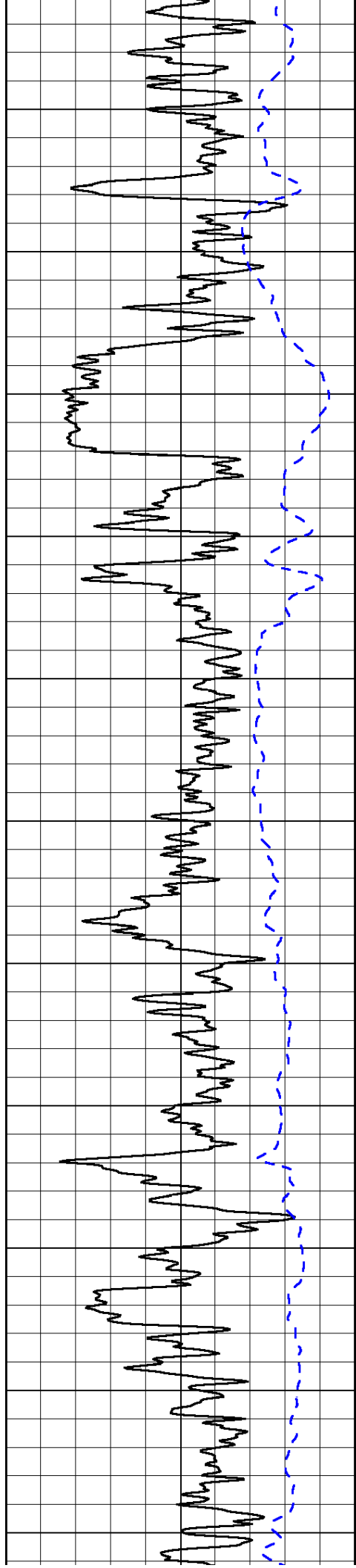
0	Shallow Resistivity	50
0	Deep Resistivity	50

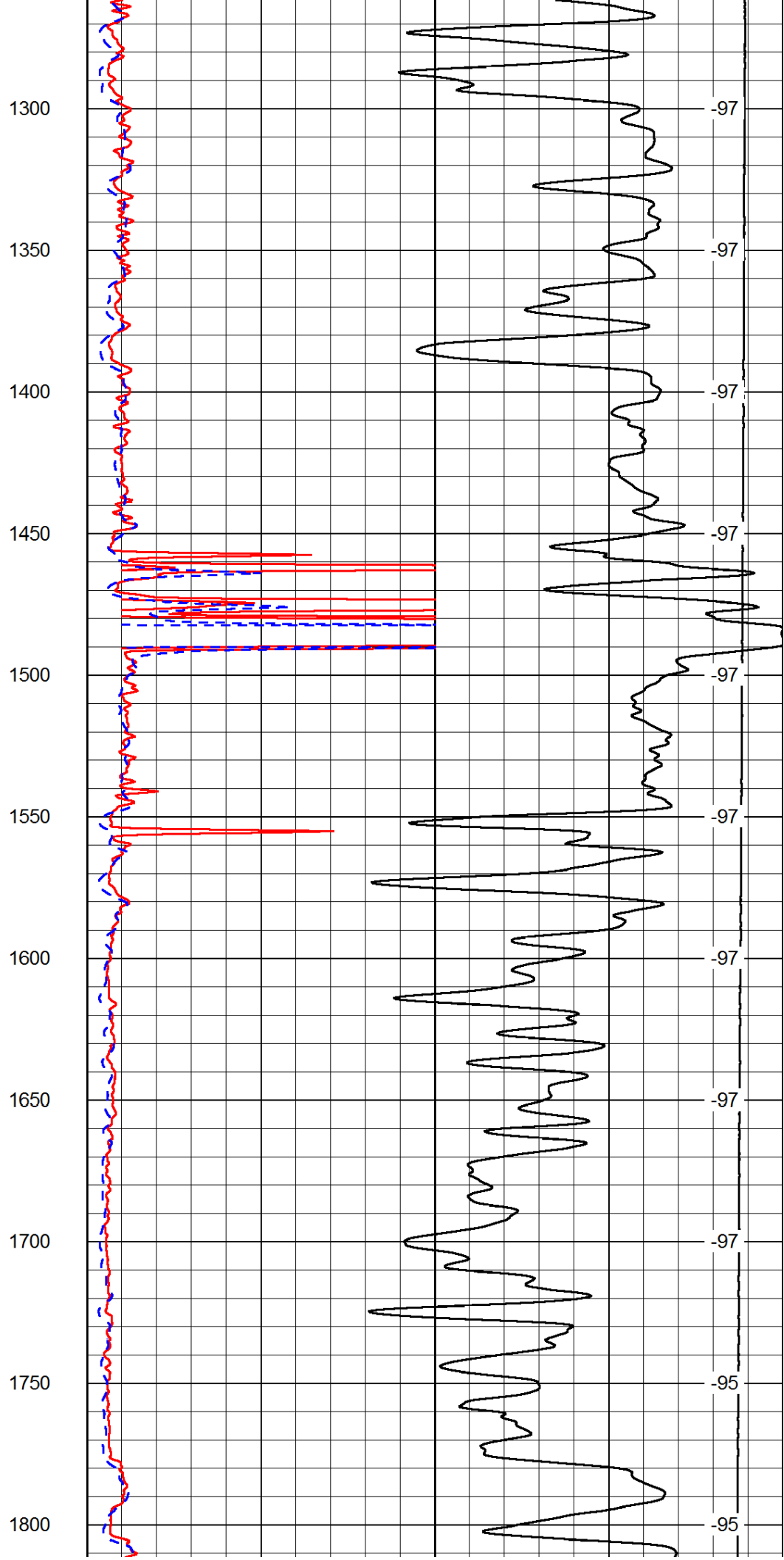
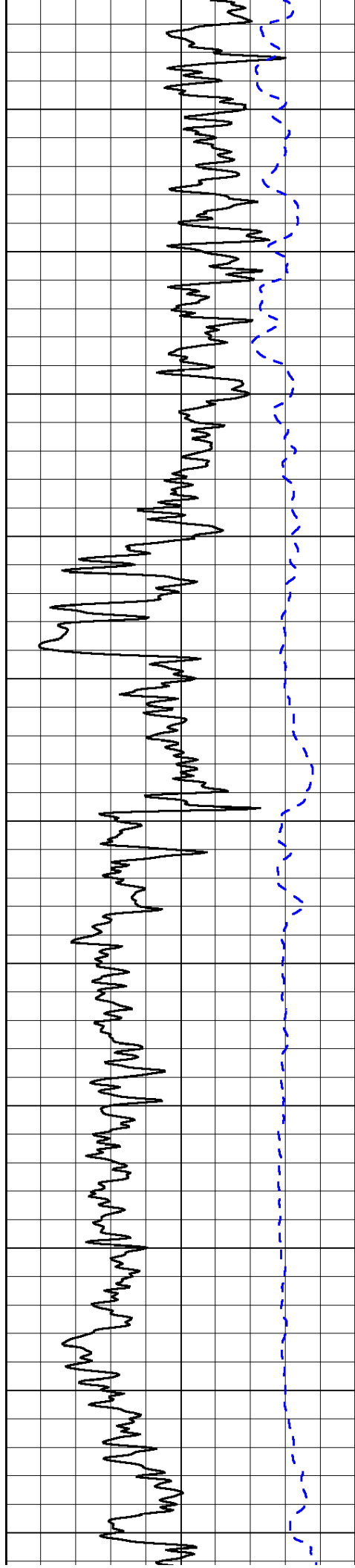
LSPD

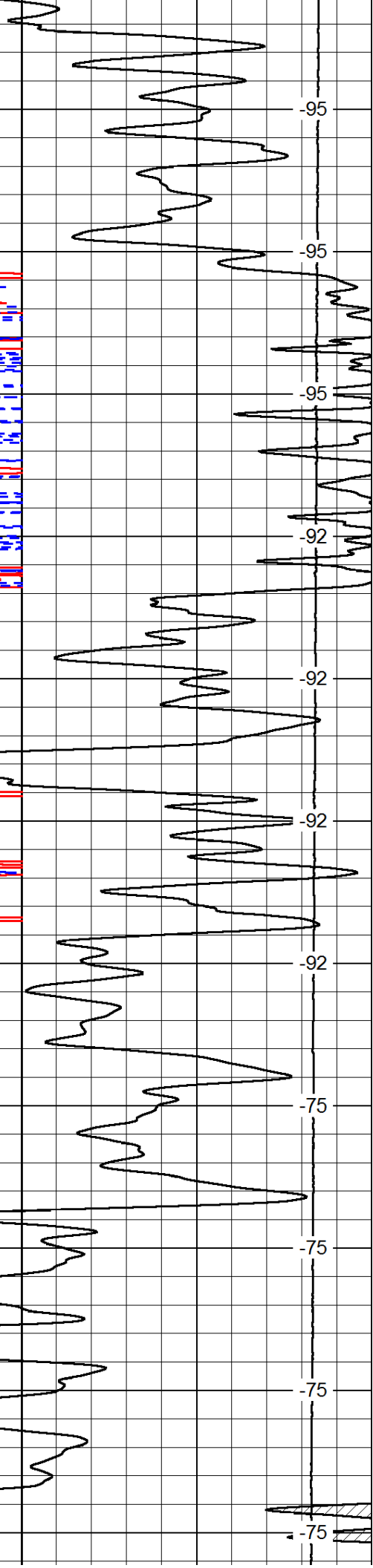
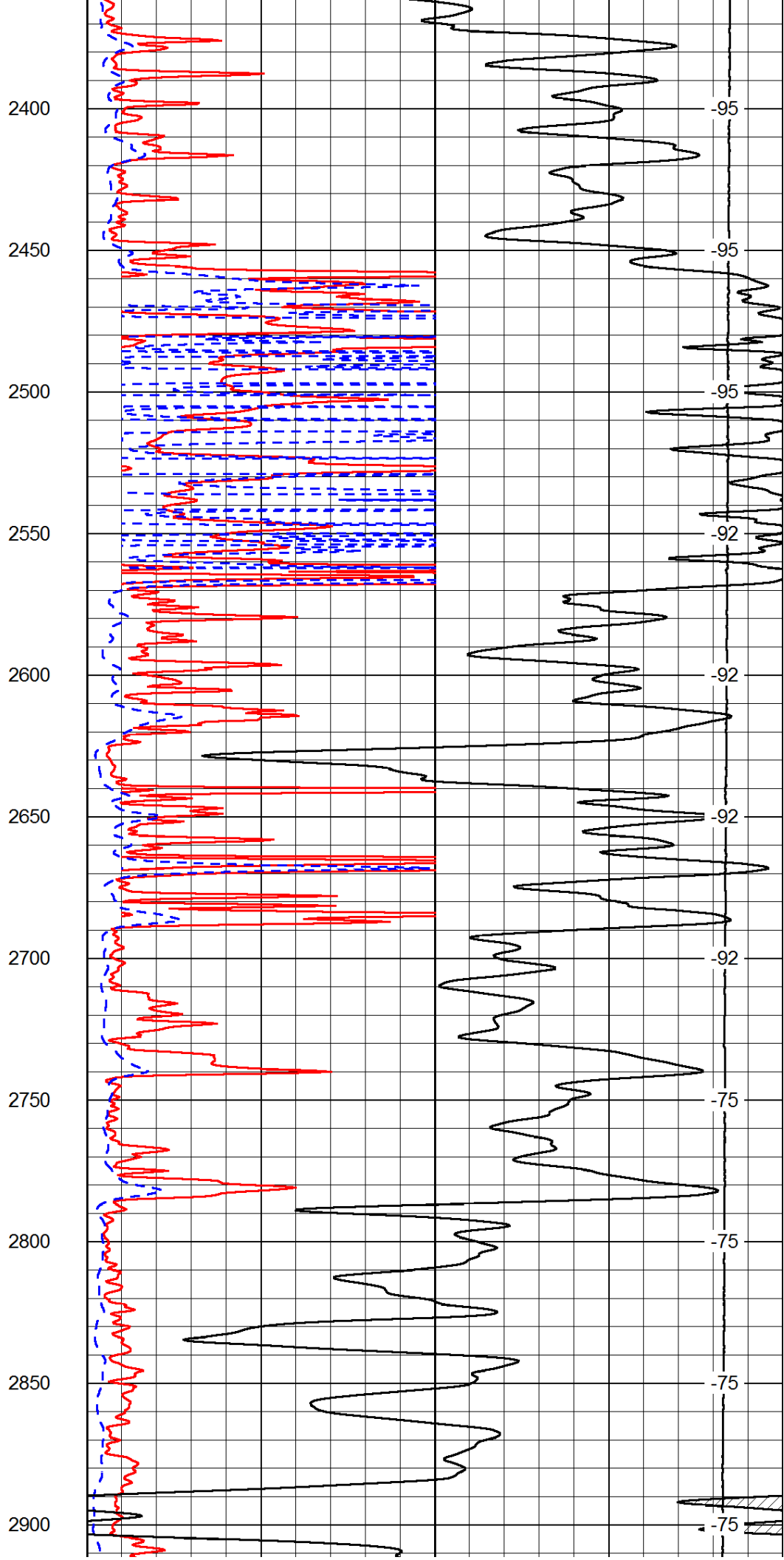
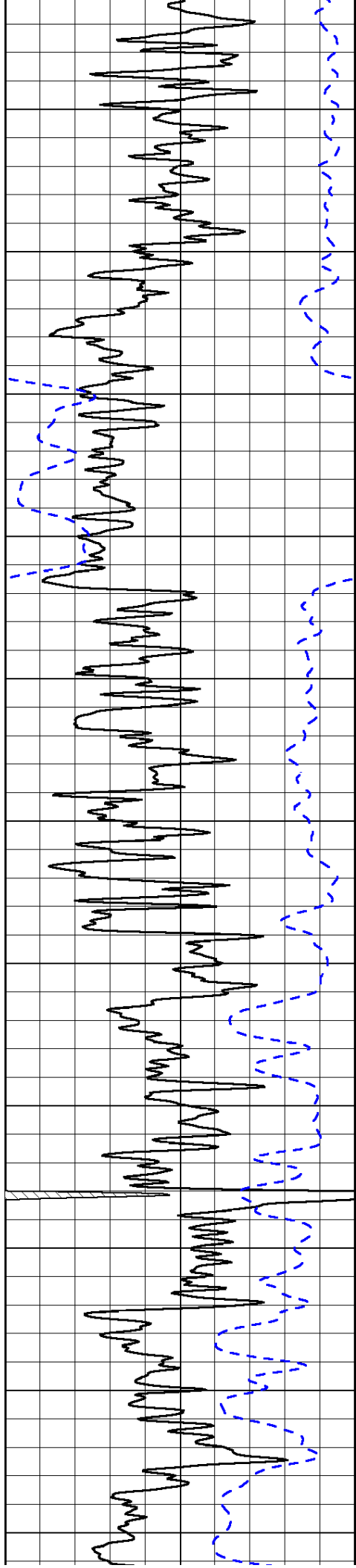
1000	Conductivity	0
15000	Line Tension	0

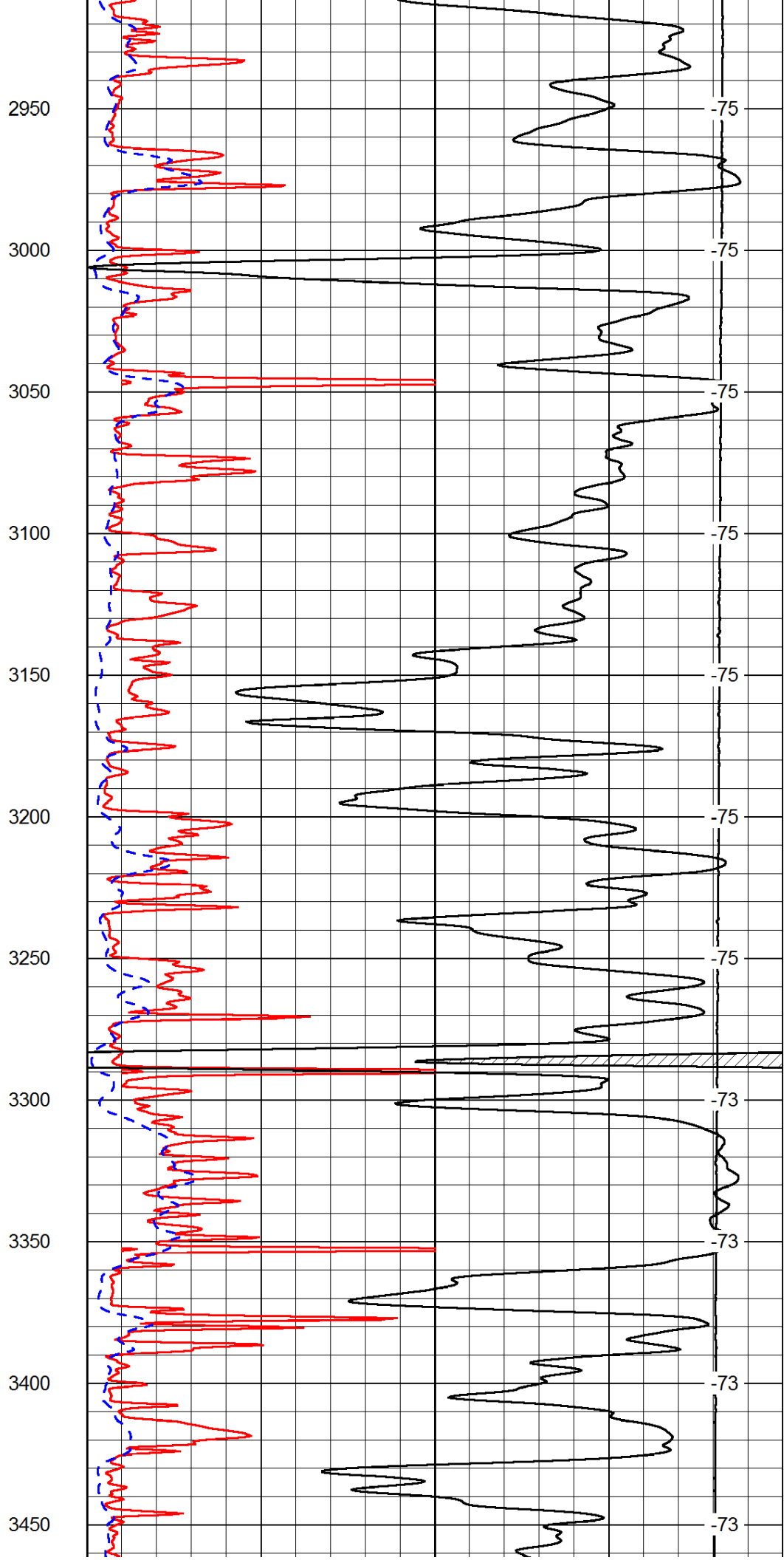
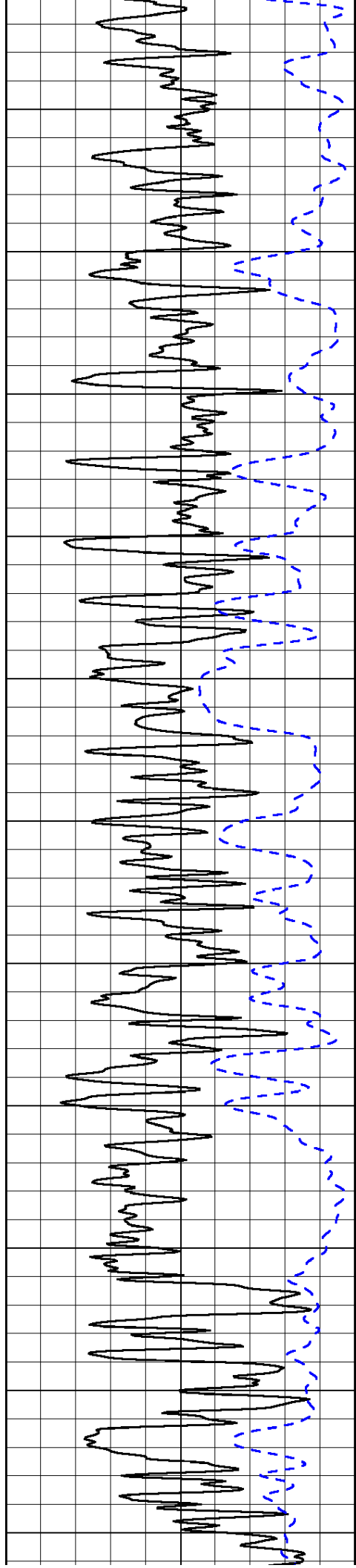
50	Shallow Resistivity	500
50	Deep Resistivity	500

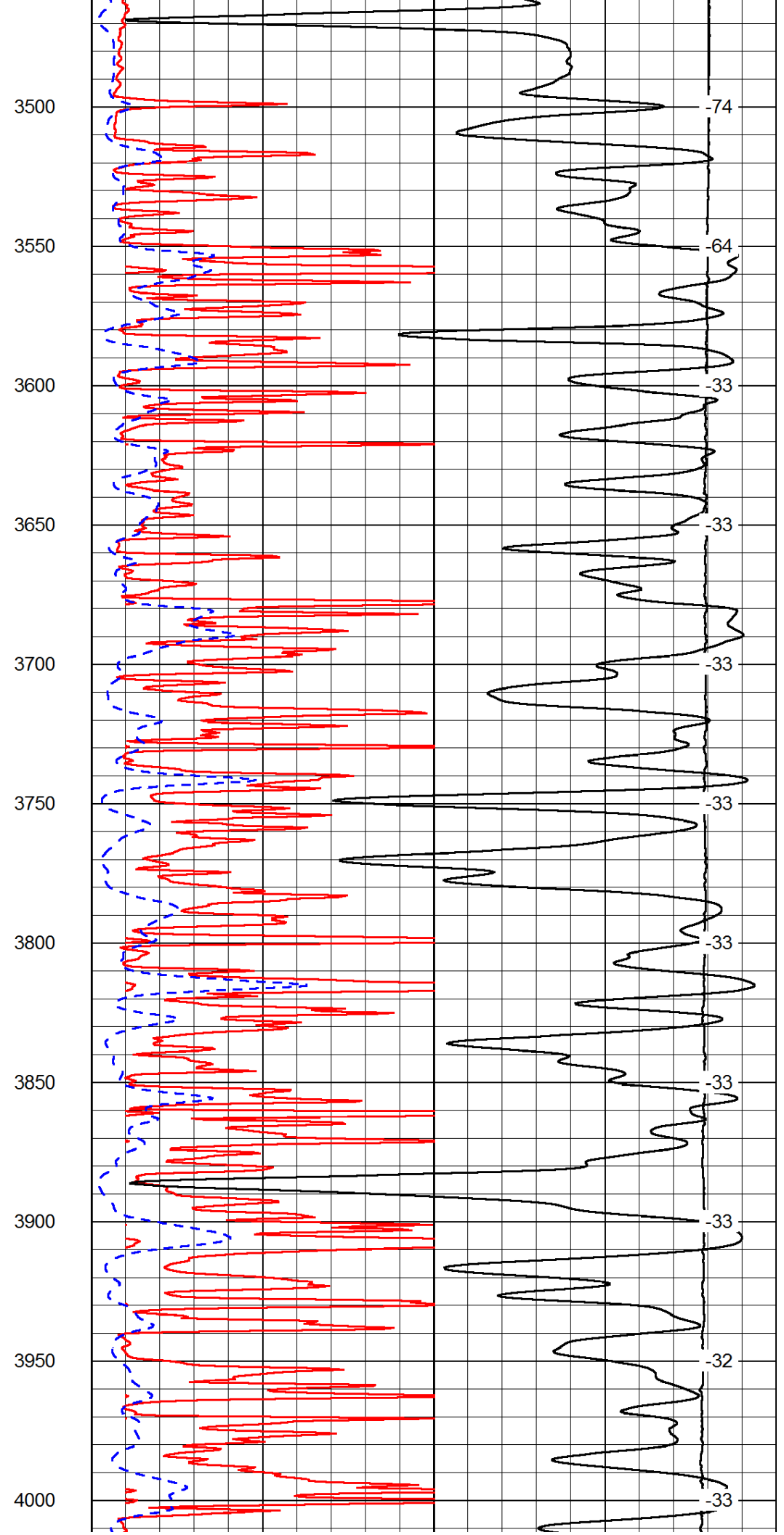
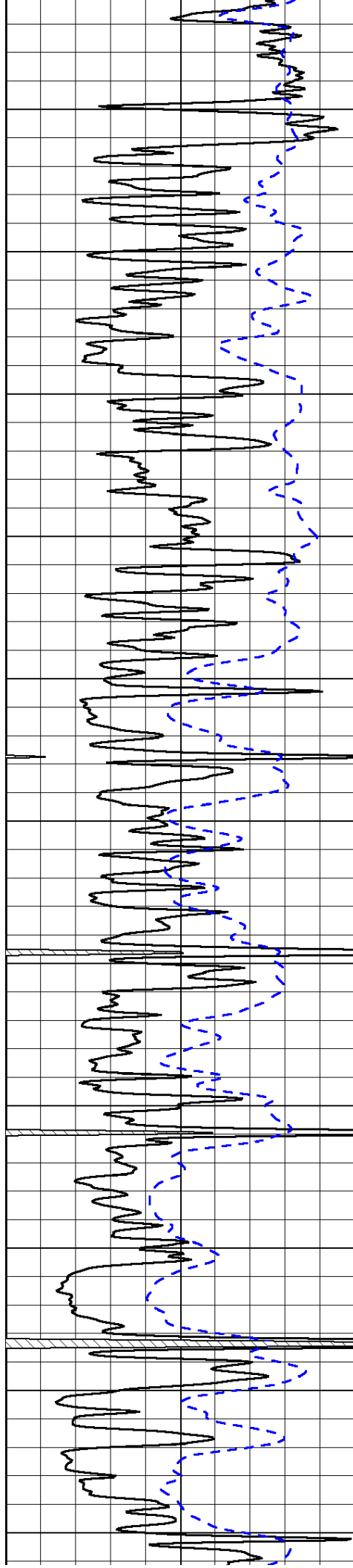


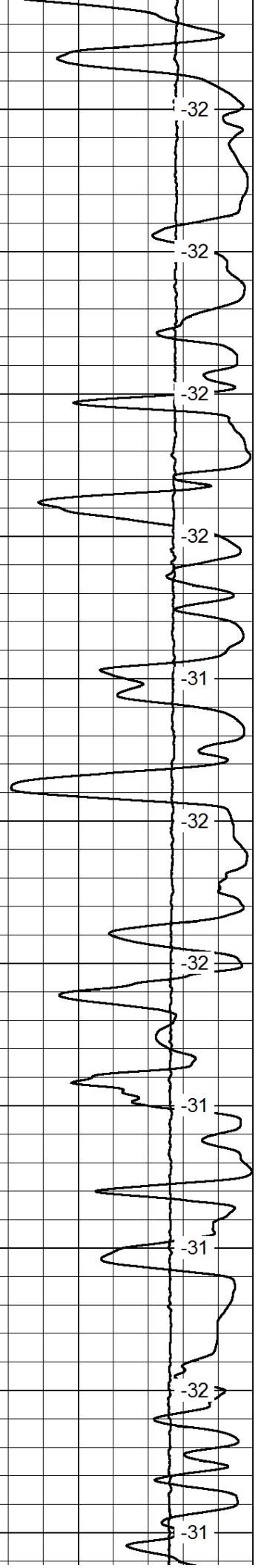
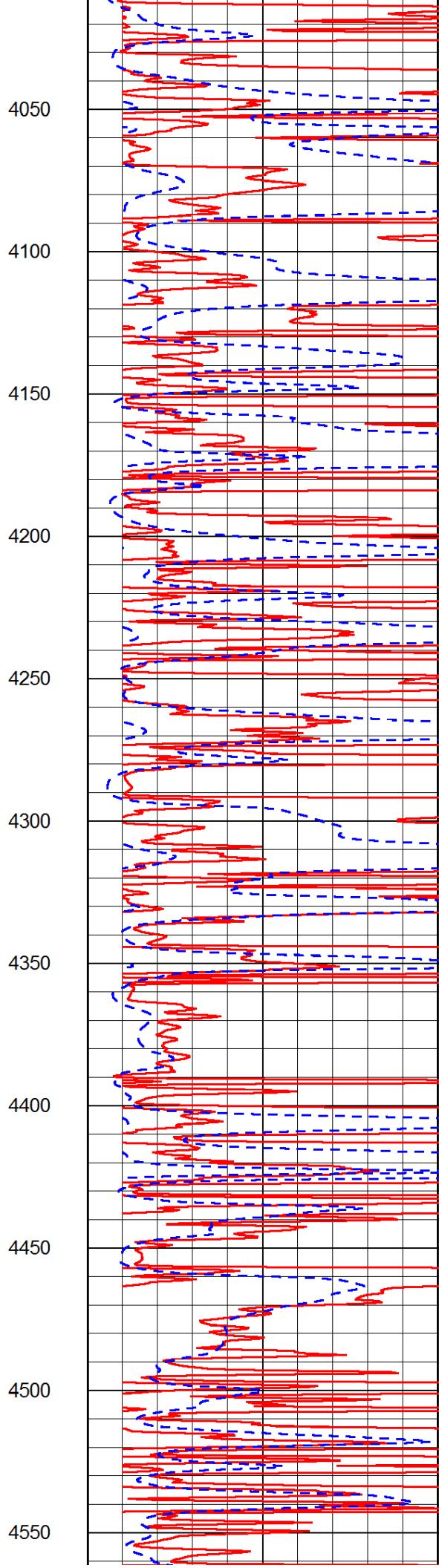
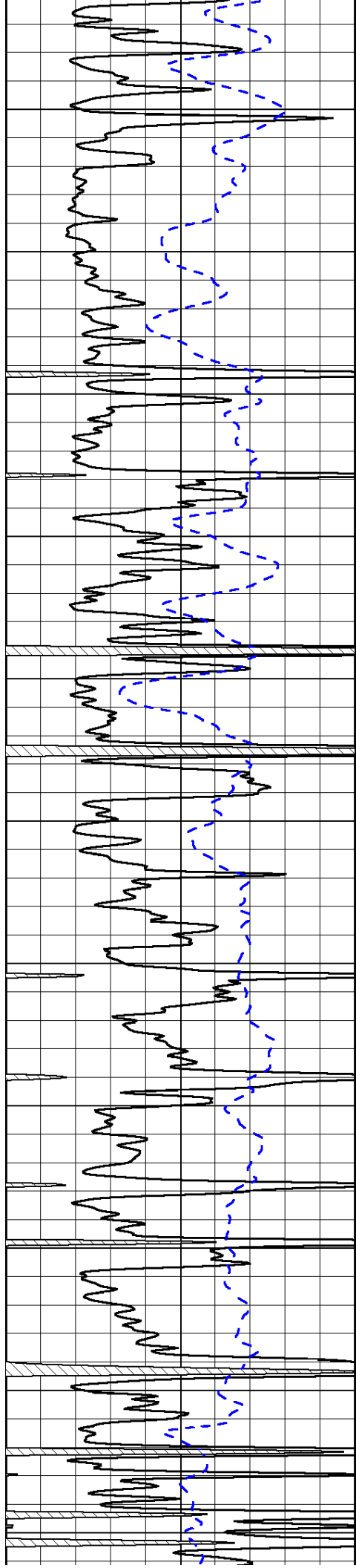


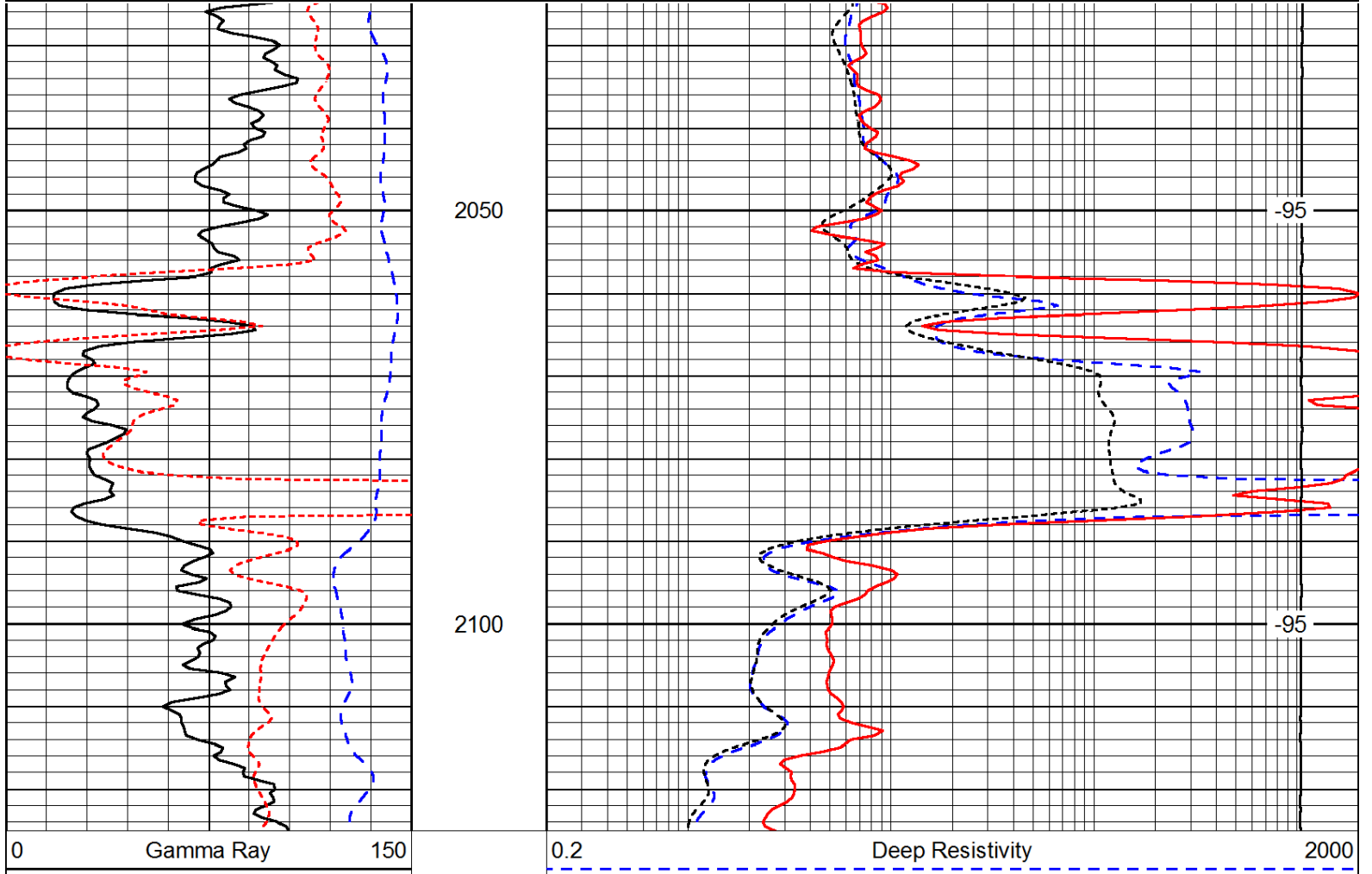
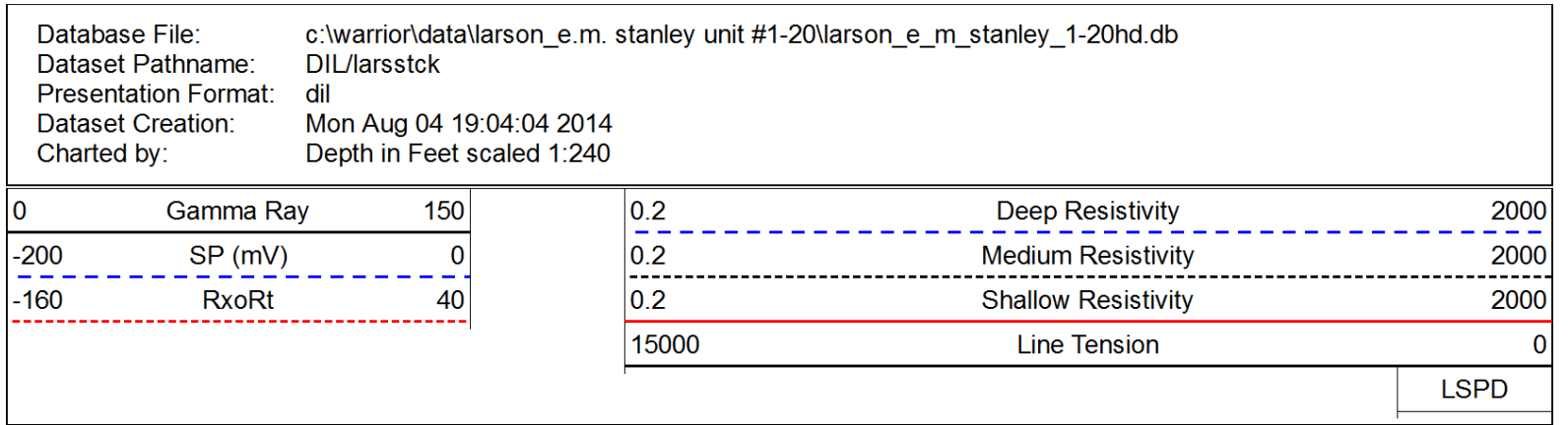
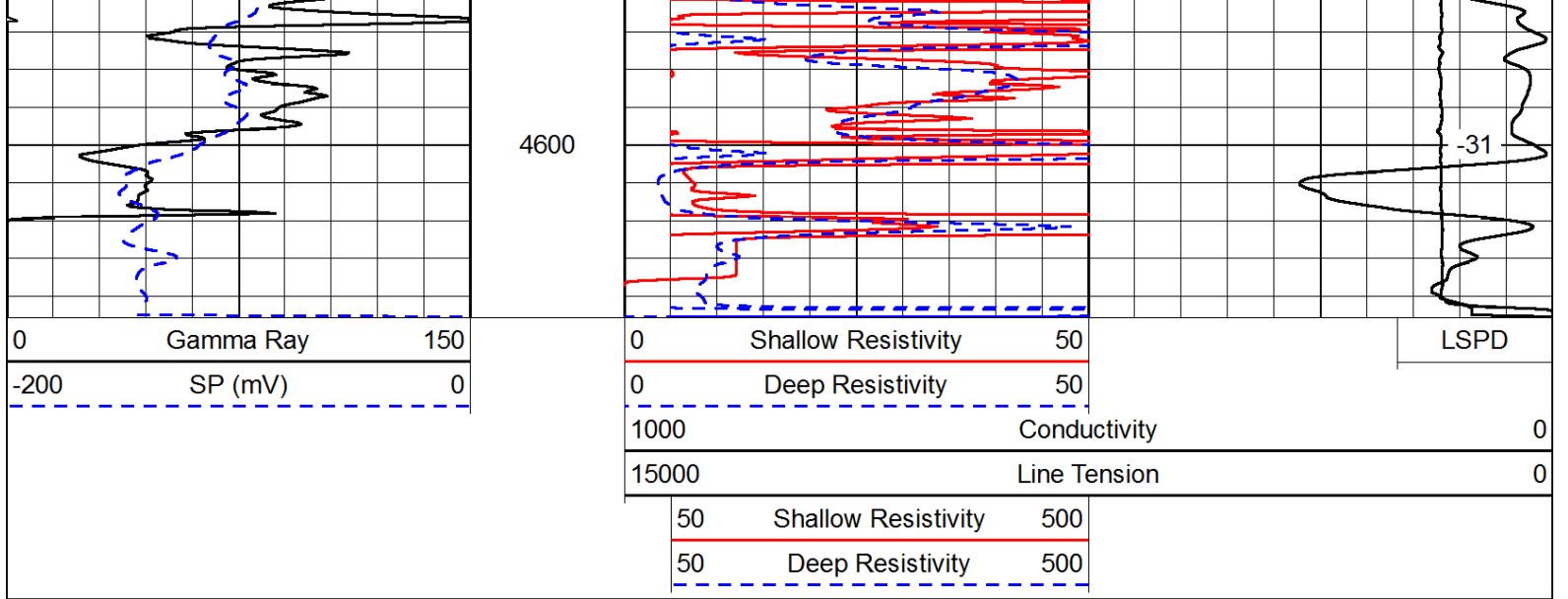












-200	SP (mV)	0
-160	RxoRt	40

0.2	Medium Resistivity	2000
0.2	Shallow Resistivity	2000
15000	Line Tension	0

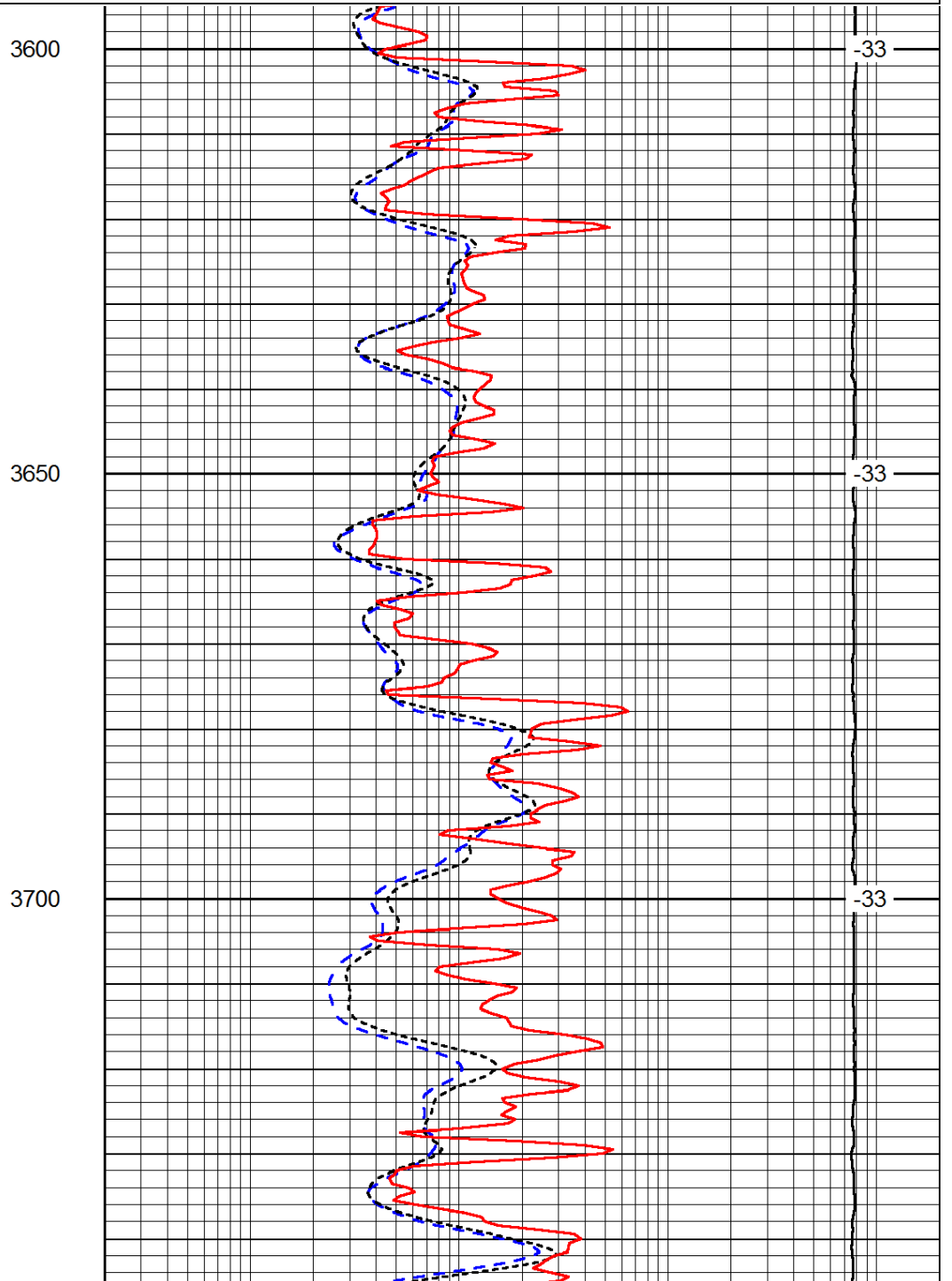
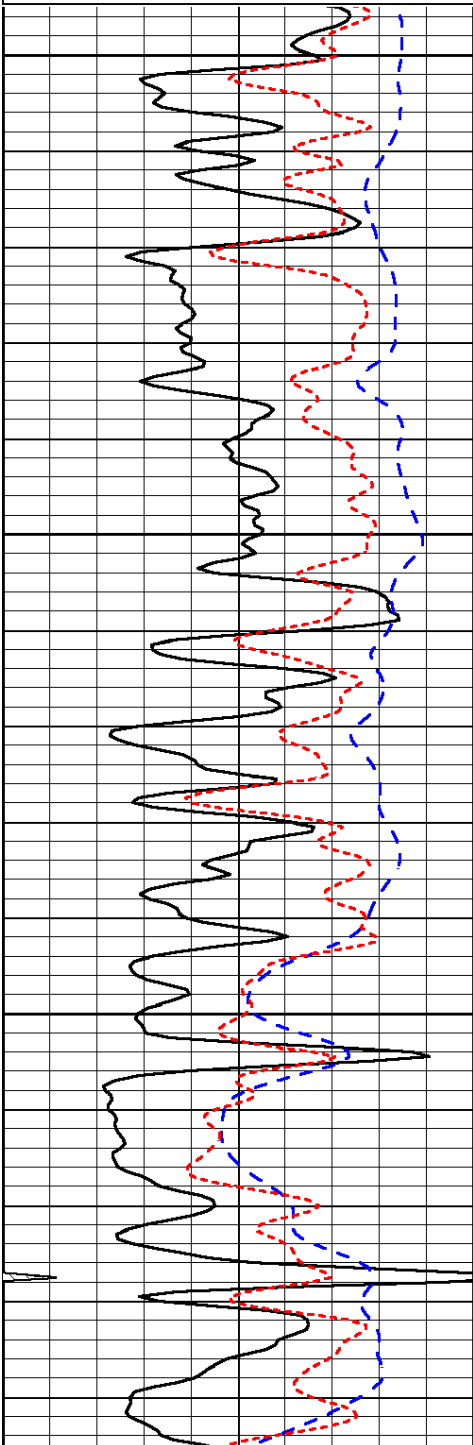
LSPD

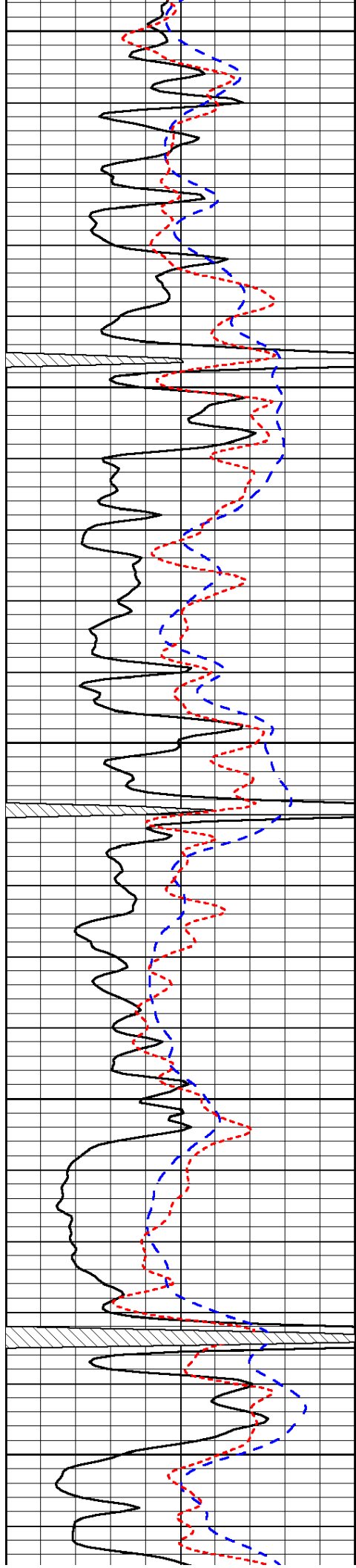
Database File: c:\warrior\data\larson_e.m. stanley unit #1-20\larson_e_m_stanley_1-20hd.db
 Dataset Pathname: DIL/larsstck
 Presentation Format: dil
 Dataset Creation: Mon Aug 04 19:04:04 2014
 Charted by: Depth in Feet scaled 1:240

0	Gamma Ray	150
-200	SP (mV)	0
-160	RxoRt	40

0.2	Deep Resistivity	2000
0.2	Medium Resistivity	2000
0.2	Shallow Resistivity	2000
15000	Line Tension	0

LSPD





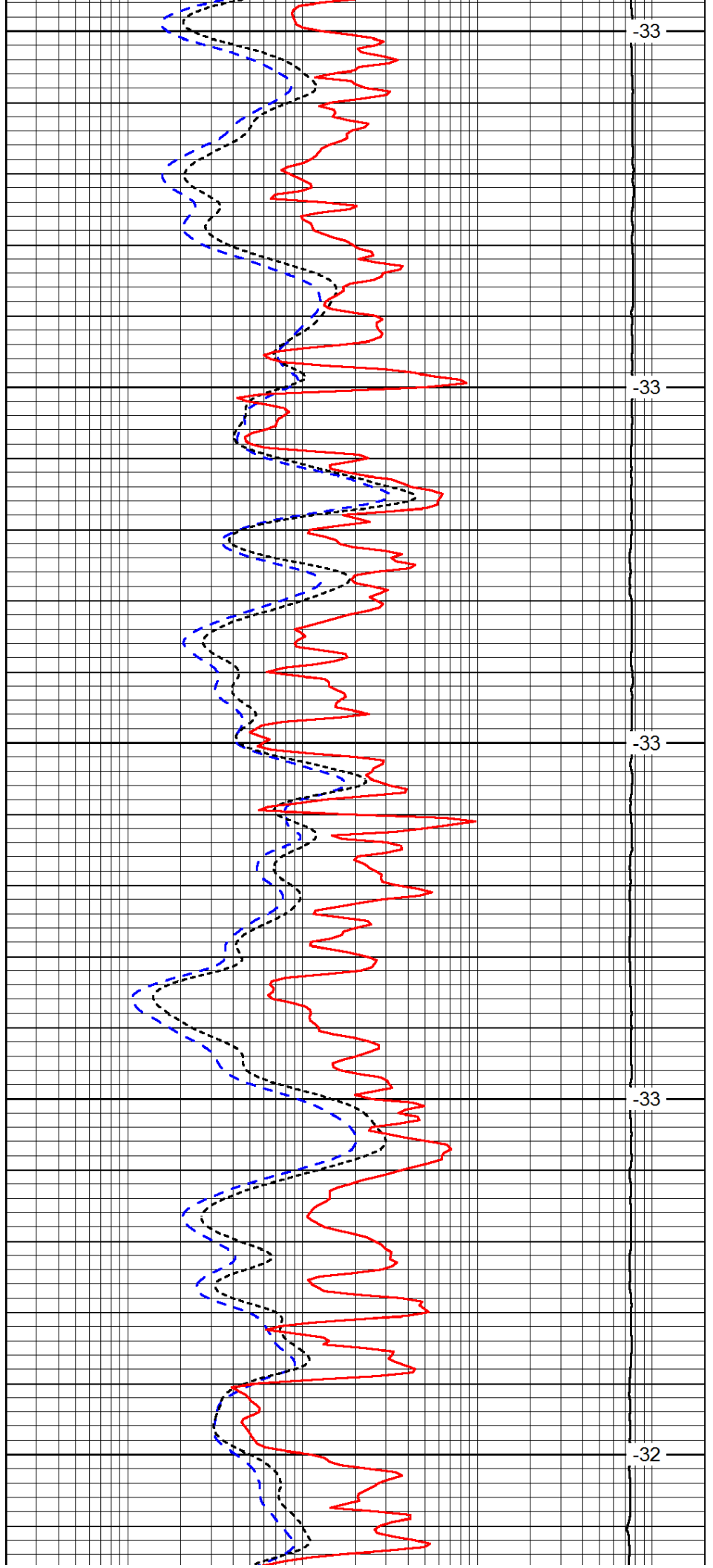
3750

3800

3850

3900

3950



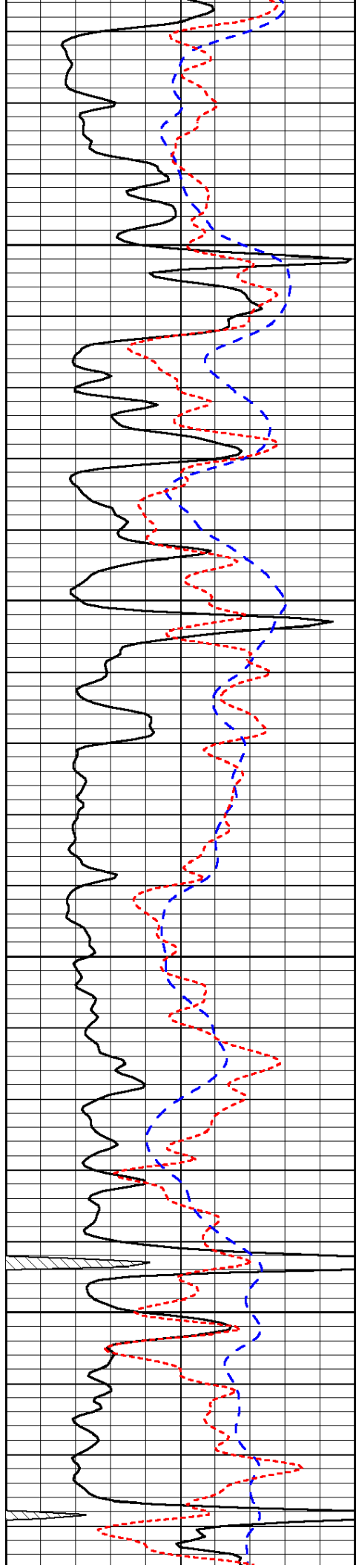
-33

-33

-33

-33

-32

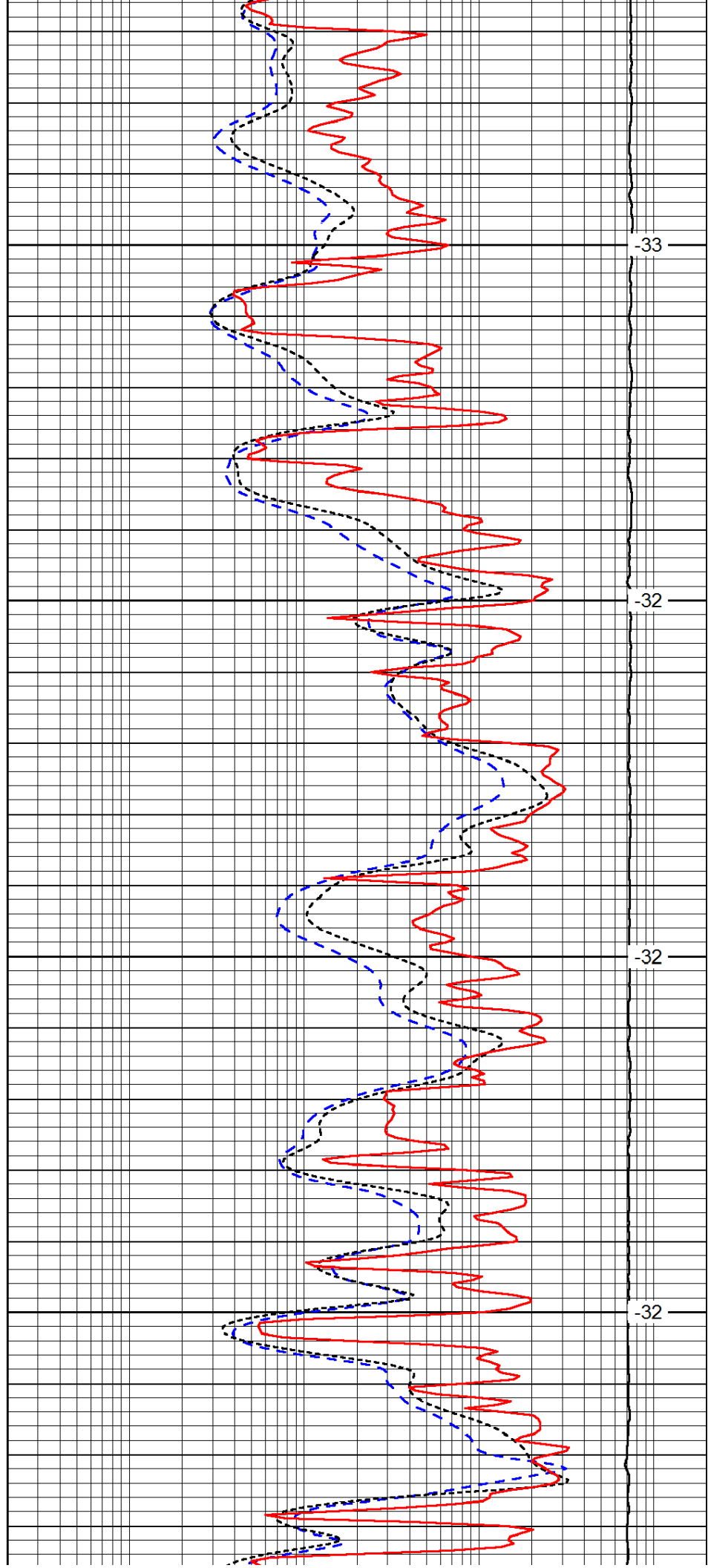


4000

4050

4100

4150

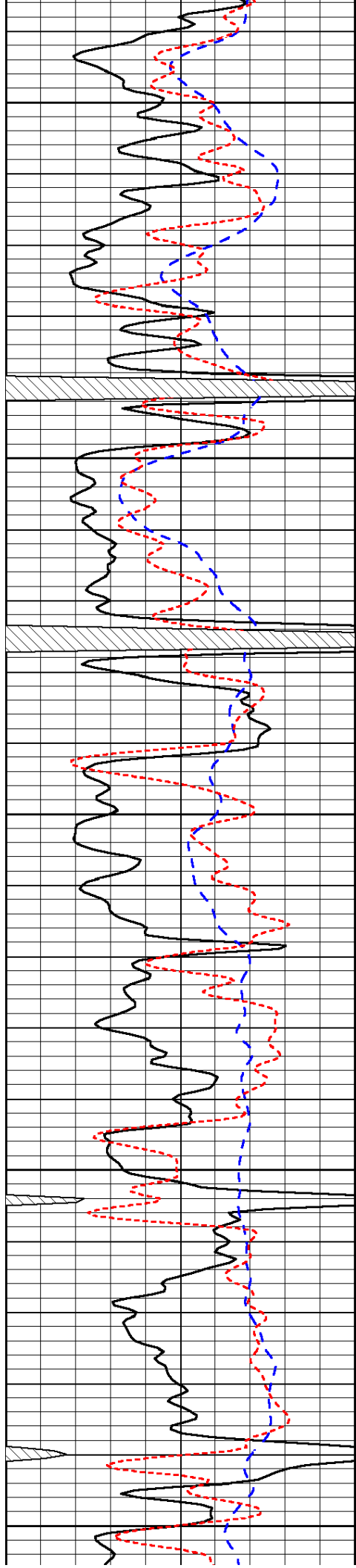


-33

-32

-32

-32



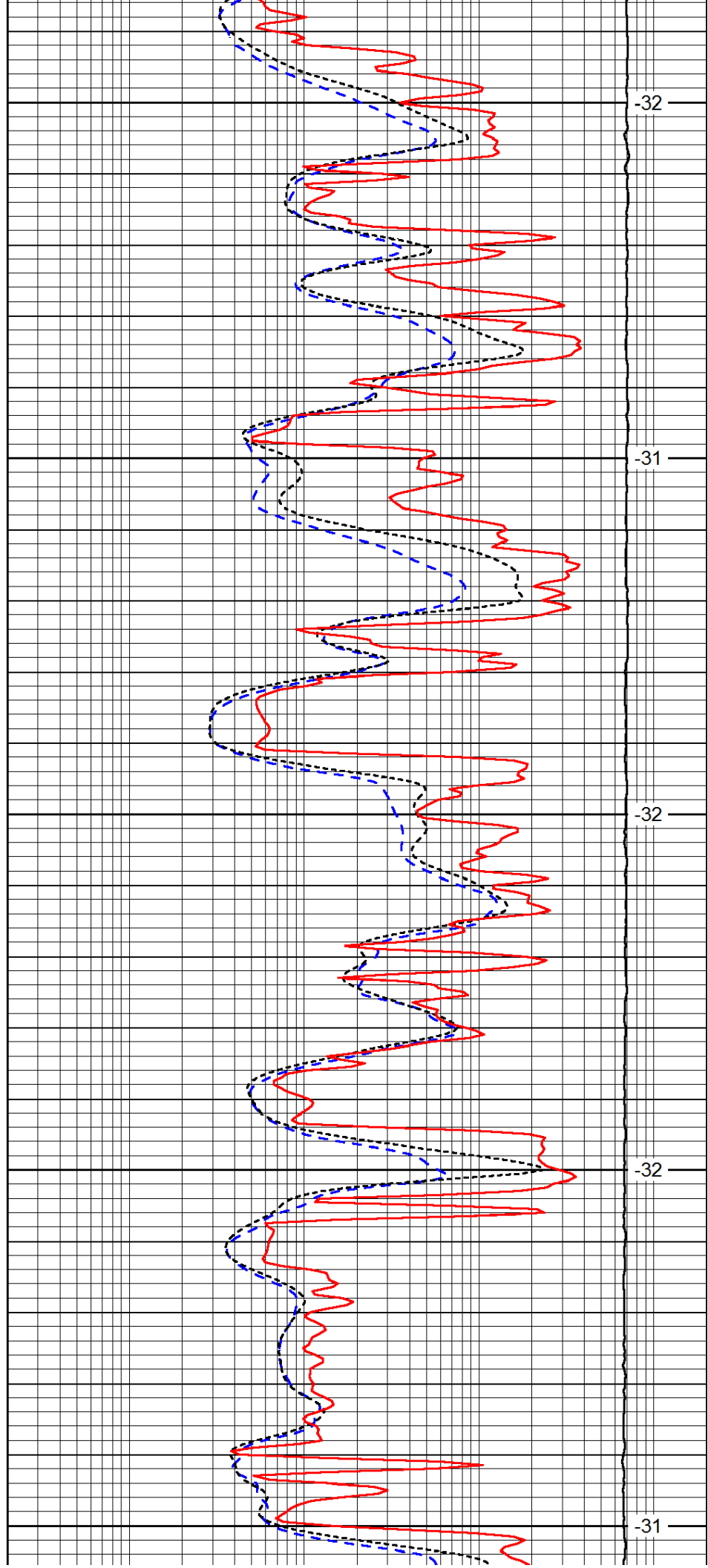
4200

4250

4300

4350

4400



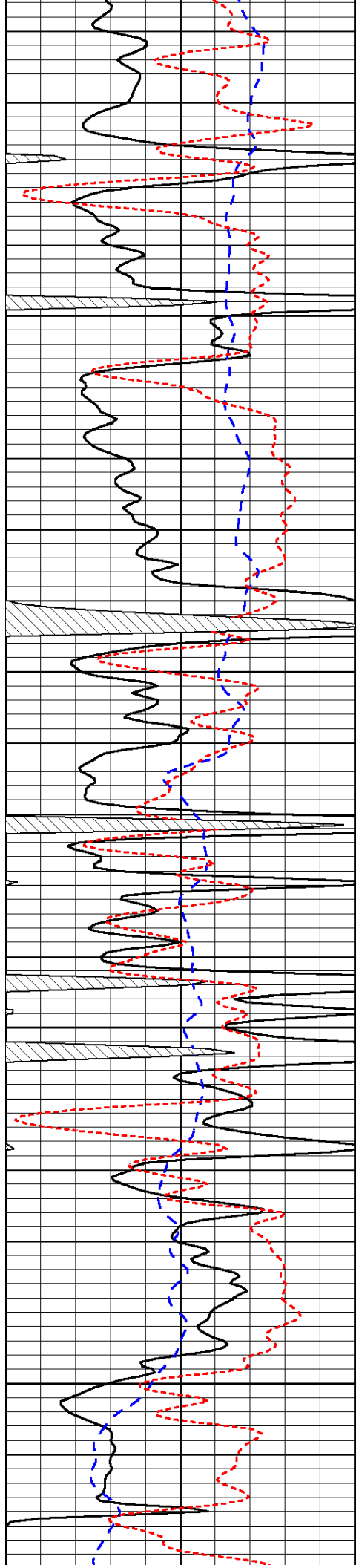
-32

-31

-32

-32

-31

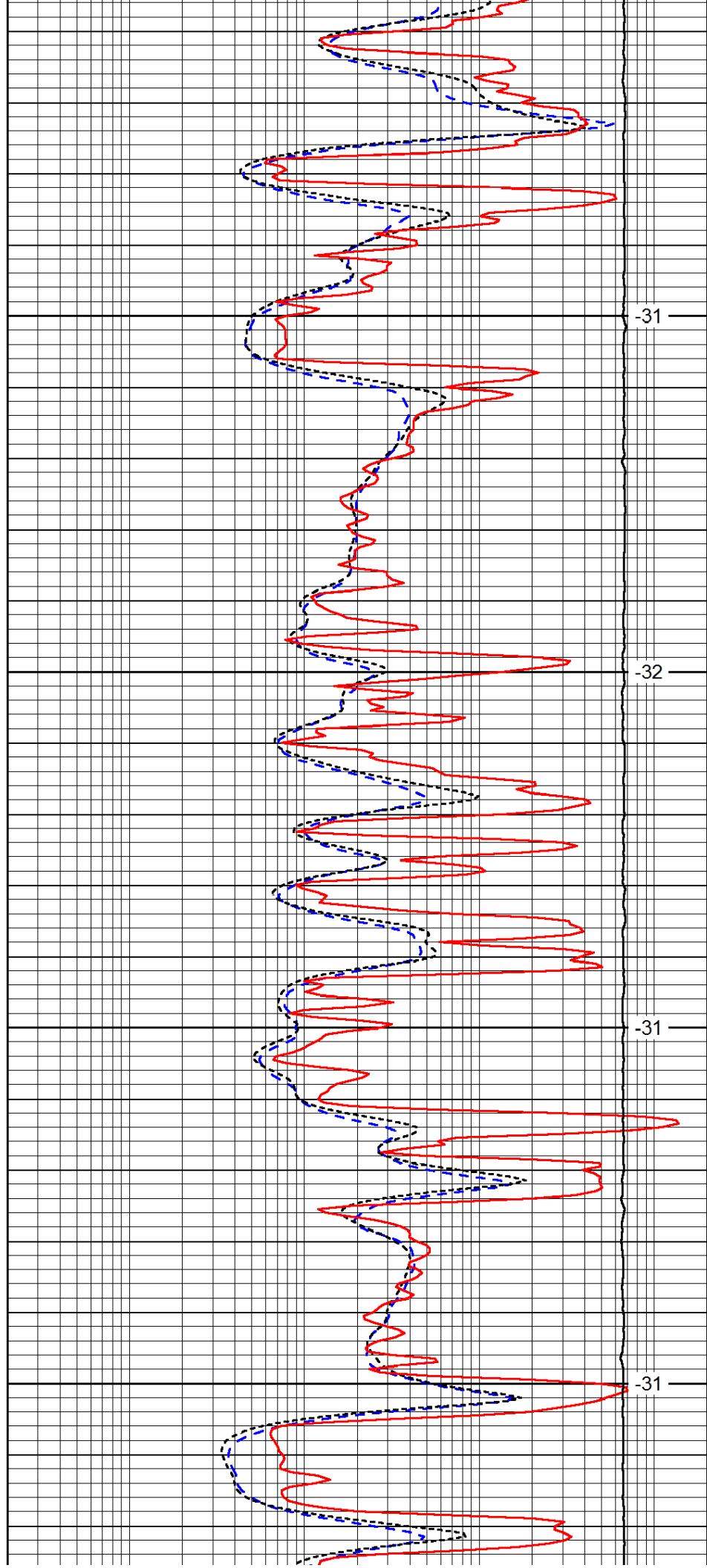


4450

4500

4550

4600

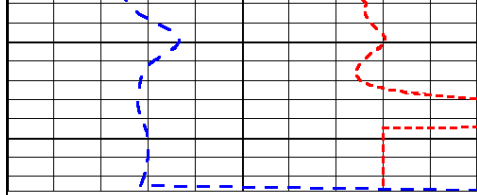


-31

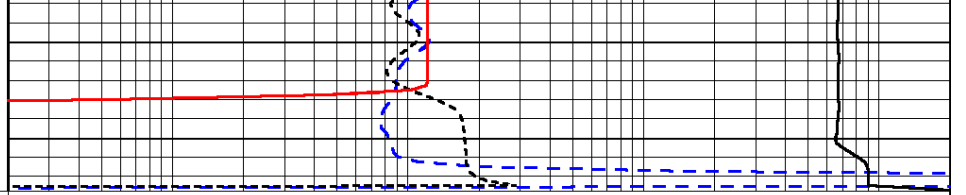
-32

-31

-31



0	Gamma Ray	150
-200	SP (mV)	0
-160	RxoRt	40



0.2	Deep Resistivity	2000
0.2	Medium Resistivity	2000
0.2	Shallow Resistivity	2000
15000	Line Tension	0

LSPD