

Company: POSTROCK ENERGY CORP.		GAMMA RAY CEMENT BOND COMPLETION LOG	
Well: HINES FARMS #22-2		Company: POSTROCK ENERGY CORP.	
Field: CHEROKEE BASIN CBM		Well: HINES FARMS #22-2	
County: NEOSHO		Field: CHEROKEE BASIN CBM	
State: KANSAS		County: NEOSHO	
State: KANSAS		State: KANSAS	
Location: 430' FWL & 980' FEI SE NW NE NE		API #: 15-133-27623-00-00	
Permanent Datum: SEC 22 TWP 28S RGE 19E		Other Services: OPEN HOLE	
Log Measured From: GL		Date: 1-31-2013	
Drilling Measured From: GL		Elevation: 930'	
Date: 2-07-2013		Elevation: 930'	
Run Number: 1 NW		K.B. D.F. 930'	
Depth Driller: 791'		Depth Logger: 728'	
Top Log Interval: 0		Bottom Logged Interval: 728'	
Fluid Level: FULL		Type Fluid: WATER	
Production Casing: 5.5" @ TD		Max. Recorded Temp: @	
Estimated Cement Top: @		Calculated Cement Top: @	
Amount & Type Cement: @		Drilling Contractor: @	
Equipment Number: 105		Location: GORRILEY R	
Recorded By: MICHELIS J		Witnessed By:	

All interpretations are inferences based on electrical or other measurements and we cannot and do not guarantee the accuracy or correctness of any interpretation, and we shall not, except in the case of gross or willful negligence on our part, be liable or responsible for any loss, costs, damages, or expenses incurred or sustained by anyone resulting from any interpretation made by any of our officers, agents or employees. These interpretations are also subject to our general terms and conditions set out in our current Price Schedule.

Comments

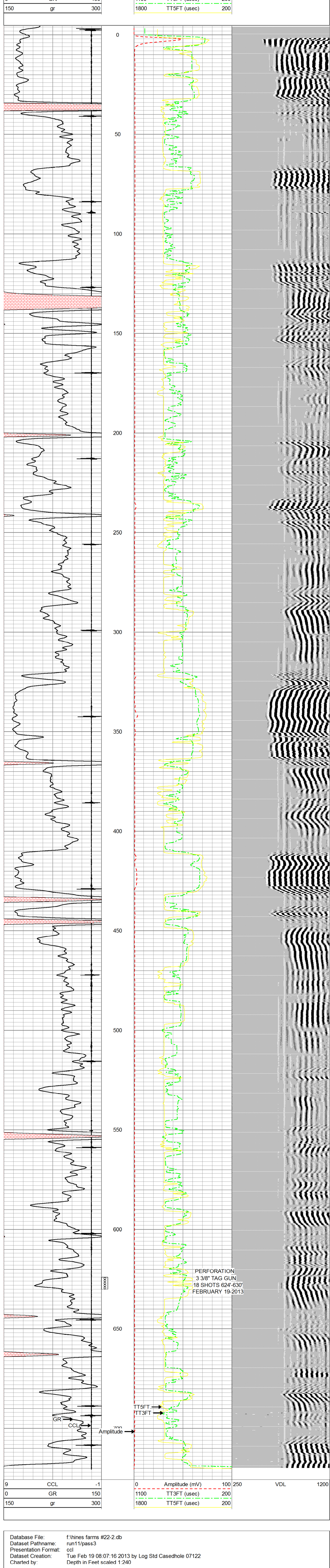
THANK YOU

Sensor	Offset (ft)	Schematic	Description	Len (ft)	OD (in)	Wt (lb)
			tekco tekco cent.	2.17	1.69	5.00
WVF3FT	6.58		CBLTEKCO-TEKCO2RCVR (TEKCO169) 1 11/16" TEKCO 2 RCVR DELWARE	9.75	1.69	50.00
WVF5FT	5.58					
WVFCAL	2.17					
WVFSYNC	2.17		tekco tekco cent.	2.17	1.69	5.00

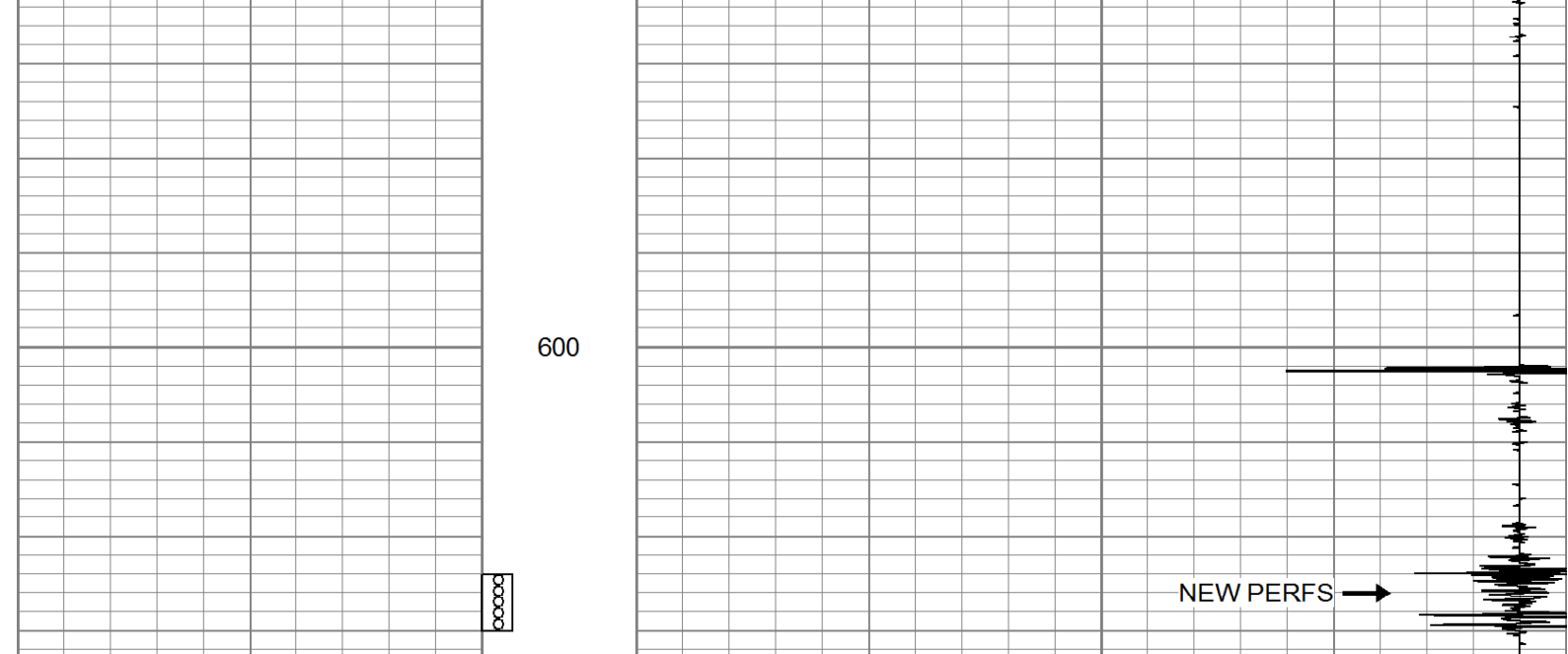
Dataset: hines farms #22-2.db: field/well/run/1/pass2MERGE  
 Total Length: 14.08 ft  
 Total Weight: 60.00 lb  
 O.D.: 1.69 in

Database File: f:\hines farms #22-2.db  
 Dataset Pathname: pass2MERGE  
 Presentation Format: scl\_cr  
 Dataset Creation: Thu Feb 07 10:22:57 2013  
 Charted by: Depth in Feet scaled 1:240

9	CCL	-1	0	Amplitude (mV)	100	250	VDL	1200
0	GR	150	1100	TT3FT (usec)	200			
150	gr	300	1800	TT5FT (usec)	200			



Database File: f:\hines farms #22-2.db  
 Dataset Pathname: run11/pass3  
 Presentation Format: ccl  
 Dataset Creation: Tue Feb 19 08:07:16 2013 by Log Std Casedhole 07122  
 Charted by: Depth in Feet scaled 1:240



Company: POSTROCK ENERGY CORP.		Date: 2-07-2013
Well: HINES FARMS #22-2		
Field: CHEROKEE BASIN CBM		
County: NEOSHO SECTION 22 TWP 28S RGE 19E		
State: KANSAS		

