



MIDWEST SURVEYS
 LOGGING - PERFORATING - CONSULTING SERVICES
 P.O. Box 688, Osawatomie, KS 66064
 913.755.2128

GAMMA RAY / NEUTRON / CCL

File No.

Company **D.E. Exploration, Inc.**

Well **Mackey No. 2**

Field **Edgerton - Southwest**

County **Johnson** State **Kansas**

Location **5040 FSL & 200' FEL**

Other Services **Perforate**

Sec. **28** Twp. **14S** Rge. **22E**

Permament Datum **GL** Elevation **NA**

Log Measured From **GL** K.B. **NA**

Drilling Measured From **GL** D.F. **NA**

Date **04-09-2013** Elevation **GL, NA**

Run Number **One**

Depth Logger **990.0**

Bottom Logged Interval **893.5**

Top Log Interval **20.0**

Fluid Level **Fill**

Type Fluid **Water**

Density / Viscosity **NA**

Salinity - PPM Cl **NA**

Max. Recorded Temp **NA**

Estimated Cement Top **0.0**

Equipment No. **107** Location **Osawatomie**

Recorded By **Steve Winkelsch**

Missed By **Doug Evans**

BOREHOLE RECORD		CASING RECORD					
RUN	BIT	NO.	TO	SIZE	WTG.	FROM	TO
One	9.875"	0.0	22.0	7.00"	17.0#	0.0	22.0
Two	5.925"	22.0	990.0	2.875"	6.5#	0.0	931.06
					Set	At	898.51

<<< Fold Here >>>

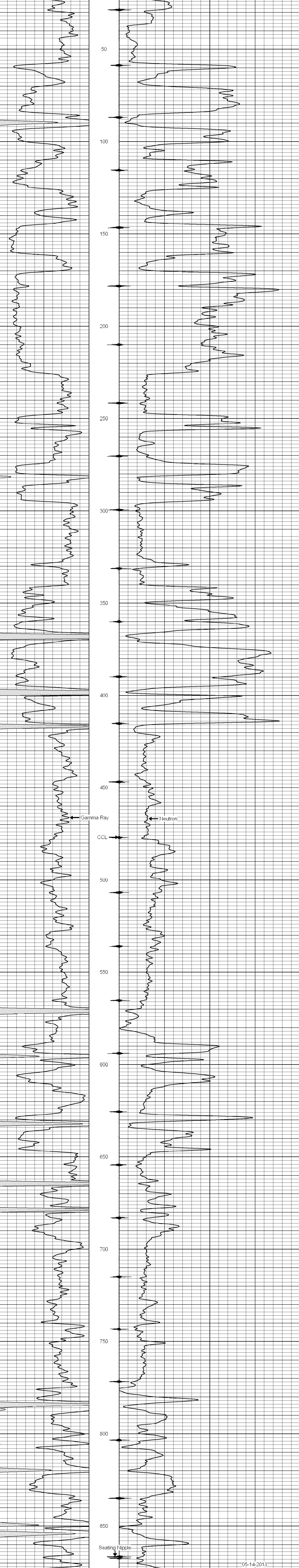
All interpretations are opinions based on inferences from electrical or other measurements and we cannot and do not guarantee the accuracy or correctness of any interpretation, and we shall not, except in the case of gross or willful negligence on our part, be liable or responsible for any loss, costs, damages, or expenses incurred or sustained by anyone resulting from any interpretation made by any of our officers, agents or employees. These interpretations are also subject to our general terms and conditions set out in our current Price Schedule.

Comments

Drilling Contractor :
 Town Oilfield Services, Inc.

Database File: mackey2.db
 Dataset Pathname: pass1
 Presentation Format: gr-n-ccl
 Dataset Creation: Tue Apr 09 15:47:07 2013 by Log SCH 111116
 Charted by: Depth in Feet scaled 1:240

0 Gamma Ray (cps) 150 10 Neutron (cps) 2100



05-14-2013
 Perforated Interval
 873.0 - 883.0 30 Perfs
 2" DML RTG

0 Gamma Ray (cps) 150 10 Neutron (cps) 2100