

MIDWEST SURVEYS
 LOGGING - PERFORATING - CONSULTING SERVICES
 P.O. Box 688, Osawatomie, KS 66064
 913.755.2128

GAMMA RAY / NEUTRON / CCL

File No. _____

Company **D.E. Exploration, Inc.**

Well **Mackey No - 6**

Field **Edgerton - Southwest**

County **Johnson** State **Kansas**

Location **4160' FSL & 200' FEL**

SE-SE-N-E-NE

Other Services

Perforate

Sec. 28 Twp. 14S Rge. 22E

Permanent Datum GL Elevation NA

Log Measured From GL

Drilling Measured From GL

Date 05-14-2013

Run Number One

Depth Driller 960.0

Bottom Logged Interval 897.0

Top Log Interval 896.0

Fluid Level 20.0

Fluid Type Water

Density / Viscosity NA

Salinity - PPM Cl NA

Max Recorded Temp NA

Estimated Cement Top 0.0

Equipment No. Location 102 Osawatomie

Recorded By Gary Windisch

Missed By Doug Evans

BORE-HOLE RECORD

RUN No. BIT FROM TO

One 9.875" 0.0 22.0

Two 5.925" 22.0 960.0

CASING RECORD

SIZE WGT. FROM TO

7.00" 17.0# 0.0 22.0

2.875" 6.5# 0.0 922.35

8.00" 20.0# 0.0 960.0

8.00" 20.0# 0.0 960.0

8.00" 20.0# 0.0 960.0

8.00" 20.0# 0.0 960.0

8.00" 20.0# 0.0 960.0

8.00" 20.0# 0.0 960.0

8.00" 20.0# 0.0 960.0

8.00" 20.0# 0.0 960.0

8.00" 20.0# 0.0 960.0

8.00" 20.0# 0.0 960.0

8.00" 20.0# 0.0 960.0

8.00" 20.0# 0.0 960.0

8.00" 20.0# 0.0 960.0

8.00" 20.0# 0.0 960.0

8.00" 20.0# 0.0 960.0

8.00" 20.0# 0.0 960.0

8.00" 20.0# 0.0 960.0

8.00" 20.0# 0.0 960.0

8.00" 20.0# 0.0 960.0

8.00" 20.0# 0.0 960.0

8.00" 20.0# 0.0 960.0

8.00" 20.0# 0.0 960.0

8.00" 20.0# 0.0 960.0

8.00" 20.0# 0.0 960.0

8.00" 20.0# 0.0 960.0

8.00" 20.0# 0.0 960.0

8.00" 20.0# 0.0 960.0

8.00" 20.0# 0.0 960.0

8.00" 20.0# 0.0 960.0

8.00" 20.0# 0.0 960.0

8.00" 20.0# 0.0 960.0

8.00" 20.0# 0.0 960.0

8.00" 20.0# 0.0 960.0

8.00" 20.0# 0.0 960.0

8.00" 20.0# 0.0 960.0

8.00" 20.0# 0.0 960.0

8.00" 20.0# 0.0 960.0

8.00" 20.0# 0.0 960.0

8.00" 20.0# 0.0 960.0

8.00" 20.0# 0.0 960.0

8.00" 20.0# 0.0 960.0

8.00" 20.0# 0.0 960.0

8.00" 20.0# 0.0 960.0

8.00" 20.0# 0.0 960.0

8.00" 20.0# 0.0 960.0

8.00" 20.0# 0.0 960.0

8.00" 20.0# 0.0 960.0

8.00" 20.0# 0.0 960.0

8.00" 20.0# 0.0 960.0

8.00" 20.0# 0.0 960.0

8.00" 20.0# 0.0 960.0

8.00" 20.0# 0.0 960.0

8.00" 20.0# 0.0 960.0

8.00" 20.0# 0.0 960.0

8.00" 20.0# 0.0 960.0

8.00" 20.0# 0.0 960.0

8.00" 20.0# 0.0 960.0

8.00" 20.0# 0.0 960.0

8.00" 20.0# 0.0 960.0

8.00" 20.0# 0.0 960.0

8.00" 20.0# 0.0 960.0

8.00" 20.0# 0.0 960.0

8.00" 20.0# 0.0 960.0

8.00" 20.0# 0.0 960.0

8.00" 20.0# 0.0 960.0

8.00" 20.0# 0.0 960.0

8.00" 20.0# 0.0 960.0

8.00" 20.0# 0.0 960.0

8.00" 20.0# 0.0 960.0

8.00" 20.0# 0.0 960.0

8.00" 20.0# 0.0 960.0

8.00" 20.0# 0.0 960.0

8.00" 20.0# 0.0 960.0

8.00" 20.0# 0.0 960.0

8.00" 20.0# 0.0 960.0

8.00" 20.0# 0.0 960.0

8.00" 20.0# 0.0 960.0

8.00" 20.0# 0.0 960.0

8.00" 20.0# 0.0 960.0

8.00" 20.0# 0.0 960.0

8.00" 20.0# 0.0 960.0

8.00" 20.0# 0.0 960.0

8.00" 20.0# 0.0 960.0

8.00" 20.0# 0.0 960.0

8.00" 20.0# 0.0 960.0

8.00" 20.0# 0.0 960.0

8.00" 20.0# 0.0 960.0

8.00" 20.0# 0.0 960.0

8.00" 20.0# 0.0 960.0

8.00" 20.0# 0.0 960.0

8.00" 20.0# 0.0 960.0

8.00" 20.0# 0.0 960.0

8.00" 20.0# 0.0 960.0

8.00" 20.0# 0.0 960.0

8.00" 20.0# 0.0 960.0

8.00" 20.0# 0.0 960.0

8.00" 20.0# 0.0 960.0

8.00" 20.0# 0.0 960.0

8.00" 20.0# 0.0 960.0

8.00" 20.0# 0.0 960.0

8.00" 20.0# 0.0 960.0

8.00" 20.0# 0.0 960.0

8.00" 20.0# 0.0 960.0

8.00" 20.0# 0.0 960.0

8.00" 20.0# 0.0 960.0

8.00" 20.0# 0.0 960.0

8.00" 20.0# 0.0 960.0

8.00" 20.0# 0.0 960.0

8.00" 20.0# 0.0 960.0

8.00" 20.0# 0.0 960.0

8.00" 20.0# 0.0 960.0

8.00" 20.0# 0.0 960.0

8.00" 20.0# 0.0 960.0

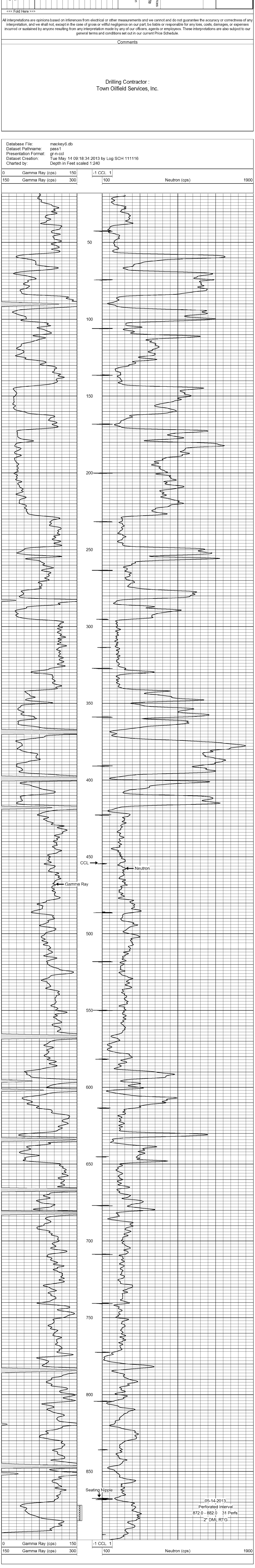
8.00" 20.0# 0.0 960.0

8.00" 20.0# 0.0 960.0

8.00" 20.0# 0.0 960.0

8.00" 20.0# 0.0 960.0

8.00" 20.0# 0.0 960.0



05-14-2013
 Perforated Interval
 872.0 - 882.0 31 Perfs
 2" DML RTG

