

GAMMA RAY
CEMENT BOND
COMPLETION LOG

Company: POSTROCK ENERGY CORP.
Well: SHOCKLEY, MARJORIE L. #6-3
Field: CHEROKEE BASIN CBM

County: WILSON
State: KANSAS

Location: 1450' FUL & 1025' FEL
NW/4 SE/4 NE
SEC 6 TWP 28S RGE 17E
Elevation: 1005'

Company: POSTROCK ENERGY CORP.
Well: SHOCKLEY, MARJORIE L. #6-3
Field: CHEROKEE BASIN CBM

County: WILSON
State: KANSAS

Location: 1450' FUL & 1025' FEL
NW/4 SE/4 NE
SEC 6 TWP 28S RGE 17E
Elevation: 1005'

Permanant Datum: GL
Log Measured From: GL
Drilling Measured From: GL
Date: 2-05-2013
Run Number: 1 NW
Depth Diner: 1200'

Top Log Interval: 0
Bottom Logged Interval: 1183.5'
Fluid Level: FULL

Type Fluid: WATER
Production Casing: 5.5" @ TD
Max. Recorded Temp.:
Estimated Cement Top:
Calculated Cement Top:
Amount & Type Cement:
Drilling Contractor:
Equipment Number: 105
Location: GORBLEY R.
Recorded By: MICHELS, J.

<<< Fold Here >>>

All interpretations are opinions based on inferences from electrical or other measurements and we cannot and do not guarantee the accuracy or correctness of any interpretation, and we shall not, except in the case of gross or willful negligence on our part, be liable or responsible for any loss, costs, damages, or expenses incurred or sustained by anyone resulting from any interpretation made by any of our officers, agents or employees. These interpretations are also subject to our general terms and conditions set out in our current Price Schedule.

Comments

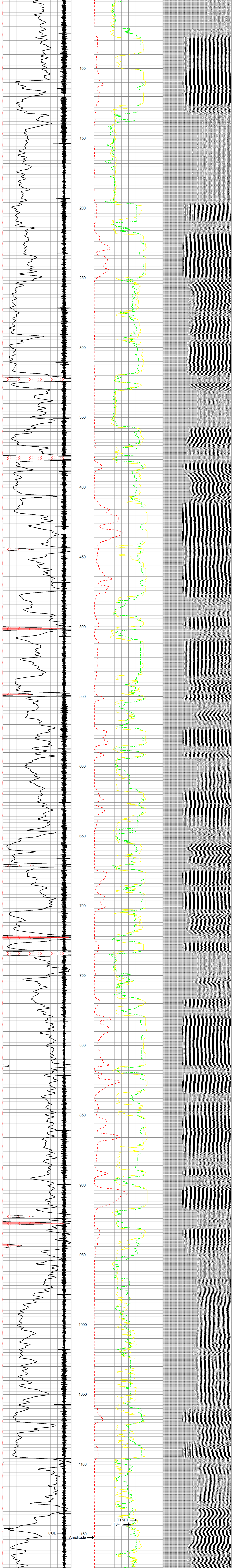
THANK YOU

Sensor	Offset (ft)	Schematic	Description	Len (ft)	OD (in)	Wt (lb)
			tekco tekco cent.	2.17	1.69	5.00
WVF3FT	6.58		CBLTEKCO-TEKCO2RCVR (TEKCO169) 1 1/16" TEKCO 2 RCVR DELWARE	9.75	1.69	50.00
WVF5FT	5.58					
WVFCAL	2.17		tekco tekco cent.	2.17	1.69	5.00
WVFSYNC	2.17					

Dataset: shockley marjorie l #6-3.db: field/well/run1/pass2MERGE
Total Length: 14.08 ft
Total Weight: 60.00 lb
O.D.: 1.69 in

Database File: e:\shockley marjorie l #6-3.db
Dataset Pathname: pass2MERGE
Presentation Format: scbl_dr
Dataset Creation: Tue Feb 05 13:22:15 2013
Charted by: Depth in Feet scaled 1.240

9	CCL	-1	0	Amplitude (mV)	100	300	VDL	1200
0	GR	150	1100	TT3FT (usec)	200			
150	gr	300	1800	TT5FT (usec)	200			



9	CCL	-1	0	Amplitude (mV)	100	300	VDL	1200
0	GR	150	1100	TT3FT (usec)	200			
150	gr	300	1800	TT5FT (usec)	200			



Company: POSTROCK ENERGY CORP.
Well: SHOCKLEY, MARJORIE L. #6-3
Field: CHEROKEE BASIN CBM
County: WILSON SECTION 6 TWP 28S RGE 17E
State: KANSAS
Date: 2-05-2013