



Pioneer Energy Services

Microresistivity Log

15-009-25,811-00-00

API No.

Company **Webco Oil Company, Inc.**

Well **Weber 'A' #13**

Field **Kraft-Prusa**

County **Barton** State **Kansas**

Location

S2-SE-SE-SW
2445' FNL & 2310' FWL

Sec: 12 Twp: 16S Rge: 12W

Permanent Datum **Ground Level** Elevation **1889**
 Log Measured From **Kelly Bushing** 7 Ft. Above Perm. Datum
 Drilling Measured From **Kelly Bushing**

Other Services
CNL/CDL
DIL
Elevation
K.B. 1896
D.F. 1889
G.L. 1889

Date	2/18/2013
Run Number	Two
Depth Driller	3370
Depth Logger	3370
Bottom Logged Interval	3369
Top Log Interval	2600
Casing Driller	8.625 @ 388
Casing Logger	384
Bit Size	7.875
Type Fluid in Hole	Chemical
Salinity, ppm CL	3000
Density / Viscosity	9.4 49
pH / Fluid Loss	8.5 8.8
Source of Sample	Flowline
Rm @ Meas. Temp	2.0 @ 50
Rmf @ Meas. Temp	1.5 @ 50
Rmc @ Meas. Temp	2.7 @ 50
Source of Rmf / Rmc	Charts
Rm @ BHT	.91 @ 110
Operating Rig Time	3 1/2 Hours
Max Rec. Temp. F	110
Equipment Number	15
Location	Hays
Recorded By	J. Hennickson
Witnessed By	Kurt Talbott
	D. Martin

<<< Fold Here >>>

All interpretations are opinions based on inferences from electrical or other measurements and we cannot and do not guarantee the accuracy or correctness of any interpretation, and we shall not, except in the case of gross or willful negligence on our part, be liable or responsible for any loss, costs, damages, or expenses incurred or sustained by anyone resulting from any interpretation made by any of our officers, agents or employees. These interpretations are also subject to our general terms and conditions set out in our current Price Schedule.

Comments

Thank you for using Pioneer Energy Services
www.pioneerenergy.com
 785 625 3858

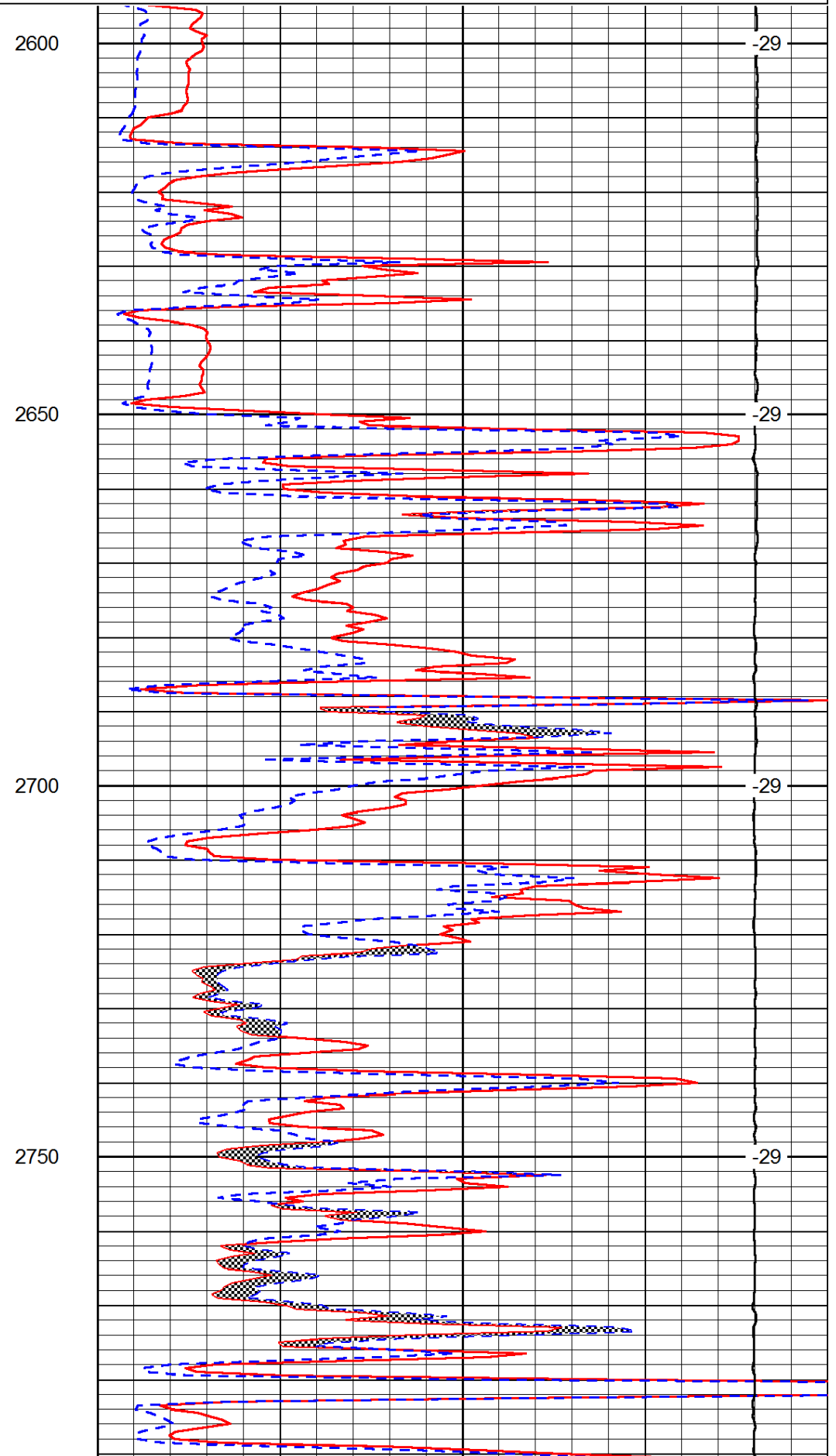
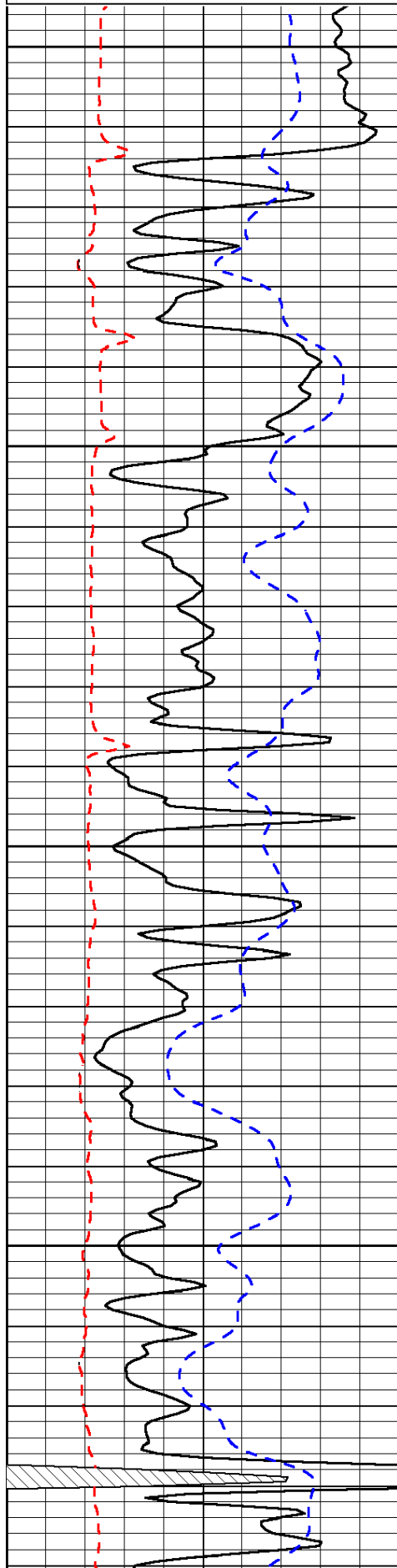
Beaver Kansas
 3 East, 2 1/2 North, East Into

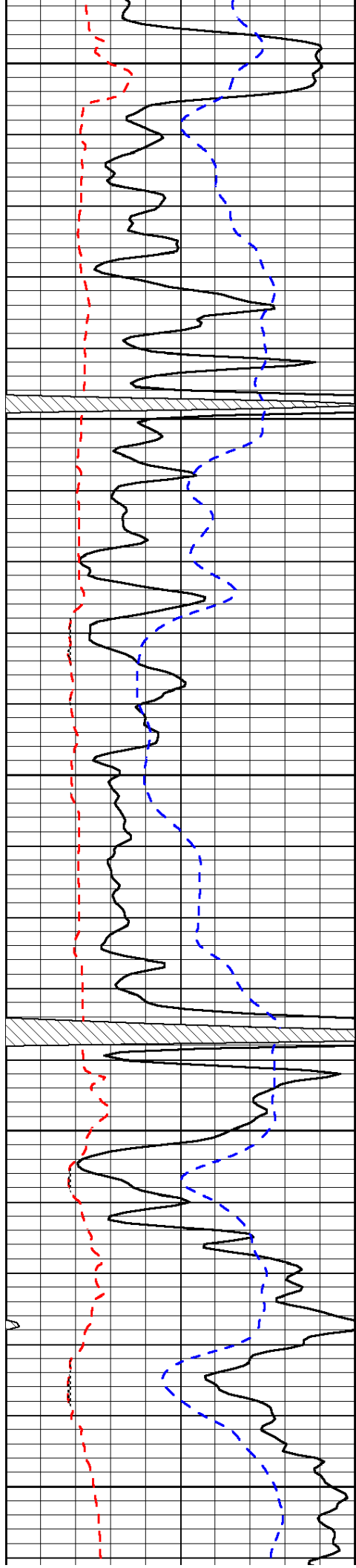
Database File: c:\warrior\data\webco oil_weber 'a' #13\webco_weber_a_13hd.db
 Dataset Pathname: DIL/webstk
 Presentation Format: micro
 Dataset Creation: Mon Feb 18 18:59:51 2013
 Charted by: Depth in Feet scaled 1:240

0	Gamma Ray	150
6	Micro Log Caliper (GAPI)	16
-200	SP (mV)	0

0	Micro Inverse 1 X 1	40
0	Micro Normal 2"	40
15000	Line Weight	0

LSPD





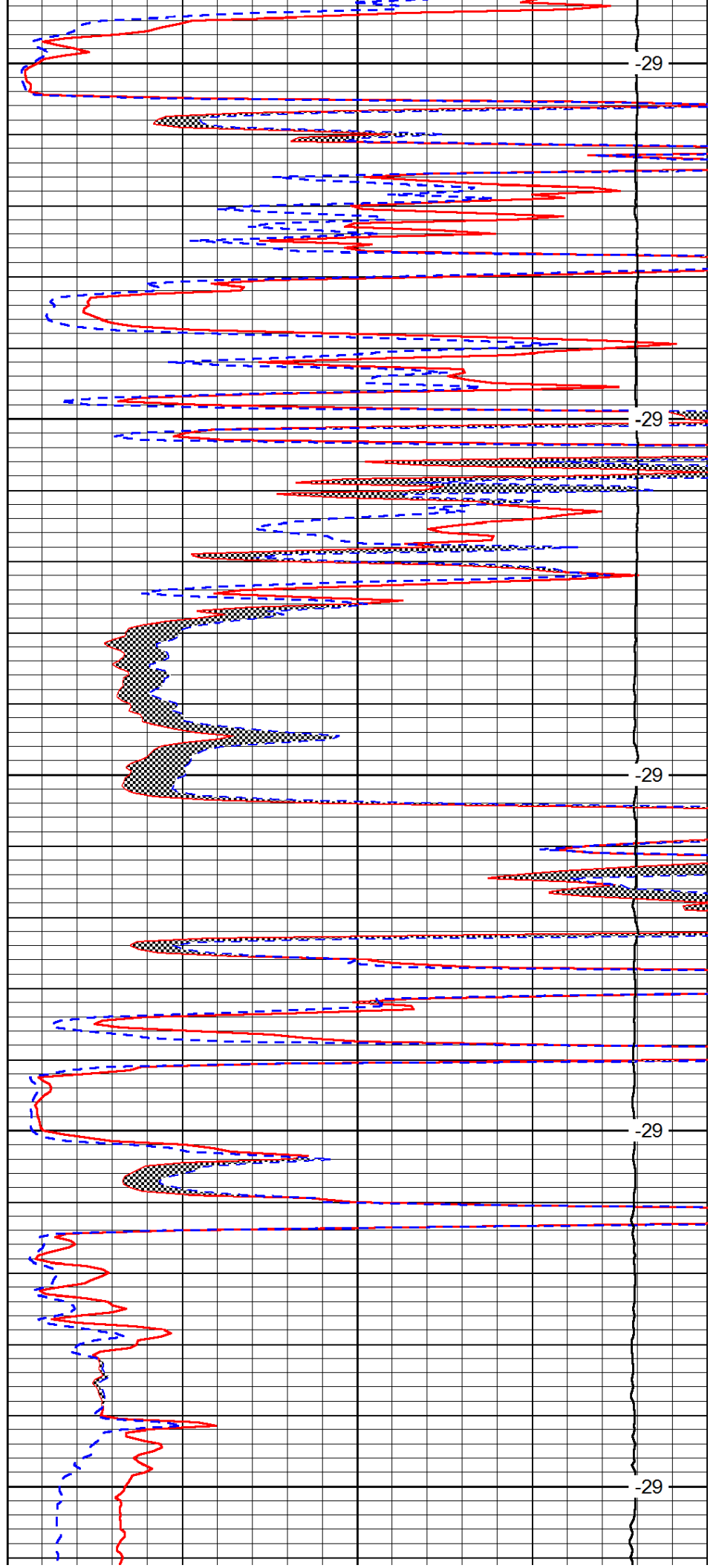
2800

2850

2900

2950

3000



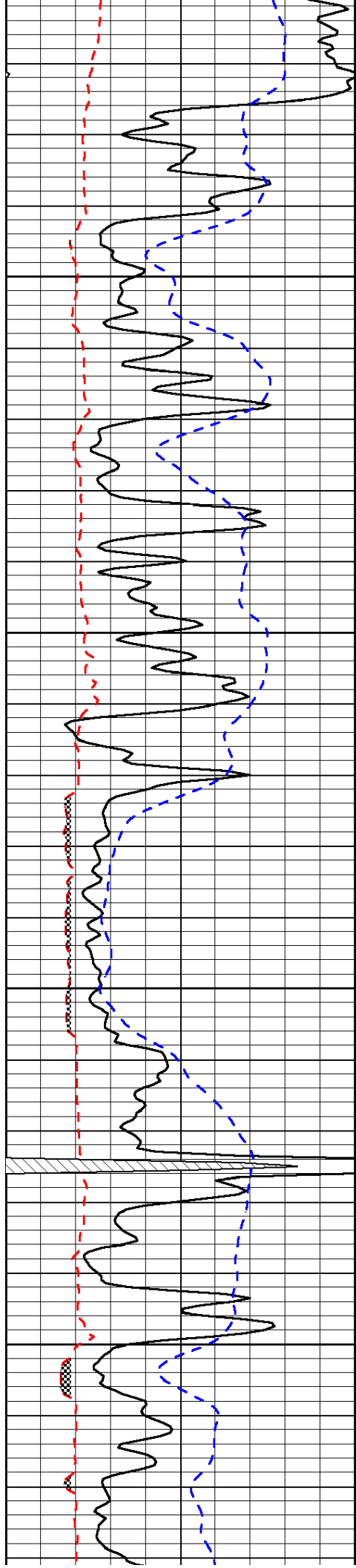
-29

-29

-29

-29

-29

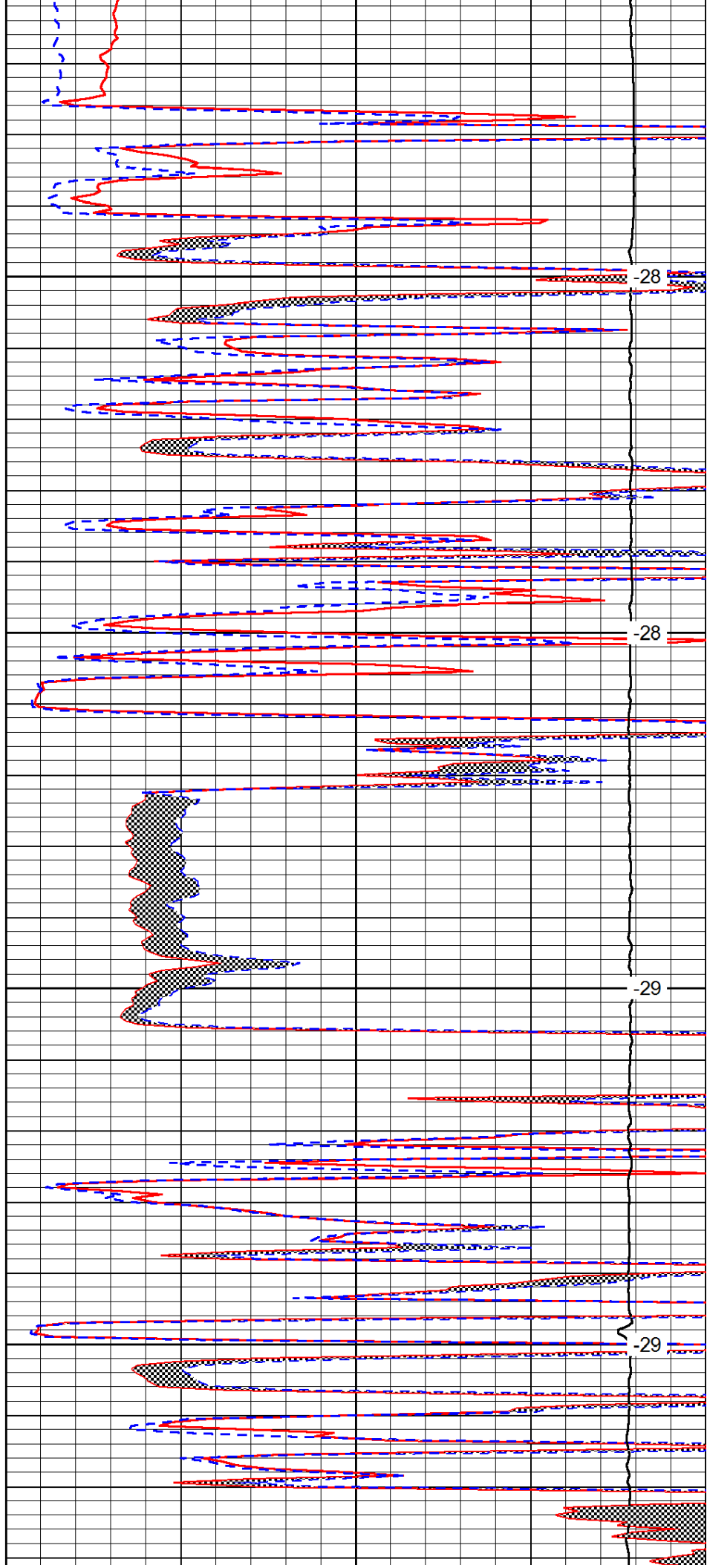


3050

3100

3150

3200

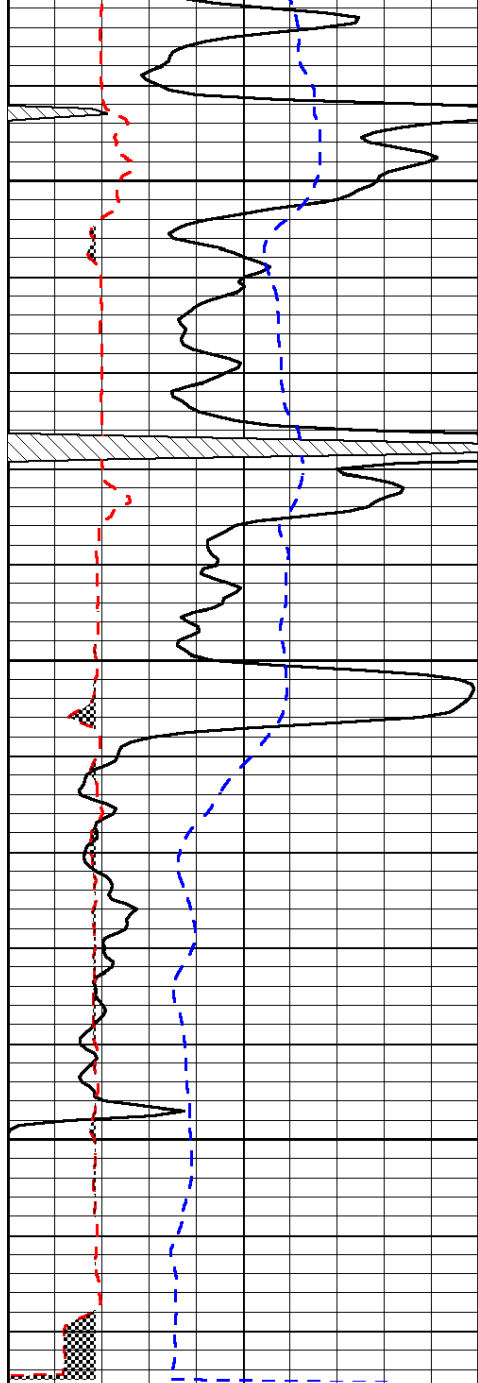


-28

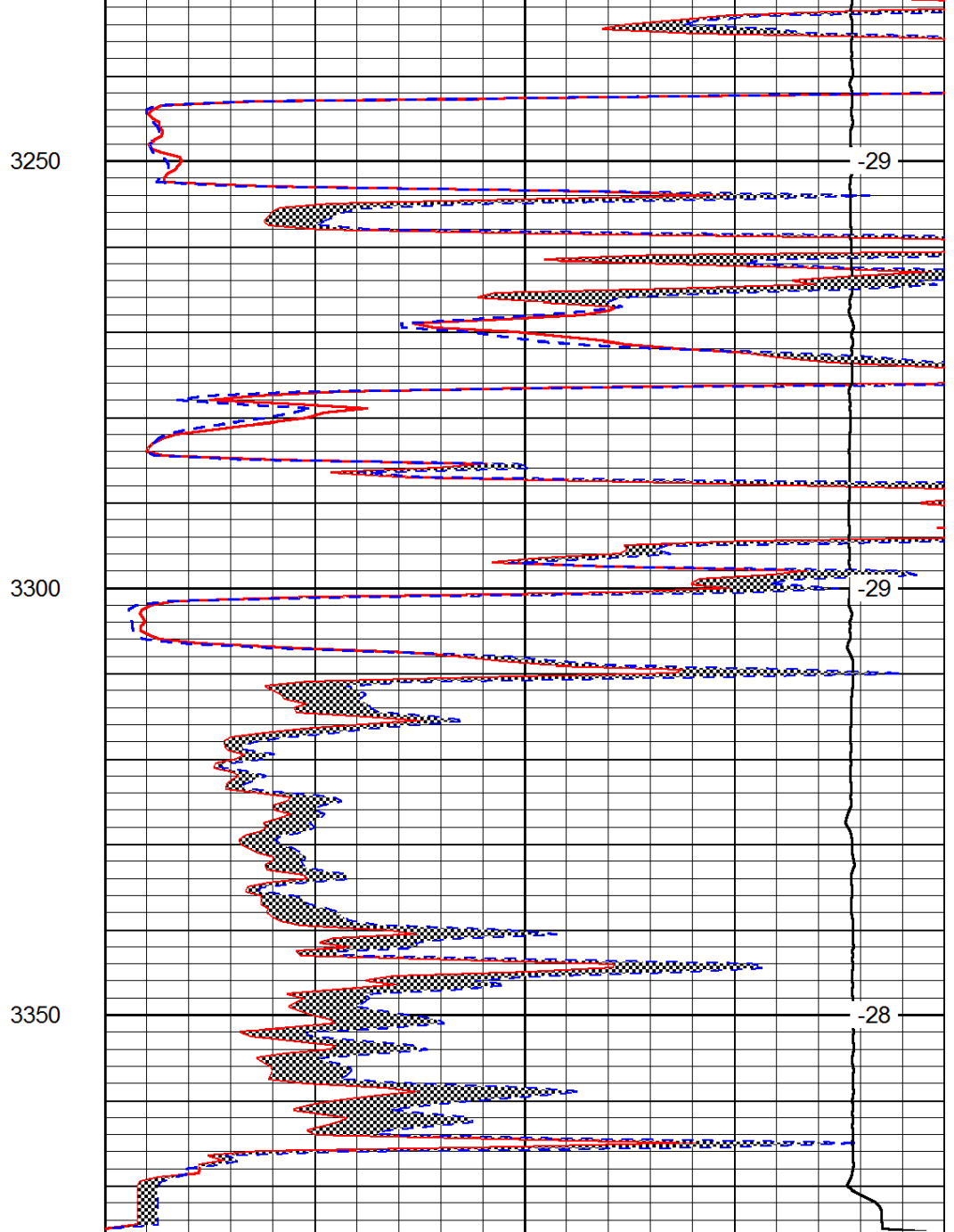
-28

-29

-29



0	Gamma Ray	150
6	Micro Log Caliper (GAPI)	16
-200	SP (mV)	0



0	Micro Inverse 1 X 1	40
0	Micro Normal 2''	40
15000	Line Weight	0

LSPD