



Pioneer Energy Services

## Dual Compensated Porosity Log

15-009-25,811-00-00

API No.	Company <b>Webco Oil Company, Inc.</b>		
	Well <b>Weber 'A' #13</b>		
	Field <b>Kraft-Prusa</b>		
	County <b>Barton</b>		State <b>Kansas</b>
	Location <b>S2-SE-SE-SW 2445' FNL &amp; 2310' FWL</b>		Other Services DIL MEL
	Sec: <b>12</b>	Twp: <b>16S</b>	Rge: <b>12W</b>
Permanent Datum	Ground Level	Elevation	1889
Log Measured From	Kelly Bushing	7 Ft. Above Perm. Datum	
Drilling Measured From	Kelly Bushing		
Date	2/18/2013		
Run Number	One		
Type Log	CNL / CDL		
Depth Driller	3370		
Depth Logger	3370		
Bottom Logged Interval	3349		
Top Logged Interval	2600		
Type Fluid In Hole	Chemical		
Salinity, PPM CL	3000		
Density	9.4		
Level	Full		
Max. Rec. Temp. F	110		
Operating Rig Time	3 1/2 Hours		
Equipment -- Location	15 Hays		
Recorded By	J. Henrickson		
Witnessed By	Kurt Talbott		

Borehole Record				Casing Record			
Run No.	Bit	From	To	Size	Wgt.	From	To
1	12.25	00	388	8.625	24#	00	388
2	7.875	388	3370				

<<< Fold Here >>>

All interpretations are opinions based on inferences from electrical or other measurements and we cannot and do not guarantee the accuracy or correctness of any interpretation, and we shall not, except in the case of gross or willful negligence on our part, be liable or responsible for any loss, costs, damages, or expenses incurred or sustained by anyone resulting from any interpretation made by any of our officers, agents or employees. These interpretations are also subject to our general terms and conditions set out in our current Price Schedule.

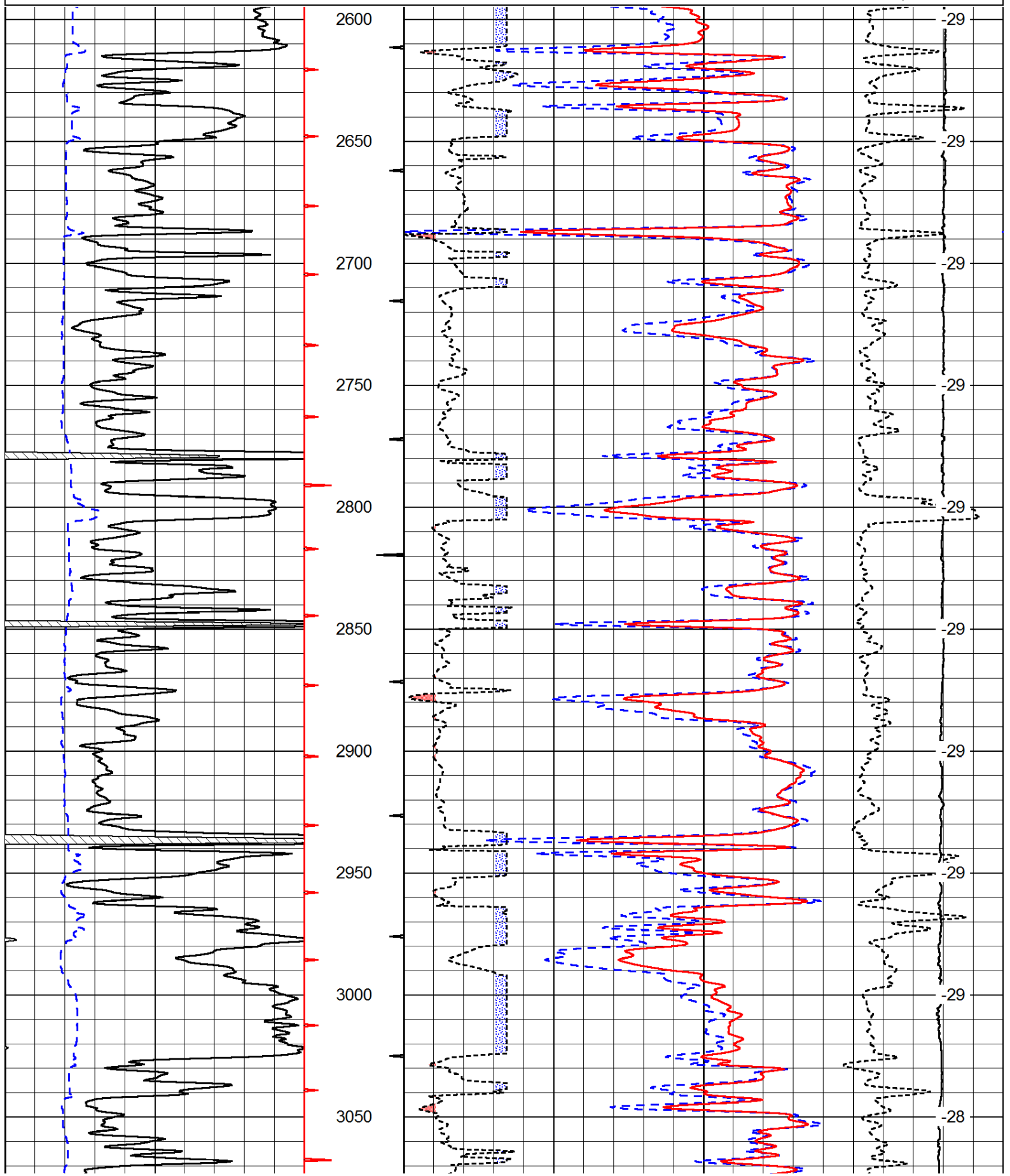
Comments

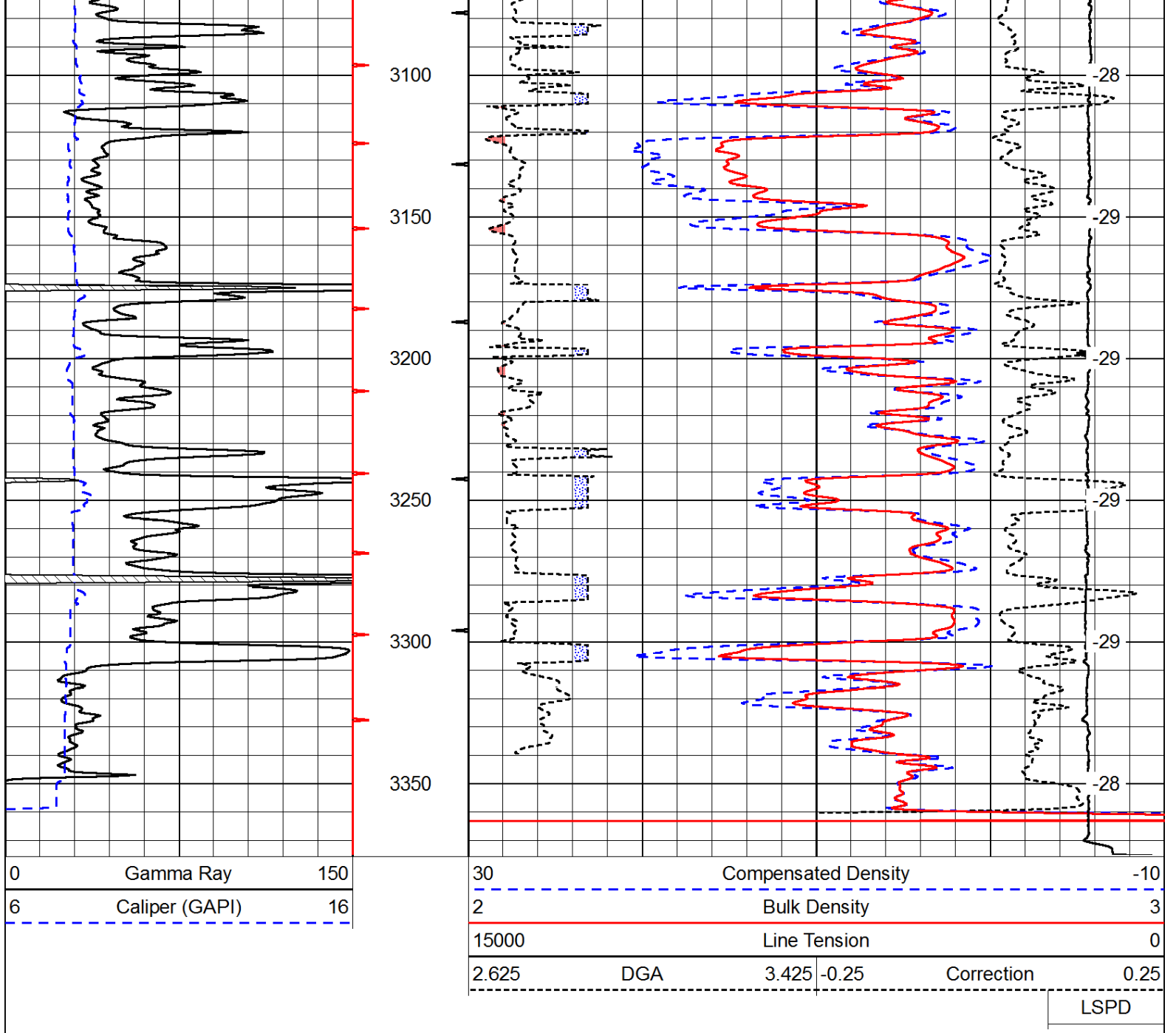
Thank you for using Pioneer Energy Services  
[www.pioneerenergy.com](http://www.pioneerenergy.com)  
 785 625 3858  
  
 Beaver Kansas  
 3 East, 2 1/2 North, East Into

Database File: c:\warrior\data\webco oil\_weber 'a' #13\webco\_weber\_a\_13hd.db  
 Dataset Pathname: DIL/webstk  
 Presentation Format: cdl  
 Dataset Creation: Mon Feb 18 18:59:51 2013  
 Charted by: Depth in Feet scaled 1:600

0	Gamma Ray	150
6	Caliper (GAPI)	16

30	Compensated Density		-10
2	Bulk Density		3
15000	Line Tension		0
2.625	DGA	3.425	-0.25
Correction			0.25
LSPD			





Database File: c:\warrior\data\webco oil\_weber 'a' #13\webco\_weber\_a\_13hd.db  
 Dataset Pathname: DIL/webstk  
 Presentation Format: cndlspec  
 Dataset Creation: Mon Feb 18 18:59:51 2013  
 Charted by: Depth in Feet scaled 1:240

