



Pioneer Energy Services

Dual Induction Log

15-009-25,811-00-00

API No.

Company **Webco Oil Company, Inc.**

Well **Weber 'A' #13**

Field **Kraft-Prusa**

County **Barton** State **Kansas**

Location **S2-SE-SE-SW
2445' FNL & 2310' FWL**

Sec: **12** Twp: **16S** Rge: **12W**

Other Services
CNL/CDL
MEL

Elevation

Permanent Datum **Ground Level** Elevation **1889**
 Log Measured From **Kelly Bushing** **7** Ft. Above Perm. Datum
 Drilling Measured From **Kelly Bushing**

K.B. 1896
D.F. 1889
G.L. 1889

Date	2/18/2013	
Run Number	One	
Depth Driller	3370	
Depth Logger	3370	
Bottom Logged Interval	3369	
Top Log Interval	350	
Casing Driller	8.625 @ 388	
Casing Logger	384	
Bit Size	7.875	
Type Fluid in Hole	Chemical	
Salinity, ppm CL	3000	
Density / Viscosity	9.4 49	
pH / Fluid Loss	8.5 8.8	
Source of Sample	Flowline	
Rm @ Meas. Temp	2.0 @ 50	
Rmf @ Meas. Temp	1.5 @ 50	
Rmc @ Meas. Temp	2.7 @ 50	
Source of Rmf / Rmc	Charts	
Rm @ BHT	.91 @ 110	
Operating Rig Time	3 1/2 Hours	
Max Rec. Temp. F	110	
Equipment Number	15	
Location	Hays	
Recorded By	J. Hennickson	D. Martin
Witnessed By	Kurt Talbott	

<<< Fold Here >>>

All interpretations are opinions based on inferences from electrical or other measurements and we cannot and do not guarantee the accuracy or correctness of any interpretation, and we shall not, except in the case of gross or willful negligence on our part, be liable or responsible for any loss, costs, damages, or expenses incurred or sustained by anyone resulting from any interpretation made by any of our officers, agents or employees. These interpretations are also subject to our general terms and conditions set out in our current Price Schedule.

Comments

Thank you for using Pioneer Energy Services
www.pioneerenergy.com
 785 625 3858

Beaver Kansas
 3 East, 2 1/2 North, East Into

Database File: c:\warrior\data\webco oil_weber 'a' #13\webco_weber_a_13hd.db
 Dataset Pathname: DIL/webstk
 Presentation Format: dil2in
 Dataset Creation: Mon Feb 18 18:59:51 2013
 Charted by: Depth in Feet scaled 1:600

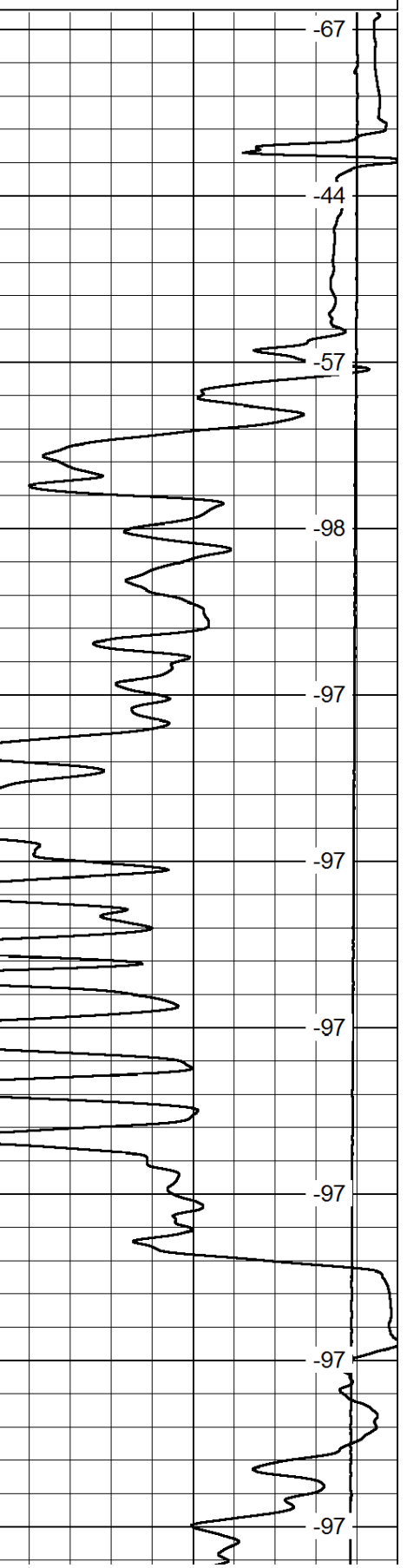
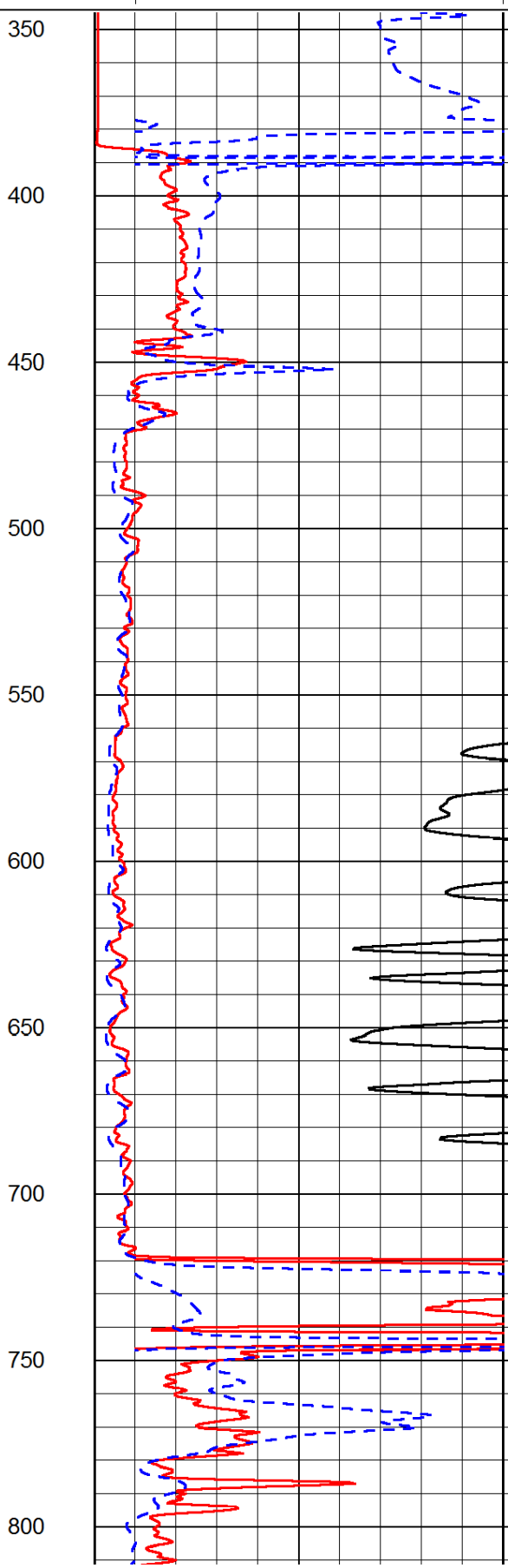
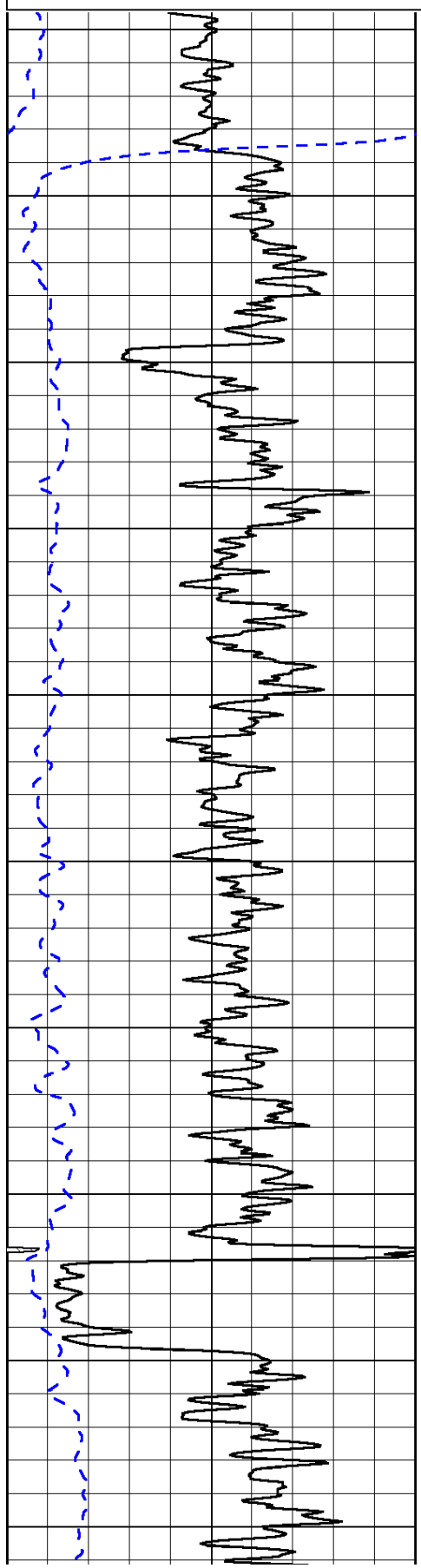
0	Gamma Ray	150
-200	SP (mV)	0

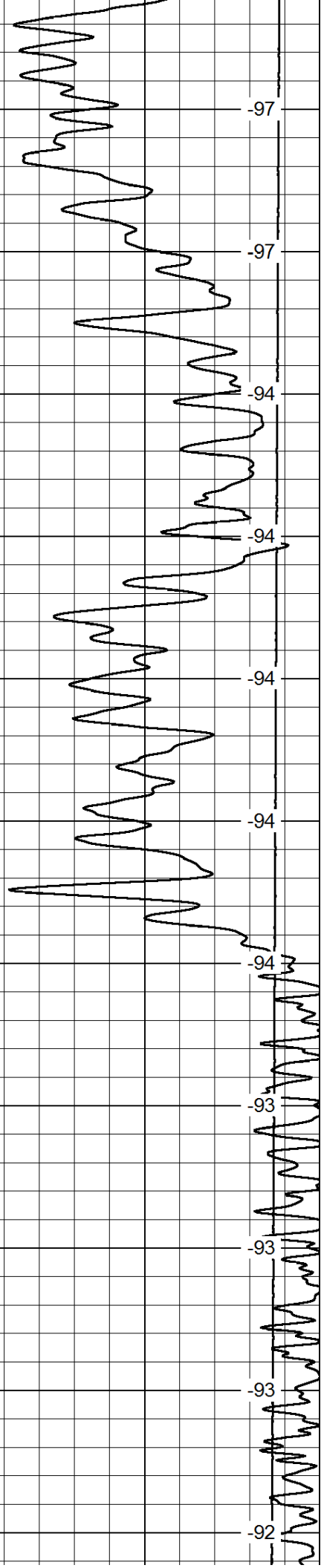
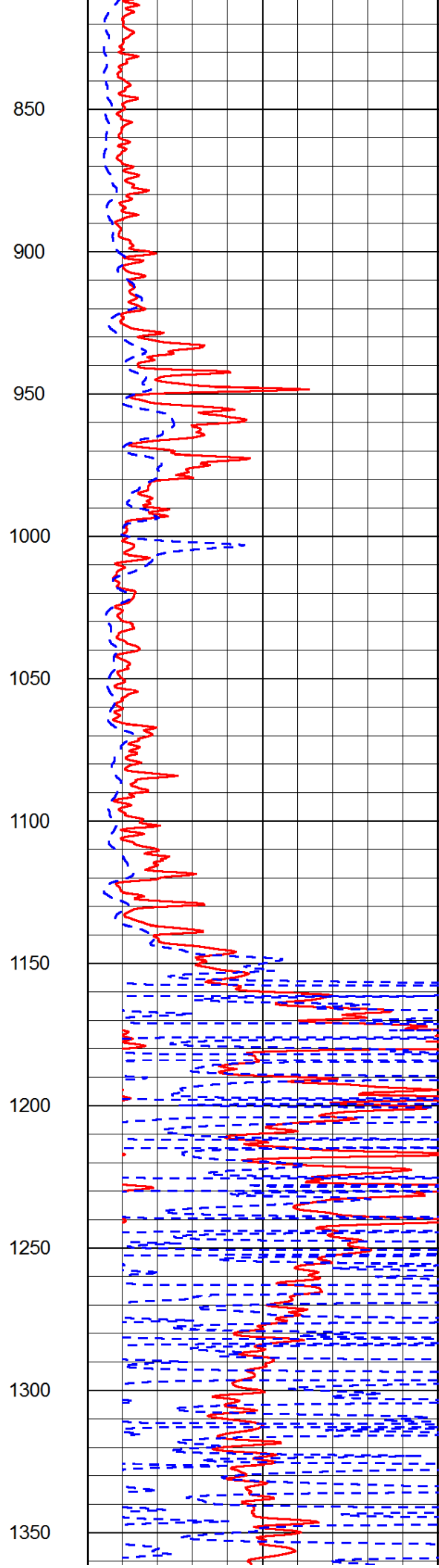
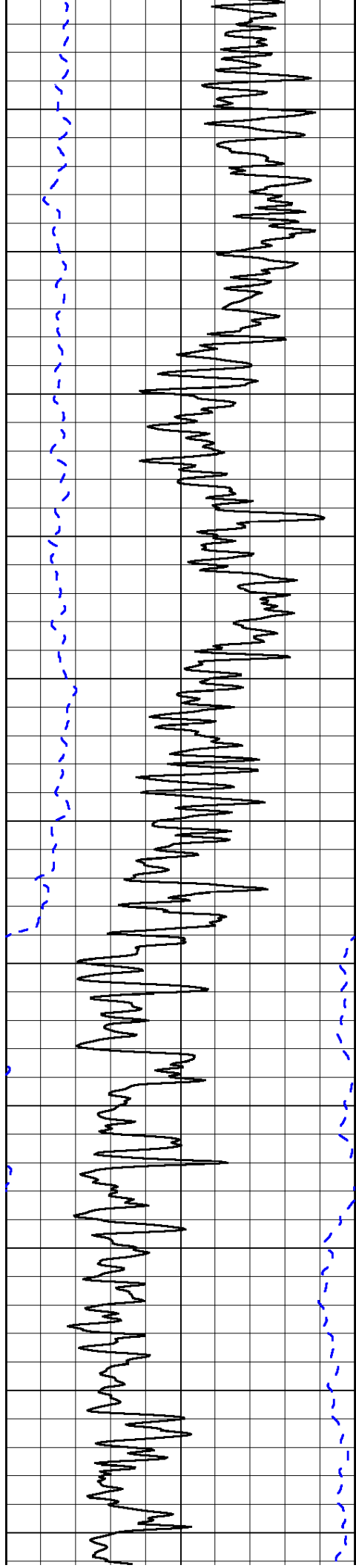
0	Shallow Resistivity	50
0	Deep Resistivity	50

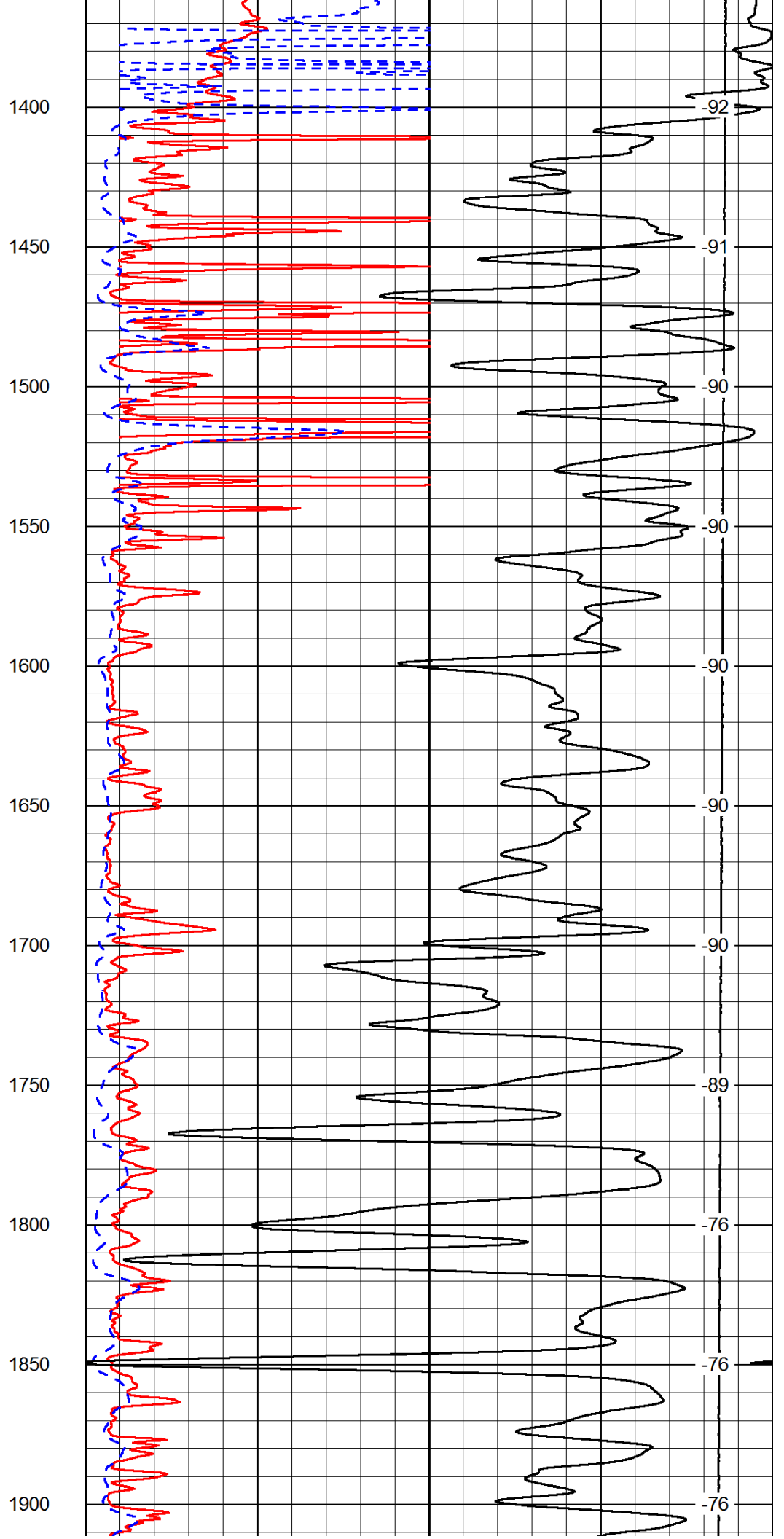
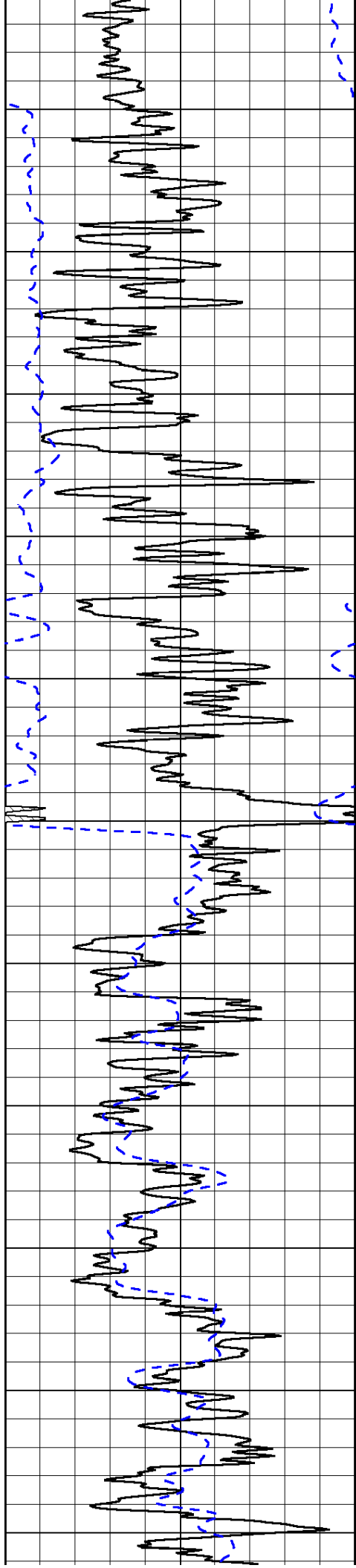
LSPD

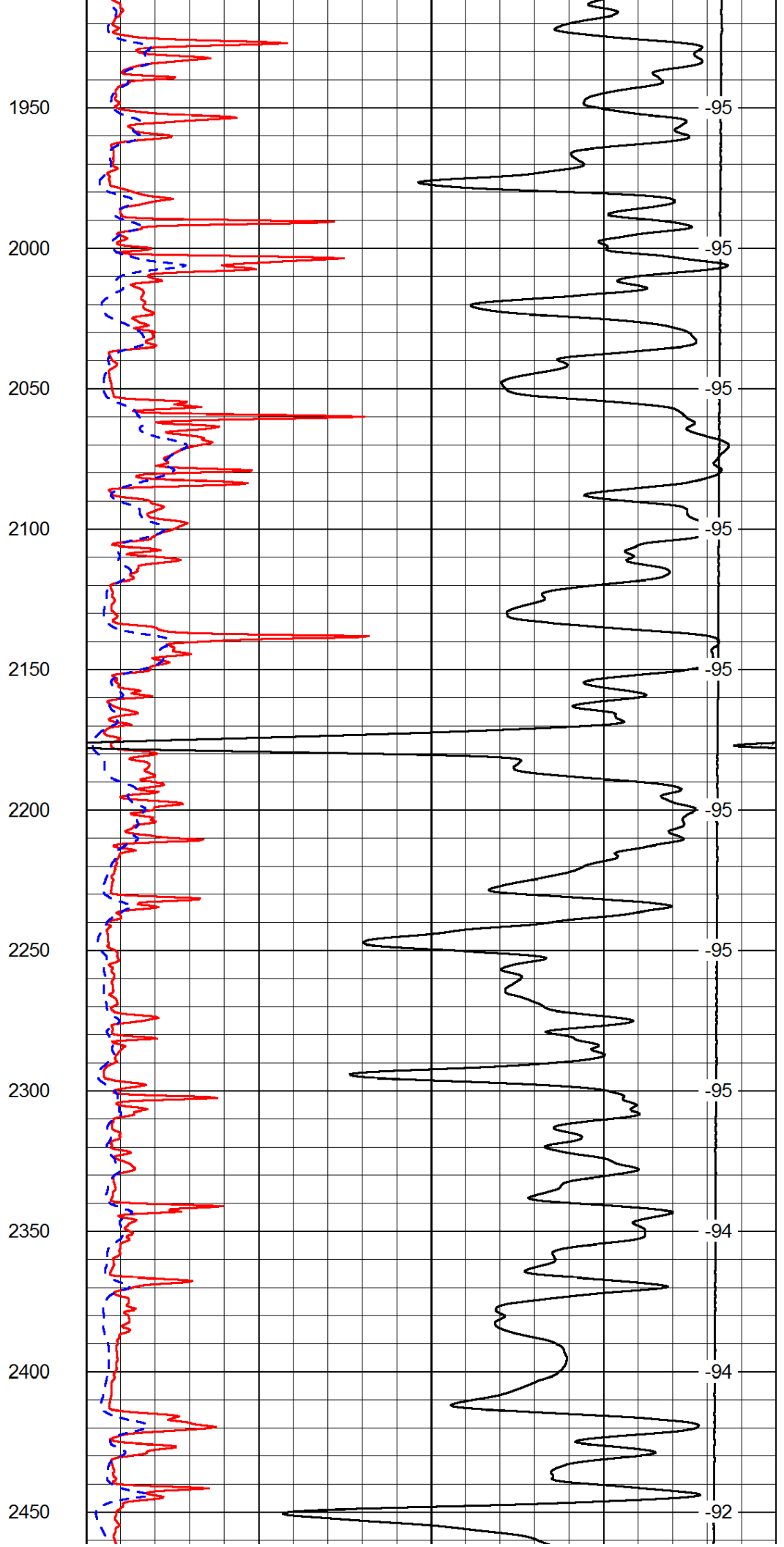
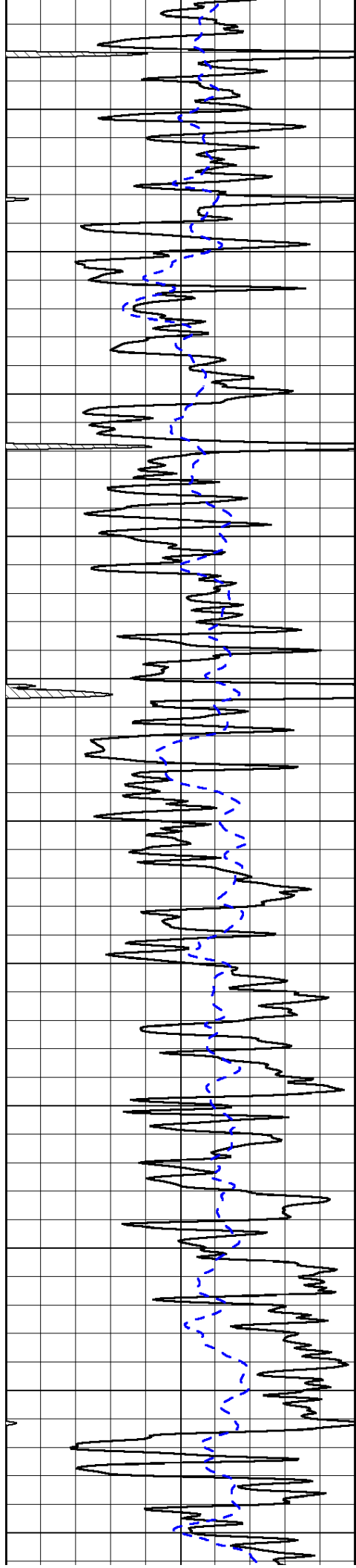
1000	Conductivity	0
15000	Line Tension	0

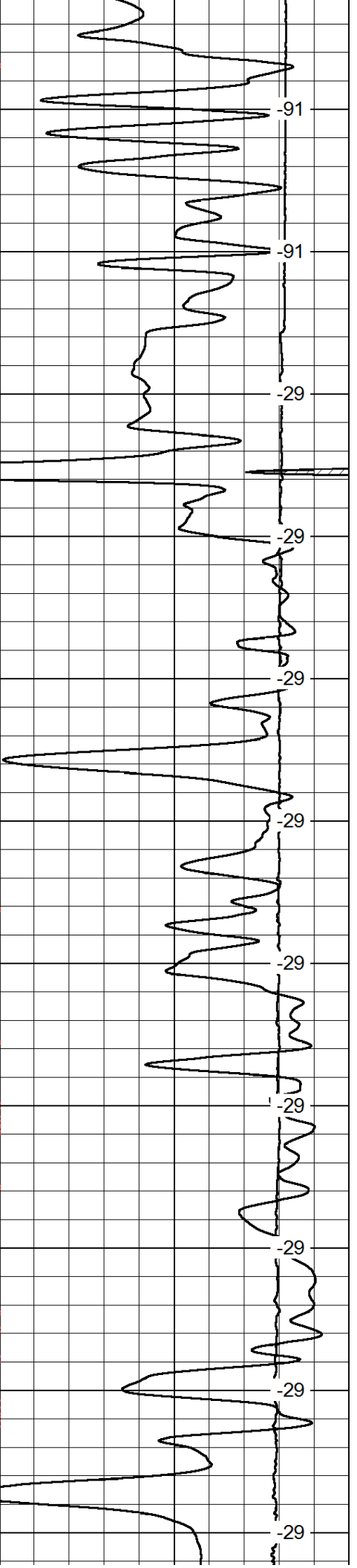
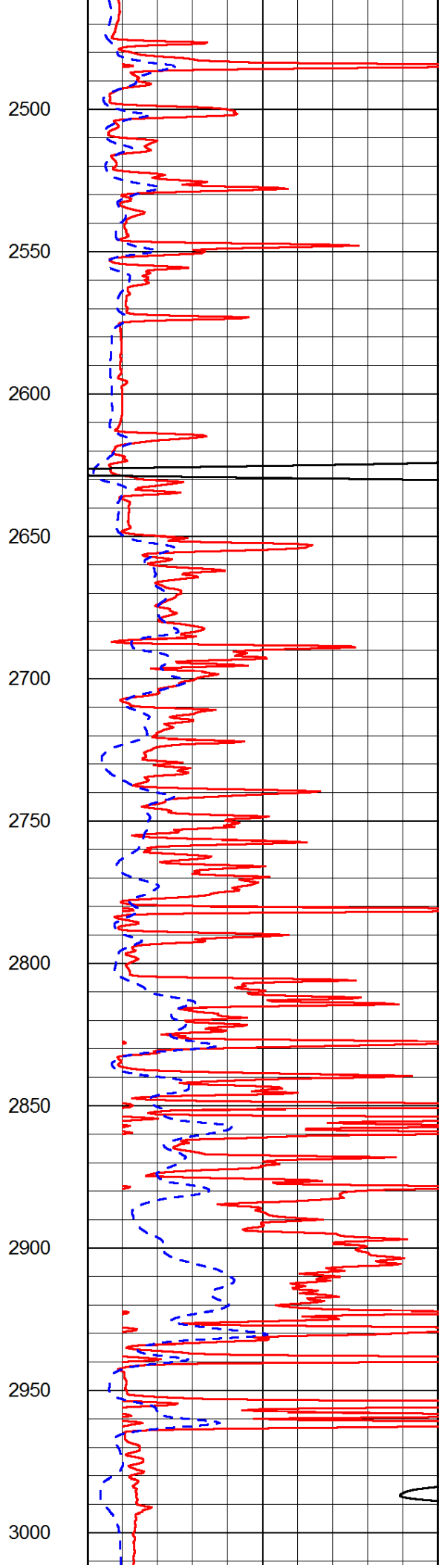
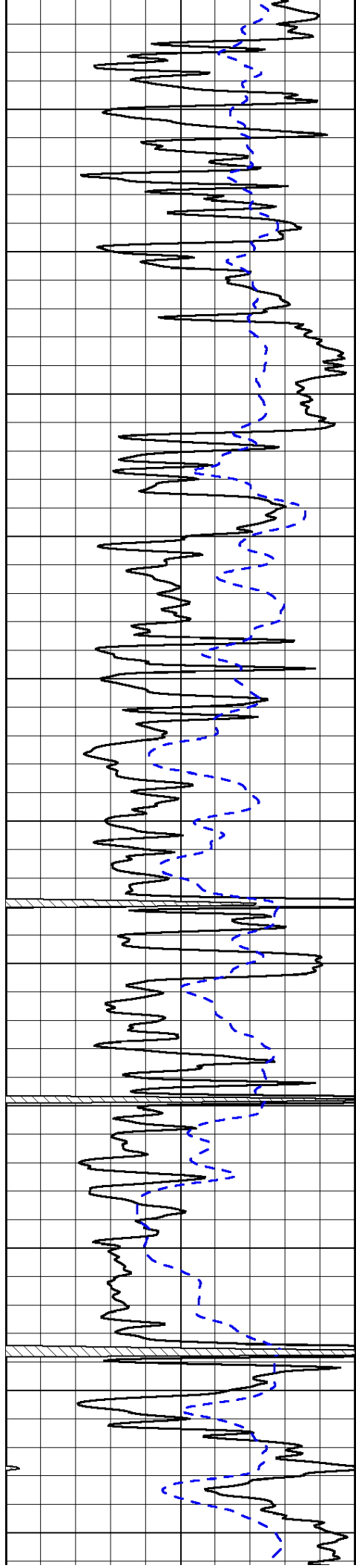
50	Shallow Resistivity	500
50	Deep Resistivity	500

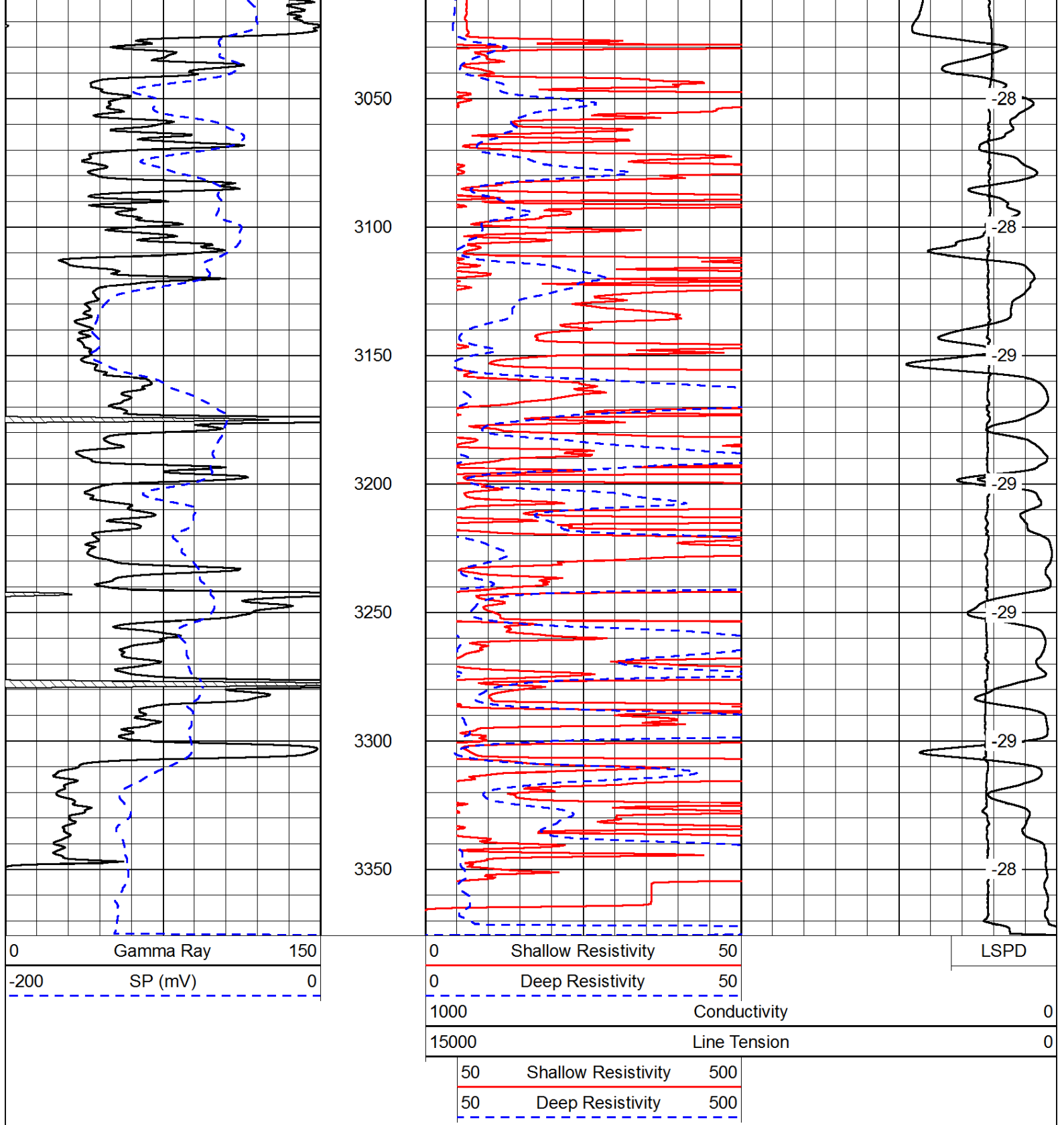




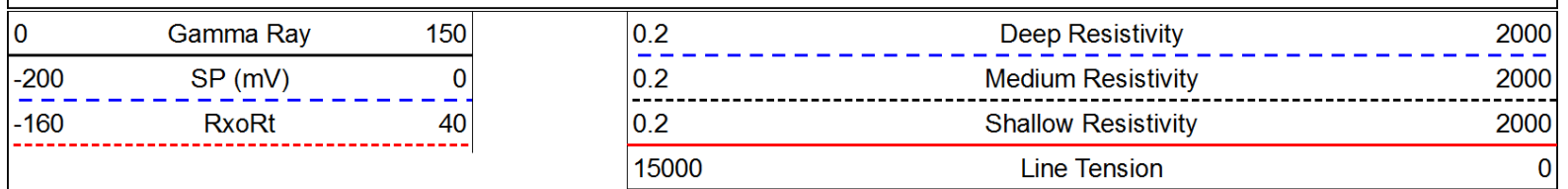


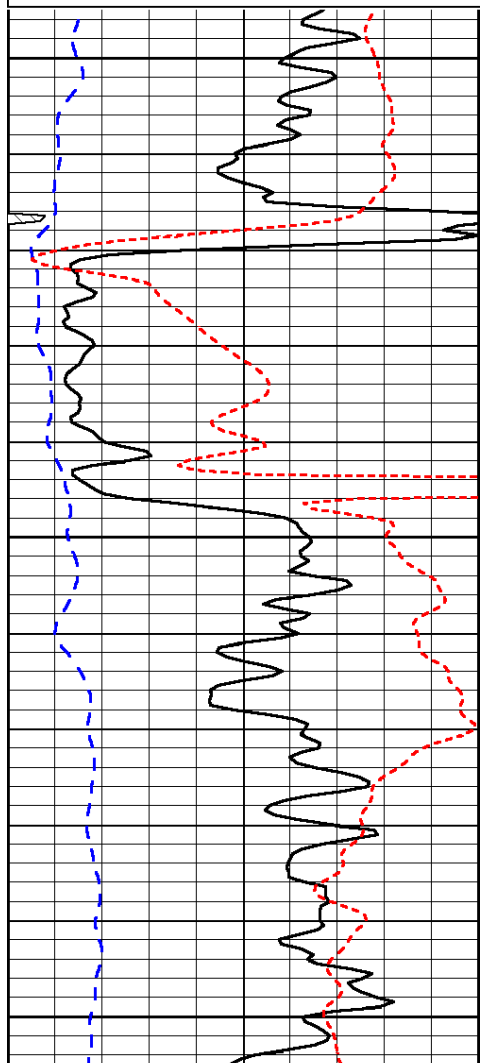






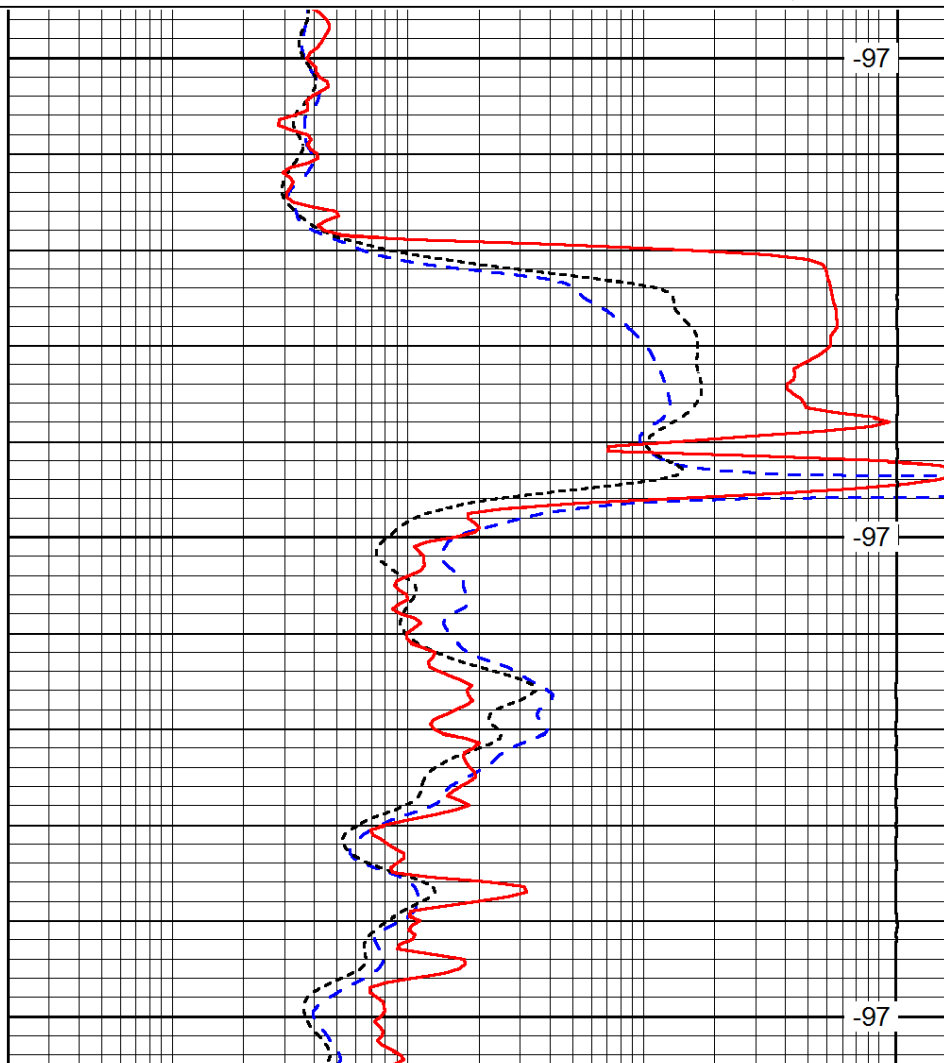
Database File: c:\warrior\data\webco oil_weber 'a' #13\webco_weber_a_13hd.db
 Dataset Pathname: DIL/webstk
 Presentation Format: dil
 Dataset Creation: Mon Feb 18 18:59:51 2013
 Charted by: Depth in Feet scaled 1:240





700
750
800

0	Gamma Ray	150
-200	SP (mV)	0
-160	RxoRt	40



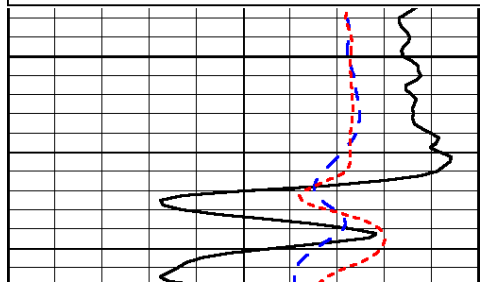
-97
-97
-97

0.2	Deep Resistivity	2000
0.2	Medium Resistivity	2000
0.2	Shallow Resistivity	2000
15000	Line Tension	0

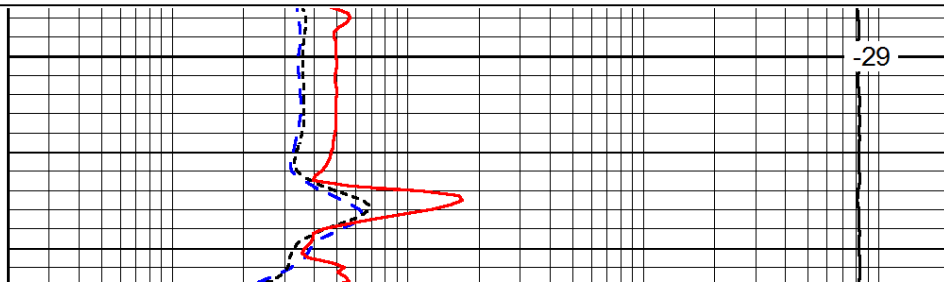
Database File: c:\warrior\data\webco oil_weber 'a' #13\webco_weber_a_13hd.db
 Dataset Pathname: DIL/webstk
 Presentation Format: dil
 Dataset Creation: Mon Feb 18 18:59:51 2013
 Charted by: Depth in Feet scaled 1:240

0	Gamma Ray	150
-200	SP (mV)	0
-160	RxoRt	40

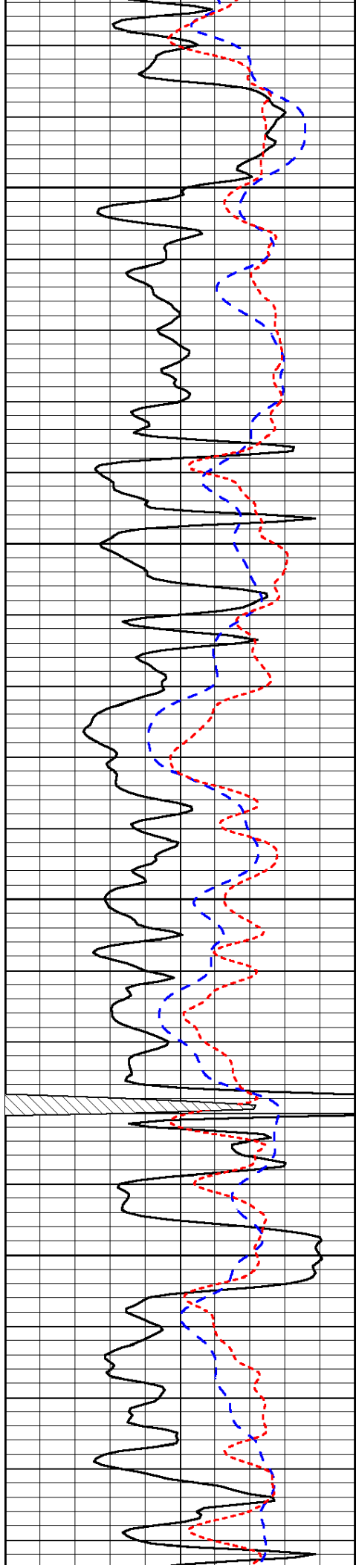
0.2	Deep Resistivity	2000
0.2	Medium Resistivity	2000
0.2	Shallow Resistivity	2000
15000	Line Tension	0



2600



-29

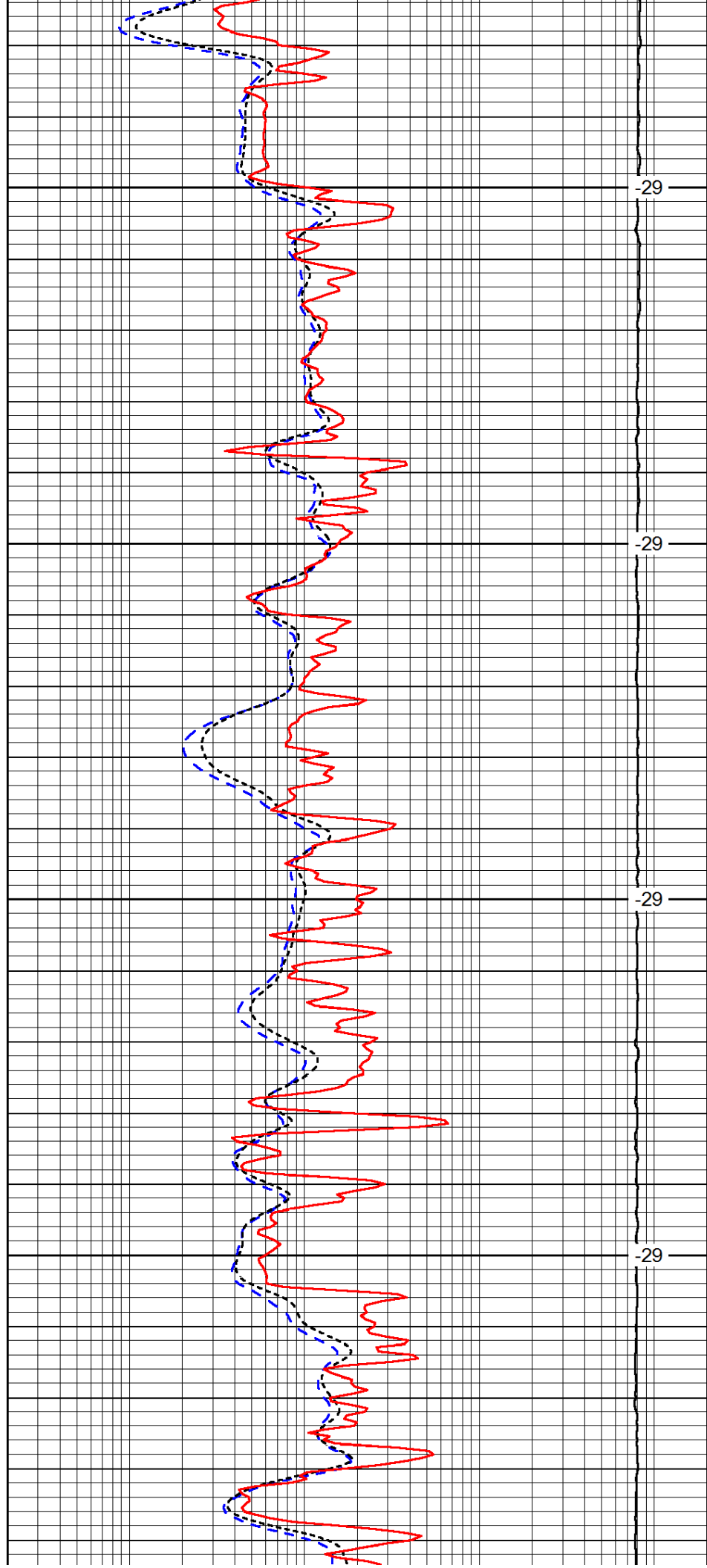


2650

2700

2750

2800

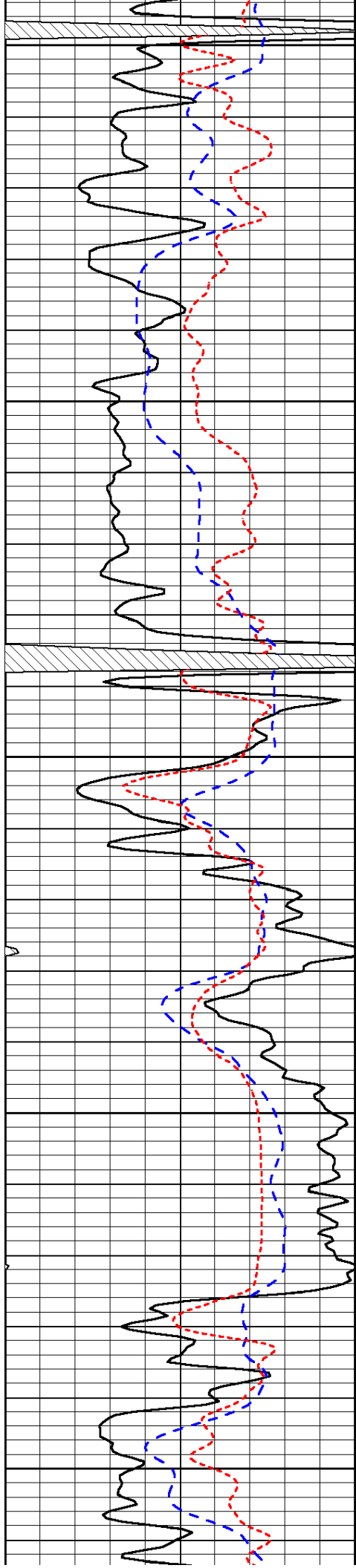


-29

-29

-29

-29



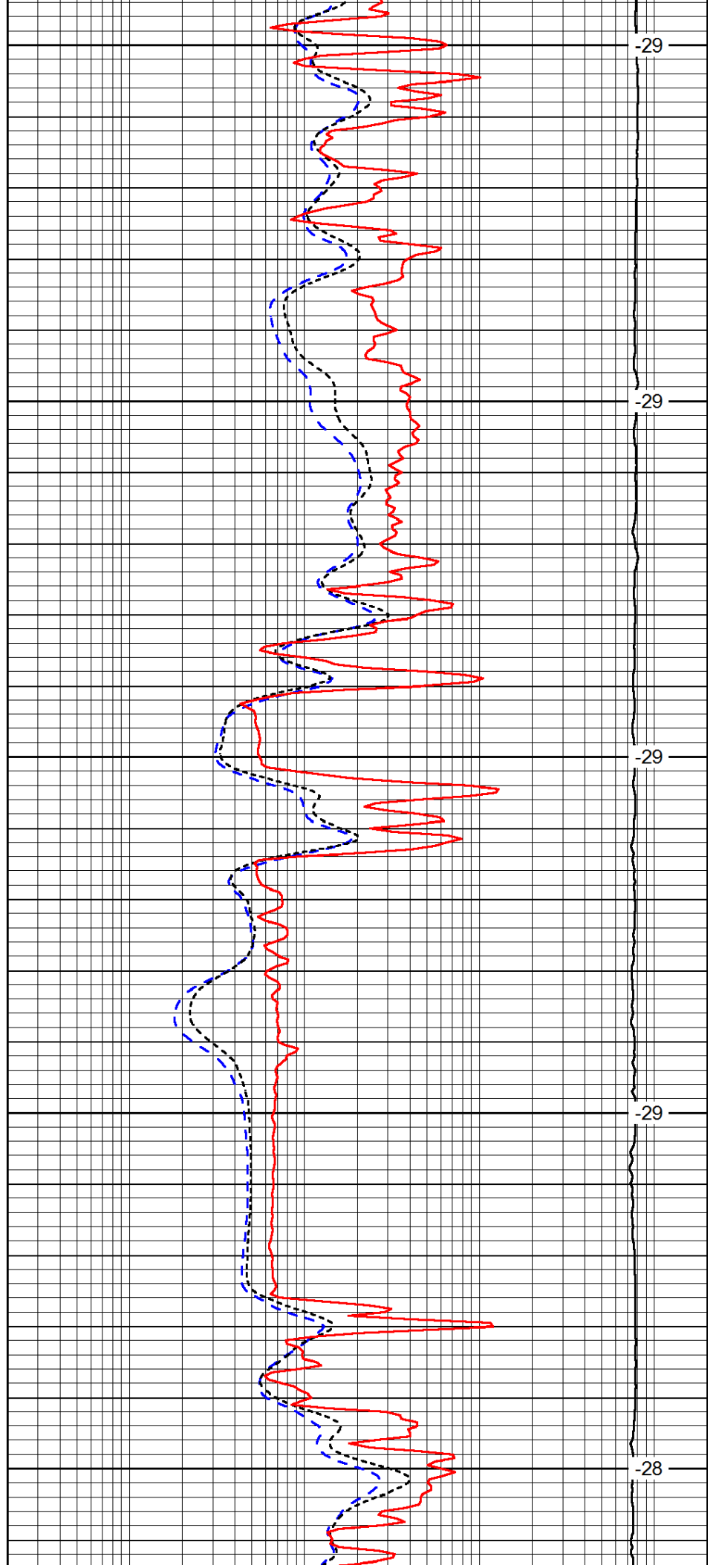
2850

2900

2950

3000

3050



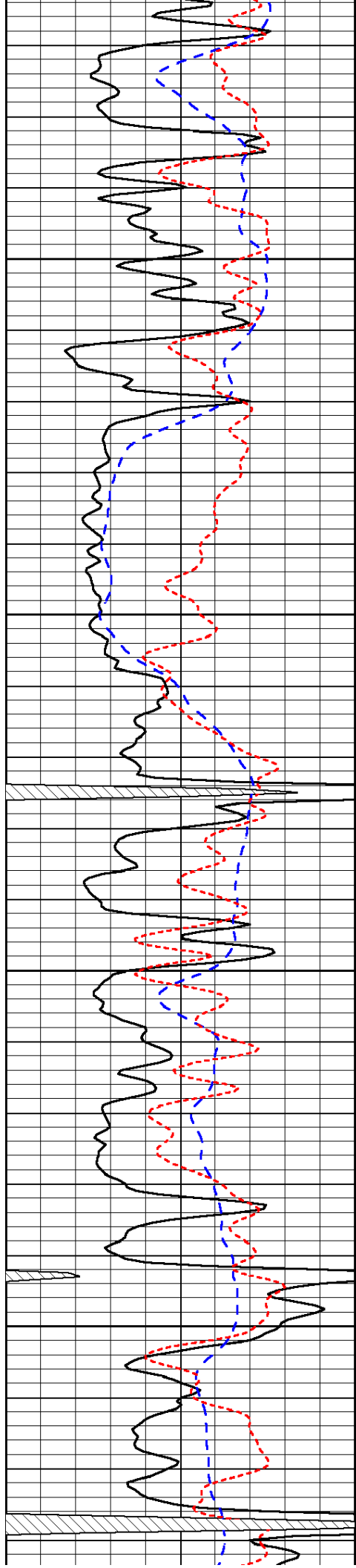
-29

-29

-29

-29

-28

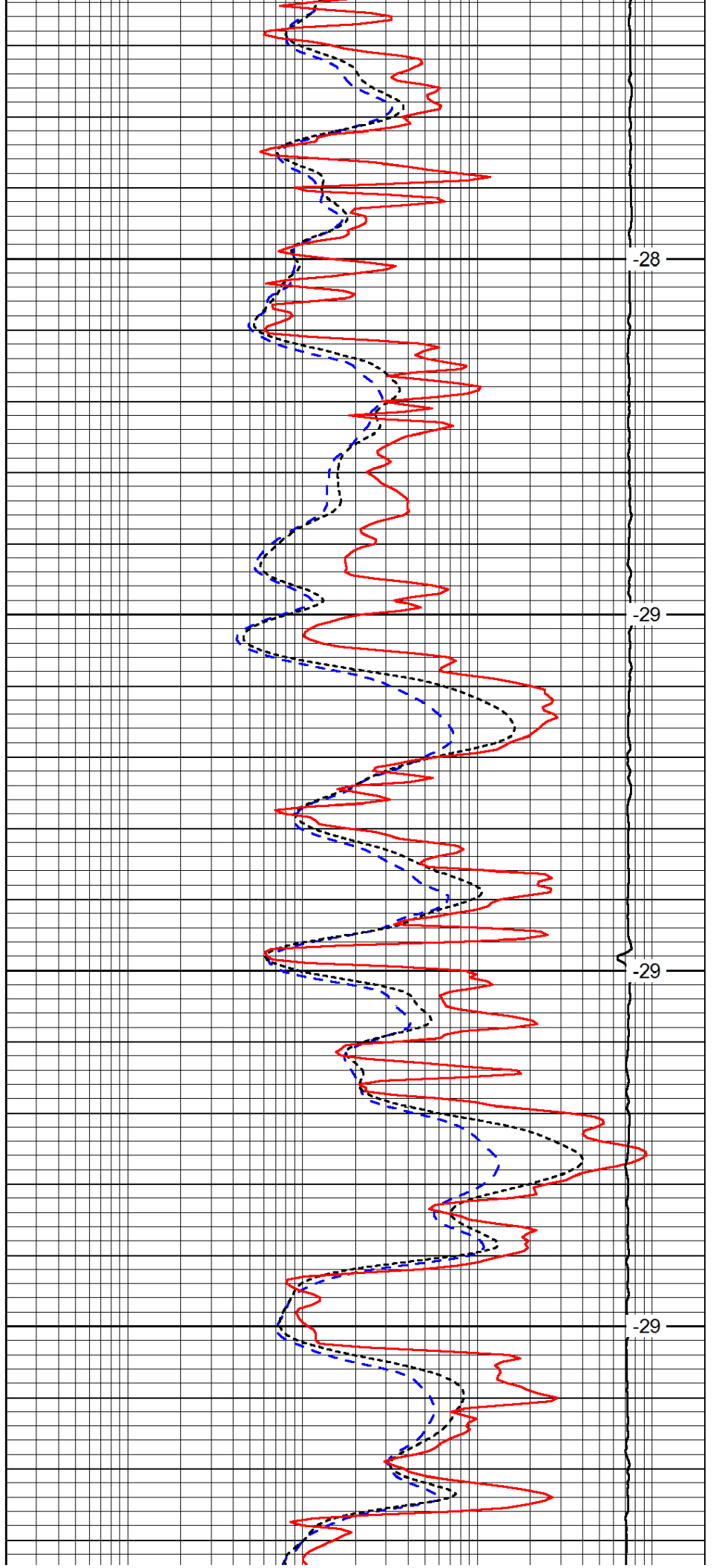


3100

3150

3200

3250

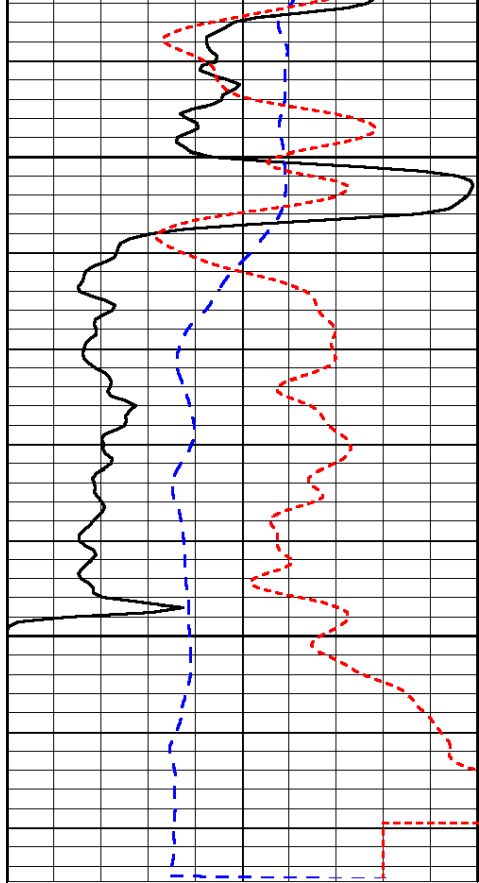


-28

-29

-29

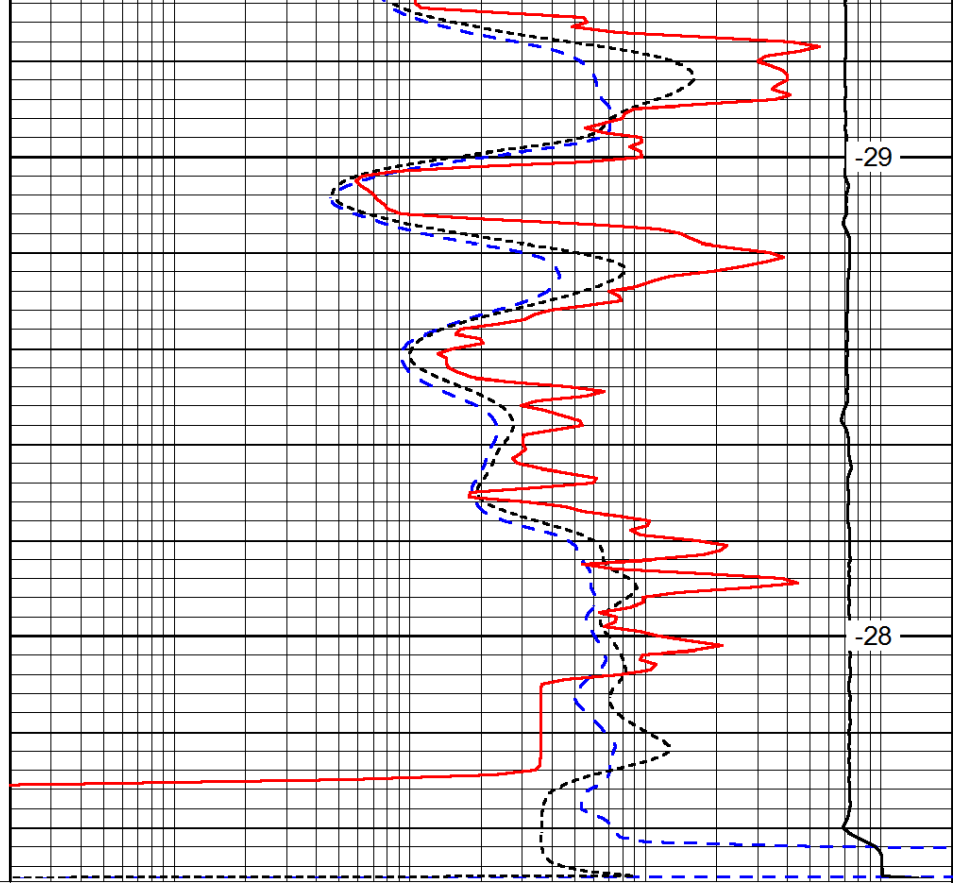
-29



0	Gamma Ray	150
-200	SP (mV)	0
-160	RxoRt	40

3300

3350



0.2	Deep Resistivity	2000
0.2	Medium Resistivity	2000
0.2	Shallow Resistivity	2000
15000	Line Tension	0

-29

-28

LSPD