



SUPERIOR
Hays,
Kansas

MICRO
LOG

Company CORAL COAST PETROLEUM, L.C.
Well HARDEN #1
Field MORRISON NORTHEAST
County CLARK
State KANSAS

Company CORAL COAST PETROLEUM, L.C.
Well HARDEN #1
Field MORRISON NORTHEAST
County CLARK State KANSAS

Location: API # : 15-025-21545-0000
1720' FSL & 2290' FEL
SEC 16 TWP 32S RGE 21W
Permanent Datum GROUND LEVEL Elevation 2111
Log Measured From KELLY BUSHING 10' A.G.L.
Drilling Measured From KELLY BUSHING
Other Services
CDL/CNL/PE
DIL/SONIC
Elevation
K.B. 2121
D.F. 2119
G.L. 2111

Date	9/19/12
Run Number	TWO
Depth Driller	6690
Depth Logger	6688
Bottom Logged Interval	6668
Top Log Interval	4200
Casing Driller	8 5/8"@636'
Casing Logger	638
Bit Size	7 7/8"
Type Fluid in Hole	CHEMICAL MUD
Density / Viscosity	9.065
pH / Fluid Loss	11.0/8.8
Source of Sample	FLOWLINE
Rm @ Meas. Temp	.440@88F
Rmt @ Meas. Temp	.330@88F
Rmc @ Meas. Temp	.528@88F
Source of Rmf / Rmc	MEASUREMENT
Rm @ BHT	.277@140F
Time Circulation Stopped	6 HOURS
Time Logger on Bottom	7:45 P.M.
Maximum Recorded Temperature	140F
Equipment Number	4010
Location	HAYS, KANSAS
Recorded By	JEFF LUEBBERS
Witnessed By	KEITH REAVIS

<<< Fold Here >>>

All interpretations are opinions based on inferences from electrical or other measurements and we cannot and do not guarantee the accuracy or correctness of any interpretation, and we shall not, except in the case of gross or willful negligence on our part, be liable or responsible for any loss, costs, damages, or expenses incurred or sustained by anyone resulting from any interpretation made by any of our officers, agents or employees. These interpretations are also subject to our general terms and conditions set out in our current Price Schedule.

Comments

THANK YOU FOR USING SUPERIOR WELL SERVICE HAYS, KANSAS (785) 628-6395
DIRECTIONS
PROTECTION, KS. 6W. ON HWY 160 TO "RD. 30", 4N. TO CATTLE GUARD, 1W. IN PASTURE TO
SECOND CATTLE GUARD, FOLLOW TRAIL I MORE MILE W. & N.

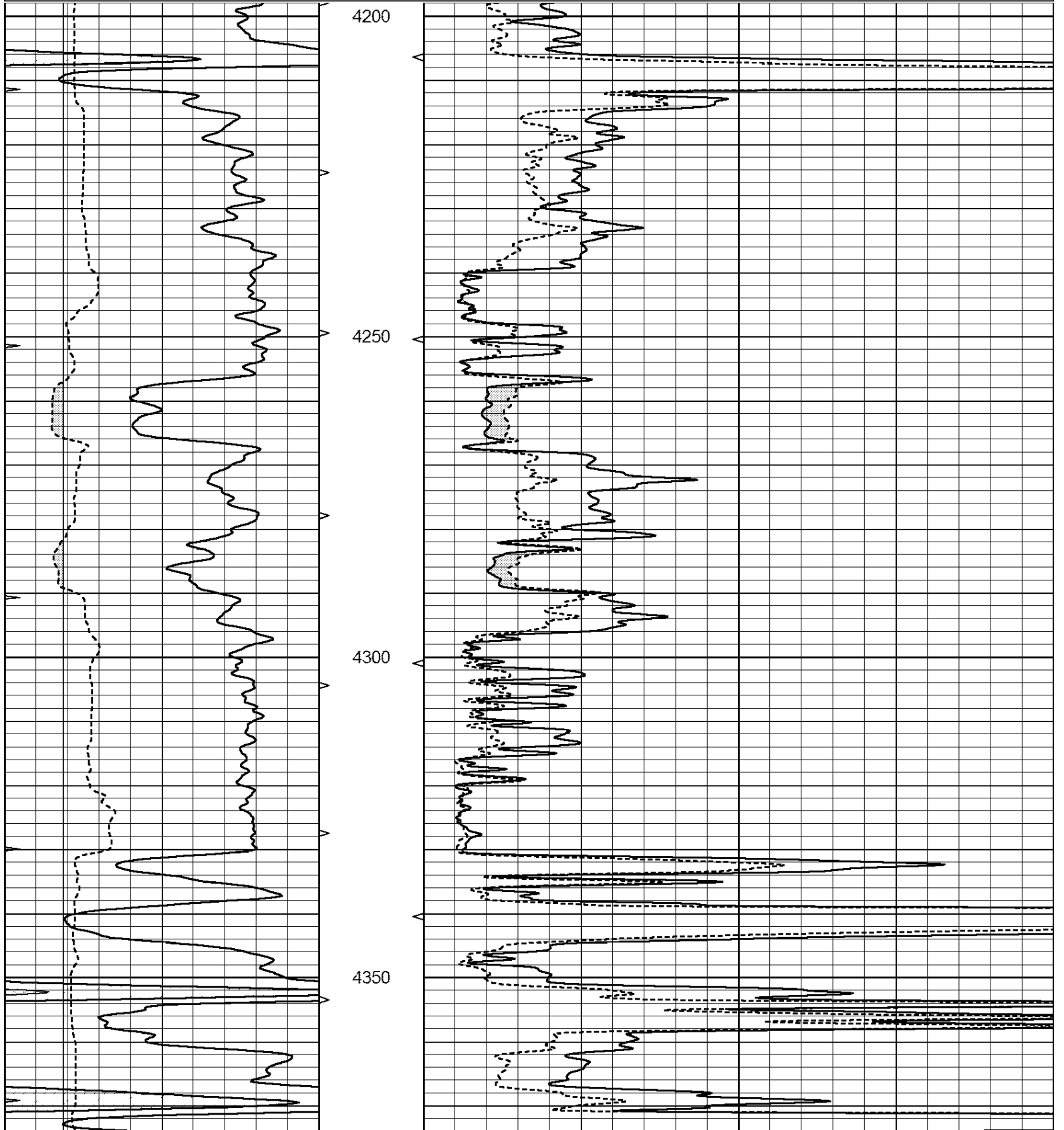


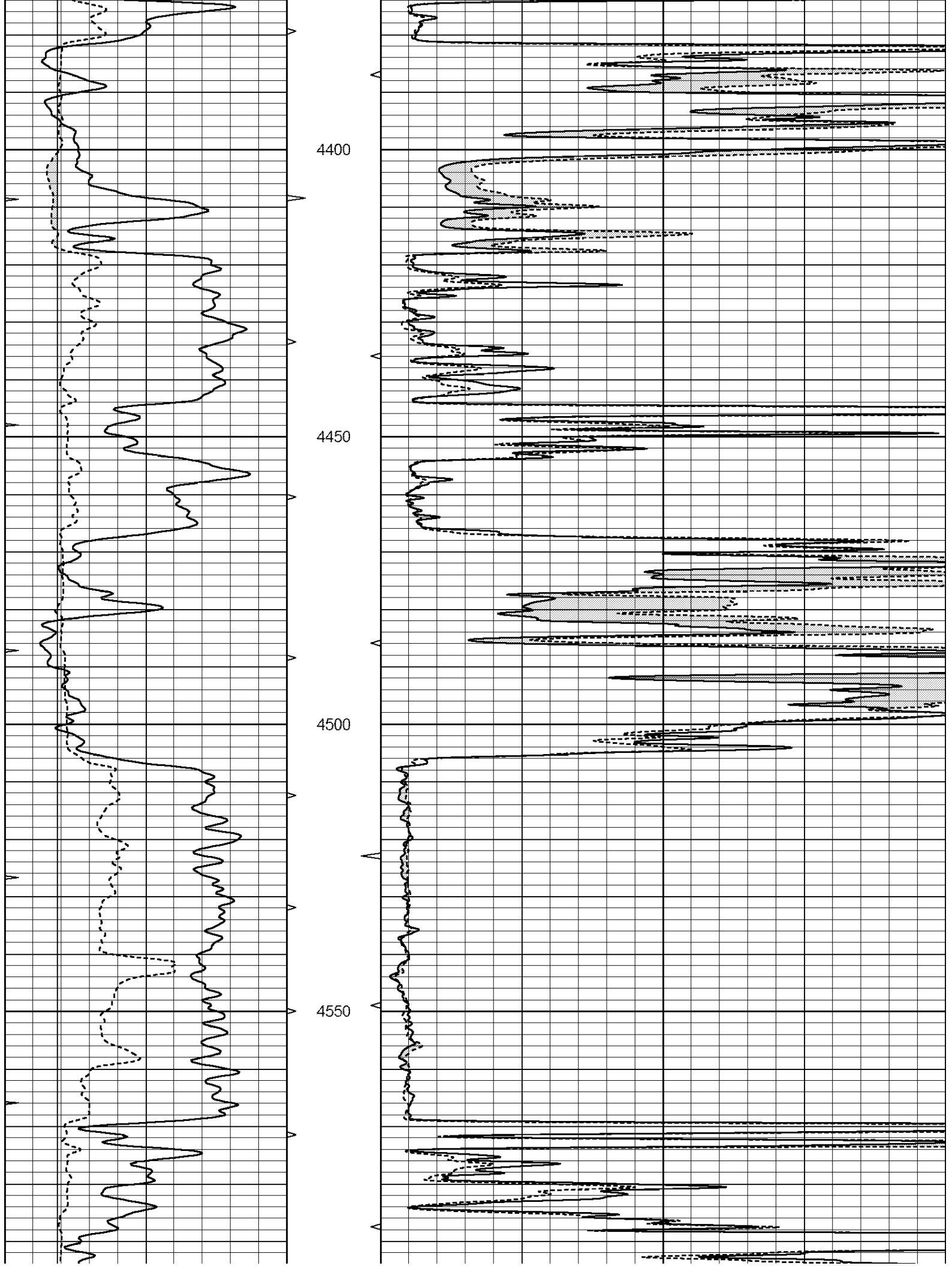
SUPERIOR
Hays,
Kansas

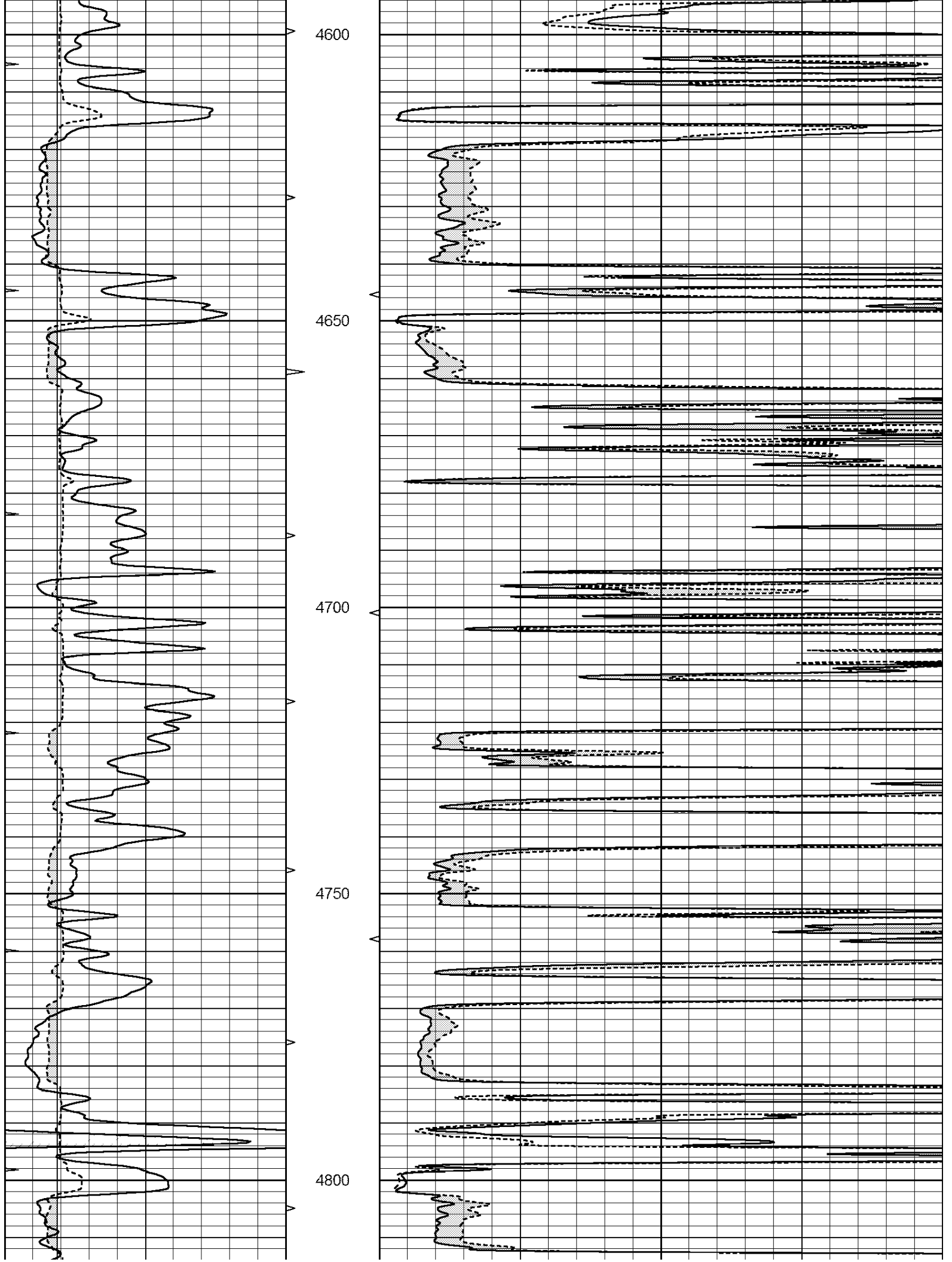
MAIN SECTION

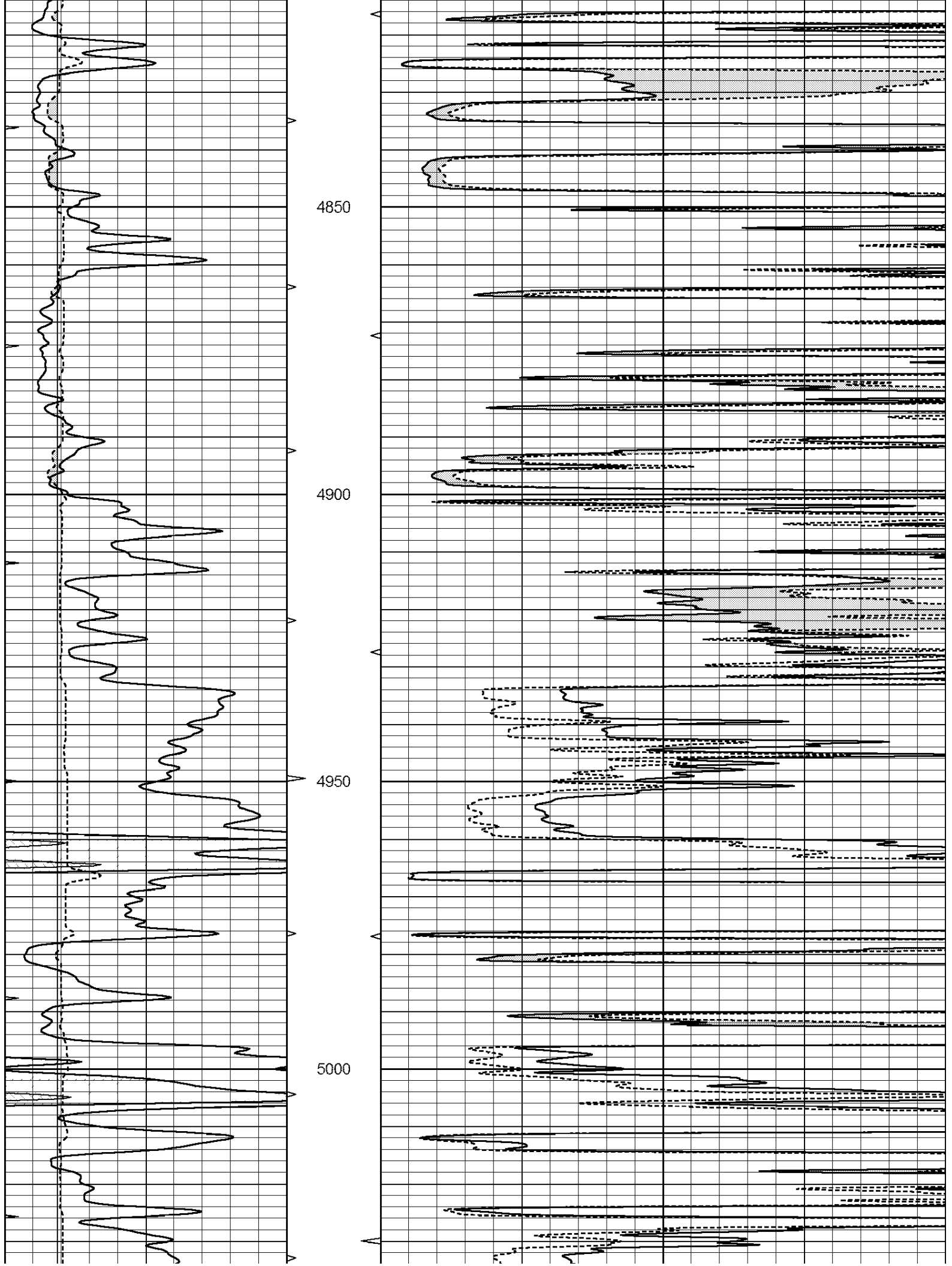
Database File: 409678pe.db
 Dataset Pathname: pass6.2
 Presentation Format: micro
 Dataset Creation: Thu Sep 20 00:21:21 2012
 Charted by: Depth in Feet scaled 1:240

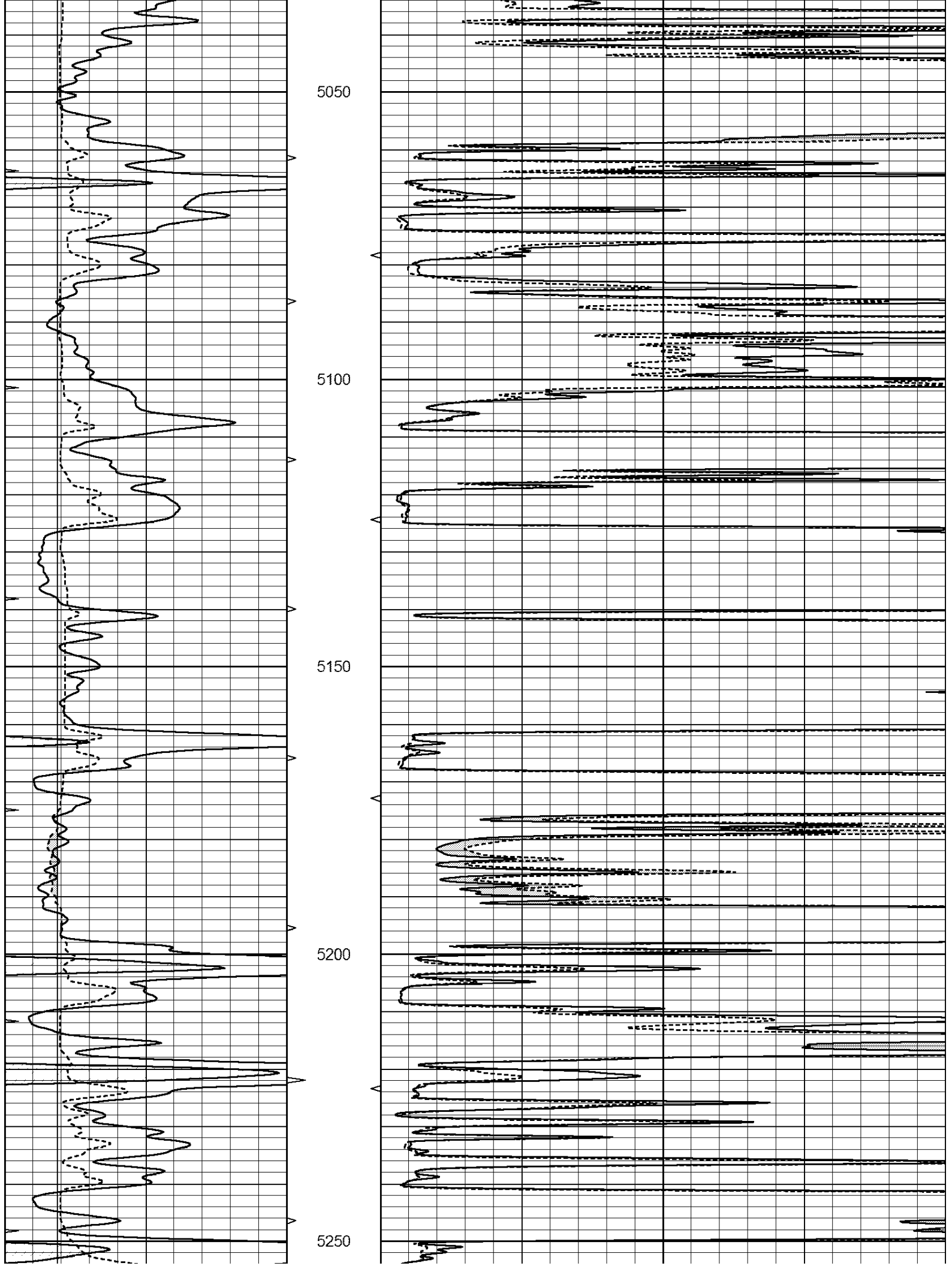
0	GAMMA RAY (GAPI)	150	ABHV	0	MEL1.5 (Ohm-m)	40
6	CALIPER (in)	16	10 (ft3)	0	MEL2.0 (Ohm-m)	40
0	MINMK	20	TBHV			
			0 (ft3)	10		

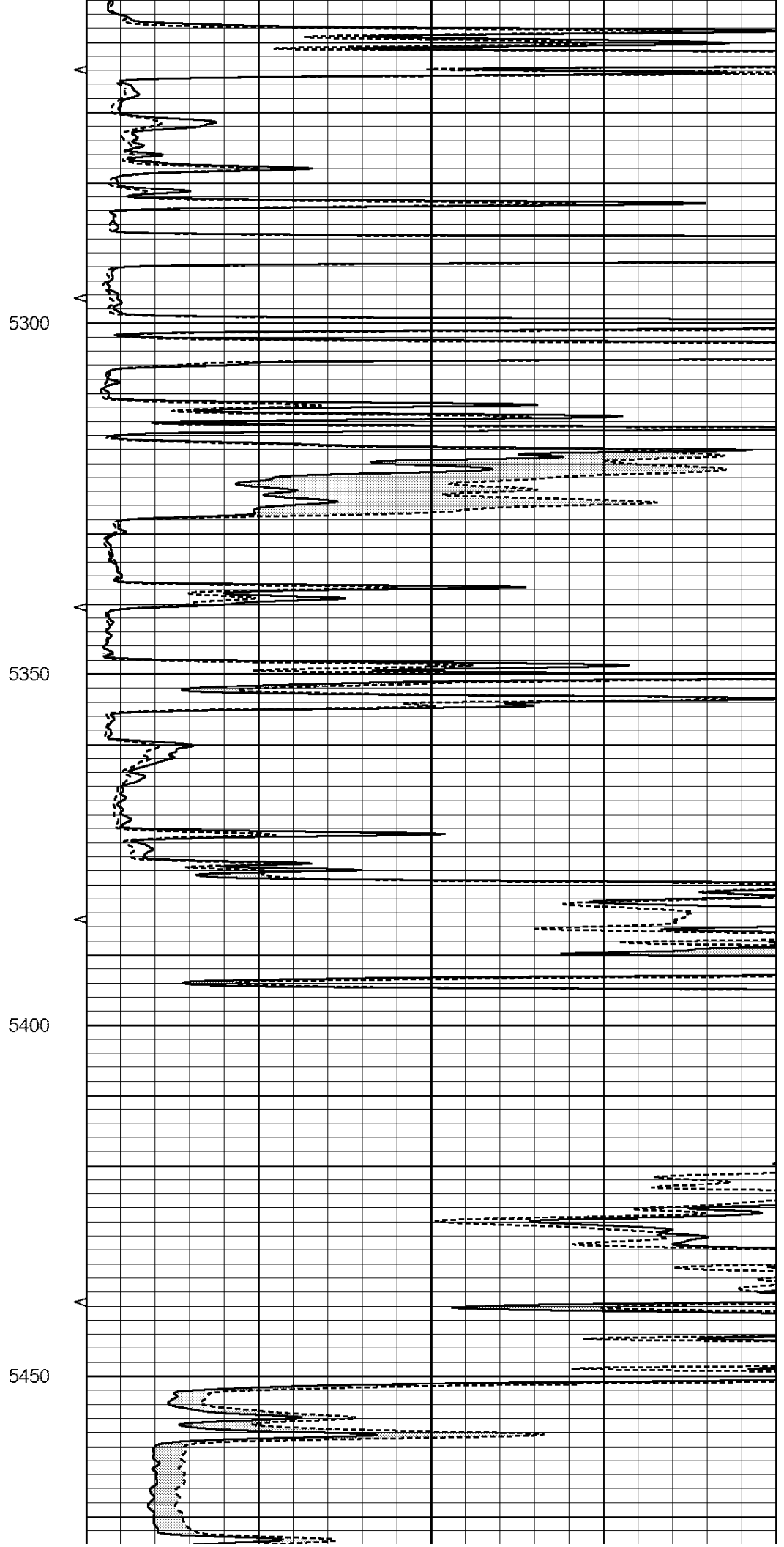
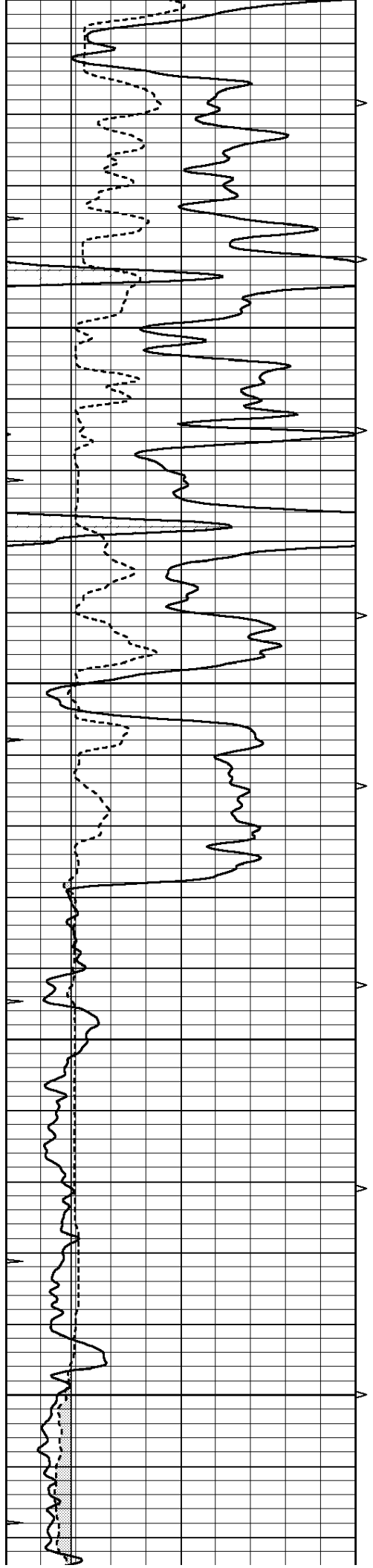


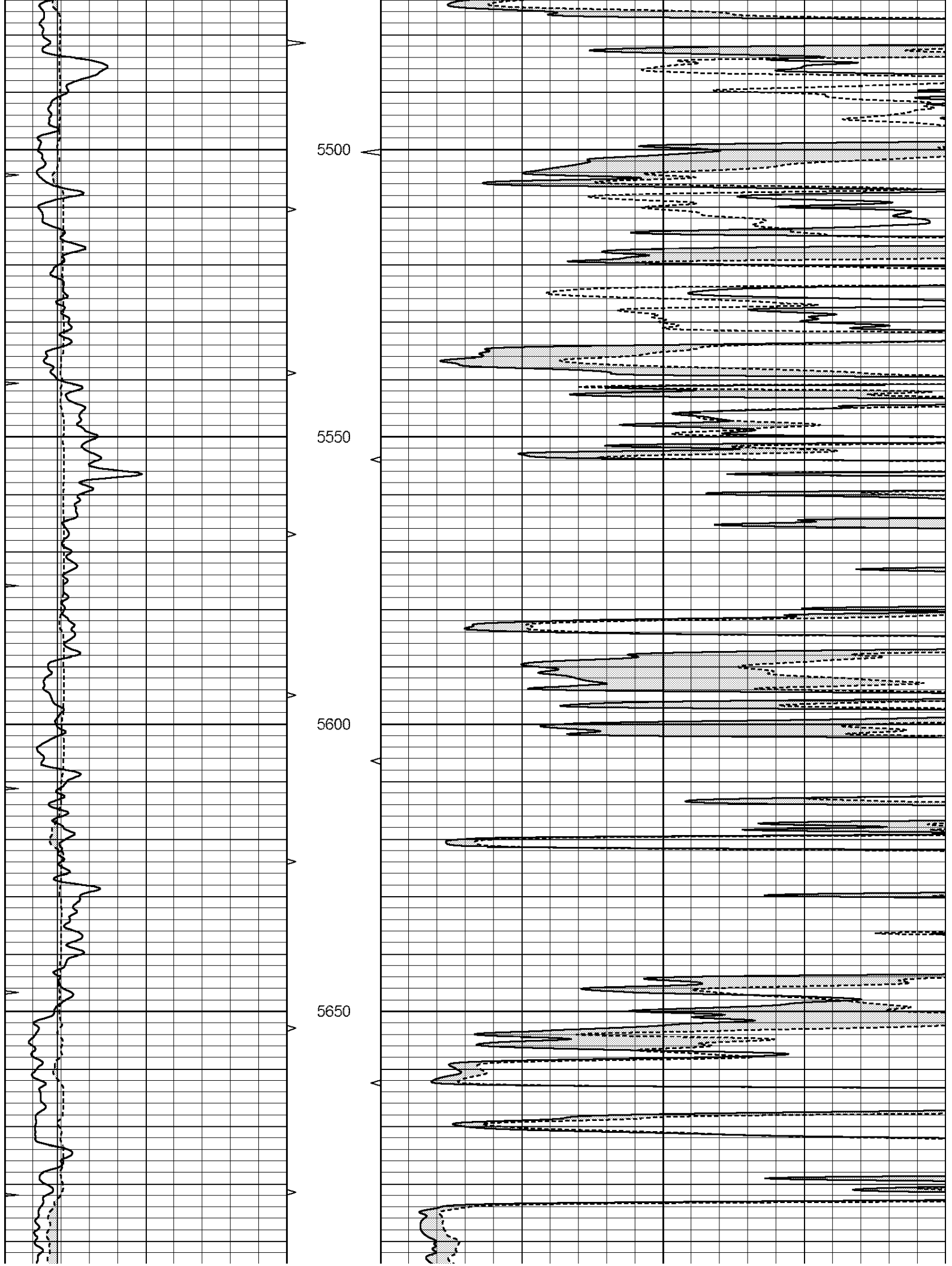


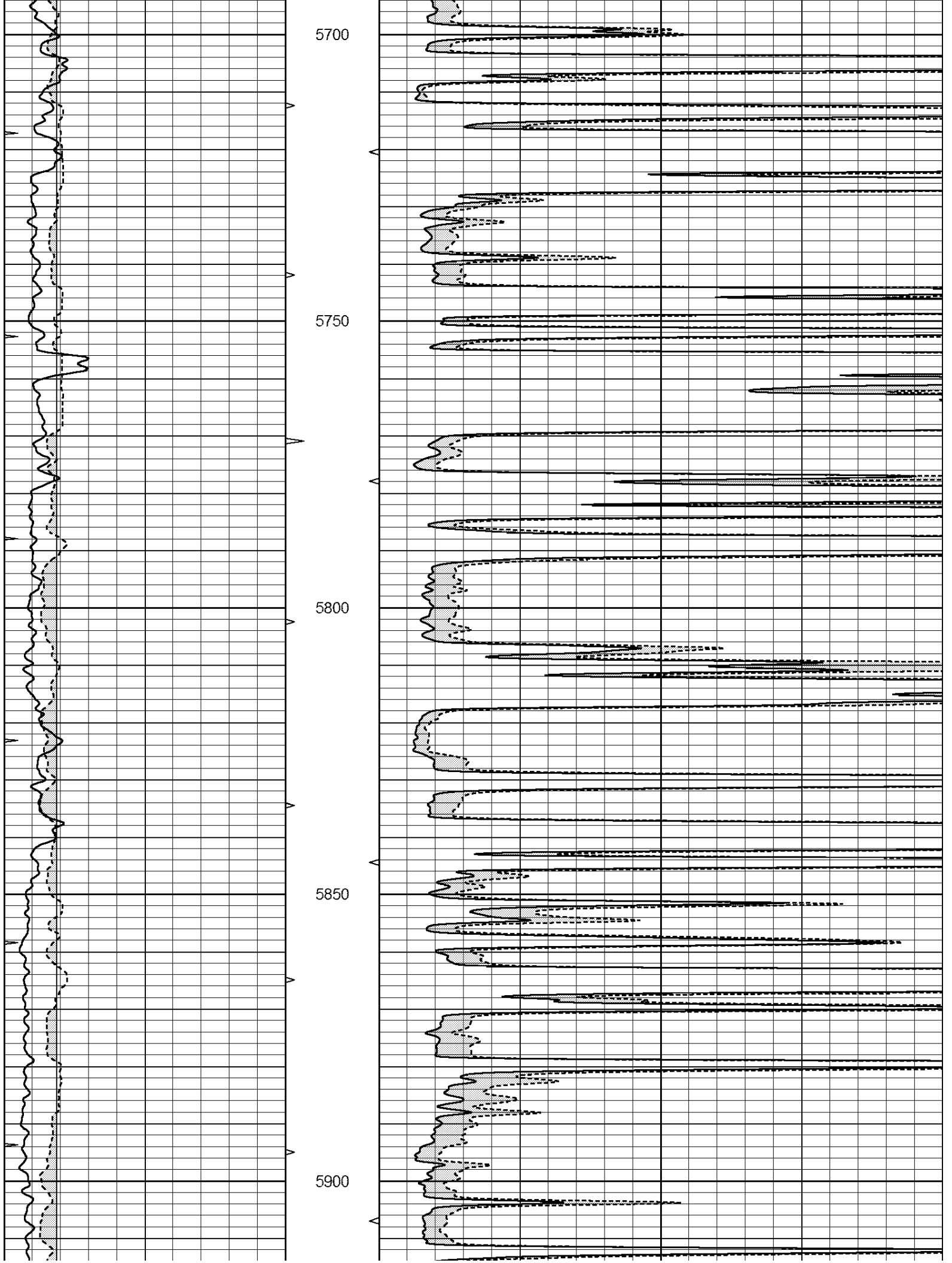


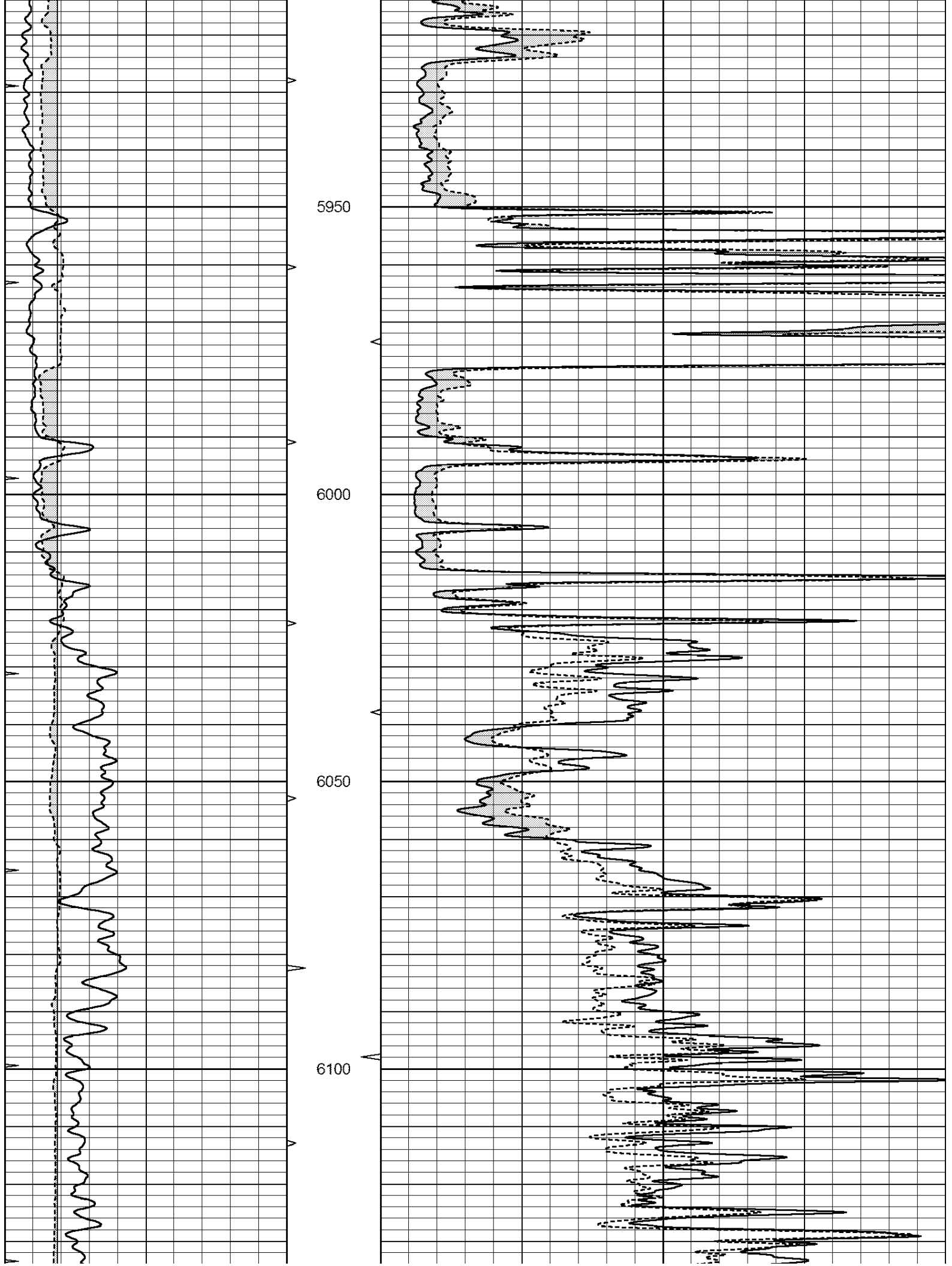


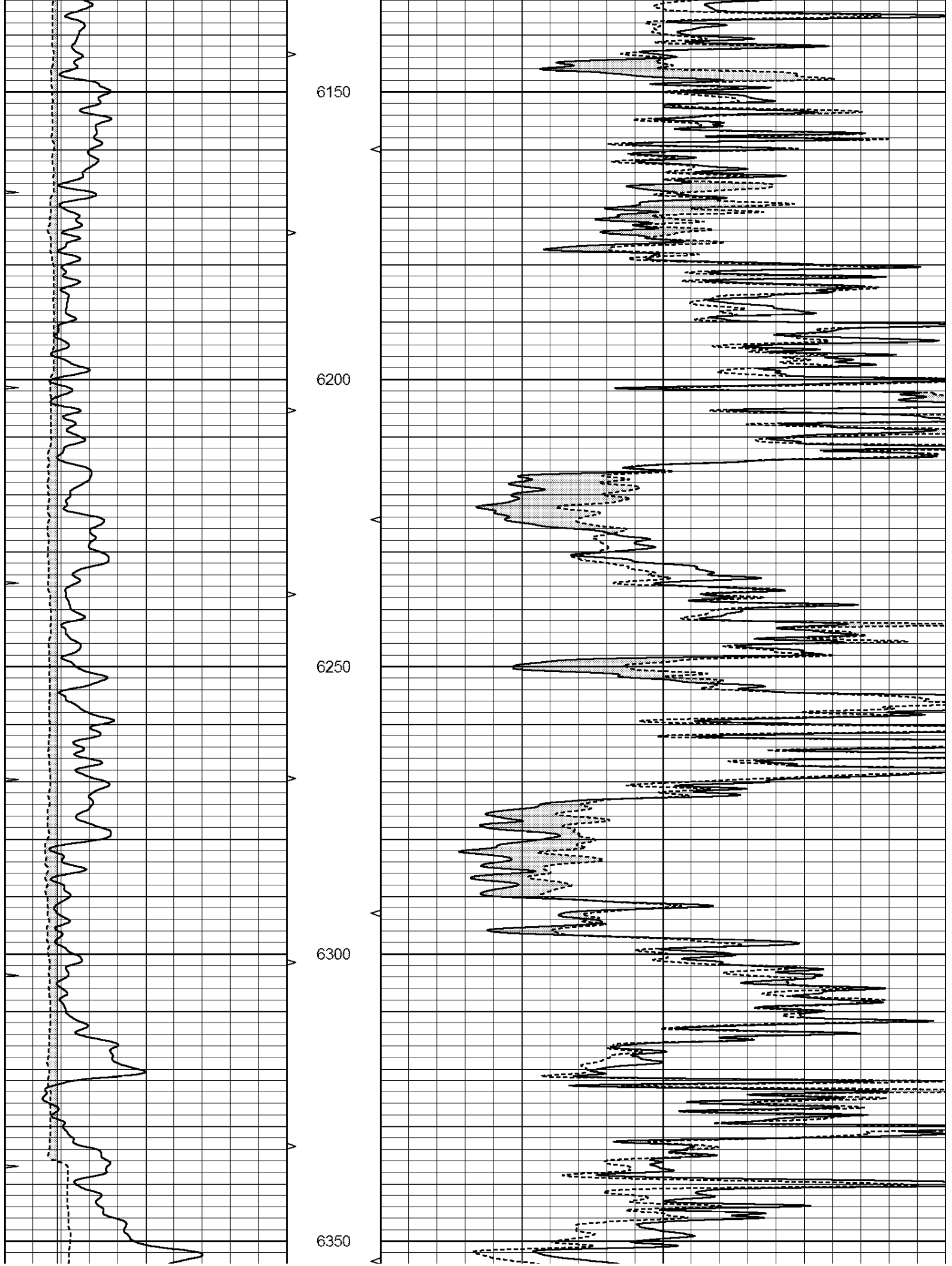


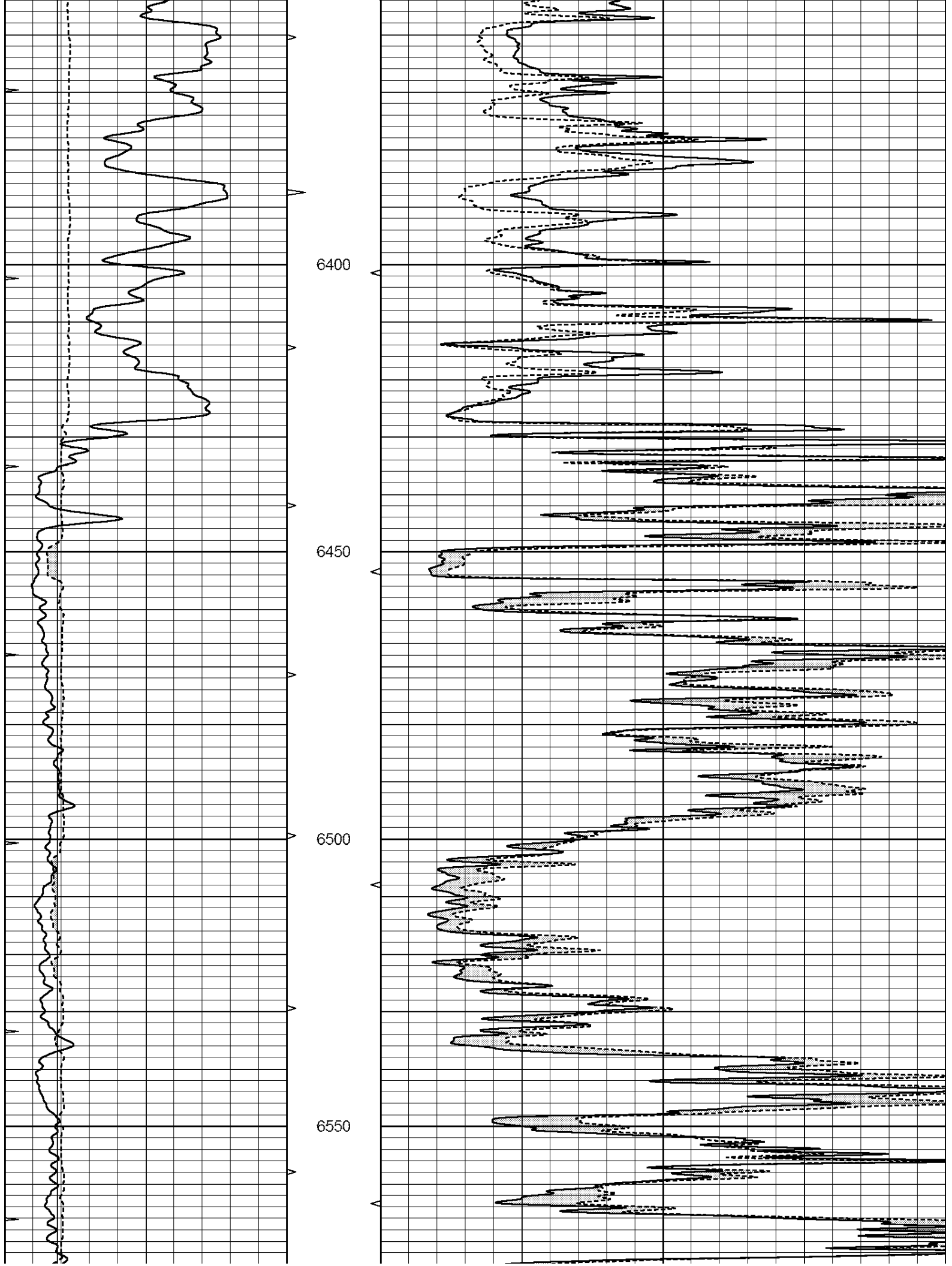


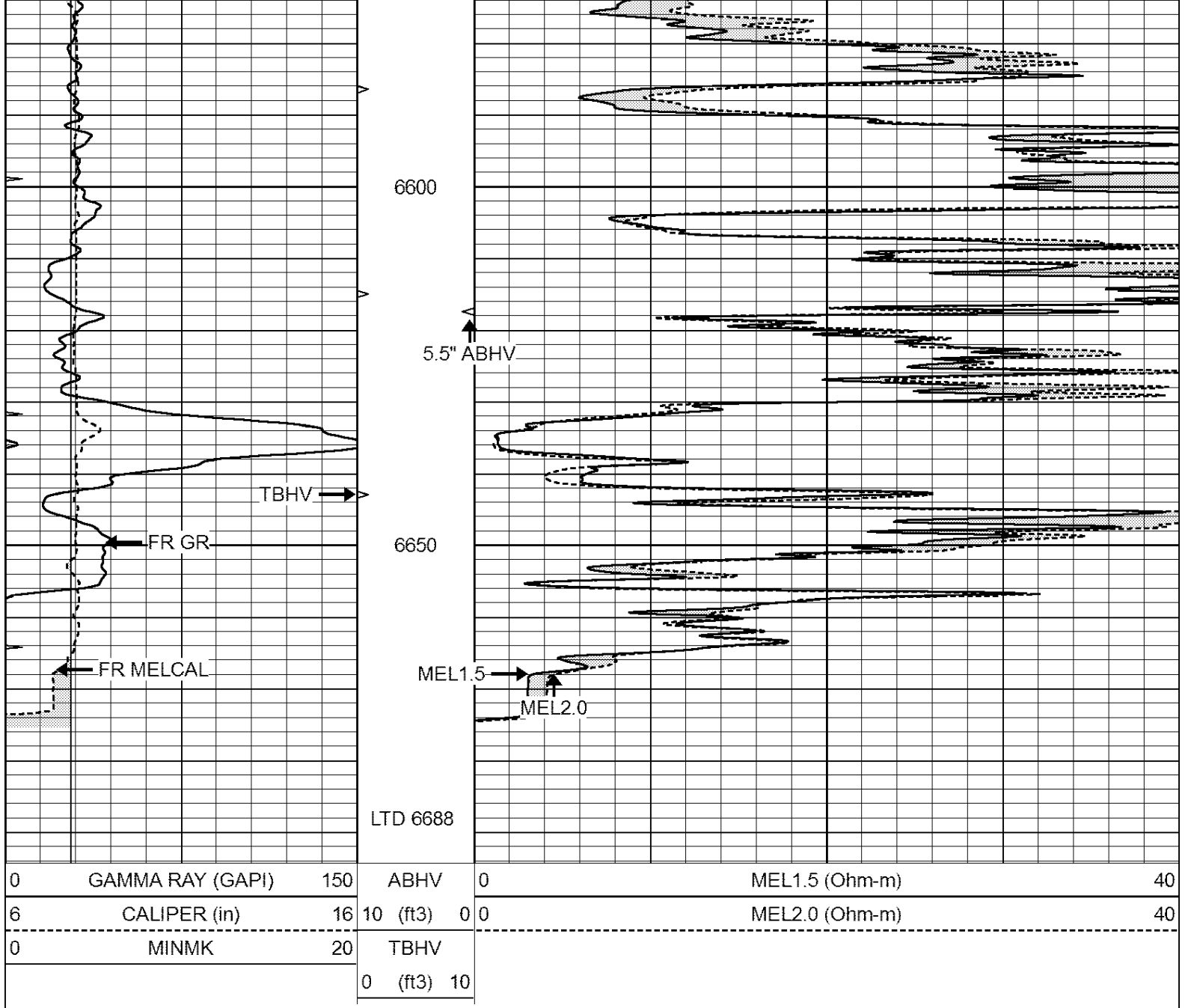










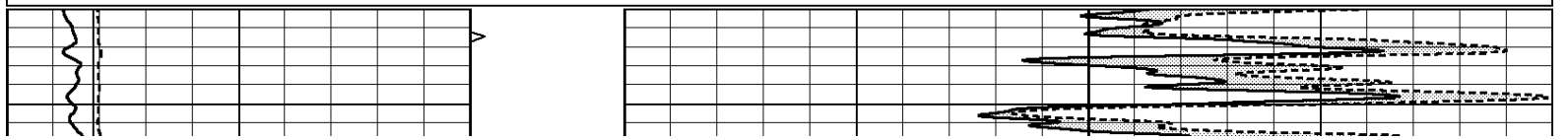


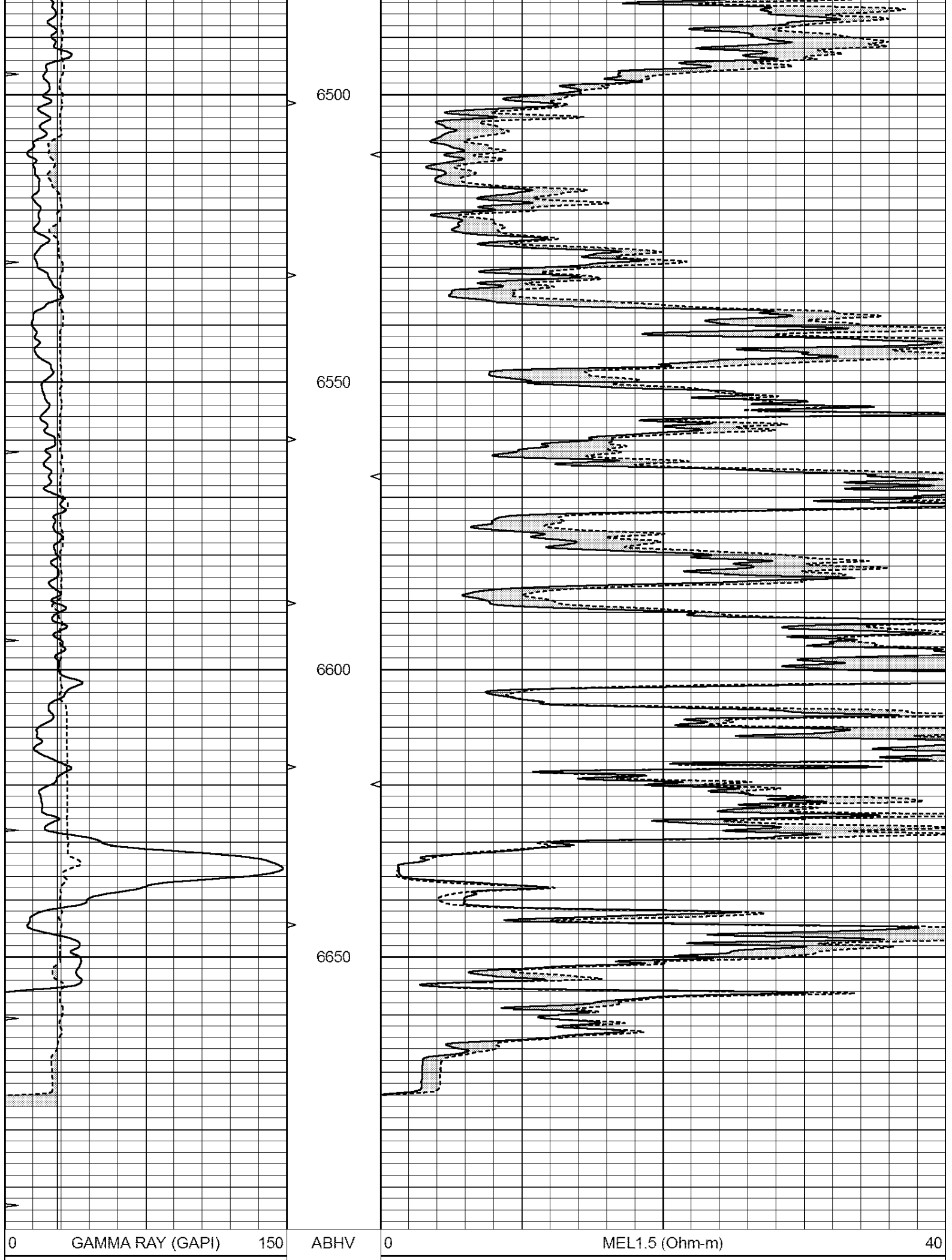
SUPERIOR
Hays,
Kansas

REPEAT SECTION

Database File: 409678pe.db
 Dataset Pathname: pass5.3
 Presentation Format: micro
 Dataset Creation: Thu Sep 20 00:33:08 2012
 Charted by: Depth in Feet scaled 1:240

0	GAMMA RAY (GAPI)	150	ABHV	0	MEL1.5 (Ohm-m)	40
6	CALIPER (in)	16	10 (ft3)	0	MEL2.0 (Ohm-m)	40
0	MINMK	20	TBHV			
			0 (ft3)	10		





6	CALIPER (in)	16	10 (ft3)	0 0	MEL2.0 (Ohm-m)	40
0	MINMK	20	TBHV			
			0 (ft3)	10		

Calibration Report

Database File: 409678pe.db
 Dataset Pathname: pass6.2
 Dataset Creation: Thu Sep 20 00:21:21 2012

MICRO Calibration Report

Serial Number: MICRO5
 Tool Model: PROBE
 Performed: Sun Sep 16 20:28:43 2012

Caliper Calibration: Gain=4.000 Offset=-8.400

	Low Cal	High Cal
References	8.000	16.000
Readings	4.100	6.100

1.5" Calibration: Gain=36.000 Offset=-0.500

	Low Cal	High Cal
References	0.000	20.000
Readings	-0.002	0.981

2" Calibration: Gain=40.000 Offset=-0.400

	Low Cal	High Cal
References	0.000	20.000
Readings	0.002	0.898

Gamma Ray Calibration Report

Serial Number: GR4
 Tool Model: OPEN
 Performed: Wed Sep 19 22:41:33 2012

Calibrator Value: 200.0 GAPI

Background Reading:	0.0	cps
Calibrator Reading:	189.0	cps

Sensitivity: 1.6000 GAPI/cps