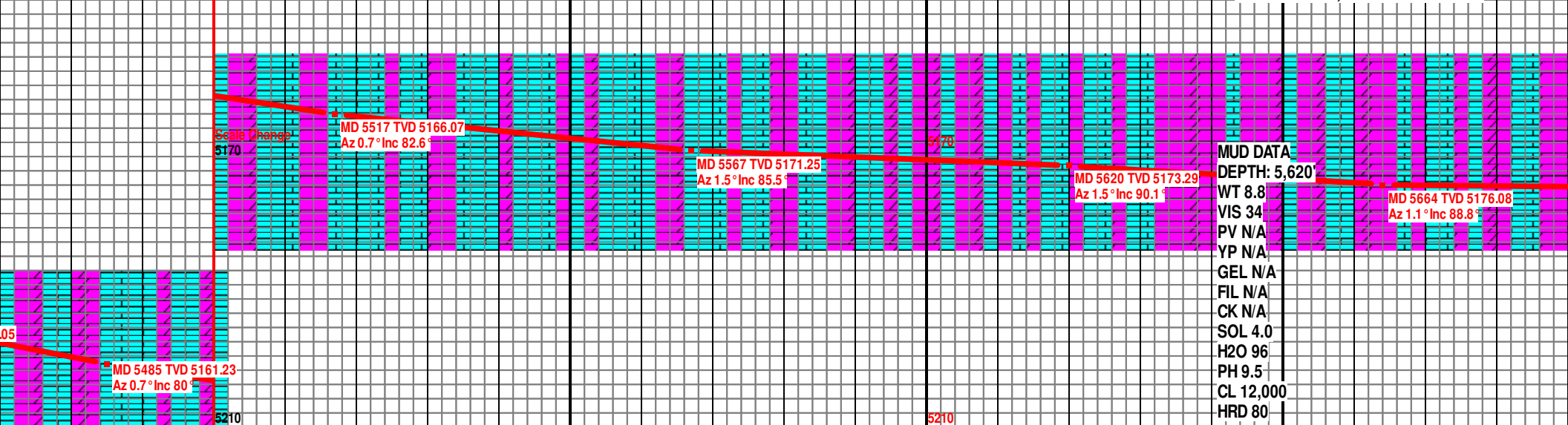
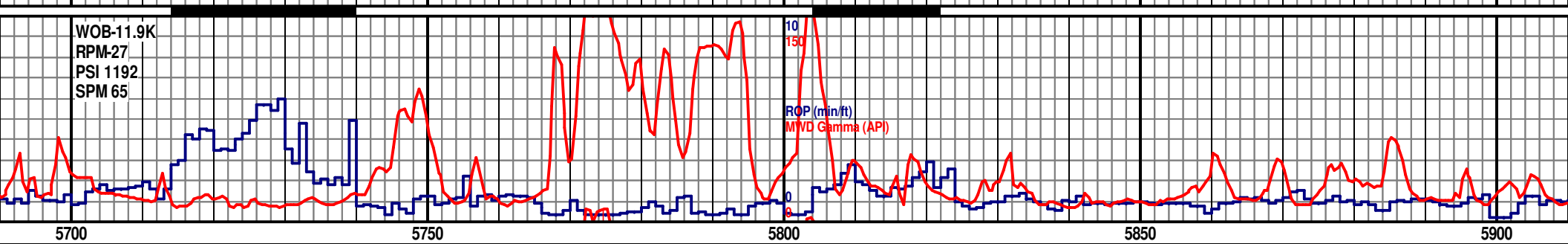
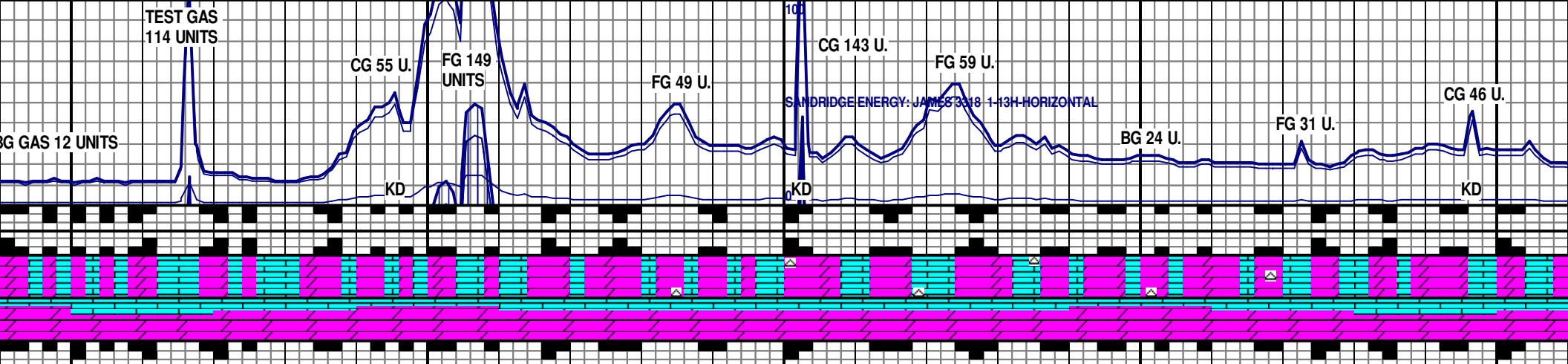


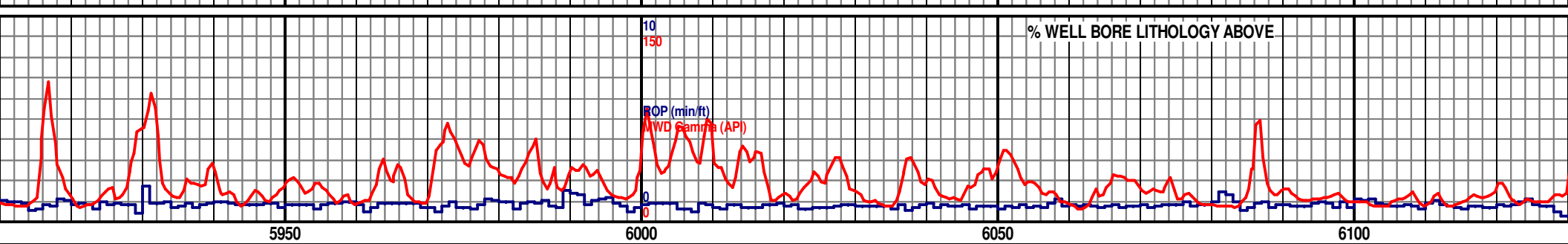
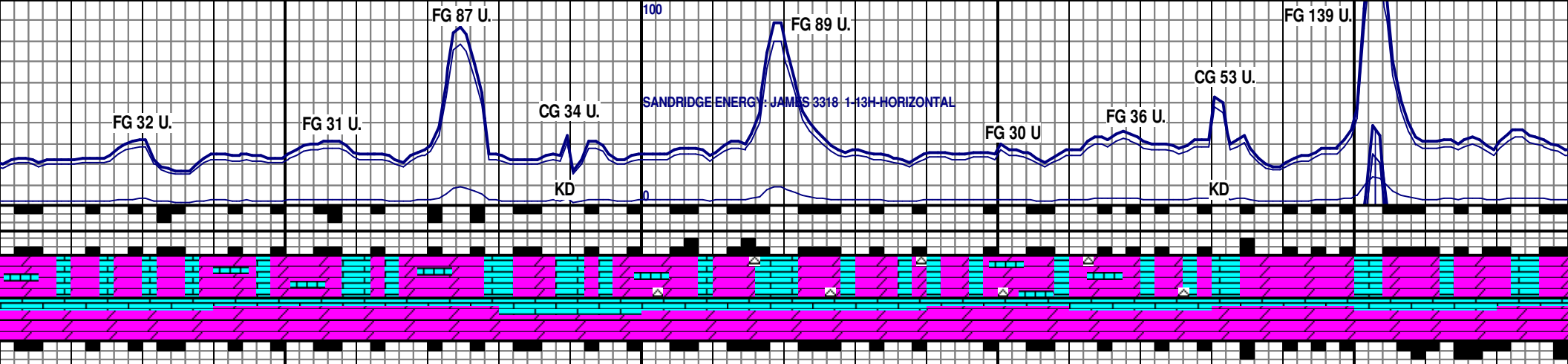
8/23/2012
5130 TVD
WH-LT TAN, PRED PLTY, SME BLKY, MOD FRM-FRM, OCC SFT, ANG, V FN-FN XLN, HL FRAC POR, DOL: PRED OFF WHT TO WHT MOTT TN, MOD FRM TO FRM, FN TO V FN XLN, PR R, GD WH MLKY CUT, FR WH/YEL RES RING

8/24/2012
5130 TVD
LS: PRED LT TAN- TAN, SME CRM- OFF WHT, PRED PLTY, OCC BLKY, PRED MOD FRM- FRM, SME SFT, SUB RND-SUB ANG, FN- MIC FN XLN, HL FRAC POR, DOL: PRED OFF WHT- CRM, SME OFF WHT MOTT LT TAN, BLKY- PLTY, PRED MOD FRM- FRM, FN- MIC FN XLN, PR DULL YEL FLOR, FR MLKY YEL CUT, MED YEL RES RING

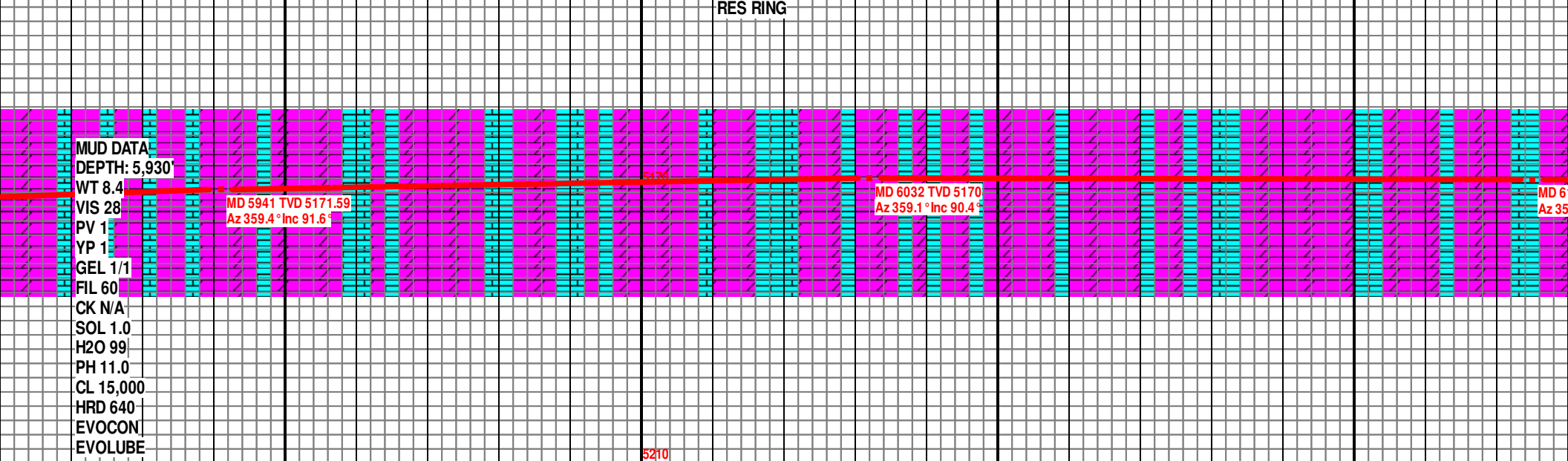
8/25/2012
5130 TVD
LS: PRE CRM- OFF WHT, OCC TN, PRED PLTY-BI PRED MOD FRM- FRM, SME SFT, SUB RND-SUB MIC FN XLN, HL FRAC POR, DOL: PRED OFF WH SME OFF WHT MOTT LT TAN, PLTY, PRED MOD FRM, SME SFT, FN- MIC FN XLN, FR-GD INTRXLN SME HL FRAC POR, FR-GD DULL YEL FLOR, FF MLKY YEL CUT, MED YEL RES RING





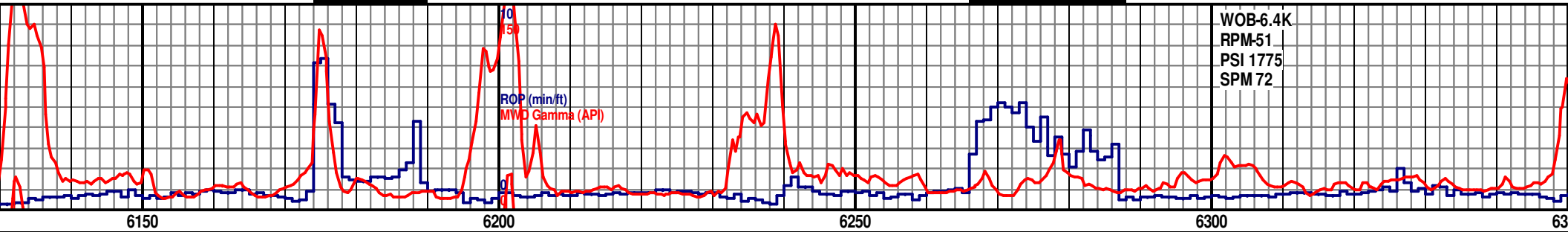
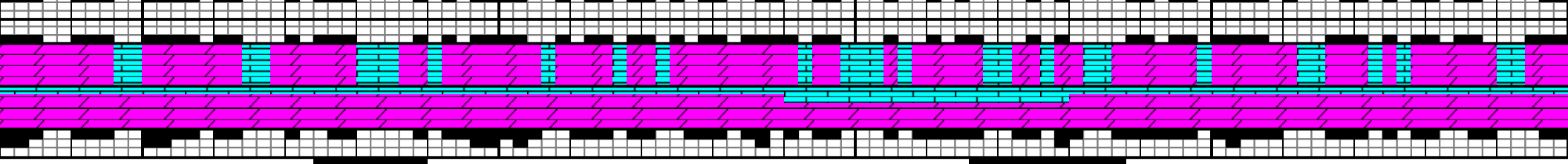
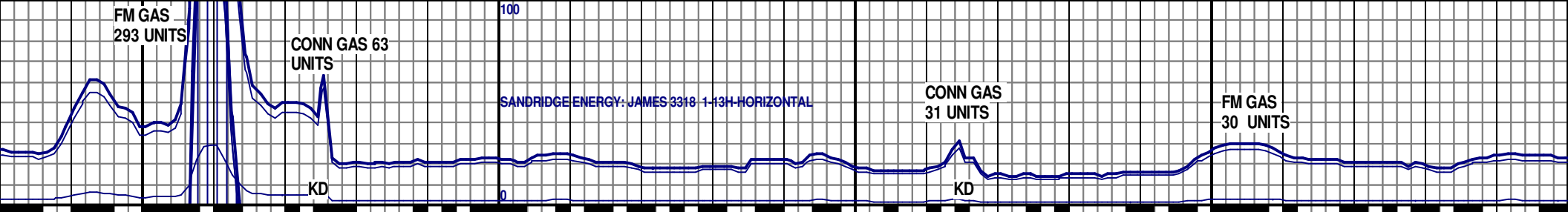


5950 6000 6050 6100
 DOL: PRED WHT- OFF WHT, ABUN CRM, PLTY, MOD FRM- FRM, MIC FN- FN XLN, SME HL FRAC POR, LS: PRED OFF WHT- CRM, ABUN CRM- LT TAN, TR MOTT CRM- LT GRY, PLTY- BLKY, MOD FRM- FRM, OCC SUB ANG- SUB RND, MIC FN- FN XLN, HL FRAC POR, FR BRI YEL-GLD FLOR, PR- FR MLKY YEL CUT, MED YEL RES RING
 DOL: MSTLY OFF WHT- WHT, SME CRM, PLTY- BLKY, PRED MOD FRM- FRM, TR SFT, FN- MIC FN XLN, HL FRAC POR, LS: MSTLY OFF WHT- CRM, SME CRM- LT TAN, TR MOTT CRM- LT GRY, BLKY- PLTY, PRED MOD FRM- FRM, SME SUB ANG- SUB RND, MIC FN- FN XLN, HL FRAC POR, LESS THAN 5% CHRT: OFF WHT-WHT, SUB ANG- SHRP, HRD- V HRD, FR- GD BRI YEL-GLD FLOR,, PR- FR MLKY YEL CUT, MED YEL RES RING
 DOL: MSTLY OFF WH SFT, FN- MIC FN XLN, TAN, TR MOTT CRM- ANG- SUB RND, MIC PR- FR MLKY YEL CU



MUD DATA
 DEPTH: 5,930'
 WT 8.4
 VIS 28
 PV 1
 YP 1
 GEL 1/1
 FIL 60
 CK N/A
 SOL 1.0
 H2O 99
 PH 11.0
 CL 15,000
 HRD 640
 EVOCON
 EVOLUBE

5210

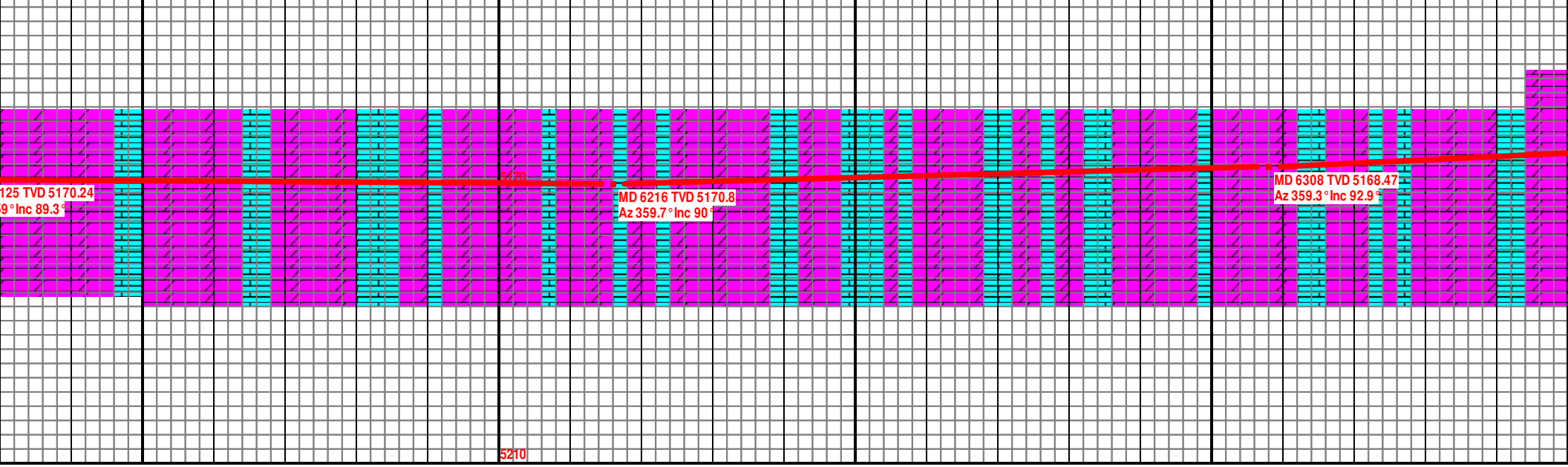


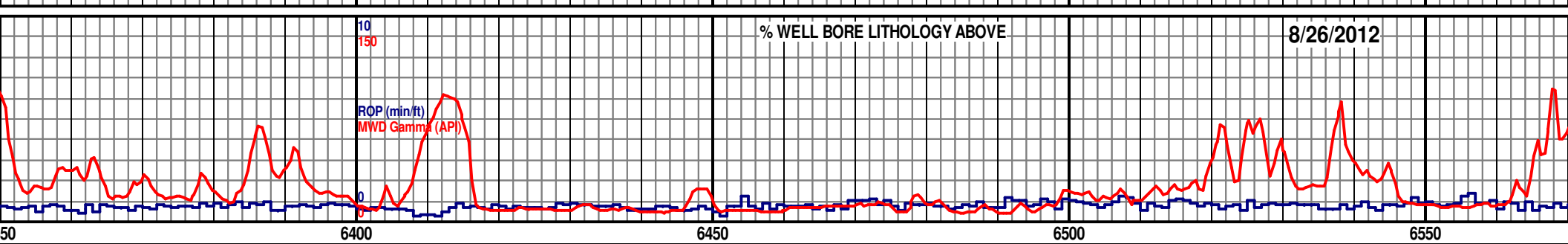
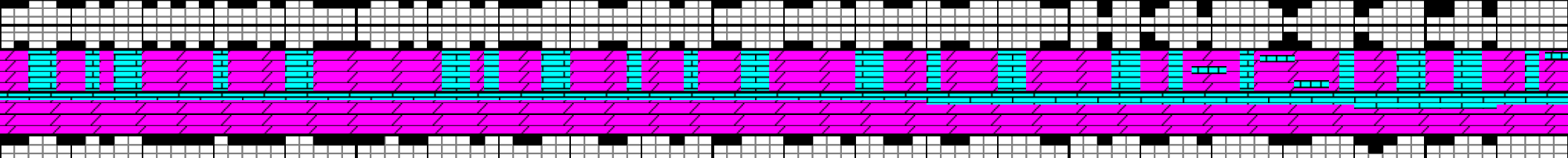
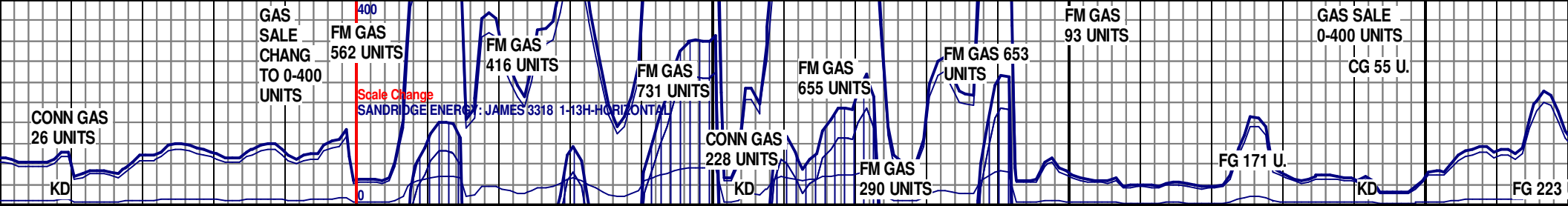
6150 6200 6250 6300 6350

5130 TVD

DOL: MSTLY OFF WHT- WHT, SME CRM, PLTY- BLKY, PRED MOD FRM- FRM, TR SFT, FN- MIC FN XLN, HL FRAC POR, LS: MSTLY OFF WHT- CRM, SME CRM- LT TAN, TR MOTT CRM- LT GRY, BLKY- PLTY, PRED MOD FRM- FRM, SME SUB ANG- SUB RND, MIC FN- FN XLN, HL FRAC POR, FR- GD BRI YEL-GLD FLOR, , PR- FR MLKY YEL CUT, MED YEL RES RING

DOL: MSTLY OFF WHT- WHT, SME CRM, PLT MIC FN XLN, HL FRAC POR, LS: MSTLY OFF LT GRY, BLKY- PLTY, PRED MOD FRM- FRM, FRAC POR, FR- GD BRI YEL-GLD FLOR, , PR





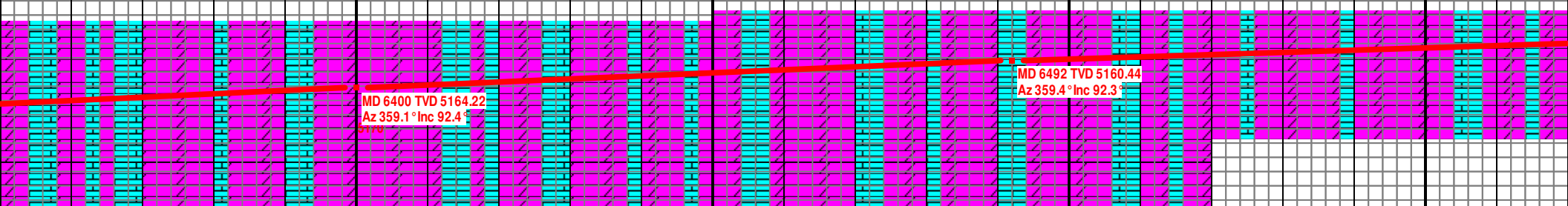
% WELL BORE LITHOLOGY ABOVE

8/26/2012

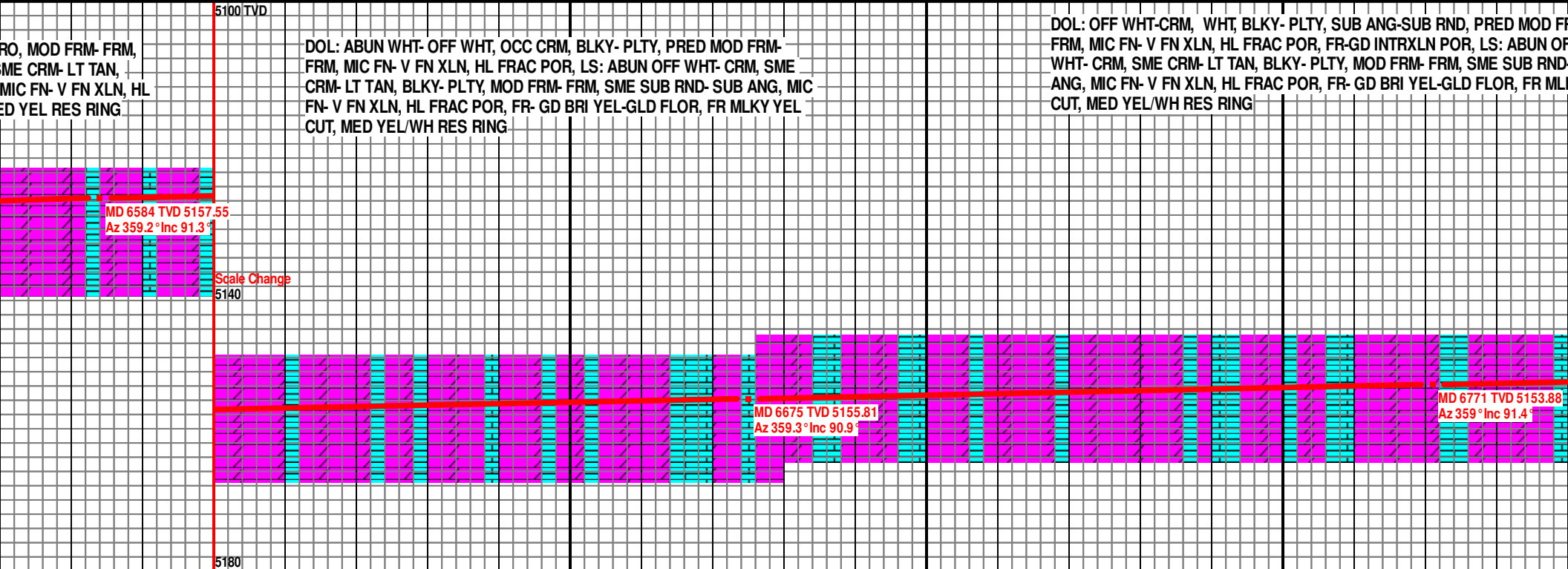
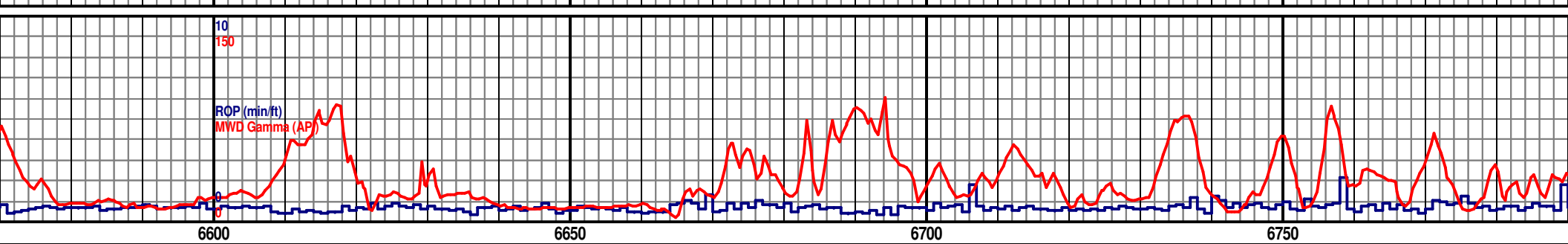
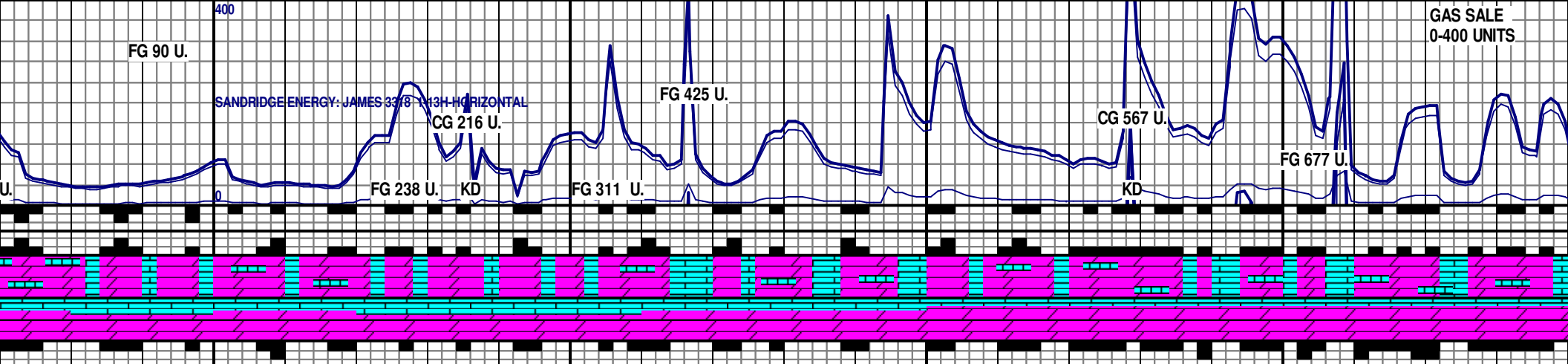
Y- BLKY, PRED MOD FRM- FRM, TR SFT, FN- WHT- CRM, SME CRM- LT TAN, TR MOTT CRM- SME SUB ANG- SUB RND, MIC FN- FN XLN, HL - FR MLKY YEL CUT, MED YEL RES RING

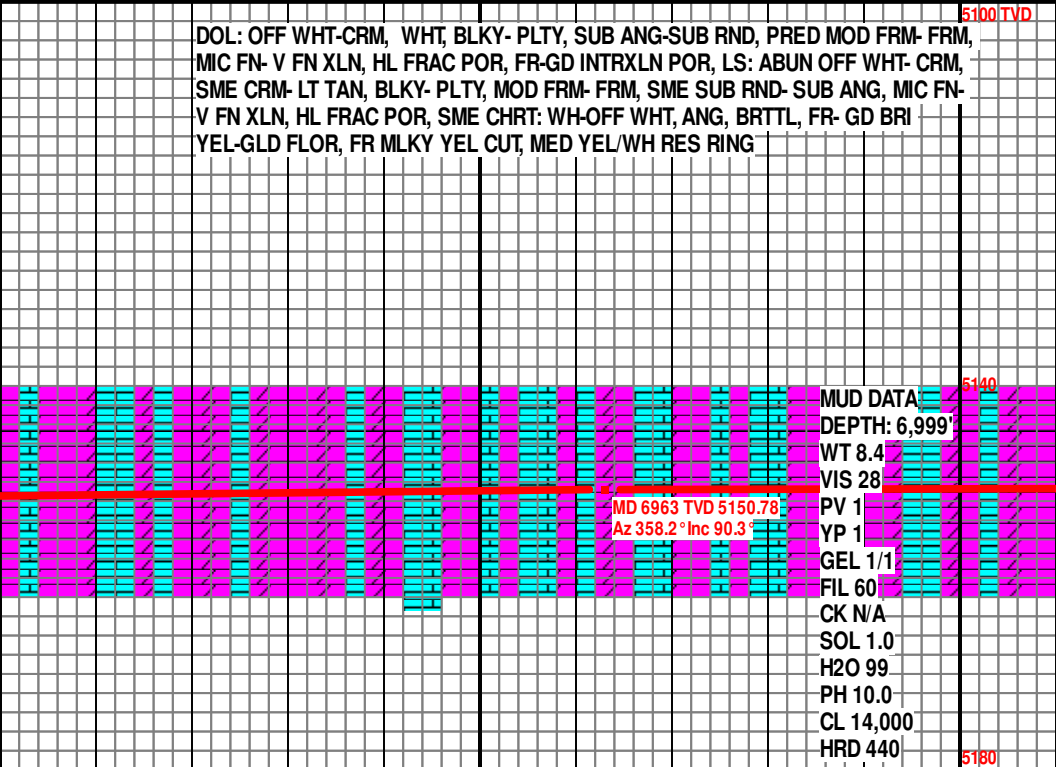
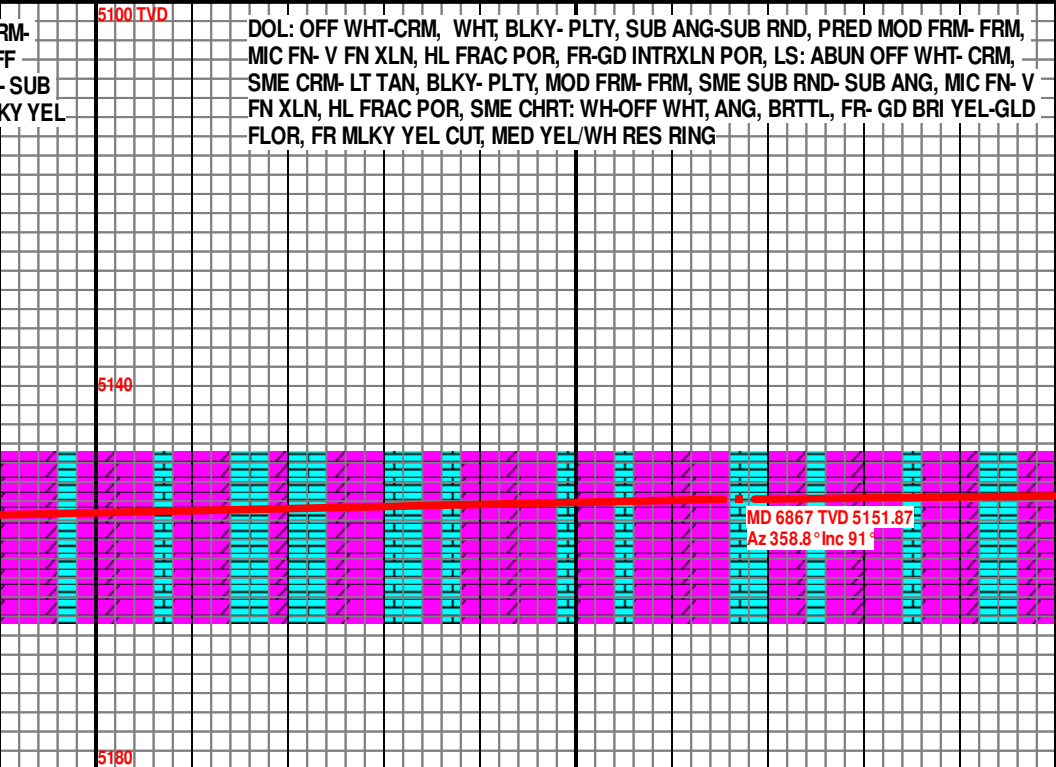
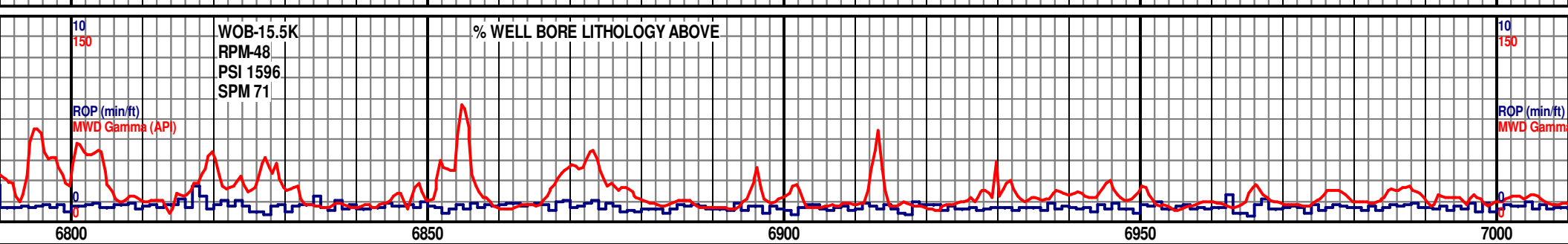
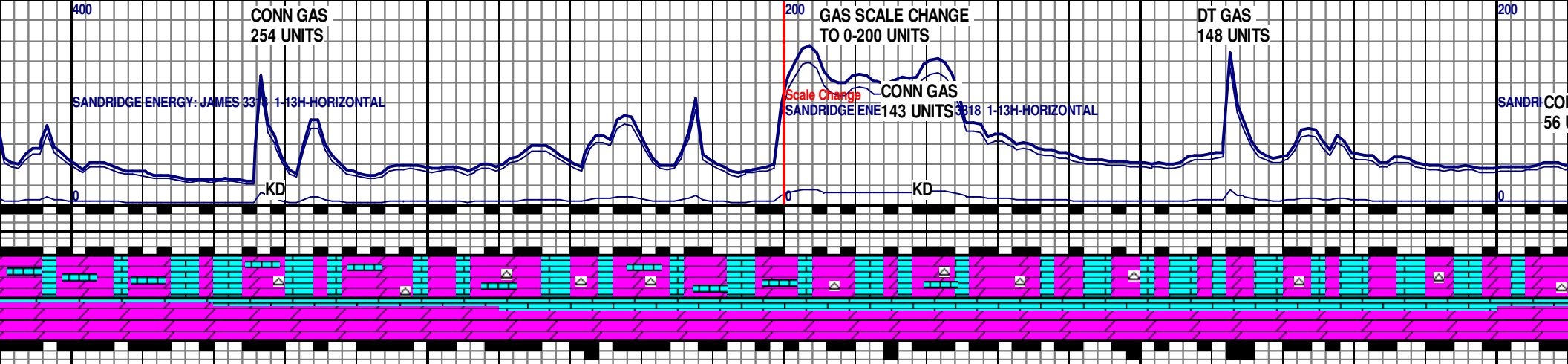
5130 TVD
DOL: MSTLY OFF WHT- WHT, SME CRM, PLTY- BLKY, PRED MOD FRM- FRM, TR SFT, FN- MIC FN XLN, HL FRAC POR, LS: MSTLY OFF WHT- CRM, SME CRM- LT TAN, TR MOTT CRM- LT GRY, BLKY- PLTY, PRED MOD FRM- FRM, SME SUB ANG- SUB RND, MIC FN- FN XLN, HL FRAC POR, FR- GD BRI YEL-GLD FLOR, PR- FR MLKY YEL CUT, MED YEL RES RING

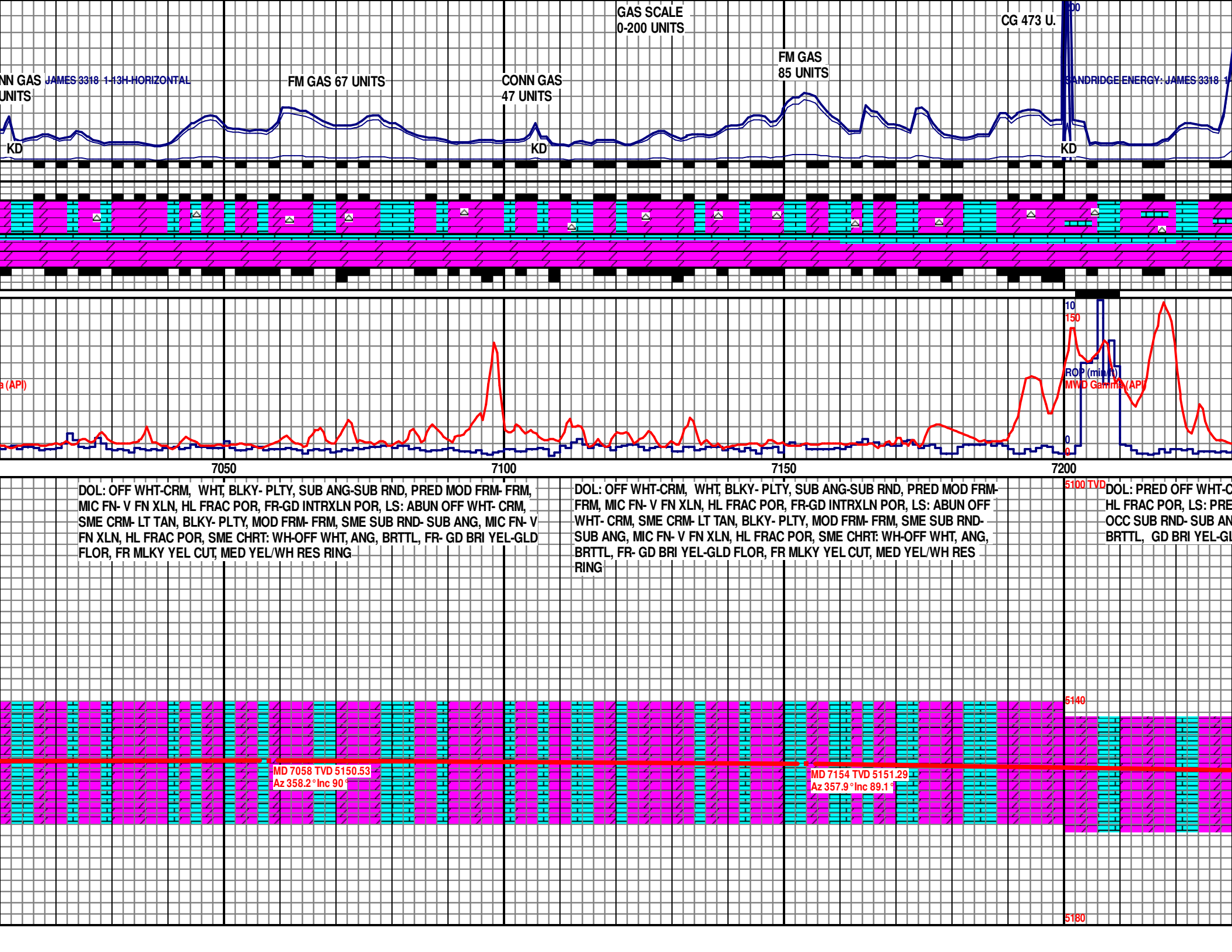
DOL: PRED WHT- OFF WHT, OCC CRM, BLKY- PLTY, OCC SUCR MIC FN- V FN XLN, HL FRAC POR, LS: PRED OFF WHT- CRM, S BLKY- PLTY, PRED MOD FRM- FRM, OCC SUB ANG- SUB RND, FRAC POR, FR- GD BRI YEL-GLD FLOR, FR MLKY YEL CUT, ME

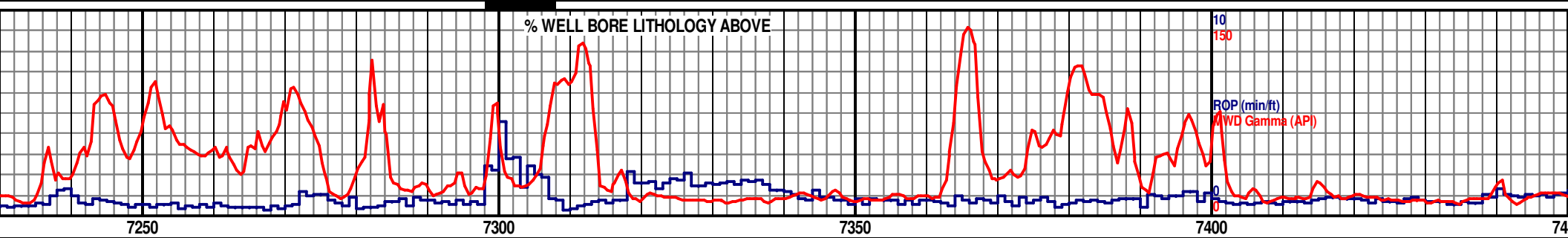
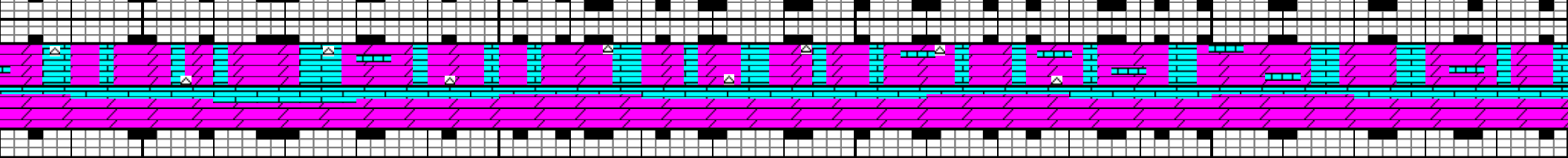
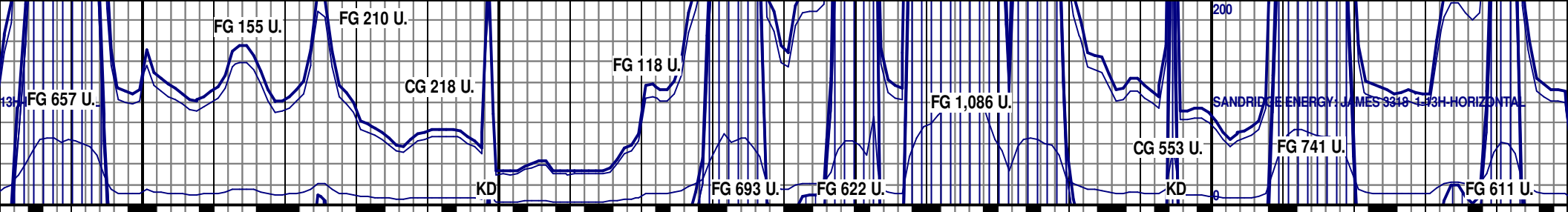


5210

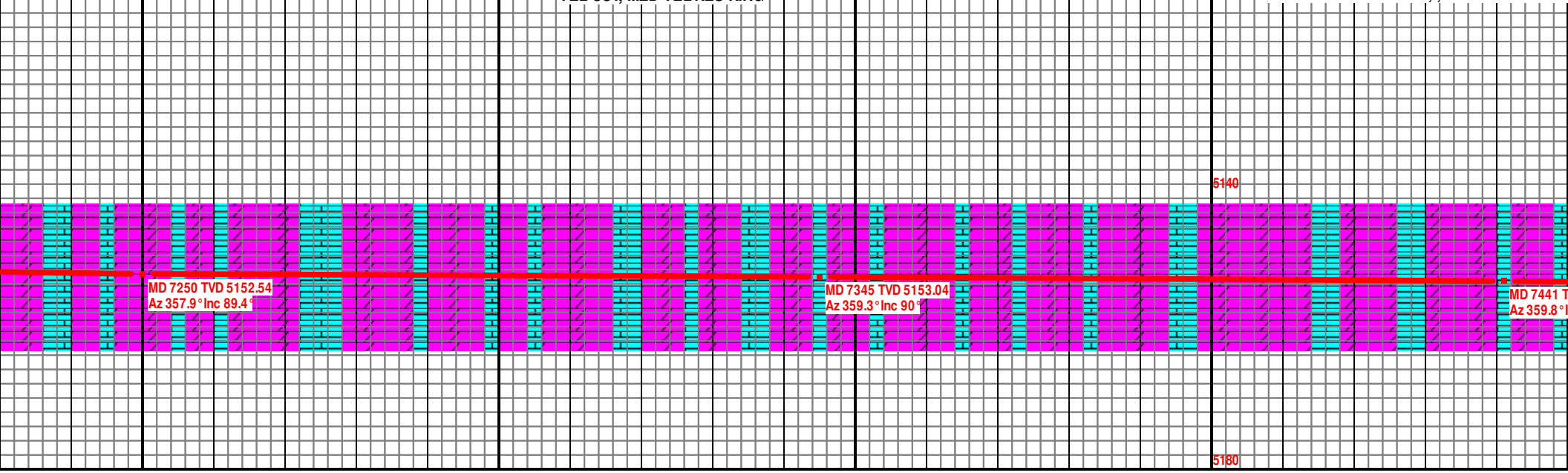


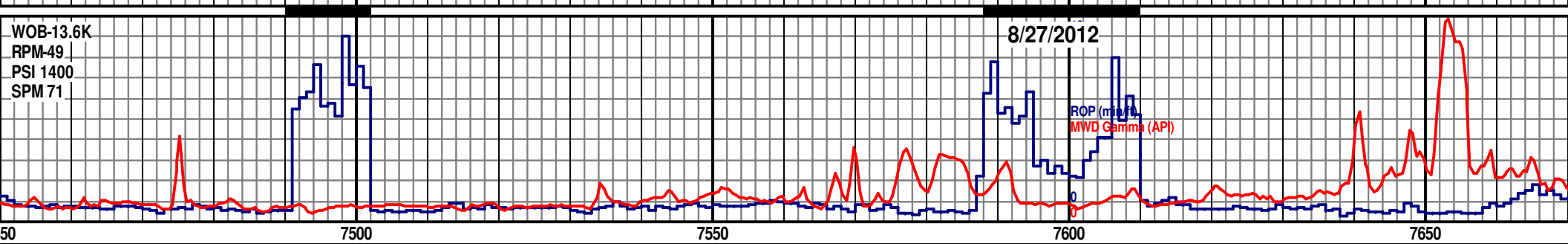
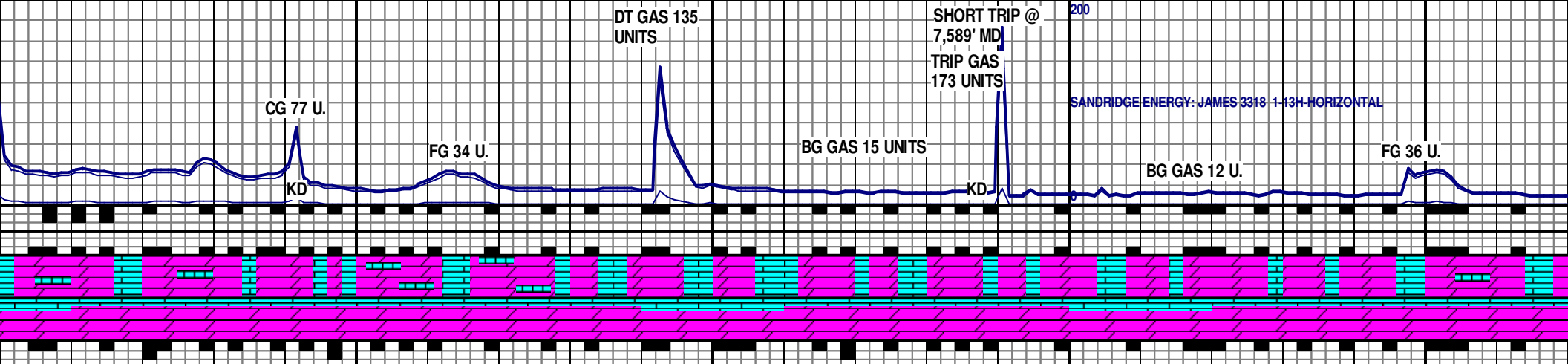






<p>FRM, OCC WHT, PLTY- BLKY, PRED MOD FRM- FRM, MIC FN- FN XLN, D OFF WHT- CRM, SME CRM- LT TAN, PLTY- BLKY, MOD FRM- FRM, G, FN- MIC FN XLN, HL FRAC POR, SME CRT: WH-OFF WHT, ANG, D FLOR, FR MLKY YEL CUT, MED YEL RES RING</p>	<p>DOL: ABUN OFF WHT-CRM, SME WHT, PLTY- BLKY, MOD FRM- FRM, MIC FN- FN XLN, SME HL FRAC POR, LS: PRED OFF WHT- CRM, SME CRM- LT TAN, PLTY- BLKY, PRED MOD FRM- FRM, SUB RND- SUB ANG, FN- MIC FN XLN, HL FRAC POR, MIN SCAT CRT: WH-OFF WHT, ANG, MOD FRM-HRD GD BRI YEL-GLD FLOR, , FR MLKY YEL CUT, MED YEL RES RING</p>	<p>DOL: MSTLY CRM- OFF WHT, OCC WHT, PR MIC FN XLN, HL FRAC POR, LS: MSTLY OFF BLKY, PRED MOD FRM- FRM, SUB RND- SUB GD BRI YEL-GLD FLOR, , FR MLKY YEL CUT</p>
--	---	---

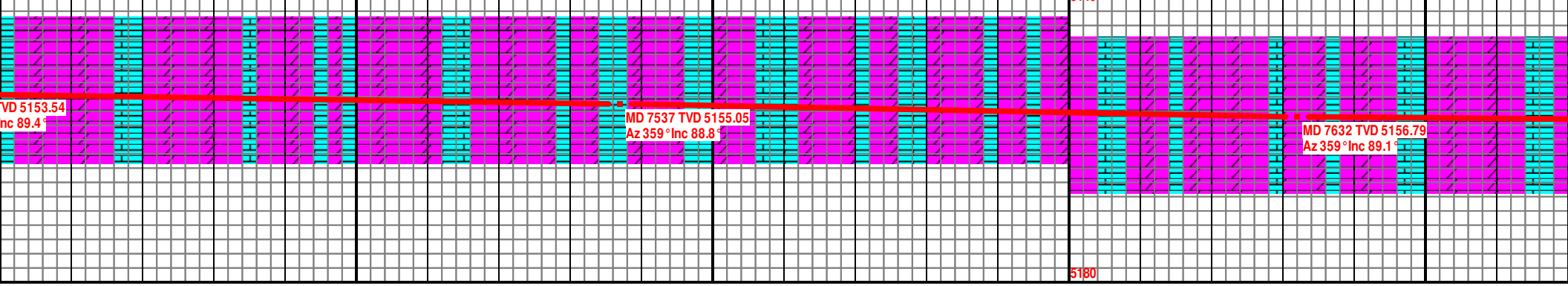


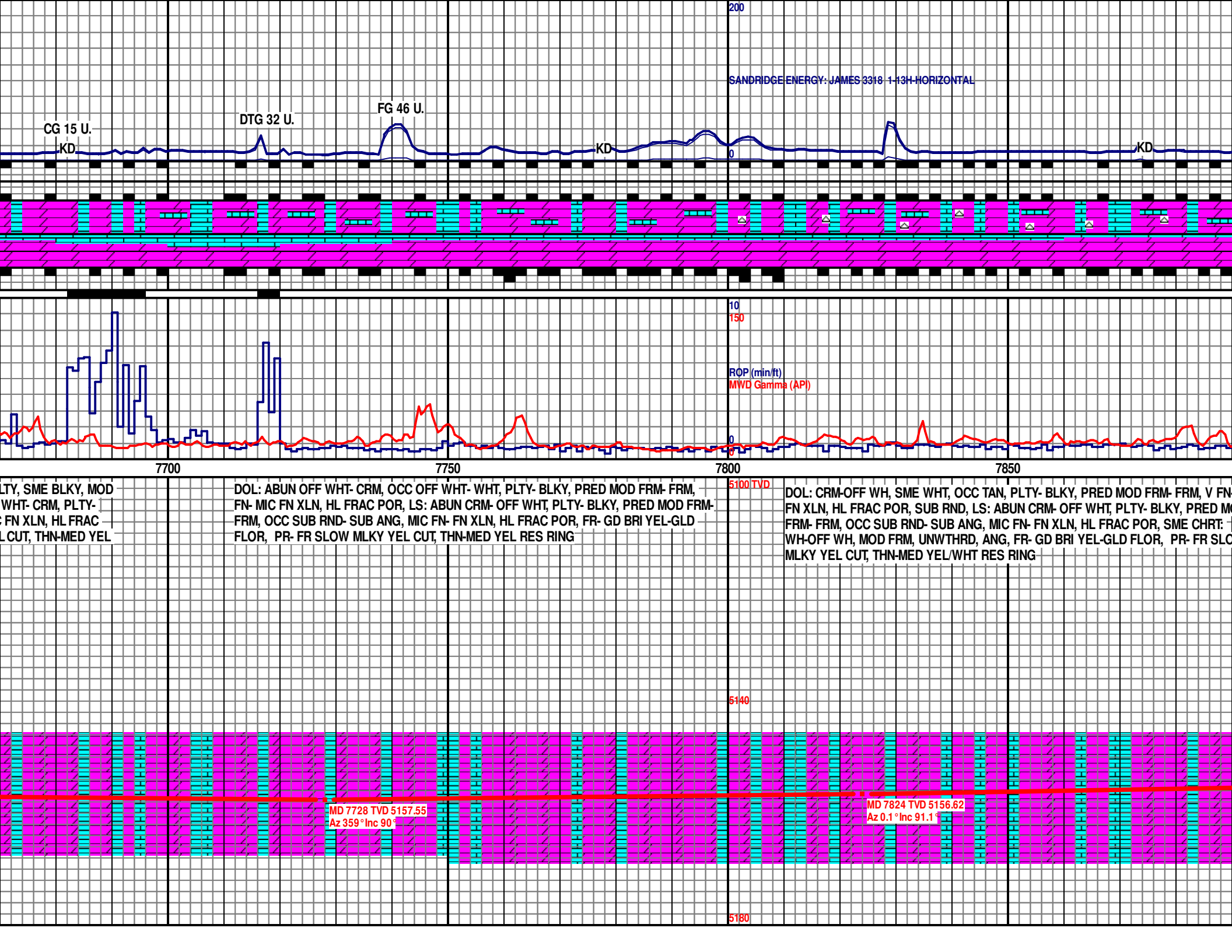


ED PLTY, SME BLKY, MOD FRM- FRM, FN-
 WHT- CRM, OCC CRM- LT TAN, PLTY-
 B ANG, FN- MIC FN XLN, HL FRAC POR,
 T, MED YEL RES RING

DOL: MSTLY CRM- OFF WHT, OCC WHT, PRED PLTY, SME BLKY, MOD FRM-
 FRM, FN- MIC FN XLN, HL FRAC POR, LS: MSTLY OFF WHT- CRM, OCC CRM- LT
 TAN, PLTY- BLKY, PRED MOD FRM- FRM, SUB RND- SUB ANG, FN- MIC FN XLN,
 HL FRAC POR, GD BRI YEL-GLD FLOR, , FR MLKY YEL CUT, MED YEL RES
 RING

DOL: PRED OFF WHT- CRM, SME OFF WHT- WHT, PRED P
 FRM- FRM, MIC FN- FN XLN, HL FRAC POR, LS: PRED OFF
 BLKY, PRED MOD FRM- FRM, SUB RND- SUB ANG, FN- MIC
 POR, FR- GD BRI YEL-GLD FLOR, PR- FR SLOW MLKY YEL
 RES RING





SANDRIDGE ENERGY: JAMES 3318-1-13H HORIZONTAL

CG 15 U.

DTG 32 U.

FG 46 U.

KD

KD

10

150

ROP (min/ft)

MWD Gamma (API)

7700

7750

7800

7850

LTY, SME BLKY, MOD
WHT- CRM, PLTY-
FN XLN, HL FRAC
LCUT, THN-MED YEL

DOL: ABUN OFF WHT- CRM, OCC OFF WHT- WHT, PLTY- BLKY, PRED MOD FRM- FRM,
FN- MIC FN XLN, HL FRAC POR, LS: ABUN CRM- OFF WHT, PLTY- BLKY, PRED MOD FRM-
FRM, OCC SUB RND- SUB ANG, MIC FN- FN XLN, HL FRAC POR, FR- GD BRI YEL-GLD
FLOR, PR- FR SLOW MLKY YEL CUT, THN-MED YEL RES RING

5100 TVD

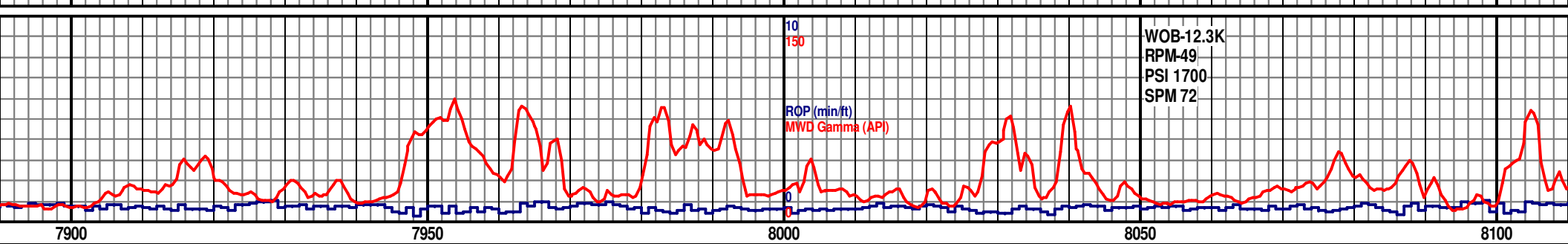
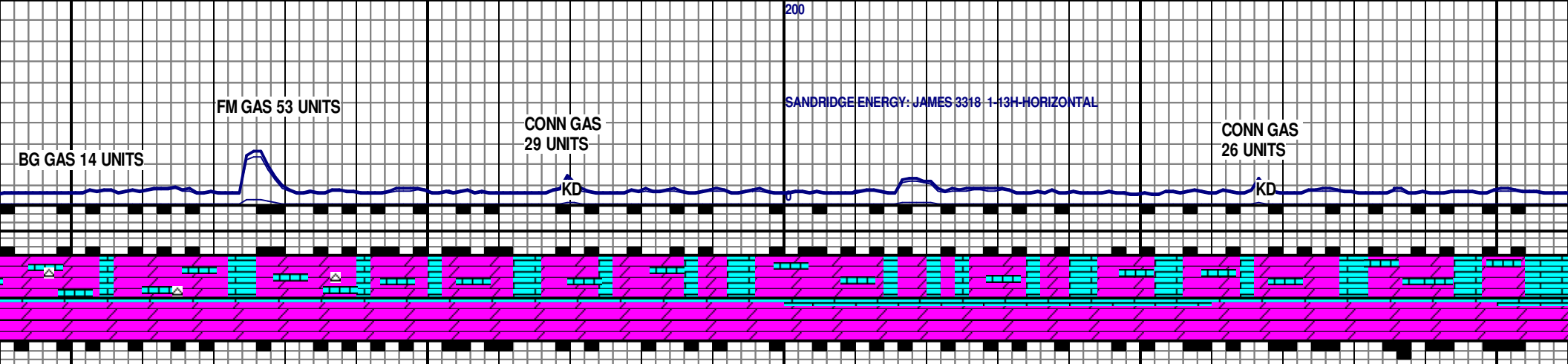
DOL: CRM-OFF WH, SME WHT, OCC TAN, PLTY- BLKY, PRED MOD FRM- FRM, V FN
FN XLN, HL FRAC POR, SUB RND, LS: ABUN CRM- OFF WHT, PLTY- BLKY, PRED M
FRM- FRM, OCC SUB RND- SUB ANG, MIC FN- FN XLN, HL FRAC POR, SME CHRT:
WH-OFF WH, MOD FRM, UNWTHRD, ANG, FR- GD BRI YEL-GLD FLOR, PR- FR SLO
MLKY YEL CUT, THN-MED YEL/WHT RES RING

5140

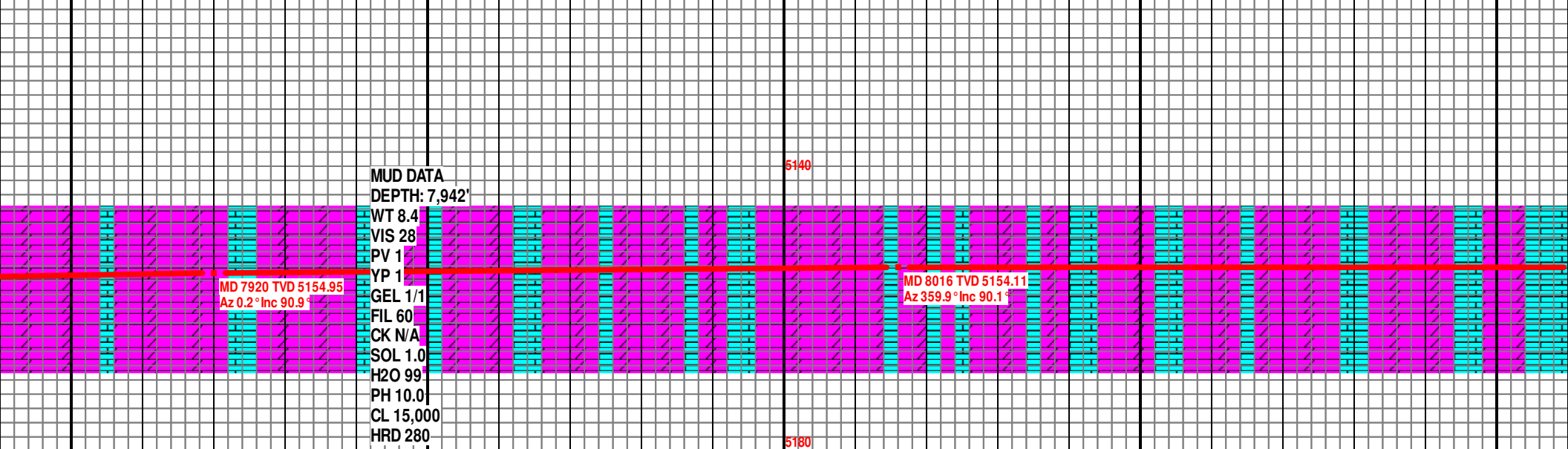
MD 7728 TVD 5157.55
Az 359° Inc 90°

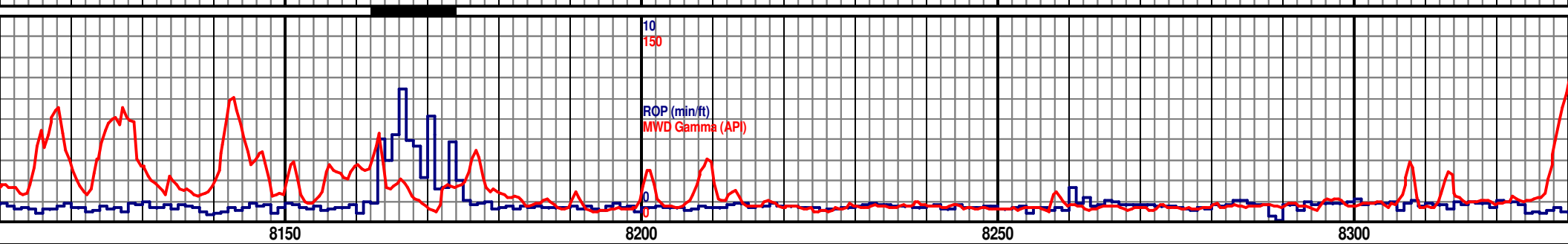
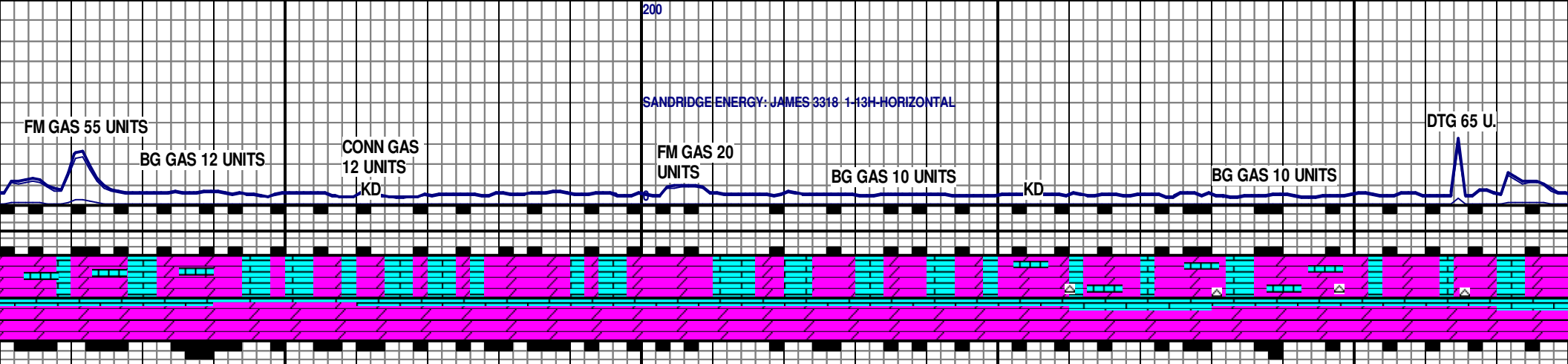
MD 7824 TVD 5156.62
Az 0.1° Inc 91.1°

5180



DOL: CRM-OFF WH, SME WHT, OCC TAN, PLTY- BLKY, PRED MOD FRM- FRM, V FN- MIC FN XLN, HL FRAC POR, SUB RND, LS: ABUN CRM- OFF WHT, PLTY- BLKY, PRED MOD FRM- FRM, OCC SUB RND- SUB ANG, MIC FN- FN XLN, HL FRAC POR, SME CHRT: WH-OFF WH, MOD FRM, UNWTHRD, ANG, FR- GD BRI YEL-GLD FLOR, PR- FR SLOW MLKY YEL CUT, THN-MED YEL/WHT RES RING

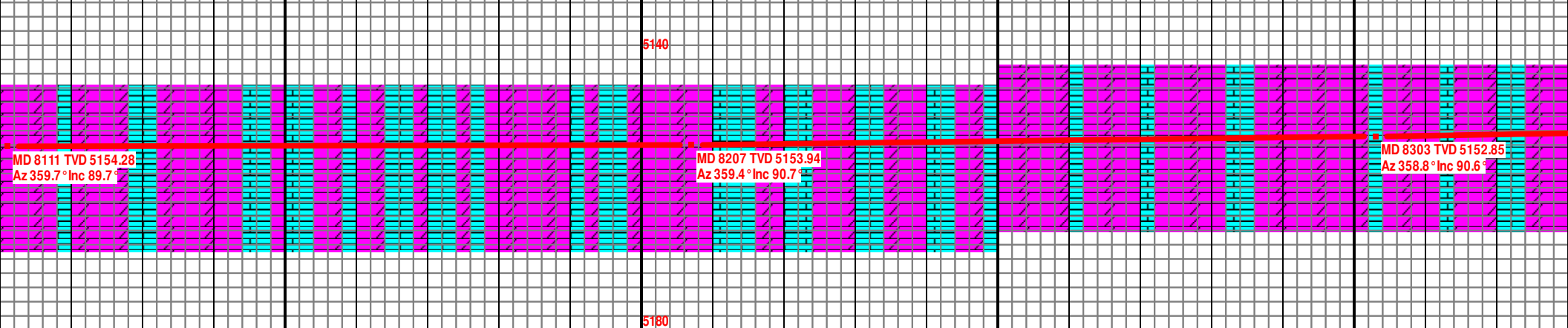


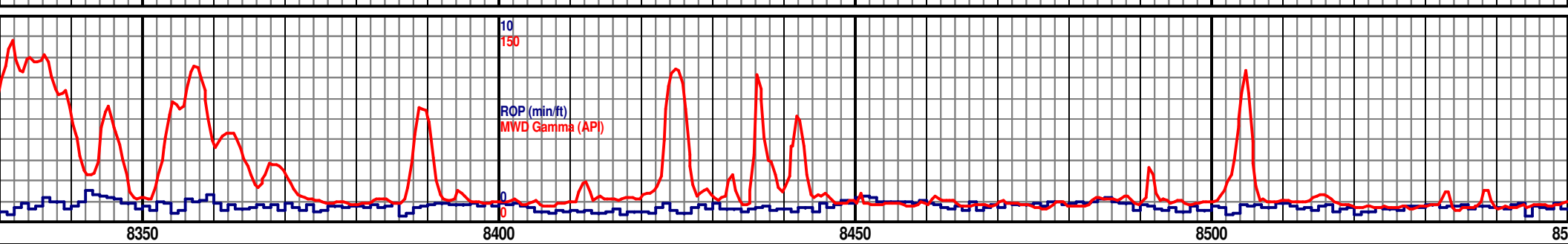
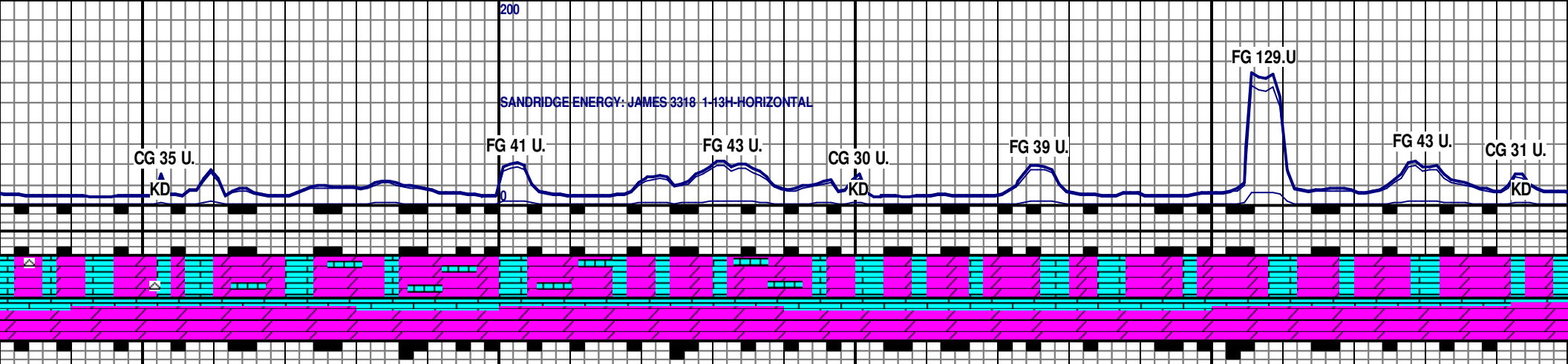


DOL: CRM-OFF WH, SME WHT, OCC TAN, PLTY- BLKY, PRED MOD FRM- FRM, V FN- MIC FN XLN, HL FRAC POR, SUB RND, LS: ABUN CRM- OFF WHT, PLTY- BLKY, PRED MOD FRM- FRM, OCC SUB RND- SUB ANG, MIC FN- FN XLN, HL FRAC POR, SME CHRT: WH-OFF WH, MOD FRM, UNWTHRD, ANG, FR- GD BRI YEL-GLD FLOR, PR- FR SLOW MLKY YEL CUT, THN-MED YEL/WHT RES RING

DOL: CRM-OFF WH, SME WHT, OCC TAN, PLTY- BLKY, PRED MOD FRM- FRM, V FN- MIC FN XLN, HL FRAC POR, SUB RND, LS: ABUN CRM- OFF WHT, PLTY- BLKY, PRED MOD FRM- FRM, OCC SUB RND- SUB ANG, MIC FN- FN XLN, HL FRAC POR, SME CHRT: WH-OFF WH, MOD FRM, UNWTHRD, ANG, FR- GD BRI YEL-GLD FLOR, PR- FR SLOW MLKY YEL CUT, THN-MED YEL/WHT RES RING

DOL: PRED OFF WH, FRM, FN- MIC FN XLN, BLKY, PRED MOD FRM- FRM, FRAC POR, TR CHR FLOR, PR- FR MLKY

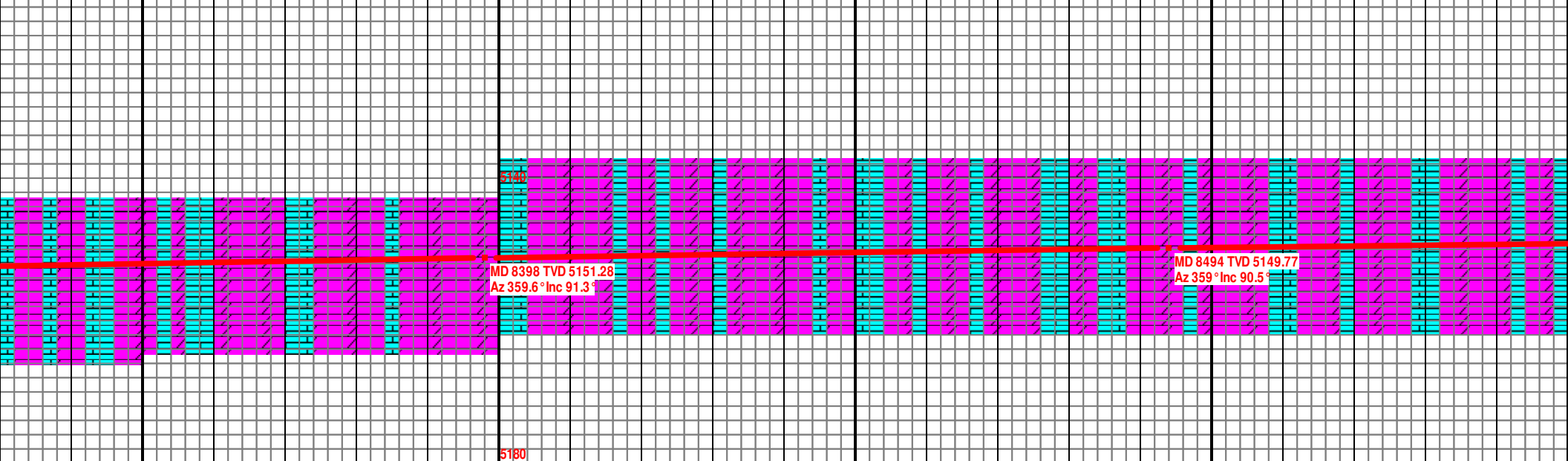


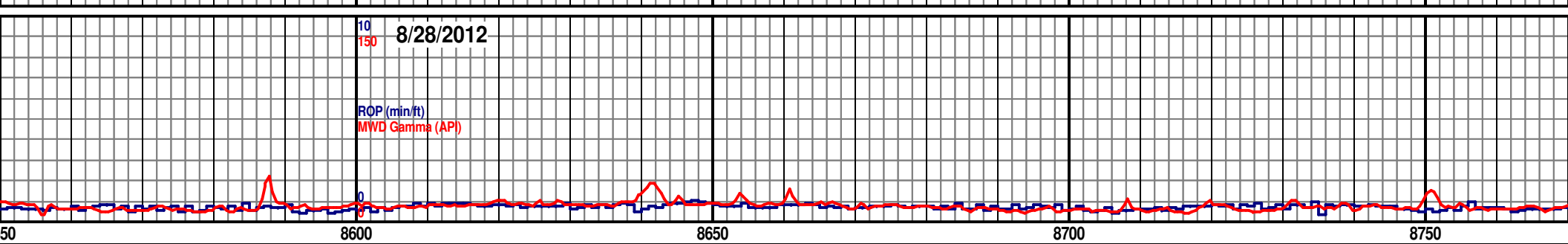
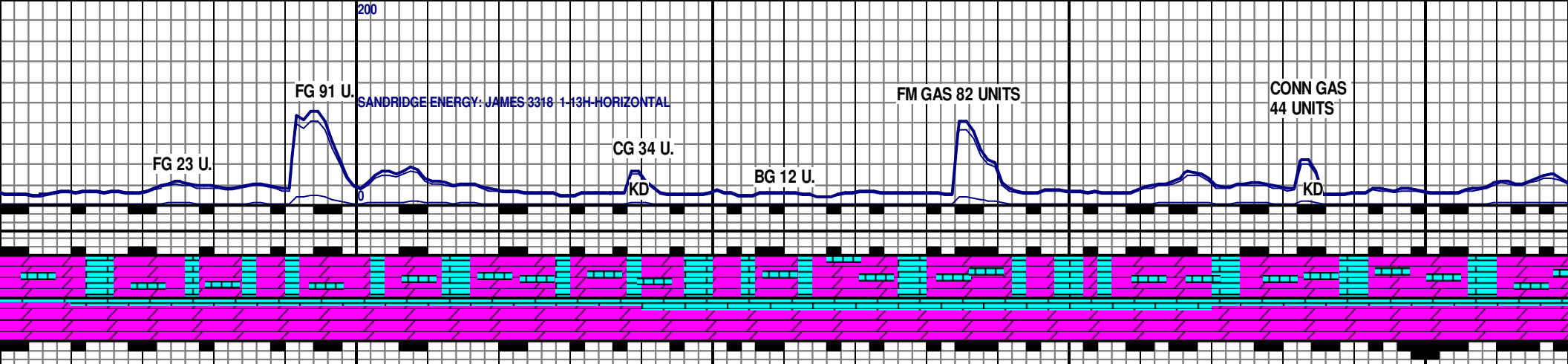


IT- CRM, SME WHT, OCC TAN, PLTY- BLKY, PRED MOD FRM-
 N, HL FRAC POR, SUB RND, LS: PRED CRM- OFF WHT, PLTY-
 RM- FRM, OCC SUB RND- SUB ANG, MIC FN- FN XLN, HL
 T: WHT-OFF WHT, MOD FRM, ANG, FR- GD BRI YEL-GLD
 Y YEL CUT, THN-MED YEL RES RING

DOL: PRED OFF WHT- CRM, SME WHT, OCC TAN, PLTY- BLKY, PRED MOD FRM-
 FRM, FN- MIC FN XLN, HL FRAC POR, SUB RND, LS: PRED CRM- OFF WHT, PLTY-
 BLKY, PRED MOD FRM- FRM, OCC SUB RND- SUB ANG, MIC FN- FN XLN, HL FRAC
 POR, FR- GD BRI YEL-GLD FLOR, PR- FR MILKY YEL CUT, THN YEL RES RING

DOL: MSTLY OFF WHT- CRM, SME OFF WHT- V
 WHT- LT GRY, TR SUCRO, PLTY- BLKY, PRED
 HL FRAC POR, SUB RND, LS: PRED CRM- OFF
 FRM- FRM, OCC SUB RND- SUB ANG, MIC FN-
 BRI YEL-GLD FLOR, FR MILKY YEL CUT, FR Y

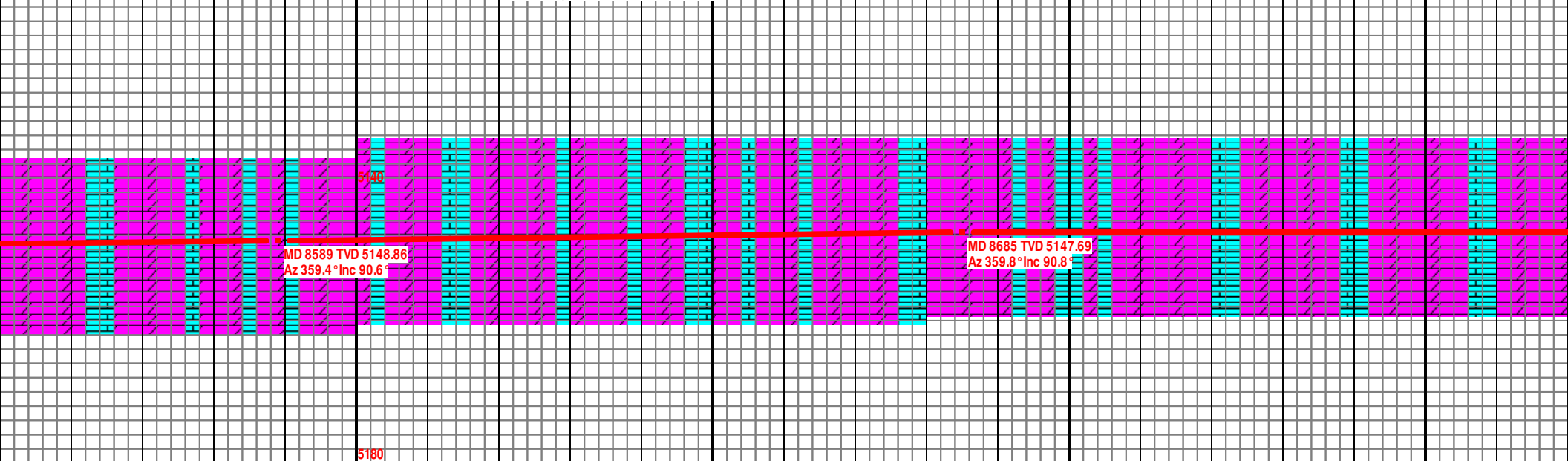




WHT, OCC TAN, TR MOTT OFF
 MOD FRM- FRM, FN- MIC FN XLN,
 WHT, PLTY- BLKY, PRED MOD
 FN XLN, HL FRAC POR, FR- GD
 EL/WH RES RNG

DOL: ABUN OFF WHT- CRM, SME OFF WHT- WHT, PLTY- BLKY, SUB RND-SUB
 ANG, PRED MOD FRM- FRM, V FN- MIC FN XLN, HL FRAC POR, LS: ABUN
 CRM- OFF WHT, PLTY- BLKY, PRED MOD FRM- FRM, OCC SUB RND- SUB
 ANG, MIC FN- FN XLN, HL FRAC POR, FR- GD BRI YEL-GLD FLOR, FR MILKY
 YEL CUT, FR YEL/WH RES RNG

DOL: ABUN OFF WHT- CRM, SME OFF WHT- WHT, PLTY- BLKY
 ANG, PRED MOD FRM- FRM, V FN- MIC FN XLN, HL FRAC POR
 CRM- OFF WHT, PLTY- BLKY, PRED MOD FRM- FRM, OCC SUB
 MIC FN- FN XLN, HL FRAC POR, FR- GD BRI YEL-GLD FLOR,
 CUT, FR YEL/WH RES RNG

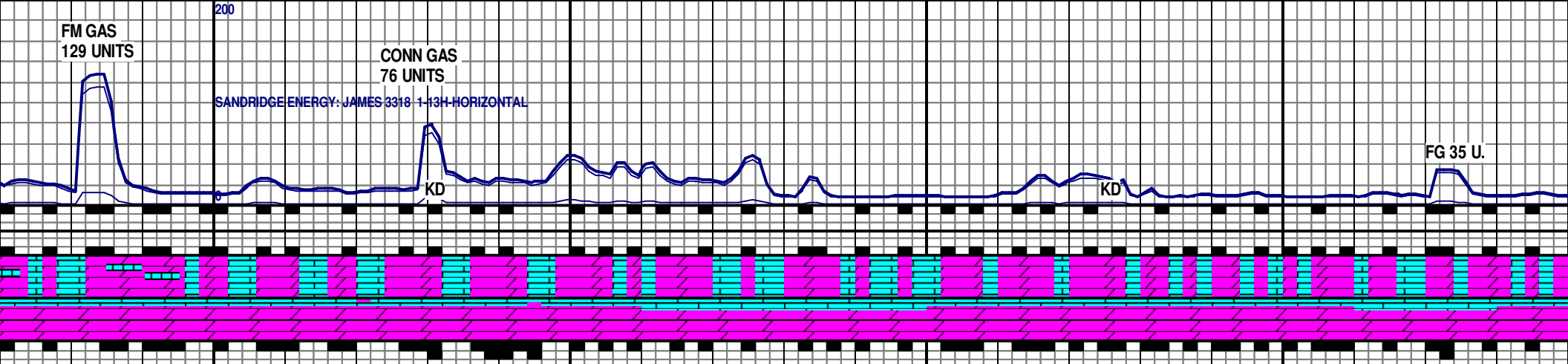


FM GAS
129 UNITS

CONN GAS
76 UNITS

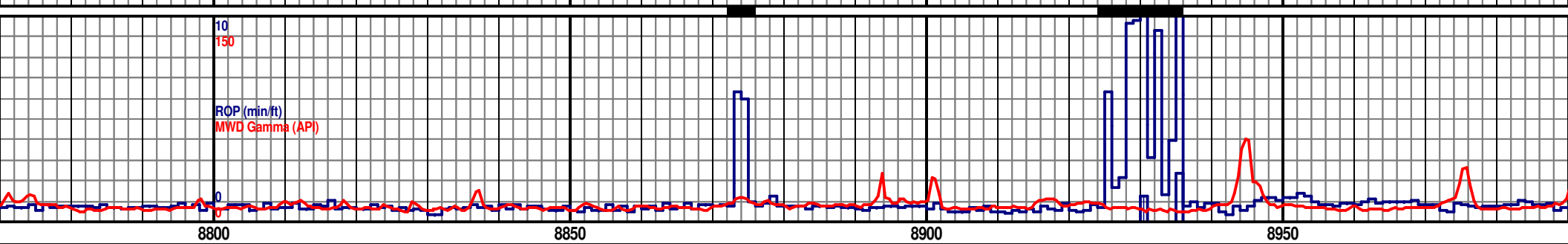
SANDRIDGE ENERGY: JAMES 3318-1-13H HORIZONTAL

FG 35 U.



10
150

ROP (min/ft)
MWD Gamma (API)



8800

8850

8900

8950

Y, SUB RND-SUB
R, LS: ABUN
B RND- SUB ANG,
FR MILKY YEL

5100 TVD

DOL: ABUN OFF WHT- CRM, SME OFF WHT- WHT, PLTY- BLKY, SUB RND-SUB
ANG, PRED MOD FRM- FRM, V FN- MIC FN XLN, HL FRAC POR, LS: ABUN CRM-
OFF WHT, PLTY- BLKY, PRED MOD FRM- FRM, OCC SUB RND- SUB ANG, MIC FN-
FN XLN, HL FRAC POR, FR- GD BRI YEL-GLD FLOR, FR MILKY YEL CUT, FR
YEL/WH RES RNG

DOL: ABUN OFF WHT- CRM, SME OFF WHT- WHT, PLTY- BLKY, SUB RND-SUB AN
MOD FRM- FRM, V FN- MIC FN XLN, HL FRAC POR, LS: ABUN CRM- OFF WHT, PL
BLKY, PRED MOD FRM- FRM, OCC SUB RND- SUB ANG, MIC FN- FN XLN, HL FRA
FR- GD BRI YEL-GLD FLOR, PR- FR MILKY YEL CUT, FR YEL RES RING

MD 8780 TVD 5147.6
Az 359.4° Inc 89.3°

MD 8876 TVD 5149.11
Az 359.6° Inc 88.9°

MD 8971 TVD 5151.1
Az 359.9° Inc 88.7°

MUD DATA

DEPTH: 8,987'

WT 8.4

VIS 28

PV 1

YP 1

GEL 1/1

FIL 60

CK N/A

SOL 1.0

H2O 99

PH 11.0

CL 14,000

HRD 80

5180

ADDING EVOLUBE
& ABO TO MUD

ADDING DIESEL
TO MUD

SANDRIDGE ENERGY: JAMES 3318-1-13H HORIZONTAL

SANDRIDGE

BG 10 U.

CG 11 U.
KD

FG 24 U.

BG 13 U.

CG 12 U.
KD

BG 12 U.

CG 11 U.
KD

WOB-18.5K
RPM-51
PSI 1760
SPM 71
ROP (min/ft)
MWD Gamma (API)

ROP (min/ft)
MWD Gamma (API)

9000

9050

9100

9150

9200

CG, PRED
TY-
C POR,

DOL: PRED OFF WHT- CRM, OCC OFF WHT- WHT, PLTY- BLKY, SUB RND-SUB ANG,
PRED MOD FRM- FRM, FN- MIC FN XLN, HL FRAC POR, FR-GD INTERXLN POR, LS:
PRED CRM- OFF WHT, PLTY- BLKY, PRED MOD FRM- FRM, OCC SUB RND- SUB ANG,
FN- MIC FN XLN, HL FRAC POR, FR- GD BRI YEL-GLD FLOR, PR- FR MILKY YEL CUT,
THN YEL RES RING

DOL: MSTLY WHT- OFF WHT, SME OFF WHT- CRM, TR SUCRO, PRED PLTY, SME
BLKY, OCC SUB RND-SUB ANG, MOD FRM- FRM, MIC FN- V FN XLN, FR-GD
INTERXLN POR, SCAT HL FRAC POR, LS: MSTLY OFF WHT- CRM, PRED PLTY,
SME BLKY, MOD FRM- FRM, SME SUB RND- SUB ANG, FN- MIC FN XLN, SCAT HL
FRAC POR, FR- GD BRI YEL-GLD FLOR, FR-GD MILKY YEL CUT, FR YEL/WH RES
RNG

5140

5140

MD 9067 TVD 5152.02
Az 359.5° Inc 90.2°

MD 9163 TVD 5152.27
Az 359.5° Inc 89.5°

5180

5180

ENERGY: JAMES 3318-1-13H HORIZONTAL

FM GAS 61 UNITS

CONN GAS
24 UNITS

FM GAS 54 UNITS

SANDRIDGE ENERGY: JAMES 3318-1-

CONN GAS
17 UNITS

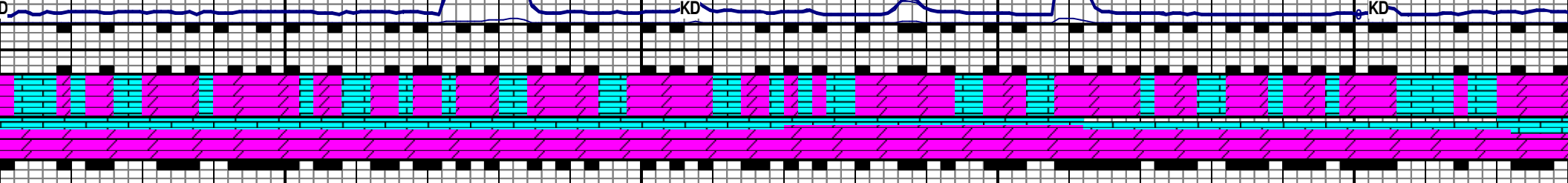
8 U.

BG GAS 12 UNITS

KD

KD

BG C

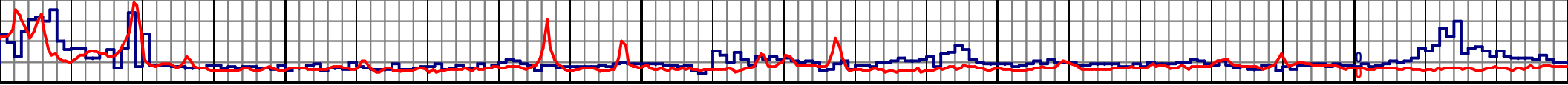


WOB-11.3K
RPM-48
PSI-2065
SPM-72

γ (API)

10
150

ROP (min/ft)
MWD Gamma (API)



9250

9300

9350

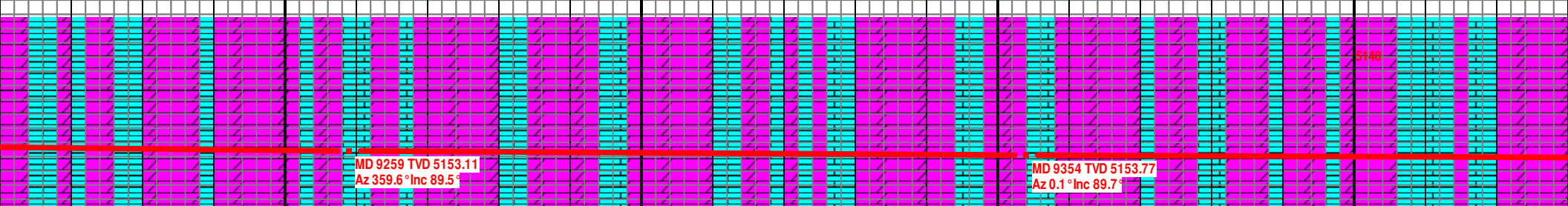
9400

5100 TVD

DOL: MSTLY WHT-OFF WHT, SME OFF WHT- CRM, TR SUCRO, PRED PLTY, SME BLKY, OCC SUB RND-SUB ANG, MOD FRM- FRM, MIC FN- V FN XLN, SCAT HL FRAC POR, FR-GD INTERXLN POR, LS: MSTLY OFF WHT- CRM, PRED PLTY, SME BLKY, MOD FRM- FRM, SME SUB RND- SUB ANG, FN- MIC FN XLN, SCAT HL FRAC POR, FR- GD BRI YEL-GLD FLOR, FR-GD MLKY YEL CUT, FR YEL/WH RES RNG

DOL: MSTLY WHT-OFF WHT, SME OFF WHT- CRM, TR SUCRO, PRED PLTY, SME BLKY, OCC SUB RND-SUB ANG, MOD FRM- FRM, MIC FN- V FN XLN, SCAT HL FRAC POR, FR-GD INTERXLN POR, LS: MSTLY OFF WHT- CRM, PRED PLTY, SME BLKY, MOD FRM- FRM, SME SUB RND- SUB ANG, FN- MIC FN XLN, SCAT HL FRAC POR, FR- GD BRI YEL-GLD FLOR, FR-GD MLKY YEL CUT, FR YEL/WH RES RNG

DOL: MSTLY WHT-OFF WHT, SME OFF WHT- CRM, TR SUCRO, PRED PLTY, SME BLKY, OCC SUB RND-SUB ANG, MOD FRM- FRM, MIC FN- V FN XLN, SCAT HL FRAC POR, FR-GD INTERXLN POR, LS: MSTLY OFF WHT- CRM, PRED PLTY, SME BLKY, MOD FRM- FRM, SME SUB RND- SUB ANG, FN- MIC FN XLN, SCAT HL FRAC POR, FR- GD BRI YEL-GLD FLOR, FR-GD MLKY YEL CUT, FR YEL/WH RES RNG



MD 9259 TVD 5153.11
Az 359.6° Inc 89.5°

MD 9354 TVD 5153.77
Az 0.1° Inc 89.7°

5140

5180

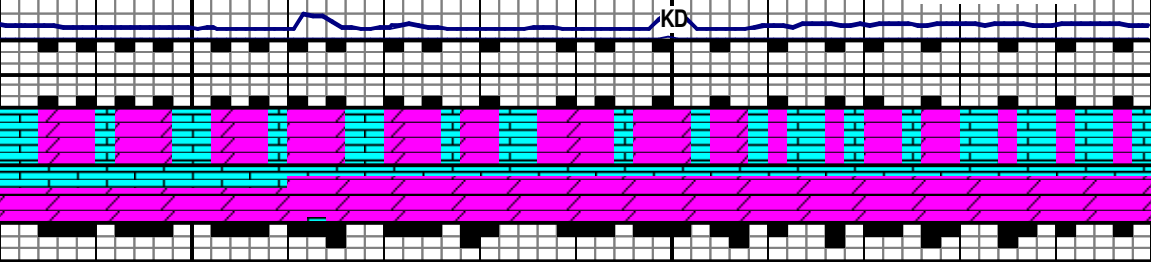
13H HORIZONTAL

GAS 10 UNITS

CONN GAS
21 UNITS

BG GAS 13 UNITS

GAS



WOB-16.8K
RPM-51
PSI-1860
SPM-70

TD WELL @ 9,550' MD
AND 5,156' TVD ON
8/28/2012

ROP

9450

9500

9550

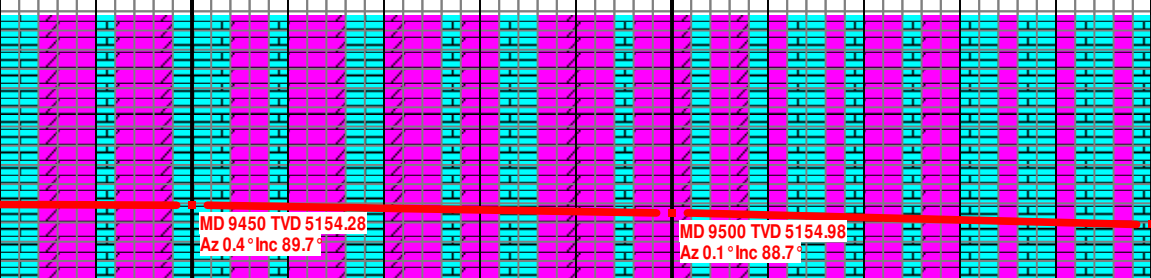
96

F WHT, SME OFF WHT- CRM, TR SUCRO, PRED
SUB RND-SUB ANG, MOD FRM- FRM, MIC FN- V
C POR, FR-GD INTERXLN POR, LS: MSTLY OFF
Y, SME BLKY, MOD FRM- FRM, SME SUB RND-
XLN, SCAT HL FRAC POR, FR- GD BRI YEL-GLD
EL CUT, FR YEL/WH RES RNG

DOL: MSTLY WHT- OFF WHT, SME OFF WHT- CRM, TR SUCRO,
PRED PLTY, SME BLKY, OCC SUB RND-SUB ANG, MOD FRM- FRM,
MIC FN- V FN XLN, SCAT HL FRAC POR, FR-GD INTERXLN POR,
LS: MSTLY OFF WHT- CRM, PRED PLTY, SME BLKY, MOD FRM-
FRM, SME SUB RND- SUB ANG, FN- MIC FN XLN, SCAT HL FRAC
POR, FR- GD BRI YEL-GLD FLOR, FR-GD MLKY YEL CUT, FR
YEL/WH RES RNG

SANDRIDGE ENERGY INC.
JAMES 3318 1-13H
SEC 13-33S 18W
COMANCHE CO. KANSAS
API# 15033216620000

GR 1,890' KB 1,910'



MD 9450 TVD 5154.28
Az 0.4° Inc 89.7°

MD 9500 TVD 5154.98
Az 0.1° Inc 88.7°

MD 9550 TVD 5156.11
Az 0.1° Inc 88.7°