

**MIDWEST SURVEYS**  
 LOGGING - PERFORATING - CONSULTING SERVICES  
 P.O. Box 68, Osawatomie, KS 66064  
 913 / 735 - 2128

**GAMMA RAY / NEUTRON / CCL**

File No. Company **Bobcat Oilfield Services, Inc.**

Well **Light No. H-1**

Field **LaCyge - Cadmus**

County **Linn** State **Kansas**

Location **3960' FSL & 2660' FEL**

Sec. **8** Twp. **20S** Rge. **23E**

Permanent Datum **GL** Elevation **NA**

Log Measured From **GL**

Drilling Measured From **GL**

Other Services  
Perforate

Elevation  
K.B. NA  
D.F. NA  
G.L. NA

API # 15-107-24,713

Date 03-27-2013

Run Number One

Depth Driller 335.0

Depth Logger 329.0

Bottom Logged Interval 328.0

Top Log Interval 20.0

Fluid Level Full

Type Fluid Water

Density / Viscosity NA

Salinity - PPM Cl NA

Max Recorded Temp NA

Estimated Cement Top 0.0

Equipment No. 102 Location Osawatomie

Recorded By Gary Windisch

Witnessed By Bob Eberhart

BORE-HOLE RECORD				CASING RECORD			
Run	BIT	FROM	TO	SIZE	WGT.	FROM	TO
One	8.75"	0.0	20.0	6.50"	15.0 #	0.0	20.0
Two	5.825"	20.0	335.0	2.875"	6.5 #	0.0	330.0

<<< Fold Here >>>

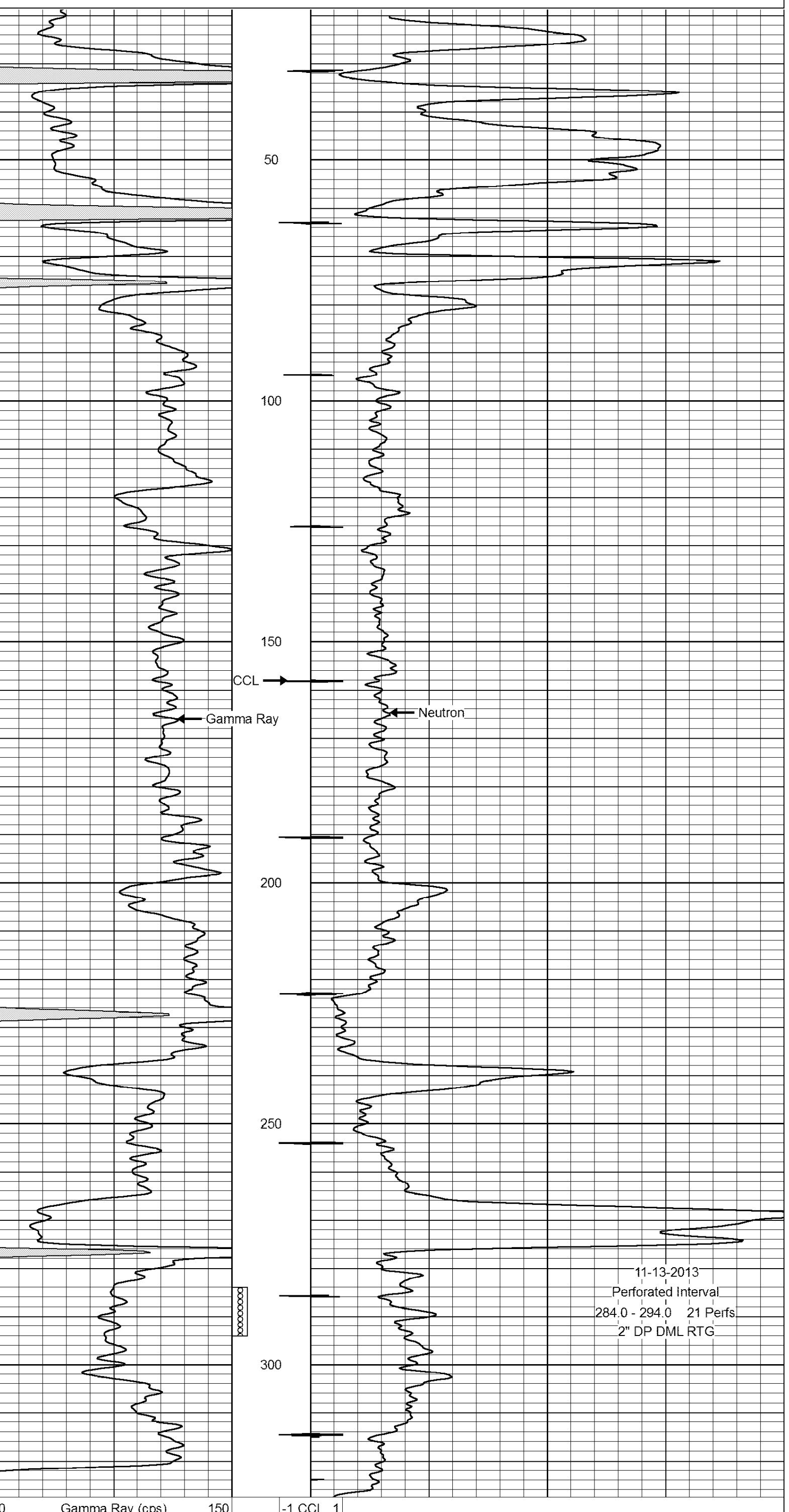
All interpretations are opinions based on inferences from electrical or other measurements and we cannot and do not guarantee the accuracy or correctness of any interpretation, and we shall not, except in the case of gross or willful negligence on our part, be liable or responsible for any loss, costs, damages, or expenses incurred or sustained by anyone resulting from any interpretation made by any of our officers, agents or employees. These interpretations are also subject to our general terms and conditions set out in our current Price Schedule.

Comments

Drilling Contractor :  
Dale Jackson Production Company

Database File: light1h.db  
 Dataset Pathname: pass1  
 Presentation Format: gr-n-ccl  
 Dataset Creation: Tue Aug 27 14:23:47 2013 by Log SCH 111116  
 Charted by: Depth in Feet scaled 1:240

0	Gamma Ray (cps)	150	-1 CCL 1	100	Neutron (cps)	1900
150	Gamma Ray (cps)	300				



11-13-2013  
 Perforated Interval  
 284.0 - 294.0 21 Perfs  
 2" DP DML RTG

0	Gamma Ray (cps)	150	-1 CCL 1	100	Neutron (cps)	1900
150	Gamma Ray (cps)	300				