



MIDWEST SURVEYS
 LOGGING - PERFORATING - CONSULTING SERVICES
 P.O. Box 68, Osawatomie, KS 66064
 913 / 755 - 2128

GAMMA RAY / NEUTRON / CCL

API # 15-107-24,677

File No.

Company **Bobcat Oilfield Services, Inc.**

Well **Light No. D-1**

Field **LaCygne - Cadmas**

County **Linn** State **Kansas**

Location **4620' FSL & 2660' FEL
NE-SE-NE-NW**

Sec. **8** Twp. **20S** Rge. **23E**

Permanent Datum **GL** Elevation **NA**

Log Measured From **GL**

Drilling Measured From **GL**

Date **05-07-2013**

Run Number **One**

Depth Driller **320.0**

Depth Logger **315.0**

Bottom Logged Interval **314.0**

Top Log Interval **20.0**

Fluid Level **Full**

Type Fluid **Water**

Density / Viscosity **NA**

Salinity - PPM Cl **NA**

Max. Recorded Temp **NA**

Estimated Cement Top **0.0**

Equipment No. **107** Location **Osawatomie**

Recorded By **Steve Wandsch**

Witnessed By **Bob Eberhart**

Other Services
Perforate

BORE-HOLE RECORD				CASING RECORD			
Run No.	BIT	FROM	TO	SIZE	WGT.	FROM	TO
One	8.75"	0.0	20.0	6.25"	15.0 #	0.0	20.0
Two	5.625"	20.0	320.0	2.875"	6.5 #	0.0	315.0

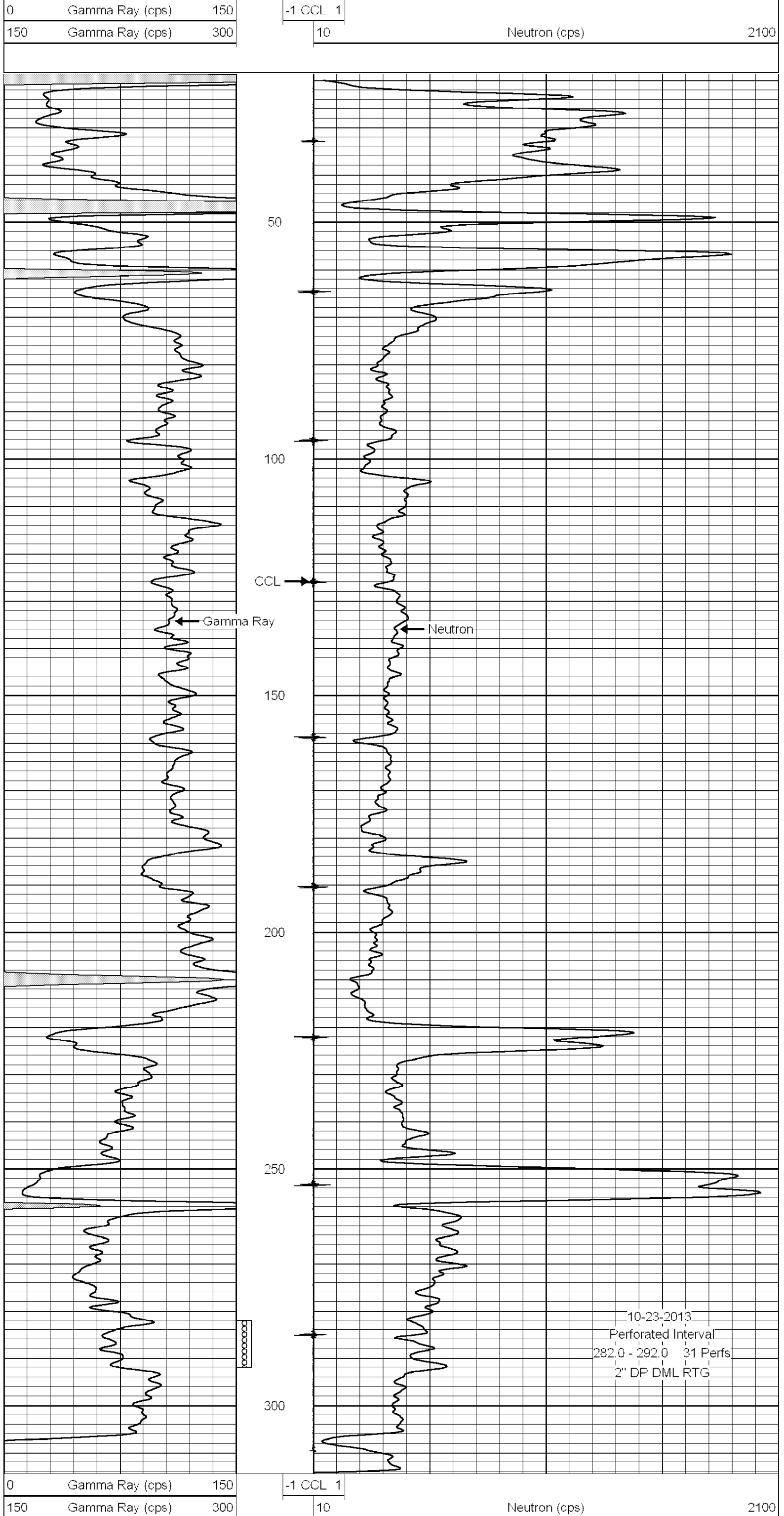
<<< Fold Here >>>

All interpretations are opinions based on inferences from electrical or other measurements and we cannot and do not guarantee the accuracy or correctness of any interpretation, and we shall not, except in the case of gross or willful negligence on our part, be liable or responsible for any loss, costs, damages, or expenses incurred or sustained by anyone resulting from any interpretation made by any of our officers, agents or employees. These interpretations are also subject to our general terms and conditions set out in our current Price Schedule.

Comments

Drilling Contractor :
Dale Jackson Production Company

Database File: light1d.db
 Dataset Pathname: pass1
 Presentation Format: gr-n-ccl
 Dataset Creation: Fri Jun 07 13:10:55 2013 by Log SCH 111116
 Charted by: Depth in Feet scaled 1:240



10-23-2013
 Perforated Interval
 282.0 - 292.0 31 Perfs
 2" DP DML RTG

BORE-HOLE RECORD				CASING RECORD			
Run No.	BIT	FROM	TO	SIZE	WGT.	FROM	TO
One	8.75"	0.0	20.0	6.25"	15.0 #	0.0	20.0
Two	5.625"	20.0	320.0	2.875"	6.5 #	0.0	315.0