

PIONEER



Pioneer Energy Services

Sonic Cement Bond Log

15-135-25535-00-00

API No.

Company L.D. Drilling, Inc.

Well Linn No. 1-9

Field Wildcat

County Ness State Kansas

Location 450' FSL & 2030' FWL

Other Services

Sec: 9 Twp: 20 S Rge: 21 W

Elevation

Permanent Datum Ground Level Elevation 2266

Log Measured From Kely Bushing 5 Ft. Above Perm. Datum

K.B. 2271
D.F.
G.L. 2266

Run Number

Date Survey 03/19/2013

Date Cementing 02/17/2013

Type Cementing Operation Primary

Depth Driller 4562

Depth Logger 4546

Logged Interval 4545 to 3450

Casing Driller 5.5 @ TD @

Float Collar -- D.V. Tool

Squeeze Depth

Amount & Type Cement

Amount & Type Admix

Type Fluid In Hole Water

Fluid Level Full

Salinity PPM CL

Weight lb/gal -- Vis. // // // //

Approx. Logged Cement Top 3666

Calculated Cement Top // // // //

Max. Hole Temperature 121

Tool No. RBT 3-6

Spacing Recorded 3'-5"

Equipment -- Location 18 D. Hagan Hays

Recorded By D. Hagan

Witnessed By Darwin Stefkes

<<< Fold Here >>>

All interpretations are opinions based on inferences from electrical or other measurements and we cannot and do not guarantee the accuracy or correctness of any interpretation, and we shall not, except in the case of gross or willful negligence on our part, be liable or responsible for any loss, costs, damages, or expenses incurred or sustained by anyone resulting from any interpretation made by any of our officers, agents or employees. These interpretations are also subject to our general terms and conditions set out in our current Price Schedule.

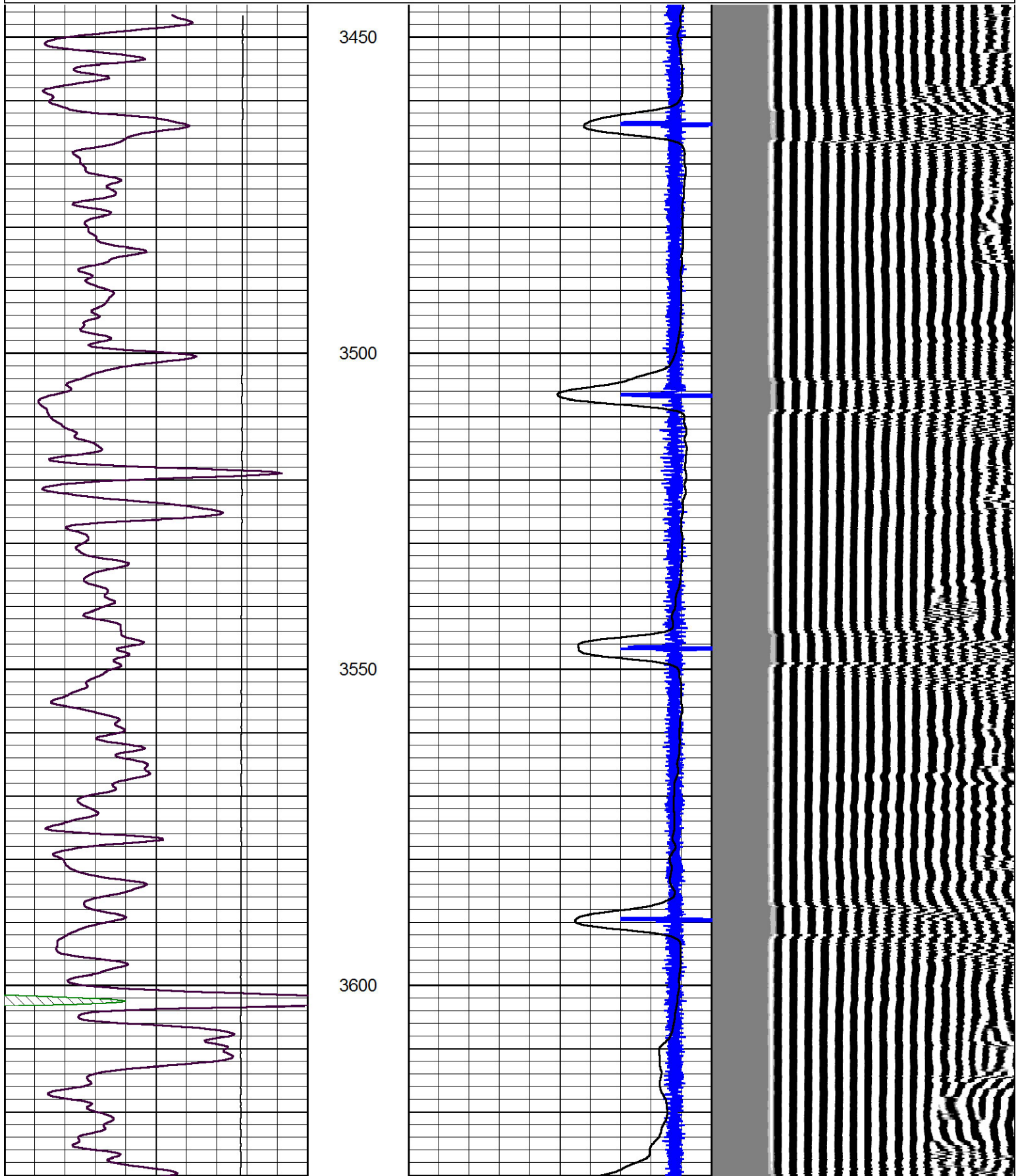
Comments

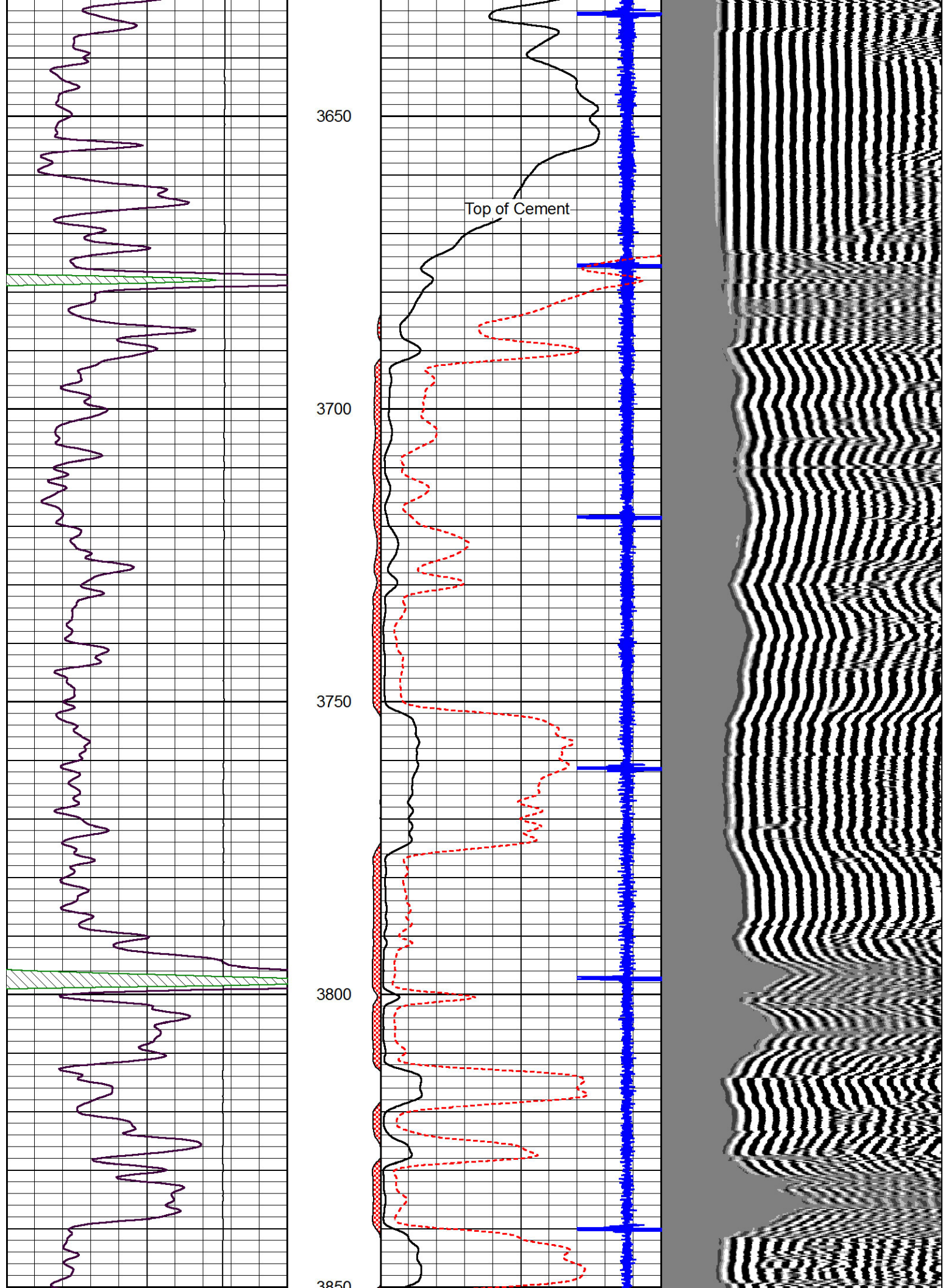
Thank you for using Pioneer Energy Services
785.625.3858

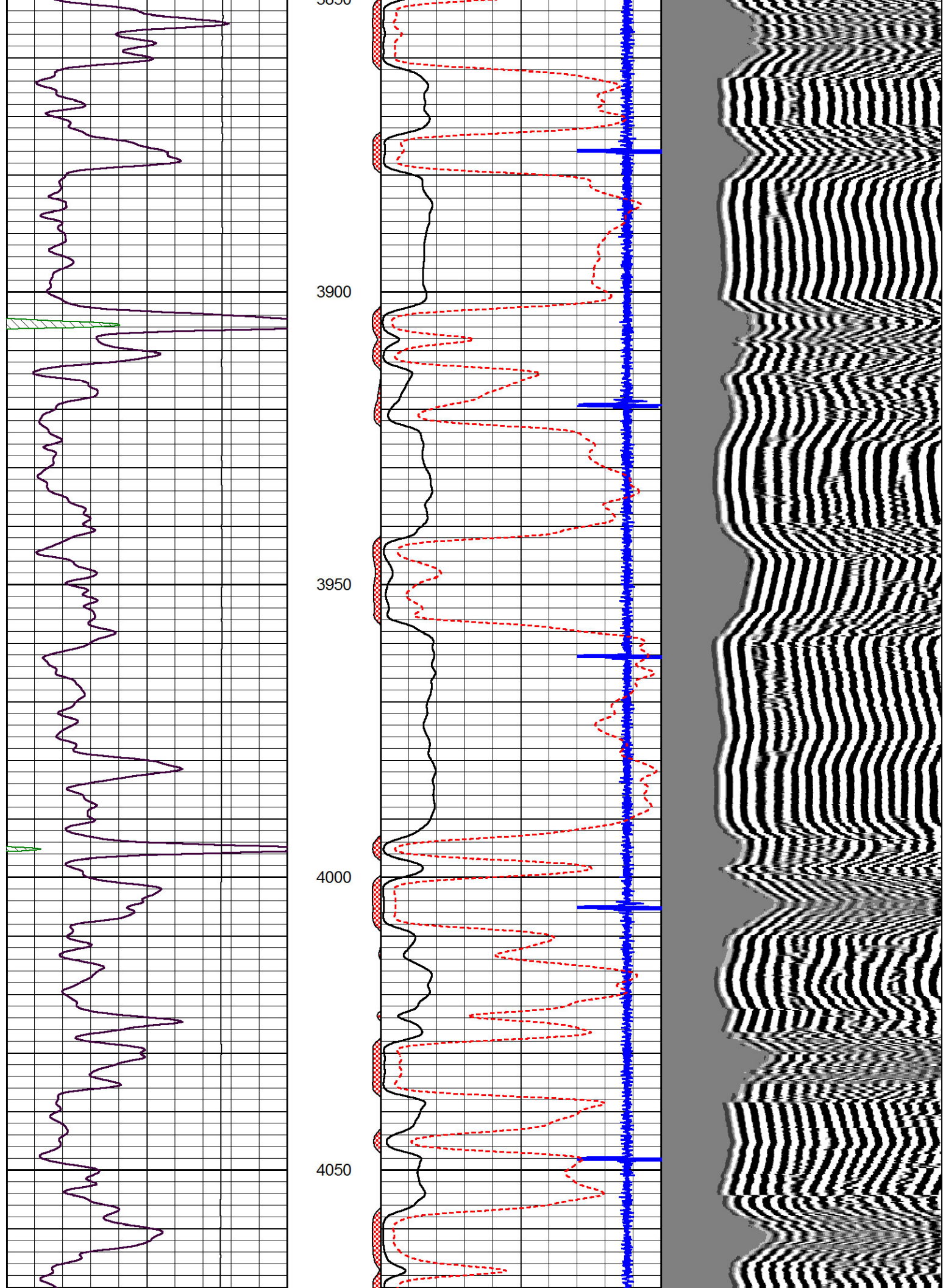
Bazine, Ks. 2 East to G Rd,
9 South, 1/2 West North into

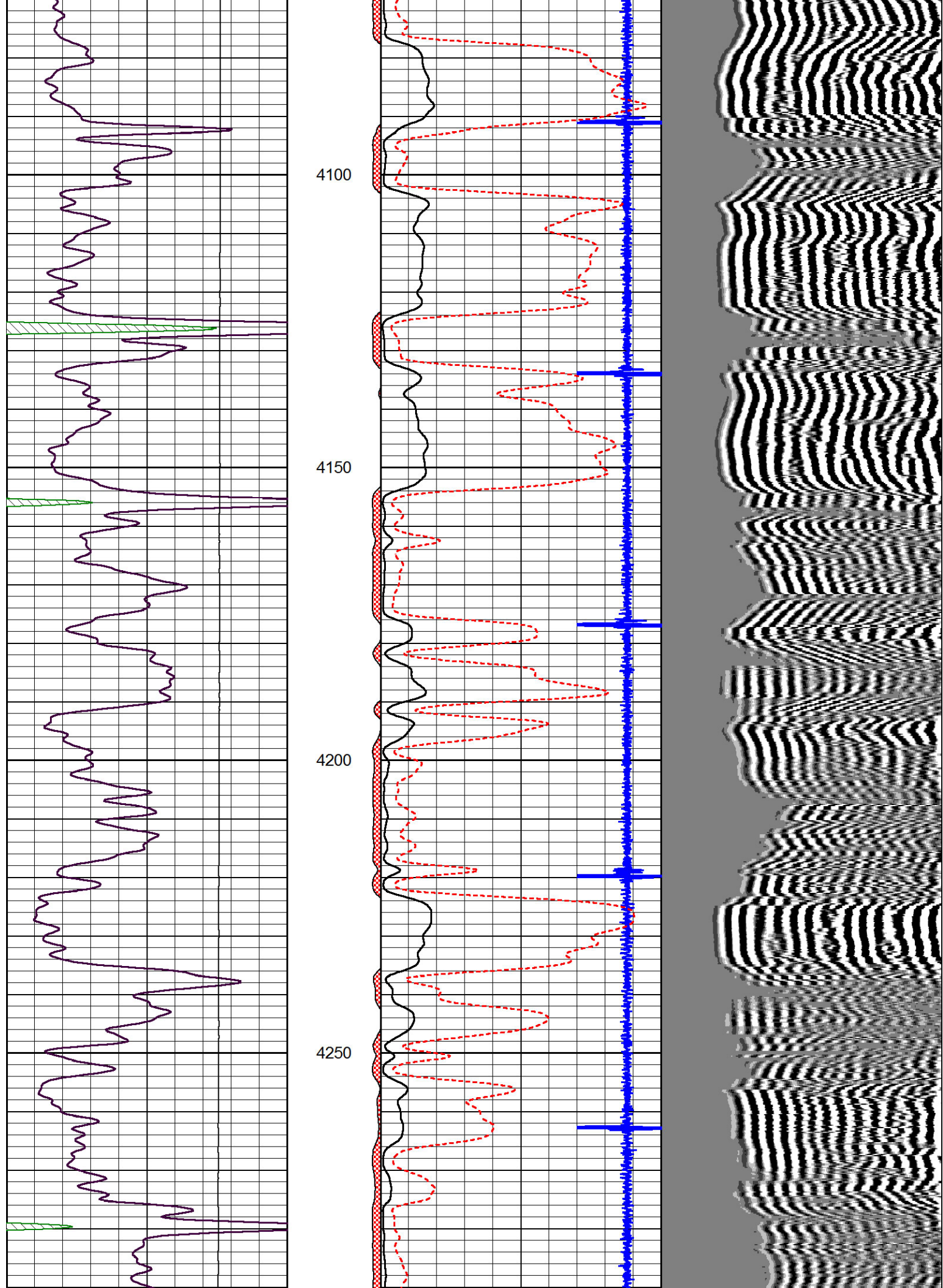
Database File: ldrillinginc_linn_1-9.db
 Dataset Pathname: grcbl/pass4
 Presentation Format: cbldr
 Dataset Creation: Tue Mar 19 11:17:55 2013 by Log 7.0 B1
 Charted by: Depth in Feet scaled 1:240

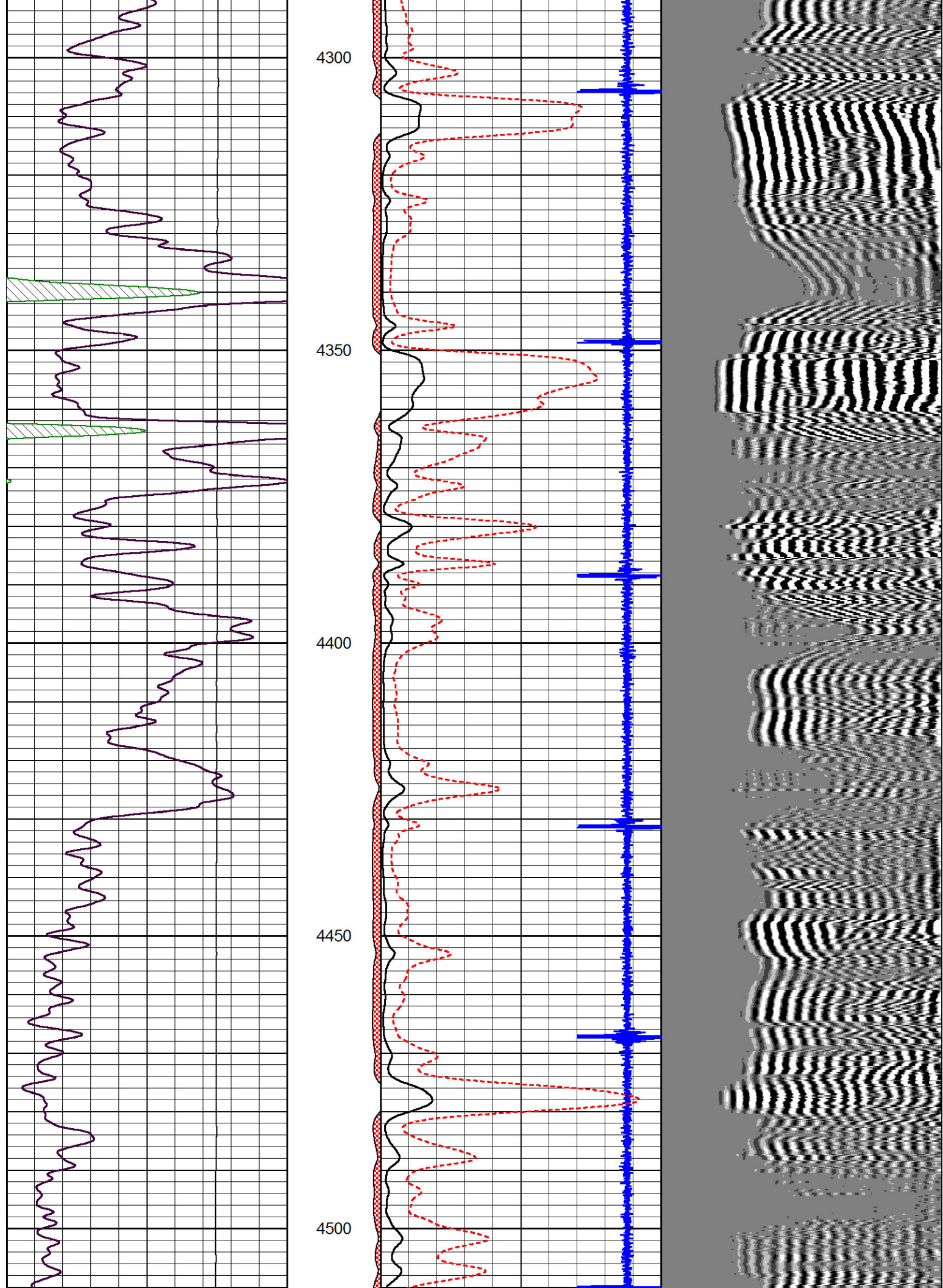
0	Gamma Ray	150	amp3ft	5	Casing Collars	-0.7	200	wvf5ft	1200
			(mV)	0	Pipe Amplitude (mV)	100			
			-100	10	Amplified Amplitude (mV)	20			

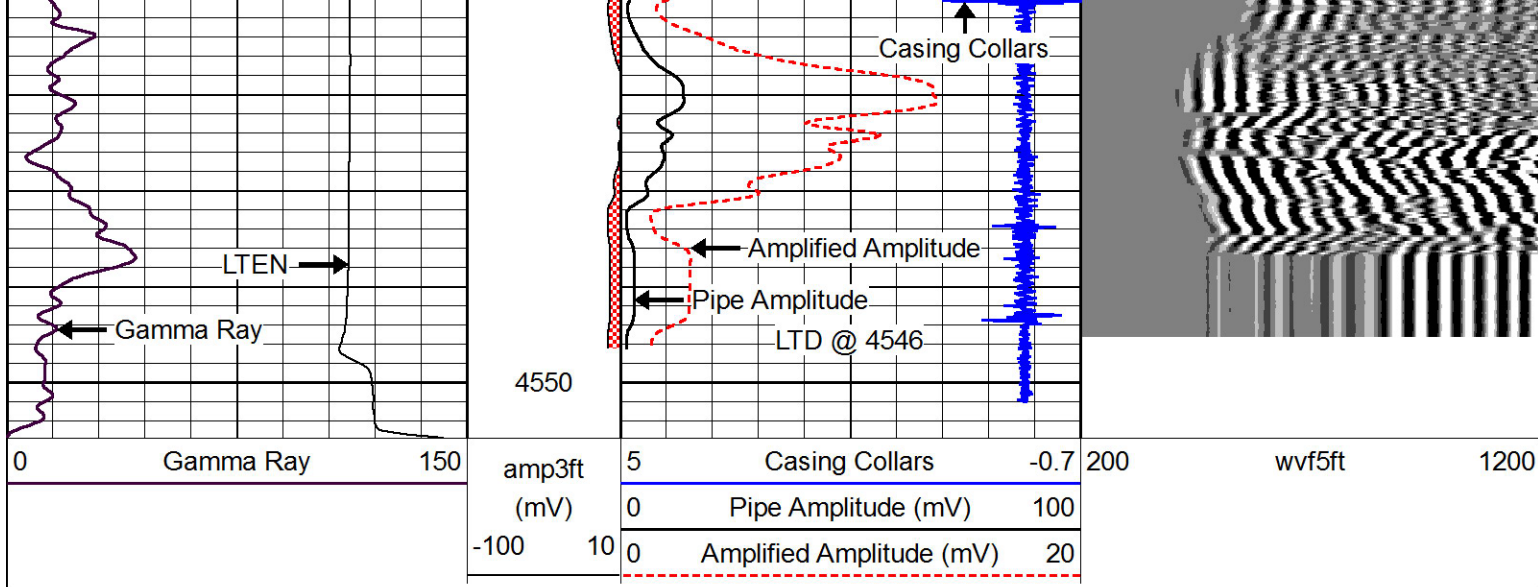












Repeat Section

Database File: ldrillinginc_linn_1-9.db
 Dataset Pathname: grcbl/pass3
 Presentation Format: cbldr
 Dataset Creation: Tue Mar 19 11:10:08 2013 by Log 7.0 B1
 Charted by: Depth in Feet scaled 1:240

