



**MIDWEST SURVEYS**  
 LOGGING - PERFORATING - CONSULTING SERVICES  
 P.O. Box 68, Osawatomie, KS 66064  
 913 / 755 - 2128

**GAMMA RAY / NEUTRON / CCL**

File No.

Company **JTC Oil, Inc**

Well **Renner No. P-4**

Field **Paola - Rantoul**

County **Miami** State **Kansas**

Location **756 FSL & 1590 FEL**

**SE-NE-SW-SE**

Other Services  
**Perforate**

Sec. 16 Twp. 17S Rge. 22E  
 Permanent Datum GL Elevation NA  
 Log Measured From GL  
 Drilling Measured From GL

Date **05-24-2013**

Run Number **One**

Depth Driller **640.0**

Depth Logger **616.5**

Bottom Logged Interval **615.5**

Top Log Interval **20.0**

Fluid Level **Full**

Type Fluid **Water**  
 Density / Viscosity **NA**  
 Salinity - PPM Cl **NA**  
 Max Recorded Temp **NA**  
 Estimated Cement Top **0.0**  
 Equipment No. **107** Location **Osawatomie**  
 Recorded By **Steve Windisch**

Witnessed By **Tom Cain**

BORE-HOLE RECORD		CASING RECORD	
No.	BIT FROM TO	SIZE	WGT. FROM TO
One	9.875' 0.0	22.0	7.00" 17.0# 0.0
Two	5.75' 22.0	640.0	2.875" 6.5# 0.0

<<< Fold Here >>>

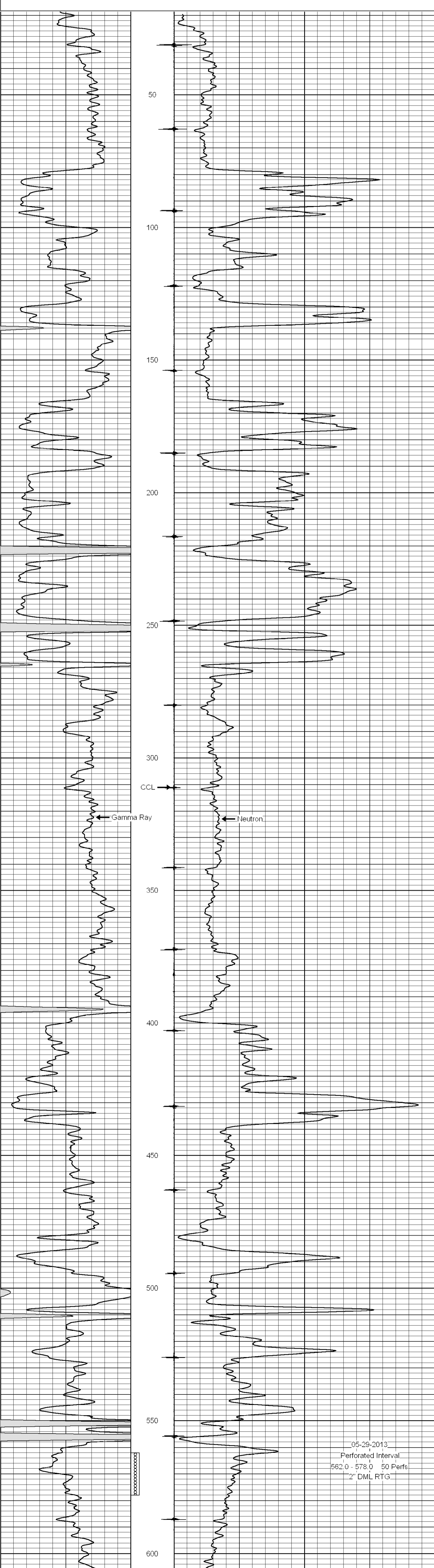
All interpretations are opinions based on inferences from electrical or other measurements and we cannot and do not guarantee the accuracy or correctness of any interpretation, and we shall not, except in the case of gross or willful negligence on our part, be liable or responsible for any loss, costs, damages, or expenses incurred or sustained by anyone resulting from any interpretation made by any of our officers, agents or employees. These interpretations are also subject to our general terms and conditions set out in our current Price Schedule.

**Comments**

Drilling Contractor :  
**JTC Oil, Inc**

Database File: renner4p.db  
 Dataset Pathname: pass1  
 Presentation Format: gr-n-ccl  
 Dataset Creation: Fri May 24 15:48:32 2013 by Log SCH 111116  
 Charted by: Depth in Feet scaled 1:240

0	Gamma Ray (cps)	150	-1 CCL 1	10	Neutron (cps)	2100
150	Gamma Ray (cps)	300				



05-29-2013  
 Perforated Interval  
 562.0 - 578.0 50 Perfs.  
 2" DML RTG

0	Gamma Ray (cps)	150	-1 CCL 1	10	Neutron (cps)	2100
150	Gamma Ray (cps)	300				