



SUPERIOR
Hays,
Kansas

**RADIATION
GUARD LOG**

Company OIL COMPANY OF AMERICA
Well HERL A#7 SWD
Field
County ELLIS State KANSAS

Company OIL COMPANY OF AMERICA
Well HERL A#7 SWD
Field
County ELLIS
State KANSAS

Location: API #: 15-051-26299-0000
W/2 - SE - NW - SE
SEC 28 TWP 14S RGE 17W
Permanent Datum GROUND LEVEL Elevation 1952
Log Measured From KELLY BUSHING 7' A.G.L.
Drilling Measured From KELLY BUSHING
Other Services
Elevation
K.B. 1959
D.F.
G.L. 1952

Date	5-22-12
Run Number	ONE
Depth Driller	3881
Depth Logger	3850
Bottom Logged Interval	3849
Top Log Interval	00
Casing Driller	1119
Casing Logger	1117
Bit Size	7.875
Type Fluid in Hole	CHEMICAL MUD
Density / Viscosity	9.5 / 52
pH / Fluid Loss	10.0 / 9.6
Source of Sample	FLOWLINE
Rim @ Meas. Temp	0.60 @ 75F
Rmf @ Meas. Temp	0.45 @ 75F
Rmc @ Meas. Temp	0.72 @ 75F
Source of Rmf / Rmc	MEASURED
Rim @ BHT	.390 @ 114F
Time Circulation Stopped	2 HOURS
Time Logger on Bottom	9:15 A.M
Maximum Recorded Temperature	114F
Equipment Number	860
Location	HAYS, KS.
Recorded By	DAN GOTTSCHALK
Witnessed By	ROGER MOSES
	DARRELL HERL

<<< Fold Here >>>

All interpretations are opinions based on inferences from electrical or other measurements and we cannot and do not guarantee the accuracy or correctness of any interpretation, and we shall not, except in the case of gross or willful negligence on our part, be liable or responsible for any loss, costs, damages, or expenses incurred or sustained by anyone resulting from any interpretation made by any of our officers, agents or employees. These interpretations are also subject to our general terms and conditions set out in our current Price Schedule.

Comments

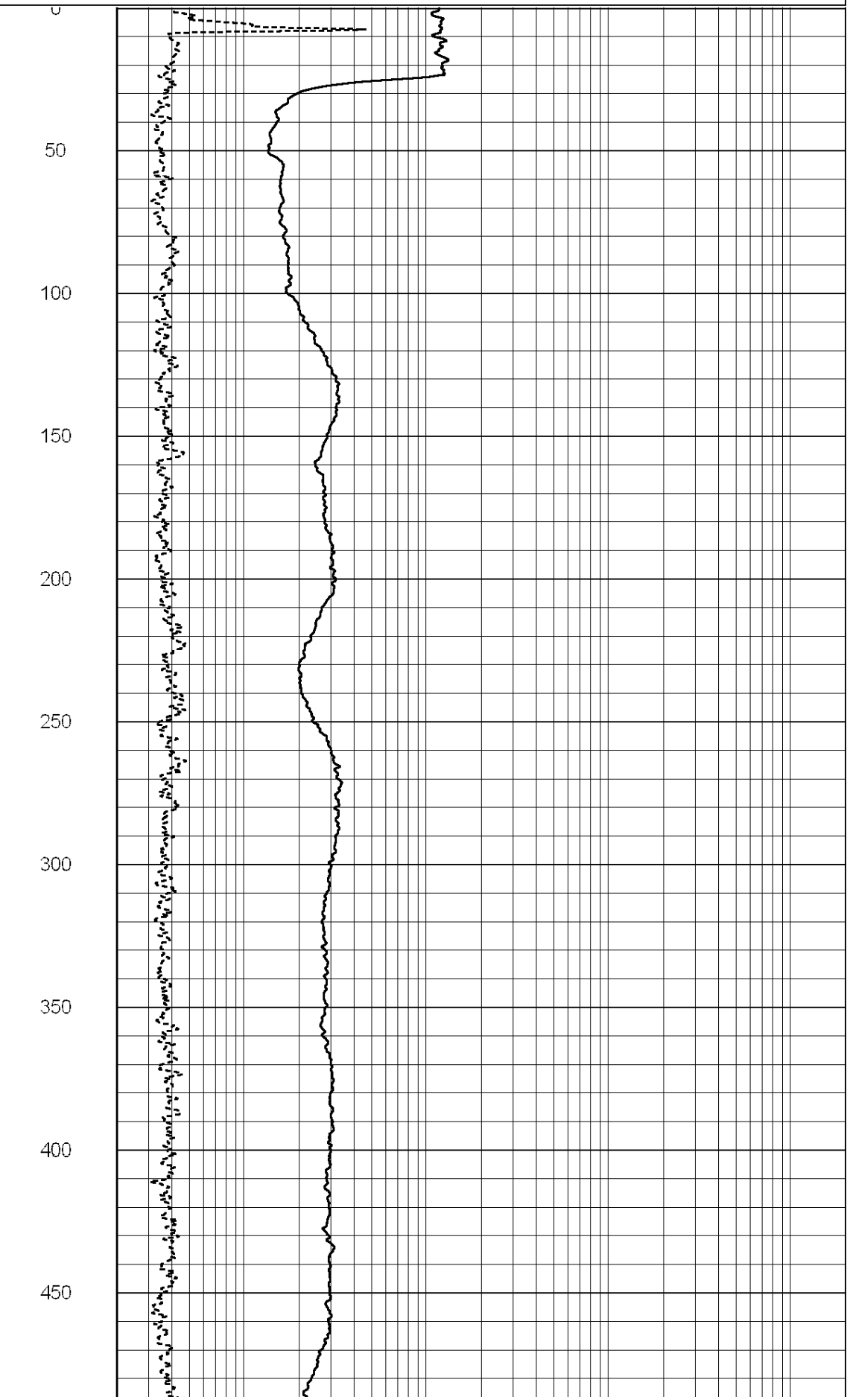
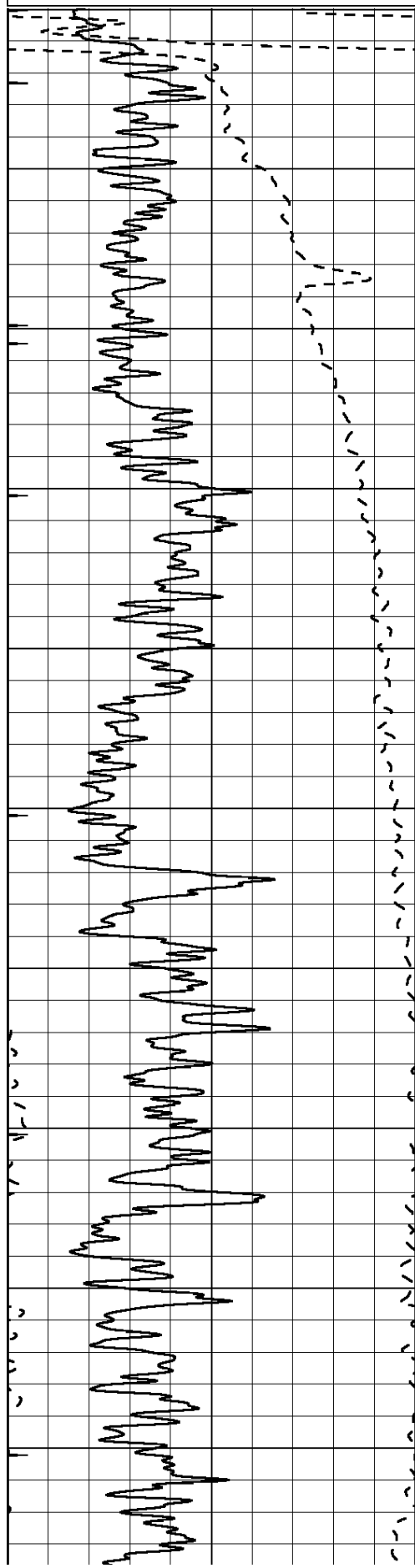
THANKS FOR USING SUPERIOR WELL SERVICES
HAYS, KS. 785-628-6395

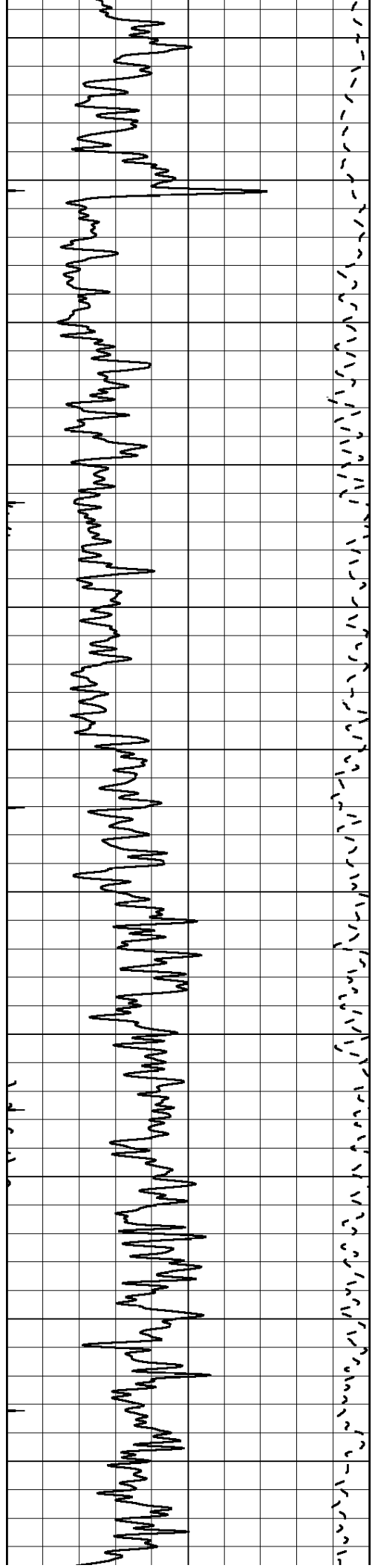
DIRECTIONS: MUNJOR - 3 EAST - SOUTH INTO

0	GAMMA RAY (GAPI)	150
-100	SP (mV)	100

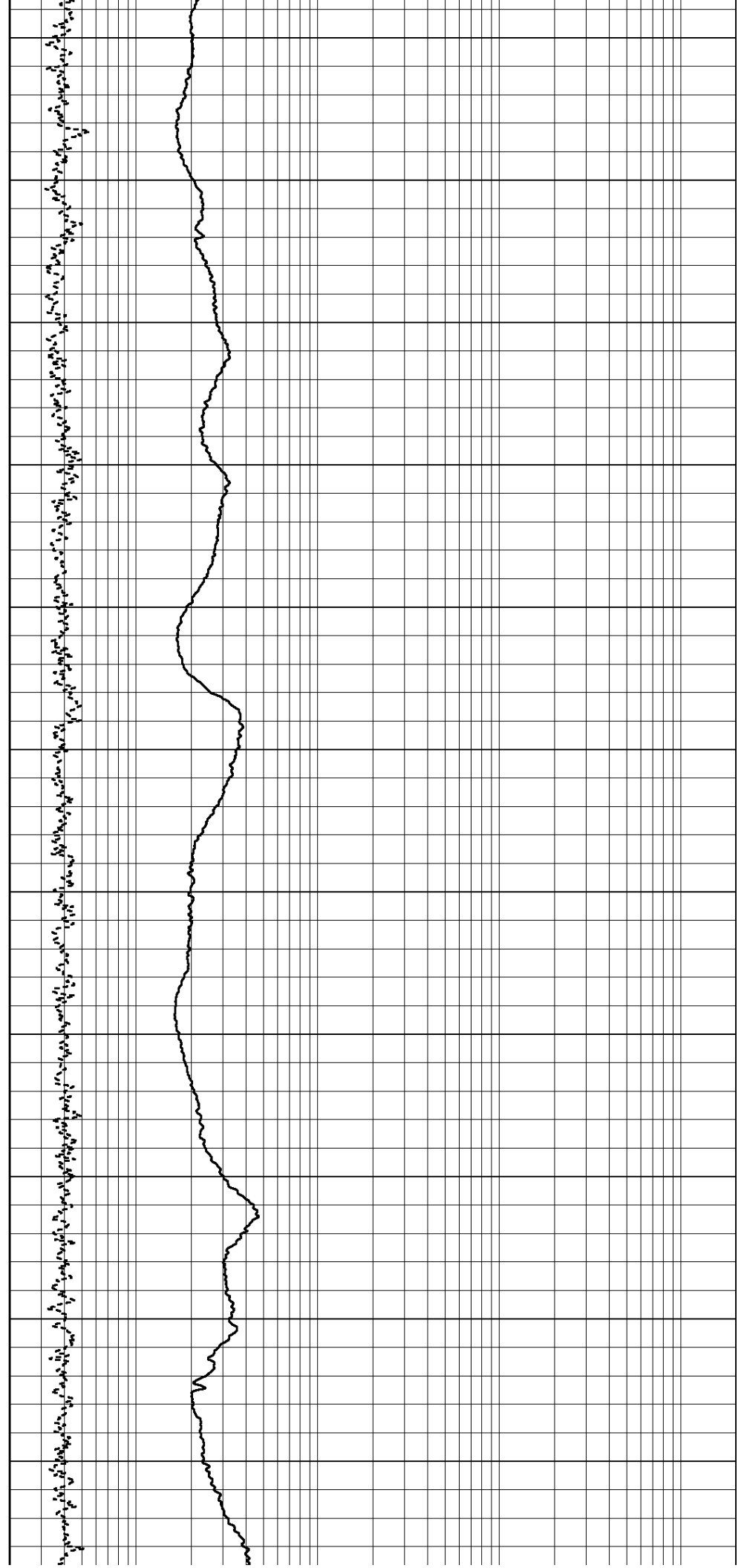
ABHV (ft3)
TBHV (ft3)

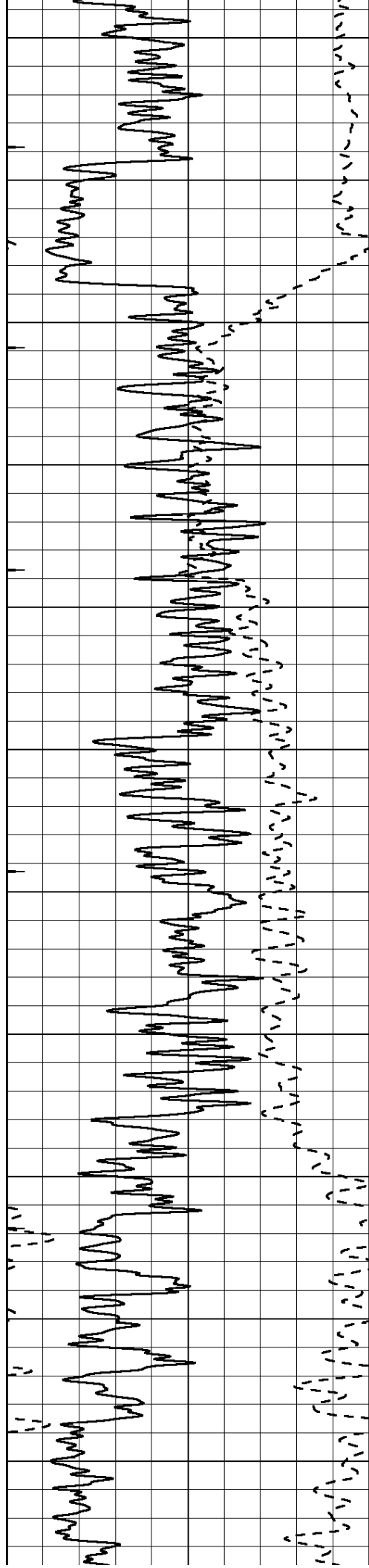
	GUARD (Ohm-m)	
0	NEUTRON (NAPI)	1000





500
550
600
650
700
750
800
850
900
950
1000





1050

1100

1150

1200

1250

1300

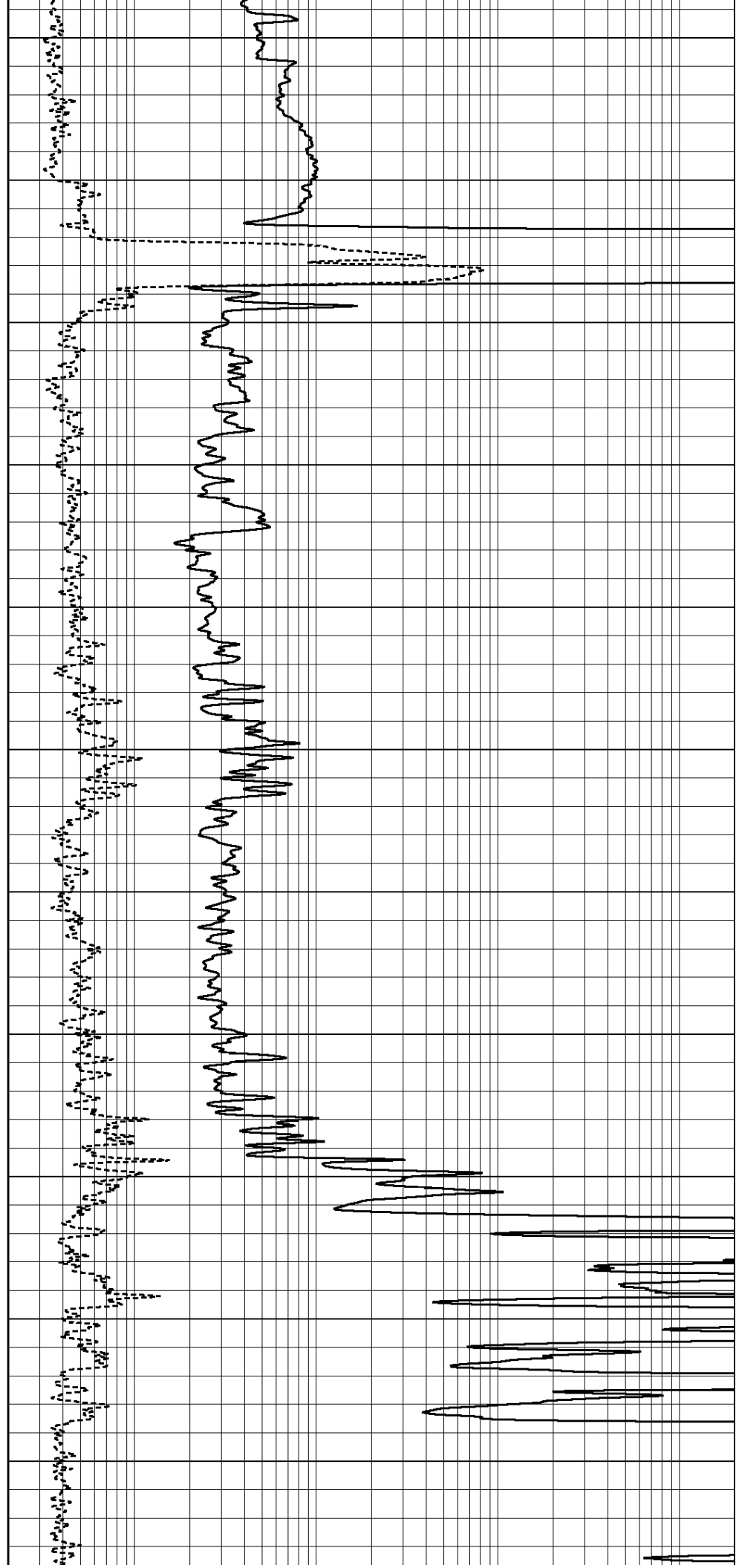
1350

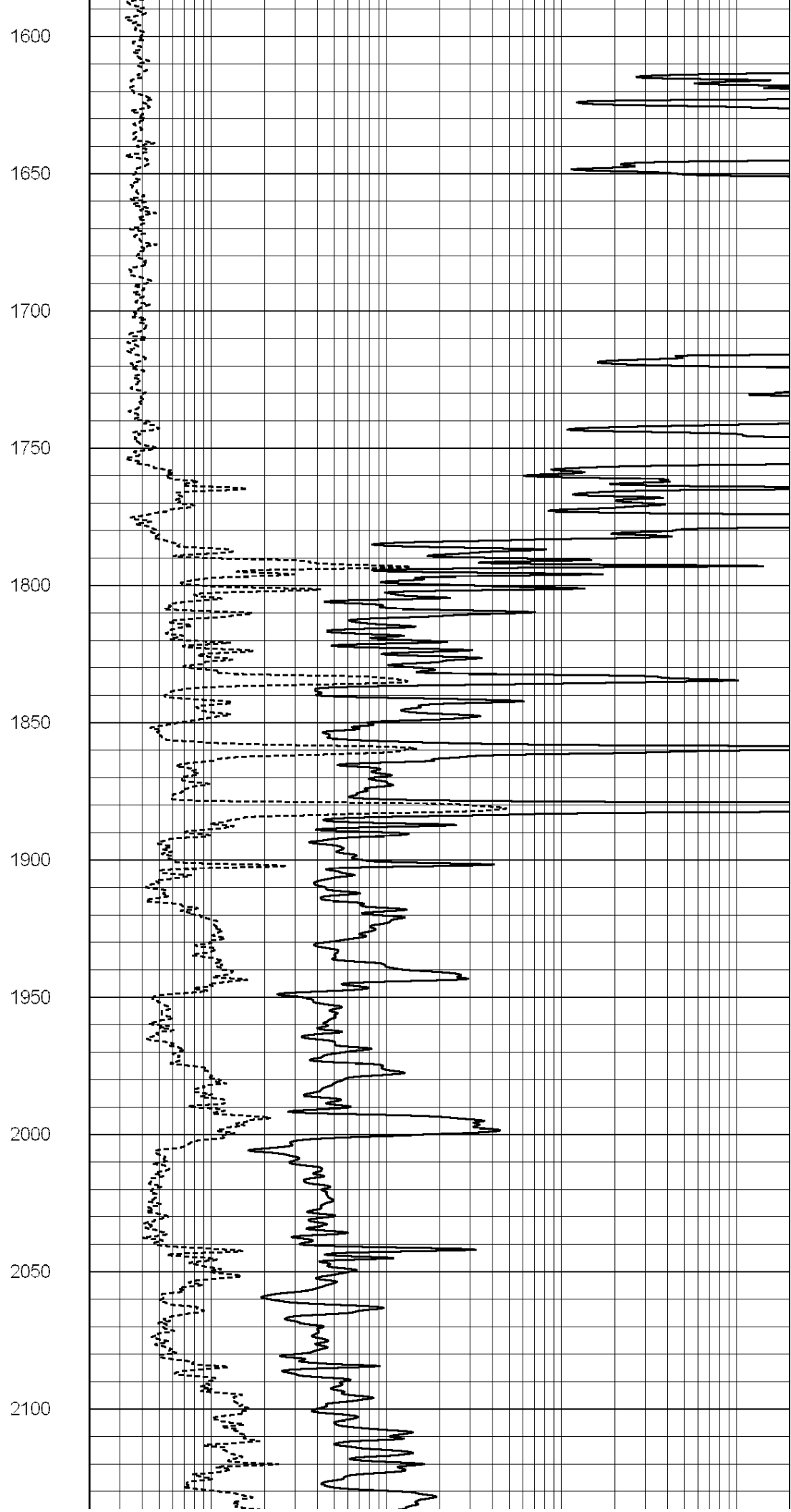
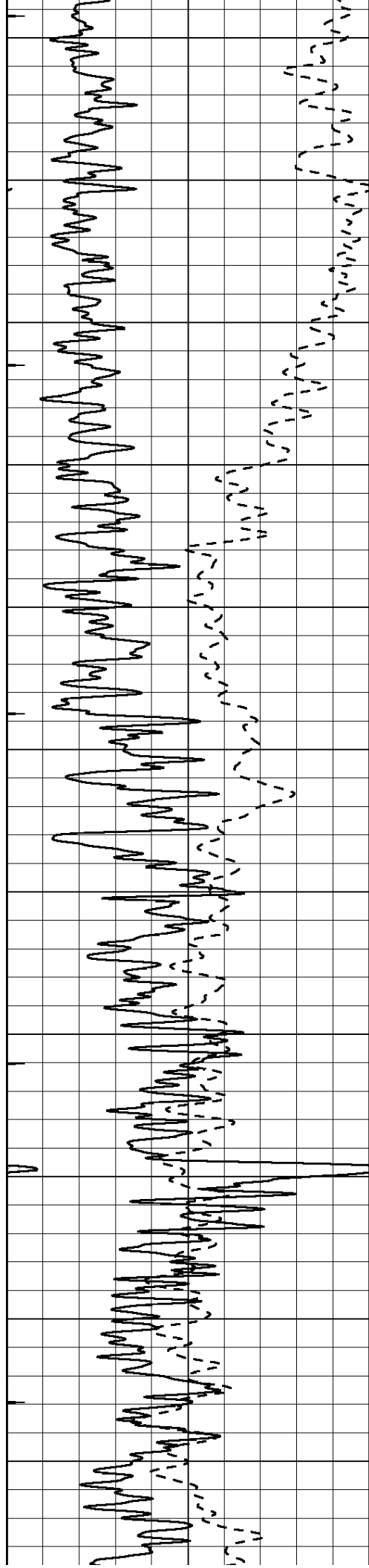
1400

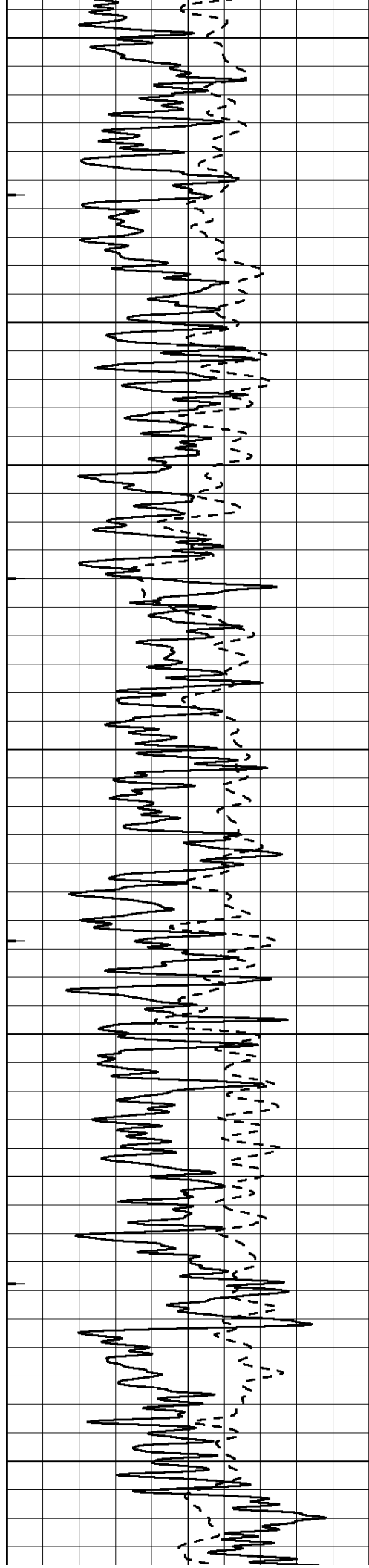
1450

1500

1550







2150

2200

2250

2300

2350

2400

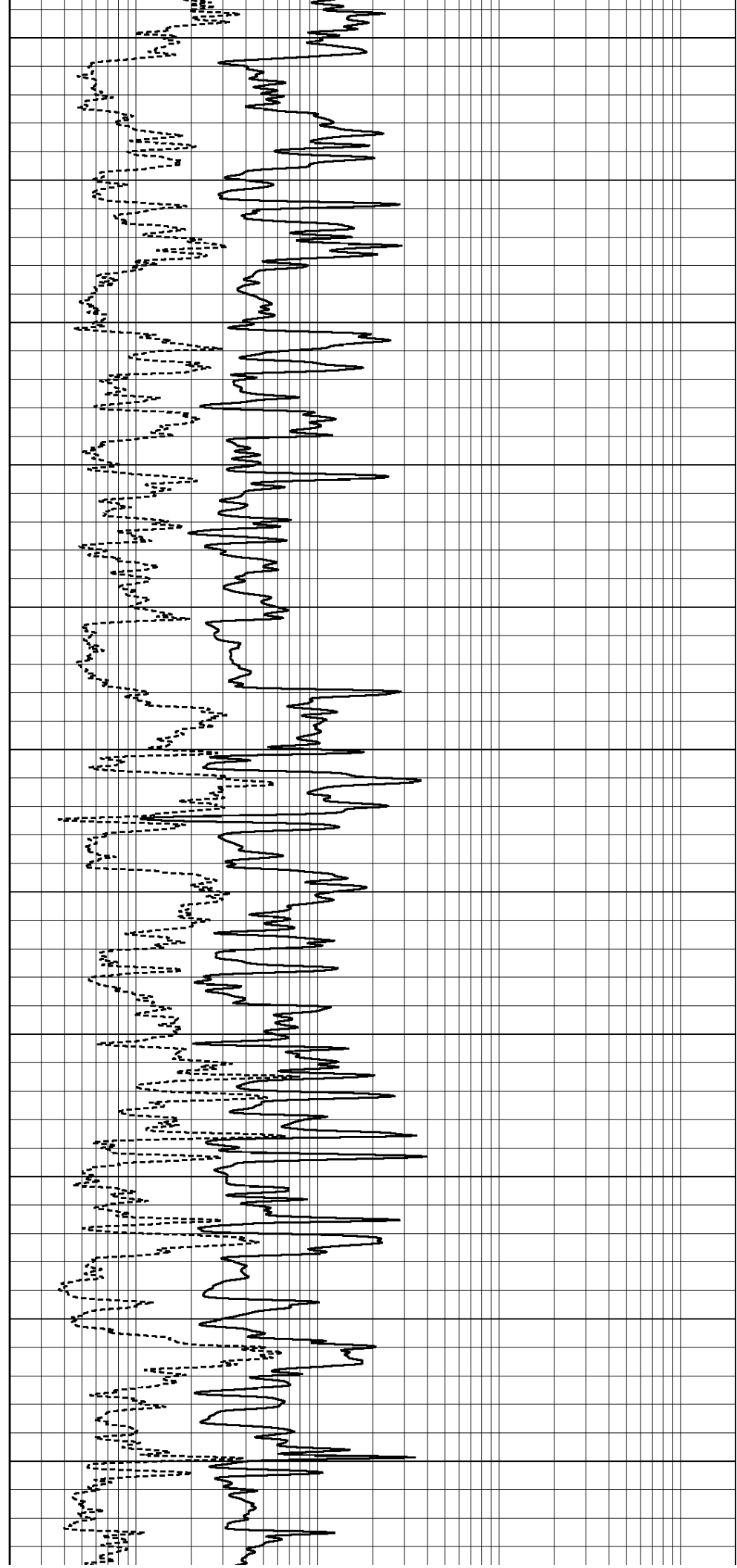
2450

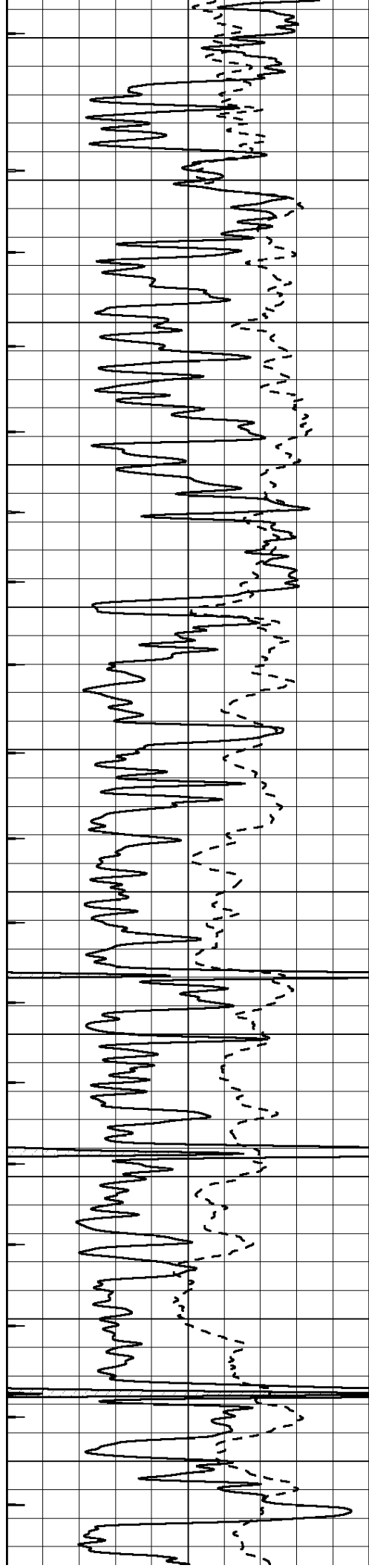
2500

2550

2600

2650





2700

2750

2800

2850

2900

2950

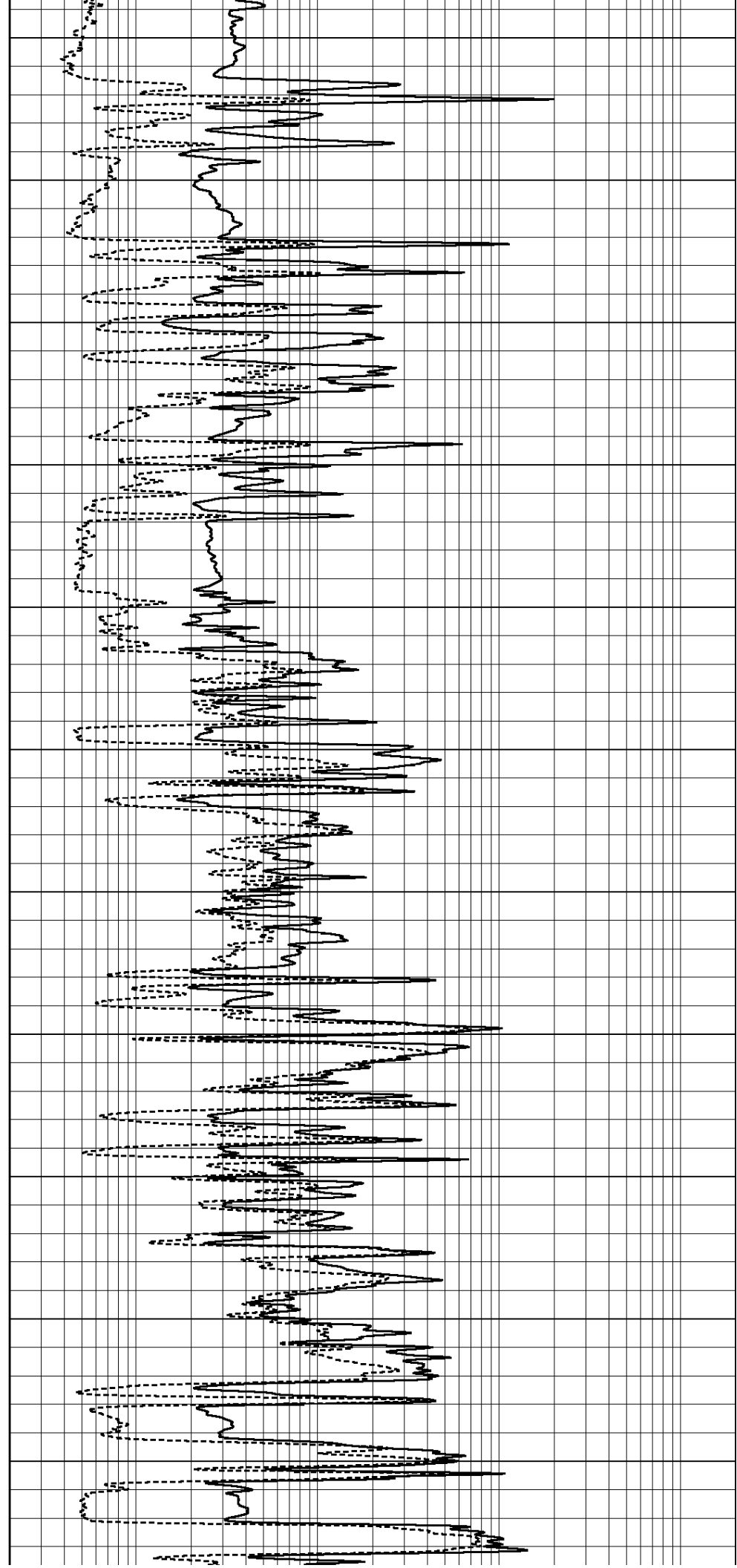
3000

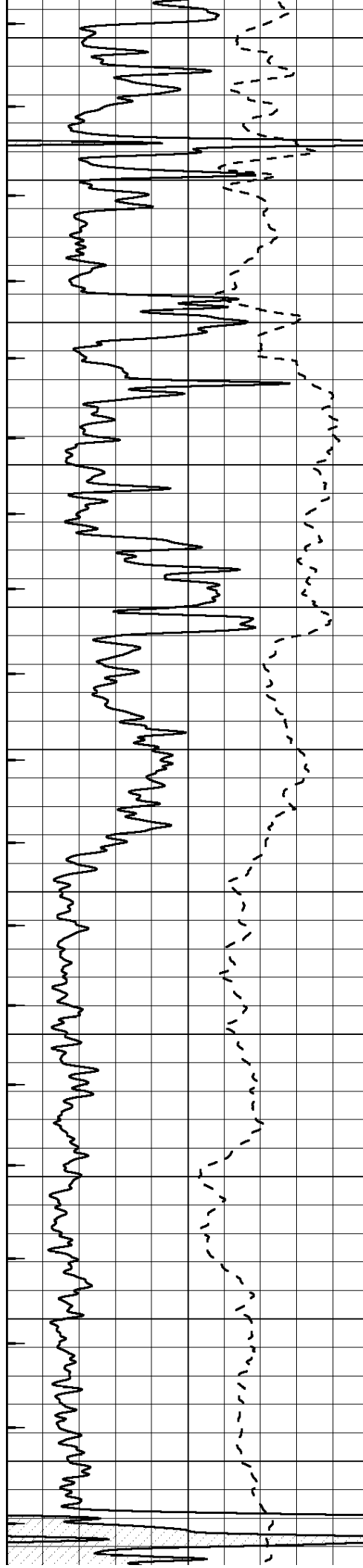
3050

3100

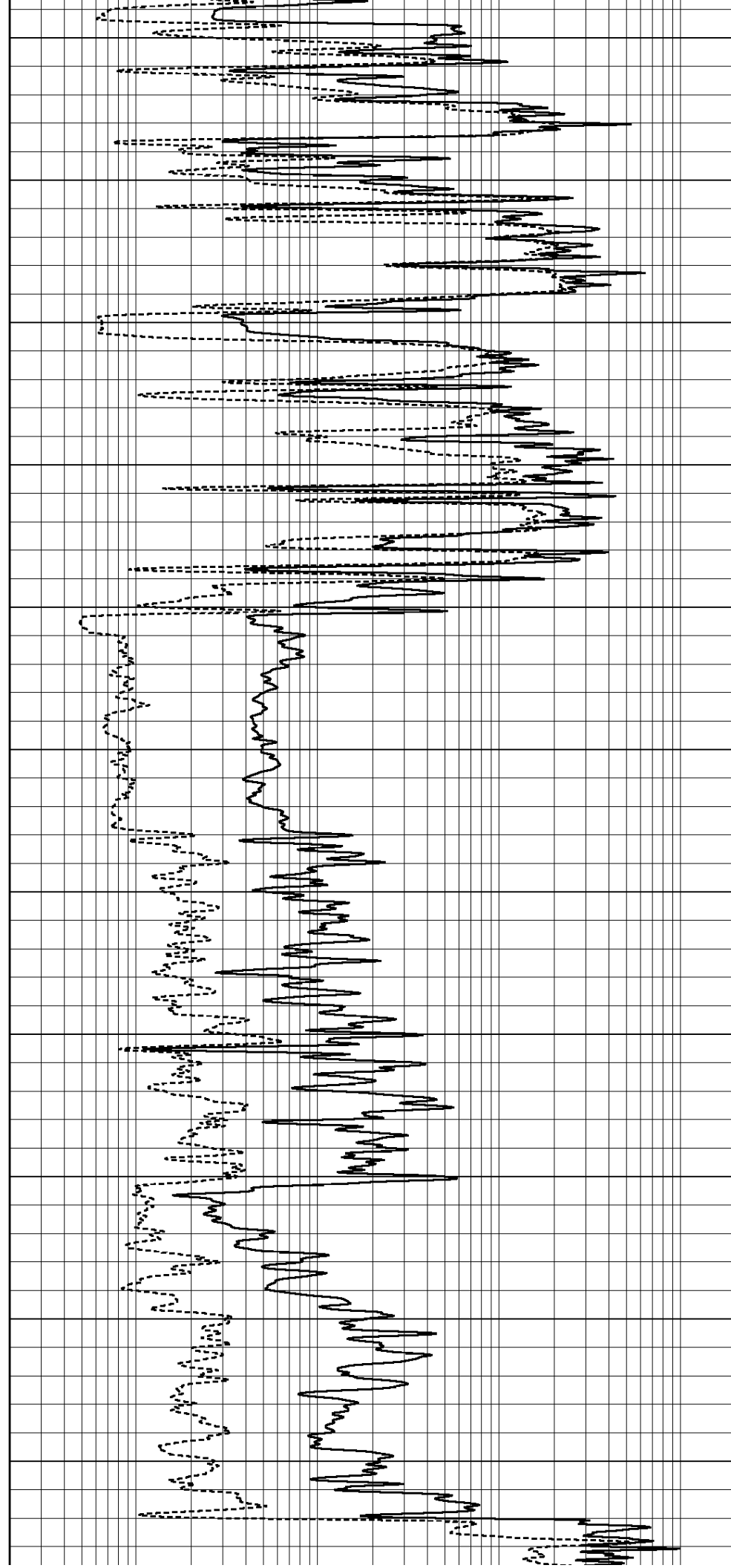
3150

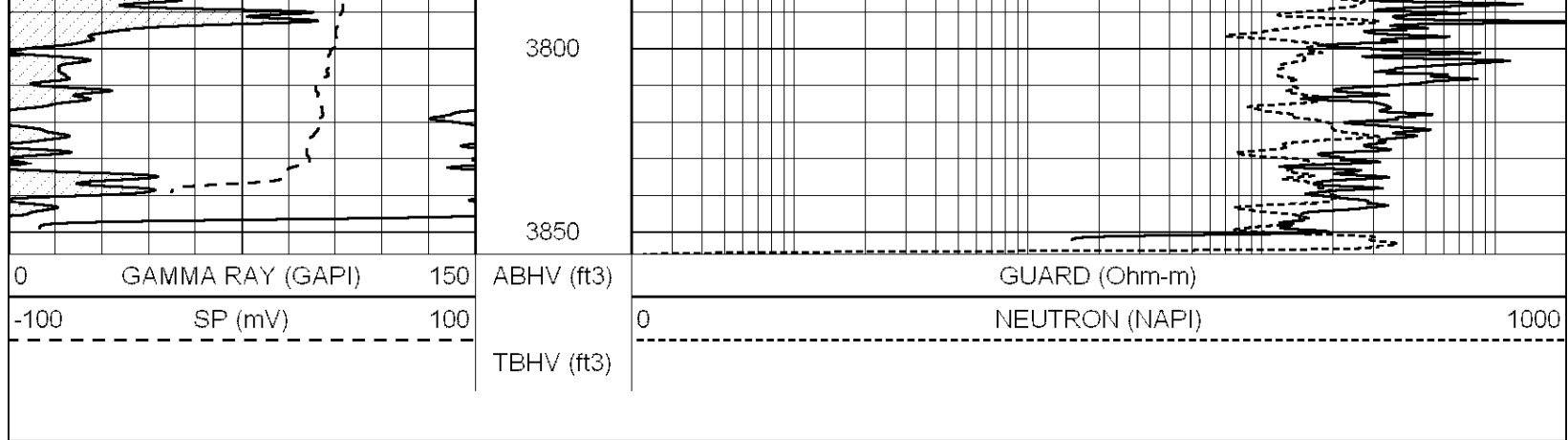
3200



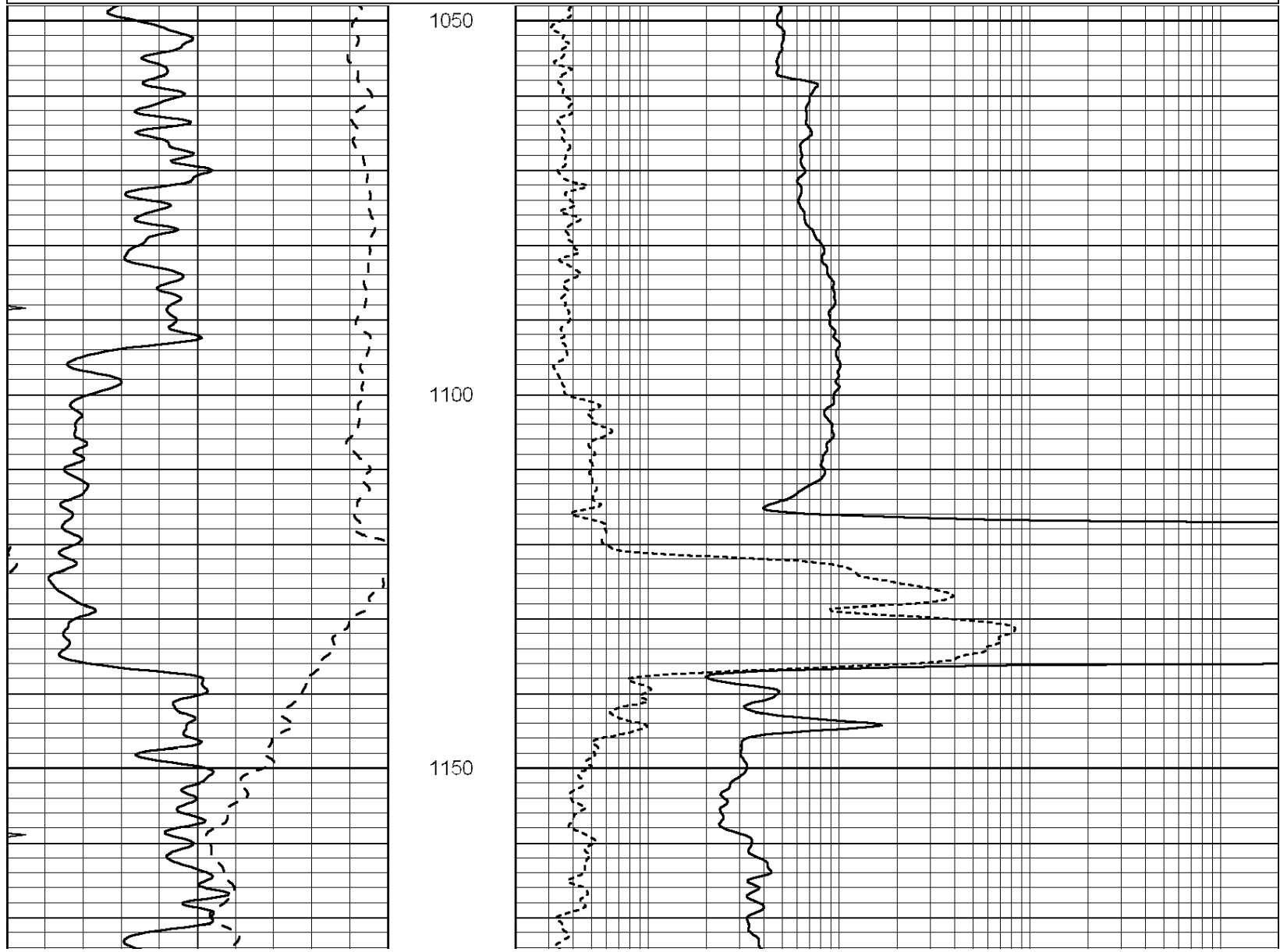
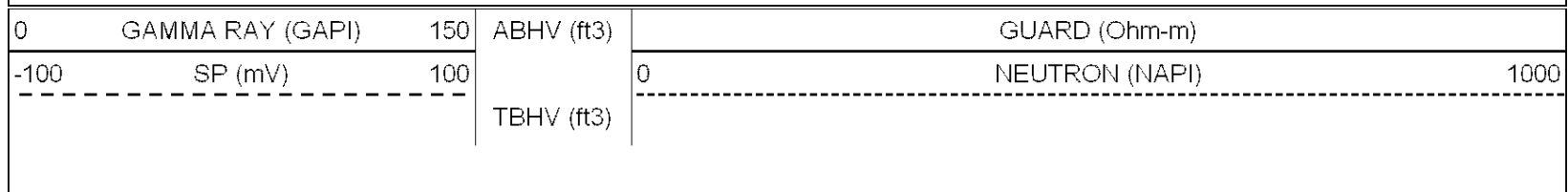


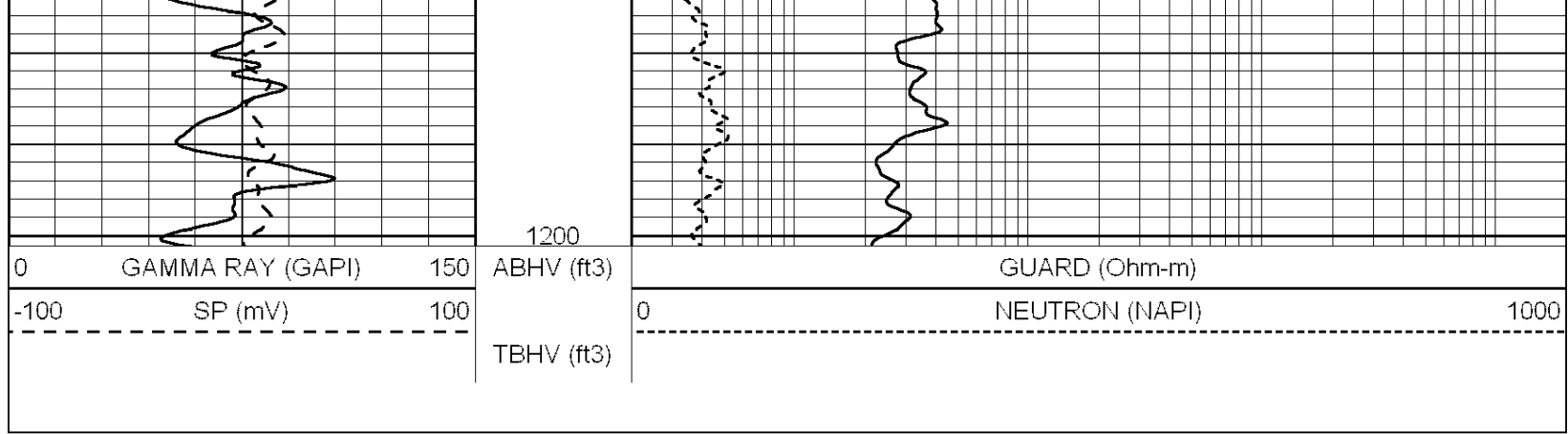
3250
3300
3350
3400
3450
3500
3550
3600
3650
3700
3750



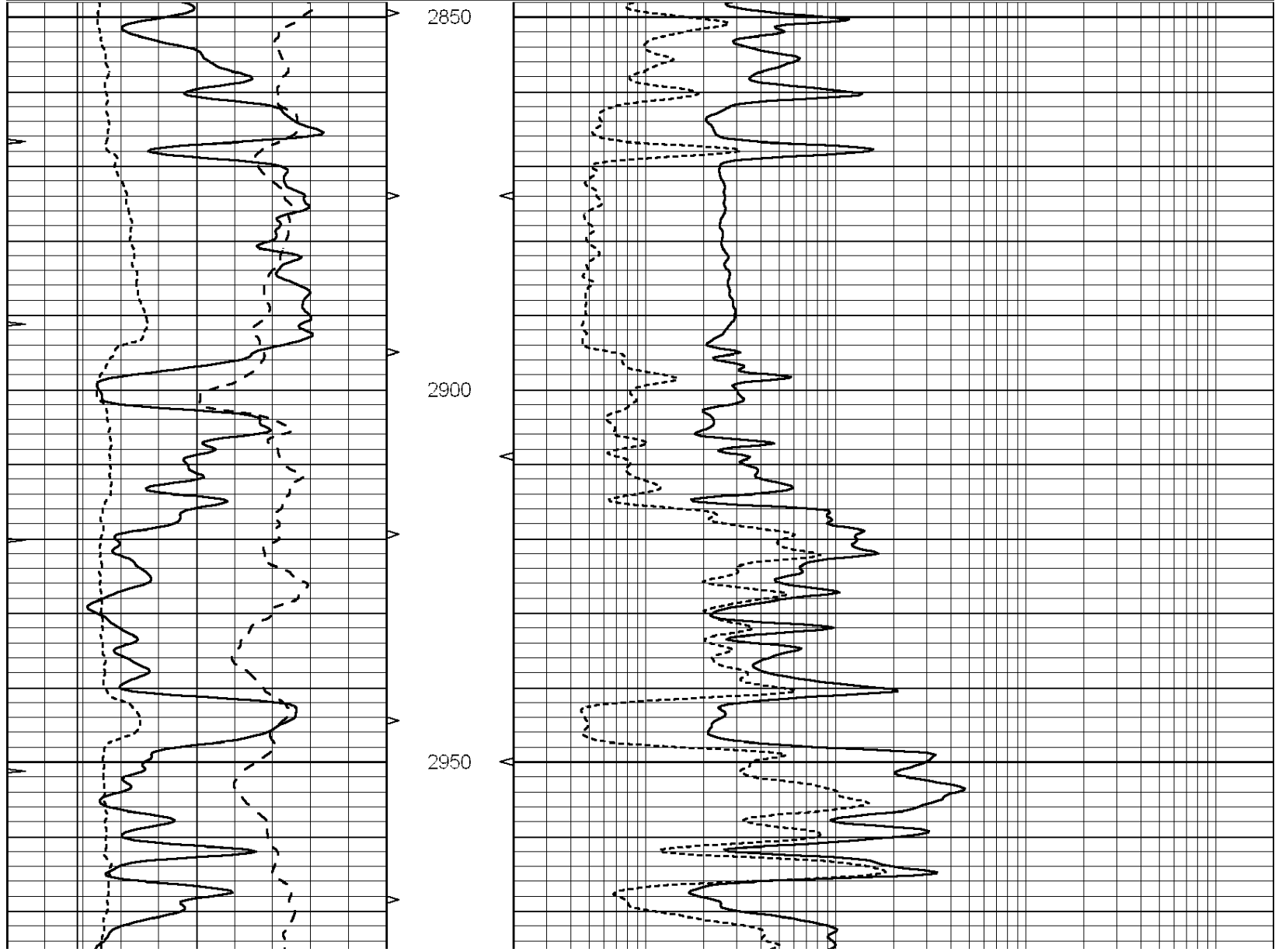
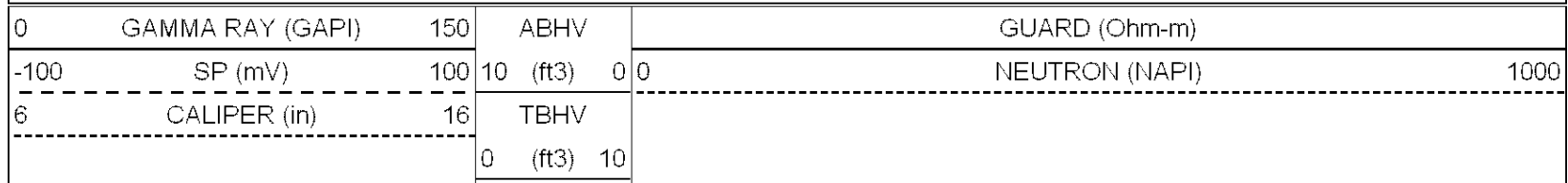


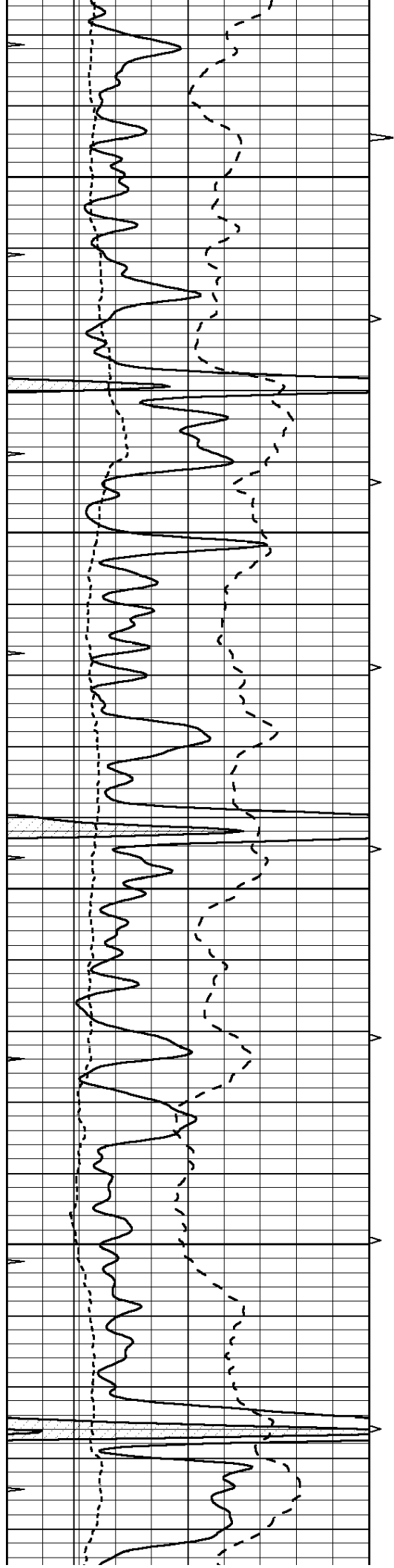
Database File: 9123rag.db
 Dataset Pathname: pass4.5
 Presentation Format: rag2
 Dataset Creation: Tue May 22 10:39:32 2012 by Calc Open-Cased 090629
 Charted by: Depth in Feet scaled 1:240





Database File: 9123rag.db
 Dataset Pathname: pass4.4
 Presentation Format: rag
 Dataset Creation: Tue May 22 10:06:27 2012 by Calc Open-Cased 090629
 Charted by: Depth in Feet scaled 1:240



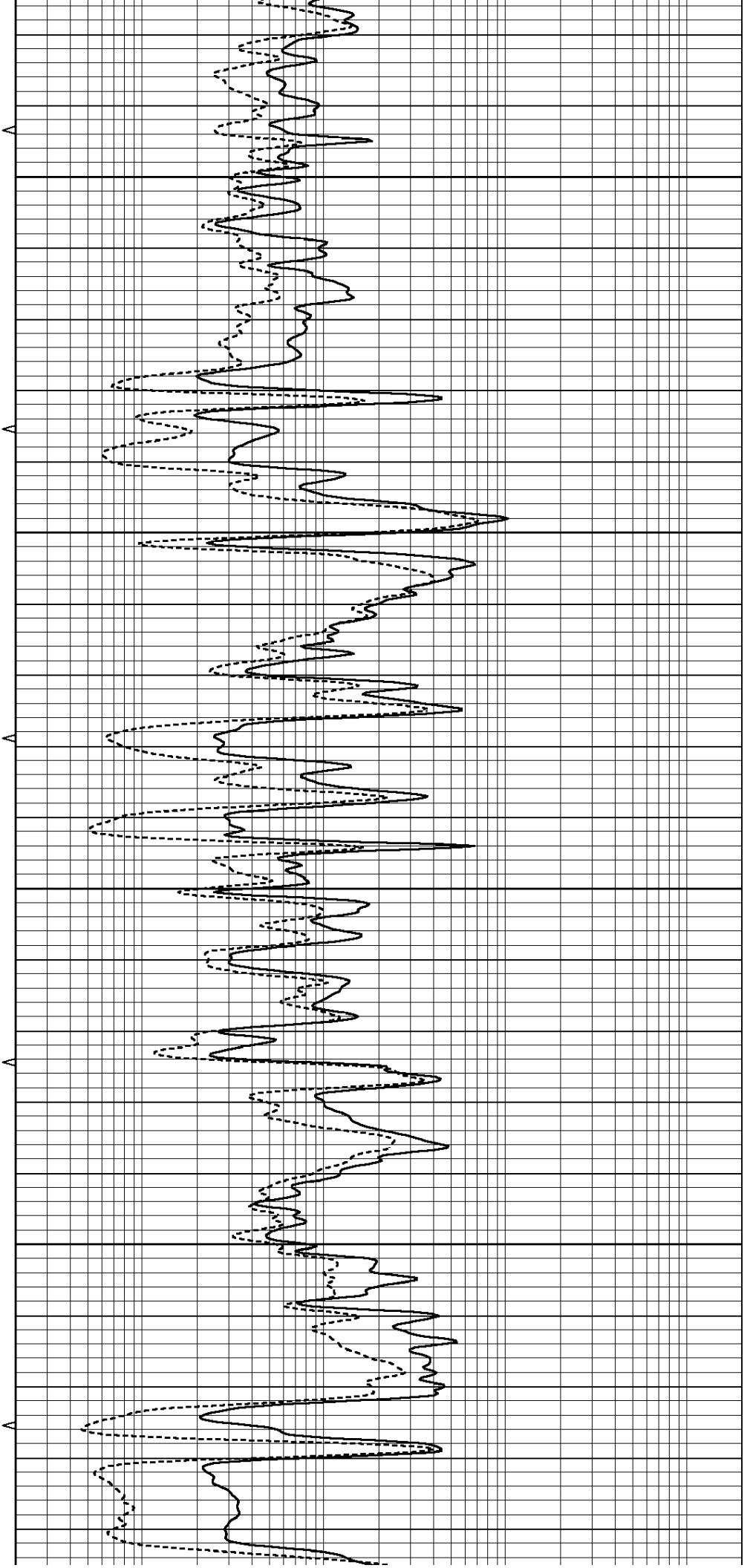


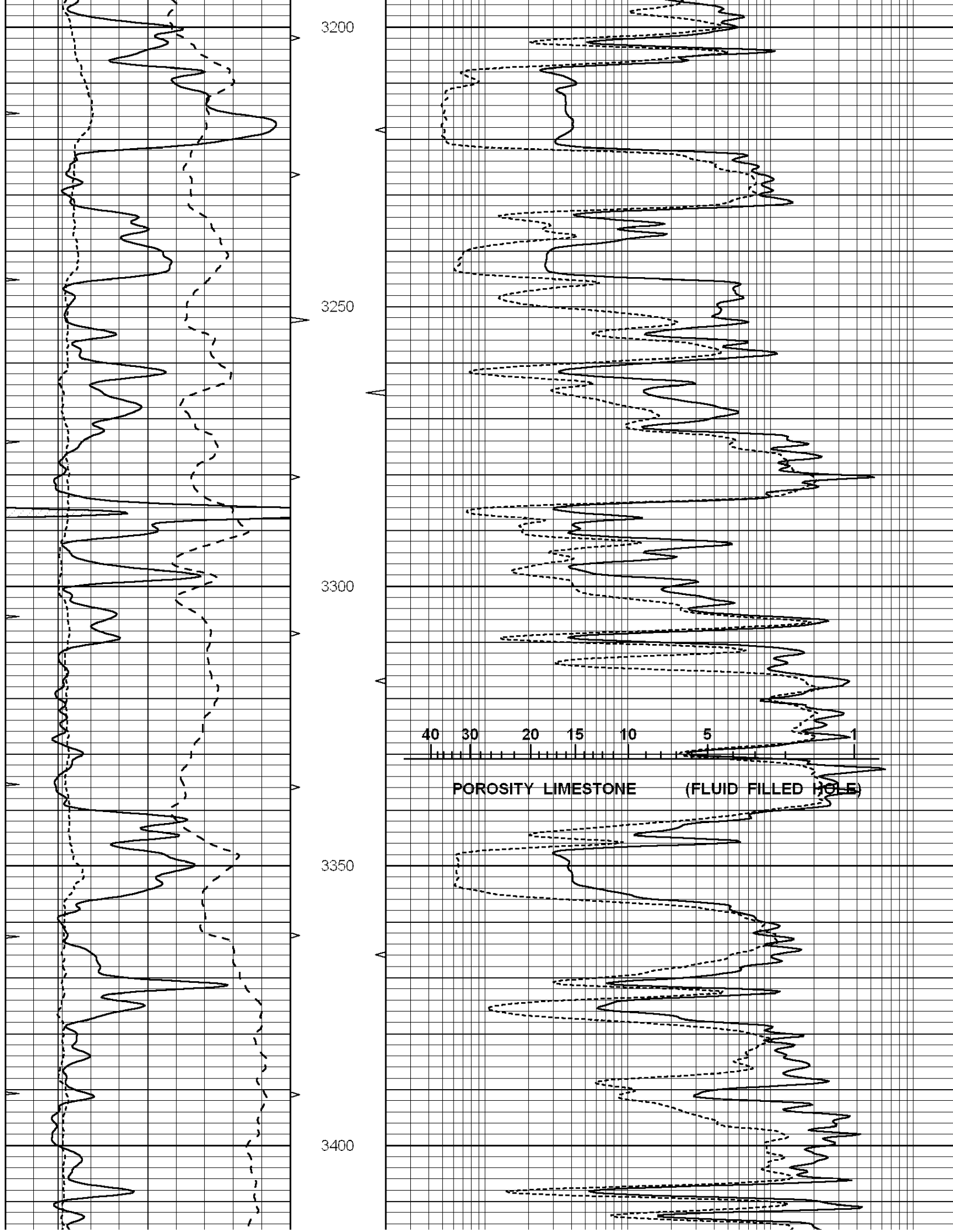
3000

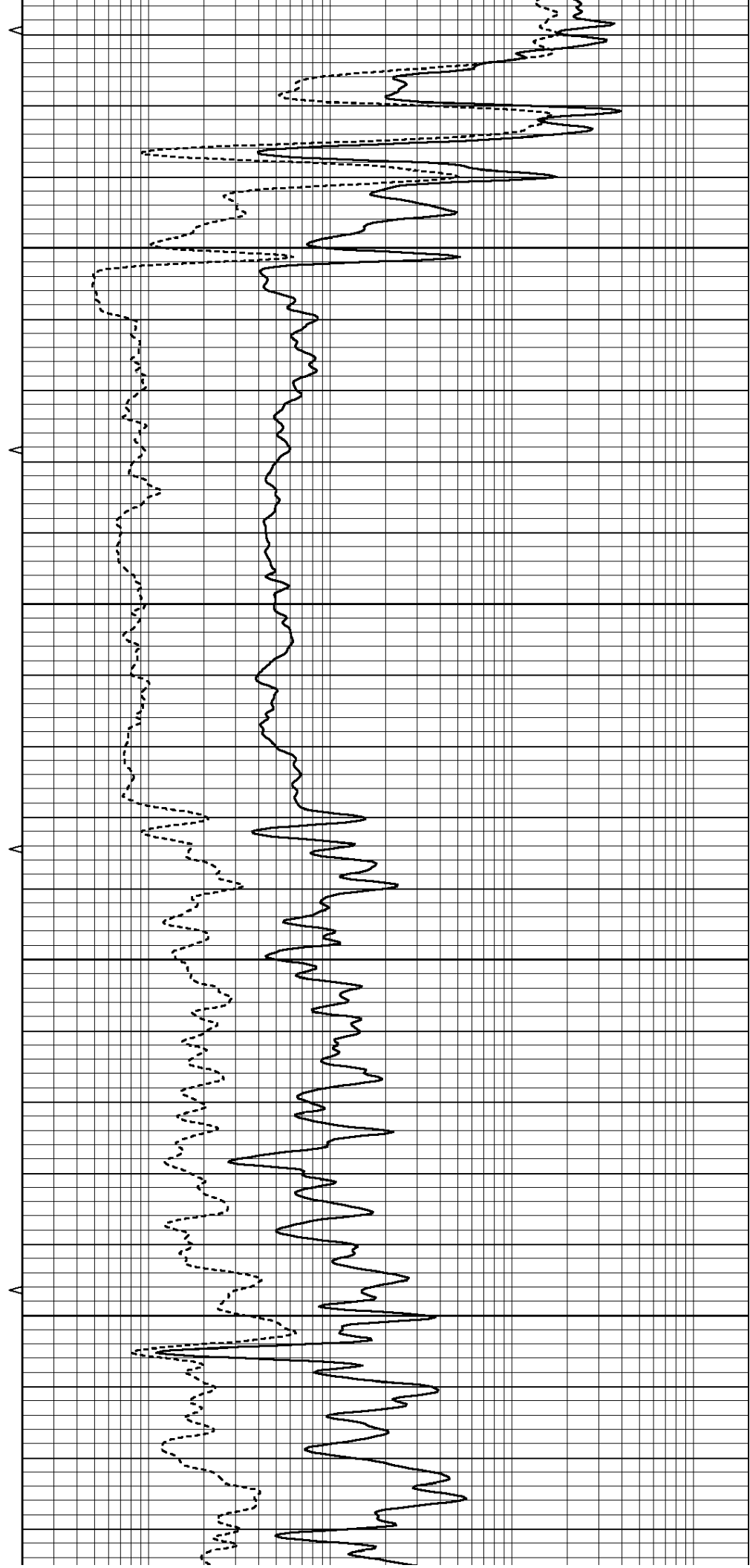
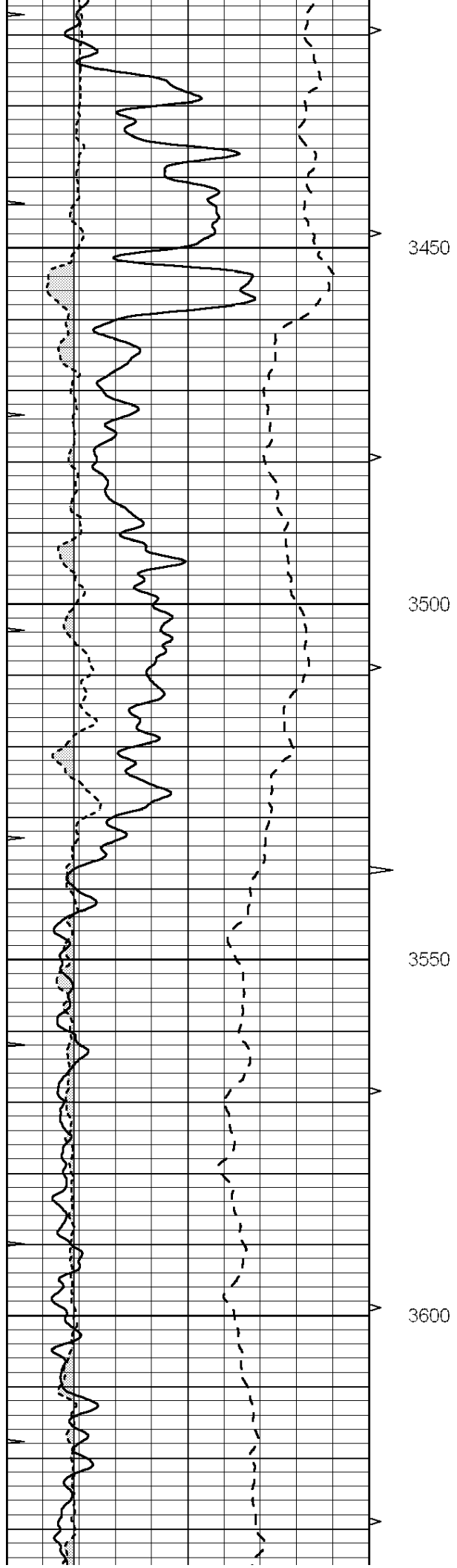
3050

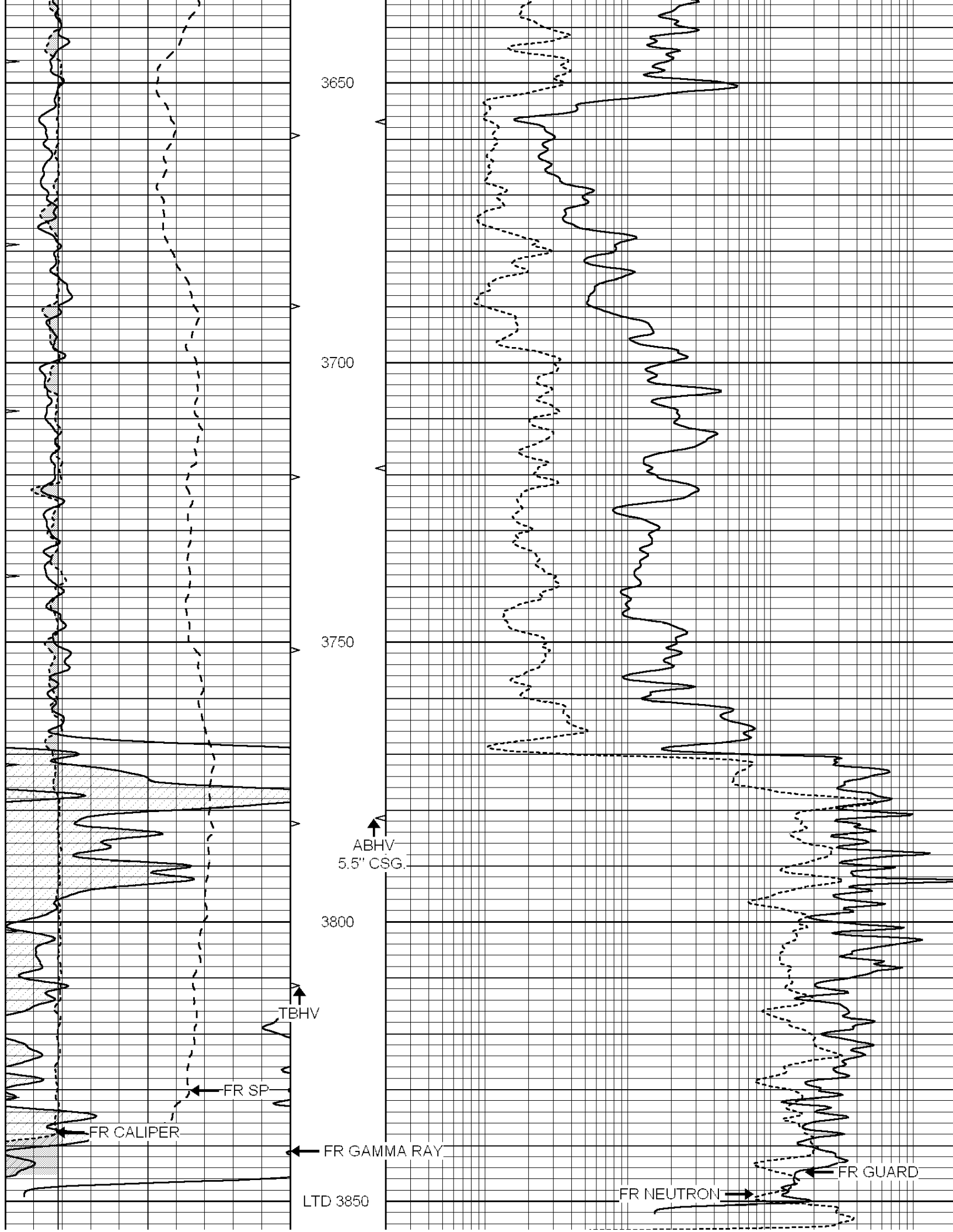
3100

3150









0	GAMMA RAY (GAPI)	150	ABHV		GUARD (Ohm-m)	
-100	SP (mV)	100	10 (ft3)	0 0	NEUTRON (NAPI)	1000
6	CALIPER (in)	16	TBHV			
			0 (ft3)	10		

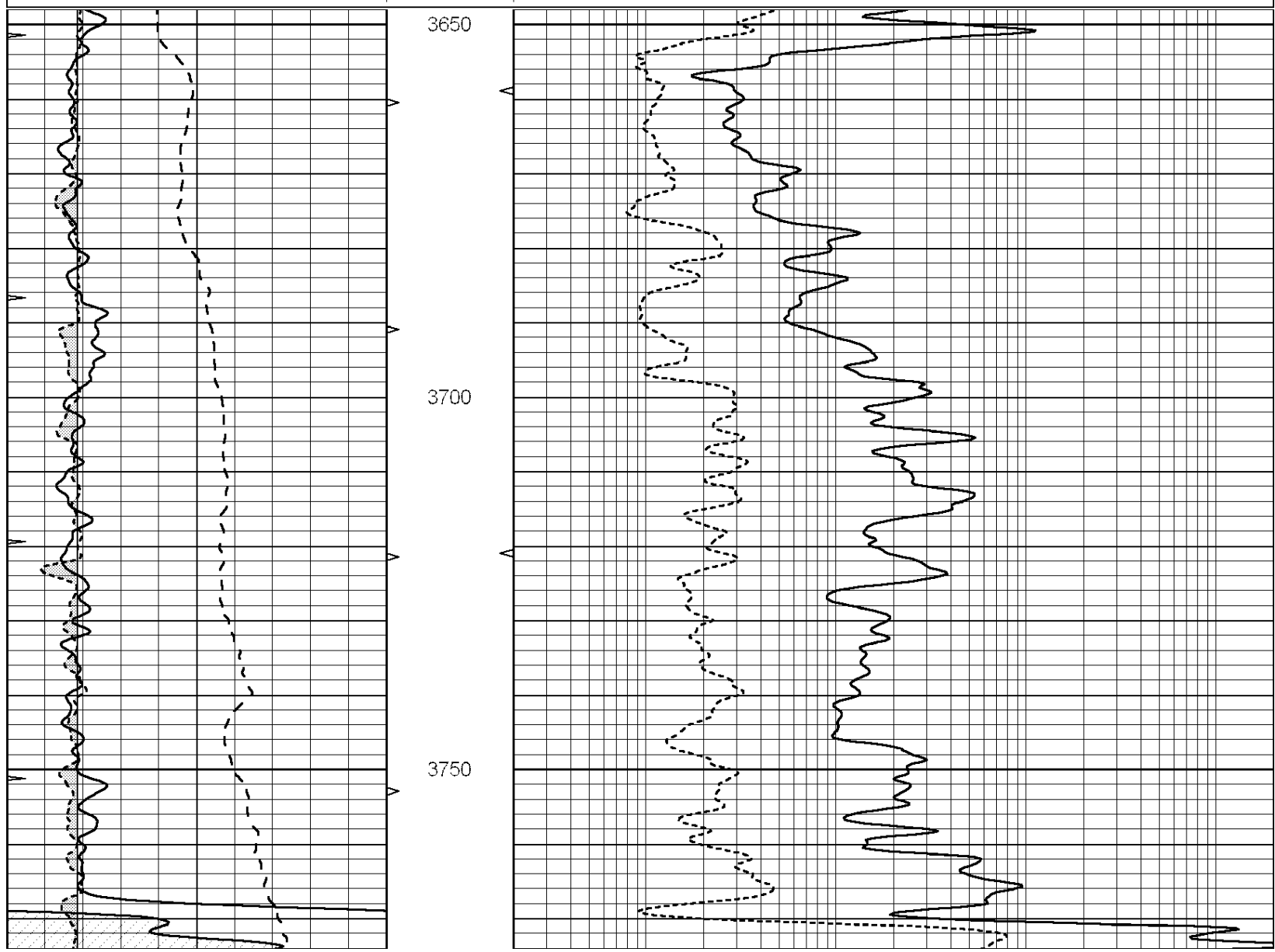


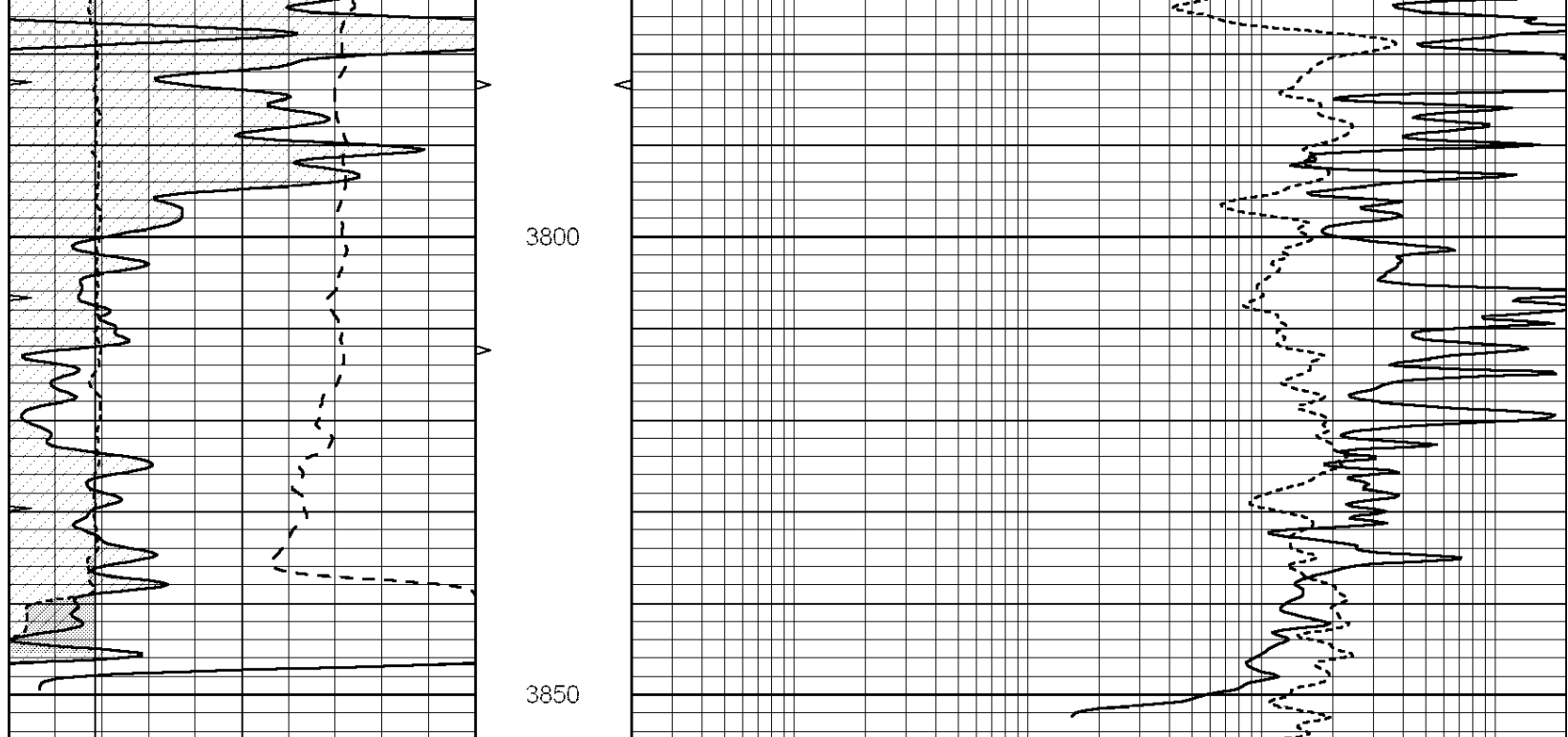
SUPERIOR
Hays,
Kansas

REPEAT SECTION

Database File: 9123rag.db
 Dataset Pathname: pass2.5
 Presentation Format: rag
 Dataset Creation: Tue May 22 10:16:03 2012 by Calc Open-Cased 090629
 Charted by: Depth in Feet scaled 1:240

0	GAMMA RAY (GAPI)	150	ABHV		GUARD (Ohm-m)	
-100	SP (mV)	100	10 (ft3)	0 0	NEUTRON (NAPI)	1000
6	CALIPER (in)	16	TBHV			
			0 (ft3)	10		





0	GAMMA RAY (GAPI)	150	ABHV		GUARD (Ohm-m)
-100	SP (mV)	100	10 (ft3)	0 0	NEUTRON (NAPI)
6	CALIPER (in)	16	TBHV		
			0 (ft3)	10	