



MIDWEST SURVEYS
 LOGGING - PERFORATING - CONSULTING SERVICES
 P.O. Box 88, Osawatomie, KS 66064
 913 / 735 - 2128

GAMMA RAY / NEUTRON / CCL

File No. Company **R. T. Enterprises Of Kansas, LLC**

Well **Finnerty No - 32**

Field **Baldwin**

County **Douglas**

State **Kansas**

Location **835 FSL & 1160' FEL
SW-NW-SE-SE**

Sec. 11 Twp. 15s Rge. 20e

Permament Datum **GL** Elevation **1066'**

Log Measured From **GL** K.B. NA

Drilling Measured From **GL** D.F. NA

Date **05-17-2013** G.L. 1066'

Run Number **One**

Depth Driller **980.0**

Bottom Logged Interval **914.0**

Top Log Interval **20.0**

Fluid Level **Full**

Type Fluid **Water**

Density / Viscosity **NA**

Salinity - PPM Cl **NA**

Max Recorded Temp **NA**

Estimated Cement Top **0.0**

Equipment No. **102** Location **Oswatomie**

Recorded By **Gary Windsor**

BORE-HOLE RECORD				CASING RECORD			
Run	BIT No.	FROM	TO	SIZE	WGHT	FROM	TO
One	9 875"	0.0	89.9	7.00"	17.0 #	0.0	89.9
Two	5 625"	89.9	930.0	2.875"	6.5 #	0.0	930.0
				Barite	Set	At	918.26

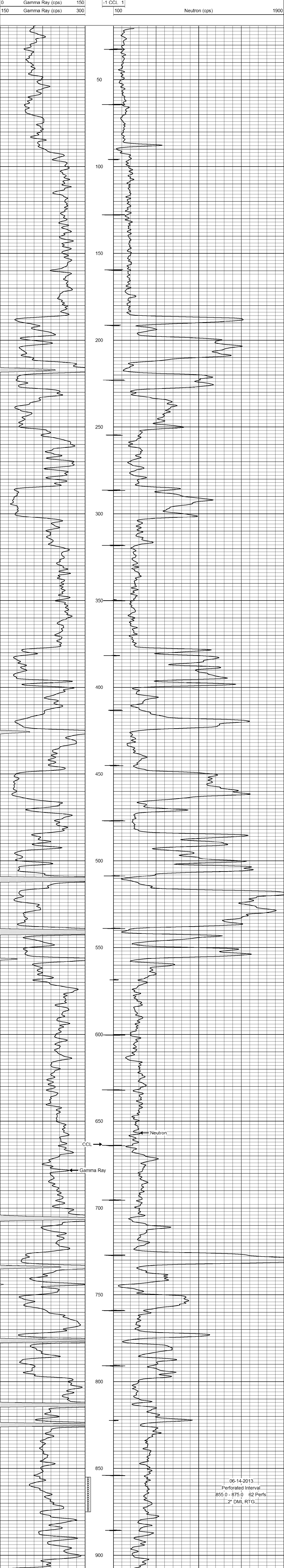
<<< Fold Here >>>

All interpretations are opinions based on inferences from electrical or other measurements and we cannot and do not guarantee the accuracy or correctness of any interpretation, and we shall not, except in the case of gross or willful negligence on our part, be liable or responsible for any loss, costs, damages, or expenses incurred or sustained by anyone resulting from any interpretation made by any of our officers, agents or employees. These interpretations are also subject to our general terms and conditions set out in our current Price Schedule.

Comments

Drilling Contractor :
Town Oilfield Services, Inc.

Database File: finnerty32.db
 Dataset Pathname: pass1
 Presentation Format: gr-n-ccl
 Dataset Creation: Fri May 17 13:54:01 2013 by Log SCH 111116
 Charted by: Depth in Feet scaled 1:240



06-14-2013
 Perforated Interval
 855.0 - 875.0 62 Perfs
 2" DML RTG