



MIDWEST SURVEYS
 LOGGING - PERFORATING - CONSULTING SERVICES
 P.O. Box 88, Osawatomie, KS 66064
 913 / 735 - 2128

GAMMA RAY / NEUTRON / CCL

File No. Company **R. T. Enterprises Of Kansas, LLC**

Well **Finnerty No. - 25**

Field **Baldwin**

County **Douglas** State **Kansas**

Location **1157 FSL & 840' FEL
NE-NW-SE-SE**

Other Services
Perforate

Sec. 11 Twp. 15s Rge. 20e
 Permanent Datum **GL** Elevation **NA**
 Log Measured From **GL** K.B. NA
 Drilling Measured From **GL** D.F. NA
 G.L. NA

Date **05-13-2013**

Run Number **One**

Depth Driller **980.0**

Bottom Logged Interval **912.2**

Top Log Interval **20.0**

Fluid Level **Full**

Type Fluid **Water**

Density / Viscosity **NA**

Salinity - PPM Cl **NA**

Max Recorded Temp **NA**

Estimated Cement Top **0.0**

Equipment No. **102** Location **Osawatimie**

Recorded By **Gary Windish**

Witnessed By **Lance Town**

| BORE-HOLE RECORD | | CASING RECORD | | TO |
|------------------|--------|---------------|--------|-------|
| No. | BIT | FROM | TO | TO |
| One | 9.875" | 88.0 | 88.0 | 88.0 |
| Two | 5.625" | 88.0 | 990.0 | 990.0 |
| | | SIZE | WGHT | FROM |
| | | 7.00" | 17.0 # | 88.0 |
| | | 2.875" | 6.5 # | 990.0 |
| | | Bathe | Set | At |
| | | | | 916.0 |

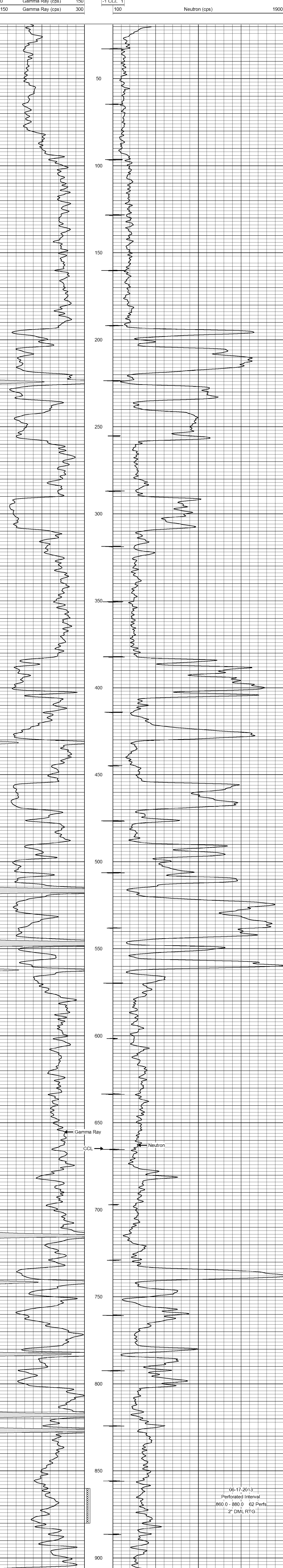
<<< Fold Here >>>

All interpretations are opinions based on inferences from electrical or other measurements and we cannot and do not guarantee the accuracy or correctness of any interpretation, and we shall not, except in the case of gross or willful negligence on our part, be liable or responsible for any loss, costs, damages, or expenses incurred or sustained by anyone resulting from any interpretation made by any of our officers, agents or employees. These interpretations are also subject to our general terms and conditions set out in our current Price Schedule.

Comments

Drilling Contractor :
Town Oilfield Services, Inc.

Database File: finnerty25.db
 Dataset Pathname: pass1
 Presentation Format: gr-n-ccl
 Dataset Creation: Thu Jun 13 13:06:29 2013 by Log SCH 111116
 Charted by: Depth in Feet scaled 1:240



06-17-2013
 Perforated Interval
 860.0 - 880.0 62 Perfs.
 2" DML RTG