

Rmc @ Measured Temp (degF)	N/A @ N/A	N/A @ N/A	N/A @ N/A	N/A @ N/A	
Max Tool Temp (degF) / Source	57.30 / PCM	144.54 / PCM	145.00 / PCM	116.00 / PCM	
Rm @ Max Tool Temp (degF)	N/A @ 57.30	N/A @ 144.54	N/A @ 145.00	N/A @ 116.00	
Lead MWD Engineer	Aaron Ashu	Aaron Ashu	Aaron Ashu	Aaron Ashu	
Customer Representative	Clayton Carmack	Clayton Carmack	Clayton Carmack	Clayton Carmack	

SENSOR INFORMATION

Downhole Processor Information

Tool Type	PCM	PCM	PCM	PCM	
Software Version	5.28	5.28	5.28	5.28	
Sub Serial Number	11341316	11341316	11232127	11232127	
Insert Serial Number	11619991	11619991	11680900	11680900	
Date and Time Initialized	18-Feb-13 19:07	04-Mar-13 14:44	07-Mar-13 23:02	07-Mar-13 23:02	
Date and Time Read	20-Feb-13 10:43	07-Mar-13 18:50	11-Mar-13 20:01	11-Mar-13 20:08	
ECMB SW Version	N/A	N/A	N/A	N/A	

Directional Sensor Information

Tool Type	PCDC	PCDC	PCDC	PCDC	
Distance From Bit (ft)	60.63	51.99	49.97	50.92	
Software Version	6.21	6.21	6.21	6.21	
Sub Serial Number	11341316	11341316	11232127	11232127	
Sonde Serial Number	11478088	11833032	11833032	11833032	
Sensor ID Number	N/A	N/A	N/A	N/A	
Toolface Offset (deg)	329.77	162.42	130.70	274.85	

Gamma Ray Sensor Information

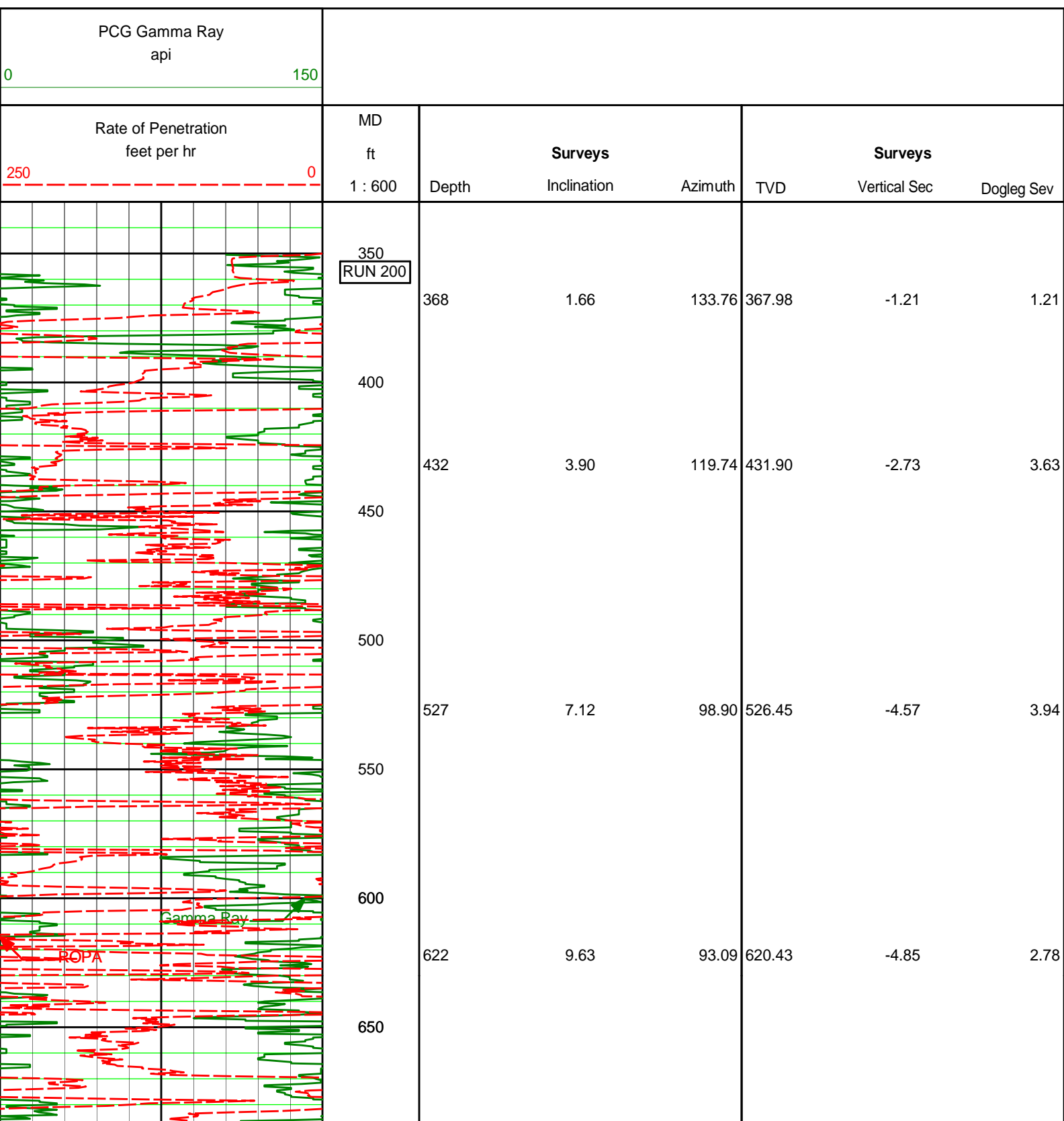
Tool Type	N/A	PCG	PCG	PCG	
Distance From Bit (ft)	N/A	46.93	44.89	45.84	
Recorded Sample Period (sec)	N/A	10	10	10	
Software Version	N/A	8.15	8.15	8.15	
Sub Serial Number	N/A	11341316	11232127	11232127	
Insert/Sonde Serial Number	N/A	11681039	11681039	11681039	

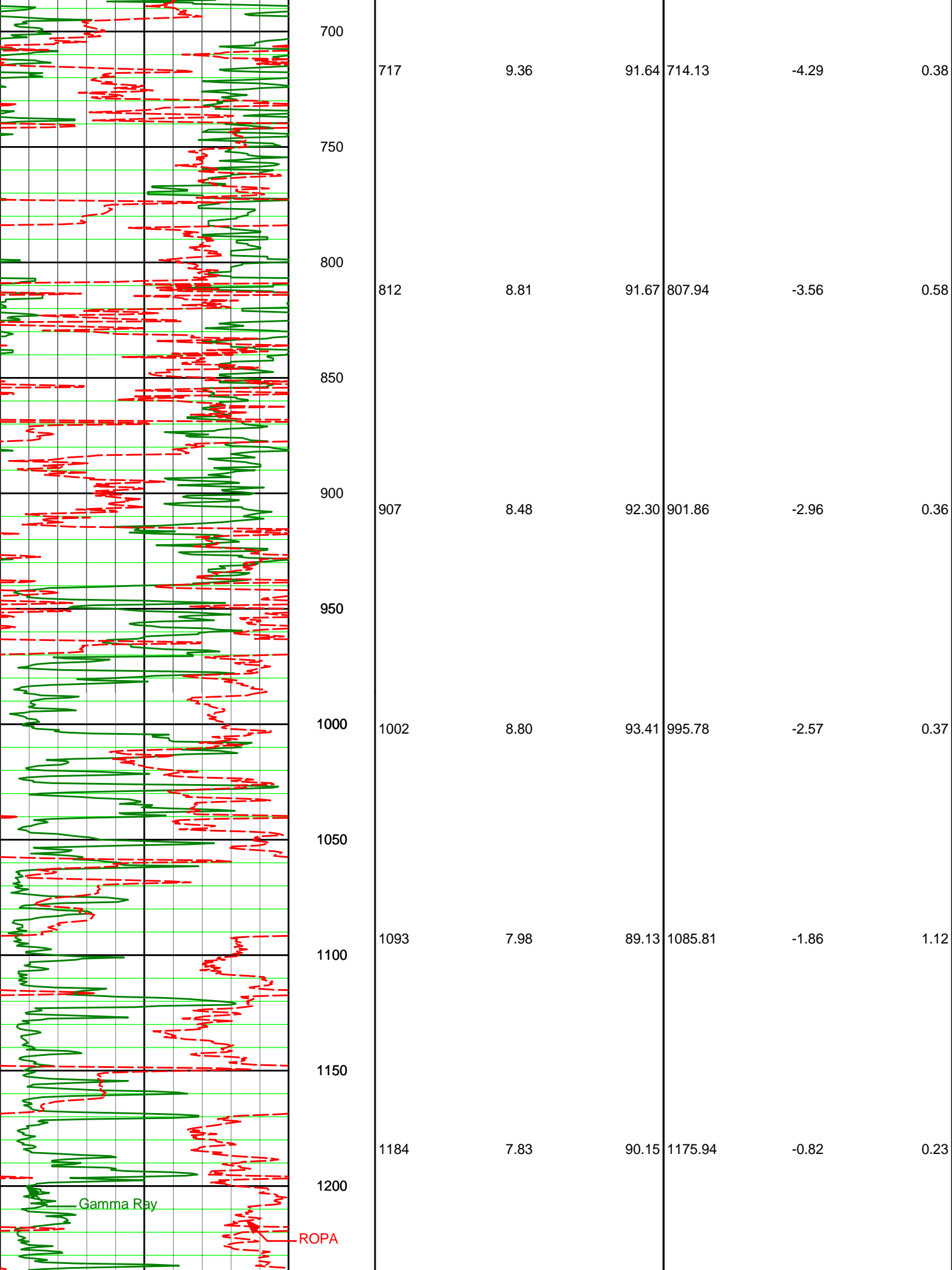
REMARKS

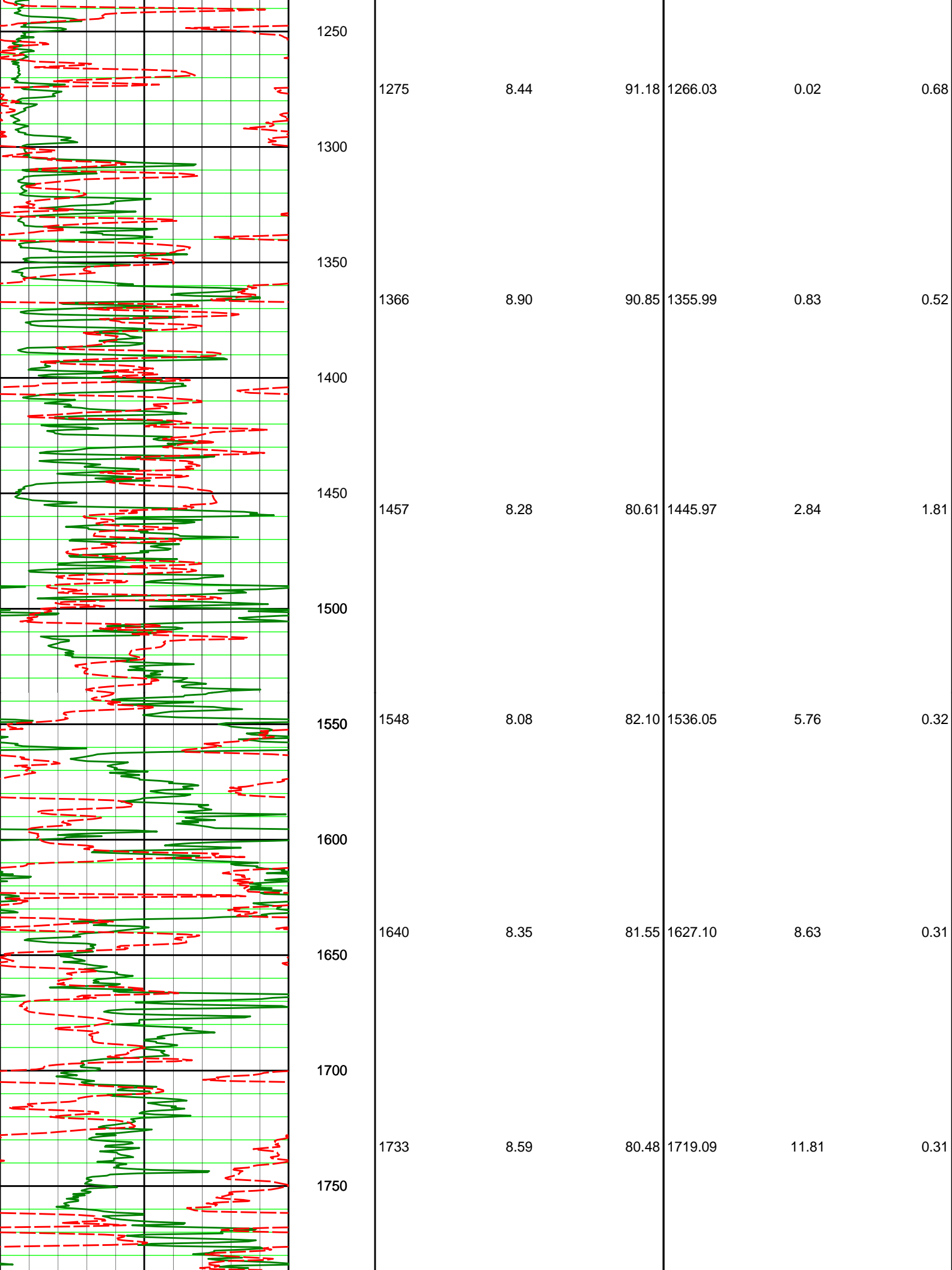
1. All depths are calibrated to the driller's pipe tally and are measured from the rotary table.
2. No depth corrections have been made for pipe stretch or compression.
3. All data presented is recorded (memory data) unless otherwise stated.
4. Run 100 was directional only, no gamma available for this run.
5. The following smoothing parameters have been applied to the data:
 - ROP: 1.0 ft interval, 3.0 ft coercion distance.
 - GAMMA: 0.5 ft interval, 0.6 ft coercion distance.

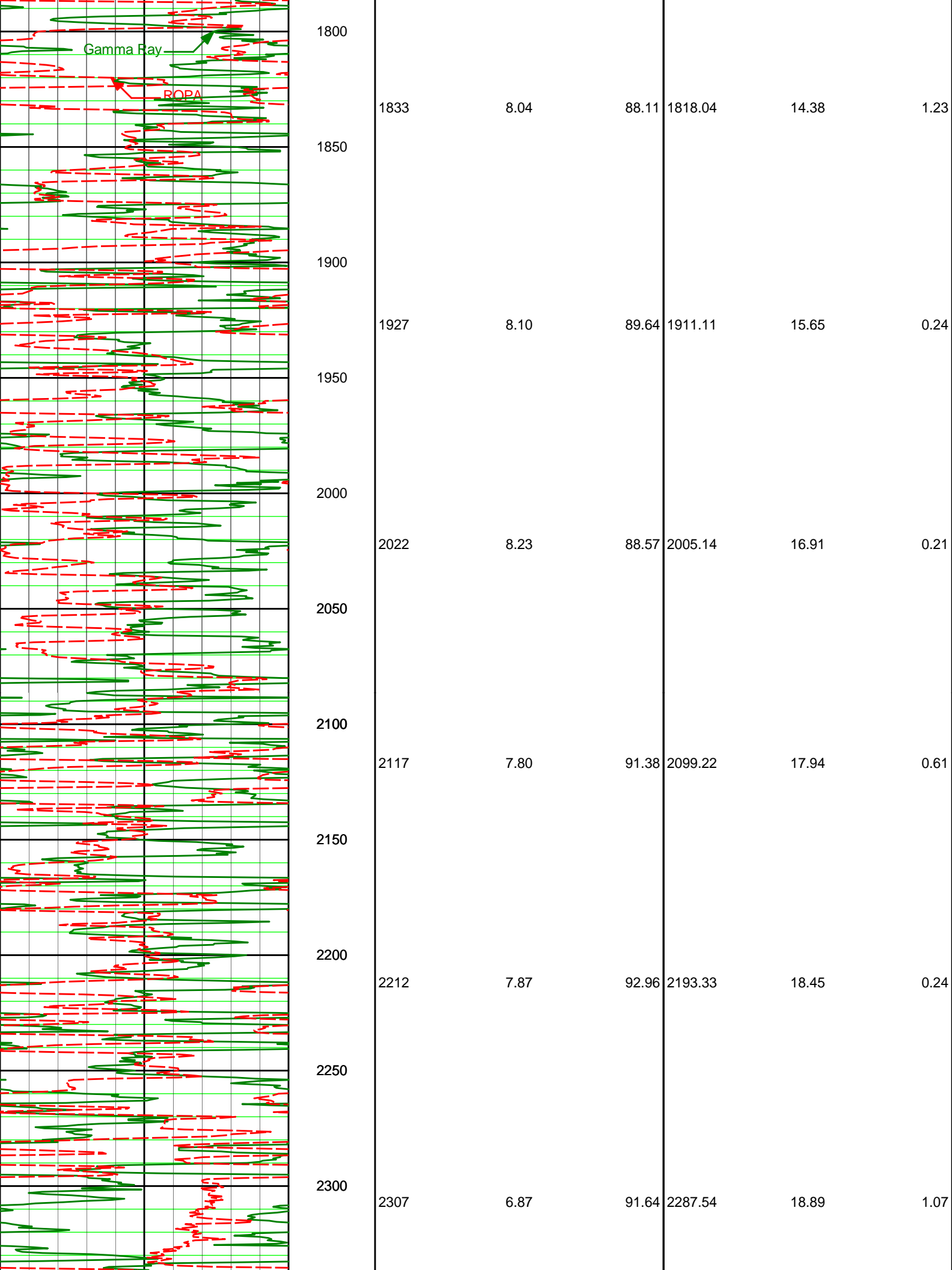
WARRANTY

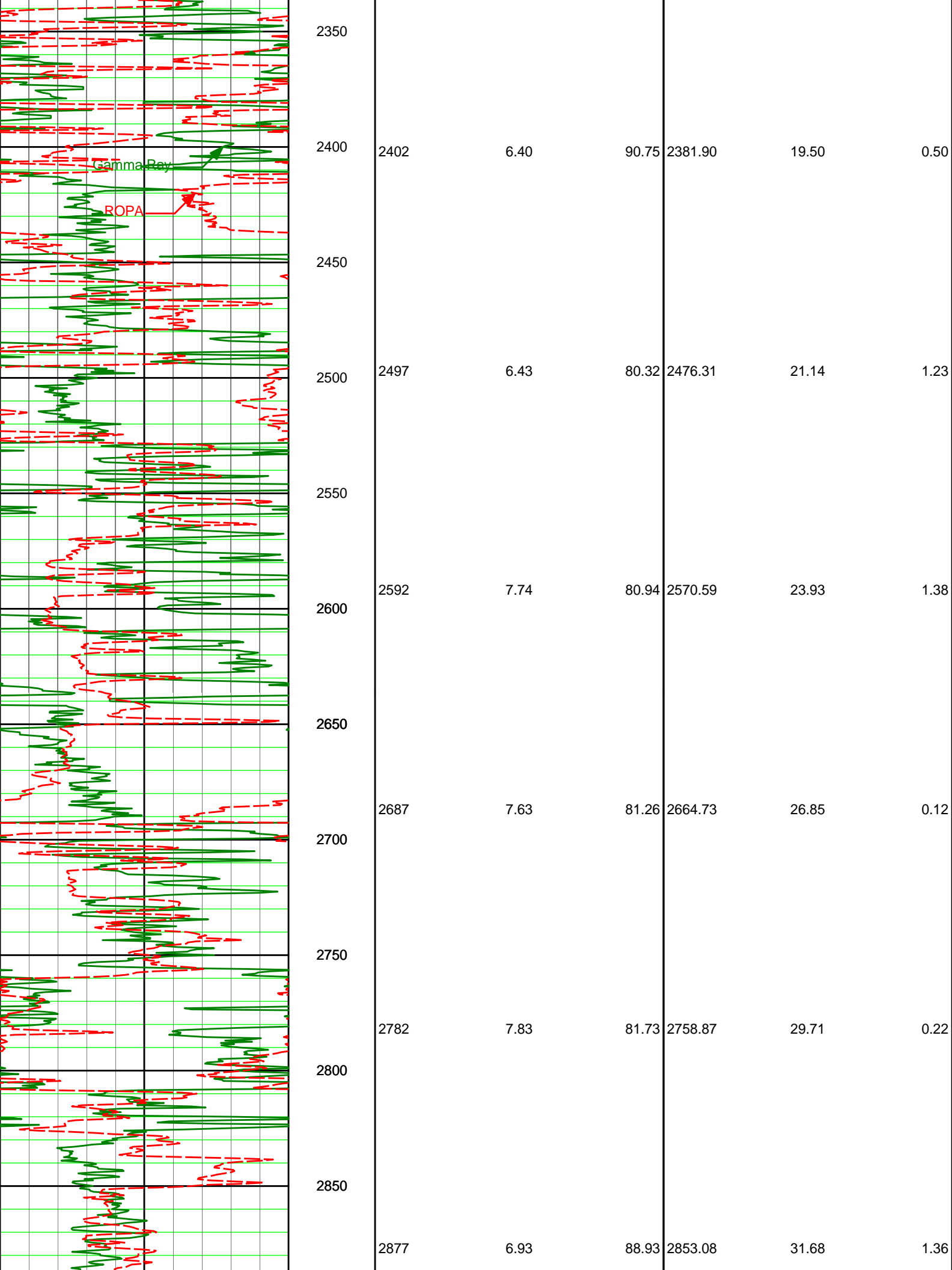
HALLIBURTON WILL USE ITS BEST EFFORTS TO FURNISH CUSTOMERS WITH ACCURATE INFORMATION AND INTERPRETATIONS THAT ARE PART OF, AND INCIDENT TO, THE SERVICES PROVIDED. HOWEVER, HALLIBURTON CANNOT AND DOES NOT WARRANT THE ACCURACY OR CORRECTNESS OF SUCH INFORMATION AND INTERPRETATIONS. UNDER NO CIRCUMSTANCES SHOULD ANY SUCH INFORMATION OR INTERPRETATION BE RELIED UPON AS THE SOLE BASIS FOR ANY DRILLING, COMPLETION, PRODUCTION, OR FINANCIAL DECISION OR ANY PROCEDURE INVOLVING ANY RISK TO THE SAFETY OF ANY DRILLING VENTURE, DRILLING RIG OR ITS CREW OR ANY OTHER THIRD PARTY. THE CUSTOMER HAS FULL RESPONSIBILITY FOR ALL DRILLING, COMPLETION AND PRODUCTION OPERATION. HALLIBURTON MAKES NO REPRESENTATIONS OR WARRANTIES, EITHER EXPRESSED OR IMPLIED, INCLUDING, BUT NOT LIMITED TO, THE IMPLIED WARRANTIES OF MERCHANTABILITY OR FITNESS FOR A PARTICULAR PURPOSE, WITH RESPECT TO THE SERVICES RENDERED. IN NO EVENT WILL HALLIBURTON BE LIABLE FOR FAILURE TO OBTAIN ANY PARTICULAR RESULTS OR FOR ANY DAMAGES, INCLUDING, BUT NOT LIMITED TO, INDIRECT, SPECIAL OR CONSEQUENTIAL DAMAGES, RESULTING FROM THE USE OF ANY INFORMATION OR INTERPRETATION PROVIDED BY HALLIBURTON.

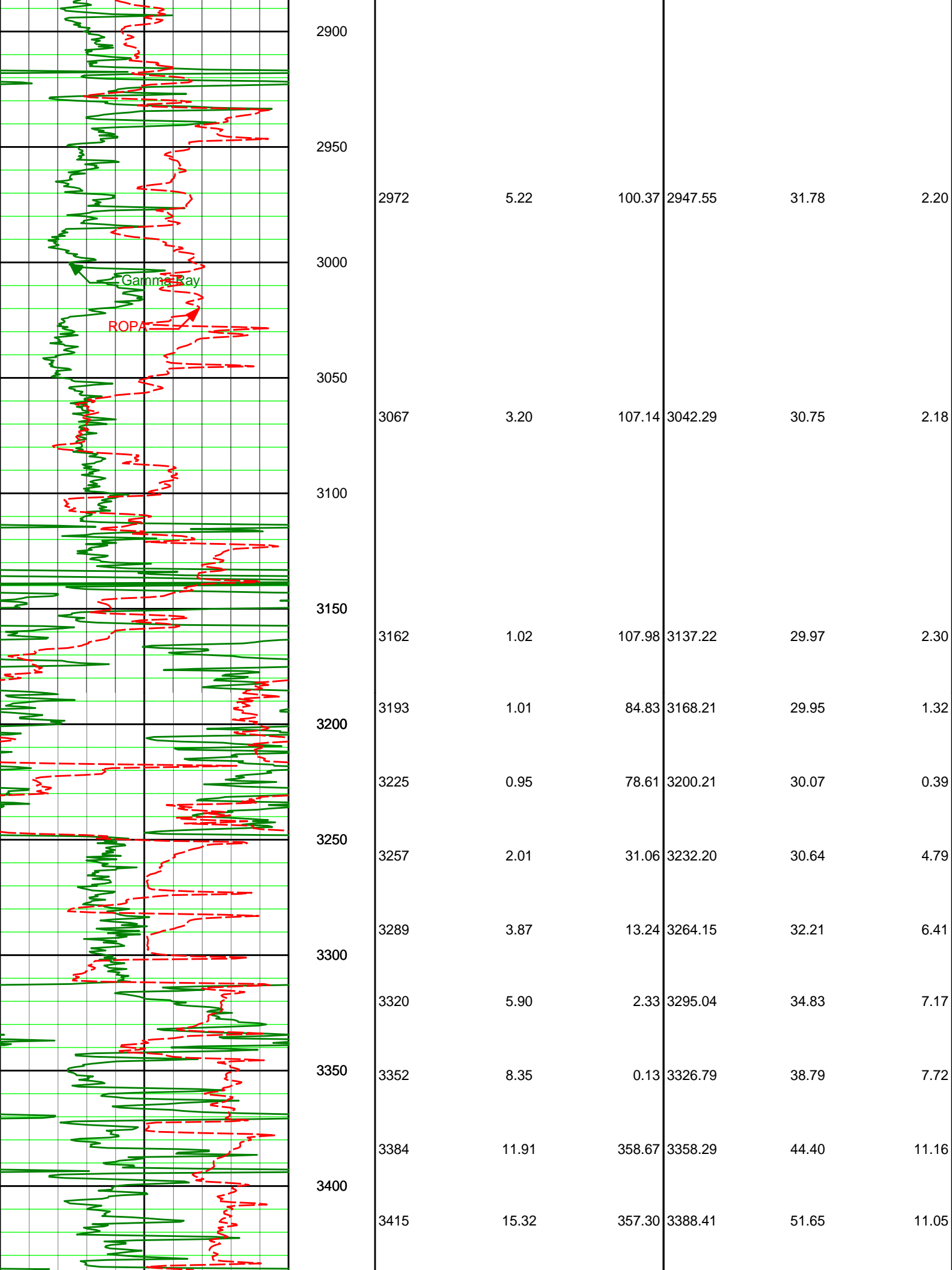


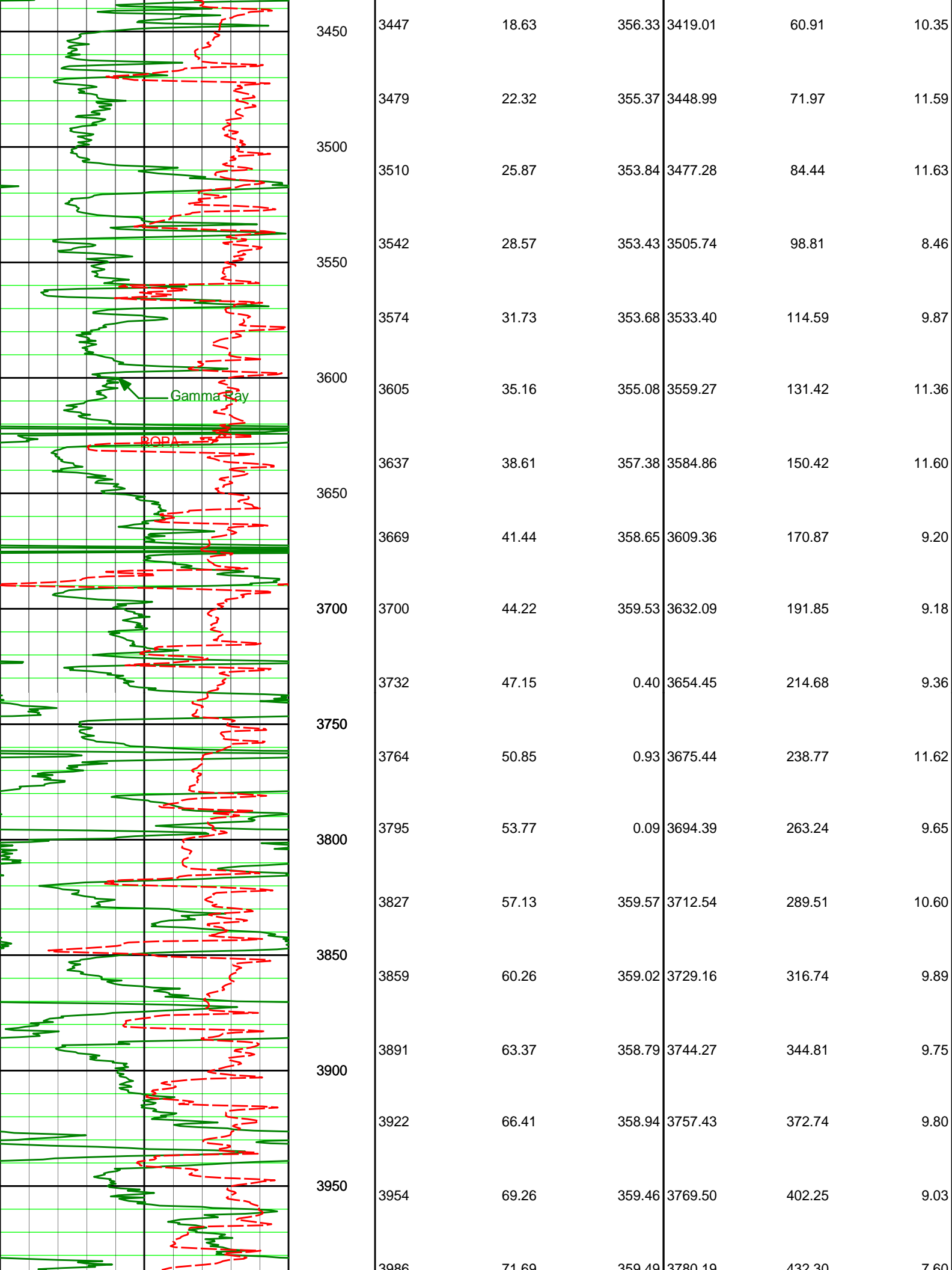


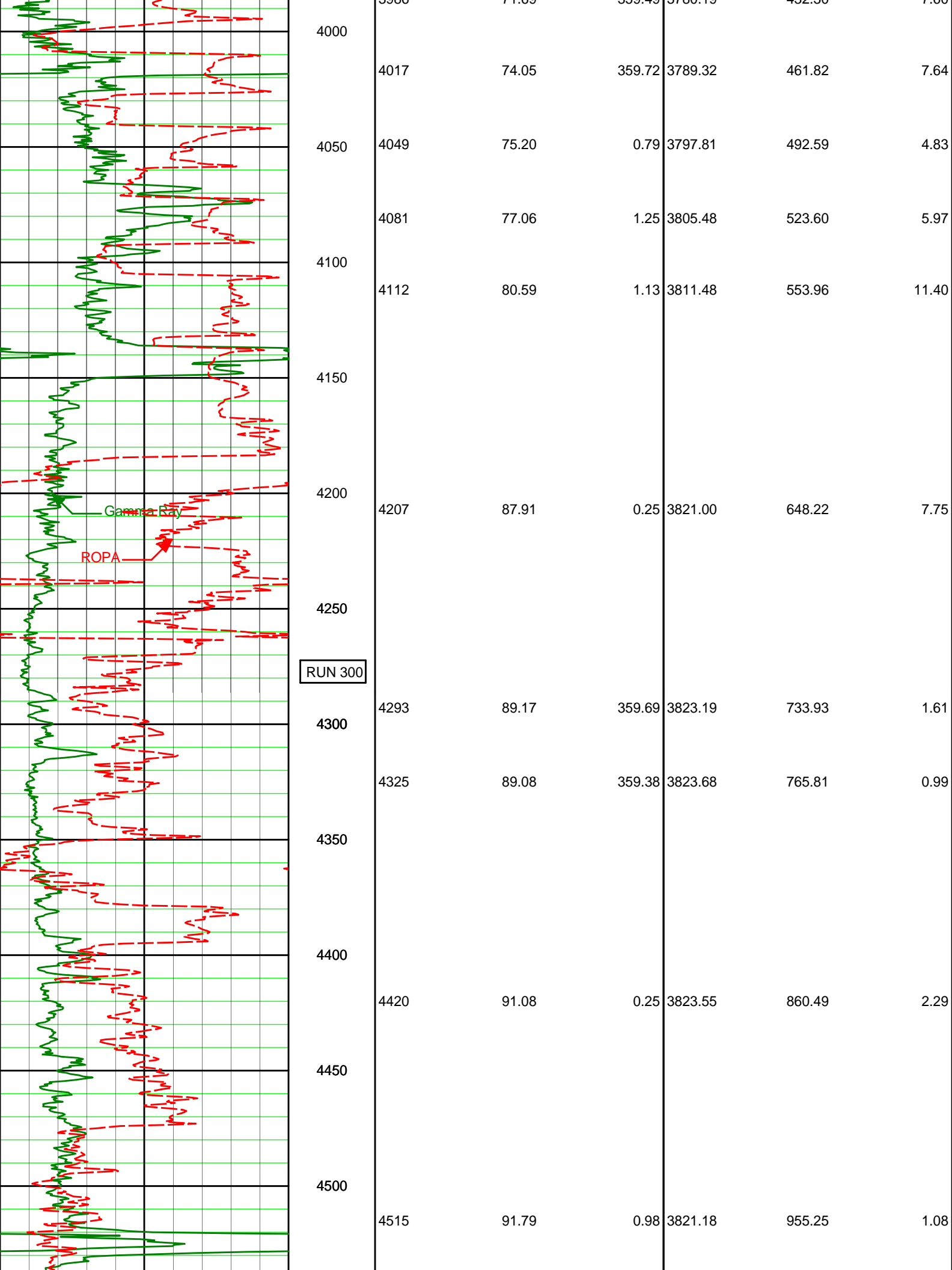


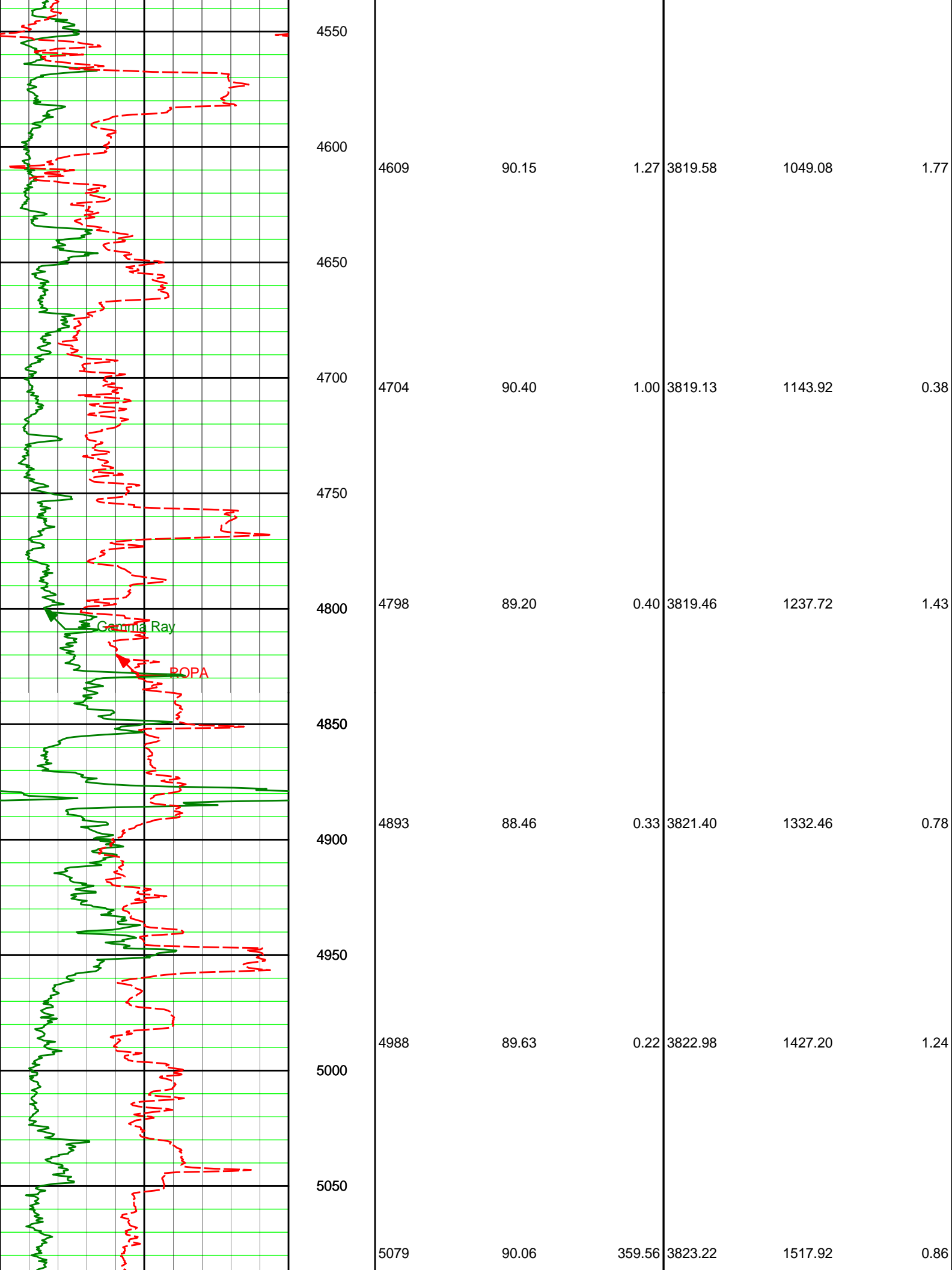


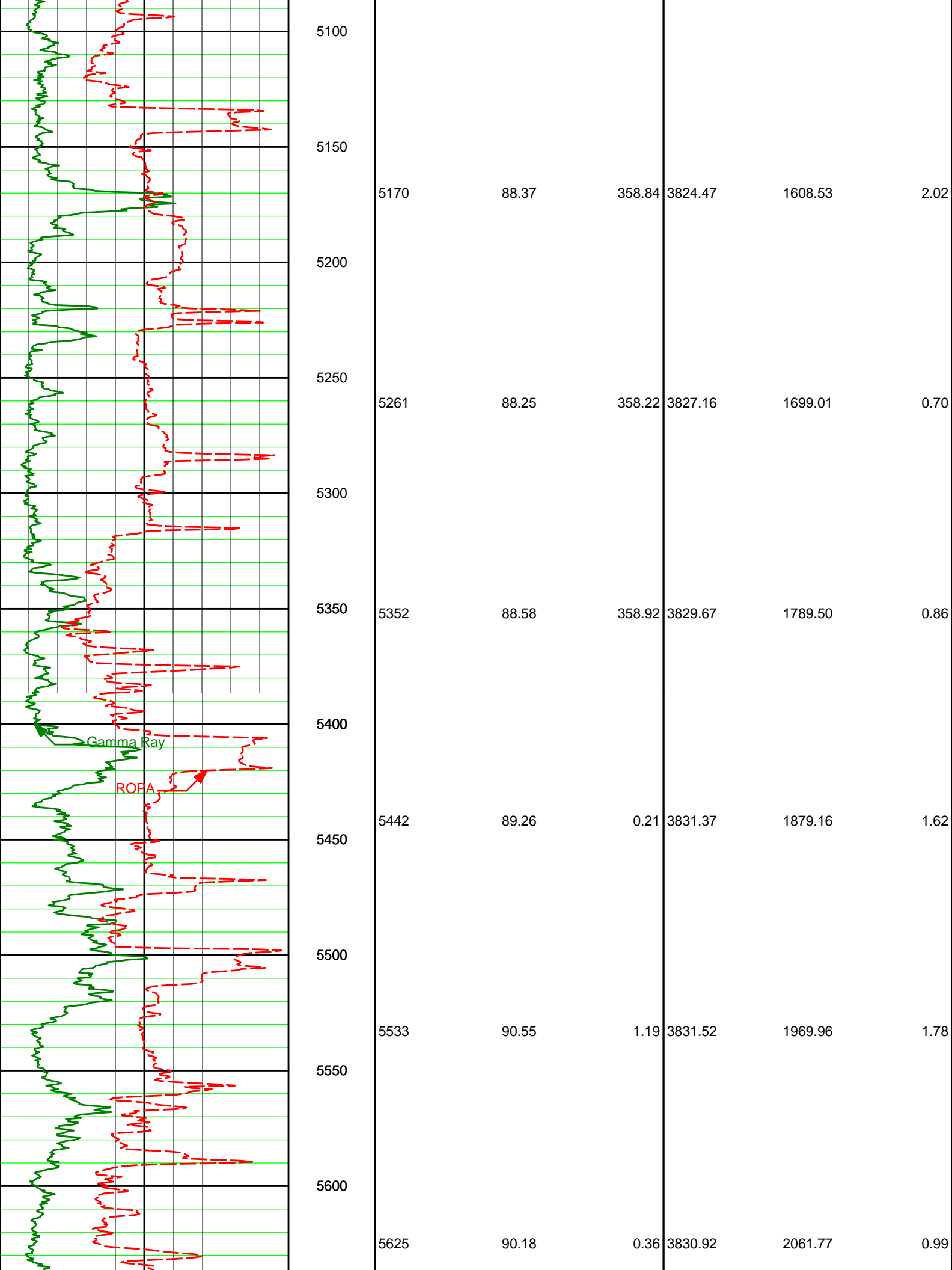


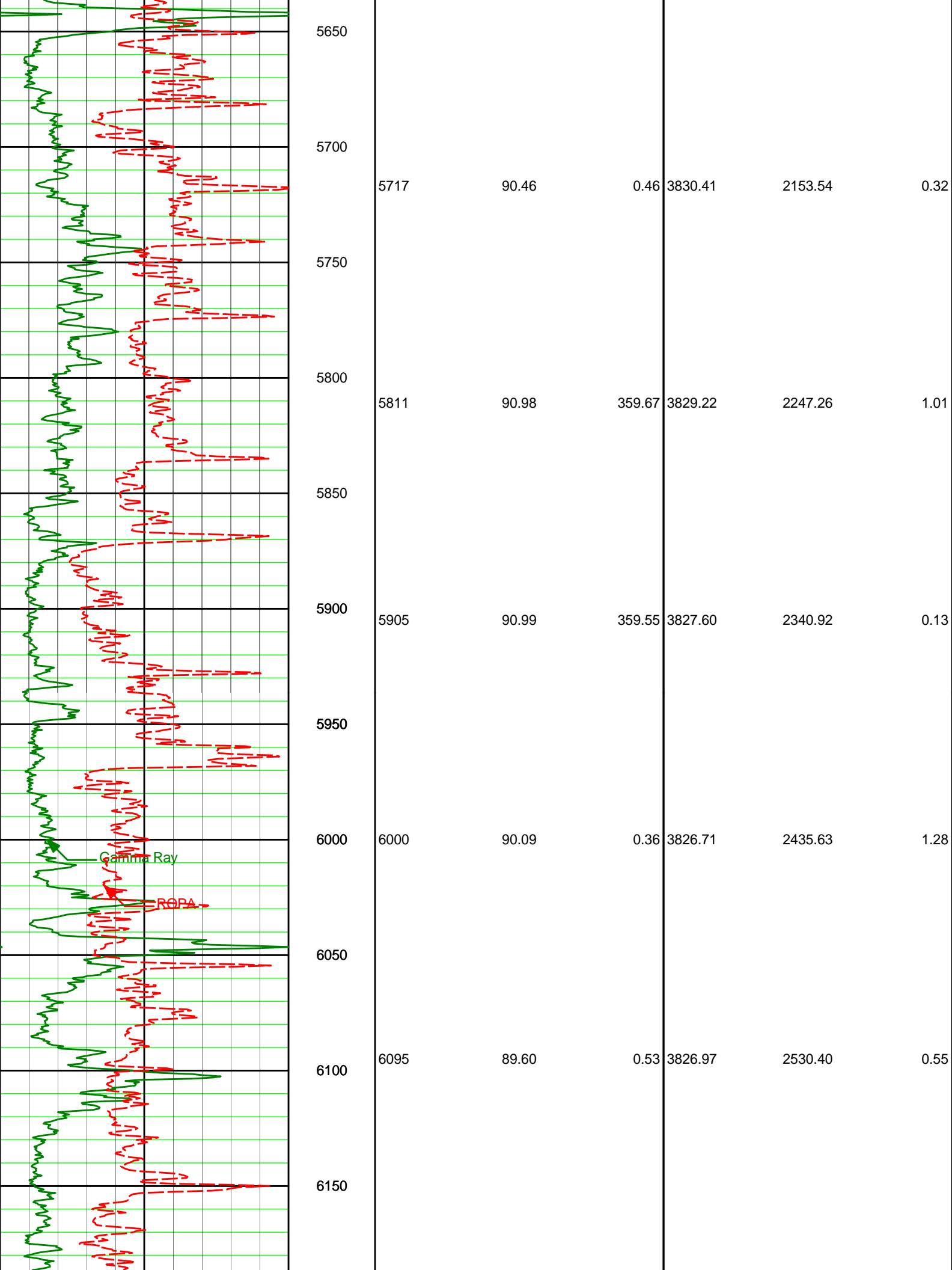


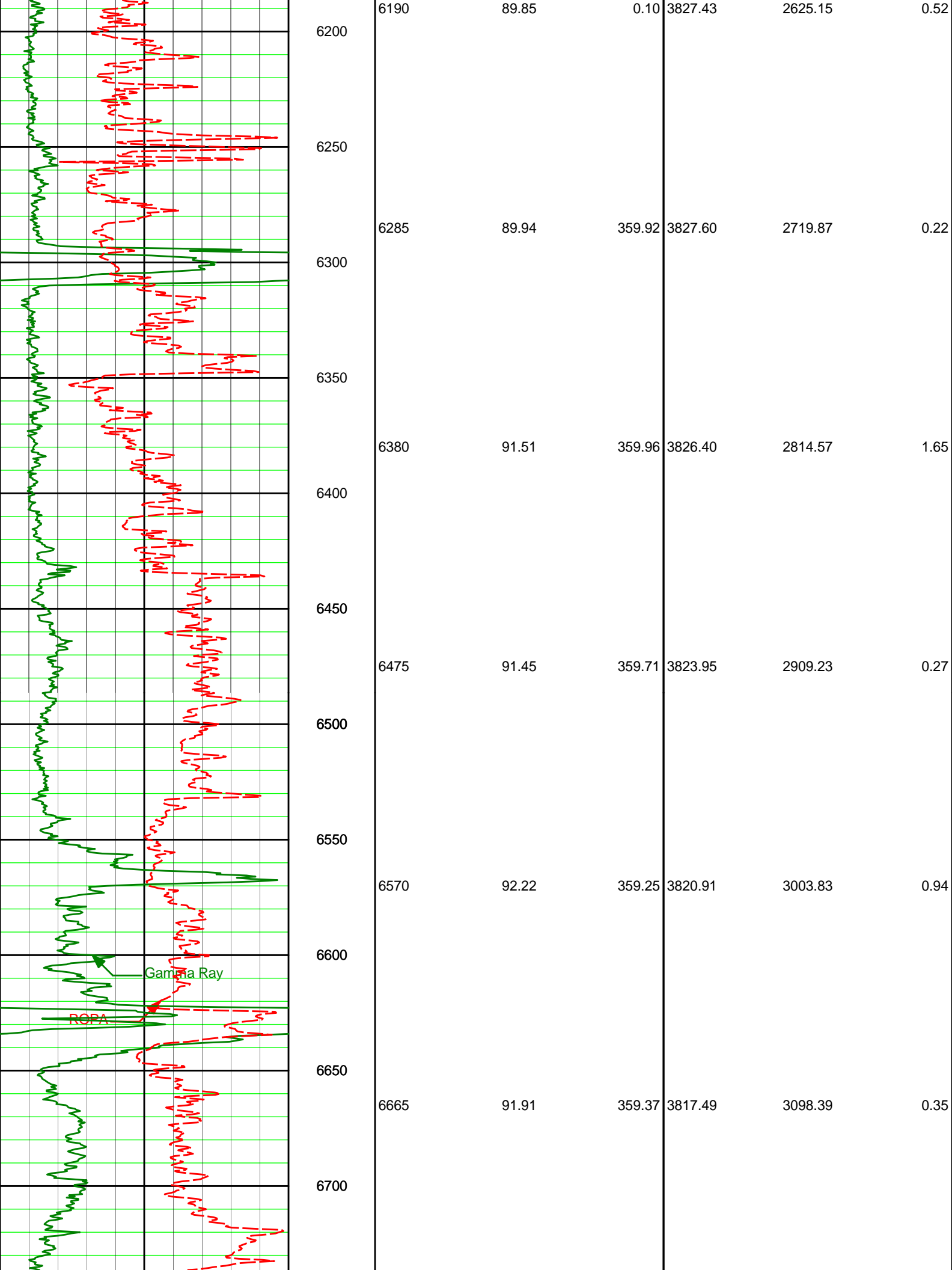


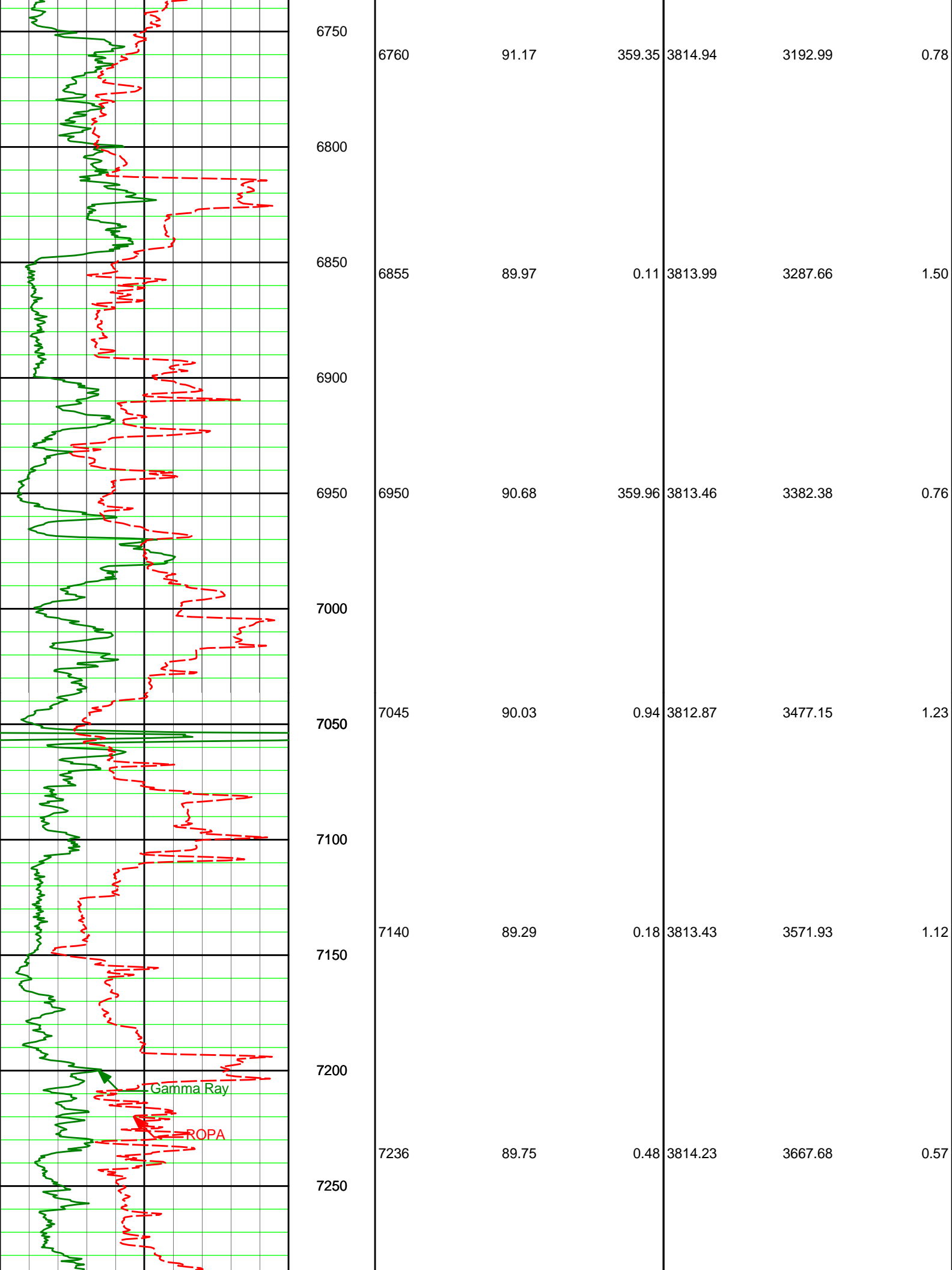


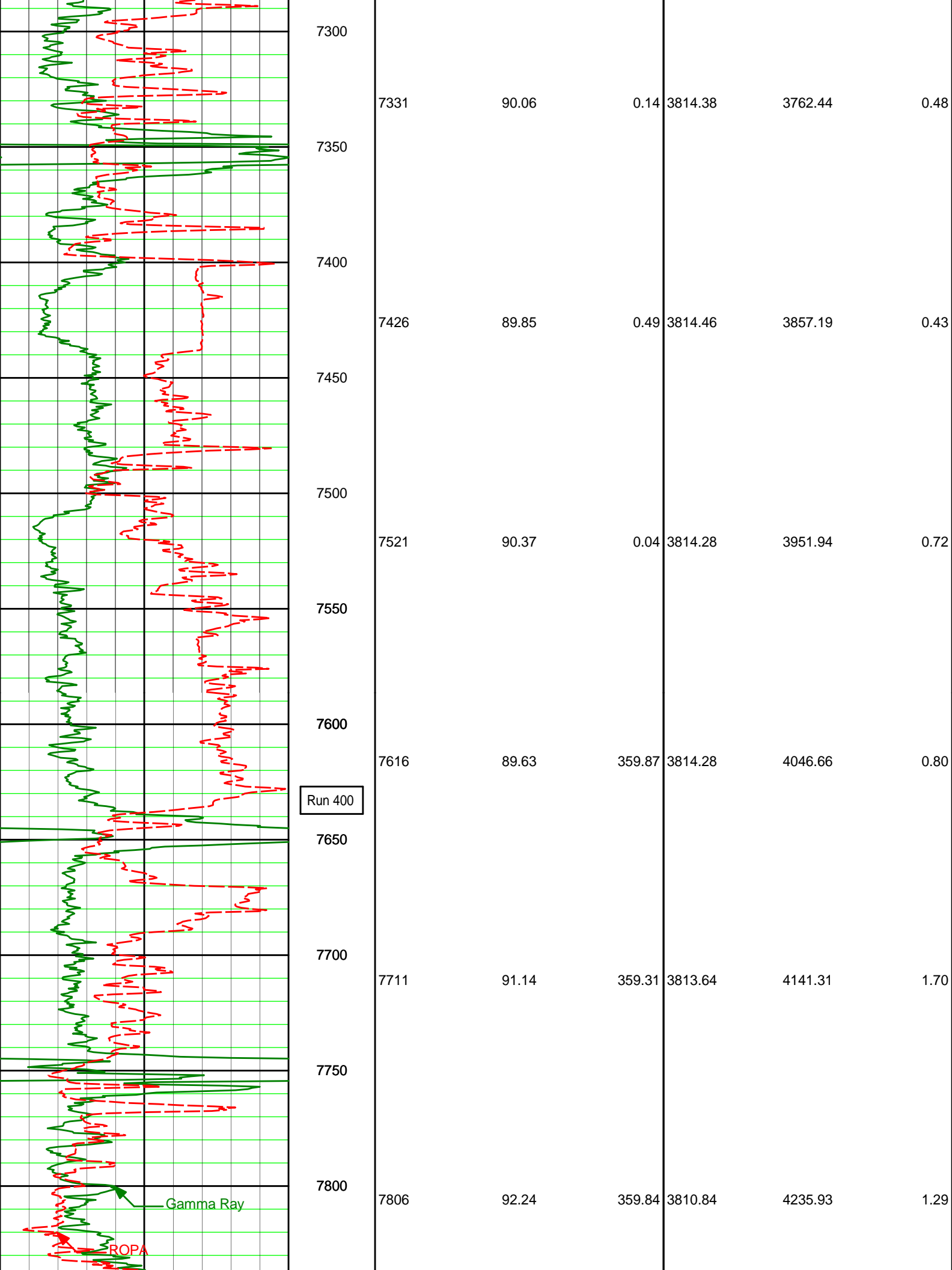


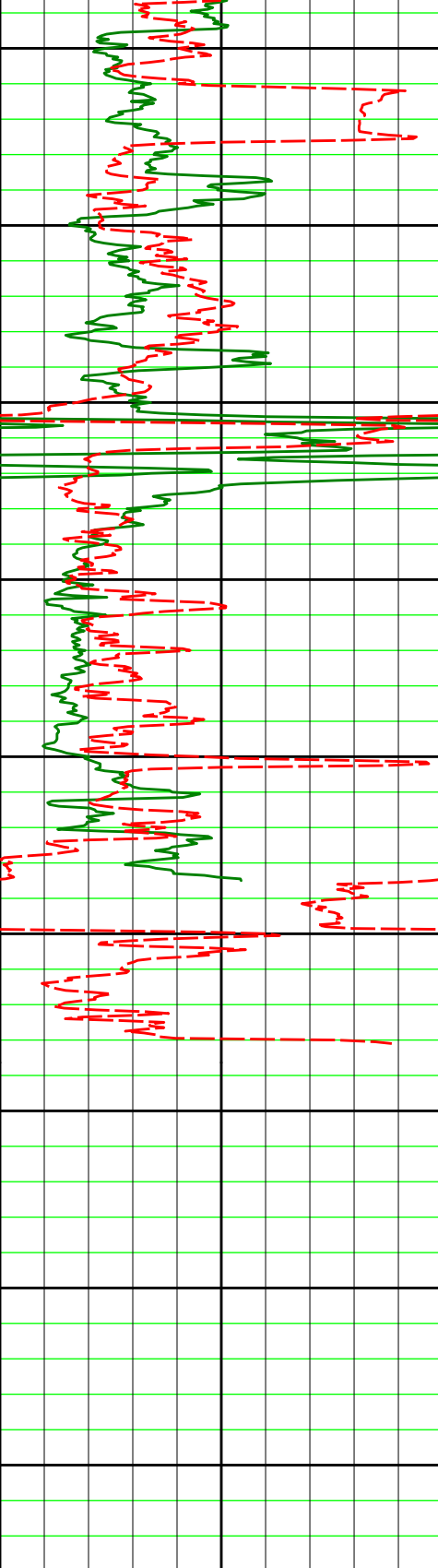










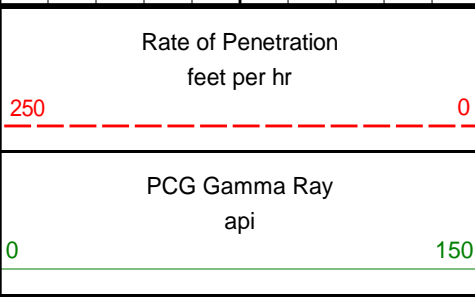


7850
7900
7950
8000
8050
8100
8150
8200
8250

7901	90.61	0.13	3808.47	4330.61	1.74
7996	90.18	359.62	3807.81	4425.31	0.70
8076	90.46	359.22	3807.36	4505.01	0.62
8130	90.46	359.22	3806.92	4558.78	0.01

Final Survey @ 8130'MD
is a projection to the bit.

TD



MD
ft
1 : 600

Surveys			Surveys		
Depth	Inclination	Azimuth	TVD	Vertical Sec	Dogleg Sev



HALLIBURTON

DIRECTIONAL SURVEY REPORT

Shell Exploration Production
 Young Trust 2309 35-1H
 Wildcat
 Reno Co Kansas
 USA

OK-XX-0900034106

Surveys from 141' MD to 8130' MD provided by Halliburton Sperry Drilling Services.
 Final Survey @ 8130' MD is a projection to the bit.

Measured Depth (feet)	Inclination (degrees)	Direction (degrees)	Vertical Depth (feet)	Latitude (feet)	Departure (feet)	Vertical Section (feet)	Dogleg (deg/100ft)
0.00	0.00	0.00	0.00	0.00 N	0.00 E	0.00	TIE-IN
141.00	0.14	121.22	141.00	0.09 S	0.15 E	-0.08	0.10
171.00	0.28	79.43	171.00	0.09 S	0.25 E	-0.07	0.68
232.00	0.69	100.38	232.00	0.13 S	0.76 E	-0.07	0.71
286.00	0.71	119.06	285.99	0.35 S	1.37 E	-0.25	0.42
368.00	1.66	133.76	367.98	1.42 S	2.67 E	-1.21	1.21
432.00	3.90	119.74	431.90	3.14 S	5.23 E	-2.73	3.63
527.00	7.12	98.90	526.45	5.66 S	13.86 E	-4.57	3.94
622.00	9.63	93.09	620.43	6.99 S	27.61 E	-4.85	2.78
717.00	9.36	91.64	714.13	7.64 S	43.26 E	-4.29	0.38
812.00	8.81	91.67	807.94	8.08 S	58.25 E	-3.56	0.58
907.00	8.48	92.30	901.86	8.57 S	72.53 E	-2.96	0.36
1002.00	8.80	93.41	995.78	9.29 S	86.78 E	-2.57	0.37
1093.00	7.98	89.13	1085.81	9.60 S	100.05 E	-1.86	1.12
1184.00	7.83	90.15	1175.94	9.52 S	112.57 E	-0.82	0.23
1275.00	8.44	91.18	1266.03	9.68 S	125.44 E	0.02	0.68
1366.00	8.90	90.85	1355.99	9.92 S	139.16 E	0.83	0.52
1457.00	8.28	80.61	1445.97	8.96 S	152.66 E	2.84	1.81
1548.00	8.08	82.10	1536.05	7.01 S	165.45 E	5.76	0.32
1640.00	8.35	81.55	1627.10	5.14 S	178.47 E	8.63	0.31
1733.00	8.59	80.48	1719.09	2.99 S	192.01 E	11.81	0.31
1833.00	8.04	88.11	1818.04	1.53 S	206.37 E	14.38	1.23
1927.00	8.10	89.64	1911.11	1.27 S	219.56 E	15.65	0.24
2022.00	8.23	88.57	2005.14	1.06 S	233.05 E	16.91	0.21
2117.00	7.80	91.38	2099.22	1.04 S	246.30 E	17.94	0.61
2212.00	7.87	92.96	2193.33	1.53 S	259.25 E	18.45	0.24
2307.00	6.87	91.64	2287.54	2.03 S	271.43 E	18.89	1.07
2402.00	6.40	90.75	2381.90	2.27 S	282.40 E	19.50	0.50
2497.00	6.43	80.32	2476.31	1.44 S	292.94 E	21.14	1.23
2592.00	7.74	80.94	2570.59	0.46 N	304.50 E	23.93	1.38
2687.00	7.63	81.26	2664.73	2.43 N	317.05 E	26.85	0.12
2782.00	7.83	81.73	2758.87	4.32 N	329.70 E	29.71	0.22
2877.00	6.93	88.93	2853.08	5.35 N	341.83 E	31.68	1.36
2972.00	5.22	100.37	2947.55	4.68 N	351.82 E	31.78	2.20
3067.00	3.20	107.14	3042.29	3.12 N	358.61 E	30.75	2.18
3162.00	1.02	107.98	3137.22	2.08 N	361.95 E	29.97	2.30
3193.00	1.01	84.83	3168.21	2.02 N	362.49 E	29.95	1.32
3225.00	0.95	78.61	3200.21	2.10 N	363.03 E	30.07	0.39
3257.00	2.01	31.06	3232.20	2.63 N	363.58 E	30.64	4.79
3289.00	3.87	13.24	3264.15	4.16 N	364.12 E	32.21	6.41
3320.00	5.90	2.33	3295.04	6.77 N	364.42 E	34.83	7.17
3352.00	8.35	0.13	3326.79	10.73 N	364.49 E	38.79	7.72
3384.00	11.91	358.67	3358.29	16.36 N	364.42 E	44.40	11.16
3415.00	15.32	357.30	3388.41	23.65 N	364.16 E	51.65	11.05
3447.00	18.63	356.33	3419.01	32.98 N	363.63 E	60.91	10.35
3479.00	22.32	355.37	3448.99	44.14 N	362.81 E	71.97	11.59
3510.00	25.87	353.84	3477.28	56.74 N	361.61 E	84.44	11.63
3542.00	28.57	353.43	3505.74	71.28 N	359.98 E	98.81	8.46
3574.00	31.73	353.68	3533.40	87.25 N	358.18 E	114.59	9.87
3605.00	35.16	355.08	3559.27	104.25 N	356.52 E	131.42	11.36
3637.00	38.61	357.38	3584.86	123.41 N	355.27 E	150.42	11.60
3669.00	41.44	358.65	3609.36	143.98 N	354.56 E	170.87	9.20
3700.00	44.22	359.53	3632.09	165.04 N	354.23 E	191.85	9.18
3732.00	47.15	0.40	3654.45	187.94 N	354.23 E	214.68	9.36
3764.00	50.05	0.33	3675.14	210.83 N	354.23 E	238.57	9.88
3796.00	52.95	0.26	3695.83	233.72 N	354.23 E	262.46	10.40
3828.00	55.85	0.19	3716.52	256.61 N	354.23 E	286.35	10.92
3860.00	58.75	0.12	3737.21	279.50 N	354.23 E	310.24	11.44
3892.00	61.65	0.05	3757.90	302.39 N	354.23 E	334.13	11.96
3924.00	64.55	0.08	3778.59	325.28 N	354.23 E	358.02	12.48
3956.00	67.45	0.21	3799.28	348.17 N	354.23 E	381.91	13.00
3988.00	70.35	0.34	3819.97	371.06 N	354.23 E	405.80	13.52
4020.00	73.25	0.47	3840.66	393.95 N	354.23 E	429.69	14.04
4052.00	76.15	0.60	3861.35	416.84 N	354.23 E	453.58	14.56
4084.00	79.05	0.73	3882.04	439.73 N	354.23 E	477.47	15.08
4116.00	81.95	0.86	3902.73	462.62 N	354.23 E	501.36	15.60
4148.00	84.85	1.00	3923.42	485.51 N	354.23 E	525.25	16.12
4180.00	87.75	1.13	3944.11	508.40 N	354.23 E	549.14	16.64
4212.00	90.65	1.26	3964.80	531.29 N	354.23 E	573.03	17.16
4244.00	93.55	1.39	3985.49	554.18 N	354.23 E	596.92	17.68
4276.00	96.45	1.52	4006.18	577.07 N	354.23 E	620.81	18.20
4308.00	99.35	1.65	4026.87	600.00 N	354.23 E	644.70	18.72
4340.00	102.25	1.78	4047.56	622.89 N	354.23 E	668.59	19.24
4372.00	105.15	1.91	4068.25	645.78 N	354.23 E	692.48	19.76
4404.00	108.05	2.04	4088.94	668.67 N	354.23 E	716.37	20.28
4436.00	110.95	2.17	4109.63	691.56 N	354.23 E	740.26	20.80
4468.00	113.85	2.30	4130.32	714.45 N	354.23 E	764.15	21.32
4500.00	116.75	2.43	4151.01	737.34 N	354.23 E	788.04	21.84
4532.00	119.65	2.56	4171.70	760.23 N	354.23 E	811.93	22.36
4564.00	122.55	2.69	4192.39	783.12 N	354.23 E	835.82	22.88
4596.00	125.45	2.82	4213.08	806.01 N	354.23 E	859.71	23.40
4628.00	128.35	2.95	4233.77	828.90 N	354.23 E	883.60	23.92
4660.00	131.25	3.08	4254.46	851.79 N	354.23 E	907.49	24.44
4692.00	134.15	3.21	4275.15	874.68 N	354.23 E	931.38	24.96
4724.00	137.05	3.34	4295.84	897.57 N	354.23 E	955.27	25.48
4756.00	139.95	3.47	4316.53	920.46 N	354.23 E	979.16	26.00
4788.00	142.85	3.60	4337.22	943.35 N	354.23 E	1003.05	26.52
4820.00	145.75	3.73	4357.91	966.24 N	354.23 E	1026.94	27.04
4852.00	148.65	3.86	4378.60	989.13 N	354.23 E	1050.83	27.56
4884.00	151.55	3.99	4399.29	1012.02 N	354.23 E	1074.72	28.08
4916.00	154.45	4.12	4419.98	1034.91 N	354.23 E	1098.61	28.60
4948.00	157.35	4.25	4440.67	1057.80 N	354.23 E	1122.50	29.12
4980.00	160.25	4.38	4461.36	1080.69 N	354.23 E	1146.39	29.64
5012.00	163.15	4.51	4482.05	1103.58 N	354.23 E	1170.28	30.16
5044.00	166.05	4.64	4502.74	1126.47 N	354.23 E	1194.17	30.68
5076.00	168.95	4.77	4523.43	1149.36 N	354.23 E	1218.06	31.20
5108.00	171.85	4.90	4544.12	1172.25 N	354.23 E	1241.95	31.72
5140.00	174.75	5.03	4564.81	1195.14 N	354.23 E	1265.84	32.24
5172.00	177.65	5.16	4585.50	1218.03 N	354.23 E	1289.73	32.76
5204.00	180.55	5.29	4606.19	1240.92 N	354.23 E	1313.62	33.28
5236.00	183.45	5.42	4626.88	1263.81 N	354.23 E	1337.51	33.80
5268.00	186.35	5.55	4647.57	1286.70 N	354.23 E	1361.40	34.32
5300.00	189.25	5.68	4668.26	1309.59 N	354.23 E	1385.29	34.84
5332.00	192.15	5.81	4688.95	1332.48 N	354.23 E	1409.18	35.36
5364.00	195.05	5.94	4709.64	1355.37 N	354.23 E	1433.07	35.88
5396.00	197.95	6.07	4730.33	1378.26 N	354.23 E	1456.96	36.40
5428.00	200.85	6.20	4751.02	1401.15 N	354.23 E	1480.85	36.92
5460.00	203.75	6.33	4771.71	1424.04 N	354.23 E	1504.74	37.44
5492.00	206.65	6.46	4792.40	1446.93 N	354.23 E	1528.63	37.96
5524.00	209.55	6.59	4813.09	1469.82 N	354.23 E	1552.52	38.48
5556.00	212.45	6.72	4833.78	1492.71 N	354.23 E	1576.41	39.00
5588.00	215.35	6.85	4854.47	1515.60 N	354.23 E	1600.30	39.52
5620.00	218.25	6.98	4875.16	1538.49 N	354.23 E	1624.19	40.04
5652.00	221.15	7.11	4895.85	1561.38 N	354.23 E	1648.08	40.56
5684.00	224.05	7.24	4916.54	1584.27 N	354.23 E	1671.97	41.08
5716.00	226.95	7.37	4937.23	1607.16 N	354.23 E	1695.86	41.60
5748.00	229.85	7.50	4957.92	1630.05 N	354.23 E	1719.75	42.12
5780.00	232.75	7.63	4978.61	1652.94 N	354.23 E	1743.64	42.64
5812.00	235.65	7.76	4999.30	1675.83 N	354.23 E	1767.53	43.16
5844.00	238.55	7.89	5019.99	1698.72 N	354.23 E	1791.42	43.68
5876.00	241.45	8.02	5040.68	1721.61 N	354.23 E	1815.31	44.20
5908.00	244.35	8.15	5061.37	1744.50 N	354.23 E	1839.20	44.72
5940.00	247.25	8.28	5082.06	1767.39 N	354.23 E	1863.09	45.24
5972.00	250.15	8.41	5102.75	1790.28 N	354.23 E	1886.98	45.76
6004.00	253.05	8.54	5123.44	1813.17 N	354.23 E	1910.87	46.28
6036.00	255.95	8.67	5144.13	1836.06 N	354.23 E	1934.76	46.80
6068.00	258.85	8.80	5164.82	1858.95 N	354.23 E	1958.65	47.32
6100.00	261.75	8.93	5185.51	1881.84 N	354.23 E	1982.54	47.84
6132.00	264.65	9.06	5206.20	1904.73 N	354.23 E	2006.43	48.36

3764.00	50.85	0.93	3675.44	212.08 N	354.51 E	238.77	11.62
3795.00	53.77	0.09	3694.39	236.61 N	354.73 E	263.24	9.65
3827.00	57.13	359.57	3712.54	262.96 N	354.64 E	289.51	10.60
3859.00	60.26	359.02	3729.16	290.29 N	354.31 E	316.74	9.89
3891.00	63.37	358.79	3744.27	318.49 N	353.77 E	344.81	9.75
3922.00	66.41	358.94	3757.43	346.55 N	353.21 E	372.74	9.80
3954.00	69.26	359.46	3769.50	376.18 N	352.80 E	402.25	9.03
3986.00	71.69	359.49	3780.19	406.34 N	352.52 E	432.30	7.60
4017.00	74.05	359.72	3789.32	435.96 N	352.32 E	461.82	7.64
4049.00	75.20	0.79	3797.81	466.81 N	352.46 E	492.59	4.83
4081.00	77.06	1.25	3805.48	497.87 N	353.01 E	523.60	5.97
4112.00	80.59	1.13	3811.48	528.28 N	353.65 E	553.96	11.40
4207.00	87.91	0.25	3821.00	622.73 N	354.78 E	648.22	7.75
4293.00	89.17	359.69	3823.19	708.70 N	354.74 E	733.93	1.61
4325.00	89.08	359.38	3823.68	740.69 N	354.48 E	765.81	0.99
4420.00	91.08	0.25	3823.55	835.68 N	354.17 E	860.49	2.29
4515.00	91.79	0.98	3821.18	930.65 N	355.19 E	955.25	1.08
4609.00	90.15	1.27	3819.58	1024.61 N	357.03 E	1049.08	1.77
4704.00	90.40	1.00	3819.13	1119.59 N	358.90 E	1143.92	0.38
4798.00	89.20	0.40	3819.46	1213.58 N	360.04 E	1237.72	1.43
4893.00	88.46	0.33	3821.40	1308.56 N	360.65 E	1332.46	0.78
4988.00	89.63	0.22	3822.98	1403.55 N	361.10 E	1427.20	1.24
5079.00	90.06	359.56	3823.22	1494.54 N	360.93 E	1517.92	0.86
5170.00	88.37	358.84	3824.47	1585.52 N	359.66 E	1608.53	2.02
5261.00	88.25	358.22	3827.16	1676.45 N	357.33 E	1699.01	0.70
5352.00	88.58	358.92	3829.67	1767.39 N	355.06 E	1789.50	0.86
5442.00	89.26	0.21	3831.37	1857.37 N	354.38 E	1879.16	1.62
5533.00	90.55	1.19	3831.52	1948.36 N	355.50 E	1969.96	1.78
5625.00	90.18	0.36	3830.92	2040.35 N	356.74 E	2061.77	0.99
5717.00	90.46	0.46	3830.41	2132.34 N	357.40 E	2153.54	0.32
5811.00	90.98	359.67	3829.22	2226.33 N	357.50 E	2247.26	1.01
5905.00	90.99	359.55	3827.60	2320.32 N	356.86 E	2340.92	0.13
6000.00	90.09	0.36	3826.71	2415.31 N	356.78 E	2435.63	1.28
6095.00	89.60	0.53	3826.97	2510.31 N	357.52 E	2530.40	0.55
6190.00	89.85	0.10	3827.43	2605.31 N	358.05 E	2625.15	0.52
6285.00	89.94	359.92	3827.60	2700.31 N	358.06 E	2719.87	0.22
6380.00	91.51	359.96	3826.40	2795.30 N	357.96 E	2814.57	1.65
6475.00	91.45	359.71	3823.95	2890.26 N	357.69 E	2909.23	0.27
6570.00	92.22	359.25	3820.91	2985.21 N	356.83 E	3003.83	0.94
6665.00	91.91	359.37	3817.49	3080.14 N	355.68 E	3098.39	0.35
6760.00	91.17	359.35	3814.94	3175.10 N	354.62 E	3192.99	0.78
6855.00	89.97	0.11	3813.99	3270.09 N	354.18 E	3287.66	1.50
6950.00	90.68	359.96	3813.46	3365.09 N	354.24 E	3382.38	0.76
7045.00	90.03	0.94	3812.87	3460.08 N	354.99 E	3477.15	1.23
7140.00	89.29	0.18	3813.43	3555.08 N	355.91 E	3571.93	1.12
7236.00	89.75	0.48	3814.23	3651.07 N	356.46 E	3667.68	0.57
7331.00	90.06	0.14	3814.38	3746.07 N	356.97 E	3762.44	0.48
7426.00	89.85	0.49	3814.46	3841.07 N	357.49 E	3857.19	0.43
7521.00	90.37	0.04	3814.28	3936.07 N	357.94 E	3951.94	0.72
7616.00	89.63	359.87	3814.28	4031.06 N	357.87 E	4046.66	0.80
7711.00	91.14	359.31	3813.64	4126.06 N	357.19 E	4141.31	1.70
7806.00	92.24	359.84	3810.84	4221.01 N	356.49 E	4235.93	1.29
7901.00	90.61	0.13	3808.47	4315.98 N	356.46 E	4330.61	1.74
7996.00	90.18	359.62	3807.81	4410.98 N	356.26 E	4425.31	0.70
8076.00	90.46	359.22	3807.36	4490.97 N	355.45 E	4505.01	0.62
8130.00	90.46	359.22	3806.92	4544.96 N	354.71 E	4558.78	0.01

CALCULATION BASED ON MINIMUM CURVATURE METHOD

**SURVEY COORDINATES RELATIVE TO WELL SYSTEM REFERENCE POINT
TVD VALUES GIVEN RELATIVE TO DRILLING MEASUREMENT POINT**

**VERTICAL SECTION RELATIVE TO WELL HEAD
VERTICAL SECTION IS COMPUTED ALONG A DIRECTION OF 4.42 DEGREES (GRID)
A TOTAL CORRECTION OF 4.62 DEG FROM MAGNETIC NORTH TO GRID NORTH HAS BEEN APPLIED**

**HORIZONTAL DISPLACEMENT IS RELATIVE TO THE WELL HEAD.
HORIZONTAL DISPLACEMENT(CLOSURE) AT 8130.00 FEET
IS 4558.78 FEET ALONG 4.46 DEGREES (GRID)**