



**COMPLETION
& PRODUCTION
SERVICES CO.**

**SONIC
LOG**

Company L.D. DRILLING, INC.
Well LINN #1-9
Field WILDCAT
County NESS State KANSAS

Company L.D. DRILLING, INC.
Well LINN #1-9
Field WILDCAT
County NESS
State KANSAS

Location: API #: 15-135-25535
450' FSL & 2030' FWL
SEC 9 TWP 20S RGE 21W
GROUND LEVEL Elevation 2266
Log Measured From KELLY BUSHING 5' A.G.L.
Drilling Measured From KELLY BUSHING
Other Services
CNL/CDL
DIL/MEL
Elevation
K.B. 2271
D.F. 2269
G.L. 2266

| | | | |
|------------------------------|---------------|--------------------|--|
| Date | 2/16/13 | | |
| Run Number | TW0 | | |
| Depth Driller | 4562 | | |
| Depth Logger | 4564 | | |
| Bottom Logged Interval | 4464 | | |
| Top Log Interval | 650 | | |
| Casing Driller | 726 | | |
| Casing Logger | 724 | | |
| Bit Size | 7.875 | | |
| Type Fluid in Hole | CHEMICAL MUD | CHLORIDES 6000 PPM | |
| Density / Viscosity | 9.3 / 56 | | |
| pH / Fluid Loss | 9.0 / 10.8 | | |
| Source of Sample | FLOWLINE | | |
| Rim @ Meas. Temp | 0.5 @ 65F | | |
| Rmf @ Meas. Temp | 0.38 @ 65F | | |
| Rmc @ Meas. Temp | 0.65 @ 65F | | |
| Source of Rmf / Rmc | MEASURED | | |
| Rim @ BHT | 0.67 @ 121F | | |
| Time Circulation Stopped | 2 HOURS | | |
| Time Logger on Bottom | | | |
| Maximum Recorded Temperature | 121F | | |
| Equipment Number | 860 | | |
| Location | HAYS, KS. | | |
| Recorded By | IAN MABB | | |
| Witnessed By | KIM SHOEMAKER | | |

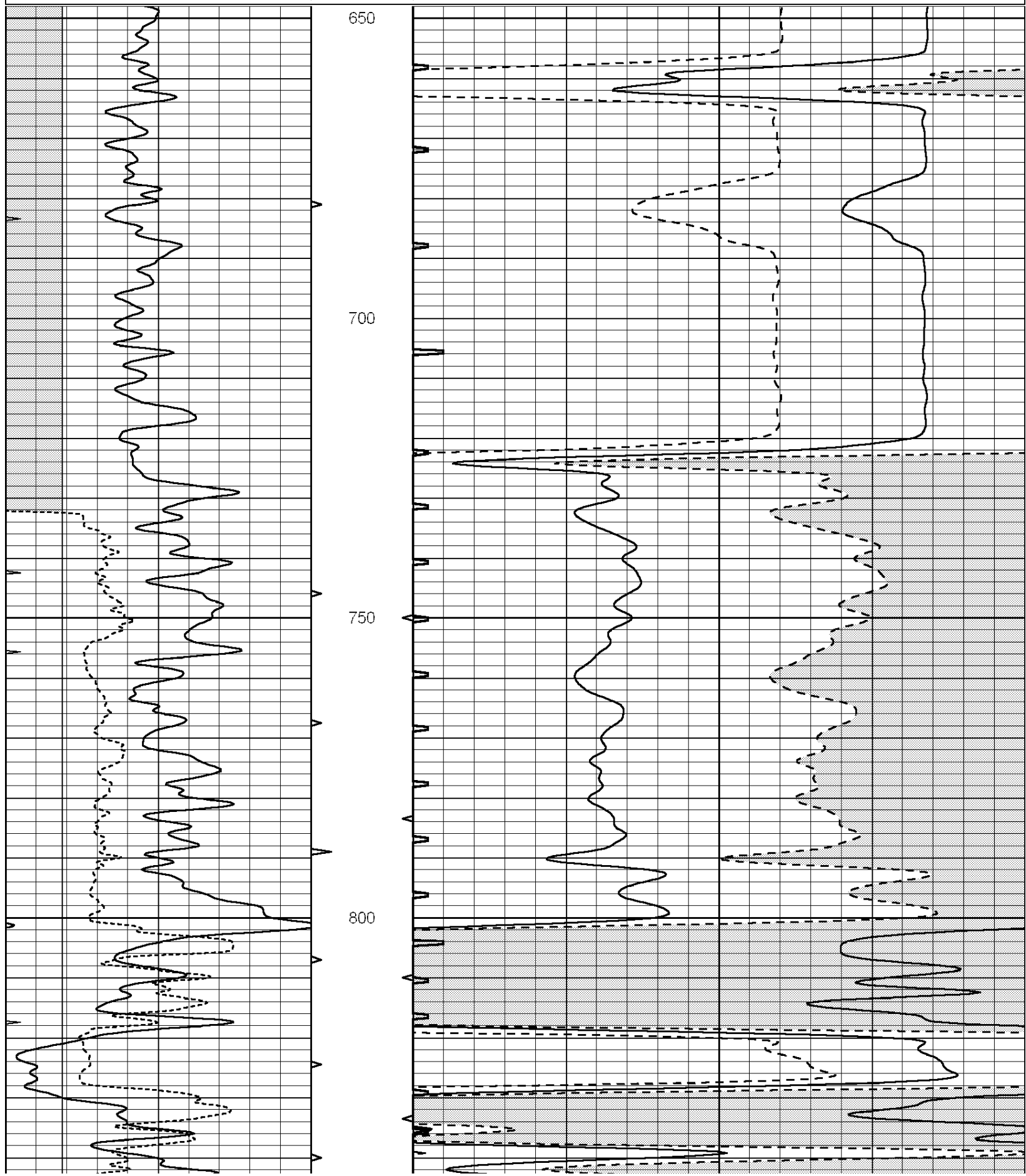
<<< Fold Here >>>

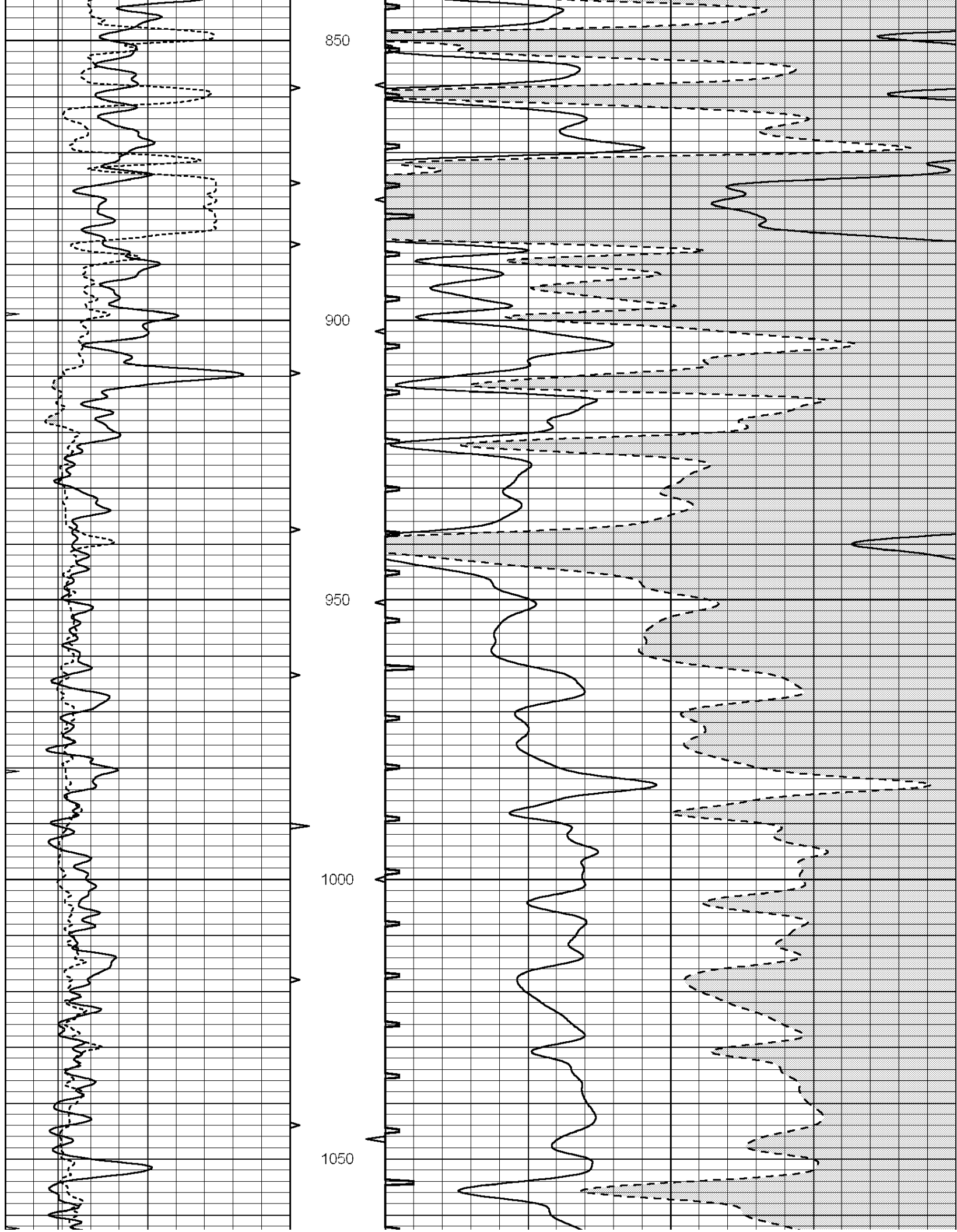
All interpretations are opinions based on inferences from electrical or other measurements and we cannot and do not guarantee the accuracy or correctness of any interpretation, and we shall not, except in the case of gross or willful negligence on our part, be liable or responsible for any loss, costs, damages, or expenses incurred or sustained by anyone resulting from any interpretation made by any of our officers, agents or employees. These interpretations are also subject to our general terms and conditions set out in our current Price Schedule.

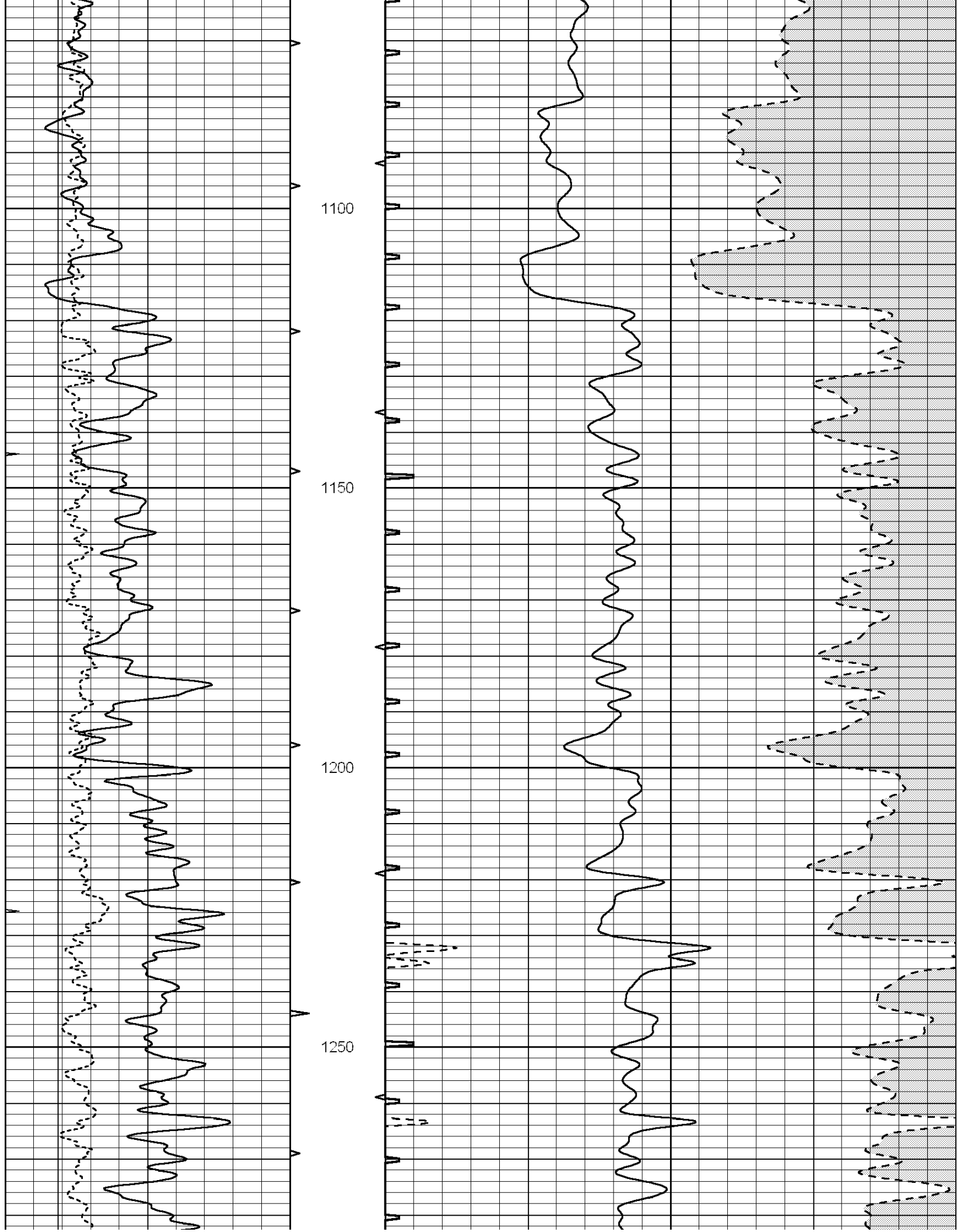
Comments

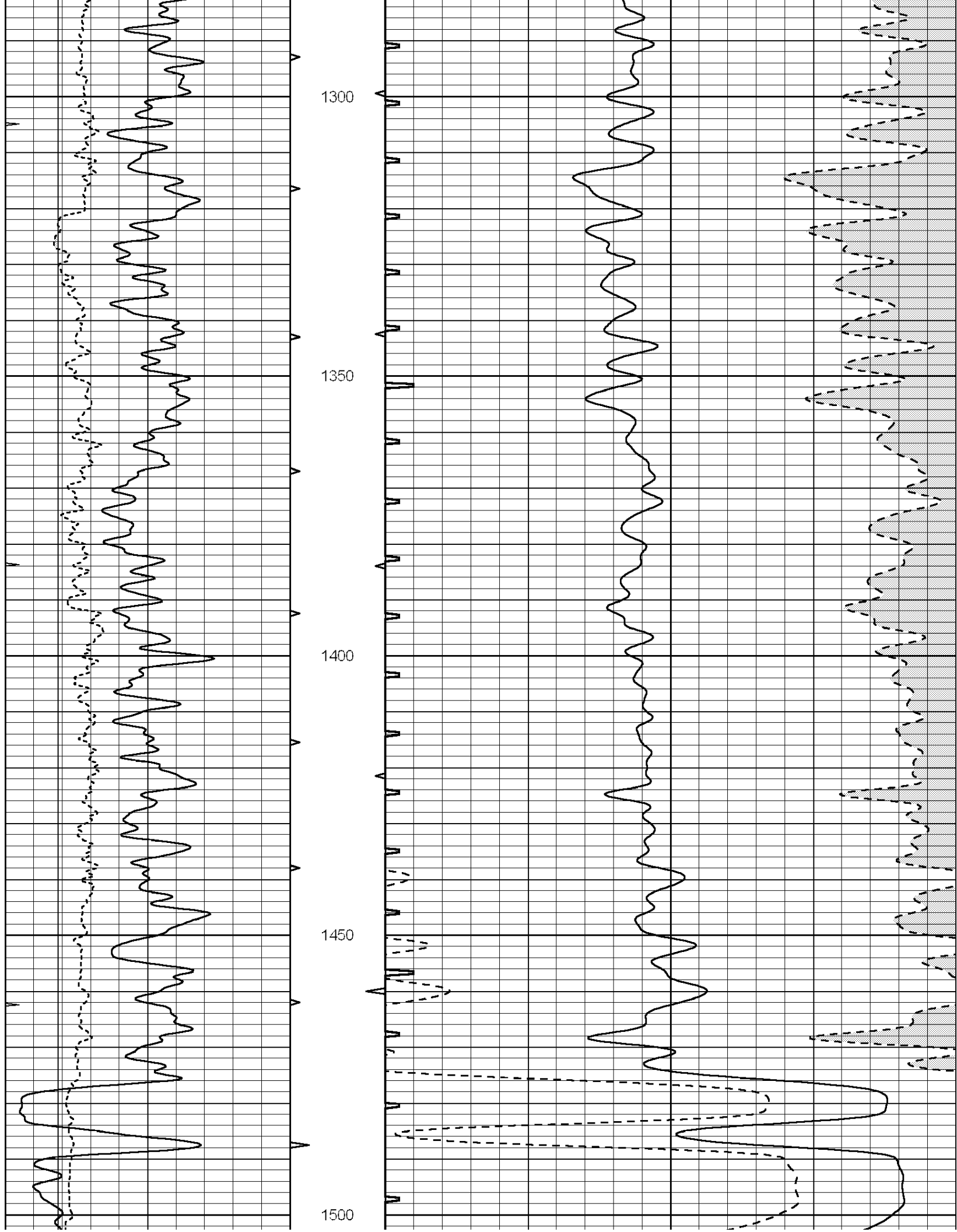
NABORS COMPLETION & PRODUCTION CO.
785-628-6395
THANK YOU FOR YOUR BUSINESS
DIRECTIONS:BAZINE, KS. - 2 MILES E TO RD GG - 9 MILES SOUTH - W 1/2 NORTH INTO

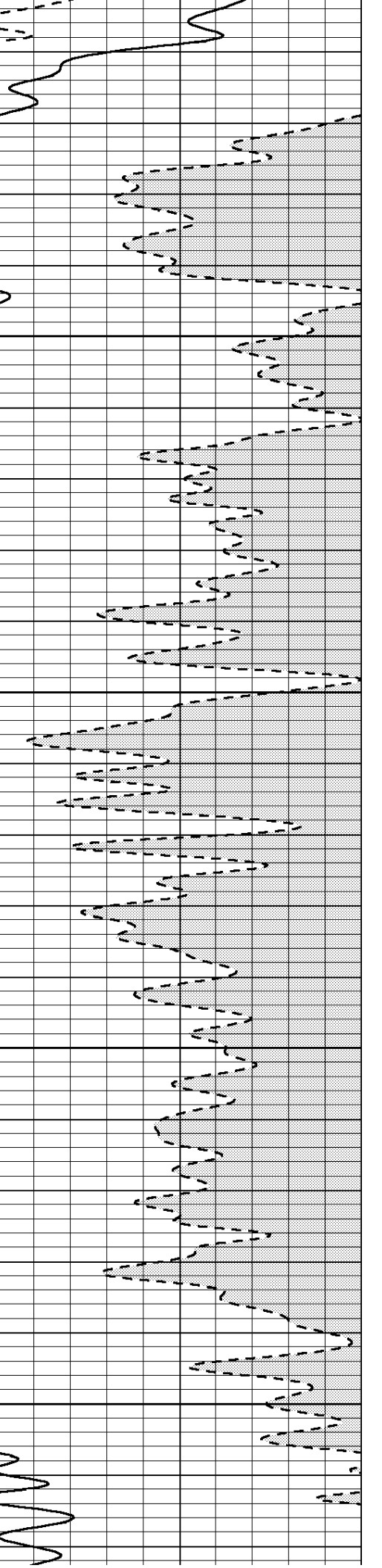
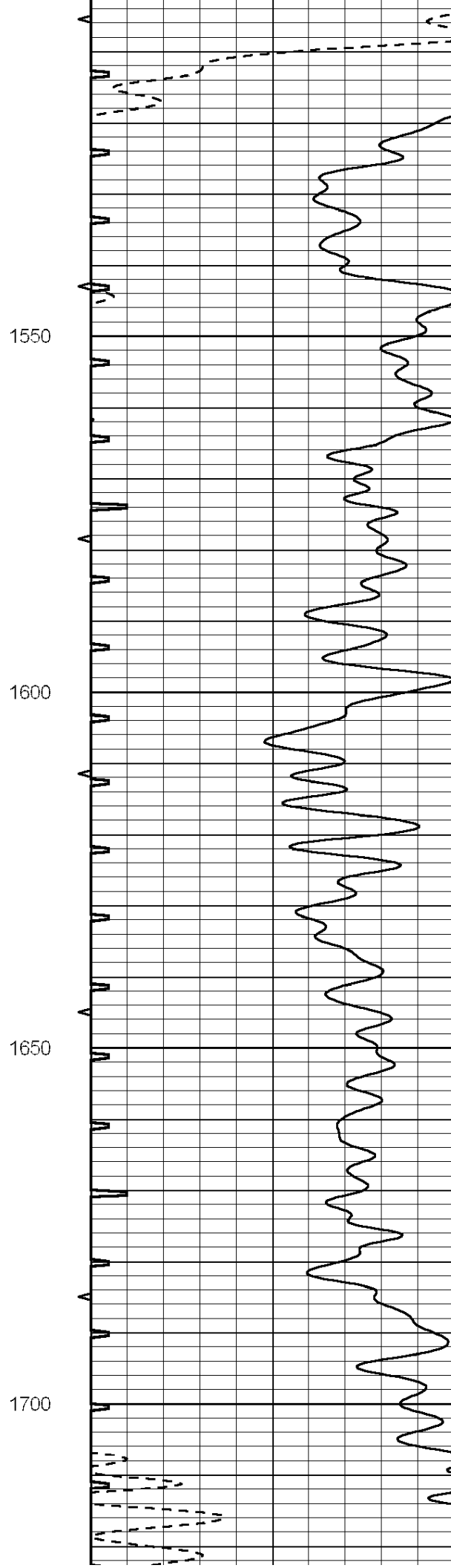
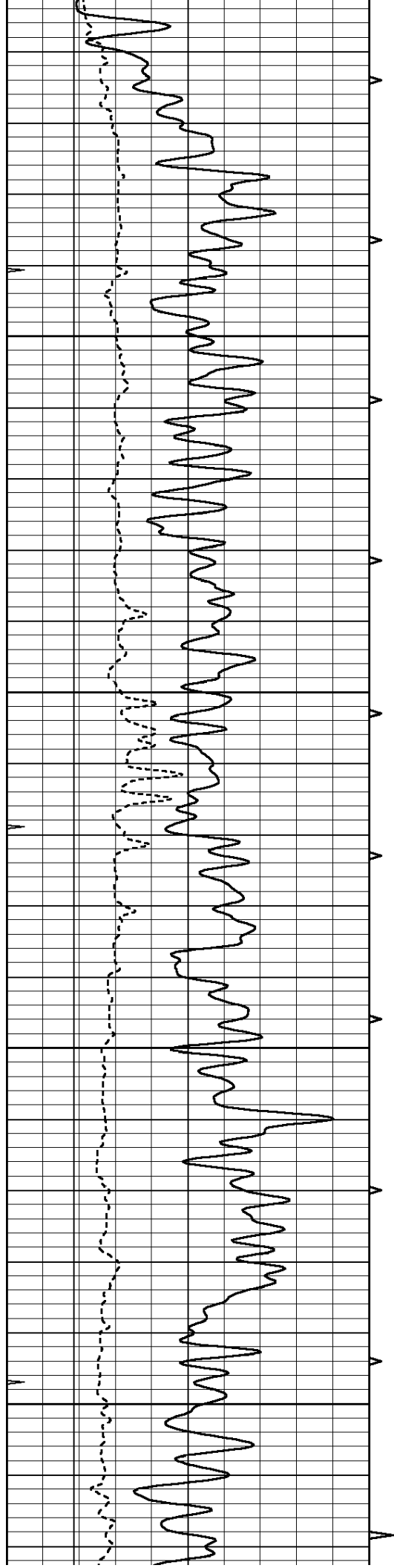
| | | | | | | |
|---|------------------|-----|----------|------|----------------------|-----|
| 0 | GAMMA RAY (GAPI) | 150 | ABHV | 140 | DELTA TIME (usec/ft) | 40 |
| 6 | MELCAL (in) | 16 | 10 (ft3) | 0 30 | SONIC POROSITY (pu) | -10 |
| 0 | MINMK | 20 | TBHV | 0 | ITT (msec) | 20 |
| | | | 0 (ft3) | 10 | | |

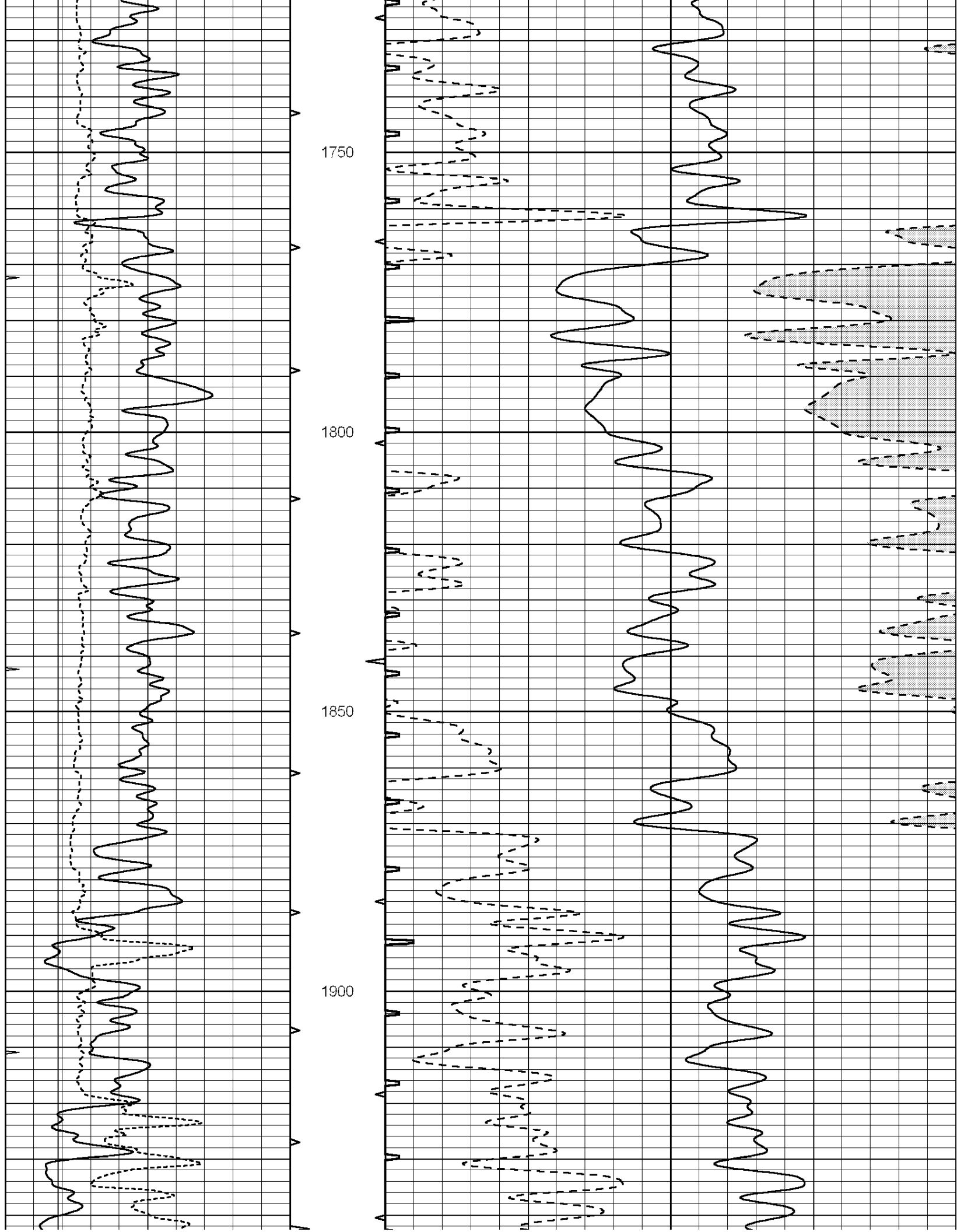


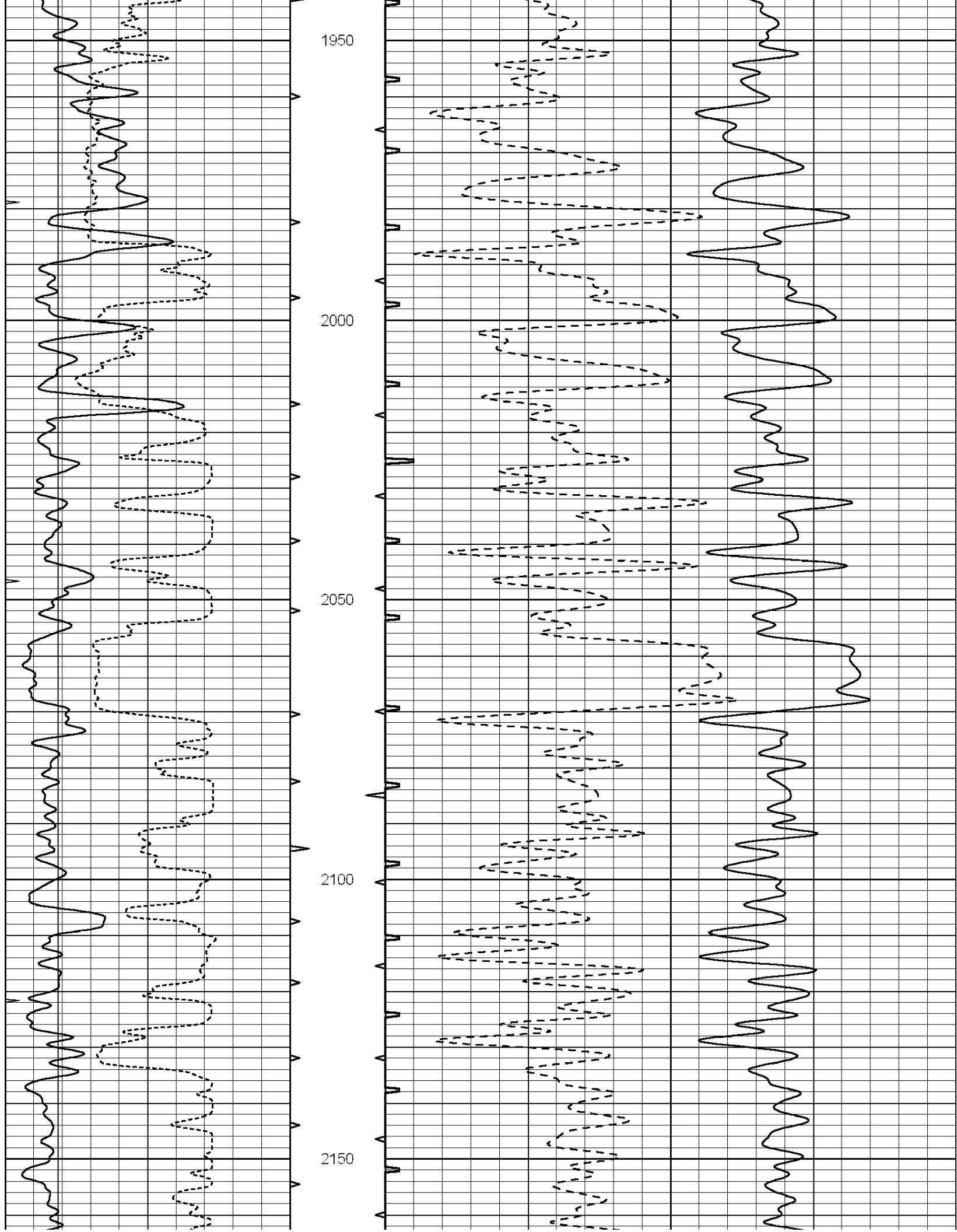


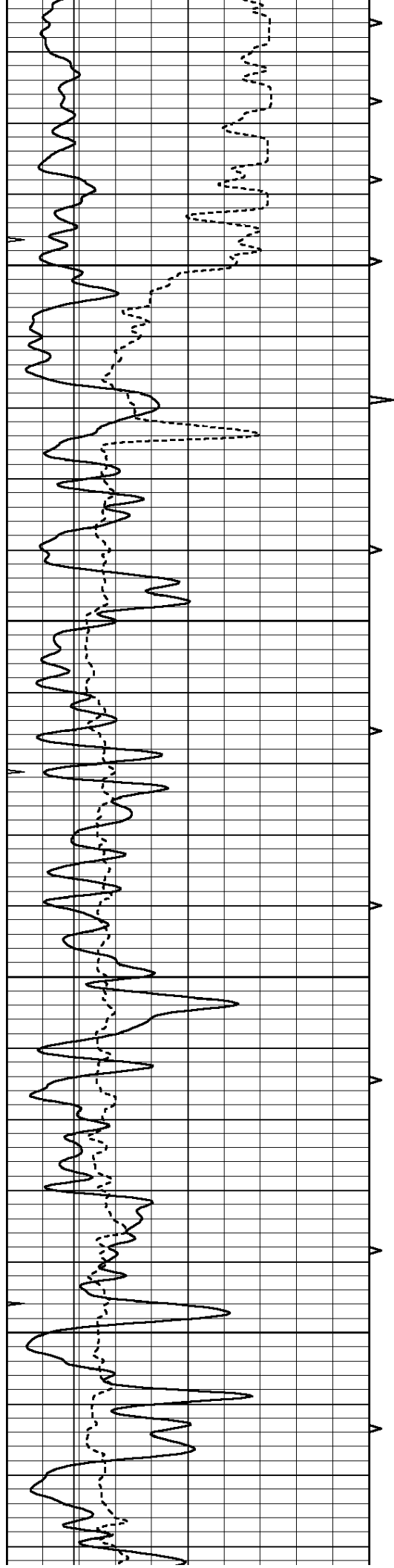










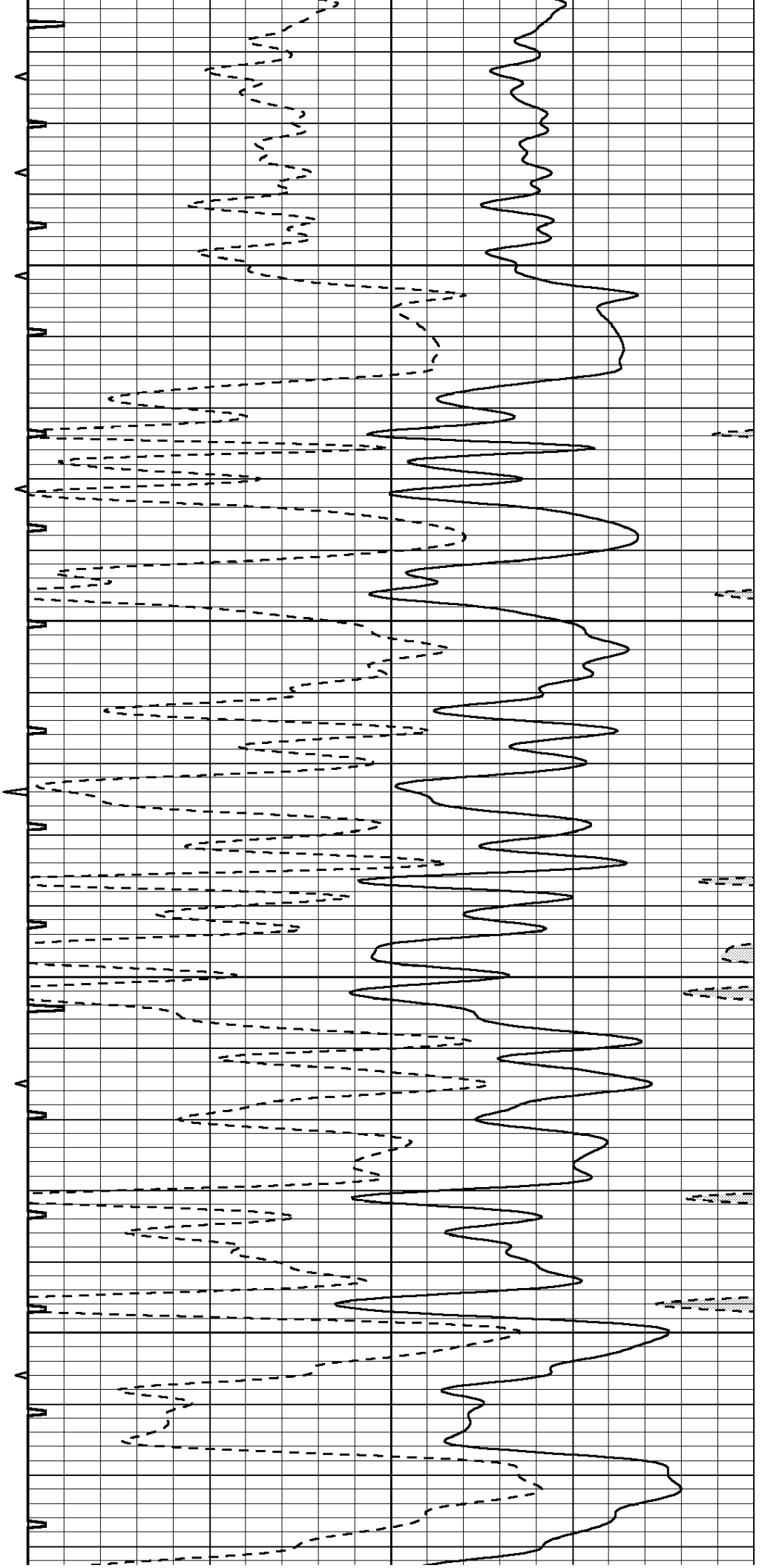


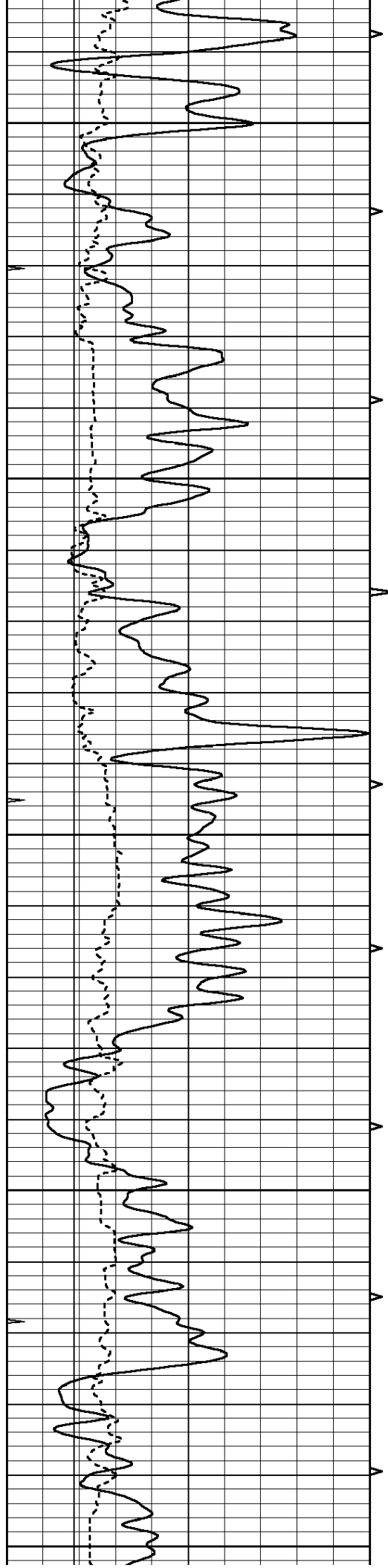
2200

2250

300

350





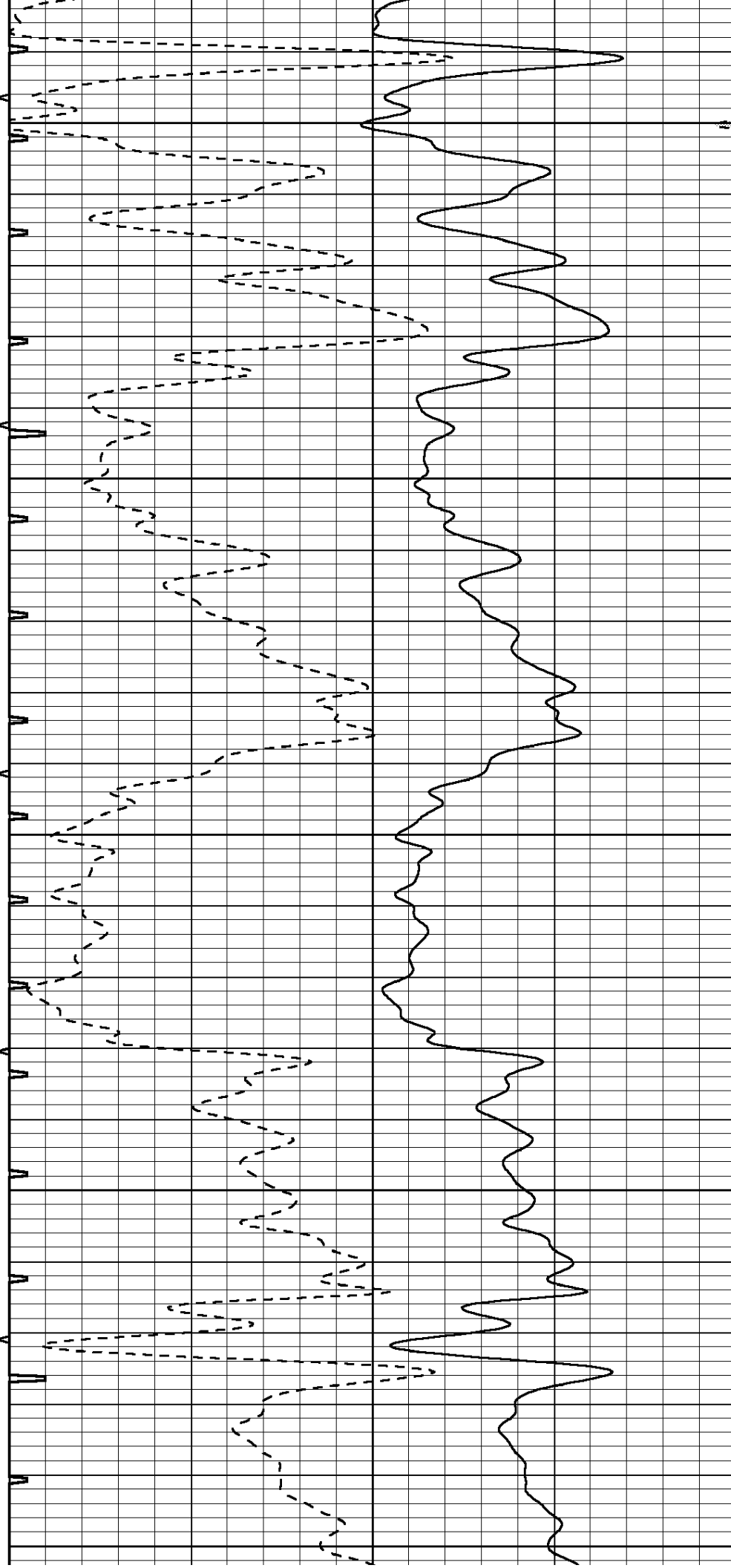
2400

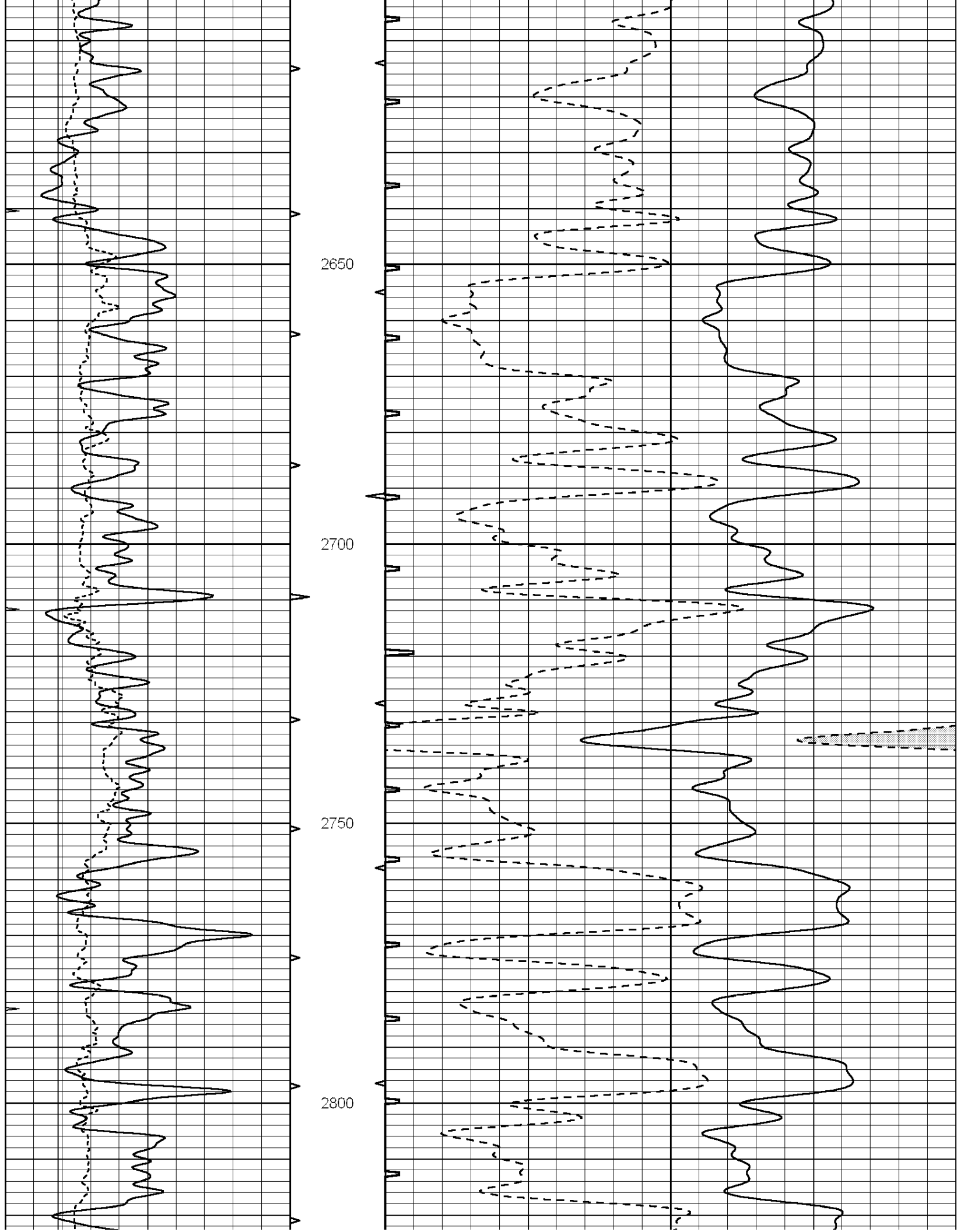
2450

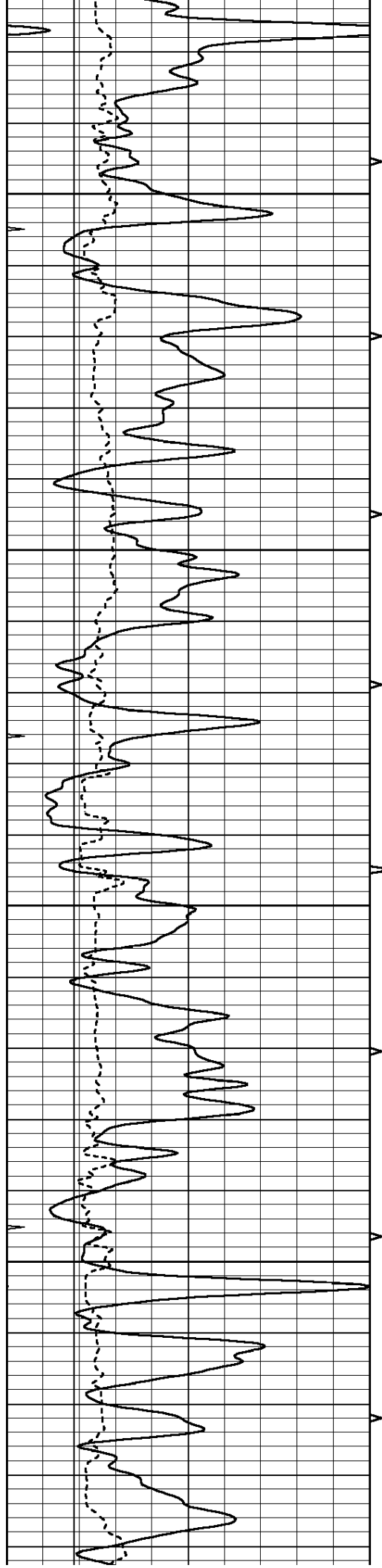
2500

2550

2600





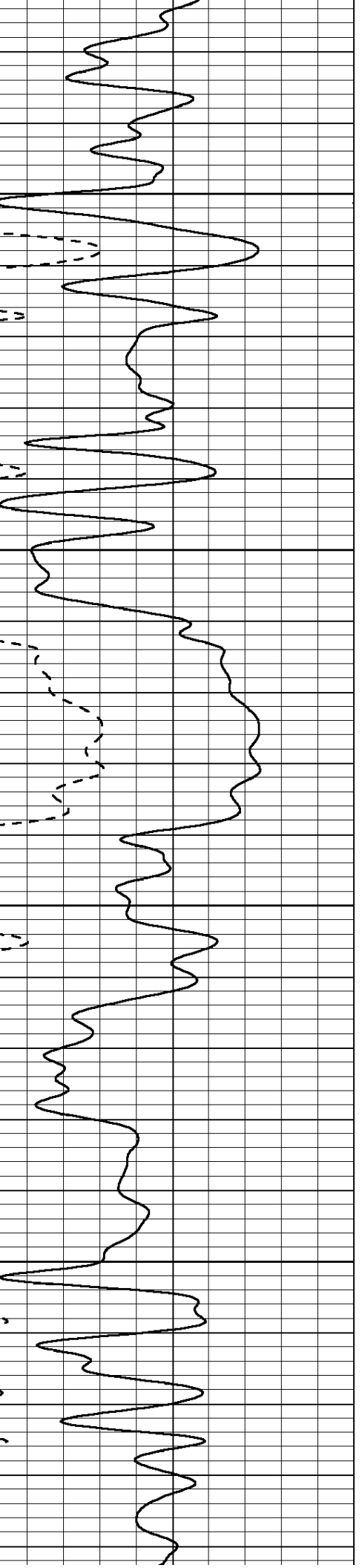
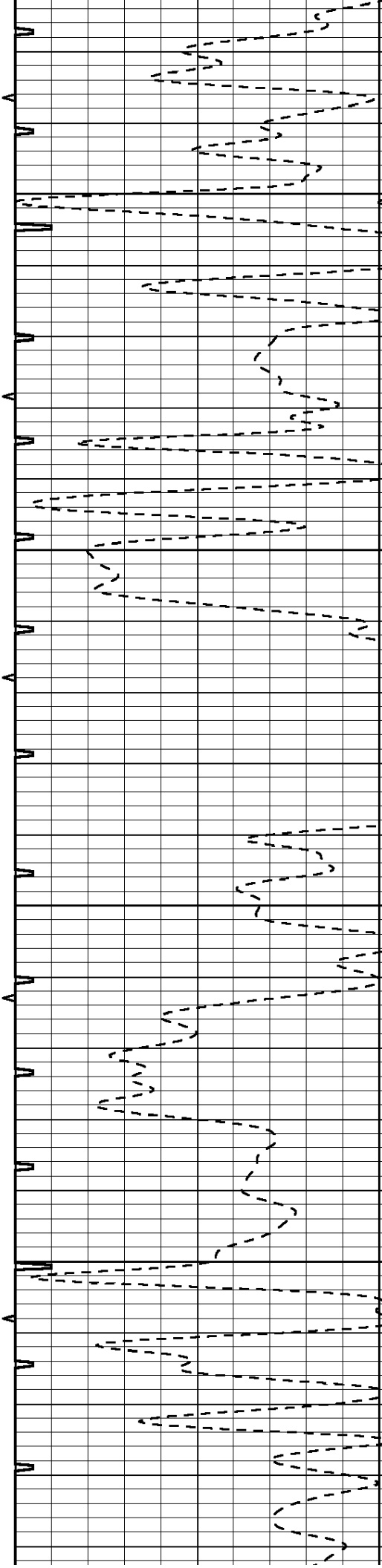


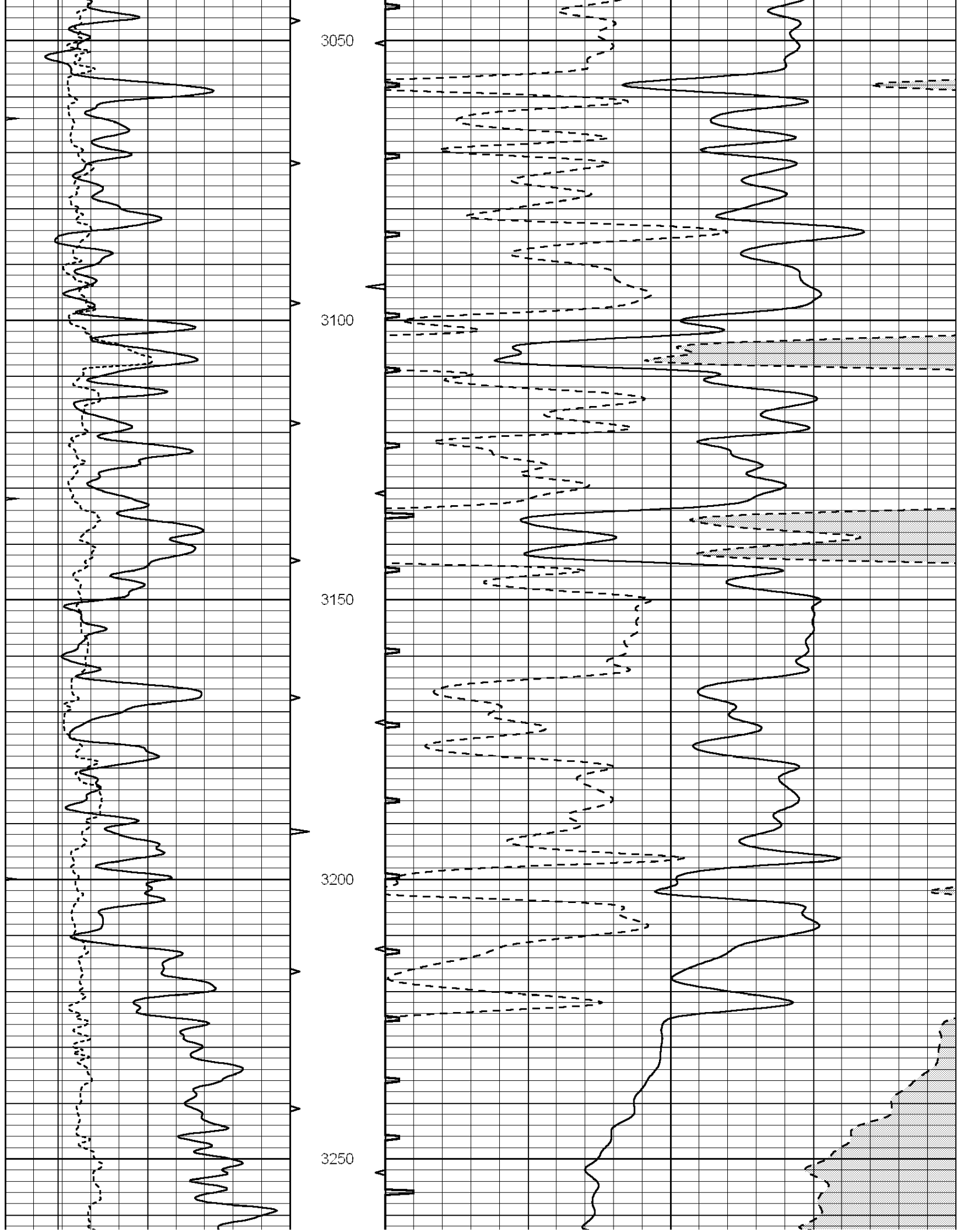
2850

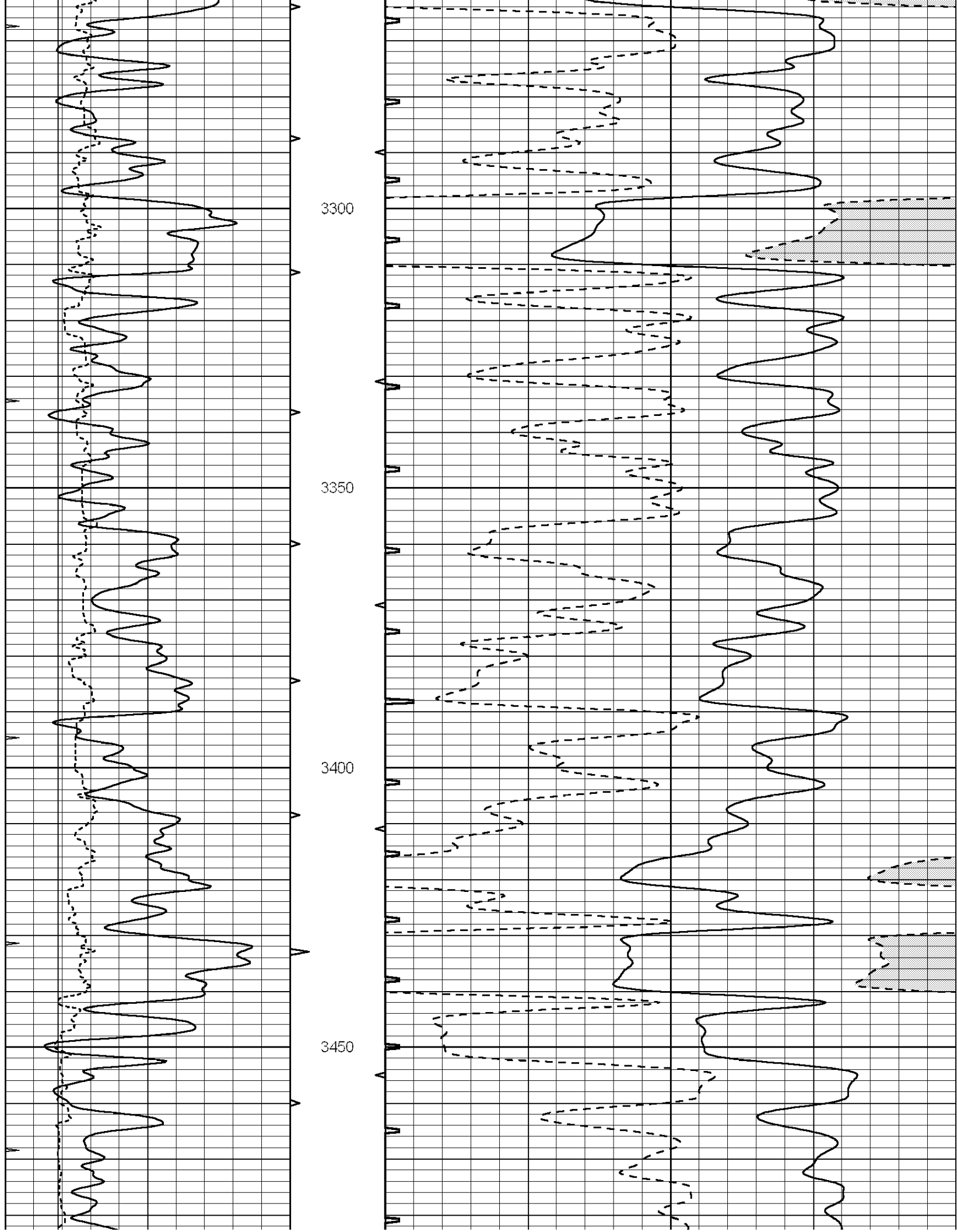
2900

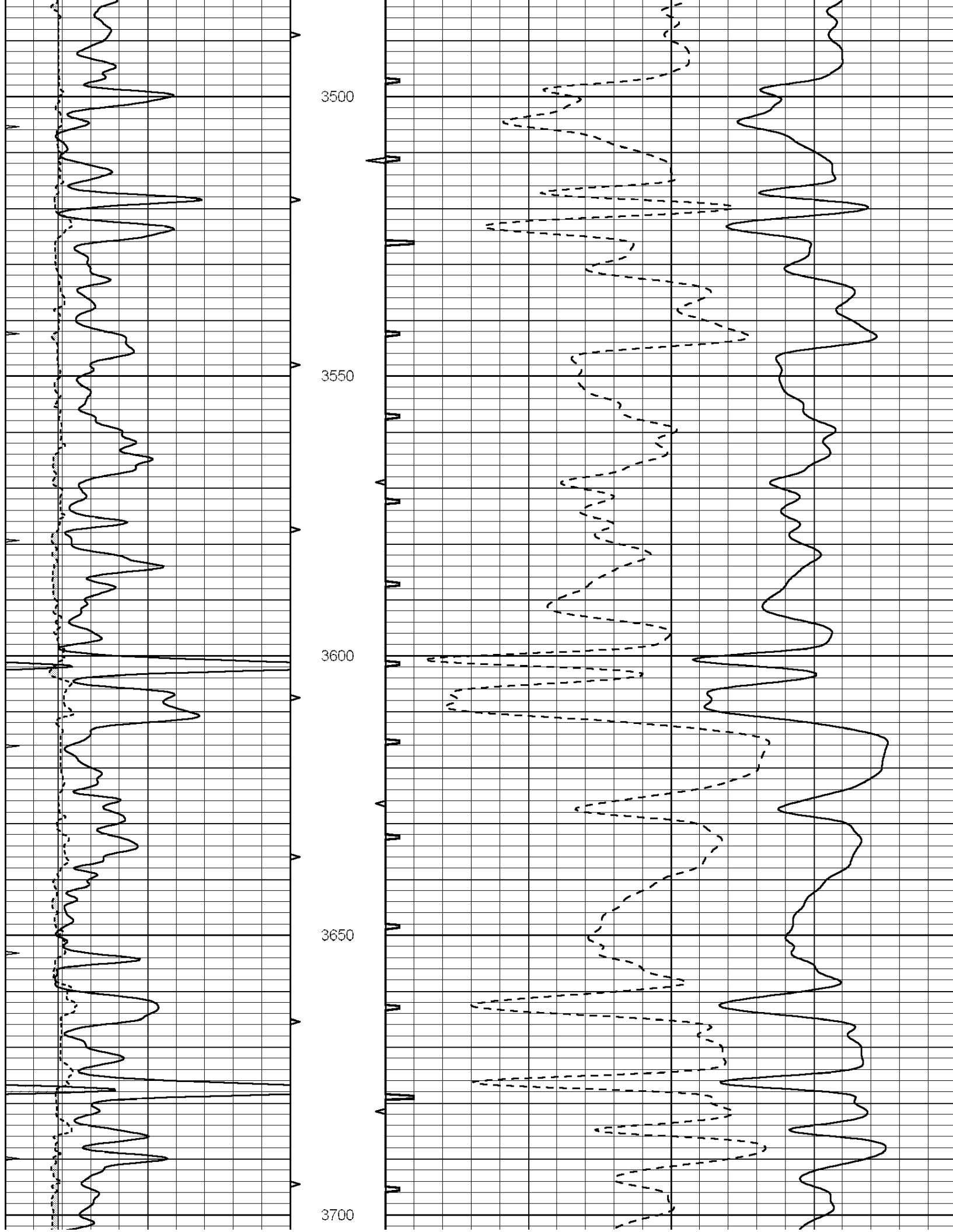
2950

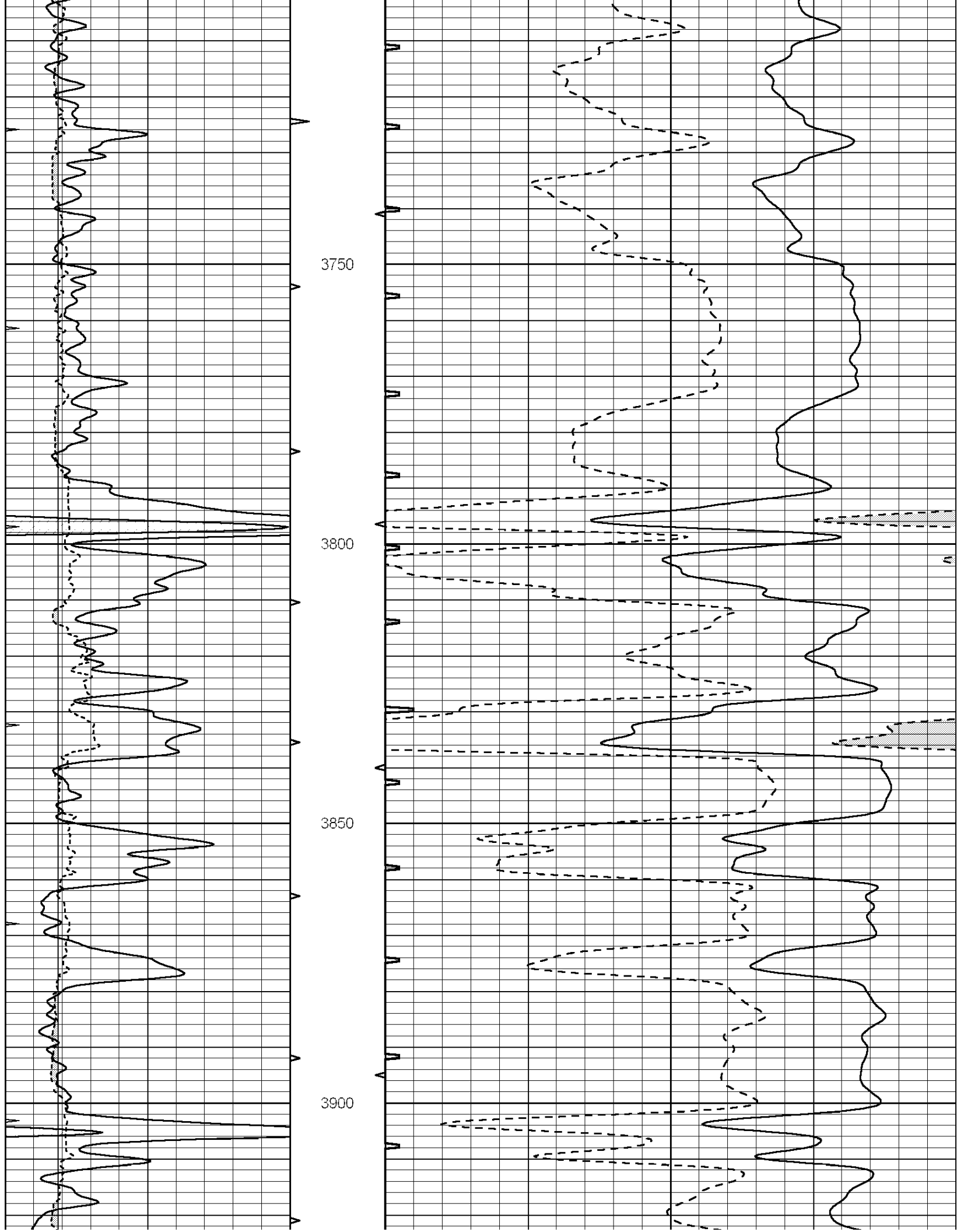
3000

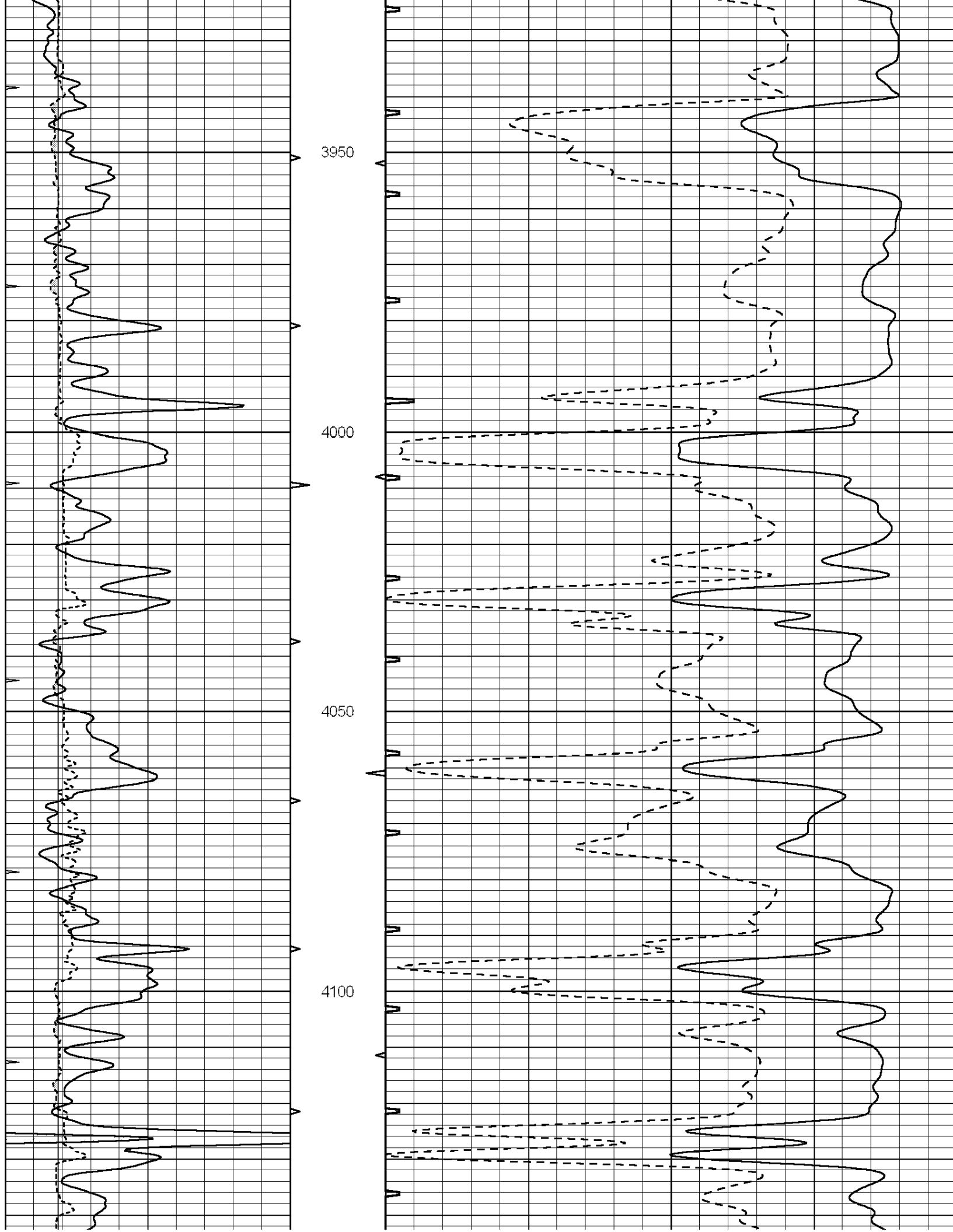


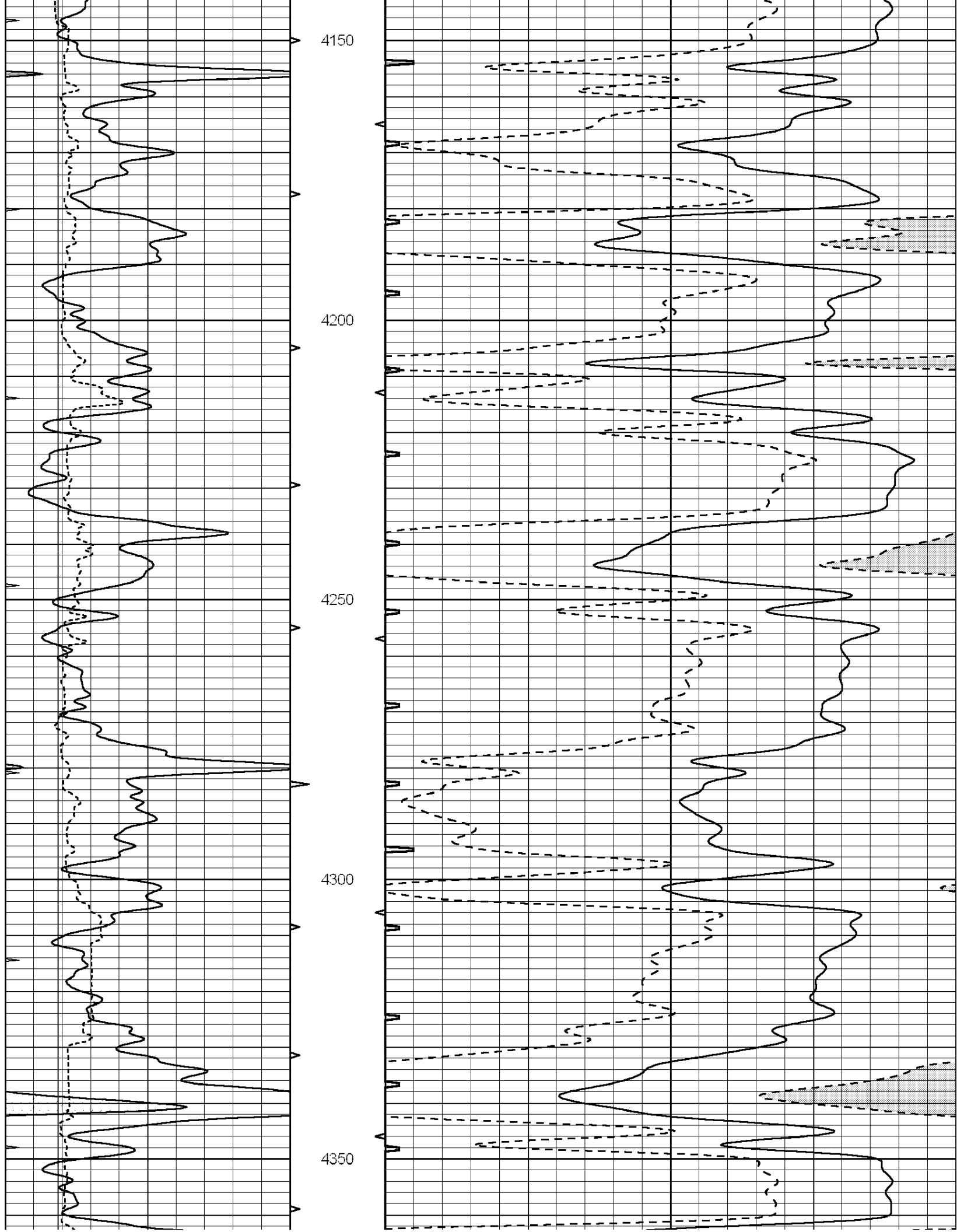


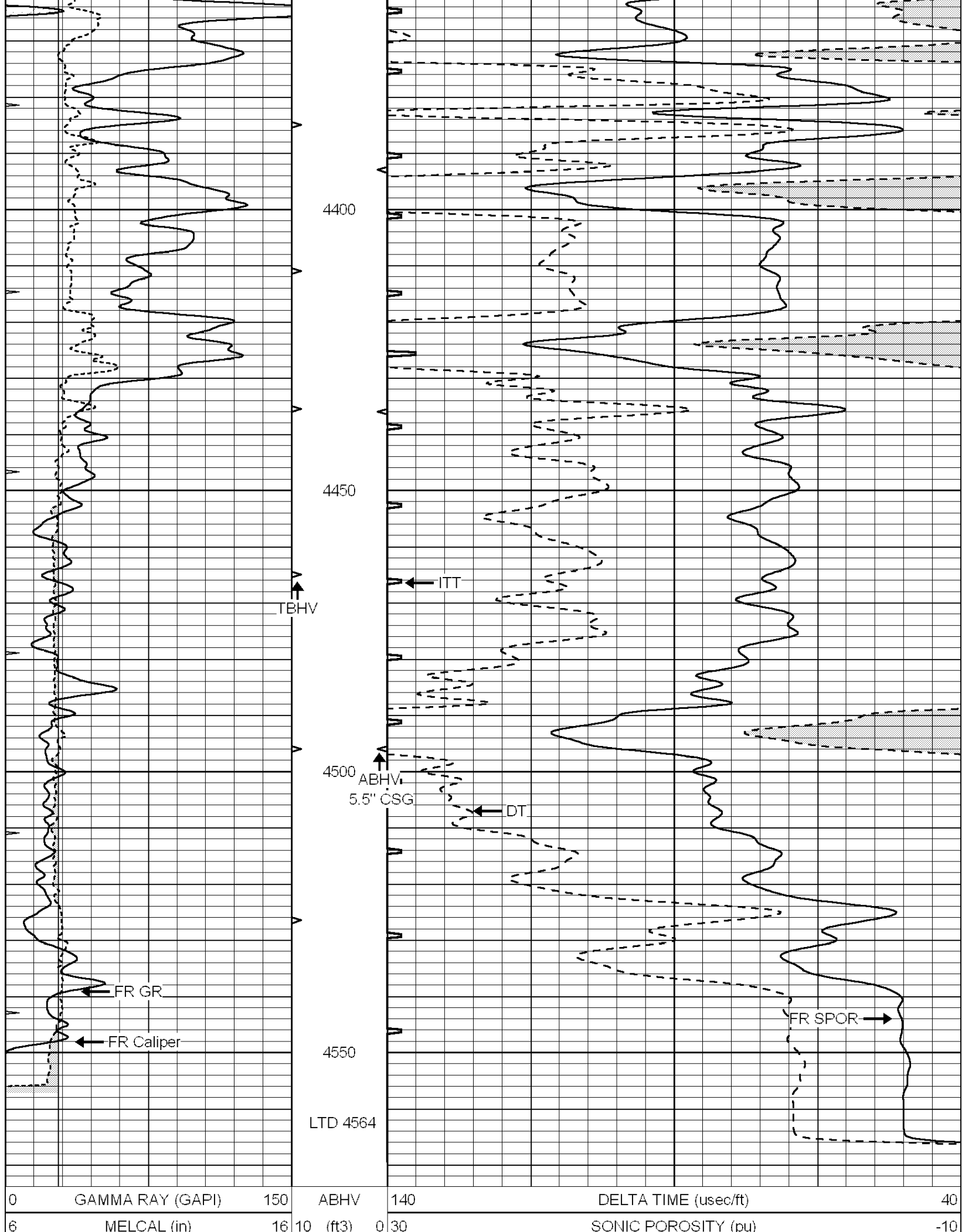












| | | | | | | |
|---|-------|----|---------|----|------------|----|
| 0 | MINMK | 20 | TBHV | 0 | ITT (msec) | 20 |
| | | | 0 (ft3) | 10 | | |

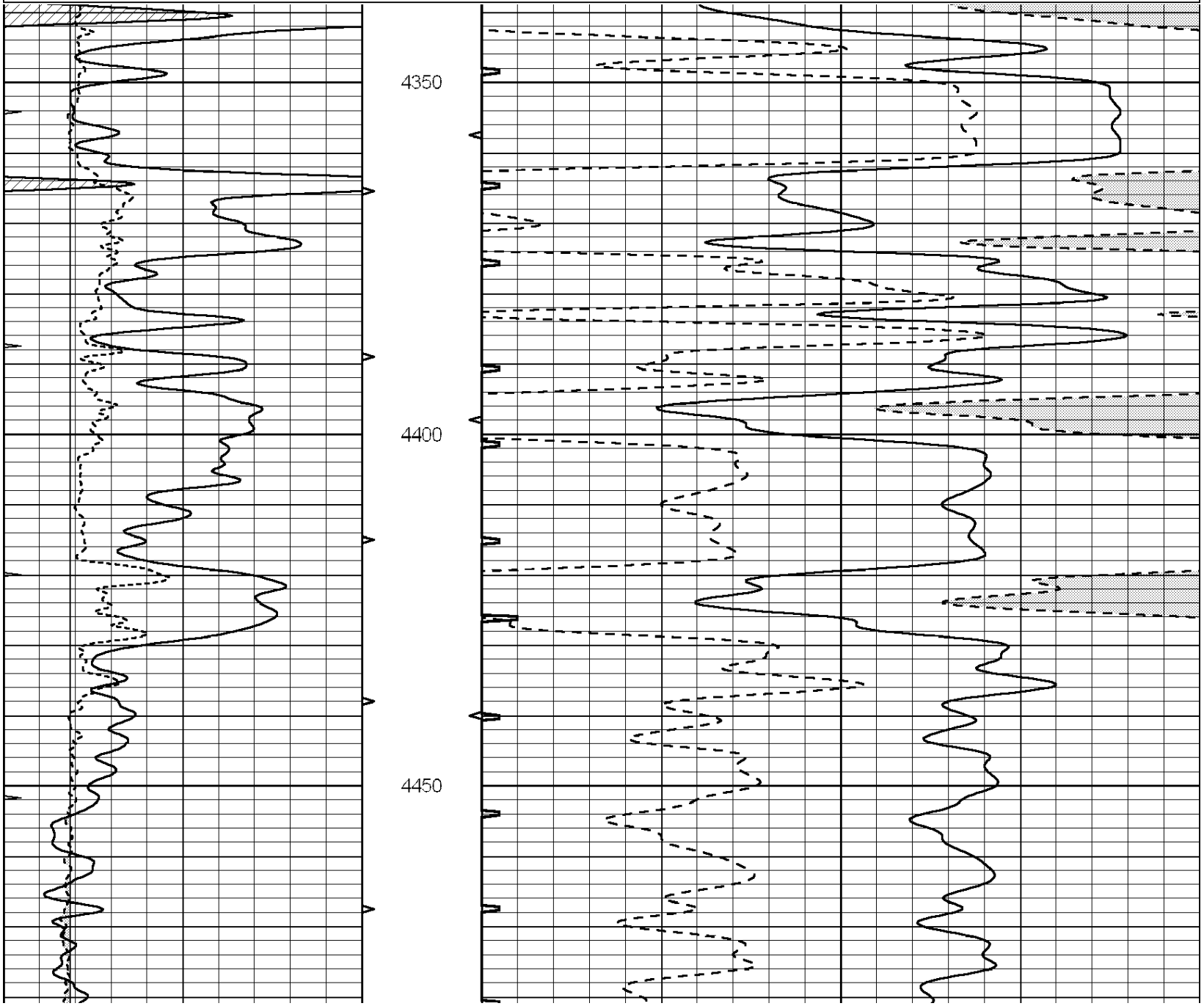


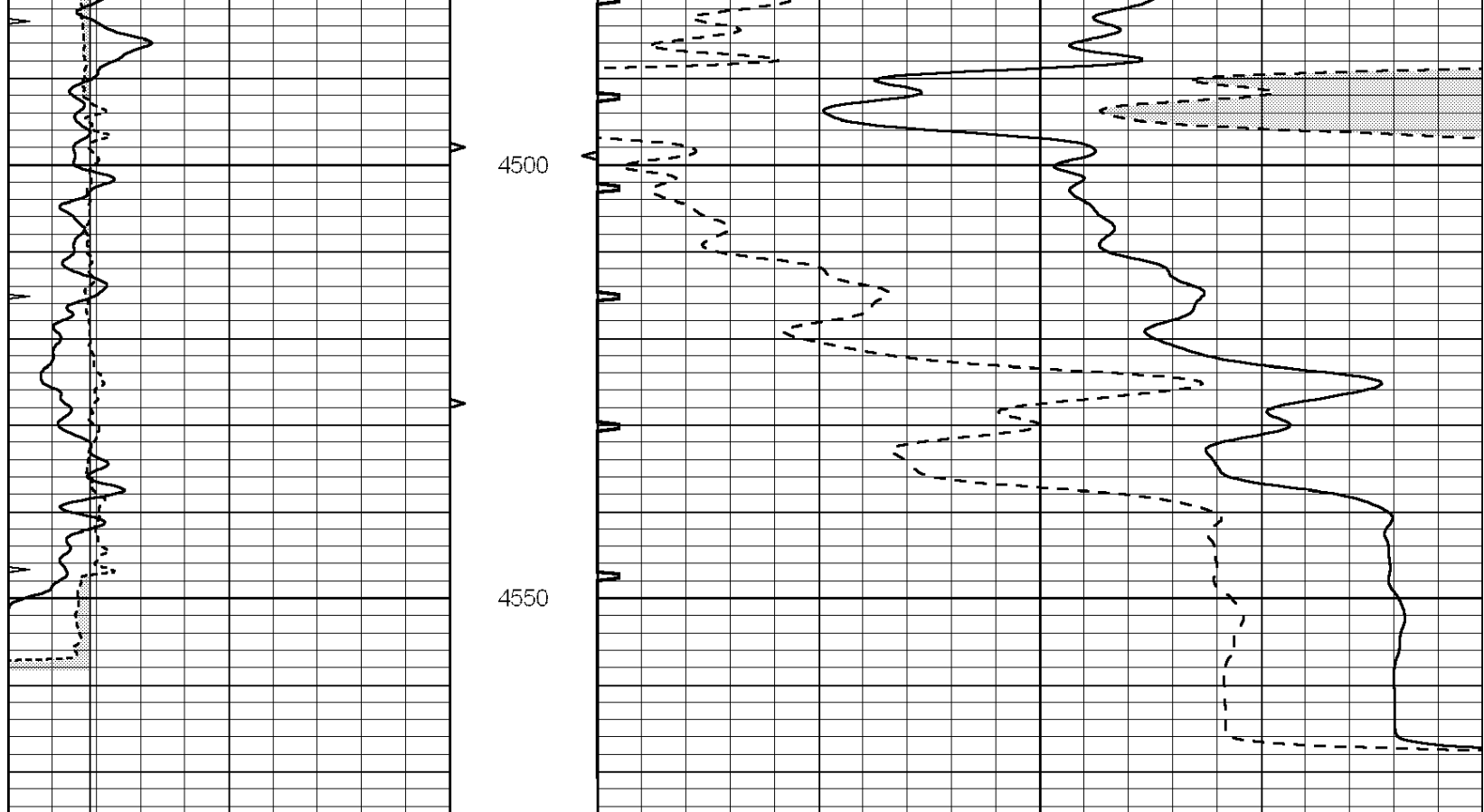
**COMPLETION
& PRODUCTION
SERVICES CO.**

REPEAT SECTION

Database File: 010671ddn.db
 Dataset Pathname: pass9.2
 Presentation Format: slt
 Dataset Creation: Sat Feb 16 07:26:39 2013 by Calc Open-Cased 090629
 Charted by: Depth in Feet scaled 1:240

| | | | | | | |
|---|------------------|-----|----------|-----|----------------------|---------------------|
| 0 | GAMMA RAY (GAPI) | 150 | ABHV | 140 | DELTA TIME (usec/ft) | 40 |
| 6 | MELCAL (in) | 16 | 10 (ft3) | 0 | 30 | SONIC POROSITY (pu) |
| 0 | MINMK | 20 | TBHV | 0 | ITT (msec) | 20 |
| | | | 0 (ft3) | 10 | | |





| | | | | | | |
|---|------------------|-----|------------|-----|----------------------|-----|
| 0 | GAMMA RAY (GAPI) | 150 | ABHV | 140 | DELTA TIME (usec/ft) | 40 |
| 6 | MELCAL (in) | 16 | 10 (ft3) 0 | 30 | SONIC POROSITY (pu) | -10 |
| 0 | MINMK | 20 | TBHV | 0 | ITT (msec) | 20 |
| | | | 0 (ft3) 10 | | | |