



Pioneer Energy Services

Radiation Guard Log

15-135-25,534-00-00

API No.

Company Palomino Petroleum, Inc.

Well KU-Dinges No. 1

Field

County Ness State Kansas

Location 2,550' FSL & 1,498' FEL

Sec: 1 Twp: 18S Rge: 26W

Ground Level Kelly Bushing 5 Ft. Above Perm. Datum

Log Measured From Kelly Bushing

Other Services
None

Drilling Measured From Kelly Bushing

Elevation
K.B. 2499
D.F. 2494
G.L. 2494

Date 2/13/2013

Run Number One

Depth Driller 4579

Depth Logger 4582

Bottom Logged Interval 4581

Top Log Interval 200

Casing Driller 8.625 @ 217

Casing Logger 217

Bit Size 7.875

Type Fluid in Hole Chemical

Salinity, ppm CL 3000

Density / Viscosity 9.45 57

pH / Fluid Loss 10.5 6.0

Source of Sample Flowline

Rm @ Meas. Temp .80 @ 74

Rmf @ Meas. Temp .60 @ 74

Rmc @ Meas. Temp 1.08 @ 74

Source of Rmf / Rmc Charts

Rm @ BHT .49 @ 122

Operating Rig Time 2 1/2 Hours

Max Rec. Temp. F 122

Equipment Number 108

Location Hays

Recorded By J. Long

Witnessed By Nicholas Gerstner

<<< Fold Here >>>

All interpretations are opinions based on inferences from electrical or other measurements and we cannot and do not guarantee the accuracy or correctness of any interpretation, and we shall not, except in the case of gross or willful negligence on our part, be liable or responsible for any loss, costs, damages, or expenses incurred or sustained by anyone resulting from any interpretation made by any of our officers, agents or employees. These interpretations are also subject to our general terms and conditions set out in our current Price Schedule.

Comments

Thank you for using Log-Tech, Inc.
(785) 625-3858

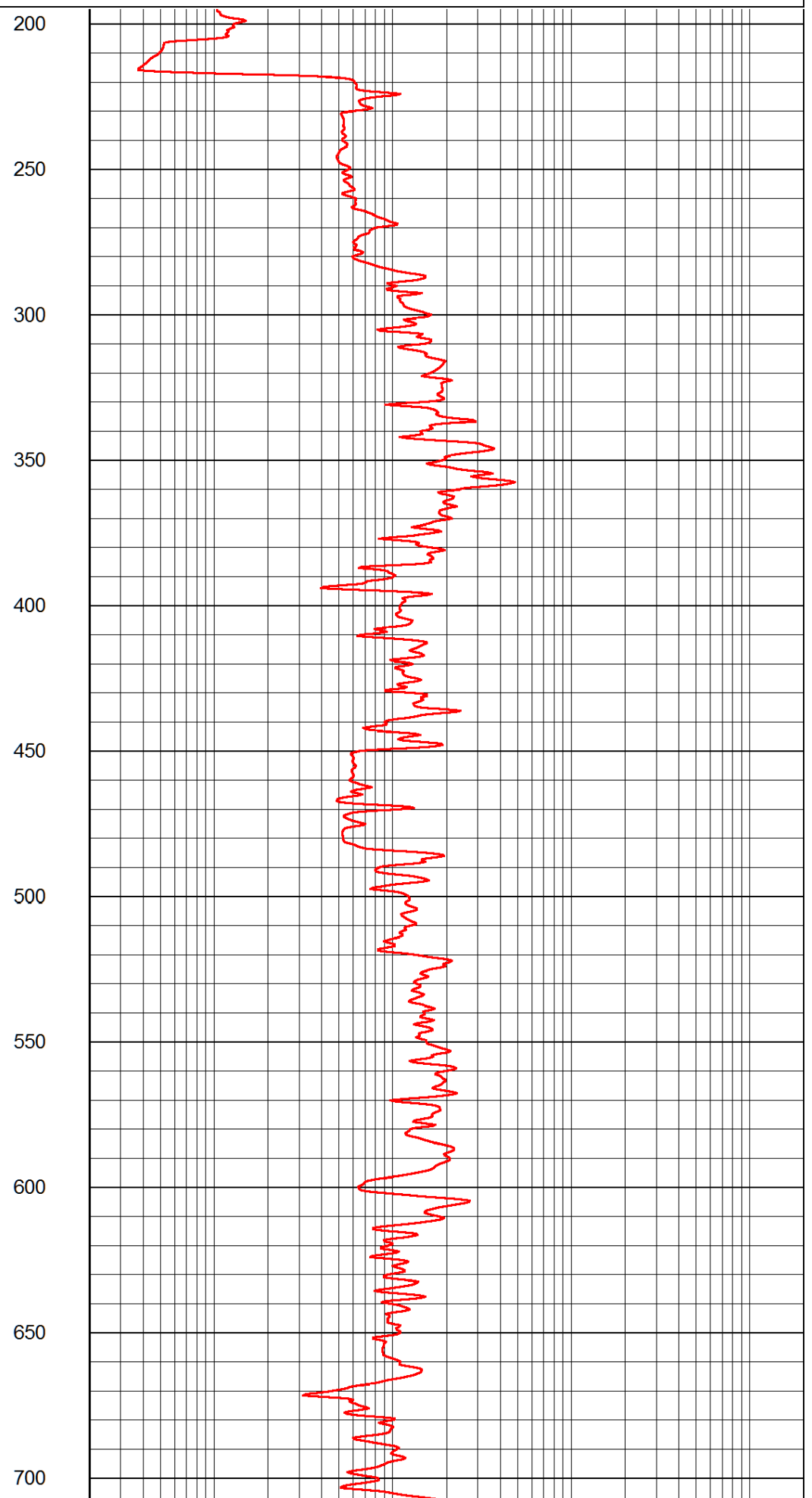
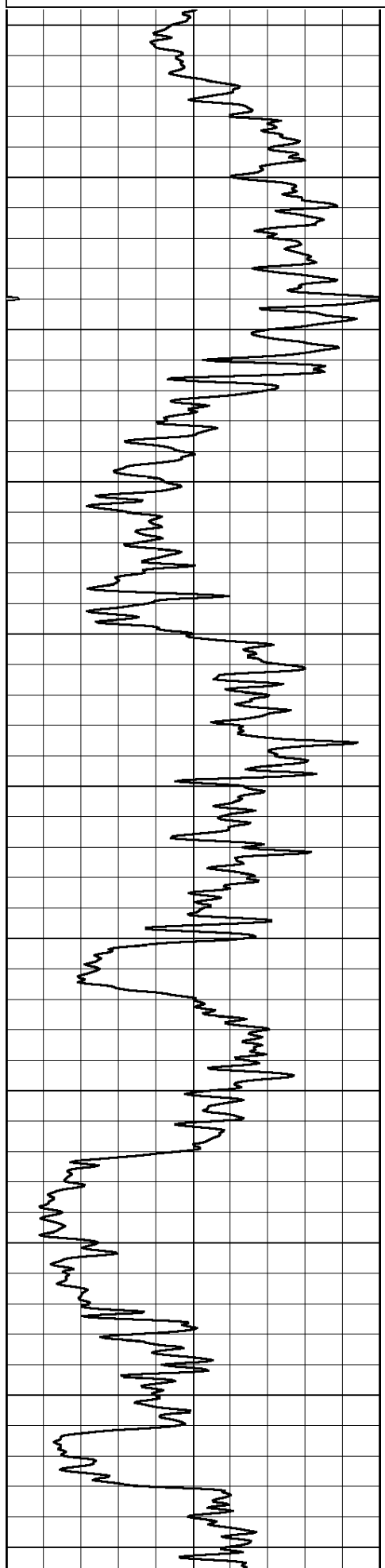
Ness City, West to H Road, 4 North, 1 West to Cattle Guard,
2 West Into rig (Turn West on South side of fence line)

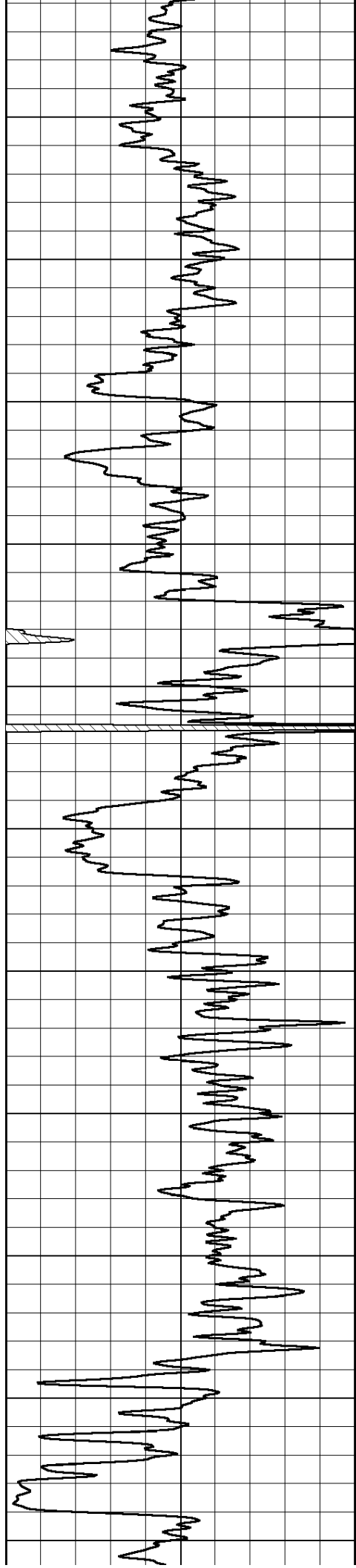
Database File: palomino_ku-dinges_1hd.db
 Dataset Pathname: rag/palorag
 Presentation Format: rag2in
 Dataset Creation: Wed Feb 13 12:01:49 2013
 Charted by: Depth in Feet scaled 1:600

0 Gamma Ray (GAPI) 150

0.2 Igrd (Ohm-m)

2000





750

800

850

900

950

1000

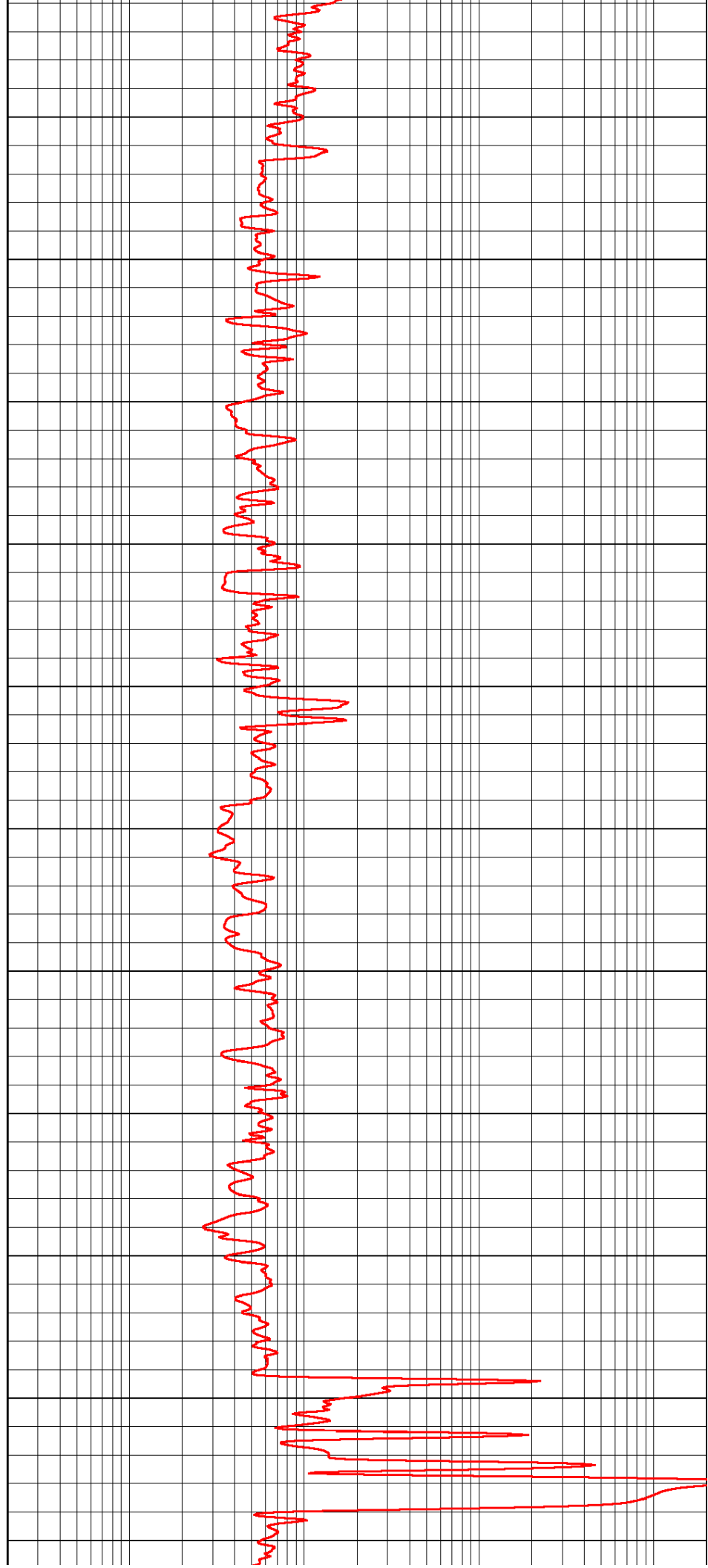
1050

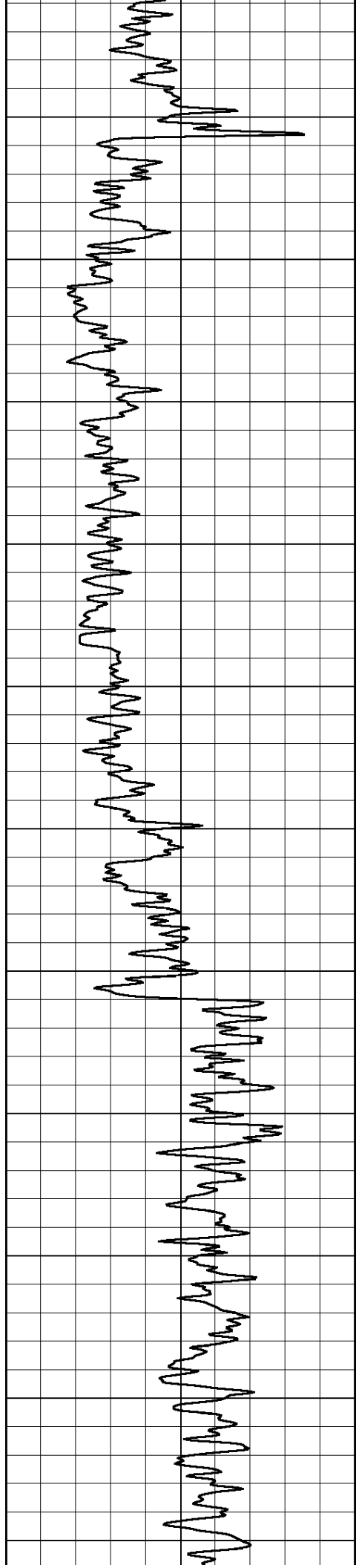
1100

1150

1200

1250





1300

1350

1400

1450

1500

1550

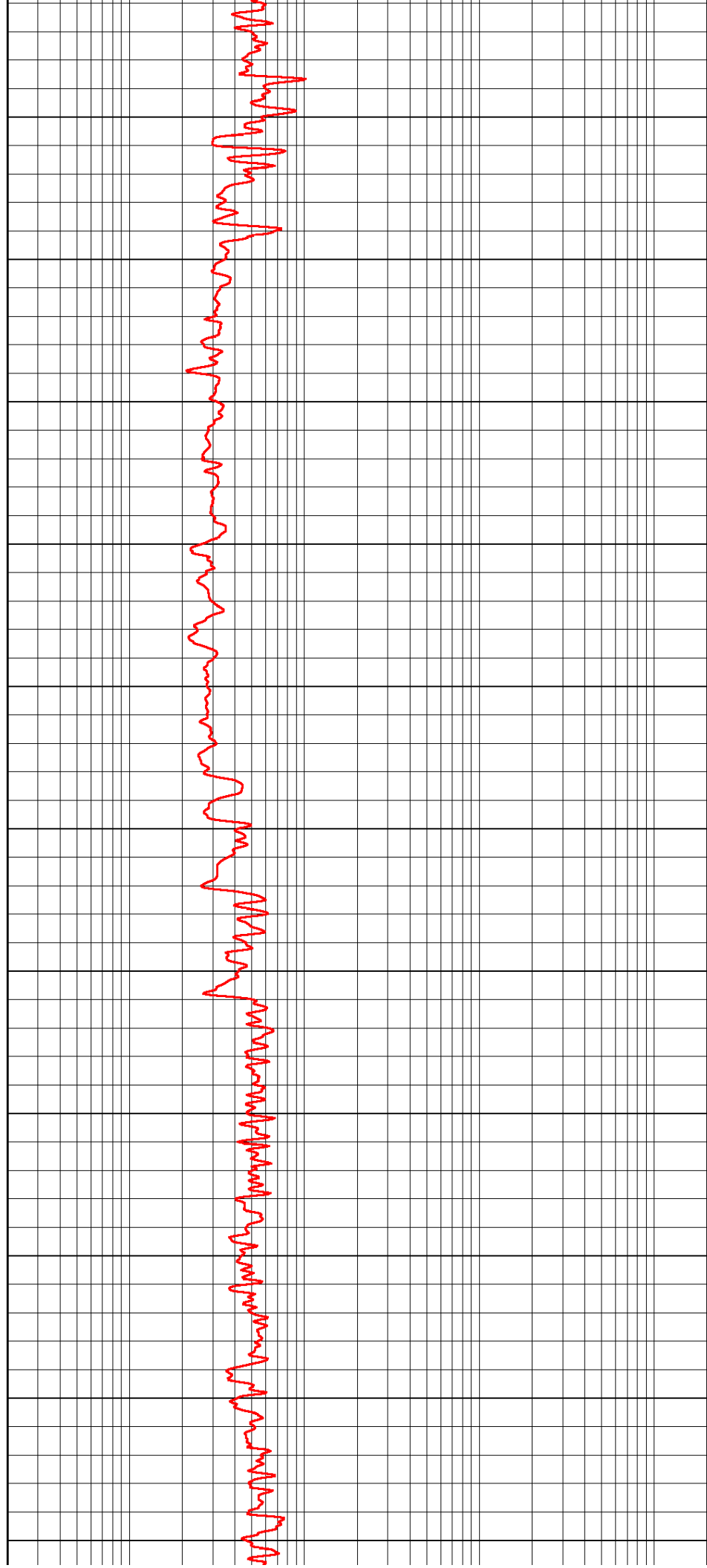
1600

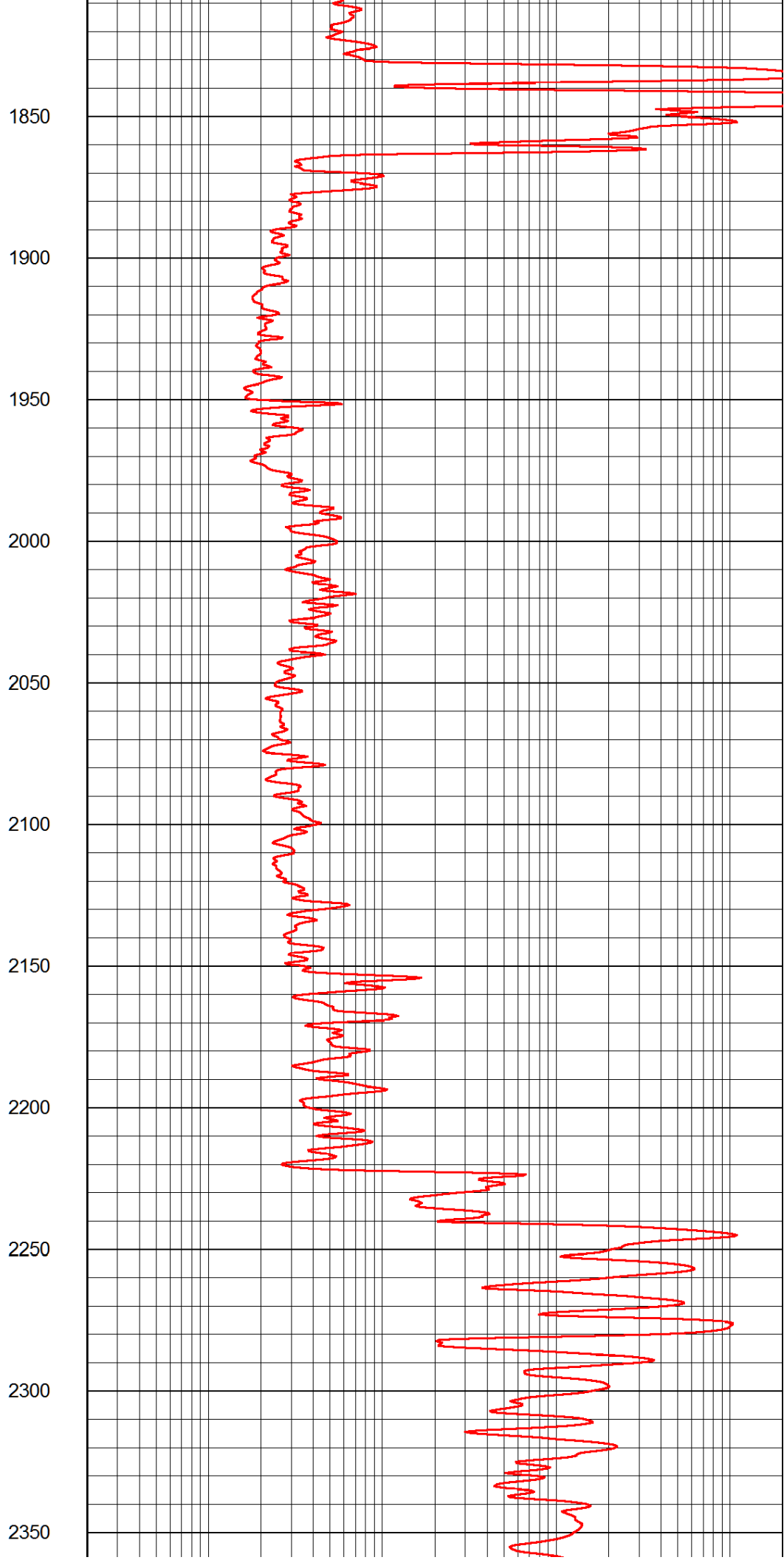
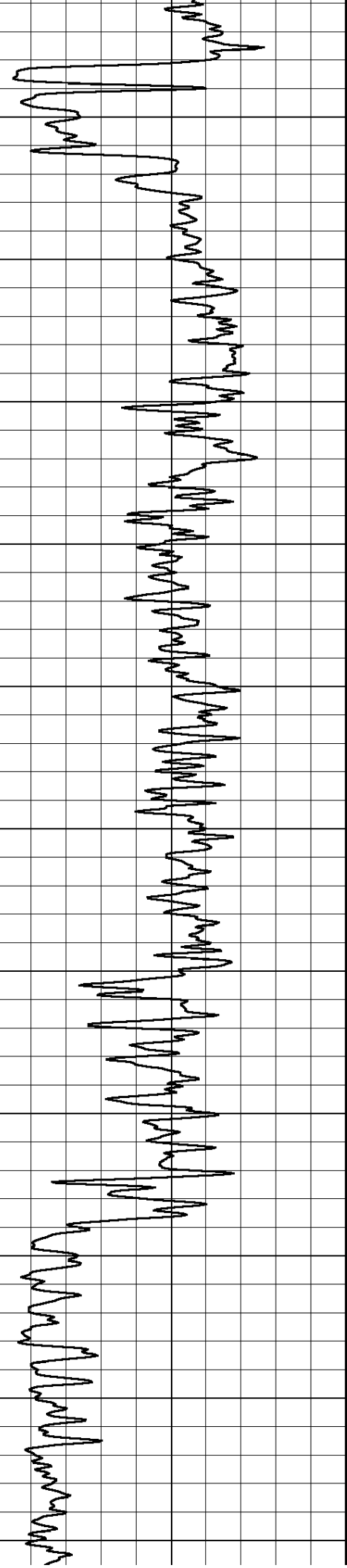
1650

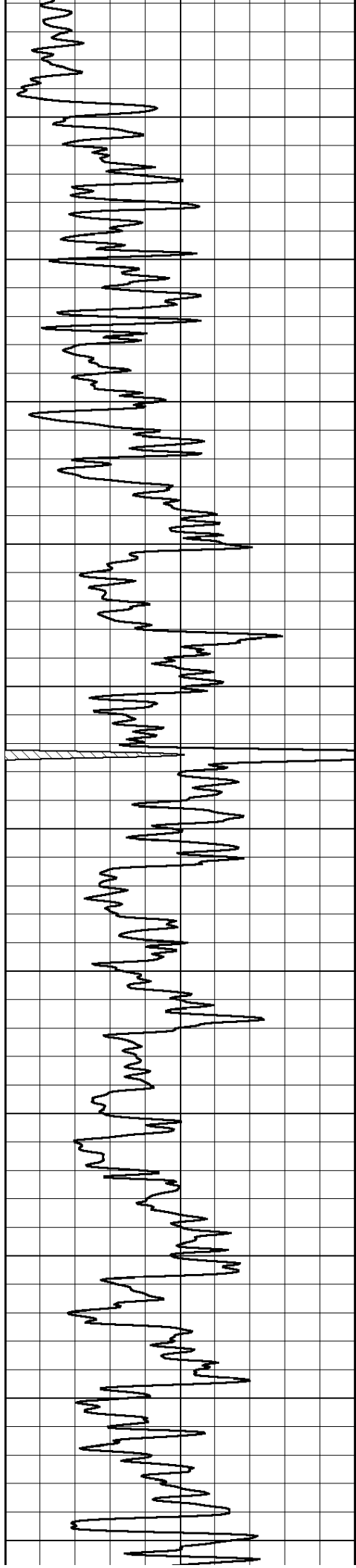
1700

1750

1800







2400

2450

2500

2550

2600

2650

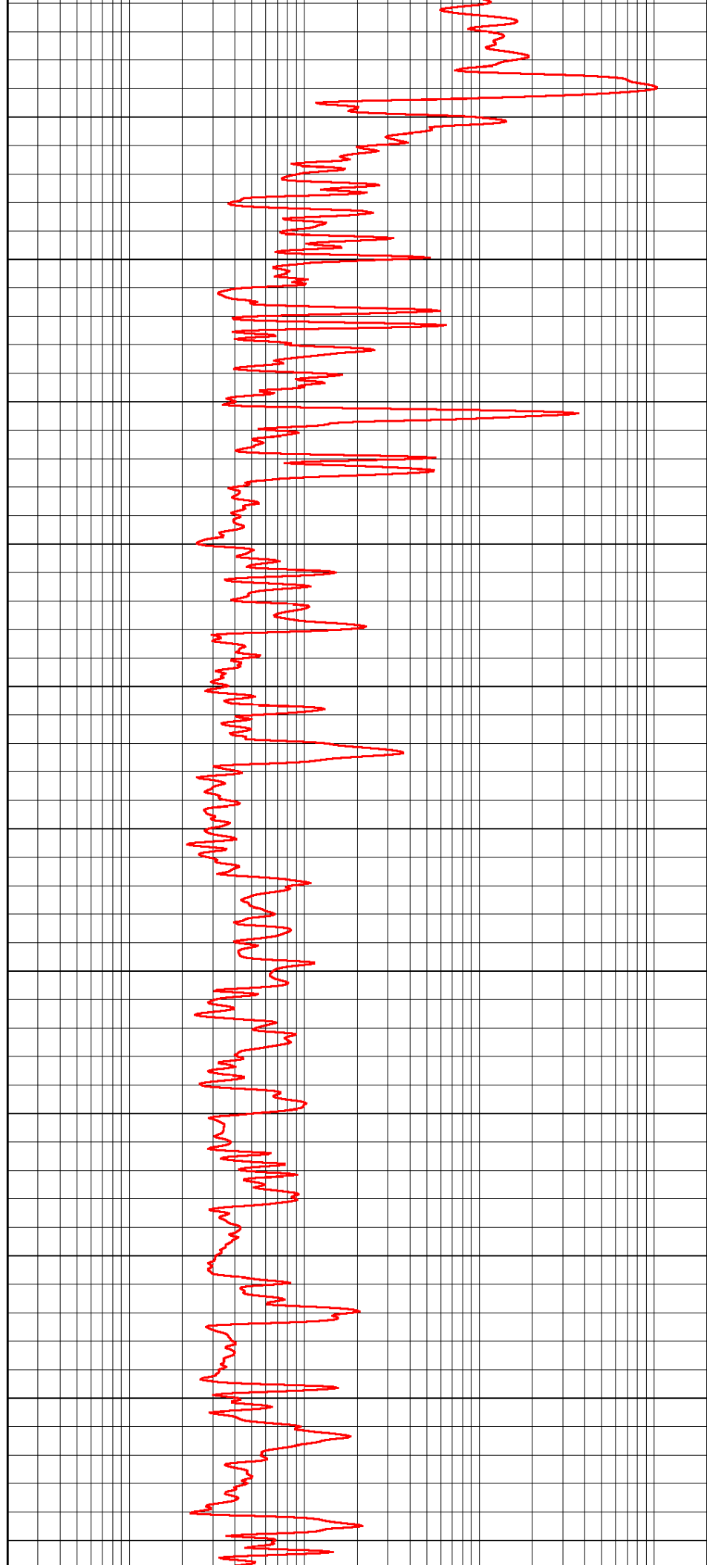
2700

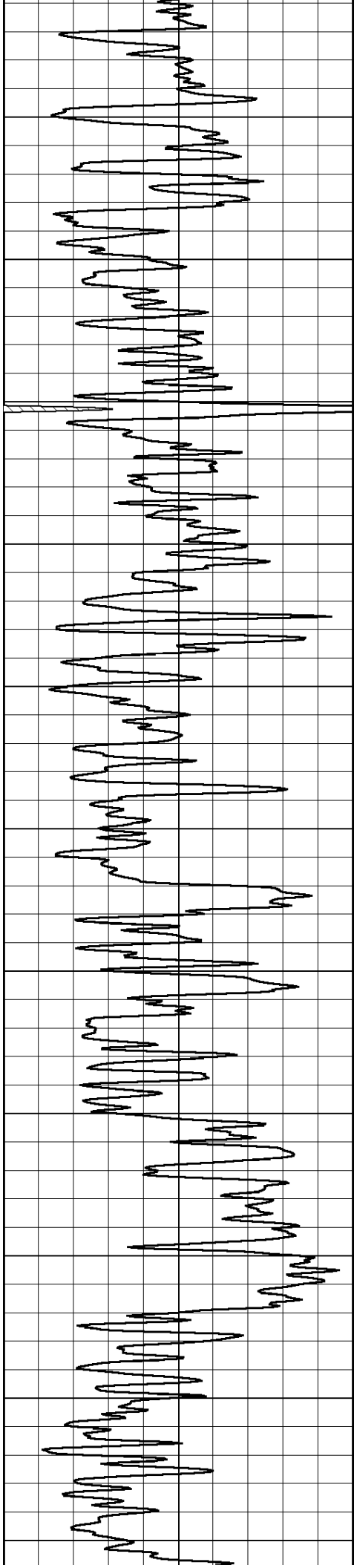
2750

2800

2850

2900





2950

3000

3050

3100

3150

3200

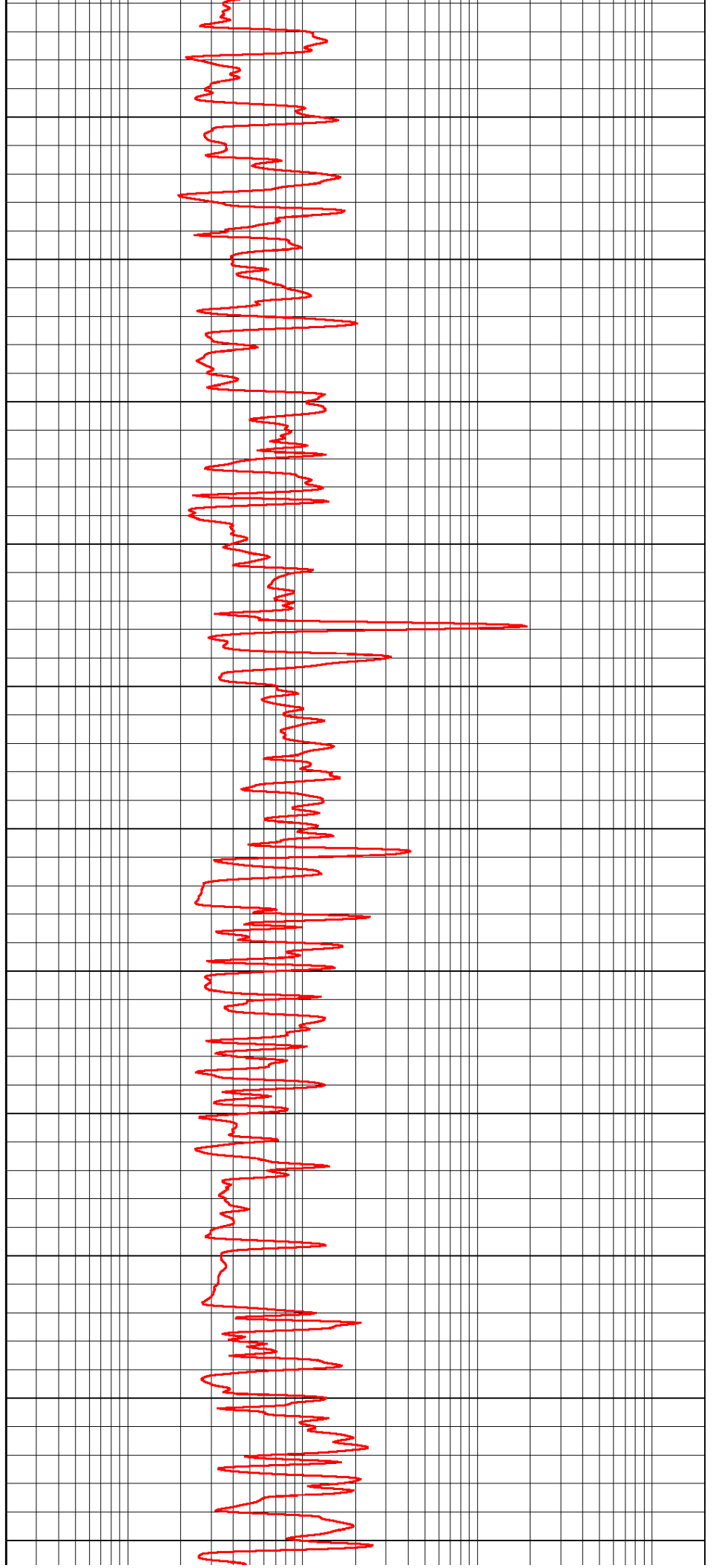
3250

3300

3350

3400

3450



2950

3000

3050

3100

3150

3200

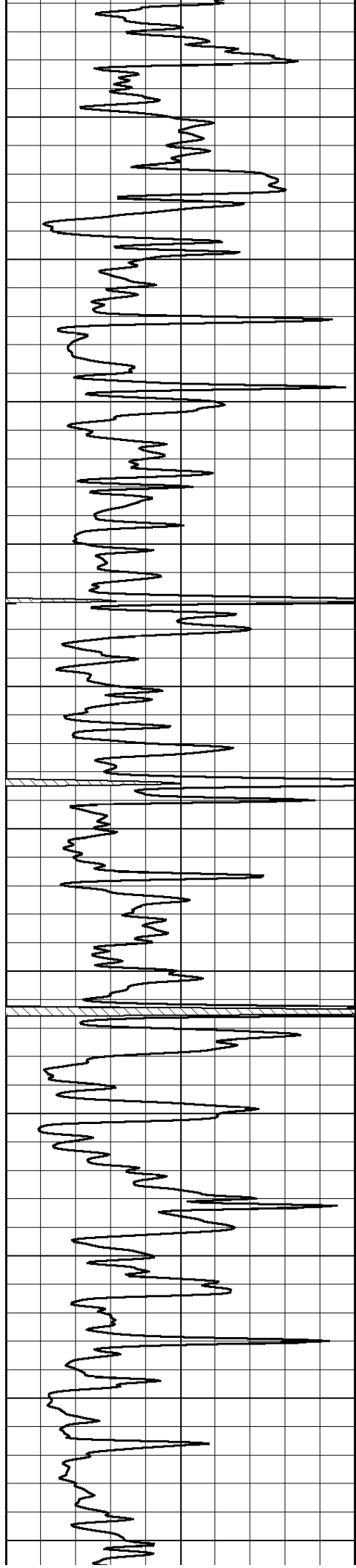
3250

3300

3350

3400

3450



3500

3550

3600

3650

3700

3750

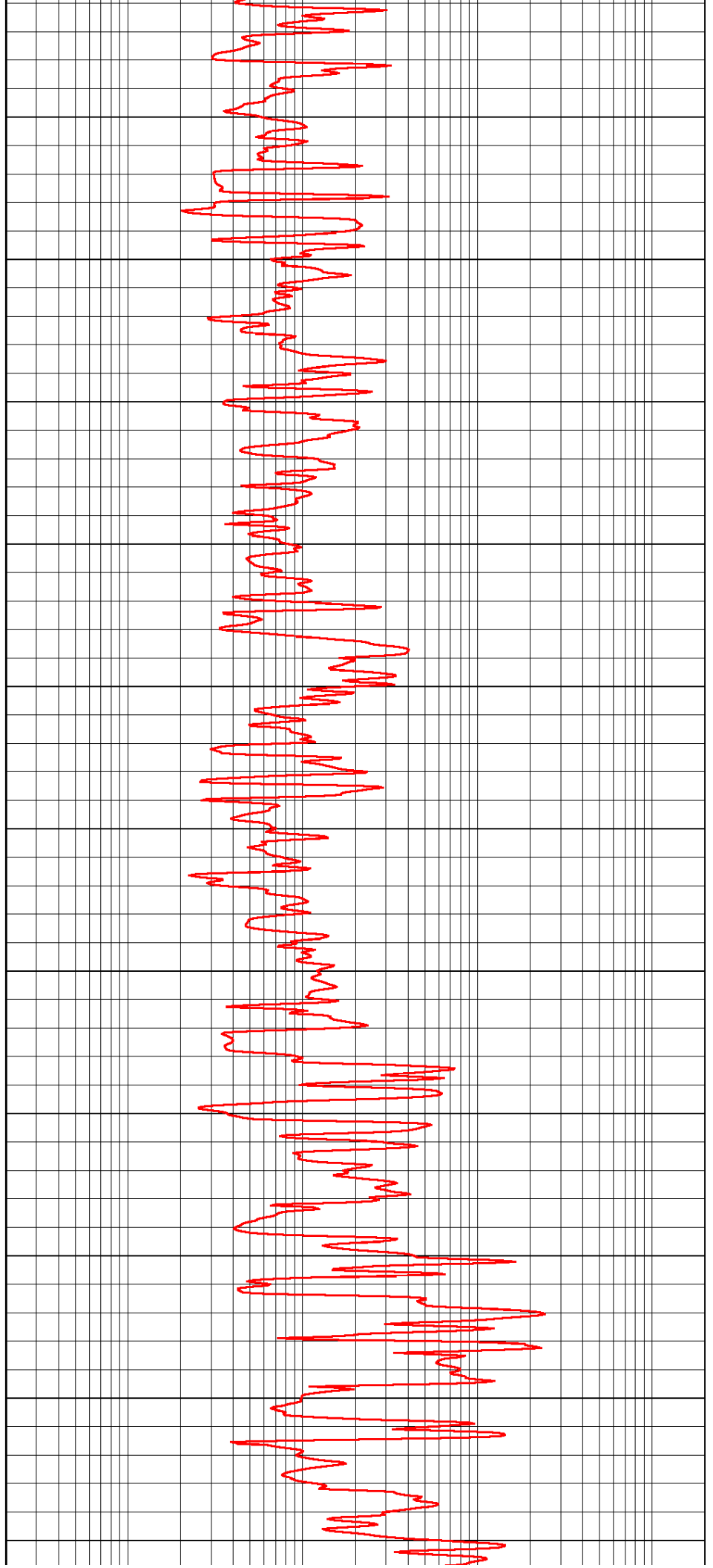
3800

3850

3900

3950

4000



3500

3550

3600

3650

3700

3750

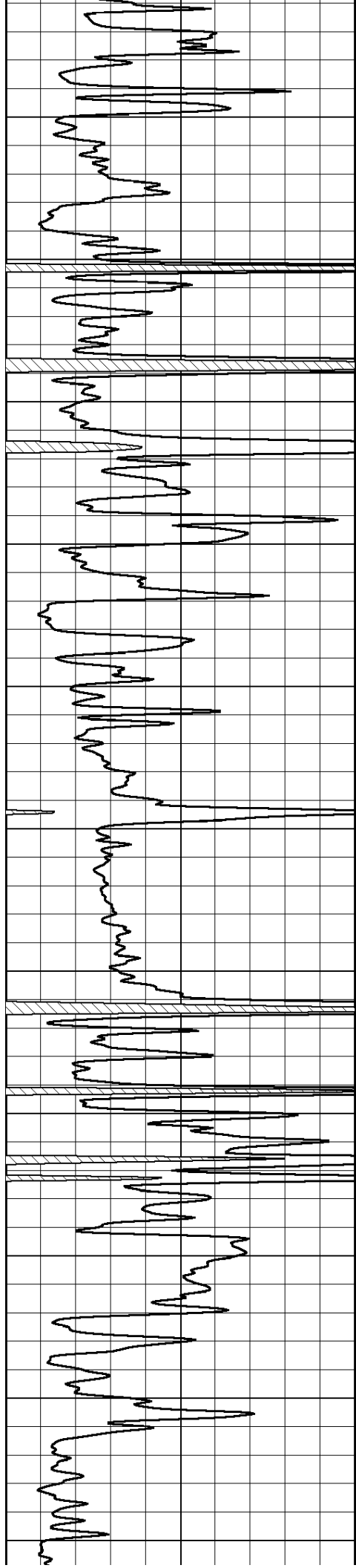
3800

3850

3900

3950

4000



4050

4100

4150

4200

4250

4300

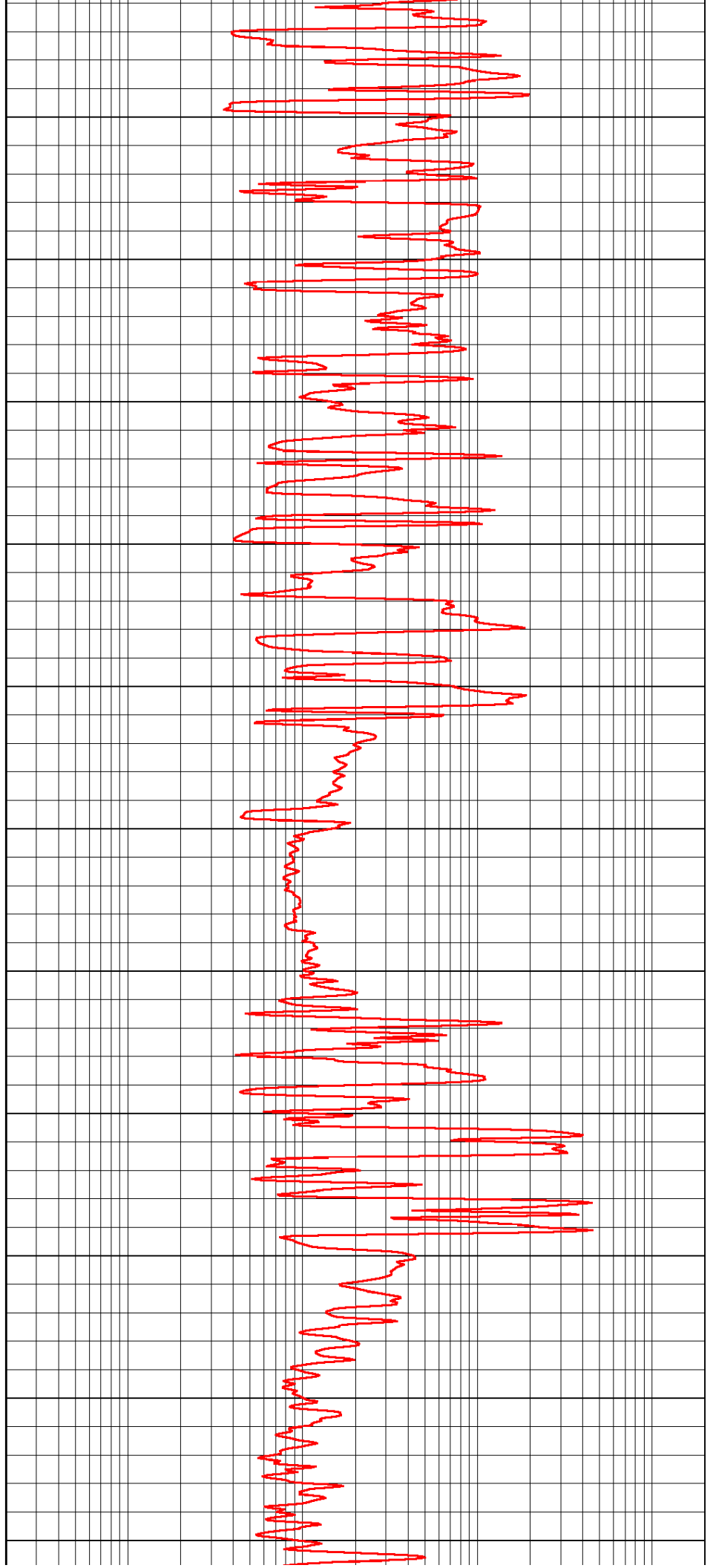
4350

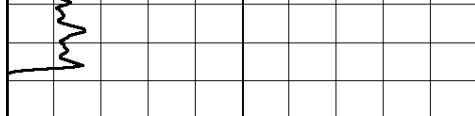
4400

4450

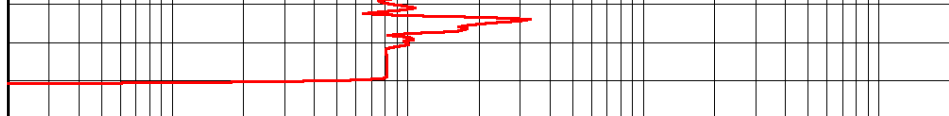
4500

4550





0 Gamma Ray (GAPI) 150



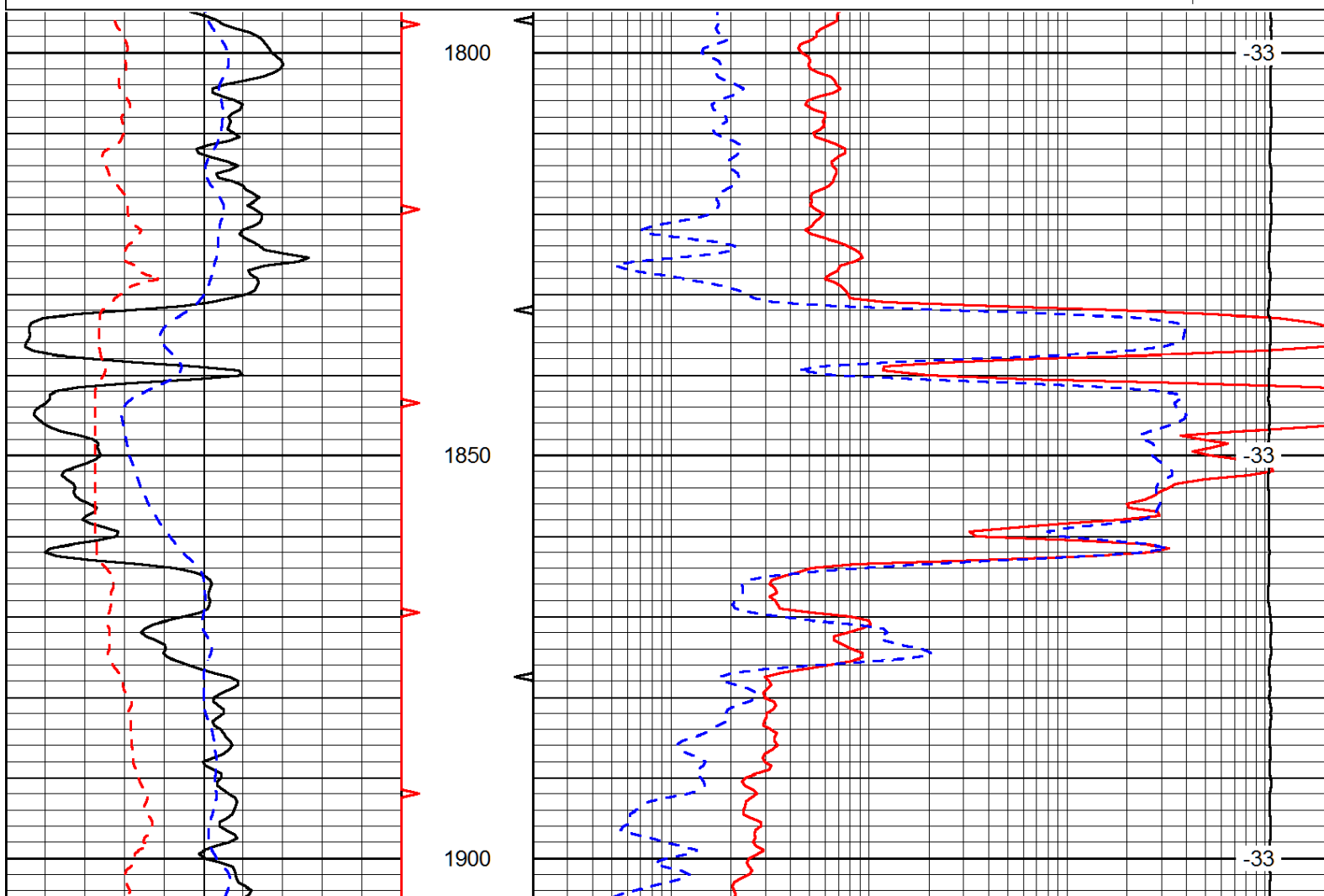
0.2 LGRD (Ohm-m) 2000

Database File: palomino_ku-dinges_1hd.db
 Dataset Pathname: rag/palorag
 Presentation Format: rag
 Dataset Creation: Wed Feb 13 12:01:49 2013
 Charted by: Depth in Feet scaled 1:240

0 Gamma Ray (GAPI) 150
 6 SCAL (in) 16
 -200 sp (mV) 0

0.2 LGRD (Ohm-m) 2000
 560 SWNC (NAPI) 2160
 15000 Line Tension (lb) 0

LSPD
(ft/min)



0 Gamma Ray (GAPI) 150
 6 SCAL (in) 16
 -200 sp (mV) 0

0.2 LGRD (Ohm-m) 2000
 560 SWNC (NAPI) 2160
 15000 Line Tension (lb) 0

LSPD
(ft/min)

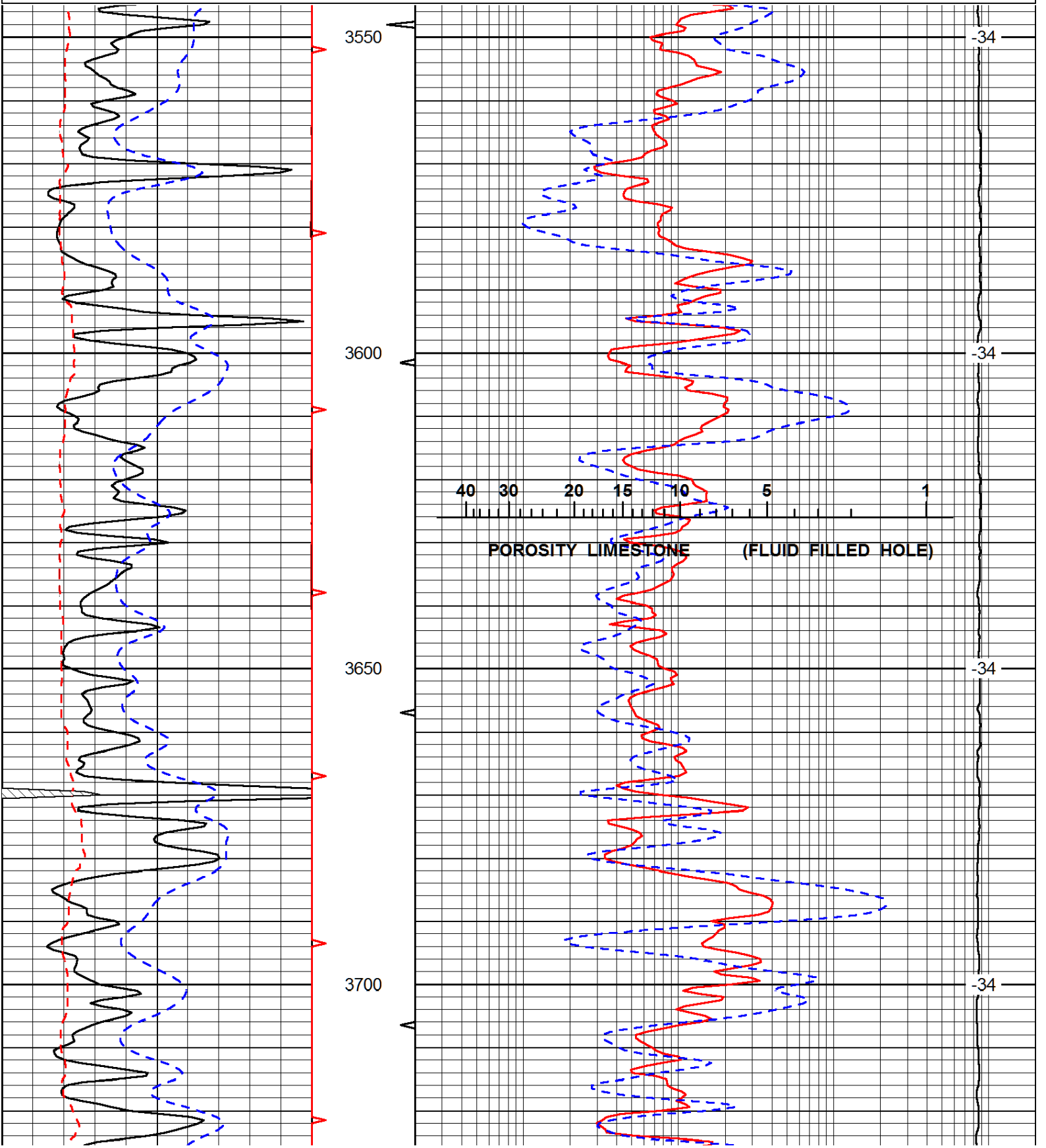
Database File: palomino_ku-dinges_1hd.db

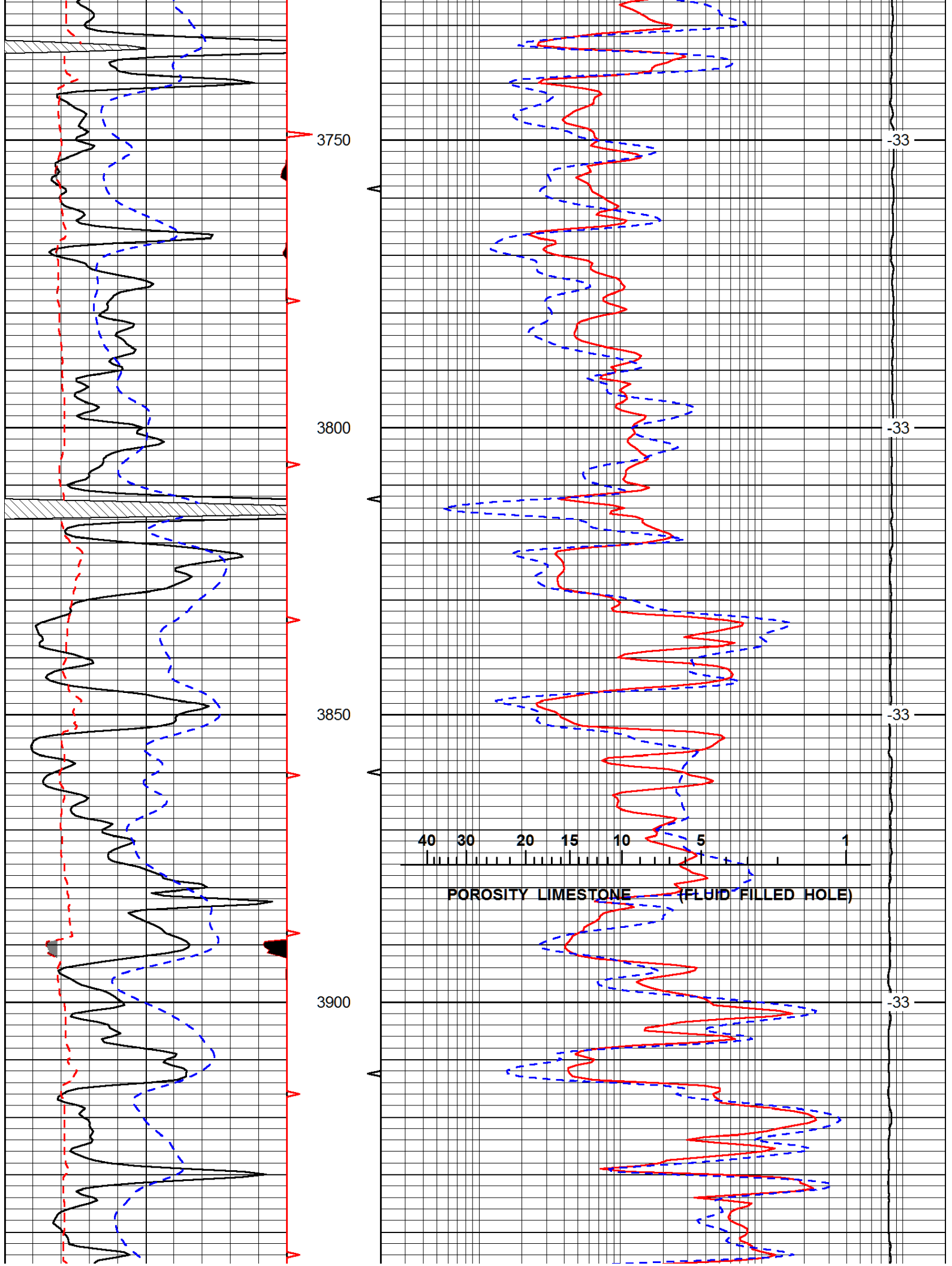
Dataset Pathname: rag/palorag
 Presentation Format: rag
 Dataset Creation: Wed Feb 13 12:01:49 2013
 Charted by: Depth in Feet scaled 1:240

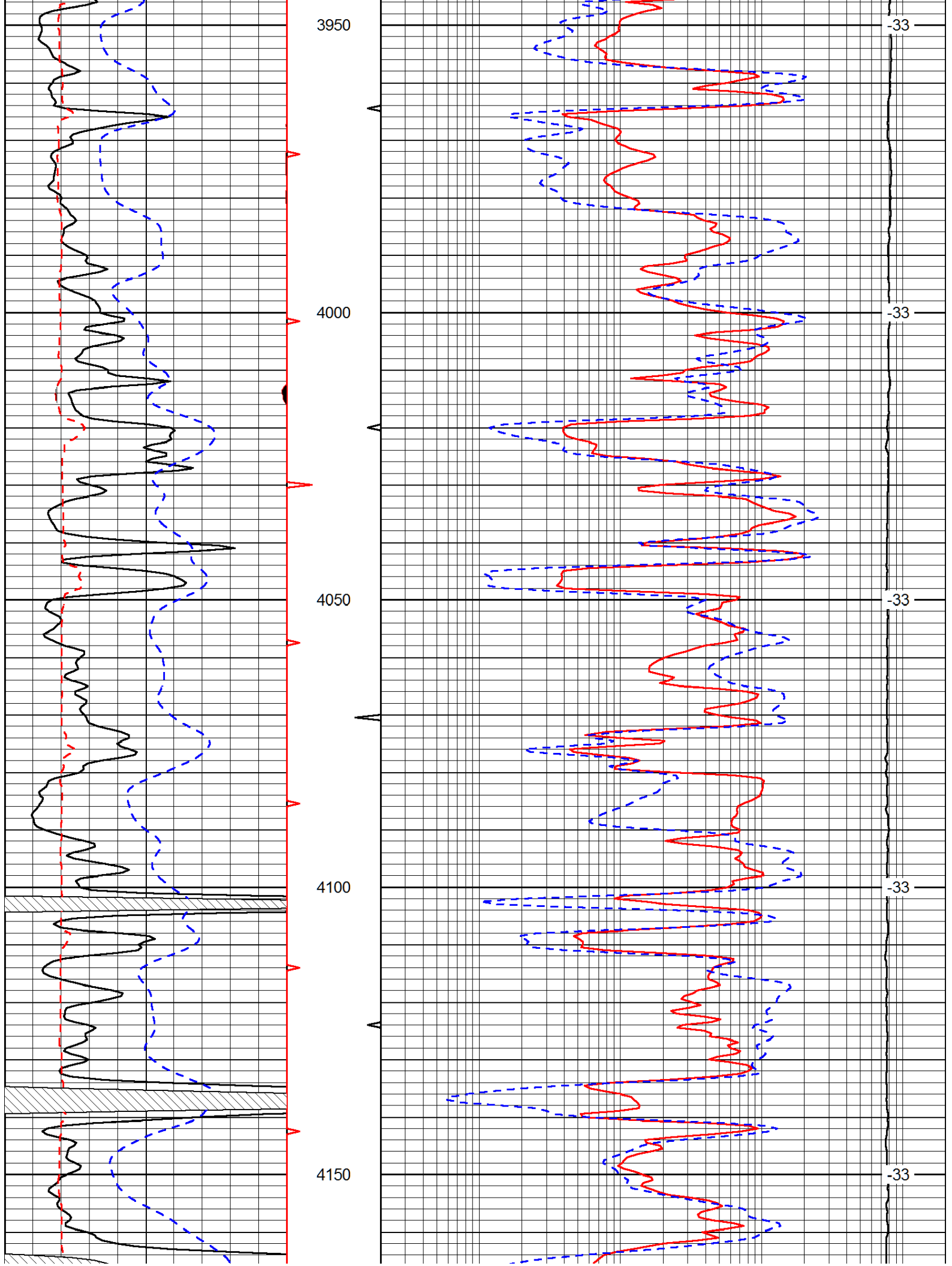
0	Gamma Ray (GAPI)	150
6	SCAL (in)	16
-200	sp (mV)	0

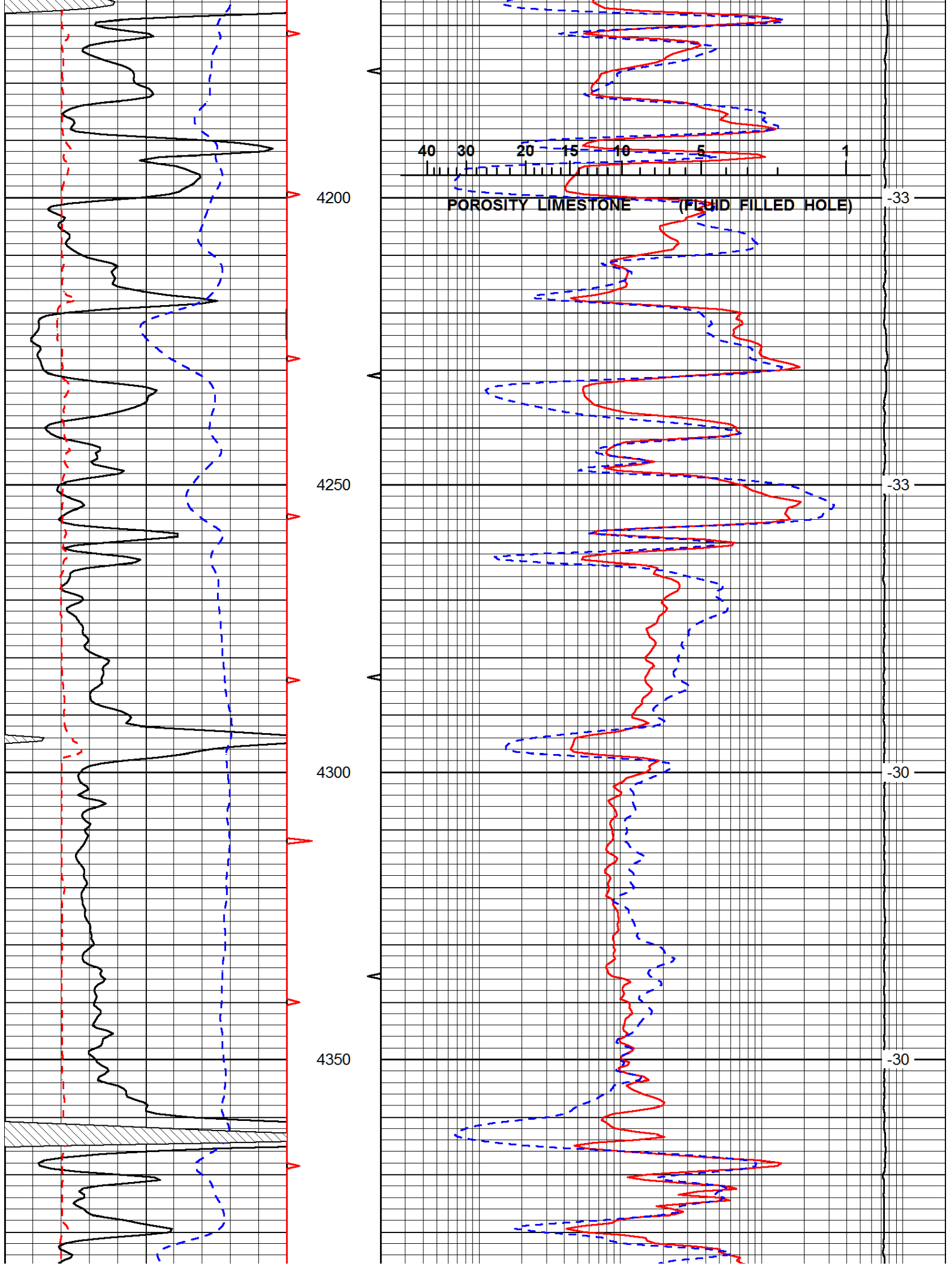
0.2	LGRD (Ohm-m)	2000
560	SWNC (NAPI)	2160
15000	Line Tension (lb)	0

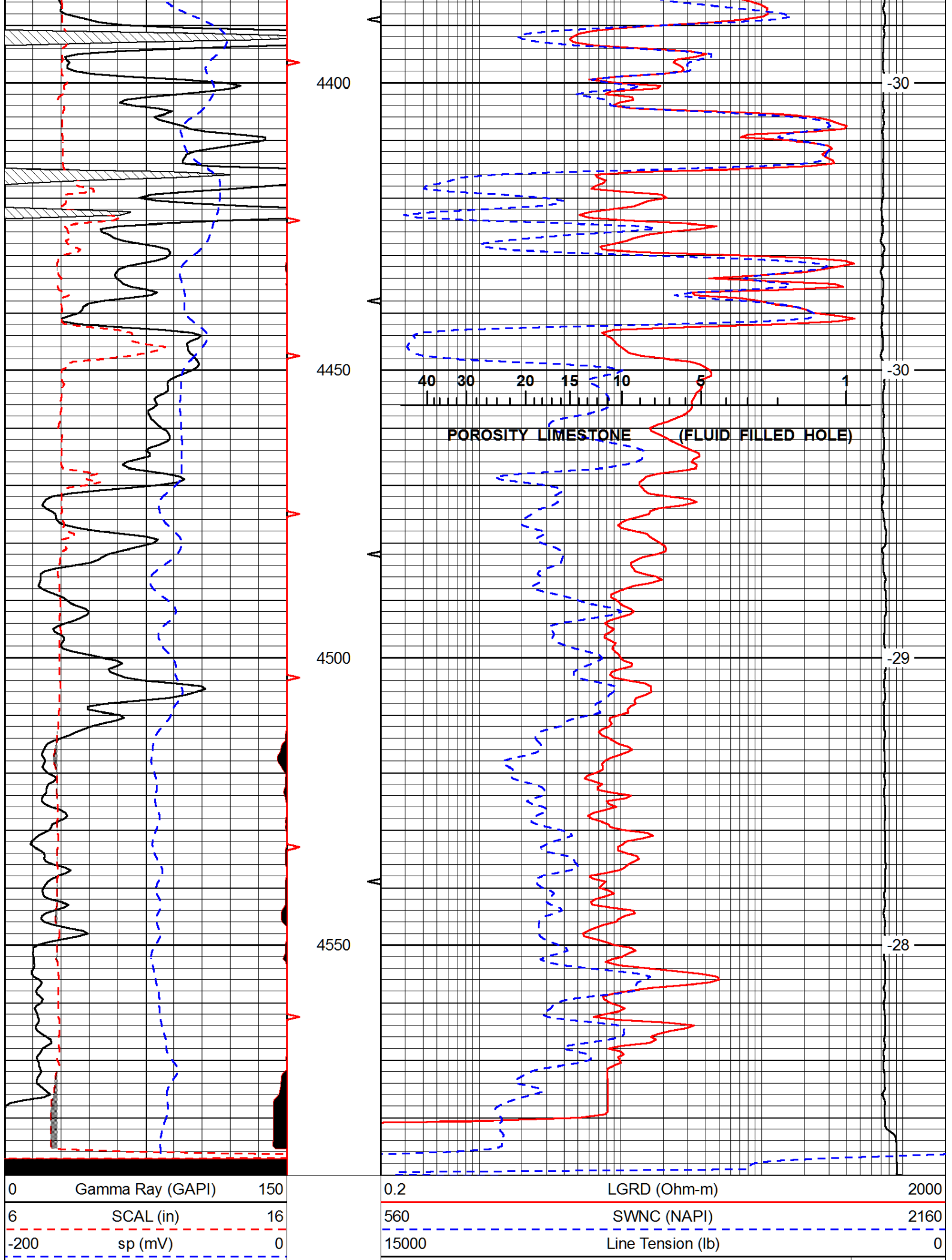
LSPD
(ft/min)











4400

-30

4450

-30

4500

-29

4550

-28

40 30 20 15 10 5 1

POROSITY LIMESTONE (FLUID FILLED HOLE)

0	Gamma Ray (GAPI)	150
6	SCAL (in)	16
-200	sp (mV)	0

0.2	LGRD (Ohm-m)	2000
560	SWNC (NAPI)	2160
15000	Line Tension (lb)	0

