



**COMPLETION  
& PRODUCTION  
SERVICES CO.**

**MICRO  
LOG**

Company L.D. DRILLING, INC.  
Well 1-2 ANDRESS "B"  
Field WILDCAT  
County STAFFORD State KANSAS

Company L.D. DRILLING, INC.  
Well 1-2 ANDRESS "B"  
Field WILDCAT  
County STAFFORD  
State KANSAS

Location: API #: 15-185-23787-00-00  
SEC 2 TWP 21S RGE 13W  
SW - SE - NE  
2310' FSL & 990' FEL  
GROUND LEVEL Elevation 1860  
Log Measured From KELLY BUSHING 5' A.G.L.  
Drilling Measured From KELLY BUSHING  
Other Services  
CNL/CDL  
DIL  
Elevation  
K.B. 1865  
D.F. 1863  
G.L. 1860

Date	02/07/2013
Run Number	TW0
Depth Driller	3630
Depth Logger	3635
Bottom Logged Interval	3633
Top Log Interval	2700
Casing Driller	384
Casing Logger	386
Bit Size	7.875
Type Fluid in Hole	CHEMICAL MUD
Density / Viscosity	9.5 / 56
pH / Fluid Loss	8.5 / 8.8
Source of Sample	FLOWLINE
Rim @ Meas. Temp	.65 @ 76F
Rmf @ Meas. Temp	.52 @ 76F
Rmc @ Meas. Temp	.78 @ 76F
Source of Rmf / Rmc	MEASURED
Rim @ BHT	.43 @ 113F
Time Circulation Stopped	1.5 HOURS
Time Logger on Bottom	7:30 A.M
Maximum Recorded Temperature	113F
Equipment Number	860
Location	HAYS, KS.
Recorded By	MIKE GARRISON
Witnessed By	KIM SHOEMAKER

<<< Fold Here >>>

All interpretations are opinions based on inferences from electrical or other measurements and we cannot and do not guarantee the accuracy or correctness of any interpretation, and we shall not, except in the case of gross or willful negligence on our part, be liable or responsible for any loss, costs, damages, or expenses incurred or sustained by anyone resulting from any interpretation made by any of our officers, agents or employees. These interpretations are also subject to our general terms and conditions set out in our current Price Schedule.

**Comments**

**NABORS COMPLETION & PRODUCTION SERVICES  
785-628-6395**

**THANK YOU FOR YOUR BUSINESS**

**DIRECTIONS: GREAT BEND, KS-SOUTH TO BARTON/STAFFORD COUNTY LINE, 2 1/2 EAST, 1/2 SOUTH,  
WEST INTO**



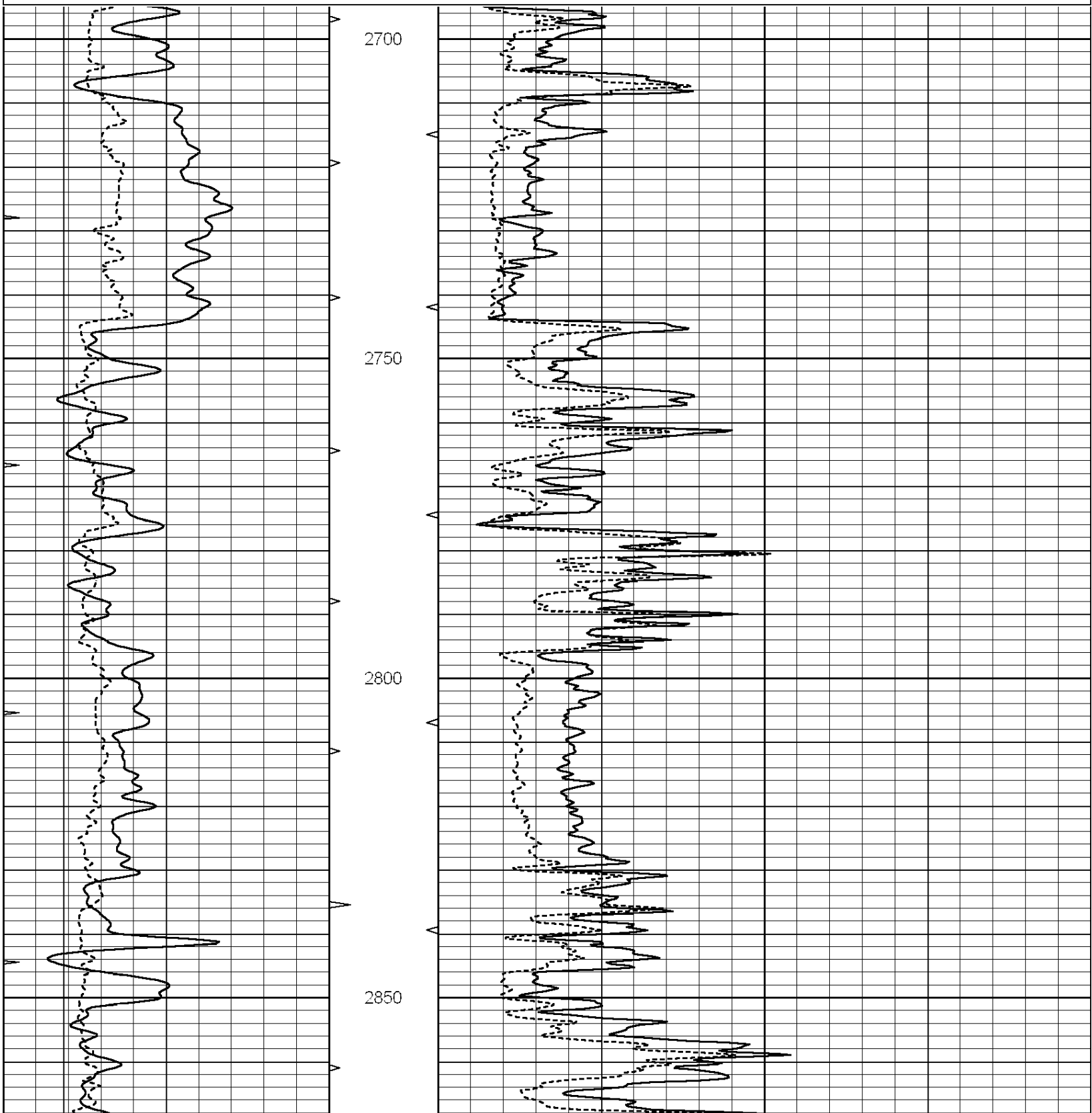
**COMPLETION  
& PRODUCTION**

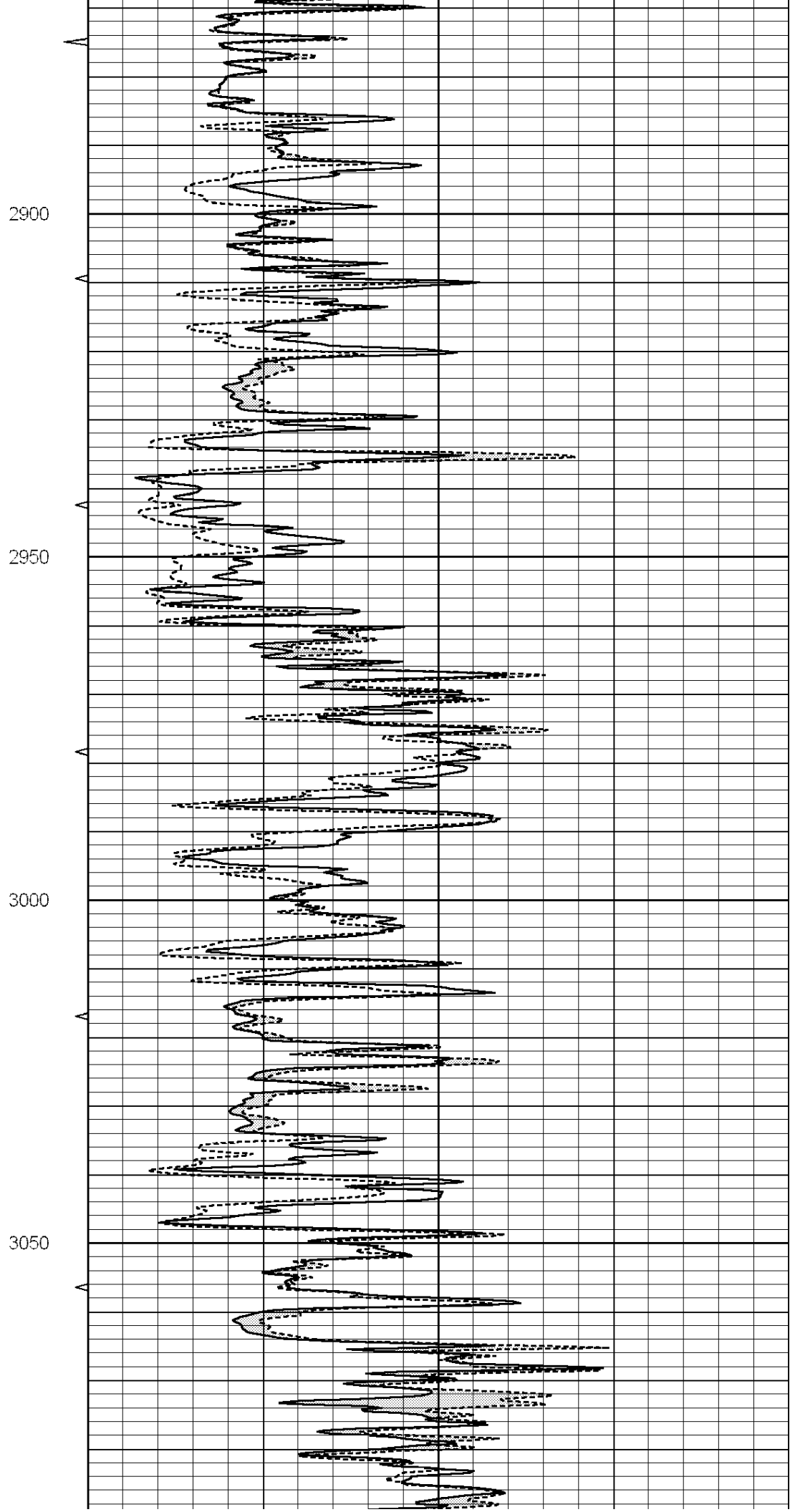
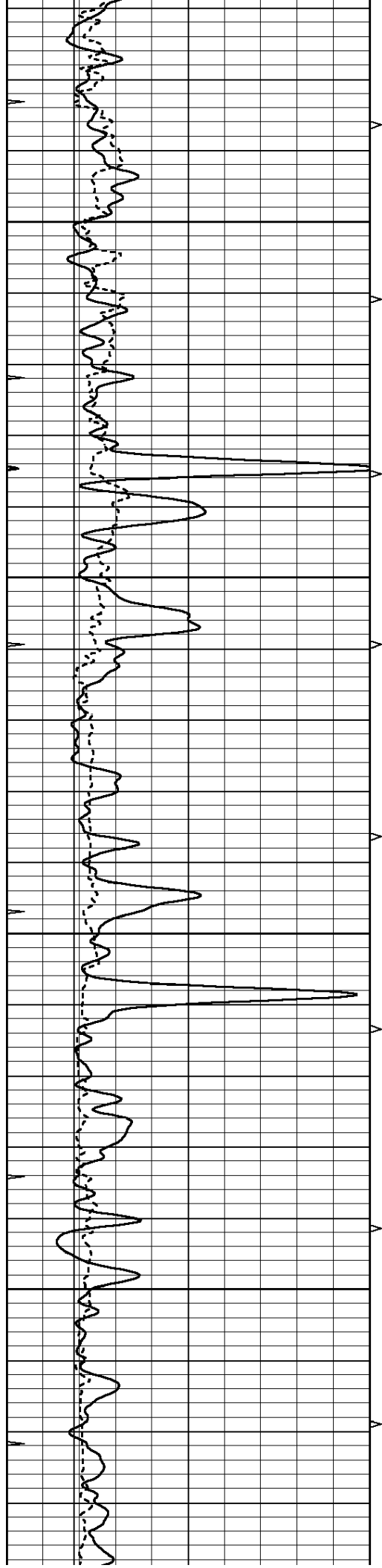
**MAIN SECTION**

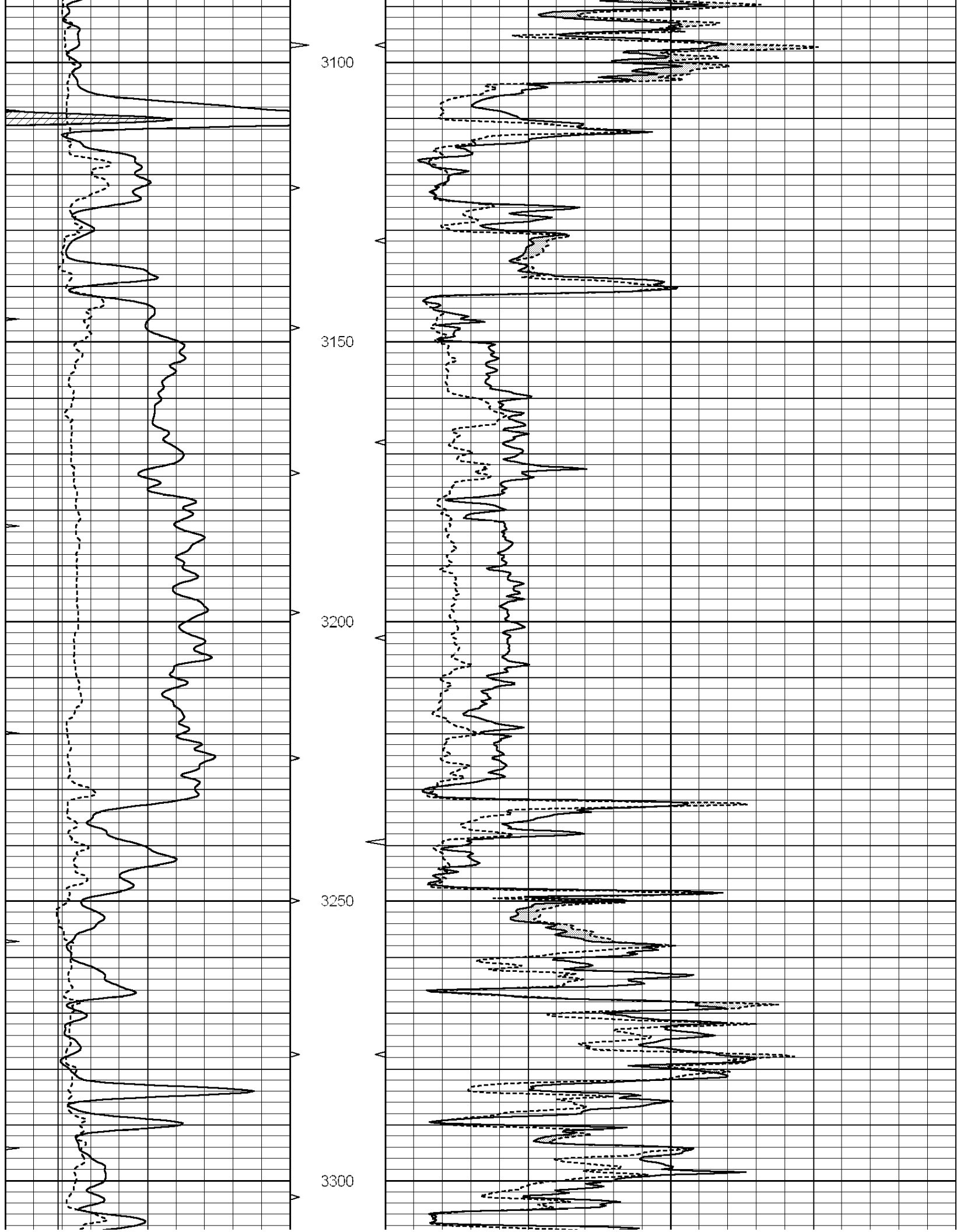
Database File: 010667dildn.db  
 Dataset Pathname: pass8.8  
 Presentation Format: micro  
 Dataset Creation: Thu Feb 07 10:38:02 2013 by Calc Open-Cased 090629  
 Charted by: Depth in Feet scaled 1:240

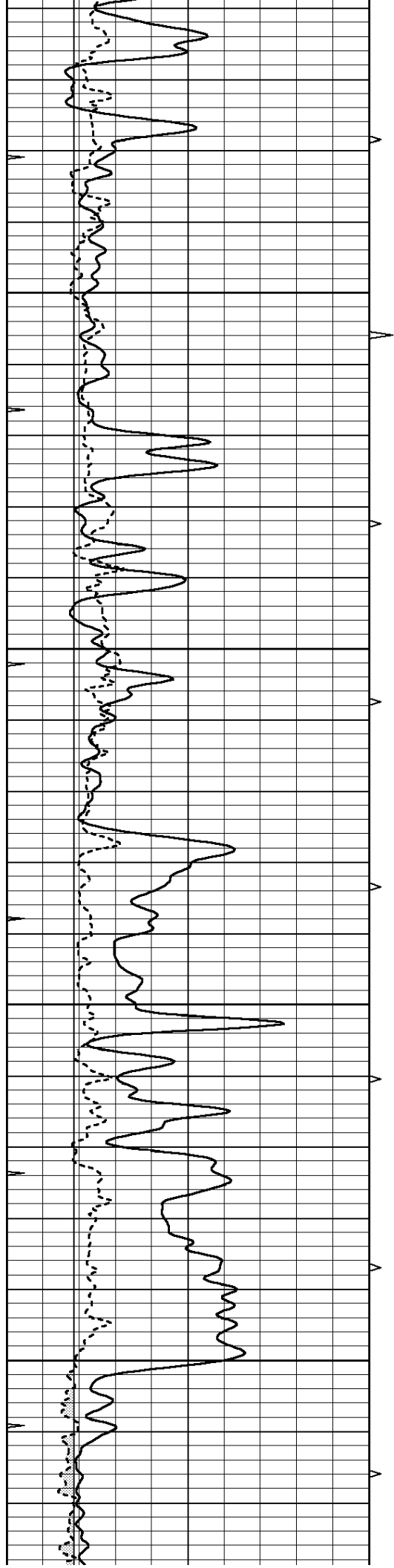
0	GAMMA RAY (GAPI)	150
6	MELCAL (in)	16
0	MINMK	20

0	MEL1.5 (Ohm-m)	40
0	MEL2.0 (Ohm-m)	40







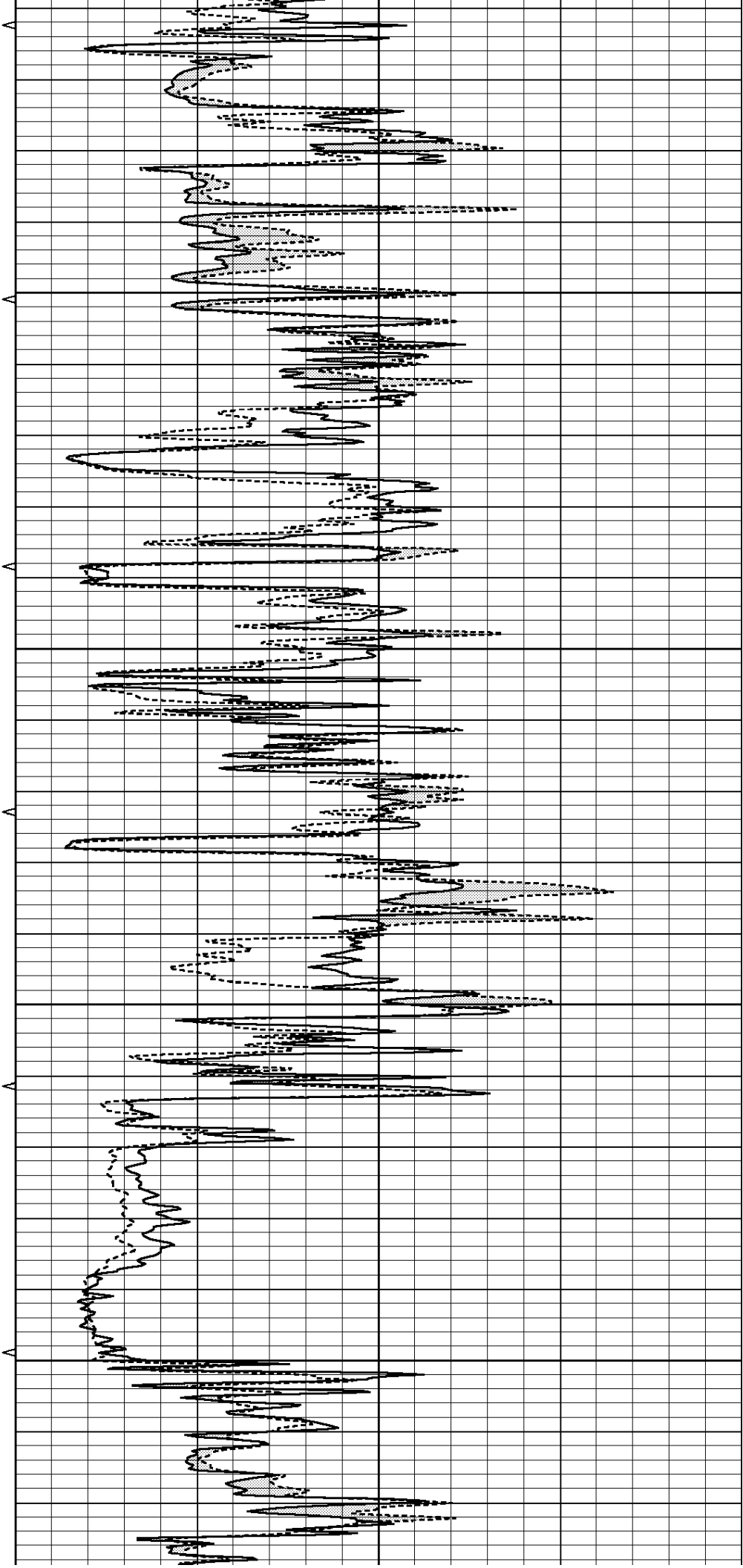


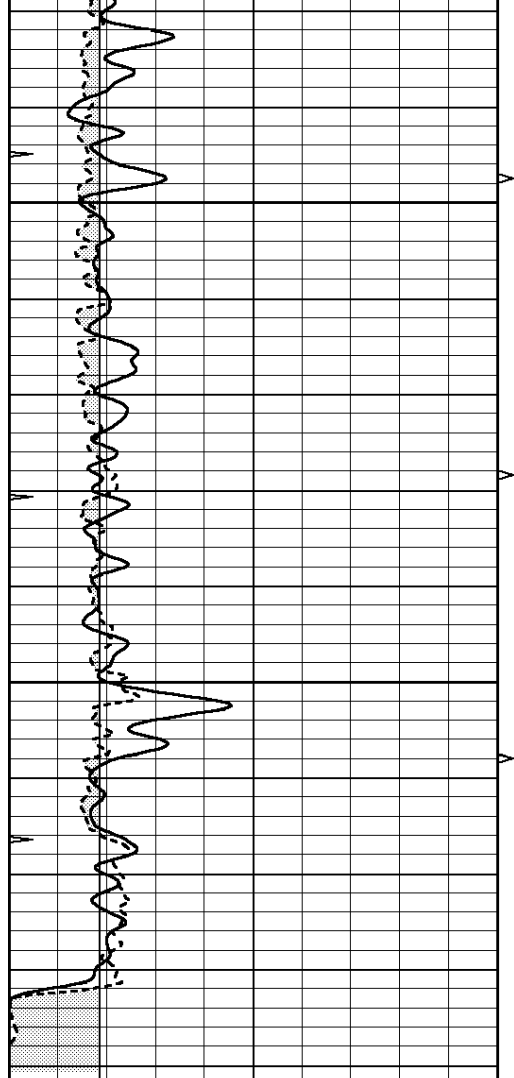
3350

3400

3450

3500

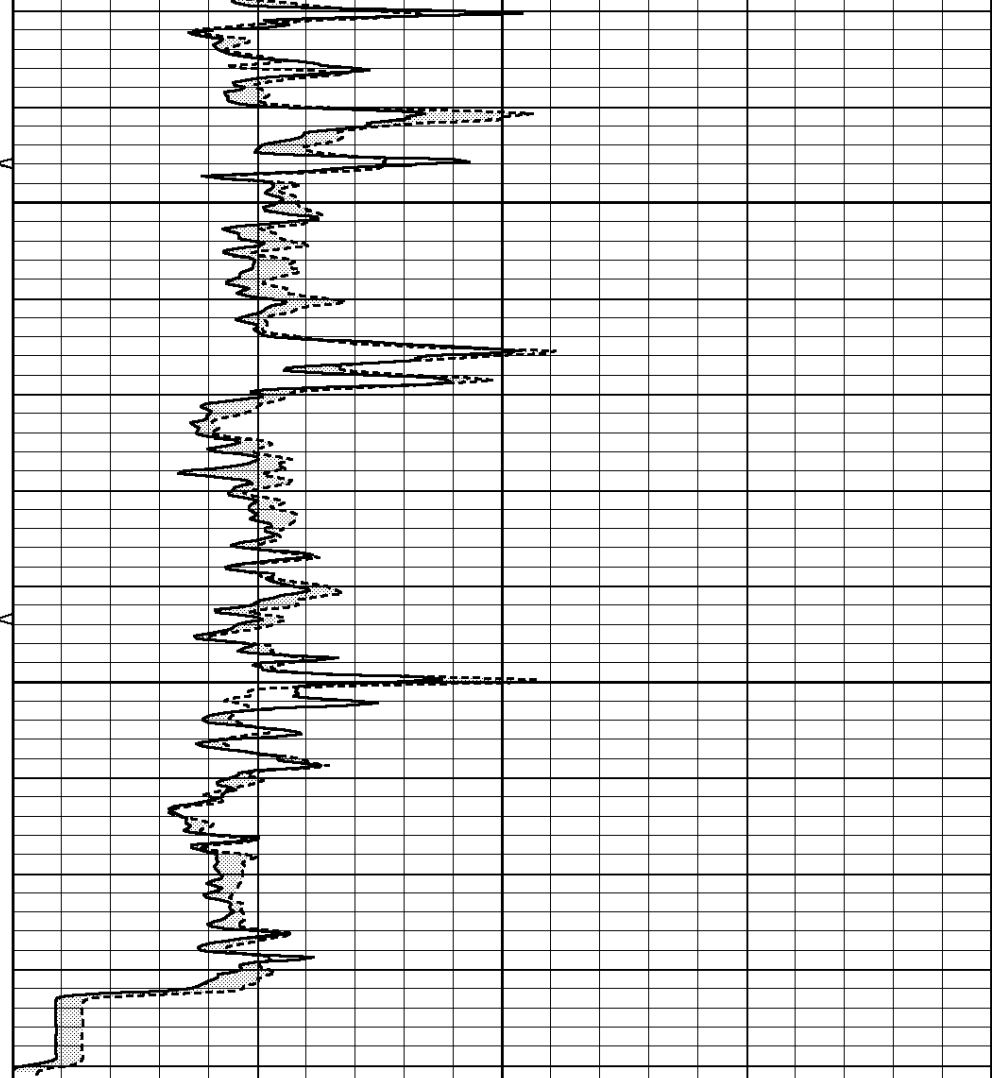




3550

3600

0	GAMMA RAY (GAPI)	150
6	MELCAL (in)	16
0	MINMK	20



0	MEL1.5 (Ohm-m)	40
0	MEL2.0 (Ohm-m)	40

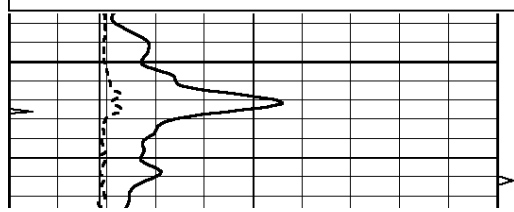


# REPEAT SECTION

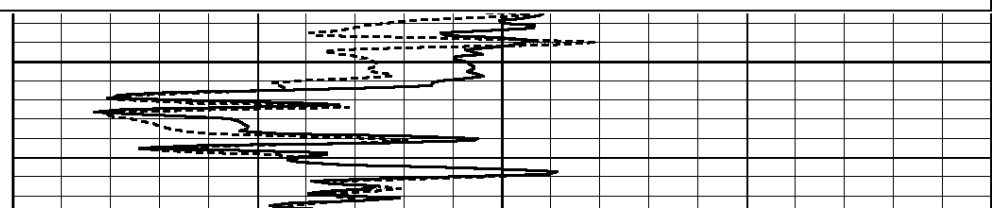
Database File: 010667dildn.db  
 Dataset Pathname: pass7.1  
 Presentation Format: micro  
 Dataset Creation: Thu Feb 07 10:38:58 2013 by Calc Open-Cased 090629  
 Charted by: Depth in Feet scaled 1:240

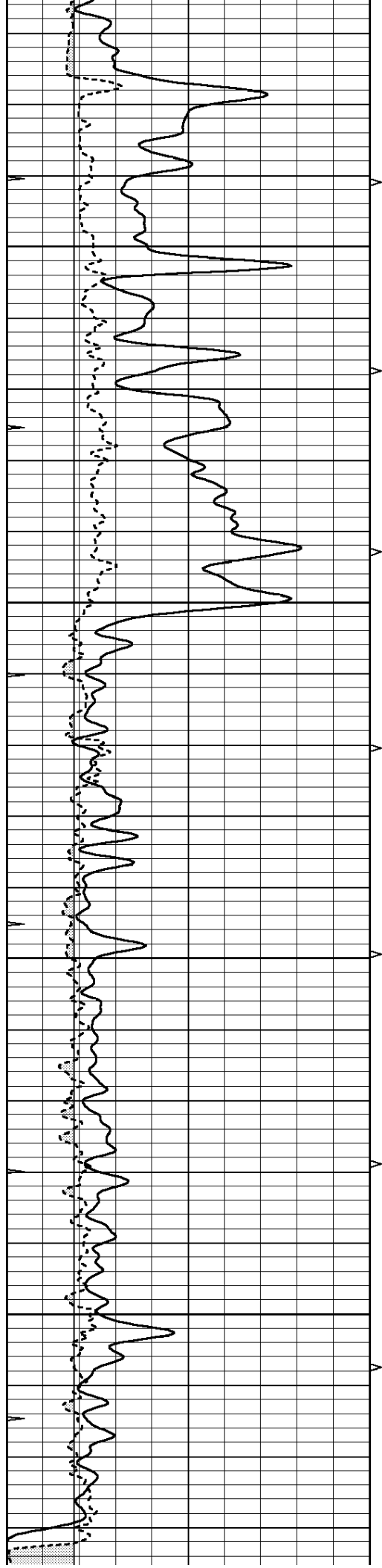
0	GAMMA RAY (GAPI)	150
6	MELCAL (in)	16
0	MINMK	20

0	MEL1.5 (Ohm-m)	40
0	MEL2.0 (Ohm-m)	40



3400





3450

3500

3550

3600

