

Company	American Land And Energy LLC	Other Services	DIL
Well	Werth/Gerstner #1	CDNL	
Field	Gerstner		
County	Ellis		
State	Kansas		
Location:	1325 FSL & 1110 th FWL		
APR #:	15 051 26412		
SEC 24	TMP 14S	RGE 17W	Elevation
Permanent Datum	Ground Level	Elevation	K B 1948
Log Measured From	KB 6 A3L	Elevation	D.L. 1947
Drilling Measured From	KB	Elevation	G.L. 1947
Date	11-27-12		
Run/Lumber	Two		
Depth Driller	3551'		
Bottom Logger	3549'		
Top Log Interval	2907'		
Casing Driller	1093'		
Casing Logger	1093'		
Bit Size	7 7/8"		
Type Fluid in Hole	Chemical Mud		
Density / Viscosity	9.4/56		
pH / Fluid Loss	8.5/6.6		
Source of Sample	PI		
Rm @ Meas. Temp	3.2@55def		
Rm @ Meas. Temp	2.2@55def		
Source of Rm / Rmc	3.6@55def		
Rm @ BHT	Calculated		
Time Circulation Stopped	15@112def		
Time Lags on Bottom	10.30.0 m		
Maximum Recorded Temperature	12.10.0 m		
Equipment Number	1172 def		
Location	T045		
Recorded By	Hays, KS		
Missed By	Gas Penetration		
Missed By	MR Marc Downing		
Missed By	MR Gary Leiber		

<<< Fold Here >>>

All interpretations are opinions based on inferences from electrical or other measurements and we cannot and do not guarantee the accuracy or correctness of any interpretation, and we shall not, except in the case of gross or willful negligence on our part, be liable or responsible for any loss, costs, damages, or expenses incurred or sustained by anyone resulting from any interpretation made by any of our officers, agents or employees. These interpretations are also subject to our general terms and conditions set out in our current Price Schedule.

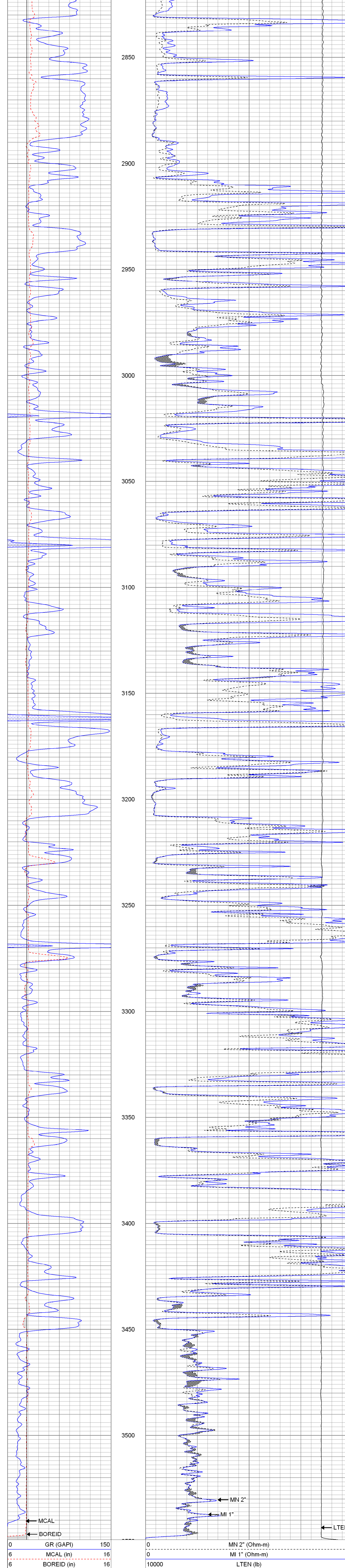
Comments

Thank you for using The Perforators LLC
Hays, KS (785) 621-4604

The Perforators LLC **Main Pass**

Database File: werthgers.db
 Dataset Pathname: pass4
 Presentation Format: kml
 Dataset Creation: Tue Nov 27 01:54:37 2012 by Log Open-Cased 100827
 Charted by: Depth in Feet scaled 1:240

0	GR (GAPI)	150	0	MN 2" (Ohm-m)	20
6	MCAL (in)	16	0	MI 1" (Ohm-m)	20
6	BOREID (in)	16	10000	LTEN (lb)	0

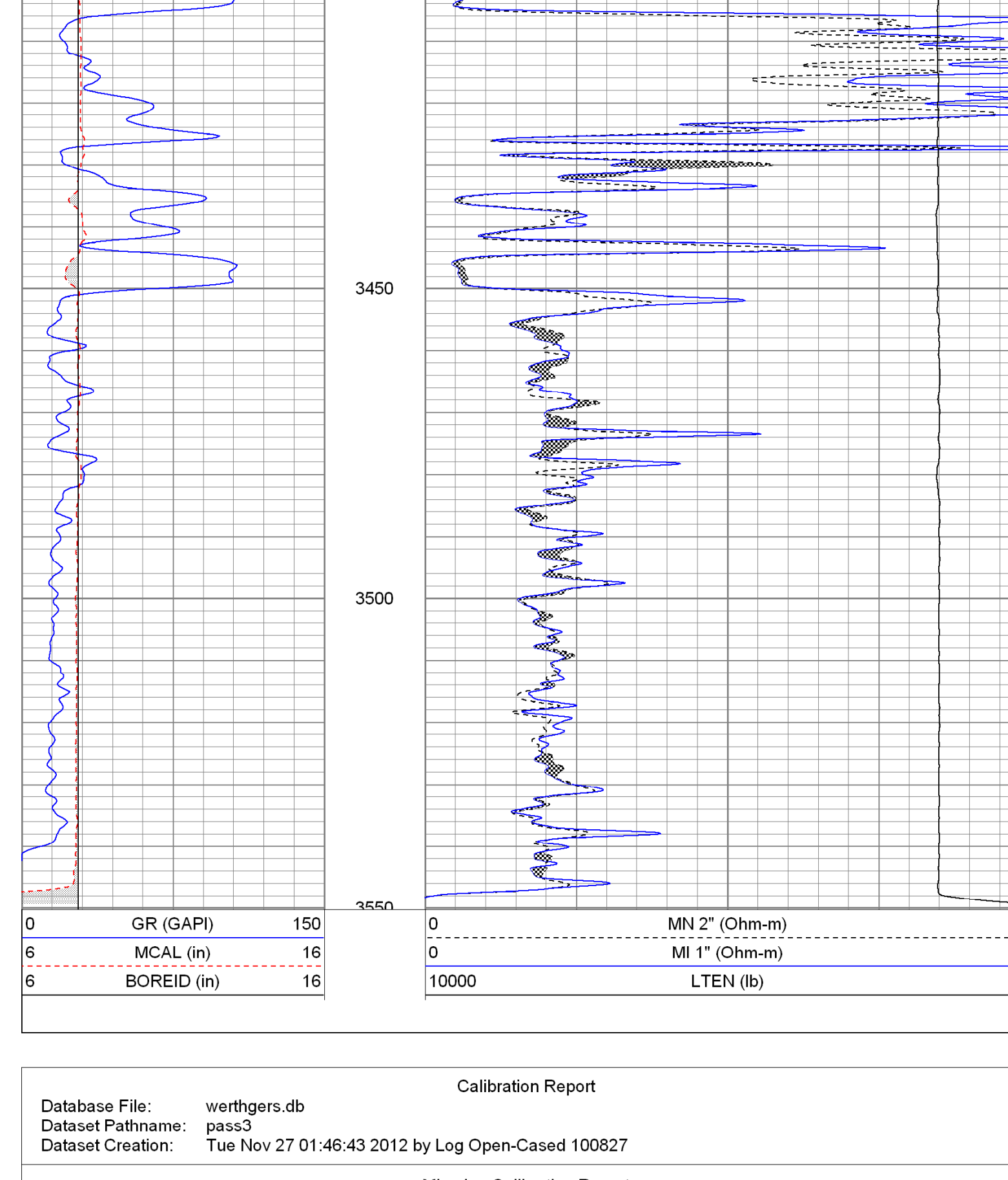


0	GR (GAPI)	150	0	MN 2" (Ohm-m)	20
6	MCAL (in)	16	0	MI 1" (Ohm-m)	20
6	BOREID (in)	16	10000	LTEN (lb)	0

The Perforators LLC **Repeat Pass**

Database File: werthgers.db
 Dataset Pathname: pass3
 Presentation Format: kml
 Dataset Creation: Tue Nov 27 01:46:43 2012 by Log Open-Cased 100827
 Charted by: Depth in Feet scaled 1:240

0	GR (GAPI)	150	0	MN 2" (Ohm-m)	20
6	MCAL (in)	16	0	MI 1" (Ohm-m)	20
6	BOREID (in)	16	10000	LTEN (lb)	0



Calibration Report

Database File: werthgers.db
 Dataset Pathname: pass3
 Dataset Creation: Tue Nov 27 01:46:43 2012 by Log Open-Cased 100827

Microlog Calibration Report

Serial-Model: 012-Pengo
 Performed: Tue Sep 18 04:01:09 2012

	Readings			References		Results	
	Zero	Cal		Zero	Cal	m	b
Normal	0.0032	0.4326	V	0.0000	10.0000	Ohm-m	23.2921
Inverse	0.0036	0.5585	V	0.0000	7.50000	Ohm-m	-0.0487
Caliper	3.2460	6.8378	V	8.7500	15.0000	in	1.7401

Gamma Ray Calibration Report

Serial Number: 2001
 Tool Model: OH
 Performed: Thu Nov 22 09:34:58 2012

Calibrator Value: 1.0 GAPI

Background Reading: 0.0 cps
 Calibrator Reading: 1.0 cps

Sensitivity: 0.2300 GAPI/cps

Sensor	Offset (ft)	Schematic	Description	Len (ft)	OD (in)	Wt (lb)
GR	8.13		GR-OH (2001)	3.56	3.25	40.00
MN MI MCAL	1.30 1.30 1.30		ML-Pengo (012)	6.96	3.50	100.00

Dataset: werthgers.db:field/well/run1/pass3

Total Length: 10.53 ft

Total Weight: 140.00 lb

O.D.: 3.50 in