

MIDWEST SURVEYS
 LOGGING - PERFORATING - COMSUL LOGGING SERVICES
 P.O. Box 68, Osawatomie, KS 66064
 913.755.2128

GAMMA RAY / NEUTRON / CCL

File No. Company **Dennis & Peggy Hodges**
 Well **Hodges No - 4**

Field **Finnerty**
 County **Coffey** State **Kansas**

Location **1910' FNL & 350' FWL**
 Other Services **Perforate**

Sec. 12 Twp. 21s Rge. 13e Elevation **1137'**
 Permanent Datum **GL** KB NA
 Log Measured From **GL** D.F. NA
 Drilling Measured From **GL** G.L. 1137'

Date **10-25-2012**
 Run Number **One**

Depth Logged **1808.8**
 Bottom Logged **1807.8**
 Top Log Interval **500.0**
 Fluid Level **Full**

Type Fluid **Water**
 Density / Viscosity **NA**
 Salinity / PPM Cl **NA**
 Max Recorded Temp **NA**
 Estimated Cement Top **0.0**

Equipment No. **102** Location **Osawatomie**
 Recorded By **Steve Winkisch**
 Witnessed By **Dennis Hodges**

BORE-HOLE RECORD
 RUN No. BIT FROM TO SIZE WGT. FROM TO
 One 12.25" 150.0 150.0 8.625" 0.0 150.0
 Two 7.875" 150.0 1820.0 5.50" 0.0 1811.62

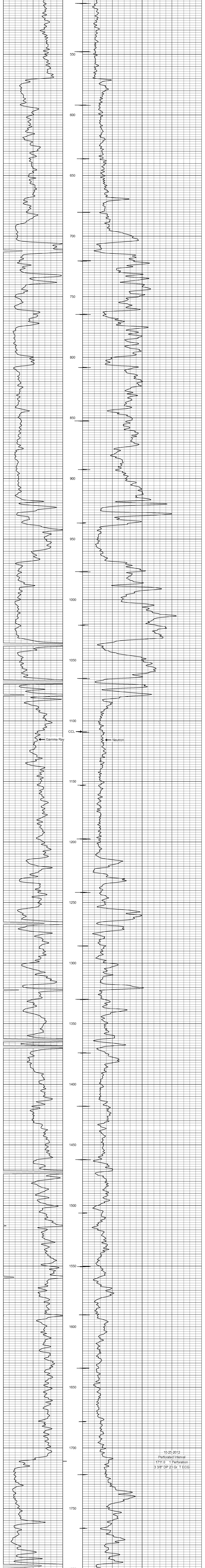
<<< Fold Here >>>

All interpretations are opinions based on inferences from electrical or other measurements and we cannot and do not guarantee the accuracy or correctness of any interpretation, and we shall not, except in the case of gross or willful negligence on our part, be liable or responsible for any loss, costs, damages, or expenses incurred or sustained by anyone resulting from any interpretation made by any of our officers, agents or employees. These interpretations are also subject to our general terms and conditions set out in our current Price Schedule.

Comments

Drilling Contractor :
Three Rivers Drilling Company

Database File: hedges4.db
 Dataset Pathname: pass1
 Presentation Format: gr-n-ccl
 Dataset Creation: Thu Oct 25 10:47:34 2012 by Log SCH 111116
 Charted by: Depth in Feet scaled 1:240



10-25-2012
 Perforated Interval
 1711.0 1 Perforation
 3 3/8" DP 23 Gr. T ECG