

**COMPLETION
& PRODUCTION
SERVICES CO.**

**MICRO
LOG**

Company EDISON OPERATING CO., LLC
Well ARMBRISTER #1-1
Field ELLIS
County TREGO State KANSAS

Company EDISON OPERATING CO., LLC
Well ARMBRISTER #1-1
Field ELLIS
County TREGO
State KANSAS

Location: API #: 15-195-22779
825' FNL & 2310' FWL
SEC 1 TWP 13S RGE 21W
Permanent Datum GROUND LEVEL Elevation 2171
Log Measured From KELLY BUSHING 5' A.G.L.
Drilling Measured From KELLY BUSHING
Other Services
CDL/CNL/PE
DIL/SONIC
Elevation
K.B. 2176
D.F.
G.L. 2171

Date	10-6-12
Run Number	TW0
Depth Driller	3900
Depth Logger	3900
Bottom Logged Interval	3882
Top Log Interval	3000
Casing Driller	260
Casing Logger	259
Bit Size	7.875
Type Fluid in Hole	CHEMICAL MUD
Density / Viscosity	9.3 / 55
pH / Fluid Loss	10.5 / 7.6
Source of Sample	FLOWLINE
Rim @ Meas. Temp	1.10 @ 60F
Rmf @ Meas. Temp	0.83 @ 60F
Rmc @ Meas. Temp	1.32 @ 60F
Source of Rmf / Rmc	MEASURED
Rim @ BHT	.580 @ 114F
Time Circulation Stopped	2 HOURS
Time Logger on Bottom	1.45 A.M.
Maximum Recorded Temperature	114F
Equipment Number	860
Location	HAYS, KS.
Recorded By	RUPP
Witnessed By	ADAM KENNEDY

<<< Fold Here >>>

All interpretations are opinions based on inferences from electrical or other measurements and we cannot and do not guarantee the accuracy or correctness of any interpretation, and we shall not, except in the case of gross or willful negligence on our part, be liable or responsible for any loss, costs, damages, or expenses incurred or sustained by anyone resulting from any interpretation made by any of our officers, agents or employees. These interpretations are also subject to our general terms and conditions set out in our current Price Schedule.

Comments

NABORS COMPLETION & PRODUCTION CO.
THANK YOU FOR YOUR BUSINESS
DIRECTIONS: ELLIS W TO RD. #400, 2N TO RD. M, 1/2E, S INTO.



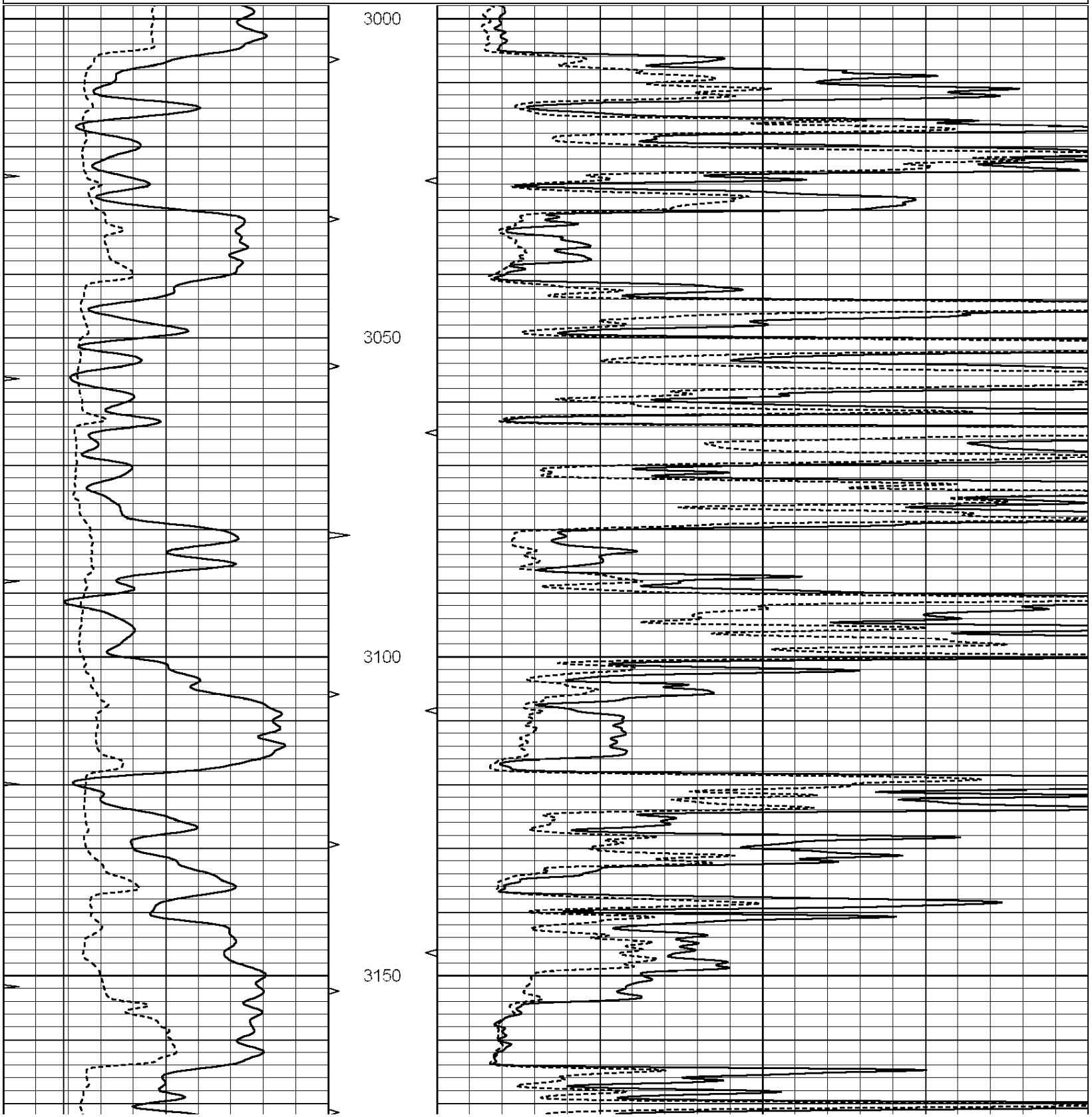
**COMPLETION
& PRODUCTION**

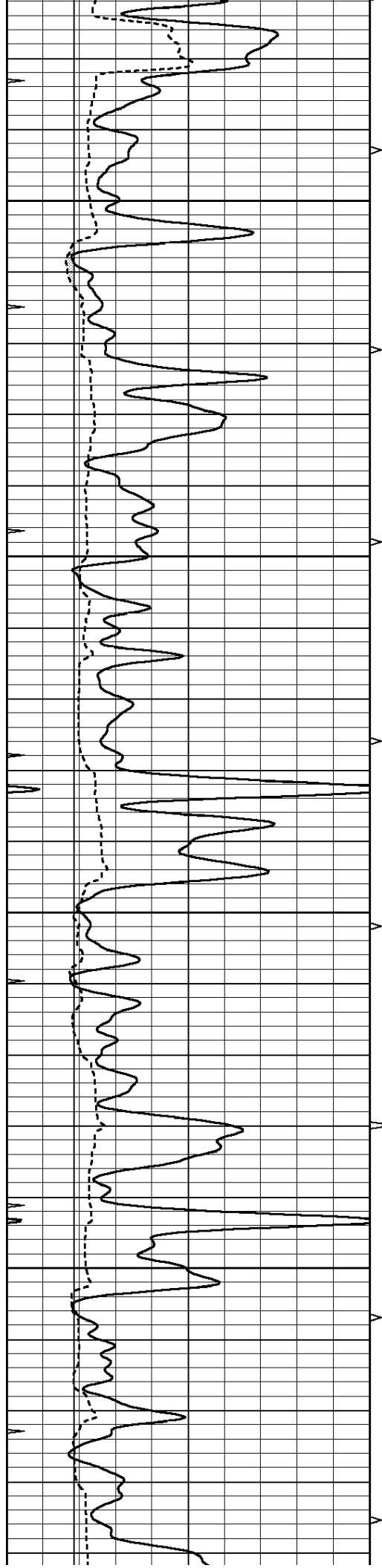
MAIN SECTION

Database File: 009928pdn.db
 Dataset Pathname: pass6.1A
 Presentation Format: micro
 Dataset Creation: Sat Oct 06 05:25:46 2012
 Charted by: Depth in Feet scaled 1:240

0	GAMMA RAY (GAPI)	150
6	MELCAL (in)	16
0	MINMK	20

0	MEL1.5 (Ohm-m)	40
0	MEL2.0 (Ohm-m)	40



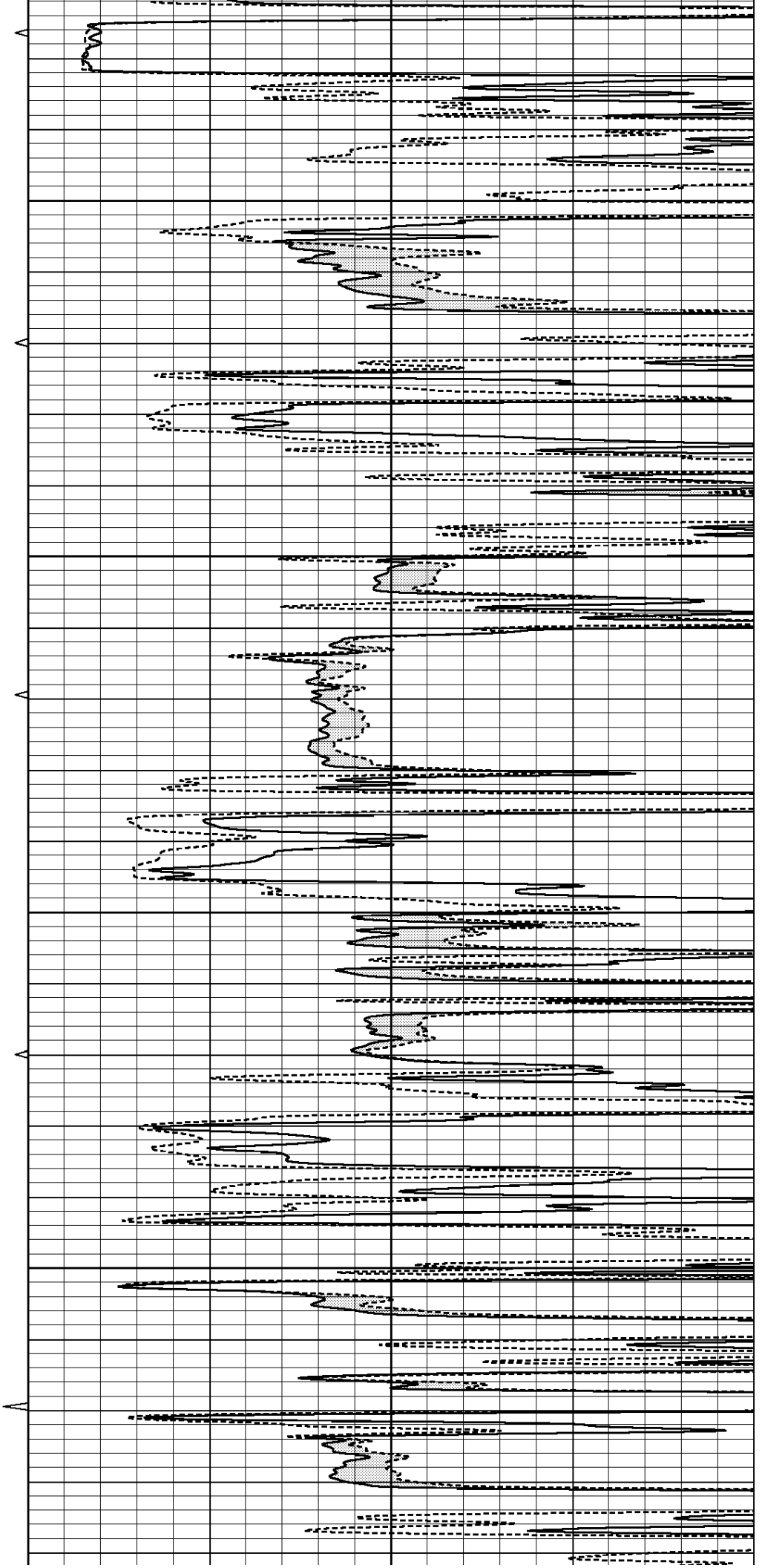


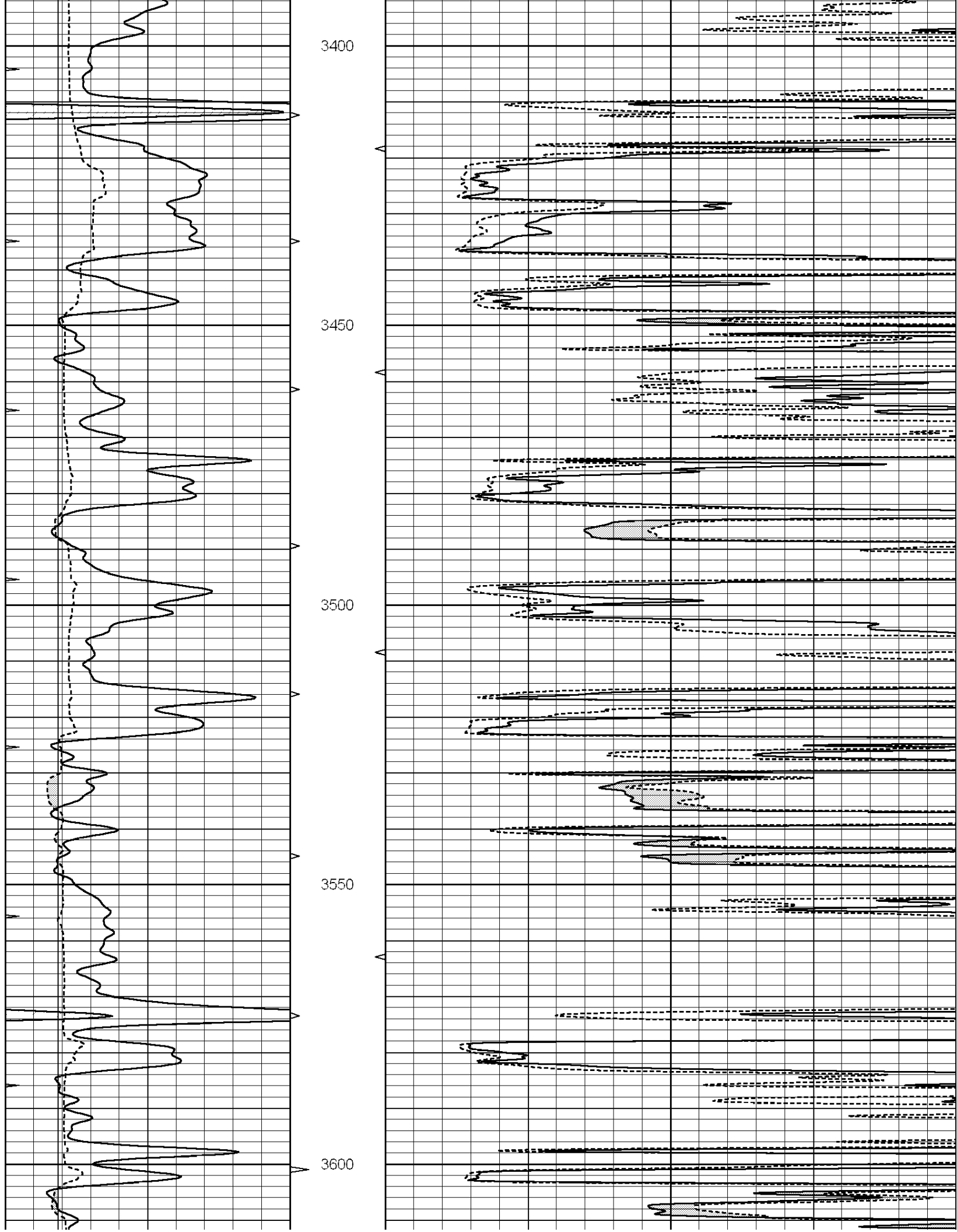
3200

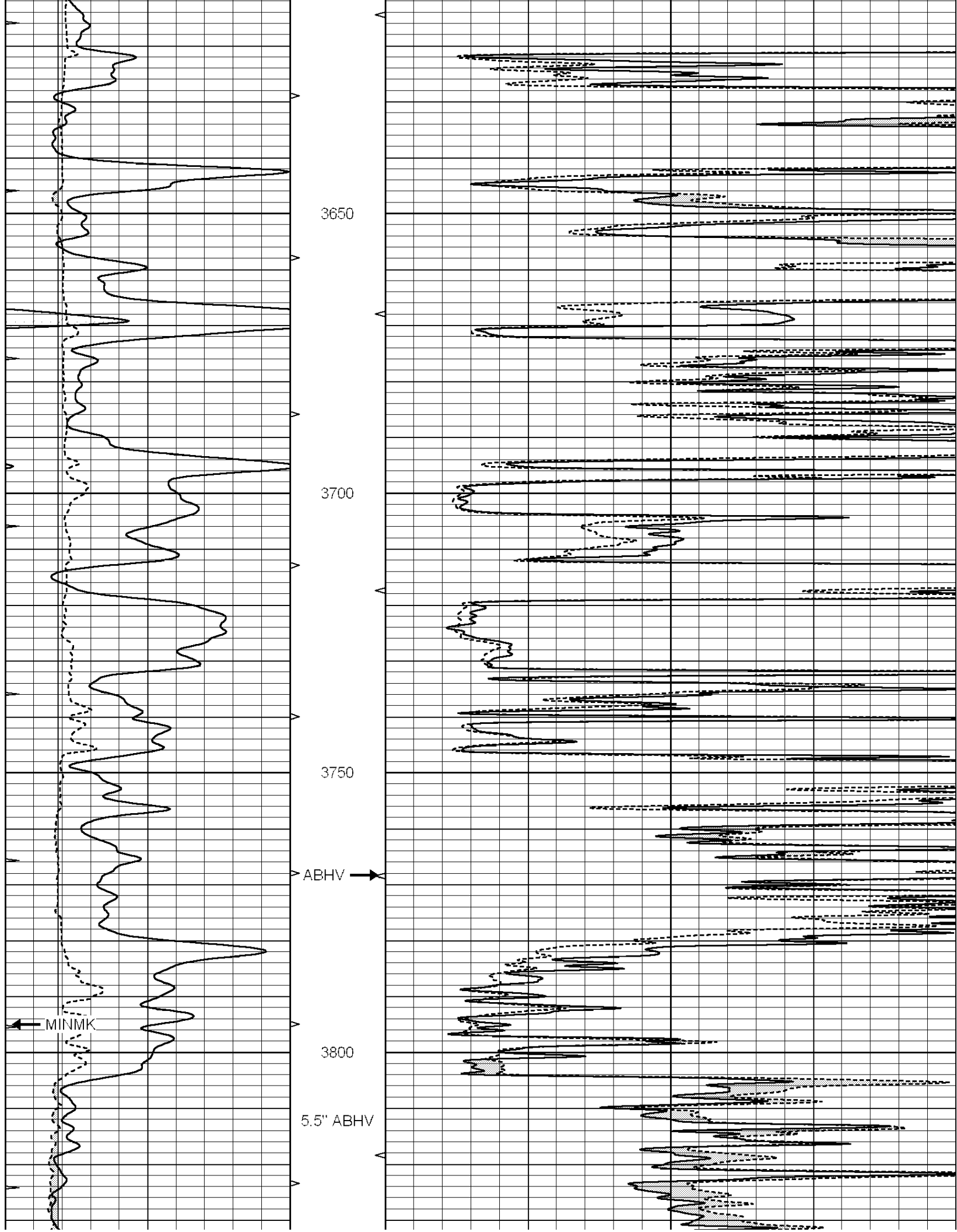
3250

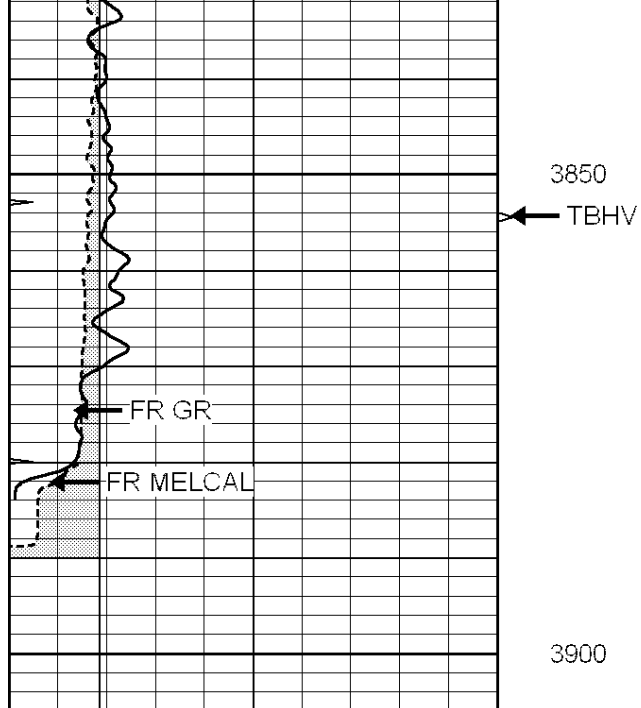
3300

3350

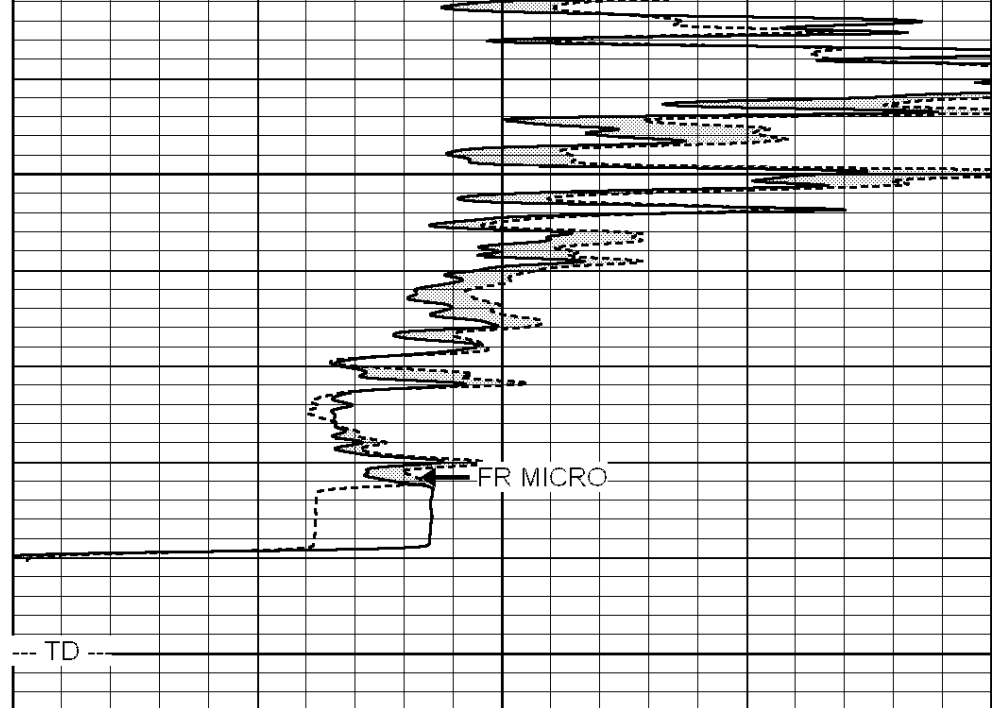








0	GAMMA RAY (GAPI)	150
6	MELCAL (in)	16
0	MINMK	20



0	MEL1.5 (Ohm-m)	40
0	MEL2.0 (Ohm-m)	40

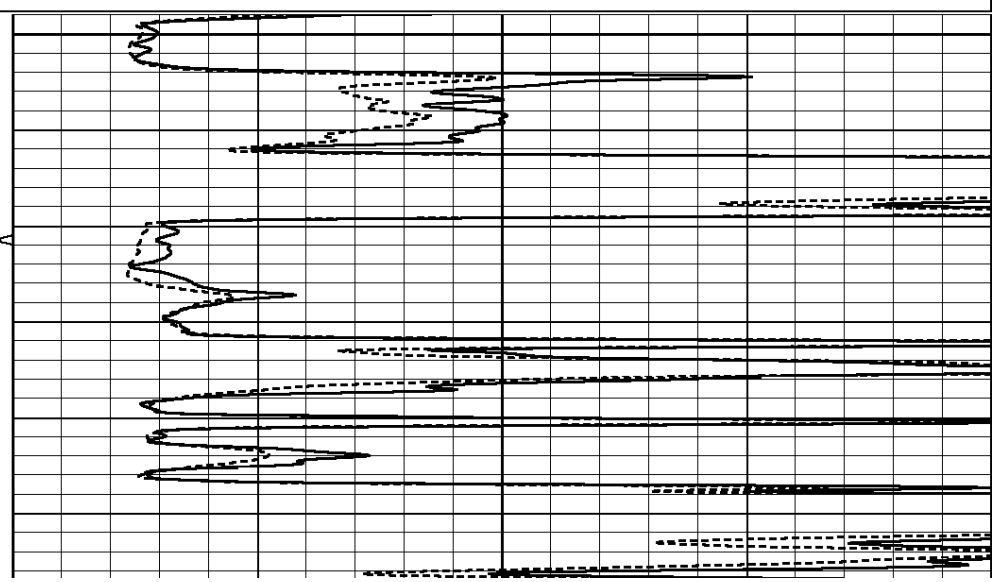
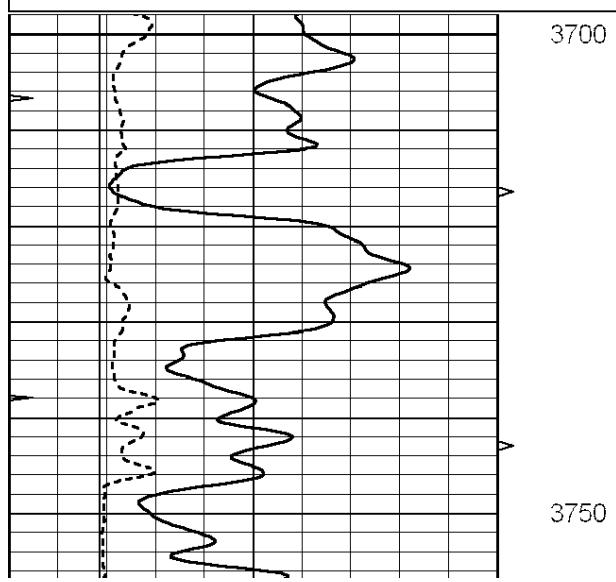


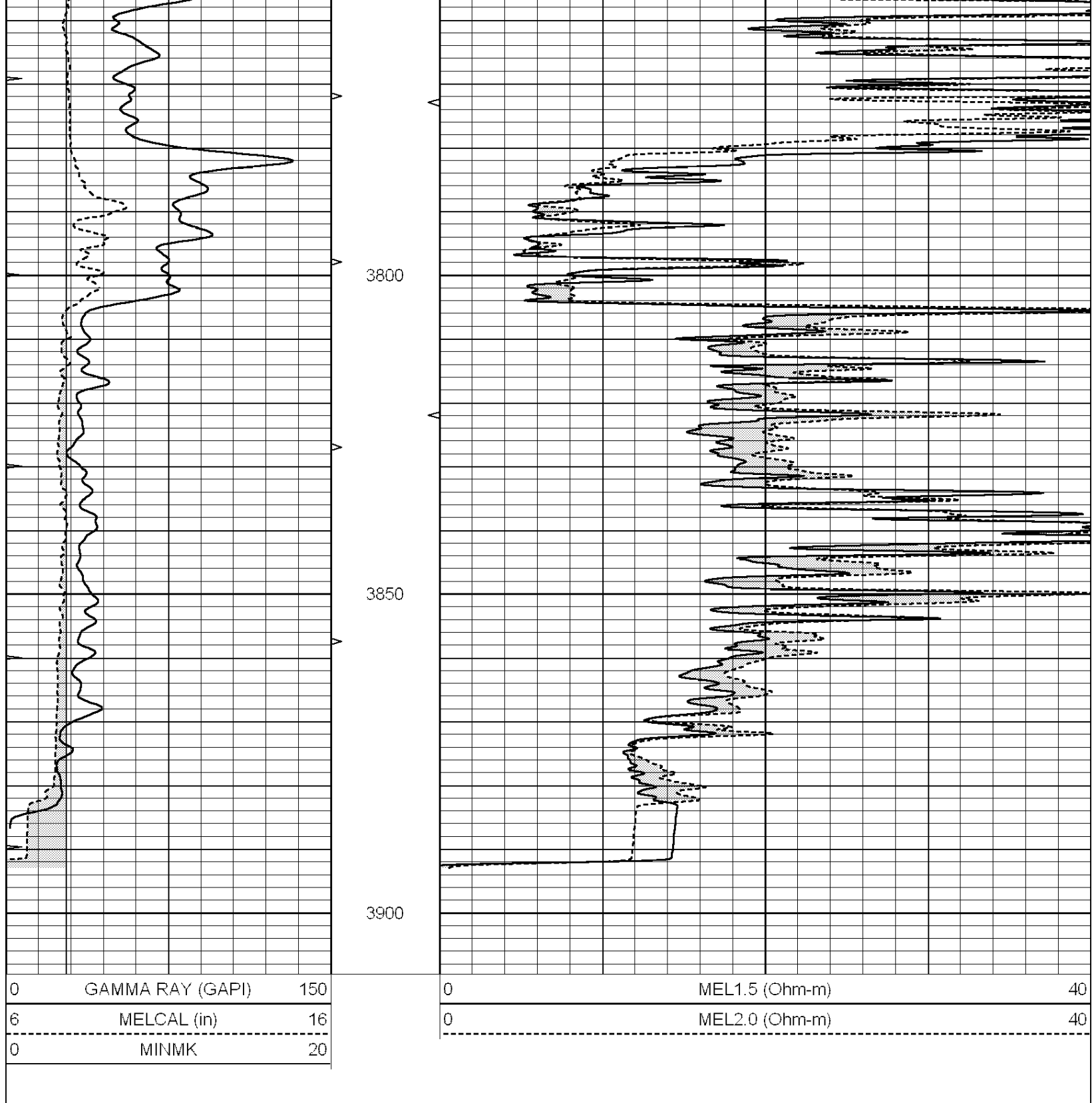
REPEAT SECTION

Database File: 009928pdn.db
 Dataset Pathname: pass4.1
 Presentation Format: micro
 Dataset Creation: Sat Oct 06 03:49:52 2012 by Calc Open-Cased 090629
 Charted by: Depth in Feet scaled 1:240

0	GAMMA RAY (GAPI)	150
6	MELCAL (in)	16
0	MINMK	20

0	MEL1.5 (Ohm-m)	40
0	MEL2.0 (Ohm-m)	40





Calibration Report

Database File: 009928pdn.db
 Dataset Pathname: pass6.1A
 Dataset Creation: Sat Oct 06 05:25:46 2012

MICRO Calibration Report

Serial Number: MICRO4
 Tool Model: PROBE
 Performed: Sat Oct 06 04:24:17 2012

Caliper Calibration: Gain=1.971 Offset=-3.191

References	Low Cal	High Cal
Readings	7.550	13.000
	5.449	8.214
1.5" Calibration:	Gain=47.000	Offset=-0.700
References	Low Cal	High Cal
Readings	0.000	20.000
	0.009	1.541
2" Calibration:	Gain=42.000	Offset=0.600
References	Low Cal	High Cal
Readings	0.000	20.000
	0.004	1.198
Gamma Ray Calibration Report		
Serial Number:	GR5	
Tool Model:	OPEN	
Performed:	Sat Oct 06 03:45:07 2012	
Calibrator Value:	1.0	GAPI
Background Reading:	0.0	cps
Calibrator Reading:	1.0	cps
Sensitivity:	0.7200	GAPI/cps