

**COMPLETION
& PRODUCTION
SERVICES CO.**

**SONIC
LOG**

Company EDISON OPERATING CO., LLC
Well ARMBRISTER #1-1
Field ELLIS
County TREGO State KANSAS

Company EDISON OPERATING CO., LLC
Well ARMBRISTER #1-1
Field ELLIS
County TREGO
State KANSAS

Location: API #: 15-195-22779
825' FNL & 2310' FWL
SEC 1 TWP 13S RGE 21W
Permanent Datum GROUND LEVEL Elevation 2171
Log Measured From KELLY BUSHING 5' A.G.L.
Drilling Measured From KELLY BUSHING
Other Services
CDL/CNL/PE
DIL/MEL
Elevation
K.B. 2176
D.F.
G.L. 2171

Date	10-6-12
Run Number	TW0
Depth Driller	3900
Depth Logger	3900
Bottom Logged Interval	3892
Top Log Interval	250
Casing Driller	260
Casing Logger	259
Bit Size	7.875
Type Fluid in Hole	CHEMICAL MUD
Density / Viscosity	9.3 / 55
pH / Fluid Loss	10.5 / 7.6
Source of Sample	FLOWLINE
Rim @ Meas. Temp	1.10 @ 60F
Rmf @ Meas. Temp	0.83 @ 60F
Rmc @ Meas. Temp	1.32 @ 60F
Source of Rmf / Rmc	MEASURED
Rim @ BHT	.580 @ 114F
Time Circulation Stopped	2 HOURS
Time Logger on Bottom	1.45 A.M.
Maximum Recorded Temperature	114F
Equipment Number	860
Location	HAYS, KS.
Recorded By	RUPP
Witnessed By	ADAM KENNEDY

<<< Fold Here >>>

All interpretations are opinions based on inferences from electrical or other measurements and we cannot and do not guarantee the accuracy or correctness of any interpretation, and we shall not, except in the case of gross or willful negligence on our part, be liable or responsible for any loss, costs, damages, or expenses incurred or sustained by anyone resulting from any interpretation made by any of our officers, agents or employees. These interpretations are also subject to our general terms and conditions set out in our current Price Schedule.

Comments

NABORS COMPLETION & PRODUCTION CO.
THANK YOU FOR YOUR BUSINESS
DIRECTIONS: ELLIS W TO RD. #400, 2N TO RD. M, 1/2E, S INTO.

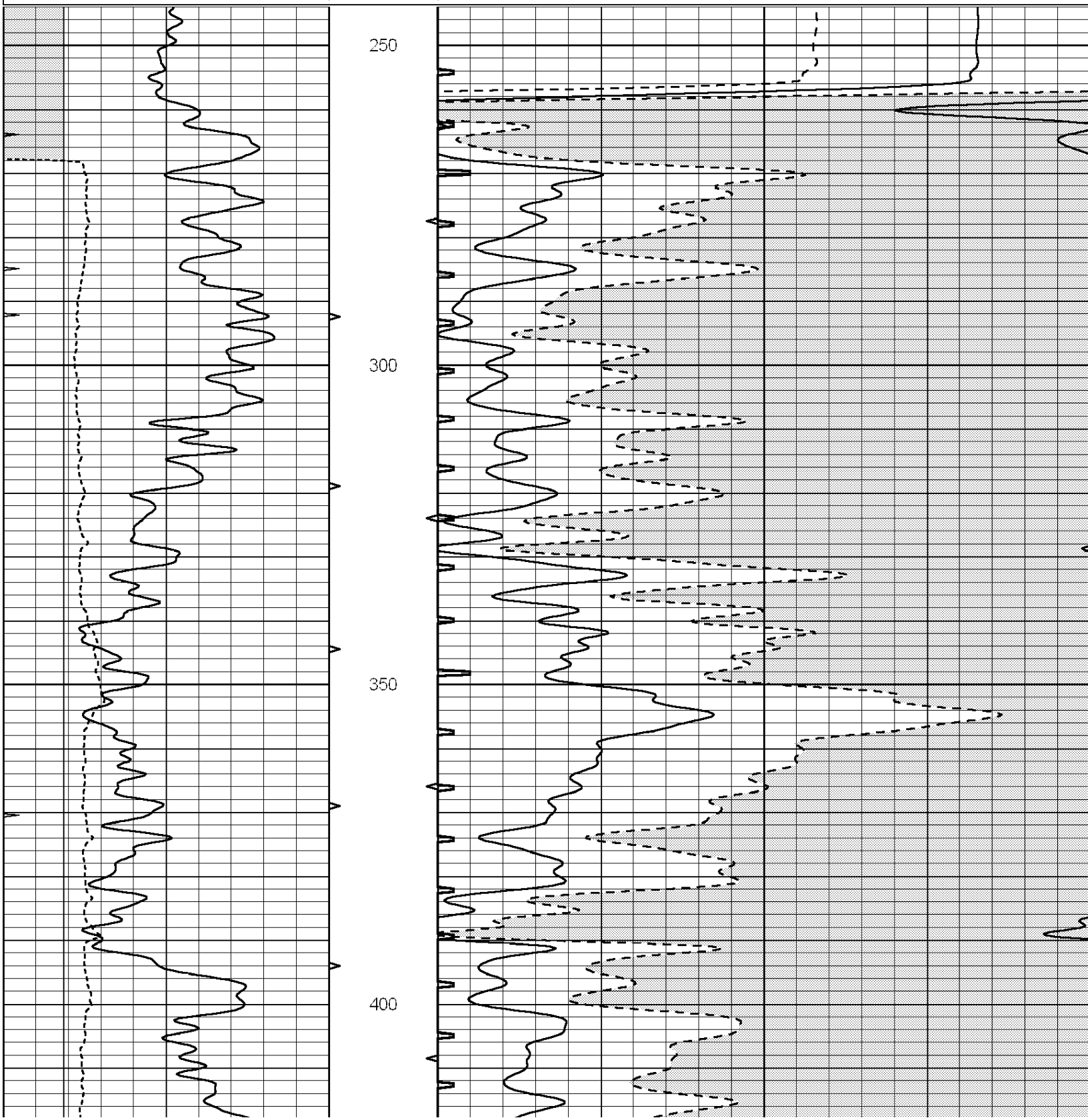


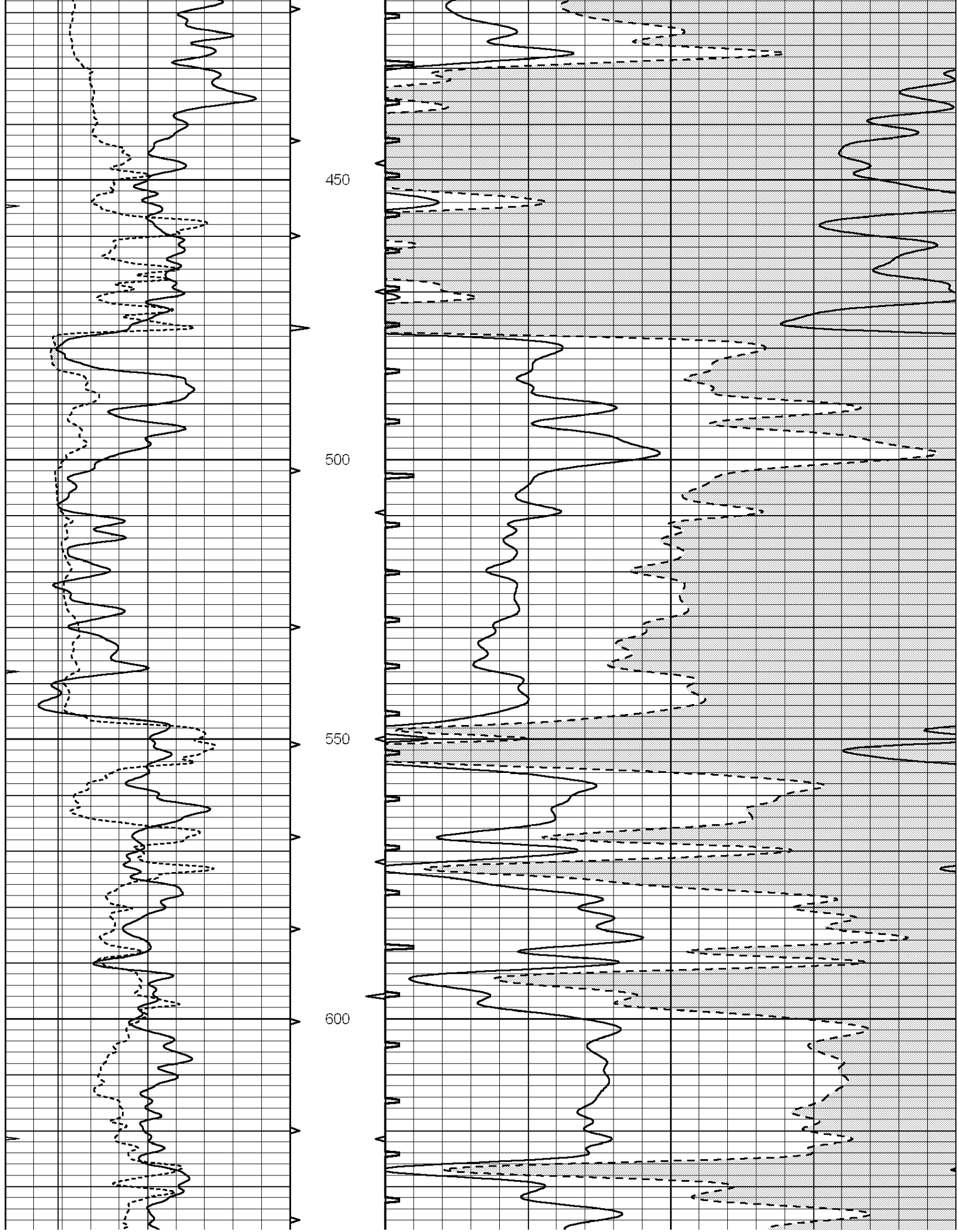
**COMPLETION
& PRODUCTION**

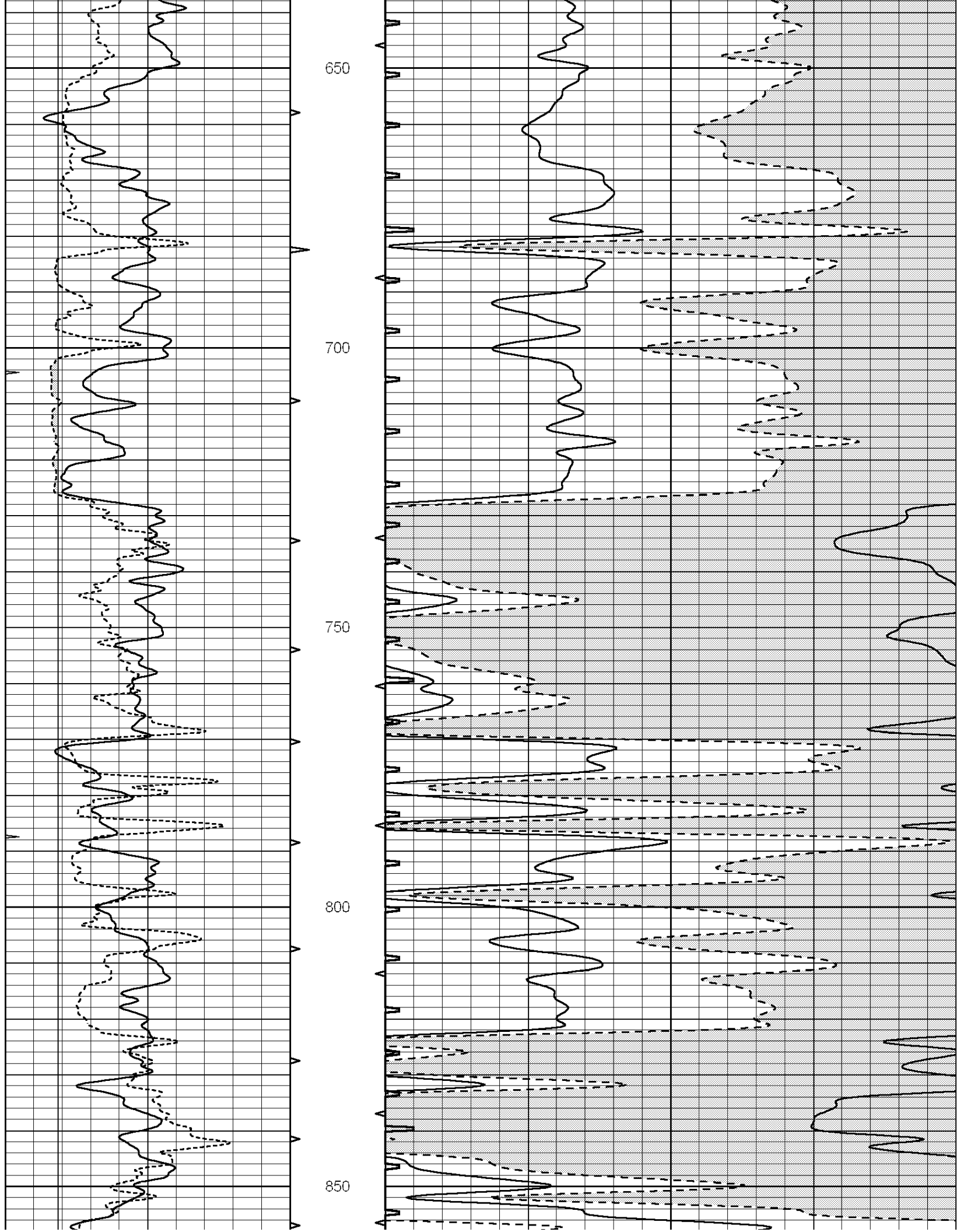
MAIN SECTION

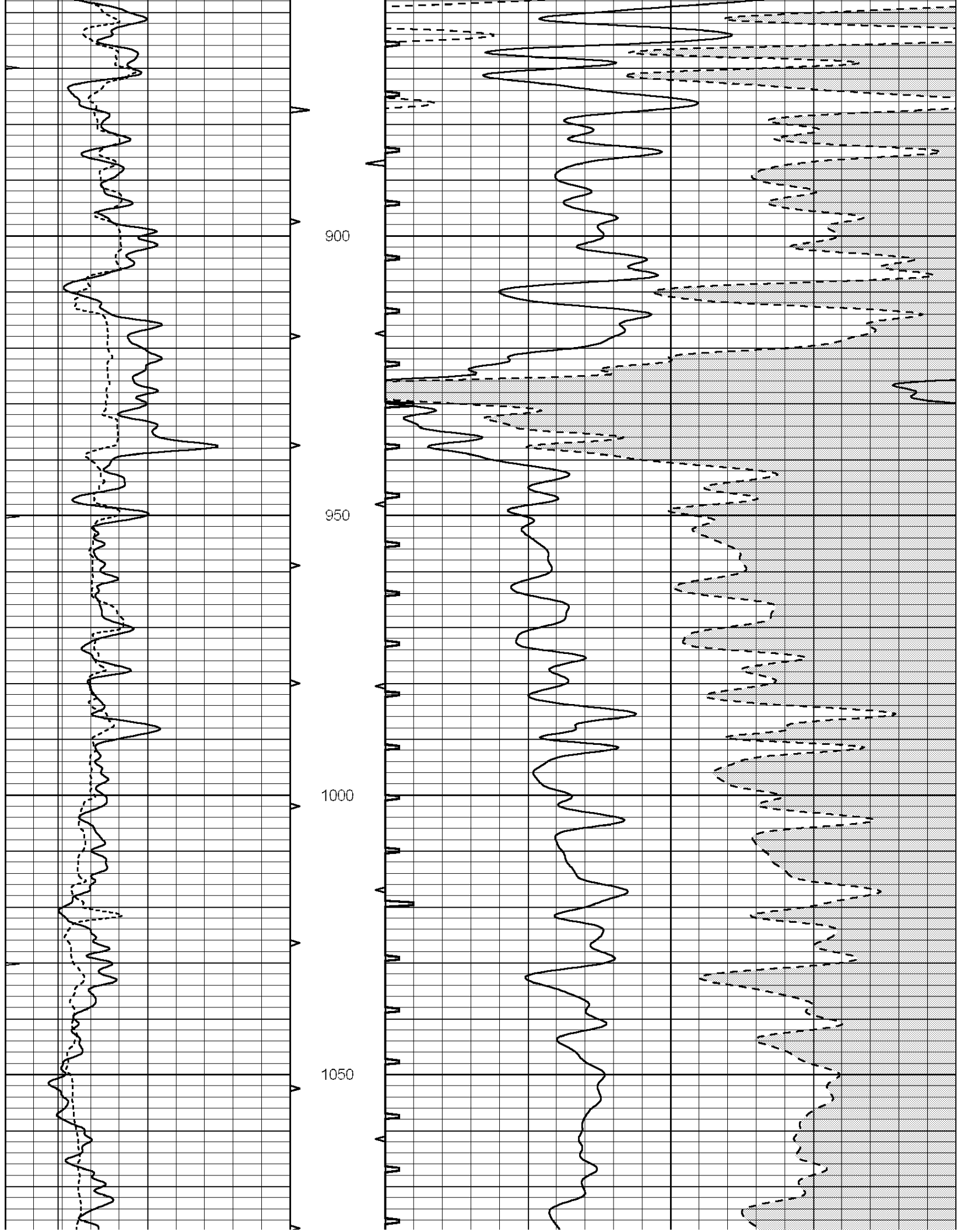
Database File: 009928pdm.db
 Dataset Pathname: pass6.1A
 Presentation Format: slt
 Dataset Creation: Sat Oct 06 05:25:46 2012
 Charted by: Depth in Feet scaled 1:240

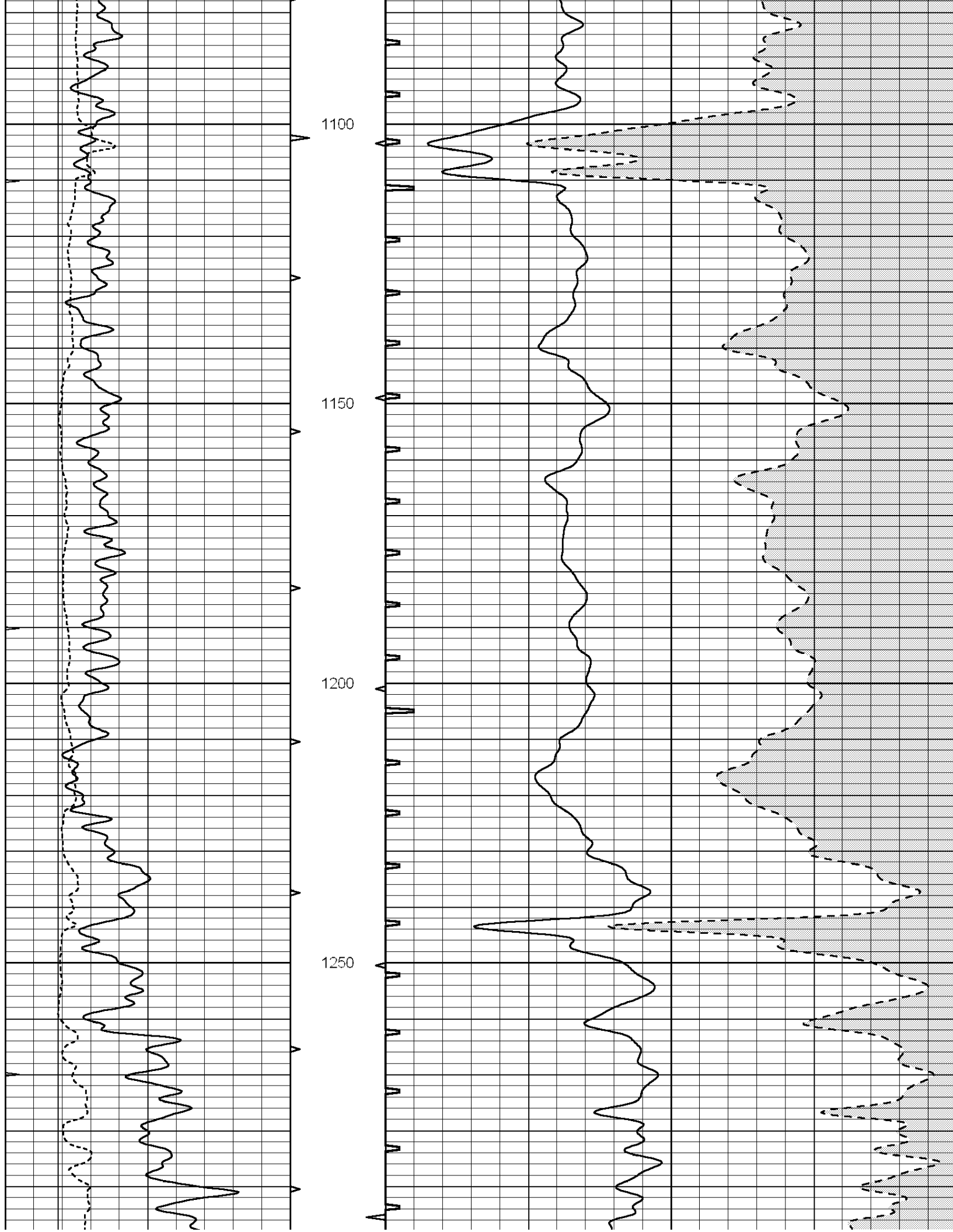
0	GAMMA RAY (GAPI)	150	ABHV	140	DELTA TIME (usec/ft)	40
6	MELCAL (in)	16	10 (ft3)	0 30	SONIC POROSITY (pu)	-10
0	MINMK	20	TBHV	0	ITT (msec)	20
			0 (ft3)	10		

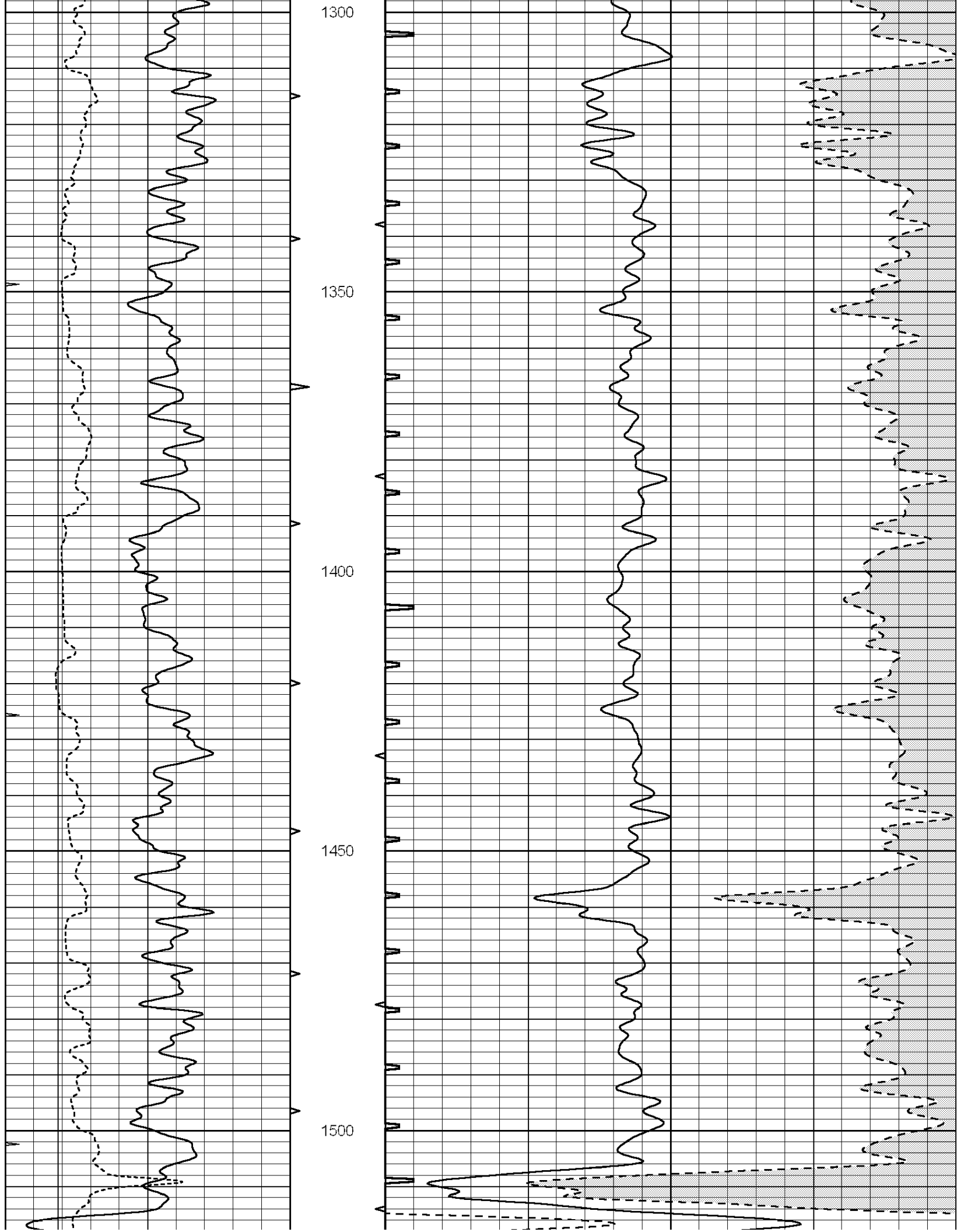


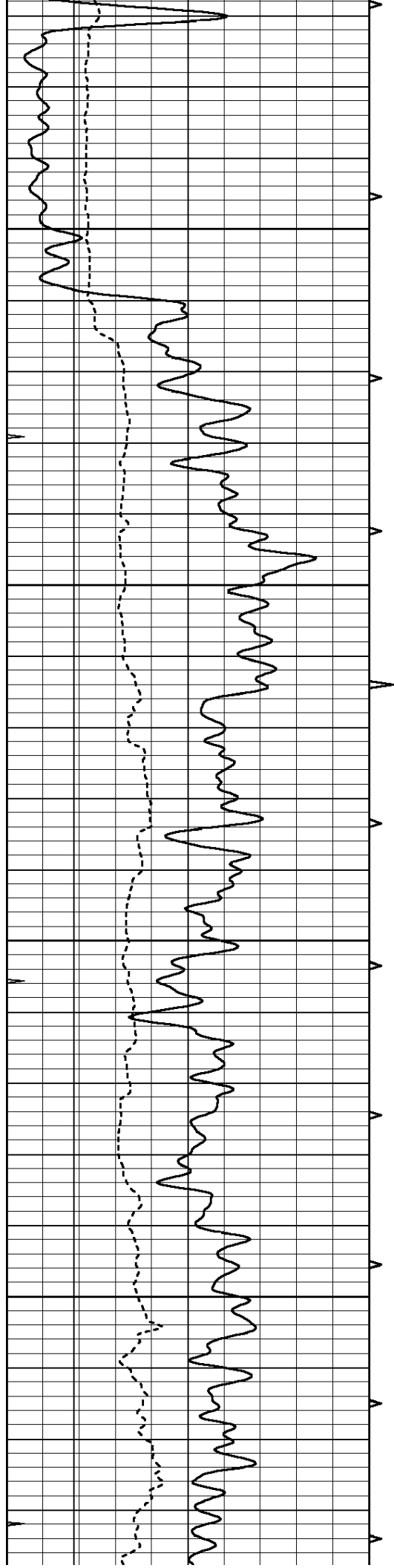










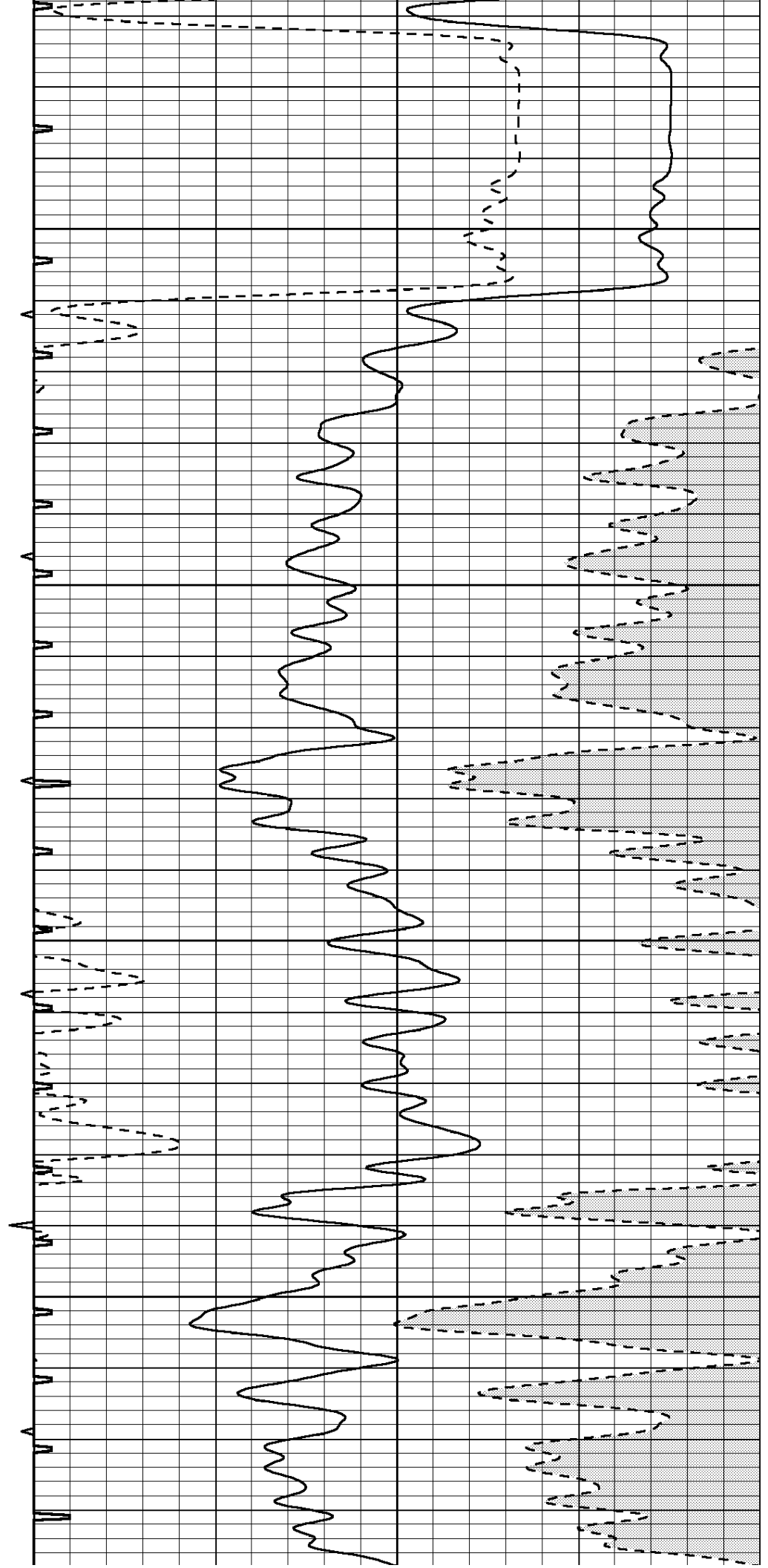


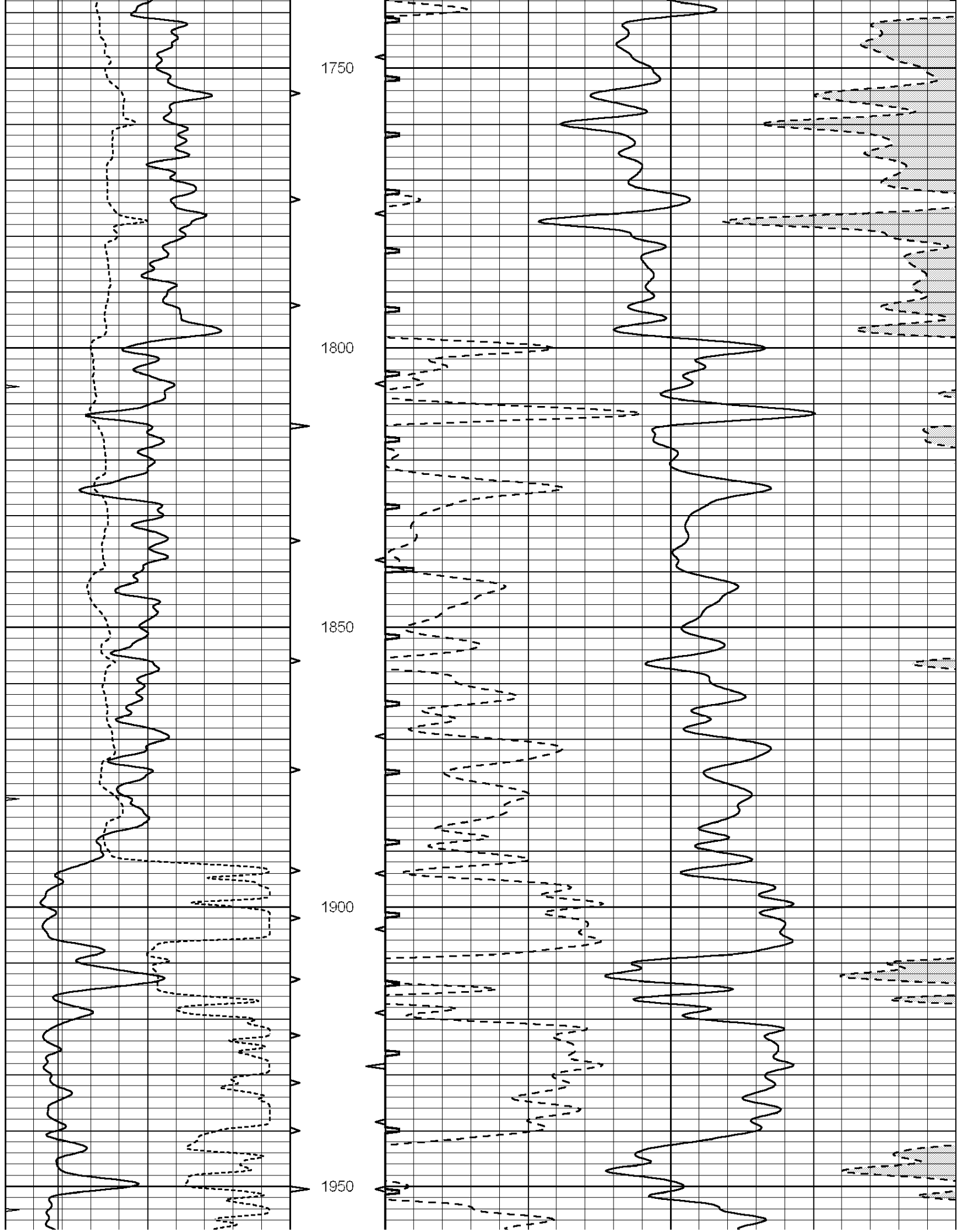
1550

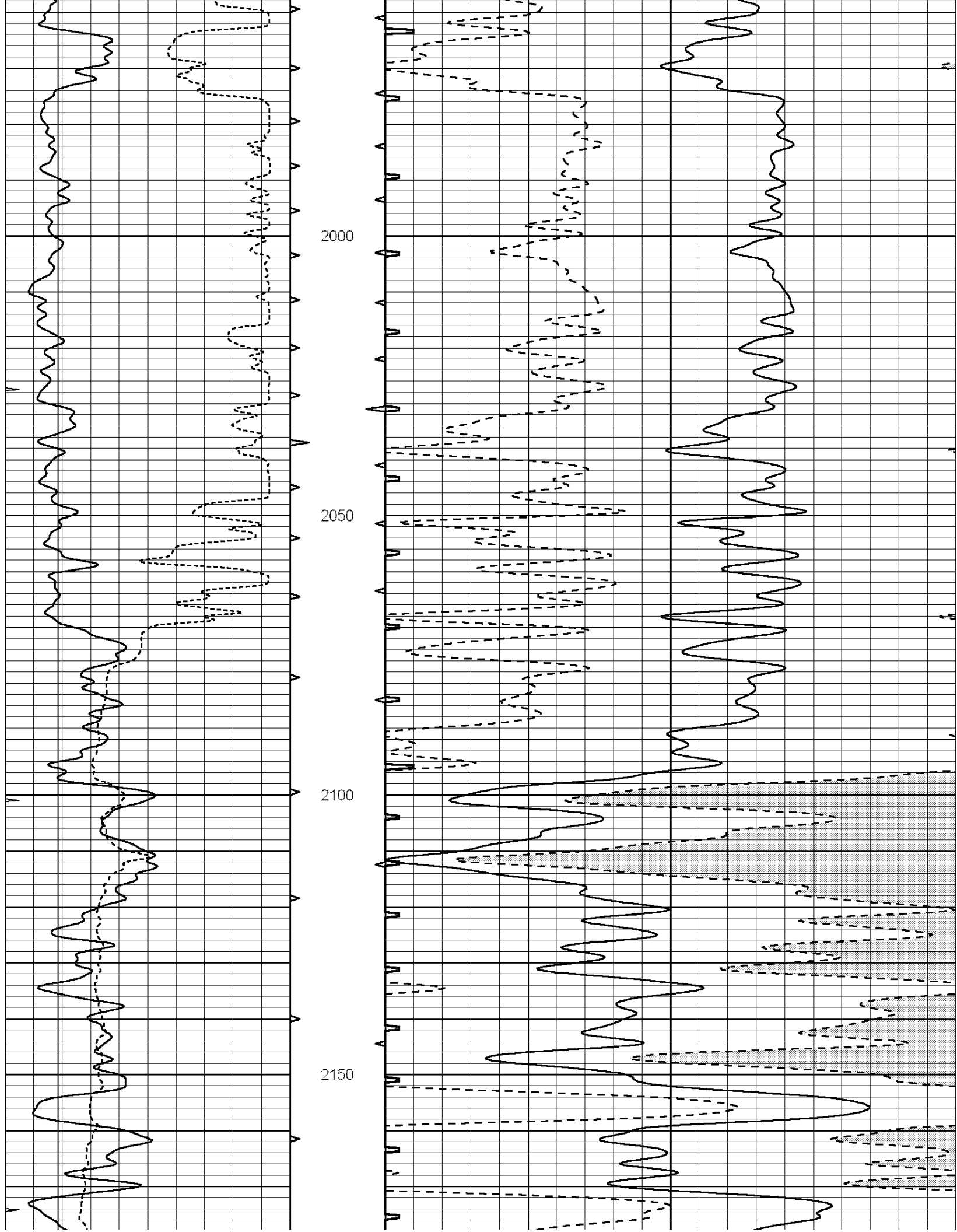
1600

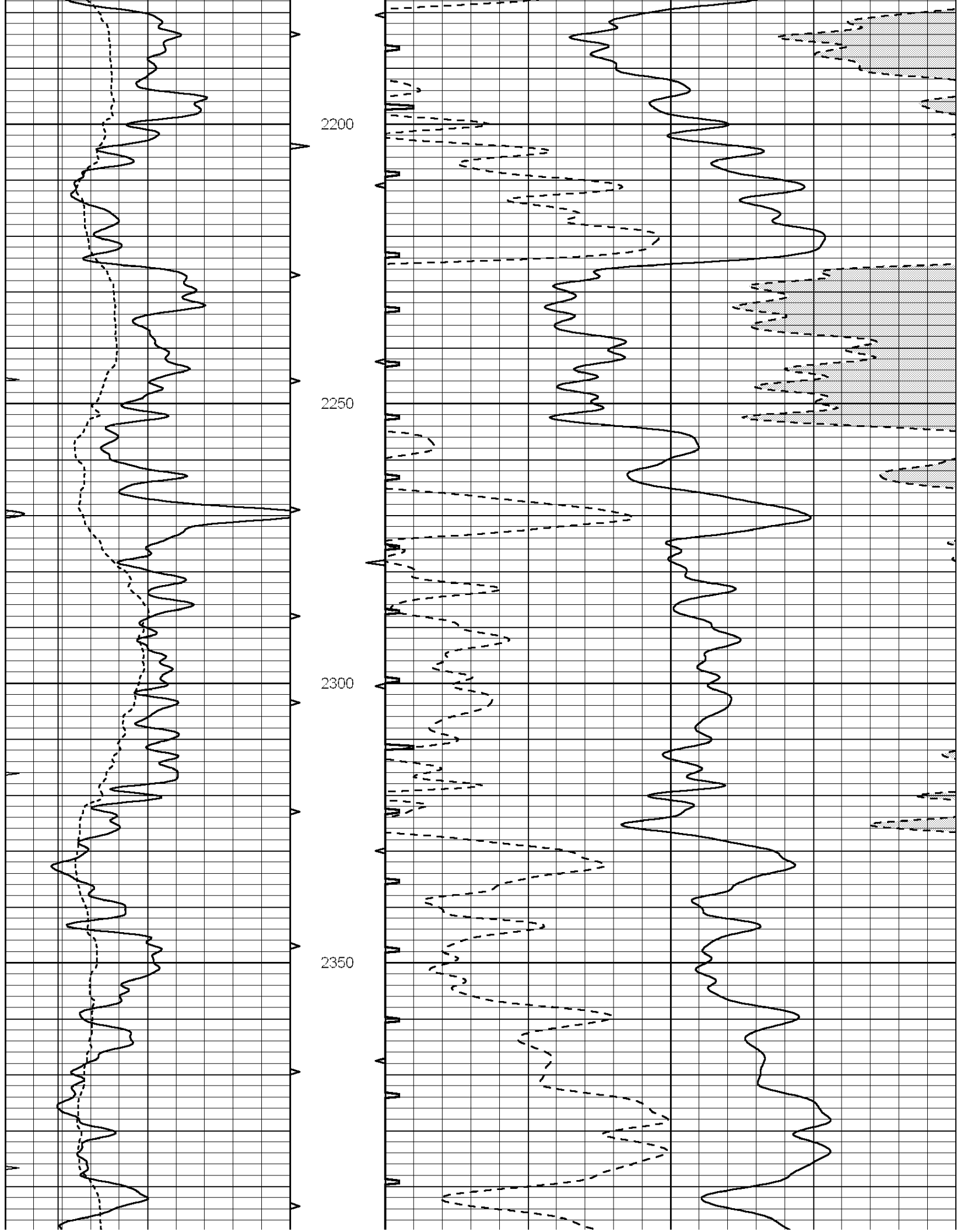
1650

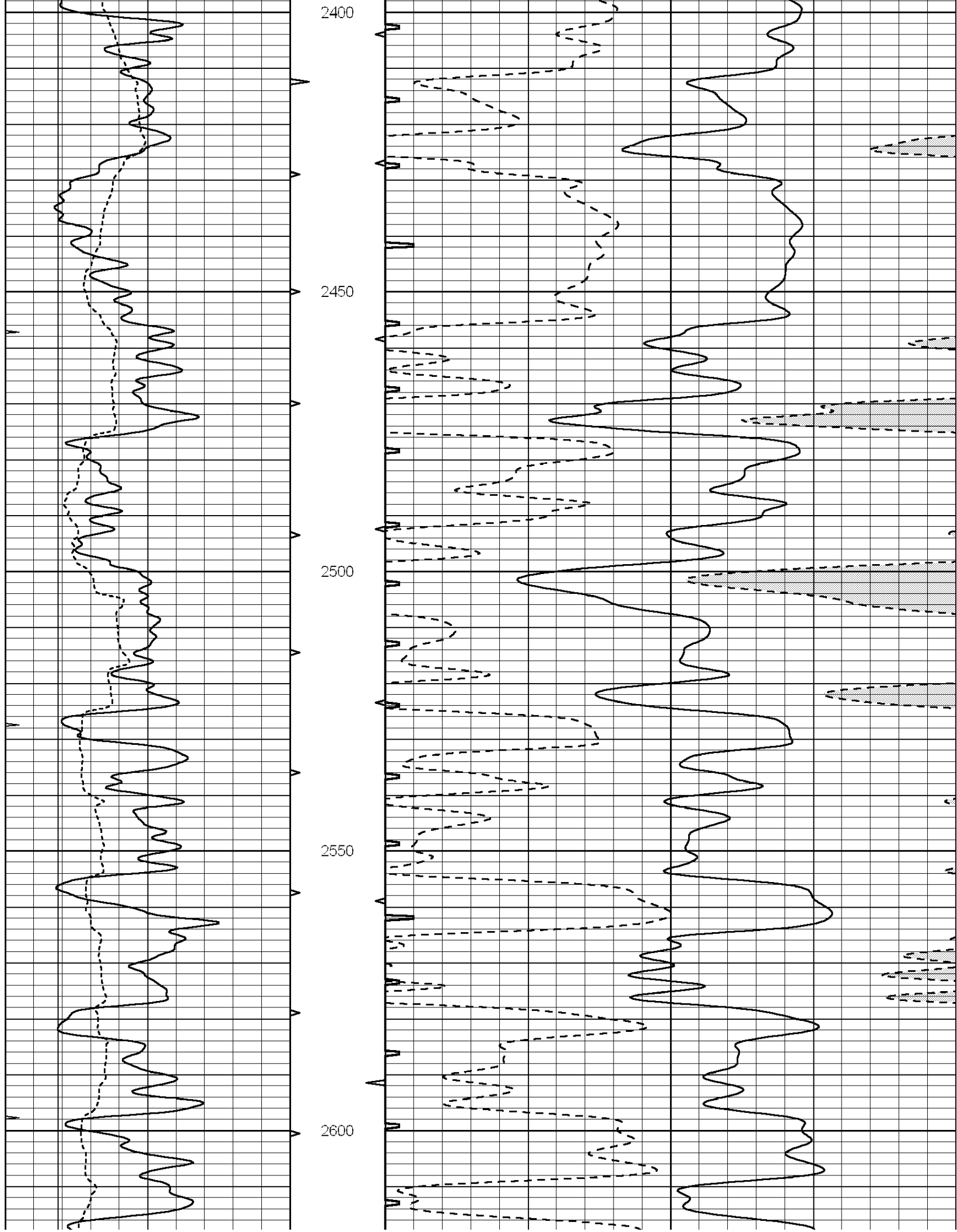
1700

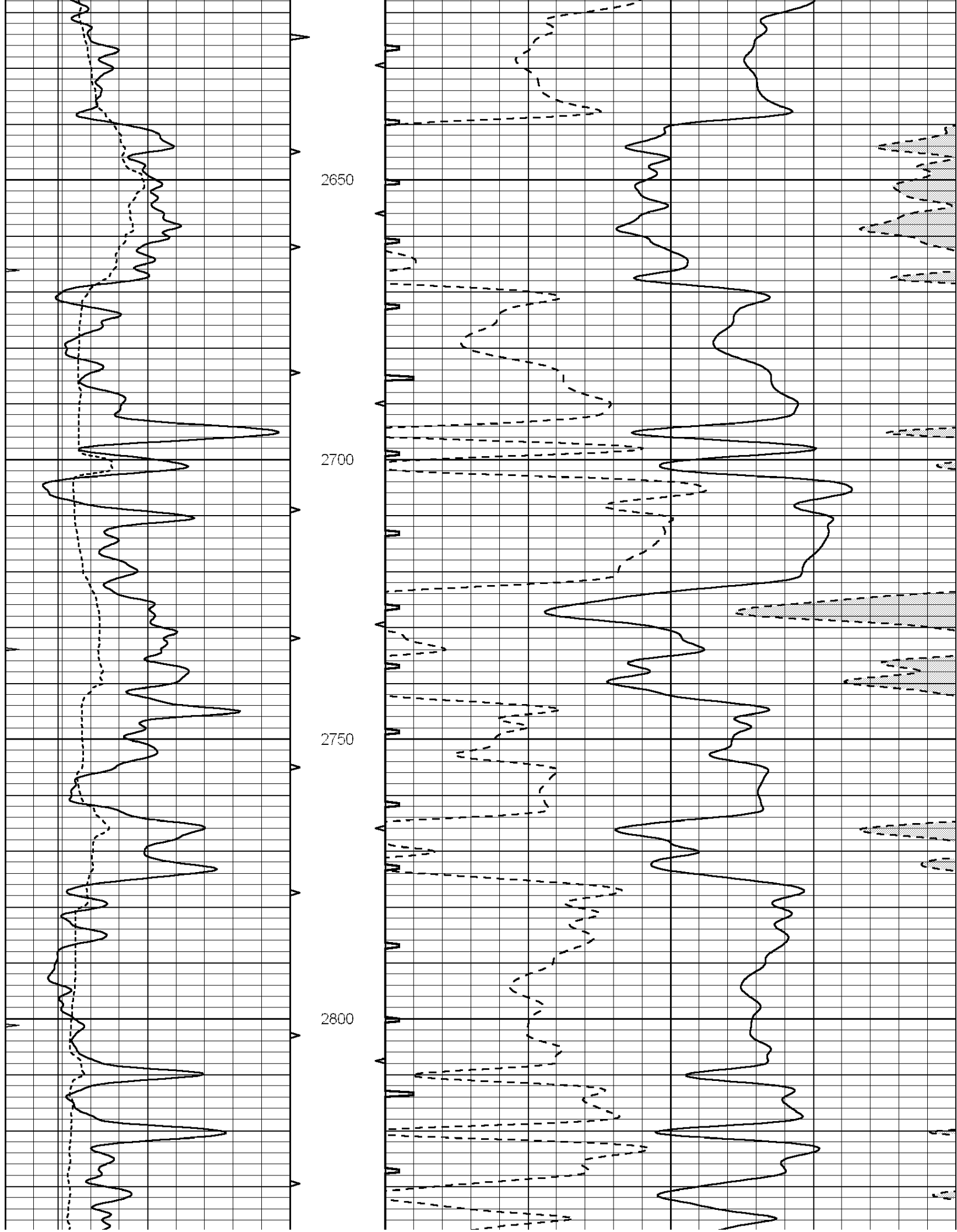


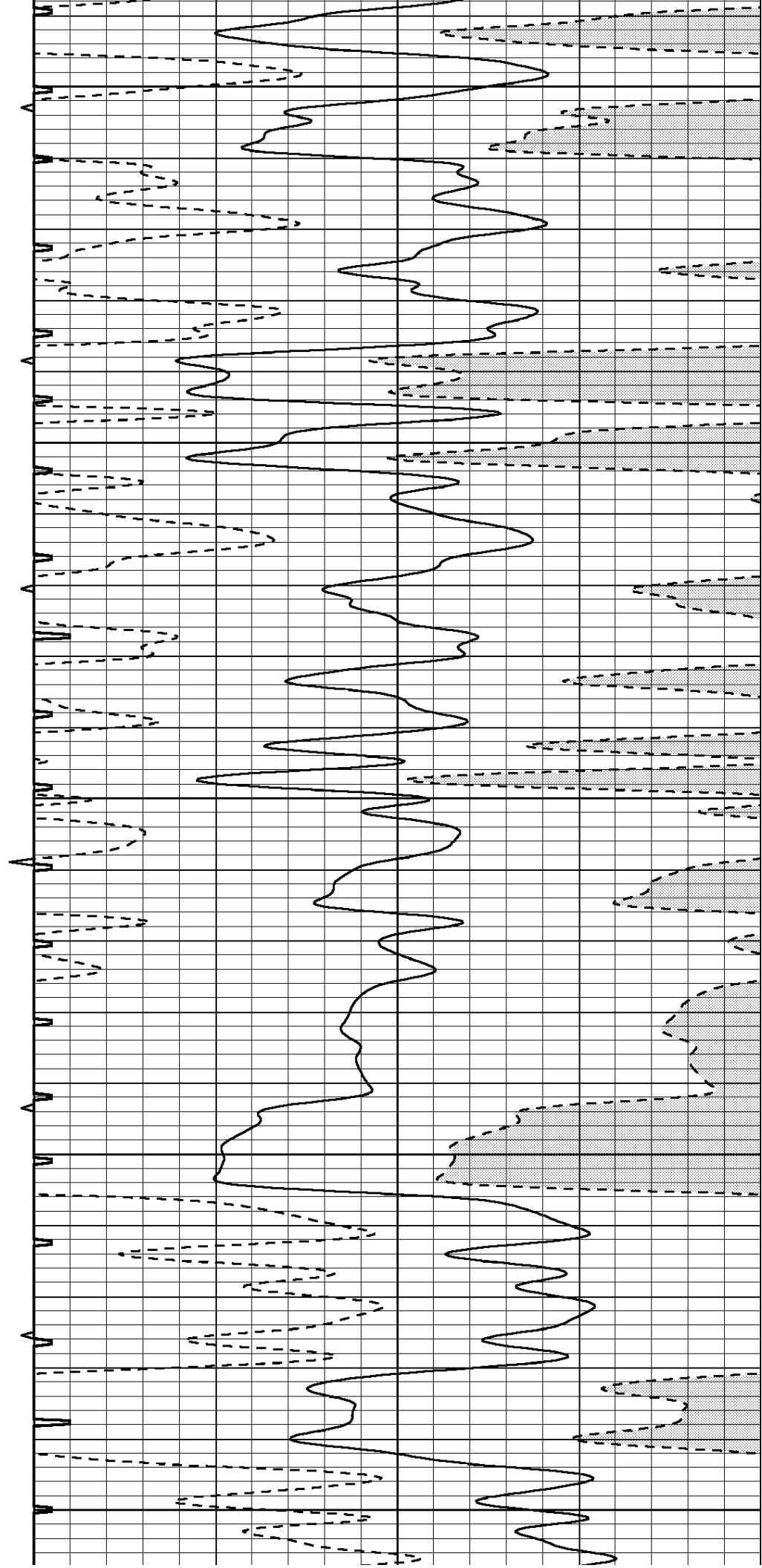
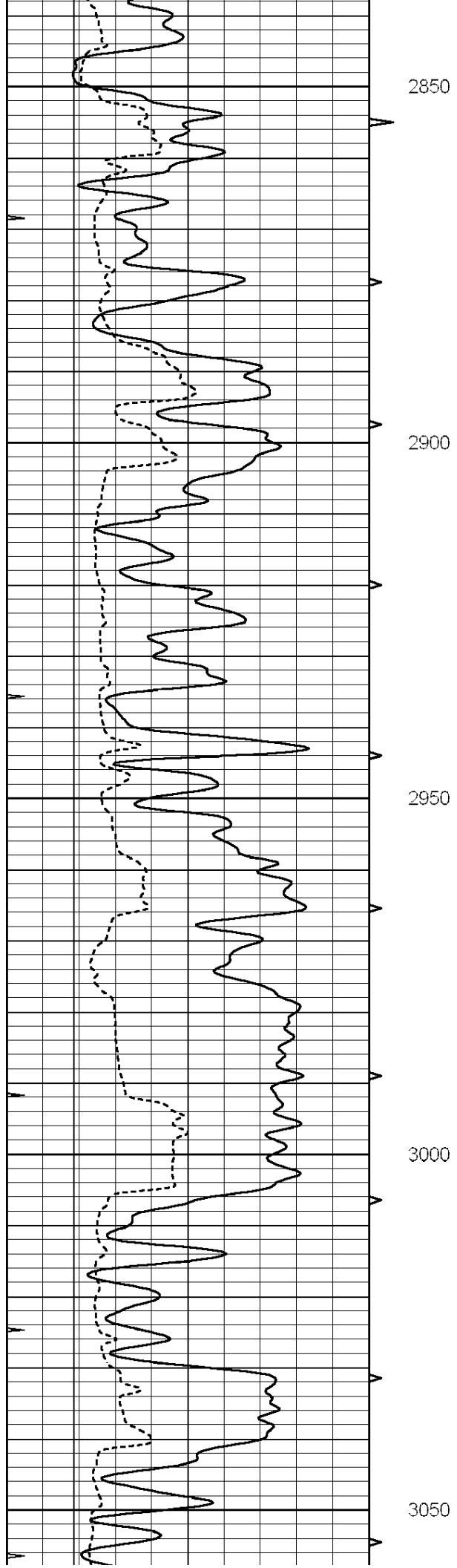


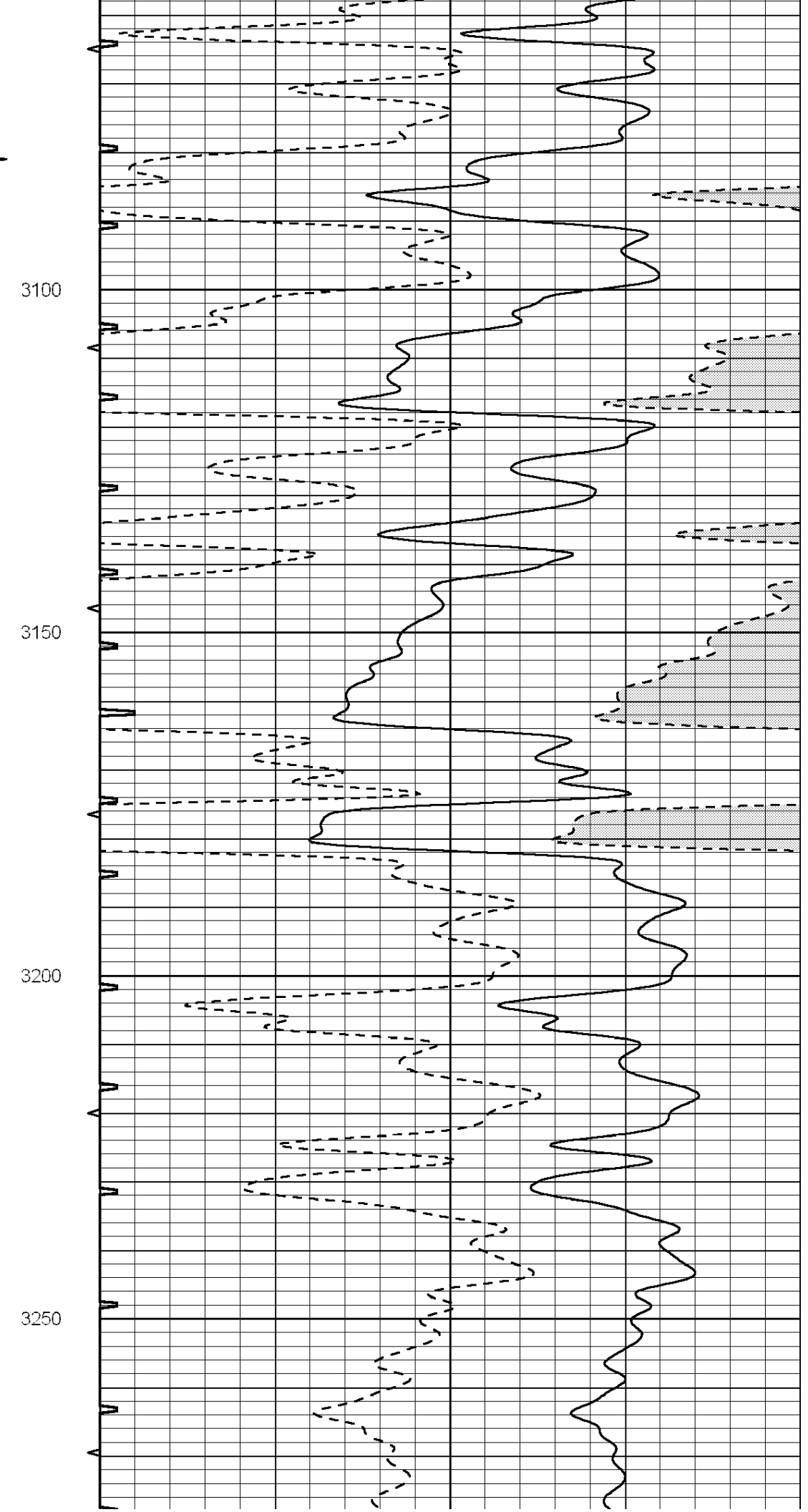
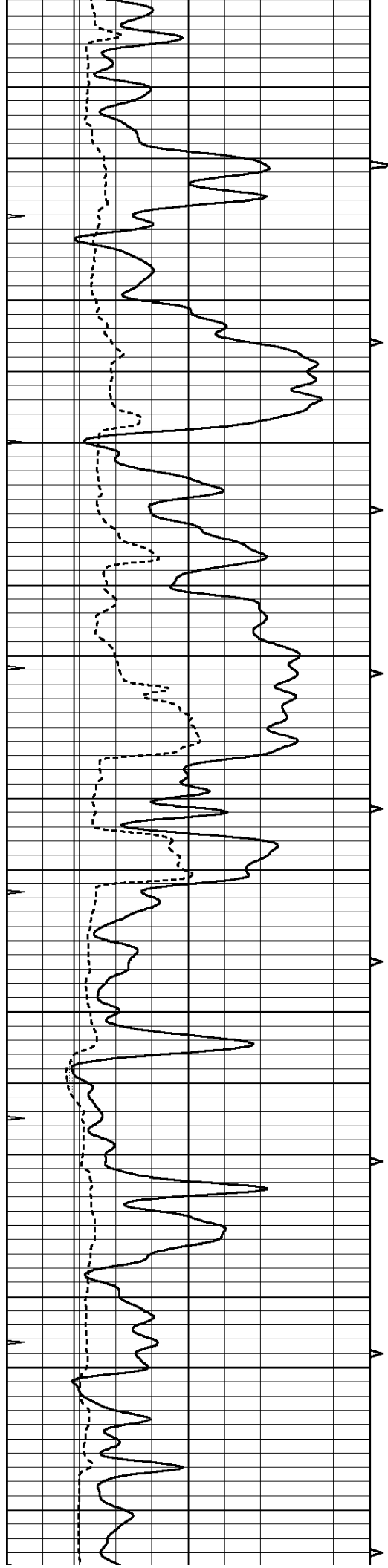


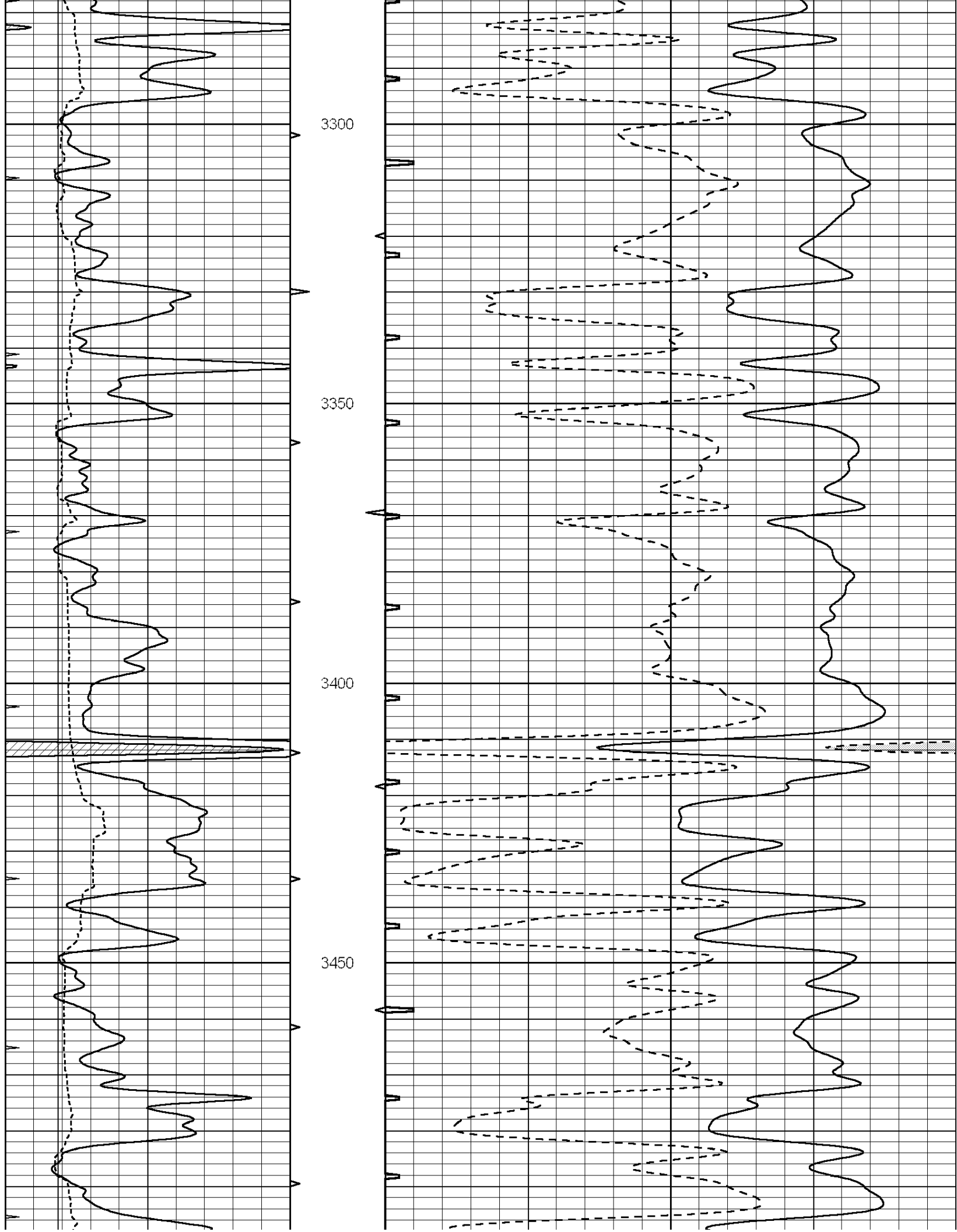


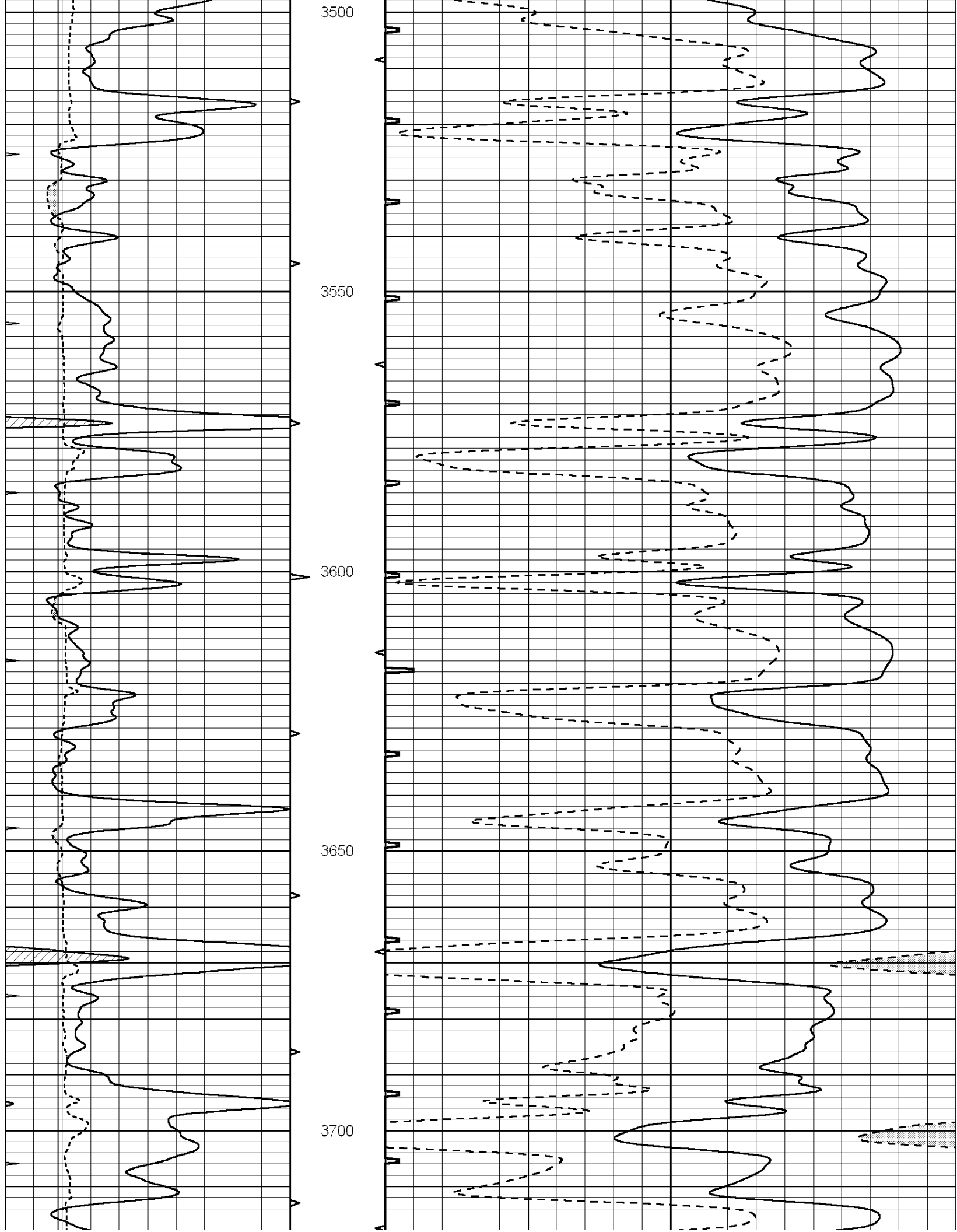


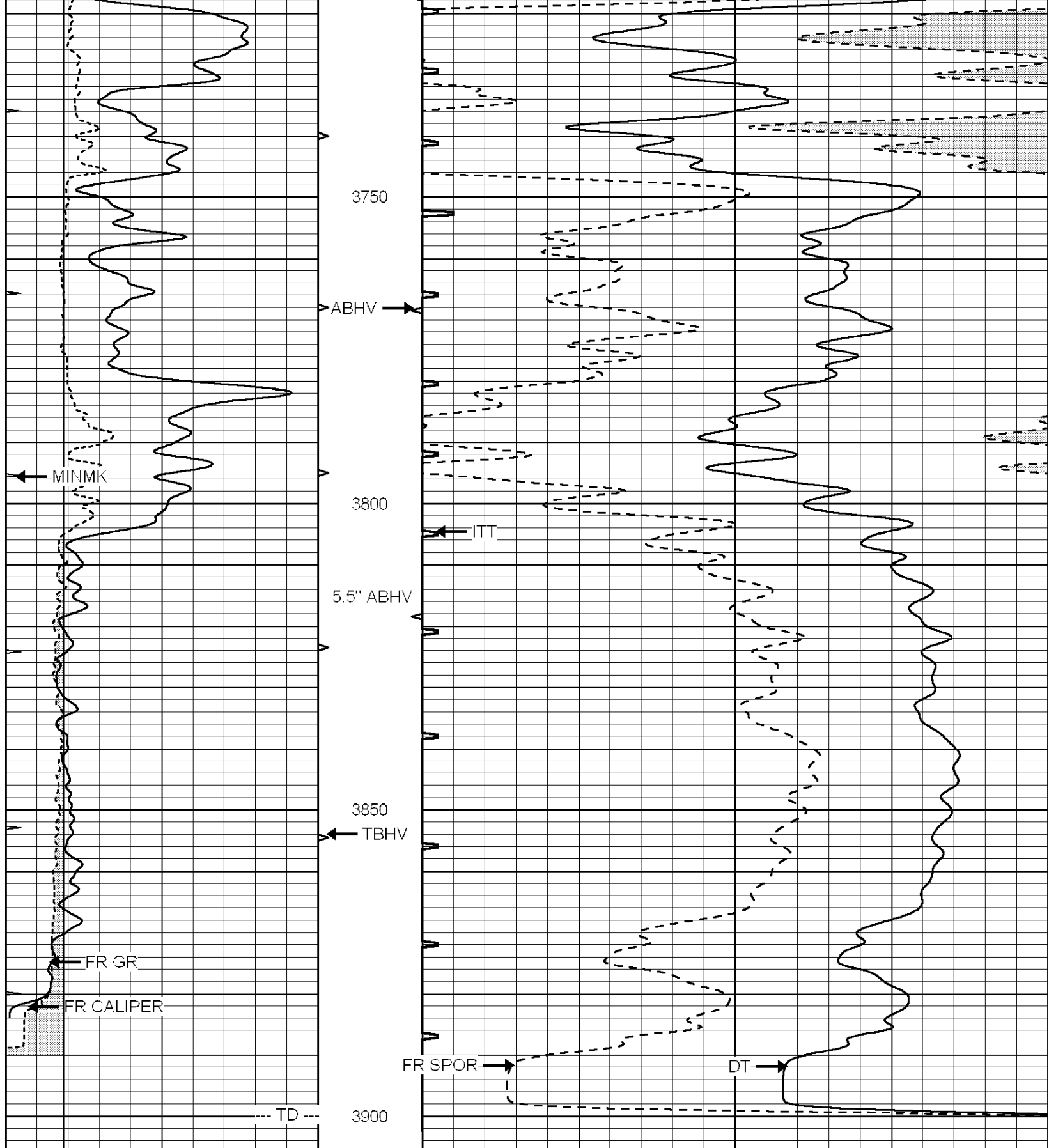




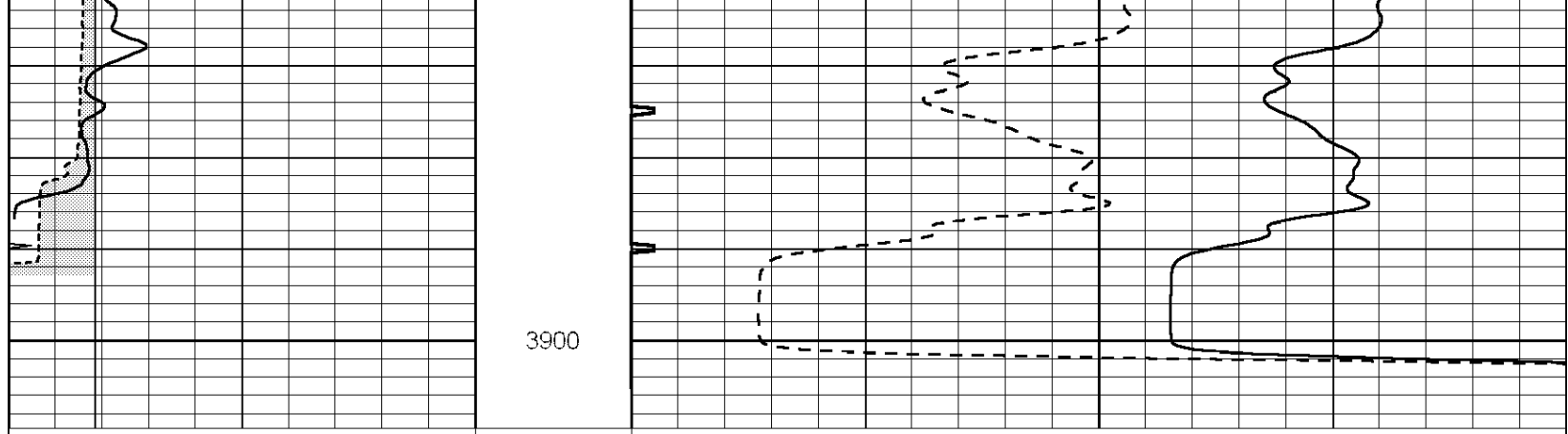








0	GAMMA RAY (GAPI)	150	ABHV	140	DELTA TIME (usec/ft)	40
6	MELCAL (in)	16	10 (ft3)	0 30	SONIC POROSITY (pu)	-10
0	MINMK	20	TBHV	0	ITT (msec)	20
			0 (ft3)	10		



0	GAMMA RAY (GAPI)	150	ABHV	140	DELTA TIME (usec/ft)	40
6	MELCAL (in)	16	10 (ft3) 0	30	SONIC POROSITY (pu)	-10
0	MINMK	20	TBHV	0	ITT (msec)	20
			0 (ft3) 10			