



**SUPERIOR**  
**Hays,**  
**Kansas**

**DUAL**  
**INDUCTION**  
**LOG**

Company **REILLY OIL COMPANY, INC.**  
 Well **LINDA # 1-7**  
 Field **WILDCAT**  
 County **TREGO** State **KANSAS**

Company **REILLY OIL COMPANY, INC.**  
 Well **LINDA # 1-7**  
 Field **WILDCAT**  
 County **TREGO**  
 State **KANSAS**

Location: **API # : 15-195-22808-00-00**  
**933' FSL & 1205' FEL**  
**SEC 16 TWP 11S RGE 24W**  
 Permanent Datum **GROUND LEVEL** Elevation **2370**  
 Log Measured From **KELLY BUSHING 5' A.G.L.**  
 Drilling Measured From **KELLY BUSHING**

Other Services  
**CDL/CNL**  
**MEL**  
 Elevation  
**K.B. 2375**  
**D.F. 2373**  
**G.L. 2370**

Date	9/3/12		
Run Number	ONE		
Depth Driller	4220		
Depth Logger	4219		
Bottom Logged Interval	4195		
Top Log Interval	0		
Casing Driller	218		
Casing Logger	216		
Bit Size	7.875		
Type Fluid in Hole	CHEMICAL MUD		
Density / Viscosity	9.3 / 63	CHLORIDES 1,900 PPM	
pH / Fluid Loss	10.5 / 7.8		
Source of Sample	FLOWLINE		
Rim @ Meas. Temp	0.90 @ 96F		
Rmf @ Meas. Temp	0.68 @ 86F		
Rmc @ Meas. Temp	1.08 @ 86F		
Source of Rmf / Rmc	MEASURED		
Rim @ BHT	0.90 @ 118F		
Time Circulation Stopped	2 HOURS		
Time Logger on Bottom			
Maximum Recorded Temperature	118F		
Equipment Number	860		
Location	HAYS, KS.		
Recorded By	IAN MABB	JEFF GRONIEWEG	
Witnessed By	DUSTY RHOADES		

<<< Fold Here >>>

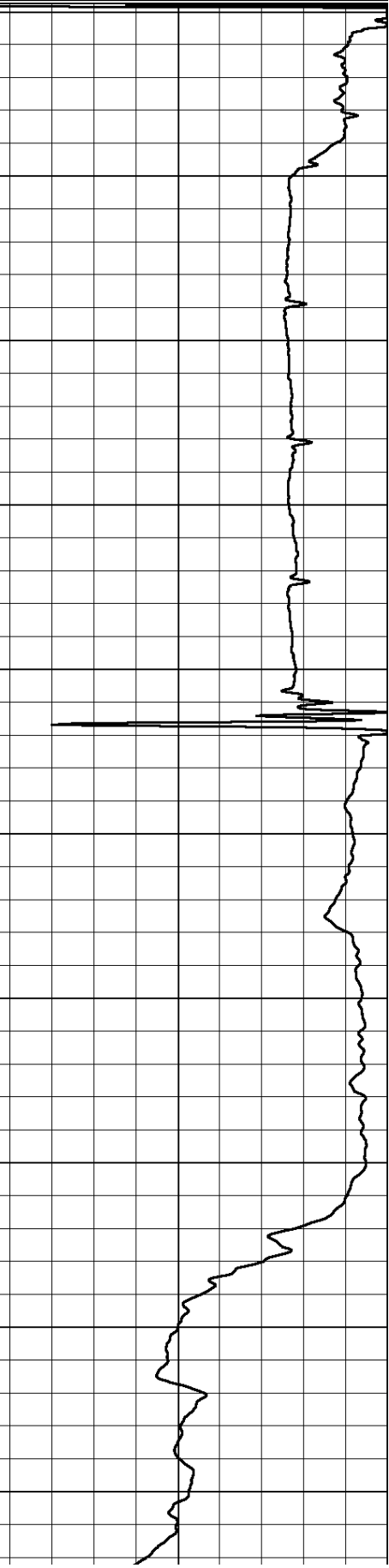
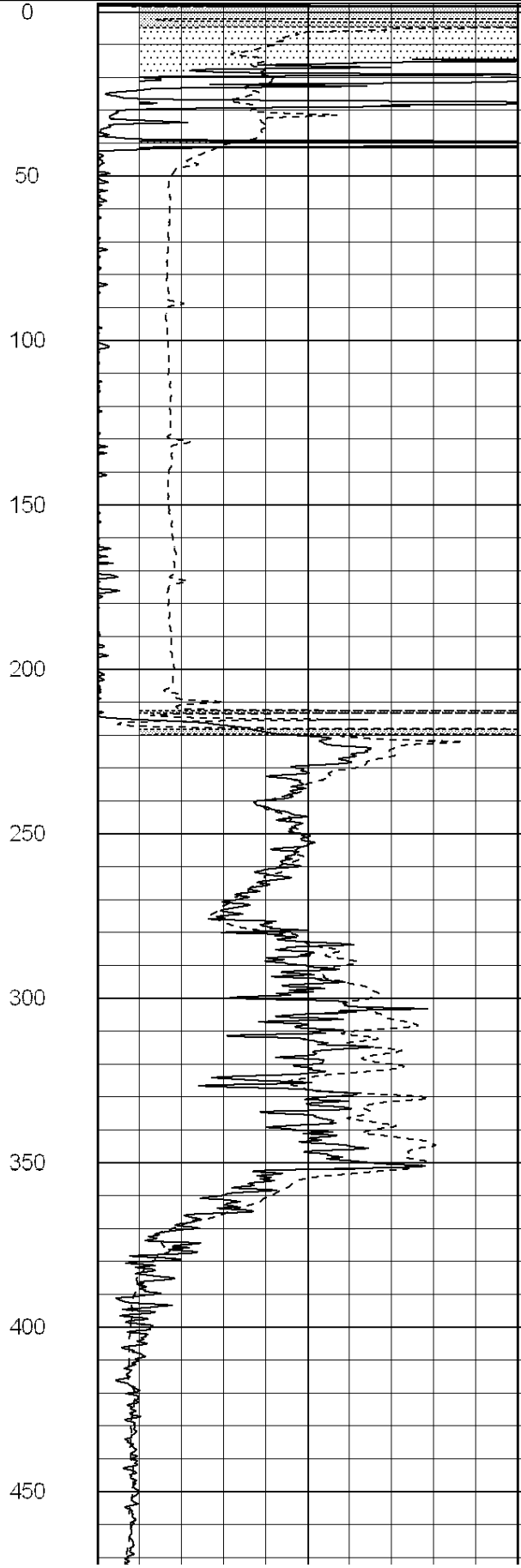
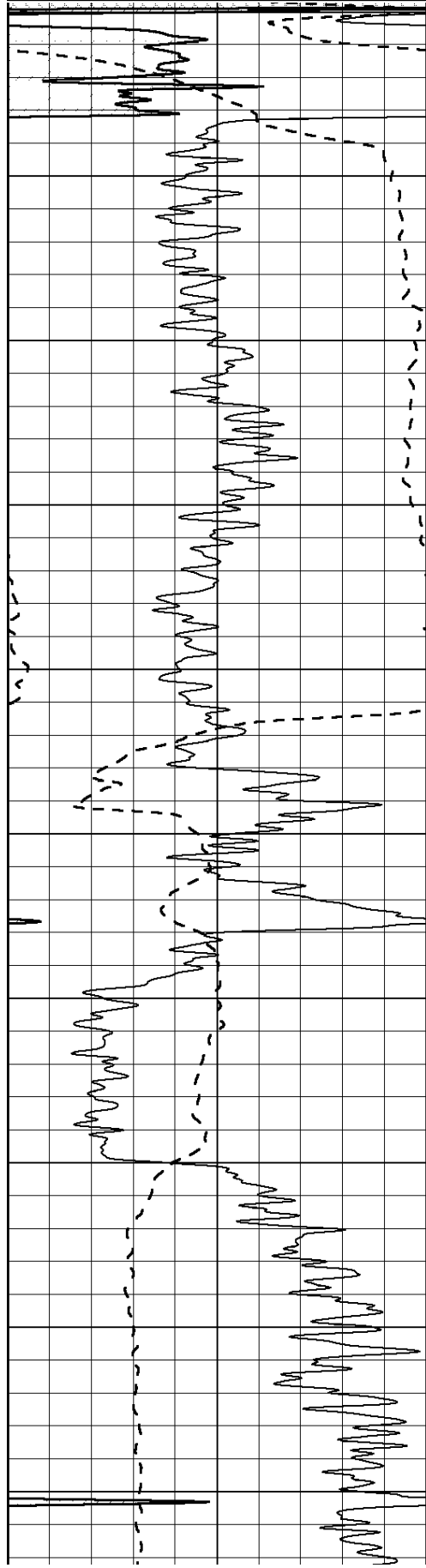
All interpretations are opinions based on inferences from electrical or other measurements and we cannot and do not guarantee the accuracy or correctness of any interpretation, and we shall not, except in the case of gross or willful negligence on our part, be liable or responsible for any loss, costs, damages, or expenses incurred or sustained by anyone resulting from any interpretation made by any of our officers, agents or employees. These interpretations are also subject to our general terms and conditions set out in our current Price Schedule.

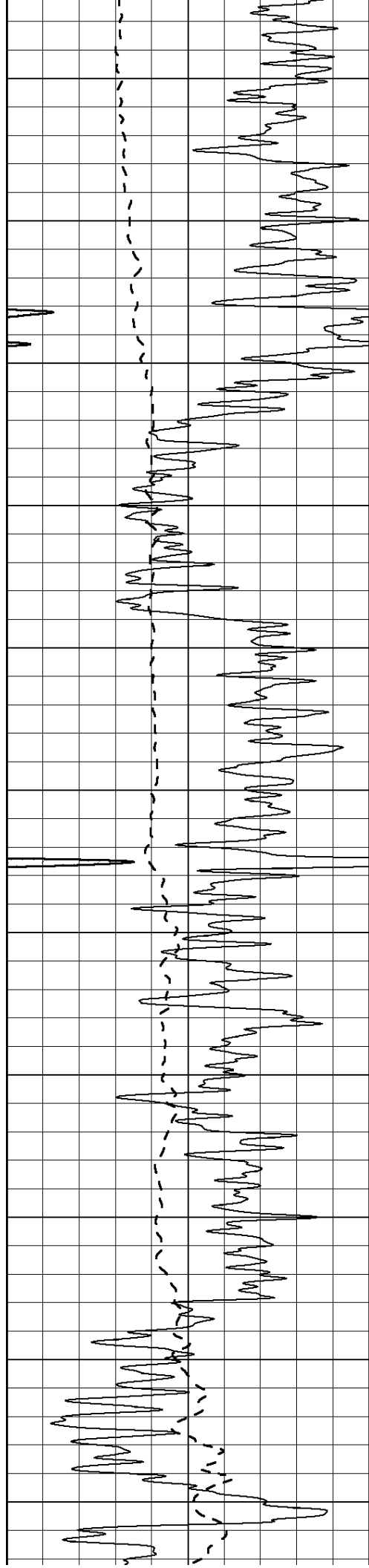
Comments

THANK YOU FOR USING SUPERIOR WELL SERVICES  
 785-628-6395  
 I-70 & VODA, 2.5 N, 1W, 3 N TO RD C, 3/4 E, N INTO

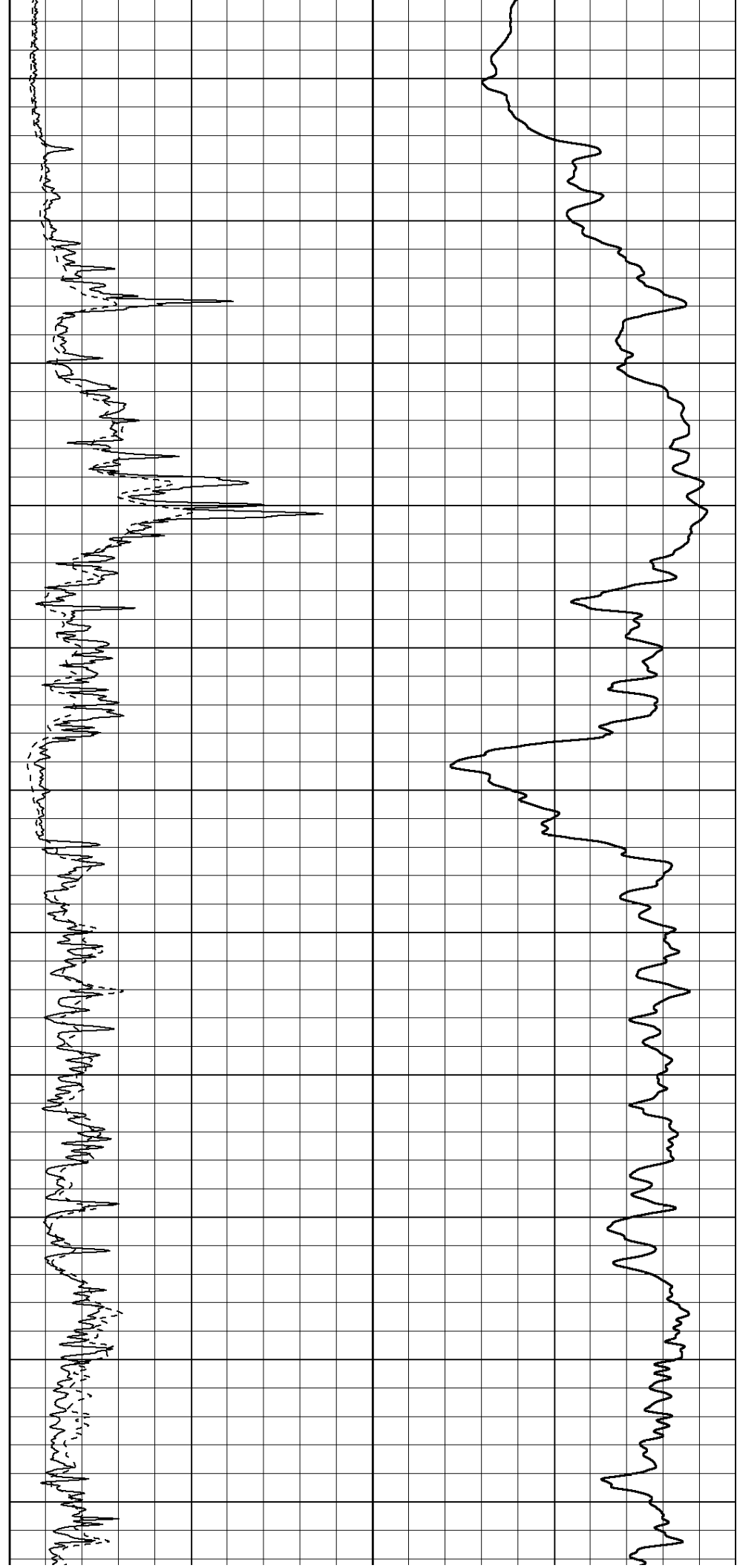
0	Gamma Ray (GAPI)	150
---	------------------	-----

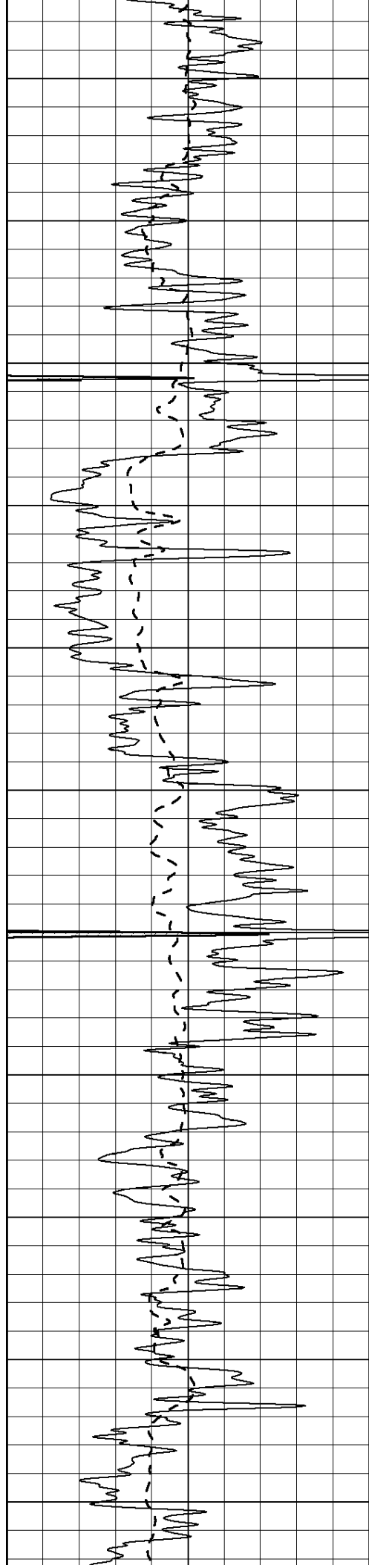
0	RLL3 (Ohm-m)	50
0	Deep Induction (Ohm-m)	50
1000	CILD (mmho/m)	0
50	RILD X10 (Ohm-m)	500
50	RLL3 X10 (Ohm-m)	500



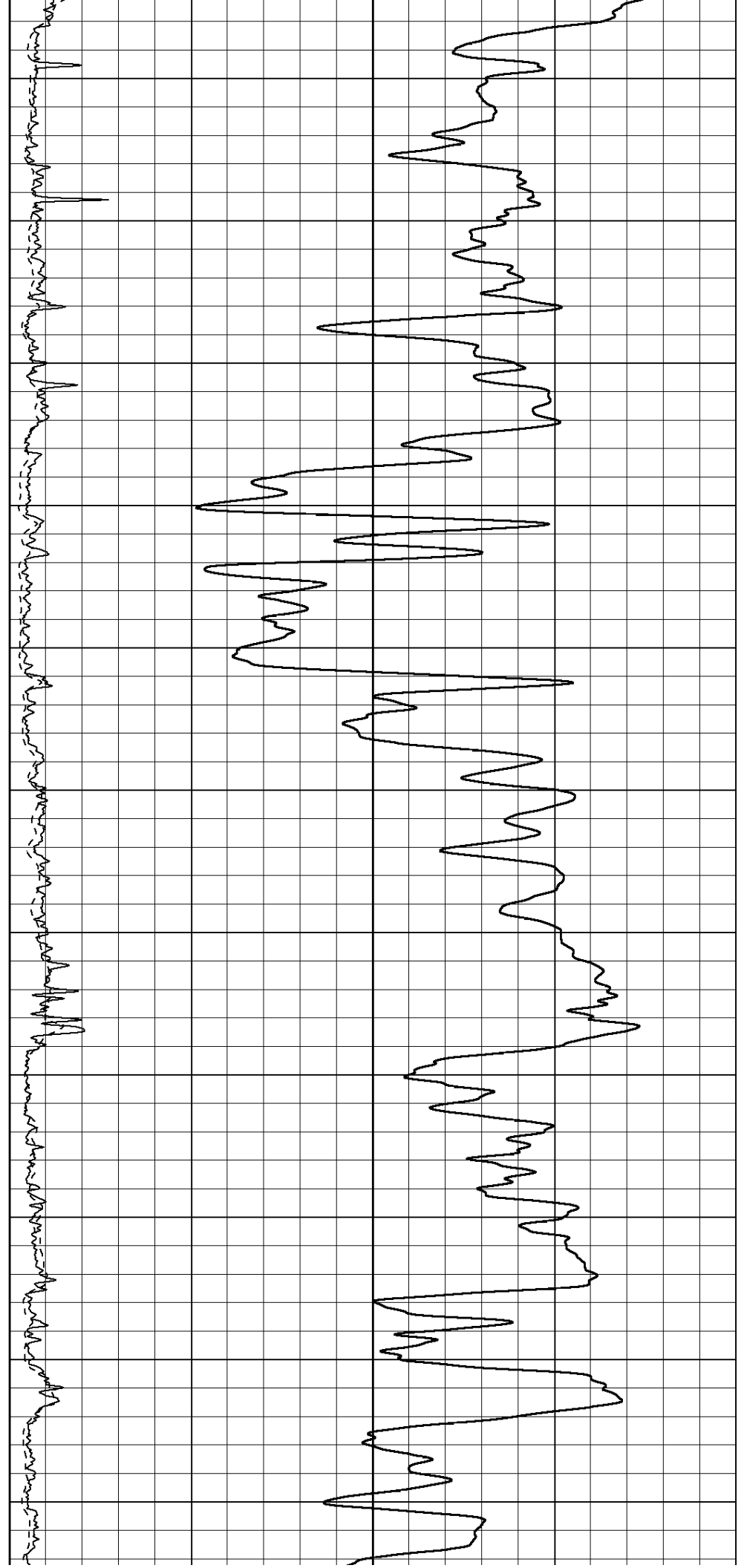


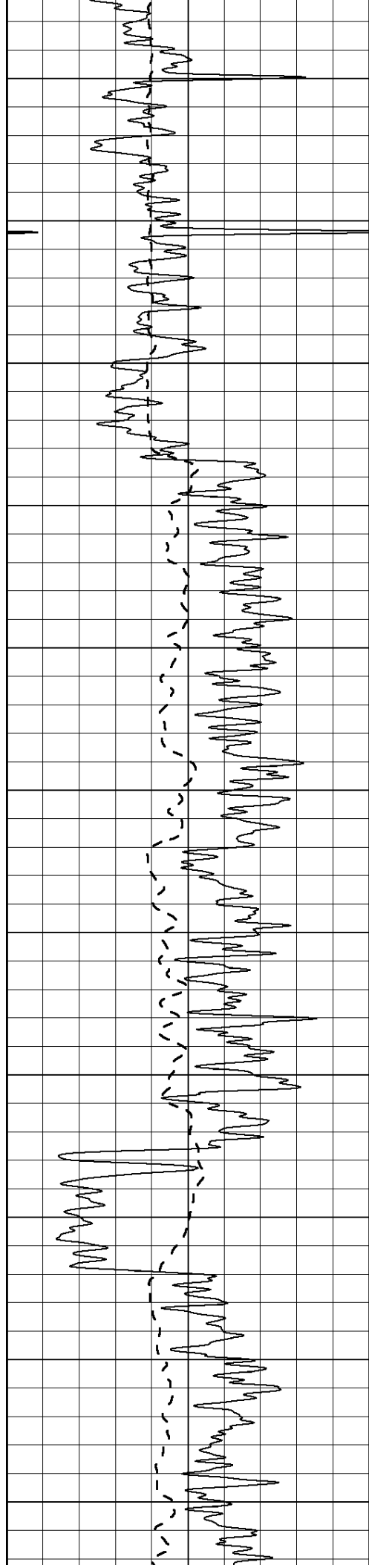
500  
550  
600  
650  
700  
750  
800  
850  
900  
950  
1000





1050  
1100  
1150  
1200  
1250  
1300  
1350  
1400  
1450  
1500  
1550





1600

1650

1700

1750

1800

1850

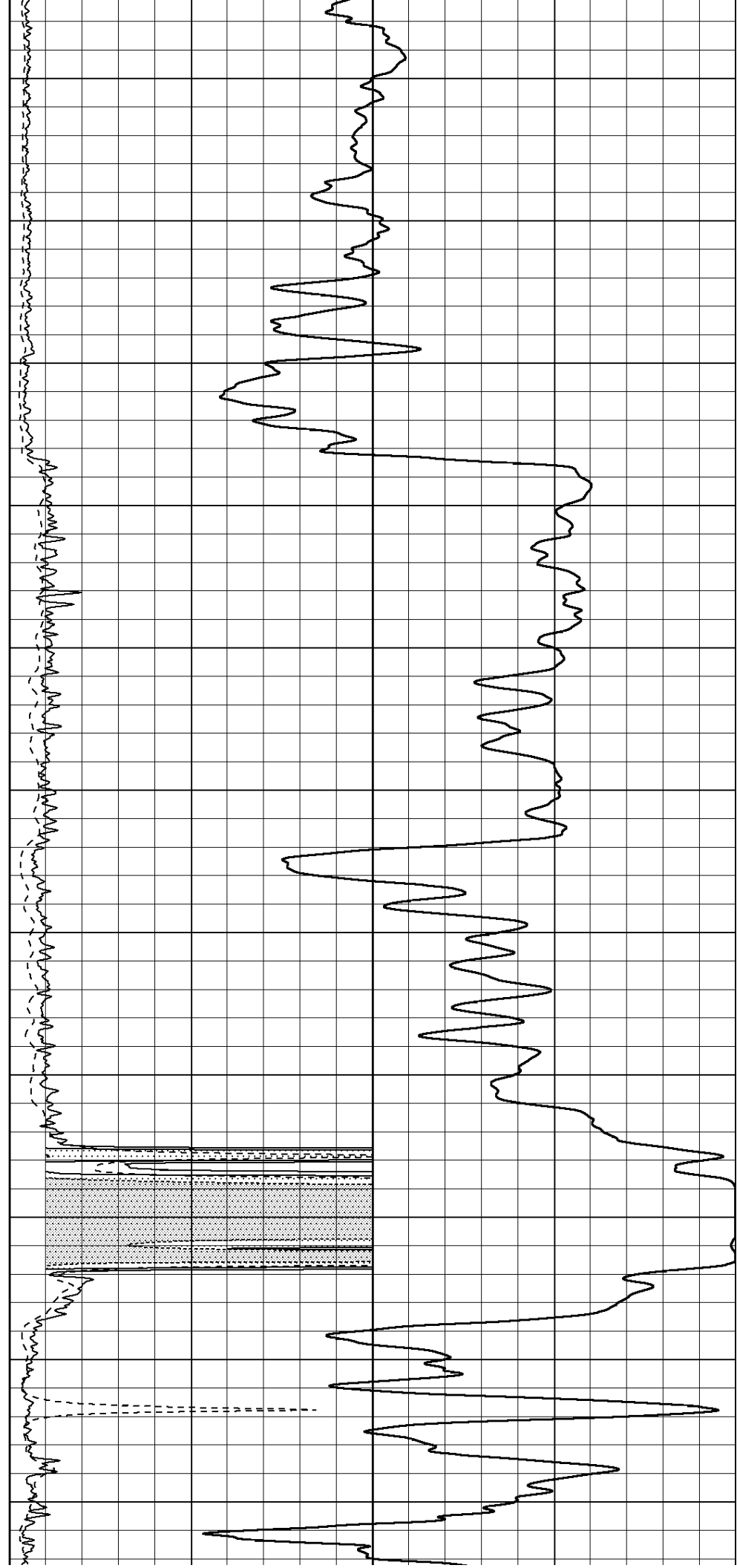
1900

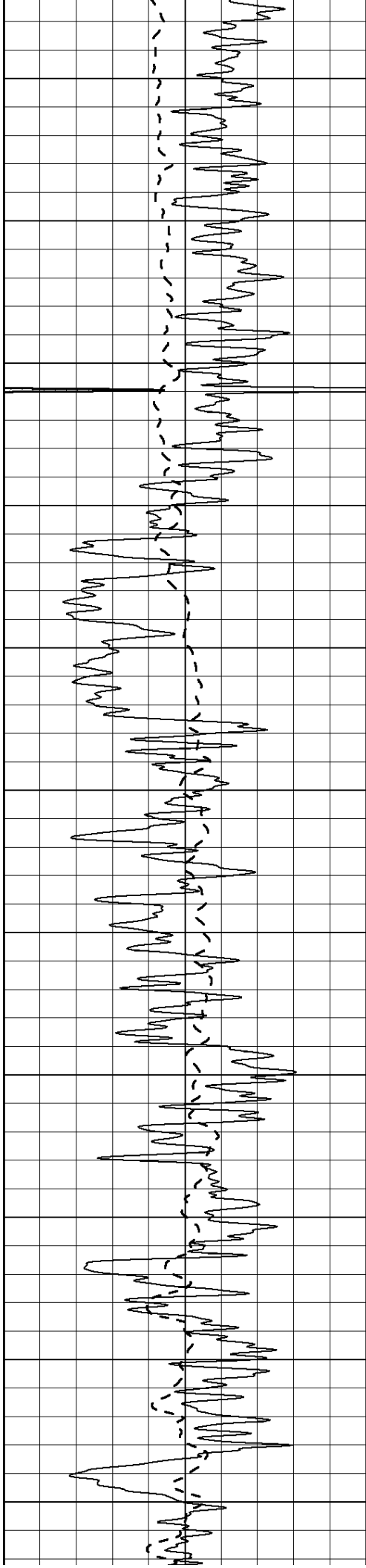
1950

2000

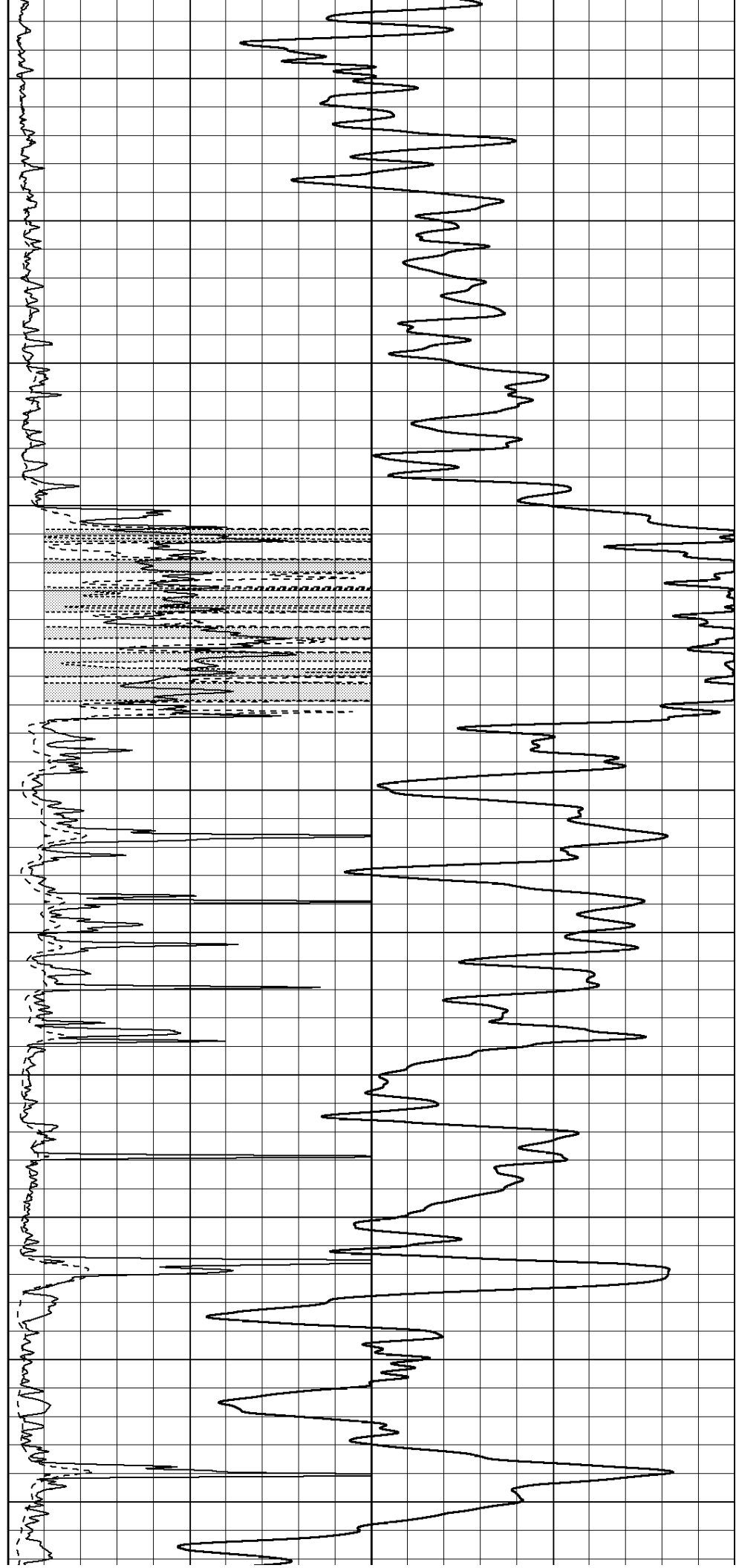
2050

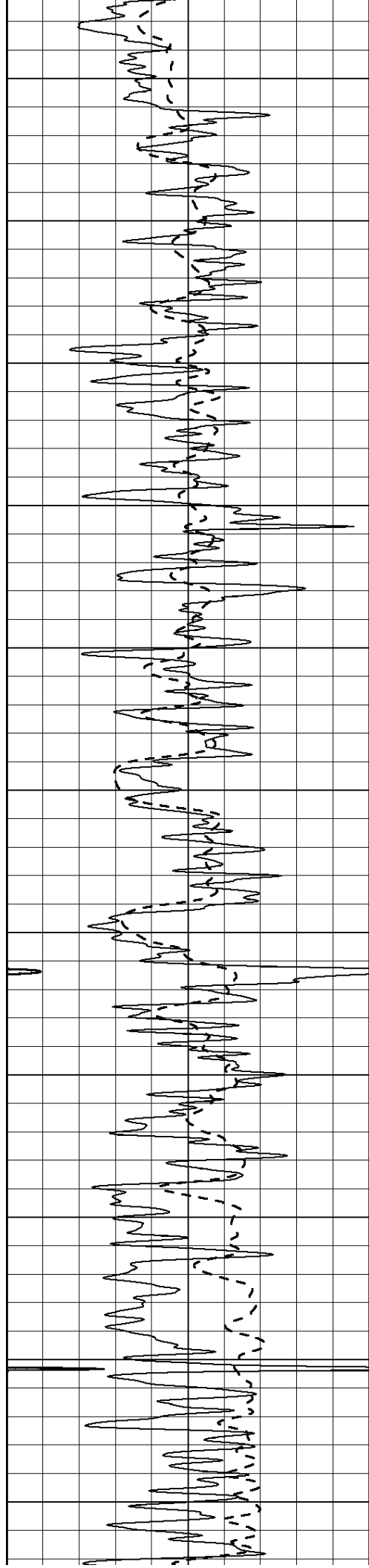
2100



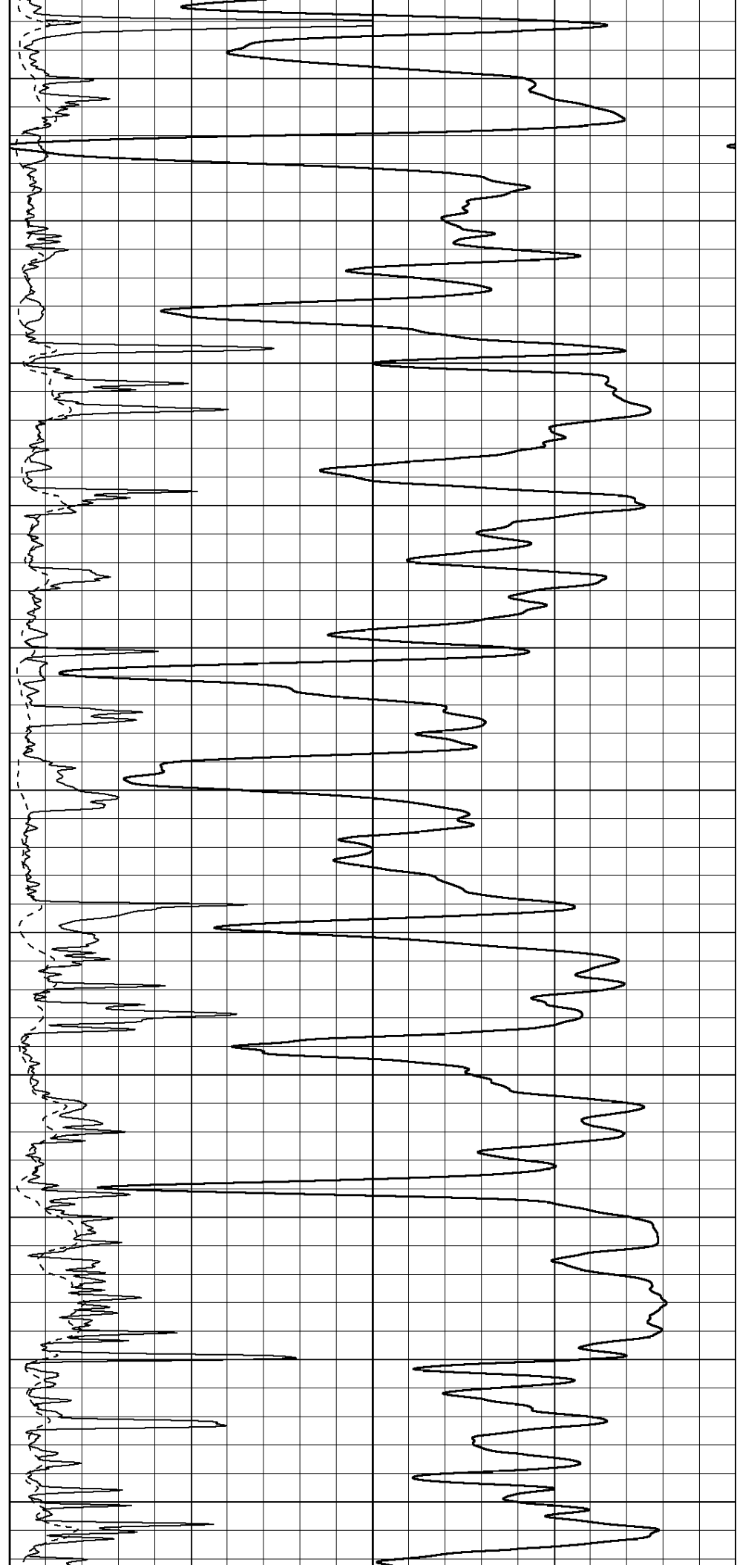


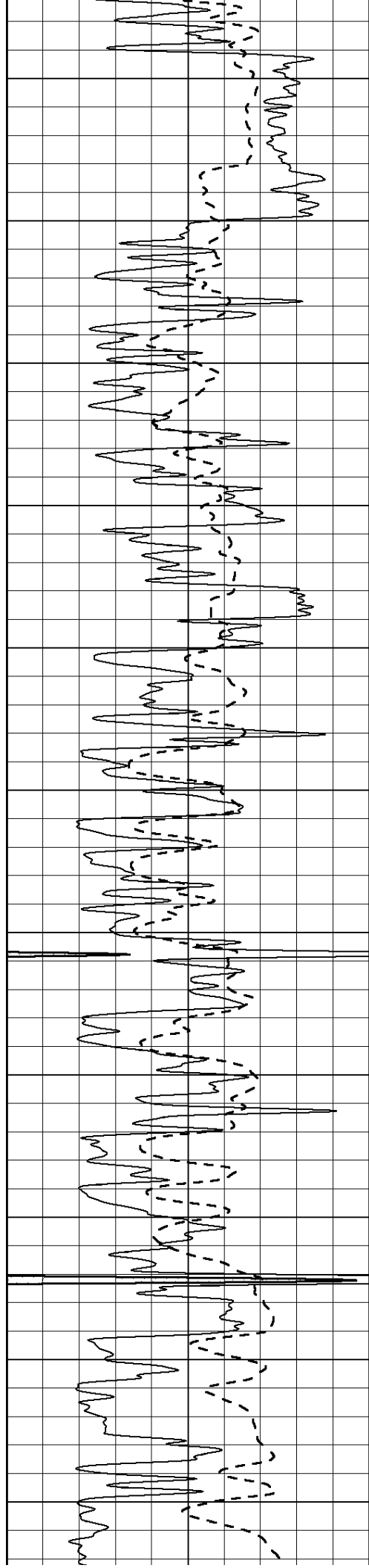
2150  
2200  
2250  
2300  
2350  
2400  
2450  
2500  
2550  
2600  
2650



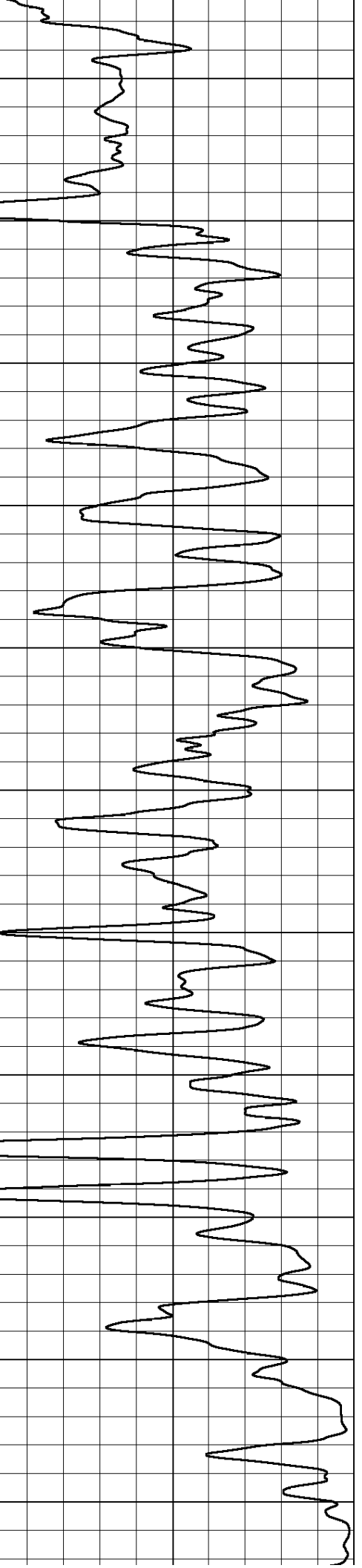
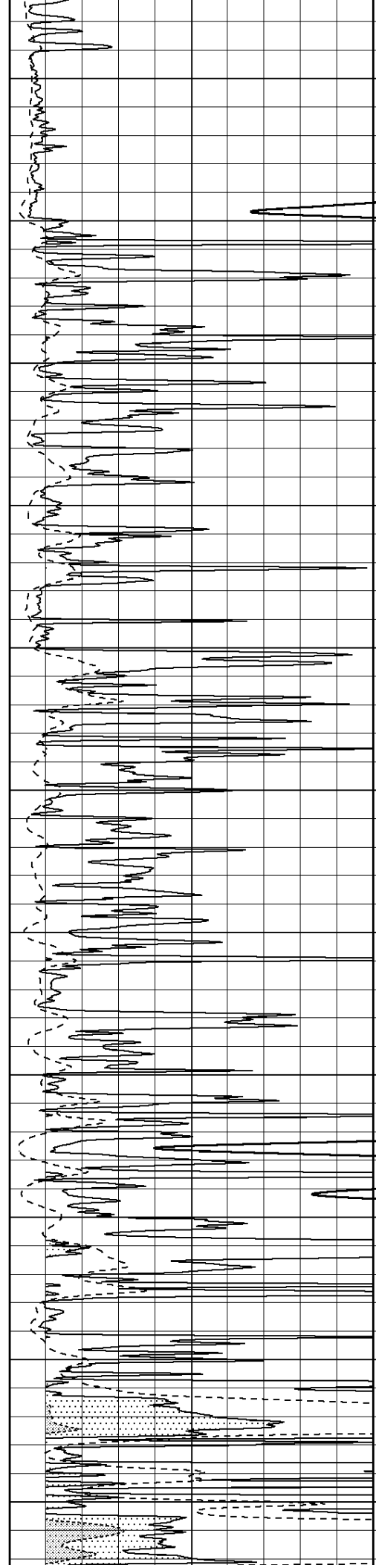


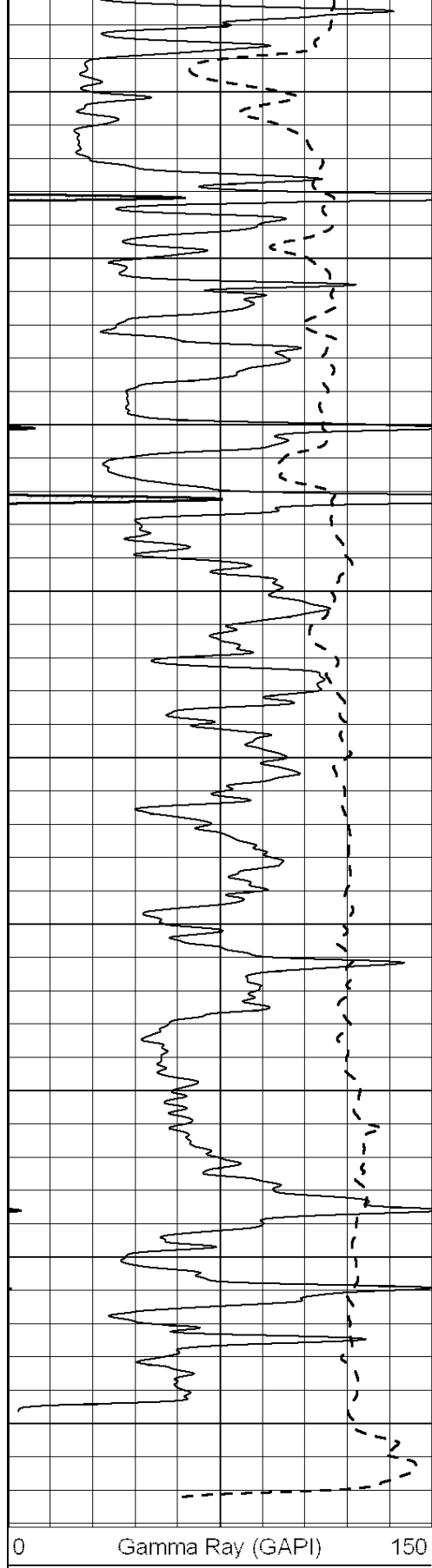
2700  
2750  
2800  
2850  
2900  
2950  
3000  
3050  
3100  
3150  
3200



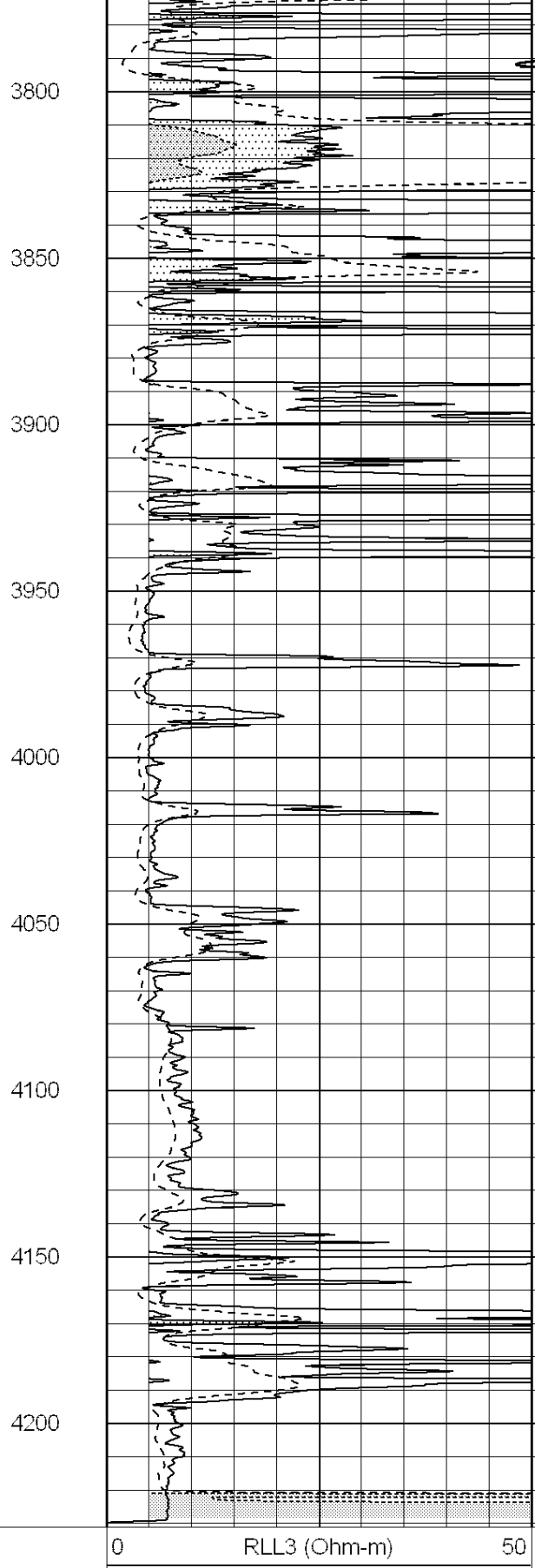


3250  
3300  
3350  
3400  
3450  
3500  
3550  
3600  
3650  
3700  
3750





0 150



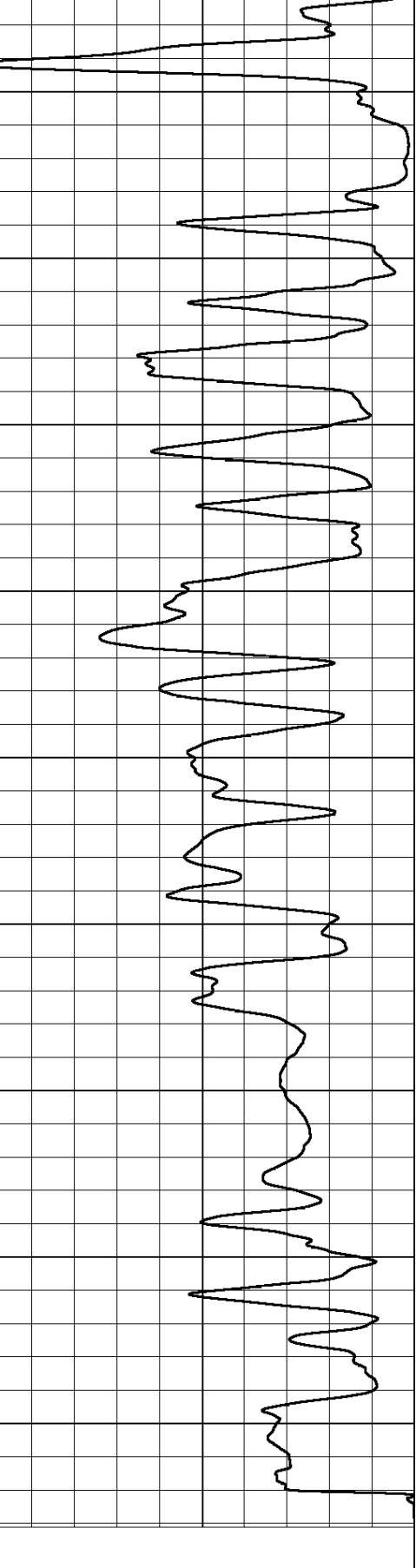
0 50

0 50

1000 CILD (mmho/m) 0

50 RILD X10 (Ohm-m) 500

50 RLL3 X10 (Ohm-m) 500

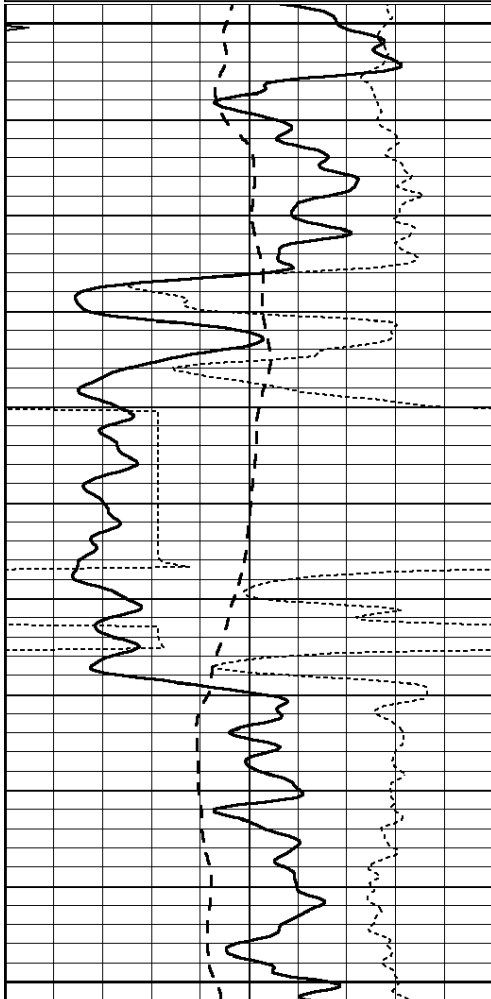


0

Dataset Pathname: pass3.3  
 Presentation Format: dil  
 Dataset Creation: Mon Sep 03 21:57:59 2012 by Calc Open-Cased 090629  
 Charted by: Depth in Feet scaled 1:240

0	GAMMA RAY (GAPI)	150
-100	SP (mV)	100
-250	RxoRt	50
0	MINMK	20

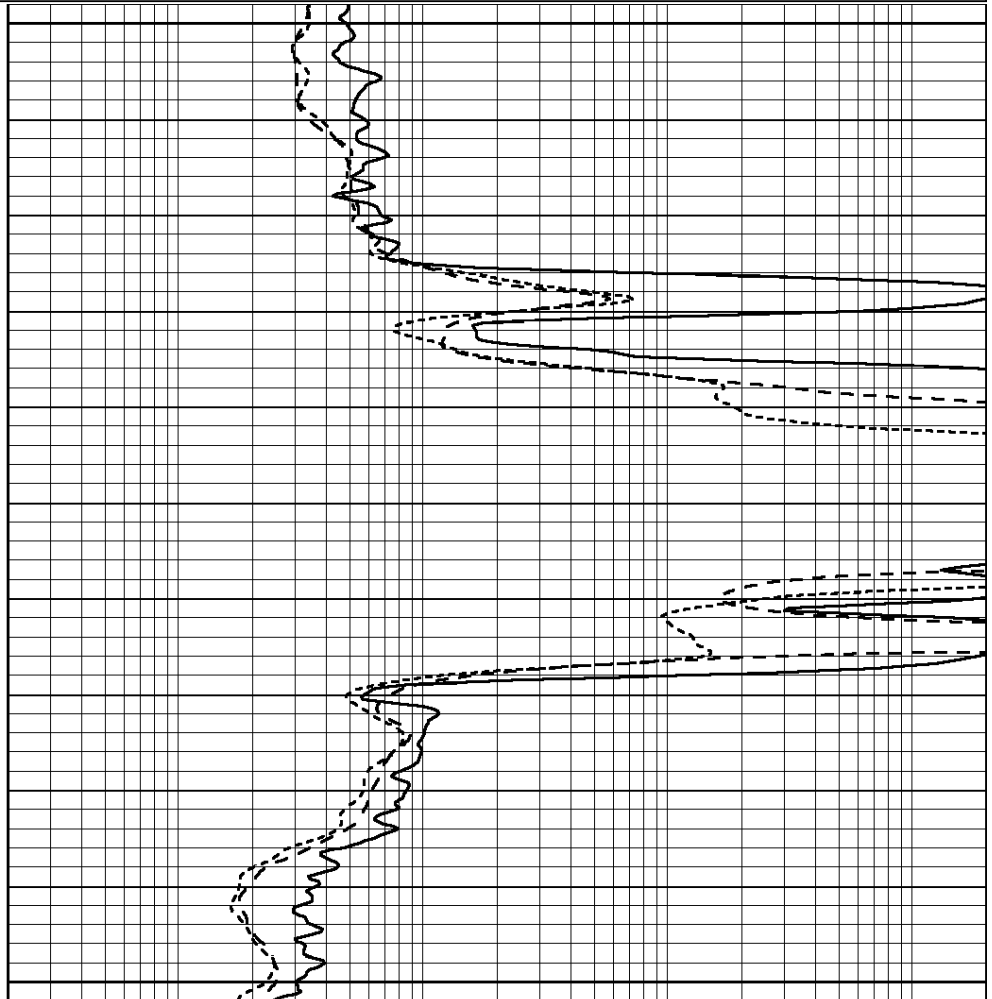
0.2	RLL3 (Ohm-m)	2000
0.2	DEEP INDUCTION (Ohm-m)	2000
0.2	MEDIUM INDUCTION (Ohm-m)	2000



1950

2000

2050



0	GAMMA RAY (GAPI)	150
-100	SP (mV)	100
-250	RxoRt	50
0	MINMK	20

0.2	RLL3 (Ohm-m)	2000
0.2	DEEP INDUCTION (Ohm-m)	2000
0.2	MEDIUM INDUCTION (Ohm-m)	2000

Database File: 009659ddn.db  
 Dataset Pathname: pass3.3  
 Presentation Format: dil  
 Dataset Creation: Mon Sep 03 21:57:59 2012 by Calc Open-Cased 090629  
 Charted by: Depth in Feet scaled 1:240

0	GAMMA RAY (GAPI)	150
-100	SP (mV)	100
-250	RxoRt	50
0	MINMK	20

0.2	RLL3 (Ohm-m)	2000
0.2	DEEP INDUCTION (Ohm-m)	2000
0.2	MEDIUM INDUCTION (Ohm-m)	2000

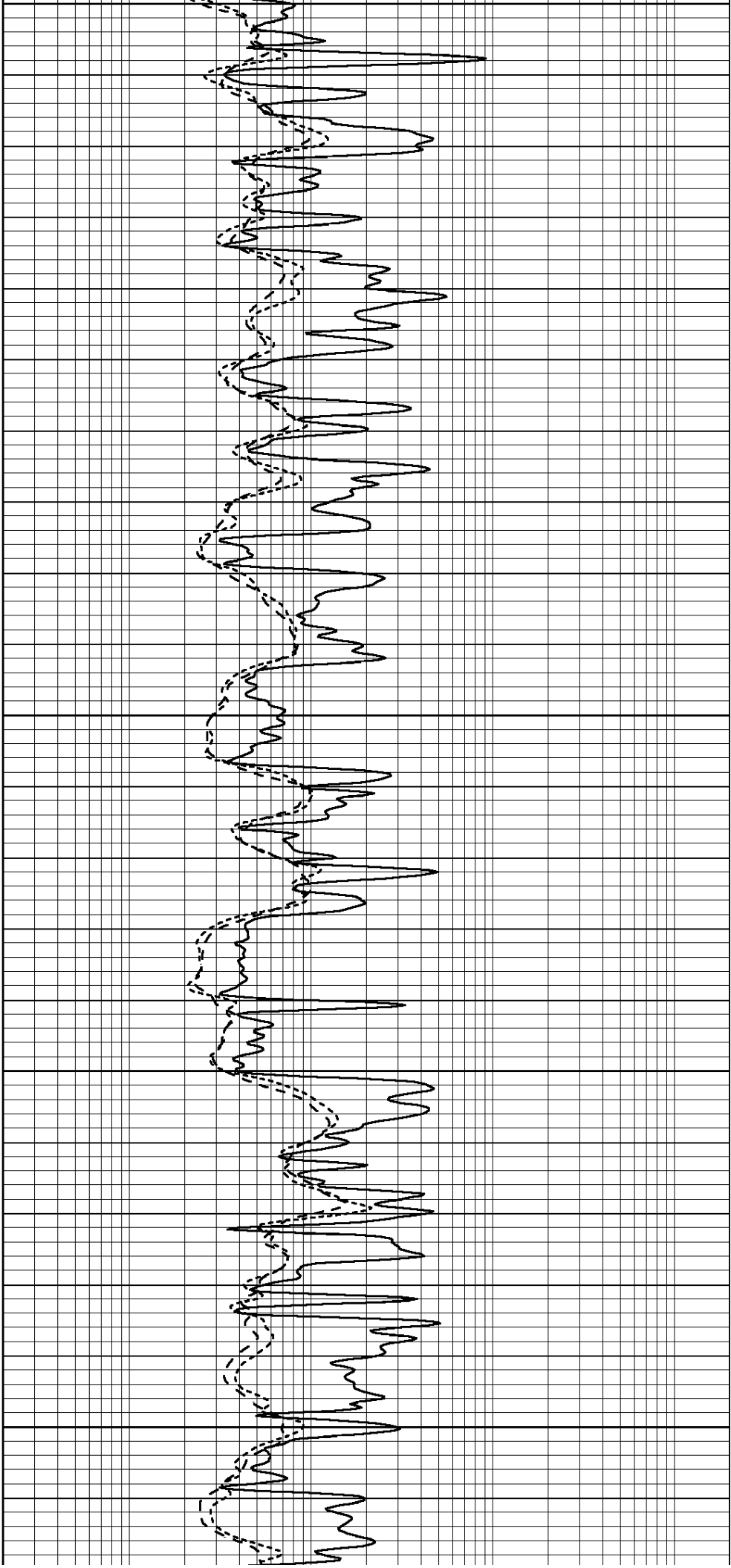
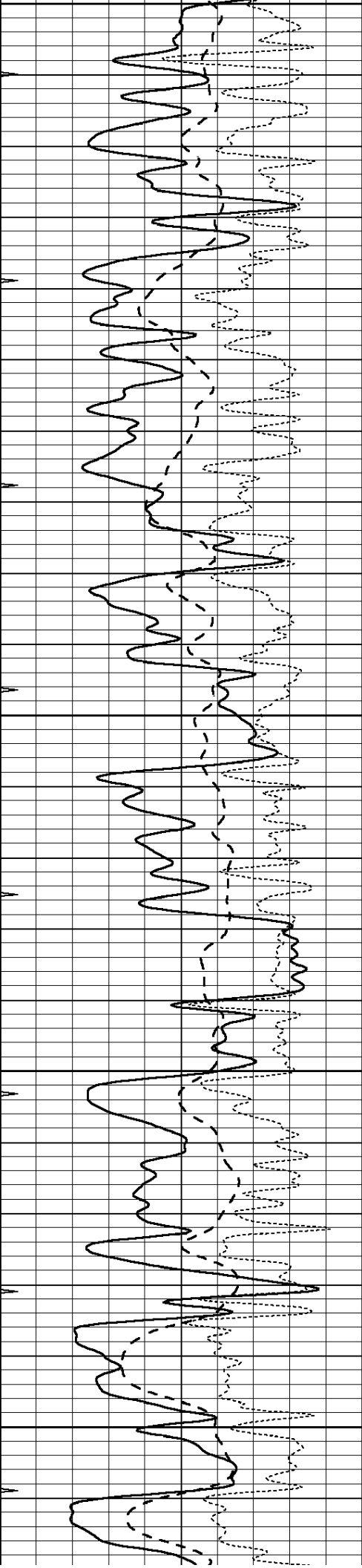
3300

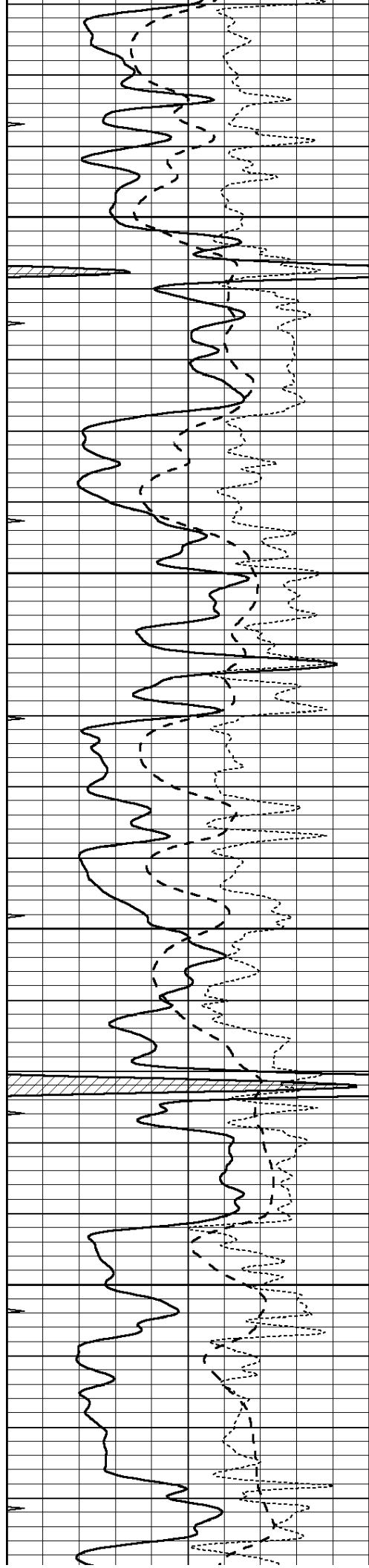
3350

3400

3450

3500



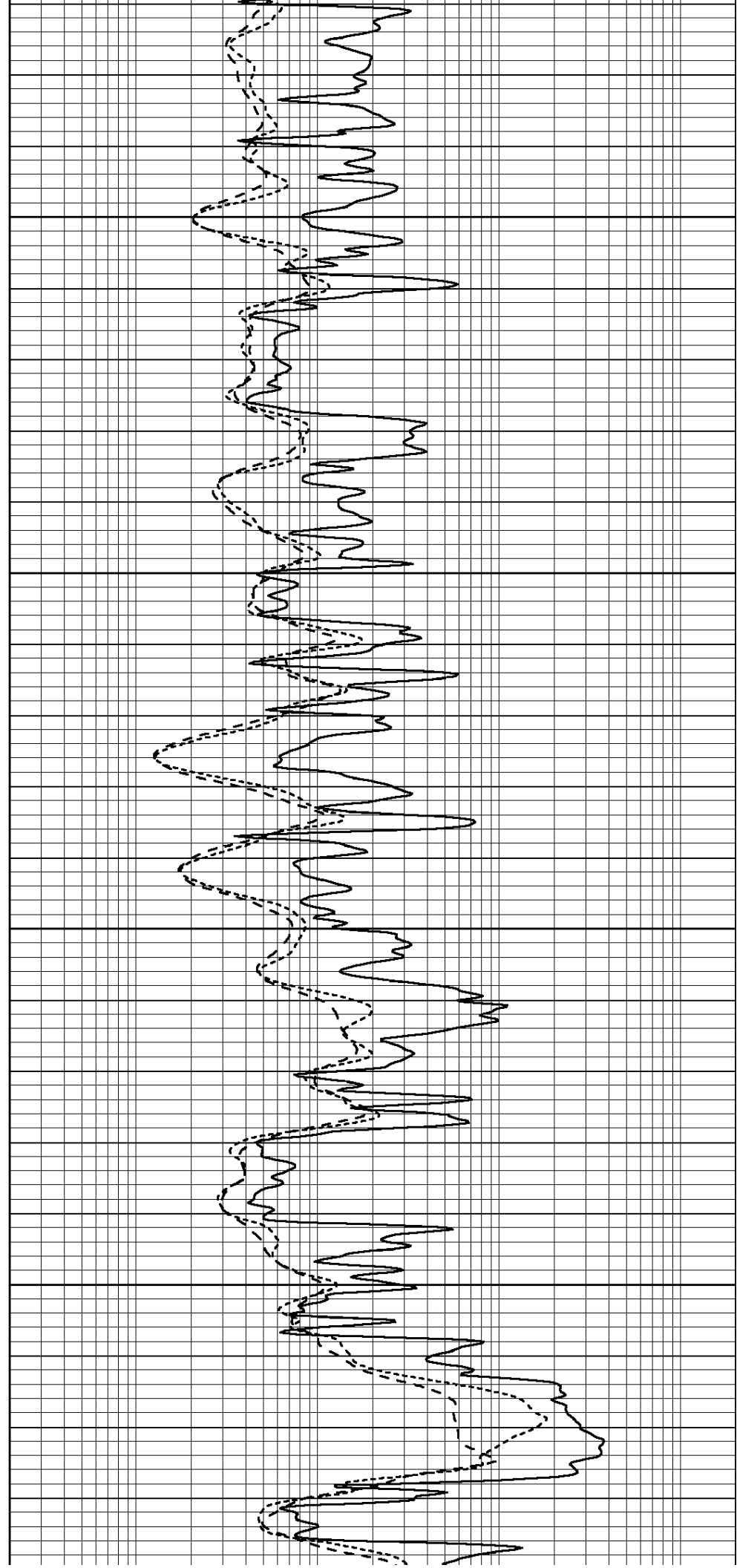


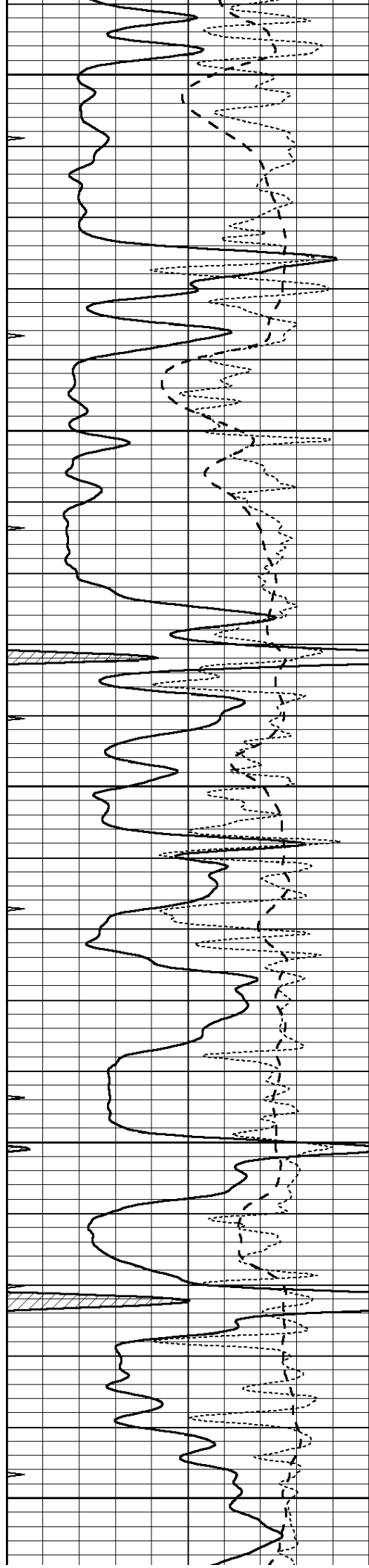
3550

3600

3650

3700





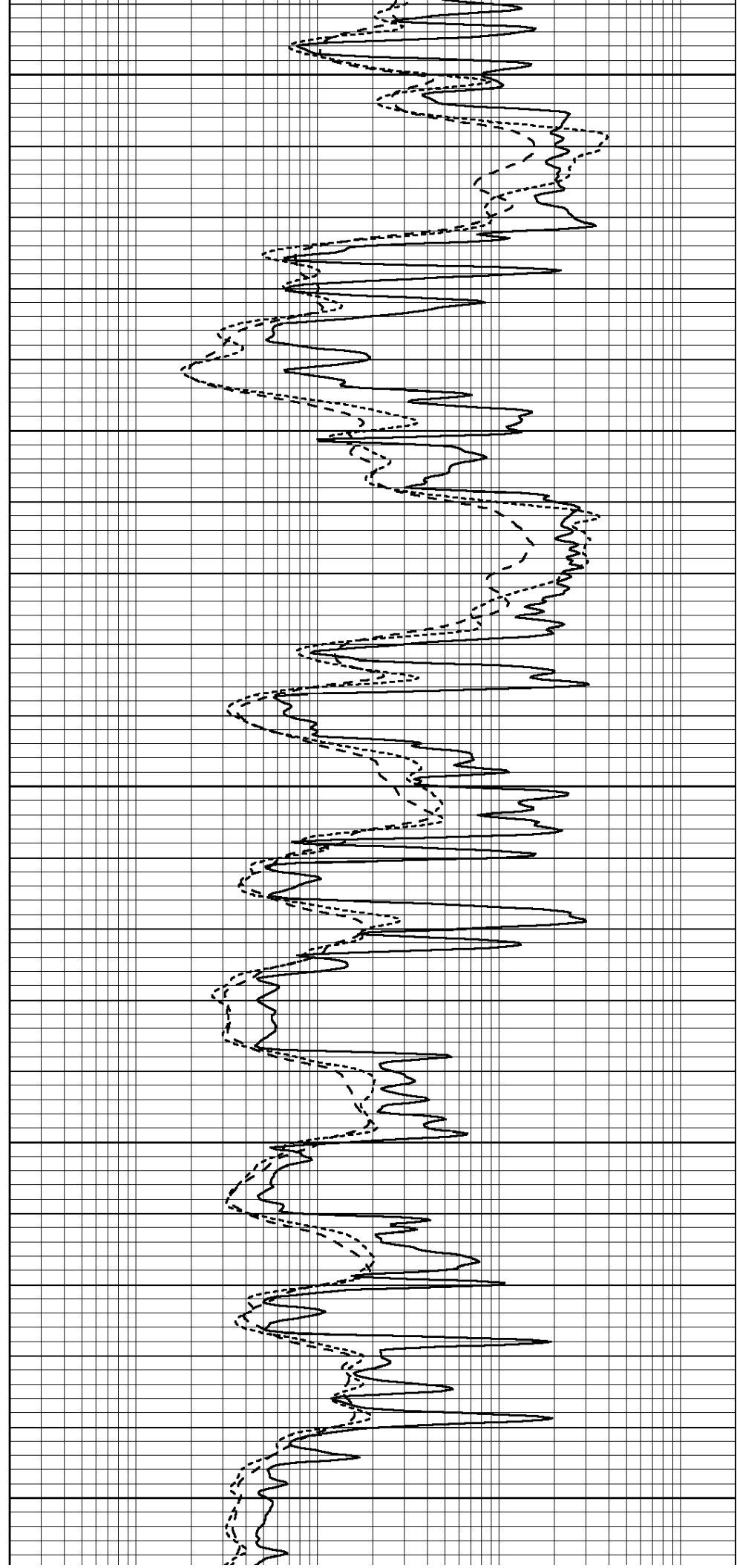
3750

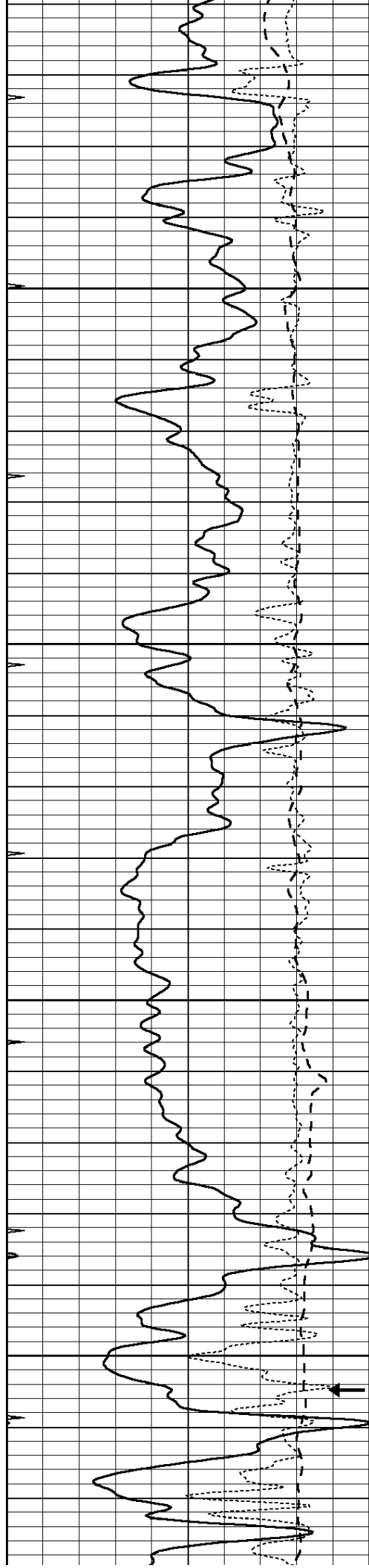
3800

3850

3900

3950





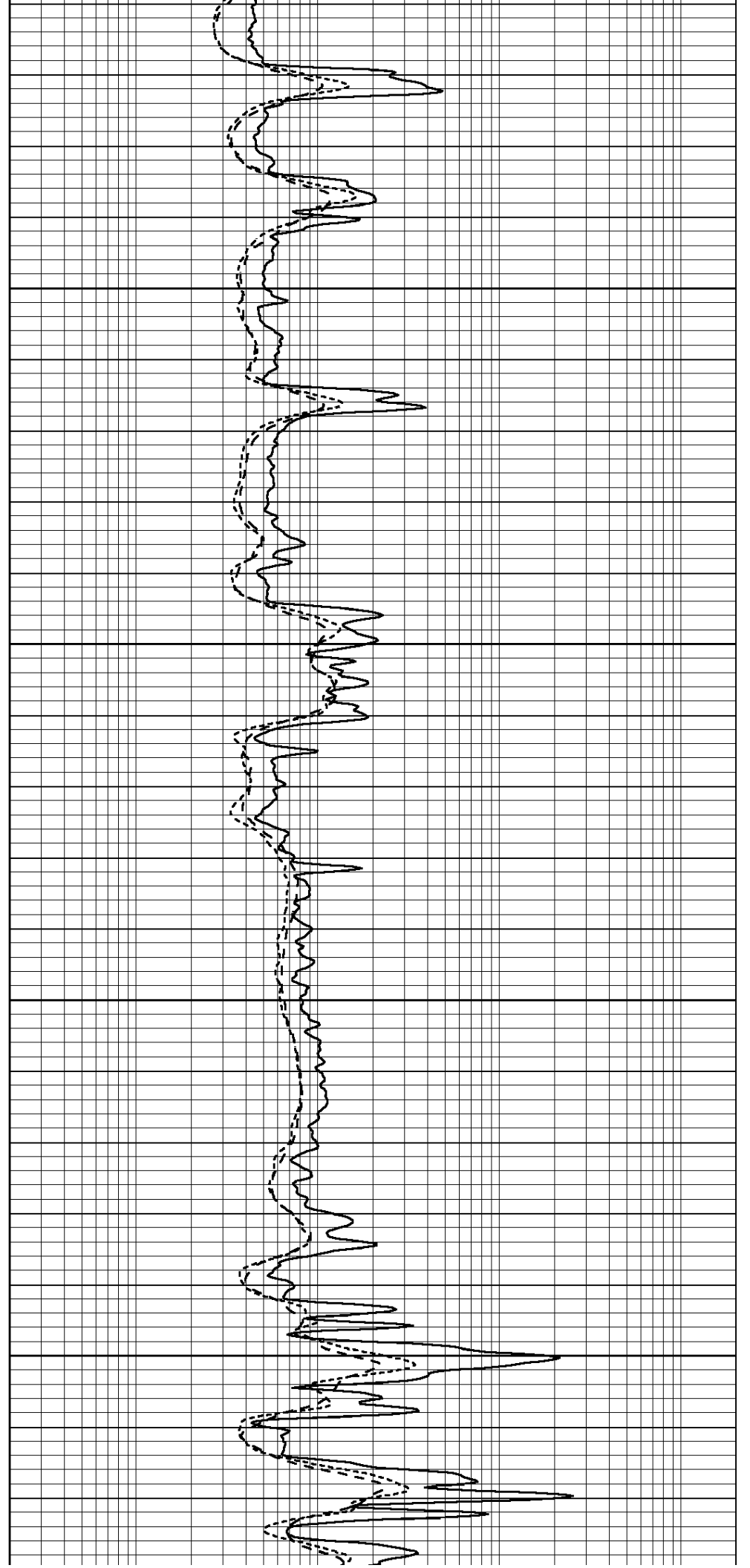
4000

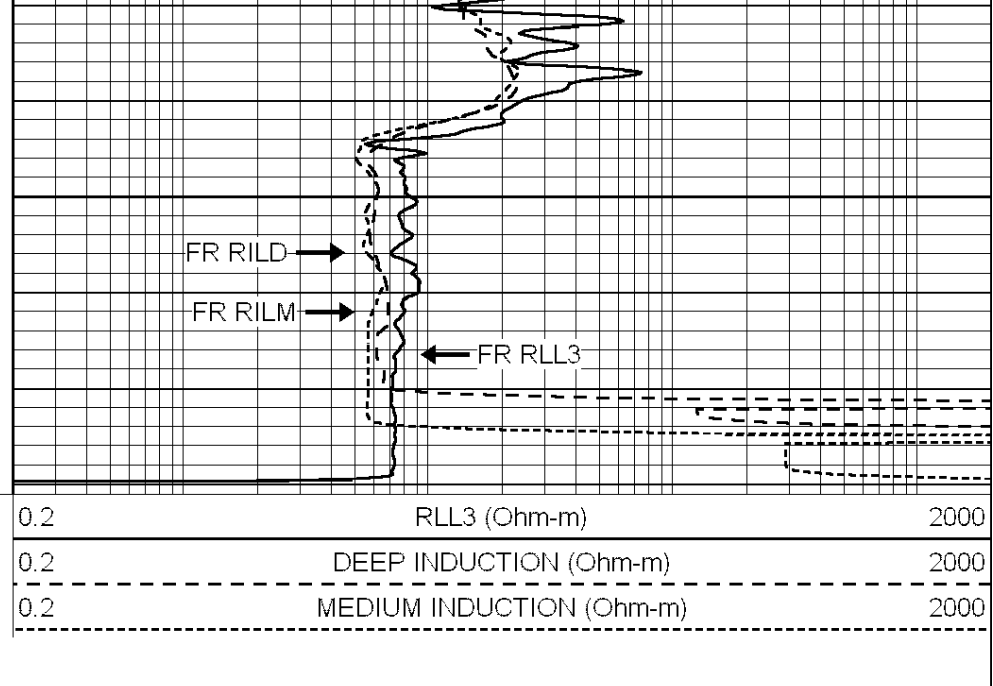
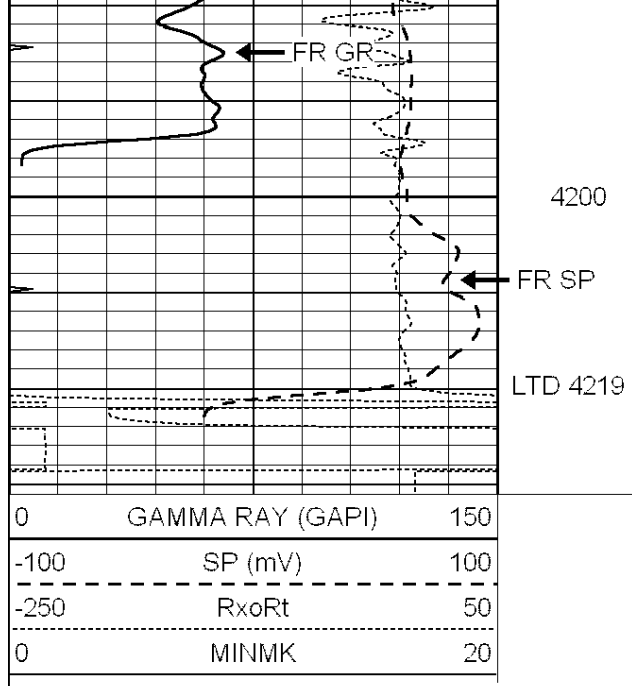
4050

4100

4150

RxoRt





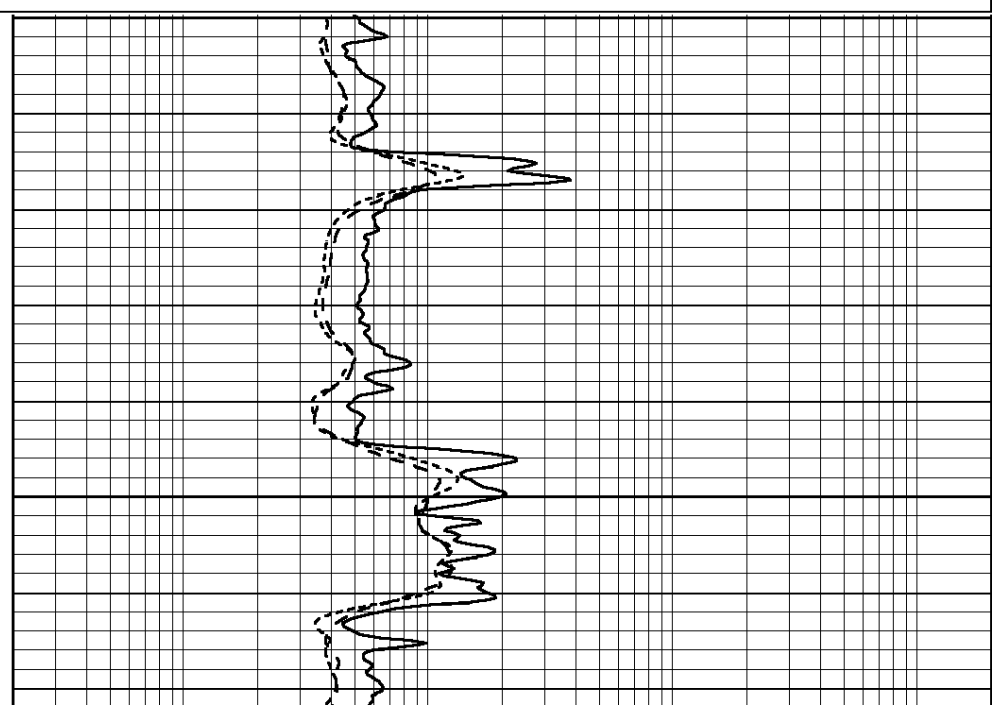
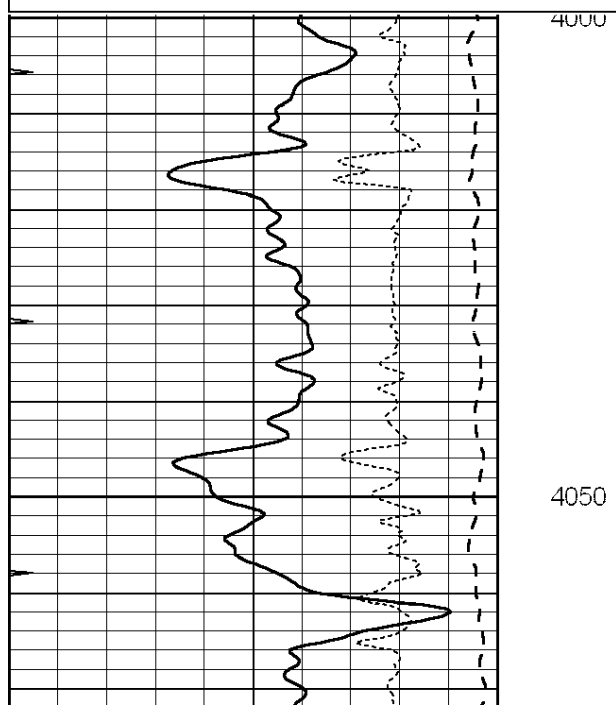
SUPERIOR  
Hays,  
Kansas

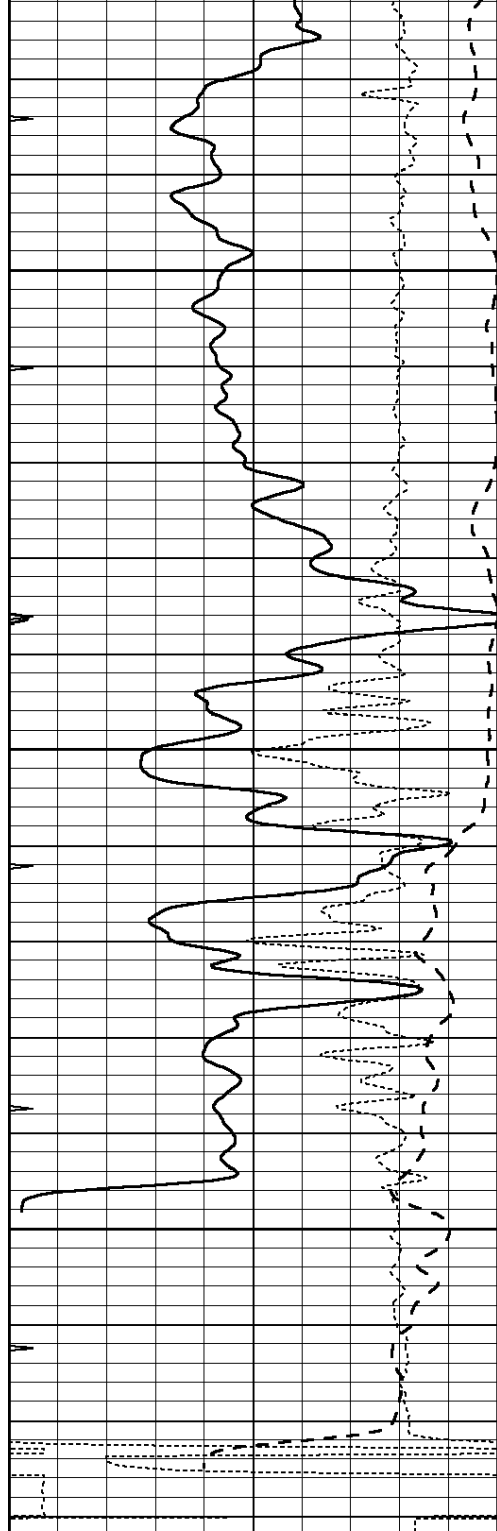
# REPEAT SECTION

Database File: 009659ddn.db  
 Dataset Pathname: pass2.3  
 Presentation Format: dil  
 Dataset Creation: Mon Sep 03 21:43:16 2012 by Calc Open-Cased 090629  
 Charted by: Depth in Feet scaled 1:240

0	GAMMA RAY (GAPI)	150
-100	SP (mV)	100
-250	RxoRt	50
0	MINMK	20

0.2	RLL3 (Ohm-m)	2000
0.2	DEEP INDUCTION (Ohm-m)	2000
0.2	MEDIUM INDUCTION (Ohm-m)	2000



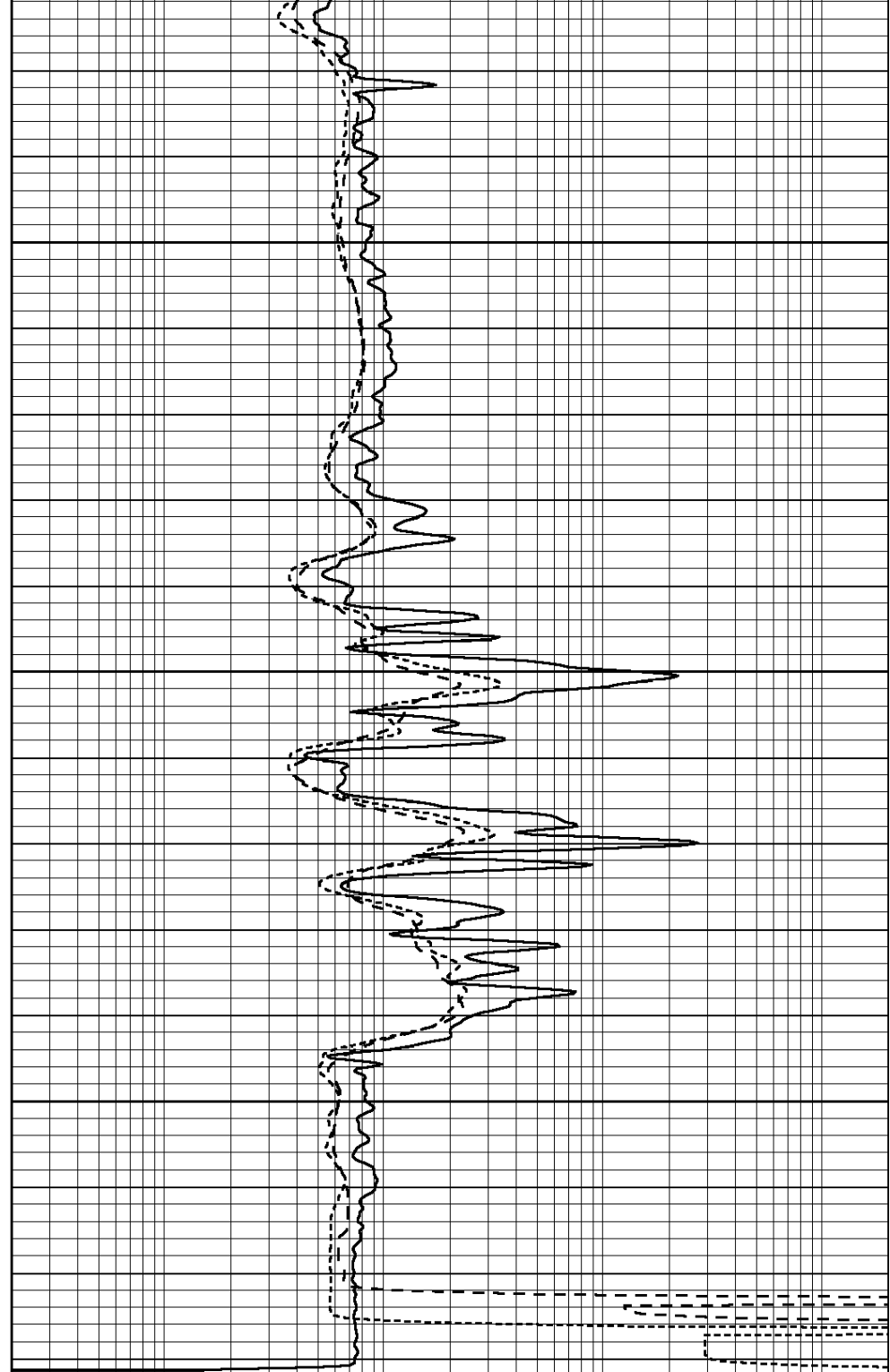


4100

4150

4200

0	GAMMA RAY (GAPI)	150
-100	SP (mV)	100
-250	RxoRt	50
0	MINMK	20



0.2	RLL3 (Ohm-m)	2000
0.2	DEEP INDUCTION (Ohm-m)	2000
0.2	MEDIUM INDUCTION (Ohm-m)	2000

Calibration Report

Database File: 009659ddn.db  
 Dataset Pathname: pass3.3  
 Dataset Creation: Mon Sep 03 21:57:59 2012 by Calc Open-Cased 090629

Dual Induction Calibration Report

Serial-Model: DIL5-GEAR  
 Performed: Wed Aug 29 20:23:16 2012

		Readings			References			Results	
Loop:	Air	Loop		Air	Loop		m	b	
Deep	0.004	0.654	V	0.000	400.000	mmho/m	490.000	-15.000	
Medium	-0.005	0.737	V	0.000	462.500	mmho/m	530.000	-10.000	
Internal:	Zero	Cal		Zero	Cal		m	b	
Deep	0.006	0.655	V	0.000	400.000	mmho/m	615.668	-3.483	
Medium	0.010	0.747	V	0.000	462.500	mmho/m	627.607	-6.064	

Compensated Density Calibration Report

Serial-Model: GEAR2-GEARHART  
 Source / Verifier: 147 / 147  
 Master Calibration Performed: Wed Aug 29 19:55:57 2012

Master Calibration

	Density		Far Detector	Near Detector	
Magnesium	1.710	g/cc	1451.87	701.81	cps
Aluminum	2.590	g/cc	324.88	493.46	cps
Spine Angle = 76.76			Density/Spine Ratio = 0.572		
	Size		Reading		
Small Ring	8.00	in	5.48	V	
Large Ring	14.00	in	7.58	V	

Compensated Neutron Calibration Report

Serial Number: NUE\_2I  
 Tool Model: G

CALIBRATION

Detector	Readings		Target		Normalization
Short Space	1.00	cps	1.00	cps	1.0000
Long Space	1.00	cps	1.00	cps	1.0000

Gamma Ray Calibration Report

Serial Number: GR5  
 Tool Model: OPEN  
 Performed: Wed Aug 08 15:07:38 2012

Calibrator Value: 1.0 GAPI

Background Reading: 0.0 cps  
 Calibrator Reading: 1.0 cps

Sensitivity: 0.7500 GAPI/cps