



**SUPERIOR
Hays,
Kansas**

**COMPENSATED
DENSITY / NEUTRON
LOG**

Company **REILLY OIL COMPANY, INC.**
Well **LINDA # 1-7**
Field **WILDCAT**
County **TREGO** State **KANSAS**

Company **REILLY OIL COMPANY, INC.**
Well **LINDA # 1-7**
Field **WILDCAT**
County **TREGO**
State **KANSAS**

Location: **API # : 15-195-22808-00-00**
933' FSL & 1205' FEL
SEC 16 TWP 11S RGE 24W
Permanent Datum **GROUND LEVEL** Elevation **2370**
Log Measured From **KELLY BUSHING 5' A.G.L.**
Drilling Measured From **KELLY BUSHING**

Other Services
DIL/MEL
Elevation
K.B. 2375
D.F. 2373
G.L. 2370

Date	9/3/12		
Run Number	ONE		
Depth Driller	4220		
Depth Logger	4219		
Bottom Logged Interval	4195		
Top Log Interval	3300		
Casing Driller	218		
Casing Logger	216		
Bit Size	7.875		
Type Fluid in Hole	CHEMICAL MUD		
Density / Viscosity	9.3 / 63	CHLORIDES 1,900 PPM	
pH / Fluid Loss	10.5 / 7.8		
Source of Sample	FLOWLINE		
Rim @ Meas. Temp	0.90 @ 96F		
Rmf @ Meas. Temp	0.68 @ 86F		
Rmc @ Meas. Temp	1.08 @ 86F		
Source of Rmf / Rmc	MEASURED		
Rim @ BHT	0.90 @ 118F		
Time Circulation Stopped	2 HOURS		
Time Logger on Bottom			
Maximum Recorded Temperature	118F		
Equipment Number	860		
Location	HAYS, KS.		
Recorded By	IAN MABB	JEFF GRONIEWEG	
Witnessed By	DUSTY RHOADES		

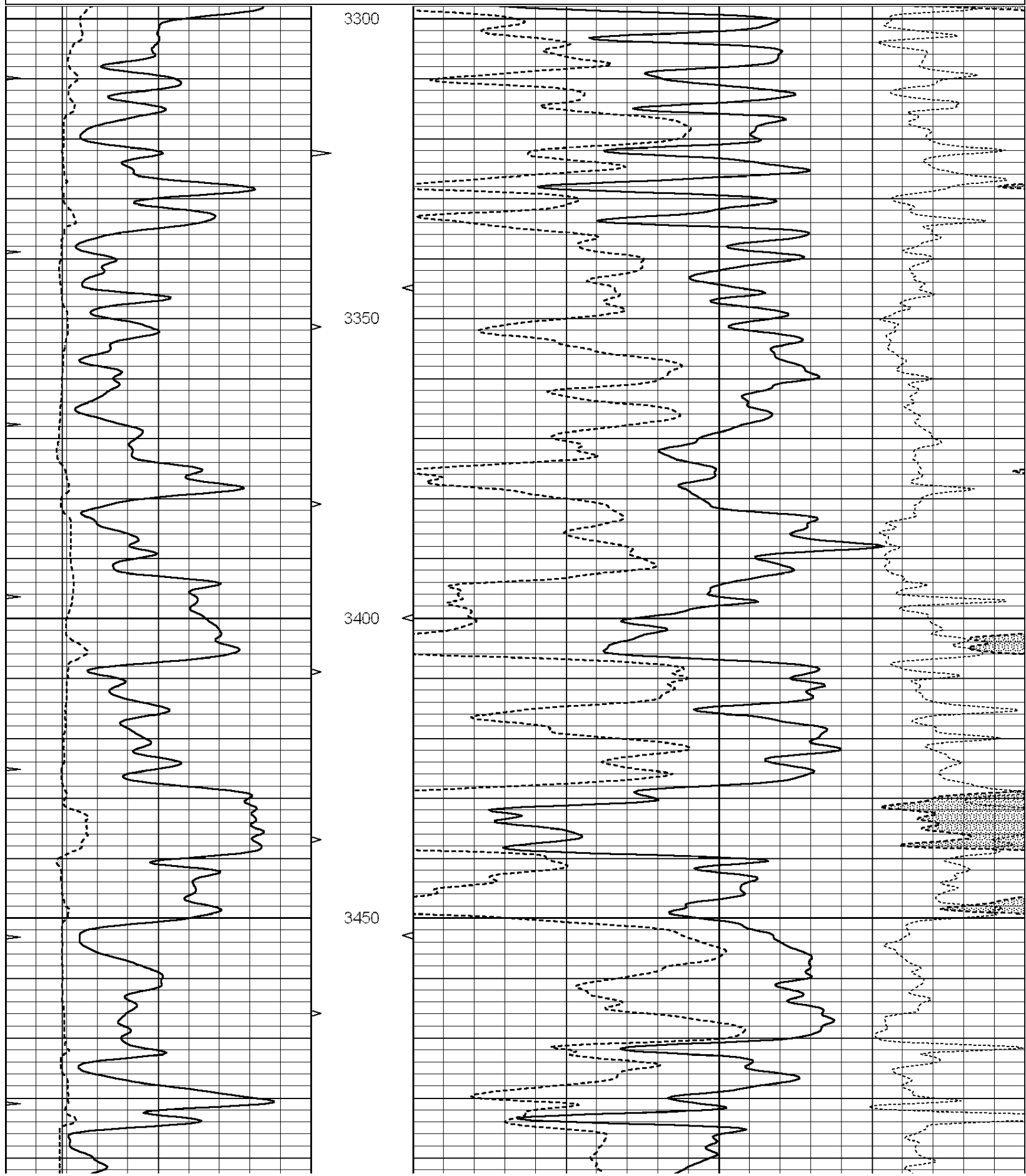
<<< Fold Here >>>

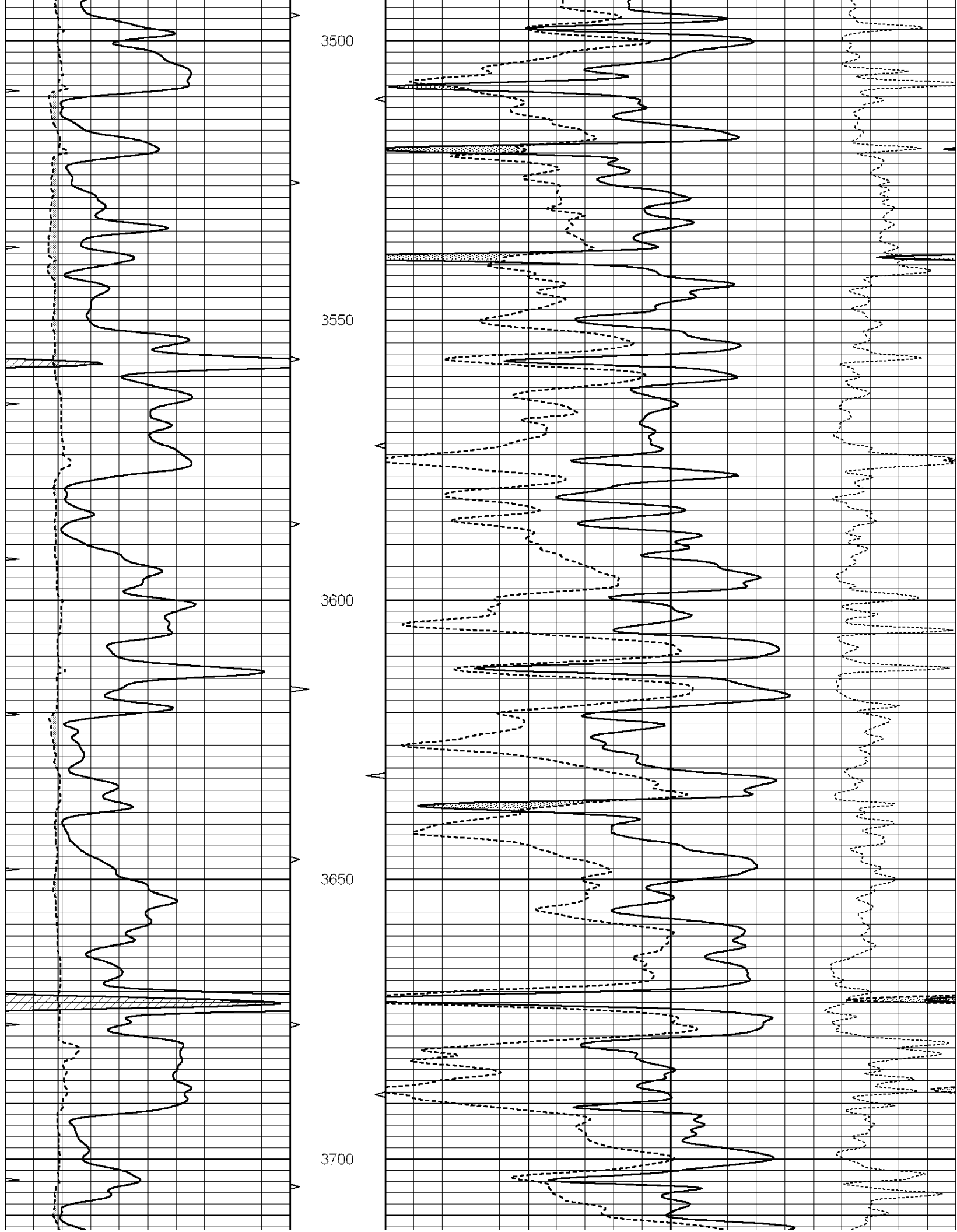
All interpretations are opinions based on inferences from electrical or other measurements and we cannot and do not guarantee the accuracy or correctness of any interpretation, and we shall not, except in the case of gross or willful negligence on our part, be liable or responsible for any loss, costs, damages, or expenses incurred or sustained by anyone resulting from any interpretation made by any of our officers, agents or employees. These interpretations are also subject to our general terms and conditions set out in our current Price Schedule.

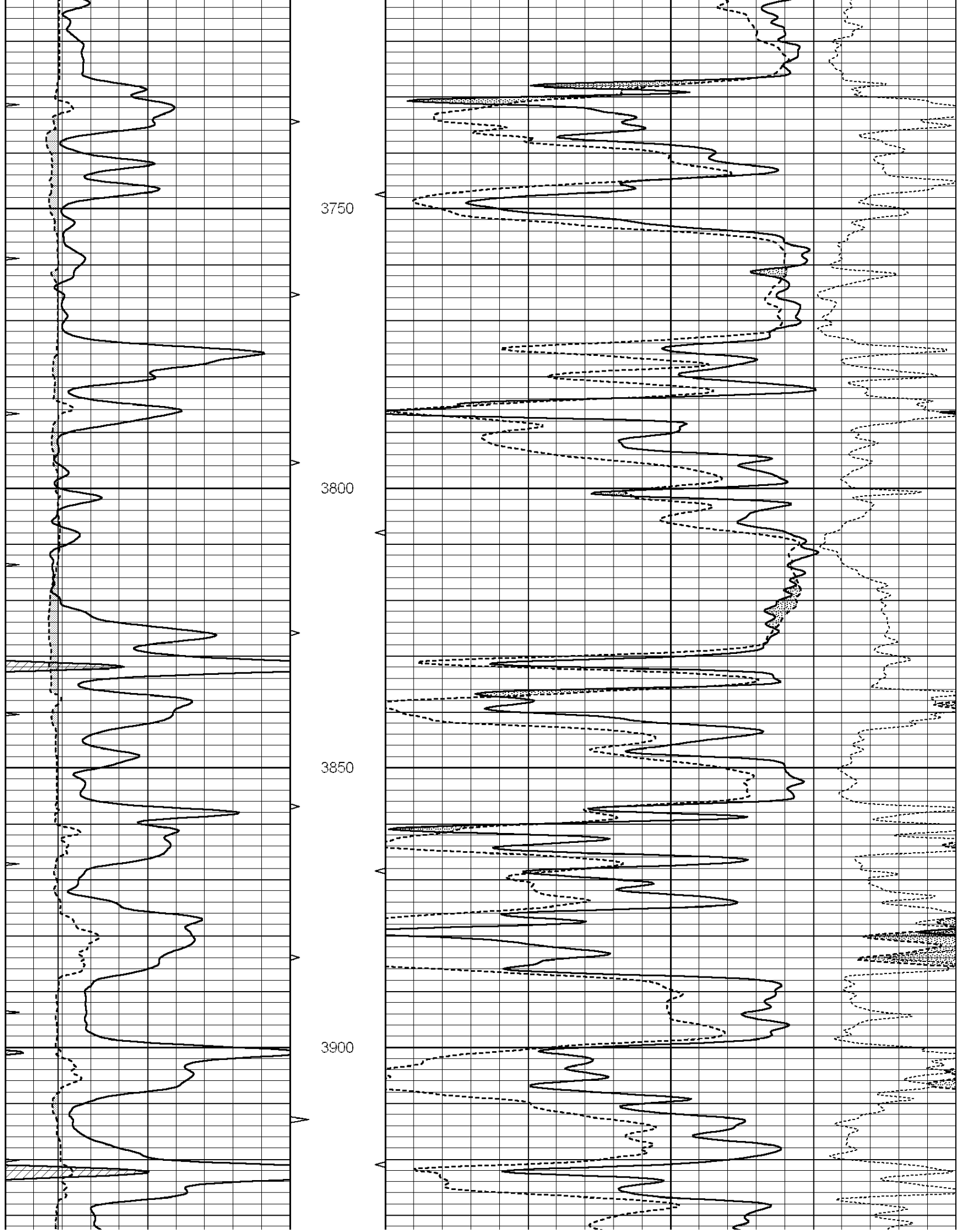
Comments

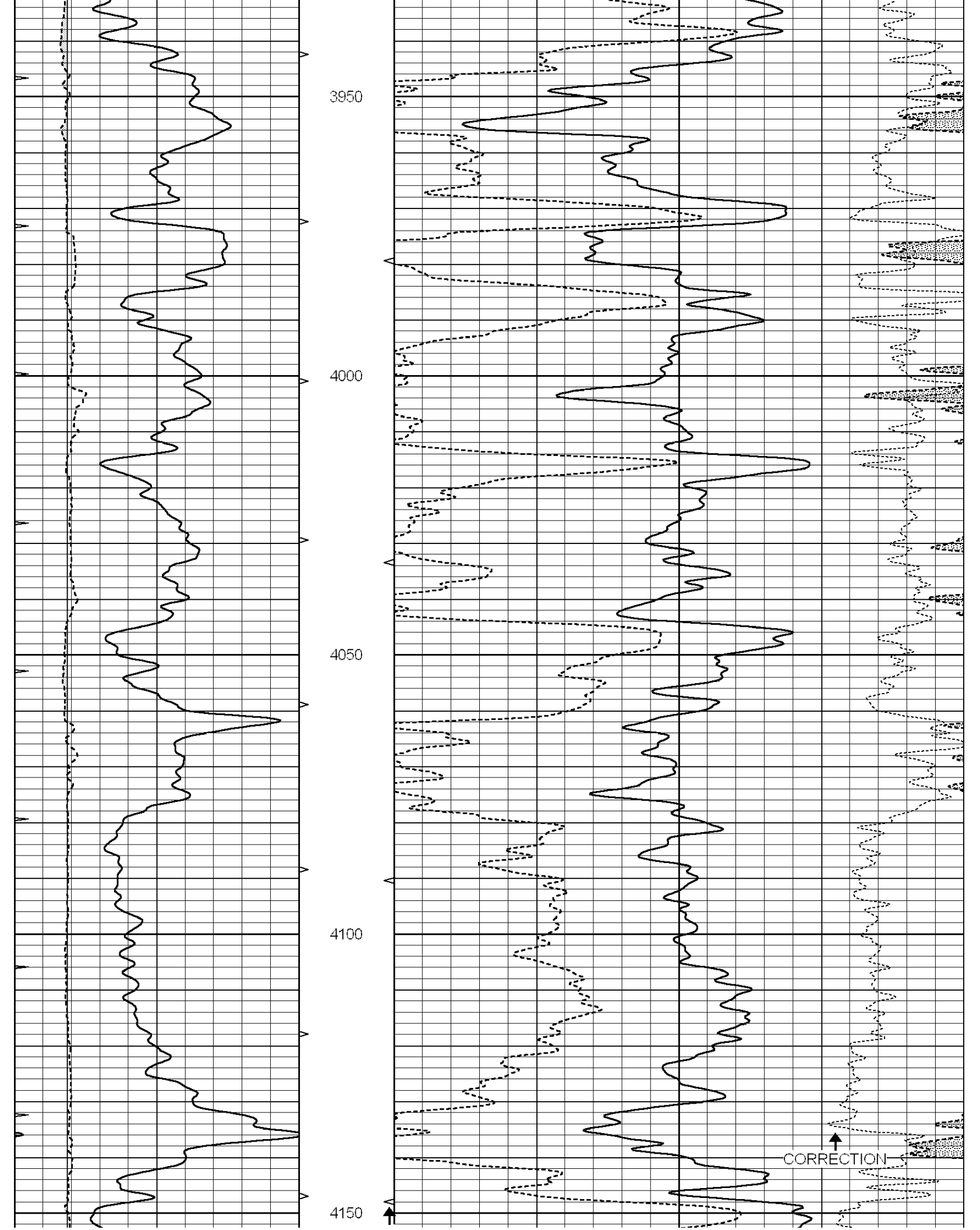
THANK YOU FOR USING SUPERIOR WELL SERVICES
785-628-6395
I-70 & VODA, 2.5 N, 1W, 3 N TO RD C, 3/4 E, N INTO

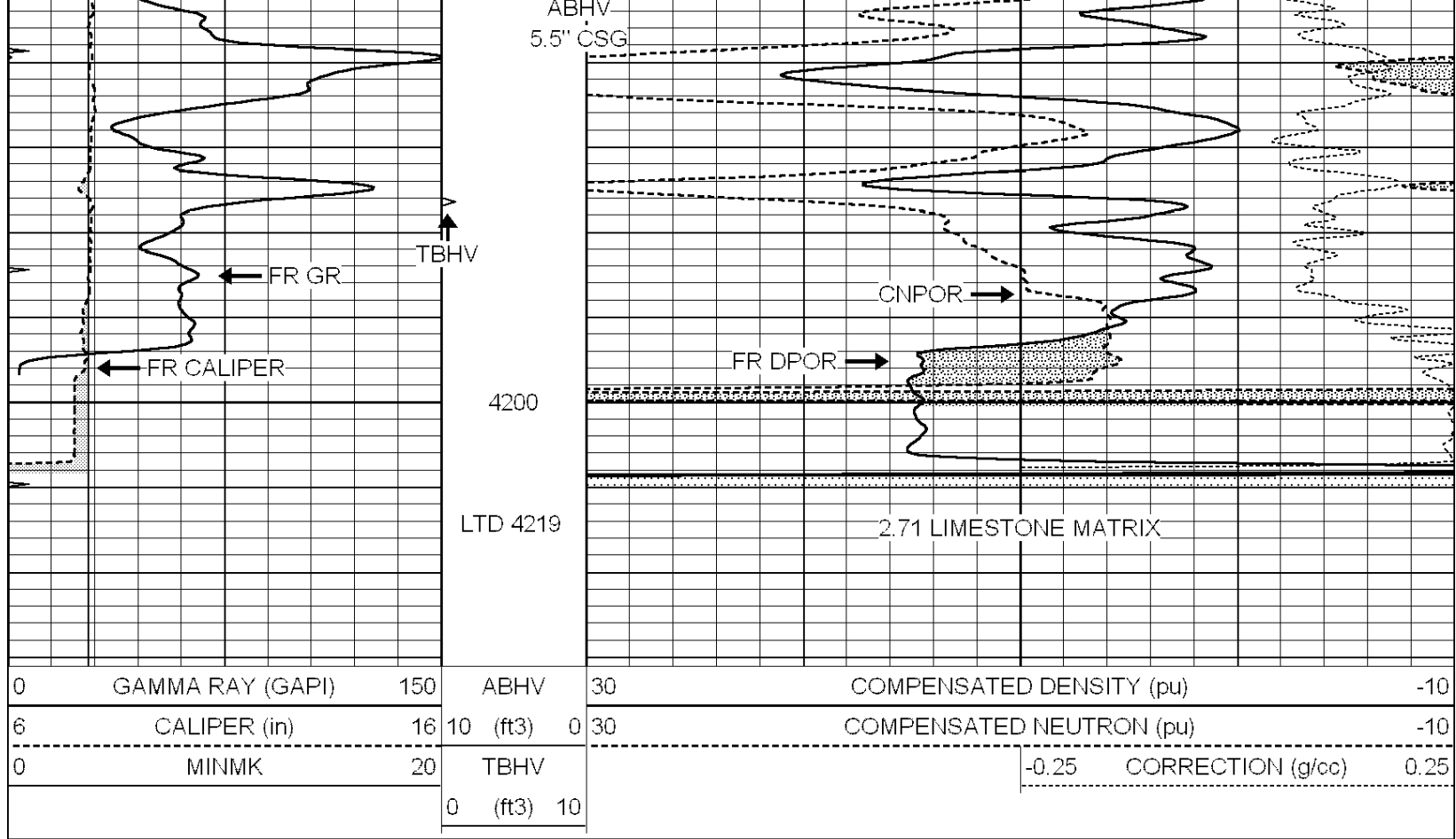
0	GAMMA RAY (GAPI)	150	ABHV	30	COMPENSATED DENSITY (pu)	-10
6	CALIPER (in)	16	10 (ft3)	0 30	COMPENSATED NEUTRON (pu)	-10
0	MINMK	20	TBHV		-0.25 CORRECTION (g/cc)	0.25
			0 (ft3)	10		









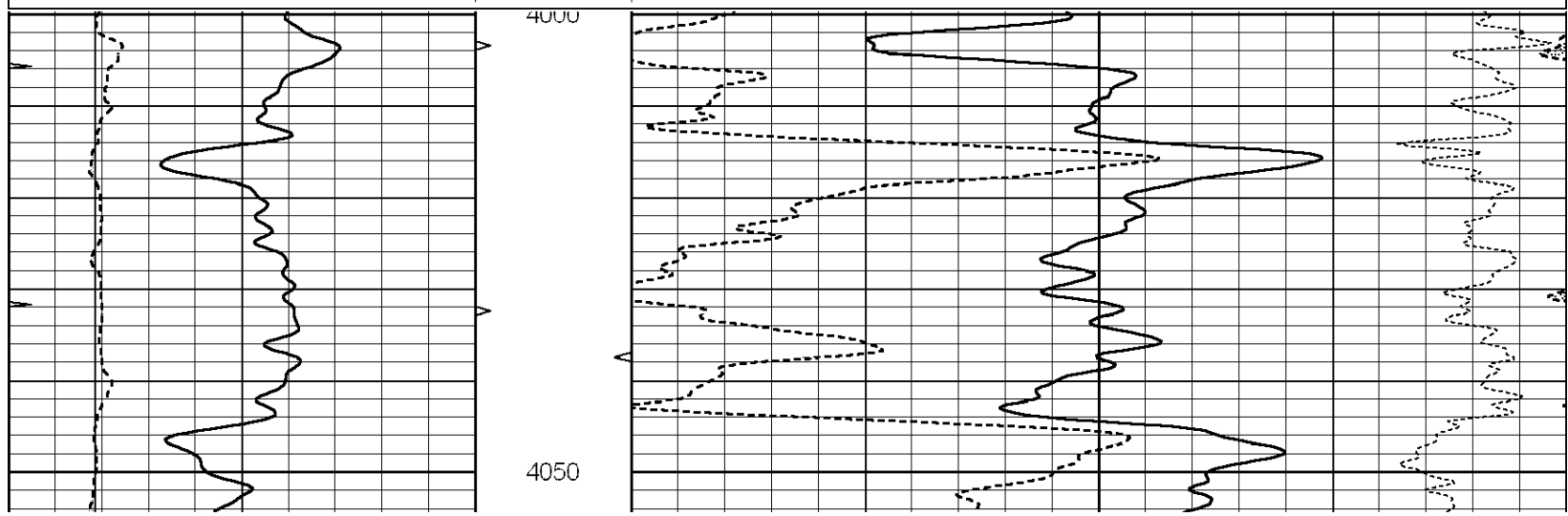


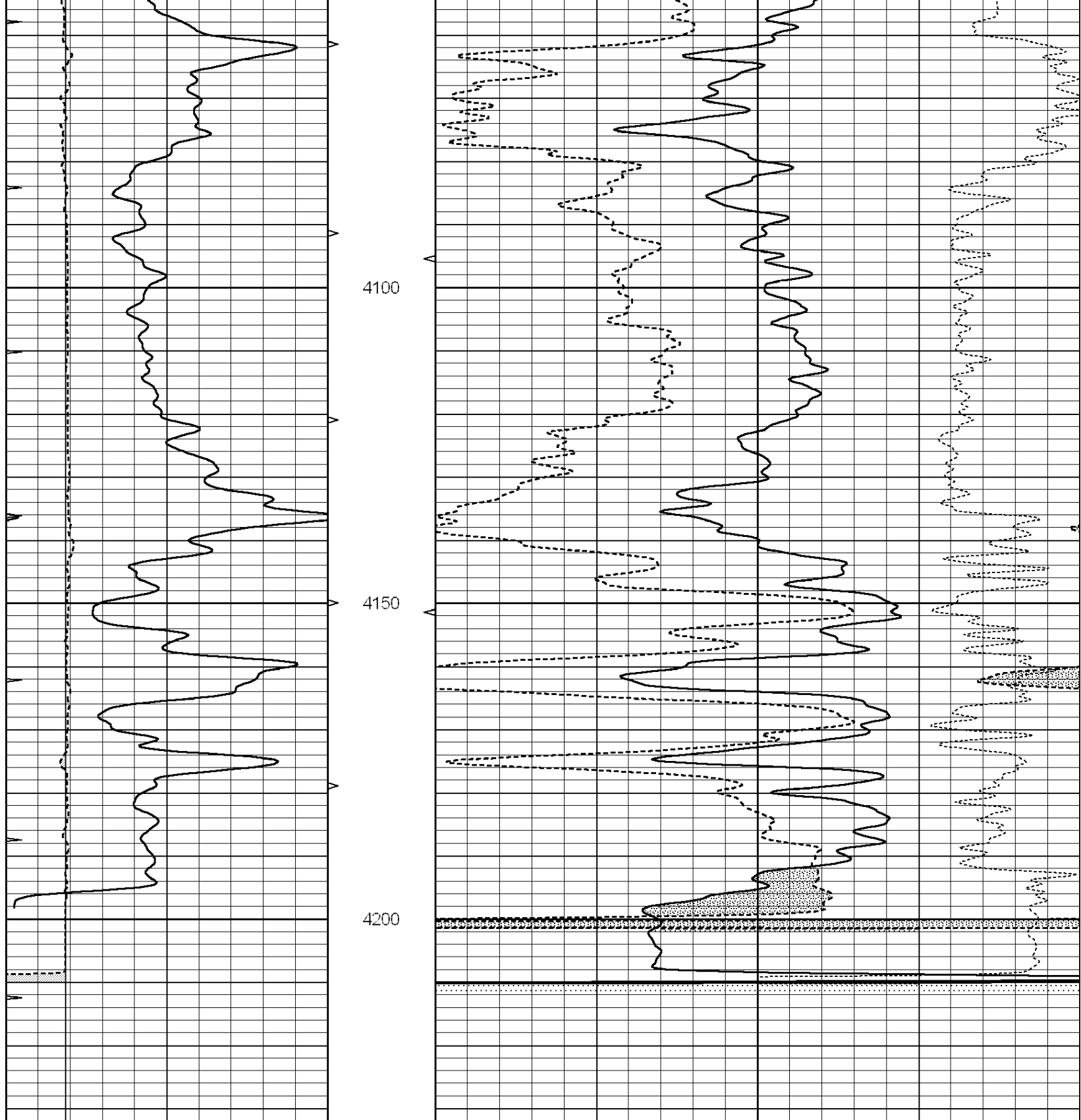
SUPERIOR
Hays,
Kansas

REPEAT SECTION

Database File: 009659ddn.db
 Dataset Pathname: pass2.3
 Presentation Format: den_neu
 Dataset Creation: Mon Sep 03 21:43:16 2012 by Calc Open-Cased 090629
 Charted by: Depth in Feet scaled 1:240

0	GAMMA RAY (GAPI)	150	ABHV	30	COMPENSATED DENSITY (pu)	-10
6	CALIPER (in)	16	10 (ft3) 0	30	COMPENSATED NEUTRON (pu)	-10
0	MINMK	20	TBHV		-0.25 CORRECTION (g/cc)	0.25
			0 (ft3) 10			





0	GAMMA RAY (GAPI)	150	ABHV	30	COMPENSATED DENSITY (pu)	-10
6	CALIPER (in)	16	10 (ft3)	0 30	COMPENSATED NEUTRON (pu)	-10
0	MINMK	20	TBHV		-0.25	CORRECTION (g/cc)
			0 (ft3)	10		0.25

Calibration Report

Database File: 009659ddn.db
 Dataset Pathname: pass3.2
 Dataset Creation: Mon Sep 03 21:29:37 2012 by Calc Open-Cased 090629

Dual Induction Calibration Report

Serial-Model:
Performed:DIL5-GEAR
Wed Aug 29 20:23:16 2012

Loop:	Readings			References			Results	
	Air	Loop		Air	Loop		m	b
Deep	0.004	0.654	V	0.000	400.000	mmho/m	490.000	-15.000
Medium	-0.005	0.737	V	0.000	462.500	mmho/m	530.000	-10.000
Internal:	Zero	Cal		Zero	Cal		m	b
Deep	0.006	0.655	V	0.000	400.000	mmho/m	615.668	-3.483
Medium	0.010	0.747	V	0.000	462.500	mmho/m	627.607	-6.064

Compensated Density Calibration Report

Serial-Model:
Source / Verifier:
Master Calibration Performed:GEAR2-GEARHART
147 / 147
Wed Aug 29 19:55:57 2012

Master Calibration

	Density		Far Detector	Near Detector	
Magnesium	1.710	g/cc	1451.87	701.81	cps
Aluminum	2.590	g/cc	324.88	493.46	cps
Spine Angle = 76.76			Density/Spine Ratio = 0.572		
	Size		Reading		
Small Ring	8.00	in	5.48	V	
Large Ring	14.00	in	7.58	V	

Compensated Neutron Calibration Report

Serial Number:
Tool Model:NUE_2I
G

CALIBRATION

Detector	Readings		Target		Normalization
Short Space	1.00	cps	1.00	cps	1.0000
Long Space	1.00	cps	1.00	cps	1.0000

Gamma Ray Calibration Report

Serial Number: GR5
Tool Model: OPEN
Performed: Wed Aug 08 15:07:38 2012Calibrator Value: 1.0 GAPI
Background Reading: 0.0 cps
Calibrator Reading: 1.0 cps
Sensitivity: 0.7500 GAPI/cps