



**SUPERIOR**  
Hays,  
Kansas

**MICRO  
LOG**

Company REILLY OIL COMPANY, INC.  
Well LINDA # 1-7  
Field WILDCAT  
County TREGO State KANSAS

Company REILLY OIL COMPANY, INC.  
Well LINDA # 1-7  
Field WILDCAT  
County TREGO  
State KANSAS

Location: API #: 15-195-22808-00-00  
933' FSL & 1205' FEL  
SEC 16 TWP 11S RGE 24W  
Permanent Datum GROUND LEVEL Elevation 2370  
Log Measured From KELLY BUSHING 5' A.G.L.  
Drilling Measured From KELLY BUSHING

Other Services  
CDL/CNL  
DIL  
Elevation  
K.B. 2375  
D.F. 2373  
G.L. 2370

Date	9/3/12
Run Number	TWO
Depth Driller	4220
Depth Logger	4219
Bottom Logged Interval	4217
Top Log Interval	3300
Casing Driller	218
Casing Logger	216
Bit Size	7.875
Type Fluid in Hole	CHEMICAL MUD
Density / Viscosity	9.3 / 63
pH / Fluid Loss	10.5 / 7.8
Source of Sample	FLOWLINE
Rim @ Meas. Temp	0.90 @ 96F
Rmf @ Meas. Temp	0.68 @ 86F
Rmc @ Meas. Temp	1.08 @ 86F
Source of Rmf / Rmc	MEASURED
Rim @ BHT	0.90 @ 118F
Time Circulation Stopped	2 HOURS
Time Logger on Bottom	
Maximum Recorded Temperature	118F
Equipment Number	860
Location	HAYS, KS.
Recorded By	IAN MABB
Witnessed By	DUSTY RHOADES
	JEFF GRONIEWEG

<<< Fold Here >>>

All interpretations are opinions based on inferences from electrical or other measurements and we cannot and do not guarantee the accuracy or correctness of any interpretation, and we shall not, except in the case of gross or willful negligence on our part, be liable or responsible for any loss, costs, damages, or expenses incurred or sustained by anyone resulting from any interpretation made by any of our officers, agents or employees. These interpretations are also subject to our general terms and conditions set out in our current Price Schedule.

Comments

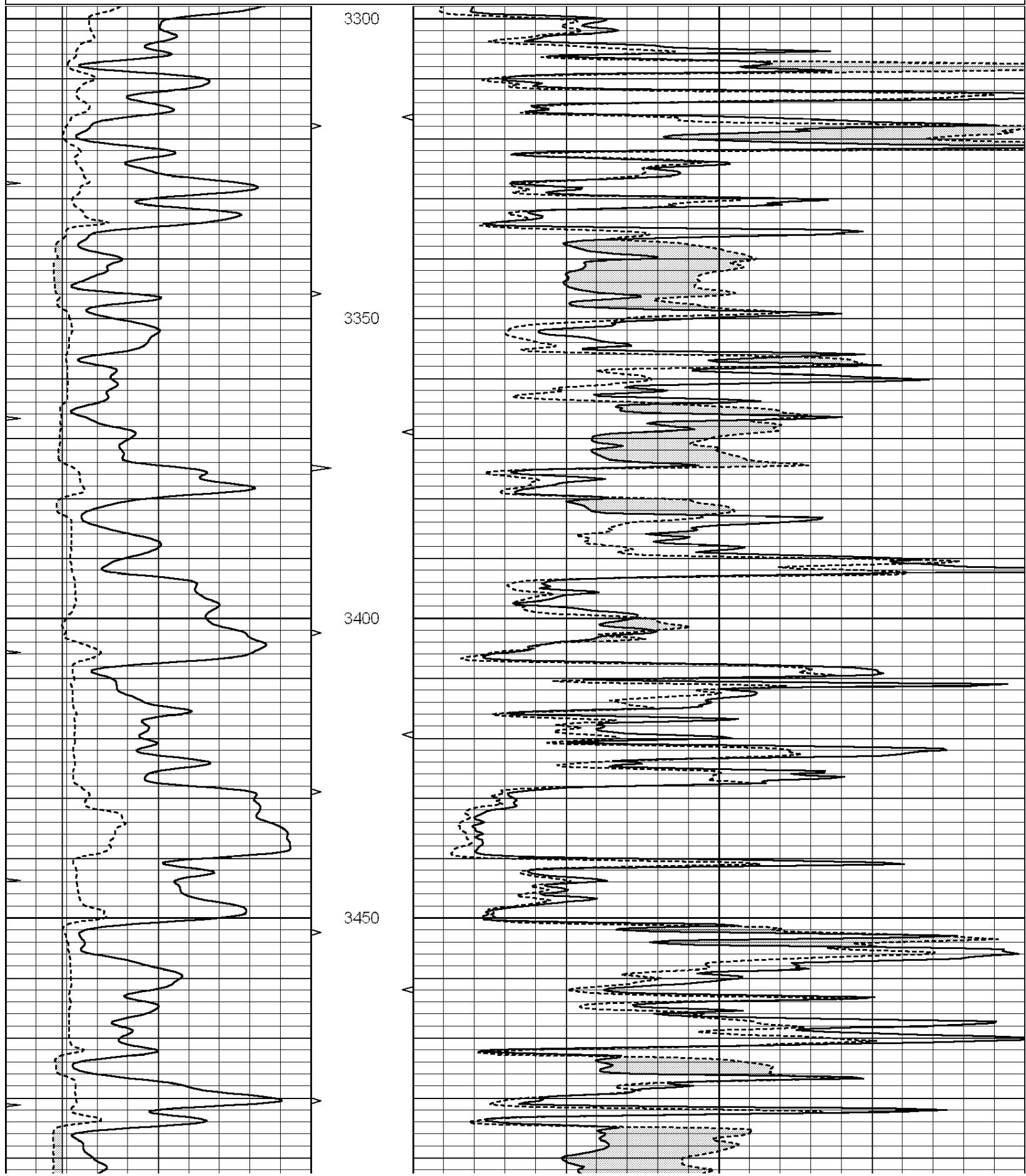
THANK YOU FOR USING SUPERIOR WELL SERVICES  
785-628-6395  
I-70 & VODA, 2.5 N, 1W, 3 N TO RD C, 3/4 E, N INTO

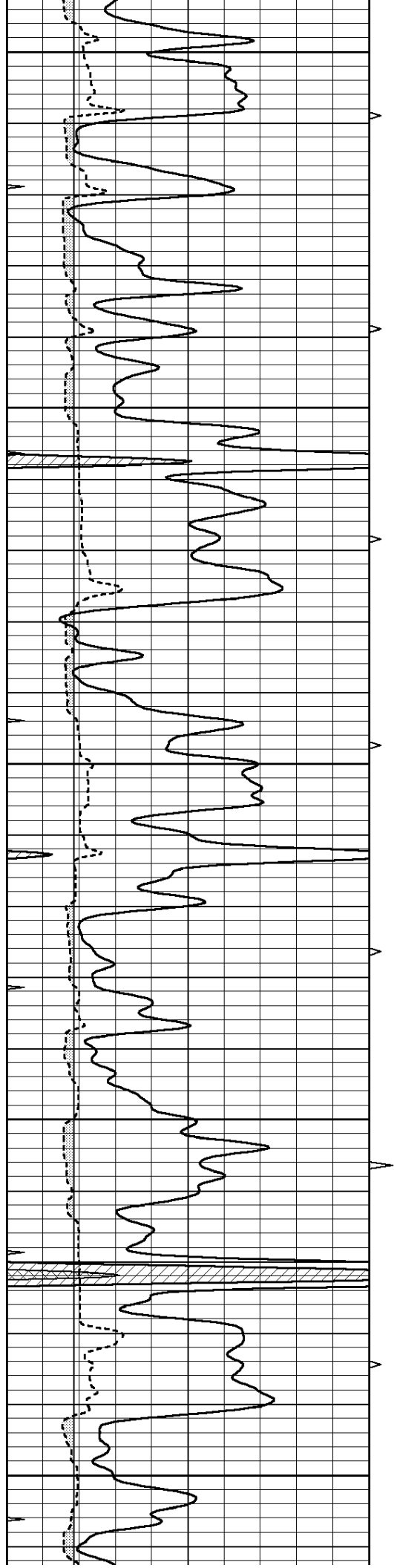
Charted by:

Depth in Feet scaled 1:240

0	GAMMA RAY (GAPI)	150
6	MELCAL (in)	16
0	MINMK	20

0	MEL1.5 (Ohm-m)	40
0	MEL2.0 (Ohm-m)	40





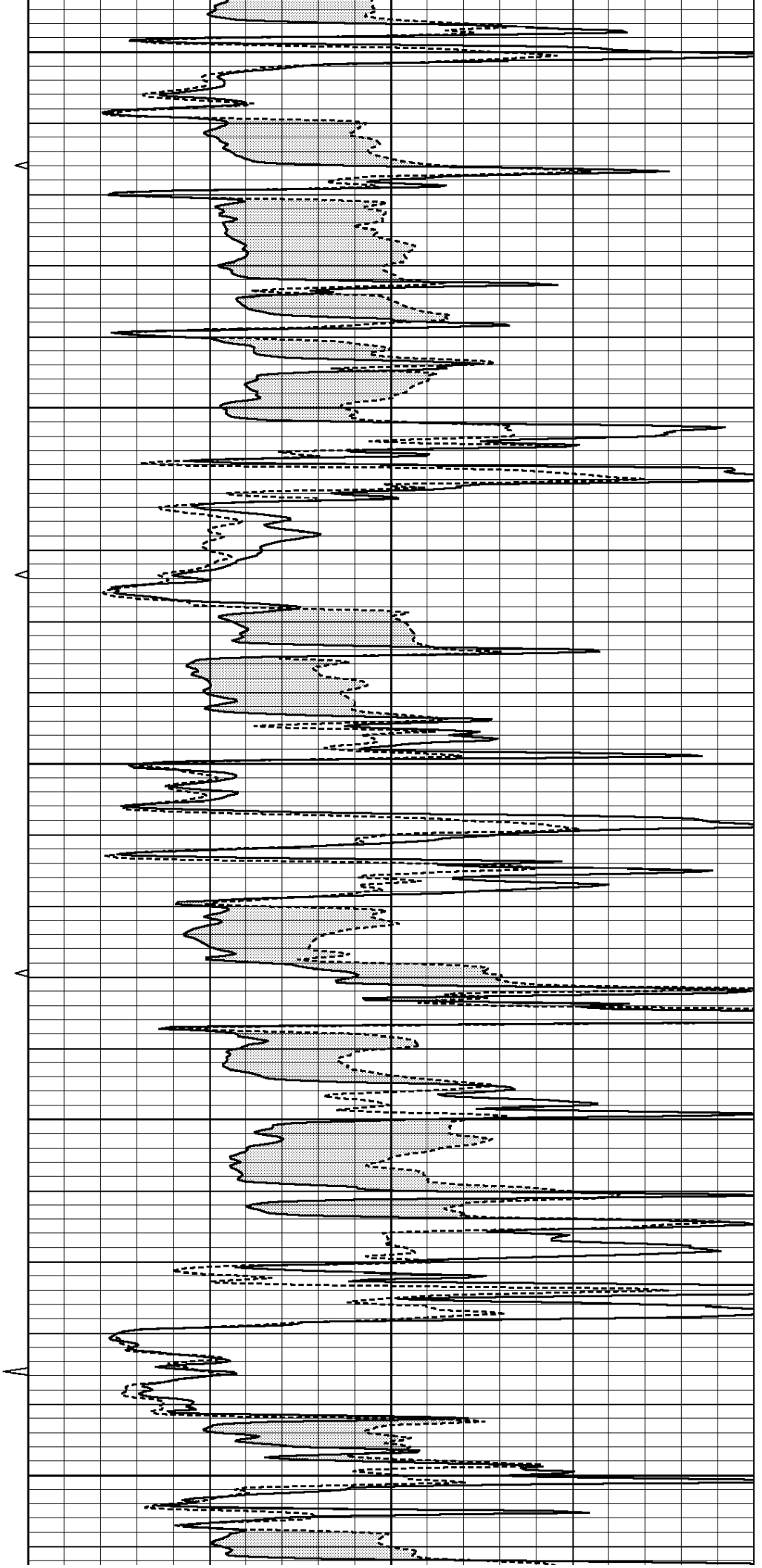
3500

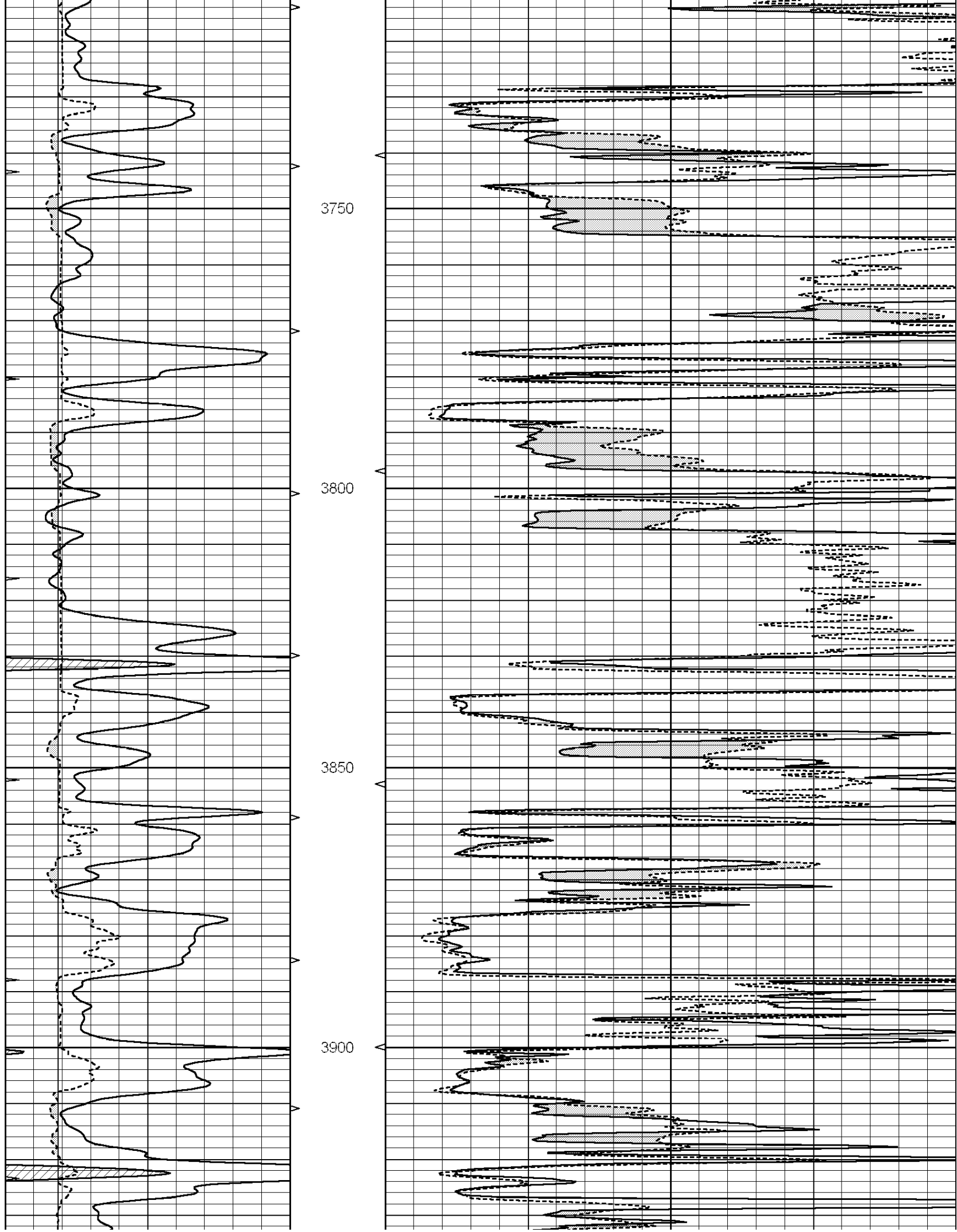
3550

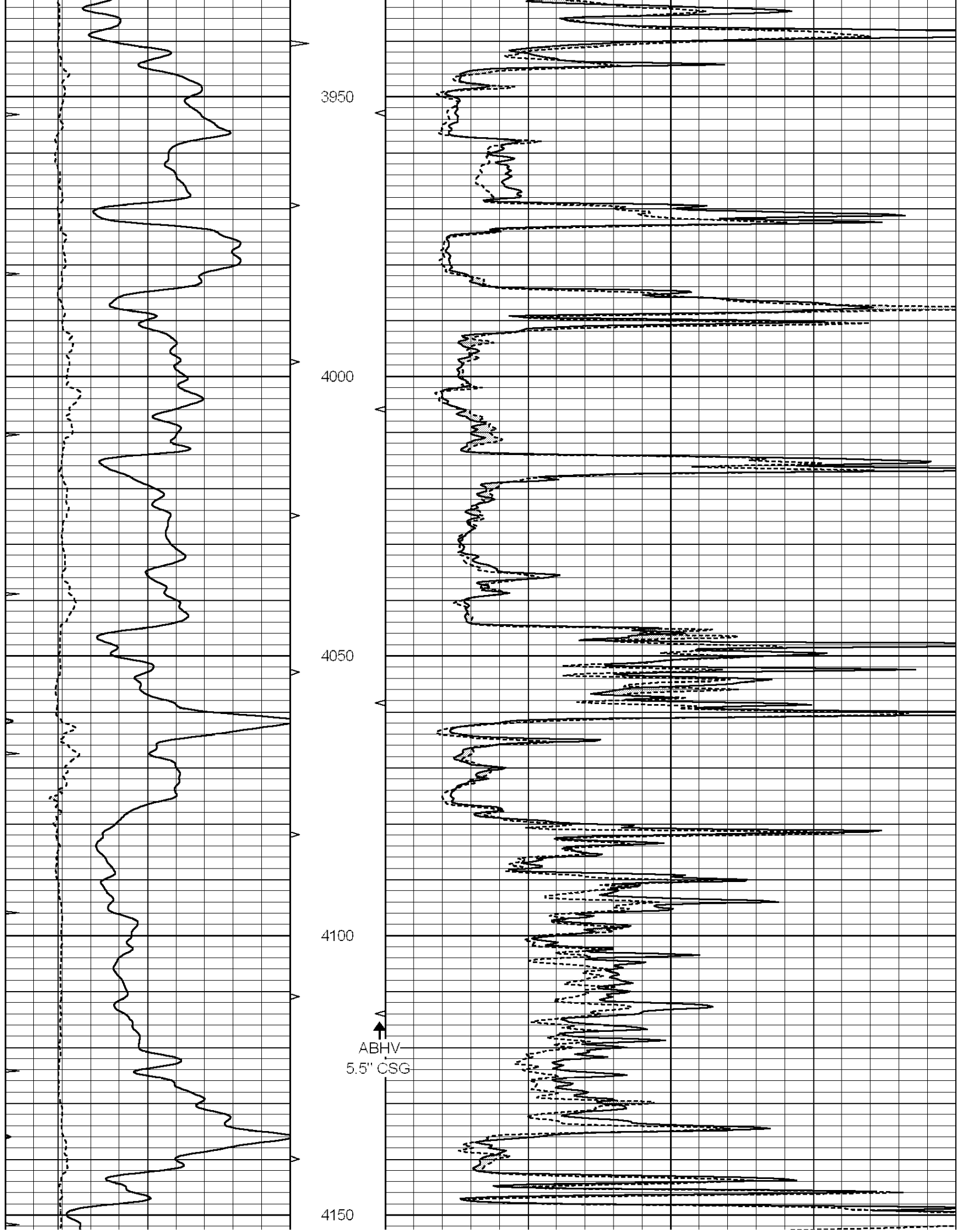
3600

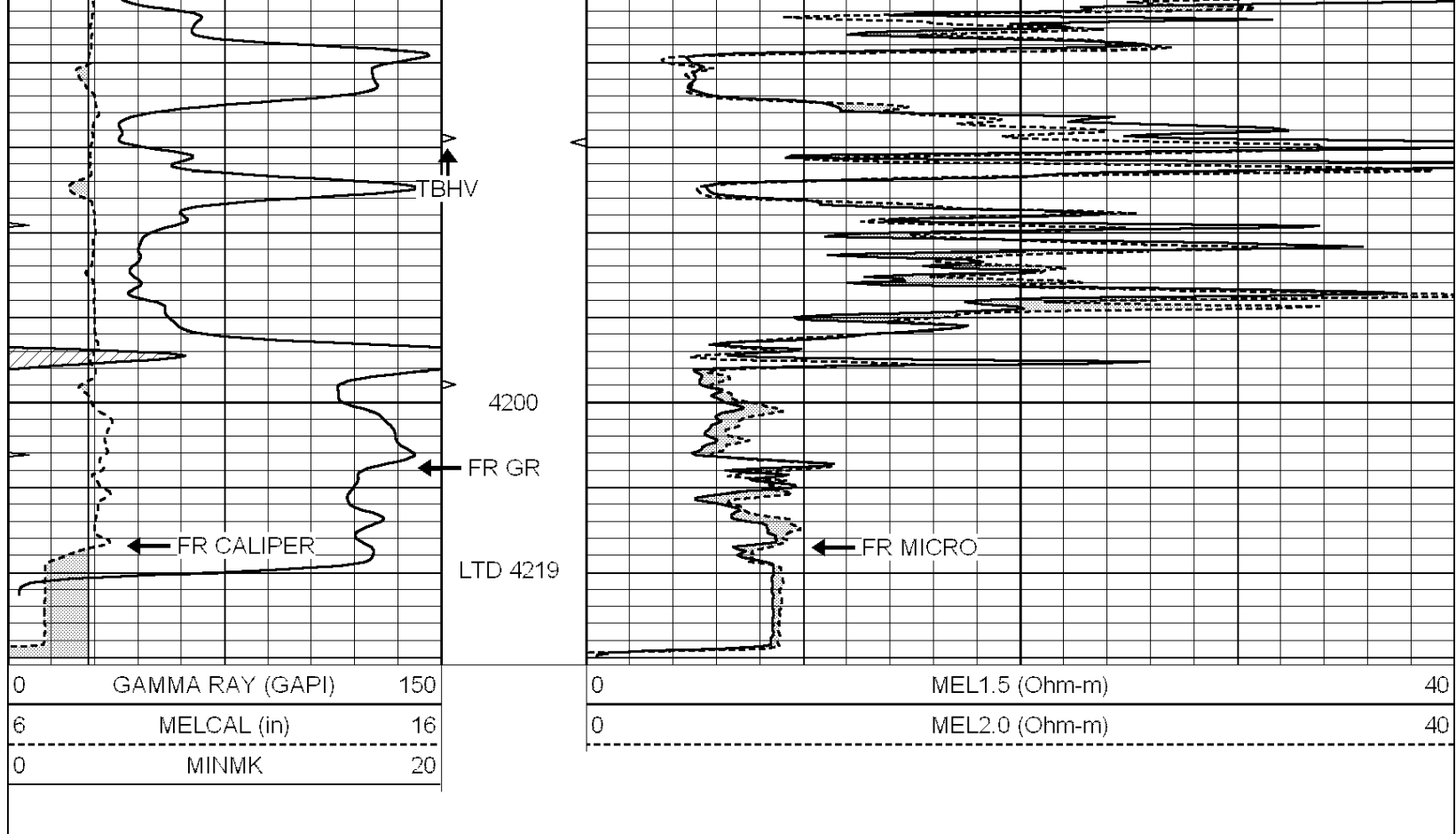
3650

3700







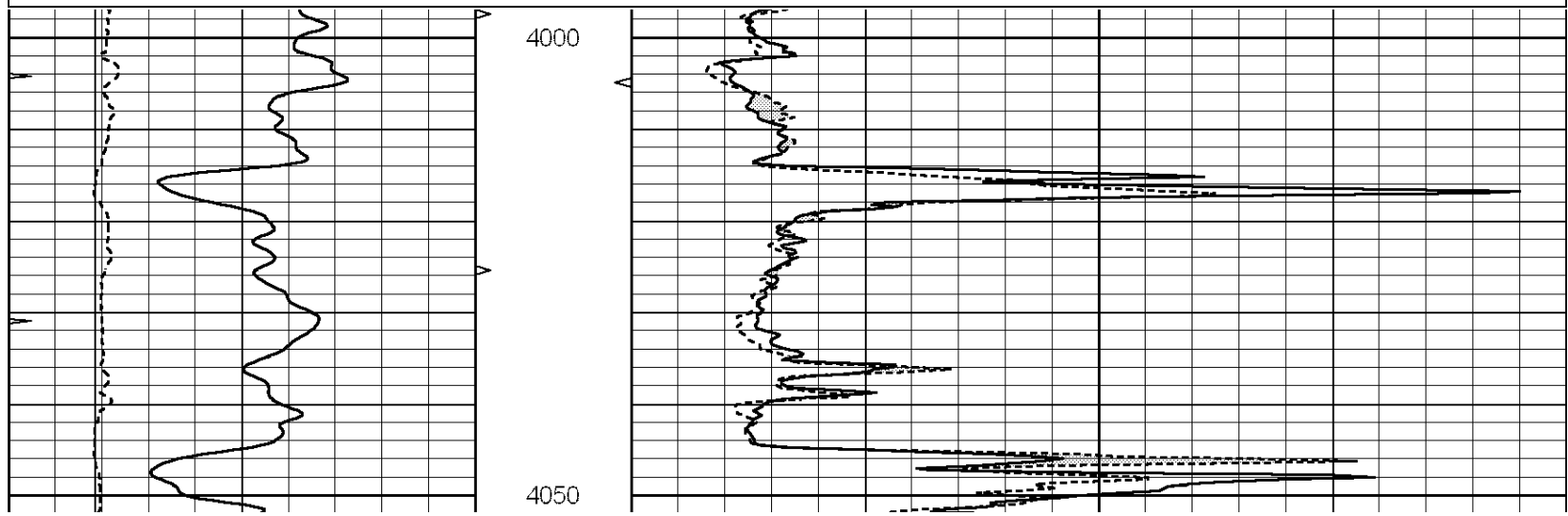


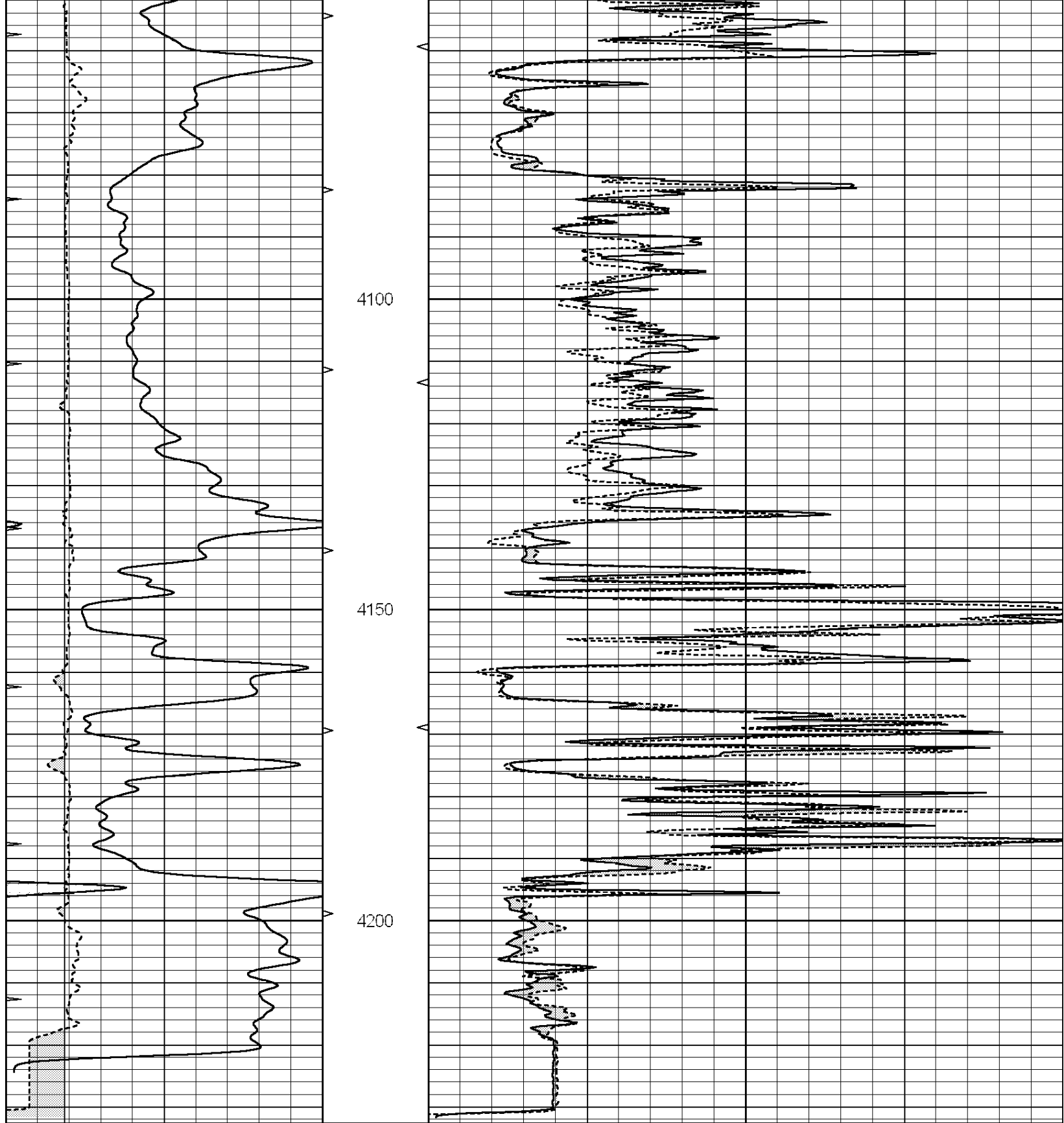
SUPERIOR  
Hays,  
Kansas

# REPEAT SECTION

Database File: 009659ddn.db  
 Dataset Pathname: pass4.4  
 Presentation Format: micro  
 Dataset Creation: Mon Sep 03 23:34:39 2012 by Calc Open-Cased 090629  
 Charted by: Depth in Feet scaled 1:240

0	GAMMA RAY (GAPI)	150	0	MEL1.5 (Ohm-m)	40
6	MELCAL (in)	16	0	MEL2.0 (Ohm-m)	40
0	MINMK	20			





0	GAMMA RAY (GAPI)	150
6	MELCAL (in)	16
0	MINMK	20

0	MEL1.5 (Ohm-m)	40
0	MEL2.0 (Ohm-m)	40

### Calibration Report

Database File: 009659ddn.db  
 Dataset Pathname: pass5.1  
 Dataset Creation: Mon Sep 03 23:29:35 2012 by Calc Open-Cased 090629

MICRO Calibration Report

Serial Number: Micro1  
 Tool Model: ProbeL  
 Performed: Wed Aug 29 22:09:57 2012

Caliper Calibration:	Gain=3.239	Offset=-2.669
	Low Cal	High Cal
References	7.700	14.000
Readings	3.201	5.147

1.5" Calibration:	Gain=80.000	Offset=0.500
	Low Cal	High Cal
References	0.000	20.000
Readings	0.019	0.681

2" Calibration:	Gain=130.000	Offset=-5.000
	Low Cal	High Cal
References	0.000	20.000
Readings	0.008	0.791

Gamma Ray Calibration Report

Serial Number: GR5  
 Tool Model: OPEN  
 Performed: Wed Aug 08 15:07:38 2012

Calibrator Value:	1.0	GAPI
Background Reading:	0.0	cps
Calibrator Reading:	1.0	cps
Sensitivity:	0.7500	GAPI/cps