



Pioneer Energy Services

Microresistivity Log

15-147-20,689-00-00

API No.

Company **Bach Oil Production**

Well **Knape No. 3**

Field **Wildcat**

County **Phillips** State

Kansas

Location

2310' FSL & 1775' FWL

Other Services
CNL/CDL
DIL

Sec: **13** Twp: **1 S** Rge: **19 W**

Permanent Datum **Ground Level** Elevation **2138**

Log Measured From **Kelly Bushing** 5 Ft. Above Perm. Datum

Elevation
K.B. 2143
D.F.
G.L. 2138

Date **9/23/2012**

Run Number **Two**

Depth Driller **3630**

Depth Logger **3632**

Bottom Logged Interval **3631**

Top Log Interval **3000**

Casing Driller **8.625 @ 226**

Casing Logger **223**

Bit Size **7.875**

Type Fluid in Hole **Chemical**

Salinity,ppm CL **1000**

Density / Viscosity **9.0 59**

pH / Fluid Loss **10.5 5.6**

Source of Sample **Flowline**

Rm @ Meas. Temp **2.10 @ 58**

Rmf @ Meas. Temp **1.58 @ 58**

Rmc @ Meas. Temp **2.84 @ 58**

Source of Rmf / Rmc **Charts**

Rm @ BHT **1.08 @ 112**

Operating Rig Time **4 Hours**

Max Rec. Temp. F **112**

Equipment Number **17**

Location **Hays**

Recorded By **D. Martin**

Witnessed By **Bob Peterson**

<<< Fold Here >>>

All interpretations are opinions based on inferences from electrical or other measurements and we cannot and do not guarantee the accuracy or correctness of any interpretation, and we shall not, except in the case of gross or willful negligence on our part, be liable or responsible for any loss, costs, damages, or expenses incurred or sustained by anyone resulting from any interpretation made by any of our officers, agents or employees. These interpretations are also subject to our general terms and conditions set out in our current Price Schedule.

Comments

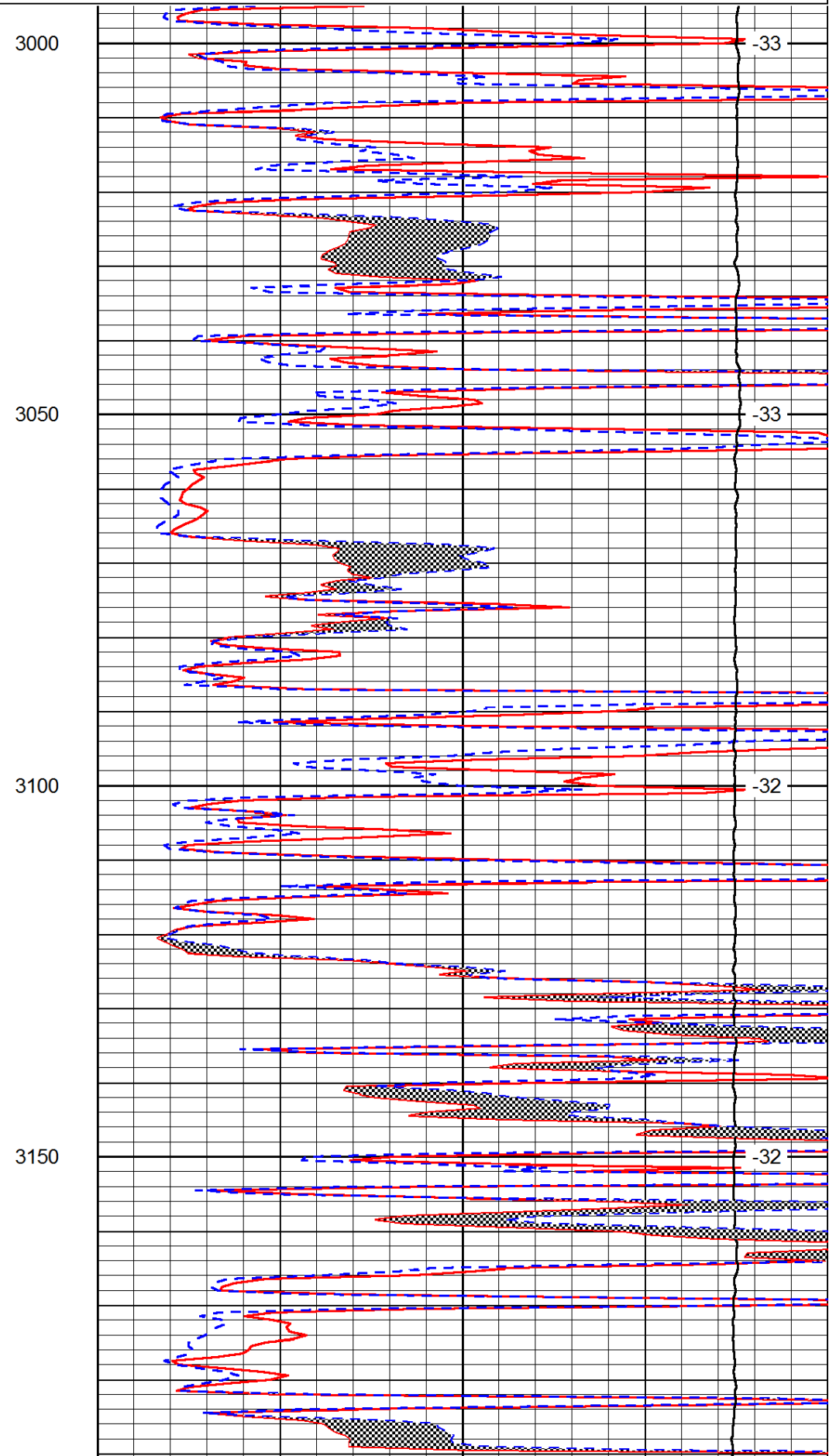
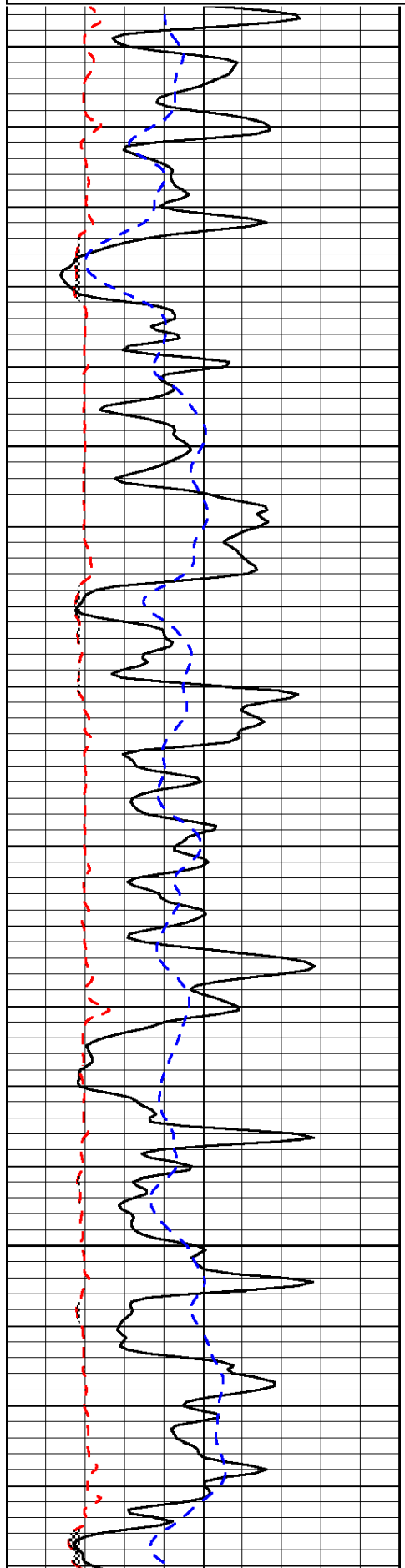
Thank you for using Pioneer Energy Services
www.pioneerenergy.com
 785 625 3858
 Phillipsburg, KS
 N to 183/383 Junction,
 3 W to 500 Rd., 2 S, E Into

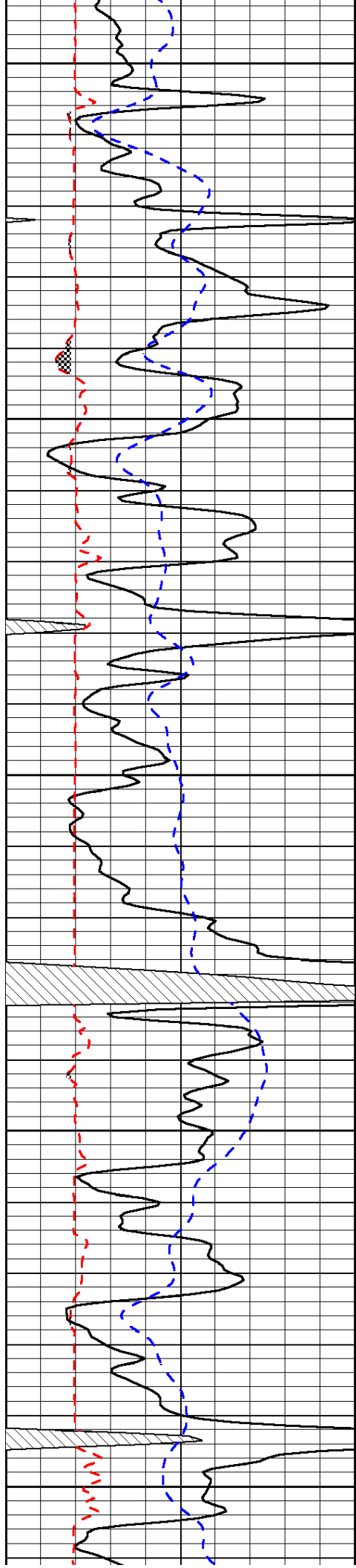
Database File: c:\warrior\data\bach_knape no. 3\bachd.db
 Dataset Pathname: DIL/bacstk
 Presentation Format: micro
 Dataset Creation: Sun Sep 23 08:37:07 2012
 Charted by: Depth in Feet scaled 1:240

0	Gamma Ray	150
6	Micro Log Caliper (GAPI)	16
-200	SP (mV)	0

0	Micro Inverse 1 X 1	40
0	Micro Normal 2"	40
15000	Line Weight	0

LSPD





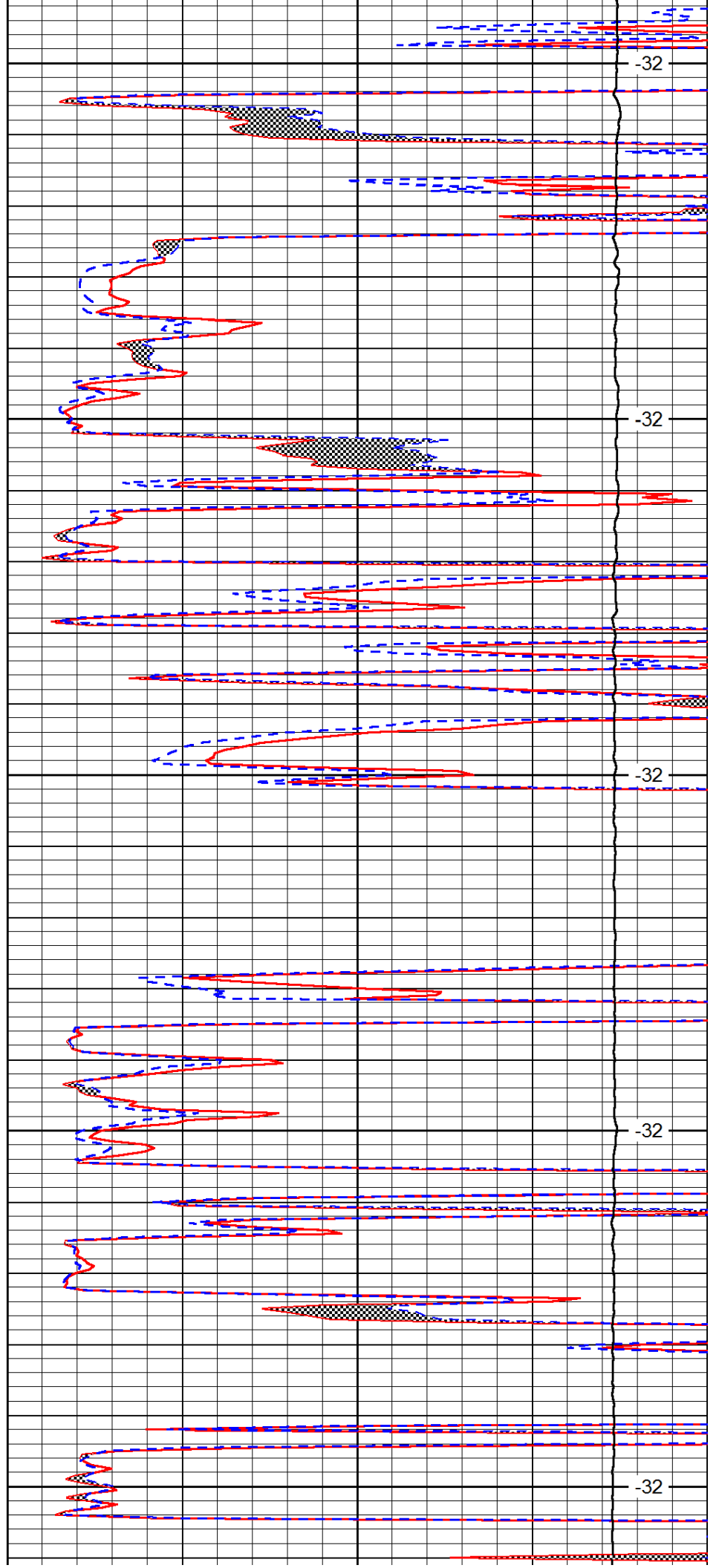
3200

3250

3300

3350

3400



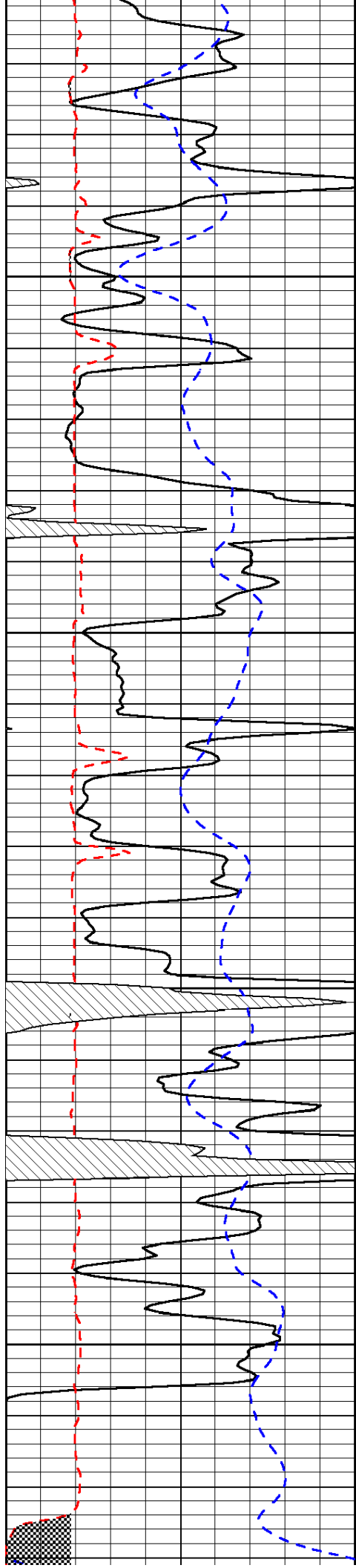
-32

-32

-32

-32

-32

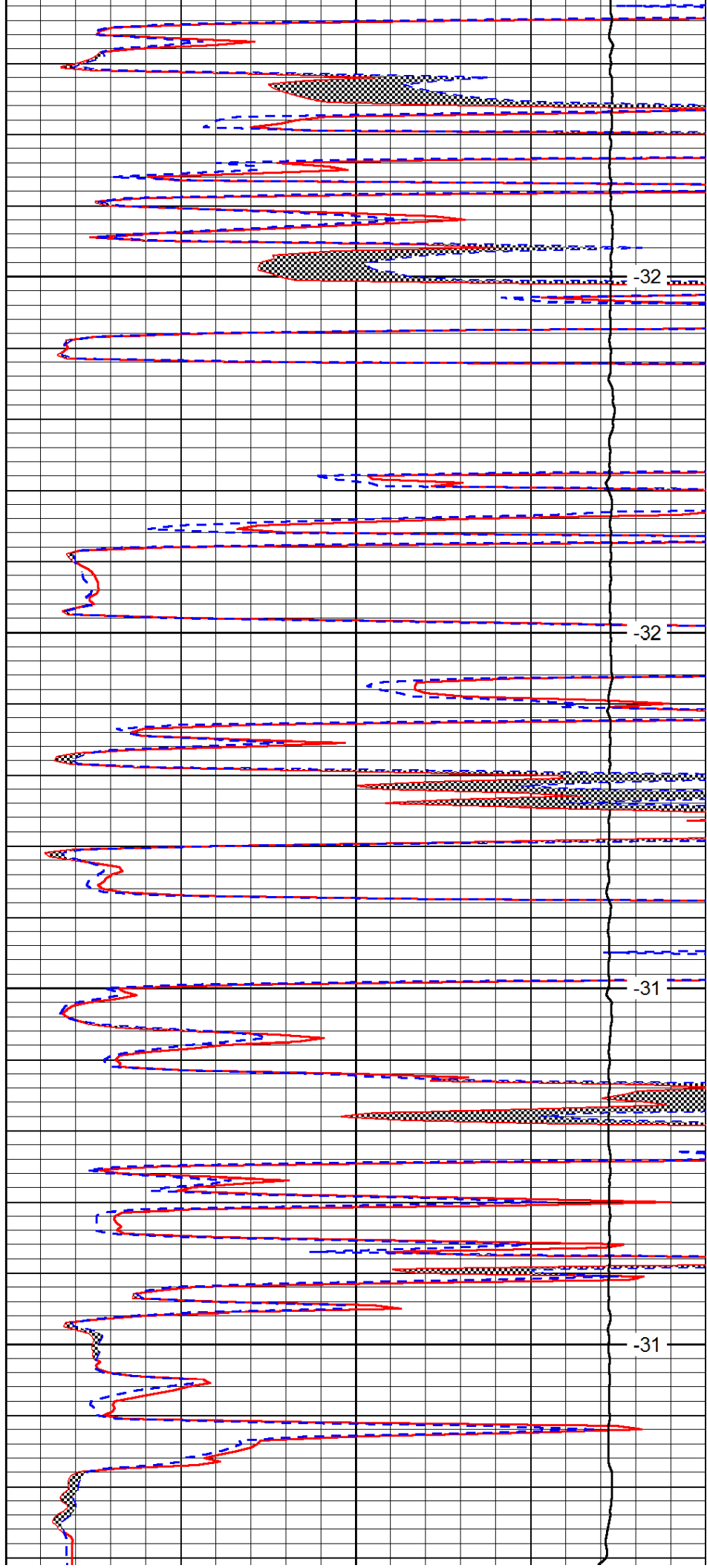


3450

3500

3550

3600

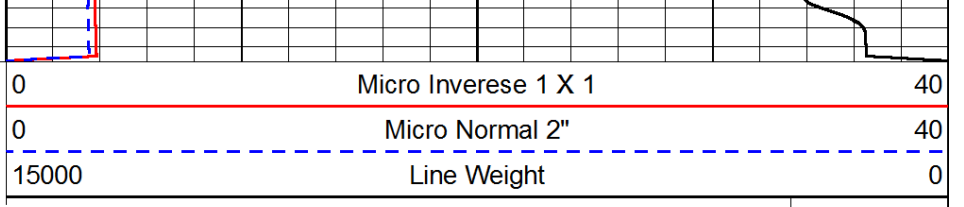
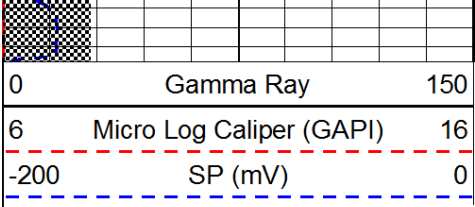


-32

-32

-31

-31



LSPD