



Pioneer Energy Services

## Dual Compensated Porosity Log

15-147-20,689-00-00

**Company** Bach Oil Production  
**Well** Knape No. 3  
**Field** Wildcat  
**County** Phillips  
**State** Kansas

**Location** 2310' FSL & 1775' FWL  
**Sec:** 13 **Twp:** 1 S **Rge:** 19 W

**Permanent Datum** Ground Level **Elevation** 2138  
**Log Measured From** Kelly Bushing **5 Ft. Above Perm. Datum**  
**Drilling Measured From** Kelly Bushing

Other Services  
 DIL  
 MEL

**Elevation**  
 K.B. 2143  
 D.F.  
 G.L. 2138

Date	9/23/2012
Run Number	One
Type Log	CNL / CDL
Depth Driller	3630
Depth Logger	3632
Bottom Logged Interval	3611
Top Logged Interval	3000
Type Fluid In Hole	Chemical
Salinity, PPM CL	1000
Density	9.0
Level	Full
Max. Rec. Temp. F	112
Operating Rig Time	4 Hours
Equipment -- Location	17 Hays
Recorded By	D. Martin
Witnessed By	Bob Peterson

Borehole Record		Casing Record					
Run No.	Bit	From	To	Size	Wgt.	From	To
1	12.25	00	226	8.625	24#	00	226
2	7.875	226	3630				

<<< Fold Here >>>

All interpretations are opinions based on inferences from electrical or other measurements and we cannot and do not guarantee the accuracy or correctness of any interpretation, and we shall not, except in the case of gross or willful negligence on our part, be liable or responsible for any loss, costs, damages, or expenses incurred or sustained by anyone resulting from any interpretation made by any of our officers, agents or employees. These interpretations are also subject to our general terms and conditions set out in our current Price Schedule.

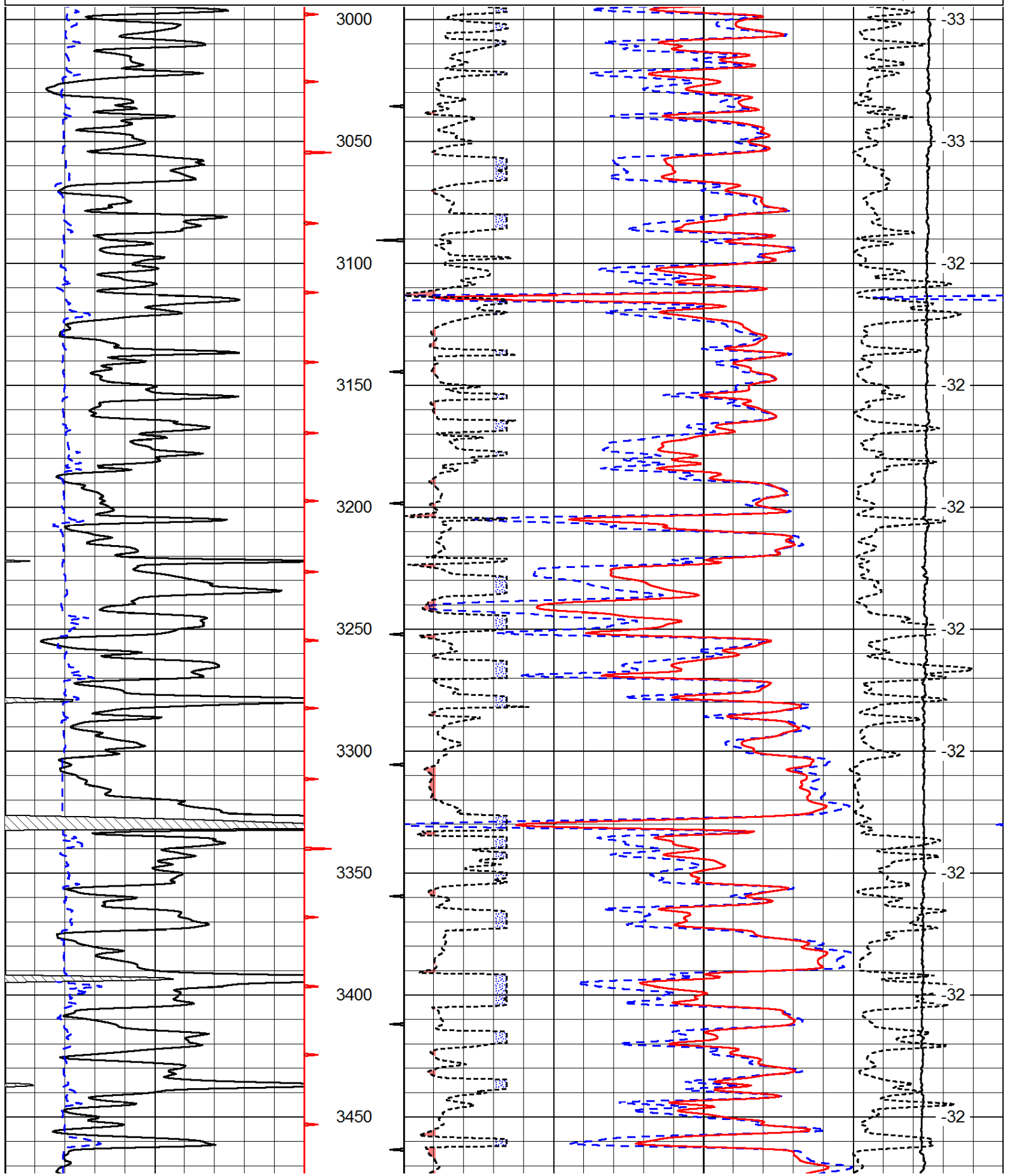
### Comments

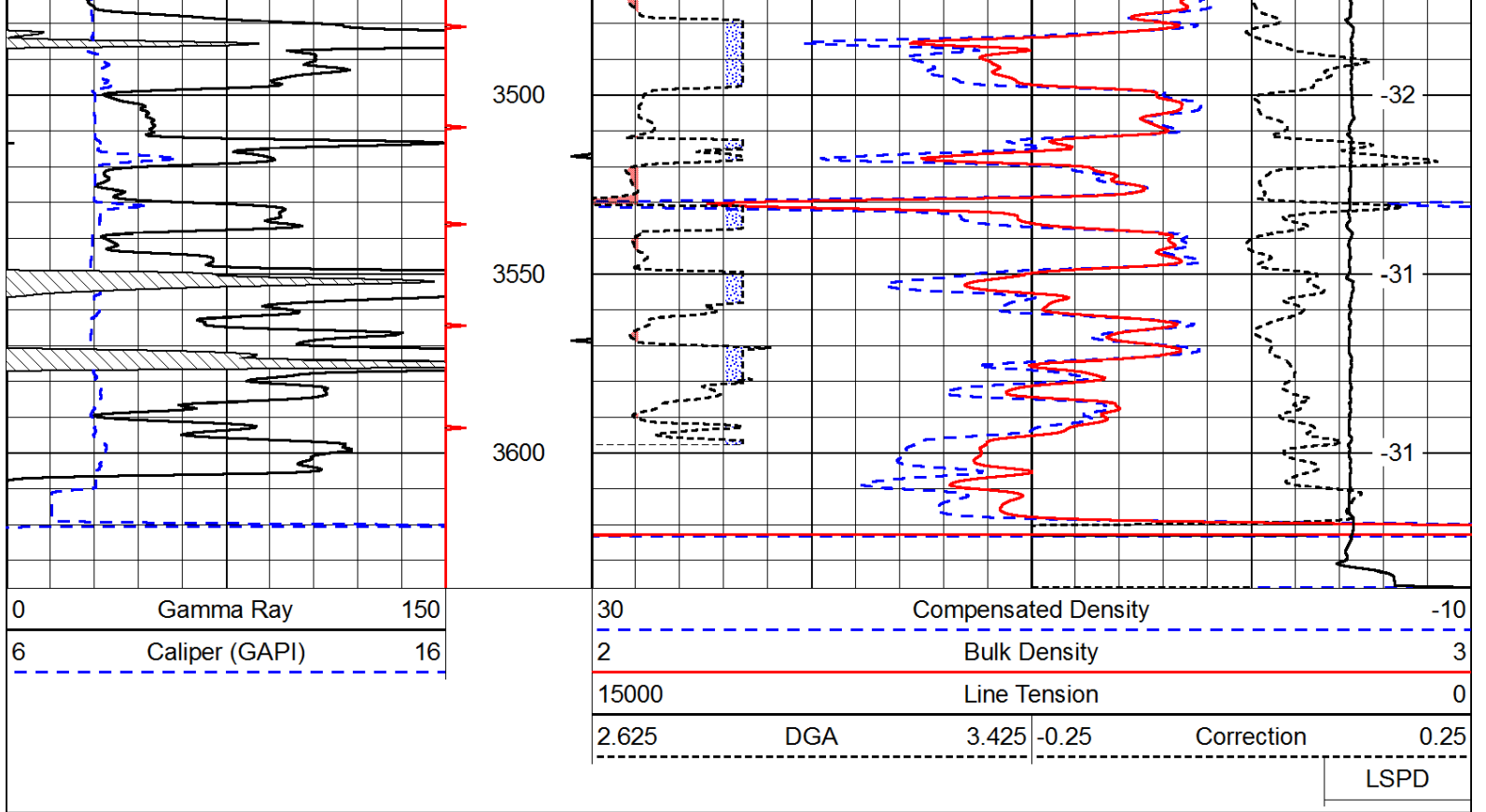
Thank you for using Pioneer Energy Services  
[www.pioneerenergy.com](http://www.pioneerenergy.com)  
 785 625 3858  
 Phillipsburg, KS  
 N to 183/383 Junction,  
 3 W to 500 Rd., 2 S, E Into

Database File: c:\warrior\data\bach\_knape no. 3\bachd.db  
 Dataset Pathname: DIL/bacstk  
 Presentation Format: cdl  
 Dataset Creation: Sun Sep 23 08:37:07 2012  
 Charted by: Depth in Feet scaled 1:600

0	Gamma Ray	150
6	Caliper (GAPI)	16

30	Compensated Density			-10	
2	Bulk Density			3	
15000	Line Tension			0	
2.625	DGA	3.425	-0.25	Correction	0.25
LSPD					





Database File: c:\warrior\data\bach\_knape no. 3\bachd.db  
 Dataset Pathname: DIL/bacstk  
 Presentation Format: cndlspec  
 Dataset Creation: Sun Sep 23 08:37:07 2012  
 Charted by: Depth in Feet scaled 1:240

